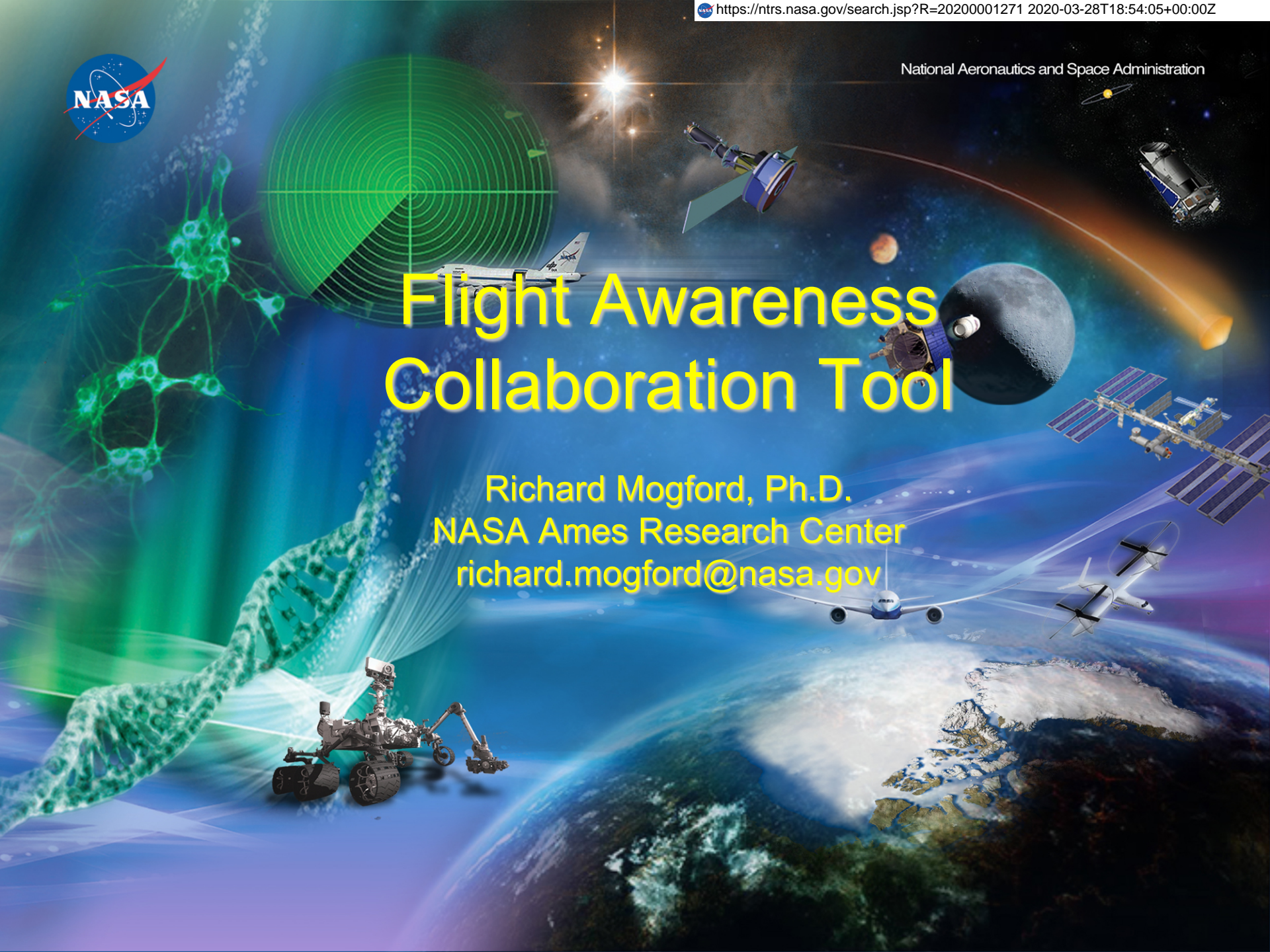




Flight Awareness Collaboration Tool

Richard Mogford, Ph.D.
NASA Ames Research Center
richard.mogford@nasa.gov

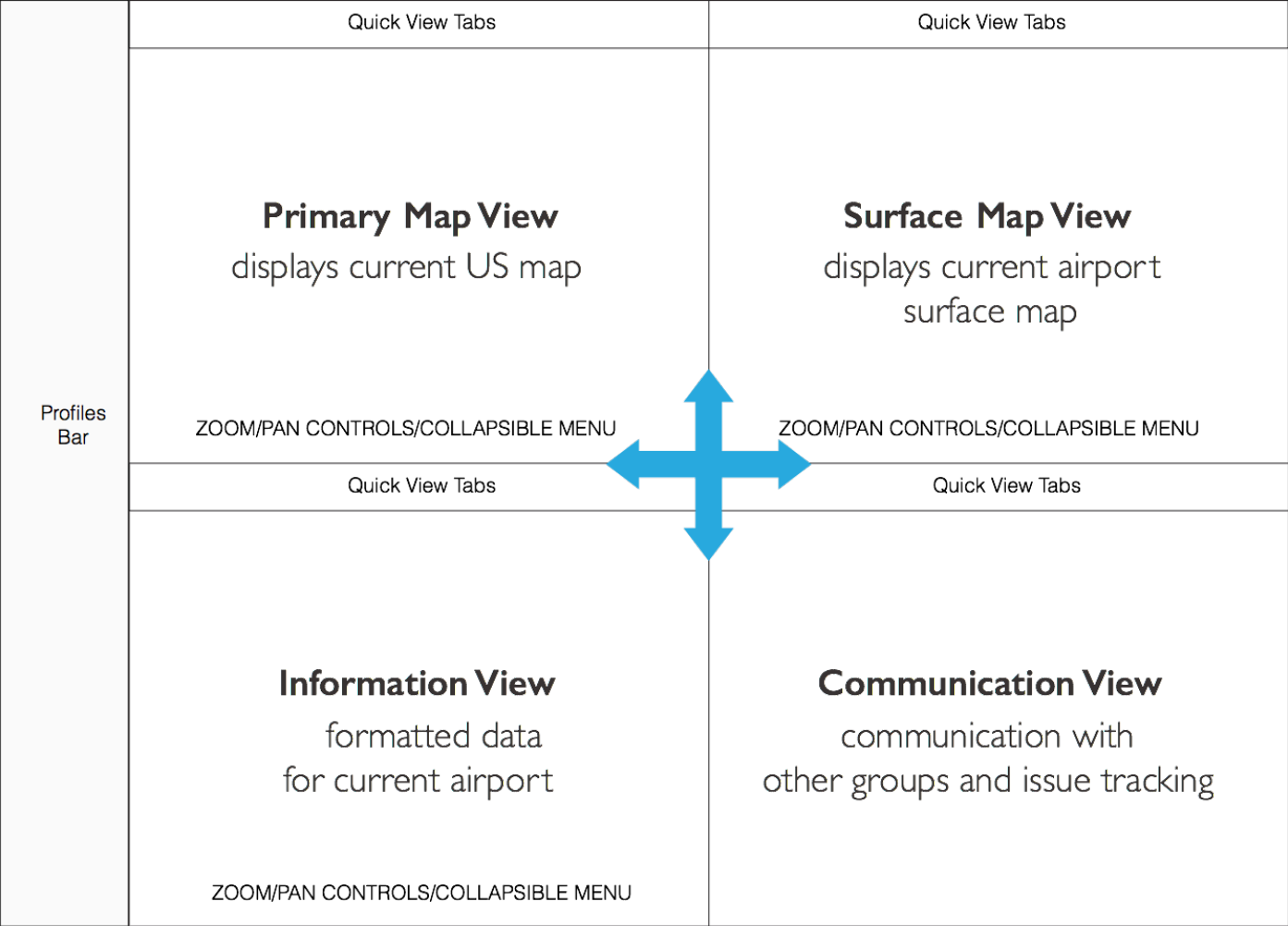


Flight Awareness Collaboration Tool



- Created the “Flight Awareness Collaboration Tool” (FACT)
- Concentrates information about winter weather events on one display
- Supports collaboration between airline operations center, air traffic control, airport authority, and de-icing operators
- Web-based application
- Includes:
 - Weather status and forecasts
 - FAA data from the System Wide Information Management system
 - Reporting of runway closures for snow/ice treatment
 - Airport runway configuration (capacity)
 - De-icing operations
 - FAA actions (e.g., ground stops, miles-in-trail, etc.)

FACT Information Architecture



FACT User Interface



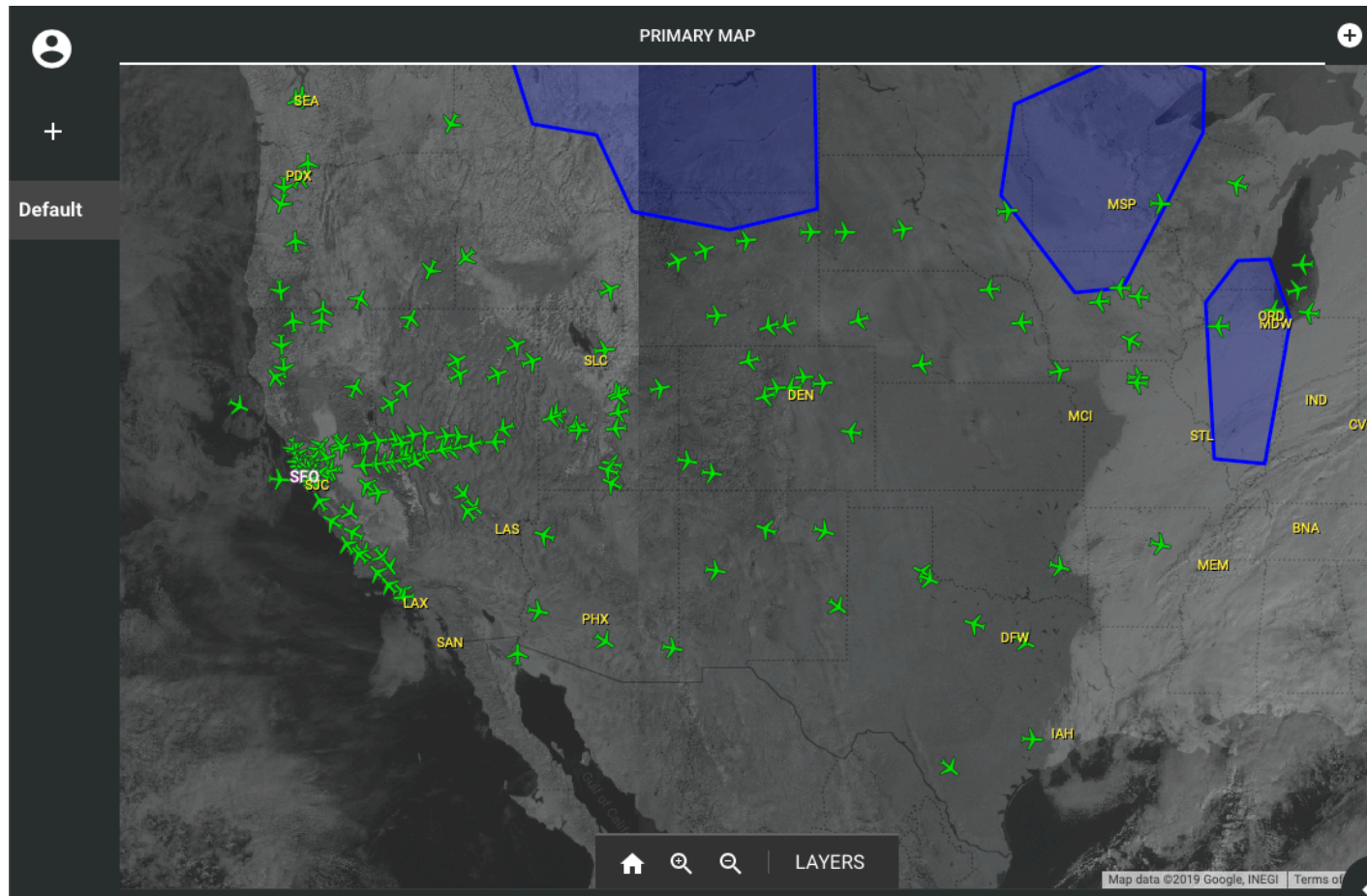
The screenshot displays the FACT User Interface with four main sections highlighted by yellow arrows and labels:

- Map:** A primary map of the United States showing various airports and flight paths.
- Airport:** A detailed view of an airport terminal and runways.
- Data:** A table listing advisories for Wednesday, 06-26-2019.
- Messaging:** A list of messages and advisories, including "SFO: Sample flag", "ewf ops", "PIT: too much ice", and "LAX: taxiway blocked".

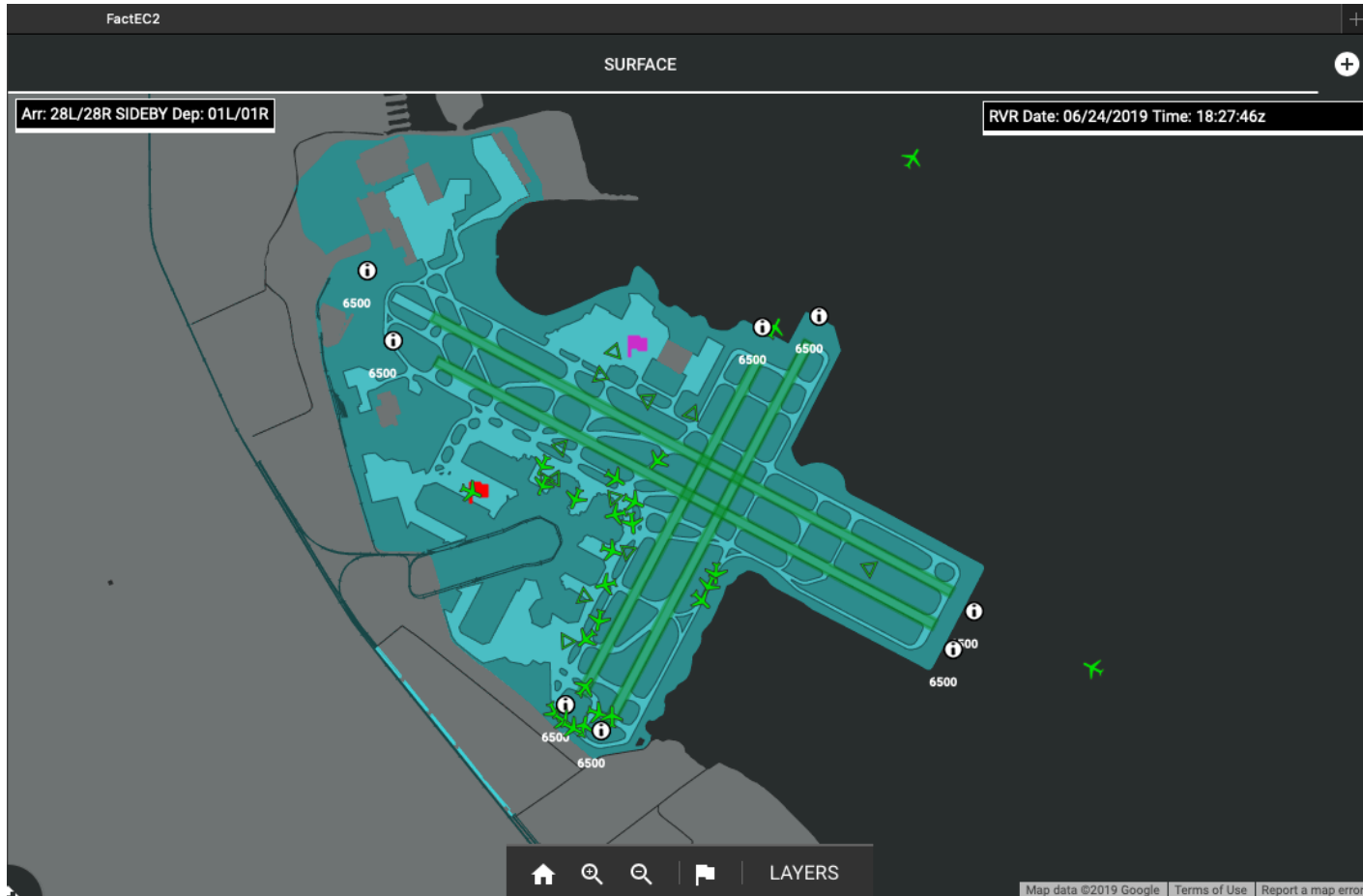
| # | CTRL ELEMENT | BRIEF TITLE |
|-----|--------------|-------------|
| 066 | SFO/ZOA | CDM |
| 064 | DCC | OPERATIONS |
| 050 | DCC | OPERATIONS |
| 045 | SFO/ZOA | CDM |
| 044 | SFO/ZOA | CDM |
| 043 | SFO/ZOA | CDM |
| 041 | DCC | OPERATIONS |
| 036 | DCC | OPERATIONS |
| 031 | DCC | OPERATIONS |
| 028 | DCC | NOCC |
| 022 | DCC | PLUTE |

Additional text at the bottom left: "advisory received. ATCSCC ADVZY 071 JFK/ZNY 06/26/2019 GROUND STOP 1ks"

FACT Primary Map View



FACT Surface Map View



FACT Information View (Webscraped)



PLANNING CHARTS

Search

4 ADVISORIES FOR MONDAY, 06-24-2019

| # | CTRL ELEMENT | BRIEF TITLE |
|-----|--------------|-------------|
| 074 | SFO/ZOA | CDM |
| 071 | DCC | OPERATIONS |
| 068 | SFO/ZOA | CDM |
| 010 | DCC | NOCC |

EVENT TIME 24/0115 24/1115
NOCC 06/24/19 SCHEDULED FACILITY OUTAGES

PICO DEL ESTE, PR QJQ ATCRB 12002000Z

DALFT WORTH, TX DFW RWY 18R/36L VYN/BXN LOC/GS 04001100Z

DALFT WORTH, TX DFW RWY 18R VYN ALS 04001100Z

SALT LAKE CITY, UT SLC RWY 16L/34R MOY/SLC LOC/GS 07001300Z

LAS VEGAS, NV LAS RWY 01L CUA LOC/GS 07001300Z

SAN FRANCISCO, CA SFO RWY 28R GWQ LOC/GS 07001300Z

- ✓ Advisories
- ✓ FAA NOTAMs
- ✓ METARs/TAFs

New advisory received. ATCSCC ADVZY 037 DCC 06/24/19 ROUTE FYI





Quicklinks

FACT Communication View



MY QUEUE FACT CHAT 2

ADD QUEUE ITEM Filter

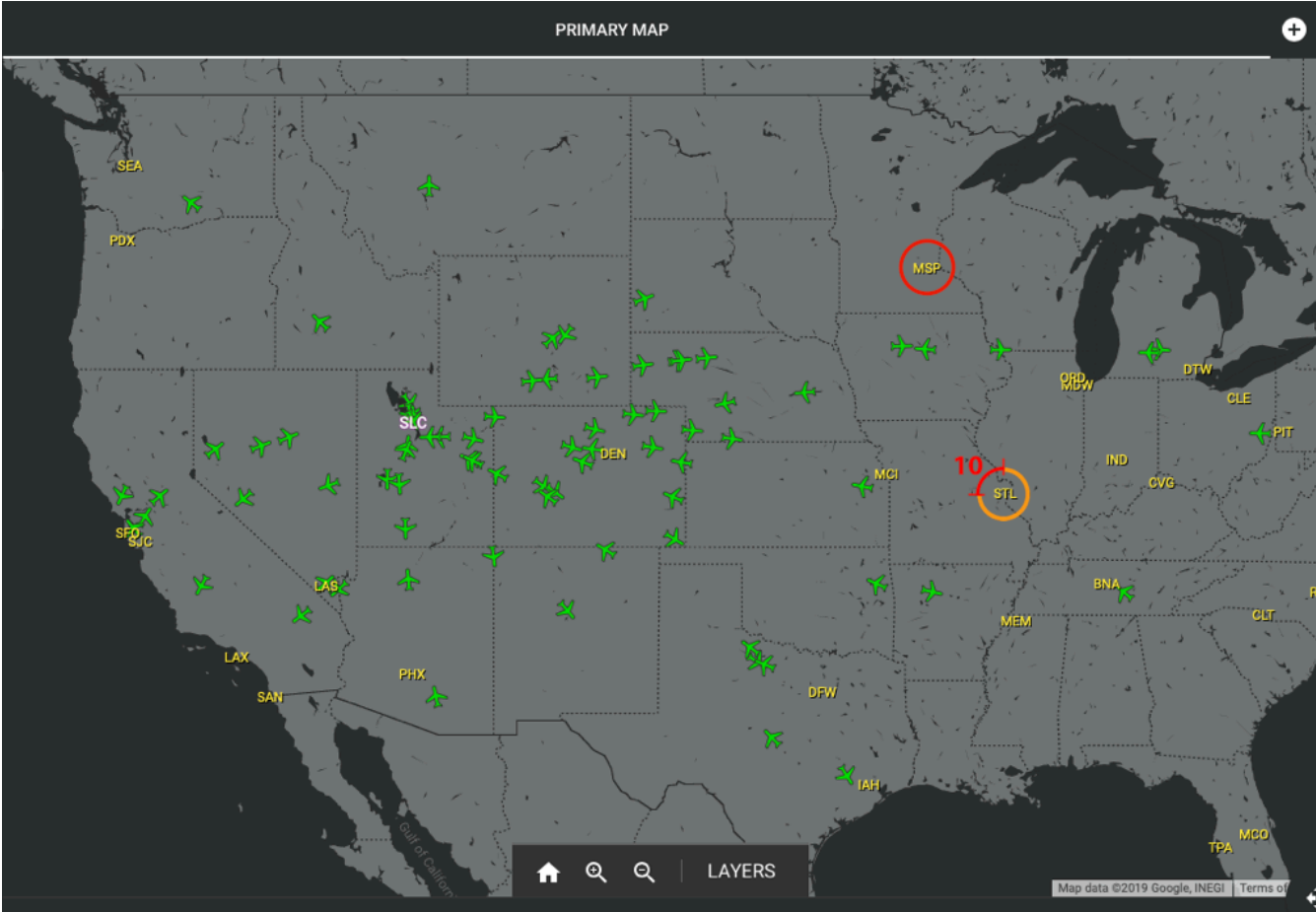
-  **SFO: Sample flag (This item is shared)** MORE ▾
AUTHOR: *swapnilg*
2018-03-10 01:57:45
SHARED WITH: **F.A.C.T**
- ewr ops (This item is shared)** MORE ▾
AUTHOR: *jvickers*
2018-03-25 13:58:17
SHARED WITH: **F.A.C.T**
-  **PIT: too much ice, closing this runway for 3 hours (This item is shared)** MORE ▾
AUTHOR: *swapnilg*
2018-05-31 21:03:05
SHARED WITH: **F.A.C.T**
-  **LAX: taxiway blocked (This item is shared)** MORE ▾
AUTHOR: *admin*
2018-09-04 20:50:37
SHARED WITH: **FACT** **F.A.C.T**
-  **DFW: Unsafe taxiway crossing (This item is shared)** MORE ▾
AUTHOR: *admin*
2018-10-19 15:30:58

FACT Automation



- As a winter storm develops, the dispatcher must monitor airport conditions in the path of the weather
- Needs to be aware of upcoming holds and evaluate the need for diversions
 - Fuel reserves must be adequate for the situation
- One measure of imminent airport problems is traffic movement at the target airport
 - Comparison of arrival and departure rates compared to normal airport configuration
 - Assessment of traffic movement on the surface
- FACT will monitor this activity and alert the dispatcher about degrading airport conditions
- Dispatcher can contact the aircraft concerned to make plans for holds or diverts
- Will use the features of FACT to learn more about the problems at the airport

Airport Alerting



Airport Alerting



PRIMARY MAP

SURFACE

PLANNING CHARTS

ADVISORIES FOR SUNDAY, 03-03-2019

ADVISORIES FOR SATURDAY, 03-02-2019

ADVISORIES FOR FRIDAY, 03-01-2019

NOTAMs FOR MSP

| # | CLASS | CONDITION |
|------------|-----------|--|
| 7/4604 | Procedure | STAR MINNEAPOLIS-ST PAUL INTL/WOLD-CHAMBERLAIN, MINNEAPOLIS, MN. BLUEM RNAV ARRIVAL... MFDLO TRANSITION ATC ASSIGNED ONLY. 1702151350-PERM |
| 09/471 | Aerodrome | RWY 04 RAI LGT OUT OF SERVICE 1809261213-1910231800EST |
| 8/9486 | Procedure | SID MINNEAPOLIS-ST PAUL INTL/WOLD-CHAMBERLAIN, Minneapolis, MN. DARWIN SEVEN DEPARTURE... DEPARTURE ROUTE DESCRIPTION: CHANGE THENCE INSTRUCTIONS TO READ ON TRANSITION OR ASSIGNED ROUTE. EXPECT CLEAR... |
| LTA-M98-11 | LTA | Re-Categorization of Wake Turbulence (RECAT) Criteria |
| 8/9443 | Procedure | IAP MINNEAPOLIS-ST PAUL INTL/WOLD-CHAMBERLAIN, Minneapolis, MN. RNAV (GPS) 2 Rwy 30L, AMDT 5A... LPV DA 1079/HAT 256 ALL CATS. LNAV/VNAV DA 1188/HAT 365 ALL CATS, VIS RVR 5300 ALL CATS. FOR INOPERAT... |
| 8/9444 | Procedure | IAP MINNEAPOLIS-ST PAUL INTL/WOLD-CHAMBERLAIN, Minneapolis, MN. ILS Rwy 30L (CAT II), AMDT 47... PROCEDURE NA, EXCEPT WHEN ATCT ADVISES THIS CRANE IS DOWN. TEMPORARY CRANES, BEGINNING 2363FT NW OF AP... |
| 8/9445 | Procedure | IAP MINNEAPOLIS-ST PAUL INTL/WOLD-CHAMBERLAIN, Minneapolis, MN. ILS OR LOC Rwy 30L, AMDT 47... S-ILS 30L DA 1067/HAT 253. FOR INOPERATIVE ALS, INCREASE VISIBILITY ALL CATS TO RVR 4000, EXCEPT |

New advisory received ATISCC ADVZY 035 DCC 03/03/2019 CARIBBEAN OUTLOOKFYI

cklinks

MY QUEUE FACT CHAT

ADD QUEUE ITEM

Filter

- SFO: Sample flag (This item is shared)
AUTHOR: ewsping
2018-03-10 01:37:45
SHARED WITH: FACT
- ewr ops (This item is shared)
AUTHOR: jbeckey
2018-03-21 12:59
SHARED WITH: FACT
- PIT: too much ice, closing this runway for 3 hours (This item is shared)
AUTHOR: ewsping
2018-05-31 21:03:05
SHARED WITH: FACT
- LAX: taxiway blocked (This item is shared)
AUTHOR: adms
2018-09-04 20:50:37
SHARED WITH: FACT
- DFW: Unsafe taxiway crossing (This item is shared)
AUTHOR: adms
2018-10-19 15:30:36
SHARED WITH: FACT

Dispatchers Airport Authority Horizon Air United Airlines

Current Status



- Patented on March 12, 2019
- Available for licensing from NASA
- Working on predictive algorithms