

1-1-2009


New starches: Physicochemical properties of sweetsop (*Annona squamosa*) and soursop (*Annona muricata*) starches

L M. Nwokocha

Peter A. Williams

Glyndwr University, p.a.williams@glyndwr.ac.uk

Follow this and additional works at: <http://epubs.glyndwr.ac.uk/cwsp>

 Part of the [Carbohydrates Commons](#), [Food Science Commons](#), [Inorganic Chemistry Commons](#), [Macromolecular Substances Commons](#), [Materials Chemistry Commons](#), [Physical Chemistry Commons](#), and the [Polymer Chemistry Commons](#)

Reprinted from Carbohydrate Polymers (journal website is here href="http://www.sciencedirect.com/science/journal/01448617">http://www.sciencedirect.com/science/journal/01448617, 78 (3), Nwokocha, L.M. and Williams, P.A., New starches: Physicochemical properties of sweetsop (*Annona squamosa*) and soursop (*Annona muricata*) starches, Pages 462-468. Copyright © 2009 Elsevier All rights reserved. Reproduced here with permission from Elsevier. The full published article can be found at <http://www.sciencedirect.com>

Recommended Citation

Nwokocha, L.M. and Williams, P.A., (2009) 'New starches: Physicochemical properties of sweetsop (*Annona squamosa*) and soursop (*Annona muricata*) starches'. *Carbohydrate Polymers*, 78 (3), 462-468

This Article is brought to you for free and open access by the Materials Science at Glyndŵr University Research Online. It has been accepted for inclusion in Centre for Water Soluble Polymers by an authorized administrator of Glyndŵr University Research Online. For more information, please contact d.jepson@glyndwr.ac.uk.

NEW STARCHES: Physicochemical properties of sweetsop (*Annona squamosa*) and soursop (*Annona muricata*) starches

Louis M. Nwokocha¹, Peter A. Williams^{2,*}

¹Department of Chemistry, University of Ibadan, Ibadan, Nigeria

²Centre for Water Soluble Polymers, Glyndwr University, Wrexham, LL11 2AW, UK.

*Corresponding author

Abstract

Starch from the fruits of sweetsop (*Annona squamosa*) and soursop (*Annona muricata*) were isolated and purified and the fat, ash, phosphorus and protein contents measured. The amount of amylose present was determined spectrophotometrically and found to be very similar (~19%) for both starches. Scanning electron microscopy showed very small indented and spherical granules from both with an average granule size of 4.84 μm and 4.72 μm , respectively. The physicochemical properties, namely the swelling power, solubility, pasting characteristics, paste clarity and freeze-thaw stability were studied to assess the functionality of the starch pastes as hydrocolloids. The sweetsop starch showed higher swelling power and solubility compared to soursop starch and had a lower gelatinization temperature indicating a weaker granular structure. Sweetsop starch exhibited a lower pasting temperature, higher viscosity peak, higher viscosity breakdown and lower setback, higher paste clarity and freeze-thaw stability compared to soursop starch. The low gelatinization temperature and high freeze thaw stability of sweetsop starch are comparable to that of waxy corn.

The properties of sweetsop indicate that it has potential for application as a thickener in frozen foods.

Keywords: sop starches, composition, physicochemical properties, rheological properties.

1. Introduction

Starch remains a major source of calories in the human diet and can be found in high concentration in the main storage organs of plants including roots/tubers, stems, seeds/grains and fruits. Starches from roots/tubers (O'Hair, 1990; Peroni and Rocha, 2006; Tetchi et al., 2007; Nwokocha et al., 2009) and seeds/grains (Lorenz, 1976; Baik and Jackowski, 2004) have been extensively studied and have application in processed food products. The search for novel starches has resulted in recent focus on fruit starches (Ketiku, 1973; Fuke and Matsuoka, 1984; Adewusi et al., 1995; Kwok, Chan (Jr) et al., 2006; Harshe and Bhagwat, 2006; Goni et al., 2008).

Annona squamosa L. (sweetsop or sugar apple) and *Annona muricata* L. (soursop) are small tropical trees or shrubs which belong to the genus *Annona* (family: *Annonaceae*). They are presently cultivated on small scale for their fruits. Fifteen plants have been listed as belonging to this genus in PlantFiles (Dave's garden plant database). Starch from *Annona reticulata* (Harshe and Bhagwat, 2006) and *Annona cherimoya* (Goni et al, 2008) fruits have been isolated and characterized. Starches from sweetsop and soursop fruits have not been reported. The fruits of sweetsop and soursop are oval or heart-shaped with tender soft pliable spines which breakup easily when the fruit is ripe. Soursop fruits are bigger and larger; about 10-30cm long and could weigh as much as 4.5 kg (Morton, 1987) while sweetsop fruits weigh about 0.1 to 0.15 kg. Sweetsop and soursop fruits have been used as food for a long time and for

making exotic drinks (Morton, 1987). The carbohydrate content has been reported to be 14.63-15.1 % in soursop pulp (Morton, 1987) and 19-25% in sweetsop (Duke and DuCellier, 1993). We have isolated starch from sweetsop and soursop fruits and examined the granule structure, pasting and rheological properties, as a way of finding its suitability for food application.

2.0 Materials and Methods.

2.1 Isolation of starch.

The fruits were washed, peeled and seeds extracted. The pulp was cut into pieces 5-6 cm cubes and immediately rinsed in sodium sulphite solution and sun dried. The dried chips were converted to flour using a Philips blender mill. Known weight of the flour was dispersed in five times its weight of distilled water for 2 hr. This was sieved with a muslin cloth. The residue was washed with water until the wash water was clean.

The dirty starch milk was then centrifuged at 5,000 rpm for 30 minutes and the supernatant was decanted. The resulting starch sediment, which contained a thin brown mucous layer, was dispersed in a solution of 0.3% sodium hydroxide (w/v) and washed repeatedly with the same until a clean white starch resulted on centrifuging.

The clean starch was dispersed in distilled water and washed repeatedly until the washing water was neutral to litmus. The recovered starch was sun-dried and stored in an airtight container.

2.2 Proximate Analysis

Moisture was determined by oven-drying the starch sample at 105°C overnight. The oven dried samples were used in further analysis. The ash, fat, crude protein (N x 6.25), phosphorus, free sugar and starch were determined by standard methods (International Institute of Tropical Agriculture, 1995).

2.3 Blue value and Amylose content

To 0.1 g starch in a test tube was added 1 ml of ethanol (95%) to disperse the starch followed by 9 ml of 1M NaOH solution and heated in a water bath to gelatinize the starch. This was transferred quantitatively into a 100 ml standard volumetric flask and made up to the mark with distilled water. 5ml of the solution was taken into a 100 ml volumetric flask and 1 ml of 1M acetic acid added followed by 2 ml stock iodine (0.2g I₂/2g KI) solution and made up to mark with distilled water. This was left for 20 min for the colour to fully develop. The solution was put in a 1 cm cuvette and scanned in a Lambda 25 UV/Visible Spectrophotometer (wavelength 350-950 nm, scan speed 480 nm/min) using iodine solution at the same concentration but without starch in the reference cell. A calibration curve was prepared with pure potato amylose (Sigma-Aldrich, UK) from which the amylose content of the starch was obtained by extrapolation from the absorbance-amylose concentration curve. The absorbance readings were measured at 620 nm (Juliano, 1971).

The blue value was calculated as:

Maximum absorbance X 4

Starch concentration (mg/dL)

2.4 Starch Microscopy

Granule micrographs were obtained with a JSM 35 Genie Scanning Electron Microscope (SEM). The starch was sprinkled onto a double-backed adhesive carbon tab stuck to a circular aluminum stub. The aluminum stub with the starch sample on it was placed in the vacuum chamber of a Polaron PS 3 sputter coater, after attaining a vacuum of 0.1 to 0.2 torr and plasma current of 42mA, gold coating process was carried out for 140 seconds. The stub with gold coated starch was then placed in the

SEM chamber which was evacuated before the electron beam was turned on. A 10kV / 2.05A setting was used for the subsequent imaging work on starch, the aperture size being fixed at 3. Granule size analysis was obtained on a BT1600 Image Analyzer at a magnification of 40X.

2.5 Physicochemical Characterization

2.5.1 Determination of swelling power and solubility

Swelling power and solubility was determined using an aqueous dispersion of 0.5g starch (d,b) in a pre-weighed centrifuge tube and 25ml distilled water. The tubes were immersed in a thermostatic Clifton water bath maintained at 80°C for 30 minutes and thoroughly stirred with a glass rod all through the heating period. The tubes were removed, cooled to room temperature and centrifuged at 5000 rpm for 15 minutes. The supernatant was carefully transferred into a pre-weighed crucible, evaporated over a steam bath and dried in the oven at 120°C to constant weight. The weight of the paste was determined and used to calculate the swelling power as weight of sedimented paste per gram of dry starch. The difference in weight after drying the supernatant gave the weight of the soluble material and was used to calculate the percentage solubility as weight of soluble material per dry weight of starch.

2.5.2 Determination of pasting characteristics

The pasting characteristics were determined with a Rapid Visco-Analyzer ((RVA series 4, Newport Scientific, NSW, Australia) on a 12 % starch slurry. Sample (3g, dry basis) was weighed and dispensed into a canister together with 25ml of water. The paddle was placed centrally inside the canister and then inserted into the RVA machine. The measurement cycle was initiated and the profile determined over 12 min. The time-temperature regime used was: Idle temperature 50°C for 1 min, heated

from 50°C to 95°C in 3 min 45s, then held at 95°C for 2 min 30s, the sample was subsequently cooled to 50°C over a 3 min 45s period followed by a period of 2 min where the temperature was controlled at 50°C.

2.5.3 Determination of paste clarity

Paste clarity was determined by the method of Singhal and Kulkarni (1990) by measuring the percentage light transmitted by different concentrations of starch (0.5 to 4.0%) at 660nm on a UV/Visible Spectrophotometer. Distilled water was used in the reference cell.

2.5.4 Determination of freeze-thaw stability

The freeze-thaw stability was determined according to the method of Singhal and Kulkarni (1990). The determination was carried out by heating 5% (w/v) starch (d,b) in distilled water at 95°C for 30 minutes with constant stirring. This was then removed and stirring continued during cooling to avoid formation of skin. 10ml of paste was transferred to weighed centrifuge tubes. The weight of the paste was then determined. This was subjected to alternate freezing and thawing cycles (18 hr, 3 hr, respectively) for 9 days, centrifuged at 5000rpm for 10 minutes after each cycle and the percentage water separated determined as weight of exudates to the weight of paste.

2. 5.5 Rheological properties

The rheological properties of the starch pastes were measured on 8% starch pastes. The pastes were prepared by heating starch in aqueous dispersion (8%, w/v) in a water bath maintained at 99°C for 30 min. The starch dispersion was stirred within the first minute of immersion during which pasting occurred. The stirring was stopped and the sample left to cook for 30 min. The paste was removed and left at 25°C and

the rheological properties examined after for 1 hr. The flow properties were measured on a controlled stress Rheometer (AR 2000, TA Instruments Ltd) with cone and plate geometry (40 mm, 2° cone and 52µm gap). Measurements were carried out at 25°C at shear rates of 10⁻¹ to 120s⁻¹. The TA Data Analysis software was used to fit the Power law model (Equation 1) into the viscosity-shear rate profiles.

$$\sigma = \eta(\dot{\gamma})^N \quad \text{Equation 1}$$

Where σ = shear stress (Pa), η = viscosity (Pa.s), $\dot{\gamma}$ = shear rate (1/s) and N= rate index.

The viscoelastic properties of the starch pastes were determined by carrying out a frequency sweep in the range of 10⁻¹ to 120 rads⁻¹ within the viscoelastic region (strain, 0.05 %). The linear viscoelastic region was obtained by performing a stress sweep within the range of 0.01 to 50 Pa at an angular frequency of 2.683 rads⁻¹. The variation of storage modulus (G') and loss modulus (G'') with angular frequency was analyzed by the TA Data Analysis software.

2.5.6 Statistical analysis

Analysis of variance was done with MATLAB 7.6.0. One- way ANOVA was used to compare sample means at 95% confidence level.

3. RESULTS AND DISCUSSION

3. 1 Starch composition

Table 1 shows the yield and composition of sweetsop (*Annona squamosa*) and soursop (*Annona muricata*) starches. Starch composition of sweetsop was 25.6 % and soursop 27.3%. Harshe and Bhagwat (2006) reported starch yield of 19% for *Annona reticulata*. The moisture content was ~ 9% for both starch samples. Both starches

showed a statistical difference ($p < 0.05$) in the content of fat, ash, amylose and starch purity. Starch phosphorus of 25.5mg/100g has been reported for Kiwi fruit starch (Fuke and Matsuoka, 1984), this value is similar to that found for soursop starch. Starch phosphates have been reported to greatly affect starch physicochemical properties. The presence of phosphate weakens intermolecular association of the starch molecules and lowers the energy requirements for the gelatinisation process (Smith, 1982). Figure 1 shows the starch-iodine absorption spectra for sweetsop and soursop starches. The two starches had similar absorption characteristics (Table 2). The blue value of sweetsop was 0.4295 and soursop 0.4226. The amylose content of sweetsop (19.35 %) and soursop (19.31 %) was in the range (18 – 30 %) found in normal starches. Lower amylose composition has been reported for kiwi fruit starch (10.8%) (Fuke and Matsuoka, 1984) and passion fruit starch (yellow variety, 8.7%; purple variety, 5.8%) (Kwot et al., 2006). Amylose composition in starch has been reported to affect starch physicochemical properties and reactivity (Thomas and Atwell, 1999; Kuakpetoon and Wang, 2006; Kitahara et al., 2007).

3. 2 Granule size distribution, morphology and gelatinization properties

The scanning electron micrographs of sweetsop and soursop starches are presented in Figure 2a and 2b, respectively. The shape of the granules is spherical, truncated and irregular. The granule size distributions of sweetsop and soursop obtained using an image particle size analyzer are presented in Figure 3a and 3b, respectively, while the particle size image analysis is in Table 3. Sweetsop starch has a granule size range of 2.92 – 6.42 μm , granule average of 4.84 μm , L/D of 1.20 and roundness of 0.73. For soursop, starch granule size ranged from 2.49 – 7.68 μm , granule average 4.72 μm , L/D 1.23 and roundness 0.70. The granules of sweetsop and soursop can be classified as very small to small according to the classification of Lindeboom et al., (2004).

Granules of passion fruit are of the order of 6.4 – 7.8 μm (Kwot et al., 2006) while kiwi fruit starch granules averaged 5.5 μm . This might indicate the *Annona* fruit starches consist of very small granules. The gelatinization process was investigated by determining the gelatinization parameters: onset (T_o), peak (T_p), completion (T_c) and enthalpy change (ΔH) by differential scanning calorimetry. The endothermic heat flow and the results of analysis are presented in Figure 4 and Table 4, respectively. Sweetsop starch started gelatinizing at a temperature of 64.12 $^{\circ}\text{C}$ and completed at 72.99 $^{\circ}\text{C}$ with an endothermic enthalpy of 10.62 J/g while in soursop gelatinization started at 65.67 and completed at 75.30 $^{\circ}\text{C}$ with an endothermic enthalpy of 4.58 J/g. The gelatinization parameters indicate weaker intragranular bonds strength or a lesser crystalline structure in sweetsop starch compared with soursop starch. When compared with some regular starches (Table 4), the gelatinization temperature peaks of sweetsop and soursop were higher than those of potato and cassava but close to sago and waxy corn, with sweetsop similar to waxy corn. Starch gelatinization is affected by the degree of crystallinity, amylose/amylopectin ratio, molecular mass, granule architecture and amylose-lipid complexes. Goni et al, (2008) have reported gelatinization peak temperatures of 63.7-65.2 $^{\circ}\text{C}$ and enthalpies of 14.8-15.9J/g for cherimoya fruit starch during ripening. Fuke and Matsuoka, (1984) reported a gelatinization temperature of 72 $^{\circ}\text{C}$ for kiwi starch while Kwot et al., (2006) reported gelation temperatures for varieties of passion fruit (yellow, 58.5-67.0 $^{\circ}\text{C}$; purple, 58.5-66.5 $^{\circ}\text{C}$).

3.3 Swelling power and solubility

Swelling power and solubility of starches provide evidence of the crystalline nature of the granules (Leach et al., 1959). From Table 5, the swelling power of sweetsop (42.37 g/g starch) was higher than of soursop (27.40 g/g starch) and the solubility of

sweetsop (16.75%) was higher than of soursop (13.99%); with both parameters being significantly different for the two starches ($p < 0.05$). This indicates that sweetsop has a weaker granule structure than soursop. When starch dispersions are heated in water, the granules acquire thermal energy; the resulting thermal agitations weaken the intra-granular bonds in proportion to the strength of the binding forces. Weaker forces relax first causing the granules to absorb water and swell, the lower molecular weight amylose solubilizes and leaches out of the granule into the surrounding medium. Increased thermal agitation causes significant swelling of the granules and the internal bonds become fragile. At a critical stress point, the swollen envelope ruptures becoming a ghost, releasing the majority of the internal starch molecules, while a majority of the starch polymers remain trapped by the collapsed ghost (Atkin et al., 1998). Previous workers have demonstrated that high swelling and solubility is due to the existence of a loose granule structure and low molecular weight amylose which leaches out of the amorphous domains of the starch granules (Balagopalan et al., 1988; Nwokocha et al., 2009). The swelling and solubility of starch granules have been reported to be affected by amylose/amylopectin ratio, the characteristics of each fraction in terms of molecular weight, length/degree of branching and the physical manner in which these constituents are arranged within the starch granules together with the presence of naturally occurring non carbohydrate impurities (Leach, 1965). Amylose has been reported to inhibit swelling, especially in the presence of lipids which can form insoluble complexes with some of the amylose during swelling and gelatinization (Leach *et al.*, 1959; Zeleznak and Hosney, 1987).

3.4 Paste viscosity: The pasting characteristics are shown in Table 6 while the pasting curves are shown in Figures 5a and 5b. Sweetsop starch started pasting at 74.75°C and attained a viscosity peak of 578.25 RVU in 4.30 min. On holding at 95°C, the

viscosity thinned down to 247.25 RVU and on cooling to 50°C retrograded to a final viscosity of 317.25 RVU. For soursop starch, pasting occurred at a higher temperature (77.55°C), attained a viscosity peak at 428.92 RVU in 4.69 min, and on holding at 95°C, the viscosity dropped to 284.67 RVU and retrograded to a final viscosity of 375.67 RVU on cooling to 50°C. Sweetsop starch paste suffered more viscosity breakdown (331 RVU) than soursop starch paste (144 RVU) indicating a poor capacity of the starch paste to withstand severe processing conditions. The very low setback of the starch pastes especially sweetsop indicates a potential for use in frozen foods (Pal et al., 2002).

3.5 Paste clarity and freeze-thaw stability

From Figure 6, sweetsop had higher paste clarity than soursop at all starch concentrations. The stability of a given starch paste to retrogradation and its suitability for use in frozen foods is determined by the level of syneresis when subjected to freeze-thaw cycles. A starch paste is freeze-thaw stable if it releases little or no exudate when subjected to freeze-thaw cycles. From Figure 7, sweetsop starch survived three freeze-thaw cycles before any noticeable syneresis occurred and achieved a maximum exudate of 15.6% after eight freeze-thaw cycles. Soursop starch survived the first freeze-thaw cycle and achieved maximum separation of 43% after eight freeze-thaw cycles. These values indicate that sweetsop has good freeze-thaw stability. It also has a lower retrogradation tendency than soursop. The freeze thaw stability of sweetsop is comparable to that of waxy corn starch (Takeiti et al., 2007). High freeze-thaw stability has been reported for *Amaranthus hypochondriacus* starch paste which survived four freeze-thaw cycles before significant syneresis occurred (Yanez et al., 1986), however, positive syneresis has been reported for starch isolated

from plantain fruits (Perez-Sira, 1997; Nwokocha and Williams, 2009). There is no available data on freeze-thaw stability of sop starches.

3.6 Rheological properties:

The viscosity of 8% gels of sweetsop and soursop starch pastes are shown as a function of shear rate in Figure 8. The curves are almost superimposed and show that the viscosity decreases with increasing shear rate. The rate index, N , is low (0.24 and 0.28 for sweetsop and soursop respectively), confirming the pastes are highly shear thinning in common with other starches such as corn (Malumba et al., 2009). Figure 9 presents the mechanical spectra for the two starches. The storage modulus, G' , is significantly greater than the loss modulus, G'' , for the two samples and both moduli exhibit some frequency dependence indicating weak gel characteristics. G' and G'' values have been reported to be a function of starch molecular weight (Della Vale et al., 1998).

4. CONCLUSION

Starch isolated from sweetsop and soursop fruits has been characterized. Both starches had small granules (2.49-2.76 μm), similar amylose composition (~19%) and gelatinization temperatures (sweetsop, 64.12-72.99°C; soursop, 65.67-75.30 °C). The sweetsop starch showed higher swelling power and solubility, lower pasting temperature, higher viscosity peak, higher viscosity breakdown and lower setback; higher paste clarity and freeze-thaw stability compared to soursop starch. Both starches indicated weak gel characteristics. The functionality of sweetsop starch is comparable to those of waxy corn and *Amaranthus hypochondriacus* starches, making it a candidate for use in instant or frozen foods.

REFERENCES

- Adewusi, S. R. A., Udio A. J. and Osuntogun B. A. (1995). Studies on the carbohydrate content of breadfruit (*Artocarpus communis* Forst) from south-western Nigeria. *Starch/Starke* 47 (8), 289-294.
- Ahmad, F.B., Williams, P.A., Doublier, J-L., Durand, S. and Buleon, A. (1999). Physicochemical characterization of sago starch. *Carbohydrate Polymers* 38, 361-370.
- Atkin, N.J., Abeysekera, R.M. and Robards, A.W. (1998). The events leading to the formation of granule ghost remnants from the starch granule surface and the contribution of the granule surface to the gelatinization endotherm. *Carbohydrate Polymers* 36, 193-204.
- Baik, B-Y. and Jackowski, R. (2004). Characteristics of Granular Cold-Water Gelling Starches of Cereal Grains and Legumes Prepared Using Liquid Ammonia and Ethanol. *Cereal Chemistry* 81(4), 538-543.
- Balagopalan, C., Padmaja, G., Nanda, S. K., and Moorthy, S. N. (1988). Cassava in Food, Feed and Industry. CRC Press Inc., Boca Raton, Florida, USA. (pp. 126–127).
- Della Vale, G., Buleon, A., Carreau, P.J., Lavoie, P.-A. and Vergnes, B. (1998). Relationship between structure and viscoelastic behavior of plasticized starch. *Journal of Rheology* 42(3), 507-525.
- Duke, J.A. and DuCellier, J.L. (1993). CRC Handbook of Alternative Cash Crops. Published by CRC Press, Boca Raton, FL. (pp 41-46).
- Fuke, Y. and Matsuoka, H. (1984). Studies on the Physical and Chemical Properties of Kiwi Fruit Starch. *Journal of Food Science* 49 (2), 620 – 622.

Goni, O., Escribano, M.I. and Meridio, C. (2008). Gelatinization of native starch from *cherimoya* fruit during ripening, using differential scanning calorimetry. *LWT-Food Science and Technology* 41(2), 303 -310.

Harshe, S. N. and Bhagwat, M. S. (2006). Studies on Starch Isolated from the Fruits of *Annona reticulata* (Ramphal). *Starch/Starke* 28(8), 257-259.

International Institute of Tropical Agriculture. (1995). Selected Laboratory Methods for Maize Quality Evaluation. International Institute of Tropical Agriculture (IITA) Press, Ibadan, Nigeria. (pp1-60).

Juliano, B.O. (1971). A simplified assay for milled-rice amylose. *Cereal Chemistry Today* 16, 334-340.

Kayisu, K., Hood, L.F. and van Soest, P.J. (1981). Isolation and characterization of starch and fibre of banana fruit. *Journal of Food Science* 46, 1885- 1890.

Ketiku, O.A. (1973). Chemical composition of unripe (green) and ripe plantain (*Musa paradisiaca*). *Journal Science of Food Agriculture* 24, 703-707.

Kitahara, K., Hamasuna, K., Nozuma, K., Otani, M., Hamada, T., Shimada, T., Fujita, K. and Suganuma, T. (2007). Physicochemical properties of amylose-free and high-amylose starches from transgenic sweetpotatoes modified by RNA interference. *Carbohydrate Polymers*, 69 (2), 233-240.

Kuakpetoon, D. and Wang, Y.J. (2006). Structural characteristics and physicochemical properties of oxidized corn starches varying in amylose content. *Carbohydrate Research* 341 (11), 1896-1915.

Kwok, S. C. M., Chan (Jr), H. T., Nakayama, T. O. M. and Brekke, J. E. (2006). Passion Fruit starch and effect on Juice Viscosity. *Journal of Food Science* 39 (3), 431 – 433.

Leach, H.W. 1965. Gelatinization of Starch. In *Starch: Chemistry and Technology*. Volume 1. R.L. Whistler and E.F. Paschal (eds), Academic Press, New York. (pp289-307).

Leach, H.W., McCowen, L.D. and Schoch, T.J. (1959). Structure of the starch granule. 1. Swelling and solubility patterns of various starches. *Cereal Chemistry* 36, 534 –544.

Lindeboom, N., Chang, P.R. and Tyler, R.T. (2004). Analytical, biochemical and physicochemical aspects of starch granule size, with emphasis on small granule starches: A review. *Starch/Starke*, 56, 89-99.

Loos, P.J., Hood, L.F. and Graham, H.D. (1981). Isolation and characterization of starch from breadfruit. *Cereal Chemistry* 58, 282- 286.

Lorenz, K. (1976). Physico-chemical Properties of lipid-free Cereal Starches. *Journal of Food Science* 41 (6), 1357 – 1359.

Malumba, P., Massaux, C., Deroanne, C., Masimango, T. and Bera, F. (2009). Influence of drying temperature on functional properties of wet-milled starch granules. *Carbohydrate Polymers* 75, 299 – 306.

Morton, J. (1987). Soursop. In: *Fruits of Warm Climates*. (pp 75-80).

<http://www.hort.purdue.edu/newcrop/morton/soursop.html>

Nwokocha, L. M. and Williams, P.A. (2009). Some properties of white and yellow plantain (*Musa paradisiaca*, Normalis) starches. *Carbohydrate Polymers*, 76 (1), 133-138.

Nwokocha, L.M., Aviara, N. A., Senan, C. and Williams, P.A. (2009). A comparative study of some properties of cassava (*Manihot esculenta*, Crantz) and cocoyam (*Colocasia esculenta*, Linn) starches. *Carbohydrate Polymers* 76, 362-367.

O'Hair, S.K. (1990). Tropical Root and Tuber Crops. In: J. Janick and J.E. Simon (eds.), *Advances in New Crops*. Timber Press, Portland, OR. (pp 424-428).

Onimawo, I.A. (2002). Proximate composition and selected physicochemical properties of the seed, pulp and oil of soursop (*Annona muricata*). *Plant Foods for Human Nutrition* 57 (2), 165-171.

Perez-Sira, E. (1997). Characterization of Starch Isolated from Plantain (*Musa Paradisiaca normalis*). *Starch/Starke* 49, 45-49.

Peroni, F. H.G. and Rocha, T. S. (2006). Some Structural and Physicochemical Characteristics of Tuber and Root Starches. *Food Science and Technology International* 12 (6), 505-513.

Pal, J., Singhal, R. S. and Kulkarni, P. R. (2002). Physicochemical properties of hydroxypropyl derivative from corn and amaranth starch. *Carbohydrate Polymers* 48 (1), 49-53.

PlantFiles: Dave's garden plant database. <http://davegarden.com/guides/pf/>

Singhal, R.S. and Kulkarni, P.R. (1990). Some Properties of *Amaranthus paniculatas* (Rajgeera) Starch Pastes. *Starch/Starke* 42 (1), 5-7.

Smith, P.S. (1982). Starch Derivatives and Their Use in Foods. In: *Food Carbohydrates*. Lineback, D.R., Inglett, G.E. (eds.) AVI Publishing Company Inc., Westport Connecticut. (pp 245).

Takeiti, C., Fakhouri, F., Ormenese, R., Steel, C. and Collares, F. (2007). Freeze-thaw Stability of Gels Prepared from Starches of Non-conventional Sources. *Starch/Starke* 59 (3-4), 156 – 160.

Tetchi, F.A., Rolland-Sabate, A., N'guessan Amani, G. and Colonna, P. (2007). Molecular and physicochemical characterisation of starches from yam, cocoyam, cassava, sweet potato and ginger produced in the Ivory Coast. *Journal of the Science of Food and Agriculture* 87 (10), 1906-1916.

Thomas, D.J. and Atwell, W.A. (1999). *Eagan Press Handbook Series: Starches*. Eagan Press, St. Paul, Minnesota, USA. (pp 4-7).

Yanez, G.A., Messinger, J.K., Walker, C.E. and Rupnow, J.H. (1986). *Amaranthus hypochondriacus*: Starch isolation and partial characterization. *Cereal Chemistry* 63 (3), 273-276.

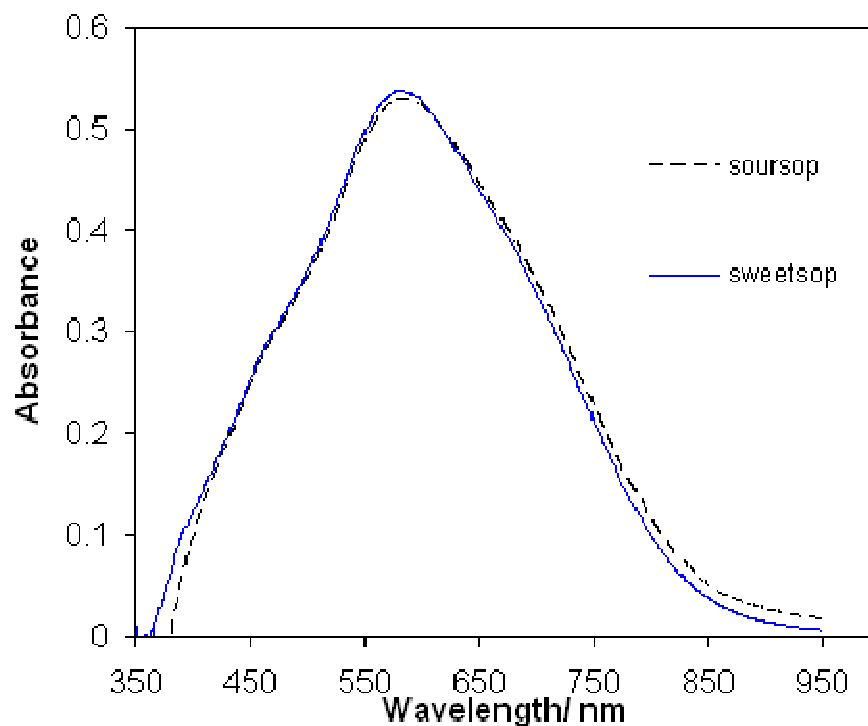


Figure 1: Absorption spectra of starch-iodine complexes of sweetsop and soursop starches

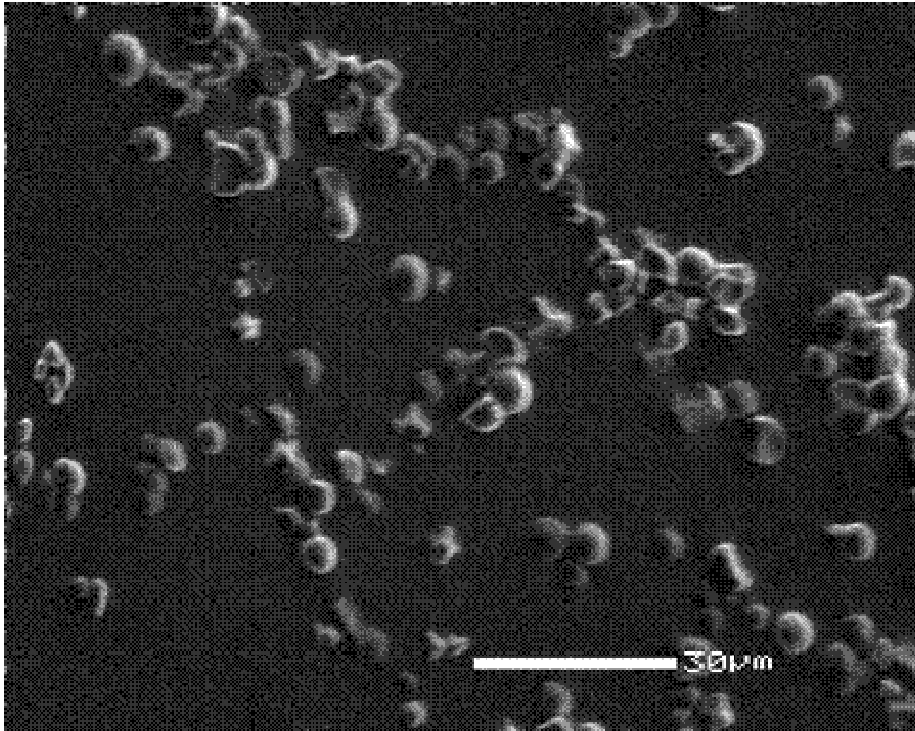


Figure 2a: Scanning electron micrographs of soursop starch granules (A) X 1600.

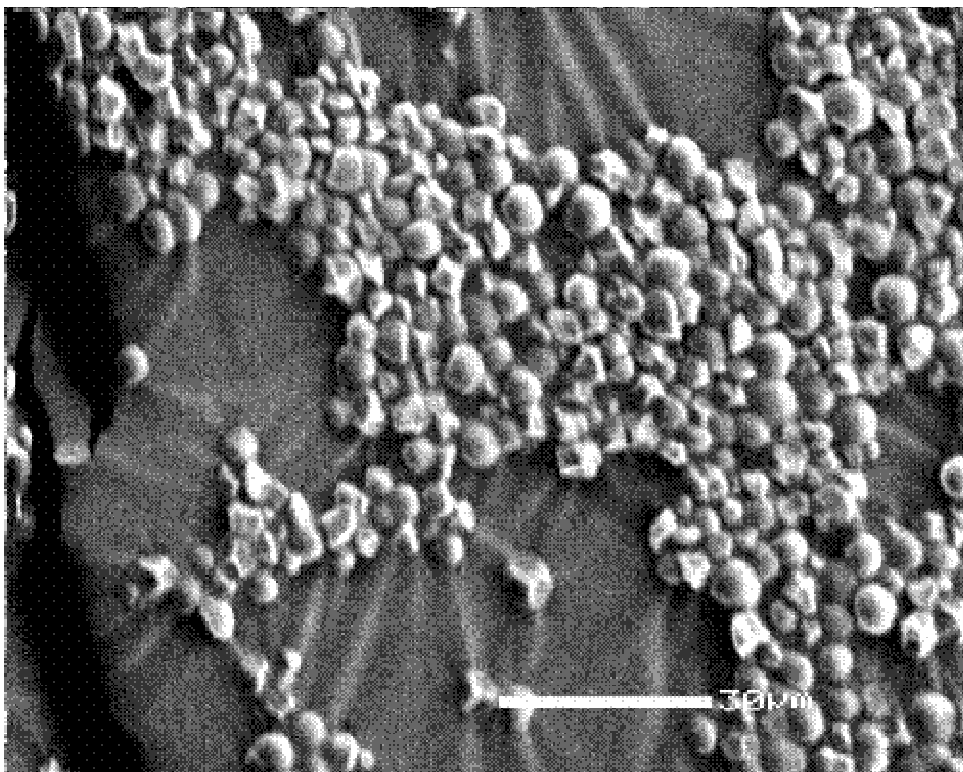


Figure 2b: Scanning electron micrographs of sweetsop starch granules (B) X1600

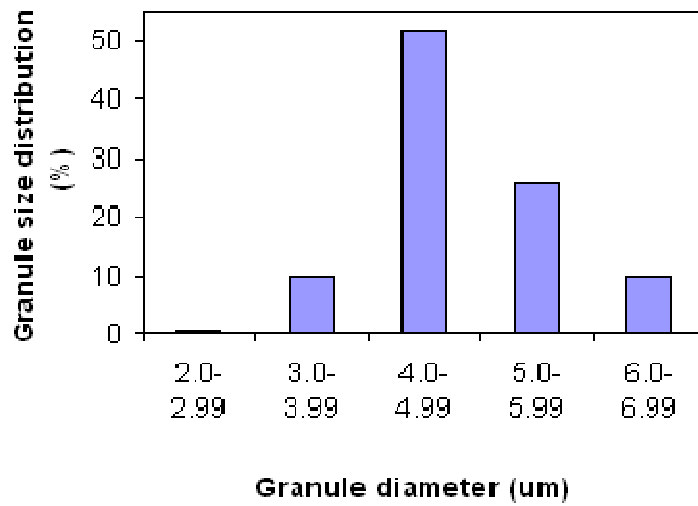


Figure 3a: Granule size distribution of sweetsop starch

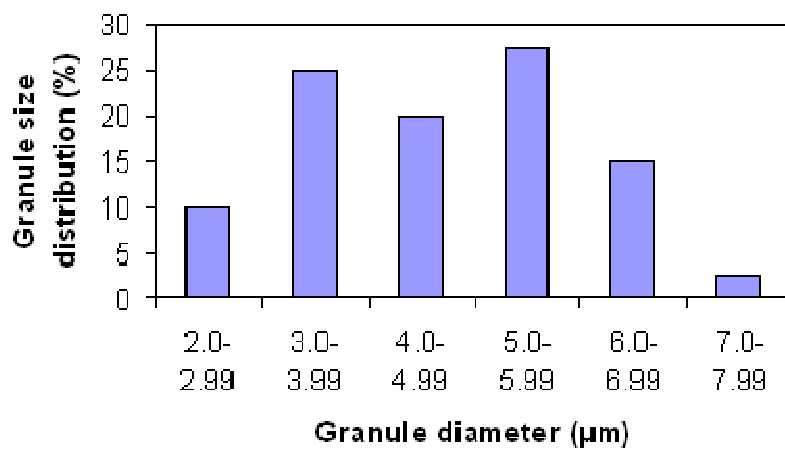


Figure 3b: Granule size distribution of soursop starch

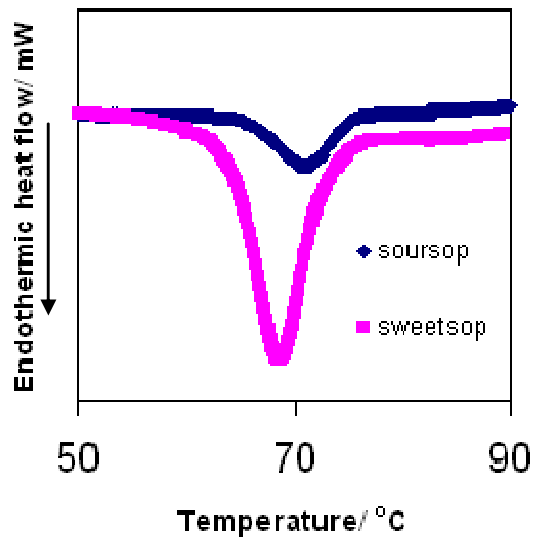


Figure 4: DSC thermograms of 10% dispersions of sweetsop and soursop starches

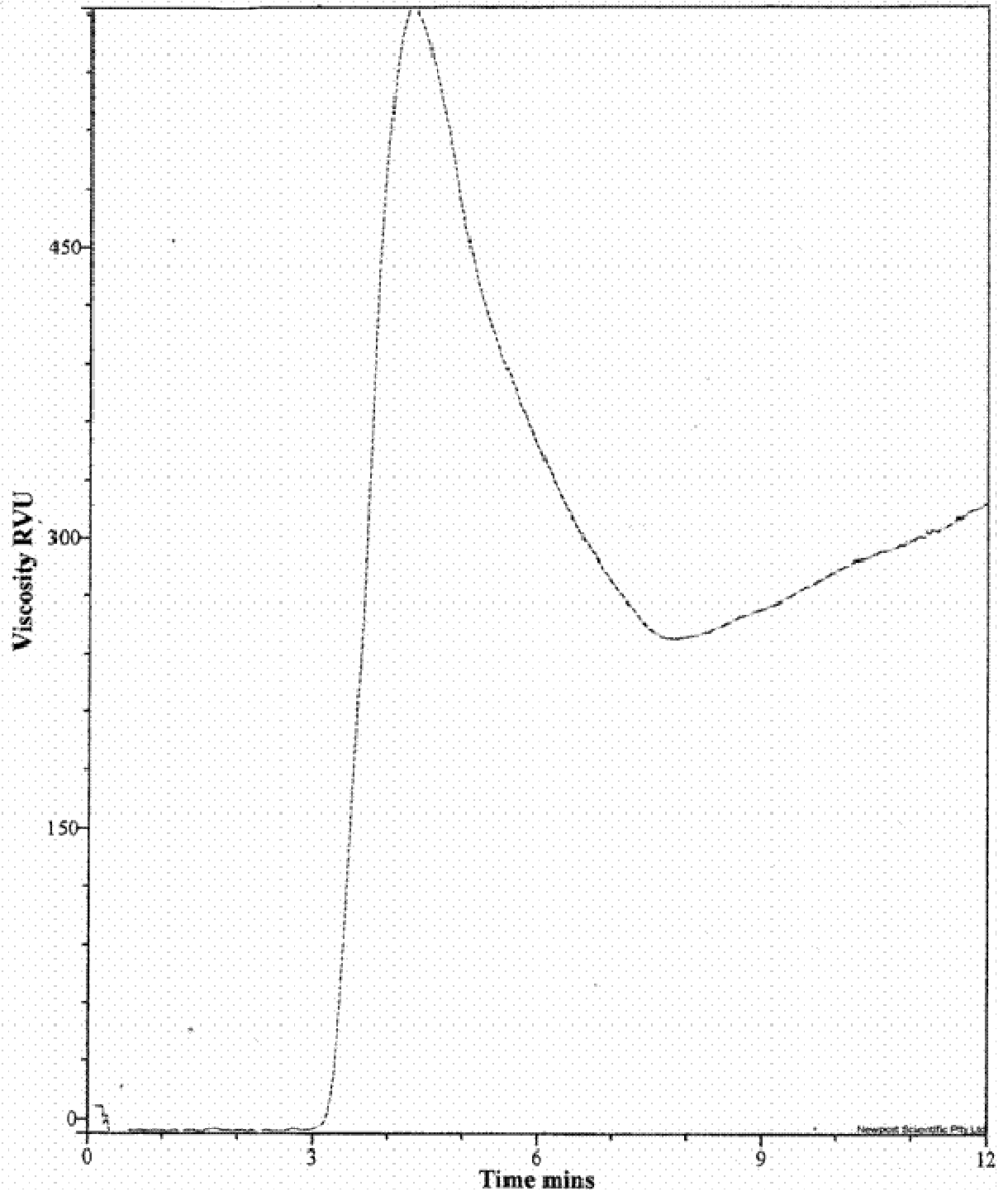


Figure 5a: RVA pasting curve for sweetsop starch

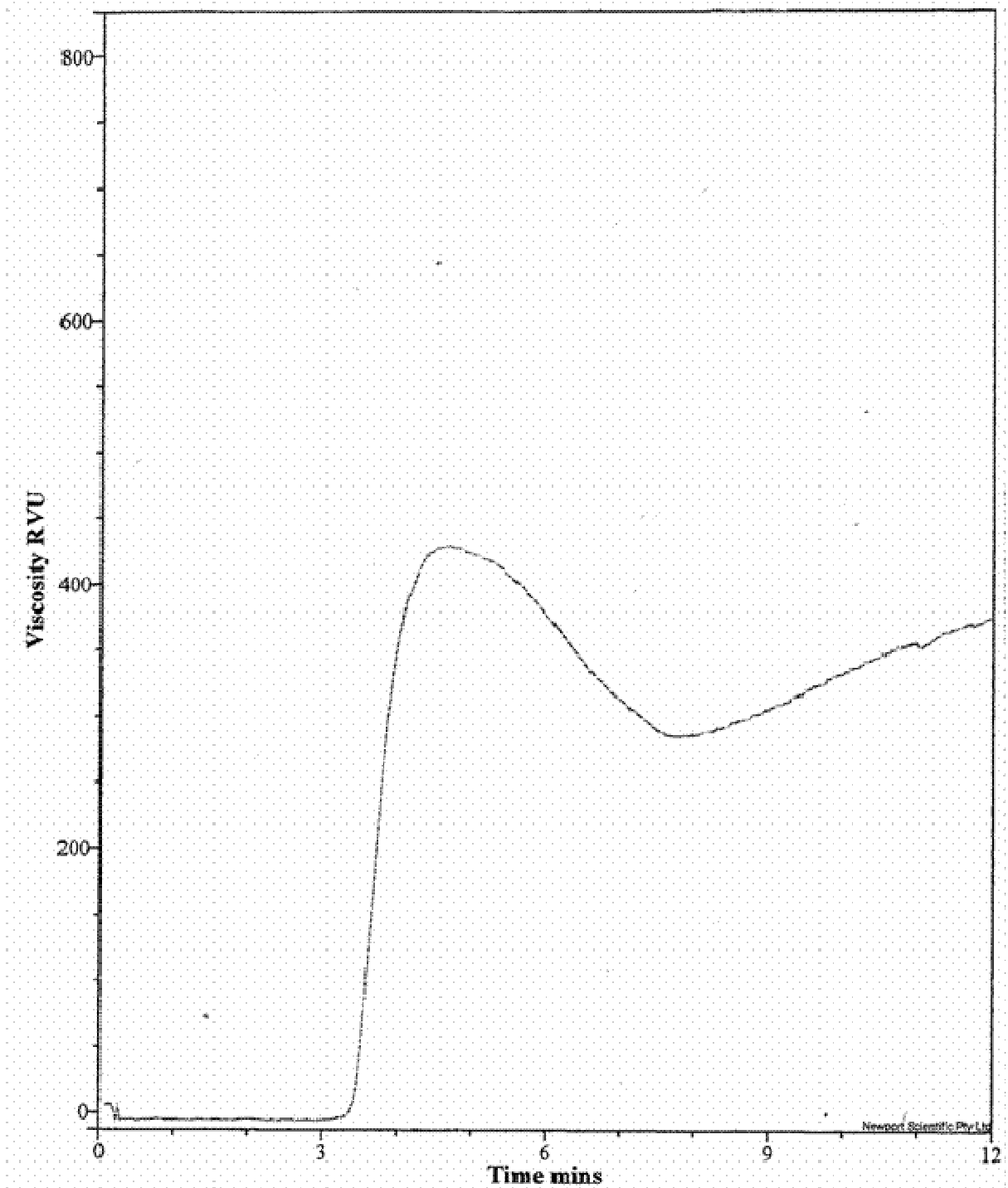


Figure 5b: RVA pasting curve for soursop starch

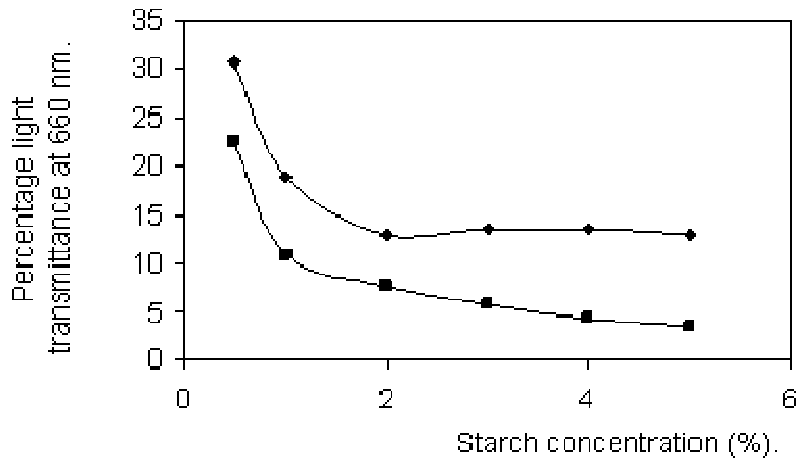


Figure 6: Paste clarity of sweet sop and sour sop starches.

◆ Sweet sop ■ Sour sop

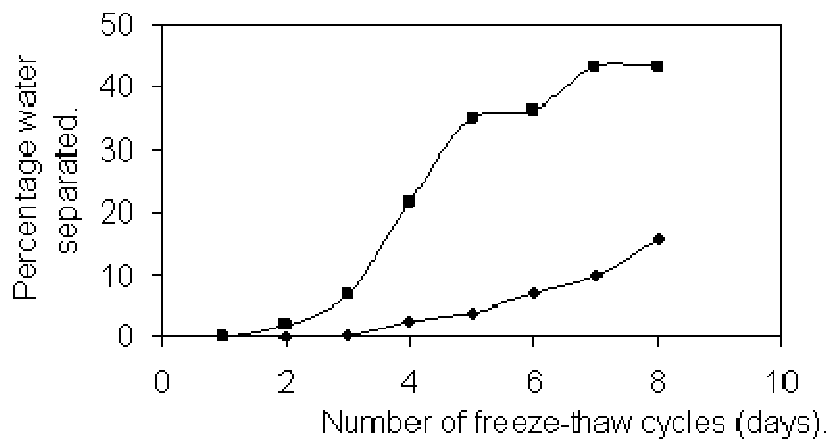


Figure 7: Freeze-thaw stability of sweet sop and sour sop starches.

◆ Sweet sop starch ■ Sour sop starch

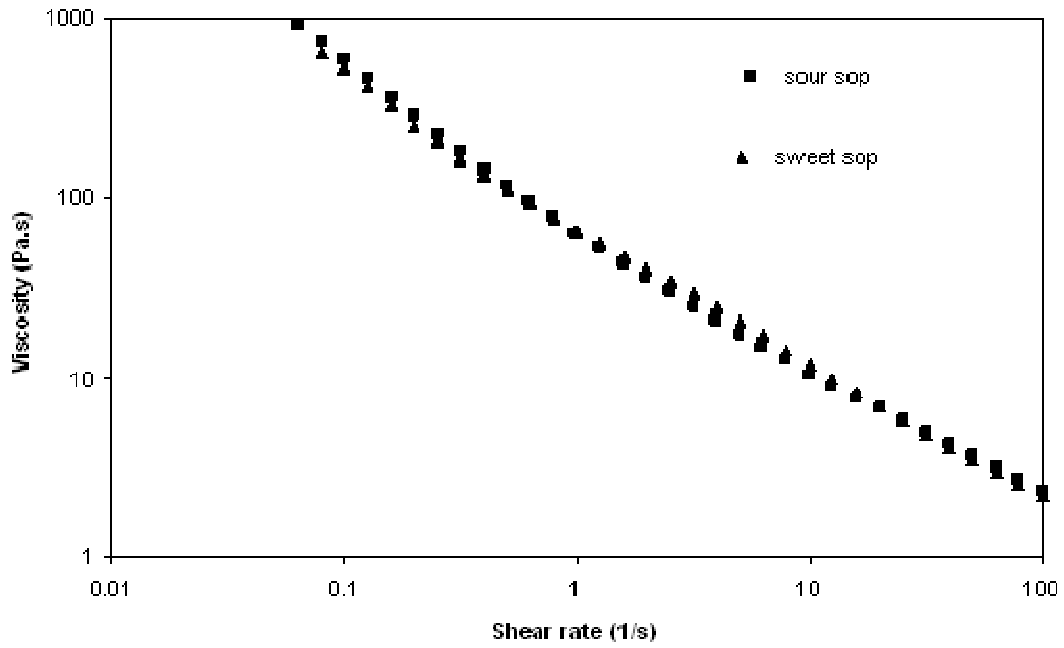


Figure 8: Viscosity-shear rate profiles of 8% gels of sour sop and sweet sop starches

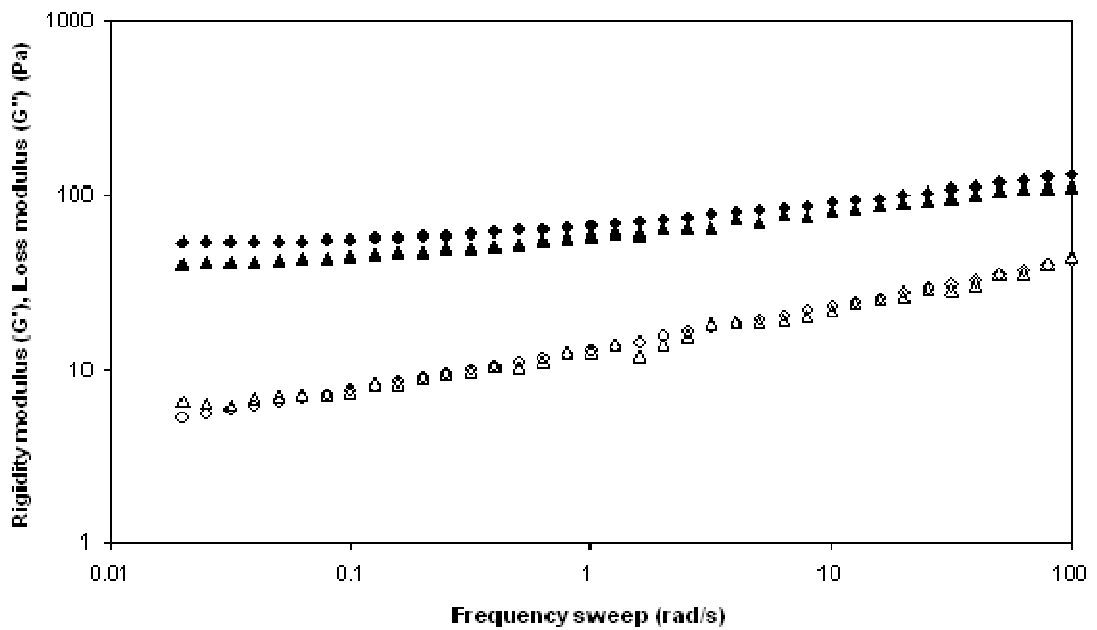


Figure 9: Frequency sweep showing G' (▲) and G'' (◊) for % gels of Sour sop (●) and sweet sop (▲) starch pastes

Table 1: Chemical composition of sweetsop and soursop starches.

Starch property	Sweetsop	Soursop
*Yield (%)	25.6	27.30
Moisture (%)	9.11±0.1 ^a	9.07±0.1 ^a
Fat (%)	0.2305±0.1 ^a	0.0107±0.0 ^b
Ash (%)	1.12±0.1 ^a	2.30±0.2 ^b
Protein (%)	0.2142±0.02 ^a	0.2324±0.03 ^a
Phosphorus (%)	0.031±0.01 ^a	0.025±0.01 ^a
Sugar (%)	3.17±0.3 ^a	2.965±0.2 ^a
Starch (%)	68.92±0.5 ^a	70.44±0.7 ^b
Amylose (%)	19.35±0.0 ^a	19.31±0.0 ^b

Averages are means of three determinations ± SD.

^{a,b} Values in the same row with same superscripts are not statistically different (p<0.05).

* Based on dry weight of flour.

Table 2: Starch-iodine absorption characteristics of sweetsop and soursop starches

Starch source	sweetsop	soursop
Wavelength of maximum absorbance (nm)	581-583	585
Absorbance	0.5369	0.5283
Blue value	0.4295	0.4226

Table 3: Granule size analysis of sweetsop and soursop starches

Particle characteristics	sweetsop	soursop
Particle number	31	40
Maximum diameter (μm)	6.42	7.77
Minimum diameter (μm)	2.92	2.76
Average granule size (μm)	4.84	4.72
Length/diameter, L/D	1.20	1.23
Roundness	0.73	0.70

Table 4: Gelatinization properties of sweetsop and soursop starches

Gelatinization parameters	sweetsop	soursop	sago [*]	waxy corn [*]	potato [*]	
cassava [*]						
Onset temperature, T _o (°C)	64.12	65.67				
Peak temperature, T _p (°C)	68.62	70.96	69.3-70.1	68.1	63.1	66.3
Completion temperature, T _c (°C)	72.99	75.30				
Gelatinization range, (T _c -T _o) (°C)	8.87	9.63				
Endothermic enthalpy, ΔH (J/g)	10.62	4.58	15.1-16.7	13.9	17.8	15.1

^{*} Ahmad, Williams, Doublier, Durand & Buleon, (1999).

Table 5: Swelling power and solubility of sweetsop and soursop starches.

Parameter	Sweetsop	Soursop
Swelling power (g/g)	42.37±0.1 ^a	27.40±0.1 ^b
Solubility (%)	16.75±0.2 ^a	13.99±0.1 ^b

Averages are means of three determinations ± SD

^{a,b}Values in the same row with different superscripts are significantly different (p<0.05)

Table 6: RVA paste viscosity analysis of sweetsop and soursop starches

Pasting property	Sweetsop	Soursop
Pasting temperature (°C)	74.75	77.55
Peak viscosity (RVU)	578.25	428.92
Pasting time (min)	4.30	4.69
Viscosity trough (RVU)	247.25	284.67
Breakdown viscosity (RVU)	331.00	144.25
Final viscosity (RVU)	317.25	375.67
Setback viscosity (RVU)	70.00	91.00
