

Cnidaria, Scleractinia, Siderastreidae, *Siderastrea siderea* (Ellis and Solander, 1786): Hartt Expedition and the first record of a Caribbean siderastreid in tropical Southwestern Atlantic

Elizabeth G. Neves^{1*}, Fábio L. da Silveira², Michel Pichon³ and Rodrigo Johnsson¹

¹ Universidade Federal da Bahia, Instituto de Biologia, Departamento de Zoologia. Avenida Adhemar de Barros s/nº, Campus Ondina. CEP 40170-290. Salvador, BA, Brazil.

² Universidade de São Paulo, Instituto de Biociências, Departamento de Zoologia. Rua do Matão, trav. 14, nº 321. CEP 05508-900. São Paulo, SP, Brazil.

³ Université de Perpignan, Ecole Pratique des Hautes Etudes, Laboratoire de Biologie Marine et Malacologie, 66860 Perpignan Cedex, France

* Corresponding author. E-mail: elizabeth.neves@gmail.com

ABSTRACT: Samples of *Siderastrea* collected by the geologist C. F. Hartt during expedition to Brazil (19th century), and deposited at the National Museum of the Natural History, Smithsonian Institution, have been re-examined. Taxonomical analyses resulted in the identification of a colony of *S. siderea* from offshore northern Bahia state. Following recent studies, the occurrence of Caribbean siderastreids to western South Atlantic provides new criteria to assess intra- and interpopulational morphological variation of the endemic *S. stellata*, refuting historical trends of synonymizations possibly biased by long-term taxonomical misunderstandings.

After assisting Louis Agassiz in the Thayer Expedition to Brazil (1865-1866), the Canadian geologist Charles Frederic Hartt (1840-1878) returned several times and explored a vast area of the Brazilian coast (Freitas 2001). An enormous collection, and a number of papers and reports resulted from these scientific explorations. Samples of scleractinian corals from the 1867 Hartt Expedition to Abrolhos Reefs, southern Bahia, were deposited in the Museum of Yale College (Verrill 1868). Based on these specimens, Verrill (1868) described nine new species, including the endemic and highly variable *Siderastrea stellata*. Colonies of *Siderastrea* from the last of Hartt's journeys (1874-1876), covering the northeastern coast, were deposited at the National Museum of Natural History, Smithsonian Institution (Washington, DC). As part of a revision of the genus *Siderastrea* (see Neves 2004), this material has been re-examined. Based on skeletal attributes, one particular specimen from Hartt's collection previously identified only at genus level was attributed to *S. siderea*. This is the first reported occurrence of *S. siderea* from Brazil, where despite of the remarkable variation and number of morphotypes, the genus has been considered to be represented solely by *S. stellata* (see Laborel 1967; 1969/70; 1974). Indeed, this 'myth' has recently been rejected in thesis by Neves (unpublished data) and Neves *et al.* (2008) by determining the sympatric distribution of *S. radians* within *S. stellata* population, majorly along the northeastern section of the Brazilian coast. Therefore, besides introducing relevant changes to the geographical pattern of the genus *Siderastrea*, a group widely represented in shallow-water reef systems and coral communities, the occurrence of the Caribbean *S. siderea* in western South Atlantic provides further and reliable taxonomical criteria to assess intra- and interpopulational morphological variation of the endemic *S. stellata*.

Hartt's specimens deposited in the collections of the National Museum of Natural History (NMNH) were examined under a Wild M8® stereo microscope fitted with an ocular micrometer. A single small colony (USNM 10948) collected offshore northern Bahia state (12°48'00" S, 38°0'00" W), approximately 17 km from the coast, was identified as *S. siderea* (Figure 1). The analyses of corallite structures were primarily based on Foster (1979; 1980) and Budd and Guzmán (1994). For a consistent pattern of septal number and arrangement, only completely developed corallites were examined. For comparison purposes the following Atlantic specimens were also examined (*= species name redesignated/determined after analyses): *S. siderea* – USNM 36919 (Curaçao, 'Albatross'),

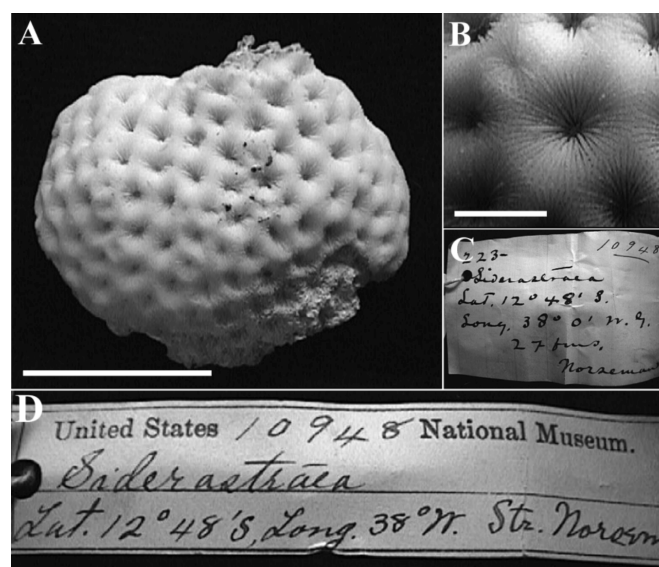


FIGURE 1. A) USNM 10948, specimen from Hartt's collection attributed to *S. siderea*. B) Detail of a completely developed corallite. C and D) Original labels found attached to the colony. Scale bars: A = 2 cm, B = 3 mm.

USNM 047607 (Belize), USNM 047611 (Belize), USNM 84238* (= *S. radians*, Brazil, 'Hartt Expedition'), USNM 90250 (Venezuela), USNM 93957 (San Blas Archipelago, Panama); *S. radians* - USNM 047605 (Belize), USNM 047610 (Belize), USNM 78220 (I. Ascension), USNM 78221 (I. Ascension), USNM 74961 (Belize), USNM 96369 (I. Ascension), USNM 96978 (I. Ascension), USNM 294338 (I. Ascension); *S. stellata* - USNM 83831* (= *S. radians*, Brazil, 'Hartt Expedition'), USNM 83832* (= *S. radians*, Jamaica), USNM 83833* (= *S. radians*, Brazil, 'Hartt Expedition'); *Siderastrea* sp. - USNM 10891* (= *S. radians*, Brazil, 'Hartt-Expedition'), USNM 10903* (= *S. radians*, Brazil, 'Hartt Expedition'), USNM 10932* (= *S. radians*, Brazil, 'Hartt Expedition'), USNM 10934* (= *S. radians*, Brazil, 'Hartt Expedition'), USNM 10937* (= *S. radians*, Brazil, 'Hartt Expedition'), USNM 10944* (= *S. stellata*, Brazil, 'Hartt Expedition'), USNM 10947* (= *S. radians*, Brazil, 'Hartt Expedition'), USNM 10978* (= *S. radians*, Brazil, 'Hartt Expedition'), USNM 10979* (= *S. stellata*, Brazil, 'Hartt Expedition'), USNM 10938* (= *S. radians*, Brazil, 'Hartt Expedition'), USNM 11003* (= *S. siderea*, West Indies, 'Albatross'), USNM 36872* (= *S. radians*, Bahamas, 'Albatross'), USNM 54232* (= *S. siderea*, Florida), USNM 83834* (= *S. radians*, Cape Verde), USNM 90174* (= *S. radians*, Bahamas, 'Anton Dohrn'), USNM 90175* (= *S. siderea*, Bahamas, 'Anton Dohrn'), USNM 90225* (= *S. siderea*, Florida), USNM 90249* (= *S. radians*, Venezuela), USNM 90254* (= *S. radians*, Cape Verde).

Acronym= United States National Museum/National Museum of Natural History

Family SIDERASTREIDAE Vaughan and Wells 1943

Astreidae. (*pars*) Milne Edwards and Haime (1949: 95);

(*pars*) Milne Edwards and Haime (1850: 23)

Plesiofungidae. (*pars*) Gregory (1895: 277); (*pars*) Quelch (1886: 113)

Fungidae. (*pars*) Vaughan (1900: 154); (*pars*) Vaughan (1923: 175); (as Fungiidae, *pars*) Crossland (1948: 193)

Agaricidae. (*pars*) Gravier (1909: 17); (*pars*) Thiel (1928: 274); (as Agariciidae, n. sp.) Vaughan (1919: 425); (as Agariciidae, n. sp.) Wells (1933: 105)

Siderastreidae. (diag) Vaughan and Wells (1943: 125); (diag) Veron and Pichon (1979: 85)

Genus *Siderastrea* de Blainville 1830

Madrepora. (*pars*) Pallas (1766: 322)

Astrea. (*pars*) Lamarck (1801: 371); (as *Astraea*, *nom nud*) Milne Edwards (1857: 505); (as *Astraea*, *nom nud*) Gregory (1895: 278)

Siderastrea. (*pars*, diag) de Blainville (1830: 335); (diag) Milne Edwards and Haime (1949: 138); (diag) Milne Edwards and Haime (1850: 41); (diag) Vaughan (1919: 435); (diag) Sheppard and Sheppard (1991: 75)

Siderina. (*nom nud*) Dana (1846: 218)

Type-species: *Madrepora radians* Pallas, 1766

Siderastrea siderea (Ellis and Solander 1786)

Madrepora siderea. (diag) Ellis and Solander (1786: 168, pl 49, figs 1,2)

Astrea siderea. (n gen) Lamarck (1816: 267 - ed 2, p 417); (diag.) Milne Edwards (1857: 509, pl D7, fig 2)

Siderastrea siderea. (n gen, diag) de Blainville (1830:

335); (diag) Milne Edwards and Haime (1849: 141); (diag) Vaughan (1901: 309, pl 14, figs 1, 2, pl 16, fig 1); (biol) Duerden (1902: 588, pl 22-24, figs 150-160); (diag) Vaughan (1919: 443, pl 114, figs 2, 3, pl 122, figs 1, 2, 2a, 2b, 3, 3a); (diag) Squires (1958: 249, pl 35 fig 2, pl 36, fig 1); (diag) Budd and Guzmán (1994: 594, fig 4a); (as *Siderastraea siderea*, diag) Verrill (1901: 151, pl 30, fig 2,3)

Astrea trichophylla. (*syn*) Ehrenberg (1834: 95)

Pavonia siderea. (*syn*) Dana (1846: 331)

Siderastraea grandis. (*syn*) Duncan (1863: 441, pl 16, fig 5a,5b)

DESCRIPTION. The specimen examined is a small dry skeleton (4.0 x 3.0 cm) with a massive growth form development, encrusting base and distinct oval surface. Corallites cerioid (3.5 – 4.0 mm in diameter) with hexagonal appearance, each containing a deep columellar fossa (approximately 2.0 mm, from calicular edge to columella), theca prominent, numerous septa regularly distributed in four, sometimes five cycles, and an apparent double wall. The diagrams of Figure 2 represent the pattern of septal arrangement in four distinct corallites. Septal disposition follows hexameral symmetry, with a conspicuous fourth cycle (S4) ranging from 16 – 24 septa, and an incomplete fifth cycle (S5) with fewer elements. The presence of S5 is likely to occur independently of the full development of the fourth cycle (see Figure 2B). Septa are thin (S1 = 0.1 mm in width and 2.0 mm in length), crowded, bear dentate margins, and small spine-like prominences along lateral faces. The primary septa may develop 10 – 13 dentations, and the distal tooth often projects towards the solid columella fusing at its base, and contributing to its papillose aspect – columella usually has a central robust prominence which is surrounded by 3 or 6 smaller papillae derived from marginal teeth. Septal dentations are elongate, with finely serrate or eventually sharp top, and lateral cuspid-like projections; they are uniform in size (0.1 mm in width and 0.1 – 0.2 mm in height), and are distributed at regular intervals (distance between the teeth = 0.04 mm). The columella is small (0.8 mm in diameter, approximately), oval or relatively elongate. Synapticulae are arranged in four conspicuous rings (length of synapticulae at third ring = 0.07 mm, and distance between rings of synapticulae = 0.1 mm). The radial elements do not form a prominent septo-costa, although some contact is observed at the edges of neighboring marginal corallites, when the costae cross continuously the peritheca. Septa curving soft and gradually on theca, while descend vertically towards the columella. Fusion occurs between S2 – S3, S3 – S4, and S4 – S5, following a typical siderastroid pattern. Septa size: S1 ≥ S2 > S3 > S4 > S5. New corallites are produced exclusively by extratentacular budding.

REMARKS. Diagnostic morphological skeletal traits to distinguish Atlantic siderastroids (information based on specimens analyzed at the NMNH and additional references) are provided in Table 1. Figure 3 shows the basic septal pattern of the three Atlantic species. Contrasting with *S. radians* and *S. stellata*, *S. siderea* does not undergo intratentacular budding. Consequently, among the Atlantic *Siderastrea* species, it has no tendency to develop meandroid corallites. Laborel (1974) suggested

an influence of the environment on the meandriform development of *Favia gravida* Verrill, 1868, but disregarded the effect of budding on corallite morphology. Despite the environmental gradient, the quite perfect polygonal corallites of *S. siderea* indicate extratentacular budding. Another peculiar characteristic of *S. siderea* is determined by its mode of sexual reproduction. The gonochoric *S. radians* and *S. stellata* are known to brood their embryos (Duerden 1904; Neves and da Silveira 2003), whereas the hermaphroditic *S. siderea* has been reported to shed gametes for external fertilization (Szmant 1986).

DISTRIBUTION. To the northern tropical Atlantic, Laborel (1974) suggested that *S. siderea* was endemic to the Caribbean region, while *S. radians* could be the dominant species to the west African coast (e.g. Cape Verde I.), being doubtful the status of the colonies with wide calices and numerous septa from the Gulf of Guinea (Figure 4). Although the identification is refuted by one of us (M. Pichon), Boshoff (1981) reported the presence of *S. siderea* in Mozambique (Inhaca Is.), West Indian Ocean, suggesting a wider distributional pattern. As its congener *S. radians*, *S. siderea* is found throughout the Caribbean Sea where it has been recorded in Jamaica (Goreau and Wells 1967), Puerto Rico (Almy Jr. and Carrión-Torres 1963), Lesser Antilles, in Curaçao (Debrot et al. 1998), St. Lucia (Fenner 1998), Barbados (Lewis 1997) and Trinidad (Kenny 1988), Venezuela, in the Gulf of Cariaco (Antonius 1980), Belize (Cairns 1982; Macintyre and Aronson 1997), Swan Is. (Tortora and Keith 1980), Costa Rica (Cortés 1997) and Panamá (Holst and Guzmán 1993; Clifton et al. 1996). Its range of occurrence also extends to the Gulf of Mexico, at East Flower Garden Banks (Bright et al. 1984) and northwards at Trysler Grounds/Big Rock (Schroeder and Hopkins 1997), Florida (Muthiga and Szmant 1987), and Bahamas, in the Turks and Caicos Is. (Chiappone et al. 1996). To the region of Abrolhos Archipelago (Southern Bahia state, Brazil), Laborel (1974) has specially pointed out to the variability of the endemic *S. stellata* with *radians*- and *siderea*-looking forms, but has not formally confirmed any of the Caribbean siderastreids to western South Atlantic.

The genus *Siderastrea* is represented by five nominal species: *S. radians* (Pallas, 1766); *S. siderea* (Ellis and Solander, 1786); *S. stellata* Verrill, 1868; *S. savignyana* Milne Edwards and Haime, 1850; and *S. glynni* Budd and Guzmán, 1994, all of them colonial and zooxanthellate (Budd and Guzmán 1994). The Atlantic *Siderastrea* complex includes the three former species, and the group has long puzzled taxonomists due to intraspecific morphological variability and interspecific overlapping of taxonomic characters. Hence, their specific status has been a constant subject of discussion and misunderstandings. For example, Yonge (1935) and Werner (unpublished data) referred to *S. stellata* as synonym of *S. radians*, while Laborel (1967) suggested *S. siderea* as an ecomorph of *S. radians*, and *S. stellata* as an archaic intermediary species. Similarly, Zlatarski and Estalella (1982) mentioned two forms of *S. radians* in Cuba but synonymized *S. siderea* as *S. radians*. However, as emphasized by Vaughan (1919), despite the similarities between the three Atlantic siderastreids, *S. stellata* is a very distinct species from both *S. siderea* and *S. radians*, which further differ from each other in a series of diagnostic characteristics, including depth of columellar fossa and structure of columella. Moreover, Budd (personal communication) pointed out that *S. radians* tends to develop into ‘roller’ forms, or spheroid unattached colonies, while *S. stellata* commonly shows a high incidence of meandroid or elliptical corallites. Another important divergence is related to the number and arrangement of septa. *S. radians* forms three complete cycles, and hardly presents elements of a fourth cycle (Verrill 1901; Vaughan 1919). On the other hand, *S. siderea* and *S. stellata* usually show a complete fourth cycle, and a

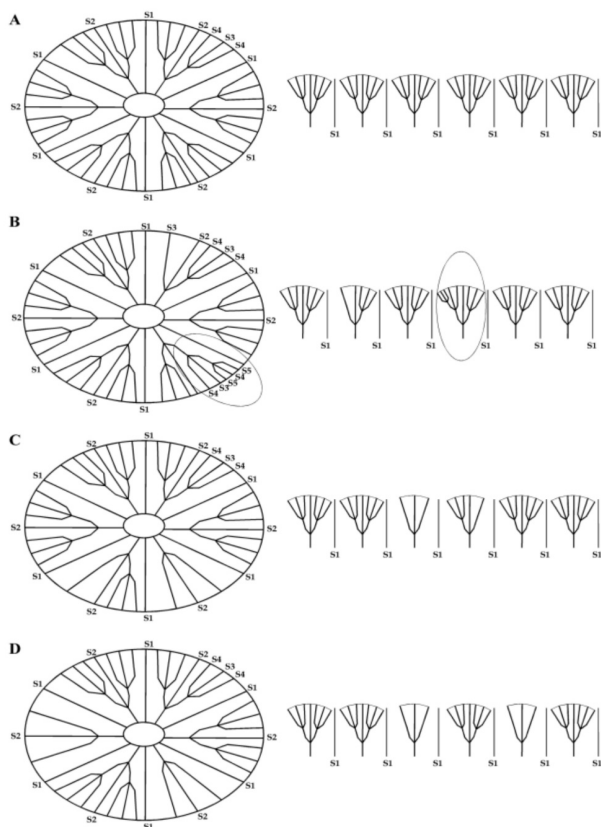


FIGURE 2. Diagrams of septa arrangement of four distinct corallites of the specimen analysed. A) Corallite with complete fourth cycle. B) Corallite with incomplete fourth and fifth cycles. Encircled, a sequence including S5 elements. C and D) Corallites with incomplete fourth cycle.

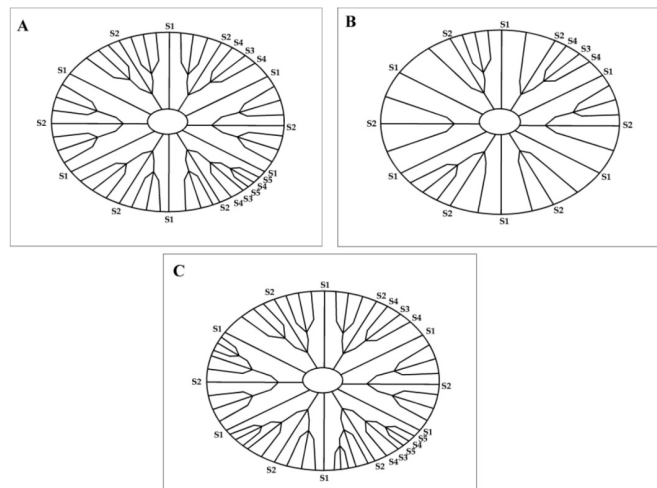


FIGURE 3. Basic septal pattern of Atlantic siderastreids. A) *S. stellata*. B) *S. radians*. C) *S. siderea*.

few elements of the fifth (Verrill 1901; Leão 1986).

Colonies of *S. siderea* are known to occur at highly variable depth and have been reported in waters deeper and cooler than the other two species (Bright *et al.* 1984; Schroeder and Hopkins 1997). The Amazon estuary is an important and effective barrier to Caribbean species, also inhibiting coral reef formation (Laborel 1967; Palacio 1982; Maida and Ferreira 1997). However, several planktonic forms, including larval stages, are known to flow through extensive areas of sediment and freshwater input (Scheltema 1986; Morgan 1995), corroborating the hypothesis that *S. siderea* seems to be resistant to turbulent

and turbid environments (Jiménez and Cortés 1993). *Siderastrea siderea* is a broadcast-spawning species, and external fertilization is expected to enhance long-distance dispersal, promoting connection among populations (Jackson 1986). Also contributing to a high dispersal potential, free-swimming larvae have been predicted to delay metamorphosis until environmental cues indicate suitable habitats (Burke 1983). During their competency period, scleractinian larvae depend upon cilia for natatorial movement, but swimming speeds are extremely low (Harrison and Wallace 1990; Shanks 1995). As a result, the duration of the planktonic stage probably plays an

TABLE 1. Morphological characters of all Atlantic siderastreids. Modified from Budd and Guzmán (1994) and Werner (unpublished data), with additional information from: Milne Edwards and Haime (1849), Milne Edwards (1857), Verrill (1868, 1901), Vaughan (1919), Yonge (1935), Almy Jr. and Carrión-Torres (1963), Laborel (1969/70), Foster (1979, 1980), Debrot *et al.* (1998), and Neves (thesis, unpublished data). In parenthesis: maximum diameter of corallites, and minimum and maximum number of septa and synapticalae eventually observed. * Between pentagonal and hexagonal, often with an irregular development

CHARACTERS/SPECIES	<i>S. stellata</i>	<i>S. radians</i>	<i>S. siderea</i>
COLONY FORM	Rounded massive, or irregular encrusting	'Roller' form when unattached, irregular domes or encrusting	Dense skeleton, usually rounded massive, encrusting when young
CORALLITE DEVELOPMENT	Ceriod to subceriod, pentagonal or hexagonal, feebly round, sometimes meandroid	Ceriod, subhexagonal*, marginal corallites eventually elongate	Ceriod, pentagonal or hexagonal, feebly round, no tendency to meandriform development
CALICE DIAMETER	2-5 (6) mm	2-3 (4) mm	3-5 (6) mm
SEPTA NUMBER PER CORALLITE	36 (34)-56 (58)	24-44 (46)	40-58 (64)
SEPTA ARRANGEMENT	Hexamer plan, 3 complete cycles, 4th cycle complete or incomplete, 5th cycle incomplete or absent, 6th cycle rare	Hexamer plan, 3 complete cycles, 4th cycle always incomplete or absent, 5th cycle rare, 6th cycle absent	Hexamer plan, 3 complete cycles, 4th cycle rarely incomplete, 5th cycle incomplete or absent, 6th cycle rare
SEPTA THICKNESS AND SLOPE	Thinner than <i>S. radians</i> , relatively regular in width and thickness, closely spaced, slope vertical towards the columella, sometimes horizontal at marginal corallites	Unequal in width and thickness, larger and shorter than <i>S. stellata</i> , irregularly spaced, perpendicular to wall, descend vertically towards the columella	Slim, crowded, longer than <i>S. stellata</i> and <i>S. radians</i> , septa of the last cycle thinner, subacute at calice margin, slope vertical towards the columella
COLUMELLA STRUCTURE	Papillose, sometimes feebly trabecular, oval or elongate, with 1-7 ornamented papillae	Larger than <i>S. stellata</i> , solid, smooth or with 1-3 fused papillae, occasionally fusion is reduced and about 5 short, flattened papillae are observed	Small, solid, usually oval with 1 central pit or 3-6 smooth, or feebly ornamented papillae
COLUMELLAR FOSSA	Usually narrow, shallow, 1-2 mm depth	Wider than <i>S. stellata</i> , shallow, < 2 mm depth	Narrow, deep, 2-3 mm depth
SYNAPTICALAE	2(3)-4(5) irregular synaptical rings	2-4 irregular synaptical rings	4(3)-5(6) regular synaptical rings



FIGURE 4. Map of distribution of *S. siderea* and *S. stellata*. Arrow is indicating the occurrence of *S. siderea* in Brazil. Following Laborel (1974) and Pichon (pers. comm.) the identification of *S. siderea* to Gulf of Guinea and Mozambique remains controversial.

important role in dispersion and settlement patterns, the ocean currents being largely responsible for determining the distributional ranges of coral species (Veron 2000). Despite any contradictory generalization, the correlation among these events provides alternative explanations for a possible long-term transport of eurythermic and sediment-resistant Caribbean coral larvae to the South Atlantic.

Reinsuring great relevance of institutional scientific collections for taxonomy and knowledge of biodiversity, the occurrence of Caribbean siderastreids along the Brazilian coast is supported by the testimony of Hartt's specimen of *S. siderea*. Given the necessity for meticulous examination of skeletal traits to differentiate *S. siderea* and *S. stellata*, it is clear that field identification will always remain speculative. Besides a detailed analysis of septal patterns, which should constitute the basis for *Siderastrea* species separation, additional information on reproductive biology and ecological constraints strengthen the robustness of the decision.

Finally, beyond establishing the occurrence of *S. siderea* in Brazil, our study suggests that this species should have been previously misidentified with morphs of the endemic *S. stellata*, which was so far thought to be the only *Siderastrea* species to be found in Brazil. Considering the historical and ecological context, further investigations, including broader collections and field analyses are expected to define the geographic distribution and habitat preferences of *S. siderea* along the Brazilian coast, possibly improving our knowledge on coral dispersal strategies along western South Atlantic.

ACKNOWLEDGMENTS: This work was partially developed during a short-term visitor program at the Smithsonian Institution, Washington D.C., granted to E. Neves. We are indebted to Dr. Stephen Cairns (National Museum of Natural History, Smithsonian Institution) who kindly provided logistical support, valuable comments and a thorough revision of the article. We much would like to thank Dr. Marcelo Kitahara (School of Pharmacy and Molecular Sciences, James Cook University) for suggestions and corrections that contributed to the final refinement of the manuscript. As part of E.G. Neves doctoral project, this study was supported by Conselho Nacional de Desenvolvimento Científico e Tecnológico (CNPq, no. 140170/2000-6) with scholarship by "Pós-Graduação, Área Zoologia, IB-USP", and the CAPES/PROAP/ Instituto de Biociências (USP)/2002. Funds were also provided by the Office of Fellowships and Grants of the Smithsonian Institution.

LITERATURE CITED

- Almy Jr., C. and C. Carrión-Torres. 1963. Shallow-water stony corals of Puerto Rico. *Caribbean Journal of Science* 3(2-3):133-163.
- Antonius, A. 1980. Occurrence and distribution of stony corals in the Gulf of Cariaco, Venezuela. *Hydrobiologia* 65(3): 321-338.
- Boshoff, P.H. 1981. An annotated checklist of Southern African Scleractinia. *Investigational Report of the Oceanographic Research Institute* 49: 1-45.
- Blainville, H.M. 1830. Zoophytes. *Dictionnaire des Sciences Naturelles, Paris* 60:310-358.
- Bright, T.J., J.P. Kraemer, G.A. Minnery and S.T. Viada. 1984. Hermatypes of the Flower Garden banks Northwestern Gulf of Mexico: a comparison to other Western Atlantic reefs. *Bulletin of Marine Science* 34: 461-476.
- Budd, A.F. and H.M. Guzmán. 1994. *Siderastrea glynni*, a new species of scleractinian coral (Cnidaria, Anthozoa) from the Eastern Pacific. *Proceedings of the Biological Society of Washington* 107(4): 591-599.
- Burke, R.D. 1983. The induction of metamorphosis of marine invertebrate larvae: stimulus and response. *Canadian Journal of Zoology* 61: 1701-1719.
- Chiappone, M., K.M. Sullivan and C. Lott. 1996. Hermatypic scleractinian corals of the Southeastern Bahamas: A comparison to western Atlantic reef systems. *Caribbean Journal of Science* 32(1): 1-13.
- Clifton, K.E., K. Kim and J.L. Wulf. 1997. A field guide to the reefs of Caribbean Panama with emphasis on Western San Blas. *Proceedings of the 8th International Coral Reef Symposium* 1: 167-184.
- Cortés, J. 1997. Biodiversidad marina de Costa Rica: Filo Cnidaria. *Revista de Biología Tropical* 44(3)/45(1): 323-334.
- Crossland, C. 1948. Reef corals of the south African coast. *Annals of the Natal Museum* 11(2): 169-205.
- Dana, J.D. 1846. *Zoophytes. United States Exploring Expedition 1838-1842. Vol. 7. Philadelphia: C. Sherman.* 740 p.
- Debrot, A.O., M.M.C.E. Kuenen, and K. Dekker. 1998. Recent declines in the coral fauna of the Spaanse Water, Curaçao, Netherlands Antilles. *Bulletin of Marine Science* 63(3): 571-580.
- Duerden, J.E. 1902. West Indian madreporarian polyps. *National Academy of Sciences* 8: 403-599.
- Duerden, J.E. 1904. *The coral Siderastrea radians and its postlarval development.* Washington: Carnegie Institution of Washington. 126 p.
- Duncan, P.M. 1863. On the fossil corals of the West Indian islands. *Quarterly Journal of the Geological Society of London* 19: 406-458.
- Ellis, J. and D. Solander. 1786. *The natural history of many curious and uncommon zoophytes collected from various parts of the globe. An arrangement of zoophytes.* London: Benjamin White and Son. 208 p.
- Ehrenberg, C.G. 1834. Beiträge zur physiologischen Kenntniss der Corallenthiere im allgemeinen und besonders des Rothen Meeres. *Kaiserliche Akademie der Wissenschaften Berlin*: 250-380.
- Fenner, D. 1998. Reef topography and coral diversity of Anse Galet Reef, St. Lucia. *Caribbean Marine Studies* 6: 19-26.
- Foster, A.B. 1979. Phenotypic plasticity in the reef corals *Montastrea annularis* (Ellis and Solander) and *Siderastrea siderea* (Ellis and Solander). *Journal of Experimental Marine Biology and Ecology* 39: 25-54.
- Foster, A.B. 1980. Environmental variation in morphology within the Caribbean reef corals *Montastrea annularis* and *Siderastrea siderea*. *Bulletin of Marine Science* 30: 678-709.
- Freitas, M.V. 2001. *Hartt: Expedições pelo Brasil Imperial 1865-1878.* São Paulo: Metalivros. 244 p.
- Goreau, T.F. and J.W. Wells. 1967. The shallow-water Scleractinia of Jamaica: revised list of species and their vertical distribution range. *Bulletin of Marine Science* 17(2): 442-453.
- Gravier, C. 1909. Madréporaires des îles San Thomé et du prince (Golfe de Guinée). *Annales de l'Institut Océanographique* 1(2): 1-28.
- Gregory, J.W. 1895. Contributions to the paleontology and physical geology of the West Indies. *Quarterly Journal of Geological Society* 51(203): 255-328.
- Harrison, P.L. and C.C. Wallace. 1990. Reproduction, dispersal and recruitment of scleractinian corals; p. 133-208 *In Z. Dubinsky (ed.). Ecosystems of the World: Coral Reefs.* Amsterdam: Elsevier.
- Holst, I. and H.M. Guzmán. 1993. Lista de corales hermatípicos (Anthozoa, Scleractinia, Hydrozoa: Milleporina) a ambos lados del Istmo de Panamá. *Revista de Biología Tropical* 41(3):871-875.
- Jackson, J.B.C. 1986. Modes of dispersal of clonal benthic invertebrates: consequences for species distributions and genetic structure of local populations. *Bulletin of Marine Science* 39(2): 588-606.
- Jiménez, C. and J. Cortés. 1993. Density and compressive strength of the coral *Siderastrea siderea* (Scleractinia: Siderastreidae): intraspecific variability. *Revista de Biología Tropical* 41(1): 39-43.
- Kenny, T.S. 1988. Hermatypic scleractinian corals of Trinidad; p. 83-100 *In L. J. Van Der Steen (ed.). Studies in Honour of Dr. Pieter Hummelinck. Foundation for Research in Surinam and the Netherlands Antilles* 123.
- Laborel, J. 1967. *Les peuplements de Madréporaires des côtes tropicales du Brésil.* Faculté des Sciences de l'Université d'Aix-Marseille, part I. 162 p.
- Laborel, J. 1969/70. Madréporaires et hydrocoralliaires récifaux des côtes brésiliennes. Systématique, écologie, répartition verticale et géographique. *Annales de l'Institut Océanographique* 47: 15-229.
- Laborel, J. 1974. West African reef corals, an hypothesis on their origin. *Proceedings of the 2nd International Coral Reef Symposium* 1: 425-443.
- Lamarck, J.B.P. 1801. *Système des animaux sans vertèbres.* Paris. 432 p.
- Lamarck, J.B.P. 1816. *Historie des animaux sans vertèbres.* Paris, 2. 568 p.
- Leão, Z.M.A.N. 1986. *Guia para identificação dos corais do Brasil.* Salvador: Universidade Federal da Bahia, PPPG/UFBA. 57 p.
- Lewis, J.B. 1997. Abundance, distribution and partial mortality of the massive coral *Siderastrea siderea* on degrading coral reefs at Barbados, West Indies. *Marine Pollution Bulletin* 34(8):622-627.
- Maida, M. and B.P. Ferreira. 1997. Coral reefs of Brazil: an overview. *Proceedings of the 8th International Coral Reef Symposium* 1: 263-274.
- Macintyre, I.G. and R.B. Aronson. 1997. Field guidebook to the reefs of Belize. *Proceedings of the 8th International Coral Reef Symposium* 1: 203-222.

- Milne Edwards, H. 1857. *Histoire naturelle des Coralliaires ou polypes proprement dits*. Paris: Librairie Encyclopédique de Roret, II. 505-513.
- Milne Edwards, H. and J. Haime. 1849. Recherches sur les polypiers. *Annales de Sciences Naturelles, Zoologie*, 12: 95-197.
- Milne Edwards, H. and J. Haime. 1850. A monograph of the British fossil corals. *Palaeontographical Society of London* 3(7): 1-71.
- Morgan, S.G. 1995. Life and death in the plankton: larval mortality and adaptation; p. 279-321 In L. McEdward (ed.). *Ecology of Marine Invertebrate Larvae*. Florida: CRC Press.
- Muthiga, N.A. and A.M. Szmant. 1987. The effects of salinity stress on the rates of aerobic respiration and photosynthesis in the hermatypic coral *Siderastrea siderea*. *Biological Bulletin* 173: 539-551.
- Neves, E.G. and F.L. da Silveira. 2003. Release of planula larvae, settlement and development of *Siderastrea stellata* Verrill, 1868 (Anthozoa, Scleractinia) *Hydrobiologia* 501: 139-147.
- Neves, E.G., S.C.S. Andrade, F.L. da Silveira and V.N. Solferini. 2008. Genetic variation and population structuring in two brooding coral species (*Siderastrea stellata* and *Siderastrea radians*) from Brazil. *Genetica* 132: 243-254.
- Palacio, F.J. 1982. Revisión zoogeográfica marina del sur del Brasil. *Boletim do Instituto Oceanográfico* 31(1): 69-92.
- Pallas, P.S. 1766. *Elenchus Zoophytorum*. Hagea-Comitum: Varrentrapp F. 451 p.
- Quelch, J.J. 1886. Report on the reef-corals collected by H.M.S Challenger during the years 1873-76. *Challenger Reports, Zoology*, 16: 1-203.
- Scheltema, R. 1986. On dispersal of planktonic larvae of benthic invertebrates: an eclectic overview and summary of problems. *Bulletin of Marine Science* 39(2): 290-322.
- Shanks, A.L. 1995. Mechanisms of cross-shelf dispersal of larval invertebrates and fish; p. 323-367 In L. McEdward, (ed.). *Ecology of Marine Invertebrate Larvae*. Florida: CRC Press.
- Sheppard, C.R.C. and A.L.S. Sheppard. 1991. Corals and coral communities of Arabia. *Fauna of Saudi Arabia* 12: 1-170.
- Schroeder, W.W. and T. Hopkins. 1997. Northern record for the zooxanthellate scleractinian coral *Siderastrea siderea* (Ellis and Solander) from the Gulf of Mexico. *Gulf Research Report* 9(4): 361-364.
- Soong, K. and J.C. Lang. 1992. Reproductive integration in reef corals. *Biological Bulletin* 183: 418-431.
- Squires, D.F. 1958. Stony corals from the vicinity of Bimini, Bahamas, British West Indies. *Bulletin of American Museum of Natural History* 115: 215-262.
- Szmant, A.M. 1986. Reproductive ecology of Caribbean reef corals. *Coral Reefs* 5: 43-53.
- Thiel, M.E. 1928. Beiträge zur Kenntniss der Meeresfauna Westafrikas, Madrepোরaria. *Hamburg* 3: 253-350.
- Tortora, L.R. AND D.E. Keith. 1980. Scleractinian corals of the Swan Islands, Honduras. *Caribbean Journal of Science* 16(1-4): 65-72.
- Vaughan, T.W. 1900. Eocene and lower Oligocene coral faunas of the United States with a few doubtfully Cretaceous species. *United States of Geological Survey* 39: 1-263.
- Vaughan, T.W. 1901. The stony corals of the Porto Rico waters. *Bulletin of the United States Fish Commission for 1900* 20: 289-320.
- Vaughan, T.W. 1919. Fossil corals from Central America, Cuba, and Porto Rico, with an account of the American Tertiary, Pleistocene, and recent coral reefs. *Bulletin of the Smithsonian Institution* 103: 189-524.
- Vaughan, T.W. 1923. Fauna of the Sooke formation Vancouver Island. *Bulletin of the Department of Geological Science* 14(5): 123-234.
- Vaughan, T.W. and J.W. Wells. 1943. Revision of the suborder families and genera of the Scleractinia. *Special Papers of Geological Society of America* 44: 1-363.
- Veron, J.E.N. 2000. *Corals of the World*. Volume 3. Townsville: Australian Institute of Marine Science and CRR Qld Pty Ltd. 490 p.
- Veron, J.E.N. and M. Pichon. 1979. Scleractinia of Eastern Australia. Part III. Families Agariciidae, Siderastreidae, Fungiidae, Oculinidae, Merulinidae, Mussidae, Pectiniidae, Caryophylliidae, Dendrophylliidae. *Australian Institute of Marine Science Monograph Series* 4: 1-443.
- Verrill, A.E. 1868. Notice of the corals and echinoderms collected by Prof. C.F. Hartt, at the Abrolhos Reefs, province of Bahia, Brazil, 1867. *Transactions of Connecticut Academy of Arts and Science* 1(2): 351-371.
- Verrill, A.E. 1901. Variations and nomenclature of Bermudian, West Indian, and Brazilian reef corals, with notes on various Indo-Pacific corals. *Transactions of Connecticut Academy of Arts and Science* 11: 63-168.
- Zlatarski, V.N. and N.M. Estalella. 1982. *Les scléactiniaires de Cuba avec des données sur les organismes associés*. Sofia: Académie des Sciences de Cuba, Inst. d'Océanologie and Editions de l'Académie bulgare des Sciences. 472 p.
- Wells, J.W. 1933. Corals of the Cretaceous of the Atlantic and Gulf Coastal plains and Western interior of the United States. *Bulletin of American Paleontology* 18(67): 85-292.
- Yonge, C.M. 1935. Studies on biology of Tortugas corals. II. Variation in the genus *Siderastrea*. *Publications of the Carnegie Institute of Washington* 452: 201-208.

RECEIVED: June 2010

REVISED: August 2010

ACCEPTED: August 2010

PUBLISHED ONLINE: October 2010

EDITORIAL RESPONSIBILITY: Luis Ernesto Arruda Bezerra