

# Anura, Hylidae, *Dendropsophus nahdereri* (Lutz and Bokermann, 1963): Distribution extension and new state record

Patrick Colombo<sup>1\*</sup>, Caroline Zank<sup>2</sup>, Daniel Bühler<sup>2</sup>, Martin Schossler<sup>2</sup>, Rafael Lucchesi Balestrin<sup>2</sup>, Raquel Rocha Santos<sup>1</sup>, Simone Baratto Leonardi<sup>2</sup>, Márcio Borges-Martins<sup>2</sup> and Laura Verrastro<sup>2</sup>

1 Pontifícia Universidade Católica do Rio Grande do Sul, Faculdade de Biociências, Laboratório de Sistemática de Vertebrados, Setor de Herpetologia. Avenida Ipiranga 6681. CEP 90619-900. Porto Alegre, RS, Brazil.

2 Universidade Federal do Rio Grande do Sul, Instituto de Biociências, Departamento de Zoologia, Laboratório de Herpetologia. Avenida Bento Gonçalves 9500. CEP 91540-000. Porto Alegre, RS, Brazil.

\* Corresponding author. E-mail: [cinolebia@hotmail.com](mailto:cinolebia@hotmail.com)

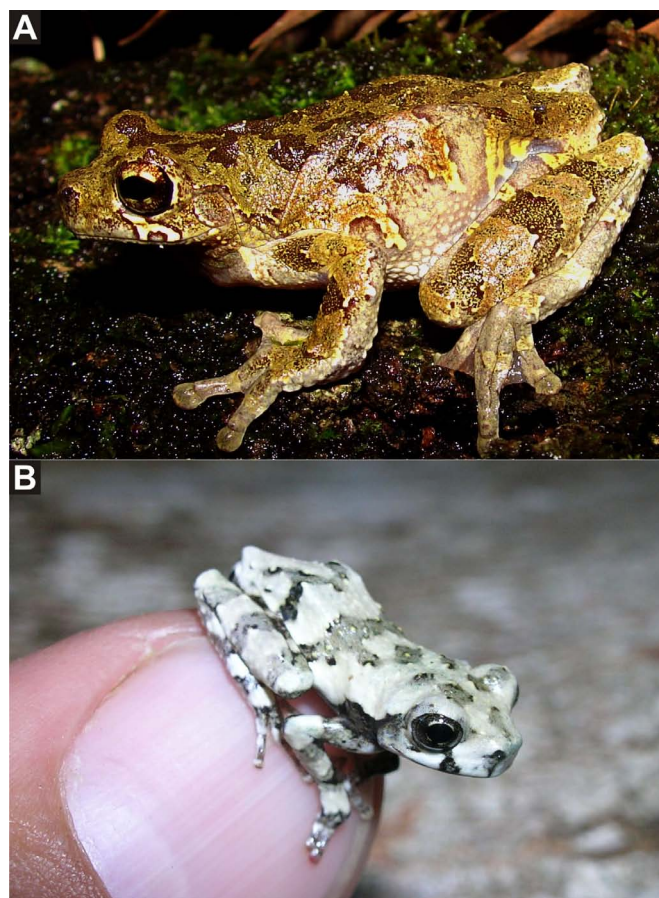
**ABSTRACT:** *Dendropsophus nahdereri* is included in the *Dendropsophus marmoratus* group. Its distribution is known from the Brazilian states of Paraná and Santa Catarina. Here we report new records of this species and briefly describe the habitat of calling males. We found new localities of occurrence of *D. nahdereri* in Brazilian states of Santa Catarina and Rio Grande do Sul. We collected calling males in temporary lentic water bodies surrounded by arboreal vegetation, inside and on the border of native forest, and inside *Pinus* plantations near native forest.

*Dendropsophus nahdereri* (Lutz and Bokermann, 1963) (Figure 1) is a treefrog included in the *Dendropsophus marmoratus* group and is one of the largest species in the genus (Lutz and Bokermann 1963; Faivovich *et al.* 2005). Its distribution is known from some localities in the Brazilian states of Paraná and Santa Catarina along the Atlantic forests in the southern Brazil, in altitudes ranging from 100 to 950 m (Lutz and Bokermann 1963; Ghizoni-Jr *et al.* 2000; Machado and Conte 2001; Gutsche *et al.* 2007; Haddad *et al.* 2008; Orrico *et al.* 2009; Conte *et al.* 2010) (Figure 2). Colombo and Zank (2008) mentioned the occurrence of *D. nahdereri* in Rio Grande do Sul based only on vocalization activity and did not provide vouchers or report specific localities. Here we report, based on collected material, new records that expand the distribution for this species and briefly describe the habitat of calling males in these new localities. Voucher specimens are housed in Coleção Herpetológica, Departamento de Zoologia, Universidade Federal do Rio Grande do Sul (UFRGS).

In recent field expeditions to the state boundaries of Rio Grande do Sul and Santa Catarina, Brazil, along the Pelotas River, we found three new localities of occurrence of *Dendropsophus nahdereri*. Specimens of *D. nahdereri* were found in one locality in municipality of Bom Jesus, Rio Grande do Sul, Brazil (UFRGS 3308-3310, three adult males, 29 September 2008, 28°18'22" S, 50°42'37" W), and two localities in municipality of Campo Belo do Sul, Florestal Gateados, Santa Catarina, Brazil (UFRGS 2578-2579, two adult males, 27 June 2006; UFRGS 3074, UFRGS 3134, UFRGS 3209, three juveniles, 29 February 2008, 28°02'01" S, 50°51'10" W; no voucher, 27°59'32" S, 50°53'48" W) (Figure 2).

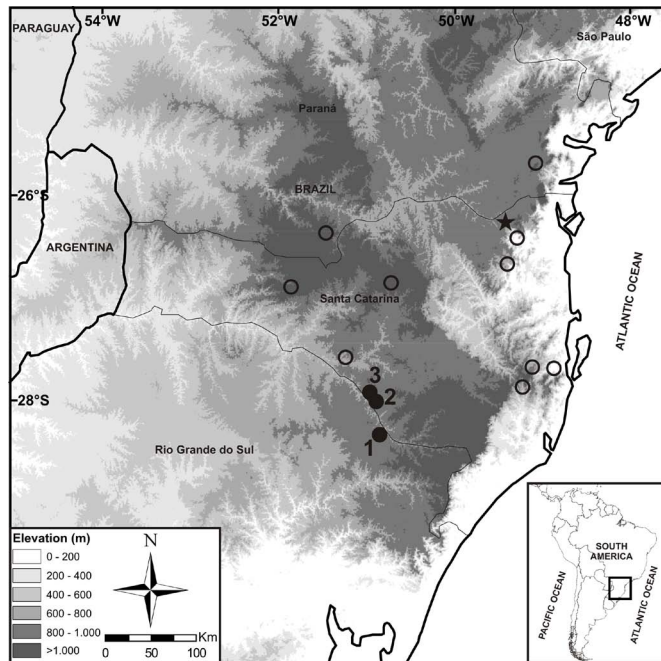
We collected five calling males of *Dendropsophus nahdereri* in temporary lentic water bodies surrounded by arboreal vegetation inside native forest (Figure 3) at night. We observed other males calling in temporary water

bodies on the border of forest (in remnants or continuous forest), and inside *Pinus* plantations near native forest. We



**FIGURE 1.** A) Adult male of *Dendropsophus nahdereri* (snout-vent length – 47,5 mm, UFRGS 3308) from municipality of Bom Jesus, Rio Grande do Sul state, Brazil (28°18'22" S, 50°42'37" W); B) juvenile of *D. nahdereri* (snout-vent length – 27,3 mm, UFRGS 3134) from municipality of Campo Belo do Sul, Florestal Gateados, Santa Catarina state, Brazil (28°02'01" S, 50°51'10" W). Photos: Rafael L. Balestrin (A) and Patrick Colombo (B).

also collected three juveniles of *D. nahdereri* (Figure 1B) (identified by the color pattern of thigh and the shape of snout) in 29 February 2008 (locality 2, Figure 2). One of these individuals was on shrubs and two of them moving in the leaf litter inside native forest.



**FIGURE 2.** Known distribution and new records of *Dendropsophus nahdereri*. Star: type locality, municipality of São Bento do Sul, Santa Catarina state, Brazil. Open circles: published records of *D. nahdereri* (References, including type locality, are given in the text and Appendix 1). Solid circles: new records of *D. nahdereri*: 1 - municipality of Bom Jesus, Rio Grande do Sul state, Brazil (28°18'22" S, 50°42'37" W), 2 and 3 - municipality of Campo Belo do Sul, Florestal Gateados, Santa Catarina state, Brazil (28°02'01" S, 50°51'10" W and 27°59'32" S, 50°53'48" W, respectively).

This report represents the first record of *Dendropsophus nahdereri* for the state of Rio Grande do Sul, raising to 104 the number of anuran species known to the state (Braun and Braun 1980, 1981; Braun *et al.* 1981; Garcia and Vinciprova 1998; Kwet and Di Bernardo 1999; Canavero *et al.* 2001; Giasson 2001; Giasson and Cechin 2001; Kwet 2001; Tedros *et al.* 2001; Caramaschi and Cruz 2002; Di-Bernardo *et al.* 2006; Lingnau *et al.* 2006; Kwet *et al.* 2006; Colombo *et al.* 2007; Garcia *et al.* 2007; Zanella *et al.* 2007; Kwet 2008; Both *et al.* 2009; Iop *et al.* 2009).

Lutz and Bokermann (1963) observed *Dendropsophus nahdereri* in rain forest partly destroyed by man. Machado and Conte (2001) found this species in low vegetation bordering a lake near disturbed mixed temperate rain forest at night. Orrico *et al.* (2009) registered males of *D. nahdereri* calling hidden in emerging aquatic vegetation near the water level, on perches or branches around a pond and perched in shrubs at heights up to 1–5 meters. Conte *et al.* (2010) observed males calling inside forest in top of trees hidden in cracks and bromeliads at afternoon. At the dusk, these authors registered calling males in temporary water bodies in the edge or inside forest remnants, using branches or cracks of trees as perches, and eventually calling directly at the soil. As described by Conte and Rossa-Feres (2006) and Conte *et al.* (2010) we also registered some males of *D. nahdereri* calling occasionally during the day, not in epiphytic bromeliads as

observed by these authors, but in trees at approximately ten meters high, possibly hidden in cracks as Conte *et al.* (2010) found.

Conte and Rossa-Feres (2006) observed males of one population of *Dendropsophus nahdereri* in Paraná calling in the rainy and warm season (September to January). Orrico *et al.* (2009) registered calling males in the state of Santa Catarina in winter and spring (August, September and December), and Conte *et al.* (2010), in other localities in Paraná and Santa Catarina, registered males from August to November. We found males in southern Santa Catarina and Rio Grande do Sul calling mainly in spring (September, October and November), however we also observed males calling in autumn and winter (April, May, June and July).



**FIGURE 3.** Two different collection sites of *Dendropsophus nahdereri* in locality 2, Florestal Gateados, municipality of Campo Belo do Sul, Santa Catarina state, Brazil. Photos: Patrick Colombo.

**ACKNOWLEDGMENTS:** We sincerely thank Energética Barra Grande S/A (BAESA) for financial support, Florestal Gateados for logistic support and Rodrigo Lingnau and Victor G. D. Orrico for the corrections and suggestions on the manuscript and for valuable comments. We also thank Rodrigo Lingnau for confirming the identification of some specimens.

#### LITERATURE CITED

- Both, C., M. Solé, T.G. Santos and S.Z. Cechin. 2009. The role of spatial and temporal descriptors for Neotropical tadpole communities in southern Brazil. *Hydrobiologia* 624: 125-138.
- Braun, P.C. and C.A.S. Braun. 1981. Ocorrência de *Hyla pinima* Bokermann & Sazima, 1973, no Estado do Rio Grande do Sul, Brasil (Anura, Hylidae). *Iheringia, série Zoologia* 57: 113-118.
- Braun, P.C. and C.A.S. Braun. 1980. Lista prévia dos anfíbios do Rio Grande do Sul, Brasil. *Iheringia, série Zoologia* 56: 121-146.
- Braun, P.C., C.A.S. Braun and M.D.S. Pineda. 1981. Ocorrência de *Physalaemus nanus* (Boulenger, 1888) no Estado do Rio Grande do Sul, Brasil (Anura, Leptodactylidae). *Iheringia, série Zoologia* 57: 99-104.
- Canavero, A., D.E. Naya and R. Maneyro. 2001. *Leptodactylus furnarius* Sazima & Bokermann, 1978 (Anura: Leptodactylidae). *Novidades Zoogeográficas: Cuadernos de Herpetologia* 15(1): 89.
- Caramaschi, U. and C.A.G. Cruz. 2002. Taxonomic status of *Atelopus pachyrhynchus* Miranda-Ribeiro, 1920, redescription of *Melanophryniscus tumifrons* (Boulenger, 1905), and descriptions of two new species of *Melanophryniscus* from the state of Santa Catarina, Brazil (Amphibia, Anura, Bufonidae). *Arquivos do Museu Nacional* 60(4): 303-414.
- Colombo, P., C. Zank, L.E.C. Schmidt, G. Gonçalves and J.R. Marinho. 2007. Amphibia, Anura, Bufonidae, *Melanophryniscus simplex*: Distribution extension. *Check List* 3(4): 305-307.
- Colombo, P. and Zank, C. 2008. Anfíbios, p. 104-111 In G. Bond-Buckup (org.). Biodiversidade dos Campos de Cima da Serra. Porto Alegre: Libretos.
- Conte, C.E. and D.C. Rossa-Feres. 2006. Diversidade e ocorrência temporal da anurofauna (amphibia anura) em São José dos Pinhais, Paraná, Brasil. *Revista Brasileira de Zoologia* 23(1): 162-175.
- Conte, C.E., F. Nomura, R.A. Machado, A. Kwet, R. Lingnau and D.C. Rossa-Feres. 2010. Novos registros na distribuição geográfica de anuros na Floresta com Araucária e considerações sobre suas vocalizações. *Biota Neotropica* 10(2): 201-224.

- Di-Bernardo, M., R. Maneyro and H. Grillo. 2006. New Species of *Melanophryniscus* (Anura: Bufonidae) from Rio Grande do Sul, Southern Brazil. *Journal of Herpetology* 40(2): 261-266.
- Faivovich, J., C.F.B. Haddad, P.C.A. Garcia, D.R. Frost, J.A. Campbell and W.C. Wheeler. 2005. Systematic review of the frog family Hylidae, with especial reference to Hylinae phylogenetic analysis and taxonomic revision. *Bulletin of American Museum of Natural History* 294: 1-240.
- Garcia, P.C.A. and G. Vinciprova. 1998. Range extensions of some anuran species for Santa Catarina and Rio Grande do Sul states, Brazil. *Herpetological Review* 29(2): 117-118.
- Garcia, P.C.A., J. Faivovich and C.F.B. Haddad. 2007. Redescription of *Hypsiboas semiguttatus*, with the description of a new species of the *Hypsiboas pulchellus* group. *Copeia* 2007(4): 933-951.
- Ghizoni-Jr, I.R., M.A.G. Azevedo and M. Port-Carvalho. 2000. Predação de *Hyla nahdereri* (Anura: Hylidae) por *Cyclarhis gujanensis* (Aves: Vireonidae) em Santa Catarina. *Melopsittacus* 3(3): 137-139.
- Giasson, L.O.M. 2001. Geographic distribution: *Scinax nasica*. *Herpetological Review* 32(4): 273.
- Giasson, L.O.M. and S.T.Z. Cechin. 2001. *Hyla nana*: First record. *Herpetological Review* 32(4): 271.
- Gutsche, A., A. Kwet, C. Kucharzewski, R. Lingnau and R. Günther. 2007. Wilhelm Ehrhardt and an evaluation of his amphibians and reptiles held in the Herpetological Collection of the Museum für Naturkunde, Berlin. *Mitteilungen aus dem Museum für Naturkunde Berlin Zoologische Reihe* 83(1): 80-93.
- Haddad, C.F.B., L.F. Toledo and Prado, C.P.A. 2008. *Anfíbios da Mata Atlântica, Guia dos Anfíbios Anuros da Mata Atlântica/Guide for the Atlantic Forest Anurans*. São Paulo: Editora Neotropica. 244 p.
- Iop S., V.M. Caldart, M.C. da Rocha, P.M. Paim and S.Z. Cechin. 2009. Amphibia, Anura, Hylidae, *Hypsiboas curupi* Garcia, Faivovich and Haddad, 2007: First record for the state of Rio Grande do Sul, Brazil. *Check List* 5(4): 860-862.
- Kwet, A. 2001. *Frösche im brasilianischen Araukarienwald - Anurengemeinschaft des Araukarienwaldes von Rio Grande do Sul: Diversität, Reproduktion und Ressourcenaufteilung*. Tübingen: Natur und Tier-Verlag Münster 192 p.
- Kwet, A. 2008. New species of *Hypsiboas* (Anura: Hylidae) in the *pulchellus* group from southern Brazil. *Salamandra* 44(1): 1-14.
- Kwet, A., M. Di-Bernardo and R. Maneyro. 2006. First record of *Chaunus achavali* (Anura: Bufonidae) from Rio Grande do Sul, Brazil, with a key for the identification of the species in the *Chaunus marinus* group. *Iheringia, série Zoologia* 96(4): 479-485.
- Lingnau, R., C. Zank, P. Colombo and G. Vinciprova. 2006. Amphibia, Hylidae, *Itapotihyla langsdorffii*: distribution extension. *Check List* 2(1): 38-39.
- Lutz, B. and W.C.A. Bokermann. 1963. A new tree frog from Santa Catarina, Brazil. *Copeia* 1963(3): 558-561.
- Machado, R.A. and C.E. Conte. 2001. Geographic distribution: *Hyla nahdereri*. *Herpetological Review* 32(2): 114.
- Orrico, V.G.D., R. Lingnau and L.O.M. Giasson. 2009. The advertisement call of *Dendropsophus nahdereri* (Anura, Hylidae, Dendropsophini). *South American Journal of Herpetology* 4(3): 295-299.
- Tedros, M., F. Kolenc and C. Borteiro. 2001. *Melanophryniscus montevidensis* (Philippi, 1902) (Anura, Bufonidae). *Cuadernos de Herpetologia* 15: 60.
- Zanella, N., C.S. Busin, A. Giusti, L. Crestani and R.S. Oliveira. 2007. Amphibia, Anura, Bufonidae, *Melanophryniscus devincenzii*: first record for Brazil. *Check List* 3(2): 104-104.

RECEIVED: February 2010

REVISED: April 2010

ACCEPTED: April 2010

PUBLISHED ONLINE: September 2010

EDITORIAL RESPONSIBILITY: Victor G. Dill Orrico

**APPENDIX 1.** List of published records of *Dendropsophus nahdereri* in three Brazilian states of Rio Grande do Sul, Santa Catarina and Paraná with their coordinates and references. These records are organized from southern to northern localities and were used to generate the distribution map.

RIO GRANDE DO SUL: municipality of Bom Jesus, 28°18'22" S, 50°42'37" W (this work). SANTA CATARINA: municipality of Campo Belo do Sul, Florestal Gateados, 28°02'01" S, 50°51'10" W and 27°59'32" S, 50°53'48" W, (this work); municipality of Anitápolis, 27°52'26" S, 49°07'39" W, (Orrico et al. 2009); municipality of Santo Amaro da Imperatriz, 27°41' S, 48°46' W (Conte et al. 2010), these coordinates are from city proper of municipality of Santo Amaro da Imperatriz, taken from free software Google Earth™; municipality of Rancho Queimado, 27°40' 21" S, 49°01'18" W (Garcia and Vinciprova 1998); municipality of Campos Novos, Ibicuf River, 27°34'30" S, 51°10'10" W, (Garcia and Vinciprova 1998); municipality of Vargem Bonita, 26°53' S, 51°48' W (Conte et al. 2010); municipality of Lebon Régis, Fazenda Serra da Esperança, 26°51'13" S, 50°40'00" W, (Orrico et al. 2009); municipality of Rio dos Cedros, Usina Hidrelétrica Cedros/Palmeiras da Centrais Elétricas de Santa Catarina S.A., 26°40' S, 49°20' W (Ghizoni-Jr et al. 2000); municipality of Corupá, Humboldt River, 26°24' S, 49°14' W (Gutsche et al. 2007), these coordinates are from city proper of municipality of Corupá near Humboldt River, taken from free software Google Earth™. PARANÁ: municipality of General Carneiro, 26°22' S, 51°22' W (Conte et al. 2010). SANTA CATARINA: municipality of São Bento do Sul, Estrada Saraiva, type locality, 26°14'55" S, 49°22'50" W, (Lutz and Bokermann 1963). PARANÁ: municipality of São José dos Pinhais, Serro e Gemido, 25°41' S, 49°03' W (Machado and Conte 2001).