

Aggregate Investment Expenditures on Traded and Nontraded Goods*

Rudolfs Bems[†]
Stockholm School of Economics

October 2004

Abstract

It is a well-established empirical regularity in the macroeconomic literature that the relative price of nontraded goods (expressed in terms of traded goods) correlates positively with income and exhibits large differences across space and time. This paper shows that, despite the large differences in the relative price, aggregate investment expenditure shares on traded and nontraded goods are remarkably similar in rich and poor countries. Furthermore, the two expenditure shares have remained close to constant over time, with the average nontraded expenditure share varying between 0.54-0.60 over the 1960-2002 period. Empirical results of this paper offer a new restriction for the two-sector growth model. We show that, with the restriction imposed on the model, only around 25 percent of the differences in PPP adjusted investment rates between rich and poor countries can be attributed to differences in relative productivity between traded and nontraded sectors, i.e., the Balassa-Samuelson effect.

JEL classification: F41; O41; E22

Keywords: Investments; nontraded and traded goods; capital formation

*I am grateful to Lars Ljungqvist, Timothy J. Kehoe, David Domeij, Martin Flodén and Jesper Lindé for comments and helpful advice. Financial support from Jan Wallander and Tom Hedelius foundation is gratefully acknowledged.

[†]Correspondence: Department of Economics, Stockholm School of Economics, Box 6501, SE-113 83 Stockholm, Sweden, rudolfs.bems@hhs.se.

1 Introduction

Models with traded and nontraded goods are widely used in economics. Yet, there has been no systematic empirical examination of the role that traded and nontraded goods play in the capital accumulation process. The goal of this paper is to fill this gap in knowledge.

One of the most consistent related empirical findings in the macroeconomic literature is that the relative price of nontraded goods in terms of traded goods exhibits a strong positive correlation with income in cross-section as well as time-series data.¹ Price data for traded and nontraded goods in investments offers no exception to this empirical regularity. In rich countries, such as the US, the relative price of nontraded goods in investments is 2-4 times higher than in rich countries, such as Kenya, Morocco and Egypt. Similarly, in OECD countries over the last 30 years the relative price of nontraded goods in investments has doubled. Furthermore, there is evidence that after properly adjusting for improvements in quality the variation in relative prices in cross-section and time-series data would be even larger.²

This paper shows that, despite the large variation in relative prices, aggregate investment expenditure shares on traded and nontraded goods are remarkably similar in rich and poor countries around the world. Moreover, the two investment expenditure shares have remained close to constant over the last 50 years.

To reach such conclusions this paper examines extensive empirical evidence – up to 115 countries for cross-section data (with 22 annual cross-sections including at least 70 countries) and up to 53 years for annual time-series data. Results show that both traded and nontraded goods are important ingredients in investments. For majority of countries aggregate investment expenditures on nontraded goods exceed expenditures on traded goods. There are no significant systematic differences in investment expenditure shares between countries with widely different income levels. The correlation between the investment expenditure share on nontraded goods and per capita income is between 0 and 0.25. We also find no significant differences in investment expenditure shares between different regions of the world, such as Africa, South-East Asia, Europe or Latin America.

Despite the large price changes, nontraded expenditure shares in most of the sample countries show no notable time trends during the second half of the 20th century. For the OECD countries a pooled linear time trend in the nontraded goods' expenditure

¹See among others Balassa (1964), Samuelson (1964), Kravis et al. (1982), De Gregorio et al. (1994).

²See Gordon (1990), Navaretti et al. (2000).

share has a 95 percent confidence interval of $(-0.015, -0.010)$ *per decade*. Cross-section averages are also close to trendless. Over the 1960-2002 period the average nontraded expenditure share has decreased from 0.60 to around 0.57. Since the relative price of nontraded goods in investments has more than doubled over the same period, for many economic applications the observed time trends can be treated as negligible. Importantly, our findings are based entirely on current price data and are therefore immune to problems that are associated with the measurement of changes in relative prices for the two investment components.

The results of this paper are applicable not only to small open economy models with traded and nontraded goods, but also to closed economy models that differentiate between equipment (or durable goods) and structures in investments. This is the case, since, as we show in the paper, 90 percent of aggregate investment expenditures are spent on acquiring output of only two sectors of economic activity – equipment from the manufacturing sector and structures from the construction sector. Clearly, the former is a traded and the later is a nontraded good.

To our knowledge, no previous research has extensively examined the question that is address in this paper. De Long and Summers (1991) and more recently Burstein et al. (2004) point out that investments have a very significant nontradable component. Drawing on evidence from 19 medium and high income countries Burstein et al. (2004) also report a strong negative correlation (-0.69) between investment expenditures on nontraded goods and the real per capita income. The considerably larger dataset of our paper does not support this finding. For the particular country-year observations our data also exhibit a negative correlation between the nontraded expenditure share and the real per capita income. However, when the whole dataset is considered the correlation is small and positive.

Our results agree with findings in Whelan (2003), who argues that the investment expenditure share on equipment in the US National Income and Products Accounts data exhibit no significant trend over the past 50 years. He finds that in the US over 1960-1999 durable goods accounted for 47 percent of investment expenditures.

The findings of this paper fit in well with several already established empirical regularities in the growth literature. First, it has been repeatedly reported that investment rates, calculated in domestic prices, correlate little with the real per capita income.³ Eaton and Kortum (2001) find that the same is true for equipment investment rates, calculated in domestic prices.⁴ Combined with either of the two findings, our results

³See among others Parente and Prescott (2000, p 39-40), Restuccia and Urrutia (2001).

⁴In the rest of this paper investment rates, calculated in domestic prices, will be called '*domestic*

would imply the other finding. Second, combined with the higher relative price of non-traded goods in rich countries, the empirical results of our paper imply that equipment intensity of investments should increase with income. De Long and Summers (1991, 1993) and Jones (1994) find this to be the case.

Our results provide empirical support for two-sector growth models in which aggregate investment expenditure shares on traded and nontraded goods (or equipment and structures) are nonzero and constant over time. There are, in fact, several models in the literature that satisfy this restriction, although the empirical motivation behind such a modeling choice has been missing.⁵

In the second part of the paper we set up a two-sector small open economy growth model with traded and nontraded goods in investments to address (or contribute to?) one of the unsettled questions in the growth literature – what causes the large differences in *international price* investment rates between rich and poor countries? Among other explanations Hsieh and Klenow (2003) have identified the Balassa-Samuelson effect, i.e. differences in relative productivity between traded and nontraded sectors across countries, as a potential source of differences in investment rates. Using the two-sector growth model we show that, when the composition of traded and nontraded goods in investments is correctly accounted for, only around 25 percent of the differences in *international price* investment rates between rich and poor countries can be attributed to differences in relative productivity between traded and nontraded sectors. The driving force behind this result is the empirical finding that the composition of investments and consumption between traded and nontraded goods is much more similar than is commonly assumed in the literature.

The structure of the rest of the paper is as follows. In Section 2 we examine how much of the aggregate investment expenditures are spent on the output of different sectors of economic activity. This section also presents the data sources and discusses several data related issues. Section 3 presents empirical findings about the nontraded expenditure shares in both time-series and cross-section data. Section 4 presents a small open economy two-sector growth model with traded and nontraded goods in consumption and investments. The model is solved both analytically and numerically and its implications for investment rate differences between rich and poor countries are examined. Section 5 concludes.

price investment rates, while investment rates, calculated in common prices for all countries, will be called '*international price*' investment rates.

⁵See, for example, Brock and Turnovsky (1994), Frenandez de Cordoba and Kehoe (2000) for open economy models and Greenwood et al. (1997), Whelan (2003) for closed economy models that comply with this empirical regularity.

2 The data

2.1 Structure of aggregate investment expenditures

We start by looking at the distribution of investment expenditures between output of different sectors of economic activity. The most appropriate data source for this purpose is input-output tables and we use data from the OECD input-output database (see OECD (2000a, 2000b)).

Table 1 presents investment spending for 10 OECD countries during 1970-1990. The expenditure pattern reveals that around 90 percent of investment expenditures are spent on the output of two sectors of economic activity: manufacturing and construction. Manufacturing goods in investments, e.g. machinery and transportation equipment, are traded goods, while output of construction sector, e.g. residential and nonresidential buildings, is nontraded. Measures of tradedness of sectoral output usually put these two sectors at the opposite extremes of the spectrum.⁶ The weight of manufacturing and construction in investment expenditures in Table 1 is stable across time and across sample countries, varying between 0.85-0.95.⁷

From the remaining 10 percent of aggregate investment expenditures 4/5 are spent on output of two other sectors: retail/wholesale trade and real estate/business services sectors, both of which are nontraded services. This leaves 2 percent of investment expenditures, which are spent on output of other sectors, such as financial intermediation, agriculture, transport and communications.

Structure of investment expenditures in Table 1 is very similar to the one reported in Burstein et al. (2004). Their sample refers to the 1990-1998 period and includes 18 observations from input-output tables for OECD countries as well as Argentina and Chile. Burstein et al. (2004) find that the construction sector accounts for 51 percent and distribution and real estate services account for 8 percent of investment expenditures.

While input-output data on investment expenditures might be sufficient to draw conclusions about the relative importance of traded and nontraded goods in aggregate investments, its coverage is clearly too limited to say anything convincing about the other questions that we set out to answer in this paper. An alternative data source is detailed gross fixed capital formation (GFCF) data from national accounts (NA). This data offer a considerably larger sample for our investigation. However, it also incorrectly assigns some of the investment expenditures on nontraded goods as expenditures on traded goods.

⁶ See e.g. De Grigorio et al. (1994).

⁷ Netherlands stands out from the rest of the sample, with weights for manufacturing and construction varying within 0.83-0.86 range.

Investment expenditures on the output of manufacturing and construction sectors in the NA data are reported separately, so that 90 percent of investment expenditures can be correctly account for as traded or nontraded. At the same time, retail/wholesale trade and real estate/business services, both of which are nontraded, are not accounted for separately. Hence, such expenditures are assigned to expenditures on either construction or manufacturing output.

Ignoring the 2 percent of investment expenditures spend on output of other traded and nontraded sectors, we conclude that NA data can account for investment expenditures on nontraded goods with an error in the range of -0.08 to 0.00 . The maximum error would apply, if all retail/wholesale trade and real estate/business services are assigned to the output from the manufacturing sector. If, on the other hand, these services are assigned to the expenditures on the output of construction sector, NA data would contain no error. In this case traded and nontraded expenditures are correctly accounted for.

Clearly, the actual size of the error is somewhere in between these two extremes. By comparing investment expenditure data from input-output tables and NA, it is possible to obtain an estimate of the size of the error. When data in Table 1 are compared with its counterpart from NA, we find that NA data underestimate the share of investment expenditures on nontraded goods by 0.040 - 0.059 . The size of the error appears to be stable during the 30 year period for which input-output tables are available.⁸

2.2 Data sources

In view of the considerably larger coverage of the NA data and the small size of the error, the rest of the paper builds on the evidence from the detail GFCF data of NA. Three distinct datasets are used:

1. Annual GFCF data from United Nations (UN) detailed NA statistics. This dataset covers the 1950-1997 period. The number of countries included in the sample gradually increases from 9 in 1950 to 30 in 1960, 71 in 1970, 80 in 1980 and thereafter gradually decreases to 74 in 1990 and 21 in 1997. In total there are 2515 observations. In this dataset GFCF data is divided into (i) residential buildings, (ii) non-residential buildings, (iii) other construction and land development and (iv) other. For the purpose of our investigation we define residential, non-residential

⁸Details of the estimation of the error are presented in Appendix A. This Appendix also looks at the role of traded intermediate inputs in production of structures and the role of nontraded intermediate inputs in production of equipment.

buildings, other construction and land development as nontraded investment goods and 'other' products as traded investment goods.

2. NA data for 1970, 1975, 1980, 1985 and 1996 benchmarks in Penn World Tables (PWT). Details of this data are available in Summers et al. (1995) and Heston et al. (2002). This dataset is further complemented with data for 1987 from Nehru-Dhareshwar (1993). The sample size for different years gradually increases from 16 countries in 1970 to 34 in 1975, 60 in 1980, 65 in 1985, 42 in 1987 and 115 in 1996. In 1996 PWT benchmark GFCF data are divided into (i) construction and (ii) machinery and equipment. In this case we define construction as nontraded input and machinery and equipment as traded input. The same division is also available for the 1987 data. Benchmark data for 1970, 1975, 1980 and 1985 report up to 20 subcategories of GFCF, which we divide into traded and nontraded sectors by defining all equipment and machinery related subcategories as traded and all construction related subcategories as nontraded.
3. OECD annual detailed NA data, which contains GFCF data for a period from 1970-1995 until 2002, depending on a country. Detailed investment data from 1970 is available for 9 countries.⁹ For 12 additional countries data become available starting with some year between 1970 and 1995. For three of the sample countries data for 2002 was not available. Disaggregation of GFCF in OECD detailed NA distinguishes between six types of investment inputs: (i) products of agriculture, forestry, fishing and aquaculture, (ii) metal products and machinery, (iii) transport equipment, (iv) dwellings, (v) other buildings or structures and (iv) other products. For our purpose we define (i)-(iii) as traded inputs and (iv)-(v) as nontraded.

Treatment of 'other products' requires a more careful consideration. The main components of this subgroup of investment expenditures are intangible fixed assets (e.g., mineral exploration, computer software, entertainment, literary or artistic originals) and costs associated with the transfer of ownership of non-produced assets. Although most of the items in the subgroup are nontraded, some types of computer software, for example, should be treated as traded services. Unfortunately no further breakdown of 'other products' category is available. For the purpose of our investigation we therefore exclude 'other products' from GFCF data. On average, this amounts to excluding 3 percent of GFCF in 1970 and 10 percent of GFCF in 2002.

⁹Also includes New Zealand with data coverage starting from 1971.

Although all three datasets use NA statistics, there are good reasons for examining each of them. The UN dataset contains the largest number of countries and covers the whole post WWII period. Data for this dataset is collected using standardized NA statistics reports that the UN statistics office is provided with by the national statistical offices of its member states.

The benchmark data for PWT offers the largest cross-section comparison of 115 countries for 1996. GFCF data in PWT is more detailed than in the UN dataset and is compiled as part of a worldwide IPC project. Data from Nehru and Dhareshwar (1993) should in principle be treated as a separate cross-section dataset for 1987, compiled by the authors using various sources (see Nehru and Dhareshwar (1993) for details).

The distinguishing feature of the OECD dataset is that its data is compiled using SNA 93 definitions. This is the reason why the GFCF subgroup 'other products' in the OECD dataset is not available as a separate subgroup in the other datasets. In addition, the OECD dataset is the only one that contains GFCF data for the 1998-2002 period.

3 Empirical evidence on investment expenditure shares

This section first presents empirical evidence from time-series data and then looks at the evidence from cross-section comparisons. At the end of the section we discuss the compatibility of our findings with several already established empirical regularities in the growth literature.

3.1 Time-series data

Time series results are based on annual investment expenditure data from the OECD NA and the UN NA. Starting with the OECD dataset, Table 2 summarizes investment expenditure shares on nontraded goods for 21 OECD countries. All country-year observations of this variable are between 0.40-0.76. The dashed line in Figure 1 depicts the average yearly expenditure share on nontraded goods in the OECD data for the 9 countries with full 1970-2002 coverage.¹⁰ Between 1970 and 2002 the average expenditure share has decreased by a mere 0.01.

Figure 2 depicts the annual time series data for the six largest economies in the OECD sample. We see that in each country the nontraded expenditure share is quite stable over time and differences across countries are small but persistent. For two of the

¹⁰These countries are: Denmark, Finland, Germany, Italy, Netherlands, United States, Norway, United Kingdom and also New Zealand with 1971-2001 coverage.

countries in Figure 2, the US and France, there is a clear time trend in the expenditure shares, although the slope of this trend is small.

Data for the six largest economies are representative of the rest of the sample countries. Panel 1 in Table 4 shows results of a simple linear time trend regression for sample countries with at least 30 years of data. Time trends in Table 4 are expressed as a change in aggregate investment expenditures on nontraded goods over a *decade*. For 5 out of 9 countries the time trends are significantly different from zero at a 5 percent confidence level. At the same time, with exception of Denmark, the point estimate of the time trends in all countries is between -0.03 to 0.03 per decade. Panel 1 in Table 5 shows results for a pooled regression containing the same 9 countries and a panel regression with country dummies. In either case the results suggest that there is a small, negative and significant time trend in the investment expenditure data.

Between some of the countries in the OECD dataset there are significant differences in investment expenditures on traded and nontraded goods. From Table 1, the highest average nontraded expenditure share for a country (Canada, 0.689) is 0.226 higher than the lowest average expenditure share (Sweden, 0.463). The pattern of high and low expenditure shares shows persistence over time. To measure this persistence we divide the OECD dataset into three equal eleven year periods and calculate the correlation of nontraded expenditure shares between any two periods. Between 1970-80 and 1981-91 the expenditure share correlation is 0.59. For 1970-80 and 1992-2002 the correlation is 0.56. Between 1981-91 and 1992-2002 the correlation is 0.81.

Data from the UN NA provide further support for the observations made with the OECD data (see Table 3). The UN dataset includes at least one observation for 113 countries and the range of nontraded expenditure shares is generally wider.¹¹ However, 95 percent of all country-year observations for nontraded expenditure shares are in 0.33-0.79 range and 90 percent are in 0.39-0.75 range.

Sample average nontraded expenditure share in the UN NA data, also depicted in Figure 1, is stable over time. While during the first 10 years of the sample (1950-1959) the share decreases by 0.08 from 0.68 to 0.60, during the subsequent 37 years the share fluctuates within the 0.54-0.60 range with only a slight downward trend.

Panels 2 and 3 in Table 4 present time trend regressions for OECD and non-OECD countries. With few exceptions, for both sets of countries results are very similar to what we observed in Panel 1 of Table 4. This is further confirmed with the results in Panel 2 of Table 5. Point estimates for time trends in OECD countries in Table 5 range

¹¹At one extreme, in Kyrgyzstan the nontraded expenditure share in 1996 is 0.99 and, on the other extreme, in Tanzania in 1989 the share is 0.20.

between -0.012 to -0.014 per decade. As can be expected, non-OECD countries exhibit more variation in the time trends. Also, in non-OECD countries time trends in pooled and panel regressions of Table 5 are larger than in OECD countries, ranging between -0.016 to -0.020 per decade.

Average nontraded expenditure shares across countries in the UN data range from 0.34 for Saint Kitts and Nevis to 0.97 for Kyrgyzstan. Large differences in nontraded expenditure shares are present not only at the extremes. Thus, in the sample on 113 countries, the 10th smallest average nontraded expenditure share is 0.429 (Equatorial Guinea) while the 10th largest is 0.719 (Iceland). Table 6 shows the persistent pattern of high and low nontraded expenditures over time in the UN dataset divided into five periods: 1950-59, 1960-69, 1970-79, 1980-89 and 1990-97. Correlations of the expenditure shares between any two subsequent decades are in 0.64-0.86 range, with a smaller, but still positive correlations between any other two decades.

To summarize the empirical evidence from time series data, several points need to be stressed. First, both traded and nontraded goods are important ingredients in investments. Furthermore, aggregate investment expenditures on nontraded goods often exceed expenditures on traded goods.

Second, at a yearly frequency nontraded expenditure shares of individual countries show little variation and no notable time trends during the 2nd half of the 20th century. As a result, sample averages also exhibit no economically significant time trend. A simple linear trend for the average nontraded expenditure share in the OECD and UN detailed NA data suggests that over the 1960-2002 period (43 years) the share has decreases from 0.60 to around 0.57. This finding is particularly remarkable, given the large changes in relative prices of traded and nontraded goods in investments since 1960s.

Third, there are sizable and persistent differences in expenditure shares between some of the sample countries.

3.2 Cross-section data

Equally interesting is the cross-section evidence about differences in nontraded expenditure shares across different country characteristics, most importantly the level of income. Table 7 presents the cross-section results from the UN dataset for each year between 1950 and 1997. The mean of the sample, presented in Figure 1, was already discussed with the time series evidence. The forth column of Table 7 shows the correlation between the nontraded expenditure share and PPP adjusted income per capita across countries.¹² In

¹²Several measures of economic activity were considered, including real GDP per capita in constant international prices, GDP per capita in current prices and real GDP per worker in constant international

all of the sample years the correlation is within -0.31 to 0.32 range. Furthermore, with exception of 6 years between 1950-53 and 1995-1996 the correlation is within -0.03 to 0.32 range. Thus, in the UN dataset there is a small and positive correlation between expenditure shares and per capita income in all but a few sample years. The average correlation across 1950-97 is 0.10.

Cross section results from the PWT dataset, presented in Table 8, show a very similar picture. For all six sample years the correlation is positive and in 5 out of 6 cases the correlation is between 0.04 and 0.31. To illustrate the correlation between income and expenditure shares Figure 3 plots the two data series for the largest cross-section sample from the PWT dataset. Figures 4-7 present the same data from the UN dataset for years 1960, 1970, 1980 and 1990.

Next, we use the largest PWT benchmark dataset for 1996 to investigate the differences in the nontraded expenditure shares across different regions of the world. Table 9 shows that, again, there is very little variation. The average coefficients for eight different country groups range between 0.51 and 0.66.

The only notable exception in the PWT 1996 benchmark dataset is Africa, where the coefficient is much lower than in other regions. For 1996 nontraded expenditure share in each of the 22 African countries is below the sample average of 0.51. To find out more about African countries, Table 9 includes also the average coefficients for Africa in 1985 and 1980 PWT benchmark datasets. The 1996 results for Africa appear to be an exception. Since Africa represents a sizable country group, this can explain why the average coefficient in the whole PWT 1996 benchmark dataset (see Table 8) is lower than in earlier years. The last column of Table 9 reports correlations with income for each of the country group. For five out of eight groups the correlation is in -0.02 to 0.32 range.

Table 10 presents the UN data separately for four country groups: Africa, Europe, Latin America and South East Asia. Years before 1960 have been excluded from the table, since the number of countries in any of the groups did not exceed two. With few exceptions, the average nontraded expenditure share in any of the groups does not deviate from the total sample average by more than 0.05.¹³ This result is illustrated in Figure 8. Note that, in contrast to PWT 1996 benchmark data, expenditure shares in African countries during 1990-95 are only slightly below the sample average and for the sample of 3 African countries in 1996 it is above the sample average.

prices. Correlations between investment expenditure share and different measures of income are very similar.

¹³The two exceptions to this rule is Latin America in 60s and Africa in 90s. In both cases the number of countries in the regional group was less than 7.

Table 11 summarizes the cross-section results for OECD countries in the OECD dataset. Average expenditure share for the sample of 21 developed countries is very similar to the average numbers in the UN and PWT datasets. During 1970-1990 period in the OECD country group the correlation between income and nontraded expenditure shares is systematically higher than the correlation that was observed for the whole sample in the UN data. This finding is confirmed with the correlation coefficients for European countries in Table 10. During the 90s, the correlation is close to the total sample correlation in the UN dataset.

The cross-section results are not affected, if we take into account the differences in the size of population across countries. The average correlation between the size of population and expenditure shares in the UN dataset is 0.01, with correlations for different years varying in the -0.20 to 0.10 range. One observation that does stand out in all cross-section comparisons is that countries with lower per capita income exhibit more variation in nontraded expenditure shares (e.g. see Figures 3-7). The same is also true for the time series data (see Table 4).

Overall, cross-section evidence indicates that nontraded expenditure shares increase systematically with the level of per capita income. However, the magnitude of the increase is small. For example, the linear trend fitted into Figures 3-7 suggests that country with a per capita income that is half of the US level has a nontraded expenditure share, which is 0.01-0.06 lower than the nontraded expenditure share in the US. These figures are representative of the whole cross-sectional evidence. Importantly, there are no notable differences in expenditure shares across different regions of the world. As with the time-series evidence, this result is particularly remarkable given the large differences in relative prices of traded and nontraded goods in investments between poor and rich countries.

Our cross-section results differ from findings in Burstein et al. (2004), who in a sample of 19 countries find a significant negative correlation between the investment expenditure share on nontraded goods and real per capita income. To reconcile the results of the two studies, Table 12 presents the results of Burstein et al. (2004) and replicates their study using the data of our paper. Columns 1-5 of the table present the results of Burstein et al. (2004). The fourth column presents the share of construction sector output in investment expenditures. The fifth column presents the same share for all nontraded sectors, defined in Burstein et al. (2004) as construction, retail/wholesale trade and real estate/business services. All expenditure data, except from Brazil, are obtained from input-output tables. Notice that data for each country refer to some year over the 1990-1999 period, presented in the second column.

The last three columns of the table present comparable data from each of our datasets. In case of the UN data, the comparison is restricted by the fact that for most countries data series end in 1996-97 and therefore six of the observations are missing. For the OECD data comparison is restricted by the fact that our dataset covers only selected OECD countries and Burstein et al. (2004) sample includes several non-OECD countries. Consequently, six observations are also missing. In case of the PWT data we are restricted to using 1996 data for each country.

Burstein et al. (2004) find that construction expenditures and per capita income have a correlation coefficient of -0.69, while for all nontraded expenditures the correlation coefficient is -0.64. The correlation coefficients in the three comparable samples from our datasets are also negative, but smaller, ranging from -0.01 to -0.29.

What explains the large differences in correlation between real income per capita and investment expenditure shares in our paper and in Burstein et al. (2004)? The negative correlation coefficients at the bottom of the last three columns of Table 9 indicate that, at least partly, the differences are due to the particular years from which the Burstein et al. (2004) sample is selected. For 9 out of 19 countries the data is for the 1995-96 period. Cross-section results in Table 7 show that for these two particular years the UN data also exhibits negative correlations between per capita income and expenditure shares (-0.15 in 1995 and -0.23 in 1996). However, these two years are very clear outliers when compared to the whole 1954-1997 period.¹⁴

The remaining differences are likely to stem from the limited sample size in the Burstein et al. (2004) study. Note from Table 10 that for subgroups of countries in the UN dataset it is not uncommon to find correlations with per capita income that are significantly different from the correlation in the aggregate sample. For example, in 1981 the expenditure shares – income correlation for 11 South East Asian countries is -0.42. In the same year for 16 African countries we find a correlation of -0.36. At the same time, the average correlation for the whole the UN sample for the same year is -0.01. Significant deviations in correlation coefficients can also be found for Europe and Latin America.

¹⁴In the PWT 1996 benchmark data, the correlation between per capita income and expenditure shares is 0.12. However, as already noted, 1996 data for African countries in this dataset appears to contain an error. If the African countries are excluded, then PWT 1996 benchmark data also exhibits a small negative correlation between income and expenditure shares.

3.3 Compatibility with existing empirical regularities

Our empirical findings fit in well with the body of already established empirical regularities. This provides an additional reliability check for our results.

First, consider the empirical fact that the relative price of nontraded goods increases with the level of income. Combined with our findings about investment expenditures, this fact implies that, as per capita income increases, investments become more intensive in traded goods or equipment. In a series of papers Summers and De Long (1991, 1993) conclude that this is the case in the data. They find a strong positive correlation between equipment intensity of investments and economic growth.

Second, Eaton and Kortum (2001) note that *domestic price* investments in equipment, as a share of GDP, do not vary systematically with the level of income. Together with our findings this implies that aggregate *domestic price* investment rates also should not vary systematically with income. Parente and Prescott (2000) find that this indeed is the case for a wide set of countries over the 1960-2000 period. The same empirical fact is also stressed by Hsieh and Klenow (2003) and Restuccia and Urrutia (2001). Note that findings in Burstein et al. (2004) imply that either the *domestic price* investment rates are decreasing with income or *domestic price* investment rates in equipment are increasing with income and thus contradict with previous findings in the literature.

4 A theoretical implication: Can Balassa-Samuelson effect account for investment rate differences between rich and poor countries?

One of the most consistent empirical growth facts is that *international price* investment rates in rich countries are 2-3 times higher than in poor countries. In this section we look at the implications of our empirical findings for the theoretical literature that investigates sources of the significant difference in investment rates.¹⁵

To provide a convincing explanation for the differences in investment rates, a theoretical model needs to satisfy two closely related empirical regularities. First, the relative price of nontraded goods is increasing with income. Second, *domestic price* investment rates do not correlate with income. Restuccia and Urrutia (2001) show that, among other possible explanations such as distortionary policies in poor countries, differences in international price investment rates can be a result of differences in relative produc-

¹⁵Ultimately the goal of this literature is to explain income differences across countries, but for the purpose of this paper attention is restricted to explaining differences in investment rates.

tivity in production of investment and consumption goods. Hsieh and Klenow (2003) take this finding one step further. Authors argue that differences in the relative price of nontraded goods across income are driven by differences in the price of nontraded rather than traded goods. Consequently, they use a small open economy two-sector growth model and show that only productivity differences in production of consumption and investment goods can account for the differences in *international price* investment rates.

These finds beg for a question: what stands behind the differences in relative productivity between sectors producing investment and consumption goods? Hsieh and Klenow (2003) suggest that the Balassa-Samuelson effect is the prime candidate for explaining such differences. Our empirical findings, however, show that in rich as well as poor countries investment expenditures on nontraded goods are at least as large as expenditures on traded goods. Thus, the often used notion that investment goods are traded while consumption is nontraded contradicts empirical evidence.

In this section we investigate how much of the differences in investment rates between rich and poor countries can be generated with the two-sector small open economy growth model, when nontraded and traded goods in investments and consumption are correctly accounted for. This is equivalent to asking how much of the required productivity differences in production of investment and consumption goods can be assigned to differences in traded-nontraded nature of sectoral output.

4.1 Theoretical framework

We start by presenting a simple two-sector small open economy growth model, which is general enough to accommodate most of the formulations that have been used in the literature. Importantly, model setup allows for traded and nontraded goods to be used in both investments and consumption. To keep the model simple and focus on the main task we formulate it in a deterministic environment. Also, we ignore any labor-leisure considerations.

The representative consumer in the model solves

$$\max_{\{c_{Tt}, c_{Nt}, k_{Tt+1}, k_{Nt+1}, l_{Tt}, l_{Nt}, b_{t+1}\}} \sum_{t=0}^{\infty} \beta^t u(F_C(c_{Tt}, c_{Nt}))$$

subject to the following per-period budget constraint

$$c_{Tt} + p_{Nt}c_{Nt} + q_{t+1}F_I(x_{Tt}, x_{Nt}) + b_{t+1} \leq w_t + (1 + r_t)b_t + p_{Nt}F_N(k_{Nt}, l_{Nt}) + F_T(k_{Tt}, l_{Tt}),$$

Here β is the subjective discount rate; c_{Tt} and c_{Nt} represent traded and nontraded components of consumption, which through the function $F_C(c_{Tt}, c_{Nt})$ are aggregated into consumption goods; the total inelastic labor supply in the economy is normalized to unity, so that in every period $l_{Tt} + l_{Nt} = 1$ and labor income is w_t ; k_{Tt} and k_{Nt} are capital stocks in traded and nontraded sectors, which together with labor input produce sectoral output with $F_j(k_{jt}, l_{jt}), j \in \{T, N\}$; $F_I(x_{Tt}, x_{Nt})$ represents new investments, which can be purchased at a price q_{t+1} ; b_t is outstanding foreign assets; r_t is the interest rate charged on foreign assets. Price of the traded good is used as the numeraire.

Resource constraints for traded and nontraded sectors of the economy are

$$\begin{aligned} c_{Nt} + x_{Nt} &\leq F_N(k_{Nt}, l_{Nt}) \\ c_{Tt} + x_{Tt} + b_{t+1} - b_t(1 + r_t) &\leq F_T(k_{Tt}, l_{Tt}) \end{aligned}$$

Output in each sector can be used either for consumption, c_j , or investment, x_j , purposes. In the traded sector the difference between domestic absorption and output is equal to the trade balance.

Capital in this economy is accumulated according to

$$k_{Tt+1} + k_{Nt+1} = (1 - \delta)(k_{Tt} + k_{Nt}) + F_I(x_{Tt}, x_{Nt})$$

where δ is the depreciation rate and in each period $F_I(x_{Tt}, x_{Nt})$ is acquired from the investment production sector.

Producers of investment goods solve

$$\max_{\{x_{Tt}, x_{Nt}\}} q_{t+1} F_I(x_{Tt}, x_{Nt}) - x_{Tt} - p_{Nt} x_{Nt},$$

so that new investment goods in the economy are potentially produced by using the output of both traded and nontraded sectors.

In the framework of this model the setup with traded investment goods and nontraded consumption goods corresponds to assuming that $F_C(c_{Tt}, c_{Nt}) = c_{Nt}$ and $F_I(x_{Tt}, x_{Nt}) = x_{Tt}$. Hsieh and Klenow (2003) show that under such assumptions a relatively higher productivity in the investment sector (relative to the consumption sector) in rich countries leads to (i) higher relative prices of nontraded goods in rich countries and (ii) higher *international price* investment rates in rich countries, while *domestic price* investment rates are the same in rich and poor countries. All three of these model predictions find strong empirical support.

The spirit of our investigation is to examine if these three empirically relevant results can be generated in a model where productivity differences come from traded relative to nontraded sectors of economic activity. Our empirical results suggest this is not identical to assigning productivity differences to investment and consumption sectors. We examine both qualitative and quantitative predictions of the model.

4.2 Analytical solution

It is instructive to start the investigation by looking at the analytical solution of the two-sector growth model presented in Section 4.1. Motivated by earlier empirical findings, we assume that traded and nontraded goods are aggregated into investments using

$$F_I(x_{Tt}, x_{Nt}) = Gx_{Tt}^\gamma x_{Nt}^{1-\gamma}. \quad (1)$$

In the model this imposes constant investment expenditure shares on traded and nontraded goods. Production function in traded and nontraded sectors is assumed to be

$$F_j(k_{jt}, l_{jt}) = A_j k_{jt}^\alpha l_{jt}^{1-\alpha} \quad \text{for } j \in \{T, N\}.$$

Traded and nontraded goods are aggregated in consumption goods through

$$F_C(c_{Tt}, c_{Nt}) = c_{Tt}^\varepsilon c_{Nt}^{1-\varepsilon}, \quad (2)$$

so that consumption expenditures on traded and nontraded goods are also constant. The assumed functional form for consumption aggregator is chosen because of its analytical convenience. It will be relaxed in the later part of this section.

Outcomes of the model are evaluated by comparing solutions for model economies with differing relative productivities in traded and nontraded production sectors, in particular

$$\left(\frac{A_T}{A_N}\right)^{\text{rich country}} > \left(\frac{A_T}{A_N}\right)^{\text{poor country}}.$$

In all other respects model economies are identical. To avoid an additional layer of complexity, we assume that all model economies are in a steady state with zero external asset position, i.e., $b = 0$. Each country is a small open economy and takes the world interest rate as given.

The analytical solution of the model's steady state is presented in Appendix B. Here we present only the part of the solution that is relevant for our discussion. Expression

for the domestic price steady state investment rate in the model is

$$\frac{I}{Y} = \frac{x_T + p_N x_N}{x_T + c_T + p_N (c_N + x_N)} = \frac{\alpha \delta}{r + \delta}. \quad (3)$$

The investment rate is positively related to the capital income share and negatively related to the return on capital. This result is the same as in the model with fully traded investments and nontraded consumption. Since investment rate in (3) does not depend on productivity levels in the two sectors, all countries exhibit the same constant domestic price investment rates. The investment expenditure share on nontraded goods in the model is also the same in all countries and equal to

$$\frac{p_N x_N}{x_T + p_N x_N} = (1 - \gamma).$$

This result follows directly from the functional form imposed in (1).

The relative price of nontraded goods in terms of traded goods, p_N , in the model satisfies

$$p_N = \frac{A_T}{A_N}. \quad (4)$$

Model economies that exhibit a higher relative productivity in the traded sector will also exhibit higher relative price of nontraded goods. This result is also the same as in the model with fully traded investments and nontraded consumption.

With the relative price of nontraded goods varying across countries, model outcomes expressed in common prices will differ from outcomes expressed in domestic prices. To compare model outcomes expressed in terms of common prices across countries, the relative price of nontraded goods is kept fixed at p_N^{PPP} and the effect of productivity changes on steady state quantities is examined.

Since investment expenditure shares on traded and nontraded goods are constant, changes in the relative price of nontraded goods imply that model economy with higher relative productivity in the traded sector exhibits higher equipment intensity in investments. This is in line with empirical evidence presented in De Long and Summers (1991, 1993).

The international price investment rate in the model can be expressed as

$$\begin{aligned} \frac{I^{PPP}}{Y^{PPP}} &= \frac{x_T + p_N^{PPP} x_N}{x_T + c_T + p_N^{PPP} (c_N + x_N)}, \\ \frac{I^{PPP}}{Y^{PPP}} &= \frac{\frac{\alpha\delta}{r+\delta} \left[1 - \gamma \left(1 - \frac{A_T}{A_N} / \frac{\tilde{A}_T}{\tilde{A}_N} \right) \right]}{1 - \left[\gamma \frac{\alpha\delta}{r+\delta} + \varepsilon \left(1 - \frac{\alpha\delta}{r+\delta} \right) \right] \left(1 - \frac{A_T}{A_N} / \frac{\tilde{A}_T}{\tilde{A}_N} \right)}, \end{aligned} \quad (5)$$

where $\tilde{A}_T/\tilde{A}_N = p_N^{PPP}$ denotes the sectoral productivity ratio in the base country. Equation (5) shows that in terms of a common international price, investment rate is affected by the deviation of the sectoral productivity ratio from the same ratio in the base country. If $A_T/A_N = \tilde{A}_T/\tilde{A}_N$, then (5) reduces to (3). It can be further shown that

$$\frac{\partial \frac{I^{PPP}}{Y^{PPP}}}{\partial \frac{A_T}{A_N}} = (\gamma - \varepsilon) \frac{\frac{\delta\alpha}{r+\delta} \left(1 - \frac{\delta\alpha}{r+\delta} \right) \frac{\tilde{A}_T}{A_N}}{\left[1 - \left[\gamma \frac{\alpha\delta}{r+\delta} + \varepsilon \left(1 - \frac{\alpha\delta}{r+\delta} \right) \right] \left(1 - \frac{A_T}{A_N} / \frac{\tilde{A}_T}{\tilde{A}_N} \right) \right]^2}. \quad (6)$$

According to (6) model economies with higher relative productivity in the traded sector exhibit higher international price investment rates if $\gamma > \varepsilon$ and vice versa if $\gamma < \varepsilon$. The intuition behind this result is simple. In the model both investment and consumption expenditure shares on traded and nontraded goods are constant across countries. When traded goods play a more important role in investments than consumption, i.e. $\gamma > \varepsilon$, and the relative price is fixed at p_N^{PPP} , higher relative productivity in traded sector increases the weight of investments in output at the expense of consumption. As a result, in term of a common price, higher relative productivity in the traded sector leads to a higher investment rate.

We conclude that subject to a condition that $\gamma > \varepsilon$, the model with traded and nontraded goods in both consumption and investments delivers qualitatively the same results as the more restrictive version of the model with only traded goods in investments and only nontraded goods in consumption.

4.3 Quantitative results

Are the investment rate differences in the model quantitatively important, when compared to the data? To answer this question we compare the differences in *international price* investment rates in the data with the differences that can be generated in a parametrized two-sector model.

We start by summarizing the empirical evidence. The best available data comparing

international price investment rates across countries come from the PWT dataset. For illustrative purpose Table 13 presents the relevant data from the PWT 1996 benchmark, with countries grouped according to their real GDP per worker relative to the US. In line with earlier empirical findings, *domestic price* investment rates do not vary systematically with income, while *international price* investment rates in poor countries are 2-3 times lower than in rich countries. Similar magnitude of differences in *international price* investment rates has been found by other studies (see Hsieh and Klenow (2003)).

The last two rows of Table 13 compare prices of traded and nontraded goods across income levels. Traded goods' prices are represented by the price of machinery and equipment, while nontraded goods' prices are represented by the prices of structures. As can be expected, the relative price of nontraded goods in terms of traded goods increases with income. Also, as already pointed out by Hsieh and Klenow (2003), the price of traded goods does not correlate with income. Hence, differences in the relative price are driven by differences in the price of nontraded goods between rich and poor countries.

The magnitude of price differences exhibits a substantial variation depending on the subset of goods and services considered as well as the year of the benchmark data.¹⁶ However, most of the estimates can be put in the boundaries of 3-8 times higher relative prices of nontraded goods in the rich countries. Given the uncertainty surrounding the magnitude of differences in the relative price, we will consider a wide range of price differences.

Turning to the model, first recall that the only source of heterogeneity in model outcomes is the difference in relative productivity across model economies. To compare model outcomes with the data, we use equation (4) to generate the observed differences in the relative price of nontraded goods between rich and poor countries. Performance of the model is then evaluated by comparing differences in *international price* investment rates in the model and in the data.

To parametrize the model we set capital income share, α , equal to 1/3. This is a standard value in the literature. Gollin (2002) finds no correlation between capital income shares and the level of income. There is also evidence that capital income shares are very similar in highly aggregates sectors of economic activity, such as the traded and nontraded (see Parente and Prescott (2000)). The discount rate is set at $\beta = 0.964$ and the depreciation rate is set at $\delta = 0.073$. These two values are chosen so that the

¹⁶For example, Hsieh and Klenow (2003) measure the price of nontraded goods using a subset of consumed services. Their estimated price elasticity with respect to income in the PWT 1980 and 1985 benchmarks suggests that the price of nontraded goods in rich countries is around 4 times higher than in poor countries. In the 1996 benchmark the estimated difference is twice as large.

domestic price investment rate in model economies is the same as Table 13, i.e. 0.22, and capital output ratio is equal to 3.0.

As a benchmark for further discussion, we first consider the model specification with fully traded investments and nontraded consumption, which corresponds to assuming that $\varepsilon = 0$ in equation (2) and $\gamma = 1$ in equation (1). Results of the benchmark parametrization are summarized with the solid line in Figure 9. In this figure x-axis represents the relative price of nontraded goods in the poor model economy as a fraction of the relative price in the rich model economy. Y-axis represents the *international price* investment rate in the poor model economy, with the rich model economy taken as the base country. Thus, on both axis value 1 corresponds to the rich model economy. According to data, the empirically relevant range on the x-axis is between 0.125-0.33. On the y-axis the relevant range is between 0.33-0.5. The magnitude of differences in the *international price* investment rates that we observed in the data can be match rather closely with the benchmark model specification.

In the second model specification, motivated by the empirical results of this paper, we set the investment expenditure share on nontraded goods, γ , in equation (1) equal to 0.40. For aggregation of consumption in equation (2) we set $\varepsilon = 0.25$. This particular parameter value is taken from Burstein et al. (2004), who estimate that the consumption expenditure share on traded goods in medium and high income countries is 1/4 of the aggregate consumption expenditures.¹⁷ Note that the parameter values for ε and γ imply that consumption is more intensive in nontraded goods than investments and therefore from (6) we know that the model's *international price* investment rate will increase with the level of income.

The corresponding solution in Figure 9 shows that with this empirically motivated parametrization model can account for only 15-30 percent of the differences in *international price* investment rates between rich and poor countries. Note that this conclusion does not depend on the magnitude of differences in the relative price of nontraded goods.

Differences in outcomes of the two model parametrizations can be better understood by looking at the relevant ratio from the model's analytical solution

$$\frac{(I/Y)_{poor}^{PPP}}{(I/Y)_{rich}^{PPP}} = \frac{\left(1 - \frac{A_T}{A_N} / \frac{\tilde{A}_T}{\tilde{A}_N}\right)^{-1} - \gamma}{\left(1 - \frac{A_T}{A_N} / \frac{\tilde{A}_T}{\tilde{A}_N}\right)^{-1} - [\gamma \frac{I}{Y} + \varepsilon (1 - \frac{I}{Y})]} \quad (7)$$

The ratio in (7) is obtained from (5), where we have substituted in the expression for

¹⁷We found the same average expenditure share also in the OECD input-output tables for 1990.

domestic price investment rate from (3). As in Figure 9, the rich model economy is taken as the base country, so that $\frac{A_T}{A_N} / \frac{\tilde{A}_T}{\tilde{A}_N} < 1$.

Compare the second term in the numerator and denominator of equation (7): γ and $\gamma \frac{I}{Y} + \varepsilon (1 - \frac{I}{Y})$. The later term is a weighted average of investment and consumption expenditure shares on traded goods, weighted by the investment and consumption rates correspondingly. First, note that for the ratio in (7) to be less than unity we need $\varepsilon < \gamma$. Second, *ceteris paribus*, the ratio is smaller the larger is γ and the smaller is ε . Hence, the ratio is smaller, the larger is the difference $\gamma - \varepsilon$.

The benchmark parametrization can therefore be interpreted as the extreme case, which allows for maximum differences in expenditure shares and, consequently, maximum differences in *international price* investment rates. Intuitively, it is then clear that if the model solution with the most favorable values of γ and ε can closely match the differences in investment rates, under the more realistic parametrization only a fraction of the investment rate differences can be accounted for.

We should also note the limited effect of differences in sectoral productivities on the *international price* investment rates. In the extreme case with $\frac{A_T}{A_N} / \frac{\tilde{A}_T}{\tilde{A}_N} \rightarrow 0$ investment rate ratio in (7) can be written as

$$\frac{(I/Y)_{poor}^{PPP}}{(I/Y)_{rich}^{PPP}} = \frac{1 - \gamma}{1 - [\gamma \frac{I}{Y} + \varepsilon (1 - \frac{I}{Y})]}. \quad (8)$$

Thus, although larger variation in sectoral productivity ratios does increase the differences in *international price* investment rates, asymptotically its effect is limited to (8).

4.4 Sensitivity analysis of numerical results

How sensitive are the results in Figure 9 to the assumed values of β , δ and α ? Equation (7) together with equation (3) show that the discount factor, depreciation rate and capital income share affect the *international price* investment rate only through their effect on weights, I/Y and $1 - I/Y$, for the two expenditure shares. Thus, as long as the model is restricted to exhibit a reasonable domestic price investment rate, which for our parametrization is 0.22, results in Figure 9 are not sensitive to values of β , δ and α . Furthermore, since there is substantial empirical evidence that *domestic price* investment rates do not correlate with income, any correlation between parameters β , δ , α and income should not affect results in Figure 9.

Extensive empirical evidence presented in this paper suggests that around 60 percent of investment expenditures are spent on nontraded goods and that this share does not

vary systematically with the level of income. However, for consumption expenditures the available evidence is more scarce. To deal with this shortcoming, Figure 9 also depicts solution of model parametrization with $\gamma = 0.40$ and only nontraded goods in consumption, i.e. $\varepsilon = 0$. In this case model accounts for 40-60 percent of investment rate differences. This parametrization provides the upper bound for the investment rate differences that the model can potentially account for, given that $\gamma = 0.40$.

We also consider an alternative aggregation function for consumption goods. Stockman and Tesar (1995) report that the elasticity of substitution between traded and nontraded goods in consumption is 0.44 rather than unitary, so that instead of (2) consumption is aggregated through

$$F_C(c_{Tt}, c_{Nt}) = \left(\mu c_{Tt}^{\frac{\theta-1}{\theta}} + (1-\mu) c_{Nt}^{\frac{\theta-1}{\theta}} \right)^{\frac{\theta}{\theta-1}},$$

where $\theta = 0.44$ and μ is a weight parameter. With less than unitary elasticity of substitution between traded and nontraded goods in consumption the expenditure share on nontraded goods will be higher for model economies with higher relative prices of nontraded goods, i.e. the rich model economy. This is the case, since with $\theta < 1$ price increase is not fully offset by the decrease in quantity and, consequently, expenditure share increases.

The result that consumption expenditure share on nontraded goods is higher in countries with higher income levels agrees with the often reported observation (see e.g. Kravis (1982), p. 194) that the share of nontraded sector output in GDP is higher in OECD countries than in less developed countries.¹⁸ Weight parameter μ in this case is set so that in the rich model economy consumption expenditure share on nontraded goods is 0.25, as reported in Burstein et al.(2004).¹⁹ With this model specification the difference in nontraded expenditure share between consumption and investments, i.e. $\gamma - \varepsilon$, in the poor model economy is in fact smaller than in the case with Cobb-Douglas aggregator. Thus, not surprisingly, *international price* investment rate in the poor model

¹⁸To make this connection we (i) use the empirical result of our paper concerning constant investment expenditure shares on traded and nontraded goods, (ii) assume that trade balance across countries does not vary systematically with the income level. In this case all variation in nontraded sector output to GDP across countries is absorbed by consumption expenditures.

¹⁹We do not report the value of ε since in the CES setting it does not have any economic meaning. As in the case of unitary elasticity of substitution, with the CES functional form for consumption aggregation results in Figure 9 depend only on the ratios of the productivities, $\frac{A_T}{A_N} / \frac{\tilde{A}_T}{\tilde{A}_N}$. Results are independent of the level of productivity in traded and nontraded sectors, A_T and A_N . Change in the level of the productivity ratio, A_T/A_N , require a change in ε , but otherwise does not affect the results. See Appendix B.3 for details.

economy is higher than in any of the earlier model solutions.

For the sake of completeness, we also consider elasticities reported by two other empirical studies. Mendoza (1995) finds that in OECD countries $\theta_{rich} = 0.74$, while Ostry and Reinhart (1992) find that for some regions of less developed countries $\theta_{poor} = 1.3$. With such a model specification we allow the elasticity of substitution between traded and nontraded goods in consumption to differ between rich and poor model economies. As with the previous model specification, the weight μ is set to match consumption expenditure shares in the rich model economy. To avoid an assumption about the exact relationship between the intratemporal elasticity of substitution and income, results from this parametrization is not depicted in Figure 9. Comparing only a rich and a poor model economy we find that in this case model can account for 30-50 percent of investment rate differences. Note that under no CES parametrization can the model explain more than in the case of $\gamma = 0.40$ and $\varepsilon = 0$.

We conclude that the generalization of a growth model with traded investment goods and nontraded consumption goods to a case with traded and nontraded goods in both consumption and investments leads to no qualitative differences in model outcomes, as long as traded good expenditure share in investments exceeds traded good expenditure share in consumption. Empirically this appears to be a reasonable restriction for the more general model. At the same time, for quantitative results, the generalization considerably decreases model's ability to account for differences in international prices investment rates between developed economies and less developed countries. With reasonable parameter values the model can account for only around 10-40 percent of the interest rate differences, depending on the assumed parameter values.

Our results suggest that relative productivity differences between traded and nontraded goods cannot be the main cause for the differences in *international price* investment rates between rich and poor countries. The driving force behind this result is the empirical finding that nontraded goods play a dominant role in both consumption and investments.

5 Concluding remarks

Setting up a two-sector open economy growth model requires an assumption about the role of traded and nontraded goods in capital accumulation process. A common practice in the literature is to assume that only traded goods or only nontraded goods can be transformed into investments. In a survey of the topic Turnovsky (1997) concludes that 'no one assumption has gained a uniform acceptance', since these assumptions are

driven by mere convenience considerations rather than empirical facts. Furthermore, model results are often sensitive to the assumption used.

Although there is some variation across countries, we find that on average expenditures on nontraded and traded goods account for correspondingly 60 and 40 percent of all investment expenditures. Furthermore, investment expenditure shares on traded and nontraded goods have been close to constant over the last 50 years and exhibit a small positive correlation with the level of income. These results are particularly remarkable, given the large variation in relative prices across both time and income levels.

Our empirical results indicate that a considerably more realistic model outcomes can be produced with relatively little additional complexity. There are, in fact, several models in the literature that satisfy our empirical restriction, although the empirical motivation for the particular modeling choice has been missing. In this paper we have concentrated on the traded-nontraded nature of sectoral output, however, our results are also applicable to models that distinguish between equipment and structures in investments.

With our empirical restriction imposed on a two-sector small open economy growth model, only around 25 percent of the differences in *international price* investment rates between rich and poor countries can be attributed to differences in relative productivity between traded and nontraded sectors, i.e., Balassa-Samuelson effect. Thus, this effect is not the main cause for the differences in *international price* investment rates.

Our empirical results would also affect the transition dynamics in a two sector model. As Turnovsky (1997), Frenandez de Cordoba and Kehoe (2000) and, more recently, Burstein et al. (2004) have pointed out, an investment process with traded and nontraded goods in a two-sector open economy model can have the same effect as the standard investment adjustment costs and thus help to generate more plausible investment dynamics. We leave the investigation of such effects for future research.

References

- [1] Balassa, B., 1964, "The Purchasing-Power Parity Doctrine: A Reappraisal," *Journal of Political Economy*, 72, 584-596.
- [2] Brock, P., and S. Turnovsky, 1994, "Dependent Economy Model with Both Traded and Nontraded Capital Goods," *Review of International Economics*, 2, 306-325.

- [3] Burstein, A., J. Neves, and S. Rebelo, 2004, "Investment Prices and Exchange Rates: Some Basic Facts," *Journal of the European Economic Association*, 2 (2-3), 302-309.
- [4] De Gregorio, J., A. Giovannini, and H. Wolf, 1994, "International Evidence On Tradables and Nontradables Inflation," *European Economic Review*, 38, 1225-1244.
- [5] Fernandez de Cordoba, G., and T. Kehoe, 2000, "Capital Flows and Real Exchange Rate Fluctuations Following Spain's Entry into the European Community," *Journal of International Economics*, 51, 49-78.
- [6] Gollin, D., 2002, "Getting income shares right," *Journal of Political Economy*, vol.110, no.2, 458-474.
- [7] Gordon, R., 1990, **The Measurement of Durable Goods Prices**, University of Chicago Press, Chicago, IL.
- [8] Greenwood, J., Z. Hercowitz, and P. Krusell, 1997, "Long-Run Implications of Investment-Specific Technological Change," *American Economic Review*, 87, 342-362.
- [9] Heston, A., R. Summers, and B. Aten, 2002, **Penn World Table Version 6.1**, Center for International Comparisons at the University of Pennsylvania (CICUP), October.
- [10] Hsieh, C., and P. Klenow, 2003, "Relative Prices and Relative Prosperity", NBER Working Paper No.9701, May.
- [11] Jones, C., 1994, "Economic Growth and the Relative Price of Capital," *Journal of Monetary Economics*, 34, 359-382.
- [12] Laxton, D., and P. Pesenti, 2003, "Monetary Rules for Small, Open, Emerging Economics," *Journal of Monetary Economics*, 50, 1109-1146.
- [13] Eaton, A., and S. Kortum, 2001, "Trade in Capital Goods," *European Economic Review*, 45, 1195-1235.
- [14] Kravis, I., A. Heston, and R. Summers, 1982, **World Product and Income: International Comparisons and Real GDP**, Baltimore, MD: Johns Hopkins University Press.

- [15] Mendoza, E., 1995, "The Terms of Trade, the Real Exchange Rate, and Economic Fluctuations," *International Economic Review*, 36, 101-137.
- [16] Navaretti, G., I. Soloaga, and W. Takacs, 2000, "Vintage Technologies and Skill Constraints: Evidence from U.S. Exports of New and Used Machines," **World Bank Economic Review**, 14, 91-109.
- [17] Nehru, V., and A. Dhareshwar, 1993, "A New Database On Physical Capital Stock: Sources, Methodology and Results," *Revista de Analisis Economico*, Vol.8, No1, pp.37-59.
- [18] Organization for Economic Cooperation and Development, 2004, **National Accounts of OECD Countries** - Vol.1, Directorate of Science, Technology and Industry, OECD, Paris.
- [19] Organization for Economic Cooperation and Development, 2000a, **Input-Output Database: Sources and Methods**, Directorate of Science, Technology and Industry, OECD, Paris.
- [20] Organization for Economic Cooperation and Development, 2000b, **Input-Output Database: Country Notes**, Directorate of Science, Technology and Industry, OECD, Paris.
- [21] Ostry, J., and C. Reinhart, 1992, "Private Savings and Terms of Trade Shocks: Evidence from Developing Countries," IMF Staff Papers, Vol. 39, No. 3, September.
- [22] Parente, S., and E. Prescott, 2000, **Barriers to Riches**, MIT Press, Cambridge, Massachusetts.
- [23] Restuccia, D., and C. Urrutia, 2001, "Relative Prices and Investment Rates," *Journal of Monetary Economics*, 45, 93-121.
- [24] Samuelson, P., 1964, "Theoretical Notes on Trade Problems," *Review of Economics and Statistics*, 46, 145-154.
- [25] Stockman, A., and L. Tesar, 1995, "Tastes and Technology in a Two-Country Model of the Business Cycle: Explaining International Comovements," *American Economic Review*, 85, 168-185.
- [26] De Long B., and L. Summers, 1991, "Equipment Investment and Economic Growth," *Quarterly Journal of Economics*, 106, 445-502.

- [27] De Long B., and L., Summers, 1993, "How Strongly Do developing Economies Benefit from Equipment Investment?" *Journal of Monetary Economics*, 32, 395-415.
- [28] Summers, R., A., Heston, B. Aten, and D. Nuxoll, 1995, **Penn World Table 5.6**, Computer diskette, University of Pennsylvania.
- [29] Turnovsky, S., 1997, **International Macroeconomic Dynamics**, MIT Press, Cambridge, Massachusetts.
- [30] United Nations, 2001a, **National Accounts Statistics: Main Aggregates and Detailed Tables**, 1970-1997, Part I, New York, U.N. Publications Division.
- [31] United Nations, 2001b, **National Accounts Statistics: Main Aggregates and Detailed Tables**, 1950-1969, New York, U.N. Publications Division.
- [32] Whelan, K., 2003, "A Two-Sector Approach to Modeling U.S. NIPA Data," *Journal of Money, Credit and Banking*, 35, 627-656.

A Data issues

A.1 Estimates of the bias, due to investment expenditures on 'retail/wholesale trade' and 'real estate/business services'

A problem accompanying use of the more widely available national accounts is that the detailed fixed capital formation data cannot be directly mapped into investment expenditures on traded and nontraded goods. In national accounts all investment expenditures are divided in expenditures on producer durables (e.g. machinery, equipment) and structures (e.g. manufacturing buildings, residential buildings). Expenditures on output of nontraded sectors, other than construction are bundled together with either expenditures on construction or producer durables and can therefore lead to underestimation of the expenditure share of nontraded goods. In practice, around 98 percent of investment expenditures are accounted for if we add only two other nontraded sectors: retail/wholesale and real estate/business services.

To estimate the size of investment expenditures, which from 'traded-nontraded output' perspective are incorrectly booked in the NA GFCF data, we look at 42 input-output tables for 10 OECD countries. These tables cover period 1970-1990 (see OECD (2000a) for details). Data from input-output tables are compared with NA data for investment expenditures on producer durables and structures. Such comparative data is presented in presented in Table A1.

In Table A1 we should find that the weight for investment expenditures on nontraded goods from input-output data always exceeds the weight that is obtained from NA data. The size of the difference shows the bias in the NA data for a particular country and a particular year. In Table A1 for 3 out of 10 countries (Canada, France and Germany) the expected sign of the difference between weights in input-output and NA data is in fact not satisfied. This is probably caused by poor compatibility of data. In particular, the much greater detail of the input-output tables often means that it is not fully compatible with data that is gathered according to NA definitions (see OECD (2000a, 2000b) for a more detailed discussion)

Subject to such compatibility problems, we compare average differences for the 10 sample countries, presented in the last row of Table A1. In this case the sign of the difference is as expected and the size suggests that NA data underestimates the expenditure weight of nontraded goods by 0.040-0.059. There is no notable time trend in the size of the bias.

Similar estimate of the bias is obtained by comparing input-output table data in Burstein et al. (2004) with the corresponding weights in NA data. Results suggest a

bias of 0.042 (see Table A2).

A.2 Traded and nontraded intermediate inputs in production of structures and equipment

Although models with traded and nontraded goods usually do not model intermediate production sectors, in some cases it might be of interest to know the size of intermediate input of traded goods in the production of nontraded goods for investments and vice versa. The nontraded sector and construction in particular uses a lot of intermediate traded inputs and producers of investment goods in the traded sector use nontraded intermediate inputs, such as transportation. The actual size of these intermediate ‘cross inputs’ cannot be precisely estimated from the input output tables, since these tables do not differentiate between traded and nontraded intermediate inputs in sectoral production for investment and consumption purposes.

To get an estimate of the size of these ‘cross effects’, we calculate the fraction of traded intermediate inputs in the gross output of construction sector. The same fraction is also calculated for a subset of manufacturing sectors that makes up majority of traded investments. We do not look at this fraction for all traded and nontraded sectors, since for sectors that were left out most of the final use is consumption, not investments. It is likely that intermediate inputs are not equally important for these two components of final demand. The fractions that we obtain, expressed as ‘intermediate input/gross output’ are similar across OECD countries (see Table A3). The average size of traded intermediate input in construction is 31 percent of the gross output. Intermediate input of nontraded goods for the selected subset of manufacturing sector is 17 percent of gross output.

These estimates suggest that in a model with intermediate traded and nontraded inputs the weight of aggregate investment expenditures on nontraded goods should be lower than in a model without intermediate inputs. In particular, if the estimated investment expenditure share in Section 3 (adjusted for the bias discussed in A.1) is 0.60, then in a model with intermediate traded and nontraded goods, the same share is 0.48, obtained as $0.60 * (1 - 0.31) + 0.40 * 0.17 = 0.48$.

Table A1: Comparison of investment expenditures on nontraded goods in input-output tables and national accounts

Country	Data source\Period	Pre-1973	Mid/late-70s	Early-80s	Mid-80s	1990
Australia	input-output data	0.687	0.721		0.673	0.675
	NA data		0.530		0.500	0.520
	difference		0.191		0.173	0.155
Canada	input-output data	0.654	0.620	0.606	0.579	0.604
	NA data	0.710	0.690	0.660	0.650	0.650
	difference	-0.056	-0.070	-0.054	-0.071	-0.046
Denmark	input-output data	0.738	0.669	0.675	0.590	0.599
	NA data	0.680	0.610	0.600	0.500	0.500
	difference	0.058	0.059	0.075	0.090	0.099
France	input-output data	0.672	0.677	0.518	0.483	0.480
	NA data	0.580	0.580	0.560	0.530	0.480
	difference	0.092	0.097	-0.042	-0.047	0.000
Germany	input-output data		0.576	0.528	0.513	0.499
	NA data		0.600	0.560	0.550	0.540
	difference		-0.024	-0.032	-0.037	-0.041
Italy	input-output data			0.606		
	NA data			0.500		
	difference			0.106		
Japan	input-output data	0.636	0.723	0.733	0.659	0.687
	NA data	0.520	0.570	0.570	0.520	0.560
	difference	0.116	0.153	0.163	0.139	0.127
Netherlands	input-output data	0.674	0.653	0.672	0.577	
	NA data	0.640	0.620	0.630	0.520	
	difference	0.034	0.033	0.042	0.057	
UK	input-output data	0.570	0.526		0.561	0.599
	NA data		0.460		0.460	0.510
	difference		0.066		0.101	0.089
USA	input-output data	0.632	0.606	0.623	0.609	0.593
	NA data	0.620	0.580	0.560	0.550	0.520
	difference	0.012	0.026	0.063	0.059	0.073
Average	input-output	0.668	0.641	0.620	0.583	0.592
	national accounts	0.625	0.582	0.580	0.531	0.535
	difference	0.043	0.059	0.040	0.052	0.057

Data sources: For input-output table data see OECD (2000a), for national accounts data see OECD (2004). The exact years of comparison are reported in Table 1.

Table A2: Comparison of investment expenditures on nontraded goods in Burstein et al. (2004) and national accounts

Country	Burstein et al. (2004)	NA data*	Difference
Korea	0.601	0.666	-0.065
Mexico	0.635	0.502	0.133
Australia	0.627	0.491	0.136
Canada	0.596	0.649	-0.053
Chile	0.677	0.530	0.147
Denmark	0.587	0.457	0.130
Finland	0.564	0.524	0.040
France	0.562	0.485	0.077
Germany	0.546	0.640	-0.094
Greece	0.711	0.602	0.109
Italy	0.586	0.498	0.088
Japan	0.653	0.552	0.101
Netherlands	0.532	0.544	-0.012
Norway	0.458	0.653	-0.195
Spain	0.638	0.572	0.066
UK	0.481	0.427	0.054
US	0.527	0.470	0.057
Average	0.587	0.545	0.042

Data sources: Burnstein et al. (2004) and OECD (2004).

* OECD data complemented with UN data for Chile, Australia, Mexico and Korea.

Table A3: Intermediate 'cross inputs' in traded and nontraded investment goods, as a fraction of gross output

Country	Year	Nontraded into traded	Traded into nontraded
Australia	1989	0.15	0.35
Canada	1990	0.09	0.30
Denmark	1990	0.15	0.30
France	1990	0.23	0.29
Germany	1990	0.20	0.33
Italy	1985	0.18	0.34
Japan	1990	0.19	0.33
Netherlands	1986	0.12	0.30
UK	1990	0.19	0.22
US	1990	0.16	0.31
Average		0.17	0.31

Data source: OECD (2000a).

B Model with traded and nontraded goods in consumption and investments

B.1 Steady state solution of the model

The steady state solution of the model presented can be characterized by the following system of ten equations and ten unknowns

$$\left\{ \begin{array}{l} \frac{1-\varepsilon}{\varepsilon} \frac{c_T}{c_N} - p_N = 0 \\ q(1-\gamma)Gx_T^\gamma x_N^{-\gamma} - p_N = 0 \\ q\gamma Gx_T^{\gamma-1} x_N^{1-\gamma} - 1 = 0 \\ p_N \alpha A_N k_N^{\alpha-1} l_N^{(1-\alpha)} - q(r+\delta) = 0 \\ \alpha A_T k_T^{\alpha-1} l_T^{(1-\alpha)} - q(r+\delta) = 0 \\ Gx_T^\gamma x_N^{1-\gamma} - \delta(k_T + k_N) = 0 \\ A_T k_T^\alpha l_T^{(1-\alpha)} - c_T - x_T = 0 \\ A_N k_N^\alpha l_N^{(1-\alpha)} - c_N - x_N = 0 \\ p_N A_N k_N^\alpha l_N^{-\alpha} - A_T k_T^\alpha l_T^{-\alpha} = 0 \\ L - l_T - l_N = 0 \end{array} \right. \quad (9)$$

Note that in the steady state foreign asset position, b , is treated as exogenous and set equal to zero. L denotes the inelastic aggregate labor supply in the economy. To solve the system, we use equations 2,3,4,5 and 9 in (9) to solve for

$$\begin{aligned} \frac{x_T}{x_N} &= \frac{A_T}{A_N} \frac{\gamma}{(1-\gamma)}, \\ p_N &= \frac{A_T}{A_N}, \\ q &= \left(\frac{A_T}{A_N} \right)^{1-\gamma}, \\ \frac{k_T}{l_T} &= \frac{k_N}{l_N} = \left[\frac{\alpha}{r+\delta} A_T^\gamma A_N^{1-\gamma} \right]^{\frac{1}{1-\alpha}}, \end{aligned} \quad (10)$$

where without loss of generality we have set $G^{-1} = \gamma^\gamma (1-\gamma)^{1-\gamma}$.

Next, substituting the expressions in (10) back into the remaining equations in (9) we solve for other variables of interest. First, from equation 6 in (9) we can directly solve for

$$x_N = A_N (1-\gamma) L \frac{\delta \alpha}{r+\delta} \left[\frac{\alpha}{r+\delta} A_T^\gamma A_N^{1-\gamma} \right]^{\frac{\alpha}{1-\alpha}},$$

which combined with equation 1 in (10) implies that

$$x_T = A_T \gamma L \frac{\delta \alpha}{r + \delta} \left[\frac{\alpha}{r + \delta} A_T^\gamma A_N^{1-\gamma} \right]^{\frac{\alpha}{1-\alpha}}.$$

Equation 1,7,8 and 10 in (9) are then used to solve for

$$\begin{aligned} l_N &= L - L \left(\gamma \frac{\delta \alpha}{r + \delta} + \varepsilon \left[1 - \frac{\delta \alpha}{r + \delta} \right] \right), \\ l_T &= L \left(\gamma \frac{\delta \alpha}{r + \delta} + \varepsilon \left[1 - \frac{\delta \alpha}{r + \delta} \right] \right), \\ c_T &= A_T L \varepsilon \left(1 - \frac{\delta \alpha}{r + \delta} \right) \left[\frac{\alpha}{r + \delta} A_T^\gamma A_N^{1-\gamma} \right]^{\frac{\alpha}{1-\alpha}}, \\ c_N &= A_N L (1 - \varepsilon) \left(1 - \frac{\delta \alpha}{r + \delta} \right) \left[\frac{\alpha}{r + \delta} A_T^\gamma A_N^{1-\gamma} \right]^{\frac{\alpha}{1-\alpha}}, \end{aligned}$$

and substituting expressions for l_N and l_T into (10) we obtain

$$\begin{aligned} k_N &= L \left(1 - \left(\gamma \frac{\delta \alpha}{r + \delta} + \varepsilon \left[1 - \frac{\delta \alpha}{r + \delta} \right] \right) \right) \left[\frac{\alpha}{r + \delta} A_T^\gamma A_N^{1-\gamma} \right]^{\frac{1}{1-\alpha}}, \\ k_T &= L \left(\gamma \frac{\delta \alpha}{r + \delta} + \varepsilon \left[1 - \frac{\delta \alpha}{r + \delta} \right] \right) \left[\frac{\alpha}{r + \delta} A_T^\gamma A_N^{1-\gamma} \right]^{\frac{1}{1-\alpha}}. \end{aligned}$$

Finally, we solve for the steady state values of output and investments. Total output can be expressed as

$$\begin{aligned} Y &= x_T + c_T + p_N c_N + p_N x_N, \\ Y &= A_T L \left[\frac{\alpha}{r + \delta} A_T^\gamma A_N^{1-\gamma} \right]^{\frac{\alpha}{1-\alpha}}. \end{aligned}$$

Expressions for total investments is

$$\begin{aligned} I &= x_T + p_N x_N, \\ I &= A_T L \frac{\delta \alpha}{r + \delta} \left[\frac{\alpha}{r + \delta} A_T^\gamma A_N^{1-\gamma} \right]^{\frac{\alpha}{1-\alpha}}. \end{aligned}$$

Thus we have that in the steady state of the model investment rate is

$$\frac{I}{Y} = \frac{\delta \alpha}{r + \delta}$$

and investment expenditure shares on nontraded goods is

$$\frac{p_N x_N}{I} = (1 - \gamma).$$

It is also of interest to note here that in the steady state of the model total output is positively related to the sectoral productivity parameters

$$\begin{aligned} \frac{\partial Y}{\partial A_T} &= \frac{1 - \alpha(1 - \gamma)}{1 - \alpha} \frac{Y}{A_T} > 0, \\ \frac{\partial Y}{\partial A_N} &= \frac{\alpha(1 - \gamma)}{1 - \alpha} \frac{Y}{A_N} > 0. \end{aligned}$$

B.2 PPP comparisons for countries with different relative sectoral productivity, $\frac{A_T}{A_N}$

For PPP adjusted comparisons of model outcomes we keep prices fixed at $p_N^{PPP} = \tilde{A}_T / \tilde{A}_N$ and thus consider the effect of productivity changes on quantities only. The expression for PPP adjusted investments is

$$\begin{aligned} I^{PPP} &= x_T + p_N^{PPP} x_N, \\ I^{PPP} &= \left(A_T \gamma + \frac{\tilde{A}_T}{\tilde{A}_N} A_N (1 - \gamma) \right) L \frac{\delta \alpha}{r + \delta} \left[\frac{\alpha}{r + \delta} A_T^\gamma A_N^{1 - \gamma} \right]^{\frac{\alpha}{1 - \alpha}}. \end{aligned}$$

The ratio $\frac{p_N^{PPP} x_N}{I^{PPP}}$, which represents PPP adjusted expenditure share on nontraded goods, is

$$\frac{p_N^{PPP} x_N}{I^{PPP}} = \left(\frac{A_T}{A_N} \frac{\tilde{A}_N}{\tilde{A}_T} \frac{\gamma}{(1 - \gamma)} + 1 \right)^{-1}.$$

We are interested in the sign of

$$\frac{\partial \frac{p_N^{PPP} x_N}{I^{PPP}}}{\partial \frac{A_T}{A_N}} = - \frac{\frac{\tilde{A}_N}{\tilde{A}_T} \frac{\gamma}{(1 - \gamma)}}{\left(\frac{A_T}{A_N} \frac{\tilde{A}_N}{\tilde{A}_T} \frac{\gamma}{(1 - \gamma)} + 1 \right)^2},$$

which is negative.

Expression for PPP adjusted output is

$$Y^{PPP} = x_T + c_T + p_N^{PPP} c_N + p_N^{PPP} x_N,$$

$$Y^{PPP} = \left(\frac{\delta\alpha}{r+\delta} \left(A_T \gamma + \frac{\tilde{A}_T}{\tilde{A}_N} A_N (1-\gamma) \right) + \left(1 - \frac{\delta\alpha}{r+\delta} \right) \left(A_T \varepsilon + \frac{\tilde{A}_T}{\tilde{A}_N} A_N (1-\varepsilon) \right) \right) * \\ * L \left[\frac{\alpha}{r+\delta} A_T^\gamma A_N^{1-\gamma} \right]^{\frac{\alpha}{1-\alpha}}.$$

We are interested in the sign of the derivative of the PPP adjusted output with respect to sectoral productivity

$$\frac{\partial Y^{PPP}}{\partial A_T} = \frac{1-\alpha(1-\gamma)}{1-\alpha} \Psi_1 A_T^{\frac{\gamma\alpha}{1-\alpha}} A_N^{\frac{\alpha(1-\gamma)}{1-\alpha}} + \frac{\gamma\alpha}{1-\alpha} \Psi_2 A_T^{\frac{\gamma\alpha-1+\alpha}{1-\alpha}} A_N^{\frac{1-\alpha\gamma}{1-\alpha}} > 0$$

and

$$\frac{\partial Y^{PPP}}{\partial A_N} = \frac{\alpha(1-\gamma)}{1-\alpha} \Psi_1 A_T^{\frac{1-\alpha+\gamma\alpha}{1-\alpha}} A_N^{\frac{\alpha-\alpha\gamma-1+\alpha}{1-\alpha}} + \frac{1-\alpha\gamma}{1-\alpha} \Psi_2 A_T^{\frac{\gamma\alpha}{1-\alpha}} A_N^{\frac{\alpha-\alpha\gamma}{1-\alpha}} > 0,$$

where

$$\Psi_1 = \left(\gamma \frac{\delta\alpha}{r+\delta} + \varepsilon \left(1 - \frac{\delta\alpha}{r+\delta} \right) \right) \left(\frac{\alpha}{r+\delta} \right)^{\frac{\alpha}{1-\alpha}} L > 0,$$

$$\Psi_2 = \left((1-\gamma) \frac{\delta\alpha}{r+\delta} + (1-\varepsilon) \left(1 - \frac{\delta\alpha}{r+\delta} \right) \right) \left(\frac{\alpha}{r+\delta} \right)^{\frac{\alpha}{1-\alpha}} L \frac{\tilde{A}_T}{\tilde{A}_N} > 0.$$

PPP adjusted output is positively related to changes in either of the productivity parameters. With respect to changes in relative productivity, A_T/A_N , there is no clear relation, since it depends on the sign of the change in the level of A_T and A_N . For example, if only A_N or only A_T increases, then output will increase, but relative productivity in the two scenarios move in the opposite directions.

PPP adjusted investment ratio can be expressed as

$$\frac{I^{PPP}}{Y^{PPP}} = \frac{\frac{\alpha\delta}{r+\delta} \left[1 - \gamma \left(1 - \frac{A_T}{A_N} / \frac{\tilde{A}_T}{\tilde{A}_N} \right) \right]}{1 - \left[\gamma \frac{\alpha\delta}{r+\delta} + \varepsilon \left(1 - \frac{\alpha\delta}{r+\delta} \right) \right] \left(1 - \frac{A_T}{A_N} / \frac{\tilde{A}_T}{\tilde{A}_N} \right)}.$$

We are interested in the sign of

$$\frac{\partial \frac{I^{PPP}}{Y^{PPP}}}{\partial \frac{A_T}{A_N}} = \frac{(\gamma - \varepsilon) \frac{\delta \alpha}{r + \delta} \left(1 - \frac{\delta \alpha}{r + \delta}\right) \frac{\tilde{A}_T}{\tilde{A}_N}}{\left[1 - \left[\gamma \frac{\alpha \delta}{r + \delta} + \varepsilon \left(1 - \frac{\alpha \delta}{r + \delta}\right)\right] \left(1 - \frac{A_T}{A_N} / \frac{\tilde{A}_T}{\tilde{A}_N}\right)\right]^2},$$

which is positive if $\gamma > \varepsilon$ and negative if $\gamma < \varepsilon$.

B.3 CES aggregation in consumption

This is a simple extension of the model's steady state solution. Instead of the unitary elasticity of substitution for traded and nontraded goods in consumption, we now allow for a more general functional form

$$F_C(c_{Tt}, c_{Nt}) = \left(\mu c_{Tt}^{\frac{\theta-1}{\theta}} + (1 - \mu) c_{Nt}^{\frac{\theta-1}{\theta}} \right)^{\frac{\theta}{\theta-1}},$$

where θ represents the intratemporal elasticity of substitution and μ is a weight parameter. In this case all the steady state solutions above are still valid, subject to the following substitution

$$\varepsilon = \left(\left(\frac{A_T}{A_N} \right)^{1-\theta} \left(\frac{\mu}{1-\mu} \right)^\theta + 1 \right)^{-1}.$$

Table 1: Investment expenditures on output of different sectors of economic activity, as a fraction of total expenditures

Country	Sector of economic activity	Pre-1973	Mid/late-1970s	Early-1980s	Mid-1980s	1990	Country average
Australia	Manufacturing	0.31	0.27		0.32	0.27	0.29
	Construction	0.54	0.62		0.56	0.62	0.58
	Retail/wholesale trade	0.07	0.06		0.07	0.06	0.06
	Real est./bus. services	0.02	0.02		0.04	0.02	0.02
	Other	0.06	0.03		0.01	0.03	0.04
Canada	Manufacturing	0.34	0.38	0.39	0.42	0.39	0.38
	Construction	0.59	0.54	0.54	0.51	0.53	0.54
	Retail/wholesale trade	0.05	0.06	0.06	0.06	0.07	0.06
	Real est./bus. services	0.00	0.00	0.00	0.00	0.00	0.00
	Other	0.01	0.02	0.01	0.01	0.01	0.01
Denmark	Manufacturing	0.26	0.33	0.33	0.41	0.40	0.35
	Construction	0.67	0.60	0.60	0.49	0.50	0.57
	Retail/wholesale trade	0.05	0.05	0.06	0.07	0.07	0.06
	Real est./bus. services	0.02	0.02	0.02	0.02	0.03	0.02
	Other	0.00	0.00	0.00	0.00	0.00	0.00
France	Manufacturing	0.32	0.32	0.48	0.51	0.51	0.43
	Construction	0.61	0.61	0.47	0.44	0.43	0.51
	Retail/wholesale trade	0.03	0.03	0.03	0.03	0.03	0.03
	Real est./bus. services	0.00	0.00	0.01	0.01	0.01	0.01
	Other	0.04	0.04	0.01	0.00	0.01	0.02
Germany	Manufacturing		0.42	0.47	0.49	0.50	0.47
	Construction		0.49	0.46	0.44	0.43	0.45
	Retail/wholesale trade		0.05	0.03	0.03	0.03	0.04
	Real est./bus. services		0.03	0.03	0.03	0.03	0.03
	Other		0.00	0.01	0.01	0.01	0.01
Italy	Manufacturing			0.39			0.39
	Construction			0.52			0.52
	Retail/wholesale trade			0.05			0.05
	Real est./bus. services			0.02			0.02
	Other			0.02			0.02
Japan	Manufacturing	0.36	0.28	0.26	0.34	0.31	0.31
	Construction	0.57	0.66	0.67	0.59	0.59	0.62
	Retail/wholesale trade	0.07	0.06	0.06	0.06	0.08	0.06
	Real est./bus. services	0.00	0.00	0.00	0.00	0.01	0.00
	Other	0.01	0.01	0.01	0.01	0.01	0.01
Netherlands	Manufacturing	0.32	0.34	0.32	0.42		0.35
	Construction	0.54	0.49	0.51	0.41		0.49
	Retail/wholesale trade	0.06	0.06	0.06	0.08		0.06
	Real est./bus. services	0.05	0.08	0.07	0.07		0.07
	Other	0.03	0.03	0.03	0.02		0.03
UK	Manufacturing	0.43	0.47		0.44	0.40	0.43
	Construction	0.46	0.38		0.48	0.47	0.45
	Retail/wholesale trade	0.01	0.04		0.02	0.04	0.03
	Real est./bus. services	0.06	0.05		0.05	0.08	0.06
	Other	0.04	0.05		0.02	0.01	0.03
USA	Manufacturing	0.37	0.39	0.37	0.39	0.39	0.38
	Construction	0.54	0.48	0.52	0.50	0.46	0.50
	Retail/wholesale trade	0.05	0.08	0.07	0.07	0.07	0.07
	Real est./bus. services	0.02	0.03	0.02	0.02	0.04	0.03
	Other	0.02	0.02	0.02	0.02	0.04	0.02
Period average	Manufacturing	0.34	0.36	0.38	0.41	0.40	0.38
	Construction	0.56	0.54	0.54	0.49	0.50	0.52
	Retail/wholesale trade	0.05	0.05	0.05	0.06	0.06	0.05
	Real est./bus. services	0.02	0.02	0.02	0.03	0.03	0.03
	Other	0.03	0.02	0.01	0.01	0.01	0.02

Data source: OECD (2000a). The exact years of coverage for each country are: Australia - 1968, 1974, 1986, 1989; Canada - 1971, 1976, 1981, 1986, 1990; Denmark - 1972, 1977, 1980, 1985, 1990; France - 1972, 1977, 1980, 1985, 1990; Germany - 1978, 1986, 1988, 1990; Italy - 1985; Japan - 1970, 1975, 1980, 1985, 1990; Netherlands - 1972, 1977, 1981, 1986; UK - 1968, 1979, 1984, 1990; United States - 1972, 1977, 1982, 1985, 1990.

Table 2: Investment expenditures on nontraded goods, as a fraction of total expenditures (OECD data, 1970-2002)

Country	Coverage	Number of obs.	Mean	Standard deviation	Max	Min	Max-Min
AUSTRIA	1976-2002	27	0.585	0.020	0.62	0.56	0.06
CANADA	1981-2002	22	0.689	0.033	0.72	0.63	0.10
DENMARK	1970-2002	33	0.570	0.059	0.69	0.49	0.20
FINLAND	1970-2002	33	0.619	0.025	0.67	0.57	0.10
FRANCE	1978-2002	25	0.590	0.033	0.65	0.54	0.10
GERMANY	1970-2002	33	0.613	0.032	0.67	0.55	0.12
GREECE	1995-2002	8	0.620	0.027	0.67	0.59	0.08
ICELAND	1990-2002	13	0.647	0.042	0.71	0.56	0.15
IRELAND	1990-2002	13	0.629	0.047	0.72	0.56	0.17
ITALY	1970-2002	33	0.523	0.035	0.59	0.46	0.13
JAPAN	1990-2001	12	0.598	0.019	0.64	0.58	0.06
LUXEMBOURG	1986-2002	17	0.560	0.040	0.62	0.51	0.11
NETHERLANDS	1970-2002	33	0.625	0.036	0.69	0.56	0.13
NEW ZEALAND	1971-2001	31	0.539	0.036	0.59	0.47	0.13
NORWAY	1970-2002	33	0.665	0.048	0.76	0.55	0.20
PORTUGAL	1988-2002	15	0.578	0.028	0.62	0.52	0.10
SPAIN	1980-2002	23	0.635	0.034	0.70	0.58	0.12
SWEDEN	1993-2002	10	0.463	0.050	0.57	0.40	0.17
SWITZERLAND	1990-2001	12	0.561	0.033	0.61	0.51	0.09
UNITED KINGDOM	1970-2002	33	0.511	0.027	0.57	0.46	0.11
UNITED STATES	1970-2002	33	0.588	0.030	0.65	0.54	0.12
Average			0.591	0.035	0.654	0.533	0.121

Data source: OECD (2004).

Table 3: Investment expenditures on nontraded goods, as a fraction of total expenditures (UN data, 1950-1997)

Country	Coverage	Number of obs.	Mean	Standard deviation	Max	Min	Max-Min
Algeria	1970-83	14	0.536	0.048	0.63	0.46	0.17
Angola	1985-90	6	0.453	0.032	0.50	0.40	0.10
Australia	1959-96	38	0.535	0.021	0.60	0.49	0.11
Austria	1954-96	43	0.540	0.024	0.58	0.47	0.11
Azerbaijan	1994-96	3	0.732	0.046	0.76	0.68	0.08
Bahamas	1989-92	4	0.343	0.007	0.35	0.33	0.02
Bangladesh	1972-87	16	0.633	0.076	0.79	0.52	0.27
Belgium	1960-97	38	0.592	0.050	0.68	0.49	0.18
Bermuda	1979-92	14	0.524	0.055	0.66	0.42	0.24
Bhutan	1980-96	17	0.576	0.132	0.79	0.40	0.39
Bolivia	1960-69, 88-92	15	0.484	0.071	0.61	0.36	0.24
Botswana	1971,73-89,91-91	20	0.556	0.107	0.73	0.42	0.31
Brazil	1980-84	10	0.680	0.025	0.72	0.64	0.08
Brunei Darussalam	1974-84	11	0.833	0.065	0.92	0.74	0.19
Cambodia	1993-96	4	0.726	0.075	0.83	0.66	0.17
Cameroon	1971-88	18	0.557	0.053	0.69	0.48	0.20
Canada	1950-97	48	0.680	0.025	0.73	0.63	0.11
Cape Verde	1980-89	10	0.657	0.035	0.70	0.59	0.11

Table 3: continued

Country	Coverage	Number of obs.	Mean	Standard deviation	Max	Min	Max-Min
Chile	1974-96	23	0.568	0.070	0.74	0.47	0.28
Hong Kong	1961-97	37	0.395	0.041	0.50	0.30	0.20
Colombia	1960-95	36	0.575	0.041	0.66	0.49	0.17
Cote d'Ivoire	1970-82	13	0.639	0.041	0.71	0.58	0.13
Croatia	1994-96	3	0.590	0.026	0.62	0.57	0.05
Cyprus	1960-96	37	0.649	0.059	0.74	0.53	0.21
Czech Republic	1987-91	5	0.587	0.035	0.63	0.55	0.08
Denmark	1966-95	30	0.603	0.066	0.70	0.49	0.20
Dominica	1971,73,78-91	16	0.518	0.092	0.68	0.39	0.29
Ecuador	1970-93	24	0.546	0.073	0.68	0.42	0.25
Egypt	1960-79	20	0.460	0.031	0.51	0.42	0.09
El Salvador	1963-89	27	0.442	0.061	0.60	0.35	0.24
Equatorial Guinea	1985-91	7	0.429	0.121	0.64	0.29	0.35
Ethiopia [up to 1993]	1970-75	6	0.675	0.019	0.71	0.65	0.05
Fiji	1970-72	3	0.544	0.022	0.57	0.52	0.04
Finland	1960-96	37	0.623	0.028	0.68	0.55	0.13
France	1970-97	28	0.587	0.035	0.65	0.54	0.11
Gabon	1974	1	0.633		0.63	0.63	0.00
Gambia	1970-71,74,93	22	0.645	0.132	0.86	0.38	0.49
Germany	1991-97	7	0.609	0.041	0.64	0.53	0.11
Federal Republic of Germany	1960-94	35	0.610	0.035	0.66	0.53	0.13
Ghana	1955-85	31	0.682	0.060	0.81	0.57	0.24
Greece	1960-95	36	0.626	0.050	0.72	0.53	0.19
Guadeloupe	1965-69	5	0.658	0.029	0.70	0.63	0.07
Guatemala	1950-96	48	0.412	0.115	0.67	0.26	0.41
Iceland	1960-96	37	0.719	0.045	0.82	0.62	0.20
India	1950-96	47	0.561	0.078	0.75	0.42	0.33
Iran (Islamic Republic of)	1965-95	31	0.672	0.091	0.84	0.50	0.34
Iraq	1970-75,87-89	9	0.644	0.087	0.78	0.55	0.23
Ireland	1970-96	27	0.533	0.047	0.64	0.45	0.19
Israel	1950-97	48	0.611	0.089	0.83	0.43	0.39
Italy	1960-97	38	0.558	0.047	0.65	0.48	0.17
Jamaica	1974-90	17	0.518	0.050	0.63	0.43	0.20
Japan	1970-96	27	0.631	0.030	0.67	0.57	0.11
Jordan	1959-96	38	0.698	0.086	0.87	0.51	0.36
Kazakhstan	1990-96	7	0.894	0.048	0.93	0.82	0.12
Kenya	1970-95	26	0.473	0.073	0.59	0.24	0.34
Kuwait	1970-81	12	0.555	0.098	0.68	0.37	0.31
Kyrgyzstan	1990-96	7	0.967	0.027	0.99	0.91	0.08
Lesotho	1964-96	32	0.655	0.125	0.89	0.45	0.44
Libyan Arab Jamahiriya	1971-79	9	0.666	0.016	0.69	0.64	0.05
Luxembourg	1970-79	10	0.641	0.051	0.72	0.58	0.15
Malawi	1970-72	3	0.443	0.044	0.49	0.41	0.08
Malaysia	1960-71,73,78,83	15	0.630	0.080	0.72	0.51	0.21
Malta	1970-97	28	0.372	0.079	0.57	0.27	0.31
Mauritius	1970-97	28	0.573	0.070	0.70	0.40	0.29
Mexico	1970-96	27	0.554	0.033	0.60	0.49	0.11
Montserrat	1975-86	12	0.598	0.075	0.74	0.49	0.25
Morocco	1960-69	10	0.597	0.026	0.64	0.55	0.09
Namibia	1987-96	10	0.630	0.056	0.72	0.52	0.20
Nepal	1977-81	5	0.755	0.033	0.79	0.71	0.08
Netherlands	1969-97	29	0.568	0.039	0.64	0.51	0.13
New Zealand	1971-96	26	0.534	0.037	0.59	0.47	0.13

Table 3: continued

Country	Coverage	Number of obs.	Mean	Standard deviation	Max	Min	Max-Min
Nicaragua	1970-78	9	0.426	0.045	0.50	0.37	0.12
Nigeria	1974-94	21	0.521	0.171	0.75	0.21	0.53
Norway	1960-96	37	0.586	0.056	0.66	0.47	0.19
Oman	1981-95	15	0.788	0.052	0.86	0.68	0.18
Pakistan	1975-89	15	0.498	0.073	0.64	0.43	0.22
Panama	1950-79	30	0.580	0.047	0.66	0.49	0.17
Paraguay	1962-94	33	0.538	0.086	0.78	0.43	0.35
Peru	1970-97	28	0.639	0.093	0.78	0.48	0.30
Philippines	1950-97	48	0.537	0.083	0.71	0.37	0.34
Portugal	1970-95	25	0.526	0.050	0.65	0.45	0.20
Puerto Rico	1950-96	47	0.631	0.072	0.76	0.50	0.26
Republic of Korea	1960-97	38	0.591	0.057	0.69	0.50	0.19
Saint Kitts and Nevis	1973,75	2	0.340	0.045	0.37	0.31	0.06
Saint Vincent and the Grenadines	1977-97	21	0.663	0.072	0.77	0.49	0.28
Saudi Arabia	1963-97	16	0.743	0.031	0.83	0.71	0.11
Seychelles	1976-90	15	0.506	0.114	0.64	0.27	0.36
Sierra Leone	1970-90	21	0.554	0.067	0.70	0.41	0.29
Singapore	1970-97	28	0.474	0.075	0.63	0.39	0.24
Slovenia	1990-95	6	0.463	0.048	0.54	0.42	0.13
South Africa	1963-97	48	0.528	0.057	0.60	0.39	0.22
Spain	1980-96	17	0.672	0.028	0.73	0.63	0.10
Sri Lanka	1963-97	35	0.607	0.086	0.74	0.41	0.33
Sudan	1970-83	14	0.456	0.100	0.66	0.31	0.35
Suriname	1975-94	20	0.570	0.100	0.76	0.36	0.40
Sweden	1970-96	27	0.583	0.051	0.67	0.46	0.21
Switzerland	1950-96	47	0.609	0.046	0.68	0.53	0.15
Syrian Arab Republic	1963-97	35	0.591	0.111	0.81	0.40	0.41
Thailand	1960-96	37	0.517	0.055	0.60	0.40	0.20
Togo	1970-72	3	0.542	0.044	0.59	0.50	0.09
Tonga	1975-83	9	0.655	0.069	0.77	0.57	0.20
Trinidad and Tobago	1966-94	29	0.414	0.091	0.63	0.27	0.36
Tunisia	1962-69	8	0.650	0.030	0.71	0.62	0.09
Turkey	1960-97	38	0.613	0.064	0.75	0.50	0.25
Uganda	1970-76,81-95	22	0.617	0.060	0.73	0.47	0.26
United Kingdom	1963-96	34	0.537	0.021	0.59	0.50	0.09
United Republic of Tanzania	1970-94	25	0.412	0.141	0.67	0.20	0.47
United States	1960-97	38	0.587	0.040	0.66	0.52	0.15
Uruguay	1966-89	24	0.690	0.076	0.82	0.58	0.24
Venezuela	1970-95	26	0.556	0.035	0.64	0.49	0.15
Yugoslavia	1974	1	0.744		0.74	0.74	0.00
Zambia	1970-91	22	0.408	0.095	0.52	0.22	0.29
Zimbabwe	1970-89	20	0.524	0.079	0.63	0.34	0.30

Data source: UN (2001a, b).

Table 4: Time trends in investment expenditures on nontraded goods for sample countries with at least 30 years for data*

Country	Coverage	# of obs.	Time trend, per decade	Newey-West standard error	t-statistic	P> t	Lower 95%	Upper 95 %
Panel 1: OECD data								
Denmark	1970-2002	33	-0.053	0.010	-5.97	0.000	-0.07	-0.03
Finland	1970-2002	33	0.002	0.007	0.27	0.797	-0.01	0.02
Germany	1970-2002	33	-0.009	0.008	-1.16	0.254	-0.02	0.01
Italy	1970-2002	33	-0.025	0.007	-3.38	0.002	-0.04	-0.01
Netherlands	1970-2002	33	-0.019	0.008	-2.50	0.018	-0.04	0.00
New Zealand	1971-2001	31	-0.006	0.006	-0.97	0.340	-0.02	0.01
Norway	1970-2002	33	0.030	0.012	2.61	0.014	0.01	0.06
United Kingdom	1970-2002	33	-0.011	0.007	-1.71	0.098	-0.02	0.00
United States	1970-2002	33	-0.027	0.005	-5.16	0.000	-0.04	-0.02
Panel 2: UN data, OECD countries								
Australia	1959-1996	38	-0.006	0.004	-1.42	0.17	-0.01	0.00
Austria	1954-1996	43	0.015	0.005	2.83	0.01	0.00	0.03
Belgium	1960-1997	38	-0.026	0.010	-2.55	0.02	-0.05	-0.01
Canada	1950-1997	48	-0.009	0.005	-1.73	0.09	-0.02	0.00
Denmark	1966-1995	30	-0.070	0.007	-10.32	0.00	-0.08	-0.06
Finland	1960-1996	37	-0.008	0.008	-1.06	0.30	-0.02	0.01
Fed. Rep. of Germany	1960-1994	35	-0.025	0.007	-3.53	0.00	-0.04	-0.01
Greece	1960-1995	36	-0.043	0.003	-15.70	0.00	-0.05	-0.04
Iceland	1960-1996	37	-0.009	0.008	-1.08	0.29	-0.03	0.01
Italy	1960-1997	38	-0.032	0.009	-3.79	0.00	-0.05	-0.02
Norway	1960-1996	35	0.046	0.009	5.00	0.00	0.03	0.06
Republic of Korea	1960-1997	38	-0.004	0.015	-0.25	0.81	-0.03	0.03
Switzerland	1950-1996	47	-0.022	0.006	-3.72	0.00	-0.03	-0.01
Turkey	1960-1997	38	-0.018	0.012	-1.42	0.17	-0.04	0.01
United Kingdom	1963-1996	34	-0.003	0.005	-0.73	0.47	-0.01	0.01
United States	1960-1997	38	-0.034	0.003	-11.47	0.00	-0.04	-0.03
Panel 3: UN data, non-OECD countries								
Hong Kong	1961-1997	37	0.000	0.006	-0.05	0.96	-0.02	0.02
Colombia	1960-1995	36	-0.022	0.005	-3.37	0.00	-0.03	-0.01
Cyprus	1960-1996	37	0.041	0.006	7.32	0.00	0.03	0.05
Ghana	1955-1985	31	-0.013	0.013	-0.86	0.40	-0.05	0.02
Guatemala	1950-1996	47	-0.065	0.007	-5.07	0.00	-0.09	-0.04
India	1950-1996	47	-0.053	0.003	-12.34	0.00	-0.06	-0.04
Islamic Rep. of Iran	1965-1995	31	0.006	0.020	0.19	0.85	-0.06	0.08
Israel	1950-1997	48	-0.052	0.006	-5.09	0.00	-0.07	-0.03
Jordan	1959-1996	38	0.007	0.011	0.39	0.70	-0.03	0.04
Lesotho	1964-1996	32	0.093	0.021	4.36	0.00	0.05	0.14
Panama	1950-1979	30	0.000	0.009	0.03	0.98	-0.03	0.03
Paraguay	1962-1994	33	0.040	0.014	2.01	0.05	0.00	0.08
Philippines	1950-1997	48	-0.032	0.006	-3.11	0.00	-0.05	-0.01
Puerto Rico	1950-1996	47	-0.037	0.005	-3.50	0.00	-0.06	-0.02
South Africa	1963-1997	48	-0.036	0.003	-6.93	0.00	-0.05	-0.03
Sri Lanka	1963-1997	35	-0.059	0.006	-6.95	0.00	-0.08	-0.04
Syrian Arab Republic	1963-1997	35	-0.003	0.017	-0.10	0.92	-0.07	0.06
Thailand	1960-1996	37	-0.009	0.007	-0.71	0.48	-0.03	0.02
Uruguay	1966-1989	30	0.061	0.030	1.43	0.16	-0.03	0.15

Data sources: OECD (2004), UN (2001a, b).

* The time trend reports the estimate of 10β from the regression: $\gamma_t = \alpha + \beta t + \varepsilon_t$, where t denotes years. The test statistic is a t-statistic corresponding to Newey-West corrected standard error and tests $\beta=0$. Note that the slope of expenditure shares is multiplied by 10 and should therefore be interpreted as a change in expenditure share over a decade. The N-W standard error and 95% bounds are also multiplied by 10.

Table 5: Pooled time trends for sample countries with at least 30 years for data*

Type of regression	Sample	# of obs.	Time trend, per decade	Standard error	t-statistic	Lower 95%	Upper 95 %
Panel 1: OECD data							
Pooled OLS	OECD countries	295	-0.013	0.004	-3.60	0.021	0.006
Panel with country dummies	OECD countries	295	-0.013	0.002	-6.04	0.018	0.009
Panel 2: UN data							
Pooled OLS	all countries	1335	-0.014	0.002	-6.65	0.019	0.010
	OECD countries	610	-0.014	0.002	-6.26	0.019	0.010
	Non-OECD countries	725	-0.016	0.003	-4.65	0.023	0.009
Panel with country dummies	all countries	1335	-0.017	0.002	10.81	0.020	0.014
	OECD countries	610	-0.012	0.001	-8.37	0.015	0.010
	Non-OECD countries	725	-0.020	0.003	-7.96	0.025	0.015

Data sources: OECD (2004), UN (2001a, b).

* See notes to Table 4. In case of country dummies, the time trend reports the estimate of 10β from the regression: $\gamma_t = \alpha + \beta t + d_i + \varepsilon_t$, where d_i is a country dummy.

Table 6: Correlation between nontraded expenditure shares

# of countries included	Period	1950-59	1960-69	1970-79	1980-89	1990-97
13	1950-59	1				
44	1960-69	0.649	1			
91	1970-79	0.452	0.863	1		
91	1980-89	0.527	0.555	0.643	1	
80	1990-97	0.307	0.630	0.492	0.735	1

Data sources: UN (2001a, b).

Table 7: Cross-section comparison of investment expenditures on nontraded goods (UN data)

Year	# of countries included	Mean	Corr with real income per capita
1950	9	0.68	-0.31
1951	9	0.68	-0.13
1952	9	0.65	-0.21
1953	9	0.64	-0.12
1954	10	0.62	0.22
1955	11	0.63	0.15
1956	11	0.63	0.15
1957	11	0.62	0.14
1958	11	0.62	0.10
1959	13	0.61	0.04
1960	30	0.60	0.07
1961	31	0.60	0.12
1962	33	0.60	0.09
1963	37	0.60	0.06
1964	38	0.60	0.07
1965	40	0.60	0.10
1966	42	0.60	0.14
1967	43	0.59	0.14
1968	43	0.59	0.18
1969	44	0.58	0.27
1970	71	0.56	0.28
1971	76	0.56	0.32
1972	73	0.58	0.26
1973	74	0.58	0.23
1974	77	0.59	0.19
1975	81	0.57	0.28
1976	78	0.57	0.25
1977	79	0.57	0.19
1978	81	0.56	0.30
1979	80	0.58	0.24
1980	80	0.59	0.08
1981	82	0.60	-0.01
1982	80	0.60	-0.03
1983	80	0.60	0.01
1984	76	0.58	0.06
1985	77	0.57	0.02
1986	76	0.55	0.14
1987	79	0.55	0.18
1988	79	0.54	0.15
1989	79	0.54	0.13
1990	74	0.54	0.26
1991	72	0.55	0.16
1992	68	0.56	0.16
1993	65	0.57	0.11
1994	66	0.56	0.00
1995	59	0.57	-0.15
1996	48	0.58	-0.23
1997	21	0.52	0.08

Data sources: UN (2001a, b).

Table 8: Cross-section comparison of investment expenditures on nontraded goods (PWT benchmark data)

Data set	# of countries included	Mean	Correlation with real income per capita
PWT 1996 benchmark*	115	0.51	0.12
-only A,B	33	0.56	0.03
-only A	18	0.56	0.10
Nehru-Dhareshwar dataset, 1987	42	0.56	0.13
PWT 1985 benchmark	65	0.56	0.04
PWT 1980 benchmark	60	0.58	0.31
PWT 1975 benchmark	34	0.57	0.53
PWT 1970 benchmark	16	0.56	0.13

* A,B,C and D refer to data quality, with A representing the highest and D the lowest quality. See Penn World Table 6.1 benchmark for details.

Table 9: Investment expenditure share on nontraded goods by region, (PWT 1996 benchmark data)

Region	# of countries included	Mean	Correlation with real income per capita
Western Europe and North America*	25	0.56	-0.02
Africa	22	0.23	0.00
-Africa, PWT 1985	22	0.54	-0.10
-Africa, PWT 1980	15	0.57	0.29
Eastern and Central Europe	14	0.54	0.54
Asia	12	0.59	0.19
Oceania	12	0.51	0.12
Former Soviet Union, excl. Baltics	12	0.66	0.32
Latin America	10	0.57	-0.26
Middle East	8	0.57	0.57

* Also includes Japan, Australia and New Zealand.

Table 10: Investment expenditure share on nontraded goods by region (UN data)

Year	Africa			Europe			Latin America			South East Asia		
	# of countries included	Mean	Corr. with real GDP per capita	# of countries included	Mean	Corr. with real GDP per capita	# of countries included	Mean	Corr. with real GDP per capita	# of countries included	Mean	Corr. with real GDP per capita
1960	4	0.56	0.18	10	0.60	-0.30	4	0.54	0.00	4	0.63	0.15
1961	4	0.59	-0.06	10	0.60	-0.24	4	0.51	0.45	5	0.58	-0.67
1962	5	0.63	-0.26	10	0.60	-0.24	5	0.50	0.43	5	0.58	-0.68
1963	5	0.60	-0.32	11	0.60	-0.29	6	0.51	-0.31	6	0.60	-0.66
1964	6	0.61	-0.49	11	0.62	-0.34	6	0.49	-0.43	6	0.60	-0.66
1965	6	0.59	-0.43	11	0.63	-0.29	6	0.46	-0.25	6	0.61	-0.69
1966	5	0.59	-0.19	12	0.63	-0.14	7	0.54	0.76	6	0.57	-0.67
1967	6	0.61	-0.27	12	0.63	-0.17	7	0.52	0.30	6	0.57	-0.67
1968	6	0.59	-0.24	12	0.64	-0.26	7	0.51	0.65	6	0.55	-0.76
1969	6	0.58	0.15	13	0.64	-0.23	7	0.51	0.35	6	0.52	-0.86
1970	17	0.53	0.15	18	0.61	0.15	11	0.53	0.20	8	0.51	-0.20
1971	19	0.54	0.14	18	0.60	0.47	11	0.54	0.27	8	0.50	-0.10
1972	17	0.54	0.15	18	0.61	0.46	11	0.54	0.47	8	0.54	-0.27
1973	16	0.59	-0.29	18	0.61	0.68	11	0.53	0.58	9	0.53	-0.18
1974	19	0.58	-0.14	18	0.62	0.54	12	0.55	0.55	9	0.57	-0.17
1975	18	0.55	-0.18	18	0.62	0.44	13	0.51	0.51	9	0.56	-0.09
1976	17	0.56	-0.20	17	0.61	0.57	13	0.52	0.41	9	0.57	-0.18
1977	16	0.56	-0.16	18	0.60	0.43	13	0.51	0.28	10	0.59	-0.30
1978	16	0.52	-0.02	18	0.61	0.25	13	0.51	0.44	11	0.56	-0.16
1979	16	0.55	-0.06	18	0.61	0.55	12	0.55	0.57	10	0.56	-0.19
1980	15	0.58	-0.14	18	0.61	0.14	12	0.58	0.62	11	0.60	-0.34
1981	16	0.58	-0.36	18	0.60	0.23	12	0.58	0.48	11	0.62	-0.42
1982	16	0.60	-0.31	18	0.59	0.41	12	0.61	0.37	10	0.62	-0.18
1983	15	0.58	-0.20	18	0.59	0.30	12	0.63	0.08	11	0.63	0.20
1984	13	0.54	-0.27	18	0.58	0.22	12	0.60	0.39	10	0.64	-0.33
1985	15	0.54	-0.17	18	0.57	0.04	12	0.60	0.35	9	0.57	-0.19
1986	14	0.48	0.05	18	0.56	0.21	12	0.56	0.55	9	0.54	-0.22
1987	15	0.48	0.28	19	0.56	0.08	12	0.55	0.59	9	0.53	-0.38
1988	15	0.49	0.23	19	0.56	-0.03	13	0.54	0.39	8	0.50	-0.34
1989	14	0.49	0.13	19	0.56	-0.13	13	0.54	0.27	8	0.52	-0.40
1990	12	0.46	0.17	20	0.57	-0.13	10	0.51	0.10	8	0.52	-0.36
1991	11	0.51	0.22	21	0.57	-0.12	10	0.53	0.07	8	0.51	-0.10
1992	9	0.50	0.15	20	0.58	-0.21	10	0.53	0.06	8	0.51	-0.09
1993	8	0.49	0.11	20	0.58	0.19	9	0.56	0.13	9	0.54	-0.32
1994	7	0.49	0.08	22	0.58	0.07	8	0.54	0.07	9	0.53	-0.16
1995	5	0.56	-0.32	20	0.56	0.10	6	0.53	0.06	9	0.53	-0.21
1996	3	0.63		16	0.57	-0.15	4	0.53	0.06	9	0.53	-0.03
1997	1	0.40		6	0.54	0.24	2	0.52		5	0.51	0.01

Data sources: UN (2001a, b).

Table 11: Investment expenditures on nontraded goods in OECD countries (OECD data)

Year	# of countries included	Mean	Corr. with real income per capita
1970	8	0.60	0.56
1971	9	0.60	0.66
1972	9	0.61	0.62
1973	9	0.61	0.56
1974	9	0.61	0.43
1975	9	0.61	0.52
1976	10	0.60	0.60
1977	10	0.59	0.49
1978	11	0.60	0.30
1979	11	0.59	0.43
1980	12	0.60	0.34
1981	13	0.60	0.43
1982	13	0.60	0.38
1983	13	0.60	0.43
1984	13	0.60	0.41
1985	13	0.58	0.47
1986	14	0.58	0.25
1987	14	0.58	0.37
1988	15	0.58	0.35
1989	15	0.57	0.16
1990	19	0.59	0.20
1991	19	0.59	-0.11
1992	19	0.61	0.11
1993	20	0.61	-0.07
1994	20	0.60	0.03
1995	21	0.59	-0.09
1996	21	0.59	-0.06
1997	21	0.58	-0.20
1998	21	0.57	-0.07
1999	21	0.57	-0.18
2000	21	0.57	0.06
2001	21	0.58	
2002	18	0.61	

Data source: OECD (2004).

Table 12: Comparison of investment expenditures on nontraded goods with estimates in Burstein et al. (2004)

Country	Year	Real GDP/capita	Burstein et al. (2003), construction	Burstein et al. (2003), all nontraded	UN data	OECD data	PWT 1996 benchmark data
Korea	1993	11940	0.540	0.601	0.666		0.646
Mexico	1990	7429	0.485	0.635	0.502		0.516
Brazil	1999	6909	0.674				0.669
Argentina	1997	11349	0.542	0.638			0.635
Australia	1995	22164	0.500	0.627	0.491		0.513
Canada	1990	22427	0.526	0.596	0.667	0.649	0.624
Chile	1996	8972	0.596	0.677	0.530		0.510
Denmark	1998	25495	0.457	0.587		0.457	0.448
Finland	1995	18852	0.458	0.564	0.568	0.524	0.540
France	1995	20142	0.485	0.562	0.547	0.485	0.561
Germany	1995	21049	0.494	0.546	0.643	0.640	0.633
Greece	1996	12751	0.647	0.711		0.602	0.602
Italy	1992	19810	0.498	0.586	0.527	0.498	0.608
Japan	1995	23361	0.573	0.653	0.645	0.552	0.649
Netherlands	1996	21431	0.432	0.532	0.525	0.544	0.551
Norway	1997	26178	0.346	0.458		0.653	0.566
Spain	1995	16296	0.564	0.638	0.701	0.572	0.678
UK	1998	21693	0.410	0.481		0.427	0.492
US	1997	30286	0.423	0.527	0.515	0.470	0.538
Average			0.508	0.590	0.579	0.544	0.578
Corr. with real per capita GDP			-0.69	-0.64	-0.01	-0.22	-0.29

Data sources: Burstein et al. (2004), UN (2001a), OECD (2004), Heston et al. (2002).

Table 13: Investment rates and prices in the PWT 1996 benchmark data

Variable	Real GDP per worker relative to the US						
	<5%	5%-10%	10%-15%	15%-20%	20%-25%	...	>75%
Number of countries	10	11	9	9	9		21
Average I/Y	0.14	0.22	0.22	0.22	0.22		0.2
Average $(I/Y)^{PPP}$	0.08	0.12	0.14	0.16	0.18		0.24
Average p_T	0.99	1.03	0.71	0.83	0.94		1.06
Average p_N	0.59	0.6	0.49	0.5	0.45		1.42

Data sources: Heston et al. (2002).

Figure 1: Investment expenditure share on nontraded goods, cross-section averages

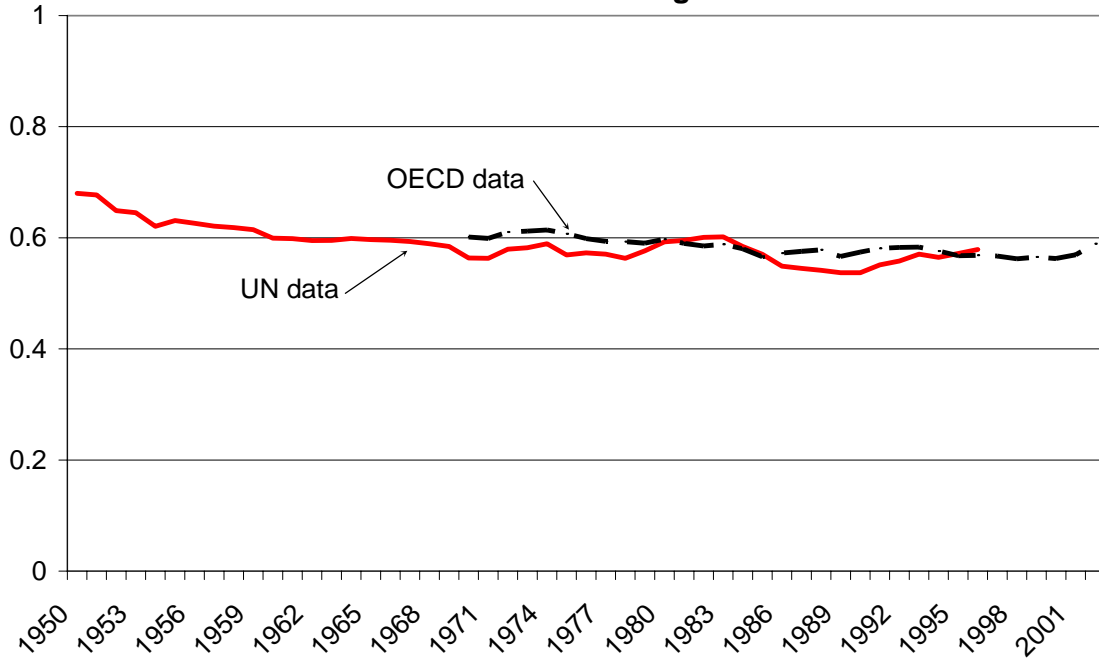
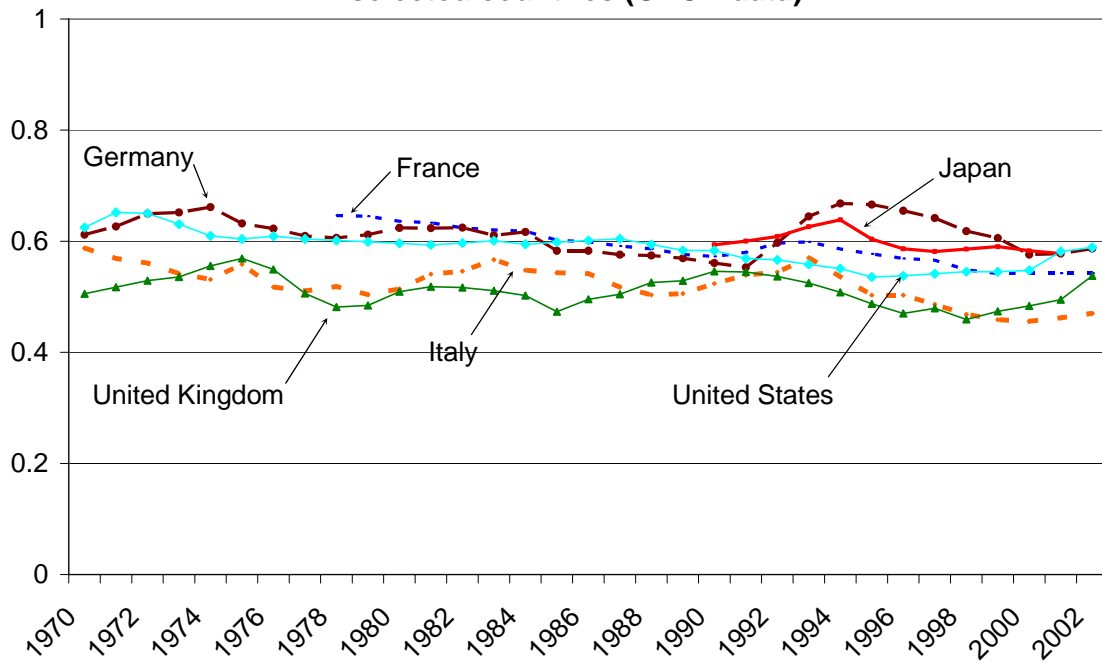
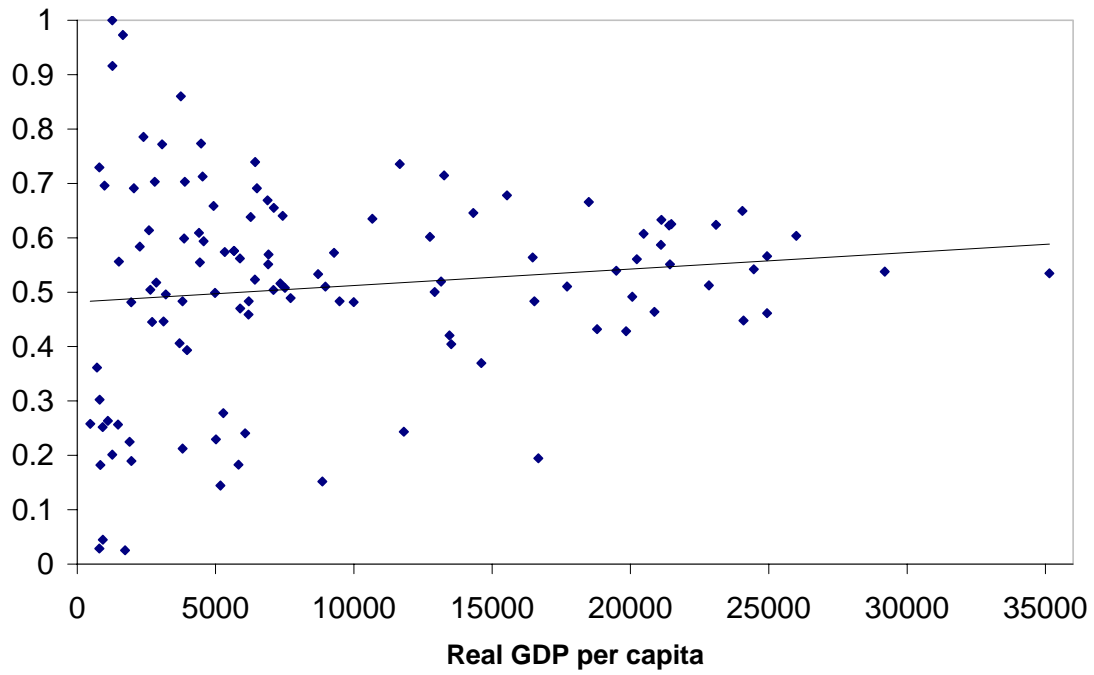


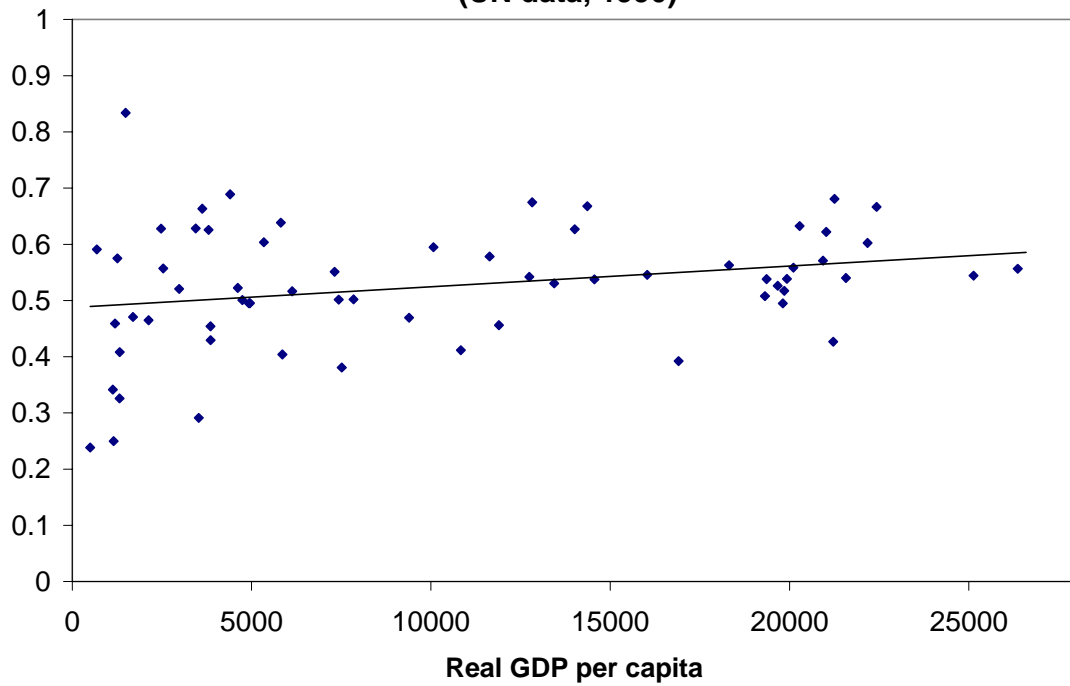
Figure 2: Investment expenditure share on nontraded goods in selected countries (OECD data)



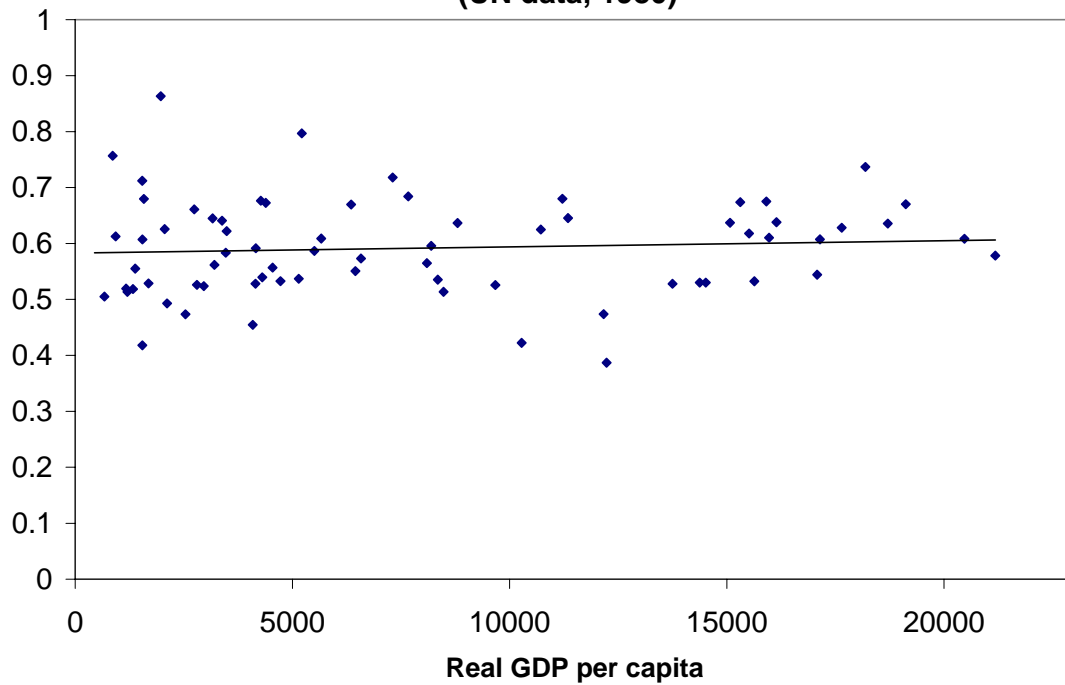
**Figure 3: Investment expenditure share on nontraded goods
(1996 PWT benchmark data)**



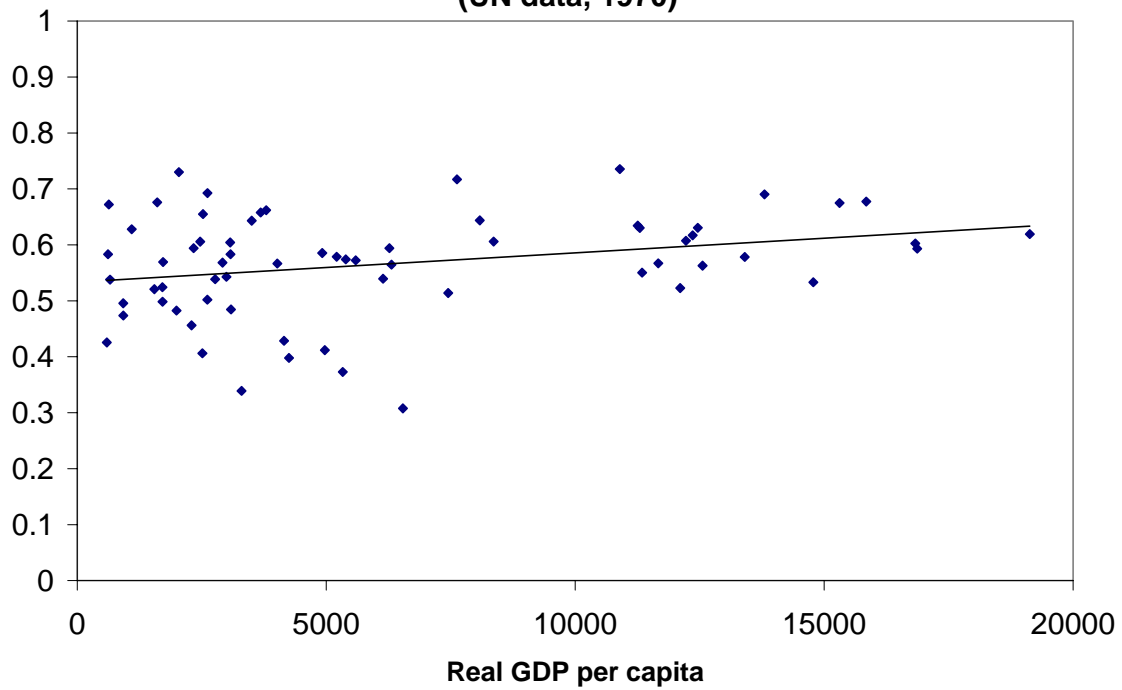
**Figure 4: Investment expenditure share on nontraded goods
(UN data, 1990)**



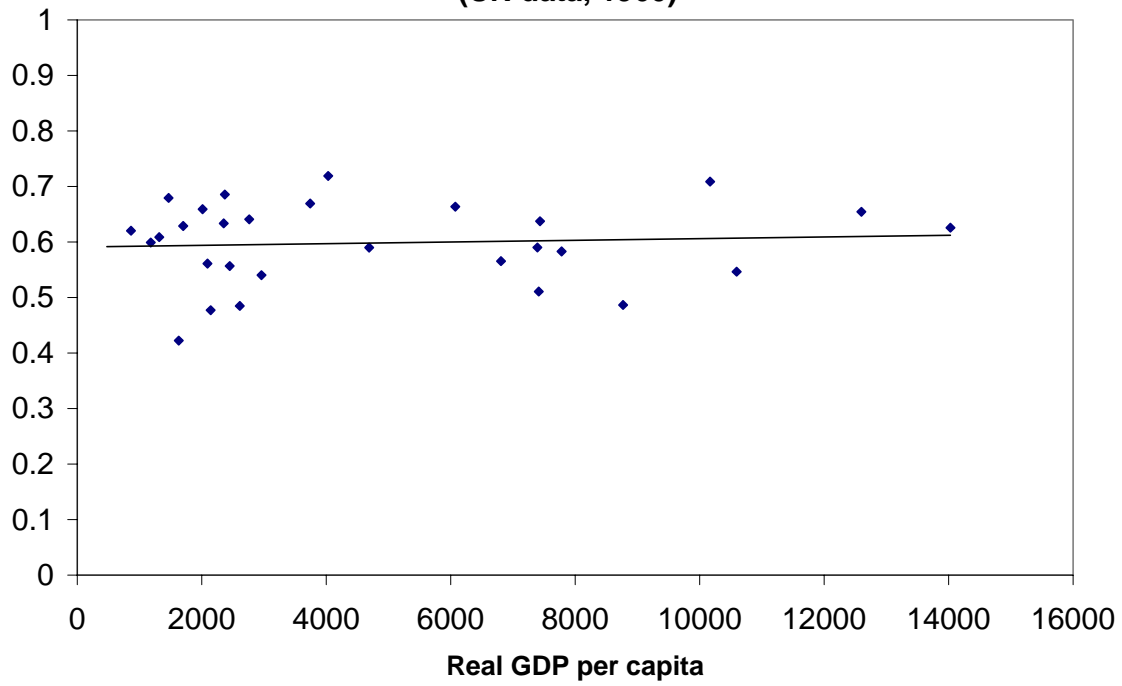
**Figure 5: Investment expenditure share on nontraded goods
(UN data, 1980)**



**Figure 6: Investment expenditure share on nontraded goods
(UN data, 1970)**



**Figure 7: Investment expenditure share on nontraded goods
(UN data, 1960)**



**Figure 8: Investment expenditure share on nontraded goods
for selected regions (UN data)**

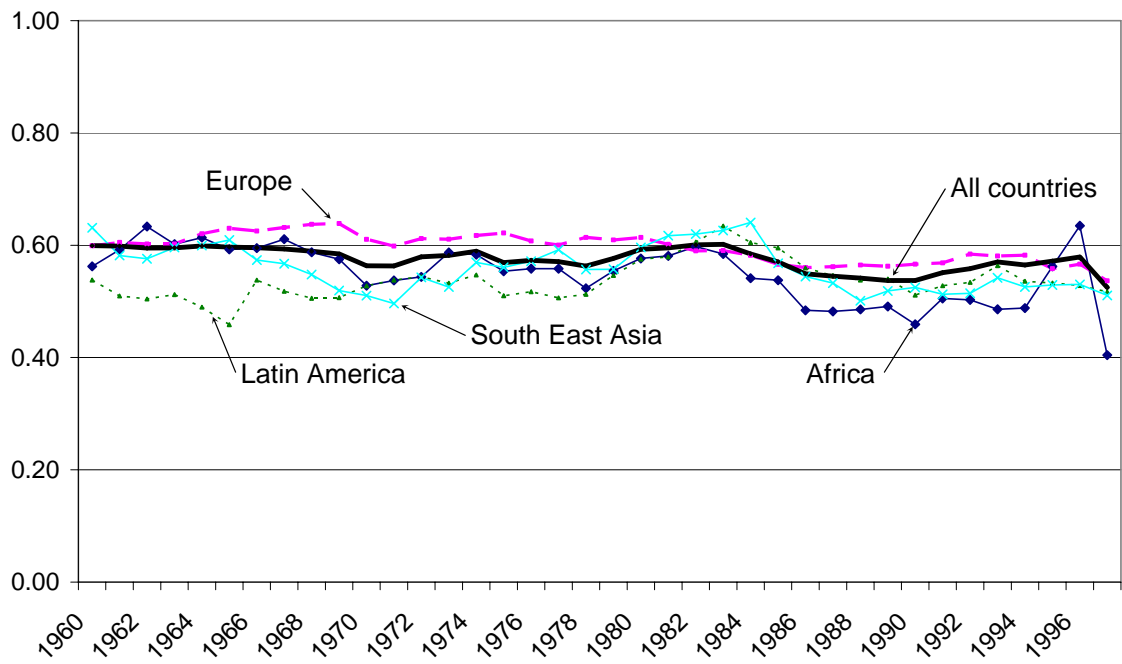


Figure 9: Variation in *international price* investment rates under different model specifications

