



POLITECNICO DI TORINO
Repository ISTITUZIONALE

Morphological and hemodynamic characterization of post endovascular AAA repair: comparison between two different commercial devices

Original

Morphological and hemodynamic characterization of post endovascular AAA repair: comparison between two different commercial devices / Paola, Tasso; Anastasios, Raptis; Michalis, Xenos; Maurizio Lodi Rizzini, ; Diego, Gallo; Miltiadis, Matsagkas; Umberto, Morbiducci. - ELETTRONICO. - (2017). ((Intervento presentato al convegno 29th International Congress of the Society for Medical Innovation and Technology tenutosi a Torino nel November, 9-10 2017.

Availability:

This version is available at: 11583/2696069 since: 2018-01-08T08:58:09Z

Publisher:

29th International Congress of the Society for Medical Innovation and Technology

Published

DOI:

Terms of use:

openAccess

This article is made available under terms and conditions as specified in the corresponding bibliographic description in the repository

Publisher copyright

(Article begins on next page)

Morphological and hemodynamic characterization of post endovascular AAA repair: comparison between two different commercial devices

Paola Tasso¹, Anastasios Raptis², Michalis Xenos^{2,3}, Maurizio Lodi Rizzini¹,
Diego Gallo¹, Miltiadis Matsagkas^{2,4}, Umberto Morbiducci¹

1)Department of Mechanical and Aerospace Engineer Politecnico di Torino, Italy; 2) Institute of Vascular Diseases Laboratory for Vascular Simulations Ioannina, Greece; 3) Dept. of Mathematics University of Ioannina, Greece; 4) Dept. of Vascular Surgery, Faculty of Medicine, University of Thessaly, Greece

1. Introduction

Abdominal aortic aneurysm (AAA) is a vascular disease characterized by a localized expansion of the abdominal aorta. In the last years the minimally invasive endovascular aortic repair (EVAR) approach for AAA treatment has been widely applied as alternative to classical open-chest surgery. EVAR results in (1) redirection of blood through the deployed endograft, and in (2) iliac bifurcation reshaping, thus altering local hemodynamics [1]. In this study the impact that two different commercial endovascular graft (EG) devices, have on vascular geometry and hemodynamics is investigated. In detail, geometric features are pre- and post-operatively evaluated. Computational Fluid Dynamics (CFD) is applied to explore if the vascular territory post interventional reshaping supports the re-establishment of physiological hemodynamics.

2. Methods

Subjects suffering from AAA were treated with two EG systems, N=5 with the Endurant® (Medtronic, CA, USA), N=5 with the Excluder® (Gore Medical, AZ, USA) (fig. 1). Also N=5 healthy subjects underwent CT angiography. CT scans were obtained before and one month after EVAR [1]. 3D models were reconstructed from CT images[1].

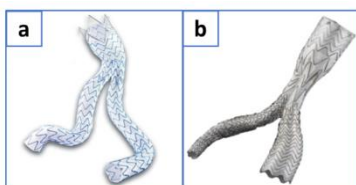


Figure 1: (a) Endurant device, (b) Excluder device.

Centerline-based geometry analysis was carried out on reconstructed models, in terms of curvature, torsion, normalized cross-sectional area and cross-sectional area variation rate [2]. The reconstructed 3D geometries were meshed with tetrahedral elements [1]. The governing equations of blood flow were solved by using the finite volume method. Boundary conditions at inflow and outflow sections

were based on flow and pressure measurements [1]. Near-wall hemodynamics and intravascular flow structures were described in terms of time-average wall shear stress (TAWSS), and in terms of helical flow, blood recirculation volume (RV), respectively.

3. Results

Geometric features are similar between treated groups but present higher and more scattered values than healthy subjects, as an average. In terms of hemodynamics, subjects treated with the Excluder present lower percentages of surface area exposed to low WSS and lower RV (fig. 2).

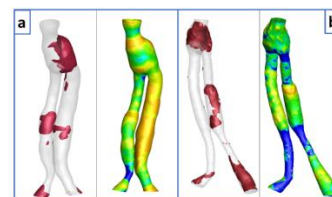


Figure 2: Explanatory RV and TAWSS maps: (a) Endurant; (b) Excluder. In TAWSS maps low values are colored with red.

Overall, the Excluder group presents the highest TAWSS and helicity intensity values.

4. Discussion

From the geometrical point of view there are no marked differences between the two devices. From the hemodynamic point of view Excluder models present a higher mean value of TAWSS and helicity that could confirm that the helical flow plays a beneficial role in suppressing low velocity/stagnation regions that could lead to thrombus formation.

References

1. A. Raptis, M. Xenos, E. Georgakarakos, G. Kouvelos, A. Giannoukas, N. Labropoulos et al., "Comparison of physiological and post-endovascular aneurysm repair infrarenal blood flow", Computer Methods in Biomechanics and Biomedical Engineering, vol.20, p. 242-249, 2016.
2. D. Gallo, A. Lefieux, S. Morganti, A. Veneziani, A. Reali, F. Auricchio, M. Conti, U. Morbiducci, "A patient-specific follow up study of the impact of thoracic endovascular repair (TEVAR) on aortic anatomy and on post-operative hemodynamics", Computer and Fluids, vol.141, p.54-61, 2016.