



POLITECNICO DI TORINO
Repository ISTITUZIONALE

Surface EMG and muscle fatigue: multi-channel approaches to the study of myoelectric manifestations of muscle fatigue

Original

Surface EMG and muscle fatigue: multi-channel approaches to the study of myoelectric manifestations of muscle fatigue / Gazzoni, Marco; Botter, Alberto; Martins, Taian. - In: PHYSIOLOGICAL MEASUREMENT. - ISSN 0967-3334. - STAMPA. - 38:5(2017), pp. 27-60.

Availability:

This version is available at: 11583/2673165 since: 2017-07-25T17:03:07Z

Publisher:

IOP Publishing

Published

DOI:10.1088/1361-6579/aa60b9

Terms of use:

openAccess

This article is made available under terms and conditions as specified in the corresponding bibliographic description in the repository

Publisher copyright

(Article begins on next page)

Surface EMG and muscle fatigue: multi-channel approaches to the study of myoelectric manifestations of muscle fatigue

This content has been downloaded from IOPscience. Please scroll down to see the full text.

2017 Physiol. Meas. 38 R27

(<http://iopscience.iop.org/0967-3334/38/5/R27>)

View [the table of contents for this issue](#), or go to the [journal homepage](#) for more

Download details:

IP Address: 130.192.232.213

This content was downloaded on 04/04/2017 at 08:34

Please note that [terms and conditions apply](#).

You may also be interested in:

[Blind source identification from the multichannel surface electromyogram](#)

A Holobar and D Farina

[Accurate identification of motor unit discharge patterns from high-density surface EMG and validation with a novel signal-based performance metric](#)

A Holobar, M A Minetto and D Farina

[Muscle fiber conduction velocity and fractal dimension of EMG during fatiguing contraction of young and elderly active men](#)

Gennaro Boccia, Davide Dardanella, Matteo Beretta-Piccoli et al.

[Accuracy assessment of CKC high-density surface EMG decomposition in biceps femoris muscle](#)

H R Marateb, K C McGill, A Holobar et al.

[Decrease of muscle fiber conduction velocity correlates with strength loss after an endurance run](#)

Gennaro Boccia, Davide Dardanella, Cantor Tarperi et al.

[Multi-channel intramuscular and surface EMG decomposition by convolutive blind source separation](#)

Francesco Negro, Silvia Muceli, Anna Margherita Castronovo et al.

[Muscle spindles, firing rates and motor unit recruitment](#)

C J De Luca and J C Kline

[Test-retest reliability of muscle fiber conduction velocity and fractal dimension of surface EMG during isometric contractions](#)

Matteo Beretta-Piccoli, Giuseppe D'Antona, Cristian Zampella et al.

Topical Review

Surface EMG and muscle fatigue: multi-channel approaches to the study of myoelectric manifestations of muscle fatigue

Gazzoni Marco^{1,2}, Botter Alberto and Vieira Taian

Laboratory for Engineering of the Neuromuscular System (LISiN), Department of Electronics and Telecommunications, Politecnico di Torino, Torino, Italy

E-mail: marco.gazzoni@polito.it

Received 5 November 2015, revised 10 November 2016

Accepted for publication 15 February 2017

Published 31 March 2017



CrossMark

Abstract

In a broad view, fatigue is used to indicate a degree of weariness. On a muscular level, fatigue posits the reduced capacity of muscle fibres to produce force, even in the presence of motor neuron excitation via either spinal mechanisms or electric pulses applied externally. Prior to decreased force, when sustaining physically demanding tasks, alterations in the muscle electrical properties take place. These alterations, termed *myoelectric manifestation of fatigue*, can be assessed non-invasively with a pair of surface electrodes positioned appropriately on the target muscle; *traditional approach*. A relatively more recent approach consists of the use of multiple electrodes. This *multi-channel approach* provides access to a set of physiologically relevant variables on the global muscle level or on the level of single motor units, opening new fronts for the study of muscle fatigue; it allows for: (i) a more precise quantification of the propagation velocity, a physiological variable of marked interest to the study of fatigue; (ii) the assessment of regional, myoelectric manifestations of fatigue; (iii) the analysis of single motor units, with the possibility to obtain information about motor unit control and fibre membrane changes. This review provides a methodological account on the *multi-channel*

¹ Author to whom any correspondence should be addressed.

Laboratory of Engineering of Neuromuscular System (LISiN), Department of Electronics and Telecommunications, Politecnico di Torino, Corso Duca degli Abruzzi 24, 10129 Torino, Italy.

² www.lisin.polito.it



Original content from this work may be used under the terms of the [Creative Commons Attribution 3.0 licence](https://creativecommons.org/licenses/by/3.0/). Any further distribution of this work must maintain attribution to the author(s) and the title of the work, journal citation and DOI.

approach for the study of *myoelectric manifestation of fatigue* and on the experimental conditions to which it applies, as well as examples of their current applications.

Keywords: myoelectric manifestations of fatigue, fatigue, surface EMG, multi-channel surface EMG, motor unit, conduction velocity

(Some figures may appear in colour only in the online journal)

1. Introduction

Fatigue, in its broad sense, occurs in everyday life and can be described as a feeling of weakness, of muscle pain or a decrease in performance during physical or cognitive activities. When analyzed at the level of the neuromuscular system, fatigue is classically defined as an exercise-induced decline of the maximal force muscles can generate (Gandevia 2001, Enoka and Duchateau 2008).

During sustained submaximal contractions, both peripheral and central changes lead to alterations in the activity of muscles undergoing fatigue *prior* to task failure (Gandevia 2001, Barry and Enoka 2007, Enoka and Duchateau 2008). These changes, termed *myoelectric manifestation of fatigue*, can be assessed non-invasively from EMGs detected with a pair of surface electrodes positioned appropriately on the target muscle.

Many methods have been developed to characterize muscle fatigue from surface EMGs during isometric and dynamic contractions. Among them are the Fourier-based spectral estimators, parametric based spectral estimators, joint analysis of EMG spectrum and amplitude (JASA), time–frequency and time-scale methods, Wigner–Ville distribution, Choi–Williams distribution, time-varying autoregressive approaches, wavelet analysis, entropy, recurrence quantification analysis. Some recent works in literature give an exhaustive overview and critical analysis of the mentioned methods for fatigue evaluation with the bipolar electrodes (Cifrek *et al* 2009, González-Izal *et al* 2012, Merletti and Farina 2016); for this reason they will not be described in this review. This review specifically focuses on providing readers with a comprehensive view of the insights gained into the study of *myoelectric manifestation of fatigue* with multiple, surface electrodes; i.e. with the *multi-channel approach*.

2. Myoelectric manifestations of fatigue assessed with the multi-channel approach

The possibility of using multiple surface electrodes to sample EMGs from multiple regions of any given muscle has been attracting the interest of a progressively greater number of researchers and clinicians. Surface EMGs may be detected serially along the longitudinal or transverse axis of the muscle using linear arrays of surface electrodes (Wood *et al* 2001, Merletti *et al* 2003). Alternatively, the distribution of EMG amplitude and spectral descriptors may be assessed over the whole skin region covering the target muscle with bi-dimensional arrays of electrodes (Falla and Farina 2007, Gallina *et al* 2013b, Vieira *et al* 2015). Hereafter, *multi-channel approach* is used to indicate indistinctively the sampling of EMGs with multiple electrodes, regardless of whether arranged serially or bi-dimensionally. The simplest *multi-channel approach* consists in the manual positioning of individual electrodes over the muscle of interest (Sacco *et al* 2009, Staudenmann *et al* 2009). Even though it allows for the distribution of electrodes in different ways over any target muscle, the manual positioning of

multiple surface electrodes may demand considerable time and is unlikely to provide a fixed inter-electrode distance. Moreover, the number of detection points is limited to the size of individual electrodes, which is typically relatively large; sampling from multiple regions of e.g. the small hand muscles with conventional pre-gelled electrodes is likely unviable. Embedding electrodes into flexible dielectric materials, on the other hand, has led to the development of an assortment of multi-channel detection systems, of varying size, dimension of electrodes and inter-electrode distances that adapt to almost any superficial muscles, from the external anal sphincter (Cescon *et al* 2011) to the facial muscles (Lapatki *et al* 2006). The technology considered for the design of such systems and the insights they provide into the neuromuscular system were the subject of reviews and text books published recently (Blok *et al* 2002, Drost *et al* 2006, Merletti *et al* 2009, 2010, Holobar and Farina 2014, Merletti and Farina 2016). In this section, we specifically indicate to readers how the *multi-channel approach* may contribute to advancing our knowledge on the neurophysiological mechanisms underpinning muscle fatigue, both at the global muscle level and at the level of individual motor units (MUs).

2.1. Global muscle level

In virtue of the relatively large inter-electrode distance, surface electrodes sample from a considerably larger muscle volume than intramuscular electrodes (Lynn *et al* 1978). With respect to EMGs collected from within the muscle, surface EMGs consequently provide a more representative view of the whole muscle electrical activity and are therefore more likely sensitive to myoelectric changes resulting from muscle fatigue (Rudroff *et al* 2008). The *multi-channel approach* further broadens the representation of muscle activity in the EMGs, opening new fronts for the study of muscle fatigue; it allows for: (i) the quantification of the propagation velocity, a physiological variable of marked interest to the study of fatigue (Merletti *et al* 1990); (ii) the assessment of regional, myoelectric manifestations of fatigue (Gallina *et al* 2011, Watanabe *et al* 2013). Both arguments are covered below.

2.1.1. Conduction velocity (CV). Muscle fibre CV is defined as the propagation velocity of depolarization along the muscle fibre (Merletti *et al* 1990). Differently from EMG amplitude and spectral variables, CV is not only a mathematical descriptor but an important physiological variable directly related to fibre membrane properties, fibre diameter and fibre contractile characteristics (Andreassen and Arendt-Nielsen 1987). It is well established that changes in CV affect the shape of the measured motor unit action potential (MUAP) waveform and, finally, the amplitude and spectral variables of surface EMG (Lindstrom and Magnusson 1977, De Luca 1984, Arendt-Nielsen and Mills 1985). During sustained contractions, metabolic changes in the muscle affect the cellular mechanisms underlying ionic exchanges across the membrane and therefore the propagation of action potential (Allen *et al* 2008). These changes result in a progressive reduction of CV. This reduction is one of the main causes of the changes occurring in amplitude and spectral EMG variables during fatigue (Merletti *et al* 1990). Accessing this basic, physiological variable provides a relevant means to describe and quantify the fatigue processes taking place within the muscle. This section describes the methods for CV estimation, highlighting the important factors for its interpretation as an index of muscle fatigue.

2.1.1.1. Methods for CV estimation and implications for assessing fatigue. The estimation of muscle fibre CV from surface recordings is based on the measure of the delay between potentials recorded at fixed distances along the muscle fibres. In ideal conditions (i.e. when

signals are identical, continuous and noise free) this delay can be determined with very simple methods. However, as described later, these conditions are hardly met in real recordings and the problem of delay estimation becomes more complex. Indeed, if signals are similar but not identical, the delay can be mathematically defined in several ways, depending on the criteria used to compare signal shapes (Merletti and Farina 2016).

There is an extensive literature concerning methods to measure the delay between two signals. The simplest approach is to identify latency between reference points (e.g. peak value or zero crossing) of the two signals (Andreassen and Arendt-Nielsen 1987). This method is highly affected by subtle variations in the shape of the potentials due to electrode-fibre misalignment or to noise that can markedly modify the time of occurrence of the reference points. This approach seems appropriate only in recordings with high signal-to-noise ratio, such as in electrically induced contractions and in experimental conditions where the high similarity between recorded potentials can be ensured. Another simple delay estimator, though more robust to noise and slight changes in signal shape, is the time shift that minimizes the least square error between the two detected signals. This delay definition corresponds to the maximum likelihood estimation in case of white additive noise (Farina and Merletti 2000). According to this delay definition, estimators based on the maximum of cross-correlation between pairs of signals have been proposed (Sollie *et al* 1985).

A common issue associated with the time domain methods applied to discrete signals is the temporal sampling. In such case, regardless of the method used, the delay estimation in time can be performed at best with a resolution of ± 0.5 sampling interval (hundreds of μs for the sampling rates classically used for surface EMG, 1–2 kHz). Considering that the delay resulting from propagation is in the range of a few ms (for electrodes 1–2 cm apart), this limited temporal resolution may lead to relevant errors in the delay estimation (Farina and Merletti 2000), even if the signals are identical and sampled above the Nyquist frequency (see figure 1 in McGill and Dorfman (1984)). This problem can be addressed by increasing significantly (10–20 times) the sampling frequency, with the obvious consequences in terms of memory occupation, or by interpolating the cross correlation function around the peak (Wheeler and Smith 1988).

Alternative approaches consist in matching the signals in the frequency domain (i.e. to the Fourier transforms of the signals). In the frequency domain the delay is a continuous rather than a discrete variable (Merletti and Lo Conte 1995). On this regard, spectral matching (McGill and Dorfman 1984) and phase delay (Hunter *et al* 1987) techniques have been proposed. The comparison between temporal and frequency methods showed that methods based on interpolated cross-correlation function have similar performance of spectral matching and that the phase delay method should be avoided in case of low signal-to-noise ratio (Farina and Merletti 2000).

The aforementioned methods have been originally developed to be applied to pairs of single differential or double differential signals. More recently, methods based on more than two channels arranged serially (linear arrays) or bi-dimensionally (grids of electrodes) have been proposed (Farina *et al* 2001, Farina and Merletti 2004, Farina *et al* 2004c, Grönlund *et al* 2005, Mesin 2015, Soares *et al* 2015). These methods have been shown to significantly improve CV estimates, in terms of variance of estimation, sensitivity of the estimate to electrode location and repeatability. Approaches based on image processing techniques applied to spatio-temporal pattern of signal propagation detected with grids of electrodes have been tested on simulated signals, providing promising results (Grönlund *et al* 2005, Mesin 2015). These methods may also be used to identify anatomical features of the muscle (and their change during the contraction) such as innervation location and muscle fibre orientation, critically affecting the estimation of EMG variables (Rainoldi *et al* 2000, Farina *et al* 2002b) as described below.

Fatigue-related changes in CV can be assessed by applying the methods described above to the global EMGs (M-wave in case of electrically induced contractions or the interferential EMGs in case of voluntary contractions) or to single motor unit action potentials (MUAPs). When applied to the global signal, the estimated CV is an average value originating from the actual CV of all MUAPs detected in the considered time window; this average is weighted for the size of the detected MUAPs and is therefore biased towards the CV of MUs better represented in the surface potential, i.e. the largest and the most superficial ones. Indeed, considering that large MUs usually have higher CV (Andreassen and Arendt-Nielsen 1987), if MU territories are randomly scattered across the detection volume, it is more likely that larger MUs, with higher CV, generate larger potentials, thus biasing CV estimates and their changes with fatigue. Additional factors possibly influencing CV estimates are the presence of generation and extinction potentials, the inclination of fibres with respect to the detection system and the non-homogeneity of subcutaneous layers along the fibre length (Schneider *et al* 1991, Farina *et al* 2002b). Among these factors, misalignment between the fibres and the detection system seems to be particularly critical. It has been shown that when anisotropic detection systems (single differential or double differential) are used, a fibre-electrode misalignment frequently results in CV overestimation, depending on the position of the MU territory with respect to the electrodes and on the characteristics of the detection volume (Schneider *et al* 1991, Merletti *et al* 1999, Farina *et al* 2002b). Moreover, beside the cases where fibre-electrode alignment is overtly not viable, as for in-depth-pinnate muscles (Mesin *et al* 2011, Gallina *et al* 2013b) (see also section 2.1.3), it is often difficult and time-consuming to identify the optimal alignment, which could change during the contraction. In addition, even in isometric and constant force contractions, relevant changes in fibre geometry may occur due to mechanical adaptations of muscle structures during fatigue (Kubo *et al* 2001, Shi *et al* 2007, Mitsukawa *et al* 2009). This is a possible additional confounding factor that, together with recruitment/de-recruitment of MU populations (Gazzoni *et al* 2001, Houtman *et al* 2003, Bawa and Murnaghan 2009), complicates the interpretation of CV changes even in well controlled conditions, such as isometric and constant force contractions. Interpretations may be further aggravated when CV is normalized with respect to the initial value.

As described above, the CV estimation obtained from interferential EMGs is the mean value of the CV distribution of active MUs, weighted by the effect of the conduction volume. The possibility of accessing the profile of CV distribution with non-invasive techniques is certainly intriguing, as it provides the means of describing in more details the complex events occurring during fatigue likely hidden in the mean value. In 1987, Davies and Parker (1987) proposed the first method to extract features of the CV probability density function from surface EMGs. The method was based on the measurement of the cross- and auto-power spectra of surface EMGs detected by a pair of electrodes. More recently, different methods have been used to investigate the changes in CV distribution during fatigue (Farina *et al* 2000, Lange *et al* 2002, Gazzoni *et al* 2004). All these approaches are based on the identification of MUAP occurrences in the interference signal and CV is then estimated for each identified MUAP. Methods substantially differ on the way MUAPs are extracted. The simplest approach was proposed by Lange and collaborators (Lange *et al* 2002); it is based on the identification of the occurrence of pairs of peaks in two bipolar EMGs. Epochs containing peaks separated by a delay compatible with a physiological CV are selected for CV estimation. This approach has been used to investigate the recruitment of MU populations during fatiguing contractions (Houtman *et al* 2003), fatigue in fibromyalgia (Klaver-Król *et al* 2012) and differences in CV distributions between sprinters and endurance athletes (Klaver-Król *et al* 2010). A more sophisticated method proposed by Farina *et al* (2000) applies a continuous wavelet transform to the double-differential surface EMG to determine the time location and to estimate the

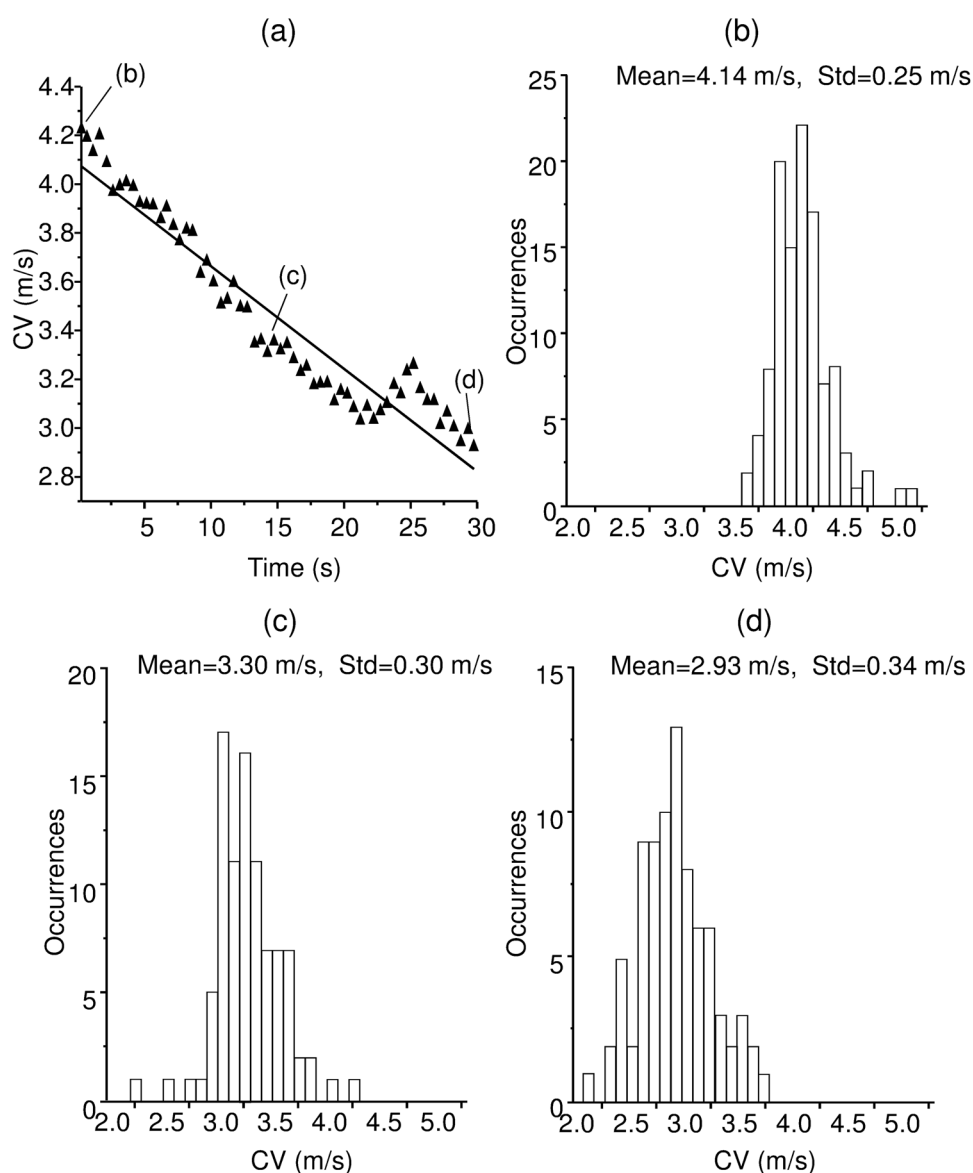


Figure 1. (a) Global CV estimates and (b)–(d) CV distributions obtained from EMGs detected during a 30 s long constant force (60% MVC) isometric contraction of a healthy biceps-brachii. Global CV was estimated using the method described in McGill and Dorfman (1984) whereas CV distributions were calculated from 1 s epochs using the method described in Farina *et al* (2000). It can be observed that global estimate and its changes are in agreement with those provided by the estimation of CV distribution. Adapted from Farina *et al* (2000) with permission.

duration of waveforms that are candidate MUAPs. An algorithm based on beamforming is then applied to estimate the CV and to decide whether the detected waveform is a travelling potential (and therefore contributing to CV distribution) or not. An example of fatigue-induced changes in CV distribution in healthy biceps brachii estimated with this method is provided in

figure 1; the time course of mean muscle fibre CV estimated with spectral matching (McGill and Dorfman 1984) is also reported for comparison. This method was experimentally validated by comparing CV estimates with those obtained with spike trigger averaging technique (Farina *et al* 2002a) and was applied to study fatigue in elderly (Merletti *et al* 2002) and in subjects affected by carpal tunnel syndrome (Rainoldi *et al* 2008). In 2004, Gazzoni *et al* (2004) proposed a method for the extraction and classification of single MUAPs from surface EMG: MUAPs are first identified and extracted from the interference signal (segmentation step) and then clustered in MUs using a multichannel neural network. By estimating CV for all MUAPs identified in the segmentation step, Casale *et al* (2009) investigated the fatigue-related changes in CV distribution in subject affected by fibromyalgia.

Methods for CV distribution seem to provide a powerful tool to obtain more insights into the changes of mean muscle CV. It is important to underline, however, that in all the methods described, CV is estimated from all the identified firings, thus providing the CV distribution of the identified MUAPs, not of the identified MUs (which would imply classification of identified MUAPs and a single value of CV estimation for each, identified MU). This means that MUs firing with higher rates contribute to the CV distribution with higher number of occurrences, thus biasing the CV distribution and its descriptors (e.g. standard deviation). For the same reason, MUs that are represented with higher energy on the surface potential tend to mask the contribution of low energy ones, thus biasing the CV distribution profile (Merletti *et al* 2002). Methods based on MU decomposition (Gazzoni *et al* 2004, De Luca *et al* 2006, Holobar and Zazula 2007, Kleine *et al* 2007, Holobar *et al* 2009, Negro *et al* 2016) have the potential of providing the actual MU CV distribution. However, at the present time, the number of MUs extracted by these methods (few tens) may not provide CV histograms sufficiently representative of the MUs within the electrodes' detection volume.

2.1.1.2. Changes in CV and spectral descriptors, do they provide the same information? The effect of CV reduction on spectral and amplitude variables of surface EMG is well established (Lindstrom and Magnusson 1977, De Luca 1984). Lindström and Magnusson (Lindstrom and Magnusson 1977) demonstrated analytically how muscle fibre CV acts as a scaling factor for EMGs amplitude and its power spectrum. They showed that if a signal is scaled in time by a factor k , due to a change in CV ($k < 1$ for CV reduction), its power spectrum is compressed by the same factor. This compression in the frequency scale results in a change of spectral descriptors, such as mean frequency (MNF) and median frequency (MDF). The scaling affect amplitude variables as well; average rectified value (ARV) changes by a factor $1/k$ and root mean square (RMS) changes by a factor $1/\sqrt{k}$. From these theoretical considerations, it follows that if the CV reductions were the only changes occurring during fatiguing contractions, scaling factors of CV and spectral parameters would be identical. In this case, the CV rate of decrease could be predicted by measuring the scaling factor (k) determined by the decrease of mean (or median) frequency of the power spectral density and a single channel EMG detection would provide a substantial description of fatigue processes taking place at the muscle level. Unfortunately, as explained in the following, this does not seem to be the case for most of the real scenarios. Indeed, as observed by several Authors, the rates of decrease of spectral variables are generally greater than those of CV, suggesting that CV reduction is not the only factor determining spectral changes in surface EMG (Bigland-Ritchie *et al* 1981, Merletti *et al* 1990, Hägg 1992, Krogh-Lund and Jørgensen 1993, Rainoldi *et al* 1999, Dimitrova and Dimitrov 2003, Farina *et al* 2006). The observed differences between the behavior of CV and spectral descriptors are generally more subtle, though often present, during electrically induced contractions and more pronounced during voluntary efforts (figure 2). A number of possible causes have been suggested to explain these experimental observations. The first

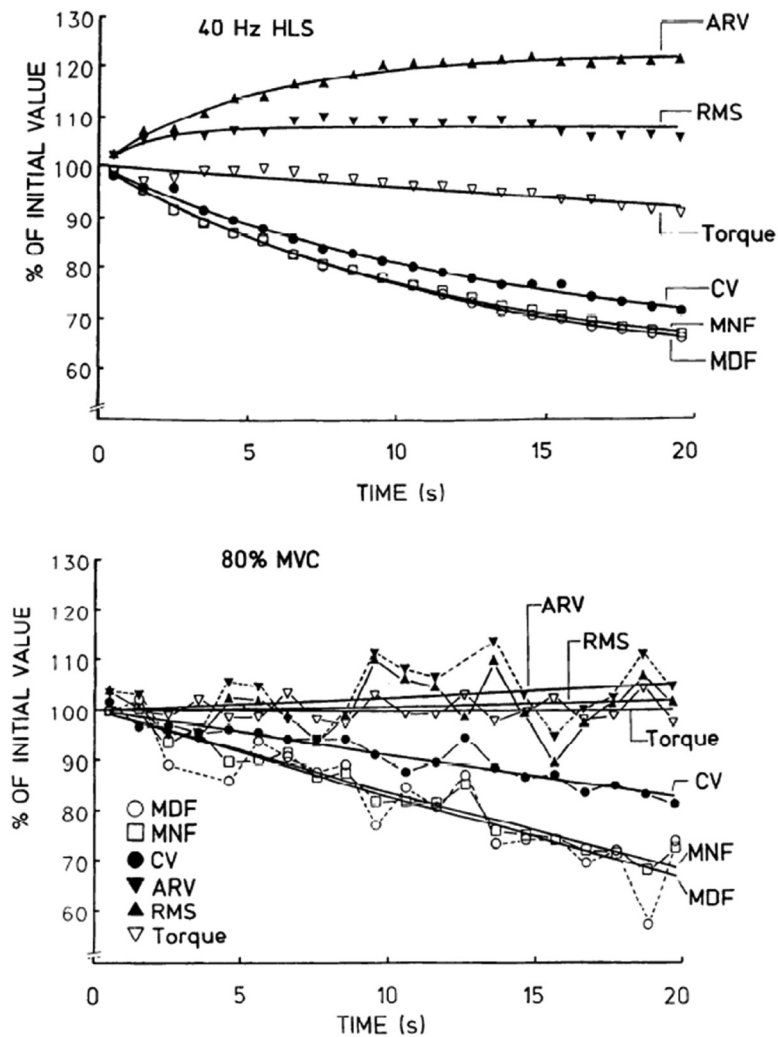


Figure 2. Normalized values (with respect to intercept of regression curve or line) of EMG variables during 40 Hz supramaximal stimulation (High Level Stimulation—HLS) and a 80% MVC from the tibialis anterior of same subject. Similar rate of change of CV with respect to either median or mean frequency (MDF or MNF) is more evident in the voluntary contraction. Adapted from Merletti *et al* (1990) with permission.

argument in this regard is that, besides CV, local fatigue induces changes in other parameters affecting the shape of the potential, such as duration of intramuscular action potential (IAP,) amplitudes of IAP and negative and positive after-potential (Dimitrova and Dimitrov 2003). Changes in the statistical distribution of CV values of active MU have been also regarded as a factor influencing the differences in the time course of CV and MNF estimates during fatigue. Specifically, Merletti *et al* (1990) suggested that different profiles of CV decrease for different fibres within the same MU may lead to a widening of surface potential whose effect on MNF is more pronounced than that due to the sole CV reduction. This behavior, described for a single MU, becomes particularly relevant in electrically induced contractions as the recorded EMG (the M-wave) results from the synchronous contribution of several MUs with a

wider range of CV and CV rates of change. When voluntary contractions are considered, MU recruitment and firing properties play an additional, relevant role. It has been demonstrated that the MUs recruited for compensating the fatigue-related reduction in muscle contractility may lead to an increase or decrease of frequency content of the interferential surface EMGs, depending on their position within the volume conductor, thus resulting in an unpredictable effect on spectral variables of surface EMGs (Farina *et al* 2006). Since CV estimations are theoretically insensitive to MU location within the muscle, MUs' recruitment may not affect equally CV estimates and spectral variables. The second consideration concerns the increased degree of MU synchronization associated with fatigue. Kleine *et al* (2001) showed that firing synchronization enhances the low frequency components of power spectrum thus reducing its median frequency. Modifications of spectral properties, also associated with an increase of surface EMG average rectified amplitude, do not seem however to affect significantly CV estimations (Farina *et al* 2002c). These considerations suggest a possible role of MU synchronization in the observed differences between relative changes of CV and spectral variables in voluntary, fatiguing contractions.

Overall, these observations indicate that fatigue-induced changes in spectral variables of global EMG cannot be considered a surrogate of CV. The effect of volume conductor properties and of fatigue-induced changes in the MU recruitment patterns (i.e. activation of additional MUs, de-recruitment of fatigued MUs and synchronization of active MUs) represents a relevant confounding factor for the interpretation of global variables, especially the spectral ones (Farina *et al* 2004a). This aspect is analyzed in more detail in section 2.2.

2.1.2. Regional variations of muscle activity. When collecting EMGs from a single muscle region, with the aim of e.g. studying muscle fatigue, one expects the recorded EMGs to be sensitive to neural changes within the whole muscle volume. Key results obtained from simulated and experimental EMGs detected with the *multi-channel approach* are though in contrast with the assumption of single, surface EMGs being representative of the whole muscle volume (Mesin *et al* 2011, Gallina *et al* 2013a), even for muscles as small as those in the forearm (Gallina and Botter 2013). Indeed, the amplitude of surface EMGs detected from a single muscle with electrodes positioned at different locations was observed to change by different extents in different circumstances, among which during fatiguing contractions (Zijdewind *et al* 1995, Falla and Farina 2007, Holtermann *et al* 2010, Gallina *et al* 2011). These pieces of evidence suggest the detection volume of surface electrodes, that is the muscle region within the pick-up volume of electrodes (Lynn *et al* 1978), is not as large as previously appreciated. In opposition to the detection of activity from muscles other than that of interest (i.e. crosstalk), surface EMGs detected locally may not reveal the changes occurring somewhere else within the muscle (Mesin *et al* 2011, Vieira *et al* 2011). This possibility, previously considered by others in applied studies (see page 20 in Nashner 1977 and page 489 in Joseph and Nightingale 1952), leads us into the question: do the myoelectric alterations signalling fatigue manifest equally on different skin regions covering the target muscle? Here we explore how the *multi-channel approach* has been used to address this question and highlight its added value to the study of muscle fatigue.

Before all, we would like to clarify what we mean by regional variations of muscle activity. The amplitude and the spectrum of surface EMGs collected from different muscle regions change in different ways. These changes have different meanings, depending on the direction along which they are assessed with respect to the muscle fibres. Considering for example a series of surface electrodes aligned parallel to the muscle fibres, the amplitude and bandwidth of EMGs differ between electrodes. Electrodes located nearby the innervation zone (i.e. the muscle end-plates) and the tendon regions provide single-differential EMGs with remarkably low amplitude and high frequency content (Rainoldi *et al* 2004). If detected in monopolar

derivation, EMGs collected nearby the innervation zone and tendon regions show, conversely, high amplitude and high energy in the low frequencies (Kleine *et al* 2000). The amplitude and spectral descriptors of EMGs detected both in monopolar and single-differential derivations do not change across electrodes located between the innervation zone and tendon regions; the same action potential is detected by these electrodes. Explaining the reason for such dependence of EMG descriptors on anatomical factors and on the detection modality is beyond the scope of this review. The interested reader may refer to previous literature for a comprehensive view on this argument (Farina *et al* 2002a). Most importantly, our point here is that changes in surface EMGs collected at different regions along the longitudinal axis of muscle fibres should be not conceived as reflecting neural changes across the muscle. Even though aligning a series of consecutive electrodes parallel to the muscle fibres is a necessary condition for the estimation of CV, the EMGs detected by these electrodes may be not used to support inferences on regional variations in muscle activity; that is, changes in activity between different regions within individual muscles. Inferences on regional variations in muscle activity proceed only from surface EMGs collected by electrodes positioned at skin regions covering different muscle fibres and not different sections of the same group of fibres.

The distinction between regional variations in muscle activity and anatomically-induced changes in EMGs is clear when EMGs are collected with grids of electrodes. Figure 3 shows examples of single-differential action potentials of two MUs detected from the vastus medialis muscle of a single subject (Gallina and Vieira 2015). MUs were identified by decomposing monopolar EMGs detected by 128 (16×8) electrodes, with columns of electrodes aligned parallel to the muscle longitudinal axis (figure 3a). Given the vastus medialis fibres are oriented obliquely with respect to the muscle longitudinal axis (Smith *et al* 2009), columns of electrodes and fibres are not located in parallel directions. Consequently, action potentials of individual MUs are clearly represented in oblique directions (45°) within the grid (figure 3). Close inspection of traces shown in figure 3(b) reveals there is a phase opposition between action potentials detected from the first to the fourth column and those detected from the two right most columns of electrodes. Similarly, a phase opposition is observed between potentials detected at the first column and those detected from the second to the sixth column for the MU shown in figure 3(c). Moreover, consecutive potentials detected at either side from the region where phase opposition is observed clearly show a consistent delay between themselves. Such a consistent delay indicates the propagation and therefore the fibres' direction is oblique with respect to rows and columns of electrodes. The oblique representation of action potentials of these two MUs is better appreciated in RMS images created separately for each surface potential shown in figures 3(b) and (c). For both MUs, potentials with high RMS amplitude appear along the proximo-medial disto-lateral direction, coinciding with the oblique orientation of vastus medialis fibres (Gallina and Vieira 2015). Narrow regions with markedly low RMS amplitude interposed between regions with large RMS amplitude are clearly seen (i.e. the innervation zone location). Also, potentials with small RMS amplitude are seen at proximo-medial extremity for MU 8 (figure 3(b)) and at the disto-lateral extremity for MU 10 (figure 3(c)), likely suggesting electrodes were located close to the fibres' ending. The changes in RMS amplitude observed in the proximo-medial disto-lateral direction result from the MU anatomy; the location of innervation zone and tendon regions in relation to electrodes. These are anatomically-induced changes in the surface EMGs. On the other hand, RMS images clearly show the action potentials of these two MUs are represented at somewhat distinct proximo-lateral disto-medial regions. Fibres of MU 8 are located ~ 6 cm proximo-laterally to the fibres of MU 10. Variations in surface EMGs collected at the proximo-lateral disto-medial direction, that is transverse to the muscle fibres' direction, are therefore indicative of regional variations in muscle activity.

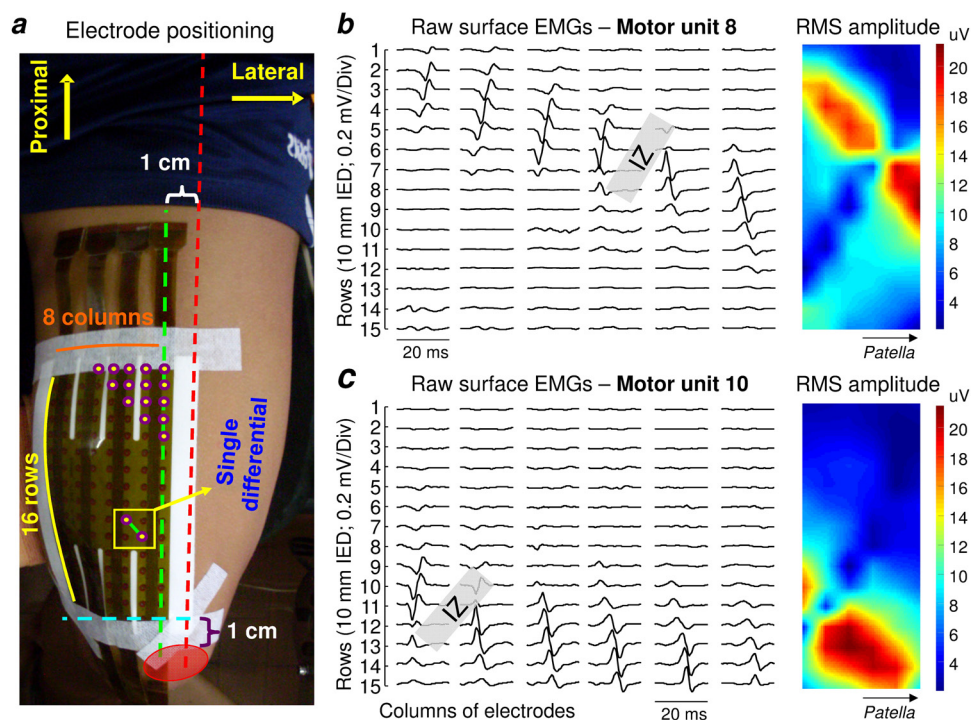


Figure 3. (a) Schematic illustration showing the positioning of a grid of 128 (16×8) electrodes (1 cm IED; inter-electrode distance) over the vastus medialis muscle. Single-differential, action potentials of two MU identified through decomposition of surface EMGs collected during isometric, knee extension contractions are shown in panel (b) (left column; Gallina and Vieira 2015). Single-differential potentials were computed from monopolar EMGs detected by consecutive electrodes aligned in the proximo-medial to disto-lateral direction. Shaded rectangles in the top and bottom rows indicate the location of the innervation zone for both units. The root mean square (RMS) amplitude calculated for each trace is shown in the right column. The direction along which highest RMS values distribute corresponds to the direction of muscle fibres. Note the action potentials of both units are represented in different, transverse regions.

Regional variations in muscle activity, studied with the *multi-channel approach*, provided two main insights into the myoelectric manifestations of muscle fatigue. The first insight concerns the manifestation of fatigue in the surface EMGs itself; namely the location within individual muscles where changes in surface EMGs are most expressive and thus where fibres are expected to most likely get fatigued. During a positional, endurance task, for instance, changes in the amplitude and spectrum of surface EMGs were observed to manifest locally within the trapezius muscle (Farina *et al* 2008c). Specifically, 11 subjects were asked to sustain their shoulder joint abducted at 90 degrees until failure while surface EMGs were collected from the trapezius muscle with a grid of 64 electrodes (13×5 arrangement, with columns aligned along the cranio-caudal direction; one missing electrode at the cranio-lateral edge of the grid). As shown in figure 4, at contraction start, EMGs with largest RMS amplitude were detected centrally. With the progression of contraction, the region where largest EMGs were detected changed systematically towards electrodes located cranially (see crossed circles in figure 4). At the contraction end (100% endurance time), EMGs with greatest amplitude were observed at the cranial third of the grid. Using a different EMG descriptor, an independent,

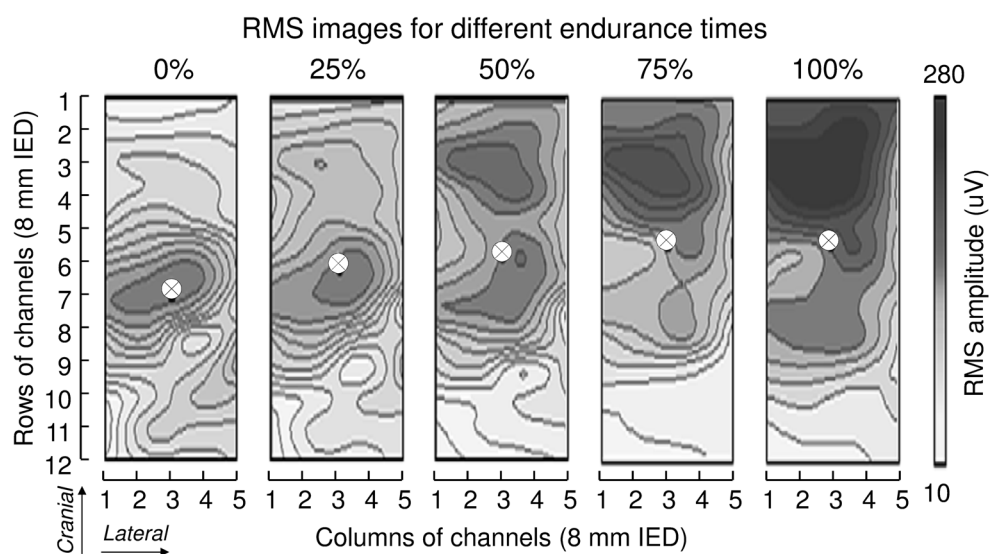


Figure 4. Greyscale images created with the RMS amplitude of single-differential, surface EMGs collected from the trapezius muscle while a single, healthy subject held his shoulder at 90° abduction until failure. Each image corresponds to a relative instant of the positional, endurance task (from left to right: 0%, 25%, 50%, 75% and 100%). White, crossed circles indicate centre of gravity of the RMS distributions; i.e. the weighted average of columns and rows in the grid. Modified from Farina *et al* (2008a) with permission.

contemporary study to that of Farina *et al* (2008a) further substantiated the occurrence of regional variations in muscle activity during fatiguing contractions. With grids of 130 electrodes (13×10 electrodes), Holtermann *et al* (2008) observed a local decrease in CV along the trapezius cranio-caudal direction while subjects sustained isometric contractions at different effort levels. Interestingly, changes in CV did not manifest consistently across subjects (figure 5). While CV decreased along the whole grid for some subjects (subject 1 in figure 5), for others it decreased mainly cranially or caudally (see subjects 2 and 3 in figure 5, respectively). These authors also reported local variations in CV for the biceps brachii muscle; the probability of identifying decreased CV during sustained, elbow flexion contraction differed along the muscle medio-lateral direction. Collectively, these results and results from other studies, assessing different muscles (Zijdewind *et al* 1995, Gallina *et al* 2011, Watanabe *et al* 2013), suggest fatigue is more likely to affect muscles locally rather than globally.

The second insight provided by the *multi-channel approach* concerns the mechanisms causing or anticipating muscle fatigue. Variations in surface EMG descriptors shown in figures 4 and 5 refer to changes occurring in directions transverse to muscle fibres; i.e. they denote regional variations in muscle activity during fatigue. These regional variations in muscle activity have been interpreted as regional manifestations of muscle fatigue (Gallina *et al* 2011, Watanabe *et al* 2013). In the course of a fatiguing contraction, prior to a decline in muscle force (Holtermann *et al* 2008) or inability to sustain a given joint position (Farina *et al* 2008a), EMGs collected in different muscle regions change differently (figures 4 and 5). An interesting observation is the potential, functional relevance of such regional myoelectric manifestations of fatigue. Changes in the spatial distribution of EMG descriptors were observed to correlate positively with the duration along which subjects were able to sustain

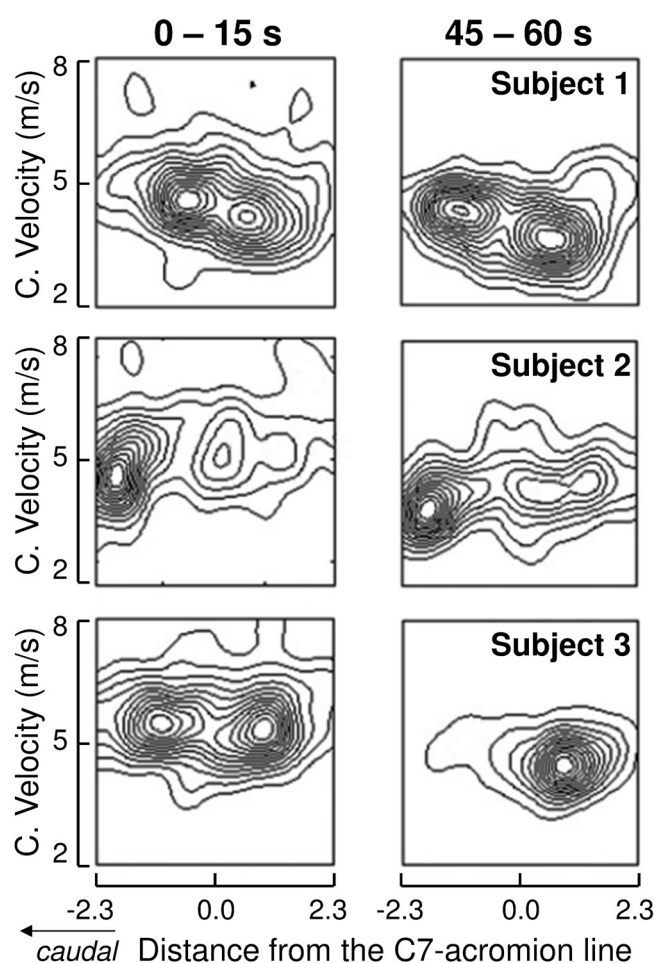


Figure 5. Spatial distributions of CV estimates obtained along the trapezius cranio-caudal direction. Dense lines indicate high probability (incidence). Estimates are shown during the first and last 15 s of 60 s contractions at 50% MVC. Data from three subjects are shown. The cranio-caudal location where CV estimates were taken is given relatively to the anatomical midpoint of a line between the C7 vertebra and the acromion. Modified from Holtermann *et al* (2008) with permission.

a constant force level (Falla and Farina 2007, Holtermann *et al* 2010). Interestingly, subjects exhibiting more expressive regional variations in muscle activity seem to have a greater potential for sustaining a given workload (Farina *et al* 2008a). Similar findings were observed for EMGs collected intramuscularly from the gastrocnemius muscle (McLean and Goudy 2004). The physiological mechanisms explaining the association between better endurance and greater variations in muscle activity are so far subject to speculation. One possibility is the optimisation of extracellular environment (i.e. expediting the removal of fatigue by-products) through the local modulation of blood flow. Kouzaki *et al* (2003), for example, reported a significant association between alternate activation of knee extensors and changes in blood volume during sustained, isometric contractions. As shown in figure 6, the amplitude of integrated EMGs collected from rectus femoris changes in an opposite fashion when compared to the amplitude of EMGs detected from the vastii. Most importantly, decreases/increases in

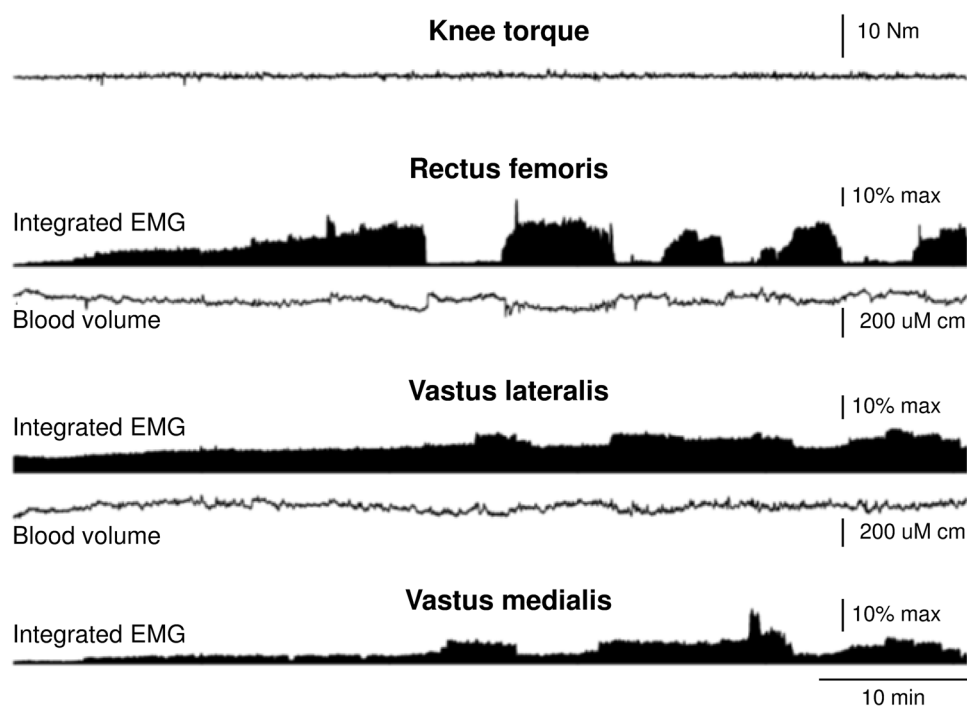


Figure 6. Typical example of knee torque and of EMGs integrated over 1 s epochs, after full-wave rectification, for rectus femoris and for vastus lateralis and medialis muscles, respectively from top to bottom. Traces denoting the blood volume profile for rectus femoris and vastus lateralis muscles are shown just below to the integrated EMGs. Data was collected during sustained, knee extension at 2.5% of maximal voluntary contraction (MVC) for 60 min. Scales for the surface EMG are expressed in relation to the maximal amplitude value obtained for integrated EMGs collected at maximal, isometric contractions. Modified from Kouzaki *et al* (2003) with permission.

rectus femoris activity are associated with increases/decreases in the muscle blood volume (see traces below integrated EMGs shown in figure 6). In an attempt to address the relevance of such alternate, synergistic activity, Kouzaki and Shinohara (2006) further assessed the association between alternate muscle activity and force production in fatiguing contractions; they indeed observed smaller decreases in knee extension torque for subjects showing more frequent periods of alternate muscle activity. Even though the association between modulation of blood flow and alternate activity within individual muscles seems yet untested in the literature, it is possible that regional modulation of blood flow contributes to explaining why greater variation in muscle activity correlates with better endurance (Falla and Farina 2007, Holtermann *et al* 2010).

Motor unit rotation or substitution is another possibility accounting for the notion that greater spatial variability in surface EMGs is associated with delayed fatigue. Both terminologies have different meanings (Westgaard and de Luca 1999). Substitution corresponds to the recruitment of MUs to replace active, tonically discharging MUs of slightly lower recruitment thresholds. Rotation, on the other hand, indicates different MUs are periodically de- and recruited in an alternate fashion throughout a sustained contraction. In spite of semantic differences, both substitution and rotation represent a mechanism for prolonging the ability of individual muscles to sustain a given force; the burden of fatigued MUs is taken up by fresh

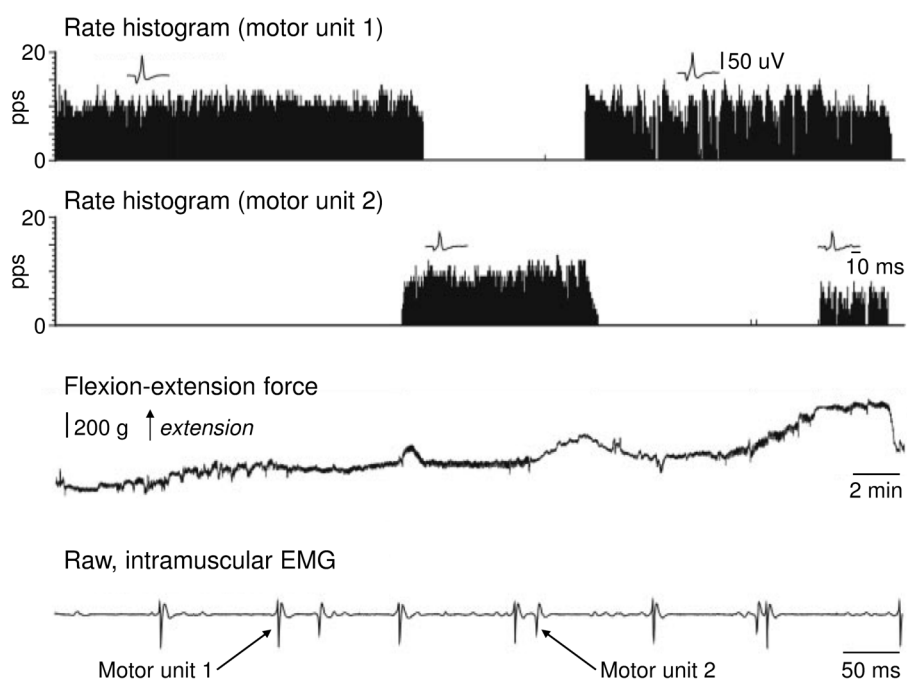


Figure 7. Representative record showing rotation in a pair of MUs recorded from extensor carpi radialis. A, rate histogram showing instantaneous discharge rate of motor unit 1 (top) and of motor unit 2 (bottom). B, isometric force of wrist extension. C, expanded view of intramuscular EMG collected with needle electrode, showing examples of discharges for the two MUs whose rate histograms are shown in panel A. Modified from Bawa *et al* (2006) with permission.

MUs. Substitution and rotation have been observed for an assortment of muscles, small and large, spanning distal and proximal joints and in different situations, constant-force and-force varying contractions (Fallentin *et al* 1993, McLean and Goudy 2004, Bawa and Murnaghan 2009, Manning *et al* 2010). An example of MU rotation is shown in figure 7 for the extensor carpi radialis muscle. The first MU fires regularly at ~10 pps from the beginning of the figure. At about 10 min later, MU 2 starts to discharge tonically while unit 1 ceases firing. A few minutes later unit 1 resumes firing and the MU 2 falls silent and then starts firing again after ~8 min. The controversy with the concept of MU substitution and rotation is the apparent violation of the size principle (Westgaard and de Luca 1999). If MUs are recruited according to their size, which is strongly associated with their recruitment threshold, then, the recruitment of a higher threshold unit should be not accompanied by the derecruitment of an already active, tonically discharging unit. Alterations to the intrinsic properties of motor neurons (e.g. slowing inactivation of ionic channels, slowing of the Na^+ - K^+ pump and persistent inward currents) have been therefore suggested to explain the rotation/substitution of MUs (Bawa and Murnaghan 2009), as these changes would affect the motor neuron recruitment threshold; note e.g. that MUs 1 and 2 in figure 7 are recruited and derecruited at different force levels throughout the contraction. Consistent with this view, Manning *et al* (2010) observed the excitability of a motor neuron increased progressively after it ceased firing and after substitution took place during a sustained contraction.

An alternative, or more likely complementary, view to rotation triggered by intrinsic properties is the spatially differentiated distribution of net excitatory input to motor neurons.

EMGs collected intramuscularly from the small hand muscles (Zijdewind *et al* 1995) and from the large calf muscles (McLean and Goudy 2004) suggest indeed that motor neurons serving fibres in different muscle regions may participate in rotation during fatiguing contractions. Even though not at the level of single MUs, changes in the distribution of the amplitude of surface EMGs detected with the *multi-channel approach* with fatigue (Farina *et al* 2008c, Holtermann *et al* 2008) are consistent with the idea that rotation may extend to different regions within muscles; i.e. the *regional rotation* of MUs. This notion of *regional rotation* of MUs is not necessarily in contradiction with the size principle. Supposing all motor neurons serving an individual muscle receive the same synaptic input, the intrinsic changes in motor neuron properties triggering *regional rotation* would affect to different extents motor neurons serving different muscle regions, otherwise no regional variations in muscle activity would be expected. The possibility of *regional rotation* triggered exclusively by regional changes in motor neurons' intrinsic properties seems however unlikely as in such case no differential activation of distinct muscle regions would seem possible, unless MUs of different sizes were confined at specific muscle regions. For example, the selective recruitment of different trapezius regions, crucial for controlling different scapular movements (Holtermann *et al* 2009), would appear physiologically unviable under the assumption that all motor neurons serving the trapezius muscle receive the same input. Accepting, on the other hand, that the synaptic input may distribute differently across pools of motor neurons serving the same muscle (Desmedt and Godaux 1981), one may advance the spatial differentiation of net excitatory input could contribute to the *regional rotation* of MUs during fatigue. In this case, rotation and substitution occurring within pools of motor neurons receiving a common input would be triggered by intrinsic changes in the motor neuron excitability (Manning *et al* 2010), without violating the size principle (see page 1730 in Henneman 1968). *Regional rotation*, if verified, would most likely result from altered distribution of excitatory and inhibitory inputs to different pools of motor neurons. Although we understand the concept of *regional rotation* advanced here may appear speculative, we decided nevertheless to bring it to the readers' attention; the verification of *regional rotation* would advance our current knowledge on the determinants of muscle fatigue. Moreover, our current technology allows for devising experiments aimed at addressing this open issue. The *multi-channel approach* does seem to provide an additional view to myoelectric manifestations taking place within different sub-volumes of individual muscles prior and during fatigue, otherwise unobserved with the conventional, localized EMG sampling.

2.1.3. Considerations on muscle architecture. With advances in imaging technology, changes in muscle structure in a number of situations, including fatigue, maybe studied in detail. This section is not aimed at describing the architectural alterations the muscle undergoes with fatigue. Here we are rather focused on providing readers with indications on how these structural changes may affect the surface EMGs. The relationship between changes in muscle architecture and changes in EMG descriptors is largely unexplored and, therefore, in the following paragraphs we briefly develop this argument based on our currently limited understanding.

A first note to point out is that different muscles have different architectures, each likely demanding a specific approach to the study of myoelectric manifestation of fatigue. Muscles may be classified according to the mechanical arrangement of their fibres with respect to the muscle tendon (Lieber and Fridén 2000). From a surface EMG perspective, a more relevant classification should however be based on the arrangement of muscle fibres with respect to the skin surface. Two categories of muscles emerge in this case: (i) muscles with fibres residing in planes parallel to the skin or *skin-parallel fibreed* muscles; (ii) muscles pinnate in the depth

direction or *in-depth pinnate muscles*. In the former case, electromyographic features of crucial relevance for the study of muscle fatigue may be assessed (see section 2.1.1 CV). Care is however necessary to avoid potential misalignment between electrodes and fibres; in the case of misalignment, CV may be estimated after correcting for the actual fibres' direction with methods specifically designed for the estimation of muscle fibres' direction from the surface EMGs (Grönlund *et al* 2005, Gallina and Vieira 2015). More specifically, for *skin-parallel fibred muscles*, surface EMGs may be detected from skin regions covering the same group of fibres (electrodes positioned parallel to muscle fibres) or different groups of fibres (electrodes positioned transverse to the muscle fibres). As commented earlier in the previous subsection, EMGs collected in parallel and transverse directions to the fibres of *skin-parallel fibred muscles* have different meanings. Some examples of muscles that may fall within this category are trapezius, biceps brachii, brachioradialis, abductor pollicis brevis, abductor digiti minimi and the vastus medialis and vastus lateralis. Even though the vastus muscles show some degree of pinnation in the depth direction (Blazevich *et al* 2006), action potential propagation can be clearly observed for each of these quadriceps' heads. From these *skin-parallel fibred muscles*, regional variations in activity and in CV may be both assessed with *the multi-channel approach* in fatiguing contractions.

Most fibres within *in-depth pinnate muscles*, on the other hand, do not lay in planes parallel to the skin; according to the *in-depth pinnate* definition, fibres run from the deep to the superficial muscle region. The relative arrangement between fibres and electrodes for an *in-depth pinnate muscle* is shown in figure 8(a). This schematic representation illustrates a parasagittal view of electrodes and fibres for the gastrocnemius muscle, as observed with ultrasound imaging (Hodson-Tole *et al* 2013). Gastrocnemius fibres extend from the deep to the superficial aponeurosis (thin, black lines in figure 8b). Electrodes located at skin regions covering the muscle superficial aponeurosis are located over different fibres; from the sixth to the 15th pair of electrodes in figure 8(a). Considering the amplitude of single-differential (i.e. bipolar) action potentials decreases steeply with the distance between the action potentials themselves and the pair of surface electrodes (Lynn *et al* 1978), it follows that different pairs of electrodes sample from different gastrocnemius fibres. The contribution of action potentials travelling along proximal fibres is for example expected to be much greater to EMGs detected proximally than distally. Our group obtained indeed theoretical and experimental data suggesting that single-differential, surface EMGs collected from the gastrocnemius muscle are somewhat selective (Vieira *et al* 2010, 2011, Mesin *et al* 2011). It is our experience that action potentials of individual MUs appear clearly in surface EMGs detected by at most five consecutive electrodes (1 cm inter-electrode distance) positioned along the gastrocnemius proximo-distal axis (figure 8(b); figure 7 in Vieira *et al* (2010); figures 3 and 5 in Vieira *et al* (2011)). Given the gastrocnemius *in-depth pinnate architecture*, variations in the amplitude and spectrum of surface EMGs detected along the muscle longitudinal or transverse direction are thus unlikely affected by the anatomical factors (i.e. innervation zone and tendon regions) accounting for the variations in surface EMGs detected in directions parallel to the fibres of *skin-parallel fibred muscles* (see section 3.1.2). Conversely, differences between surface EMGs detected from different gastrocnemius region are most presumably due to regional variations in activity; that is, changes in activity between different, proximo-distal or medio-lateral, gastrocnemius regions. Although commented for the gastrocnemius muscle, these considerations potentially hold for other muscles with the *in-depth pinnate* architecture, among which tibialis anterior, biceps femoris and soleus.

Questions of relevance for the study of muscle fatigue therefore arise for *in-depth pinnate muscles*: is it appropriate to consider CV for the assessment of fatigue-induced changes in these muscles? (ii) if not, are other EMG descriptors sensitive to the myoelectric manifestations of

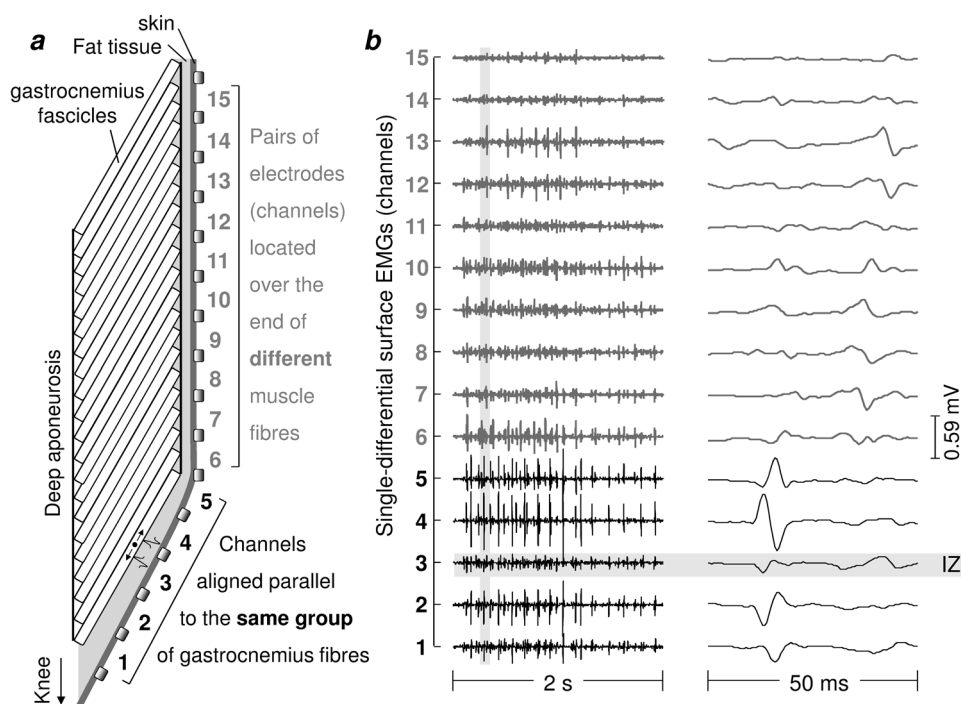


Figure 8. Representation of how the orientation of gastrocnemius fascicles influences EMGs recorded at different proximal-distal regions. (a) Orientation of fascicles in the proximal muscle region leads to myoelectric activity from different fibres being represented in different channels of the electrode array. At the very distal muscle extremity fascicles are orientated parallel to the skin; channels lie along fascicles and propagation of action potentials is visible in this somewhat small region. (b), Myoelectric activity from one participant recorded during a 2 s period of standing (left panel), with signals from a 50 ms portion of this time (grey block) shown in the right panel. In the right panel signal propagation is visible and highlighted in channels in 1–5, with the innervation zone evident in channel 3. Modified from Hodson-Tole *et al* (2013).

fatigue? With respect to the first question, the most likely answer is no. CV is quantified as the ratio between inter-electrode distance and the delay estimated between surface EMGs detected by consecutive electrodes. Delay estimates are highly dependent on the alignment between electrodes and fibres; the more the fibres and electrodes are in parallel direction the closer the estimate reflects the actual delay resulting from action potential propagation (Farina *et al* 2002a; see also section 2.1.1.1). As discussed above, the parallel alignment between fibres and electrodes is not possible for most fibres within *in-depth pinnate muscles*. For the example shown in figure 8, only electrodes covering the very distal region of *in-depth pinnate muscles* maybe parallel to the muscle fibres (see the first five pairs of electrodes in figure 8(a)). As a consequence, propagation can be only appreciated for the most distal surface EMGs (figure 8b). Indeed, with a grid of 128 (16 × 8) electrodes, Gallina *et al* (2013a) obtained physiological estimates of CV only for electrodes positioned at the most distal gastrocnemius region. Physiological estimates of CV may be estimated from the distal region of the tibialis anterior muscle as well (Houtman *et al* 2003). Obtaining physiological CV estimates for the soleus muscle seems however unlikely (Rainoldi *et al* 2004). The point here is that obtaining physiological estimates of CV is not straightforward for these muscles and if physiological

estimates are obtained, they reflect the CV of a small and perhaps unrepresentative muscle portion. From surface EMG, for example, ascertaining whether the CV estimates from the distal region of gastrocnemius and tibialis anterior correlates with estimates from the muscle proximal region is not viable. In spite of the potentially limited, yet unverified representativeness of CV estimates, myoelectric alterations with fatigue seem nevertheless to manifest in surface EMGs detected from *in-depth pinnate muscles* (Sadamoto *et al* 1983, Weist *et al* 2004, Mademli and Arampatzis 2005, Ishikawa *et al* 2006, Mitsukawa *et al* 2009). Recently, Mesin *et al* (2011) specifically assessed simulated and experimental signals to test for whether surface EMGs from the gastrocnemius muscle reflect the changes in amplitude and spectral features typically occurring during fatigue. Decreases in EMG median frequency were observed in both simulated and experimental conditions and for different degrees of *in-depth pinnation* (see figure 6 in Mesin *et al* (2011)). Interestingly, these authors observed greater variability for the amplitude and spectral descriptors of experimental than of simulated EMGs. It was suggested that factors not controlled for during simulations could have accounted for the greater variability observed in the experimental signals with fatigue (Mesin *et al* 2011), with the regional variations in activity within and between plantar flexors (Tamaki *et al* 1998, McLean and Goudy 2004) being the most likely candidate explaining these discrepancies. In agreement with this view, our group observed local changes in the median frequency of surface EMGs collected with a large grid of electrodes from the gastrocnemius muscle (figure 9) while subjects exerted, until exhaustion, bouts of isometric plantar flexion contractions (5 s contraction at 50% MVC, 5 s rest). Similarly, local changes in surface EMG with fatigue have been recently reported for the *in-depth pinnate*, rectus femoris muscle (Watanabe *et al* 2013). While the validity of CV estimates remains unverified, the amplitude and spectral descriptors of surface EMGs detected with the *multi-channel approach* seem highly sensitive to myoelectric manifestations of fatigue in *in-depth pinnate muscles*. With the progressive increase in popularity of multi-channel systems, we foresee the appearance of high-quality studies specifically designed to address relevant open issues relating changes in muscle architecture to changes in muscle activation with fatigue.

The *multi-channel approach* constitutes a promising tool for unveiling the causes and consequences of alterations in muscle structure with fatigue. Changes in muscle structure occurring during fatiguing contractions may affect EMGs directly and indirectly. By direct, we mean alterations in the EMG descriptors resulting directly from structural muscle changes. For example, Mesin *et al* (2011) have shown the distribution of EMG amplitude changes markedly with the degree of pinnation in the depth direction; the action potential of more pinnate fibres appears with greater amplitude and at a more localized skin region, centred nearby the fibres' superficial attachment (see figures 2–4 in Mesin *et al* (2011)). With ultrasound imaging, recent studies reported a significant alteration of the architecture of leg muscles with fatigue, even though with conflicting results. While some authors observed an increase in the pinnation angle of the leg muscle with fatigue (Kubo *et al* 2001, Brancaccio *et al* 2008), others did not (Ishikawa *et al* 2006, Mitsukawa *et al* 2009). In spite of methodological differences potentially accounting for disparities between studies (e.g. muscle studied, time when measurements were taken, etc), these results suggest the changes in muscle architecture may explain, at least in part, the myoelectric manifestations of muscle fatigue. How much architectural changes affect EMGs directly is currently an open issue. Structural alterations with fatigue may also affect EMGs indirectly; that is, changes in EMG descriptors may result from physiological responses triggered by architectural changes with fatigue. More specifically, for instance, Kubo *et al* (2001) observed an increased compliance of the tendon structures in the knee extensor muscles after a fatigue test, accompanied by a significant ~10 ms increase in the electromechanical delay (i.e. delay between the onset of moment development and the onset

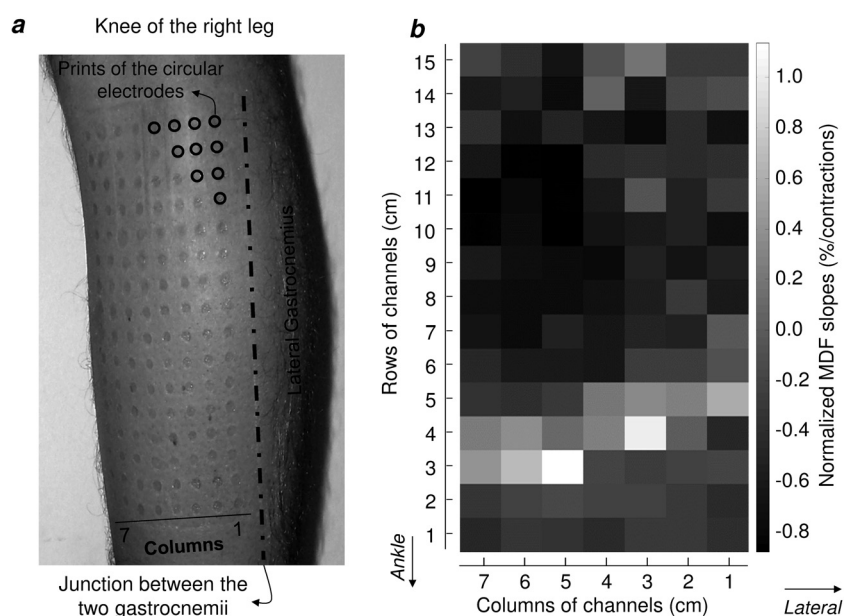


Figure 9. (a) shows the position of 128 (16 rows, 8 columns) electrodes at skin regions covering exclusively the medial gastrocnemius muscle, as verified by ultrasound scanning. The last column of electrodes was discarded for the synchronous acquisition of force data and EMGs. Prints on the skin correspond to vestiges of the conductive paste left over immediately after the grid of electrodes was removed. (b) Shows the variations in EMG bandwidth while a single subject sustained repeatedly 50% MVC bouts of isometric plantar flexion until exhaustion. The coordinates of each pixel correspond to the location of the channels along the rows and the columns in the matrix, whereas the grey intensity represents how strongly the median frequency changed with fatigue (i.e. the darker the pixel the stronger the median frequency values decreased from the beginning to the end of contraction). Modified from Gallina *et al* (2011) with permission.

of myoelectric activity). Unfortunately, these authors did not report any results on variations in muscle activity with fatigue. It is however possible that changes in tendon compliance may lead to a redistribution of activity within the muscle, optimising force development and transmission. In line with this view, Avancini *et al* (2015) detected EMGs with greater amplitude over a significantly larger proximo-distal gastrocnemius region when subjects performed isometric plantar flexion contractions with the knee at a flexed rather than extended position. Interestingly, the proximo-distal redistribution of myoelectric activity was not associated with proximo-distal differences in gastrocnemius architecture. Avancini *et al* (2015) suggested that Achilles tendon receptors could have mediated the more spatially diffused activation of gastrocnemius volume, which was expected to better compensate for the increased tendon compliance observed at more flexed knee positions (Herbert *et al* 2002, De Monte *et al* 2006). Notwithstanding the relevance of understanding whether changes in surface EMGs observed with fatigue may result from changes in muscle architecture rather than, or in addition to, from changes of physiological origin, so far no systematic reports on the relationship between muscle architecture and activation with fatigue were found. The recent development of electrodes transparent to ultrasound (Botter *et al* 2013) does however provide a suitable means for addressing this issue. After all, it seems therefore the *multi-channel approach* has a great

potential to provide a comprehensive view of electrophysiological muscle alterations with fatigue, regardless of anatomical differences between muscles.

2.2. Single motor unit level

As reported in the previous sections, surface EMGs has been often analysed as an interference signal and different mathematical descriptors have been used to track changes in surface EMGs during the development of muscle fatigue. More common techniques are power spectrum or time-frequency distribution (Lindstrom and Magnusson 1977, De Luca 1984, Merletti *et al* 1990), high-order power spectral moments (Lo Conte and Merletti 1995), spike analysis (Gabriel *et al* 2007), fractal dimension (Ravier *et al* 2005), and several variations of these methods (Mesin *et al* 2009).

In the last years, the limitations of these approaches emerged. The main attention focused on the limitations that apply to inferences on EMG and movement control when the *classical approach* is used (Farina *et al* 2004a, 2014) but the same considerations are true in the study of muscle fatigue (Farina and Holobar 2016).

The main reason for these limitations is that global signal features extracted from the interference EMGs are influenced by both central and peripheral properties of the neuromuscular system (Farina *et al* 2002a, Dimitrova and Dimitrov 2003). Surface EMG is, in fact, the sum of action potentials generated in muscle fibres belonging to active MUs and consequently, it contains information about the synaptic inputs received by the motor neurons and about the muscle fibre electrical properties as shown in the following model (Farina *et al* 2014):

$$s(t) = \sum_{i=1}^M \sum_{j=-\infty}^{+\infty} \varphi_i(t) \delta(t - t_{ij}) \quad (1)$$

where $s(t)$ is the recorded EMG signal, M is the number of active MUs, $\varphi_i(t)$ is the shape of the action potential for the i th MU, and $\delta(t - t_{ij})$ is the delta function representing a MU discharge at the j th time (t_{ij}) at which the i th MU discharges.

From the model of surface EMG reported in equation (1) it is clear that it is not possible to extract, from the interference EMG signal, information only related either to the inputs from the central nervous system (represented by $\delta(t - t_{ij})$) or to the peripheral MU properties (represented by $\varphi_i(t)$). Amplitude variables, for example, depend on both the neural drive (increase when the discharge rates or the number of recruited MUs increase) and the peripheral properties (the energy of the action potentials increases with the decreasing of CV) without the possibility of distinguishing between the two effects. Similarly, frequency variables are influenced by MU recruitment, tissue filtering, and CV of muscle fibres (Dimitrov and Dimitrova 1998); CV estimated from surface EMGs is influenced by MU recruitment and discharge patterns, and by the fibre membrane properties of the active MUs (Gazzoni *et al* 2001, Farina *et al* 2004a, McGill and Lateva 2011).

Figure 10a shows an example of EMGs detected from the biceps brachii during a 15% MVC isometric contraction held for 10 min: the recruitment of progressively larger MUs from the beginning to the end of the contraction can be recognized. Figure 10(b) shows the time course of global variables: ARV, MNF, and CV estimated from non-overlapping signal epochs of 1 s for three different contraction levels: 5%, 10% and 15% MVC. In the case of 15% MVC it is possible to clearly identify (approximately at second 300) an increase of CV after the initial decrease due to fatigue; the same trend even if less evident is shown by MNF. The increase of CV and MNF can be explained, on the basis of the visual inspection of the

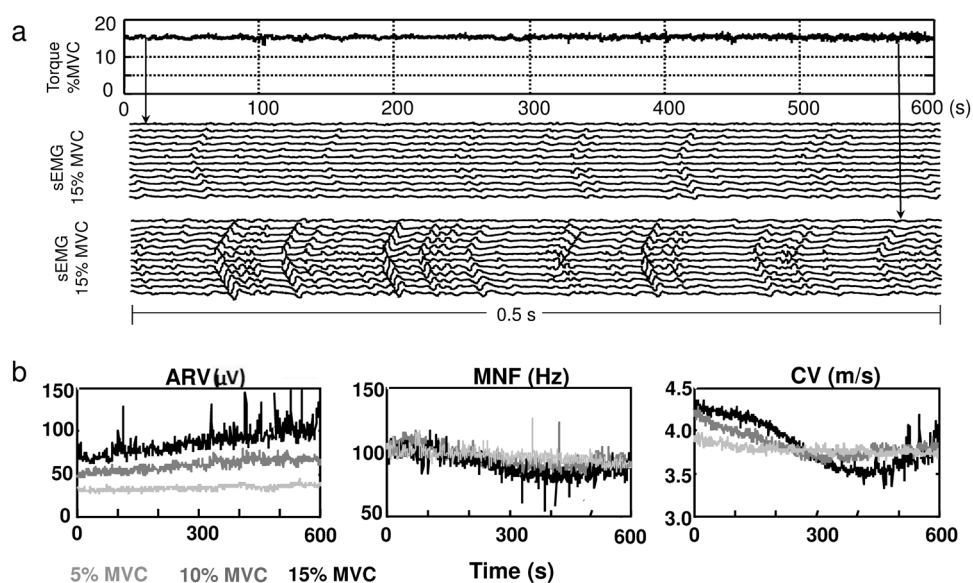


Figure 10. Example of the time course of global variables estimated from sEMG detected from the biceps brachii during isometric contractions held for 10 min (a) Torque time course and two 0.5 s epochs of the sEMG signals at the beginning and at the end of the contraction at 15% MVC. While torque remains constant, in the surface EMG it is possible to observe the recruitment of new MUs from the beginning to the end of the contraction. (b) Time course of global variables for different contraction levels (5%, 10%, 15% MVC).

raw signals, with the recruitment of new larger MUs (with higher CV) in order to maintain the requested force level when force generation capability of initially recruited MUs decrease because of fatigue. This example highlights that global variables are influenced by both membrane properties and central MU control suggesting that caution must be used in the interpretation of their trend during fatiguing contractions. However, the only way to verify such an interpretation is to gain access to MU firing patterns.

In order to highlight the limitation of time-frequency methods in the study of fatigue, Farina *et al* (2014) studied, in simulated conditions, the effect of recruitment/derecruitment of MUs and changes of CV due to fatigue on surface EMG variables estimated with a time-frequency method. During simulated ramp contractions, MUs were recruited and de-recruited according to the size principle with higher threshold MUs having higher conduction velocities. Fatigue was simulated by the decreasing of CV of active MUs during the contraction and by the recruitment of new MUs. No association was found between the estimates of instantaneous MNF and the recruitment and derecruitment of MUs. Despite significant changes in the recruited MU pool, the instantaneous MNF of the surface EMGs remained relatively constant during each ramp. Moreover, the instantaneous MNF was lower after the fatiguing contraction despite the higher MU activity (figure 11). These results demonstrate that global spectral estimator of surface EMG is not sensitive to changes in motor unit population during fatigue.

On the basis of these pieces of evidence, study of myoelectric manifestations of fatigue is progressively moving from the analysis of global features extracted from the interference surface EMGs to the identification and analysis of the single MUs. The use of multi-channel

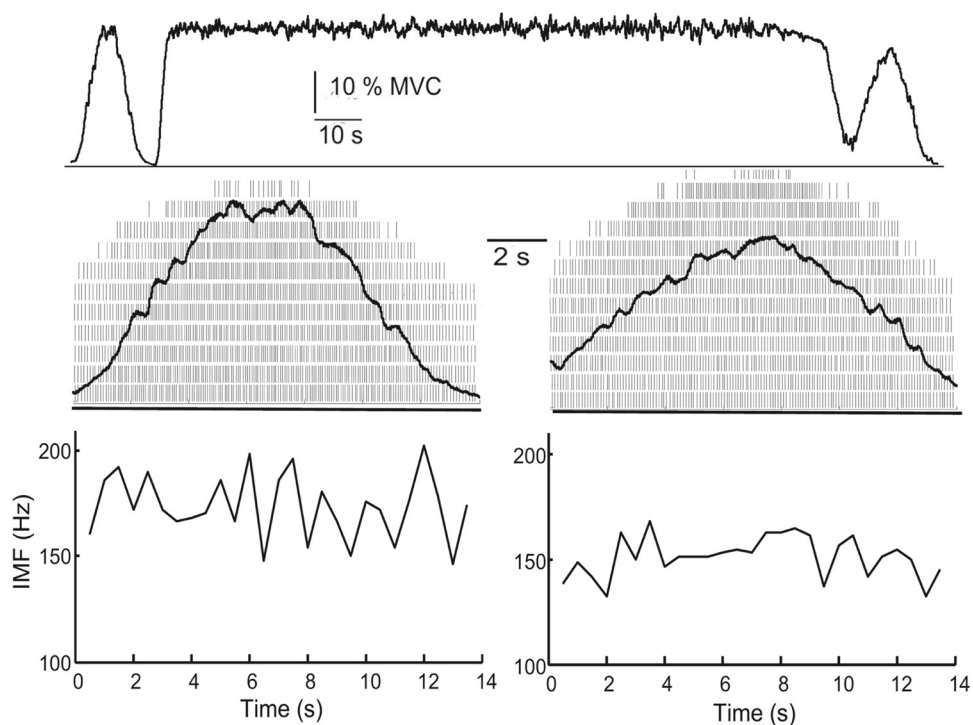


Figure 11. Example of a simulation study of sensitivity of surface EMG power spectral frequencies to motor unit activity. A protocol was simulated including an up-down ramp contraction to 30% of MVC force, a 140s contraction sustained at 30% MVC force, and a final ramp contraction similar to the 1st one (on the top). The model predicted a decrease in peak force for the 2nd ramp contraction after the fatiguing contraction and more motor unit activity during the 2nd ramp contraction. Instantaneous MNF was computed from the spectrogram of the surface EMG signals simulated during the 2 ramp contractions. Instantaneous MNF remains relatively constant during the ramps. Modified from Farina *et al* (2014) with permission.

detection systems together with advanced processing techniques allows separating the neural information (MU recruitment/de-recruitment and discharge characteristics) from the peripheral information (membrane properties and MU anatomy) in the surface EMGs as showed in figure 12 and described in the following.

2.2.1. Surface EMGs decomposition. Because of the filtering effect of the volume conductor and the higher number of detected MUs, the identification of single MUs from the surface EMGs is more challenging than from intramuscular EMGs. In order to counteract these effects, early studies addressed the identification of single MUs in surface EMGs with two approaches: the spatial filtering and the spatial sampling. Spatial filtering was used to increase the spatial selectivity of the recording system and then reduce the number of MUs contributing to the signal (Reucher *et al* 1987a, 1987b, Disselhorst-Klug *et al* 1999). Spatial sampling (Masuda *et al* 1985, Blok *et al* 2002) was used to increase the possibility to discriminate the action potentials of different MUs (Blok *et al* 2002, Zwarts and Stegeman 2003). In fact, the uniqueness of the skin representation of action potentials of single MUs is a necessary condition for decomposition. The larger is the number of recording locations, the lower is the

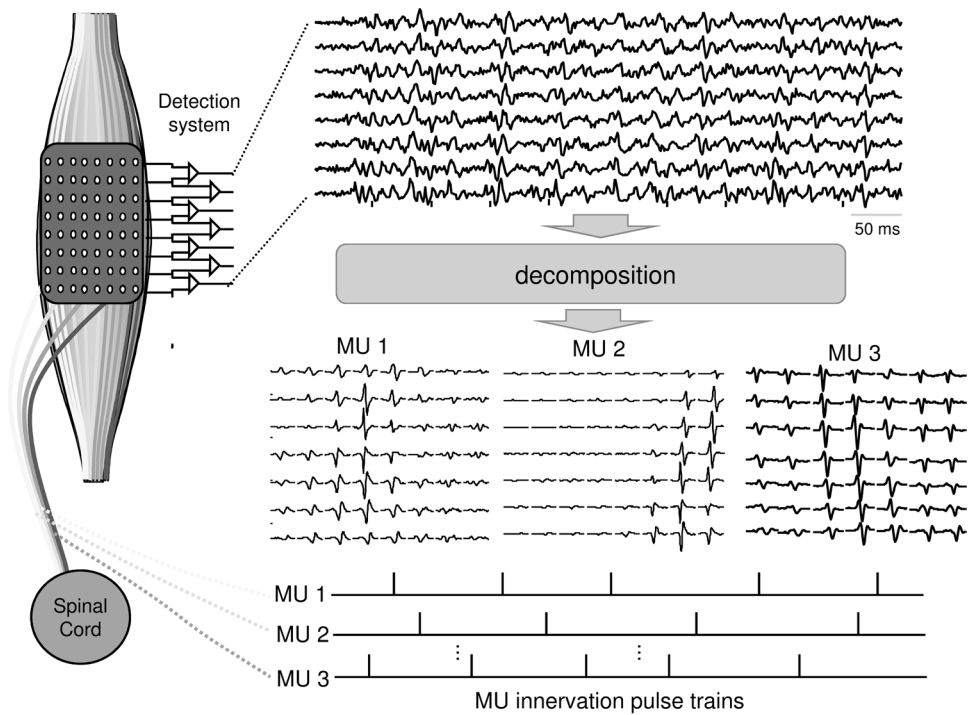


Figure 12. Schema of the process of decomposition of multi-channel surface EMGs. (a) Surface EMG are recorded from the muscle with a multi-channel detection system (8×8 electrodes in the figure) with the columns parallel to the fibre direction. (b) Segment of 500ms duration of bipolar EMG detected by one column of the grid selected as example. (c) spatio-temporal representation of three representative MUs extracted from the interference signal; for each motor unit it is possible to estimate its CV to obtain information about membrane properties and track changes during fatigue. (d) Estimated discharge patterns for the three MUs provide information about central control and allow to study neural changes during fatigue.

likelihood that the detected multi-channel action potentials are similar among MUs (Kleine *et al* 2007). In order to quantify this observation, Farina *et al* (2008b) examined the capacity of different electrode configurations (in terms of number, spatial configuration and spatial filtering) to discriminate the action potentials of single MUs in surface EMG recordings. Results showed that, in a population of simulated MUs, one bipolar recording allows the discrimination of less than 5% of the MUs (Farina *et al* 2008b). Similar results were obtained for experimentally detected MUs (Farina *et al* 2008b).

In some very specific experimental conditions (combining low contraction levels, spatial sampling, spatial filtering, and EMG feedback) single MUs can be extracted from surface EMGs recorded with multi-channel detection systems with simple processing techniques such as amplitude thresholding (Farina *et al* 2004a).

More advanced methods based on template matching, the same technique used for intramuscular EMG decomposition, have been proposed to identify few active MUs from the interference surface EMGs in less controlled conditions (Blok *et al* 2002, Gazzoni *et al* 2004, Kleine *et al* 2007). With this technique, MUAPs are detected in the signal using a threshold or a matching filter and then they are clustered on the basis of the shape of each identified action potential, taking advantage from the high number of recording locations to discriminate the

action potentials of different MUs. The results allow to obtain information about the recruitment/derecruitment of MUs and to characterize muscle fibre membrane and anatomical properties of single MUs (Gazzoni *et al* 2004, Kleine *et al* 2007). With these techniques it is possible to analyse single MUs at relatively high contraction levels and the information provided can be used to evaluate changes in the membrane properties of single MUs during sustained contractions.

The limitations of template-matching methods in the reconstruction of the complete firing pattern of active MUs motivated the development of surface EMG decomposition techniques based on blind source separation. Different methods have been developed and proposed in the last years in order to extract the complete firing pattern of MUs from interference EMGs (Holobar and Zazula 2003, 2007, De Luca *et al* 2006, Holobar *et al* 2009, 2010, 2014, Nawab *et al* 2010, Liu *et al* 2014, Negro *et al* 2016, Chen and Zhou 2016, Ning *et al* 2015). Once the discharge times of MUs are obtained from the complete decomposition, it is possible to extract the spatial-temporal representation of MUs by applying the spike-triggered averaging technique to the original surface EMGs.

Figure 13 shows an example of complete decomposition of a signal recorded from the abductor pollicis brevis during repetitions of an isometric force ramp contraction. Different MUs, depicted in different colors, are active for different durations. Thus, they demonstrate different levels of fatigue. The average CV of MUs 1–7 decreased across different contractions whereas the CV of MUs 8 and 9 remained constant from the first to the 18th contraction when it start decreasing. Average MU discharge rates (DR) do not vary significantly over time (figure 13b). The action potentials of MUs 1–7 change significantly over the 27 contractions, while much smaller changes are observed for MUs 8 and 9. The same colour in figure 13 (a)–(c) denotes the same MU. In figure 13 (d), different colours denote different contractions.

2.2.2. Analysis of fatigue at single motor unit level. Using the techniques described in the previous section, research activity is progressively focusing on the study of fatigue at the level of single MUs in order to clarify some open questions about peripheral and central adaptations to fatigue. It is in fact generally accepted that fatigue is related to (1) peripheral changes at the level of the muscle (such as changes at the neuromuscular junction and the accumulation of metabolites) which result in a reduced ability of muscles to generate force and that are referred to as ‘peripheral fatigue’ and (2) to central factors (such as impaired cortico-spinal transmission to the spinal cord, reduced motor neuron excitability and firing frequency) which result in a reduced drive of the central nervous system to the motor neurons and that are referred to as ‘central fatigue’ (Gandevia 2001, Enoka *et al* 2011). However, the sources of muscle fatigue and evidence of central fatigue are still debated (Contessa *et al* 2016).

By using simple threshold-based techniques, Farina *et al* (2004b) conducted a study to get a deeper insight into the effect of ischemia on muscle fatigue. Several studies showed a decrease of mean power spectral frequency and average CV due to ischemia and interpreted these results as due to the accumulation of metabolic byproducts in the muscle. However, as stated before, average CV is also affected by MU recruitment-derecruitment and by the distribution of discharge rates and it does not provide direct indication on the modifications of fibre membrane properties in single MUs. In Farina *et al* (2004b) the similar relative changes in CV and mean power spectral frequency observed at the muscle level and at the level of single MUs confirm that a change in CV is the main phenomenon responsible for the observed modifications in surface EMG variables during sustained contractions.

With template matching techniques Gazzoni *et al* analyzed the CV of single MUs before and after a low-force sustained contraction during which they were not activated (Gazzoni *et al* 2005). The study showed that sustained contraction determines a decrease in CV of MUs

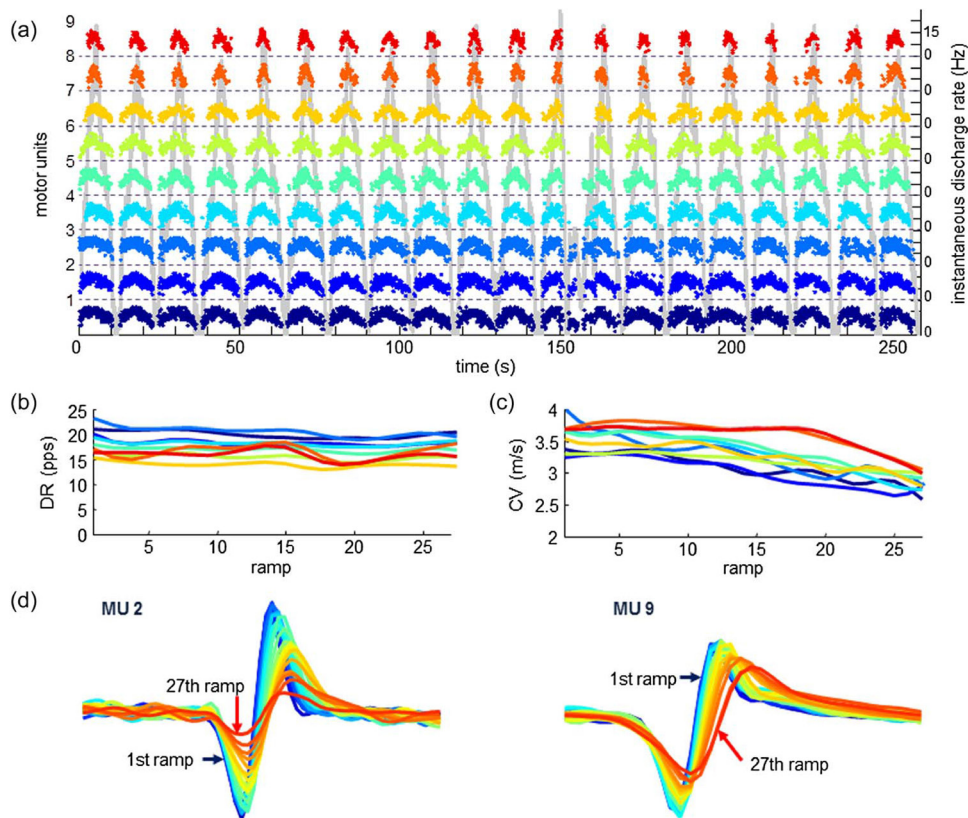


Figure 13. Discharge patterns of nine MUs identified from surface EMG detected from the abductor pollicis brevis during 27 repetitions of ramp contractions (from 0% to 10% MVC) are shown in (a). Each dot indicates a single MU discharge at a given instant, whereas its relative vertical displacement codes the instantaneous MU discharge rate. Discharge rate, and CV estimated for each MU are reported in the panels (b) and (c) respectively. Panel (d) shows the progressive changes of MUAP shape due to fatigue for two representative MUs detected by one pair of electrodes (from Farina and Holobar (2016) with permission).

partly independently of their activation and that the decrease of CV of MUs not recruited during the sustained contraction was similar to the decrease in average CV of the recruited MU pool. The analysis of changes of single MU CV adds new knowledge for the interpretation of changes in global surface EMG variables during fatiguing contractions. For example, consider the trend of global variables during submaximal endurance contractions reported in figure 10, where the average muscle fibre velocity shows a decrease followed by an increase. This phenomenon has been demonstrated to be related to the progressive recruitment of new MUs in order to sustain the contraction level (Gazzoni *et al* 2001, Houtman *et al* 2003). However, considering that CV decreases also in non-active MUs (Gazzoni *et al* 2005), the observed increase in average CV is probably smaller than that expected under the assumption of recruitment of fresh MUs. Moreover, results reported in Gazzoni *et al* (2005) underline at least two additional factors in the interpretation of changes of surface EMG amplitude with fatigue. It has been observed that, during submaximal fatiguing contractions, EMG amplitude increases but remains significantly lower than maximum at the endurance time (Fuglevand

et al 1993). Changed membrane properties of fibres in the muscle may result in modifications of the twitch force and then a decrease in discharge rates of newly recruited MUs for maintaining tetanic fusion with respect to the condition of fresh fibres. Moreover, decreased CV increases surface EMG amplitude cancellation (Keenan *et al* 2006, Farina *et al* 2008a). Even if methods for the analysis of single MU based on template matching techniques allow to get a deeper insight into peripheral changes of single MUs with fatigue, these methods are in general not able to separate action potentials of different MUs which overlap in time. Template matching methods therefore do not allow studying changes in central control due to fatigue because they provide an incomplete MU discharge patterns. Kallenberg and Hermens (2008) conducted a study in order to verify if the number of MUAPs per second obtained from an incomplete decomposition reflects the input of the central nervous system to a muscle. Results showed that such index reflects more selectively than frequency and amplitude global variables the central motor control at low contraction levels. However, the assessment of the complete firing patterns of MUs is needed to study in details the input of the central nervous system to a muscle.

Taking advantage from techniques recently developed and validated for the complete decomposition of EMGs (De Luca *et al* 2006, Farina *et al* 2010, Holobar and Farina 2014, Negro *et al* 2014) it is possible to investigate both central and peripheral changes during fatigue.

McManus *et al* (2015) investigated global surface EMG variables and single motor unit properties (considered collectively for each subject) to gain insight into changes due to muscle fatigue immediately after a sustained fatiguing contraction and in the following recovery period. Changes in surface EMG reflected changes in MUAP waveforms and authors obtained a strong correlation between the MUAP amplitude and the surface EMG RMS and between the MUAP duration and the surface EMG MNF. From the analysis of MU recruitment and firing rates, McManus and colleagues observed reduced MU firing rates and increased central drive, concluding that MU recruitment is favored over rate coding to maintain force during fatigue.

On the basis of the observation that specific adjustments can occur for specific MUs within a single muscle (Carpentier *et al* 2001), Farina *et al* (2010) studied the relationship between the adjustments of both peripheral and central characteristics exhibited by low-threshold MUs and the relative proportion of time each MU was active during fatiguing ramp isometric contractions. The relationship between changes in muscle fibre CV and recruitment and derecruitment thresholds were investigated; this requires a precise identification of firing pattern of MUs (provided only by complete decomposition) and reliable estimation of membrane properties (obtained using the *multi-channel approach* for the estimation of MU CV). The results showed that adjustments differed among low-threshold MUs and changes depended on the relative duration that each motor unit was active during the task.

In a recent work, Contessa *et al* (2009) investigated the interaction between motor unit firing behavior and muscle force during fatigue. By applying surface EMG decomposition (Nawab *et al* 2010) the authors analyzed MU firing patterns during repeated voluntary sub-maximal isometric contractions of the vastus lateralis muscle. The observed increase of MU firing rates and decrease of recruitment thresholds of all MUs together with simulated findings suggest the excitation to the motoneuron pool adjusts motor unit firing behavior to compensate for the changing of muscle force twitch.

3. Conclusions and future perspectives

Much remains to be understood about the central and peripheral processes that contribute to muscle fatigue.

This review analyzed the new knowledge and new issues open by more recent advances in surface EMG detection and processing, herein referred as *multi-channel approach*. Three main topics were considered and analysed: (i) the quantification of a physiological variable of marked interest to the study of fatigue, the propagation velocity, obtained with multi-channel detection systems and advanced algorithms; (ii) the assessment of regional, myoelectric manifestations of fatigue and the analysis of the relationship between changes in muscle architecture and changes in EMG descriptors; (iii) the analysis of surface EMGs at the level of single MUs with the possibility to obtain information about motor unit control and fibre membrane changes.

The *multi-channel approach* does seem to have great potential in providing a comprehensive view of electrophysiological muscle alterations taking place within different sub-volumes of individual muscles prior and during fatigue, that cannot be observed with the conventional EMG sampling. Moreover, it represents a promising tool for unveiling the causes and consequences of alterations in muscle structure with fatigue.

The possibility to extract information about individual MUs overcomes the difficulty of the interpretation of surface EMG global variables often prone to be erroneous. *multi-channel approach* can contribute to the understanding of the interactions between the nervous system and the muscle during fatiguing contractions.

However, many issues are still open and new ones emerged from the *multi-channel approach*. Among others the study of changes in fatigability following a treatment or training and the study of fatigue during dynamic contractions.

Addressing the first issue could open interesting perspectives in rehabilitation. For this purpose, the validation of currently available decomposition methods must be extended to verify whether they provide comparable results in different measurement sessions. A recent study (Martinez-Valdes *et al* 2015) assessed the intra and inter-session reliability of MU properties estimated from the decomposed surface EMGs. Results suggest that current techniques allow assessing central and peripheral motor unit properties within and across experimental sessions in a reliable way. This opens new possibilities in the evaluation of fatigue changes in longitudinal studies but additional research is required to confirm these results in a wider range of conditions.

With regards to the study of fatigue during dynamic contractions, in the last years, the scientific interest is more and more moving toward dynamic contractions also thanks to the availability of new wearable acquisition systems. The new insights obtained from the *multi-channel approach* highlight the importance of accounting for anatomical and geometrical factors on the detected surface EMGs. The importance of considering these factors increases in dynamic contractions. Moreover, to study fatigue during dynamic contractions at the level of single MUs, new algorithms are required. To date, surface EMG decomposition algorithms have been validated and used in isometric contractions. Only few works are published in literature in this field (Holobar *et al* 2008, De Luca *et al* 2015). With the progressive increase in popularity of multi-channel systems, we foresee the appearance of high-quality studies specifically designed to address relevant open issues relating muscle fatigue.

References

- Allen D G, Lamb G D and Westerblad H 2008 Skeletal muscle fatigue: cellular mechanisms *Physiol. Rev.* **88** 287–332
- Andreassen S and Arendt-Nielsen L 1987 Muscle fibre conduction velocity in motor units of the human anterior tibial muscle: a new size principle parameter *J. Physiol.* **391** 561–71

- Arendt-Nielsen L and Mills K R 1985 The relationship between mean power frequency of the EMG spectrum and muscle fibre conduction velocity *Electroencephalogr. Clin. Neurophysiol.* **60** 130–4
- Avancini C *et al* 2015 Variations in the spatial distribution of the amplitude of surface electromyograms are unlikely explained by changes in the length of medial gastrocnemius fibres with knee joint angle *PLoS One* **10** 1–6
- Barry B K and Enoka R M 2007 The neurobiology of muscle fatigue: 15 years later *Integr. Comp. Biol.* **47** 465–73
- Bawa P *et al* 2006 Rotation of motoneurons during prolonged isometric contractions in humans *J. Neurophysiol.* **96** 1135–40
- Bawa P and Murnaghan C 2009 Motor unit rotation in a variety of human muscles *J. Neurophysiol.* **102** 2265–72
- Bigland-Ritchie B, Donovan E F and Roussos C S 1981 Conduction velocity and EMG power spectrum changes in fatigue of sustained maximal efforts *J. Appl. Physiol. Respir. Environ. Exerc. Physiol.* **51** 1300–5
- Blazevich A J, Gill N D and Zhou S 2006 Intra- and intermuscular variation in human quadriceps femoris architecture assessed *in vivo* *J. Anat.* **209** 289–310
- Blok J H *et al* 2002 A high-density multichannel surface electromyography system for the characterization of single motor units *Rev. Sci. Instrum.* **73** 1887
- Botter A *et al* 2013 A novel system of electrodes transparent to ultrasound for simultaneous detection of myoelectric activity and B-mode ultrasound images of skeletal muscles *J. Appl. Physiol.* **115** 1203–14
- Brancaccio P *et al* 2008 Changes in skeletal muscle architecture following a cycloergometer test to exhaustion in athletes *J. Sci. Med. Sport* **11** 538–41
- Carpentier A, Duchateau J and Hainaut K 2001 Motor unit behaviour and contractile changes during fatigue in the human first dorsal interosseus *J. Physiol.* **534** 903–12
- Casale R *et al* 2009 Central motor control failure in fibromyalgia: a surface electromyography study *BMC Musculoskelet. Disord.* **10** 78
- Cescon C *et al* 2011 Geometry assessment of anal sphincter muscle based on monopolar multichannel surface EMG signals *J. Electromyogr. Kinesiol.* **21** 394–401
- Chen M and Zhou P 2016 A Novel Framework Based on FastICA for High Density Surface EMG Decomposition *IEEE Trans. Neural. Syst. Rehabil. Eng.* **24** 117–27
- Cifrek M *et al* 2009 Surface EMG based muscle fatigue evaluation in biomechanics *Clin. Biomech.* **24** 327–40
- Contessa P, Adam A and De Luca C J 2009 Motor unit control and force fluctuation during fatigue *J. Appl. Physiol.* **107** 235–43
- Contessa P, Puleo A and De Luca C J 2016 Is the notion of central fatigue based on a solid foundation? *J. Neurophysiol.* **115** 967–77
- Davies S W and Parker P A 1987 Estimation of myoelectric conduction velocity distribution *IEEE Trans. Biomed. Eng.* **34** 365–74
- Desmedt H E and Godaux E 1981 Spinal motoneuron recruitment in man: rank deordering with direction but not with speed of voluntary movement *Science* **214** 933–6
- De Luca C J 1984 Myoelectrical manifestations of localized muscular fatigue in humans *Crit. Rev. Biomed. Eng.* **11** 251–79
- De Luca C J *et al* 2006 Decomposition of surface EMG signals *J. Neurophysiol.* **96** 1646–57
- De Luca C J *et al* 2015 Decomposition of surface EMG signals from cyclic dynamic contractions *J. Neurophysiol.* **113** 1941–51
- De Monte G *et al* 2006 *In vivo* motion transmission in the inactive gastrocnemius medialis muscle-tendon unit during ankle and knee joint rotation *J. Electromyogr. Kinesiol.* **16** 413–22
- Dimitrov G V and Dimitrova N A 1998 Fundamentals of power spectra of extracellular potentials produced by a skeletal muscle fibre of finite length Part I: Effect of fibre anatomy *Med. Eng. Phys.* **20** 580–7
- Dimitrova N A and Dimitrov G V 2003 Interpretation of EMG changes with fatigue: Facts, pitfalls, and fallacies *J. Electromyogr. Kinesiol.* **13** 13–36
- Disselhorst-Klug C *et al* 1999 Non-invasive detection of the single motor unit action potential by averaging the spatial potential distribution triggered on a spatially filtered motor unit action potential *J. Electromyogr. Kinesiol.* **9** 67–72

- Drost G *et al* 2006 Clinical applications of high-density surface EMG: A systematic review *J. Electromyogr. Kinesiol.* **16** 586–602
- Enoka R M *et al* 2011 Unraveling the neurophysiology of muscle fatigue *J. Electromyogr. Kinesiol.* **21** 208–19
- Enoka R M and Duchateau J 2008 Muscle fatigue: what, why and how it influences muscle function *J. Physiol.* **586** 11–23
- Falla D and Farina D 2007 Periodic increases in force during sustained contraction reduce fatigue and facilitate spatial redistribution of trapezius muscle activity *Exp. Brain Res.* **182** 99–107
- Fallentin N, Jorgensen K and Simonsen E B 1993 Motor unit recruitment during prolonged isometric contractions *Eur. J. Appl. Physiol. Occup. Physiol.* **67** 335–41
- Farina D *et al* 2001 Estimation of single motor unit conduction velocity from surface electromyogram signals detected with linear electrode arrays *Med. Biol. Eng. Comput.* **39** 225–36
- Farina D *et al* 2002a Assessment of single motor unit conduction velocity during sustained contractions of the tibialis anterior muscle with advanced spike triggered averaging *J. Neurosci. Methods* **115** 1–12
- Farina D *et al* 2004c Reproducibility of muscle-fiber conduction velocity estimates using multichannel surface EMG techniques *Muscle Nerve* **29** 282–91
- Farina D *et al* 2006 Single motor unit and spectral surface EMG analysis during low-force, sustained contractions of the upper trapezius muscle *Eur. J. Appl. Physiol.* **96** 157–64
- Farina D *et al* 2008a Amplitude cancellation of motor-unit action potentials in the surface electromyogram can be estimated with spike-triggered averaging *J. Neurophysiol.* **100** 431–40
- Farina D *et al* 2008b Detecting the unique representation of motor-unit action potentials in the surface electromyogram *J. Neurophysiol.* **100** 1223–33
- Farina D *et al* 2008c The change in spatial distribution of upper trapezius muscle activity is correlated to contraction duration *J. Electromyogr. Kinesiol.* **18** 16–25
- Farina D, Holobar A, Gazzoni M, Zazula D, Merletti R and Enoka R M 2009 Adjustments differ among low-threshold motor units during intermittent, isometric contractions *J. Neurophysiol.* **101** 350–9
- Farina D *et al* 2010 Decoding the neural drive to muscles from the surface electromyogram *Clin. Neurophysiol.* **121** 1616–23
- Farina D, Cescon C and Merletti R 2002b Influence of anatomical, physical, and detection-system parameters on surface EMG *Biological cybernetics* **86** 445–56
- Farina D, Fortunato E and Merletti R 2000 Noninvasive estimation of motor unit conduction velocity distribution using linear electrode arrays *IEEE Trans. Biomed. Eng.* **47** 380–8
- Farina D, Fosci M and Merletti R 2002c Motor unit recruitment strategies investigated by surface EMG variables *J. Appl. Physiol.* **92** 235–47 (PMID: 11744666)
- Farina D, Gazzoni M and Camelia F 2004b Low-threshold motor unit membrane properties vary with contraction intensity during sustained activation with surface EMG visual feedback *J. Appl. Physiol.* **96** 1505–15
- Farina D and Holobar A 2016 Characterization of human motor units from surface EMG decomposition *Proc. IEEE* **104** 353–73
- Farina D and Merletti R 2000 Comparison of algorithms for estimation of EMG variables during voluntary isometric contractions *J. Electromyogr. Kinesiol.* **10** 337–49
- Farina D and Merletti R 2004 Estimation of average muscle fiber conduction velocity from 2D surface EMG recordings *J. Neurosci. Methods* **134** 199–208
- Farina D, Merletti R and Enoka R M 2004a The extraction of neural strategies from the surface EMG *J. Appl. Physiol.* **96** 1486–95
- Farina D, Merletti R and Enoka R M 2014 The extraction of neural strategies from the surface EMG: an update *J. Appl. Physiol.* **17** 1215–30
- Fuglevand A J *et al* 1993 Impairment of neuromuscular propagation during human fatiguing contractions at submaximal forces *J. Physiol.* **460** 549–72
- Gabriel D A *et al* 2007 Analysis of surface EMG spike shape across different levels of isometric force *J. Neurosci. Methods* **159** 146–52
- Gallina A *et al* 2013a Do surface electromyograms provide physiological estimates of conduction velocity from the medial gastrocnemius muscle? *J. Electromyogr. Kinesiol.* **23** 319–25
- Gallina A and Botter A 2013 Spatial localization of electromyographic amplitude distributions associated to the activation of dorsal forearm muscles *Frontiers Physiol.* **4** 367
- Gallina A, Merletti R and Gazzoni M 2013b Uneven spatial distribution of surface EMG: what does it mean? *Eur. J. Appl. Physiol.* **113** 887–94

- Gallina A, Merletti R and Vieira T M M 2011 Are the myoelectric manifestations of fatigue distributed regionally in the human medial gastrocnemius muscle? *J. Electromyogr. Kinesiol.* **21** 929–38
- Gallina A and Vieira T 2015 Territory and fiber orientation of vastus medialis motor units: A Surface electromyography investigation *Muscle Nerve* **1057–65**
- Gandevia S C 2001 Spinal and supraspinal factors in human muscle fatigue *Physiol. Rev.* **81** 1725–89
- Gazzoni M, Camelia F and Farina D 2005 Conduction velocity of quiescent muscle fibers decreases during sustained contraction *J. Neurophysiol.* **94** 387–94
- Gazzoni M, Farina D and Merletti R 2001 Motor unit recruitment during constant low force and long duration muscle contractions investigated with surface electromyography *Acta. Physiol. Pharmacol. Bulg.* **26** 67–71
- Gazzoni M, Farina D and Merletti R 2004 A new method for the extraction and classification of single motor unit action potentials from surface EMG signals *J Neurosci Methods* **136** 165–77
- González-Izal M *et al* 2012 Electromyographic models to assess muscle fatigue *J. Electromyogr. Kinesiol.* **22** 501–12
- Grönlund C *et al* 2005 Simultaneous estimation of muscle fibre conduction velocity and muscle fibre orientation using 2D multichannel surface electromyogram *Med. Biol. Eng. Comput.* **43** 63–70
- Hägg G M 1992 Interpretation of EMG spectral alterations and alteration indexes at sustained contraction *J. Appl. Physiol.* **73** 1211–7 (PMID: [1447061](#))
- Henneman E 1968 Organization of the spinal cord *Medical Physiology* ed V B Mountcastle (The C V Mosby Company) p 1858
- Herbert R D *et al* 2002 Change in length of relaxed muscle fascicles and tendons with knee and ankle movement in humans *J. Physiol.* **539** 637–45
- Hodson-Tole E F, Loram I D and Vieira T M M 2013 Myoelectric activity along human gastrocnemius medialis: Different spatial distributions of postural and electrically elicited surface potentials *J. Electromyogr. Kinesiol.* **23** 43–50
- Holobar A *et al* 2008 Decomposition of surface electromyograms, recorded during slow dynamic contractions of biceps brachii muscle *Gait Posture* **28** S36
- Holobar A *et al* 2009 Estimating motor unit discharge patterns from high-density surface electromyogram *Clin. Neurophysiol.* **120** 551–62
- Holobar A *et al* 2010 Experimental analysis of accuracy in the identification of motor unit spike trains from high-density surface EMG *IEEE Trans. Neural Syst. Rehabil. Eng.* **18** 221–9
- Holobar A and Farina D 2014 Blind source identification from the multichannel surface electromyogram *Physiol. Meas.* **35** R143–65
- Holobar A, Minetto M A and Farina D 2014 Accurate identification of motor unit discharge patterns from high-density surface EMG and validation with a novel signal-based performance metric *J. Neural Eng.* **11** 16008
- Holobar A and Zazula D 2003 Surface EMG decomposition using a novel approach for blind source separation *Inform. Med. Slov.* **8** 2–14
- Holobar A and Zazula D 2007 Multichannel blind source separation using convolution kernel compensation *IEEE Trans. Signal Process.* **55** 4487–96
- Holtermann A *et al* 2008 Spatial distribution of active muscle fibre characteristics in the upper trapezius muscle and its dependency on contraction level and duration *J. Electromyogr. Kinesiol.* **18** 372–81
- Holtermann A *et al* 2009 Selective activation of neuromuscular compartments within the human trapezius muscle *J. Electromyogr. Kinesiol.* **19** 896–902
- Holtermann A *et al* 2010 Duration of differential activations is functionally related to fatigue prevention during low-level contractions *J. Electromyogr. Kinesiol.* **20** 241–5
- Houtman C J *et al* 2003 Changes in muscle fiber conduction velocity indicate recruitment of distinct motor unit populations *J. Appl. Physiol.* **95** 1045–54
- Hunter I W, Kearney R E and Jones L A 1987 Estimation of the conduction velocity of muscle action potentials using phase and impulse response function techniques *Med. Biol. Eng. Comput.* **25** 121–6
- Ishikawa M *et al* 2006 Changes in the soleus muscle architecture after exhausting stretch-shortening cycle exercise in humans *Eur. J. Appl. Physiol.* **97** 298–306
- Joseph J and Nightingale A 1952 Electromyography of muscles of posture: leg muscles in males *J. Physiol.* **117** 484–91
- Kallenberg L A C and Hermens H J 2008 Behaviour of a surface EMG based measure for motor control: Motor unit action potential rate in relation to force and muscle fatigue *J. Electromyogr. Kinesiol.* **18** 780–8

- Keenan K G *et al* 2006 Amplitude cancellation reduces the size of motor unit potentials averaged from the surface EMG *J. Appl. Physiol.* **100** 1928–37
- Klaver-Król E G *et al* 2010 Distribution of motor unit potential velocities in the biceps brachii muscle of sprinters and endurance athletes during prolonged dynamic exercises at low force levels *J. Electromyogr. Kinesiol.* **20** 1115–24
- Klaver-Król E G *et al* 2012 Muscle fiber velocity and electromyographic signs of fatigue in fibromyalgia *Muscle Nerve* **46** 738–45
- Kleine B U *et al* 2000 Surface EMG mapping of the human trapezius muscle: The topography of monopolar and bipolar surface EMG amplitude and spectrum parameters at varied forces and in fatigue *Clin. Neurophysiol.* **111** 686–93
- Kleine B U, Stegeman D F, Mund D and Anders C 2001 Influence of motoneuron firing synchronization on SEMG characteristics in dependence of electrode position *J. Appl. Physiol.* **91** 1588–99 (PMID: 11568140)
- Kleine B U *et al* 2007 Using 2D spatial information in decomposition of surface EMG signals *J. Electromyogr. Kinesiol.* **17** 535–48
- Kouzaki M *et al* 2003 Local blood circulation among knee extensor synergists in relation to alternate muscle activity during low-level sustained contraction *J. Appl. Physiol.* **95** 49–56
- Kouzaki M and Shinohara M 2006 The frequency of alternate muscle activity is associated with the attenuation in muscle fatigue *J. Appl. Physiol.* **101** 715–20
- Krogh-Lund C and Jørgensen K 1993 Myo-electric fatigue manifestations revisited: power spectrum, conduction velocity, and amplitude of human elbow flexor muscles during isolated and repetitive endurance contractions at 30% maximal voluntary contraction *Eur. J. Appl. Physiol. Occup. Physiol.* **66** 161–73
- Kubo K *et al* 2001 Effects of repeated muscle contractions on the tendon structures in humans *Eur. J. Appl. Physiol.* **84** 162–66
- Lange F, Van Weerden T W and Van Der Hoeven J H 2002 A new surface electromyography analysis method to determine spread of muscle fiber conduction velocities *J. Appl. Physiol.* **93** 759–64
- Lapatki B G *et al* 2006 Topographical characteristics of motor units of the lower facial musculature revealed by means of high-density surface EMG *J. Neurophysiol.* **95** 342–54
- Lieber R L and Fridén J 2000 Functional and clinical significance *Muscle Nerve* **23** 1647–66
- Lindstrom L H and Magnusson R I 1977 Interpretation of myoelectric power spectra: a model and its applications *Proc. IEEE* **65** 653–62
- Liu Y, Ning Y, He J, Li S, Zhou P and Zhang Y 2014 Internal muscle activity imaging from multi-channel surface EMG recordings: a validation study *Conf. Proc. IEEE Eng. Med. Biol. Soc.* 3559–61 (<https://doi.org/10.1109/EMBC.2014.6944391>)
- Lo Conte L R and Merletti R 1995 Advances in processing of surface myoelectric signals: part 2 *Med. Biol. Eng. Comput.* **33** 373–84
- Lynn P A *et al* 1978 Influences of electrode geometry on bipolar recordings of the surface electromyogram *Med. Biol. Eng. Comput.* **16** 651–60
- Mademli L and Arampatzis A 2005 Behaviour of the human gastrocnemius muscle architecture during submaximal isometric fatigue *Eur. J. Appl. Physiol.* **94** 611–7
- Manning C D *et al* 2010 Recovery of human motoneurons during rotation *Exp. Brain Res.* **204** 139–44
- Martinez-Valdes E *et al* 2015 High-density surface electromyography provides reliable estimates of motor unit behavior *Clin. Neurophysiol.* **127** 2534–41
- Masuda T, Miyano H and Sadoyama T 1985 A surface electrode array for detecting action potential trains of single motor units *Electroencephalogr. Clin. Neurophysiol.* **60** 435–43
- McGill K C and Dorfman L J 1984 High-resolution alignment of sampled waveforms *IEEE Trans. Biomed. Eng.* **31** 462–8
- McGill K C and Lateva Z C 2011 History dependence of human muscle-fiber conduction velocity during voluntary isometric contractions *J. Appl. Physiol.* **111** 630–41
- McLean L and Goudy N 2004 Neuromuscular response to sustained low-level muscle activation: Within- and between-synergist substitution in the triceps surae muscles *Eur. J. Appl. Physiol.* **91** 204–16
- McManus L *et al* 2015 Changes in motor unit behavior following isometric fatigue of the first dorsal interosseous muscle *J. Neurophysiol.* **113** 3186–96
- Merletti R *et al* 1999 Modeling of surface myoelectric signals II Model-based signal interpretation *IEEE Trans. Biomed. Eng.* **46** 821–9
- Merletti R *et al* 2002 Effect of age on muscle functions investigated with surface electromyography *Muscle Nerve* **25** 65–76

- Merletti R *et al* 2009 Technology and instrumentation for detection and conditioning of the surface electromyographic signal: state of the art *Clin. Biomech.* **24** 122–34
- Merletti R *et al* 2010 Advances in surface EMG: recent progress in clinical research applications *Crit. Rev. Biomed. Eng.* **38** 347–79
- Merletti R and Farina D 2016 *Surface Electromyography: Physiology, Engineering and Applications* 1st edn (New York: Wiley)
- Merletti R and Lo Conte L R 1995 Advances in processing of surface myoelectric signals: Part 1 *Med. Biol. Eng. Comput.* **33** 362–72
- Merletti R, Farina D and Gazzoni M 2003 The linear electrode array: A useful tool with many applications *J. Electromyogr. Kinesiol.* **13** 37–47
- Merletti R, Knaflitz M and De Luca C J 1990 Myoelectric manifestations of fatigue in voluntary and electrically elicited contractions *J. Appl. Physiol.* **69** 1810–20 (PMID: 2272975)
- Mesin L *et al* 2009 A bi-dimensional index for the selective assessment of myoelectric manifestations of peripheral and central muscle fatigue *J. Electromyogr. Kinesiol.* **19** 851–63
- Mesin L 2015 Real time estimation of generation, extinction and flow of muscle fibre action potentials in high density surface EMG *Comput. Biol. Med.* **57** 8–19
- Mesin L, Merletti R and Vieira T M M 2011 Insights gained into the interpretation of surface electromyograms from the gastrocnemius muscles: A simulation study *J. Biomech.* **44** 1096–103
- Mitsukawa N *et al* 2009 Fatigue-related changes in fascicle-tendon geometry over repeated contractions: Difference between synergist muscles *Muscle Nerve* **40** 395–401
- Nashner L M 1977 Fixed patterns of rapid postural responses among leg muscles during stance *Exp. Brain Res.* **30** 13–24
- Nawab S H, Chang S S and De Luca C J 2010 High-yield decomposition of surface EMG signals *Clin. Neurophysiol.* **121** 1602–15
- Negro F, Muceli S, Castronovo A M, Holobar A and Farina D 2016 Multi-channel intramuscular and surface EMG decomposition by convolutive blind source separation *J. Neural Eng.* **13** 026027
- Ning Y *et al* 2015 Surface EMG decomposition based on K-means clustering and convolution kernel compensation *IEEE J. Biomed. Health Inform.* **19** 471–77
- Rainoldi A *et al* 1999 Repeatability of surface EMG variables during voluntary isometric contractions of the biceps brachii muscle *J. Electromyogr. Kinesiol.* **9** 105–19
- Rainoldi A *et al* 2000 Geometrical factors in surface EMG of the vastus medialis and lateralis muscles *J. Electromyogr. Kinesiol.* **10** 327–36
- Rainoldi A, Gazzoni M and Casale R 2008 Surface EMG signal alterations in Carpal Tunnel syndrome: a pilot study *Eur. J. Appl. Physiol.* **103** 233–42
- Rainoldi A, Melchiorri G and Caruso I 2004 A method for positioning electrodes during surface EMG recordings in lower limb muscles *J. Neurosci. Methods* **134** 37–43
- Ravier P *et al* 2005 An EMG fractal indicator having different sensitivities to changes in force and muscle fatigue during voluntary static muscle contractions *J. Electromyogr. Kinesiol.* **15** 210–21
- Reucher H, Rau G and Silny J 1987a Spatial filtering of noninvasive multielectrode EMG: part I—introduction to measuring technique and applications *IEEE Trans. Biomed. Eng.* **BME-34** 98–105
- Reucher H, Silny J and Rau G 1987b Spatial filtering of noninvasive multielectrode EMG: part II—filter performance in theory and Modeling *IEEE Trans. Biomed. Eng.* **BME-34** 106–13
- Rudroff T *et al* 2008 Electromyographic measures of muscle activation and changes in muscle architecture of human elbow flexors during fatiguing contractions *J. Appl. Physiol.* **104** 1720–6
- Sacco I C N *et al* 2009 A method for better positioning bipolar electrodes for lower limb EMG recordings during dynamic contractions *J. Neurosci. Methods* **180** 133–7
- Sadamoto T, Bonde-Petersen F and Suzuki Y 1983 Skeletal muscle tension, flow, pressure, and EMG during sustained isometric contractions in humans *Eur. J. Appl. Physiol. Occup. Physiol.* **51** 395–408
- Schneider J, Silny J and Rau G 1991 Influence of tissue inhomogeneities on noninvasive muscle fiber conduction velocity measurements—investigated by physical and numerical modeling *IEEE Trans. Biomed. Eng.* **38** 851–60
- Shi J *et al* 2007 Assessment of muscle fatigue using sonomyography: Muscle thickness change detected from ultrasound images *Med. Eng. Phys.* **29** 472–79
- Smith T O *et al* 2009 Do the vastus medialis obliquus and vastus medialis longus really exist? A systematic review *Clin. Anat.* **22** 183–99

- Soares F A *et al* 2015 Motor unit action potential conduction velocity estimated from surface electromyographic signals using image processing techniques *Biomed. Eng. Online* **14** 84
- Sollie G *et al* 1985 The measurement of the conduction velocity of muscle fibres with surface EMG according to the cross-correlation method *Electromyogr. Clin. Neurophysiol.* **25** 193–204
- Staudenmann D *et al* 2009 Heterogeneity of muscle activation in relation to force direction: A multi-channel surface electromyography study on the triceps surae muscle *J. Electromyogr. Kinesiol.* **19** 882–95
- Tamaki H, Kitada K, Akamine T, Murata F, Sakou T and Kurata H 1998 Alternate activity in the synergistic muscles during prolonged low-level contractions *J. Appl. Physiol.* **84** 1943–51 (PMID: 9609788)
- Vieira T *et al* 2015 Spatial variation of compound muscle action potentials across human gastrocnemius medialis *J. Neurophysiol.* **114** 1617–27
- Vieira T M M *et al* 2011 Postural activation of the human medial gastrocnemius muscle: are the muscle units spatially localised? *J. Physiol.* **589** 431–43
- Vieira T M M, Windhorst U and Merletti R 2010 Is the stabilization of quiet upright stance in humans driven by synchronized modulations of the activity of medial and lateral gastrocnemius muscles? *J. Appl. Physiol.* **108** 85–97
- Watanabe K, Kouzaki M and Moritani T 2013 Region-specific myoelectric manifestations of fatigue in human rectus femoris muscle *Muscle Nerve* **48** 226–34
- Weist R, Eils E and Rosenbaum D 2004 The influence of muscle fatigue on electromyogram and plantar pressure patterns as an explanation for the incidence of metatarsal stress fractures *Am. J. Sports Med.* **32** 1893–8
- Westgaard R H and de Luca C J 1999 Motor unit substitution in long-duration contractions of the human trapezius muscle *J. Neurophysiol.* **82** 501–4 (PMID: 10400978)
- Wheeler B C and Smith S R 1988 High-resolution alignment of action potential waveforms using cubic spline interpolation *J. Biomed. Eng.* **10** 47–53
- Wood S M *et al* 2001 Surface electromyography using electrode arrays: a study of motor neuron disease *Muscle Nerve* **24** 223–30
- Zijdewind I, Kernell D and Kukulka C G 1995 Spatial differences in fatigue-associated electromyographic behaviour of the human first dorsal interosseus muscle *J. Physiol.* **483** 499–509
- Zwarts M J and Stegeman D F 2003 Multichannel surface EMG: basic aspects and clinical utility *Muscle Nerve* **28** 1–17