



POLITECNICO DI TORINO
Repository ISTITUZIONALE

Composite biomaterials based on sol-gel mesoporous silicate glasses: a review

Original

Composite biomaterials based on sol-gel mesoporous silicate glasses: a review / Baino, Francesco; Fiorilli, SONIA LUCIA; VITALE BROVARONE, Chiara. - In: BIOENGINEERING. - ISSN 2306-5354. - ELETTRONICO. - (2017), pp. 1-18.

Availability:

This version is available at: 11583/2666001 since: 2017-03-01T12:42:48Z

Publisher:

MDPI

Published

DOI:10.3390/bioengineering4010015

Terms of use:

openAccess

This article is made available under terms and conditions as specified in the corresponding bibliographic description in the repository

Publisher copyright

(Article begins on next page)

Review

Composite Biomaterials Based on Sol-Gel Mesoporous Silicate Glasses: A Review

Francesco Baino *, Sonia Fiorilli and Chiara Vitale-Brovarone

Department of Applied Science and Technology, Politecnico di Torino, Corso Duca degli Abruzzi 24, Torino 10129, Italy; sonia.fiorilli@polito.it (S.F.); chiara.vitale@polito.it (C.V.-B.)

* Correspondence: francesco.baino@polito.it; Tel.: +39-011-090-4668

Academic Editor: Jacqueline J. Alblas

Received: 20 December 2016; Accepted: 17 February 2017; Published: 23 February 2017

Abstract: Bioactive glasses are able to bond to bone and stimulate the growth of new tissue while dissolving over time, which makes them ideal materials for regenerative medicine. The advent of mesoporous glasses, which are typically synthesized via sol-gel routes, allowed researchers to develop a broad and versatile class of novel biomaterials that combine superior bone regenerative potential (compared to traditional melt-derived glasses) with the ability of incorporating drugs and various biomolecules for targeted therapy in situ. Mesoporous glass particles can be directly embedded as a bioactive phase within a non-porous (e.g., microspheres), porous (3D scaffolds) or injectable matrix, or be processed to manufacture a surface coating on inorganic or organic (macro)porous substrates, thereby obtaining hierarchical structures with multiscale porosity. This review provides a picture of composite systems and coatings based on mesoporous glasses and highlights the challenges for the future, including the great potential of inorganic–organic hybrid sol-gel biomaterials.

Keywords: bioactive glass; mesoporous; composite; scaffold; tissue engineering

1. Introduction

Bioactive glasses are amorphous materials that can bond to hard and soft tissues and stimulate the regeneration of healthy bone while dissolving over time, which makes them highly attractive candidates for healthcare and a 21st century biomedicine [1]. The first bioactive glass, belonging to the $45\text{SiO}_2\text{--}24.5\text{Na}_2\text{O--}24.5\text{CaO--}6\text{P}_2\text{O}_5$ (wt %) system (45S5 Bioglass[®]), was developed by Larry L. Hench at the University of Florida (USA) [2] and has been clinically used in a number of orthopedic and dental applications since the 1980s [3].

In the context of bone repair, “inorganic bioactivity” denotes the formation of a nano-crystalline apatite layer mimicking the mineral phase of bone on the implant surface, which is a precondition so that a tight bond to calcified tissues can occur [4]. While SiO_2 should be less than 60 mol % in melt-derived glasses to allow the material to bond to bone as a consequence of the bioactive process [5], surface apatite formation was interestingly observed in glasses that contain up to 90 mol % of SiO_2 if they are synthesized via a sol-gel process that creates an inherent mesoporosity (2–50 nm) in the material [6]. Hence, sol-gel glass particles are characterized by a high surface area available for the release of soluble ionic species (tens of m^2/g compared to less than $1 \text{ m}^2/\text{g}$ of melt-derived glass products of equal size) and, thereby, bioactive reactions are significantly emphasized and accelerated [7].

Incorporation of supramolecular chemistry into the sol-gel process (Figure 1a) led to the advent of ordered silicate mesoporous materials [8], which have been proposed over the last 15 years as versatile platforms for the controlled release of drugs and growth factors that can be entrapped inside an ordered array of mesopores [9–11]. Classification of pore sizes according to International Union of Pure and Applied Chemistry (IUPAC) definitions [12] is schematically depicted in Figure 1b.

It is important to note that the so-called mesoporous bioactive glasses (MBGs) [13], which are typically synthesized by using a surfactant as mesopore template, are unique compared to “conventional” sol-gel bioactive glasses. In fact, although both types of glasses are produced by a wet method (sol-gel) and characterized by nanopores at the mesoscale (2–50 nm), the mechanism for the generation of the mesoporous texture is different: conventional sol-gel glasses possess mesopores which arise from the random distribution of CaO within the network of SiO₂ [14]; on the contrary, the self-assembly of micelles in MBGs gives rise to uniform mesopores as well as ordered mesostructures with higher specific surface area (hundreds of m²/g). Under N₂ adsorption–desorption analysis, conventional sol-gel glasses typically show H₂-type hysteresis loops associated with ink-bottle-like pores, while MBGs exhibit H₁-type hysteresis loops typical of 1D spatially-ordered channels [13].

SiO₂-based mesoporous materials, which are usually produced in the form of micro- or nano-sized particles, can be added to a polymeric or inorganic matrix by direct mixing or surface coating strategies in order to produce composites with suitable characteristics for medical applications, such as hierarchical 3D porous scaffolds or injectable cements. This review provides a state-of-the-art picture about the above-mentioned composites as well as a prospect for future research, highlighting the potential of hybrid systems in which the organic and inorganic phases are intimately linked at the nanoscale. In fact, hybrids allow many limitations of “traditional” nanocomposites to be overcome, keeping the best of the two components to produce a high-performance single-phase material with superior properties.

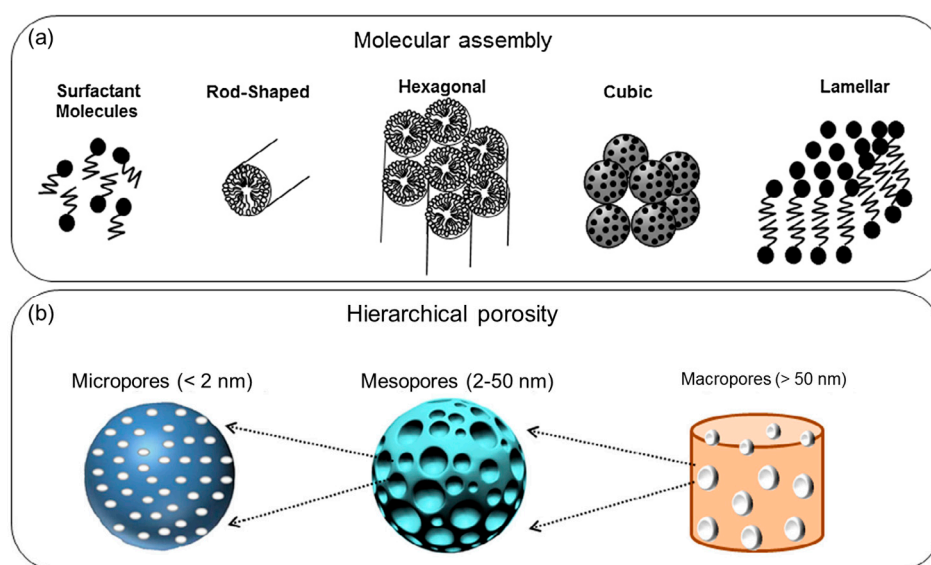


Figure 1. Basic concepts related to mesoporous materials: (a) molecular self-assembly of surfactant micelles to originate mesopores and (b) pore size scales according to IUPAC terminology. Images adapted from Owens et al. [15] © Elsevier.

2. Hierarchical Glass-Based Composites Produced by “Mixing Strategies”

Incorporation of an inorganic phase into a polymeric matrix is a valuable strategy to improve the performance of the base material and impart extra-functionalities, primarily high strength and bioactivity. An overview of these applications is reported in Table 1.

Collagen hydrogels, having similar composition to the bone extracellular matrix, are excellent platforms for the anchorage and spreading of cells, as well as for their subsequent proliferation and differentiation into target tissue lineages. However, one of the major drawbacks of collagen is its high rate of hydrolytic and enzymatic biodegradability, which limits the use of collagen hydrogels as biological constructs [16]. El-Fiqi et al. [17] showed that the addition of MBG nanoparticles (50–100 nm) as a second phase can be a valuable strategy to improve the performance of collagen hydrogels

in terms of physico-chemical and mechanical properties (Figure 2) as well as biological behavior upon in vitro tests with mesenchymal stem cells.

Mesoporous silicate glass particles have been added as a bioactive phase to otherwise nearly-inert polymeric matrices in a number of studies. El-Kady et al. [18] incorporated sol-gel glass (60SiO₂-36CaO-4P₂O₅ wt %) nanoparticles (size below 100 nm) into poly(L-lactic acid) (PLLA) scaffolds, produced by the solid-liquid phase separation method combined with solvent extraction, and observed the formation of a surface apatite layer upon in vitro tests; furthermore, the degradation rate of these composite scaffolds could be tailored according to the amount of silicate phase. Li et al. [19] prepared MBG/poly(lactic-co-glycolic acid) (PLGA) microspheres for obtaining a more sustained release of gentamicin over time. The same research group also experimented a solvent casting/particulate leaching route to fabricate MBG/poly(caprolactone) (PCL) composite scaffolds with improved drug release ability and high bioactivity in vitro [20]. For analogous purposes, MBG/alginate microspheres [21] and MBG/PLGA films [22] were prepared in other studies.

Table 1. Hierarchical composites containing a mesoporous glass phase.

Mesoporous Phase	Matrix	Processing	Effect	References
MBG	Collagen	Mixing	Improved bioactivity in vitro and mechanical properties	[17]
Sol-gel glass	PLLA	Solid-liquid phase separation + solvent extraction	Improved bioactivity in vitro	[18]
MBG	PLGA	Mixing	Improved bioactivity in vitro, drug release	[19,22]
MBG	Polyamide	Solvent casting/particulate leaching	Improved bioactivity in vitro and bone regeneration in vivo	[23]
		Solvent casting/particulate leaching	Improved bioactivity in vitro, drug release	[20]
MBG	PCL	Robocasting + salt leaching	Improved bioactivity in vitro and mechanical properties, pliability	[24]
		Mixing	Improved bioactivity in vitro, drug release	[21]
MBG	Alginate	3D plotting	Improved bioactivity in vitro, drug release	[25]
MBG	Silk fibroin	Freeze-drying	Improved bioactivity in vitro and mechanical properties	[26,27]
MBG	Calcium phosphate	Mixing + freeze-drying	Adequate mechanical properties and bone regeneration in vivo	[28]
MBG	Chitosan	Freeze-drying	Hemostasis to promote wound healing	[29]

MBG: mesoporous bioactive glasses; PLLA: poly(L-lactic acid); PLGA: poly(lactic-co-glycolic acid); PCL: poly(caprolactone).

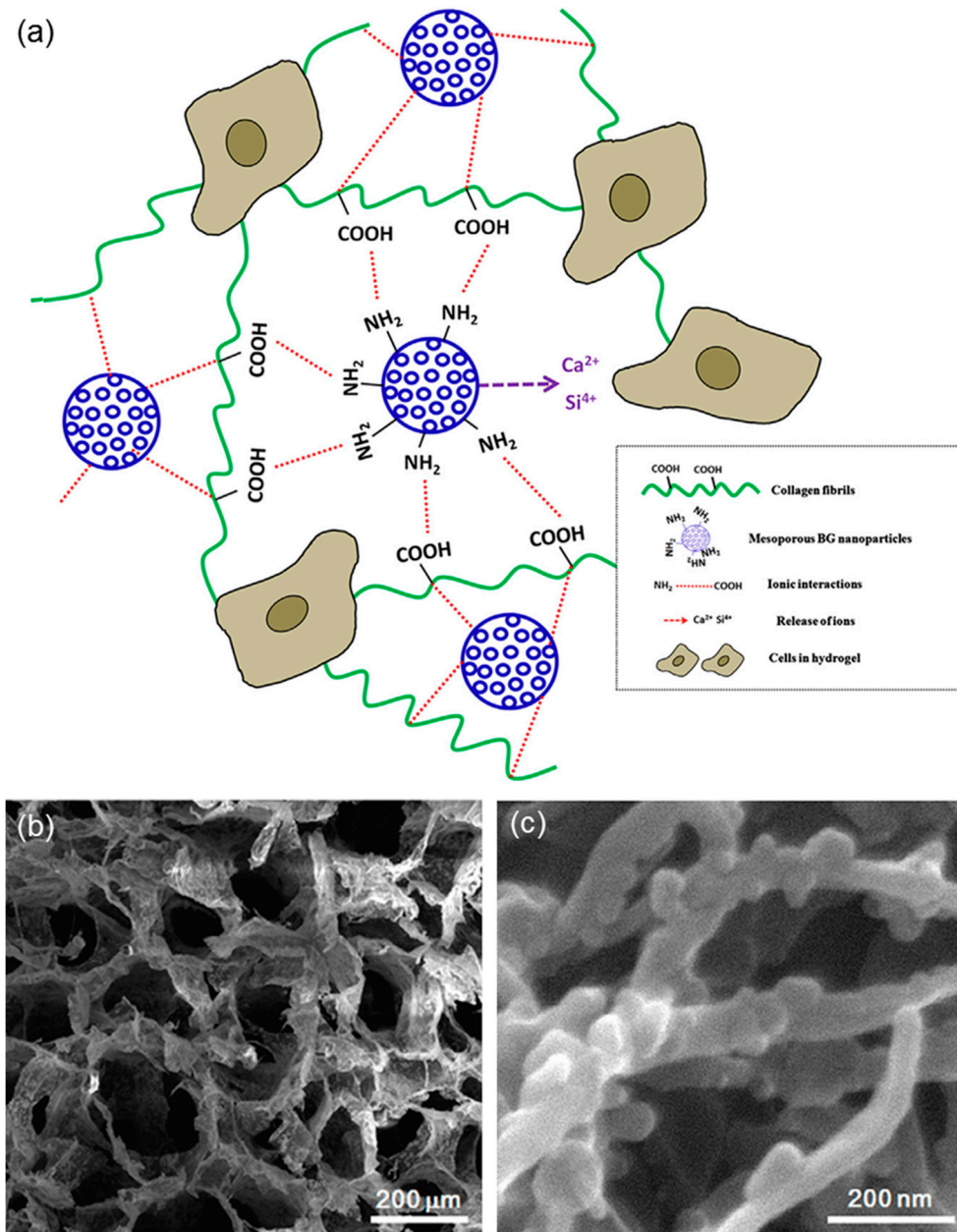


Figure 2. MBG/collagen nanocomposite obtained by freeze-frying: (a) schematic illustration of the material structure and function (ion release from MBG nanoparticles is expected to promote bioactivity and cellular mineralization, and the surface functionalization of MBG with amino groups facilitates chemical links with amino-acid sequences of collagen molecules, which enables the physico-chemical stability of the hydrogels); (b) scanning electron microscopy (SEM) micrograph of the hydrogel structure; and (c) detail showing the collagen fibrils integrated with MBG nanoparticles. Images adapted from El-Fiqi et al. [17] © Elsevier.

Su et al. used a solvent casting/particulate leaching strategy to produce MBG/polyamide scaffolds that exhibited excellent biocompatibility as well as superior bone regeneration potential *in vivo* (rabbit’s thighbone defects) compared to the polymeric material alone used as a reference [23].

Yun et al. [24] combined salt leaching with robocasting to obtain MBG/PCL composite scaffolds exhibiting three-level multiscale porosity, i.e., giant macropores around 200 μm, mid-size macropores within 2 to 9 μm, and mesopores of 5 nm. The scaffolds were fabricated by directly extruding the gel paste onto a chilled substrate using a robotic deposition device. A gantry robocasting apparatus was used with three axes of motion control (x, y and z-axis) and a syringe was affixed as a reservoir on the z-axis motion stage. The gel paste housed in the syringe was deposited

through a cylindrical nozzle (500 μm); a linear actuator served to depress the plunger of the syringe at a fixed speed so that the volumetric flow rate could be precisely controlled. The shapes and sizes of the scaffold as well as the arrangement of the macropores could be controlled by a computer system (Figure 3). These highly interesting constructs possessed adequate compressive strength (2–4 MPa) for bone repair, good *in vitro* bioactivity and a versatile sponge-like plastic nature with easy pliability, which suggested possible use as injectable scaffolds for minimally invasive surgery (Figure 3).

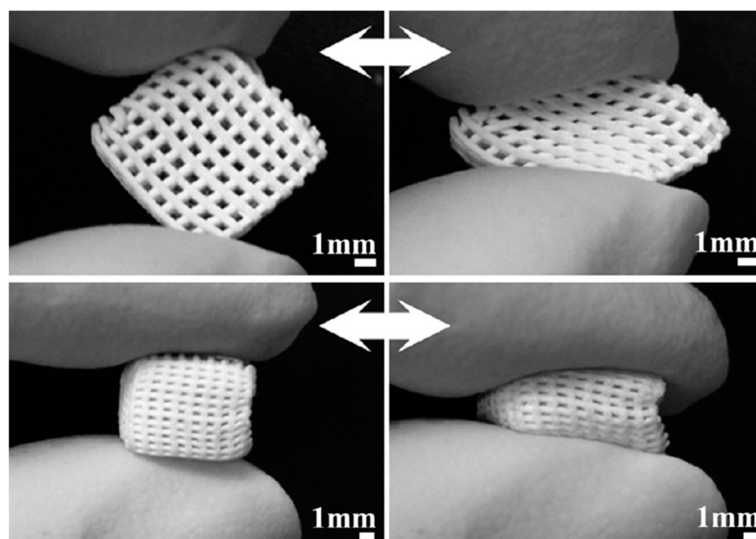


Figure 3. Compressibility of MBG/PCL composite scaffolds produced by robocasting (images adapted from Yun et al. [24] © Elsevier).

MBG/alginate pastes were also processed by 3D plotting [25] to fabricate hierarchical scaffolds provided with good biocompatibility, drug release properties and mineralization ability *in vitro* upon soaking in an inorganic simulated body fluid (SBF) that mimicked the composition of human plasma [4]. However, the mechanical properties were not completely satisfactory (1–1.5 MPa for as-such scaffolds and 0.5–0.8 MPa after immersion for 28 days in SBF) [25].

Silk fibroin and spray-dried MBG particles were also used to fabricate porous composites by freeze-drying: compared to the pure silk constructs, the hierarchical macro-mesoporous scaffolds exhibited an improved mechanical strength (up to 1 MPa) and a fast apatite-forming ability *in vitro* (hydroxyapatite agglomerates visible after 1 day in SBF) [26]. Similar results were obtained incorporating MBG particles obtained by a “conventional” wet synthesis into macroporous silk scaffolds [27].

Extending the application from organic/inorganic composites to biphasic ceramics, Li et al. [28] used a centrifugal embedding approach to fabricate a composite scaffold by combining MBG particles and calcium phosphate cement; bone morphogenetic proteins-2 (BMP-2) were also incorporated into this construct through a freeze-drying process. The obtained scaffolds exhibited a hierarchical pore structure (giant open pores of about 200 μm , macropores within 2 to 10 μm and mesopores of 5 nm), a nearly-adequate strength for bone repair (up to 1.4 MPa in compression), and supported the sustained release of BMP-2 over 7 days with excellent osteogenesis in a rabbit model.

As for the applications in soft tissue engineering, freeze-dried MBG/chitosan porous composite films were recently proposed as hemostatic membranes for wound healing [29]. Ultrathin MBG fibers (diameter of a few hundreds of nanometers) were prepared by Hong et al. [30] via electrospinning for possible use in skin tissue engineering; the same research group also demonstrated that the fibers could be prepared with a hollow core by a careful optimization of the processing parameters [31]. To the best of our knowledge, no other studies dealing with the fabrication of fibrous MBGs have been reported in the literature, perhaps due to the high cost associated to the electrospinning equipment needed for the mesoporous fiber production. Incorporation of such a bioactive phase in a polymeric matrix to obtain a MBG fiber-containing composite would deserve investigation in a future work.

3. Macroporous Scaffolds Provided with a Mesoporous Glass Coating

Deposition of a sol-gel glass coating on the struts of both inorganic and organic scaffolds was a key to impart extra-functionalities to the base 3D (macro)porous material—primarily bioactivity and drug delivery capability. An overview of these applications is reported in Table 2.

Perhaps the first relevant study was reported by Miao [32] who dip-coated highly-porous (80 vol %) Al_2O_3 foams with a thin layer of “conventional” 58S sol-gel glass (60SiO₂-36CaO-4P₂O₅ mol %) in order to impart apatite-forming ability to the otherwise nearly-inert ceramic skeleton. The same deposition strategy was carried out by Liu et al. [33] who applied a layer of 58S glass on the struts of 80Al₂O₃-20ZrO₂ (vol %) ceramic scaffolds. The obtained hierarchical porous composite exhibited adequate porosity (60–66 vol % with large and interconnected macropores of 1–2 mm) and compressive strength (5–8 MPa) for bone substitution, along with good bioactive properties in vitro as revealed by the formation of a surface apatite layer after 1 day in SBF.

The presence of a sol-gel glass coating may also contribute to mechanically reinforce the structure of the base scaffold, as demonstrated by a few studies. A significant improvement of the mechanical properties of calcium phosphate scaffolds was achieved by applying a 58S/PCL composite coating (dipping procedure); specifically, it was observed that the compressive strength (0.2–1.5 vs. 0.1 MPa) and elastic modulus (20–50 MPa vs. 15 MPa) were strongly dependent on the amount of 58S glass (1–90 wt %) introduced into the coating [34]. In another study, Esfahani et al. [35] coated highly-porous (83 vol %) scaffolds of bovine-derived hydroxyapatite with a thin layer of 58S glass by a prolonged dipping procedure to increase the compressive strength of the material from 0.22 to 1.49 MPa.

Besides the “conventional” sol-gel glasses, mesoporous materials (both pure amorphous SiO₂ and MBGs), too, were deposited as smart coatings on the struts of a variety of 3D scaffolds with the specific purpose of obtaining multifunctional systems that could combine bioactivity, mechanical support to the host and regenerated bone tissue, and drug release properties. The first prototype of such a construct comprised a bioactive glass-ceramic macroporous foam coated with a micrometric layer of SBA-15 spheres (mesopores within 5 to 8 nm) [36]. This early study was then extended to MCM-41 (Figure 4a,b) that, having a narrow size of mesopores (2–3 nm), should have allowed a finer control of the release kinetics of ibuprofen (drug molecule size about 1 nm) [37–39]. In both cases, the pure SiO₂ mesoporous glass coating played a key role, on the one hand in enhancing the drug adsorption ability of the porous construct and, on the other hand, in allowing a long-term release of the therapeutic molecules. A similar approach was also proposed by Boccardi et al. [40] who synthesized submicronic MCM-41 spheres directly on 45S5 Bioglass®-derived glass-ceramic scaffolds through a modified Stöber method.

From the viewpoint of regenerative medicine, the major limitation of pure SiO₂ mesoporous materials is their moderate reactivity in contact with biological fluids: in fact, although MCM-41 and SBA-15 were shown able to form a surface apatite layer upon prolonged immersion in SBF [41,42], the reaction kinetics are too slow to consider them as effective materials for bone repair. With these concerns in mind, researchers introduced other oxides (primarily CaO and P₂O₅) into the silica network to obtain MBGs with exceptional apatite forming ability [43]. These materials have been often proposed in the form of fine particulate or somehow processed (e.g., sponge replication, 3D printing) to obtain 3D macro-mesoporous scaffolds [44], and more rarely have been applied as coatings on preexisting porous substrates. Recently, MBG particles were deposited on CaSiO₃-containing macroporous foams by the electrophoretic mechanism in order to combine the excellent bioactivity of the mesoporous phase (Figure 4c,d) with the high mechanical strength (above 15 MPa under compressive loads) of the glass-ceramic skeleton [45]. A similar approach was also employed to deposited spray-dried Sr-containing MBG spheres on glass-ceramic scaffolds to improve bone regeneration as strontium is known to exhibit osteogenic and bone antiresorptive properties [46].

With the same purpose in mind, Zhang et al. [47] used a spin coating method to deposit a thin layer (about 100 nm) of nano-sized MBG on the struts of a 3D-printed β -tricalcium phosphate (TCP) scaffold to improve its bone regenerative potential, which was actually confirmed by in vivo tests in rabbits.

Shi et al. [48] fabricated MBG/PLGA-coated CaSiO₃ scaffolds by dipping the macroporous template in a polymer solution with different amounts of suspended nano-sized MBG particles. Compared to PLGA/CaSiO₃ scaffolds, the compressive strength significantly increased due to the presence of MBG particles embedded in the surface coating (1.5–2 vs. 0.4 MPa). Furthermore, the bioactive surface layer enhanced the in vitro mineralization ability, the proliferation and early cell differentiation of osteoblasts, and allowed a controlled release of ibuprofen to be achieved.

In a very interesting study, Ye et al. [49] coated hydroxyapatite porous orbital implants with a Cu-doped MBG coating to combine the bactericidal effects of Cu²⁺ ions released as the coating degrades and ofloxacin, an antibiotic which was encapsulated in the mesopores of the glass (Figure 4e,f). This composite device exhibited antibacterial activity against both gram-positive (*Staphylococcus aureus*) and gram-negative bacteria (*Escherichia coli*), thereby opening new perspectives for the prevention and treatment of implant-related ocular infections.

In the field of bioresorbable scaffolds based on phosphate glasses, Novajra et al. [50] recently developed fibrous scaffolds obtained by thermally bonding non-porous phosphate glass fibers enriched with MBG particles. The developed scaffolds showed a compressive strength of 3.5 MPa, a very high bioactivity and drug release ability due to the presence of mesoporous particles on the fiber surface.

While abundant literature can be found about the development of glass/polymer porous composites, especially when comprising the well-known (non-porous) 45S5 Bioglass® [51,52], there is a paucity of studies dealing with polymeric scaffolds coated by mesoporous glass. Zhu et al. [53] applied a layer of MBG particles on the surface of macroporous poly(L-lactic acid) (PLLA) scaffolds by dip-coating in order to impart bioactive properties and drug uptake/release capability to the polymeric skeleton. For the same purpose, MBG particles were also deposited on the struts of poly(3-hydroxybutyrate-co-3-hydroxyhexanoate) scaffolds obtained by 3D printing [54].

An interesting application, which can be actually considered an optimization of the sponge replica method to produce cellular glasses, was recently reported by Cabanas-Polo et al. [55] who exploited the electrophoretic mechanism in the processing of 60.8SiO₂-30.9CaO-5.8Na₂O-2.4P₂O₅ (mol %) sol-gel glass foams. In this electrophoresis-guided approach, the sol precursor molecules (positively charged) travelled from the surroundings of the counter-electrode to a Ni wire fixed to a polyurethane foam (cathode), thereby allowing a homogeneous impregnation of the porous substrate to be obtained. At the end of the process, the sol-coated polymeric template was left to dry and thermally-treated to obtain a sintered glass replica of the foam.

Occasionally, sol-gel glass has also been used to produce coatings on the surface of metallic porous substrates. From a general viewpoint, fabrication of bioactive glass monolithic coatings on metal implants is challenging due to a series of problems associated with high-temperature sintering required for the consolidation of the bioactive layer, including the risk of oxidation of the metal surface and the mismatch between the thermal expansion coefficients of metal and glass. A solution to these issues comes from the development of polymer/glass coatings that can adhere to the metallic substrate at low temperatures. An interesting study was reported by Yazdimamaghani et al. [56] who applied a PCL/gelatin coating reinforced with 64SiO₂-31CaO-5P₂O₅ (mol %) sol-gel glass particles on the surface of magnesium scaffolds by means of a freeze-drying process. The presence of the bioactive coating induced the growth of a surface apatite layer on the scaffold struts and, perhaps most importantly, played a protective role on the metal lying underneath. In fact, it was observed that pure magnesium scaffolds were fully degraded after 3 days in SBF, whereas about 87 wt % of PCL/gelatin/glass-coated samples remained after immersion for 14 days in the testing solution.

Table 2. Scaffolds provided with a mesoporous coating.

Coating	Base scaffold	Processing	Effect	References
58S	Al ₂ O ₃	Dip-coating	Improved bioactivity in vitro	[32]
58S	Al ₂ O ₃ /ZrO ₂	Dip-coating	Improved bioactivity in vitro	[33]
58S/PCL	Calcium phosphate	Dipping	Improved mechanical properties	[34]
58S	Bovine hydroxyapatite	Dipping	Improved mechanical properties	[35]
SBA-15	Glass–ceramic	Dipping	Drug release	[36]
MCM-41	Glass–ceramic	Dipping	Drug release	[37–39]
MBG	Glass–ceramic	Electrophoretic deposition	Improved bioactivity in vitro	[45,46]
MBG	β-TCP	Spin coating	Improved bioactivity in vitro	[47]
MBG/PLGA	CaSiO ₃	Dipping	Improved bioactivity in vitro and mechanical properties, drug release	[48]
Cu-doped MBG	Hydroxyapatite	Dipping	Drug release and antibacterial effect due to the release of Cu ²⁺ ions	[49]
MBG	Phosphate glass fibers	Thermal bonding	Improved bioactivity in vitro, drug release	[50]
MBG	PLLA	Dip-coating	Improved bioactivity in vitro, drug release	[53]
PCL/gelatin/sol-gel glass	Magnesium	Freeze-drying	Improved bioactivity in vitro, reduction of magnesium dissolution	[56]

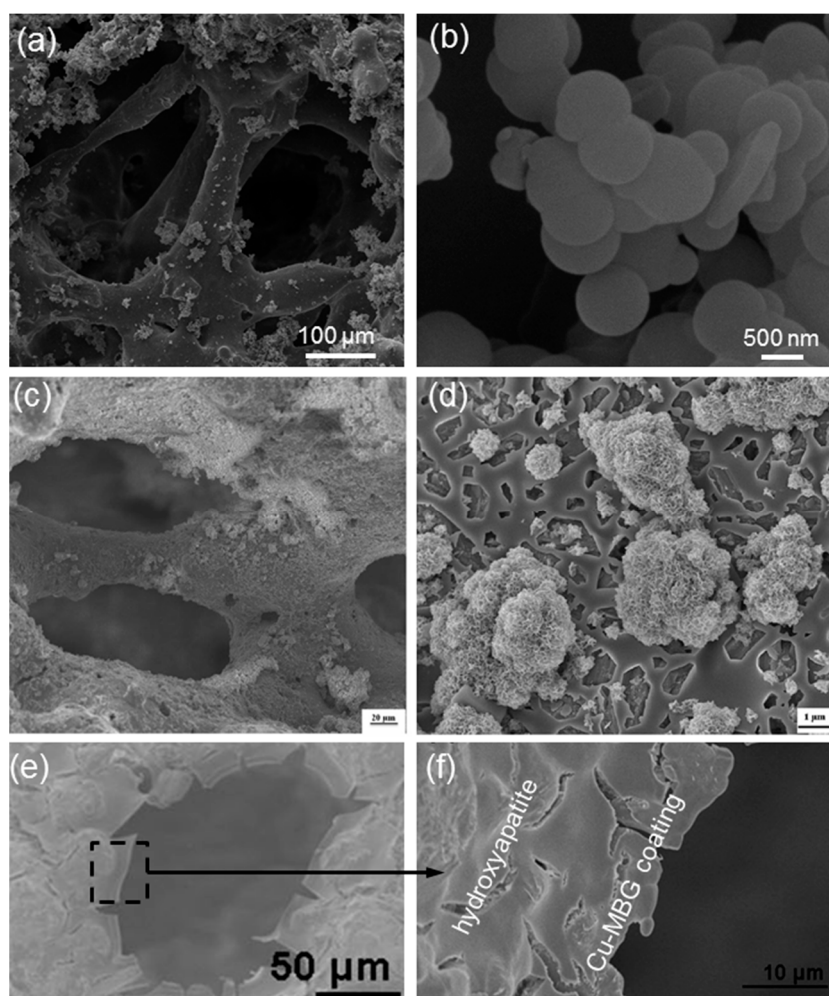


Figure 4. Ceramic scaffolds provided with a mesoporous coating (SEM micrographs are reported): (a) MCM-41 spheres deposited on a bioactive glass–ceramic foam; and (b) detail of the pure silica mesoporous particles anchored on the scaffold struts (images adapted from Vitale-Brovarone et al. [38] © Springer); (c) CaSiO₃-based scaffold coated with a MBG coating deposited by electrophoretic deposition to improve bioactivity, as demonstrated by the surface apatite agglomerates formed after 2 days in SBF (simulated body fluid) (d) (images adapted from Fiorilli et al. [45] © Springer); (e,f) Cu-doped MBG layer applied on a hydroxyapatite orbital implant to impart antibacterial properties (images adapted from Ye et al. [49] © Springer)..

4. Sol-Gel Glass Coatings on Prosthetic Devices

Bioactive glass coatings have been usually produced by enameling on the surface of metallic and ceramic prostheses [57]; however, this approach is not very adequate if sol-gel glasses have to be processed as the high-temperature firing step required for the sintering and consolidation of the coating could involve the elimination of the nanoporosity. Perhaps this was the reason why—along with some general concerns about the long-term adhesion of bioactive glass coatings to metallic prostheses [58]—the research involving sol-gel glasses was primarily addressed to other applications (e.g., 3D scaffolds), except for a few studies. Schrooten and Helsen [59] combined an experimental approach with SEM analysis to evaluate the adhesion strength of plasma-sprayed bioactive 52SiO₂-30.5CaO-9.8Na₂O-6.2P₂O₅-1.5CaF₂ (mol %) sol-gel glass coatings on titanium dental implants. The coating was able to withstand a maximum tensile stress of 47 MPa; adhesion tests performed after 2 months in SBF revealed that the adhesion strength of the coating decreased by about 10% but the interface between the glass and titanium implant remained fully intact at all times. However, no evidence of the persistence of the mesoporous structure in the glass after firing was reported.

Esfahani et al. [60] dip-coated nickel-titanium (Nitinol®) nails with a composite layer made of nano-sized 58S glass and titanium oxide (TiO₂) produced via a sol-gel route. The 58S particles (50–60 nm) dispersed in the TiO₂ matrix enhanced the hardness of the coating and a direct pull-out test recorded a coating–substrate bonding strength larger than 16 MPa. Furthermore, *in vitro* bioactivity studies showed the formation and growth of hydroxyapatite agglomerates on the surface of the 58S/TiO₂-coated Nitinol® alloy upon soaking in SBF, while the as-such implant had a bioinert behavior.

5. Injectable Cements Containing Mesoporous Silicate Materials

Implant fixation to the patient's host bone is vital to ensure the long-term success of an orthopedic joint prosthesis. At present, the most popular strategy involves the use of acrylic bone cement that acts as a grouting material at the bone–implant interface [61]. A variety of materials, such as carbon nanotubes [62] and TiO₂ fibers [63], have been incorporated within the powder or monomer component prior to mixing in the attempt to enhance the static and dynamic mechanical properties of the final bone cement. Despite promising *in vitro* results [64], however, issues concerning the interfacial adhesion between acrylic matrix and reinforcing phase, high stiffness and poor handling characteristics have generally prevented these composite cements from transitioning from the bench to clinical applications [65].

In the last few years, mesoporous materials have also been proposed as a second phase to add to bone cement for overcoming the above-mentioned challenges. Slane et al. [66] incorporated different amounts of mesoporous silica nanoparticles (MSNs) (0.5, 2 and 5 wt %) to a commercially-available acrylic cement and evaluated the impact on the static mechanical properties, fatigue life and hydration properties. It was reported that the flexural and compressive moduli, the compressive strength and the hydration degree increased with increasing concentration of MSNs, whereas the flexural strength and fracture toughness significantly decreased. The obtained results suggested that the interfacial adhesion strength between MSNs and acrylic matrix was poor, thereby leading to a decrease in the flexural and fatigue properties; problems of mixing between the two phases were also reported. The dispersion of the particles within the polymer was improved by the surface functionalization of the MSNs with amino groups (Figure 5a) [67].

In another study, Li et al. [68] prepared composite cement pellets by mixing calcium sulfate α -hemihydrate and MSNs, which were surface-functionalized with aminopropyltriethoxysilane (APS) to significantly improve the uptake and release of vancomycin (Figure 5b). These composite pellets showed no pyrogenic effect, met the clinical requirements on hemolytic reaction and were highly biocompatible as demonstrated by early in vitro biological tests.

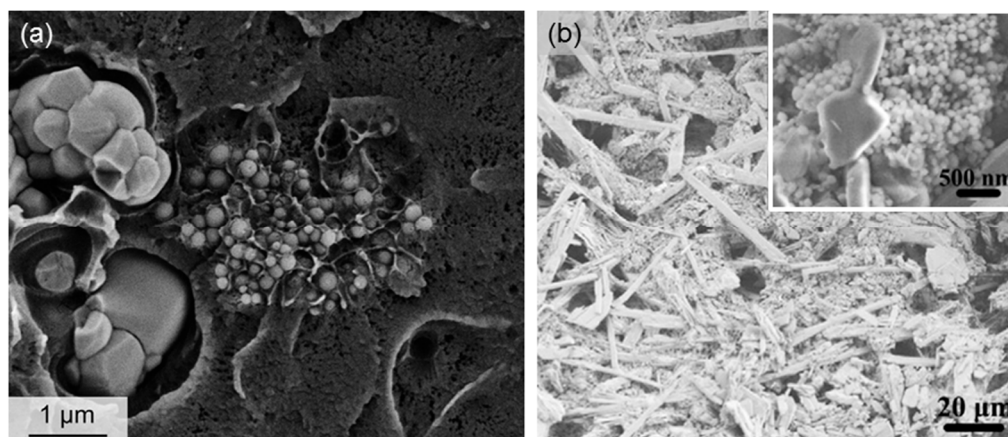


Figure 5. SEM micrographs of mesoporous silica nano-spheres incorporated in bone cements with a matrix of (a) poly(methyl methacrylate) (image adapted from Slane et al. [67] © Elsevier) or (b) calcium sulfate needles (image adapted from Li et al. [68] © Elsevier).

A very interesting application of mesoporous materials in the development of innovative bone cements was recently proposed by Tallia et al. [69], who synthesized radiopaque and bioactive particles of ZrO_2 -containing MBG that can be added to injectable materials for minimally invasive surgery procedures (e.g., acrylic cement or calcium sulfate), in order to allow the visualization of the implant under fluoroscopic control during both injection and follow-up. This research activity, based on a patent deposited by Vitale-Brovarone et al. [70], has led to the development of an injectable bioresorbable and bioactive cement (Spine-Ghost). Specifically, Spine-Ghost is a composite cement formed by a resorbable calcium sulfate matrix enriched by spray-dried MBG particles and a radiopaque glass–ceramic phase. Spine-Ghost showed excellent mechanical strength, a very high bioactivity, adequate setting times for use in vertebral surgery and radiopacity comparable to the commercial reference Cerament® [71]. It was successfully tested on an ad hoc developed sheep vertebral model showing suitable cement resorption and excellent bone formation [72].

6. Other Types of Composites and Coatings

Given the high brittleness of sol-gel scaffolds due to their inherent nanoporosity, deposition of a silk coating on the struts of MBG foams was rightly thought to improve the mechanical strength of the material, although this occurred to a still insufficient extent for safe handling and implantation (from 60 to 250 kPa, which is one order of magnitude below the strength of cancellous bone) [73]. Another application of polymer-coated MBG foams was reported by Ma et al. [74] who deposited a PLGA-magnetic SBA-15 coating on the struts of a cattail-templated MBG scaffold for the dual release of ibuprofen and metformin.

Sol-gel glasses have also found application in soft tissue repair in the form of bioactive coatings applied on polymeric sutures for wound dressing. Blaker et al. [75] coated Vycril® and Mersilk® resorbable sutures with Ag-doped sol-gel glass powder (60SiO₂–34CaO–4P₂O₅–2Ag₂O mol %) by a dipping procedure and reported the good in vitro bioactive behavior and bactericidal effect of the composite (Figure 6). In another study on the same materials, Pratten et al. [76] compared the antimicrobial activity elicited by Mersilk® sutures coated with the same Ag-doped glass with that of 45S5 Bioglass®-coated sutures against *Staphylococcus epidermidis*, and reported that Ag-doped samples exhibited a significantly greater effect in limiting bacterial attachment.

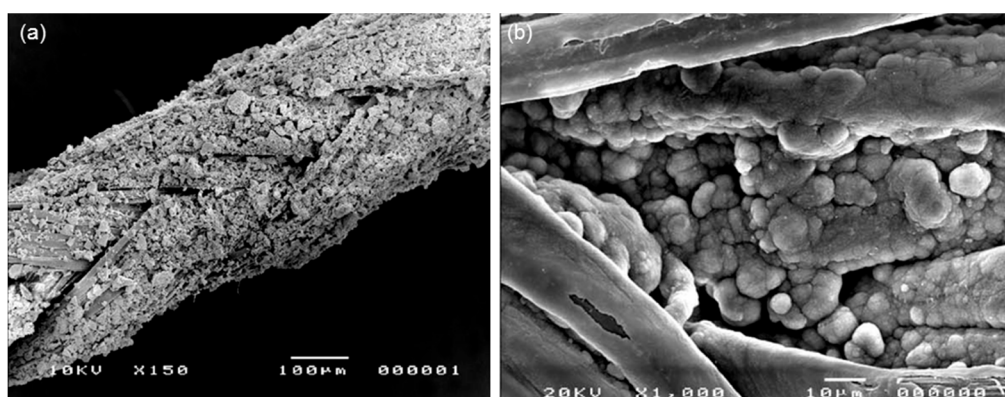


Figure 6. SEM micrographs of a Mersilk® suture coated with Ag-doped sol-gel bioactive glass powders (a) before and (b) after soaking for 7 days in SBF (hydroxyapatite agglomerates are clearly visible on the suture surface). Images adapted from Blaker et al. [75] © Elsevier.

7. Beyond Multiphasic Composite Materials: Hybrid Systems

Over the last decade, there has been much interest to go beyond the classical concept of composite and nanocomposite materials, the components of which are distinguishable by a clear interface and each of which maintain their peculiar physico-chemical characteristics. The challenge has been the development of inorganic–organic hybrid materials in which the components interact at the molecular level and are indistinguishable above the nanoscale [77]. This intimate interaction should allow cells to come into contact with both phases at one time, and the material should degrade at a single rate without having mismatched resorption kinetics of inorganic and organic phases [78].

Hybrids are typically synthesized by introducing a polymer in the sol-gel process after hydrolysis of the silica precursor alkoxide (e.g., tetraethyl orthosilicate (TEOS)), so that the inorganic silica network can form around the polymer molecules and nanoscale interactions between the two components can be created. Compared to sol-gel glasses, ageing and drying must be performed to a significantly lower temperature (below 100 °C) to avoid degradation of the system. In general, bioactive sol-gel hybrids are expected to have bioactivity similar to that of bioactive glasses but superior toughness and controlled congruent degradation [79]. This new class of biomaterials has been recently reviewed in detail by Jones [80] and Owens et al. [15].

Hybrid sol-gel materials can be classified into two classes depending on the interactions between the inorganic and organic chains [76]. Class I comprises hybrids that do not contain covalent or ionic-covalent bonds between the organic and inorganic phases, but each component interacts by only weak interactions, such as H-bond, Van der Waals bond, π - π interaction or electrostatic forces. Typically, the polymer is “mechanically” entrapped in the silica network during condensation, and the inorganic and organic chains are held together by H-bonding to the Si–OH surface groups. Biocompatible and degradable polymers of natural and synthetic origin have been used for biomedical applications, such as poly(vinyl alcohol) (PVA) [81,82], PCL [83,84], gelatin [85] and chitosan [86–88].

On the contrary, class-II hybrids include materials in which a part of the organic and inorganic components is linked to each other by strong chemical bonds such as covalent or ionic-covalent bonds (Figure 7). For this purpose, we can use either a polymer that already contains silane bonds (e.g., poly(dimethoxysilane) [89]) or the polymer can be functionalized with a coupling agent before being introduced in the sol-gel process (e.g., poly(ethylene glycol) (PEG)-SiO₂ class-II hybrids synthesized by using triethoxysilyl-terminated PEG and TEOS [90]).

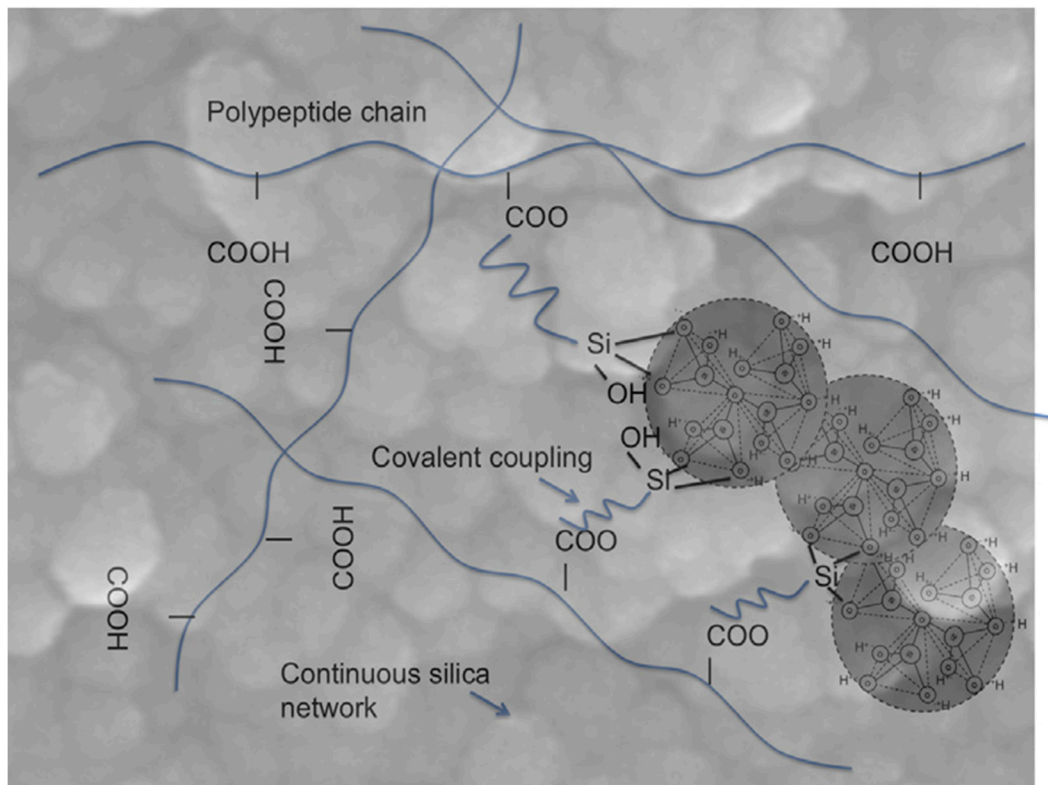


Figure 7. Schematic illustration of the interpenetrating inorganic and organic networks of a typical class-II hybrid material. Three nanoparticles of the continuous silica network are highlighted. The polymer chains are bonded to the silica network by a coupling agent (3-glycidyloxypropyl)trimethoxysilane (GPTMS)). Carboxylic acid groups on the polymer act as nucleophiles to open the epoxy ring of the GPTMS and form a bond. Image adapted from Jones [79] © Elsevier.

The synthesis of an interesting type of hybrids, called “cerasomes”, was recently reported by Katagiri et al. [91]; these nanostructures mimic natural liposomes and were produced by a dual process of sol-gel and self-assembly of organoalkoxysilanes. Potential applications include the modelling of biological membranes to investigate the diffusion of ions and lipophilic substances through them [92] as well as the development of new drug delivery systems since cerasomes are able to incorporate different organophylic molecules [93].

A very special type of class-II hybrids includes the so-called “star gels”, which have an organic core surrounded by flexible arms terminated in alkoxy silane groups [94,95] that form a silica-like network via hydrolysis and polycondensation. These materials typically hold the excellent bioactivity and biocompatibility of sol-gel glasses but exhibit a significantly superior toughness, thereby showing promise towards the development of bone-like self-repairing biomaterials [96].

The development of hybrid biomaterials also has the potential to overcome the issues related to the toxicity of (inorganic) nanomaterials. In fact, concerns exist about the fate of nano-sized materials in vivo, including the mesoporous silica and bioactive glass nanoparticles released from composite materials while the polymeric matrix progressively degrades [97]. At present, a clear consensus in the scientific community about this topic does not exist yet and some studies report controversial or partial results [98]. Hudson et al. [99] investigated the toxicity of MCM-41 and MCM-48 in rats, and reported, on the one hand, a good biocompatibility if the silica particles were injected subcutaneously at the sciatic nerve but, on the other hand, a lethal effect after intra-peritoneal or intra-venous injection, which suggested the risk of systemic disease associated to submicronic silica. Guidi et al. [100] analyzed the biological effect of MCM-41 nanoparticles (250 and 500 nm) in vitro in the presence of A549 and RAW264.7 cell types. It was observed that MCM-41 spheres were incorporated within endocytic vacuoles and induced DNA strand breaks and chromosomal alterations in both cell lines.

In summary, implantation of hybrid materials that can behave as a single phase and, thus, undergo congruent dissolution generating ionic products or residues which can be safely metabolized by living tissues and organs could eliminate the risk of the suspected genotoxic effect related to the size and dosage of silicate nanomaterials.

8. Conclusions

The advent of MBGs revolutionized tissue engineering as these biomaterials allow the combination of bone bonding and tissue regeneration abilities with the incorporation (and subsequent release) of drugs and growth factors inside the mesopores. If the presence of an ordered mesoporosity is indeed the strength of MBGs—being responsible for the excellent bioactivity in vitro and in vivo and providing the means to incorporate therapeutic biomolecules—on the other hand, it also represents the major weakness of these materials, since it implies a certain sacrifice of the mechanical properties. This drawback can be mitigated if MBGs are not used alone but are incorporated, for example, in a polymeric matrix to produce a composite or are applied as a coating on a stronger substrate, such as a glass–ceramic scaffold. However, MBG-containing composites still suffer from some limitations, including interfacial weakness between the components, different degradation rates between the organic and inorganic phase, and risk of toxicity associated to the nano-sized mesoporous products released into the body. The latest research directions are addressed to overcoming these problems by the development of inorganic–organic hybrid systems, which degrade at a single rate, are tough and hold the high bioactivity of sol-gel glasses.

9. Methods of Literature Search

A search of the SCOPUS database was conducted from 2000 to 2016 with a subsequent review of accompanying references. Major keywords used singly or in combination included composite, sol-gel, bioactive glass, mesoporous, hierarchical, silicate, scaffold, coating, cement, tissue engineering, and hybrid. Additional references were taken from the bibliography of the references identified through the SCOPUS search, and only the most pertinent have been referenced here.

Acknowledgments: The activity leading to this review has received funding from H2020-NMP-PILOTS-2015 under grant agreement no. 685872 (MOZART) and from the European Research Council (ERC) under grant agreement no. 681798 (BOOST).

Author Contributions: Francesco Baino conceived this review, performed literature search and wrote the manuscript; Sonia Fiorilli and Chiara Vitale-Brovarone contributed to critically revise the paper.

Conflicts of Interest: The authors declare no conflict of interest.

References

1. Rahaman, M.N.; Day, D.E.; Bal, B.S.; Fu, Q.; Jung, S.B.; Bonewald, L.F.; Tomsia, A.P. Bioactive glass in tissue engineering. *Acta Biomater.* **2011**, *7*, 2355–2373.
2. Hench, L.L.; Splinter, R.J.; Allen, W.C.; Greenlee, T.K. Bonding mechanisms at the interface of ceramic prosthetic materials. *J. Biomed. Mater.* **1971**, *5*, 117–141.
3. Hench, L.L. The story of bioglass®. *J. Mater. Sci.: Mater. Med.* **2006**, *7*, 967–978.
4. Kokubo, T.; Takadama, H. How useful is SBF in predicting in vivo bone bioactivity? *Biomaterials* **2006**, *27*, 2907–2915.
5. Wilson, J.; Pigott, G.H.; Schoen F.J.; Hench, L.L. Toxicology and biocompatibility of bioglasses. *J. Biomed. Mater. Res.* **1981**, *15*, 805–817.
6. Li, L.; Clark, A.E.; Hench, L.L. An investigation of bioactive glass powders by sol-gel processing. *J. Appl. Biomater.* **1991**, *2*, 231–239.
7. Jones, J.R.; Lee, P.D.; Hench, L.L. Hierarchical porous materials for tissue engineering. *Philos. Trans. R. Soc. A Math. Phys. Eng. Sci.* **2006**, *364*, 263–281.
8. Kresge, T.; Leonowicz, M.E.; Roth, W.J.; Vartuli, J.C.; Beck, J.S. Ordered mesoporous molecular sieves synthesized by a liquid-crystal template mechanism. *Nature* **1992**, *359*, 710–712.

9. Vallet-Regi, M.; Ramila, A.; Del Real, R.P.; Perez-Pariente, J. A new property of MCM-41: Drug delivery system. *J. Chem. Mater.* **2001**, *13*, 308–311.
10. Arcos, D.; Vallet-Regi, M. Bioceramics for drug delivery. *Acta Mater.* **2013**, *61*, 890–911.
11. Wu, C.; Chang, J. Multifunctional mesoporous bioactive glasses for effective delivery of therapeutic ions and drug/growth factors. *J. Controll. Rel.* **2014**, *193*, 282–295.
12. Sing, K.S.W.; Everett, D.; Haul, R.A.W.; Moscou, L.; Pierotti, R.A.; Rouquerol, J.; Siemieniewska, T. Reporting physisorption data for gas/solid systems. *Pure Appl. Chem.* **1985**, *77*, 603–619.
13. Yan, X.; Yu, C.; Zhou, X.; Tang, J.; Zhao, D. Highly ordered mesoporous bioactive glasses with superior in vitro bone-forming bioactivities. *Angew. Chem. Int. Ed. Engl.* **2004**, *43*, 5980–5984.
14. Vallet-Regi, M.; Ragel, C.V.; Salinas, A.J. Glasses with medical applications. *Eur. J. Inorg. Chem.* **2003**, *2003*, 1029–1042.
15. Owens, G.J.; Singh, R.K.; Foroutan F.; Alqaysi, M.; Han, C.M.; Mahapatra, C.; Kim, H.W.; Knowles, J.C. Sol-gel based materials for biomedical applications. *Prog. Mater. Sci.* **2016**, *77*, 1–79.
16. Ferreira, A.M.; Gentile, P.; Chiono, V.; Ciardelli, G. Collagen for bone tissue engineering. *Acta Biomater.* **2012**, *8*, 3191–3200.
17. El-Fiqi, A.; Lee, J.H.; Lee, E.J.; Kim, H.W. Collagen hydrogels incorporated with surface-aminated mesoporous nanobioactive glass: Improvement of physicochemical stability and mechanical properties is effective for hard tissue engineering. *Acta Biomater.* **2013**, *9*, 9508–9521.
18. El-Kady, A.M.; Ali, A.F.; Farag, M.M. Development, characterization, and in vitro bioactivity studies of sol-gel bioactive glass/poly(L-lactide) nanocomposite scaffolds. *Mater. Sci. Eng. C* **2010**, *30*, 120–131.
19. Li, X.; Wang, X.; Zhang, L.; Chen, H.; Shi, J. MBG/PLGA composite microspheres with prolonged drug release. *J. Biomed. Mater. Res. B* **2009**, *89*, 148–154.
20. Li, X.; Shi, J.; Dong, X.; Zhang, L.; Zeng, H. A mesoporous bioactive glass/polycaprolactone composite scaffold and its bioactivity behavior. *J. Biomed. Mater. Res. A* **2008**, *84*, 84–91.
21. Wu, C.; Zhu, Y.; Chang, J.; Zhang, Y.; Xiao, Y. Bioactive inorganic-materials/alginate composite microspheres with controllable drug-delivery ability. *J. Biomed. Mater. Res. B* **2010**, *94*, 32–43.
22. Wu, C.; Ramaswamy, Y.; Zhu, Y.; Zheng, R.; Appleyard, R.; Howard, A.; Zreiqat, H. The effect of mesoporous bioactive glass on the physicochemical, biological and drug-release properties of poly(DL-lactide-co-glycolide) films. *Biomaterials* **2009**, *30*, 2199–2208.
23. Su, J.; Cao, L.; Yu, B.; Song, S.; Liu, X.; Wang, Z.; Li, M. Composite scaffolds of mesoporous bioactive glass and polyamide for bone repair. *Int. J. Nanomed.* **2012**, *7*, 1255–2547.
24. Yun, H.S.; Kim, S.E.; Park, E.K. Bioactive glass-poly(ϵ -caprolactone) composite scaffolds with 3-dimensionally hierarchical pore networks. *Mater. Sci. Eng. C* **2011**, *31*, 198–205.
25. Luo, Y.X.; Wu, C.T.; Lode, A.; Gelinsky, M. Hierarchical mesoporous bioactive glass/alginate composite scaffolds fabricated by three-dimensional plotting for bone tissue engineering. *Biofabrication* **2013**, *5*, 015005.
26. Chandrasekaran, A.; Novajra, G.; Carmagnola, I.; Gentile, P.; Fiorilli, S.; Miola, M.; Boregowda, M.; Dakshinamoorthy, A.; Ciardelli, G.; Vitale-Brovarone, C. Physico-chemical and biological studies on three-dimensional porous silk/spray-dried mesoporous bioactive glass scaffolds. *Ceram. Int.* **2016**, *42*, 13761–13772.
27. Wu, C.; Zhang, Y.; Zhou, Y.; Fan, W.; Xiao, Y. A comparative study of mesoporous-glass/silk and nonmesoporous-glass/silk scaffolds: physicochemistry and in vivo osteogenesis. *Acta Biomater.* **2011**, *7*, 2229–2236.
28. Li, N.; Jiang, C.; Zhang, X.; Gu, X.; Zhang, J.; Yuan, Y.; Liu, C.; Shi, J.; Wang, J.; Li, Y. Preparation of an rhBMP-2 loaded mesoporous bioactive glass/calcium phosphate cement porous composite scaffold for rapid bone tissue regeneration. *J. Mater. Chem. B* **2015**, *3*, 8558–8566.
29. Jia, T.B.; Chen, J.Y.; Feng, X.X.; Chang, J. Fabrication and characterization of chitosan/mesoporous bioactive glasses porous films. *J. Clin. Rehabil. Tissue Eng. Res.* **2011**, *15*, 7877–7880.
30. Hong, Y.; Chen, X.; Jing, X.; Fan, H.; Guo, B.; Gu, Z.; Zhang, X. Preparation, bioactivity, and drug release of hierarchical nanoporous bioactive glass ultrathin fibers. *Adv. Mater.* **2010**, *22*, 754–758.
31. Hong, Y.; Chen, X.; Jing, X.; Fan, H.; Gu, Z.; Zhang, X. Fabrication and drug delivery of ultrathin mesoporous bioactive glass hollow fibers. *Adv. Funct. Mater.* **2010**, *20*, 1503–1510.
32. Miao, X.; Modification of porous alumina ceramics with bioinert and bioactive glass coatings. *Adv. Mater. Res.* **2008**, *32*, 211–214.

33. Liu, J.; Dong, Z.; Miao, X. Porous alumina/zirconia composite scaffold with bioactive glass 58S33C coating. *J. Biomim. Biomater. Tissue Eng.* **2010**, *6*, 87–104.
34. Esfahani, S.I.R.; Nouri-Khorasani, S.; Lu, Z.F.; Appleyard, R.C.; Zreiqat, H. Effects of bioactive glass nanoparticles on the mechanical and biological behavior of composite coated scaffolds. *Acta Biomater.* **2011**, *7*, 1307–1318.
35. Esfahani, S.I.R.; Tavangarian, F.; Emadi, R. Nanostructured bioactive glass coating on porous hydroxyapatite scaffold for strength enhancement. *Mater. Lett.* **2008**, *62*, 3428–3430.
36. Cauda, V.; Fiorilli, S.; Onida, B.; Verné, E.; Vitale-Brovarone, C.; Viterbo, D.; Croce, G.; Milanesio, M.; Garrone, E. SBA-15 ordered mesoporous silica inside a bioactive glass-ceramic scaffold for local drug delivery. *J. Mater. Sci. Mater. Med.* **2008**, *19*, 3303–3310.
37. Mortera, R.; Onida, B.; Fiorilli, S.; Cauda, V.; Vitale-Brovarone, C.; Bains, F.; Verné, E.; Garrone, E. Synthesis of MCM-41 spheres inside bioactive glass-ceramic scaffold. *Chem. Eng. J.* **2008**, *137*, 54–61.
38. Vitale-Brovarone, C.; Bains, F.; Miola, M.; Mortera, R.; Onida, B.; Verné, E. Glass-ceramic scaffolds containing silica mesophases for bone grafting and drug delivery. *J. Mater. Sci. Mater. Med.* **2009**, *20*, 809–820.
39. Mortera, R.; Bains, F.; Croce, G.; Fiorilli, S.; Vitale-Brovarone, C.; Verné, E.; Onida, B. Monodisperse mesoporous silica spheres inside a bioactive macroporous glass-ceramic scaffold. *Adv. Eng. Mater.* **2010**, *12*, B256–B259.
40. Boccardi, E.; Philippart, A.; Juhasz-Bortuzzo, J.; Beltran, A.; Novajra, G.; Vitale-Brovarone, C.; Spiecker, E.; Boccaccini, A.R. Uniform surface modification of 3D Bioglass®-based scaffolds with mesoporous silica particles (MCM-41) for enhancing drug delivery capability. *Front. Bioeng. Biotechnol.* **2015**, *3*, 177.
41. Horcajada, P.; Ramila, A.; Boulaya, K.; Gonzalez-Calbet, J.; Vallet-Regi, M. Bioactivity in ordered mesoporous materials. *Solid State Sci.* **2004**, *6*, 1295–1300.
42. Izquierdo-Barba, I.; Ruiz-Gonzalez, L.; Doadrio, J.C.; Gonzalez-Calbet, J.M.; Vallet-Regi, M. Tissue regeneration: a new property of mesoporous materials. *Solid State Sci.* **2005**, *7*, 983–989.
43. Izquierdo-Barba, I.; Vallet-Regi, M. Mesoporous bioactive glasses: relevance of their porous structure compared to that of classical bioglasses. *Biomed. Glasses* **2015**, *1*, 140–150.
44. Bains, F.; Fiorilli, S.; Vitale-Brovarone, C. Bioactive glass-based materials with hierarchical porosity for medical applications: review of recent advances. *Acta Biomater.* **2016**, *42*, 18–32.
45. Fiorilli, S.; Bains, F.; Cauda, V.; Crepaldi, M.; Vitale-Brovarone, C.; Demarchi, D.; Onida, B. Electrophoretic deposition of mesoporous bioactive glass on glass-ceramic foam scaffolds for bone tissue engineering. *J. Mater. Sci. Mater. Med.* **2015**, *26*, 21.
46. Molino, G.; Bari, A.; Bains, F.; Fiorilli, S.; Vitale-Brovarone, C. Electrophoretic deposition of spray-dried Sr-containing mesoporous bioactive glass spheres on glass-ceramic scaffolds for bone tissue regeneration. *J. Mater. Sci.* (under review)
47. Zhang, Y.; Xia, L.; Zhai, D.; Shi, M.; Luo, Y.; Feng, C.; Fang, B.; Yin, J.; Chang, J.; Wu, C. Mesoporous bioactive glass nanolayer-functionalized 3D-printed scaffolds for accelerating osteogenesis and angiogenesis. *Nanoscale* **2015**, *7*, 19207–19221.
48. Shi, M.; Zhai, D.; Zhao, L.; Wu, C.; Chang, J. Nanosized mesoporous bioactive glass/poly(lactic-co-glycolic acid) composite-coated CaSiO₃ scaffolds with multifunctional properties for bone tissue engineering. *BioMed Res. Int.* **2014**, *2014*, 323046.
49. Ye, J.; He, J.; Wang, C.; Yao, K.; Gou, Z. copper-containing mesoporous bioactive glass coatings on orbital implants for improving drug delivery capacity and antibacterial activity. *Biotechnol. Lett.* **2014**, *36*, 961–968.
50. Novajra, G.; Boetti, N.G.; Lousteau, J.; Fiorilli, S.; Milanesio, D.; Vitale-Brovarone, C. Phosphate glass fibre scaffolds: tailoring of the properties and enhancement of the bioactivity through mesoporous glass particles. *Mater. Sci. Eng. C* **2016**, *67*, 570–580.
51. Rezwani, K.; Chen, Q.Z.; Blaker, J.J.; Boccaccini, A.R. Biodegradable and bioactive porous polymer/inorganic composite scaffolds for bone tissue engineering. *Biomaterials* **2006**, *27*, 3413–3431.
52. Mohamad Yunus, D.; Bretcanu, O.; Boccaccini, A.R. Polymer-bioceramic composites for tissue engineering scaffolds. *J. Mater. Sci.* **2008**, *43*, 4433–4442.
53. Zhu, M.; Zhang, L.X.; He, Q.J.; Zhao, J.J.; Guo, L.M.; Shi, J.L. Mesoporous bioactive glass-coated poly(L-lactic acid) scaffolds: A sustained antibiotic drug release system for bone repairing. *J. Mater. Chem.* **2011**, *21*, 1064–1072.

54. Yang, S.; Wang, J.; Tang, L.; Ao, H.; Tan, H.; Tang, T.; Liu, C. Mesoporous bioactive glass doped-poly (3-hydroxybutyrate-co-3-hydroxyhexanoate) composite scaffolds with 3-dimensionally hierarchical pore networks for bone regeneration. *Colloids Surf. B Biointerfaces* **2014**, *116*, 72–80.
55. Cabanas-Polo, S.; Philippart, A.; Boccardi, E.; Hazur, J.; Boccaccini, A.R. Facile production of porous bioactive glass scaffolds by the foam replica technique combined with sol-gel/electrophoretic deposition. *Ceram. Int.* **2016**, *42*, 5772–5777.
56. Yazdimaghani, M.; Razavi, M.; Vashae, D.; Raveendra Pothineni, V.; Rajadas, J.; Tayebi, L. Significant degradability enhancement in multilayer coating of polycaprolactone-bioactive glass/gelatin-bioactive glass on magnesium scaffold for tissue engineering applications. *Appl. Surf. Sci.* **2015**, *338*, 137–145.
57. McEntire, B.J.; Bal, B.S.; Rahaman, M.N.; Chevalier, J.; Pezzotti, G. Ceramics and ceramic coatings in orthopaedics. *J. Eur. Ceram. Soc.* **2015**, *35*, 4327–4369.
58. Alonso-Barrio, J.A.; Sanchez-Herraez, S.; Fernandez-Hernandez, O.; Betegon-Nicolas, J.; Gonzalez-Fernandez, J.J.; Lopez-Sastre, A. Bioglass-coated femoral stem. *J. Bone Joint Surg.* **2004**, *86B* (Suppl. II), 138.
59. Schrooten, J.; Helsen, J.A. Adhesion of bioactive glass coating to Ti6Al4V oral implant. *Biomaterials* **2000**, *21*, 1461–1469.
60. Esfahani, S.I.R.; Ebrahimi-Kahrizsangi, R.; Saleh, D.M.; Karbasi, S. Bonding strength, hardness and bioactivity of nano bioglass-titania nanocomposite coating deposited on NiTi nails. *Curr. Nanosci.* **2011**, *7*, 568–575.
61. Jayasuriya, R.L.; Buckley, S.C.; Hamer, A.J.; Kerry, R.M.; Stockley, I.; Tomouk, M.W.; Wilkinson, J.M. Effect of sliding-taper compared with composite-beam cemented femoral prosthesis loading regime on proximal femoral bone remodeling. *J. Bone Joint Surg. Am.* **2013**, *95*, 19–27.
62. Ormsby, R.; McNally, T.; O'Hare, P.; Burke, G.; Mitchell, C.; Dunne, N. Fatigue and biocompatibility properties of a poly(methyl methacrylate) bone cement with multi-walled carbon nanotubes. *Acta Biomater.* **2012**, *8*, 1201–1212.
63. Khaled, S.M.; Charpentier, P.A.; Rizkalla A.S. Physical and mechanical properties of PMMA bone cement reinforced with nano-sized titania fibers. *J. Biomater. Appl.* **2011**, *25*, 515–537.
64. Lennon, A.B. Fracture toughness and fatigue characteristics of bone cements. In: Deb S. (Ed.), *Orthopaedic Bone Cements*, Woodhead Publishing Limited, Cambridge 2008, pp. 265–310.
65. Shadjou, N.; Hasanzadeh, M. Bone tissue engineering using silica-based mesoporous nanobiomaterials: recent progress. *Mater. Sci. Eng. C* **2015**, *55*, 401–409.
66. Slane, J.; Vivanco, J.; Meyer, J.; Ploeg, H.L.; Squire, M. Modification of acrylic bone cement with mesoporous silica nanoparticles: effects on mechanical, fatigue and absorption properties. *J. Mech. Behav. Biomed. Mater.* **2014**, *29*, 451–461.
67. Slane, J.; Vivanco, J.; Ebenstein, D.; Squire, M.; Ploeg, H.L. Multiscale characterization of acrylic bone cement modified with functionalized mesoporous silica nanoparticles. *J. Mech. Behav. Biomed. Mater.* **2014**, *37*, 141–152.
68. Li, H.; Gu, J.; Ali Shah, L.; Siddiq, M.; Hu, J.; Cai, X.; Yang, D. Bone cement based on vancomycin loaded mesoporous silica nanoparticle and calcium sulfate composites. *Mater. Sci. Eng. C* **2015**, *49*, 210–216.
69. Tallia, F.; Gallo, M.; Pontiroli, L.; Bains, F.; Fiorilli, S.; Onida, B.; Anselmetti, G.C.; Manca, A.; Vitale-Brovarone, C. Zirconia-containing radiopaque mesoporous bioactive glasses. *Mater. Lett.* **2014**, *130*, 281–284.
70. Vitale-Brovarone, C.; Verné, E.; Bergui, M.; Onida, B.; Ferraris, S.; Miola, M.; Bains, F.; Tallia, F. Injectable osteoinductive bone cements. Patent No. EP2569025, 29 July 2015.
71. Dadkhah, M.; Pontiroli, L.; Fiorilli, S.; Manca, A.; Tallia, F.; Tcacencu, I.; Vitale-Brovarone, C. Preparation and characterisation of an innovative injectable calcium sulphate based bone cement for vertebroplasty application. *J. Mater. Chem. B* **2017**, *5*, 102–115.
72. Oliveira, M.T.; Potes, J.; Queiroga, M.C.; Castro, J.L.; Pereira, A.F.; Rehman, S.; Dalgarno, K.; Ramos, A.; Vitale-Brovarone, C.; Reis, J.C. Percutaneous vertebroplasty: a new animal model. *The Spine J.* **2016**, *16*, 1253–1262.
73. Wu, C.; Zhang, Y.; Zhu, Y.; Friis, T.; Xiao, Y. Structure-property relationships of silk-modified mesoporous bioglass scaffolds. *Biomaterials* **2010**, *31*, 3429–3438.
74. Ma, J.; Lin, H.; Li, X.; Bian, C.; Xiang, D.; Han, X.; Wu, X.; Qu, F. Hierarchical porous bioactive glasses/PLGA-magnetic SBA-15 for dual-drug release. *Mater. Sci. Eng. C* **2014**, *39*, 21–28.

75. Blaker, J.J.; Nazhat, S.N.; Boccaccini, A.R. Development and characterisation of silver-doped bioactive glass-coated sutures for tissue engineering and wound healing applications. *Biomaterials* **2004**, *25*, 1319–1329.
76. Pratten, J.; Nazhat, S.N.; Blaker, J.J.; Boccaccini, A.R. In vitro attachment of *Staphylococcus epidermidis* to surgical sutures with and without Ag-containing bioactive glass coating. *J. Biomater. Appl.* **2004**, *19*, 47–57.
77. Novak, B.M. Hybrid nanocomposite materials—Between inorganic glasses and organic polymers. *Adv. Mater.* **1993**, *5*, 422–433.
78. Valliant, E.M.; Jones, J.R. Softening bioactive glass for bone regeneration: sol-gel hybrid materials. *Soft Matter* **2011**, *7*, 5083–5095.
79. Jones, J.R. New trends in bioactive scaffolds: the importance of nanostructure. *J. Eur. Ceram. Soc.* **2009**, *29*, 1275–1281.
80. Jones, J.R. Review of bioactive glass: from Hench to hybrids. *Acta Biomater.* **2013**, *9*, 4457–4486.
81. Pereira, A.P.V.; Vasconcelos, W.L.; Orefice, R.L. Novel multicomponent silicate-poly(vinyl alcohol) hybrids with controlled reactivity. *J. Non-Cryst. Solids* **2000**, *273*, 180–185.
82. Martín, A.I.; Salinas, A.J.; Vallet-Regí, M. Bioactive and degradable organic-inorganic hybrids. *J. Eur. Ceram. Soc.* **2005**, *25*, 3533–3538.
83. Lee, E.J.; Teng, S.H.; Jang, T.S.; Wang, P.; Yook, S.W.; Kim, H.E.; Koh, Y.H. Nanostructured poly(ϵ -caprolactone)-silica xerogel fibrous membrane for guided bone regeneration. *Acta Biomater.* **2010**, *6*, 3557–3565.
84. Shin, K.H.; Koh, Y.H.; Kim, H.E. Synthesis and characterization of drug-loaded poly(ϵ -caprolactone)/silica hybrid nanofibrous scaffolds. *J. Nanomater.* **2013**, *2013*, 12.
85. Song, J.H.; Yoon, B.H.; Kim, H.E.; Kim, H.W. Bioactive and degradable hybridized nanofibers of gelatin-siloxane for bone regeneration. *J. Biomed. Mater. Res. A* **2008**, *84*, 875–884.
86. Lee, E.J.; Shin, D.S.; Kim, H.E.; Kim, H.W.; Koh, Y.H.; Jang, J.H. Membrane of hybrid chitosan-silica xerogel for guided bone regeneration. *Biomaterials* **2009**, *30*, 743–750.
87. Lee, E.J.; Jun, S.H.; Kim, H.E.; Kim, H.W.; Koh, Y.H.; Jang, J.H. Silica xerogel-chitosan nano-hybrids for use as drug eluting bone replacement. *J. Mater. Sci. Mater. Med.* **2010**, *21*, 207–214.
88. Li, X.; Xie, Q.R.; Zhang, J.; Xia, W.; Gu, H. The packaging of siRNA within the mesoporous structure of silica nanoparticles. *Biomaterials* **2011**, *32*, 9546–9556.
89. Yabuta, T.; Bescher, E.P.; Mackenzie, J.D.; Tsuru, K.; Hayakawa, S.; Osaka, A. Synthesis of PDMS-based porous materials for biomedical applications. *J. Sol-Gel Sci. Technol.* **2003**, *26*, 1219–1222.
90. Yamamoto, S.; Miyamoto, T.; Kokubo, T.; Nakamura, T. Preparation of polymer-silicate hybrid materials bearing silanol groups and the apatite formation on/in the hybrid materials. *Polym. Bull.* **1998**, *40*, 243–250.
91. Katagiri, K.; Hashizume, M.; Ariga, K.; Terashima, T.; Kikuchi, J. Preparation and characterization of a novel organic-inorganic nanohybrid “cerasome” formed with a liposomal membrane and silicate surface. *Chemistry* **2007**, *13*, 5272–5281.
92. Ruiz-Hitzky, E.; Letaief, S.; Prevot, V. Novel organic-inorganic mesophases: self-templating synthesis and intratubular swelling. *Adv. Mater.* **2002**, *14*, 439–443.
93. Yue, X.; Dai, Z. Recent advances in liposomal nanohybrid cerasomes as promising drug nanocarriers. *Adv. Colloid Interface Sci.* **2014**, *207*, 32–42.
94. Manzano, M.; Arcos, D.; Delgado, M.R.; Ruiz, E.; Gil, F.J.; Vallet-Regí, M. Bioactive star gels. *Chem. Mater.* **2006**, *18*, 5696–5703.
95. Vallet-Regí, M.; Salinas, A.J.; Arcos, D. From the bioactive glasses to the star gels. *J. Mater. Sci. Mater. Med.* **2006**, *17*, 1011–1017.
96. Chung, J.J.; Li, S.; Stevens, M.M.; Georgiou, T.K.; Jones, J.R. Tailoring mechanical properties of sol-gel hybrids for bone regeneration through polymer structure. *Chem. Mater.* **2016**, *28*, 6127–6135.
97. Garcia-Bennet, A.E. Synthesis, toxicology and potential of ordered mesoporous materials in nanomedicine. *Nanomedicine (Lond.)* **2011**, *6*, 867–877.
98. Lin, Y.S.; Hurley, K.R.; Haynes, C.L. Critical considerations in the biomedical use of mesoporous silica nanoparticles. *J. Phys. Chem. Lett.* **2012**, *3*, 364–374.
99. Hudson, S.P.; Padera, R.F.; Langer, R.; Kohane, D.S. The biocompatibility of mesoporous silicates. *Biomaterials* **2008**, *29*, 4045–4055.

100. Guidi, P.; Nigro, M.; Bernardeschi, M.; Scarcelli, V.; Lucchesi, P.; Onida, B.; Mortera, R.; Frenzilli, G. Genotoxicity of amorphous silica particles with different structure and dimension in human and murine cell lines. *Mutagenesis* **2013**, *28*, 171–180.



© 2017 by the authors; licensee MDPI, Basel, Switzerland. This article is an open access article distributed under the terms and conditions of the Creative Commons Attribution (CC BY) license (<http://creativecommons.org/licenses/by/4.0/>).