



POLITECNICO DI TORINO
Repository ISTITUZIONALE

A review on the Surface Integrated Waveguide (SIW): integrating a rectangular waveguide in a planar (M)MIC

Original

A review on the Surface Integrated Waveguide (SIW): integrating a rectangular waveguide in a planar (M)MIC / Ghione, G. - STAMPA. - (2015). ((Intervento presentato al convegno Conference on Substrate Integrated Waveguides and related technology tenutosi a Bari nel 15 Maggio 2015.

Availability:

This version is available at: 11583/2614948 since: 2015-07-15T09:32:03Z

Publisher:

Bari Congressi e Cultura Srl

Published

DOI:

Terms of use:

openAccess

This article is made available under terms and conditions as specified in the corresponding bibliographic description in the repository

Publisher copyright

(Article begins on next page)

A review on the Surface Integrated Waveguide (SIW): integrating a rectangular waveguide in a planar (M)MIC

G. Ghione, *Fellow, IEEE*

Abstract—The paper provides a review on the Surface Integrated Waveguide approach to microwave and millimeter wave circuits. Although the history of SIWs is comparatively recent, this guiding structure has proven the capability to integrate within a (M)MIC approach a rectangular waveguide, allowing for the development of high Q and low-loss component that cannot be implemented in quasi-TEM transmissive media, like the stripline, the microstrip and coplanar waveguide. During the last few years SIW components and circuits have shown excellent capabilities in microwave and millimeter wave applications, providing low-cost, miniaturized implementations for a variety of passive components, such as filters, directional couplers, resonators, and antenna feeding systems. Micromachining has demonstrated the capabilities of the SIW approach within the framework of monolithic integrated passive components, while SIW implementations in flexible substrates will pave the way to low-cost, consumer electronic products that could not be realized in conventional quasi-TEM transmission lines.

Index Terms—Surface Integrated Waveguides, (Monolithic) Microwave Integrated Circuits, microwave filters, couplers, transitions, resonators; micromachined circuits.

I. INTRODUCTION

Progress in the monolithic or hybrid integration of Microwave and Millimeter Wave circuits was fostered, starting from the fifties (see e.g. [1], Sec.16.2) by the introduction of planar TEM or quasi-TEM waveguiding structures, such as the stripline [2], the microstrip [3] and the coplanar waveguide [4]. Monolithic Microwave Integrated Circuits (MMICs) exploiting silicon (Si and SiGe), gallium arsenide (GaAs), gallium nitride (GaN) or indium phosphide (InP) substrates and the related transistor technologies (MOS, HEMT, HBT) are now widespread in a number of terrestrial, space and consumer applications thanks to their intrinsic advantages over metal waveguide circuits, such as low weight, low cost, small size and technological process well suited to mass production. Indeed, during the last 20 years MMICs have brought RF, microwave and millimeter wave electronics to the consumer market. Nevertheless, quasi-TEM waveguiding

structures exploited in monolithic or hybrid MICs suffer from a number of limitations connected to their very propagation mechanisms, wherein the signal is led by a metal strip supported by a dielectric layer. Conductor (skin-effect) and dielectric (loss tangent) attenuations are well known to approximately scale as $f^{1/2}$ and as f , respectively, where f is the operating frequency, thus leading to large losses, above all in the millimeter wave range; moreover, to avoid the onset of spurious higher-order modes the line cross section dimension has to be reduced when increasing the operating frequency, thus making the increase of losses vs. frequency even more remarkable. In conclusion, despite their flexibility, integrated quasi-TEM lines are hardly suitable to low-loss, high-Q components, not to mention their maximum power limitations when compared to conventional non-TEM closed metal waveguides.

The idea of integrating a non-TEM waveguide into a planar microwave circuit was proposed already in 1981 by Yoneyama and Nishida [5]; their millimeter-wave guiding structure (later denoted as the *non-radiative-dielectric waveguide*, NRD) was a dielectric waveguide sandwiched between two metal planes. Lateral confinement was achieved by the in-air separation between the planes being below cutoff, and the evanescent field region around the guide also allowed for the design of simple components such as directional couplers. As an example of the progress in NRD development, in 1997 Wu¹ and Han [6] proposed a technique to integrate the NRD into a planar circuit, presenting for instance a HEMT oscillator where the resonating element was a NRD section. Further work on the NRD approach from prof. Wu and coworkers was presented in the following years, see e.g. [7], [8], [9].

II. FROM THE POST-WALL WAVEGUIDE TO THE INTEGRATED SURFACE WAVEGUIDE (SIW)

Introducing a dielectric element between two metal plates, as required by the NRD concept, implied of course a number of technological problems concerning the circuit layout and manufacturing, so that the NRD approach was hardly compatible with the conventional planar technology. These

G. Ghione is with the Dipartimento di Elettronica e Telecomunicazioni, Politecnico di Torino, Corso duca degli Abruzzi 24, 10129 Torino, Italy (e-mail: giovanni.ghione@polito.it).

¹ Prof. Ke Wu of École Polytechnique de Montréal was to become one of the main investigators of the Surface Integrated Waveguide.

shortcomings could be overcome by replacing below-cutoff lateral field confinement by a process-compatible kind of conductor wall confinement, leading to a structure somewhat similar to a closed waveguide, albeit amenable to planar integration.

While introducing a full lateral metal wall within a planar process was hardly feasible, an intermediate solution based on laterally confining the field through a periodic array of metal posts emerged at the end of the 1990s under the name of "Post-wall waveguide" (Fig. 1), proposed in 1998 by Hirokawa et al. as an antenna feeding element, see [10]. The post-wall waveguide can be built in a circuit board by means of conventional via-hole techniques. Variations in the post-wall approach were then proposed in 1998 by Uchimura et al. [11] under the denomination of "laminated waveguide", see Fig. 2. Besides the presence of confining posts, this approach exploited additional lateral metal planes to improve the lateral field confinement.

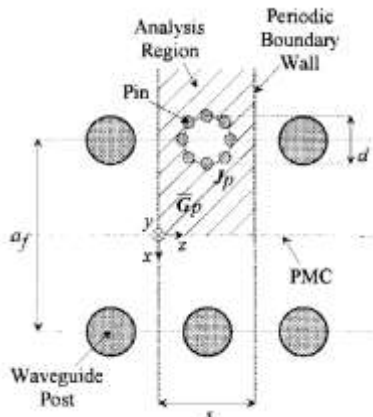


Fig. 1. Model for a Post Wall waveguide ([10], Fig.4).

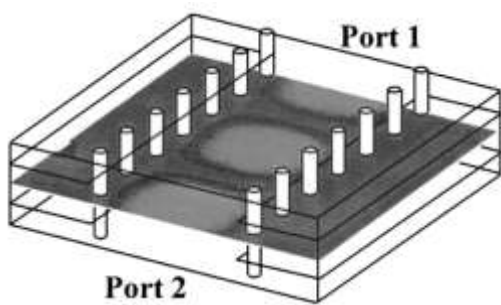


Fig. 2. Laminated waveguide and its H-plane electric field distribution (from [11], Fig. 3).

Prof. Wu's research group began to be involved in the development of the post-wall approach around 2000; in a paper from February 2001 [12] a microstrip to rectangular waveguide integrated transition is proposed where the on-substrate synthesized waveguide is implemented either through metallized via-hole arrays or through metallized grooves, see Fig. 3. The same group presented in [13] an

integrated coplanar waveguide to post-wall waveguide transition. In the review paper presented at the 2001 APMC [14] prof. Wu again showed a comparison between different solutions for integrated waveguides, among which the NRD and the post-wall waveguide were discussed, without using, curiously enough, the "post-wall" keyword. While the "post-wall" name still survives in the Wikipedia article devoted to the Surface Integrated Waveguide (SIW), see [15], the latter name apparently surfaced in 2002 with a few papers by the Wu's research group in cooperation with the EM research group of the Università di Pavia, Italy, see [16], [17].

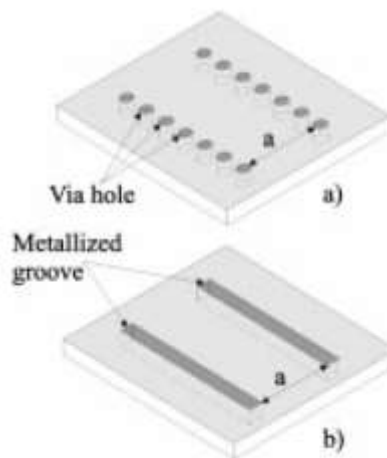


Fig. 3. On-substrate synthesized waveguide techniques: (a) metallized via-hole arrays and (b) metallized grooves (from [12], Fig. 3).

III. SIW PROPAGATION CHARACTERISTICS AND SIW COMPONENTS

Papers [16] and [17] present a thorough investigation of the SIW propagation characteristics. Besides, complex SIW components can be analyzed today with comparative ease through electromagnetic modelling tools such as the Ansys HFSS. The SIW waveguide behaves like a rectangular waveguide supporting a TE_{10} propagation mode, whose cutoff frequency is independent on the waveguide thickness h (see Fig. 4, a significant advantage, due to the small thickness of substrates). From [17] the fundamental mode cutoff frequency can be approximated as:

$$f_c = \frac{c_0}{2\sqrt{\epsilon_r}} \left(W - \frac{D^2}{0.95b} \right)^{-1}$$

where c_0 is the velocity of light *in vacuo*, ϵ_r the substrate relative permittivity, W the spacing between the posts centers, D the post diameter, and b the post spacing, see Fig. 4. The dielectric thickness only impacts on the waveguide characteristic impedance (that is typically low), and not on the propagation characteristics. An analysis of the loss mechanisms in the SIW can be found in [18], [19].

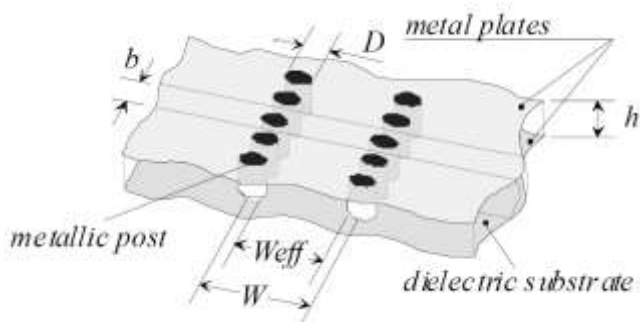


Fig. 4. SIW geometry (from [21], Fig. 2).

In general, metal, dielectric and leakage losses are present, leading however to a decreasing attenuation as a function of the operating frequency. Reviews of the early developments in SIW design and components can be found in [20], [21], [22].

Since the SIW introduction many SIW components were proposed, designed and realized: resonators [23], [24], directional couplers [25], power dividers [26], filters [27], [28]. An example of multi-branch power divider with microstrip input and output is shown in Fig. 5, clearly showing the PCB-like via-hole technique exploited to allocate the metallized posts. Notice also the design of SIW bends and tuning elements that can be nicely integrated in the circuit layout.

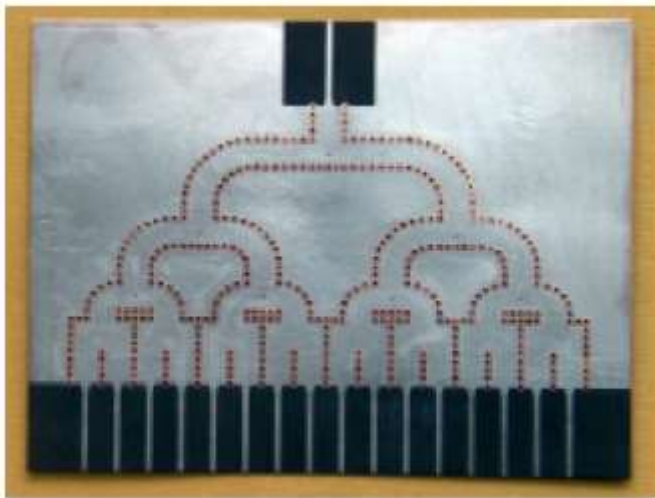


Fig. 5. SIW power divider with microstrip input and output (from [21], Fig. 4).

IV. THE SIW FROM DIELECTRIC TO SEMICONDUCTOR SUBSTRATES AND BEYOND

The initial SIW development made use of a technology somewhat similar to the Printed Circuit Board (PCB) process, exploiting low-epsilon substrates. However, the potential of the technology in heavier and mechanically harder substrates was recognized already at an early stage, with the development of SIWs on light-temperature co-fired ceramic (LTCC), see [29]. A further step naturally led to the introduction

of SIW components based on Si substrates, exploiting for their realization micromachining techniques. A few representative references on such developments are [30], [31], [32], [33]. Micromachining on Si substrates (see [33] for a detailed process flow example) allows for process repeatability, low cost, and reduced size, enabling the SIW technology to cover high-Q component needs from the Ka band till the mm-wave range. An example of micromachined filter, via-hole technology and filter response is shown in Fig. 6 [30].

More recently, the SIW design was extended to yet another application field by exploiting organic, flexible, textile and/or wearable, eco-friendly substrates, see [34], [35]. Finally, an air-filled SIW concept was recently proposed to overcome power limitations associated to the use of dielectrics at millimeter waves, see [36].

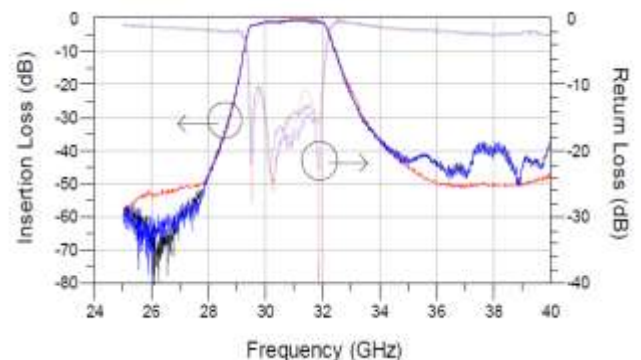
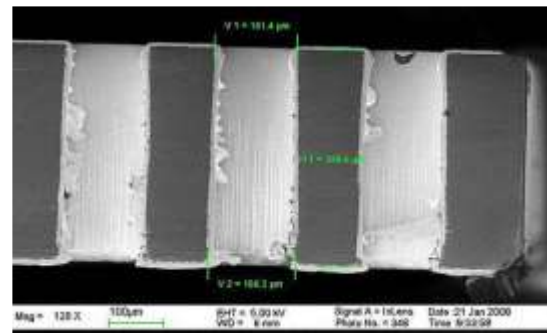


Fig. 6. Micromachined Si-based filter, via hole technology and measured filter response, from [30], Fig. 3-5.

V. DEVELOPMENT OF RESEARCH ON SURFACE INTEGRATED WAVEGUIDES

Research on Surface Integrated Waveguides has already led to quite impressive results in terms of components, and some system implementations have already been proposed, see e.g.

[37] concerning the design of a 77-GHz automotive radar front-end exploiting SIW passive high-Q elements. Another interesting and innovative example concerns the possibility of integrating SIW components with electro-optic devices, as discussed in [38], see Fig. 7.

A search on the “Surface Integrated Waveguide” keyword in the IEEE-Explore database generates so far (April 7, 2015) 1517 hits distributed in years 2002-2015 (prior to 2002 the keyword was not clearly used as such, and therefore earlier versions of the keyword, such as the post-wall waveguide, are missing from the search). If we are inclined to carry out a somewhat futile exercise in bibliometry, the h-factor of this collective set is 34 and the most widely quoted paper (267 hits) is, not unexpectedly, [18]. Apart from these remarks, the number of papers in the SIW area has been increasing steadily during the last few years, with a quite impressive total citation count of about 600 citations per year, see Fig. 8 (the source is always IEEE Explore). As a final remark, a web site <http://siwspace.com/> collects a number of data, references and design examples in Surface Integrated Waveguides.

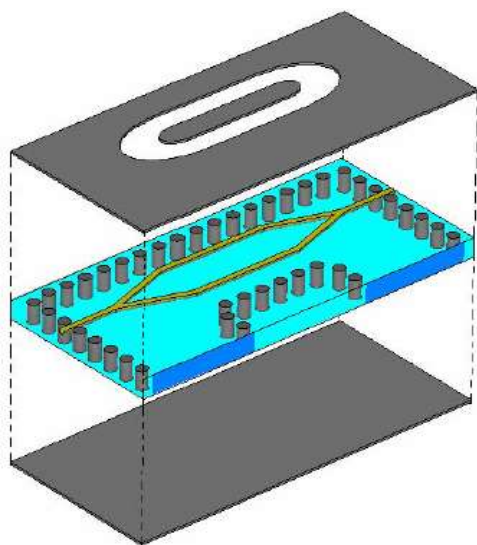


Fig. 7. SIW concept for an electro-optic Lithium Niobate Mach-Zehnder modulator, from [38], Fig. 8.

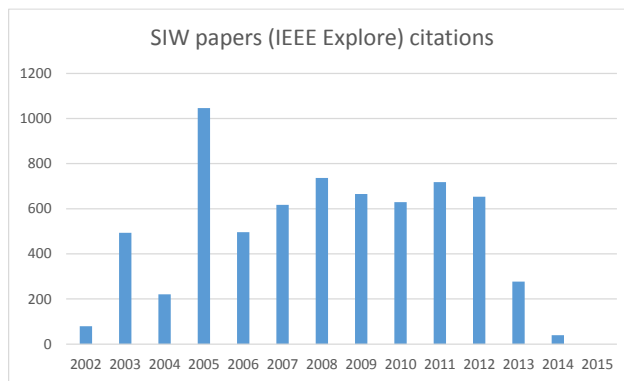
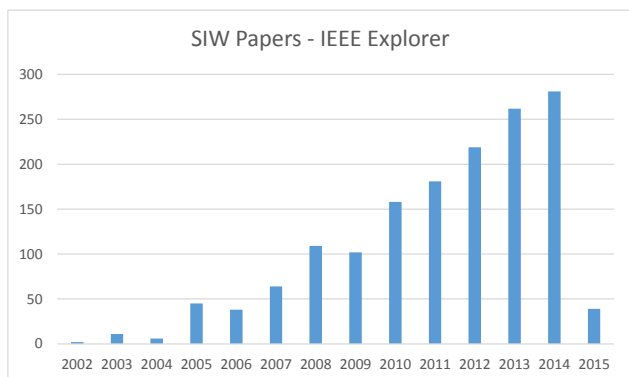


Fig. 8. Number of papers with the SIW keyword in the IEEE Explore database according to the publication year (above) and collective citation count for the set as a function of the year of citation (below). The source is the IEEE Explore web site as of April 7, 2015.

VI. CONCLUSION

About 15 years after its introduction, the SIW has emerged as an interesting alternative technology able to be integrated within a planar substrate high-Q components, well suited to bridge the gap between well established (M)MIC technologies and waveguide-compatible elements, like resonators, filters, and radiators or radiator arrays with their feeding networks. Recent developments in micromachining make this approach even more interesting, thanks to its promise in miniaturization and technology standardization.

REFERENCES

- [1] T.K. Sarkar, R.J. Mailloux, A.A. Oliner, M. Salazar-Palma and D.L. Sengupta, *History of wireless*, pp.556-559, John Wiley and Sons, 2006.
- [2] R.M. Barrett, “Etched sheets serve as microwave components,” *Electronics*, vol. 25, pp. 114-118, June 1952.
- [3] D.D. Grieg and H.F. Engelmann, “Microstrip-A New Transmission Technique for the Kilomegacycle Range,” *Proceedings of the IRE*, vol.40, no.12, pp.1644-1650, Dec. 1952.
- [4] C.P. Wen, “Coplanar Waveguide: A Surface Strip Transmission Line Suitable for Nonreciprocal Gyromagnetic Device Applications,” *IEEE Trans. Microwave Theory and Tech.*, vol.17, no.12, pp.1087-1090, Dec 1969.
- [5] T. Yoneyama and S. Nishida, “Nonradiative dielectric waveguide for millimeter wave integrated circuits,” *IEEE Trans. Microwave Theory and Tech.*, vol. 29, pp.1188-1192. Nov. 1981.
- [6] K. Wu and L. Han, “Hybrid integration technology of planar circuits and NRD-guide for cost effective microwave and millimeter-wave applications,” *IEEE Trans. Microwave Theory and Tech.*, vol.45, pp.946-954, June 1997.
- [7] I. Dallaire and K. Wu, “Complete characterization of transmission losses in generalized non-radiative dielectric (NRD) waveguide,” *IEEE Trans. Microwave Theory and Tech.*, Vol. 48, pp. 121-125, Jan. 2000.

- [8] K. Wu and Y. Cassivi, "Recent advances of hybrid planar INRD guide technology for millimeter-wave integrated circuit design," *TELSIKS'01*, Nis, Yugoslavia. Sep. 19-21, 2001.
- [9] K. Wu and F. Boone, "Guided-Wave Properties of Synthesized Non-Radiating Dielectric Waveguide for Substrate Integrated Circuits (SICs)," *2001 IEEE MTT-S Intern. Microwave Symp.*, pp.723-726, Phoenix, USA.
- [10] J. Hirokawa and M. Ando, "Single-layer feed waveguide consisting of posts for plane TEM wave excitation in parallel plates," *IEEE Transactions on Antennas and Propagation*, vol.46, no.5, pp.625-630, May 1998.
- [11] H. Uchimura, T. Takenoshita and M. Fujii, "Development of a "laminated waveguide", " *IEEE Trans. Microwave Theory and Tech.*, vol.46, no.12, pp.2438-2443, Dec. 1998.
- [12] D. Deslandes and K. Wu, "Integrated microstrip and rectangular waveguide in planar form," *IEEE Microwave and Wireless Components Letters*, vol. 11, no. 2, Feb. 2001, pp. 68-70.
- [13] D. Deslandes and K. Wu, "Integrated transition of coplanar to rectangular waveguides", *2001 IEEE MTT-S International Microwave Symposium Digest*, vol.2, pp.619-622, 20-24 May 2001.
- [14] Ke Wu, "Integration and interconnect techniques of planar and non-planar structures for microwave and millimeter-wave circuits - current status and future trend," *Proceedings of APMC2001*, Taipei, Taiwan, R.O.C., pp.411-416.
- [15] *Post-wall waveguide* in Wikipedia, compiled 2009-2014, web site: http://en.wikipedia.org/wiki/Post-wall_waveguide.
- [16] D. Deslandes and K. Wu, "Design Consideration and Performance Analysis of Substrate Integrated Waveguide Components," *Proceedings of 32nd European Microwave Conference*, 2002, Milan, Sept. 2002.
- [17] Y. Cassivi, L. Perregrini, P. Arcioni, M. Bressan, K. Wu and C. Conciauro, "Dispersion Characteristics of Substrate Integrated Rectangular Waveguide," *IEEE Microwave and Wireless Component Letters*, vol. 12, no.9, Sept. 2002, pp. 333-335.
- [18] F. Xu and K. Wu, "Guided-wave and leakage characteristics of substrate integrated waveguide," *IEEE Trans. Microwave Theory and Tech.*, 2005, vol. 53, no. 1, pp. 66-73.
- [19] D. Deslandes and K. Wu, "Accurate modeling, wave mechanisms, and design considerations of a substrate integrated waveguide," *IEEE Trans. Microwave Theory and Tech.*, 2006, vol. 54, no. 6, pp. 2516-2526.
- [20] K. Wu, D. Deslandes and Y. Cassivi, "The Substrate Integrated Circuits - A New Concept for High-Frequency Electronics and Optoelectronics," *TELSIS 2003*, Nis, October 1-3, 2003, pp.P-III-P-X.
- [21] K. Wu, D. Deslandes and Y. Cassivi, "The Substrate Integrated Circuits - A New Concept for High-Frequency Electronics and Optoelectronics," *Mikrotalasna revija*, Dec. 2003, pp.1-9.
- [22] M. Bozzi, L. Perregrini, K. Wu and P. Arcioni, "Current and Future Research Trends in Substrate Integrated Waveguide Technology," *Radioengineering*, Vol. 18, No. 2, June 2009, pp.201-209.
- [23] Y. Cassivi, L. Perregrini, K. Wu and G Conciauro, "Low-Cost and High-Q Millimeter-Wave Resonator Using Substrate Integrated Waveguide Technique," *Proceedings of 32nd European Microwave Conference*, 2002, pp.1-4, 23-26 Sept. 2002.
- [24] Y. Cassivi and K. Wu, "Low Cost Microwave Oscillator Using Substrate Integrated Waveguide Cavity," *IEEE Microwave and Wireless Component Letters*, vol. 13, no. 2, Feb. 2003. pp. 48-50.
- [25] Y. Cassivi, D. Deslandes and K. Wu, "Substrate Integrated Waveguide Directional Couplers," *ASIA-Pacific Conf. 2002*, Kyoto, Nov. 2002.
- [26] S. Germain, D. Deslandes and K. Wu, "Development of substrate integrated waveguide power dividers," *IEEE Canadian Conference on Electrical and Computer Engineering (CCECE)*, 2003, vol.3, pp.1921-1924, May 4-7, Montréal, Canada.
- [27] D. Deslandes and K. Wu, "Design of Millimeter-wave Substrate Integrated Waveguide Filters," *IEEE Canadian Conference on Electrical and Computer Engineering (CCECE)*, 2003, vol.3, pp. 1917-1920, May 4-7, Montréal, Canada.
- [28] D. Deslandes, and K. Wu, "Single-substrate integration technique of planar circuits and waveguide filters," *IEEE Trans. Microwave Theory and Tech.*, Feb. 2003, vol. 51, no. 2, pp. 593-596.
- [29] Hao Li, Wei Hong, Tie Jun Cui, Ke Wu, Yu Lin Zhang and Li Yan, "Propagation Characteristics of Substrate Integrated Waveguide Based on LTCC," *2003 IEEE MTT-S Digest*, pp. 2045-2048.
- [30] Yu Yuan Wei, Zhang Yong and Zhu Jian, "Monolithic Silicon Micromachined Ka-band Filters," *Microwave and Millimeter Wave Technology (ICMMT) 2008*, vol.3, pp.1397-1400, 21-24 April 2008
- [31] Ke Wu, "Towards the development of terahertz substrate integrated circuit technology," *2010 Topical Meeting on Silicon Monolithic Integrated Circuits in RF Systems (SiRF)*, pp.116-119, 11-13 Jan. 2010.
- [32] Chang-Wook Baek and Sungjoon Lim, "Simple silicon SIWs," *Electronics Letters*, vol.47, no.5, pp.294-294, March 3, 2011.
- [33] I.-J. Hyeon, W.-Y. Park, S. Lim and C.-W. Baek, "Fully micromachined, silicon-compatible substrate integrated waveguide for millimetre-wave applications," *Electronics Letters*, vol.47, no.5, pp.328-330, March 3, 2011.
- [34] M. Bozzi and R. Moro, "SIW components and antennas based on eco-friendly materials and technologies: State-of-the-art and future applications," *2014 IEEE Topical Conference on Wireless Sensors and Sensor Networks (WiSNet)*, pp.58-60, 19-23 Jan. 2014.
- [35] R. Moro, S. Agneessens, H. Rogier, A. Dierck, and M. Bozzi, "Textile Microwave Components in Substrate Integrated Waveguide Technology," *IEEE Trans. Microwave Theory and Tech.*, vol.63, no.2, pp.422-432, Feb. 2015.
- [36] F. Parment, A. Ghiotto, T.-P. Vuong, J.-M. Duchamp and K. Wu, "Air-Filled Substrate Integrated Waveguide for Low-Loss and High Power-Handling Millimeter-Wave Substrate Integrated Circuits," *IEEE Trans. Microwave Theory and Tech.*, vol.63, no.4, pp.1228-1238, April 2015.
- [37] Rui Li, Cheng Jin, Siong Chiew Ong, Teck Guan Lim, Ka Fai Chang and Soon Wee Ho, "Embedded Wafer Level Packaging for 77-GHz Automotive Radar Front-End With Through Silicon Via and its 3-D Integration," *IEEE Transactions on Components, Packaging and Manufacturing Technology*, vol.3, no.9, pp.1481-1488, Sept. 2013.
- [38] K. Wu, E. Mortazy and M. Bozzi, "Development of Microwave and Millimeter-Wave Traveling-Wave Electro-Optical Devices Using Substrate Integrated Circuit Concept," *2007 IEEE International Topical Meeting on Microwave Photonics*, pp.62-65, 3-5 Oct. 2007.