

THE FACULTY OF THE LAW SCHOOL



FRANCIS A. ALLEN, Professor of Law. A.B. 1941, Cornell College (Iowa); LL.B. 1946, Northwestern University. Admitted to practice in Illinois, 1950. Legal staff, Chicago Housing Authority, 1946. Law clerk, Mr. Chief Justice Vinson, United States Supreme Court, 1946-48. Assistant professor of law, 1948-50, and associate professor of law, Northwestern University, 1950-53; professor of law, Harvard University, 1953-56. Served with United States Army Air Forces, 1942-45. Attorney, Wage Stabilization Board, 1951. Editor-in-chief, *Illinois Law Review*, 1942.

ALLEN H. BARTON, Assistant Professor of Sociology. A.B. 1947, Harvard University; graduate study at Columbia University, 1947-53. Lecturer in sociology and director of research project on Sociological Problems of Economic Planning, University of Oslo, 1948-49; instructor in sociology and research associate on problems of advanced training in social research, Columbia University, 1953-54.



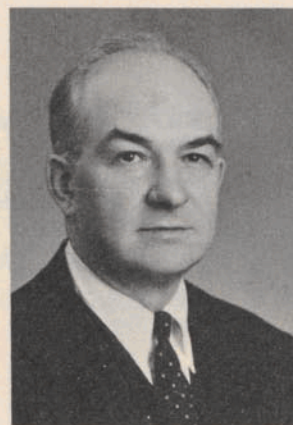
GEORGE G. BOGERT, James Parker Hall Professor of Law Emeritus; Professor of Law, University of California, Hastings College of Law, San Francisco, since 1949. A.B. 1906, LL.B. 1908, Cornell. Admitted to practice in New York, 1908; in Illinois, 1936. Practiced with A. C. Eustace, Elmira, New York, 1908-11; with Whitman, Ottinger and Ransom, New York City, 1923-24. Assistant professor of law, 1911-16, and professor of law, Cornell University, 1916-25; dean of The Law School, 1921-25; professor of law, University of Chicago, 1925-49. Commissioner, Uniform Laws for New York, 1920-25, and Illinois, 1927-49; life member, since 1949. Secretary, National Conference Commissioners on Uniform State Laws, 1922-28. President, Association of American Law Schools, 1936. Member, American and Chicago Bar associations. Life member, American Law Institute. Author, *The Sale of Goods in New York* (1912); *The Elements of the Law of Trusts* (1914); *Huffcut's Business Law* (rev. ed., 1917, 1925, 1934); *Hornbook on Trusts* (1921; 3d ed., 1952); *Commentaries on Conditional Sales* (1924); *Trusts and Trustees* (7 vols.; 1935); *Supplements* (1938, 1940, 1941, 1942, 1944, 1946, 1948, 1950, 1952, 1954); co-editor, with W. E. Britton, *Cases on Sales* (1936; 2d ed., 1947); *Cases on Trusts* (1939; 2d ed., 1950). Draftsman, Uniform Conditional Sales Act, 1918; Uniform State Law for Aeronautics, 1921; Uniform Trustee's Accounting Act, 1936; Uniform Trusts Act, 1937; Uniform Common Trust Fund Act, 1938. Editor, *Cornell Law Quarterly*, 1915-17.

WALTER J. BLUM, Professor of Law. B.A. 1939, J.D. 1941, University of Chicago. Admitted to practice in District of Columbia, 1941; in Illinois, 1941. General Counsel's Office, OPA, 1941-43. In military service, 1943-46. Member, Chicago Bar and American Bar associations and Federal Tax Forum of Chicago. Author, *The Uneasy Case for Progressive Taxation* (University of Chicago Press, 1953) (with Harry Kalven, Jr.).



BRAINERD CURRIE, Professor of Law. A.B. 1937, LL.B. 1935, Mercer University; LL.M. 1941, Columbia University; Jur.Sc.D. 1955, Columbia University. Admitted to practice in Georgia, 1935. Practiced with Park and Strozier, Macon, Georgia, 1934-35. Instructor in law, Mercer University, 1935-37; assistant professor of law, Wake Forest College, 1937-41; associate professor of law, University of Georgia, 1941-42; professor of law, Duke University, 1946-49; professor of law, University of California, Los Angeles, 1949-52; dean and professor of law, University of Pittsburgh, 1952-53; legal positions in OPA, 1942-45; assistant general counsel and associate general counsel, Office of Economic Stabilization, 1945-46. Alternate member, National Enforcement Commission (ESA), 1953. Editor, *Law and Contemporary Problems*, 1946-49; editor-in-chief, *Journal of Legal Education*, 1947-49.

WILLIAM W. CROSSKEY, Professor of Law. A.B. 1923, LL.B. 1926, Yale University. Admitted to practice in New York, 1928. One year with Chief Justice Taft of the United States Supreme Court; two and one-half years with Davis, Polk, Wardwell, Gardiner and Reed, New York City; one year with Allied Chemical and Dye Corporation, New York City; four years with Milbank, Tweed, Hope and Webb, New York City. Author, *Politics and the Constitution in the History of the United States* (2 vols.; University of Chicago Press, 1953).



AARON DIRECTOR, Professor of Economics. Ph.B. 1924, Yale University; 1927-30, University of Chicago. Instructor in economics, University of Chicago, 1931-35; visiting professor, Howard University, 1945-46. Editor, *Defense, Controls, and Inflation* (1952).

ALLISON DUNHAM, Professor of Law. A.B. 1936, Yankton College; LL.B. 1939, Columbia University. Admitted to practice in New York, 1940. Practiced with Cravath, deGersdorff, Swaine and Wood, New York City, 1938. Secretary to Mr. Justice Stone, 1939-41. Assistant professor of law, Indiana University, 1945-47; assistant professor of law, 1947-49, and associate professor of law, Columbia University School of Law, 1949-51; visiting professor of law, University of New Zealand, 1953. Associate reporter, Uniform Commercial Code, Secured Transactions. Member, American and Chicago Bar associations. Author, *Modern Real Estate Transactions—Cases and Materials* (Foundation Press, 1952); *Law Revision Studies, Draft of a Proposed Illinois Habitual Criminal Act; Study and Act Relating to Vesting of Possession before Payment in Eminent Domain Proceedings* ("Law Revision Research Series" [1955]).

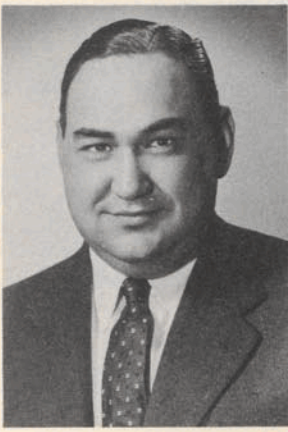


HARRY KALVEN, JR., Professor of Law. A.B. 1935, J.D. 1938, University of Chicago. Admitted to practice in Illinois, 1939. Practiced with Frantz and Johnston, Chicago, 1939-42. Acting Dean of The Law School, summer, 1950. Served with United States Army, Signal Corps, 1942-45. Author, *The Uneasy Case for Progressive Taxation* (University of Chicago Press, 1953) (with Walter J. Blum).

WILBER G. KATZ, James Parker Hall Professor of Law. A.B. 1923, University of Wisconsin; LL.B. 1926, S.J.D. 1930, Harvard University. Admitted to practice in New York, 1927. Practiced with Root, Clark, Buckner, Howland and Ballantine, New York City, 1927-29. Dean of The Law School, 1939-50. Author, *Accounting in Law Practice* (with W. J. Graham, 1932); *Cases on Public Utility Regulation* (1930); *Cases and Other Authorities on Federal Jurisdiction and Procedure* (with F. Frankfurter, 1931); *Cases on Business Corporations* (with Bernard Meltzer, 1949); *Accounting* (1954).



NICHOLAS DEBELLEVILLE KATZENBACH, Professor of Law. B.A. 1945, Princeton University; Rhodes Scholar, Oxford University, 1947-49; LL.B. 1947, Yale University. Admitted to practice in New Jersey, 1950. Associate of Katzenbach, Gildea and Rudner, Trenton, New Jersey, 1950. Counsel, 1950-52, and Consultant, Department of the Air Force, 1952-54. Assistant instructor, Yale University, 1946-47; associate professor, Yale Law School, 1952-56. Member, American Bar and New Jersey State Bar associations. Served with United States Air Force, 1942-45.



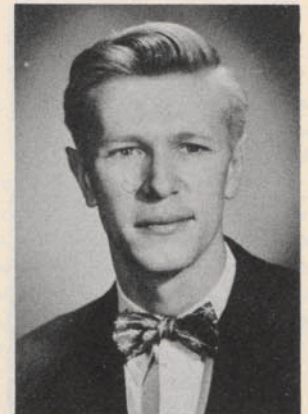
PHILIP B. KURLAND, Professor of Law. A.B. 1942, University of Pennsylvania; LL.B. 1944, Harvard University. Admitted to practice in New York, 1945. Law clerk, Judge Jerome N. Frank, 1944-45, and Mr. Justice Frankfurter, 1945-46. Attorney, Department of Justice, 1946-47. With firm of Milton Pollack, New York City, 1947-48; partner, Kurland and Wolfson, New York City, 1948-50. Teaching fellow, New York University, part time, 1948-49; visiting assistant professor of law, Indiana University, 1950, and Stanford University, summer, 1951; assistant professor of law, 1950-52, and associate professor of law, Northwestern University, 1952-53. Associate general counsel, Economic Stabilization Agency, 1951. Guggenheim Fellow, 1949-50, 1955-56. Member, Bar Association of the City of New York and Chicago Bar Association. Co-author, Robertson and Kirkham, *Jurisdiction of the Supreme Court of the United States* (Wolfson and Kurland ed., 1951). President, *Harvard Law Review*, 1944; managing editor, *Federal Bar Journal*, 1945-47.

EDWARD H. LEVI, Dean and Professor of Law. Ph.B. 1932, J.D. 1935, University of Chicago; Sterling Fellow, Yale University, 1935-36; J.S.D. 1938. Admitted to practice in Illinois, 1936; to United States Supreme Court, 1942. Special assistant to Attorney General of United States, 1940-45; first assistant, Antitrust Division, 1944-45. Counsel, Subcommittee on Monopoly Power, House Judiciary Committee, 1950. Member, Research Advisory Board, Committee on Economic Development, 1951-54; Advisory Committee, Twentieth Century Fund Antitrust Study; Chicago Bar, Illinois Bar, and American Bar associations. Author, *Introduction to Legal Reasoning* (1949); *Four Talks on Legal Education* (1952). Co-editor, with J. W. Moore, of fourth edition of Gilbert's *Collier on Bankruptcy*; with Roscoe Steffen, of *Elements of Law* (1950). Reporter, Bankruptcy and Arrangement Law for the International Congress of Comparative Law, 1937-38.



KARL N. LLEWELLYN, Professor of Law. B.A. 1915, Yale University; University of Lausanne, 1911; University of Paris, 1914; LL.B. 1918, J.D. 1920, Yale University. Practiced with firm of Shearman and Sterling, New York City, 1920-22. Instructor in law, full time, 1919-20, assistant professor of law, 1922-23, and associate professor of law, Yale Law School, 1923-25; associate professor of law, 1925, professor of law, 1927, and professor of jurisprudence, Columbia University School of Law, 1930; guest professor, University of Leipzig, 1928, 1931-32; visiting professor of law, Harvard University, 1948-49. Draftsman, various uniform commercial acts. Commissioner on Uniform State Laws of New York from 1926 to 1951. Chief reporter, Uniform Commercial Code. Author, *Cases and Materials on Sales*; *Bramble Bush*; *Put in His Thumb*; *The Cheyenne Way* (with E. A. Hoebel).

JO DESHA LUCAS, Assistant Professor of Law and Assistant Dean. A.B. 1947, Syracuse University; M.P.A. 1951, Maxwell Graduate School of Citizenship and Public Affairs; LL.B. 1951, University of Virginia; L.L.M. 1952, Columbia University. Admitted to practice in Virginia, 1952. Served with United States Army Air Force, 1943-46. Member, Virginia Bar Association.

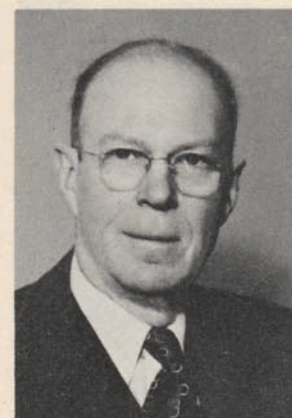


BERNARD D. MELTZER, Professor of Law. A.B. 1935, University of Chicago; LL.M. 1938, Harvard Law School. Admitted to practice in Illinois, 1938. With Mayer, Meyer, Austrian and Platt, Chicago, 1940. Professorial lecturer, University of Chicago Law School, 1946-47. Hearing commissioner, National Production Authority, 1952-53. Member, Chicago, Illinois, and American Bar associations and American Society of International Law. Lieutenant (j.g.), U.S.N.R. Special assistant to the Assistant Secretary of State; assistant to the Chairman of the Securities and Exchange Commission; hearing commissioner, NPA. Counsel of Vedder, Price, Kaufmann and Kammholz.



SOIA MENTSCHIKOFF, Professorial Lecturer. A.B. 1934, Hunter College; LL.B. 1937, Columbia Law School. Admitted to practice in New York, 1938. Practiced with Scandrett, Tuttle & Chalaire, 1937-41; Spence, Windels, Walser, Hotchkiss and Angell, 1941-44; Spence, Hotchkiss, Parker and Duryee, 1944-47, all in New York City. Visiting professor of law, Harvard Law School, 1947-49. Associate chief reporter, Uniform Commercial Code, 1944-53; associate reporter, Sales Article of Code, 1942-53; reporter, Investment Securities Article of Code, 1945-53. Member, Bar Association of the City of New York, New York State Bar Association, and American Bar Association.

ERNST W. PUTTKAMMER, Professor of Law Emeritus. A.B. 1914, Princeton University; J.D. 1917, University of Chicago. Practiced with Fisher, Boyden, Kales and Bell, Chicago, 1919-20. Faculty editor, *University of Chicago Law Review*. National president, Order of the Coif, 1941-55. Author, *Administration of Criminal Law* (University of Chicago Press, 1953).



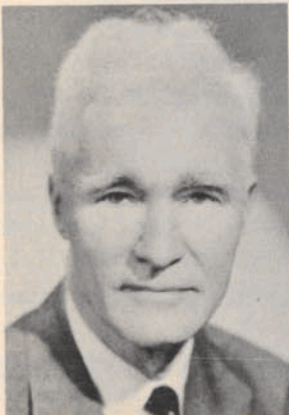
JAMES M. RATCLIFFE, Assistant Dean and Director of Placement. A.B. 1946, J.D. 1950, University of Chicago. Admitted to practice in Illinois, 1950. Served with the United States Air Force, 1943-46. Member, Chicago Bar, Illinois State Bar, and American Bar associations.

MAX RHEINSTEIN, Max Pam Professor of Comparative Law. Dr.Utr.Iur. 1924, University of Munich. Admitted to practice in Munich, 1926. Research member of Kaiser Wilhelm Institute of Foreign and International Private Law, Berlin, 1926–33; Privatdozent at University of Berlin, 1931–33; visiting professor, University of Puerto Rico, 1943–44, University of Wisconsin, 1945, University of Michigan, 1948, Louisiana State University, 1949, and University of Frankfurt, 1953. Member of staff of Office of Military Government for Germany, 1945–46. Member, American Law Institute. Author, *The Contractual Relation in Anglo-American Law* (German); *Cases on Decedents' Estates* (1947); *The Sociology of Law of Max Weber* (1954); *Max Weber on Law in Economy and Society*, edited and annotated by Max Rheinstein (Harvard University Press, 1954); *Festschrift für Ernst Rabel*, edited with Hans Dolle and A. Zweigert (Tübingen, 1954); *Law of Decedents' Estates* (2d ed., 1955).



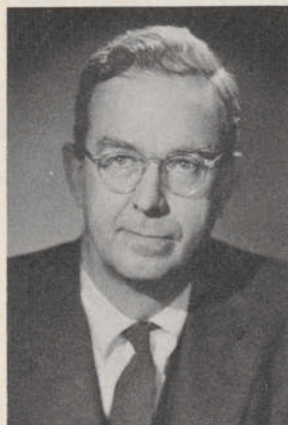
KENNETH C. SEARS, Professor of Law Emeritus. A.B. 1913, University of Missouri; J.D. 1915, University of Chicago. Office of Attorney General of Missouri, 1913–17. Practiced in Kansas City, Missouri, 1917–19. Assistant professor, associate professor, and professor of law, University of Missouri School of Law, 1919–25; visiting professor, summer sessions, Columbia University, 1923 and 1925; Summer Quarter (second half), University of Chicago, 1924; summer session, University of Wisconsin, 1926; Yale Law School, 1925–26; summer quarter, Stanford University, 1929, 1948; summer quarter (first half), University of Colorado, 1939. Member, American Bar Association. Author, *Cases on Administration Law* (1938); co-author, *May on Crimes* (4th ed.); *Revised Cities and Villages Act [Illinois]* (1941).

MALCOLM P. SHARP, Professor of Law. B.A. 1918, Amherst College; M.A. 1920, University of Wisconsin; LL.B. 1923, S.J.D. 1927, Harvard Law School. Admitted to practice in New York, 1924. Practiced with Lowenthal, Szold and Perkins, 1924–25; Root, Clark, Howland and Ballantine, 1925. Assistant in economics, University of Wisconsin, 1919–20; assistant professor of law, University of Iowa, 1925–26; assistant professor of law, 1927–30, and associate professor of law, University of Wisconsin, 1930–33; visiting associate professor of law, 1933–35, and associate professor of law, University of Chicago, 1935–40. Author, *Contracts—Cases and Materials* (Prentice-Hall, 1953) (with Kessler).



ROSCOE T. STEFFEN, John P. Wilson Professor of Law. A.B. 1916, College of Idaho; LL.B. 1920 (*cum laude*), Yale University; LL.D. 1956, College of Idaho. Practiced with firm of Shearman and Sterling, New York City, 1922–25. Assistant professor of law, 1925–28, associate professor of law, 1928–30, and professor of law, Yale Law School, 1930–49; visiting professor of law, University of North Carolina, summers, 1931 and 1933, Cornell University, summer, 1932, University of Chicago, summer, 1934, and University of Indiana, summers, 1936 and 1938. Judge, Hamden Town Court, 1933–39. Special assistant to the Attorney General, Department of Justice, 1939–49. Member, New York and United States Supreme Court Bars and Chicago Bar Association. Author, *Cases on Agency* (2d ed., 1952); *Cases on Commercial and Investment Paper* (2d ed.; Foundation Press, 1954); *Cases and Materials on Elements of Law* (1950) (with Edward H. Levi).

FRED L. STRODTBECK, Associate Professor of Sociology. B.A. 1940, Miami University; M.A. 1942, Indiana University; Ph.D. 1950, Harvard University. Teaching assistant, Department of Sociology, Indiana University, 1940-42; part-time instructor, Department of Sociology and Anthropology, University of California at Los Angeles; research assistant in Small-Group Experimentation, Harvard University, 1947-50; assistant professor of sociology, Yale University, 1950-53. Captain, U.S. Army (a three-year administrative research assignment). Principal administrative analyst, Los Angeles City School System, 1945-47.



SHELDON TEFFT, Professor of Law. A.B. 1922, LL.B. 1924, University of Nebraska; B.A. in Jurisprudence 1926, B.C.L. 1927, M.A. 1930, Oxford University. Admitted to practice in Nebraska, 1924. Assistant professor of law, University of Nebraska, 1927-29; associate professor of law, University of Chicago, 1929-40; visiting professor of law, Stanford University, 1935, and University of Oklahoma, 1948. Acting dean of The Law School, 1943-45. Co-author, with Aigler and Smith, of Aigler, *Bigelow and Powell's Cases and Materials on Property* (2d ed.; West, 1951).

HANS ZEISEL, Professor of Law and Sociology. Dr.Jur. and Dr. Rer.Pol., University of Vienna. Lecturer, Department of Sociology, Columbia University; lecturer, New School for Social Research; instructor in economics and statistics, Rutgers University. Director of research development, McCann-Erickson, Inc.; director of research, Tea Council. Author, *Say it with Figures* (Harper & Bros., 1947); *Marienthal: A Sociological Study of Unemployment* (Leipzig: Hirzel, 1932) (with Marie Jahoda).

