

SPECTRUM

Volume 7, Number 13

Fairfield, Connecticut

January 31, 1991

SHU responds to Middle East War

Campus Ministry can help pacifists avoid future draft

By Shellie Dagoo
News Reporter

As the Persian Gulf War rages Campus ministry is gearing up to help conscientious objectors register their beliefs in case of a national draft.

"This is the time to be thinking about it," said Campus Minister Anne-Louise Nadeau. "A student may have as little as 10 days between when he is drafted and when he has to report for duties. That's not enough time to document conscientious objector beliefs."

"The trouble is that most 18-year-olds and 19-year-olds don't have focused ideas about what they believe," Nadeau said. "It's hard to ask someone that age to decide life and death questions when they can't make up their minds what major they want."

"Maturity usually comes in the late 30s when a person has had enough experience to reflect on their life," Nadeau said.

So far no one has inquired about the procedure, Nadeau said. She foresees only a few students opting for the conscientious objector status.

Changes in draft laws mean that a number of exemptions no longer apply.

Under current draft law college students would receive only temporary deferments, according

to College Press Service. Students drafted in the middle of a semester would be able to delay military service only until the end of the academic term. Seniors could defer leaving until after graduation.

If a person had close family members who died in a war or was the only surviving member of a family that died in war they were exempt, according to Robert A. Seeley author of Handbook for Conscientious Objectors. But this law no longer applies Nadeau said.

"All of this (current laws) can be amended if the draft is re-instituted by Congress," Nadeau said.

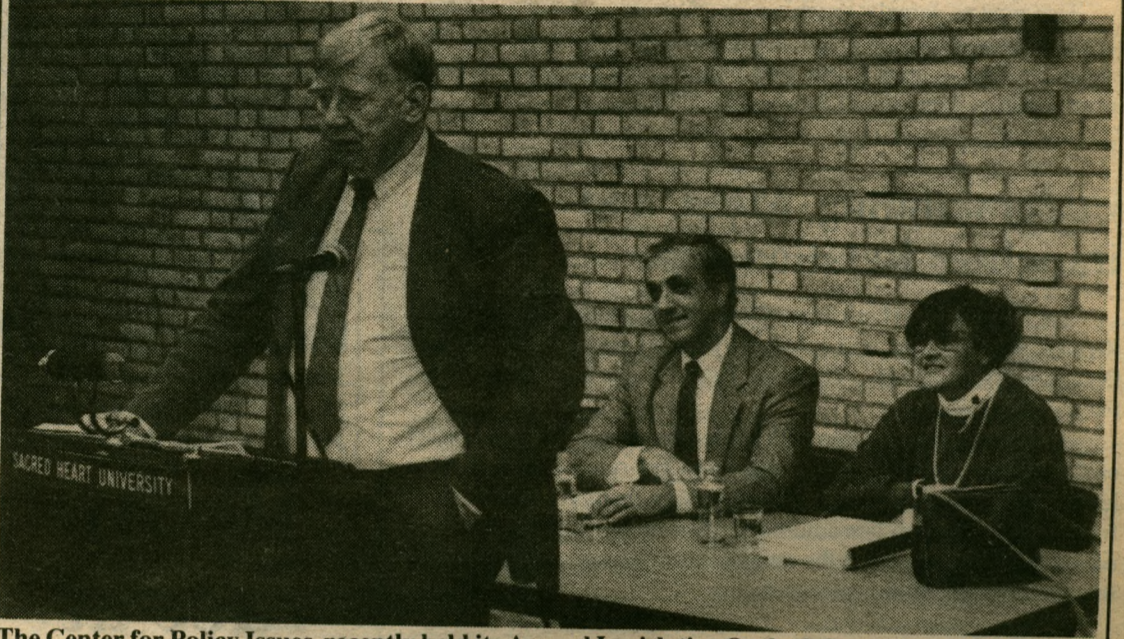
One person who attempted to convince me he was a conscientious objector mentioned that he had been arrested several times for beating up people, Nadeau said.

"Where is the consistency between beliefs and actions?" Nadeau said. "Any conversion is not on one layer, it permeates all layers of life."

Various types of conscientious objectors exist said Rosemary Gorman, an adjunct professor in the religious studies department. Some people will not fight in any war and are dubbed absolute pacifists or conscientious objectors. Those who would fight a just war declared by Congress or if their

See *Conscientious*, pg. 3

Forum on funds



The Center for Policy Issues recently held its Annual Legislative Outlook forum in which the topic of whether Connecticut is appropriately allocating its expenses was discussed. On hand, from left, were Thomas Sullivan (D - Guilford), President of SHU, Dr. Anthony Cernera (as moderator) and Judy Friedman (R - Westport).

Senior Challenge launched

By Joan Hardy

On Thursday, Jan. 24, class agents met in the Community Room of the Campus Center to initiate the third annual Sacred Heart University Challenge Program.

The program requests seniors to pledge \$10 donation to the University for the first year, \$20 the second year, and so on for five years. The total donation will be \$150 per student.

According to Alice Chaves, co-coordinator, "The Senior Challenge is a class giving program established to provide increased financial resources and improved academic opportunities for future students."

Co-coordinator, Catherine

Pinckney stated, "As alumni, it will be our responsibility to help SHU grow and improve so that students who follow us can receive the best education possible."

"I cannot overemphasize the urgency for pledges," Darlene Mendler, co-coordinator commented. "It is important to maintain a positive reputation of SHU. Every good thing that happens to the University will enhance the value of the degree we hold."

The pledge drive will continue from Feb. 4 through Feb. 18. This year's goal is for 150 seniors to make the promise to help raise over \$22,000 for the University over the next five years.

This year's class agents are the co-coordinators Alice Chaves, Catherine Pinckney, and Darlene Mendler, plus John Bilski, Karen

Egri, Kevin Farrell, Angeline Ioannou, Robert Kovacs, Andrew Madison, Mike Maitem, Linda Manna, Sharon Miller, Tracey O'Connor, Albert Paolozzi, George Reyes-Gavilan, Laurie Spago, Ron Teixeira, Ligia Vicente, and Scott Wooten. Besides manning a booth outside the cafeteria, the agents will be making every effort to contact all seniors.

Director of Alumni Laurie Bellico stated, "We are anticipating a most successful pledge drive. I know the class agents are working hard, and I hope that the seniors' will be responsive to the challenge."

"Right now we are also planning the '91 Days Till Graduation Party'" to celebrate the finale of the pledge drive," says Bellico.

Student organizations work phones to play the horses

By Alice Chaves
Contributing Editor

Beginning Feb. 4, Sacred Heart University students will be off to the races. The horse race that is. The First Annual SHU Derby Race, a student fundraising activity, is a competition among student clubs and organizations to solicit pledges from alumni during the Annual Phonathon held till March 14.

The purpose of the phonathon is to raise money for the university's operating cost budget, campus renovations, library resources, financial aid assistance and scholarships. According to Laurie Bellico, Director of Alumni Relations, "last year we met our goal and raised \$33,000 in pledges. This year we hope to reach our

goal of \$49,000 in pledges."

Students are being asked to participate in the phonathon and earn six dollars an hour personally or for their organizations. In order to enter the derby race, all participating members must be in good standing with the university and accumulate 30 hours of phonathon time before they qualify for the race. At that time each eligible organization will be given a horse to name and place in the race.

Once a horse has been given to the club or organization, the bonus point system begins. For every cash pledge that a member of an organization solicits, one point is given to that organization. For every \$100 pledged, five points is added and for every three hours worked, ten points is added to the total.

Prize money includes

\$1,000 to the organization who has accumulated the most points and wins the derby race. Five hundred dollars for the organization that places second and \$250 to the organization in third place.

The Student Ambassadors' Association, Italian Club, Presidential Gold Key, Beta Delta Phi, Sigma Tau Omega, Gamma Chi Zeta, Nu Epsilon Omega, the softball team and the Debate Society are some of the enthusiastic organizations already signed up for phonathon and the race.

Senior Kate Keegan of the Debate Society says, "it is a fantastic way for our organization to raise money for our traveling expenses."

"I plan to work hard to keep my sorority's horse in the

See *Derby*, pg. 2

SETS slates troop support

By Funda Alp
Editor in Chief

The newly formed Students Encouraging Troop Support (SETS) is sponsoring a "Tie a Yellow Ribbon Day" on Feb. 7 outside the cafeteria.

SETS is a temporary coalition formed to "peacefully and publicly display support for the brave men and women who are now serving in the Gulf War," says Kate Keegan, one of the founders of SETS.

Along with co-founders Alice Chaves and Paul Denhup, student clubs and organizations have joined in the campaign to send letters and sign a giant postcard. "We want students, faculty, staff and administrators to start writing a letter to one of the troops telling them what's happening here in the United States," says Denhup, "we will collect them on February 7. Anyone who

does writes a letter will receive a yellow or red, white and blue ribbon."

In addition, SETS will have a scroll in front of the cafeteria for people who wish to send a message to the troops. The letter and scroll will then be shipped to Saudi Arabia.

Says Keegan, "we encourage people to enclose newspaper and magazine clippings or cartoons within their letters - anything that they think might be of interest to someone so far from home."

Some of the student organizations participating in the event include: College Republicans, *Spectrum* Newspaper, Student Government, Beta Delta Phi, Nu Epsilon Omega and the Historical Simulation Society.

"All of us have different views on whether we support or oppose the war, but we all have

See *Tie*, pg. 2

NEWS BRIEFS

Award-winning writer to give poetry reading

Award-winning poet Sue Ellen Thompson will give a poetry reading at the Sacred Heart University library on Thursday, Feb. 21 at 3:30 p.m. with a social hour to follow, giving those in attendance an opportunity to talk with the guest poet.

The presentation, one in a series of poetry readings being held at the library, is co-sponsored by Sacred Heart, the Southern Connecticut Library Council, the Southwestern Connecticut Library Council and the Connecticut Commission on the Arts.

Her poetry, largely touching on subjects as love, marriage, family relationships and death, are in rhyme and in free verse. The poetry reading is open to the public at no charge. For more information call the SHU Library, 371-7700.

Understanding Mom and Daughter Relationships

The Sacred Heart University Center for Women presents Norma Kirwan, Psy.D., who will speak on "An Exploration of Mother/Daughter Relationship", Tuesday, Feb. 5 from 7 - 9 p.m. in the Faculty Lounge.

A women's relationship with her mother has a profound impact on her sense of herself as a woman and her role as mother. This lecture will explore the complexity of mother-daughter relationships from infancy through late adulthood, their reciprocal and changing nature over time, as well as the satisfactions and potential difficulties involved in each of the various stages.

Tuesday is Movie Nite

The Media Studies Department presents black films and filmmakers screening series, which began with the showing of *Buck and the Preacher* on Jan. 29.

The following are the six films that will be shown in 16 millimeter prints in celebration of Black History Month.

Tuesday, Feb. 12

THE EMPEROR JONES

Directed by Dudley Murphy, 1933

BLACK AND TAN

Directed by Dudley Murphy, 1929

Tuesday, Feb. 19

THE BLOOD OF JESUS

Directed by Spencer Williams, 1941

Tuesday, Feb. 26

NOTHING BUT A MAN

Directed by Michael Roemer, 1964

Tuesday, Mar. 5

SWEET SWEETBACK'S BAADASSSSS SONG

Directed by Melvin Van Peebles, 1971

All movies begin at 5:30 p.m.

Watch for a special screening of Spike Lee's *Do the Right Thing* on Thursday, April 4.

Love in the Air

In honor of Valentine's Day, love is on the air as WSHU presents a special edition of MOSAIC at 3 p.m. on Sunday, Feb. 10, focusing on love themes in music throughout the ages, drawn from the great love stories of opera and other love songs.

When you check the music listings for WSHU Classics listings in the WSHU Programme for February, take note that on Valentine's Day, WSHU classics will spotlight the theme *Romeo and Juliet*, including music from *West Side Story*.

WSHU be heard on 91.1 on the FM dial.

Take a "Journey"

On Thurs., Jan. 31st, James J. Mapes will present a Journey into the Imagination. Combining his expertise of hypnosis, his mastery of communication, and his effectiveness as a lecturer, Mapes leaves his audience feeling good about themselves.

Come to one of the most exciting nights of entertainment you will ever see, anywhere. Students will be invited out of the audience to take a thrilling two hour adventure into their own imaginations.

Mapes is the president and founder of *Quantum Leap Thinking* which specializes in providing students with the tools necessary to stimulate innovation, enhance creativity, and inspire productivity.

The event is free and sponsored by Student Government. It will take place in the SHU Theatre from 8:00pm - 10:00pm.

Ring in the new year



Jostens representative, Bob Simnick (right), offers information on rings, stones and sizes to Alpa Mahta, Ligia Vencente and James Demhan Ryan (from left). Mr. Simnick will be at SHU through Jan. 31, outside the cafeteria.

Photo by Michael Champagne

Derby race at SHU

Con't from pg. 1

lead down to the stretch," said Catherine Pinckney of Nu Epsilon Omega.

The SHU community is encouraged to follow the race by checking the racetrack that will be set up in the Hawley Lounge during the Phonathon.

Bellico and the Alumni Executive Committee conjured up the idea of the derby race. Says Bellico, "we wanted to involve the student body in the Annual Phonathon. This derby race makes it more exciting for everyone. Plus, it gives all the student organizations an excellent opportunity to raise money for their organization and the university."

Tie a yellow ribbon

Con't from pg. 1

one thing in common and that is we care about the troops and that there are people back home at a university in Fairfield, Connecticut who are thinking about them," says Chaves.

"We want everyone to show their support for the men and

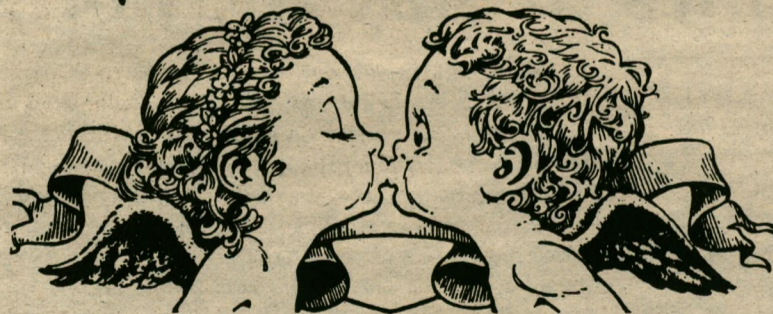
women stationed in the Persian Gulf and writing a letter is an excellent way to do this," added Keegan.

Any student or organization who is interested in joining SETS should contact either Alice Chaves or Kate Keegan.

Students Encouraging Troop Support

February 7th
11 a.m. - 12 p.m.
outside cafe

Anyone
can buy a
Hallmark card.



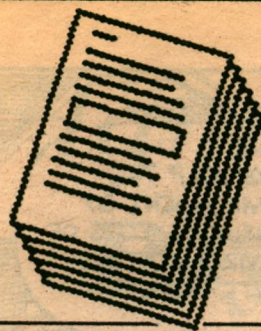
Write your original personal in the *Spectrum* today.

One personal \$2

Buy two personals \$3

Most original wins 2 free movie tickets

Deadline to submit a paid personal is Thursday, February 7, 1991



11 Tips for an effective resume

By Joann Mariani
Features Editor

You never get a second chance to make a first impression, especially when you're applying for a job. To a prospective employer, your resume is you until you walk into his office. A neat, well-presented resume is essential to your job search. If you already have a resume, the following tips will help you polish it up; if you don't, keep these ideas in mind as you write it.

1.) Keep it brief and concise. Eliminate unnecessary words and phrases. If you worked as a cashier at a clothing store, for example: rather than the cumbersome "I was responsible for taking care of the customers, ringing the cash register, and getting clothes on the rack", say "Customer service and assembling displays." Be as descriptive as possible in the smallest possible number of words.

2.) Have a clear, specific job objective skewed toward the company you're applying to. If you were applying to Stonybrook Elementary School for a teaching position, state your job objective as "Third grade instructor at a

rural primary school," rather than the vague "elementary school teacher."

3) Streamline your work experience; you don't have to put the month, day, minute, second of the beginning and ending of each job. The year will suffice.

4) Likewise, you don't have to mention very brief employment on your resume. You can leave out the three months you spent at Roy Rogers.

5) If you are just starting to look for a "real" job, you'll have a briefer history of employment. So use your college experiences. You may have done a research project for a marketing class, published

articles in the literary magazine, served on Student Government. Also, mention volunteer work. These things do matter to a prospective employer.

6) Use action-oriented verbs when describing your experience. Try not to overuse the worn-out "responsible for...". In the case of the marketing student above; his description might say "Designed and conducted research, tabulated the data, and presented the results." Be specific.

7) Mention specific skills that are relevant to the position you're applying for. If you are bilingual, mention your ability here. Today, proficiency in a computer lan-

guage is also a plus. Even if the program you use is not the same as the company's, it demonstrates that you have the intelligence and perseverance to learn one. Also, mention typing skills, use of office machinery, etc.

8) A section of your resume should involve your special aptitudes and qualifications. This is where you can sell yourself. What skills do you have, what experience have you had, that makes you better for the job than the next guy? If you're applying for a position at a day care center, your

Conscientious objectors need to clarify beliefs now

Con't from pg. 1

country was attacked, are categorized selective conscientious objectors. Some people are nuclear pacifists who do not object to conventional warfare, but refuse to use nuclear weapons.

The absolute pacifist role holds more weight in front of a draft board and is easier to prove, Nadeau said.

Any material such as a letter to the editor or a class essay can be

used to help document your beliefs, Gorman said.

"Some parents save everything. If a kid wrote a peace poem in third grade, even that can be used to establish where and when the notion of non-violence started," Nadeau said.

"The American public sees warfare as something that you can fight surgically," Gorman continued. "It's doubtful we're targeting civilians but there's still going to be collateral damage."

"There must be hundreds of Iraqi casualties," Gorman said.

"But it's hard to assess."

"We (the United States) could have waited for economic sanctions to take effect," Gorman said. "It would have been a safer course in regard to human life."

"Any decision to take human life must be weighed against the presumption that (civilian and military) life is sacred," Gorman continued. "I'm sure President Bush weighed the decision to go to war against the sacredness of human life and decided that this is his only way to correct an injustice."

Although the U.S. has succeeded in destroying Iraq's nuclear capabilities, there are more rational ways to limit the nuclear club, Gorman said. Leaders use nuclear power as a political tool to gain a voice in the international community.

Western countries should limit the export of chemical, biological and nuclear weapons to Third World countries, Gorman said.

Since the Second Vatican Council a Catholic can now receive official support for conscientious objector status, Gorman

said. Instead of praying only for American troops, mainstream churches are also praying for Iraqi civilians as well.

"We are a global family," Gorman said. "Many religious leaders are in favor of peace and letting economic sanctions do the job."

"But there's always a backlash against pacifists," Gorman said.

"A lot of campuses are divided over the issue. Big public changes could occur if the war drags on and the draft is re-instituted."

THE FUTURE

HAVE YOU DECIDED ON YOURS?

ARE YOU . . .

. . . an "A" or "B" student?

. . . still undecided on a career path?

. . . in search of a profession where an individual is limited only by his or her own desire to succeed?

NOW'S THE TIME . . .

. . . FOR YOU TO CONSIDER A CAREER AS A CERTIFIED PUBLIC ACCOUNTANT.

As a CPA, you can have it all -- financial reward, professional status and achievement, security, and a future filled with promise.

Even if you're not a business student, don't rule out a career as a CPA. CPAs draw regularly upon much more than familiarity with numbers. CPAs need the same skills anyone else does for success: communication skills . . . interpersonal skills . . . drive, enthusiasm, and creativity . . . skills you may already have or be developing in your other courses.

Call the school's accounting department today. You've got nothing to lose -- and a great future to gain.

This advertisement sponsored by The CSCPA Educational Trust Fund. For more information on the opportunities available to today's -- and tomorrow's -- Certified Public Accountants, see the accounting department chairperson or call the Connecticut Society of Certified Public Accountants today at 1-800-232-2232.



Nearer, my God, to Thee

The Catholic church, exercising its role in Catholic universities, continues to promote its out-of-date position in matters of the flesh.

According to Catholic doctrine, it is sinful to use birth control, even in marriage. But the use of certain forms of birth control have purposes beyond that implied by the name.

Condoms are used, both as a form of birth control and to prevent the spread of sexually transmitted diseases (STD's). Just because one is married doesn't mean they want to contract the same disease(s) their spouse may have.

Is it the Catholic church's position that spouses should accept their partners enough to also accept any disease they can pass on? Does this university also subscribe to that sentiment?

The students of SHU hail from a variety of religious backgrounds. Some of those backgrounds do not believe that contraception is a sin. Should not those students be fairly represented, made aware of risks to themselves and the best ways to realistically avoid those risks?

Some students (and faculty as well) in the SHU community who are married, could benefit from the unrestricted distribution of information about condoms, but a marriage certificate should not be a prerequisite to that information.

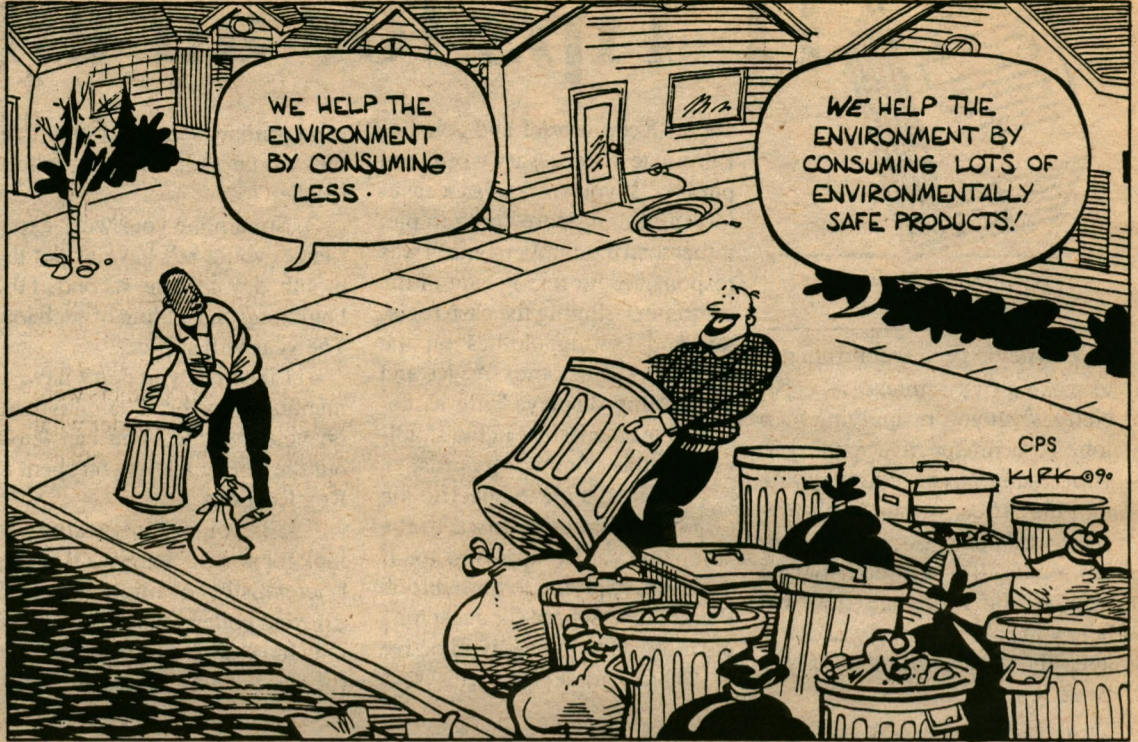
Not many years ago, an offer was made to this campus to install condom machines. At the time, the university had no dorms and the offer was declined. Sacred Heart has now embarked on an auspicious plan to erect on-campus dorms along with a long-term major renovation to the entire campus. There can be no doubt that along with on-campus dorms there will be an increase in on-campus sexuality. The university does students a great disservice to ignore that fact and follow an out-dated doctrine.

Should this university, or any other, stand in the way of reams of scientific evidence supporting the use of condoms to prevent the spread of STD's? Surely, abstinence is not a realistic option.

This is a private, independent university that subscribes to the Catholic tradition, yet accepts federal funding. The Catholic church can advise on their philosophy but should not be allowed to squelch the voice of public welfare.

EDITORIAL POLICY: The opinions expressed on the editorial page(s), whether in signed columns or letters to the editor, are solely those of the authors. Unsigned editorials appearing in the far left column of the first editorial page represent the majority opinion of *Spectrum* Editorial Board. Typed, double-spaced guest columns and letters to the editor are welcomed and encouraged. All are subject to editing for spelling, grammar, punctuation and clarity. Letters to the editor should not exceed 350 words and will be considered on a space available basis. All submissions are reviewed by the Editorial Board and final decisions are made by the Editor-in-Chief.

Spectrum is a student newspaper of Sacred Heart University. It is published every Thursday during the academic year. *Spectrum* office is located in the Academic Building, room S219. The phone number is (203) 371-7963. All mail is to be sent to Sacred Heart University c/o *Spectrum*, 5151 Park Ave., Fairfield, Connecticut 06432-1023. *Spectrum* believes all advertising to be correct but cannot guarantee its accuracy. Deadline is (9) days prior to publication. For information call (203) 371-7966.



By Larry Mastroni

Not quite reality

Major league baseball also engaged in a bidding war for Bigfoot the athlete. Naturally, the winner was George Steinbrenner. On opening day, Bigfoot hit a Roger Clemens fastball out of the park. The home run infuriated Pete Rose, who had five thousand dollars that said Bigfoot would strike out.

Bigfoot's athletic ability earned him success as a health and fitness expert. He capitalized on this success by writing a number of health and diet books. Oddly, Bigfoot's theories about stress disputed current medical thought. Bigfoot stated that stress is beneficial, and that the stress he experienced from being chased by civilization for a few thousand years accounted for his longevity. Bigfoot's theories became so popular that a phone line was created containing his health advice.

Bigfoot's status as a health authority made him a star on the talk show circuit. However, Bigfoot encountered a problem on the Geraldo Show, when Geraldo called Bigfoot a phony. This remark angered Bigfoot, who was encouraged by lawyers and representatives from M.A.N

(Monsters Are Nice) to sue Geraldo for defamation of character and irreversible psychological damage.

The trial hit a standstill when the presiding judge insisted on finding a character witness who knew Bigfoot all his life. The judge's request troubled Bigfoot as he realized that he couldn't even remember the identity of his ancestors. Depressed, Bigfoot hired a team of specialists to investigate his heritage. After a two year inquiry involving scientists, historians, archaeologists, and anthropologists, the specialists concluded that Bigfoot descended from the same family line that produced Leona Helmsley.

All of this talk about family lines and ancestors made the writers of the tabloid papers come to a startling realization: There has never been any talk of a Mrs. Bigfoot.

Shortly after this realization, stories in the tabloids began portraying Bigfoot as either a homosexual, an over-bearing husband who refuses to let his wife out of the house, or America's most eligible bachelor. Consult this week's papers to find out his latest status.

It's amazing how American society could turn an unknown personality into a hero overnight. After the scientific confirmation of Bigfoot a few years ago, Bigfoot's status has risen from pre-historic beast to one of America's most popular celebrities. The following article is a brief survey of Bigfoot's accomplishments.

Bigfoot was an instant success in the advertising world. Notable Bigfoot endorsements include "The Tall and Big Man's Shop" and basketball shoes.

As Bigfoot's status grew, a bidding war developed between various motion picture studios for the exclusive rights of Bigfoot the actor. As a result, Bigfoot is scheduled to portray Sylvester Stallone's nemesis in the next Rocky film.

Funda Alp..... EDITOR-IN-CHIEF

Michael Champagne.....Associate Editor	Alice Chaves.....Contributing Editor
Dean Connors.....News Editor	Eric Sundman.....Advertising Manager
Michael Champagne.....Photo Editor	Chris Nicholson.....Copy Editor
Joanne Mariani.....Features Editor	Michael Champagne.....Columnist
Chris Conway.....Arts Editor	The Madman.....Columnist
Rick Ferris.....Sports Editor	Ralph Corrigan.....Advisor
Lori Bogue.....Asst. Sports Editor	David Ibarra.....Typesetting

Staff

Catherine Gingerella, Amy Madison, Michael Shea, Andy Madison, Paul Molnar, Jennifer Barbin, Koleen Kaffan, Kate Keegan, Shellie Dago.

In my opinion ...

Show support for the troops

By Rick Ferris
Sports Editor

As everyone is now aware (I hope), there is a war going on in the Persian Gulf. I'm not going to start ranting and raving how this war is necessary to get a vicious dictator out of Kuwait, or how bad war is. Rather, I'm going to talk about a group of people, who for right or wrong, are putting their lives on the line to get Saddam Hussein out of Kuwait: our U.S. troops.

While technically this is not a war between the U.S. and Iraq, out of the 600,000 plus allied troops, 470,000 of those are American sons and daughters who

are risking their lives.

The wonderful thing about the United States is that under the First Amendment of the United States Constitution, U.S. citizens are granted the right to freedom of speech, press, religion, and the right to petition and assemble.

A small minority of American citizens are now capitalizing on their right to assemble and are now engaging in sometimes peaceful demonstrations against the war in the Middle East.

Some people have even taken to burning the American flag (I suppose no one could find an Iraqi flag to burn). I'm not saying that the right to assemble should be abolished, but in times of war, I think it's important to show a

united front and not only support the President and Congress, but stand behind the U.S. men and women in the Middle East.

I can only imagine being in Saudi Arabia and hearing about citizens back home burning the flag that I and 470,000 others were there fighting for. I wonder what these protestors think they are accomplishing by protesting. Get-

ting President Bush to withdraw our troops from Saudi Arabia? There is no way that would ever happen, so the only people these people affect are the troops.

So even though the "peace" demonstrators say they are opposing Bush and supporting the troops by burning the flag, they are actually opposing the troops.

These demonstrators like

comparing this war to Vietnam, so let's do that for a minute. Remember how scarred the troops came back from Vietnam, both physically and mentally? That mental scarring came in good part due to the lack of support the American public showed them, so let's not make that same mistake now. Stand up and support our troops!



Shaping the world

To the Editor,

War is a terrible thing. However it is war that sometimes shapes and impacts society's future agenda. The war in the Persian Gulf is an event that will shape the world.

Never before has the U.N. asserted so much power in forming a international coalition, trying to find peace, and reassuring the people who lost their nation that they will get it back. If successful the war would put a rubber seal on the order that aggression will not be allowed and that a new post cold war era has started.

In a military conflict of such grandiose proportions as this affects just about everyone. Some Americans have family and or friends in the region. Others share the hopes and pain of a nation at war. If there is one certainty in this war it is that it impacts all Americans, liberals and conservatives, young and old. And the impact will last far into the future.

Yes, war is cruel, mean and nasty. And there are many uncertainties about war in the Gulf. One sure thing is that this war will impact the U.S. and world society for years to come. This is the first crisis of a new era and the way the world community handles it will determine the shape of the world for years to come.

Michael Savino
Freshman accounting major

Letters

All drugs are dangerous

To the Editor,

In response to Emily Mateka's letter to the editor in the January 17, 1991 Spectrum, I would like to say she is absolutely correct in her message that alcohol, nicotine, and many over-the-counter medications are also drugs. I also strongly agree with her contention that the "Just Say No." campaign is largely unrealistic. I must, however, take exception to much of the rest of her letter.

Ms. Mateka's conviction that LSD and Marijuana do not cause as much damage as "the legal" drugs is absolutely incorrect. Although it is true that some drugs are physically addictive, some are psychologically addictive, and some are both physically and psychologically addictive, one cannot base the damage a drug can do on the kind of addiction it may cause.

I would like to cite some facts regarding various substances,

which may be of interest to Ms. Mateka, and to your readers:

-Alcohol is the number one cause of death of persons between the ages of 18 and 24.

-Alcohol leads to more problems for individuals, families and society as a whole than any other drug.

-Smoking five marijuana joints a week has the same effect on the respiratory system as smoking 112 cigarettes (5 1/2 packs).

-Marijuana is a psychologically addictive drug; it is still unclear as to whether it is physically addictive.

-Marijuana smoke contains 50% more cancer-causing materials than cigarette smoke.

-Reaction time for motor skills (driving, writing, etc.) is reduced by 42% after smoking one joint. It is reduced 63% after smoking two joints.

-One joint remains in your system (and can be detected in blood or

urine samples) for 3-4 weeks. THC accumulates in the fatty lining of the cells and is released into the bloodstream for many days.

-Marijuana reduces the ability to retain, coordinate and serially index immediate memories and perceptions.

-even minuscule amounts of cocaine can constrict the arteries and reduce the flow of blood to the heart.

-Crack cocaine may be psychologically addicting after the second or third use. It is the most highly addictive drug in use today.

-Drug use costs employers as much as \$102 billion a year (\$102,000,000,000) in lost production, medical/health insurance costs, motor vehicle accidents, fire loss and crime.

-Drug using employees are three times more likely to be late for work; they leave early 2.2 times more frequently, use 3 times as many sick benefits; are absent 2.5 times more; and are 5 times more likely to file a worker's compensation claim.

-Consumption of alcohol and other drugs- even in minimal amounts- increases accidents at work and decreases performance at school.. 40-45% of all industrial accidents are linked to substance abuse.

Any Sacred Heart Community member who would like to speak to me about this issue is welcome to call me at 365-7581.

Sincerely,
Chyai Mulberg
Drug Prevention Coordinator

Drop us a line. We know you've got the time...

The Student Voice

Should sex/health-related literature be "cleared" by Campus Ministry before distribution to students?



Cheryl Pierne
Junior
Accounting



John Oldham
Senior
History/ Poli Sci



Greg Fodor
Sophomore
Undecided



Will Adams
Sophomore
Sports Med.



Pilar Chira
Freshman
Undecided

"Campus Ministry should not have any control over the Health Services Dept. Although this is a Catholic university, students are represented by other religions. Sex among college students is very prominent and sex education is desperately needed."

"No, I don't think it has anything to do with Campus Ministry. It has to do with health, not morality."

"I think Health Services should be allowed to do whatever they want. They should be able to pass on whatever they want to people."

"In general, health literature should not be censored, even in issues involving birth control because morals are subjective. It's up to the individual."

"I think that even though it's a Catholic school, they (Health Services) should be able to hand out pamphlets and materials on sex education regardless of the fact that it's a Catholic University."



And the su

1- Do you know who your Students Government Representatives are?

Yes 36% No 64%

2- Do you know who the President of Student Government is?

Yes 69% No 31%

3- Do you know who the Vice-President of Student Government is?

Yes 59% No 41%

4- Do you know where \$45 activity fee goes?

Yes 26% No 74%

5- Do you think \$45 per semester is a fair price?

Yes 38% No 54% Unsure 8%

6- What year are you in at SHU?

Freshman 20% Sophomore 23% Junior 27% Senior 30%

7- Are you a resident on campus?

Resident 9% Commuter 91%

8- Do you attend any student activities?

Yes 60% No 40%

9- Are you a member of any student clubs or organization?

Yes 48% No 52%

10- Number of times you've met with your academic advisor this year 1990?

Average: 2 times
35 students responded "0".

11- Do you read the Spectrum newspaper each week?

Yes 87% No 13%

12- Are you aware that we have a student radio station at Sacred Heart, WWPT?

Yes 95% No 5%

13- Do you listen to them in the cafe?

Yes 73% No 27%

On the radio?

Yes 14% No 86%

14- Would you rather we play WWPT of KC 101 in the cafe?

WWPT 33% KC 101 34% Other stations 21% Nothing 12%

15- Do you attend SHU Basketball games?

Yes 32% No 68%

16- Are you aware that students receive free admission to all home games?

Yes 57% No 43%

17- Who is the best professor at SHU?

The following professors received the most votes:

- | | |
|---------------|-----------|
| Brooks | Kinik |
| Calabrese | Labet |
| Colvin | Lilley |
| Corrigan, R. | Mammone |
| Corrigan, T. | Miller |
| Curran | Pannese |
| deGraffenreid | Reid |
| Donahue | Rose |
| Frangul | Schofield |
| Frydman | Siff |
| Gottlieb | Sladek |
| Gzowski | Torreira |
| Haffner | Tufano |
| Hicks | Weinstein |
| Kelly | |

18- What was the class you loved the most?

The most popular classes listed by the students were:

- PS 101
- CA 021
- AC 101
- EN 011
- PH 101

FN 215
Intro to American Gov't
Business Politics

19- What was the class you hated the most?

The most disliked classes listed by the students were:

- PS 101
- CA 021
- RS 101
- PH 101
- MT 110
- EN 012
- Calculus
- Civilizations

20- Do you know who the President of SHU is?

Yes 82% No 18%

21- Do you participate in intramurals at SHU?

Yes 14% No 86%

22- Do you think that SHU has a good student life?

Yes 56% No 44%

23- How many student events have you attended this year?

Average: 1.5 events
76 students responded "0".

24- Who is SHU's best administrator?

The following administrators received the most votes:

- Beluk
- Bohn
- Bozzone
- Cernera
- Clinkscales
- Goodson
- Kelly
- Krell
- Savino
- Zahomacky

25- What Student Services Office have you used this year?

Drug Prevention Center	3%	Security Office	60%
Counseling Center	12%	Activities Office	60%
Career Services	37%	Dean of Students	30%
Women's Center	3%	Housing	6%
Campus Ministry	8%	Athletics	20%

74 students responded "none"

We inadvertently left Health Services off this survey. We apologize for this omission.

26- Are you in favor of dormitories at SHU?

Yes 85% No 15%

27- Would you be interested in living in dorms?

Yes 37% No 63%

28- What is your favorite student event?

The most often listed events were:

- Back-to-Class Party
- Last Day of Classes Party
- Semi-Formals
- SpringFest

29- What is the best food item in the SHU cafe?

The favorite items are:

- French Fries
- Bagels
- Yogurt
- Cheeseburgers
- Salad Bar
- Grilled Cheese
- SHU Muffin
- Chicken Patty
- Soup

30- Do you think SHU's administration is doing a good job?

Yes 58% No 28% Don't know 14%

31- If you are not already involved in activities, are

In an effort to better serve the Student Government president and the entire full-time student body in 1990, over 1300 surveys were mailed to your homes along with a postage stamp. Of the surveys mailed, only 263 surveys were returned. You expressed your opinions, and we are grateful for your response.

The results of the survey show that Reyes-Gavilan, Student Government President and were re-elected in 1991.

you interested in doing so
Yes 56% No 24% No resp

32- Do you think SHU is a good value for the money?
Yes 39% No 61%

33- Are the student government representatives doing a good job?
Yes 36% No 55% Don't know 9%

34- How would you rate the Student Government?
excellent 4% good 56% fair 30% poor 10%

35- How would you rate the cafeteria?
excellent 9% good 52% fair 30% poor 9%

36- How would you rate the student events?
excellent 9% good 49% fair 30% poor 12%

37- How would you rate the Student Government's activities?
excellent 19% good 61% fair 10% poor 10%

38- How would you rate the Student Government's financial aid?
excellent 7% good 54% fair 30% poor 9%

39- How would you rate the Student Government's registration?
excellent 7% good 44% fair 30% poor 19%

40- How would you rate the Registrar's Office?
excellent 8% good 38% fair 30% poor 24%

41- How would you rate the Financial Aid Office?
excellent 14% good 38% fair 30% poor 18%

42- How would you rate the library?
excellent 14% good 50% fair 30% poor 6%

43- How would you rate the Student Government's Activities Office?
excellent 17% good 59% fair 10% poor 14%

44- How would you rate the Student Government's events?
excellent 11% good 60% fair 30% poor 19%

45- What do you think about the Sororities?
The majority of responses indicated a strong sense of negativism toward the Fraternity and Sorority system. Some representative responses were: "Should be abolished. They are against others who are not involved in activities." "I think that they form too much of an activities focus too much on the

Survey says...

we the students of SHU presented a survey to the body. On November 15, were sent to students' large paid return envelope. out, asking students to comments, and concerns returned.

ere compiled by George at Government Vice- eased on January 22,

se 20%

tuition is fair?

ng their money's worth?

ow 9%

the performance of Student

30% poor 10%

the food service in the

30% poor 9%

the advertising of student

32% poor 10%

the Spectrum newspaper?

ir 16% poor 4%

the Prologue Yearbook?

30% poor 9%

WWPT student radio sta-

34% poor 15%

the performance of the

30% poor 24%

the performance of the

r 25% poor 23%

the quality of the SHU

r 19% poor 17%

the performance of the

r 18% poor 6%

the quality of our student

r 24% poor 5%

of SHU's Fraternities and

ated a feeling of ambivalence or and Sororities.

a bunch of snobs who discriminate in their groups."

of a clique, and that many of their members of their organizations."

"A lot of people in them won't associate with anyone that's not."
 "They tend to keep to themselves too much; very cliqueish."
 "They are worthless to some, very important to others."
 "Segregate and form cliques."
 "Interested in joining, but heard a large devotion of time is needed."
 "I don't like them because they act like elite clubs which you must pass a test to get into."
 "Do a lot for the school and community and are important to SHU."
 "They are postive in their goals (Appalachia, etc.)"
 "Good way to get involved on campus."
 "The fraternities and sororities seem to be fun to join and meet people."
 "They are great; glad to see people involved."

46-What would you like to see changed at SHU?

The most common responses were:

- Lower tuition
- Increased student involvement and morals
- Parking
- The course offerings

Some sample responses:

"Tuition is too high, there are few courses offered, student life is inadequate, the library is poor."
 "I would like to see the restrooms cleaned and kept up."
 "Classroom appearance and comfortable desks."
 "More classes offered during the day."
 "Bring back the crucifixes in the classrooms."
 "More activities held on weekdays because many people work on weekends and it's impossible to attend."
 "I'd like to get an administration that is concerned with present day SHU, and not with SHU 2001. I feel like a big dollar sign to Dr. Cerna."
 "More graduate programs in various disciplines."
 "Need a smoking and drinking section in the library."
 "The workers in the cafe sometimes handle food and money at the same time."
 "More things done for black students."
 "The music played on WWPT."
 "More minorities integrated into the SHU student body."

47-What activities would you like to see here?

The most common responses were:

- More dances
 - More parties
 - More trips
 - More speakers
 - More comedians
- Some sample responses were:
- "More casual dances and mixers."
 - "A concert of some sort."
 - "More trips off campus."
 - "Homecoming Weekend with parents."
 - "More day activities."
 - "Fitness classes."
 - "A golf team."
 - "A science club concerning social issues about ecology..."
 - "Speakers from the community."
 - "More plays."
 - "Babysitting services for mothers during the day."
 - "A Drama Club."
 - "Band and marching units."

48-What do you think is the biggest problem at SHU?

The most common responses were:

- Tuition
 - Lack of student involvement and morale
 - Lack of choices in the course offerings
 - Cliques in the student body
- Some sample responses:
- "Inequality of students."
 - "Lack of choices in the course offerings as far as time schedules and classes that are offered."
 - "Students aren't politically aware."
 - "The cliques. I am sick and tired of sitting in the cafe all by myself when everyone seems to know everyone else and I don't"
 - "There should be a better representation of minorities on campus."
 - "Ostracization. If you don't know the right people, you are totally ignored."
 - "Students are getting shoved around in all ways as possible while the administration tries to make SHU look like such a good place to incoming freshmen."

"Need recreation rooms especially with people living in dorms. There needs to be something to do on campus when there is no class."
 "The smoking regulations are not enforced."
 "Lack of tutors."
 "Some of the adjunct professors are not qualified to teach."
 "Cheating by students on exams."
 "Alcohol and drugs. Groups that use them can't have fun without them."

49-What is your opinion of the SHU bookstore?

The vast majority of responses were very positive. The most commonly heard negative reports were prices of books, long lines at buying time, return policy, and the size of the bookstore.

Some sample responses:

"Should have longer hours so if the Taft residents need something they can get it."
 "The bookstore should sell newspapers."
 "I love Pat."
 "They are very helpful."
 "It runs very efficiently, but the lines are sometimes long."
 "It's improved this year to meet the needs of the residential students, and that's good to see them care."
 "I am glad they have increased SHU items this year."
 "It is well run, clean, and quite efficient."

50-What is it that SHU doesn't have, but should have?

The most common responses were:

- On campus dorms
 - Better security
 - Better parking situation
 - Better course offerings
 - A recreation complex
- Some sample responses:
- "A working copy machine in the main building."
 - "More books in the library."
 - "An ROTC program."
 - "A student union."
 - "A Portuguese Club."
 - "A Tennis Team."
 - "Recycling bins around campus."
 - "A choir."
 - "Many more activities."
 - "A heart."
 - "More golfing activities."
 - "An American Flag in the Cafe."
 - "A better college atmosphere."

51-What issue(s) do you think Student Government should be addressing?

The most common responses were:

- Getting more student involved
 - Tuition increases/costs
 - Recycling programs
 - Alcohol and drug abuse
 - Course offerings
 - Racism
- Some sample responses:
- "How to get more students involved in activities."
 - "Have student government reps work harder."
 - "Campus Housing."
 - "Mailings to students to keep them informed on what's going on."
 - "Urge higher admissions standards."
 - "Persian Gulf Crisis."
 - "Financial Aid."
 - "Focus on the shy, withdrawn students."
 - "Publish what the activity fee is used for."
 - "Cheating, it's widespread on campus."
 - "Stress amongst college students."
 - "Course offering."
 - "There is racism on this campus, and S.G. should address the problem of how to bring all students together."
 - "Equal attention should be paid to all students, not just the ones who hang around Tom Kelly."
 - "The decline of the Fraternities and Sororities."

52-Please list any additional comments about SHU you would like Student Government to be aware of.

The majority of responses were a repetition of things stated earlier. Again, the most common responses were things like the high cost of tuition, keeping the bathrooms clean and stocked, the copy machine in the main hallway constantly being out of order, and the staff of the University in some offices being rude to students.

Danny Elfman: Having scores of fun

By Chris Conway
A&E Editor

A list of the important people involved with the making of a film might include the actors, the writers, the directors, and the producer. Presently, there is one man in Hollywood who intends to add at least one more position to this important list. The role is that of the composer and the man, Danny Elfman.

The 37-year-old Elfman has already established himself as a great film composer along the lines of Bernard Herrmann ("Psycho" and "The Birds") and John Williams ("Raiders of the Lost Ark"). Much like Herrmann who worked extensively with Alfred Hitchcock, Elfman too is closely related with Director Tim Burton. To date, Burton's only four films "Pee Wee's Big Adventure," "Beetlejuice," "Batman," and "Edward Scissorhands" have all been scored by Elfman.

"A lot of composers just turn in the score," says Burton. "Danny really works it out with you and lets you be a part of it."

Commenting on his "Beetlejuice" score, Elfman had this to say: "This, my second film for Tim Burton, is still the most pure fun I've had writing a score. He was a chance to loosen up and stretch out musically to all the great, wild images that time conjured up. It was like a musical roller coaster."

At last count, Elfman had scored fourteen films which include "Dick Tracy," "Back to School,"

and "Darkman." He has also done a small amount of work in televi-

Simpsons" which earned him an Emmy nomination.

Elfman's scores have proved to be very energetic and serve a useful purpose in the effect the particular film has on the viewer. His "Batman" score compliments the look of the film in setting the tone for the dark and mysterious story. The film would be very different without the Elman score.

Before his career as a film composer took off, Elfman was known to the music world as the outra-

geous lead singer and songwriter of the punk band Oingo Boingo. Despite being extremely busy these days, Elfman still finds time to work with the band.

"Music From a Darkened Theatre," a compilation album of Elfman's work in television and film, has just been released by MCA. It highlights small parts of all his scores to date.

As far as his future career is concerned, Elfman hopes to move away from comedy and fantasy films to work with more serious films.

"I'd kill to work with Kubrick, Coppola and Scorsese" Elfman says. "And I'd almost kill, I'd injure horribly, I would maim to work with Jonathan Demme, David Cronenberg, and David Lynch."

But for the time being, Danny Elfman hopes to constantly fuel his creative thrust.

"A lot of composers just turn in the score...Danny really works it out with you and lets you be a part of it."



Tragedy strikes Def Leppard again

By Paul Molnar
A&E Writer

Steve Clark

Throughout the years of their career the members of Def Leppard have had a taste of the good times and the bad times. On January 7, 1991 the band mourned the loss of their guitarist/co-founder Steve Clark, who died in his sleep at his home in London, England.

The band was on leave from recording sessions for their upcoming album while Clark was seeking help for an ongoing problem with alcohol. His death will have an enormous impact on the band who have made no future plans as of yet.

Def Leppard, a band out of Birmingham, England, burst onto the music scene in late 1980 with their debut "On Through the Night". The original lineup included Clark and Pete Willis on guitar, Rick Savage on bass, lead vocalist Joe Elliot, and Rick Allen on drums. They followed this up with "High-n-Dry", which also brought upon the departure of Willis. Then in 1983, the addition of replacement guitarist Phil Collen helped to achieve success with the blockbuster "Pyromania" album. This album raced to the top of the charts with such hits as "Photograph"



world tour as a headlining act.

The band took a break after the tour then started to work on their most recent album which they have been laboring on for the past year. The upcoming release was set to hit the record stores in the middle of this year, but Clark's sudden death has left the band's future questionable.

Clark will be remembered as one of Def Leppard's shining stars, who helped write most of their hit singles. He was truly the driving force behind one of the 80's most popular rock bands. It seems that tragedy takes the life of another rock-n-roll star and unfortunately Def Leppard's music will never be the same. Steve will be missed by his fans all over the world.

(1960-1991)

and "Rock of Ages".

It seemed that things were going great for the band, but before the recording of their next album was complete they were sidetracked. Drummer Rick Allen lost his arm in an automobile accident on New Years Eve, 1984. This had prolonged the album's release for nearly two years.

After months of rehabilitation and musical reorganization the band re-recorded most of the tracks for the 1987 release "Hysteria". The sound of Allen's new computerized drum kit and months of rewriting paid off. "Hysteria" established success with more than 8 million copies sold to date and was the foundation for their first

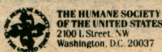


"SURE, I USE PRODUCTS THAT HELP ME LOOK MY BEST. THE REAL BEAUTY IS THAT THEY'RE NOT ANIMAL TESTED."



Everyone can agree with actress Ana Alicia — it's inhumane to test personal care products on animals. Now there's an easy way for you to identify which products are not. Watch for The Beautiful Choice™ symbol from The Humane Society of the United States.

Society of the United States starting in October and make every choice a beautiful one. Look for displays with this seal wherever you buy your personal care products. Or write The Humane Society of the United States for more information on this program.



1-800-372-0800
(For membership inquiries and "Beautiful Choice" campaign information)

"Hamlet": Zeffirelli's Psychological Interpretation

By Catherine Gingerella
A&E Writer

The plays of Shakespeare have long been made into film, and most recently one of these film versions has been released: the Franco Zeffirelli version of "Hamlet" starring Mel Gibson and Glenn Close.

Although "Hamlet" has been made into films in the past, Zeffirelli has attempted to do what the other filmmakers haven't: to show the dark and deeply psychological side of Hamlet as a human being who is faced with many problems including the murder of his father by his uncle.

Zeffirelli, who is most widely known for his film versions of "The Taming of the Shrew" (1966) and "Romeo and Juliet" (1968), first got the idea to do "Hamlet" in 1964 when he directed a touring stage production of the play. When asked about choosing "Hamlet" for his next filmmaking endeavor, Zeffirelli remarks, "The story of Hamlet is one of the most complete and psychologically complex stories ever conceived and written. Hamlet is an intensely modern person. He is torn by his desire to act and by his difficulty in deciding exactly what to do and when to do it."

Known for "breaking the rules" in his other Shakespeare films, Zeffirelli has now tried to show a fresh side of Hamlet. Commenting on his choice of Mel Gibson as Hamlet, Zeffirelli says, "His strength in front of the camera, combined with his past performances on stage in Shakespearean and other classical plays, made him a perfect choice to be the Hamlet of the 90's."

Gibson, who is best known for his work in "Lethal Weapon" and "The Road Warrior" has performed in stage productions of "Henry IV," "Oedipus," "Hamlet," and "Romeo and Juliet." Gibson notes, "Romeo was probably the role where I developed a grasp of Shakespeare language as the blueprint of something that could take motion and have a life

distinct from the one it has on the page."

Noting the psychological complexities of Hamlet, the famous Dane, Zeffirelli says, "Mel brings out those dual qualities in Hamlet—the vitality and humor before the storms he faces after his father's murder. He also has an ironic sense of humor that perfectly matches Hamlet's."

"What I am trying to do with "Hamlet" is to unleash the energy it contains and let it explode. I want to show that power to the audience" notes Zeffirelli.

Close, who portrays Queen Gertrude, explains that her character is complex and was a challenge for her to play. For Close, as she explains, "Gertrude is a woman who has been awakened for the first time in her life by a full, satisfying, sensual relationship, which she didn't have with her first husband."

Besides Gibson and Close in the film are Alan Bates (Claudius) and Paul Scofield (the Ghost of Hamlet's father). Commenting on his role as Claudius, Bates

notes, "Claudius' state of mind, like Hamlet's is quite disturbed. Claudius is almost schizophrenic.

Company. Much of the original text from the play that is cut for the film is replaced with visual im-

is overwhelmed by the beautiful cinematography. "Movies can tell so much in one shot that sometimes even Shakespeare's words become redundant" says Zeffirelli.

One of the problems Zeffirelli faced with making "Hamlet" was to condense the four-hour play into a two-hour film. As he explains, "My efforts were to keep the story clear without mutilating the original. We made some tough choices, and some of them may be controversial. But it is the eye of the camera that makes the difference."

What adds to the brilliance of the film is its exquisite sets and costumes. Despite the fact that acclaimed composer Ennio Morricone ("The Mission") scored "Hamlet," there is virtually little if any music in the film. The film has a very quiet and calm tone. Zeffirelli comments, "We wanted atmospheric, mysterious sounds. I didn't want to have really tuneful music." There is, however, a definite need for more music to add to the action and drama.

Zeffirelli's "Hamlet," despite being dry at times, is an interesting film to see. Gibson, although a bit too old for the part, portrays an intense and deeply sensitive Hamlet. This film is sure to receive Oscar nominations and is worth the price of a ticket to see.



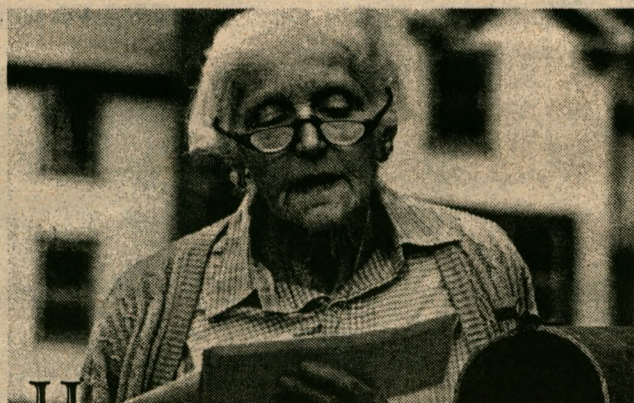
Gibson and Close, in the roles of Hamlet and Queen Gertrude in the Shakespearean film, "Hamlet".

He can murder and then have a conscience."

ages. The audience does not get the feeling that the film lacks consistency from these deletions, but

.....

The script for "Hamlet" was written by both Zeffirelli and Christopher De Vore. The duo also worked closely with John Barton of the Royal Shakespeare



Hold a piece of tape up to your eyes, dim the lights and try to fill out your taxes. Now you're seeing things from her point of view.

For this woman it's poor eyesight, for someone else it might be arthritis or maybe they just can't cope. The fact is, last year 4 million Americans got the help they needed from IRS Volunteer Assistance Programs.

If you have the desire to help and a basic aptitude for math, you could become a part of the IRS Volunteer Assistance Programs. So volunteer and call 1 800 424 1040. Beginning October 1, 1990, please call 1 800 829 1040.

Volunteer and make someone's taxes less taxing.



U.S. Department of Health & Human Services

TEST YOUR STRENGTH.

QUITTING. IT COULD BE THE TEST OF YOUR LIFE.

UPWARD BOUND

NEEDS TUTORS

\$15 /HOUR

Afternoons 2:30 - 4:00

ENGLISH, GEOMETRY, CALCULUS AND COMPUTERS

own transportation needed

Contact: Caryl Anne Rice-Ehalt (Director)

371-7864 or 371-7866

***ACADEMIC CENTER N-216**

This Week
SHU Offers...

February
BLACK HISTORY
MONTH

All this month- Lee Tribe's Welded Steel Sculpture Exhibit, Charles Plohn Gallery.

2- Gospel Jamboree Night presented by the University Choir in the SHU Theatre. Call 374-2777 for tickets.

3-Reception for Lee Tribe's Welded Steel Sculpture in the Charles Plohn Gallery, 1-4 p.m.
Tamburitzans Dance Troupe will appear in the SHU Theatre, p.m.

4-Men's Volleyball, Concordia and Bridgeport, 7 p.m. SHU BOX

Susan Taylor, ESSENCE Magazine's Editor-in-Chief will speak on "Be the Best You Can Be", Sponsoring by the Continuing Education Council and Office of Minority/Community Affairs, SHU Theatre, 7:30 p.m. For tickets call: 374-2777 or 371-7911.

5-American Association of University Professors meeting in the Faculty Lounge, 11 a.m. Contact Dr. Jean Sells, 371-7943.

11-Men's volleyball vs. Lehann, 7 p.m., SHU BOX

13- Men's volleyball vs. Hunter and Bridgeport, 6 p.m. SHU BOX

16-Men's volleyball vs. South Hampton and Bridgeport, 1 p.m., SHU BOX

19-"Issues of Political and Social Changes in 'Third World'" lecture. Speaker will be Dr. Trebon, Provost & Academic Vice President of Academic Affairs.

20-Reception for Dean's List Students, Hawley Lounge, 4-5:30 p.m.

23-Women's basketball vs. University of Bridgeport, 5 p.m. SHU BOX

Men's Basketball vs. University of Bridgeport, 7 p.m. SHU BOX

Please send all your calendar listings to the Spectrum c/o Funda Alp, S219 in the Academic Building or call 371-7966/7963. Thank you for your cooperation.

THE FAR SIDE By GARY LARSON



THE FAR SIDE By GARY LARSON



"Blast! Up to now, the rhino was one of my prime suspects."

THE FAR SIDE By GARY LARSON



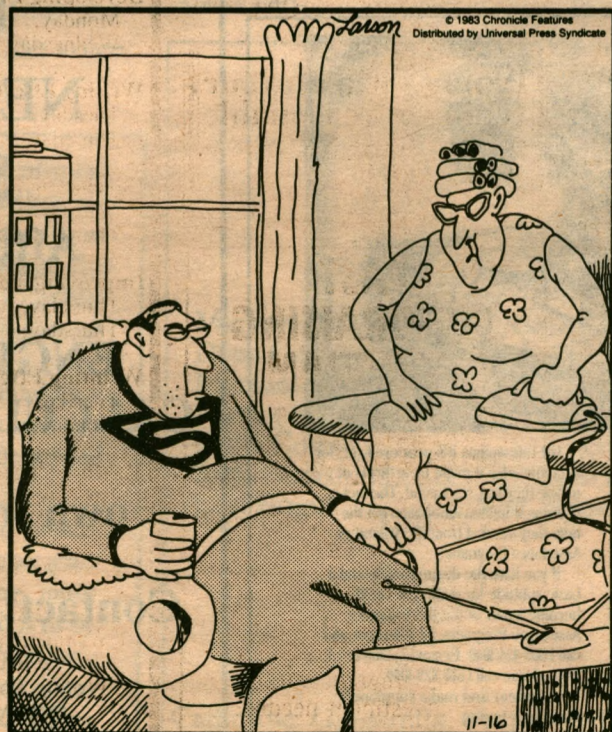
The Cyclops family at breakfast.

THE FAR SIDE By GARY LARSON



"Wouldn't you know it! . . . And always just before a big date!"

THE FAR SIDE By GARY LARSON



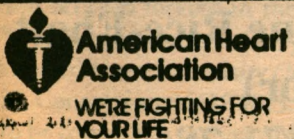
"By the way, we're playing cards with the Millers tonight . . . And Edna says if you promise not to use your X-ray vision, Warren promises not to bring his Kryptonite."

THE FAR SIDE By GARY LARSON



"So! . . . You must be the one they call 'The Kid.'"

We need you.



Part 2

Silver Anniversary Team named

Con't from pg. 12

three seasons.

Wright, of Newark, N.J., parlayed outstanding spring with an unerring shot, compiling 1,185 rebounds (fourth highest) and 1,842 points (10th). He holds the school's career field goal percentage record, with 581. Wright joined Bennett on the All-America squad in 1982-83.

Steve Zazuri, a 6-1 guard from Fairfield; was unsurpassed in hitting the open man and was a major contributor to three successive NCAA New England Regional championships. Zazuri compiled 956 assists in 125 games, an average of 7.7, and reached his zenith as a senior with 271 assists, an average of 8.2. All are SHU records.

A transfer from the University of Massachusetts, Bill Bayno made a strong impact in his two seasons at Sacred Heart, earning All-America honors as a senior in 1984-85. The 6-3 swingman from Goshen, NY combined tenacious

defensive ability with well-rounded offensive skills, producing 13.7 points, 175 assists, and 73 steals in his final year.

The nucleus of coach J. Donald Feeney's Final Four team, the 1976-77 squad which opened the season with 20 consecutive victories en route to a lustrous 28-4 record, was selected to the University's all-time team: Olivencia, Means, Winfree, and Trimboli.

Hector Olivencia, a springy 6-3 forward who played for Puerto Rico's Olympic team, was virtually unstoppable offensively. Twice an All-America, Olivencia holds SHU records for career field goals (997) and most points in a game—51 vs. AIC in 1977. His lifetime total of 2,317 points (21.3 average) stands second, and he is third in career field goal percent-

age (.544), fourth in free throw accuracy (.786).

lowed up with a 16.4 norm as a senior when the Pioneers reached the National Quarterfinals. He was voted to the All-America team both years. The giant from Staten Island, N.Y. who had played on Utah's National Invitation Tournament championship team in 1974, accounted for 1,009 rebounds, 938 points and more than 200 blocked shots for the Pioneers.

Carl Winfree and Tony Trimboli comprised a backcourt with few equals on the Division II level. The 6-2 Winfree, from DeWitt Clinton High in the Bronx, averaged 20.2 points for his Sacred Heart career, accounting for 2,196 points (fifth best). He topped the Pioneers in assists for four straight seasons, capped by 261 as a senior; in scoring twice, and in rebounds once. He was named All-

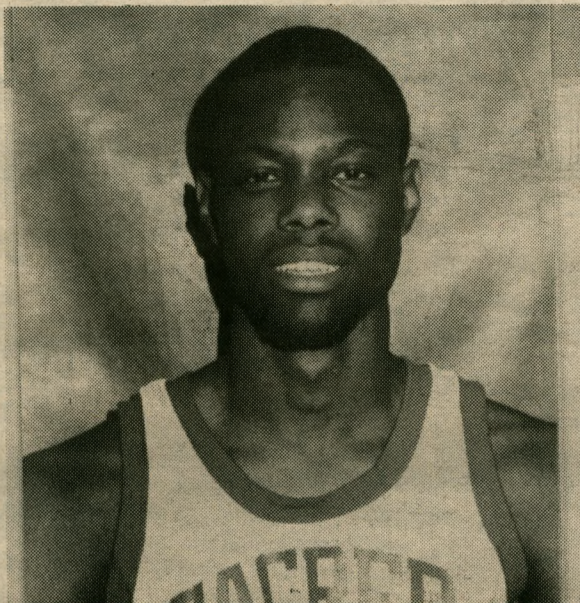
America in 1976-77.

Trimboli, who started at Norwalk High School, was a 19.8 career scorer, an average built with 2,234 points (third highest). Possessor of a superb shooting touch, the 5-11 guard connected on .506 percent of his field goal attempts and ranks third in lifetime free throw percentage, at .799. His .876 percentage as a senior still stands as a SHU record.

Rich Pucciarello was Sacred Heart's first great player, a 6-1 guard who compiled a 21.5 scoring average (second highest) and 2,212 points (third best) in four seasons. The native of Belleville, N.J. set the career free throw record, converting .812 percent of his attempts and once shot a perfect 15 for 15 in a game.

Sacred Heart's all-time team was selected by coaches Bike and Feeley, Don Harrison, and former SID Sandy Sulzycki.

To obtain tickets for the Homecoming game, reception, and buffet dinner on Feb. 9, contact the Sacred Heart University Alumni Office at 371-7861.



Tony Judkins

Andre Means, all 6-9 of him, was rebounding par excellence in his two seasons in a Sacred Heart uniform. He led the nation's Division II rebounders as a junior, averaging 16.1 in 1976-77, and fol-

Men's basketball

Con't from pg. 12

white Howard chipped in 21. Williams and Dubose each grabbed six rebounds. Scurry led NHC with 23.

The SHU cagers have always been fighters, and this year is no exception. Although they are still 8-11, the Pioneers are showing marked signs of improvement. However, the NECC is a tough league. Bike knows that every game is going to be a struggle. "In our league, we're not going to win

without good performance for lengths at a time. The idea is to sustain the effort throughout the game," he admits.

On Saturday, the Pioneers travel to Keene State. Sacred Heart was victorious in the first meeting, but by no means will it be an easy game. Next Wednesday, the Pioneers will look to avenge an 89-78 loss to Southern Connecticut as they face the Owls in New Haven.

Resume writing

Con't from pg. 3

babysitting experience counts for something. Have you worked as an EMT, been a Big Brother or Big Sister, done significant charity work? These qualifications may not win you a job, but it may get your foot through the door.

9) At the same time, you're not required to list such personal characteristics as age, height, weight, etc.; in fact, it's usually better to save those subjects for the interview.

10) Keep it to one page, if possible.

sible.

11) Brainstorm all of your qualifications, skills, experiences, that might in any way help you get some job some day. Don't be modest. File these lists away and for each job you apply for, you can recall the most relevant characteristics for that job.

In other words, personalization is the key. Your resume speaks for you, and a clear, descriptive resume will give you a leg up in the Great Employment Search.

MISSIVES FROM THE MADMAN

By The Madman

For those of you who know me or those who don't, I HATE the New York Giants and more so their obnoxious fans. Personally, I feel the Leonard Marshall late hit on Jim Kelly in the second quarter is indicative of the Giants style of play in one small instance.

But even though my hatred for the Giants runs deeper than American sentiment for Saddam Hussein, you must give the giants credit for a tremendous display of offensive ball control (for a record 40:27). MVP Ottis Anderson with 102 yards rushing was a leader by example the entire season. The poise of Jeff Hostetler and most importantly the offensive line, maligned for a good part of the season, made the difference. The run blocking clinic the giants displayed was textbook. Buffalo gave a superb effort but when you are able to hold the ball for 19 minutes and change and your defense is on the field for more than two

thirds of the contest, you aren't going to win very often. You really cannot fault Scott Norwood; kicks like the one he had aren't routine, especially under the circumstances.

I felt Buffalo was one offensive play away from winning this game; one more 10 yard gain and the outcome would have been different, but you can't change what happened and the Giants wear the crown.

Onto happier topics like our Pioneers and their "you gotta believe" campaign. The Pioneers put the "heart" back into Sacred Heart with two hard fought wins against superior teams in UB and New Hampshire College. The contest at UB saw the best first half of basketball I have ever seen by both teams in my six years of watching division II basketball. The Pioneers simply wanted both

contests more than their opposition. Phil "nice" Howard shot the lights out in the first half against UB (8-9 21 points; 23 for the game) and followed up with a 21 point performance against the Pennmen. Freshman Theo Gadsden not only was a major factor in controlling Lambert "Lamb Chop" Shell in the UB game, but his performance on both offense and defense was the key to the Pioneers second victory of the week.

One last note since the local papers do not take notice of this; but someone should commend the job Ed Swanson has done with the Lady Pioneers basketball team. Although they have won just four games thus far, there were several other contests that the Lady Pioneers could have won against superior sized opponents or horrendous officiating. Hang in there Ed, it will get better.

Workshop Skills Center

February 1991

Developing Effective Study Strategies			
Monday,	February 11th	5:00 pm	Turner
Wednesday,	February 27th	5:00pm	Greene
Writing Effective Sentences			
Tuesday,	February 5th	11:00am	Leto
Thursday,	February 14th	11:00 am	Turner
Developing Effective Note-Taking Skills			
Tuesday,	February 12th	11:00am	Santossio
Thursday,	February 21st	11:00 am	Santossio
Improving Your Test-Taking Skills			
Thursday,	February 7th	11:00 am	Santossio
Thursday,	February 14th	5:00 pm	Greene
Writing Effective Summary Essays			
Tuesday,	February 19th	11:00 am	Spector
Monday,	February 11th	10:00 am	Gorman
Writing a Clear, Effective Synthesis Essay			
Tuesday,	February 5th	10:00 am	Gorman
Thursday,	February 21st	10:00 am	Gorman
Workshops for EN 101 Students			
"Writing About Fiction"			
TBA		Spector	
"Writing About Poetry"			
TBA		Spector	
"Writing About Drama"			
TBA		Spector	
Writing For Social Work Students			
TBA		Capowich	

Typing - will do your typing at reasonable rates. Call Mary, 374 - 6601

FAST FUNDRAISING PROGRAM

\$1000 IN JUST ONE WEEK.

Earn up to \$1000 in one week for your campus organization.

Plus a chance at \$5000 more!

This program works! No investment needed.

Call 1-800-932-0528 Ext. 50

SPECTRUM is seeking Sports Writers

Anyone qualified and interested in Lacrosse and Volleyball coverage should contact Rick Ferris or Funda Alp at 371-7966 or stop by the SPECTRUM in S219

The MCAT Is When?

STANLEY H. KAPLAN
Take Kaplan Or Take Your Chances

Test Date April 27
Classes begin Feb 2,
Feb 12, Mar 4
Call 789-1169



Sports Briefs

The Men's Volleyball team begins their 1991 season tonight with matches against Vassar and Yeshiva in Poughkeepsie, New York. The squad is led by Lee Poeng and Mike Ghajar, and a strong supporting cast. The team will be guided by first year coach Steve Fordyce who is also assistant Football coach here at Sacred Heart.

Congratulations go to the Men's Basketball team who defeated the Purple Knights from UB 83-77, and won on a Theo Gadsden tip in with two seconds left in a 91-88 overtime victory over New Hampshire College. The team owns a 4-2 league record and is in second place a mere one game behind Franklin Pierce who is 5-1 in the league.

Attention Bowling fans!!! Intramural Bowling is here again. Every Thursday in February and the first one in March at Nutmeg Bowling Lane in Fairfield is where it's at. Each team will have five players, one of which must be female. Sign up in the gym with Coach Giaquinto.

Scoreboard

Men's Basketball (8-11/4-2)	
Sat. January 26	
New Hampshire College	88
Sacred Heart Univ.	91
	(OT)
Wed. January 23	
Sacred Heart Univ.	83
Univ. of Bridgeport	77
Women's Basketball (4-13/0-6)	
Sat. January 26	
New Hampshire College	66
Sacred Heart Univ.	46
Wed. January 23	
Sacred Heart Univ.	53
Univ. of Bridgeport	73

Schedule

Men's Basketball	
Feb. 2	Keene State Keene, NH 3 pm
Feb. 6	Southern Ct. New Haven, CT 7:30 pm
Women's Basketball	
Feb. 2	Keene State Keene, NH 1 pm
Feb. 6	Southern Ct. New Haven, CT 5:30pm
Men's Volleyball	
Jan. 31	Vassar & Yeshiva Poughkeepsie, NY 6 pm
Feb. 6	Queens College Flushing, NY 7 pm

Pioneers Triumph over UB and New Hampshire

By Amy Madison
Sports Writer

Once again, the Sacred Heart Men's Basketball team proved that they are not to be taken lightly. The University of Bridgeport and New Hampshire College got a large dose of Pioneer magic last week, as the Heart improved to 8-11 and moved into second place in the league at 4-2.

For years, UB coach Bruce Webster has been plagued by SHU, and no matter how poorly they have been doing, the Pioneers always cause trouble for their arch-rivals. In front of a packed house at the Harvey Hubbell Gymnasium last Wednesday, the Pioneers stunned previously 12th ranked UB 83-77. The first half of the game was filled with frequent possession changes and non-stop action. Although the Pioneers shot 61 percent for the half, the halftime score was tied at 51.

Early in the second half, the Pioneers were slapped with two technical fouls, the second being a rare one for head coach Dave Bike. Although Bike felt that the first technical on assistant coach Barry McLeod was unjustified, the call seemed to be a turning point for the Pioneers. With 6:45 remaining in the game, a tip-in by Todd Williams gave SHU a 76-69 lead, but UB's Lambert Shell cut the score to 76-75 at the 3:51 mark.

However, after Shell's basket, UB went scoreless for the next 3:50. Offensive fouls against the

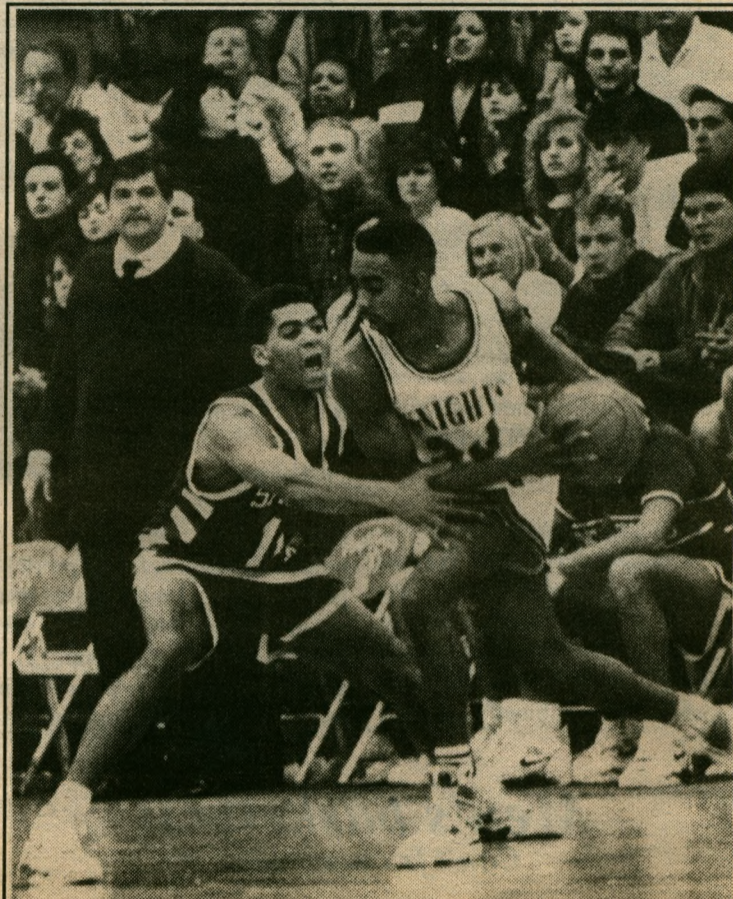
Knights, combined with strong Pioneer defense, which forced 19 UB turnovers, accounted for the UB drought. A dazzling dunk by Theo Gadsden at the 13-second mark sealed the hard-fought victory.

Williams led the Pioneers with 26 points and 10 rebounds. Rob Dubose also grabbed ten rebounds for the Heart. Phil Howard continued his impressive play, scoring a career high 20 points in the first half and finishing with 22 points. Darrin Robinson added 16, while only six Pioneers saw playing time. Shell paced UB with 22 points. Bike notes, "UB is still the best team in New England, but the best team doesn't always win."

The Pioneers knocked off New Hampshire College, another one of the best New England teams, in a 91-88 overtime win at the SHU Box last Saturday. The Pioneers led for most of the game, but the Penmen held a 77-71 lead with 1:50 remaining in regulation, after a layup by Penmen forward Willie Scurry.

The Pioneers came back, though, powered by Robinson, whose two foul shots with nine seconds left tied the game at 78. Strong defense prevented the Penmen from scoring and sent the game into overtime.

The score remained close throughout the overtime period. The Pioneers went ahead 87-84 on two free throws by Robo Vaughn, but the Penmen took the lead 88-87 after a Pioneer turnover.



Junior, Phil Howard (11) plays tight defense in an attempt to force a turnover from a U.B. Purple Knight. The SHU cagers upset the number 12-ranked team in Div II basketball on Wed. Jan. 23 in the Harvey Hubble Gymnasium.

Photo by Michael Champagne

With four seconds remaining, Williams prepared to throw the inbound pass to Robinson or Howard, but it was Gadsden who was open. Gadsden made it look easy as he spun around and dropped the ball in with two seconds left. New Hampshire was

then called for an intentional foul, and Robinson iced the win with two foul shots.

Gadsden and Robinson paced the Heart with 23 points apiece,

See Men's pg. 11

Part two Silver Anniversary Team announced

By Don Harrison
Sports Information Director

This is a special feature on the 25th Anniversary Basketball team. This week, we will look at the rest of the all-star squad.

Keith Johnson was overshadowed by several All-Americans in his four-year career, but he was consistency personified as exemplified by lifetime totals of 1,871 points and 863 rebounds, both of which rank ninth on the Pioneers' all-time list. The former West Haven High athlete was the leading rebounder (8.2) and shot-blocker (49) in the national championship year.

Kevin Stevens' three seasons were marked by consistent scoring and rebounding and strong performances in important games. The 6-5 forward from Norwalk accounted for 1,244 points (13.8 average) and was the Pioneers' leading rebounder in 1984-85 (8.3) and 1986-87 (8.0). Kevin was named to the 1986 Final Four all-tournament team, thanks largely to

his 19-point, seven-rebound effort in the championship game against Southeast Missouri State.

Tony Judkins is the Pioneers' most recent All-America, earning that recognition in 1987-88 and 1988-89. The angular 6-5 forward from Hartford concluded his four-year career with 2,009 points and 909 rebounds, which rank eighth and seventh, respectively, in SHU annals. Tony also launched the school's most famous shot—a 30 foot missile at the buzzer which upended Bridgeport, 69-67 in the 1989 NCAA New England Regional title game.

Keith Bennett and Rhonie Wright spent four seasons together at Sacred Heart, a period capped by successive trips to the NCAA National Quarterfinals in 1982 and 83. The 6-5 Bennett, from Stamford, was a 6-5 swingman capable of superb scoring on a nightly basis, amassing a record 2,431 points and a lifetime 20.3 average. He earned All-America recognition in his final

See All-star, pg. 11

Lady Pioneers look to regain stride

By Rick Ferris
Sports Editor

After two solid defeats at the hands of New Hampshire College and the University of Bridgeport, the Lady Pioneers look to regain the solid play of their first four league games in this week's rematches with Keene State and Southern Connecticut.

Junior Elaine Agosti said of the team, "as a team we are starting to come around. We haven't played that long together as we have a lot of newcomers. It's going to take some time to get to know each other's moves." Agosti continued, "even though we lost by 12 to Keene, we were up at halftime and played really strong, and they are one of the best teams in the league. In the past couple of years we would lose to those teams by 25 or 30 points. I think we are really coming around. I think the future, the way we are recruiting now is only going to get better. I wish I would be here a few more years, but I only have one year left." Agosti concluded that, "we

are going to be a team to contend with."

Saturday night, SHU lost to New Hampshire College 66-46. The score was tied at the half 27-27, but 31 turnovers in the game and a 24.1% shooting percentage in the second half did them in. There were only three players in double figures in scoring, two of which were Lady Pioneers, junior Alethia Osbourne had 11 points, while sophomore Karen Bell added ten. Jodi Linnehan led the Penmen with 11 points. Osbourne also chipped in 15 rebounds, and Bell added 11 rebounds.

Last Wednesday night, Sacred Heart lost to the University of Bridgeport 73-53. Bell scored 17 points for the Heart and grabbed seven rebounds, while Agosti chipped in 11 points.

SHU HOOPS: The Lady Pioneers played all but a few early minutes of Wednesday's game, and over half of the New Hampshire game without leading scorer and rebounder Diane Nicholls. Diane contracted bronchitis prior to the UB game.