

Lehigh University Lehigh Preserve

Fritz Laboratory Reports

Civil and Environmental Engineering

1962

Strain and dial gage readings, Supplement to F. L. Report No. 248.5, July 1962

R. H. Rampetsreiter

T. T. Lee

A. Ostapenko

Follow this and additional works at: <http://preserve.lehigh.edu/engr-civil-environmental-fritz-lab-reports>

Recommended Citation

Rampetsreiter, R. H.; Lee, T. T.; and Ostapenko, A., "Strain and dial gage readings, Supplement to F. L. Report No. 248.5, July 1962" (1962). *Fritz Laboratory Reports*. Paper 1675.
<http://preserve.lehigh.edu/engr-civil-environmental-fritz-lab-reports/1675>

This Technical Report is brought to you for free and open access by the Civil and Environmental Engineering at Lehigh Preserve. It has been accepted for inclusion in Fritz Laboratory Reports by an authorized administrator of Lehigh Preserve. For more information, please contact preserve@lehigh.edu.

2 Copies
#2

Built-Up Members in Plastic Design

TESTS ON LONGITUDINALLY STIFFENED PLATE PANELS

Effect of Residual Stresses and Rotational
Restraint by Stiffeners

S T R A I N A N D D I A L G A G E

R E A D I N G S

by

Robert H. Rampetsreiter
Ti-ta Lee
Alexis Ostapenko

This work has been carried out as a part of an investigation sponsored by the Department of the Navy with funds furnished by the Office of Naval Research Contract Nonr 610(03).

Reproduction of this report in whole or in part is permitted for any purpose of the United States Government.

Fritz Engineering Laboratory
Department of Civil Engineering
Lehigh University
Bethlehem, Pennsylvania
July 1962

Fritz Engineering Laboratory Report No. 248.5A
(Supplement to F. L. Report No. 248.5)

DEPARTMENT OF CIVIL ENGINEERING
FRITZ ENGINEERING LABORATORY
LEHIGH UNIVERSITY
BETHLEHEM, PENNSYLVANIA

TABLE OF CONTENTS

| | Page |
|--------------------------|------|
| 1. INTRODUCTION | 1 |
| 2. STRAIN GAGE READINGS | 5 |
| Table 1. SPECIMEN T-6 | 10 |
| Table 2. SPECIMEN T-7 | 16 |
| Table 3. SPECIMEN T-8 | 21 |
| Table 4. SPECIMEN T-9 | 26 |
| Table 5. SPECIMEN T-10S | 31 |
| 3. DIAL GAGE READINGS | 35 |
| Table 6. SPECIMEN T-6 | 39 |
| Table 7. SPECIMEN T-7 | 43 |
| Table 8. SPECIMEN T-8 | 47 |
| Table 9. SPECIMEN T-9 | 51 |
| Table 10. SPECIMEN T-10S | 55 |

1. I N T R O D U C T I O N

This report is a supplement to Fritz Engineering Laboratory Report No. 248.5, "TESTS ON LONGITUDINALLY STIFFENED PLATE PANELS" (CONTINUATION OF FRITZ LAB REPORT NO. 248.4), and contains all the readings of the strain and dial gages taken during the tests.

The readings are presented in the form of tables. Neither smoothing nor zero adjustment of the data was carried out - the data were only reduced to the first reading whether it was at a zero load or not.

The strain gage readings are given in Tables 1 to 5 and the dial gage readings are given in Tables 6 to 10. Each table contains the appropriate readings for one specimen.

Nominal dimensions of the test specimens are shown in Figs. 1, 2, and 3 on pp. 2, 3, and 4, respectively.

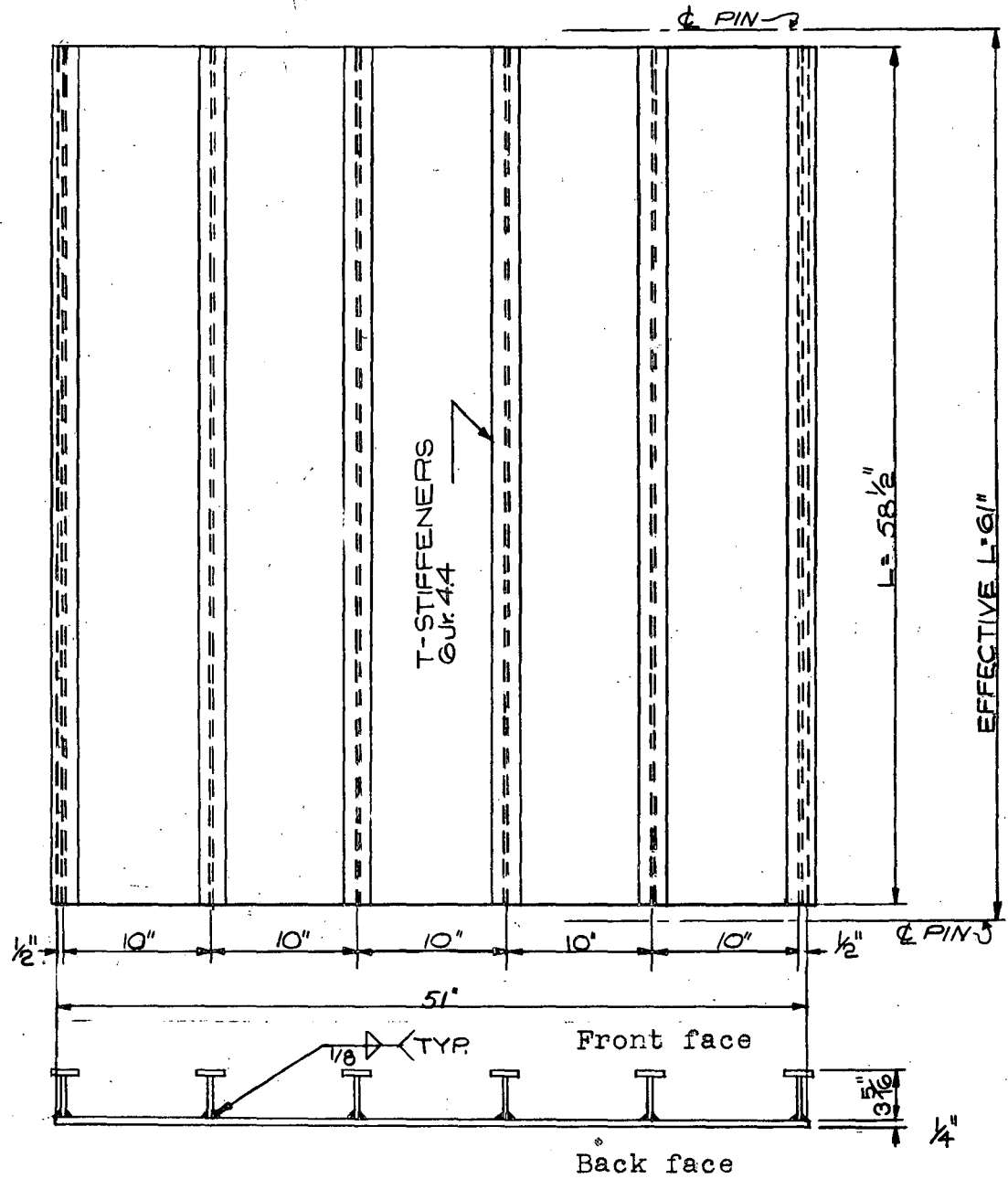


Fig. 1 TEST SPECIMEN DIMENSIONS (T-6)

SCALE: 1"=1'-0"

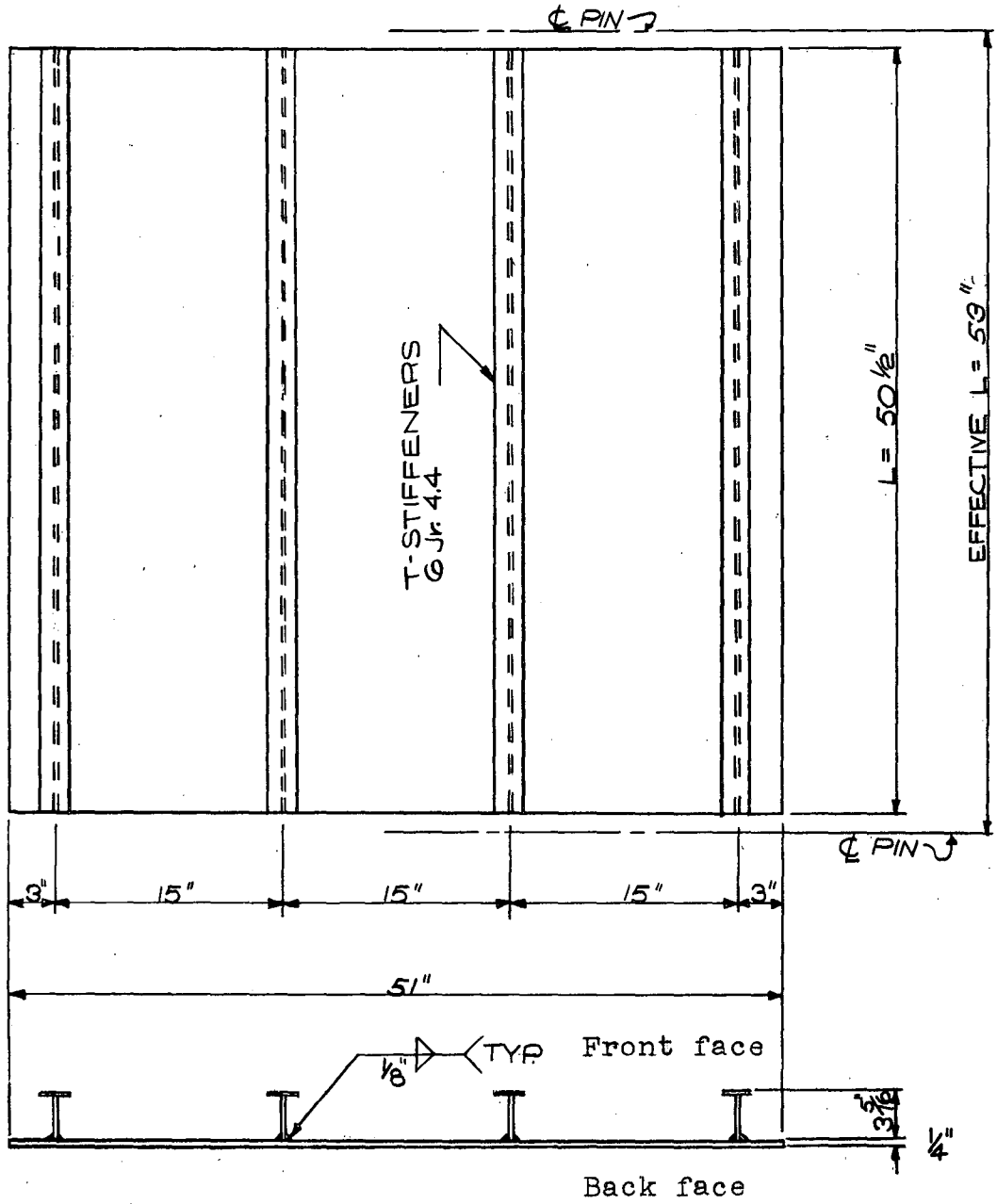


Fig. 2 TEST SPECIMEN DIMENSIONS (T-7, T-8, T-9)
SCALE 1"=1'-0"

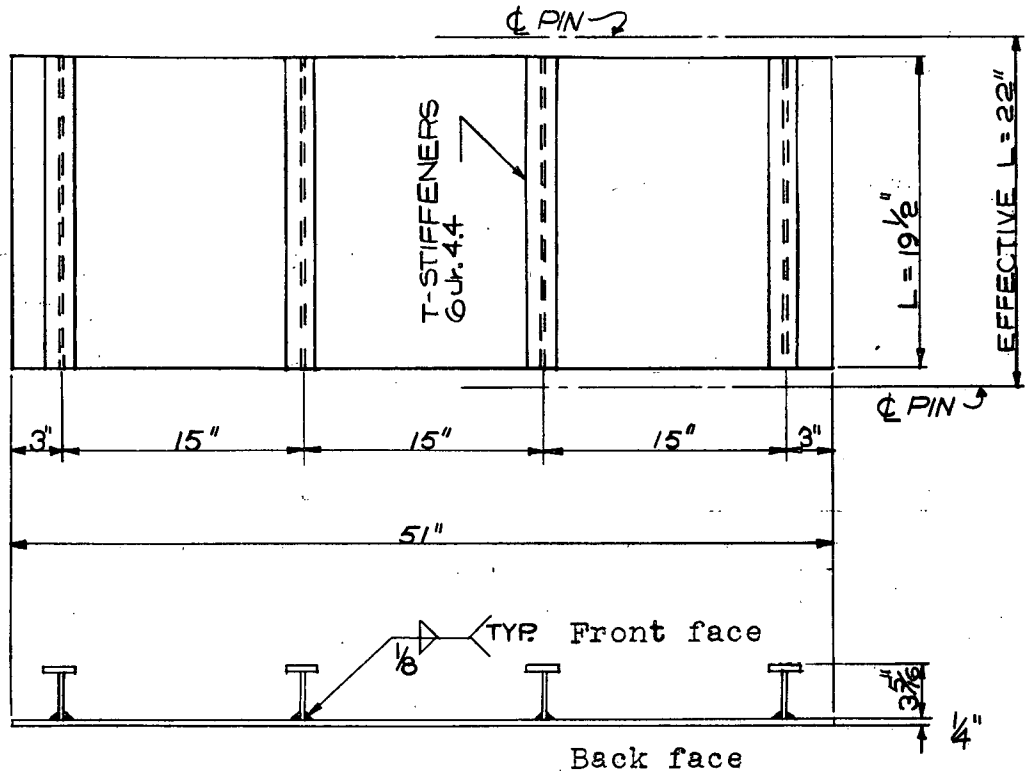
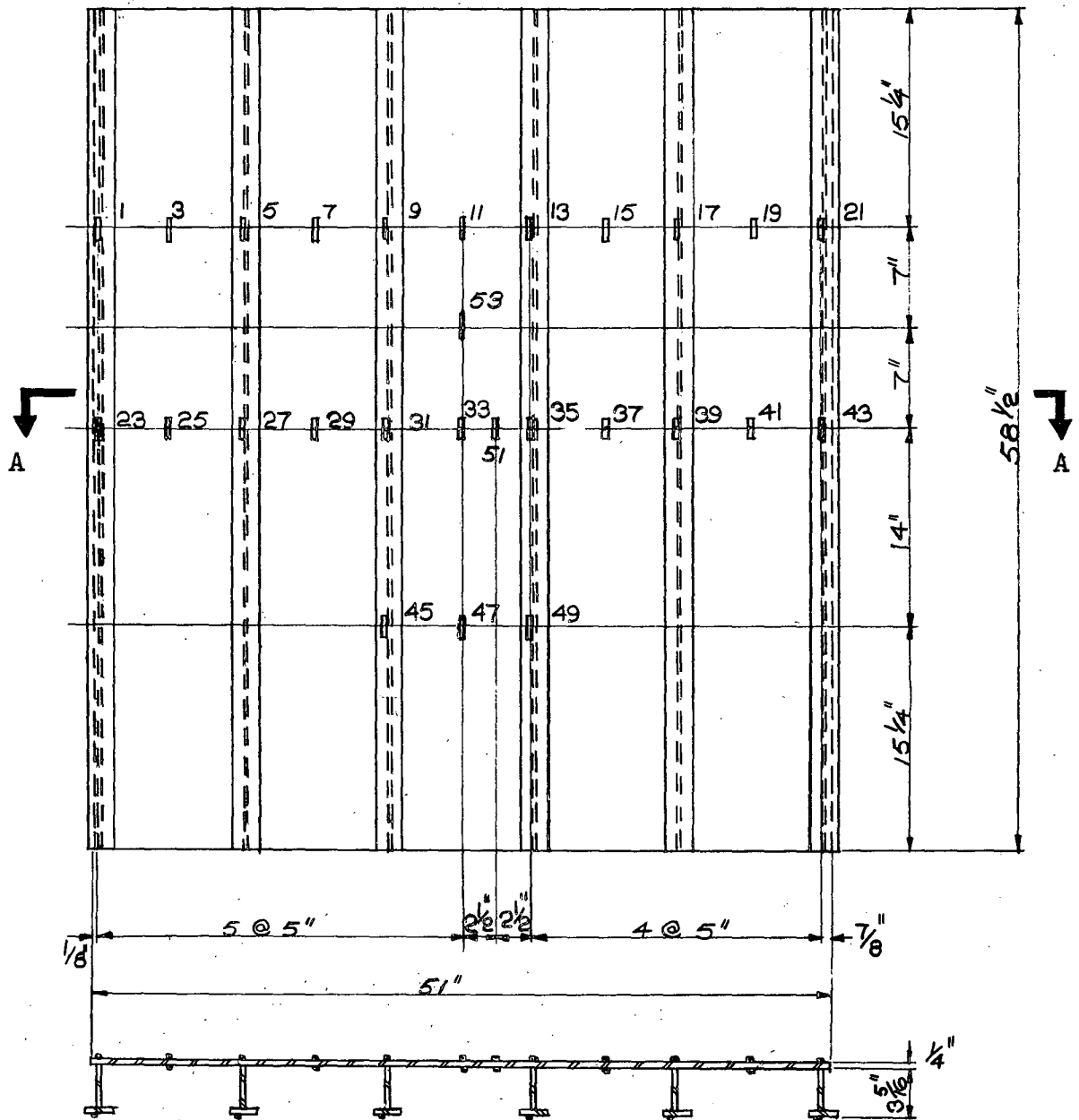


Fig. 3 TEST SPECIMEN DIMENSIONS (T-10S)
 SCALE 1"=1'-0"

2. S T R A I N G A G E R E A D I N G S

Locations and directions of SR-4 strain gages are depicted in Figs. 4, 5, and 6 on pp. 6, 7, and 8, respectively. Each specimen had a somewhat different arrangement and number of gages. Table A, page 9, shows which gages were used on which specimen. All readings were taken on strain indicators.

All readings are given in micro-inches per inch with minus sign indicating shortening and no sign indicating elongation.



Section A-A

Fig. 4 LOCATION OF SR-4 STRAIN GAGES (T-6).

Note: For each gage on the front face there is a corresponding gage on the back face. The gage number on the back face is the following even number to that of the gage on the front face.

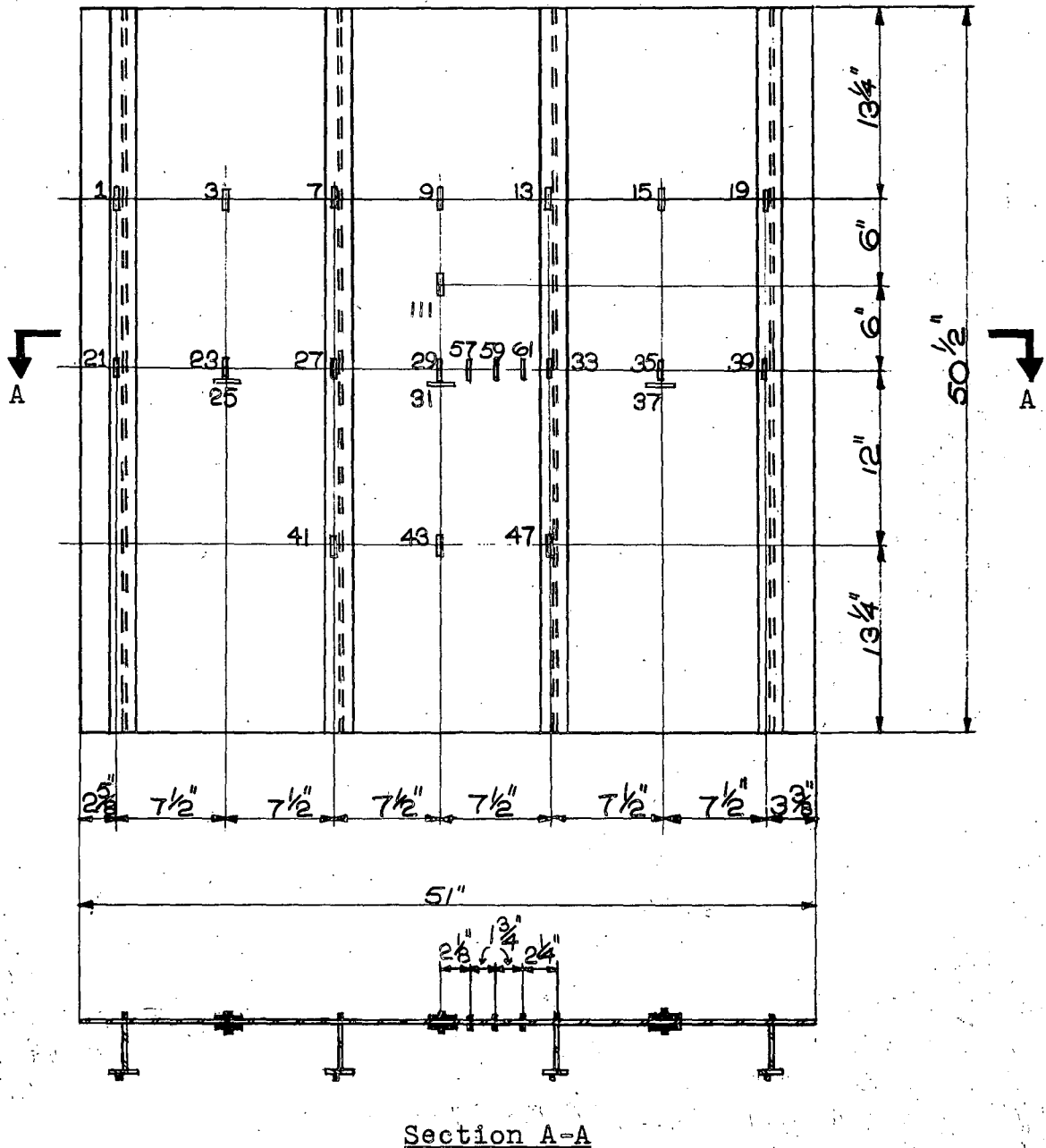
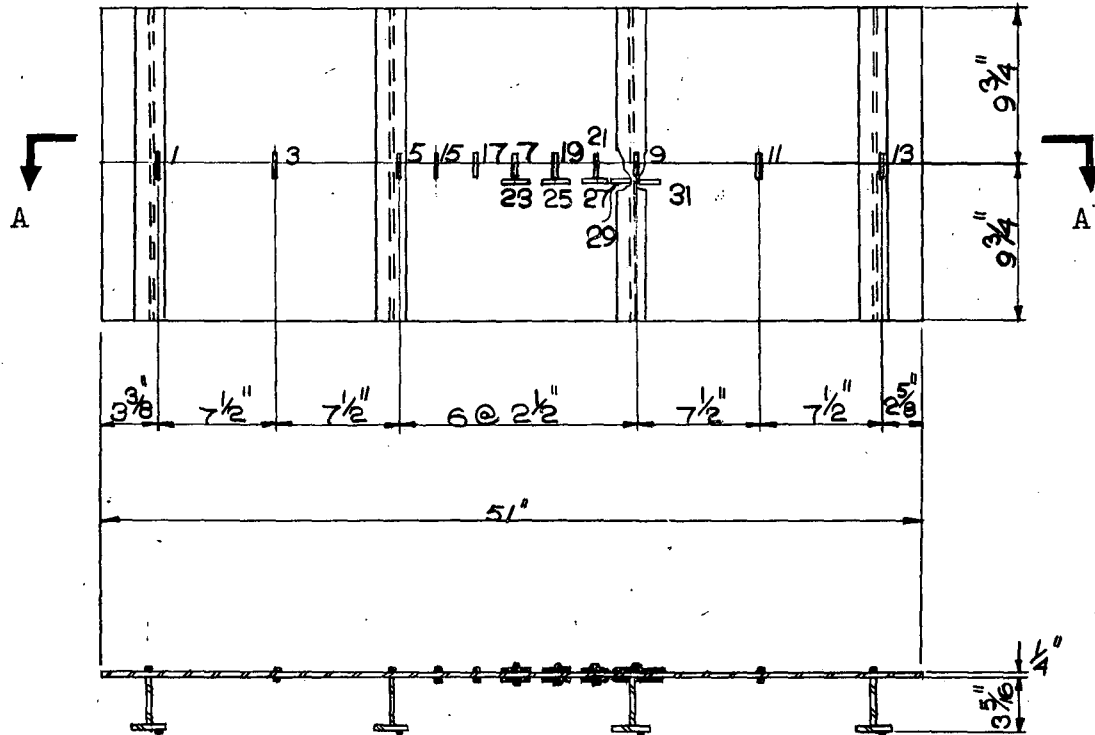


Fig. 5 LOCATION OF SR-4 STRAIN GAGES (T-7, T-8, T-9)

- Notes: 1. For each gage on the front face there is a corresponding gage on the back face. The gage number on the back face is the following even number to that of the gage on the front face.
2. Table A shows which gages were used on which specimen.



Section A-A

Fig. 6 LOCATION OF SR-4 STRAIN GAGES (T-10S)

Note: For each gage on the front face there is a corresponding gage on the back face. The gage number on the back face is the following even number to that of the gage on the front face.

Table A: ARRANGEMENT OF SR-4 STRAIN GAGES

| Specimen | Gages on Specimen | Total number of Gages |
|----------|--|-----------------------|
| T-6 | 1 to 54 | 54 |
| T-7 | 1 to 4, 7 to 10, 13 to 16, 19 to 24, 27 to 30, 33 to 44, 47 and 48, 57 to 62 111 and 112 | 44 |
| T-8 | 1 to 4, 7 to 10, 13 to 16, 19 to 44, 47 and 48, 59 and 60 | 42 |
| T-9 | 1 to 4, 7 to 10, 13 to 16 19 to 44, 47 and 48, 59 and 60 | 42 |
| T-10S | 1 to 32 | 32 |

Table 1. STRAIN GAGE READINGS-SPECIMEN T-6(10⁻⁶ in. per in.)

| Ld. No. | Loads | | Gage Nos. | | | | | | | |
|------------|---------------|-----------------|-----------|-------|-------|-------|-----|-------|-------|-------|
| | Lat. (psi) | Axial (kips) | 1 | 2 | 3 | 4 | 5 | 6 | 7 | 8 |
| 1 | 1.96 | 0 | 0 | 0 | 0 | 0 | 0 | 0 | 0 | 0 |
| 2 | 3.93 | 0 | 95 | -1 | -13 | -50 | 165 | -82 | 0 | -37 |
| 3 | 5.89 | 0 | 197 | -41 | -26 | -102 | 340 | -126 | -39 | -75 |
| 4 | 6.48 | 0 | 245 | -61 | -38 | -105 | 350 | -142 | -30 | -105 |
| 5 | " | 50 | 238 | -148 | -138 | -220 | 325 | -254 | -165 | -210 |
| 6 | " | 100 | 173 | -273 | -258 | -319 | 257 | -364 | -258 | -315 |
| 7 | " | 200 | 95 | -441 | -446 | -529 | 110 | -572 | -462 | -523 |
| 8 | " | 300 | -33 | -596 | -608 | -725 | -5 | -772 | -680 | -722 |
| 9 | " | 400 | -125 | -756 | -798 | -887 | -80 | -992 | -905 | -1009 |
| 10 | " | 423 | -110 | -869 | -948 | -980 | -75 | -1144 | -945 | -1255 |
| 11 | " | 442 | 103 | -951 | -1083 | -1160 | -40 | -1257 | -1240 | -2075 |
| 12 | " | 450 | -60 | -1051 | -1215 | -1395 | 15 | -1382 | -1700 | -3355 |
| 13 | " | 458 | -13 | -1201 | -1600 | -1828 | 82 | -1562 | -1940 | -4712 |
| 14 | " | 460 | 60 | -1271 | -1718 | -2030 | 110 | -1622 | -1967 | -5050 |
| 15 | " | 462 | 43 | -1313 | -1778 | -2098 | 130 | -1672 | -1955 | -5157 |
| 16 | " | 463 | 105 | -1381 | -1837 | -2200 | 165 | -1732 | -1990 | -5414 |
| 17 | " | 453 | 193 | -1561 | -2048 | -2460 | 245 | -1842 | -2000 | -5705 |
| 18 | " | 422 | 415 | -1881 | -2445 | -2700 | 425 | -1932 | -1975 | -5685 |
| 19 | " | 397 | 425 | -1821 | -2413 | -2660 | 432 | -1852 | -1930 | -5605 |
| 20 | " | 330 | 445 | -1711 | -2318 | -2552 | 440 | -1742 | -1820 | -5482 |
| 21 | " | 297 | 425 | -1561 | -2193 | -2417 | 450 | -1592 | -1715 | -5325 |
| 22 | " | 348 | 415 | -1701 | -2303 | -2540 | 433 | -1732 | -1825 | -5472 |
| 23 | " | 398 | 463 | -1811 | -2418 | -2645 | 437 | -1850 | -1930 | -5595 |
| 24 | " | 398 | 605 | -1961 | -2468 | -2710 | 525 | -1842 | -1870 | -5611 |
| 25 | " | 263 | 1040 | -1726 | -2188 | -2477 | 893 | -1572 | -1638 | -5357 |
| 26 | " | 54 | 637 | -1141 | -1698 | -1850 | 590 | -957 | -1198 | -4673 |
| 27 | " | 0 | 545 | -1006 | -1558 | -1725 | 490 | -794 | -1080 | -4485 |
| 28 | 3.93 | 0 | 415 | -958 | -1513 | -1680 | 260 | -754 | -1077 | -4425 |

Table 1. STRAIN GAGE READINGS-SPECIMEN T-6 (Cont'd)(10⁻⁶ in. per in.)

| Ld No. | Gage Nos. | | | | | | | | | |
|-----------|-----------|-------|-------|-------|------|-------|-------|-------|------|-------|
| | 9 | 10 | 11 | 12 | 13 | 14 | 15 | 16 | 17 | 18 |
| 1 | 0 | 0 | 0 | 0 | 0 | 0 | 0 | 0 | 0 | 0 |
| 2 | 160 | -41 | -30 | -35 | 150 | -48 | -20 | -50 | 146 | -41 |
| 3 | 339 | -82 | -60 | -75 | 310 | -90 | -54 | -90 | 300 | -171 |
| 4 | 368 | -92 | -60 | -95 | 360 | 0 | -70 | -100 | 340 | -111 |
| 5 | 290 | -202 | -170 | -197 | 300 | -205 | -170 | -199 | 280 | -201 |
| 6 | 210 | -282 | -274 | -295 | 210 | -295 | -268 | -282 | 185 | -301 |
| 7 | 55 | -517 | -490 | -500 | 35 | -515 | -480 | -470 | 20 | -516 |
| 8 | -60 | -747 | -720 | -710 | -80 | -719 | -735 | -680 | -93 | -751 |
| 9 | -135 | -1012 | -970 | -970 | -184 | -1018 | -1170 | -870 | -200 | -1056 |
| 10 | -135 | -1182 | -1080 | -1035 | -178 | -1178 | -1650 | -970 | 190 | -1278 |
| 11 | -100 | -1302 | -1150 | -1055 | -125 | -1320 | -2100 | -1029 | -112 | -1471 |
| 12 | -80 | -1415 | -1185 | -1063 | -112 | -1410 | -2410 | -1070 | -97 | -1578 |
| 13 | 10 | -1592 | -1200 | -1035 | -40 | -1540 | -2880 | -1090 | -25 | -1771 |
| 14 | 20 | -1622 | -1200 | -1015 | -22 | -1590 | -3015 | -1070 | 0 | -1831 |
| 15 | 40 | -1657 | -1212 | -1005 | -9 | -1610 | -3080 | -1055 | 10 | -1878 |
| 16 | 80 | -1697 | -1220 | -1005 | 20 | -1658 | -3180 | -1055 | 55 | -1928 |
| 17 | 160 | -1739 | -1185 | -960 | -900 | -1615 | -3150 | -1020 | 140 | -1993 |
| 18 | 245 | -1642 | -1115 | -847 | 183 | -1525 | -2965 | -1008 | 285 | -1921 |
| 19 | 265 | -1572 | -1050 | -800 | 200 | -1450 | -2900 | -960 | 295 | -1856 |
| 20 | 270 | -1432 | -938 | -700 | 210 | -1355 | -2770 | -885 | 295 | -1746 |
| 21 | 283 | -1322 | -815 | -575 | 232 | -1225 | -2630 | -795 | 295 | -1621 |
| 22 | 270 | -1457 | -930 | -685 | 205 | -1335 | -2760 | -880 | 275 | -1741 |
| 23 | 260 | -1567 | -1040 | -795 | 195 | -1470 | -2900 | -980 | 280 | -1856 |
| 24 | 327 | -1554 | -1050 | -770 | 280 | -1468 | -2860 | -1010 | 345 | -1871 |
| 25 | 643 | -1319 | -855 | -527 | 690 | -1270 | -2563 | -940 | 685 | -1661 |
| 26 | 410 | -722 | -300 | -35 | 420 | -700 | -1970 | -465 | 395 | -1051 |
| 27 | 370 | -562 | -160 | 100 | 380 | -570 | -1805 | -360 | 405 | -891 |
| 28 | 160 | -517 | -150 | 115 | 175 | -520 | -1788 | -322 | 190 | -841 |

Table 1: STRAIN GAGE READINGS-SPECIMEN T-6 (Cont'd)(10⁻⁶ in. per in.)

| Ld No. | Gage Nos. | | | | | | | | | |
|-----------|-----------|--------|------|-------|------|--------|-------|--------|-------|--------|
| | 19 | 20 | 21 | 22 | 23 | 24 | 25 | 26 | 27 | 28 |
| 1 | 0 | 0 | 0 | 0 | 0 | 0 | 0 | 0 | 0 | 0 |
| 2 | -47 | -50 | 100 | -33 | 150 | -37 | -22 | -38 | 212 | -58 |
| 3 | -398 | -95 | 210 | -68 | 274 | -74 | -32 | -83 | 474 | -126 |
| 4 | -565 | -105 | 242 | -80 | 331 | -84 | -44 | -98 | 529 | -138 |
| 5 | -670 | -208 | 205 | -143 | 302 | -228 | -157 | -220 | 481 | -268 |
| 6 | -675 | -329 | 95 | -238 | 244 | -324 | -264 | -330 | 421 | -368 |
| 7 | -865 | -605 | -70 | -438 | 180 | -523 | -443 | -528 | 263 | -579 |
| 8 | -395 | -1050 | -220 | -638 | 87 | -701 | -622 | -728 | 189 | -790 |
| 9 | -610 | -3008 | -318 | -923 | 17 | -1033 | -1604 | -820 | 163 | -1138 |
| 10 | -840 | -3105 | -300 | -1133 | 64 | -1242 | -2324 | -1216 | 226 | -1406 |
| 11 | -495 | -5005 | -260 | -1317 | 103 | -1372 | -2653 | -1917 | 276 | -1667 |
| 12 | -598 | -5630 | -260 | -1423 | 167 | -1499 | -2910 | -2516 | 401 | -1837 |
| 13 | -720 | -7115 | -185 | -1618 | 222 | -1752 | -3132 | -3553 | 490 | -2179 |
| 14 | -1305 | -7540 | -175 | -1696 | 287 | -1850 | -3216 | -4087 | 551 | -2314 |
| 15 | -1803 | -7855 | -150 | -1753 | 300 | -1906 | -3240 | -4378 | 571 | -2396 |
| 16 | -1820 | -18805 | -135 | -1850 | 352 | -1994 | -3290 | -4936 | 623 | -2550 |
| 17 | -1772 | -19495 | -20 | -2073 | 503 | -2244 | -3320 | -6398 | 809 | -2023 |
| 18 | -1985 | -19577 | 155 | -2303 | 852 | -2772 | -3087 | -9185 | 1762 | -4716 |
| 19 | 55 | -19485 | 165 | -2238 | 832 | -2727 | -3072 | -9163 | 1943 | -4706 |
| 20 | -100 | -19280 | 175 | -2133 | 807 | -2582 | -3082 | -8956 | 1890 | -4553 |
| 21 | -550 | -19075 | 168 | -1998 | 785 | -2420 | -3080 | -8746 | 1843 | -4398 |
| 22 | -585 | -19265 | 165 | -2118 | 762 | -2571 | -3085 | -8946 | 1862 | -5548 |
| 23 | -565 | -19470 | 160 | -2243 | 837 | -2717 | -3061 | -9136 | 1930 | -4686 |
| 24 | -430 | -19545 | 318 | -2383 | 2382 | -5714 | -2211 | -12680 | 5129 | -7896 |
| 25 | -535 | -19185 | 1060 | -2218 | - | -15656 | 3524 | -22482 | 20456 | -18648 |
| 26 | -275 | -18140 | 760 | -1563 | - | -14467 | 3031 | -21335 | 20708 | -17362 |
| 27 | -355 | -17840 | 680 | -1368 | - | -14047 | 2886 | -20998 | 20446 | -16598 |
| 28 | -465 | -17765 | 540 | -1315 | - | -13857 | 2858 | -20911 | 20056 | -16833 |

Table 1: STRAIN GAGE READINGS-SPECIMEN T-6 (Cont'd)(10⁻⁶ in. per in.)

| Ld No. | Gage Nos. | | | | | | | | | |
|-----------|-----------|--------|------|--------|-------|-------|--------|--------|-------|--------|
| | 29 | 30 | 31 | 32 | 33 | 34 | 35 | 36 | 37 | 38 |
| 1 | 0 | 0 | 0 | 0 | 0 | 0 | 0 | 0 | 0 | 0 |
| 2 | -9 | -34 | 198 | -59 | -32 | -40 | 196 | -50 | -41 | -78 |
| 3 | -47 | -73 | 400 | -121 | -69 | -99 | 383 | -122 | -59 | -118 |
| 4 | -64 | -100 | 462 | -142 | -57 | -114 | 455 | -139 | -77 | -152 |
| 5 | -174 | -217 | 411 | -251 | -172 | -200 | 426 | -234 | -155 | -249 |
| 6 | -290 | -307 | 345 | -354 | -270 | -300 | 347 | -332 | -243 | -335 |
| 7 | -494 | -513 | 219 | -562 | -543 | -554 | 223 | -550 | -482 | -558 |
| 8 | -704 | -715 | 158 | -782 | -771 | -764 | 157 | -785 | -677 | -790 |
| 9 | -970 | -995 | 120 | -1062 | -1084 | -1000 | 125 | -1561 | -904 | -1040 |
| 10 | -1582 | -1743 | 185 | -1320 | -1640 | -1403 | 204 | -1510 | -1065 | -2009 |
| 11 | -1321 | -2677 | 246 | -1562 | -1839 | -1600 | 270 | -1810 | -1149 | -1038 |
| 12 | -2154 | -3222 | 304 | -1700 | -1830 | -1604 | 335 | -2015 | -1202 | -1139 |
| 13 | -3114 | -3943 | 413 | -1954 | -1821 | -1623 | 468 | -2402 | -1439 | -1509 |
| 14 | -3332 | -4203 | 448 | -2077 | -1820 | -1616 | 510 | -2599 | -1575 | -1856 |
| 15 | -3416 | -4353 | 478 | -2104 | -1822 | -1612 | 555 | -2778 | -1620 | -2098 |
| 16 | -3577 | -4625 | 540 | -2253 | -1804 | -1598 | 635 | -3258 | -1682 | -2765 |
| 17 | -3753 | -5455 | 795 | -2852 | -1733 | -1424 | 995 | -3260 | -915 | -8182 |
| 18 | -3074 | -9023 | 1502 | -4950 | -1660 | -986 | 2685 | -9032 | 2061 | -17495 |
| 19 | -3030 | -9075 | 1512 | -4920 | -1614 | -967 | 3117 | -8955 | 2036 | -17395 |
| 20 | -2992 | -8893 | 1502 | -4763 | -1534 | -920 | 3055 | -8712 | 1948 | -17089 |
| 21 | -2892 | -8687 | 1440 | -4591 | -1422 | -860 | 2976 | -8489 | 1855 | -16813 |
| 22 | -2987 | -8865 | 1485 | -4750 | -1513 | -917 | 3030 | -8679 | 1935 | -17061 |
| 23 | -3014 | -9057 | 1542 | -4900 | -1602 | -958 | 3106 | -8959 | 2038 | -17385 |
| 24 | -1759 | -13230 | 2988 | -7255 | -1564 | -790 | 6217 | -11274 | 4172 | -21665 |
| 25 | 2458 | -18686 | - | -14869 | -1041 | -773 | -20808 | -10127 | - | -30036 |
| 26 | 1966 | -17445 | - | -13625 | -710 | -682 | - | -17757 | 10158 | -28581 |
| 27 | 1796 | -17222 | - | -13257 | -650 | -634 | - | -17323 | 9504 | - |
| 28 | 1748 | -16992 | - | -13133 | -642 | -600 | - | -17165 | 9443 | - |

Table 1: STRAIN GAGE READINGS-SPECIMEN T-6 (Cont'd)(10⁻⁶ in. per in.)

| Ld No. | Gage Nos. | | | | | | | | | |
|-----------|-----------|--------|--------|-------|------|-------|-----|-------|-------|-------|
| | 39 | 40 | 41 | 42 | 43 | 44 | 45 | 46 | 47 | 48 |
| 1 | 0 | 0 | 0 | 0 | 0 | 0 | 0 | 0 | 0 | 0 |
| 2 | 212 | -56 | -24 | -318 | 133 | -38 | 189 | -98 | -9 | -90 |
| 3 | 401 | -107 | -49 | -362 | 272 | -79 | 325 | -78 | -72 | -107 |
| 4 | 478 | -119 | -56 | -378 | 310 | -88 | 384 | -119 | -80 | -156 |
| 5 | 440 | -208 | -140 | -459 | 253 | -169 | 306 | -210 | -159 | -243 |
| 6 | 348 | -304 | -240 | -545 | 151 | -251 | 236 | -302 | -240 | -365 |
| 7 | 202 | -511 | -432 | -759 | -20 | -499 | 86 | -545 | -433 | -577 |
| 8 | 112 | -737 | -638 | -960 | -167 | -705 | -14 | -715 | -641 | -747 |
| 9 | 51 | -1077 | -883 | -1042 | -280 | -920 | -55 | -970 | -930 | -947 |
| 10 | 99 | -1366 | -1066 | -962 | -270 | -1109 | -52 | -1111 | -1122 | -1046 |
| 11 | -830 | -1569 | -1181 | -939 | -239 | -1254 | -35 | -1249 | -1233 | -1097 |
| 12 | 202 | -1693 | -1243 | -907 | -218 | -1337 | 5 | -1285 | -1288 | -1171 |
| 13 | 310 | -1960 | -1404 | -840 | -166 | -1501 | 38 | -1408 | -1388 | -1129 |
| 14 | 345 | -2075 | -1470 | -810 | -160 | -1569 | 78 | -1429 | -1401 | -1125 |
| 15 | 378 | -2167 | -1539 | -785 | -151 | -1621 | 85 | -1441 | -1431 | -1130 |
| 16 | 442 | -2340 | -1689 | -718 | -122 | -1714 | 95 | -1498 | -1461 | -1108 |
| 17 | 635 | -3231 | -2021 | -438 | -15 | -1998 | 173 | -1466 | -1458 | -1110 |
| 18 | 1438 | -5377 | -7887 | 689 | 220 | -2744 | 287 | -1436 | -1331 | -1057 |
| 19 | 1448 | -5297 | -7751 | 679 | 225 | -2684 | 301 | -1378 | -1282 | -1008 |
| 20 | 1404 | -5131 | -7543 | 646 | 228 | -2563 | 314 | -1308 | -1161 | -907 |
| 21 | 1355 | -4894 | -7276 | 621 | 206 | -2378 | 325 | -1156 | -1042 | -850 |
| 22 | 1381 | -5110 | -7512 | 644 | 208 | -2549 | 310 | -1293 | -1140 | -920 |
| 23 | 1429 | -5289 | -7733 | 672 | 211 | -2689 | 297 | -1372 | -1281 | -1031 |
| 24 | 3093 | -7093 | -10678 | 1501 | 485 | -3161 | 380 | -1408 | -1261 | -1040 |
| 25 | 18420 | -13012 | -16435 | 4528 | 6754 | -4141 | 765 | -1118 | -1021 | -847 |
| 26 | 18077 | -11674 | -15233 | 3902 | 6338 | -3239 | 510 | -580 | -484 | -400 |
| 27 | 17915 | -11276 | -14912 | 3750 | 6198 | -2979 | 475 | -458 | -366 | -287 |
| 28 | 17555 | -11164 | -14830 | 3725 | 6002 | -2835 | 255 | -408 | -341 | -260 |

Table 1: STRAIN GAGE READINGS-SPECIMEN T-6 (Cont'd)(10⁻⁶ in. per in.)

| Ld No. | Gage Nos. | | | | | |
|-----------|-----------|-------|-------|-------|-------|-------|
| | 49 | 50 | 51 | 52 | 53 | 54 |
| 1 | 0 | 0 | 0 | 0 | 0 | 0 |
| 2 | 117 | -1032 | 12 | -31 | -37 | -49 |
| 3 | 316 | -1062 | -14 | -105 | -40 | -78 |
| 4 | 356 | -1092 | -72 | -127 | -59 | -123 |
| 5 | 357 | -1176 | -149 | -217 | -168 | -203 |
| 6 | 244 | -1269 | -229 | -297 | -252 | -318 |
| 7 | 77 | -1469 | -467 | -515 | -411 | -528 |
| 8 | -3 | -1680 | -699 | -703 | -586 | -797 |
| 9 | -130 | -1913 | -960 | -954 | -853 | -1169 |
| 10 | -123 | -2008 | -1048 | -937 | -957 | -1359 |
| 11 | -127 | -2098 | -1065 | -1006 | -1036 | -1329 |
| 12 | -56 | -2161 | -1073 | -1088 | -1076 | -1296 |
| 13 | -35 | -2267 | -1164 | -1277 | -1206 | -1244 |
| 14 | -22 | -2299 | -1238 | -1329 | -1316 | -1290 |
| 15 | -35 | -2331 | -1307 | -1360 | -1343 | -1311 |
| 16 | 19 | -2346 | -1439 | -1468 | -1465 | -1281 |
| 17 | 87 | -2361 | -1941 | -1577 | -1632 | -1131 |
| 18 | 207 | -2240 | -2198 | -1523 | -2056 | -711 |
| 19 | 184 | -2196 | -3168 | -1478 | -2001 | -663 |
| 20 | 225 | -2084 | -2928 | -1386 | -1893 | -561 |
| 21 | 205 | -1972 | -2863 | -1263 | -1734 | -458 |
| 22 | 187 | -2076 | -3014 | -1371 | -1906 | -562 |
| 23 | 217 | -2201 | -3139 | -1481 | -1999 | -669 |
| 24 | 207 | -2198 | -3632 | -1549 | -2316 | -506 |
| 25 | 610 | -1991 | -3726 | -1985 | -2636 | 23 |
| 26 | 355 | -1438 | -2968 | -1560 | -2146 | 451 |
| 27 | 287 | -1333 | -2805 | -1406 | -1976 | 541 |
| 28 | 117 | -1261 | -2798 | -1344 | -1926 | 571 |

Table 2: STRAIN GAGE READINGS-SPECIMEN T-7(10⁻⁶ in. per in.)

| Ld No. | Axial Load (kips) | Gage Nos. | | | | | | | |
|-----------|-------------------------|-----------|-------|--------|------|------|--------|-------|-------|
| | | 1 | 2 | 3 | 4 | 7 | 8 | 9 | 10 |
| 1 | 0 | 0 | 0 | 0 | 0 | 0 | 0 | 0 | 0 |
| 2 | 50 | -110 | -50 | -60 | -80 | -40 | -100 | -100 | -130 |
| 3 | 50 | -110 | -50 | -50 | -80 | -80 | -90 | -100 | -140 |
| 4 | 100 | -220 | -150 | -150 | -170 | -145 | -195 | -205 | -250 |
| 5 | 150 | -310 | -240 | -250 | -270 | -240 | -310 | -305 | -365 |
| 6 | 200 | -395 | -335 | -340 | -375 | -345 | -430 | -410 | -505 |
| 7 | 300 | -580 | -520 | -550 | -580 | -515 | -660 | -570 | -750 |
| 8 | 350 | -670 | -630 | -655 | -690 | -600 | -775 | -640 | -905 |
| 9 | 375 | -670 | -665 | -720 | -730 | -630 | -830 | -675 | -990 |
| 10 | 385 | -720 | -690 | -740 | -760 | -645 | -845 | -670 | -1020 |
| 11 | 389 | -700 | -700 | -780 | -760 | -660 | -875 | -675 | -1065 |
| 12 | 394 | -735 | -700 | -780 | -780 | -665 | -890 | -685 | -1095 |
| 13 | 403 | -725 | -720 | -800 | -780 | -670 | -900 | -675 | -1115 |
| 14 | 406 | -755 | -730 | -810 | -790 | -685 | -915 | -680 | -1140 |
| 15 | 411 | -765 | -750 | -825 | -795 | -690 | -925 | -670 | -1170 |
| 16 | 417 | -755 | -765 | -855 | -785 | -695 | -945 | -660 | -1200 |
| 17 | 425 | -780 | -780 | -865 | -805 | -705 | -970 | -645 | -1245 |
| 18 | 430 | -800 | -785 | -905 | -805 | -705 | -980 | -615 | -1285 |
| 19 | 436 | -810 | -780 | -935 | -810 | -710 | -995 | -600 | -1320 |
| 20 | 442 | -820 | -795 | -1000 | -790 | -710 | -1020 | -550 | -1370 |
| 21 | 447 | -835 | -820 | -1060 | -750 | -700 | -1050 | -460 | -1470 |
| 22 | 449 | -880 | -835 | -3990 | -50 | -660 | -1130 | -235 | -1675 |
| 23 | 443 | -860 | -960 | -7600 | 830 | -525 | -460 | 355 | -2680 |
| 24 | 418 | -735 | -1645 | -14760 | 3140 | -100 | -3130 | 11510 | -4120 |
| 25 | 382 | -440 | -2675 | -19380 | 5530 | 270 | -6205 | 2340 | -4745 |
| 26 | 349 | - | - | - | - | - | - | - | - |
| 27 | 299 | - | - | - | - | - | - | - | - |
| 28 | 200 | - | - | - | - | - | - | - | - |
| 29 | 298 | - | - | - | - | - | - | - | - |
| 30 | 348 | - | - | - | - | - | - | - | - |
| 31 | 382 | -4470 | -2680 | -19485 | 5625 | 290 | -6300 | 2405 | -4750 |
| 32 | 368 | -280 | -3155 | -20360 | 6305 | 450 | -7610 | 2620 | -4915 |
| 33 | 341 | -5 | -4705 | -21895 | 7740 | 710 | -10550 | 3050 | -5210 |
| 34 | 200 | 50 | -4155 | -21005 | 7185 | 600 | -9670 | 2590 | -4510 |
| 35 | 30 | 210 | -3390 | -19775 | 6485 | 540 | -8480 | 2070 | -3645 |

Table 2: STRAIN GAGE READINGS-SPECIMEN T-7 (Cont'd)(10⁻⁶ in. per in.)

| Ld No. | Gage Nos. | | | | | | | | | |
|-----------|-----------|--------|--------|-------|------|-------|------|-------|------|-------|
| | 13 | 14 | 15 | 16 | 19 | 20 | 21 | 22 | 23 | 24 |
| 1 | 0 | 0 | 0 | 0 | 0 | 0 | 0 | 0 | 0 | 0 |
| 2 | -110 | -130 | -140 | -150 | -110 | -140 | -55 | -110 | -65 | -205 |
| 3 | -120 | -130 | -140 | -150 | -140 | -140 | -57 | -72 | -25 | -155 |
| 4 | -205 | -245 | -250 | -250 | -225 | -235 | -155 | -230 | -215 | -275 |
| 5 | -300 | -360 | -360 | -360 | -320 | -350 | -260 | -240 | -260 | -325 |
| 6 | -385 | -460 | -470 | -465 | -405 | -450 | -315 | -405 | -385 | -495 |
| 7 | -555 | -680 | -700 | -655 | -575 | -650 | -500 | -575 | -560 | -700 |
| 8 | -655 | -780 | -830 | -750 | -680 | -755 | -590 | -680 | -685 | -775 |
| 9 | -725 | -835 | -915 | -800 | -760 | -815 | -535 | -730 | -695 | -825 |
| 10 | -750 | -855 | -945 | -810 | -780 | -825 | -525 | -770 | -770 | -885 |
| 11 | -775 | -870 | -975 | -820 | -800 | -850 | -525 | -800 | -795 | -915 |
| 12 | -795 | -885 | -995 | -825 | -810 | -860 | -545 | -840 | -815 | -930 |
| 13 | -810 | -895 | -1020 | -830 | -825 | -875 | -525 | -835 | -775 | -915 |
| 14 | -825 | -910 | -1040 | -825 | -825 | -885 | -520 | -850 | -785 | -935 |
| 15 | -835 | -915 | -1070 | -825 | -840 | -900 | -535 | -870 | -820 | -970 |
| 16 | -850 | -925 | -1095 | -825 | -845 | -905 | -540 | -870 | -805 | -995 |
| 17 | -870 | -940 | -1145 | -815 | -855 | -925 | -550 | -895 | -805 | -1025 |
| 18 | -890 | -960 | -1180 | -800 | -865 | -930 | -555 | -910 | -820 | -1065 |
| 19 | -900 | -965 | -1240 | -770 | -865 | -940 | -535 | -925 | -780 | -1090 |
| 20 | -920 | -970 | -1520 | -675 | -870 | -950 | -535 | -950 | -810 | -1140 |
| 21 | -950 | -1000 | -3030 | -270 | -860 | -975 | -530 | -1005 | -775 | -1220 |
| 22 | -985 | -1070 | -4635 | 190 | -830 | -1070 | -510 | -1070 | -645 | -1350 |
| 23 | -940 | -1390 | -6935 | 920 | -770 | -1280 | -315 | -1180 | -415 | -1365 |
| 24 | -705 | -3770 | -15855 | 4265 | -480 | -2430 | 50 | -1580 | -275 | -1305 |
| 25 | -370 | -7405 | -21285 | 7865 | -90 | -4915 | 335 | -1875 | -250 | -1060 |
| 26 | - | - | - | - | - | - | 315 | -1750 | -225 | -980 |
| 27 | - | - | - | - | - | - | 275 | -1570 | -240 | -860 |
| 28 | - | - | - | - | - | - | 240 | -1230 | -190 | -615 |
| 29 | - | - | - | - | - | - | 275 | -1540 | -225 | -840 |
| 30 | - | - | - | - | - | - | 325 | -1715 | -215 | -945 |
| 31 | -340 | -7530 | -21450 | 8005 | -70 | -5040 | 375 | -1865 | -225 | -1030 |
| 32 | -205 | -8990 | -22500 | 9030 | 90 | -6370 | 505 | -1950 | -255 | -935 |
| 33 | 70 | -12090 | -24165 | 10870 | 435 | -9450 | 650 | -1980 | -305 | -765 |
| 34 | 35 | -11210 | -23305 | 10285 | 340 | -8650 | 470 | -1445 | -235 | -465 |
| 35 | 60 | -10045 | -22105 | 9545 | 335 | -7605 | 395 | -825 | -120 | -95 |

Table 2: STRAIN GAGE READINGS-SPECIMEN T-7 (Cont'd)(10⁻⁶ in. per in.)

| Ld No. | Gage Nos. | | | | | | | | | |
|-----------|-----------|-------|-------|------|------|-------|------|-------|-------|-------|
| | 27 | 28 | 29 | 30 | 33 | 34 | 35 | 36 | 39 | 40 |
| 1 | 0 | 0 | 0 | 0 | 0 | 0 | 0 | 0 | 0 | 0 |
| 2 | -110 | -90 | -160 | -155 | -130 | -110 | -130 | -145 | -100 | -175 |
| 3 | -145 | -130 | -210 | -175 | -140 | -120 | -140 | -140 | -120 | -180 |
| 4 | -215 | -240 | -350 | -285 | -210 | -255 | -255 | -240 | -220 | -285 |
| 5 | -325 | -360 | -480 | -390 | -340 | -390 | -375 | -375 | -305 | -400 |
| 6 | -455 | -475 | -600 | -505 | -415 | -490 | -470 | -470 | -380 | -495 |
| 7 | -605 | -660 | -820 | -685 | -550 | -675 | -685 | -700 | -560 | -710 |
| 8 | -665 | -800 | -940 | -760 | -610 | -825 | -780 | -810 | -680 | -805 |
| 9 | -735 | -855 | -1050 | -795 | -670 | -840 | -810 | -880 | -820 | -855 |
| 10 | -745 | -865 | -1070 | -775 | -710 | -865 | -820 | -800 | -850 | -860 |
| 11 | -770 | -890 | -1130 | -785 | -730 | -870 | -825 | -930 | -880 | -870 |
| 12 | -745 | -890 | -1145 | -785 | -745 | -890 | -835 | -950 | -915 | -895 |
| 13 | -790 | -895 | -1145 | -775 | -740 | -900 | -830 | -960 | -920 | -905 |
| 14 | -775 | -945 | -1180 | -785 | -780 | -940 | -830 | -990 | -935 | -920 |
| 15 | -850 | -950 | -1220 | -800 | -790 | -935 | -850 | -1015 | -955 | -935 |
| 16 | -845 | -950 | -1250 | -795 | -780 | -955 | -830 | -1050 | -960 | -945 |
| 17 | -925 | -980 | -1310 | -765 | -800 | -980 | -815 | -1085 | -985 | -970 |
| 18 | -940 | -1020 | -1380 | -755 | -805 | -1000 | -800 | -1130 | -1010 | -990 |
| 19 | -960 | -1000 | -1415 | -730 | -790 | -1010 | -755 | -1160 | -1010 | -1010 |
| 20 | -995 | -1040 | -1515 | -675 | -780 | -1020 | -680 | -1105 | -1020 | -1045 |
| 21 | -925 | -1090 | -1725 | -575 | -765 | -1050 | -605 | -1265 | -1045 | -1090 |
| 22 | -1070 | -1150 | -2790 | -135 | -720 | -1105 | -445 | -1350 | -1045 | -1150 |
| 23 | -1050 | -1220 | -4230 | 435 | -565 | -1200 | -240 | -1410 | -960 | -1350 |
| 24 | -870 | -1425 | -5910 | 1115 | -290 | -1420 | 50 | -1500 | -760 | -2010 |
| 25 | -630 | -1425 | -5670 | 1065 | -45 | -1370 | -70 | -1125 | -570 | -2080 |
| 26 | -605 | -1300 | -5550 | 995 | -60 | -1250 | -75 | -1045 | -565 | -1950 |
| 27 | -590 | -1140 | -5350 | 930 | -85 | -1090 | -90 | -920 | -540 | -1755 |
| 28 | -495 | -790 | -4900 | 825 | -100 | -775 | -115 | -670 | -470 | -1400 |
| 29 | -575 | -1100 | -5280 | 935 | -80 | -1075 | -75 | -910 | -530 | -1735 |
| 30 | -580 | -1285 | -5500 | 1005 | -55 | -1235 | -60 | -1030 | -545 | -1930 |
| 31 | -605 | -1430 | -5655 | 1055 | -20 | -1360 | -50 | -1095 | -545 | -2060 |
| 32 | -535 | -1415 | -5570 | 1030 | 55 | -1335 | -90 | -980 | -490 | -2025 |
| 33 | -350 | -1420 | -5430 | 970 | 205 | -1295 | -135 | -840 | -360 | -1985 |
| 34 | -355 | -880 | -4880 | 830 | 65 | -820 | -160 | -510 | -380 | -1430 |
| 35 | -215 | -315 | -4190 | 735 | 30 | -325 | -100 | -125 | -260 | -830 |

Table 2: STRAIN GAGE READINGS-SPECIMEN T-7 (Cont'd)(10⁻⁶ in. per in.)

| Ld No. | Gage Nos. | | | | | | | | | |
|-----------|-----------|-------|------|-------|-------|-------|-------|------|-------|------|
| | 41 | 42 | 43 | 44 | 47 | 48 | 57 | 58 | 59 | 60 |
| 1 | 0 | 0 | 0 | 0 | 0 | 0 | 0 | 0 | 0 | 0 |
| 2 | -80 | -90 | -80 | -100 | -120 | -100 | -130 | -130 | -130 | -150 |
| 3 | -90 | -90 | -90 | -100 | -130 | -120 | -140 | -130 | -130 | -175 |
| 4 | -190 | -190 | -170 | -190 | -230 | -210 | -245 | -235 | -245 | -280 |
| 5 | -295 | -300 | -270 | -300 | -325 | -310 | -370 | -345 | -365 | -390 |
| 6 | -390 | -410 | -375 | -410 | -415 | -420 | -480 | -445 | -475 | -460 |
| 7 | -545 | -620 | -545 | -640 | -590 | -640 | -730 | -640 | -710 | -685 |
| 8 | -610 | -735 | -625 | -780 | -710 | -745 | -870 | -730 | -825 | -775 |
| 9 | -665 | -790 | -655 | -840 | -850 | -795 | -955 | -750 | -925 | -800 |
| 10 | -690 | -815 | -675 | -870 | -895 | -815 | -965 | -760 | -940 | -815 |
| 11 | -705 | -835 | -685 | -895 | -970 | -830 | -1010 | -760 | -970 | -840 |
| 12 | -725 | -845 | -685 | -915 | -940 | -845 | -1040 | -770 | -1010 | -850 |
| 13 | -735 | -860 | -685 | -930 | -970 | -855 | -1050 | -765 | -1025 | -840 |
| 14 | -750 | -875 | -695 | -955 | -985 | -870 | -1085 | -770 | -1050 | -855 |
| 15 | -765 | -890 | -690 | -975 | -1005 | -880 | -1115 | -770 | -1080 | -865 |
| 16 | -780 | -900 | -685 | -995 | -1025 | -895 | -1140 | -765 | -1095 | -855 |
| 17 | -805 | -925 | -680 | -1035 | -1040 | -915 | -1190 | -745 | -1150 | -845 |
| 18 | -810 | -940 | -670 | -1070 | -1055 | -930 | -1235 | -740 | -1200 | -850 |
| 19 | -810 | -960 | -630 | -1135 | -1090 | -960 | -1280 | -710 | -1235 | -830 |
| 20 | -800 | -990 | -555 | -1220 | -1140 | -1030 | -1365 | -655 | -1315 | -800 |
| 21 | -790 | -1010 | -475 | -1310 | -1180 | -1080 | -1520 | -560 | -1490 | -715 |
| 22 | -770 | -1040 | -340 | -1390 | -1200 | -1120 | -2750 | -110 | -2760 | -355 |
| 23 | -650 | -1190 | -85 | -1550 | -1190 | -1230 | -4075 | 370 | -4000 | -15 |
| 24 | -455 | -1310 | 245 | -1810 | -1060 | -1310 | -5920 | 955 | -8260 | 175 |
| 25 | -320 | -1215 | 240 | -1675 | -890 | -1190 | -5715 | 910 | -6070 | 145 |
| 26 | - | - | - | - | - | - | -5550 | 870 | -5910 | 155 |
| 27 | - | - | - | - | - | - | -5345 | 830 | -5675 | 165 |
| 28 | - | - | - | - | - | - | -4885 | 770 | -5210 | 235 |
| 29 | - | - | - | - | - | - | -5300 | 830 | -5630 | 185 |
| 30 | - | - | - | - | - | - | -5530 | 880 | -5865 | 175 |
| 31 | -320 | -1210 | 240 | -1665 | -885 | -1175 | -5670 | 920 | -6030 | 165 |
| 32 | -270 | -1200 | 240 | -1635 | -835 | -1150 | -5600 | 890 | -5970 | 160 |
| 33 | -1165 | -1140 | 230 | -1565 | -720 | -1105 | -5470 | 840 | -5850 | 105 |
| 34 | -155 | -730 | 80 | -1010 | -535 | -710 | -4890 | 760 | -5225 | 205 |
| 35 | 20 | -315 | 150 | -490 | -260 | -330 | -4170 | 720 | -4480 | 335 |

Table 2: STRAIN GAGE READINGS-SPECIMEN T-7 (Cont'd)(10⁻⁶ in. per in.)

| Ld No. | Gage Nos. | | | |
|-----------|-----------|------|-------|-------|
| | 61 | 62 | 111 | 112 |
| 1 | - | 0 | 0 | 0 |
| 2 | - | -135 | -110 | -120 |
| 3 | - | -150 | -120 | -120 |
| 4 | - | -260 | -215 | -220 |
| 5 | - | -375 | -315 | -340 |
| 6 | - | -460 | -420 | -455 |
| 7 | - | -680 | -640 | -680 |
| 8 | - | -770 | -730 | -805 |
| 9 | - | -825 | -800 | -875 |
| 10 | - | -830 | -815 | -895 |
| 11 | - | -845 | -825 | -905 |
| 12 | - | -850 | -835 | -930 |
| 13 | - | -855 | -845 | -945 |
| 14 | - | -870 | -855 | -960 |
| 15 | - | -870 | -860 | -980 |
| 16 | - | -870 | -860 | -990 |
| 17 | - | -870 | -870 | -1010 |
| 18 | - | -880 | -875 | -1025 |
| 19 | - | -860 | -870 | -1040 |
| 20 | - | -835 | -860 | -1060 |
| 21 | - | -815 | -850 | -1060 |
| 22 | - | -625 | -780 | -1010 |
| 23 | - | -585 | -710 | -805 |
| 24 | - | -650 | -800 | -190 |
| 25 | - | -650 | -1020 | 335 |
| 26 | - | -600 | - | - |
| 27 | - | -490 | - | - |
| 28 | - | -290 | - | - |
| 29 | - | -465 | - | - |
| 30 | - | -565 | - | - |
| 31 | - | -635 | -1035 | 345 |
| 32 | - | -635 | -1120 | 500 |
| 33 | - | -660 | -1255 | 760 |
| 34 | - | -350 | -1155 | 720 |
| 35 | - | -20 | -940 | 660 |

Table 3: STRAIN GAGE READINGS-SPECIMEN T-8(10⁻⁶ in. per in.)

| Ld No. | Axial Load (kips) | Gage Nos. | | | | | | | |
|-----------|-------------------------|-----------|-------|------|-------|------|-------|-------|-------|
| | | 1 | 2 | 3 | 4 | 7 | 8 | 9 | 10 |
| 1 | 0 | 0 | 0 | 0 | 0 | 0 | 0 | 0 | 0 |
| 2 | 20 | -20 | -75 | -75 | -60 | -60 | -70 | -50 | -60 |
| 3 | 20 | -30 | -80 | -75 | -55 | -70 | -65 | -50 | -55 |
| 4 | 50 | -95 | -160 | -150 | -135 | -95 | -140 | -110 | -130 |
| 5 | 100 | -200 | -265 | -245 | -260 | -180 | -250 | -200 | -245 |
| 6 | 150 | -260 | -365 | -335 | -365 | -280 | -365 | -300 | -365 |
| 7 | 200 | -360 | -465 | -440 | -480 | -365 | -470 | -400 | -495 |
| 8 | 250 | -420 | -565 | -510 | -585 | -430 | -570 | -500 | -625 |
| 9 | 300 | -520 | -665 | -615 | -700 | -510 | -690 | -590 | -805 |
| 10 | 350 | -620 | -785 | -705 | -855 | -590 | -810 | -750 | -935 |
| 11 | 375 | -655 | -825 | -750 | -925 | -620 | -870 | -790 | -995 |
| 12 | 400 | -710 | -960 | -845 | -1005 | -670 | -940 | -850 | -1050 |
| 13 | 425 | -740 | -1015 | -845 | -1155 | -680 | -1005 | -905 | -1090 |
| 14 | 450 | -765 | -1075 | -840 | -1265 | -720 | -1075 | -990 | -1115 |
| 15 | 460 | -790 | -1105 | -815 | -1315 | -745 | -1105 | -1030 | -1115 |
| 16 | 470 | -810 | -1135 | -800 | -1355 | -740 | -1130 | -1075 | -1105 |
| 17 | 480 | -810 | -1150 | -705 | -1425 | -770 | -1155 | -1130 | -1085 |
| 18 | 485 | -790 | -1195 | -630 | -1500 | -780 | -1290 | -920 | -1085 |
| 19 | 431 | -730 | -1095 | -555 | -1305 | -700 | -1090 | -640 | -1110 |
| 20 | 450 | -740 | -1145 | -535 | -1390 | -730 | -1160 | -760 | -1110 |
| 21 | 485 | -775 | -1260 | -465 | -1560 | -785 | -1315 | -870 | -1095 |
| 22 | 490 | -785 | -1285 | -395 | -1700 | -780 | -1320 | -870 | -1065 |
| 23 | 360 | -320 | -1230 | 185 | -1965 | -455 | -900 | -1220 | -195 |
| 24 | 340 | -260 | -1210 | 165 | -1875 | -390 | -890 | -1210 | -155 |
| 25 | 323 | -215 | -1190 | 145 | -1805 | -330 | -880 | -1180 | -140 |
| 26 | 200 | -230 | -685 | 70 | -1425 | -265 | -475 | -790 | -105 |
| 27 | 100 | -215 | -390 | 55 | -1130 | -200 | -200 | -450 | 5 |
| 28 | 200 | -240 | -685 | 70 | -1400 | -280 | -470 | -780 | -100 |
| 29 | 325 | -210 | -1185 | 150 | -1785 | -330 | -870 | -1180 | -135 |
| 30 | 308 | -155 | -1175 | 105 | -1715 | -270 | -865 | -1145 | -115 |
| 31 | 294 | -90 | -1145 | 85 | -1635 | -210 | -850 | -1110 | -105 |
| 32 | 200 | -144 | -715 | 35 | -1345 | -205 | -520 | -805 | -75 |
| 33 | 20 | -150 | -165 | 15 | -805 | -135 | -20 | -295 | -85 |

Table 3: STRAIN GAGE READINGS-SPECIMEN T-8 (Cont'd)(10⁻⁶ in. per in.)

| Ld No. | Gage Nos. | | | | | | | | | |
|-----------|-----------|-------|-------|-------|------|-------|-------|--------|-------|------|
| | 13 | 14 | 15 | 16 | 19 | 20 | 21 | 22 | 23 | 24 |
| 1 | 0 | 0 | 0 | 0 | 0 | 0 | 0 | 0 | 0 | 0 |
| 2 | -60 | -50 | -60 | -30 | -10 | -20 | -45 | -65 | -60 | -65 |
| 3 | -50 | -40 | -60 | -40 | -30 | -30 | -55 | -65 | -60 | -75 |
| 4 | -105 | -105 | -110 | -90 | -75 | -60 | -130 | -160 | -145 | -160 |
| 5 | -200 | -260 | -210 | -190 | -175 | -155 | -225 | -280 | -260 | -265 |
| 6 | -270 | -370 | -310 | -290 | -270 | -260 | -310 | -390 | -375 | -380 |
| 7 | -370 | -490 | -425 | -390 | -365 | -360 | -385 | -490 | -490 | -485 |
| 8 | -455 | -590 | -535 | -495 | -520 | -460 | -460 | -585 | -600 | -580 |
| 9 | -540 | -710 | -650 | -590 | -610 | -555 | -550 | -700 | -730 | -685 |
| 10 | -610 | -820 | -750 | -685 | -690 | -625 | -640 | -820 | -875 | -785 |
| 11 | -635 | -870 | -805 | -735 | -730 | -680 | -690 | -870 | -945 | -825 |
| 12 | -680 | -930 | -855 | -780 | -780 | -725 | -740 | -920 | -1035 | -855 |
| 13 | -695 | -985 | -910 | -840 | -830 | -770 | -800 | -970 | -1130 | -865 |
| 14 | -735 | -1050 | -960 | -910 | -880 | -825 | -870 | -1020 | -1265 | -850 |
| 15 | -740 | -1070 | -980 | -940 | -900 | -850 | -900 | -1040 | -1330 | -830 |
| 16 | -745 | -1100 | -990 | -970 | -925 | -865 | -940 | -1060 | -1410 | -800 |
| 17 | -745 | -1120 | -995 | -1000 | -940 | -890 | -980 | -1080 | -1505 | -755 |
| 18 | -730 | -1195 | -990 | -1085 | -940 | -940 | -1010 | -1110 | | -685 |
| 19 | -670 | -1075 | -920 | -930 | -860 | -820 | -890 | -1045 | -1005 | -820 |
| 20 | -690 | -1130 | -965 | -980 | -890 | -870 | -950 | -1110 | -1140 | -770 |
| 21 | -730 | -1225 | -1000 | -1100 | -950 | -950 | -1040 | -1200 | -1330 | -675 |
| 22 | -725 | -1240 | -975 | -1150 | -950 | -980 | -1050 | -1230 | -1350 | -645 |
| 23 | -320 | -990 | -205 | -1540 | -395 | -1045 | -120 | -6200 | -935 | -15 |
| 24 | -280 | -950 | -150 | -1520 | -330 | -1020 | 80 | -7080 | -920 | 80 |
| 25 | -240 | -930 | -110 | -1525 | -260 | -970 | 250 | -7740 | -910 | 135 |
| 26 | -250 | -555 | -150 | -1010 | -210 | -635 | 225 | -7145 | -440 | -200 |
| 27 | -180 | -310 | -100 | -685 | -110 | -390 | 235 | -6695 | -90 | -420 |
| 28 | -250 | -570 | -155 | -1000 | -210 | -640 | 210 | -7090 | -430 | -205 |
| 29 | -240 | -920 | -95 | -1510 | -260 | -970 | 265 | -7785 | -885 | 135 |
| 30 | -200 | -890 | -50 | -1500 | -190 | -950 | 445 | -8490 | -865 | 195 |
| 31 | -150 | -1865 | -15 | -1500 | -125 | -905 | 645 | -9350 | -850 | 240 |
| 32 | -195 | -585 | -60 | -1100 | -120 | -640 | 545 | -8820 | -530 | -30 |
| 33 | -125 | -65 | 25 | -505 | 10 | -150 | 470 | -17820 | 90 | -445 |

Table 3: STRAIN GAGE READINGS-SPECIMEN T-8 (Cont'd)(10⁻⁶ in. per in.)

| Ld No. | Gage Nos. | | | | | | | | | |
|-----------|-----------|------|------|--------|------|--------|------|------|------|--------|
| | 25 | 26 | 27 | 28 | 29 | 30 | 31 | 32 | 33 | 34 |
| 1 | 0 | 0 | 0 | 0 | 0 | 0 | 0 | 0 | 0 | 0 |
| 2 | -25 | 20 | -45 | -40 | -35 | -35 | 10 | -15 | -5 | -30 |
| 3 | 25 | 10 | -45 | -40 | -35 | -40 | 10 | -15 | -10 | -30 |
| 4 | 55 | 25 | -100 | -130 | -95 | -95 | 20 | -15 | -50 | -85 |
| 5 | 85 | 45 | -180 | -220 | -195 | -210 | 50 | -5 | -140 | -190 |
| 6 | 120 | 70 | -270 | -340 | -295 | -320 | 95 | 0 | -230 | -305 |
| 7 | 160 | 90 | -350 | -455 | -400 | -440 | 140 | 10 | -320 | -420 |
| 8 | 195 | 110 | -425 | -570 | -505 | -555 | 190 | 5 | -415 | -540 |
| 9 | 215 | 145 | -510 | -690 | -605 | -670 | 250 | 5 | -500 | -650 |
| 10 | 235 | 185 | -595 | -805 | -705 | -810 | 325 | -15 | -575 | -765 |
| 11 | 235 | 210 | -625 | -860 | -740 | -875 | 370 | -30 | -615 | -830 |
| 12 | 220 | 250 | -655 | -915 | -775 | -950 | 430 | -60 | -650 | -890 |
| 13 | 195 | 310 | -675 | -980 | -795 | -1035 | 500 | -105 | -680 | -950 |
| 14 | 135 | 395 | -685 | -1040 | -795 | -1150 | 610 | -175 | -710 | -1030 |
| 15 | 95 | 450 | -680 | -1065 | -780 | -1200 | 670 | -220 | -715 | -1050 |
| 16 | 45 | 510 | -675 | -1090 | -755 | -1260 | 740 | -265 | -730 | -1090 |
| 17 | -15 | 590 | -655 | -1120 | -725 | -1330 | 810 | -335 | -740 | -1115 |
| 18 | -185 | 770 | -605 | -1200 | -565 | -1420 | 930 | -490 | -730 | -1165 |
| 19 | -25 | 550 | -595 | -1060 | -615 | -1145 | 670 | -305 | -650 | -990 |
| 20 | -90 | 640 | -600 | -1225 | -595 | -1260 | 785 | -385 | -685 | -1070 |
| 21 | -185 | 775 | -600 | -1220 | -525 | -1415 | 940 | -500 | -730 | -1170 |
| 22 | -240 | 855 | -565 | -1300 | -70 | -3340 | 1150 | -600 | -720 | -1220 |
| 23 | -675 | 1020 | 555 | -6990 | 1980 | -10910 | 1555 | -665 | 340 | -6385 |
| 24 | -745 | 1030 | 745 | -8180 | 2235 | -11450 | 1540 | -655 | 590 | -7840 |
| 25 | -795 | 1050 | 905 | -9215 | 2495 | -12020 | 1535 | -635 | 790 | -9100 |
| 26 | -815 | 1045 | 705 | -8465 | 2075 | -11295 | 1390 | -755 | 645 | -8340 |
| 27 | -850 | 1025 | 620 | -7870 | 1745 | -10675 | 1265 | -835 | 595 | -7720 |
| 28 | -815 | 1040 | 695 | -8390 | 2045 | -11240 | 1380 | -755 | 630 | -8255 |
| 29 | -790 | 1050 | 915 | -9290 | 2505 | 12060 | 1530 | -630 | 800 | -9180 |
| 30 | -845 | 1070 | 1095 | -10500 | 2855 | 12840 | 1520 | -615 | 1000 | -10540 |
| 31 | -895 | 1100 | 1275 | -11980 | 3365 | 13965 | 1530 | -575 | 1230 | -12040 |
| 32 | -915 | 1105 | 1025 | -11310 | 3010 | 13400 | 1430 | -680 | 1020 | -11370 |
| 33 | -975 | 1100 | 730 | -9995 | 2335 | 12200 | 1235 | -860 | 785 | -9960 |

Table 3: STRAIN GAGE READINGS-SPECIMEN T-8 (Cont'd)(10⁻⁶ in. per in.)

| Ld No. | Gage Nos. | | | | | | | | | |
|-----------|-----------|-------|----|------|------|-------|-------|-------|-------|------|
| | 35 | 36 | 37 | 38 | 39 | 40 | 41 | 42 | 43 | 44 |
| 1 | 0 | 0 | 0 | 0 | 0 | 0 | 0 | 0 | 0 | 0 |
| 2 | -20 | -20 | - | 9 | 10 | -20 | -50 | -30 | -30 | -20 |
| 3 | -25 | -20 | - | 9 | -10 | -20 | -55 | -45 | -30 | -10 |
| 4 | -70 | -80 | - | 19 | -60 | -60 | -170 | -110 | -80 | -60 |
| 5 | -165 | -190 | - | 39 | -155 | -160 | -240 | -205 | -160 | -210 |
| 6 | -265 | -310 | - | 54 | -255 | -265 | -360 | -305 | -275 | -290 |
| 7 | -365 | -430 | - | 79 | -360 | -370 | -460 | -410 | -380 | -365 |
| 8 | -470 | -560 | - | 94 | -460 | -480 | -625 | -495 | -500 | -440 |
| 9 | -560 | -675 | - | 109 | -550 | -575 | -740 | -620 | -610 | -535 |
| 10 | -650 | -805 | - | 124 | -630 | -670 | -875 | -730 | -730 | -610 |
| 11 | -690 | -855 | - | 134 | -670 | -710 | -940 | -785 | -800 | -650 |
| 12 | -740 | -920 | - | 139 | -710 | -760 | -1010 | -840 | -880 | -670 |
| 13 | -785 | -980 | - | 154 | -755 | -810 | -1065 | -905 | -965 | -710 |
| 14 | -850 | -1045 | - | 169 | -790 | -860 | -1135 | -960 | -1055 | -720 |
| 15 | -865 | -1070 | - | 184 | -815 | -880 | -1160 | -1000 | -1080 | -710 |
| 16 | -900 | -1090 | - | 209 | -830 | -900 | -1190 | -1035 | -1125 | -710 |
| 17 | -930 | -1110 | - | 224 | -855 | -925 | -1195 | -1065 | -1180 | -700 |
| 18 | -1000 | -1115 | - | 269 | -840 | -960 | -1230 | -1070 | -1220 | -650 |
| 19 | -845 | -980 | - | 189 | -745 | -820 | -1095 | -930 | -1040 | -670 |
| 20 | -915 | -1045 | - | 219 | -775 | -880 | -1160 | -990 | -1110 | -690 |
| 21 | -1010 | -1115 | - | 264 | -830 | -960 | -1240 | -1080 | -1230 | -670 |
| 22 | -1070 | -1110 | - | 299 | -830 | -980 | -1250 | -1070 | -1240 | -660 |
| 23 | -940 | -365 | - | 114 | -125 | -1240 | -785 | -760 | -710 | -640 |
| 24 | -1000 | -140 | - | 39 | 15 | -1280 | -695 | -740 | -620 | -650 |
| 25 | -1020 | 0 | - | -21 | 135 | -1315 | -620 | -730 | -550 | -720 |
| 26 | -730 | -200 | - | -56 | 65 | -820 | -450 | -415 | -350 | -480 |
| 27 | -480 | -310 | - | -91 | 75 | -430 | -300 | -180 | -200 | -320 |
| 28 | -730 | -200 | - | -61 | 60 | -810 | -435 | -420 | -360 | -490 |
| 29 | -1035 | 10 | - | -26 | 145 | -1320 | -610 | -730 | -550 | -710 |
| 30 | -1055 | 140 | - | -76 | 250 | -1365 | -470 | -715 | -480 | -760 |
| 31 | -1090 | 260 | - | -131 | 365 | -1415 | -385 | -705 | -405 | -815 |
| 32 | -875 | 85 | - | -171 | 230 | -980 | -345 | -455 | -270 | -610 |
| 33 | -435 | -190 | - | -246 | 150 | -170 | -160 | -40 | -10 | -250 |

Table 3: STRAIN GAGE READINGS-SPECIMEN T-8(Cont'd)(10⁻⁶ in. per in.)

| Ld. No. | Gage Nos. | | | |
|------------|-----------|------|------|-------|
| | 47 | 48 | 59 | 60 |
| 1 | 0 | 0 | 0 | 0 |
| 2 | -25 | -10 | -25 | -60 |
| 3 | -30 | -15 | -30 | -50 |
| 4 | -60 | -45 | -90 | -95 |
| 5 | -170 | -140 | -180 | -205 |
| 6 | -275 | -235 | -285 | -315 |
| 7 | -400 | -335 | -375 | -425 |
| 8 | -580 | -430 | -495 | -535 |
| 9 | -715 | -520 | -605 | -655 |
| 10 | -840 | -625 | -760 | -775 |
| 11 | -895 | -675 | -795 | -845 |
| 12 | -960 | -720 | -855 | -915 |
| 13 | -1020 | -790 | -885 | -990 |
| 14 | -1075 | -840 | -920 | -1085 |
| 15 | -1100 | -860 | -920 | -1135 |
| 16 | -1120 | -890 | -920 | -1245 |
| 17 | -1140 | -915 | -910 | -1280 |
| 18 | -1145 | -930 | -880 | -1355 |
| 19 | -1020 | -825 | -845 | -1090 |
| 20 | -1065 | -880 | -860 | -1235 |
| 21 | -1150 | -950 | -880 | -1380 |
| 22 | -1150 | -980 | -770 | -1735 |
| 23 | -530 | -820 | -970 | -5065 |
| 24 | -380 | -810 | -910 | -5240 |
| 25 | -325 | -800 | -840 | -5455 |
| 26 | -195 | -490 | -940 | -4805 |
| 27 | -55 | -260 | -980 | -4335 |
| 28 | -190 | -485 | -950 | -4775 |
| 29 | -315 | -790 | -845 | -5455 |
| 30 | -250 | -770 | -765 | -5815 |
| 31 | -170 | -730 | -590 | -6455 |
| 32 | -125 | -495 | -700 | -6015 |
| 33 | 65 | -70 | -965 | -5020 |

Table 4: STRAIN GAGE READINGS-SPECIMEN T-9(10⁻⁶ in. per in.)

| Ld. No. | Axial Load (kips) | Gage Nos. | | | | | | | |
|------------|-------------------------|-----------|------|------|------|------|-------|-----|-------|
| | | 1 | 2 | 3 | 4 | 7 | 8 | 9 | 10 |
| 1 | 0 | 0 | 0 | 0 | 0 | 0 | 0 | 0 | 0 |
| 2 | 20 | 90 | -65 | -75 | -55 | -30 | -50 | 10 | -60 |
| 3 | 20 | -30 | -50 | -75 | -60 | -50 | -60 | 0 | -60 |
| 4 | 50 | -120 | -140 | -150 | -135 | -110 | -130 | 30 | -120 |
| 5 | 100 | -210 | -240 | -240 | -240 | -185 | -225 | 55 | -240 |
| 6 | 150 | -285 | -360 | -345 | -350 | -270 | -340 | 80 | -365 |
| 7 | 200 | -370 | -440 | -445 | -520 | -380 | -455 | 120 | -490 |
| 8 | 250 | -435 | -540 | -525 | -620 | -460 | -550 | 150 | -610 |
| 9 | 300 | -530 | -635 | -615 | -730 | -560 | -670 | 220 | -770 |
| 10 | 350 | -610 | -720 | -705 | -835 | -635 | -780 | 270 | -890 |
| 11 | 375 | -630 | -770 | -755 | -900 | -690 | -905 | 315 | -980 |
| 12 | 400 | -670 | -800 | -830 | -940 | -715 | -965 | 390 | -1070 |
| 13 | 410 | -695 | -800 | -755 | -945 | -730 | -960 | 420 | -1110 |
| 14 | 420 | -685 | -800 | -815 | -920 | -710 | -1020 | 380 | -1140 |
| 15 | 380 | -560 | -720 | -750 | -840 | -590 | -960 | 320 | -1060 |
| 16 | 370 | -550 | -710 | -730 | -805 | -575 | -900 | 340 | -980 |
| 17 | 350 | -520 | -660 | -665 | -770 | -550 | -880 | 320 | -925 |
| 18 | 300 | -470 | -540 | -565 | -655 | -485 | -700 | 285 | -740 |
| 19 | 250 | -410 | -440 | -465 | -545 | -390 | -570 | 250 | -590 |
| 20 | 200 | -350 | -320 | -385 | -385 | -320 | -460 | 200 | -450 |
| 21 | 150 | -275 | -250 | -275 | -290 | -230 | -355 | 160 | -310 |
| 22 | 100 | -195 | -160 | -195 | -190 | -150 | -240 | 120 | -165 |
| 23 | 50 | -140 | -60 | -105 | -90 | -70 | -140 | 70 | -50 |
| 24 | 20 | -100 | -25 | -50 | -30 | -20 | -85 | 50 | 25 |
| 25 | 0 | -135 | 0 | --25 | 0 | 0 | -30 | 45 | 70 |

Table 4: STRAIN GAGE READINGS-SPECIMEN T-9 (Cont'd)(10⁻⁶ in. per in.)

| Ld No. | Gage Nos. | | | | | | | | | |
|-----------|-----------|-------|-------|------|------|------|------|------|------|------|
| | 13 | 14 | 15 | 16 | 19 | 20 | 21 | 22 | 23 | 24 |
| 1 | 0 | 0 | 0 | 0 | 0 | 0 | 0 | 0 | 0 | 0 |
| 2 | -20 | -50 | -50 | -35 | 0 | -40 | -25 | -60 | -50 | -55 |
| 3 | -50 | -60 | -50 | -35 | -60 | -30 | -50 | -45 | -50 | -35 |
| 4 | -110 | -110 | -120 | -95 | -120 | -105 | -120 | -135 | -120 | -115 |
| 5 | -180 | -220 | -200 | -210 | -210 | -195 | -220 | -240 | -230 | -220 |
| 6 | -290 | -330 | -320 | -305 | -310 | -290 | -320 | -345 | -345 | -325 |
| 7 | -360 | -430 | -395 | -405 | -410 | -440 | -415 | -450 | -450 | -435 |
| 8 | -450 | -540 | -300 | -515 | -500 | -550 | -500 | -545 | -560 | -530 |
| 9 | -530 | -665 | -590 | -615 | -580 | -630 | -605 | -650 | -670 | -635 |
| 10 | -610 | -770 | -700 | -715 | -650 | -730 | -720 | -745 | -785 | -725 |
| 11 | -655 | -830 | -755 | -765 | -750 | -785 | -790 | -795 | -840 | -745 |
| 12 | -680 | -900 | -820 | -855 | -765 | -860 | -865 | -850 | -870 | -725 |
| 13 | -680 | -945 | -810 | -885 | -800 | -890 | -900 | -860 | -825 | -720 |
| 14 | -680 | -1010 | -990 | -855 | -780 | -950 | -905 | -895 | -680 | -800 |
| 15 | -540 | -915 | -1000 | -665 | -690 | -955 | -755 | -900 | -425 | -815 |
| 16 | -520 | -890 | -920 | -655 | -620 | -910 | -740 | -855 | -400 | -775 |
| 17 | -490 | -840 | -880 | -655 | -595 | -870 | -705 | -805 | -380 | -740 |
| 18 | -430 | -730 | -750 | -595 | -525 | -770 | -640 | -670 | -315 | -635 |
| 19 | -360 | -615 | -620 | -515 | -450 | -660 | -560 | -545 | -245 | -530 |
| 20 | -290 | -510 | -510 | -425 | -375 | -560 | -475 | -430 | -170 | -430 |
| 21 | -200 | -400 | -405 | -335 | -300 | -450 | -395 | -320 | -100 | -325 |
| 22 | -130 | -280 | -280 | -240 | -215 | -335 | -310 | -215 | -20 | -225 |
| 23 | -50 | -165 | -170 | -145 | -60 | -160 | -230 | -110 | 55 | -115 |
| 24 | 0 | -95 | -105 | -60 | -40 | -80 | -195 | -60 | 100 | -65 |
| 25 | 60 | -45 | -40 | -5 | -10 | -50 | -175 | -40 | 125 | -35 |

Table 4: STRAIN GAGE READINGS-SPECIMEN T-9(Cont'd)(10⁻⁶ in. per in.)

| Ld No. | Gage Nos. | | | | | | | | | |
|-----------|-----------|------|------|-------|-------|------|-----|-----|------|-------|
| | 25 | 26 | 27 | 28 | 29 | 30 | 31 | 32 | 33 | 34 |
| 1 | 0 | 0 | 0 | 0 | 0 | 0 | 0 | 0 | 0 | 0 |
| 2 | 25 | -40 | -30 | -50 | -50 | -35 | 5 | 10 | -5 | -35 |
| 3 | 220 | -40 | -55 | -50 | -45 | -40 | 0 | 10 | -30 | -35 |
| 4 | 35 | -100 | -115 | -120 | -120 | -85 | 10 | 20 | -75 | -95 |
| 5 | 55 | -195 | -215 | -215 | -255 | -170 | 25 | 45 | -165 | -205 |
| 6 | 80 | -295 | -315 | -330 | -395 | -250 | 40 | 75 | -265 | -315 |
| 7 | 95 | -395 | -415 | -440 | -545 | -325 | 55 | 110 | -355 | -430 |
| 8 | 110 | -485 | -515 | -545 | -695 | -380 | 70 | 150 | -450 | -545 |
| 9 | 120 | -565 | -615 | -660 | -875 | -435 | 85 | 195 | -535 | -655 |
| 10 | 115 | -635 | -740 | -780 | -1075 | -470 | 90 | 245 | -630 | -775 |
| 11 | 70 | -665 | -785 | -845 | -1185 | -480 | 100 | 265 | -665 | -840 |
| 12 | -40 | -700 | -840 | -900 | -1315 | -490 | 145 | 255 | -700 | -925 |
| 13 | -90 | -695 | -840 | -955 | -1385 | -430 | 140 | 235 | -695 | -970 |
| 14 | -115 | -555 | -860 | -1040 | -1290 | -300 | 75 | 330 | -675 | -1140 |
| 15 | -210 | -465 | -670 | -1090 | -1235 | -15 | -45 | 230 | -470 | -1230 |
| 16 | -205 | -475 | -635 | -1040 | -1165 | -40 | -30 | 210 | -460 | -1185 |
| 17 | -190 | -480 | -605 | -980 | -1090 | -70 | -5 | 190 | -450 | -1115 |
| 18 | -175 | -465 | -530 | -845 | -895 | -130 | 40 | 140 | -420 | -960 |
| 19 | -155 | -425 | -455 | -715 | -705 | -165 | 70 | 100 | -365 | -820 |
| 20 | -135 | -360 | -370 | -590 | -525 | -180 | 80 | 70 | -310 | -685 |
| 21 | -120 | -290 | -290 | -475 | -350 | -170 | 80 | 45 | -235 | -555 |
| 22 | -110 | -200 | -200 | -355 | -185 | -145 | 70 | 20 | -160 | -425 |
| 23 | -95 | -115 | -115 | -240 | -20 | -110 | 60 | 0 | -80 | -295 |
| 24 | -95 | -60 | -65 | -180 | 70 | -75 | 50 | 10 | -25 | -215 |
| 25 | -95 | -20 | -20 | -140 | 130 | -50 | 40 | -20 | 20 | -155 |

Table 4: STRAIN GAGE READINGS-SPECIMEN T-9 (Cont'd)(10⁻⁶ in. per in.)

| Ld No. | Gage Nos. | | | | | | | | | |
|-----------|-----------|-------|------|------|------|-------|------|-------|------|------|
| | 35 | 36 | 37 | 38 | 39 | 40 | 41 | 42 | 43 | 44 |
| 1 | 0 | 0 | 0 | 0 | 0 | 0 | 0 | 0 | 0 | 0 |
| 2 | -30 | -35 | -180 | 5 | 5 | -25 | -50 | -30 | -35 | -30 |
| 3 | -35 | -35 | -270 | 0 | -35 | -30 | -65 | -50 | -35 | -40 |
| 4 | -90 | -90 | -225 | 10 | -85 | -85 | -125 | -95 | -85 | -80 |
| 5 | -200 | -190 | -240 | 20 | -195 | -185 | -240 | -210 | -185 | -180 |
| 6 | -310 | -285 | 55 | 30 | -290 | -285 | -360 | -300 | -285 | -260 |
| 7 | -415 | -395 | 420 | 40 | -395 | -390 | -480 | -400 | -395 | -360 |
| 8 | -530 | -495 | 10 | 50 | -495 | -495 | -560 | -500 | -495 | -440 |
| 9 | -635 | -600 | 105 | 60 | -585 | -595 | -640 | -610 | -605 | -540 |
| 10 | -745 | -710 | 105 | 65 | -685 | -700 | -820 | -735 | -715 | -620 |
| 11 | -805 | -765 | 360 | 70 | -735 | -755 | -860 | -830 | -855 | -670 |
| 12 | -890 | -835 | 800 | 95 | -765 | -825 | -920 | -1000 | -915 | -715 |
| 13 | -930 | -885 | - | 110 | -770 | -865 | -930 | -1240 | -845 | -710 |
| 14 | -870 | -1105 | - | 40 | -755 | -960 | -890 | -1630 | -585 | -710 |
| 15 | 50 | -1960 | - | -220 | -580 | -1135 | -560 | -2835 | -60 | -770 |
| 16 | 40 | -1925 | - | -195 | -565 | -1095 | -530 | -2780 | -55 | -735 |
| 17 | 15 | -1835 | - | -165 | -545 | -1030 | -520 | -2715 | -45 | -725 |
| 18 | -25 | -1630 | - | -95 | -480 | -885 | -480 | -2540 | -40 | -680 |
| 19 | -30 | -1445 | - | -100 | -415 | -745 | -405 | -2350 | -10 | -615 |
| 20 | -5 | -1265 | - | -20 | -350 | -615 | -350 | -2185 | 20 | -570 |
| 21 | 40 | -1105 | - | 0 | -270 | -495 | -275 | -2030 | 80 | -490 |
| 22 | 100 | -945 | - | 10 | -190 | -370 | -200 | -1880 | 140 | -425 |
| 23 | 170 | -790 | - | 10 | -100 | -245 | -115 | -1710 | 205 | -350 |
| 24 | 225 | -685 | - | 10 | -35 | -160 | -60 | -1620 | 235 | -300 |
| 25 | 270 | -615 | - | 5 | 5 | -95 | -10 | -1555 | 260 | -260 |

Table 4: STRAIN GAGE READINGS-SPECIMEN T-9 (Cont'd)(10⁻⁶ in. per in.)

| Ld No. | Gage Nos. | | | |
|-----------|-----------|-------|-------|------|
| | 47 | 48 | 59 | 60 |
| 1 | 0 | 0 | 0 | 0 |
| 2 | 0 | -30 | -50 | -40 |
| 3 | -40 | -30 | -50 | -45 |
| 4 | -80 | -80 | -120 | -95 |
| 5 | -240 | -170 | -230 | -185 |
| 6 | -350 | -280 | -360 | -275 |
| 7 | -480 | -400 | -470 | -355 |
| 8 | -550 | -470 | -620 | -445 |
| 9 | -670 | -580 | -760 | -500 |
| 10 | -760 | -680 | -920 | -565 |
| 11 | -800 | -740 | -1010 | -595 |
| 12 | -840 | -850 | -1120 | -635 |
| 13 | -810 | -910 | -1170 | -605 |
| 14 | -835 | -1060 | -1020 | -605 |
| 15 | -615 | -2490 | -1035 | -405 |
| 16 | -580 | -2450 | -995 | -405 |
| 17 | -570 | -2410 | -940 | -405 |
| 18 | -485 | -2215 | -750 | -385 |
| 19 | -430 | -2060 | -605 | -345 |
| 20 | -325 | -1905 | -440 | -295 |
| 21 | -235 | -1750 | -290 | -255 |
| 22 | -75 | -1590 | -150 | -185 |
| 23 | 15 | -1430 | 10 | -125 |
| 24 | 80 | -1335 | 45 | -75 |
| 25 | 115 | -1210 | 130 | -40 |

Table 5: STRAIN GAGE READINGS-SPECIMEN T-10S(10⁻⁶ in. per in.)

| Ld No. | Axial Load (kips) | Gage Nos. | | | | | | | |
|-----------|-------------------------|-----------|-------|-------|------|-------|-------|------|-------|
| | | 1 | 2 | 3 | 4 | 5 | 6 | 7 | 8 |
| 1 | 0 | 0 | 0 | 0 | 0 | 0 | 0 | 0 | 0 |
| 2 | 50 | -110 | -130 | -120 | -115 | -125 | -100 | -25 | -65 |
| 3 | 50 | -115 | -115 | -100 | -110 | -130 | -90 | -30 | -60 |
| 4 | 100 | -250 | -245 | -230 | -235 | -235 | -185 | -85 | -130 |
| 5 | 150 | -360 | -335 | -340 | -325 | -370 | -280 | -155 | -235 |
| 6 | 200 | -475 | -400 | -470 | -435 | -480 | -380 | -225 | -340 |
| 7 | 250 | -570 | -545 | -670 | -530 | -580 | -480 | -300 | -450 |
| 8 | 300 | -635 | -650 | -705 | -620 | -680 | -580 | -365 | -585 |
| 9 | 350 | -715 | -755 | -850 | -710 | -785 | -690 | -425 | -730 |
| 10 | 375 | -740 | -835 | -960 | -735 | -835 | -750 | -435 | -810 |
| 11 | 390 | -770 | -880 | -1030 | -730 | -870 | -780 | -445 | -865 |
| 12 | 400 | -780 | -920 | -1070 | -730 | -900 | -805 | -450 | -910 |
| 13 | 410 | -810 | -950 | -1135 | -720 | -920 | -835 | -455 | -950 |
| 14 | 350 | -670 | -845 | -955 | -640 | -780 | -705 | -410 | -770 |
| 15 | 390 | -755 | -930 | -1080 | -680 | -880 | -795 | -440 | -895 |
| 16 | 410 | -790 | -970 | -1150 | -690 | -920 | -835 | -445 | -960 |
| 17 | 420 | -810 | -995 | -1190 | -690 | -945 | -860 | -445 | -1000 |
| 18 | 426 | -830 | -1045 | -1210 | -640 | -975 | -900 | -420 | -1075 |
| 19 | 431 | -835 | -1090 | -1200 | -605 | -995 | -925 | -395 | -1145 |
| 20 | 437 | -830 | -1145 | -1185 | -570 | -1005 | -945 | -360 | -1215 |
| 21 | 442 | -835 | -1200 | -1170 | -545 | -1030 | -985 | -330 | -1295 |
| 22 | 446 | -840 | -1255 | -1160 | -525 | -1050 | -1020 | -290 | -1380 |
| 23 | 452 | -845 | -1310 | -1150 | -500 | -1060 | -1050 | -245 | -1490 |
| 24 | 455 | -850 | -1380 | -1140 | -480 | -1080 | -1095 | -175 | -1660 |
| 25 | 461 | -860 | -1440 | -1145 | -455 | -1095 | -1130 | -120 | -1835 |
| 26 | 465 | -860 | -1495 | -1135 | -425 | -1100 | -1180 | -55 | -1970 |
| 27 | 467 | -870 | -1570 | -1125 | -390 | -1100 | -1240 | 100 | - |
| 28 | 465 | -860 | -1750 | -1110 | -305 | -1060 | -1475 | 635 | - |
| 29 | 472 | -870 | -1865 | -1110 | -255 | -1055 | -1660 | 1055 | - |
| 30 | 465 | -840 | -2130 | -1100 | -155 | -990 | -2060 | 1775 | - |
| 31 | 443 | -620 | -3610 | -1060 | 140 | -770 | -4190 | 4750 | - |
| 32 | 423 | -455 | -4310 | -1070 | 300 | -630 | -5930 | 6430 | - |
| 33 | 373 | -380 | -4140 | -940 | 235 | -555 | -5730 | 6345 | - |
| 34 | 300 | -280 | -3875 | -710 | 150 | -440 | -5410 | 6200 | - |
| 35 | 200 | -140 | -3555 | -440 | 40 | -280 | -4955 | 5995 | - |
| 36 | 300 | -280 | -3870 | -715 | 150 | -440 | -5375 | 6170 | - |
| 37 | 423 | -450 | -4325 | -1070 | 290 | -620 | -5955 | 6465 | - |
| 38 | 402 | -260 | -5170 | -1110 | 440 | -475 | -8015 | 8200 | - |
| 39 | 399 | - | - | - | - | - | - | - | - |
| 40 | 43 | - | - | - | - | - | - | - | - |
| 41 | 0 | 295 | -3940 | -40 | 0 | 150 | -6760 | 8485 | - |

Table 5: STRAIN GAGE READINGS-SPECIMEN T-10S (Cont'd)(10⁻⁶ in. per in.)

| Ld No. | Gage Nos. | | | | | | | | | |
|-----------|-----------|-------|-------|------|-------|-------|-------|--------|------|--------|
| | 9 | 10 | 11 | 12 | 13 | 14 | 15 | 16 | 17 | 18 |
| 1 | 0 | 0 | 0 | 0 | 0 | 0 | 0 | 0 | 0 | 0 |
| 2 | -45 | -55 | -100 | -105 | -110 | -195 | -60 | -90 | -45 | -95 |
| 3 | -55 | -55 | -100 | -105 | -115 | -195 | -65 | -90 | -35 | -90 |
| 4 | -115 | -125 | -205 | -215 | -230 | -330 | -135 | -175 | -100 | -170 |
| 5 | -195 | -215 | -305 | -325 | -330 | -435 | -215 | -265 | -170 | -255 |
| 6 | -285 | -315 | -405 | -435 | -425 | -545 | -310 | -380 | -250 | -365 |
| 7 | -390 | -410 | -510 | -545 | -525 | -650 | -385 | -480 | -325 | -475 |
| 8 | -500 | -505 | -610 | -635 | -645 | -735 | -480 | -600 | -400 | -605 |
| 9 | -610 | -615 | -720 | -735 | -770 | -830 | -570 | -735 | -465 | -745 |
| 10 | -665 | -670 | -785 | -785 | -840 | -875 | -600 | -800 | -495 | -825 |
| 11 | -705 | -705 | -825 | -805 | -885 | -905 | -625 | -850 | -505 | -880 |
| 12 | -720 | -725 | -855 | -820 | -910 | -925 | -640 | -890 | -525 | -925 |
| 13 | -745 | -755 | -890 | -840 | -945 | -940 | -655 | -925 | -510 | -965 |
| 14 | -635 | -625 | -745 | -725 | -830 | -830 | -570 | -770 | -460 | -785 |
| 15 | -705 | -715 | -845 | -805 | -915 | -905 | -635 | -880 | -500 | -910 |
| 16 | -740 | -755 | -890 | -835 | -955 | -945 | -650 | -935 | -510 | -970 |
| 17 | -755 | -780 | -925 | -845 | -980 | -965 | -670 | -980 | -515 | -1020 |
| 18 | -765 | -805 | -965 | -850 | -1010 | -985 | -680 | -1050 | -490 | -1090 |
| 19 | -775 | -825 | -1000 | -855 | -1030 | -990 | -670 | -1130 | -465 | -1170 |
| 20 | -780 | -845 | -1025 | -850 | -1050 | -1005 | -660 | -1215 | -435 | -1260 |
| 21 | -780 | -860 | -1065 | -845 | -1070 | -1015 | -650 | -1310 | -405 | -1360 |
| 22 | -785 | -880 | -1105 | -835 | -1105 | -1035 | -650 | -1390 | -375 | -1450 |
| 23 | -790 | -905 | -1150 | -825 | -1125 | -1045 | -655 | -1490 | -345 | -1560 |
| 24 | -795 | -925 | -1200 | -805 | -1165 | -1065 | -645 | -1590 | -310 | -1715 |
| 25 | -800 | -960 | -1260 | -785 | -1195 | -1095 | -645 | -1685 | -270 | -1835 |
| 26 | -795 | -990 | -1360 | -740 | -1225 | -1095 | -660 | -1845 | -235 | -1925 |
| 27 | -795 | -1045 | - | -410 | -1380 | -1140 | -790 | -2170 | -185 | -1980 |
| 28 | -785 | -1215 | - | 85 | -1650 | -1265 | -940 | -2745 | -30 | -2660 |
| 29 | -765 | -1405 | - | 375 | -1740 | -1410 | -1240 | -3685 | 105 | -3370 |
| 30 | -685 | -1795 | - | 865 | -1765 | -1700 | -1480 | -4980 | 310 | -4840 |
| 31 | -400 | -3985 | - | 2620 | -1635 | -3095 | -2025 | -9195 | 1835 | -10410 |
| 32 | -220 | -5985 | - | 3780 | -1515 | -4270 | -2135 | -11550 | 2950 | -13325 |
| 33 | -155 | -5755 | - | 3670 | -1405 | -4100 | -2100 | -11310 | 2885 | -13095 |
| 34 | -70 | -5445 | - | 3485 | -1255 | -3800 | -2045 | -10930 | 2755 | -12725 |
| 35 | 45 | -5020 | - | 3230 | -1040 | -3435 | -1975 | -10410 | 2615 | -12215 |
| 36 | -75 | -5405 | - | 3460 | -1250 | -3780 | -2040 | -10880 | 2735 | -12685 |
| 37 | -205 | -6015 | - | 3810 | -1495 | -4295 | -2130 | -11595 | 2975 | -13390 |
| 38 | -30 | -8525 | - | 5155 | -1370 | -6705 | -2155 | - | 4205 | - |
| 39 | - | - | - | - | - | - | - | - | - | - |
| 40 | - | - | - | - | - | - | - | - | - | - |
| 41 | 355 | -7565 | - | 4510 | -500 | -5740 | -1940 | - | 4015 | - |

Table 5: STRAIN GAGE READINGS-SPECIMEN T-10S (Cont'd)(10⁻⁶ in. per in.)

| Ld No. | Gage Nos. | | | | | | | | | |
|-----------|-----------|-------|------|--------|------|------|------|------|------|------|
| | 19 | 20 | 21 | 22 | 23 | 24 | 25 | 26 | 27 | 28 |
| 1 | 0 | 0 | 0 | 0 | 0 | 0 | 0 | 0 | 0 | 0 |
| 2 | -30 | -50 | -40 | -45 | -5 | -55 | -40 | -30 | -40 | -15 |
| 3 | -30 | -50 | -35 | -45 | -5 | -45 | -30 | -40 | -35 | -20 |
| 4 | -80 | -120 | -95 | -110 | 0 | -90 | -35 | -80 | -50 | -30 |
| 5 | -145 | -215 | -175 | -210 | 25 | -105 | -20 | -85 | -55 | -20 |
| 6 | -215 | -320 | -255 | -320 | 65 | -130 | 0 | -95 | -50 | -20 |
| 7 | -290 | -430 | -345 | -420 | 105 | -150 | 20 | -110 | -40 | -35 |
| 8 | -360 | -555 | -430 | -535 | 155 | -175 | 60 | -120 | -40 | 20 |
| 9 | -420 | -695 | -515 | -660 | 220 | -215 | 110 | -145 | -25 | 35 |
| 10 | -450 | -775 | -555 | -725 | 265 | -235 | 150 | -175 | -15 | 40 |
| 11 | -465 | -825 | -575 | -760 | 295 | -255 | 170 | -180 | -15 | 50 |
| 12 | -475 | -865 | -595 | -800 | 315 | -270 | 190 | -185 | 0 | 45 |
| 13 | -475 | -900 | -605 | -835 | 355 | -285 | 215 | -200 | 0 | 45 |
| 14 | -420 | -730 | -515 | -675 | 255 | -210 | 140 | 5 | -5 | 35 |
| 15 | -450 | -850 | -580 | -775 | 325 | -260 | 195 | -175 | 5 | 50 |
| 16 | -465 | -910 | -600 | -835 | 365 | -295 | 220 | -195 | 10 | 60 |
| 17 | -460 | -960 | -615 | -875 | 400 | -310 | 250 | -205 | 20 | 65 |
| 18 | -450 | -1010 | -620 | -910 | 445 | -335 | 285 | -220 | 25 | 65 |
| 19 | -435 | -1070 | -620 | -950 | 485 | -355 | 300 | -235 | 35 | 75 |
| 20 | -415 | -1130 | -625 | -990 | 525 | -380 | 330 | -250 | 50 | 75 |
| 21 | -390 | -1190 | -620 | -1020 | 565 | -400 | 360 | -265 | 60 | 80 |
| 22 | -360 | -1255 | -615 | -1075 | 625 | -430 | 390 | -285 | 75 | 125 |
| 23 | -320 | -1375 | -610 | -1145 | 680 | -455 | 440 | -310 | 100 | 80 |
| 24 | -260 | -1540 | -580 | -1260 | 740 | -485 | 500 | -330 | 125 | 85 |
| 25 | -205 | -1700 | -560 | -1370 | 805 | -520 | 555 | -360 | 155 | 85 |
| 26 | -150 | -1830 | -550 | -1500 | 890 | -555 | 640 | -400 | 200 | 75 |
| 27 | 20 | -2225 | -485 | -1765 | 1020 | -615 | 790 | -475 | 380 | 0 |
| 28 | 400 | -3940 | -375 | -2615 | 1230 | -680 | 1020 | -585 | 605 | -90 |
| 29 | 765 | -5715 | -415 | -4270 | 1430 | -720 | 1220 | -660 | 780 | -155 |
| 30 | 1280 | -8480 | -570 | -6410 | 1715 | -735 | 1510 | -745 | 1210 | -215 |
| 31 | 3305 | - | -905 | -11510 | 2340 | -500 | 2790 | -635 | 3370 | -490 |
| 32 | 4660 | - | -945 | - | 2615 | -265 | 3395 | -440 | 5165 | -570 |
| 33 | 4590 | - | -930 | - | 2460 | -320 | 3235 | -500 | 4985 | -595 |
| 34 | 4470 | - | -895 | - | 2235 | -395 | 3000 | -555 | 4725 | -650 |
| 35 | 4300 | - | -845 | - | 1925 | -495 | 2680 | -640 | 4375 | -725 |
| 36 | 4445 | - | -890 | - | 2230 | -400 | 2990 | -560 | 4700 | -650 |
| 37 | 4695 | - | -950 | - | 2615 | -250 | 3405 | -430 | 5195 | -560 |
| 38 | 6150 | - | -895 | - | 2870 | 5 | 3905 | -170 | 7305 | -545 |
| 39 | - | - | - | - | - | - | - | - | - | - |
| 40 | - | - | - | - | - | - | - | - | - | - |
| 41 | 5960 | - | -755 | - | 1765 | -375 | 2840 | -480 | 6600 | -825 |

Table 5: STRAIN GAGE READINGS-SPECIMEN T-10S (Cont'd)(10⁻⁶ in. per in.)

| Ld No. | Gage Nos. | | | |
|-----------|-----------|------|------|------|
| | 29 | 30 | 31 | 32 |
| 1 | 0 | 0 | 0 | 0 |
| 2 | -55 | -10 | -40 | -5 |
| 3 | -50 | -5 | -40 | 0 |
| 4 | -75 | 0 | -70 | 10 |
| 5 | -90 | -140 | -85 | 35 |
| 6 | -110 | 70 | -100 | 70 |
| 7 | -120 | 115 | -120 | 120 |
| 8 | -150 | 160 | -145 | 160 |
| 9 | -175 | 220 | -170 | 220 |
| 10 | -190 | 260 | -180 | 235 |
| 11 | -195 | 270 | -190 | 265 |
| 12 | -200 | 290 | -195 | 275 |
| 13 | -210 | 310 | -200 | 290 |
| 14 | -155 | 235 | -155 | 220 |
| 15 | -195 | 285 | -185 | 275 |
| 16 | -210 | 320 | -200 | 300 |
| 17 | -220 | 345 | -210 | 320 |
| 18 | -230 | 375 | -215 | 330 |
| 19 | -235 | 405 | -220 | 360 |
| 20 | -245 | 430 | -230 | 370 |
| 21 | -250 | 450 | -235 | 390 |
| 22 | -260 | 470 | -235 | 410 |
| 23 | -265 | 505 | -240 | 425 |
| 24 | -265 | 540 | -240 | 435 |
| 25 | -260 | 570 | -240 | 460 |
| 26 | -250 | 595 | -225 | 460 |
| 27 | -100 | 525 | -25 | 300 |
| 28 | 90 | 525 | 235 | 150 |
| 29 | 270 | 640 | 450 | 130 |
| 30 | 470 | 940 | 770 | 195 |
| 31 | 1995 | 2890 | 1970 | 995 |
| 32 | 3520 | 4085 | 3110 | 2050 |
| 33 | 3400 | 3970 | 3025 | 1920 |
| 34 | 3185 | 3810 | 2890 | 1720 |
| 35 | 2920 | 3550 | 2695 | 1480 |
| 36 | 3155 | 3765 | 2870 | 720 |
| 37 | 3550 | 4105 | 3140 | 2065 |
| 38 | 5400 | 5460 | 4790 | 3725 |
| 39 | - | - | - | - |
| 40 | - | - | - | - |
| 41 | 4810 | 4935 | 4500 | 3245 |

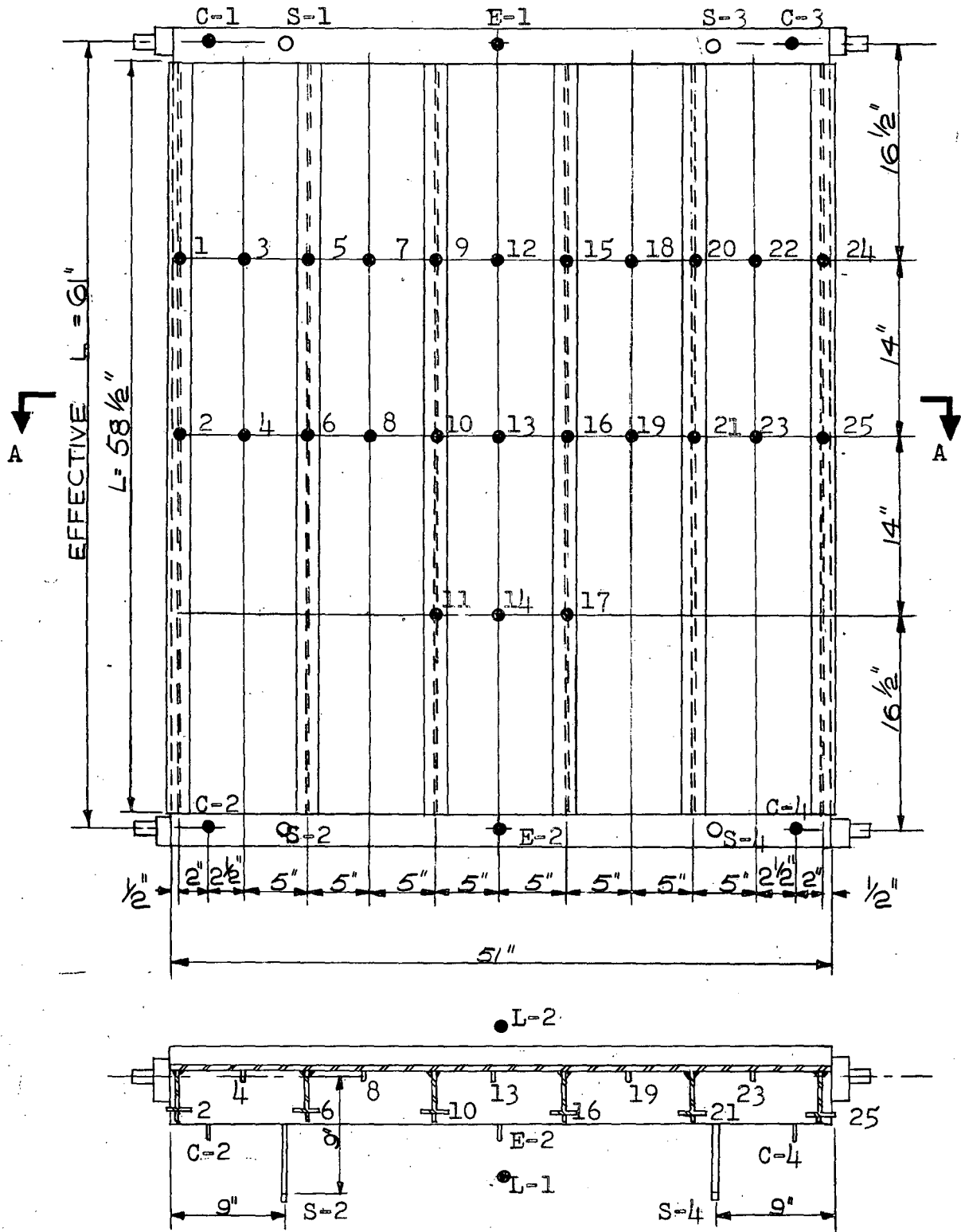
3. DIAL GAGE READINGS

The location of points at which dial gage readings were taken is shown in Figs. 7, 8, and 9 on pp. 36, 37, and 38, respectively.

The dial gages are divided into four groups depending on what they measure:

- 1) Gages Nos. 1 to 25 give lateral deflections of the specimen, positive if corresponding to convex displacement of the front face.
- 2) Gages E and C (E = end, C = corner) give lateral deflections of the end blocks, positive if in the positive direction of gages 1 to 25.
- 3) Gages L-1 and L-2 give longitudinal shortening of the specimen, positive if indicating shortening.
- 4) Gages S give displacement which should be divided by nine inches to obtain rotation (slope) of the end block, positive if rotation corresponds to convex deformation of the front face of the specimen.

All readings are given in thousands of an inch.



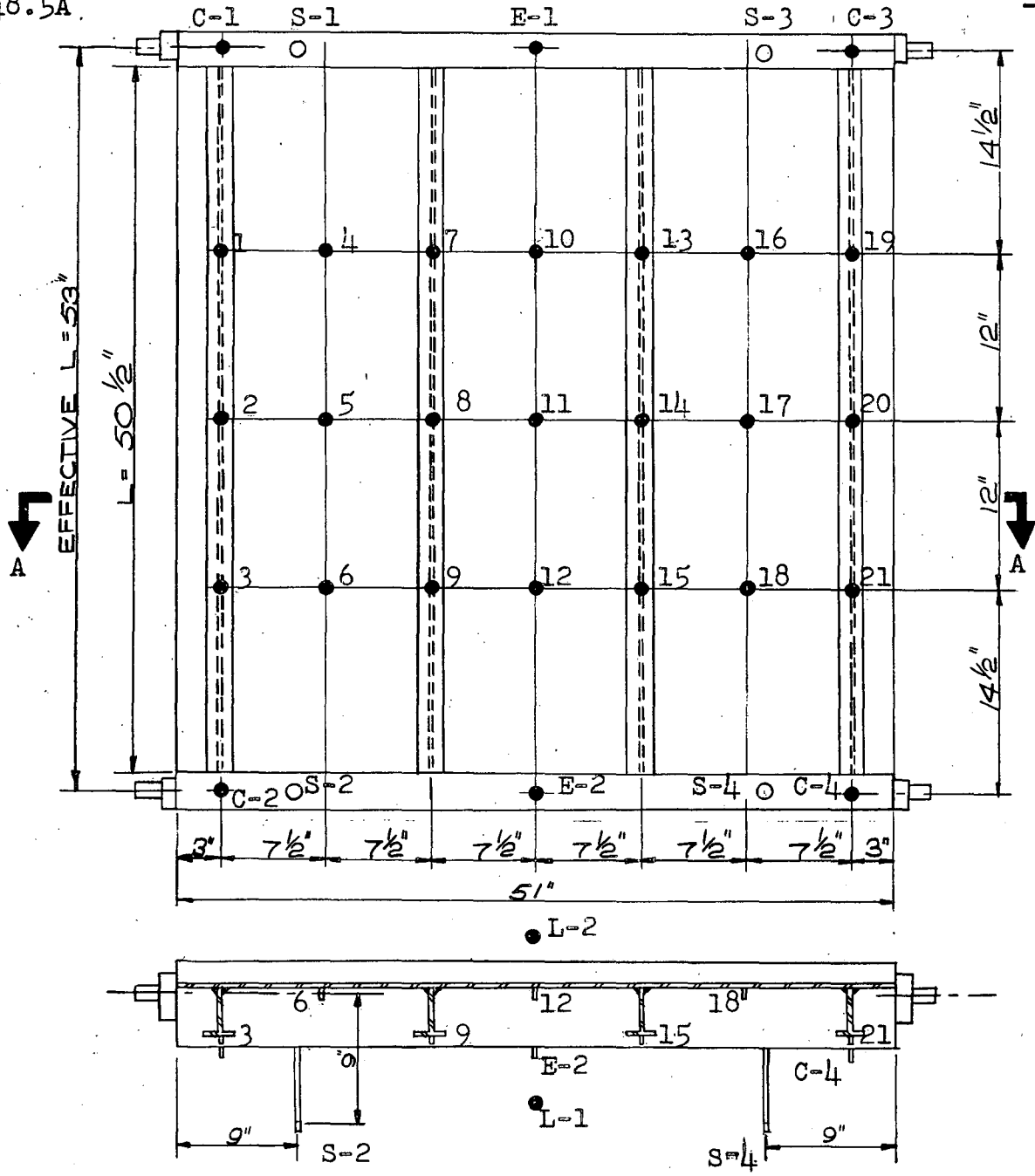
Section A-A

Fig. 7 LOCATION OF DIAL GAGES (T-6)

Scale 1"=1'-0"

248.5A

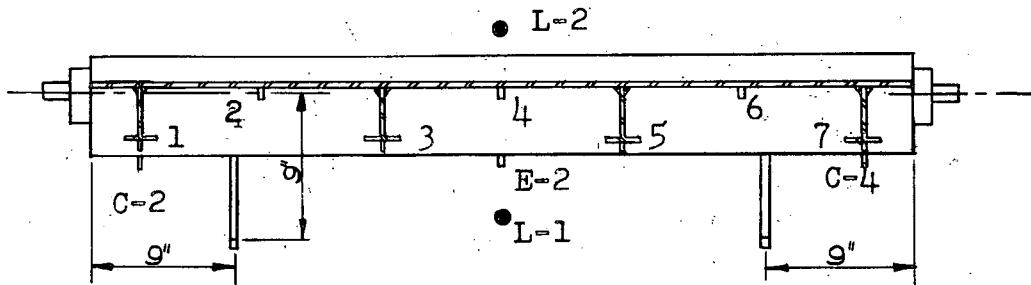
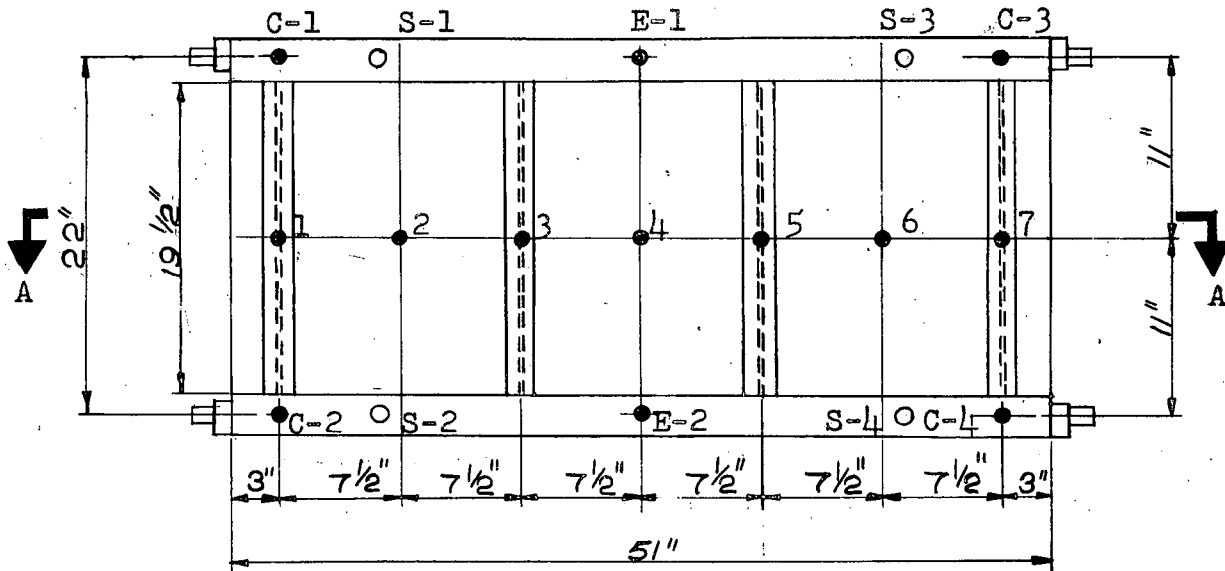
-37



Section A-A

Fig. 8 LOCATION OF DIAL GAGES (T-7, T-8, T-9)

Scale: 1"=1'-0"



Section A-A

Fig. 9 LOCATION OF DIAL GAGES (T-10S)

Scale: 1"=1'-0"

Table 6. DIAL GAGE READINGS - SPECIMEN T-6(10⁻³ in.)

| Ld. No. | Loads | | Gage Nos. | | | | | | | |
|------------|---------------|-----------------|-----------|------|-----|------|-----|------|-----|------|
| | Lat. (psi) | Axial (kips) | 1 | 2 | 3 | 4 | 5 | 6 | 7 | 8 |
| 1 | 1.96 | 0 | 0 | 0 | 0 | 0 | 0 | 0 | 0 | 0 |
| 2 | 3.93 | 0 | 30 | 29 | 39 | 41 | 39 | 43 | 42 | 45 |
| 3 | 5.89 | 0 | 59 | 58 | 74 | 80 | 76 | 83 | 80 | 87 |
| 4 | 6.48 | 0 | 68 | 68 | 86 | 92 | 88 | 97 | 92 | 102 |
| 5 | 6.48 | 50 | 82 | 88 | 106 | 112 | 103 | 113 | 100 | 109 |
| 6 | 6.48 | 100 | 92 | 93 | 107 | 115 | 104 | 114 | 103 | 114 |
| 7 | 6.48 | 200 | 103 | 106 | 119 | 129 | 114 | 126 | 113 | 125 |
| 8 | 6.48 | 300 | 113 | 119 | 131 | 145 | 127 | 141 | 126 | 142 |
| 9 | 6.48 | 400 | 135 | 148 | 157 | 190 | 152 | 174 | 152 | 174 |
| 10 | 6.48 | 423 | 156 | 178 | 182 | 232 | 176 | 208 | 178 | 209 |
| 11 | 6.48 | 442 | 171 | 197 | 200 | 262 | 194 | 233 | 197 | 235 |
| 12 | 6.48 | 450 | 187 | 218 | 220 | 291 | 211 | 256 | 219 | 257 |
| 13 | 6.48 | 458 | 210 | 247 | 248 | 333 | 238 | 291 | 250 | 294 |
| 14 | 6.48 | 460 | 222 | 264 | 264 | 358 | 252 | 312 | 261 | 326 |
| 15 | 6.48 | 462 | 229 | 271 | 271 | 367 | 258 | 319 | 271 | 322 |
| 16 | 6.48 | 463 | 239 | 284 | 282 | 386 | 270 | 335 | 282 | 339 |
| 17 | 6.48 | 453 | 274 | 330 | 323 | 453 | 309 | 390 | 323 | 397 |
| 18 | 6.48 | 422 | 337 | 412 | 396 | 584 | 380 | 494 | 396 | 535 |
| 19 | 6.48 | 397 | 333 | 407 | 391 | 580 | 376 | 489 | 392 | 531 |
| 20 | 6.48 | 330 | 319 | 387 | 375 | 557 | 360 | 467 | 376 | 509 |
| 21 | 6.48 | 297 | 304 | 370 | 358 | 532 | 344 | 546 | 359 | 486 |
| 22 | 6.48 | 348 | 317 | 387 | 373 | 553 | 257 | 465 | 373 | 506 |
| 23 | 6.48 | 398 | 332 | 407 | 392 | 579 | 275 | 490 | 395 | 532 |
| 24 | 6.48 | 398 | 391 | 490 | 657 | 727 | 340 | 598 | 459 | 683 |
| 25 | 6.48 | 263 | 760 | 1091 | 846 | — | 745 | 1277 | 868 | — |
| 26 | 6.48 | 54 | 668 | 971 | 745 | 1410 | 649 | 1153 | 767 | 1354 |
| 27 | 6.48 | 0 | 639 | 929 | 720 | 1363 | 628 | 1116 | 750 | 1318 |
| 28 | 3.93 | 0 | 601 | 886 | 674 | 1311 | 582 | 1063 | 702 | 1262 |

Table 6. DIAL GAGE READINGS - SPECIMEN T-6 (Cont'd)(10⁻³ in.)

| Ld. No. | Gage Nos. | | | | | | | | | |
|------------|-----------|------|-----|-----|------|-----|-----|------|-----|-----|
| | 9 | 10 | 11 | 12 | 13 | 14 | 15 | 16 | 17 | 18 |
| 1 | 0 | 0 | 0 | 0 | 0 | 0 | 0 | 0 | 0 | 0 |
| 2 | 40 | 43 | 32 | 39 | 44 | 34 | 39 | 43 | 32 | 40 |
| 3 | 78 | 85 | 93 | 79 | 88 | 66 | 78 | 86 | 64 | 80 |
| 4 | 91 | 98 | 73 | 92 | 102 | 77 | 91 | 100 | 73 | 93 |
| 5 | 96 | 105 | 77 | 96 | 106 | 79 | 92 | 102 | 76 | 91 |
| 6 | 98 | 109 | 80 | 97 | 111 | 83 | 95 | 108 | 80 | 93 |
| 7 | 107 | 120 | 88 | 106 | 122 | 91 | 103 | 119 | 88 | 101 |
| 8 | 122 | 126 | 100 | 120 | 139 | 104 | 117 | 136 | 99 | 113 |
| 9 | 150 | 171 | 125 | 147 | 171 | 128 | 143 | 167 | 121 | 133 |
| 10 | 174 | 205 | 150 | 173 | 206 | 150 | 168 | 200 | 144 | 155 |
| 11 | 193 | 232 | 169 | 194 | 234 | 169 | 189 | 228 | 163 | 174 |
| 12 | 210 | 254 | 175 | 207 | 257 | 185 | 206 | 249 | 177 | 189 |
| 13 | 237 | 391 | 213 | 240 | 295 | 212 | 236 | 290 | 206 | 216 |
| 14 | 251 | 310 | 226 | 253 | 313 | 224 | 247 | 305 | 217 | - |
| 15 | 258 | 318 | 233 | 259 | 323 | 230 | 253 | 315 | 225 | 233 |
| 16 | 271 | 336 | 245 | 272 | 342 | 243 | 266 | 333 | 237 | 245 |
| 17 | 311 | 396 | 285 | 312 | 411 | 283 | 306 | 396 | 276 | 286 |
| 18 | 385 | 513 | 355 | 386 | 549 | 357 | 383 | 520 | 347 | 364 |
| 19 | 393 | 509 | 352 | 384 | 545 | 354 | 379 | 515 | 344 | 361 |
| 20 | 367 | 488 | 337 | 370 | 525 | 338 | 364 | 494 | 330 | 346 |
| 21 | 350 | 466 | 321 | 352 | 503 | 321 | 348 | 473 | 313 | 330 |
| 22 | 364 | 485 | 334 | 365 | 521 | 335 | 362 | 491 | 326 | 344 |
| 23 | 483 | 509 | 351 | 382 | 543 | 352 | 379 | 515 | 349 | 361 |
| 24 | 451 | 619 | 417 | 450 | 658 | 419 | 448 | 625 | 407 | 431 |
| 25 | 864 | 1289 | 814 | 867 | 1318 | | 858 | 1288 | - | 851 |
| 26 | 769 | 1165 | 726 | 776 | 1205 | 722 | 764 | 1163 | - | 751 |
| 27 | 759 | 1134 | 704 | 771 | 1180 | 700 | 763 | 1140 | 684 | 758 |
| 28 | 712 | 1081 | 664 | 725 | 1124 | 658 | 718 | 1085 | 648 | 712 |

Table 6. DIAL GAGE READINGS - SPECIMEN T-6 (Cont'd)(10⁻³ in.)

| Ld. No. | Gage Nos. | | | | | | | | | |
|------------|-----------|-----|------|-----|------|-----|------|-----|-----|-----|
| | 19 | 20 | 21 | 22 | 23 | 24 | 25 | E-1 | E-2 | C-1 |
| 1 | 0 | 0 | 0 | 0 | 0 | 0 | 0 | 0 | 0 | 0 |
| 2 | 44 | 38 | 20 | 38 | 41 | 29 | 28 | 20 | 4 | 19 |
| 3 | 88 | 75 | 62 | 76 | 81 | 60 | 64 | 41 | 9 | 37 |
| 4 | 102 | 87 | 74 | 87 | 94 | 70 | 74 | 49 | 11 | 43 |
| 5 | 102 | 83 | 73 | 80 | 91 | 60 | 69 | 50 | 11 | 56 |
| 6 | 108 | 85 | 77 | 83 | 94 | 61 | 71 | 50 | 11 | 56 |
| 7 | 119 | 93 | 86 | 91 | 101 | 66 | 77 | 51 | 12 | 59 |
| 8 | 136 | 105 | 101 | 105 | 115 | 77 | 88 | 54 | 12 | 63 |
| 9 | 171 | 129 | 130 | 138 | 139 | 97 | 110 | 61 | 14 | 71 |
| 10 | 211 | 153 | 162 | 170 | 168 | 119 | 138 | 59 | 17 | 73 |
| 11 | 243 | 173 | 191 | 200 | 196 | 139 | 164 | 68 | 19 | 75 |
| 12 | 268 | 189 | 209 | 218 | 213 | 157 | 179 | 70 | 20 | 77 |
| 13 | 316 | 219 | 248 | 257 | 249 | 178 | 212 | 73 | 23 | 80 |
| 14 | | - | - | - | - | - | 231 | - | 24 | - |
| 15 | 350 | 235 | 272 | 280 | 271 | 194 | 233 | 75 | 26 | 81 |
| 16 | 378 | 250 | 291 | 297 | 287 | 207 | 250 | 76 | 29 | 82 |
| 17 | 485 | 287 | 350 | 342 | 331 | 245 | 300 | 81 | 35 | 86 |
| 18 | 696 | 365 | 464 | 418 | 398 | 317 | 398 | 89 | 36 | 92 |
| 19 | 693 | 362 | 460 | 415 | 394 | 316 | 395 | 90 | 35 | 93 |
| 20 | 669 | 347 | 440 | 399 | 379 | 302 | 378 | 89 | 33 | 91 |
| 21 | 648 | 331 | 419 | 381 | 360 | 288 | 359 | 85 | 34 | 89 |
| 22 | 664 | 344 | 437 | 396 | 375 | 301 | 374 | 88 | 35 | 91 |
| 23 | 691 | 360 | 460 | 415 | 393 | 315 | 393 | 91 | 76 | 98 |
| 24 | 848 | 427 | 564 | 481 | 460 | 376 | 378 | 98 | 68 | 99 |
| 25 | 1616 | 832 | 1197 | 876 | 1000 | | 1024 | 138 | 67 | 131 |
| 26 | 1475 | 738 | 1079 | 772 | 900 | 666 | 905 | 125 | 62 | 118 |
| 27 | 1450 | 749 | 1065 | 783 | 892 | 680 | 893 | 154 | - | 122 |
| 28 | 1395 | 706 | 1014 | 741 | 845 | 647 | 854 | 137 | - | 105 |

Table 6. DIAL GAGE READINGS - SPECIMEN T-6 (Cont'd)(10⁻³ in.)

| Ld. No. | Gage Nos. | | | | | | | |
|------------|-----------|-----|-----|---------------|-----|-----|-----|-----|
| | C-2 | C-3 | C-4 | L1,L2 Avg. | S-1 | S-2 | S-3 | S-4 |
| 1 | 0 | 0 | 0 | — | — | 0 | — | 0 |
| 2 | 0 | 16 | 2 | — | — | 16 | — | 14 |
| 3 | 2 | 34 | 4 | — | — | 31 | — | 28 |
| 4 | 2 | 40 | 5 | — | — | 36 | — | 33 |
| 5 | 2 | 20 | 5 | 0 | 0 | 47 | 0 | 54 |
| 6 | 2 | 48 | 4 | 10 | 0 | 48 | 3 | 56 |
| 7 | 2 | 29 | 5 | 27 | 3 | 50 | 8 | 58 |
| 8 | 2 | 33 | 5 | 42 | 9 | 54 | 14 | 63 |
| 9 | 3 | 40 | 6 | 60 | 21 | 65 | 25 | 73 |
| 10 | 5 | 43 | 8 | 69 | 33 | 79 | 38 | 86 |
| 11 | 7 | 44 | 10 | 76 | 45 | 90 | 49 | 96 |
| 12 | 8 | 46 | 11 | 80 | 51 | 96 | 56 | 101 |
| 13 | 11 | 49 | 13 | 87 | 67 | 110 | 71 | 117 |
| 14 | 12 | — | 15 | 90 | — | 119 | — | 124 |
| 15 | 14 | 51 | 16 | 92 | 76 | 126 | 80 | 130 |
| 16 | 16 | 52 | 19 | 95 | 83 | 145 | 86 | 141 |
| 17 | 22 | 56 | 25 | 103 | 102 | 180 | 106 | 187 |
| 18 | 22 | 63 | 25 | 116 | 138 | 178 | 142 | 184 |
| 19 | 22 | 63 | 25 | 115 | 136 | 170 | 140 | 177 |
| 20 | 21 | 62 | 23 | 108 | 128 | 162 | 133 | 169 |
| 21 | 21 | 60 | 23 | 100 | 119 | 168 | 124 | 175 |
| 22 | 22 | 62 | 25 | 106 | 126 | 177 | 131 | 183 |
| 23 | 57 | 64 | 59 | 113 | 135 | 410 | 139 | 404 |
| 24 | 55 | 69 | 54 | 125 | 169 | 362 | 172 | 360 |
| 25 | 53 | 97 | 55 | 167 | 376 | 343 | 372 | 336 |
| 26 | 52 | 90 | 55 | 118 | 326 | 321 | 321 | 313 |
| 27 | — | 149 | — | — | — | — | — | — |
| 28 | — | 137 | — | — | — | — | — | — |

Table 7. DIAL GAGE READINGS - SPECIMEN T-7(10⁻³ in.)

| Ld. No. | Load (Axial) (kips) | Gage Nos. | | | | | | | | |
|------------|---------------------------|-----------|-----|-----|------|-----|-----|-----|-----|-----|
| | | 1 | 2 | 3 | 4 | 5 | 6 | 7 | 8 | 9 |
| 1 | 0 | 0 | 0 | 0 | 0 | 0 | 0 | 0 | 0 | 0 |
| 2 | 50 | 9 | 5 | 0 | 6 | 5 | 2 | 4 | 2 | -1 |
| 3 | 50 | 8 | 5 | 0 | 6 | 4 | 2 | 4 | 3 | -1 |
| 4 | 100 | 11 | 6 | 0 | 9 | 8 | 5 | 7 | 4 | -1 |
| 5 | 150 | 12 | 8 | 1 | 10 | 11 | 10 | 9 | 6 | 1 |
| 6 | 200 | 13 | 9 | 1 | 12 | 14 | 14 | 10 | 8 | 1 |
| 7 | 300 | 15 | 11 | 2 | 14 | 23 | 24 | 14 | 13 | 4 |
| 8 | 350 | 18 | 13 | 2 | 16 | 31 | 33 | 18 | 16 | 6 |
| 9 | 375 | 21 | 17 | 1 | 17 | 38 | 40 | 18 | 14 | 0 |
| 10 | 385 | 22 | 18 | 1 | 16 | 39 | 42 | 17 | 13 | -1 |
| 11 | 389 | 23 | 19 | 0 | 16 | 41 | 43 | 17 | 13 | -3 |
| 12 | 394 | 23 | 19 | 1 | 19 | 42 | 44 | 17 | 12 | -3 |
| 13 | 403 | 23 | 20 | 1 | 13 | 43 | 43 | 17 | 11 | -4 |
| 14 | 406 | 23 | 20 | 1 | 13 | 43 | 43 | 16 | 11 | -5 |
| 15 | 411 | 23 | 20 | 1 | 11 | 44 | 43 | 17 | 11 | -5 |
| 16 | 417 | 24 | 21 | 2 | 10 | 45 | 43 | 16 | 11 | -6 |
| 17 | 425 | 24 | 21 | 3 | 7 | 48 | 42 | 16 | 10 | -6 |
| 18 | 430 | 24 | 22 | 3 | 5 | 50 | 42 | 16 | 10 | -6 |
| 19 | 436 | 24 | 22 | 3 | 2 | 54 | 41 | 16 | 10 | -6 |
| 20 | 442 | 25 | 23 | 3 | -2 | 62 | 38 | 17 | 11 | -5 |
| 21 | 447 | 26 | 25 | 5 | -8 | 72 | 35 | 19 | 13 | -4 |
| 22 | 449 | 31 | 31 | 8 | -42 | 101 | 27 | 24 | 20 | 1 |
| 23 | 443 | 45 | 50 | 24 | -85 | 160 | 5 | 41 | 41 | 16 |
| 24 | 418 | 103 | 119 | 70 | -147 | 296 | 43 | 110 | 112 | 64 |
| 25 | 382 | 175 | 194 | 117 | -174 | 396 | 96 | 194 | 189 | 108 |
| 26 | 349 | 166 | 182 | 108 | -177 | 370 | 94 | 184 | 176 | 100 |
| 27 | 299 | 152 | 155 | 96 | -180 | 332 | 89 | 169 | 159 | 87 |
| 28 | 200 | 133 | 139 | 78 | -177 | 266 | 74 | 148 | 132 | 69 |
| 29 | 298 | 150 | 163 | 95 | -180 | 329 | 88 | 167 | 157 | 86 |
| 30 | 348 | 164 | 180 | 108 | -178 | 367 | 93 | 182 | 175 | 99 |
| 31 | 382 | 176 | 196 | 118 | -176 | 399 | 99 | 197 | 191 | 110 |
| 32 | 368 | 177 | 227 | 137 | -176 | 439 | 120 | 230 | 221 | 127 |
| 33 | 341 | 282 | 296 | 177 | -175 | 518 | 163 | 306 | 288 | 166 |
| 34 | 200 | 238 | 240 | 137 | -199 | 407 | 140 | 257 | 229 | 126 |
| 35 | 30 | 188 | 180 | 98 | -215 | 290 | 101 | 206 | 174 | 92 |

Table 7. DIAL GAGE READINGS - SPECIMEN T-7 (Cont'd)(10⁻³ in.)

| Ld. No. | Gage Nos. | | | | | | | | | |
|------------|-----------|------|-----|-----|-----|-----|------|-----|------|-----|
| | 10 | 11 | 12 | 13 | 14 | 15 | 16 | 17 | 18 | 19 |
| 1 | 0 | 0 | 0 | 0 | 0 | 0 | 0 | 0 | 0 | 0 |
| 2 | 2 | 3 | 1 | -1 | 0 | 1 | -1 | 2 | 2 | -3 |
| 3 | 3 | 3 | 1 | -1 | 0 | 0 | -2 | 1 | 2 | -4 |
| 4 | 6 | 5 | 2 | 2 | 2 | 1 | 0 | 5 | 4 | -2 |
| 5 | 10 | 7 | 3 | 4 | 4 | 3 | 2 | 9 | 6 | -1 |
| 6 | 14 | 8 | 4 | 5 | 6 | 4 | 2 | 13 | 8 | 0 |
| 7 | 24 | 10 | 8 | 9 | 12 | 7 | 4 | 23 | 12 | 2 |
| 8 | 34 | 10 | 10 | 13 | 15 | 7 | 3 | 29 | 11 | 4 |
| 9 | 36 | 0 | 0 | 10 | 8 | -2 | -6 | 22 | -4 | -2 |
| 10 | 38 | -3 | -1 | 9 | 6 | -5 | -10 | 22 | -9 | -5 |
| 11 | 40 | -6 | -3 | 7 | 4 | -6 | -13 | 22 | -11 | -6 |
| 12 | 43 | -9 | -7 | 7 | 4 | -8 | -15 | 23 | -14 | -7 |
| 13 | 44 | -11 | -4 | 6 | 3 | -8 | -18 | 24 | -16 | -7 |
| 14 | 46 | -13 | -3 | 6 | 3 | -9 | -19 | 26 | -18 | -8 |
| 15 | 48 | -15 | -3 | 6 | 2 | -9 | -22 | 28 | -19 | -8 |
| 16 | 51 | -18 | -2 | 6 | 2 | -10 | -25 | 31 | -20 | -9 |
| 17 | 56 | -23 | -1 | 6 | 2 | -10 | -30 | 36 | -24 | -9 |
| 18 | 61 | -27 | 1 | 6 | 3 | -10 | -33 | 41 | -27 | -9 |
| 19 | 66 | -33 | 7 | 6 | 3 | -10 | -39 | 50 | -36 | -9 |
| 20 | 76 | -43 | 21 | 7 | 4 | -9 | -47 | 64 | -54 | -8 |
| 21 | 90 | -55 | 33 | 9 | 7 | -7 | -69 | 82 | -64 | -6 |
| 22 | 127 | -83 | 57 | 15 | 14 | -3 | -102 | 114 | -74 | -1 |
| 23 | 197 | -109 | 116 | 33 | 36 | 13 | -133 | 178 | -85 | 17 |
| 24 | 397 | -100 | 197 | 106 | 112 | 62 | -196 | 333 | -156 | 85 |
| 25 | 571 | -40 | 231 | 193 | 187 | 107 | -229 | 426 | 4 | 173 |
| 26 | 555 | -39 | 205 | 184 | 176 | 99 | -233 | 400 | 7 | 164 |
| 27 | 530 | -37 | 170 | 169 | 159 | 87 | -238 | 363 | 11 | 149 |
| 28 | 486 | -26 | 118 | 148 | 132 | 69 | -237 | 299 | 17 | 130 |
| 29 | 526 | -38 | 167 | 167 | 157 | 86 | -239 | 361 | 11 | 148 |
| 30 | 553 | -40 | 203 | 182 | 174 | 98 | -234 | 398 | 7 | 163 |
| 31 | 577 | -37 | 232 | 196 | 191 | 109 | -231 | 429 | 7 | 177 |
| 32 | 639 | -12 | 247 | 231 | 221 | 127 | -234 | 463 | 29 | 213 |
| 33 | 767 | 49 | 280 | 307 | 286 | 166 | -226 | 532 | 75 | 290 |
| 34 | 698 | 42 | 178 | 258 | 228 | 126 | -254 | 422 | 77 | 245 |
| 35 | 614 | 47 | 113 | 208 | 173 | 92 | -272 | 308 | 63 | 197 |

Table 7. DIAL GAGE READINGS - SPECIMEN T-7 (Cont'd)(10⁻³ in.)

| Ld. No. | Gage Nos. | | |
|------------|-----------|-----|-----|
| | S-2 | S-3 | S-4 |
| 1 | 0 | 0 | 0 |
| 2 | 10 | 0 | 18 |
| 3 | 10 | -2 | 18 |
| 4 | 11 | 0 | 18 |
| 5 | 11 | 2 | 19 |
| 6 | 11 | 4 | 18 |
| 7 | 10 | 7 | 16 |
| 8 | -1 | 8 | 9 |
| 9 | -28 | 5 | -7 |
| 10 | -34 | 4 | -13 |
| 11 | -38 | 4 | -16 |
| 12 | -41 | 3 | 18 |
| 13 | -43 | 3 | -19 |
| 14 | -45 | 3 | -20 |
| 15 | -46 | 3 | -21 |
| 16 | -48 | 3 | -19 |
| 17 | -50 | 3 | -21 |
| 18 | -50 | 3 | -21 |
| 19 | -50 | 3 | -21 |
| 20 | -50 | 4 | -21 |
| 21 | -50 | 5 | -21 |
| 22 | -48 | 9 | -18 |
| 23 | -38 | 19 | -9 |
| 24 | -9 | 62 | 19 |
| 25 | 16 | 112 | 42 |
| 26 | 11 | 107 | 38 |
| 27 | 4 | 97 | 31 |
| 28 | -7 | 80 | 21 |
| 29 | 3 | 96 | 31 |
| 30 | 10 | 106 | 38 |
| 31 | 17 | 115 | 44 |
| 32 | 127 | 136 | 54 |
| 33 | 50 | 183 | 76 |
| 34 | 26 | 147 | 53 |
| 35 | 10 | 109 | 33 |
| 36 | 123 | 335 | 147 |

Table 8: DIAL GAGE READINGS-SPECIMEN T-8(10⁻³ in.)

| Ld No. | Axial Load (kips) | Gage Nos. | | | | | | | | |
|-----------|-------------------------|-----------|-----|-----|-----|-----|-----|-----|-----|-----|
| | | 1 | 2 | 3 | 4 | 5 | 6 | 7 | 8 | 9 |
| 1 | 0 | 0 | 0 | 0 | 0 | 0 | 0 | 0 | 0 | 0 |
| 2 | 20 | -1 | -1 | -1 | -3 | -2 | -1 | -7 | -5 | -3 |
| 3 | 20 | -1 | 0 | -1 | -1 | -1 | -1 | -5 | -4 | -3 |
| 4 | 50 | 10 | 7 | 4 | 9 | 7 | 5 | 4 | 3 | 1 |
| 5 | 100 | 14 | 11 | 5 | 14 | 11 | 10 | 8 | 1 | 3 |
| 6 | 150 | 16 | 13 | 7 | 18 | 15 | 14 | 11 | 9 | 4 |
| 7 | 200 | 17 | 14 | 8 | 20 | 16 | 18 | 12 | 11 | 5 |
| 8 | 250 | 17 | 7 | 8 | 23 | 18 | 23 | 13 | 13 | 6 |
| 9 | 300 | 20 | 17 | 10 | 30 | 21 | 31 | 16 | 16 | 8 |
| 10 | 350 | 23 | 21 | 12 | 38 | 22 | 41 | 20 | 20 | 10 |
| 11 | 375 | 25 | 22 | 13 | 43 | 21 | 47 | 22 | 22 | 11 |
| 12 | 400 | 26 | 24 | 14 | 48 | 18 | 54 | 24 | 24 | 12 |
| 13 | 425 | 27 | 25 | 14 | 55 | 13 | 61 | 26 | 26 | 13 |
| 14 | 450 | 29 | 25 | 15 | 65 | 3 | 72 | 29 | 29 | 15 |
| 15 | 460 | 29 | 26 | 15 | 71 | -3 | 78 | 31 | 31 | 16 |
| 16 | 470 | 30 | 26 | 16 | 78 | -10 | 84 | 32 | 33 | 17 |
| 17 | 480 | 31 | 27 | 16 | 86 | -19 | 91 | 34 | 35 | 18 |
| 18 | 485 | 38 | 34 | 21 | 112 | -47 | 113 | 41 | 42 | 23 |
| 19 | 431 | 33 | 28 | 16 | 90 | -27 | 84 | 35 | 36 | 18 |
| 20 | 450 | 34 | 30 | 18 | 99 | -35 | 95 | 38 | 38 | 20 |
| 21 | 485 | 39 | 35 | 22 | 117 | -49 | 116 | 43 | 43 | 24 |
| 22 | 490 | 41 | 37 | 23 | 125 | -54 | 124 | 45 | 52 | 26 |
| 23 | 360 | 176 | 230 | 140 | 302 | -20 | 257 | 175 | 245 | 146 |
| 24 | 340 | 210 | 277 | 169 | 344 | -1 | 286 | 206 | 294 | 175 |
| 25 | 323 | 238 | 318 | 193 | 373 | 20 | 313 | 234 | 334 | 200 |
| 26 | 200 | 206 | 265 | 160 | 294 | -15 | 240 | 198 | 282 | 164 |
| 27 | 100 | 181 | 240 | 138 | 239 | -44 | 192 | 172 | 246 | 140 |
| 28 | 200 | 195 | 263 | 155 | 283 | -26 | 234 | 189 | 273 | 159 |
| 29 | 325 | 238 | 319 | 194 | 372 | 21 | 313 | 234 | 335 | 201 |
| 30 | 308 | 272 | 366 | 224 | 411 | 45 | 346 | 267 | 383 | 231 |
| 31 | 294 | 271 | 422 | 257 | 456 | 81 | 384 | 304 | 441 | 266 |
| 32 | 200 | 278 | 468 | 224 | 386 | 44 | 322 | 270 | 391 | 231 |
| 33 | 20 | 216 | 546 | 169 | 269 | -32 | 223 | 204 | 303 | 173 |

Table 8: DIAL GAGE READINGS-SPECIMEN T-8 (Cont'd)(10⁻³ in.)

| Ld No. | Gage Nos. | | | | | | | | | |
|-----------|-----------|-----|-----|-----|-----|-----|-----|-----|-----|-----|
| | 10 | 11 | 12 | 13 | 14 | 15 | 16 | 17 | 18 | 19 |
| 1 | 0 | 0 | 0 | 0 | 0 | 0 | 0 | 0 | 0 | 0 |
| 2 | -9 | -5 | -5 | -13 | -7 | -3 | -16 | -10 | -4 | -16 |
| 3 | -9 | -4 | -4 | -11 | -6 | -3 | -15 | -9 | -4 | -14 |
| 4 | 1 | 3 | -2 | -3 | 0 | 1 | -7 | -3 | -2 | -8 |
| 5 | 8 | 9 | -2 | 0 | 2 | 2 | -4 | -1 | -4 | -7 |
| 6 | 10 | 12 | -4 | 1 | 4 | 2 | -4 | 0 | -8 | -7 |
| 7 | 13 | 16 | -7 | 2 | 5 | 3 | -3 | 1 | -12 | -7 |
| 8 | 16 | 21 | -9 | 3 | 6 | 2 | -2 | 3 | -16 | -7 |
| 9 | 22 | 28 | -13 | 5 | 9 | 3 | 1 | 6 | -10 | -5 |
| 10 | 29 | 38 | -16 | 8 | 12 | 4 | 4 | 9 | -24 | -3 |
| 11 | 32 | 44 | -19 | 10 | 14 | 4 | 5 | 11 | -27 | -2 |
| 12 | 34 | 52 | -22 | 12 | 15 | 5 | 7 | 13 | -30 | -1 |
| 13 | 36 | 63 | -26 | 14 | 18 | 6 | 10 | 14 | -32 | -1 |
| 14 | 36 | 81 | -30 | 16 | 22 | 8 | 14 | 15 | -34 | 0 |
| 15 | 36 | 90 | -32 | 18 | 23 | 8 | 16 | 15 | -34 | 0 |
| 16 | 33 | 101 | -36 | 19 | 25 | 9 | 20 | 14 | -34 | 1 |
| 17 | 29 | 113 | -38 | 20 | 26 | 10 | 24 | 13 | -34 | 1 |
| 18 | 29 | 144 | -46 | 26 | 33 | 14 | 38 | 10 | -29 | 5 |
| 19 | 31 | 108 | -35 | 20 | 26 | 9 | 26 | 11 | -28 | 1 |
| 20 | 32 | 121 | -38 | 23 | 28 | 11 | 31 | 11 | -29 | 3 |
| 21 | 30 | 147 | -47 | 27 | 34 | 14 | 40 | 10 | -28 | 6 |
| 22 | 27 | 165 | -50 | 29 | 37 | 15 | 46 | 9 | -26 | 8 |
| 23 | 93 | 574 | 40 | 151 | 223 | 137 | 191 | 32 | 144 | 112 |
| 24 | 97 | 647 | 67 | 182 | 269 | 168 | 215 | 81 | 181 | 140 |
| 25 | 121 | 706 | 91 | 209 | 309 | 195 | 238 | 123 | 210 | 165 |
| 26 | 145 | 641 | 86 | 177 | 264 | 163 | 171 | 90 | 190 | 135 |
| 27 | 154 | 591 | 86 | 154 | 230 | 140 | 131 | 166 | 174 | 114 |
| 28 | 147 | 631 | 84 | 168 | 255 | 159 | 162 | 184 | 186 | 128 |
| 29 | 145 | 709 | 92 | 209 | 312 | 197 | 238 | 226 | 211 | 165 |
| 30 | 172 | 776 | 120 | 260 | 360 | 228 | 265 | 276 | 242 | 194 |
| 31 | 205 | 855 | 153 | 275 | 418 | 267 | 297 | 335 | 276 | 227 |
| 32 | 207 | 796 | 140 | 245 | 374 | 234 | 236 | 301 | 260 | 197 |
| 33 | 192 | 687 | 121 | 186 | 293 | 179 | 151 | 241 | 226 | 226 |

Table 8: DIAL GAGE READINGS-SPECIMEN T-8 (Cont'd) (10^{-3} in.)

| Ld No. | Gage Nos. | | | | | | | | | L ₁ ,L ₂ Avg | S-1 |
|-----------|-----------|-----|-----|-----|-----|-----|-----|-----|-----|---------------------------------------|-----|
| | 20 | 21 | E-1 | E-2 | C-1 | C-2 | C-3 | C-4 | | | |
| 1 | 0 | 0 | 0 | 0 | 0 | 0 | 0 | 0 | 0 | - | - |
| 2 | -10 | -5 | -15 | 4 | -4 | -2 | -31 | 12 | 0 | 0 | 0 |
| 3 | -9 | -5 | -13 | 4 | 0 | -2 | -27 | 12 | 0 | -1 | -1 |
| 4 | -5 | -2 | -3 | 5 | 12 | -2 | -18 | 13 | 6 | 2 | 2 |
| 5 | -4 | -1 | 2 | 6 | 16 | -2 | -17 | 13 | 14 | 6 | 6 |
| 6 | -4 | -2 | 2 | 6 | 17 | -2 | -17 | 13 | 22 | 8 | 8 |
| 7 | -3 | -2 | 2 | 6 | 16 | -2 | -18 | 13 | 28 | 10 | 10 |
| 8 | -3 | -2 | 0 | 6 | 14 | -2 | -18 | 13 | 35 | 12 | 12 |
| 9 | -1 | -1 | 0 | 7 | 16 | -2 | -17 | 13 | 42 | 14 | 14 |
| 10 | 0 | -1 | 3 | 7 | 20 | -1 | -15 | 13 | 49 | 16 | 16 |
| 11 | 1 | -1 | 3 | 7 | 21 | -1 | -14 | 13 | 53 | 16 | 16 |
| 12 | 2 | -1 | 3 | 7 | 22 | -1 | -13 | 13 | 57 | 17 | 17 |
| 13 | 2 | 0 | 3 | 6 | 23 | -2 | -13 | 13 | 60 | 18 | 18 |
| 14 | 3 | 0 | 4 | 6 | 24 | -1 | -12 | 13 | 64 | 18 | 18 |
| 15 | 3 | 0 | 5 | 7 | 24 | -1 | -12 | 13 | 66 | 19 | 19 |
| 16 | 4 | 0 | 5 | 7 | 24 | -1 | -11 | 13 | 67 | 19 | 19 |
| 17 | 4 | 0 | 5 | 7 | 24 | -1 | -11 | 13 | 69 | 20 | 20 |
| 18 | 9 | 3 | 7 | 7 | 26 | -1 | -10 | 13 | 71 | 24 | 24 |
| 19 | 4 | 0 | 7 | 6 | 24 | -2 | -12 | 13 | 66 | 20 | 20 |
| 20 | 6 | 1 | 7 | 6 | 26 | -1 | -11 | 13 | 67 | 22 | 22 |
| 21 | 9 | 3 | 7 | 6 | 26 | -1 | -10 | 12 | 72 | 25 | 25 |
| 22 | 10 | 4 | 7 | 6 | 27 | -1 | -10 | 12 | 74 | 27 | 27 |
| 23 | 167 | 123 | 22 | 22 | 30 | 12 | 0 | 24 | 94 | 100 | 100 |
| 24 | 214 | 159 | 26 | 26 | 40 | 14 | 4 | 27 | 100 | 117 | 117 |
| 25 | 255 | 190 | 30 | 29 | 42 | 18 | 6 | 31 | 108 | 133 | 133 |
| 26 | 212 | 159 | 35 | 25 | 51 | 13 | 10 | 28 | 87 | 104 | 104 |
| 27 | 182 | 136 | 35 | 22 | 50 | 12 | 10 | 25 | 68 | 86 | 86 |
| 28 | 206 | 154 | 27 | 24 | 39 | 13 | 2 | 27 | 84 | 105 | 105 |
| 29 | 258 | 192 | 29 | 29 | 42 | 18 | 6 | 31 | 107 | 134 | 134 |
| 30 | 305 | 229 | 34 | 34 | 45 | 21 | 9 | 44 | 116 | 152 | 152 |
| 31 | 362 | 270 | 39 | 38 | 50 | 24 | 13 | 38 | 128 | 172 | 172 |
| 32 | 318 | 238 | 43 | 34 | 57 | 21 | 16 | 35 | 111 | 146 | 146 |
| 33 | 244 | 183 | 36 | 26 | 48 | 16 | 12 | 99 | 71 | 101 | 101 |

TABLE 8: DIAL GAGE READINGS-SPECIMEN T-8 (Cont'd)(10⁻³ in.)

| Ld No. | Gage Nos. | | |
|-----------|-----------|-----|-----|
| | S-2 | S-3 | S-4 |
| 1 | 0 | - | 0 |
| 2 | 11 | 0 | 17 |
| 3 | 11 | -2 | 17 |
| 4 | 15 | 2 | 22 |
| 5 | 16 | 5 | 24 |
| 6 | 25 | 7 | 24 |
| 7 | 17 | 9 | 25 |
| 8 | 17 | 10 | 25 |
| 9 | 18 | 12 | 26 |
| 10 | 18 | 13 | 25 |
| 11 | 19 | 13 | 25 |
| 12 | 19 | 14 | 25 |
| 13 | 19 | 14 | 24 |
| 14 | 19 | 14 | 24 |
| 15 | 19 | 15 | 24 |
| 16 | 19 | 15 | 24 |
| 17 | 19 | 15 | 23 |
| 18 | 20 | 19 | 24 |
| 19 | 16 | 15 | 21 |
| 20 | 18 | 16 | 22 |
| 21 | 20 | 19 | 23 |
| 22 | 20 | 20 | 24 |
| 23 | 85 | 88 | 91 |
| 24 | 100 | 104 | 109 |
| 25 | 115 | 118 | 125 |
| 26 | 95 | 92 | 106 |
| 27 | 81 | 76 | 92 |
| 28 | 92 | 93 | 103 |
| 29 | 115 | 119 | 126 |
| 30 | 132 | 135 | 145 |
| 31 | 152 | 155 | 168 |
| 32 | 132 | 131 | 148 |
| 33 | 99 | 91 | 114 |

Table 9. DIAL GAGE READINGS - SPECIMEN T-9(10⁻³ in.)

| Ld. No. | Ld. (kips) | Gage Nos. | | | | | | | | |
|------------|---------------|-----------|-----|-----|----|----|-----|----|----|----|
| | | 1 | 2 | 3 | 4 | 5 | 6 | 7 | 8 | 9 |
| 1 | 0 | 0 | 0 | 0 | 0 | 0 | 0 | 0 | 0 | 0 |
| 2 | 20 | 9 | 8 | 3 | 7 | 5 | 4 | 3 | 3 | 1 |
| 3 | 20 | 9 | 7 | 4 | 7 | 4 | 4 | 3 | 2 | 1 |
| 4 | 50 | 12 | 9 | 5 | 10 | 6 | 7 | 5 | 4 | 2 |
| 5 | 100 | 14 | 11 | 7 | 13 | 7 | 10 | 7 | 5 | 2 |
| 6 | 150 | 15 | 13 | 8 | 16 | 7 | 14 | 8 | 6 | 3 |
| 7 | 200 | 15 | 13 | 8 | 18 | 6 | 18 | 8 | 6 | 3 |
| 8 | 250 | 13 | 13 | 8 | 18 | 4 | 23 | 7 | 6 | 3 |
| 9 | 300 | 15 | 15 | 10 | 24 | 4 | 31 | 9 | 8 | 5 |
| 10 | 350 | 19 | 18 | 13 | 32 | 13 | 45 | 13 | 11 | 7 |
| 11 | 375 | 20 | 21 | 17 | 37 | 0 | 68 | 15 | 15 | 10 |
| 12 | 400 | 25 | 28 | 28 | 46 | -6 | 125 | 20 | 20 | 18 |
| 13 | 410 | 30 | 37 | 38 | 53 | -5 | 159 | 23 | 27 | 26 |
| 14 | 420 | 38 | 50 | 54 | 60 | 10 | 197 | 32 | 40 | 39 |
| 15 | 380 | 69 | 101 | 116 | 92 | 56 | 316 | 62 | 89 | 98 |
| 16 | 370 | 68 | 99 | 115 | 89 | 54 | 315 | 61 | 88 | 97 |
| 17 | 350 | 64 | 95 | 111 | 84 | 51 | 309 | 58 | 84 | 93 |
| 18 | 300 | 58 | 86 | 103 | 71 | 46 | 294 | 51 | 75 | 85 |
| 19 | 250 | 53 | 78 | 96 | 62 | 42 | 279 | 46 | 68 | 78 |
| 20 | 200 | 61 | 82 | 95 | 66 | 49 | 270 | 53 | 70 | 77 |
| 21 | 150 | 58 | 76 | 88 | 59 | 48 | 256 | 50 | 65 | 72 |
| 22 | 100 | 55 | 72 | 84 | 54 | 48 | 243 | 48 | 61 | 68 |
| 23 | 50 | 51 | 66 | 81 | 50 | 47 | 229 | 44 | 57 | 63 |
| 24 | 20 | 47 | 63 | 79 | 46 | 45 | 221 | 40 | 54 | 61 |
| 25 | 0 | 47 | 64 | 81 | 54 | 53 | 223 | 57 | 63 | 67 |

Table 9. DIAL GAGE READINGS - SPECIMEN T-9 (Cont'd)(10⁻³ in.)

| Ld. No. | Gage Nos. | | | | | | | | | |
|------------|-----------|----|----|----|----|----|----|-----|----|----|
| | 10 | 11 | 12 | 13 | 14 | 15 | 16 | 17 | 18 | 19 |
| 1 | 0 | 0 | 0 | 0 | 0 | 0 | 0 | 0 | 0 | 0 |
| 2 | 1 | 3 | 2 | -1 | 1 | 1 | -3 | 1 | 2 | -6 |
| 3 | 2 | 3 | 1 | -2 | 0 | 1 | -4 | -1 | 1 | -8 |
| 4 | 4 | 4 | 2 | 0 | 1 | 1 | -3 | 1 | 1 | -8 |
| 5 | 7 | 4 | 2 | 1 | 3 | 2 | 0 | 4 | 1 | -8 |
| 6 | 9 | 4 | 2 | 2 | 4 | 3 | 1 | 7 | 1 | -8 |
| 7 | 10 | 3 | 2 | 1 | 4 | 3 | 1 | 8 | -1 | -9 |
| 8 | 12 | 1 | 1 | 1 | 4 | 3 | 3 | 11 | -2 | -9 |
| 9 | 13 | 1 | 3 | 3 | 6 | 4 | 6 | 16 | -4 | -7 |
| 10 | 17 | 1 | 4 | 7 | 9 | 5 | 11 | 23 | -6 | -5 |
| 11 | 21 | 3 | 3 | 9 | 12 | 7 | 15 | 28 | -6 | -3 |
| 12 | 33 | 12 | -2 | 14 | 18 | 13 | 22 | 33 | 0 | 1 |
| 13 | 36 | 20 | -4 | 18 | 24 | 18 | 29 | 38 | 6 | 5 |
| 14 | 62 | 12 | 9 | 28 | 38 | 28 | 32 | 66 | 8 | 12 |
| 15 | 88 | 60 | 70 | 59 | 89 | 84 | 67 | 146 | 13 | 42 |
| 16 | 84 | 62 | 69 | 57 | 88 | 83 | 66 | 140 | 13 | 42 |
| 17 | 78 | 62 | 65 | 54 | 84 | 79 | 63 | 129 | 13 | 39 |
| 18 | 67 | 62 | 56 | 47 | 74 | 71 | 55 | 106 | 12 | 31 |
| 19 | 58 | 61 | 49 | 42 | 66 | 65 | 48 | 88 | 11 | 27 |
| 20 | 62 | 65 | 47 | 47 | 66 | 63 | 49 | 80 | 14 | 31 |
| 21 | 56 | 64 | 42 | 43 | 61 | 58 | 43 | 68 | 14 | 28 |
| 22 | 52 | 61 | 39 | 41 | 57 | 55 | 38 | 59 | 14 | 25 |
| 23 | 47 | 58 | 35 | 37 | 52 | 51 | 33 | 51 | 14 | 23 |
| 24 | 44 | 55 | 33 | 35 | 49 | 48 | 31 | 47 | 14 | 23 |
| 25 | 66 | 69 | 41 | 66 | 68 | 58 | 67 | 68 | 26 | 67 |

Table 9. DIAL GAGE READINGS - SPECIMEN T-9 (Cont'd)(10⁻³ in.)

| Ld. No. | Gage Nos. | | | | | | | | | |
|------------|-----------|----|-----|-----|-----|-----|-----|-----|--|-----|
| | 20 | 21 | E-1 | E-2 | C-1 | C-2 | C-3 | C-4 | L ₁ ,L ₂ Avg. | S-1 |
| 1 | 0 | 0 | 0 | 0 | 0 | 0 | 0 | 0 | | |
| 2 | -1 | 2 | 0 | 3 | 10 | -1 | -14 | 4 | 0 | 0 |
| 3 | -3 | 0 | 2 | 3 | 13 | 2 | -11 | 4 | 0 | -3 |
| 4 | -3 | 0 | 4 | 4 | 16 | 2 | -11 | 4 | 6 | 1 |
| 5 | -2 | 1 | 4 | 4 | 18 | 1 | -11 | 4 | 16 | 5 |
| 6 | -2 | 1 | 4 | 5 | 18 | 1 | -11 | 4 | 24 | 7 |
| 7 | -3 | 0 | 3 | 5 | 17 | 1 | -14 | 4 | 32 | 9 |
| 8 | -3 | 0 | 1 | 5 | 14 | 1 | -15 | 4 | 39 | 12 |
| 9 | -1 | 1 | 2 | 5 | 16 | 1 | -13 | 4 | 46 | 13 |
| 10 | 2 | 2 | 4 | 5 | 19 | 1 | -11 | 4 | 54 | 15 |
| 11 | 4 | 3 | 5 | 6 | 21 | 2 | -10 | 4 | 58 | 16 |
| 12 | 9 | 7 | 6 | 7 | 22 | 3 | -9 | 4 | 63 | 19 |
| 13 | 13 | 11 | 6 | 8 | 24 | 4 | -9 | 5 | 66 | 22 |
| 14 | 23 | 19 | 7 | 10 | 24 | 6 | -8 | 6 | 72 | 27 |
| 15 | 70 | 66 | 11 | 19 | 28 | 12 | -4 | 12 | 80 | 39 |
| 16 | 68 | 65 | 11 | 19 | 28 | 13 | -4 | 12 | 80 | 43 |
| 17 | 64 | 62 | 11 | 18 | 27 | 12 | -5 | 12 | 77 | 41 |
| 18 | 55 | 55 | 10 | 17 | 26 | 12 | -6 | 11 | 70 | 37 |
| 19 | 48 | 50 | 9 | 16 | 25 | 11 | -7 | 10 | 62 | 33 |
| 20 | 48 | 49 | 22 | 16 | 41 | 11 | 4 | 10 | 55 | 27 |
| 21 | 43 | 45 | 22 | 15 | 41 | 11 | 4 | 10 | 47 | 24 |
| 22 | 40 | 42 | 22 | 14 | 41 | 11 | 4 | 10 | 39 | 21 |
| 23 | 36 | 39 | 23 | 13 | 38 | 11 | 5 | 10 | 29 | 16 |
| 24 | 35 | 37 | 22 | 12 | 33 | 11 | 6 | 10 | 22 | 8 |
| 25 | 63 | 51 | 51 | 10 | 36 | 13 | 70 | 6 | - | - |

Table 9. DIAL GAGE READINGS - SPECIMEN T-9 (Cont'd)(10⁻³ in.)

| Ld. No. | Gage Nos. | | |
|------------|-----------|-----|-----|
| | S-2 | S-3 | S-4 |
| 1 | 0 | - | 0 |
| 2 | 13 | 0 | 20 |
| 3 | 13 | -4 | 20 |
| 4 | 14 | 0 | 22 |
| 5 | 15 | 3 | 24 |
| 6 | 16 | 5 | 25 |
| 7 | 16 | 7 | 25 |
| 8 | 16 | 10 | 25 |
| 9 | 17 | 11 | 26 |
| 10 | 19 | 11 | 27 |
| 11 | 21 | 14 | 28 |
| 12 | 27 | 16 | 30 |
| 13 | 33 | 19 | 34 |
| 14 | 43 | 25 | 41 |
| 15 | 80 | 41 | 77 |
| 16 | 77 | 41 | 76 |
| 17 | 77 | 39 | 74 |
| 18 | 71 | 34 | 71 |
| 19 | 67 | 31 | 67 |
| 20 | 65 | 25 | 65 |
| 21 | 62 | 22 | 62 |
| 22 | 59 | 19 | 60 |
| 23 | 55 | 15 | 57 |
| 24 | 51 | 11 | 55 |
| 25 | 41 | - | 41 |

Table 10: DIAL GAGE READINGS-SPECIMEN T-10S(10⁻³ in.)

| Ld No. | Axial Load (kips) | Gage Nos. | | | | | | | | |
|-----------|-------------------------|-----------|------|----|-----|-----|------|-----|-----|-----|
| | | 1 | 2 | 3 | 4 | 5 | 6 | 7 | E-1 | E-2 |
| 1 | 0 | 0 | 0 | 0 | 0 | 0 | 0 | 0 | 0 | 0 |
| 2 | 50 | -1 | -2 | -3 | -2 | -6 | -7 | -9 | -11 | 1 |
| 3 | 50 | 0 | -2 | -3 | -2 | -6 | -7 | -9 | -10 | 1 |
| 4 | 100 | 0 | -2 | -2 | 1 | -6 | -6 | -8 | -9 | 2 |
| 5 | 150 | 0 | -1 | -2 | 2 | -6 | -6 | -8 | -9 | 2 |
| 6 | 200 | -1 | -3 | -3 | 5 | -6 | -6 | -8 | -9 | 1 |
| 7 | 250 | -1 | -4 | -3 | 9 | -6 | -5 | -8 | -8 | 1 |
| 8 | 300 | -1 | -6 | -4 | 13 | -7 | -6 | -9 | -9 | 1 |
| 9 | 350 | -2 | -10 | -4 | 19 | -7 | -7 | -9 | -8 | 0 |
| 10 | 375 | -2 | -15 | -5 | 24 | -8 | -9 | -10 | -8 | 0 |
| 11 | 390 | -2 | -18 | -5 | 27 | -8 | -11 | -10 | -8 | 0 |
| 12 | 400 | -2 | -21 | -6 | 30 | -9 | -12 | -11 | -8 | 0 |
| 13 | 410 | -2 | -25 | -6 | 33 | -9 | -14 | -11 | -9 | 0 |
| 14 | 350 | -2 | -22 | -6 | 22 | -9 | -13 | -11 | -9 | 0 |
| 15 | 390 | -2 | -25 | -6 | 30 | -9 | -14 | -11 | -9 | 0 |
| 16 | 410 | -2 | -29 | -6 | 34 | -9 | -15 | -11 | -9 | 0 |
| 17 | 420 | -2 | -33 | -6 | 37 | -9 | -16 | -11 | -9 | 0 |
| 18 | 426 | -2 | -43 | -6 | 44 | -9 | -19 | -12 | -9 | 0 |
| 19 | 431 | -2 | -52 | -6 | 50 | -9 | -22 | -12 | -9 | 0 |
| 20 | 437 | -1 | -59 | -6 | 56 | -9 | -25 | -12 | -9 | 0 |
| 21 | 442 | -1 | -65 | -6 | 62 | -9 | -28 | -12 | -9 | 0 |
| 22 | 446 | -1 | -72 | -6 | 69 | -9 | -32 | -12 | -9 | 0 |
| 23 | 452 | 0 | -77 | -6 | 76 | -9 | -37 | -13 | -9 | 0 |
| 24 | 455 | 0 | -81 | -6 | 83 | -9 | -42 | -13 | -9 | 0 |
| 25 | 461 | 1 | -85 | -5 | 91 | -9 | -48 | -13 | -9 | 0 |
| 26 | 465 | 1 | -89 | -5 | 100 | -9 | -56 | -13 | -10 | 0 |
| 27 | 467 | 2 | -93 | -4 | 113 | -9 | -74 | -13 | -10 | 0 |
| 28 | 465 | 4 | -102 | -1 | 150 | -8 | -143 | -12 | -10 | 0 |
| 29 | 472 | 7 | -108 | 2 | 178 | -6 | -169 | -10 | -9 | 0 |
| 30 | 465 | 13 | -114 | 10 | 224 | 1 | -198 | -4 | -7 | 1 |
| 31 | 443 | 39 | -128 | 41 | 378 | 30 | -275 | 22 | 1 | 6 |
| 32 | 423 | 58 | -134 | 63 | 458 | 51 | -317 | 42 | 5 | 9 |
| 33 | 373 | 56 | -131 | 61 | 445 | 50 | -310 | 41 | 5 | 9 |
| 34 | 300 | 54 | -124 | 58 | 424 | 48 | -297 | 39 | 5 | 9 |
| 35 | 200 | 56 | -111 | 59 | 401 | 48 | -275 | 40 | 12 | 9 |
| 36 | 300 | 53 | -124 | 57 | 421 | 46 | -297 | 38 | 3 | 9 |
| 37 | 423 | 58 | -134 | 63 | 456 | 50 | -318 | 36 | 3 | 10 |
| 38 | 402 | 79 | -142 | 86 | 535 | 169 | -404 | -39 | 9 | 85 |
| 39 | 399 | 89 | -146 | 98 | 571 | 84 | -373 | 78 | 11 | 15 |
| 40 | 43 | 80 | -116 | 83 | 479 | 73 | -316 | 69 | 17 | 13 |
| 41 | 0 | 83 | -105 | 87 | 472 | 78 | -497 | 73 | 33 | 11 |

Table 10: DIAL GAGE READINGS-SPECIMEN T-10S (Cont'd)(10⁻³ in.)

| Ld No. | Gage Nos. | | | | | | | | |
|-----------|-----------|-----|-----|------|--|-----|-----|------|-----|
| | C-1 | C-2 | C-3 | C-4 | L ₁ , L ₂ Avg | S-1 | S-2 | S-3 | S-4 |
| 1 | 0 | 0 | 0 | 0 | - | - | 0 | - | 0 |
| 2 | -1 | -1 | -23 | 3 | - | 0 | 13 | 0 | 18 |
| 3 | 0 | -2 | -22 | 1 | 0 | 0 | 14 | -1 | 18 |
| 4 | 3 | -2 | -20 | 1 | 6 | 2 | 14 | 0 | 19 |
| 5 | 4 | -3 | -20 | 1 | 10 | 2 | 13 | 1 | 19 |
| 6 | 3 | -3 | -20 | 1 | 15 | 2 | 12 | 1 | 18 |
| 7 | 5 | -3 | -19 | 0 | 19 | 2 | 10 | 0 | 17 |
| 8 | 4 | -4 | -20 | 0 | 23 | 0 | 6 | 0 | 15 |
| 9 | 6 | -5 | -18 | 0 | 27 | -2 | 2 | -1 | 14 |
| 10 | 5 | -6 | -19 | -1 | 29 | -3 | 0 | -2 | 12 |
| 11 | 5 | -6 | -19 | -1 | 30 | -4 | -1 | -2 | 11 |
| 12 | 5 | -6 | -19 | -1 | 31 | -4 | -2 | -2 | 11 |
| 13 | 5 | -7 | -19 | -1 | 31 | -5 | -2 | -2 | 11 |
| 14 | 5 | -6 | -19 | -1 | 29 | -5 | -3 | -2 | 11 |
| 15 | 5 | -6 | -19 | -1 | 31 | -5 | -3 | -2 | 11 |
| 16 | 5 | -6 | -19 | -1 | 32 | -5 | -3 | -2 | 11 |
| 17 | 5 | -7 | -19 | -1 | 33 | -5 | -3 | -2 | 10 |
| 18 | 5 | -7 | -19 | -1 | 33 | -5 | -3 | -2 | 10 |
| 19 | 5 | -7 | -19 | -1 | 34 | -5 | -4 | -2 | 10 |
| 20 | 5 | -7 | -19 | -1 | 35 | -5 | -4 | -2 | 9 |
| 21 | 5 | -7 | -19 | -1 | 35 | -5 | -4 | -2 | 9 |
| 22 | 5 | -7 | -20 | -2 | 36 | -5 | -4 | -2 | 9 |
| 23 | 5 | -7 | -20 | -2 | 37 | -5 | -4 | -2 | 8 |
| 24 | 5 | -7 | -20 | -2 | 37 | -5 | -4 | -2 | 8 |
| 25 | 5 | -7 | -20 | -2 | 38 | -5 | -4 | -2 | 8 |
| 26 | 5 | -7 | -20 | -2 | 39 | -5 | -4 | -2 | 7 |
| 27 | 5 | -7 | -20 | -2 | 39 | -4 | -4 | -1 | 7 |
| 28 | 5 | -7 | -20 | -1 | 41 | -1 | -2 | 1 | 7 |
| 29 | 6 | -6 | -20 | -1 | 43 | 2 | 0 | 3 | 9 |
| 30 | 7 | -5 | -18 | 0 | 47 | 8 | 5 | 9 | 15 |
| 31 | 13 | 0 | -13 | 5 | 60 | 37 | -29 | 37 | 38 |
| 32 | 16 | 3 | -10 | 8 | 69 | 56 | 44 | 55 | 54 |
| 33 | 15 | 3 | -10 | 8 | 66 | 54 | 42 | 53 | 54 |
| 34 | 16 | 2 | -9 | 7 | 60 | 50 | 40 | 50 | 53 |
| 35 | 23 | 3 | -3 | 7 | 51 | 43 | 41 | 43 | 53 |
| 36 | 14 | 2 | -12 | 7 | 59 | 51 | 39 | 50 | 52 |
| 37 | 14 | 3 | -11 | 8 | 69 | 57 | 44 | 57 | 54 |
| 38 | 19 | 6 | 132 | -123 | 81 | 98 | 234 | -153 | 40 |
| 39 | 20 | 8 | -6 | 18 | 86 | 89 | 70 | 87 | 82 |
| 40 | 27 | 8 | 2 | 12 | 50 | 61 | 64 | 60 | 74 |
| 41 | 62 | 7 | 20 | 8 | - | - | 48 | - | 58 |