

## Location Overview

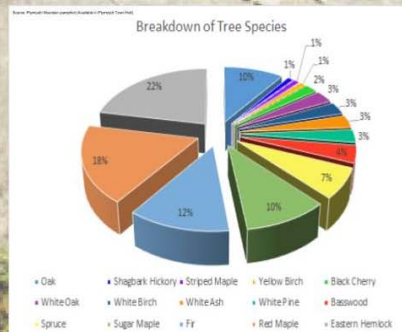
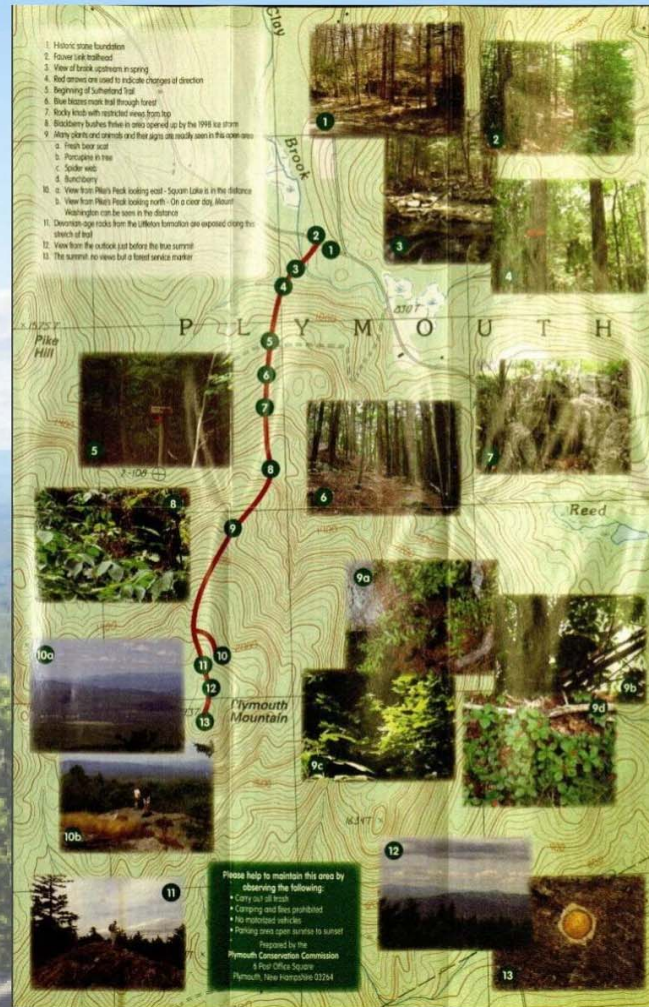
Plymouth Mountain and Fauver Preserve are located in Plymouth, just northeast of Newfound Lake. The 1,100 acre Plymouth Mountain parcel borders the Fauver Preserve. The Fauver Preserve provides access to Plymouth Mountain through a 0.4 mile scenic trail. From there trails continue for an additional 2.1 miles of steeper climbing, until the 2,193' peak is reached. What is unique about this mountain is that there are two viewpoints at the summit that are comparable to some of the local 4,000 footers.

## Community Forests

Community Forests offer a huge value to their local communities in the form of ecosystem services. Ecosystem services are goods and services provided by a natural space to people. There are several kinds of ecosystem services provided by Plymouth Mountain and the Fauver Preserve for our local community that can be calculated as dollar value savings.

Forests in Plymouth Mountain and the Fauver Preserve sequesters **carbon dioxide** from our atmosphere with a benefit of **\$277,101 per year**. Overall there will be **\$6,986,596 of carbon dioxide** stored by the trees over the course of their lifetime. Further benefits include removing **particulate matter** (such as dust and smog) from the atmosphere at a rate of **\$15,090 per year**, removing **ozone** at a rate of **\$5,402 per year**. Other atmospheric pollutants the forest removes include: carbon monoxide, nitrogen dioxide and sulfur dioxide.

Some further unexploited ecosystem services that Plymouth Mt. and the Fauver Preserve might provide have to do with education of the public. Currently there is a small information kiosk at the trailhead. We could expand education about the area by conducting informative tours of the area for local schools. This would educate students about the value of ecosystem services, while getting them out in the ecosystem to enjoy it.



## Features & Property Details

**Description:** Fauver Preserve is a 104.6 acre parcel, appraised in 1989 at \$160,000, and borders Plymouth Mountain. Plymouth Mountain is a 1,100 acre conservation area, appraised at \$200,000 in 1991. These appraisal values do not reflect the value of ecosystem services. The Conservation Commission manages all trails while Green Acre Woodlands Inc. manages Plymouth Mountain as a long-term woodland investment. Since the 1980s, both properties has been managed for timber. Plymouth Mountain is owned and logged by Green Acre Woodlands Inc, and the Fauvers own and log Fauver Preserve. Each has a timber management plan, and must submit an Intent to Cut, as well as a forest inventory and demonstrated Best Management Practices. The conservation easement is held by the town of Plymouth.

**History:** In 1991 the Fauver Preserve, Plymouth Mountain, and Walter Newton Area were all conserved through a grant from the NH Land Conservation Investment Program and donations from Alfred Fauver, Mr. and Mrs. Walter, and Suzanne Newton. Until recently, the wooded summit of Plymouth Mountain was reached by the Sutherland trail in Hebron. The Fauver Link Trail, off of Old Hebron Road in Plymouth, now allows hikers to reach the summit by scenic Pike's Peak.

**Size:** Hikers can begin on the scenic 0.4 mile Fauver Link Trail in the Fauver Preserve, which is. This connects to the Sutherland Trail on Plymouth Mountain, a conservation area of 1,100 acres bordering the Fauver Preserve. This trail passes by Pike's Peak, which gives an unsurpassable view of the north, south, and east, and Newfound Lake. The true summit is wooded, with an official marker.

**Trail Info:** Moderate difficulty, with 2.5 miles of trails. Hiking, hunting, cross-country skiing, fishing, and any other non-mechanical uses are welcome. Camping, biking, and fires are not allowed.

**How to Get There:** The Fauver Link Trail can be reached by a trailhead on Texas Hill Road in Plymouth. The parking lot, which is plowed in winter, currently lacks a sign.

**Features:**  
**Natural:** Blackberry bushes in area opened up by 1998 ice storm. Many of the American Beech trees on site are afflicted with **Beech Bark Disease**, caused by a non-native insect and native fungus.  
**Geological:** Exposed Devonian age rocks from the Littleton formation are along the trail by the summit  
**Botanical:** A wide range of dry and moist soils from streamside to mountaintop allows many species to thrive  
**Cultural:** A historic stone foundation lies near the start of the Fauver Trail

**Accessibility:** Fauver Link Trail offers an information kiosk by the trailhead. The Fauver Link Trail meets up with the Sutherland trail at an old logging road, and signs are placed along the trail at important junctions. Trails are blazed in blue and yellow.

**Interesting Biota:** Plymouth Mountain boasts several vernal pools with one by Sutherland Trail, while the Fauver Preserve has a large off-trail wetland.

**Interesting Wildlife:** Lynx, Fishers, Bear, and Moose are all found onsite. Lady Slippers and a large variety of boreal forest and ecotone species are found here as well.

**Wildlife Action Plan:** New Hampshire's Wildlife Action Plan for Northern Hardwood-Conifer Forests and Hemlock Hardwood Pine Forests involves creating local conservation plans including protection against fragmentation and sustainable forestry.

**Sources:**  
 Hans, Lars, Kees, Van Kesteren, Rudolf B. De Groot, and Elio C. Van Ierland. "Eggsal stores, stabilizers and the valuation of ecosystem services." *Ecological Economics* 17.2 (2006): 209-28. Web.  
 Department, NH Fish and Game. "Habitat Types and Species." *New Hampshire Fish and Game Department*. N.H. Department of Fish and Game, n.d. Web. 24 Apr. 2017.  
 http://www.fishandgame.com/Resource/Resource.aspx?ResourceID=2113.0735.pdf  
 Plymouth Mountain pamphlet. Available at Plymouth Town Hall  
 Photo by Adam Guy

