

Otterbein University

## Digital Commons @ Otterbein

---

1907-1958 Productions

Productions 1907-1961

---

4-7-1951

### John Loves Mary

Otterbein University

Follow this and additional works at: [https://digitalcommons.otterbein.edu/production\\_1907-1958](https://digitalcommons.otterbein.edu/production_1907-1958)



Part of the [Acting Commons](#), [Dance Commons](#), and the [Theatre History Commons](#)

---

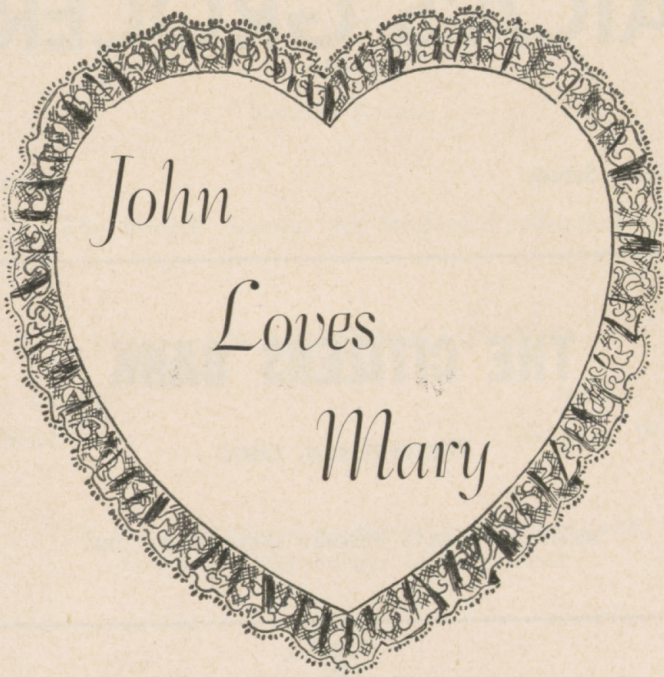
#### Recommended Citation

Otterbein University, "John Loves Mary" (1951). *1907-1958 Productions*. 65.  
[https://digitalcommons.otterbein.edu/production\\_1907-1958/65](https://digitalcommons.otterbein.edu/production_1907-1958/65)

This Book is brought to you for free and open access by the Productions 1907-1961 at Digital Commons @ Otterbein. It has been accepted for inclusion in 1907-1958 Productions by an authorized administrator of Digital Commons @ Otterbein. For more information, please contact [digitalcommons07@otterbein.edu](mailto:digitalcommons07@otterbein.edu).

# CAP and DAGGER

PRESENTS



April 7, 1951

*The Fourth Annual  
All-Student Production*



SHOE HOSPITAL

**DR. WILSON, S. D.**

I Doctor Shoes, Heel Them,  
attend their dyeing and save their  
soles.

24 W. MAIN ST.

*Compliments of*

**Suburban Cleaners**

CLOTHES  
FULLY  
INSURED

Call 2-2369

7 N. State St.

# RAICA'S GROCERY

1 North State Street

Phone 2-2316

## THE CITIZENS BANK

WESTERVILLE, OHIO

MEMBER FEDERAL DEPOSIT INSURANCE CORP.

**E. J. Norris & Son**

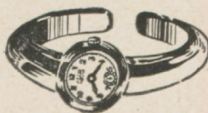
SHOES

AND

CLOTHING

*38 Years Serving  
Otterbein Students*

**Farnlacher Jewelers**



REPAIR

Corner Main and State

# Cap and Dagger

Of Otterbein College, Westerville, Ohio

PRESENTS

# John Loves Mary

A Comedy in Three Acts

by

Norman Krasna

The Fourth Annual All-Student Production

Directed by MYFANWY LINTNER

*Technical Director*

DON WALTER

*Business Manager*

GLENN WAGGAMON

*This play is produced by special arrangement with  
Dramatists Play Service of New York*



April 7, 1951

WESTERVILLE HIGH SCHOOL AUDITORIUM



# UNIVERSITY BOOKSTORE

HALLMARK GREETING  
CARDS FOR  
ALL OCCASIONS

## HOME SUPPLY

*"Your Flooring  
and  
Decorating Headquarters"*

8 E. Main St. Phone 2-3339

## CROSE



25 N. State St.

## JOE MORRIS

*The Real Estate Man*

34 North State St.  
Phone 2-2139

## ISALY'S

ICE CREAM AND DAIRY PRODUCTS

*Make Isaly's Your Stop  
For Snacks After  
Every Show*

ISALY'S ICE CREAM  
Ends The Quest  
For The Best



*The Best of Meats*

## SCHNEIDER'S MARKET, Inc.

South State Street and College Ave.

Phone 2-2101 or 2-2286



## THE CAST FOR "JOHN LOVES MARY"



Chuck Myers, Bob McMullen, Bob Moore, Lew Bell, Bohse Fulton,  
John Hammon, Bobbie Finkle, Mary Ellen Matson, Glenna Keeny,  
Roger Day

### The Cast in Order of Appearance

Mary McKinley . . . . .	Mary Ellen Matson
Oscar Dugan . . . . .	John Hammon
Fred Taylor . . . . .	Bohse Fulton
John Lawrence . . . . .	Bob McMullen
Senator James McKinley . . . . .	Chuck Myers
Mrs. Phyllis McKinley . . . . .	Glenna Keeny
Lt. Victor O'Leary . . . . .	Roger Day
George Beechwood . . . . .	Lew Bell
Lily Herbish . . . . .	Bobbie Finkle
Harwood Biddle . . . . .	Bob Moore

The action of the play takes place in the living room of the apartment of Senator James McKinley in the St. Regis Hotel, New York. Spring, 1946.



## The Synopsis of Scenes

### ACT ONE

Monday Afternoon. 3 P. M.

### ACT TWO

Tuesday Morning. 11 A. M.

### ACT THREE

Scene One: Immediately afterward.

Scene Two: Three hours later.

*The Best in Flowers From*

## MAPLE LEE FLOWERS

14 S. State St.

Westerville

and

615 High St.

Worthington

## SKA-TEEN

ROLLER SKATING ON  
YOUTH CANTEEN BASIS

College Ave. and R. R.

Phone 2-2387

*BOWL AT*

## Schneider and Beaver Lanes

SNACK BAR

Phone 2-2169

GEORGE SCHNEIDER - JOHNNIE BEAVER

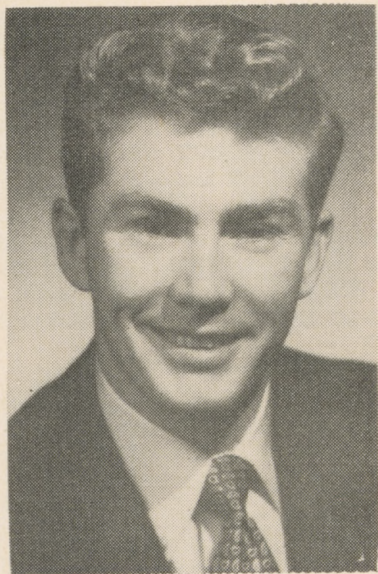
## PATTERSON DRUG STORE

Phone 2-2392

23 N. State St.



# Who's Who . . . . . In The Cast



**Bob McMullen**



**Mary Ellen Matson**

**MARY ELLEN MATSON '51 (Mary McKinley)** is from Marion, Ohio, where she graduated from Marion Harding High School in the class of 1947. While attending Marion Harding, Mary Ellen had the leading role in *MAD MARCH HEIRS* and also in the operetta *OH DOCTOR*. Here at Otterbein she has worked backstage and was on the properties committee for *THE WINSLOW BOY*. This is her first appearance on Otterbein's stage.

**BOB McMULLEN '53 (John Lawrence)** is a transfer student from Ohio State University. He hails from Hillsboro, Ohio, where he graduated in 1946 from Hillsboro High School. While in high school Bob appeared in several plays, one of which was *DAYS WITHOUT DADDY*. He was also active in backstage work, and has had experience as a business manager. *JOHN LOVES MARY* is also Bob's first stage appearance at Otterbein.

**CHUCK MYERS '51 (Senator McKinley)** graduated from Westerville High School in 1947. During his high school days he appeared in many plays, including *THE BARRETTS*, *A MIND OF HER OWN*, and *SMILING THROUGH*. Since attending Otterbein he has been seen in *TWELFTH NIGHT* and *THE WINSLOW BOY*.

**GLENN A KEENEY '51 (Mrs. McKinley)** also graduated from Westerville High School in 1947. In high school Glenna appeared in her Sophomore and Junior Class Plays. At Otterbein she has been in a play production class presentation and was business manager for *THE FOOL*.

**BOHSE FULTON '51 (Fred Taylor)** is from Altoona, Pennsylvania. He graduated from Alexander M. Scott High School, North Braddock, in 1947. In high school Bohse had some experience in backstage work. Since attending Otterbein he has appeared in a play production class presentation.



**BOBBIE FINKLE '53 (Lily Herbish)** is a graduate of Reynoldsburg High School, Reynoldsburg, Ohio. Before she graduated in 1949 she appeared in the Senior Class Play. Since Bobbie has been at Otterbein she played in ON WHITMAN AVENUE, and was co-director of the one act play NOT TONIGHT.

**BOB MOORE '54 (General Biddle)** is a National Thespian from Middletown High School, where he graduated in 1950, appearing in OUT OF THE FRYING PAN, AH WILDERNESS, and ANTIGONIE. This is Bob's first play at Otterbein.

**JOHN HAMMON '52 (Oscar Dugan)** graduated from Fairmont High School, Dayton, Ohio in 1948. At Fairmont he appeared in BLITHE SPIRIT, BEAUTY AND THE BEEF, and ARSENIC AND OLD LACE. Since he has been at Otterbein, John has appeared in one student production BUT NOT GOODBYE, and served as business manager for another, MY MAN GODFREY.

**ROGER DAY '51 (Lt. Victor O'Leary)** is from Sunbury, Ohio, where he graduated in 1947. Before graduation, Rog had roles in PECK'S BAD BOYS, and two other productions. Since attending Otterbein, he has been seen in BUT NOT GOODBYE, and was co-director of the one act play NOT TONIGHT.

**LLEWELLYN BELL '52 (George Beechwood)** is another Pennsylvanian. He graduated in 1938 from William Penn Senior High School, York, Pennsylvania. This is Lew's first stage appearance.

*Compliments of*

**MORELAND FUNERAL  
HOME**

Otterbein News Every Week

IN THE

**PUBLIC OPINION**

*PRINTERS*

*PUBLISHERS*

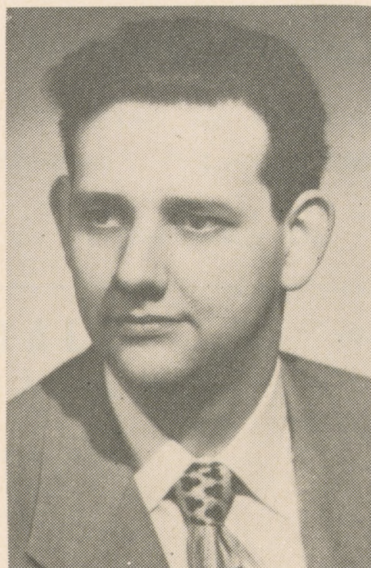
Monroe Courtright, '40



## Who's Who . . . . . *On The Staff*



**Myfanwy Lintner**



**Don Walter**

**MYFANWY LINTNER '51, Directress**, graduated from Johnstown High School, Johnstown, Ohio, in 1947 where she became a member of the National Thespian Society. While in high school, she had roles in the Junior and Senior Class Plays and the Thespian Play. Since entering Otterbein, Myfanwy has appeared in several one-act plays and has portrayed a role in *MY MAN GODFREY* and had the feminine leads in *THE FOOL* and *THE WINSLOW BOY*.

**DON WALTER '51, Technical Director**, is from Detroit, Michigan, but graduated in 1947 from Castle Heights Military Academy, Lebanon, Tennessee. While there he appeared in *THE HASTY HEART*. Since he has been at Otterbein, Don has had roles in *THE FOOL* and *MY MAN GODFREY*. He was the technical director for *THE WINSLOW BOY*, and directed the one act play *SCRAMBLED EGGS*.

**GLENN WAGGAMON '51, Business Manager**, graduated from Chippewa High School, Doylestown, Ohio, in 1946. While in high school, Glenn appeared in *THE LATE CHRISTOPHER BEAN*. Since coming to Otterbein he has been seen in *THE FOOL*, *OUR TOWN*, and *TWELFTH NIGHT*, and was ticket chairman for *THE WINSLOW BOY*.



## The Production Staff

Stage Manager . . . . .	Rudy Fedorchak
Stage Crew . . . . .	Jim Shand Chuck Simpson Hal Gelman The Stage Craft Class
Lighting . . . . .	Bill Hunt, Technician Mike Phillips Tom Hammond Jim Yost Tink Sanders Phyllis Shultz
Publicity . . . . .	Allen Burris, Chairman Francis Pottenger Jim Rea
Tickets . . . . .	Ford Swigart, Chairman Mary Lou Poorman John Hammon Allen Burris
Properties . . . . .	Lloyd Lewis, Chairman Phyllis Brockett Dick Rosensteel
Wardrobe Mistress . . . . .	Mary Lou Poorman
Costume Assistant . . . . .	John Matthews
Make-up . . . . .	Phyllis Weygandt Margie Claar Lloyd Lewis
Programs . . . . .	Leon Horn, Chairman Dick Rosensteel Jim Smith Ford Swigart Glenn Waggamon
Reception . . . . .	Margie Claar Phyllis Brockett

## Credits and Acknowledgements

McVay Furniture Company  
 Mr. Sanders Frye  
 The Tan and Cardinal  
 Col. Samuel Thackery  
 Bill Drenten  
 Greens Studio  
 The Public Opinion  
 Westerville High School  
 Mr. Richard Cates





## Talbot's Flowers

Phone 2-4151

260 S. State St.

ROBERT VAUGHN      PHONE 2-2233

## Westerville Cleaners

CLEANING and PRESSING  
REPAIRING      LAUNDRY SERVICE

16 West College Ave.

## STOCKDALE

Memorial Funeral Home, Inc.

24 Hour Ambulance Service

Call 2-2121 or 2-2291

69 South State Street

Charles M. Stockdale, *Pres.*      Frank E. Hill, *Treas.*      Dave Park, *Sec'y.*



## Paul's Market

399 S. State

Phone 2-2226

## *Laurette's*

*The Shop For  
The College Co-ed*

10 N. State St.      Phone 2-2312

## CELLAR LUMBER COMPANY

*Honest, Courteous Service Builds Our Business*

Phone 2-2323

134 E. College Ave.



# Green's Studio

*Robert Daugherty, '40, Owner*



**COCKRELL'S**  
GREENHOUSES AND FLORAL SHOP  
6963 S. State St.  
Phone 2-2276

## **Western Auto Associate Store**

*Everything for the Auto*

**Radio and Television**

50 N. State St.

Phone 2-2262

## **BRINKMAN'S REXALL DRUG STORE**

Sickroom Supplies



Prescriptions

2 South State St.

Phone 2-2148

## **Westover Press Service**

Personal Stationery Printed

*Reasonable Rates*

22 W. Main St.

LET'S MEET AT

# **LINK'S**

AFTER THE PLAY

**DINNERS**

**SANDWICHES**

**SODA FOUNTAIN**