



OPEN ACCESS

## CLINICAL SCIENCE

# Predictors of disease worsening defined by progression of organ damage in diffuse systemic sclerosis: a European Scleroderma Trials and Research (EUSTAR) analysis

Mike Becker,<sup>1</sup> Nicole Graf,<sup>2</sup> Rafael Sauter,<sup>3</sup> Yannick Allanore,<sup>4</sup> John Curram,<sup>5</sup> Christopher P Denton,<sup>6</sup> Dinesh Khanna,<sup>7</sup> Marco Matucci-Cerinic,<sup>8</sup> Janethe de Oliveira Pena,<sup>9</sup> Janet E Pope,<sup>10</sup> Oliver Distler,<sup>10</sup> EUSTAR Collaborators

**Handling editor** Prof Josef S Smolen

► Additional material is published online only. To view please visit the journal online (<http://dx.doi.org/10.1136/annrheumdis-2019-215145>).

For numbered affiliations see end of article.

**Correspondence to**

Dr Oliver Distler, Department of Rheumatology, University Hospital Zurich, Zurich 8091, Switzerland; [oliver.distler@usz.ch](mailto:oliver.distler@usz.ch)

Received 29 January 2019

Revised 29 April 2019

Accepted 17 May 2019

**ABSTRACT**

**Objectives** Mortality and worsening of organ function are desirable endpoints for clinical trials in systemic sclerosis (SSc). The aim of this study was to identify factors that allow enrichment of patients with these endpoints, in a population of patients from the European Scleroderma Trials and Research group database.

**Methods** Inclusion criteria were diagnosis of diffuse SSc and follow-up over 12±3 months. Disease worsening/organ progression was fulfilled if any of the following events occurred: new renal crisis; decrease of lung or heart function; new echocardiography-suspected pulmonary hypertension or death. In total, 42 clinical parameters were chosen as predictors for the analysis by using (1) imputation of missing data on the basis of multivariate imputation and (2) least absolute shrinkage and selection operator regression.

**Results** Of 1451 patients meeting the inclusion criteria, 706 had complete data on outcome parameters and were included in the analysis. Of the 42 outcome predictors, eight remained in the final regression model. There was substantial evidence for a strong association between disease progression and age, active digital ulcer (DU), lung fibrosis, muscle weakness and elevated C-reactive protein (CRP) level. Active DU, CRP elevation, lung fibrosis and muscle weakness were also associated with a significantly shorter time to disease progression. A bootstrap validation step with 10 000 repetitions successfully validated the model.

**Conclusions** The use of the predictive factors presented here could enable cohort enrichment with patients at risk for overall disease worsening in SSc clinical trials.

**INTRODUCTION**

Systemic sclerosis (SSc), a rheumatic disease characterised by autoimmunity, tissue fibrosis and vasculopathy, has a high mortality rate compared with other rheumatic diseases.<sup>1,2</sup> Mortality in SSc is the result of organ involvement, with lung disease (either interstitial lung disease or pulmonary arterial hypertension (PAH)) being the most prominent risk factor for death.<sup>3</sup> Skin fibrosis is a hallmark of SSc and is easily measurable in a standardised manner using the modified Rodnan skin score (mRSS), which has good inter-rater and intra-rater variability.<sup>4-7</sup> The mRSS also correlates with

**Key messages****What is already known about this subject?**

- Capturing the complexity and heterogeneity of systemic sclerosis in clinical trials is difficult.
- The widely used modified Rodnan skin score failed in recent clinical trials as a surrogate parameter for universal disease progression. Using worsening of organ involvement as a study endpoint is impeded by its relative sparsity.

**What does this study add?**

- We have identified factors that are associated with disease progression and lead to organ failure.

**How might this impact on clinical practice or future developments?**

- The factors identified here could be used to select patients at risk of progressive organ involvement for clinical trials.
- Identifying patients at risk also has implications for clinical care.

organ involvement; the rate of progression of skin thickness can predict early mortality in patients with diffuse SSc (dcSSc), while early worsening of mRSS (within 12 months) is associated with poorer survival and increased disease progression.<sup>8,9</sup> Consequently, the mRSS is widely used as a primary outcome parameter in clinical trials of patients with dcSSc or as a part of composite indices.<sup>9-12</sup> However, skin fibrosis is only a surrogate marker for overall disease progression,<sup>13</sup> and the use of more relevant endpoints, such as worsening organ function or death, is desirable for clinical trials and is increasingly requested by regulatory authorities. One methodological limitation is that these events are relatively rare in unselected patients. In clinical trials of dcSSc, enriching a dataset with these endpoints requires identification of predictive factors associated with organ worsening or death; these factors can then be considered as inclusion criteria for clinical trial designs with enriched patient populations. We



© Author(s) (or their employer(s)) 2019. Re-use permitted under CC BY. Published by BMJ.

**To cite:** Becker M, Graf N, Sauter R, et al. *Ann Rheum Dis* Epub ahead of print: [please include Day Month Year]. doi:10.1136/annrheumdis-2019-215145

aimed to identify predictive factors for disease worsening and death in patients with dcSSc by analysing data from the large European Scleroderma Trials and Research (EUSTAR) group database.

## METHODS

### Patients and study design

This study used prospectively collected data from the EUSTAR database. The structure of the EUSTAR database and minimum essential dataset have been described previously.<sup>14 15</sup>

Data from patients with dcSSc (as defined by LeRoy *et al*)<sup>16</sup> were included if they had a visit in 2009 or later (defined as the baseline visit) and either a follow-up visit or death within 12±3 months after baseline. Twelve months was chosen as the primary analysis point, as this reflects the usual study duration of SSc trials targeting fibrosis.

### Definition of disease worsening

An expert group (YA, MM-C, CPD, OD, JP) defined the combined endpoint of disease worsening, which was agreed on by nominal group technique. A patient was considered to have organ worsening if he or she fulfilled any of the following criteria within 12±3 months of the baseline visit: new-onset renal crisis; decrease in forced vital capacity (FVC)≥10%; new left ventricular ejection fraction (LVEF)<45% or decrease in LVEF by>10% for patients with baseline LVEF<45%; new-onset echocardiography-suspected pulmonary hypertension (PH) (as defined by the treating physician); or death. Variable definitions, recoding of variables and handling of missing values are described in the online supplementary appendix.

### Statistical analysis

For variables with >10% missing data, the missing not at random (MNAR) assumption was explored where possible, but the analyses did not support the assumption of MNAR, instead random missingness was assumed (see online supplementary appendix for more details).

Missing data were imputed on the basis of multiple imputation (MI) using the R package *mice*. For the imputation model, all 42 variables from the full model, including the dependent variable ‘disease worsening’, were included. With the function *quickpred*, predictors were automatically selected (1) with an absolute correlation with the target variable of ≥0.2 and (2) with a proportion of usable cases (ie, cases with missing data on the target variable that had observed values on the predictor) of ≥0.25. The order of variable imputation was defined according to the number of missing cases. Depending on the scale of the target variable, MI was performed using either linear regression (*norm.nob*), logistic regression (*logreg*) or polytomous, ordered regression (*polr*) for factors with more than two levels. Based on the fraction of missing information,<sup>17</sup> 100 imputed datasets were generated. Further details of statistical analysis are described in the online supplementary appendix.

### Patient and public involvement

This was a retrospective study using a registry with patient data from different primary investigation sites. However, neither direct patients nor the public were involved. Study results will be disseminated within patient communities via the Federation of European Scleroderma Associations and its patient congresses.

## RESULTS

### Baseline characteristics

In total, 1451 patients met the inclusion criteria at the time of data extraction (10 February 2016). Of these, 706 had data on the presence of the combined endpoints available and were included in the analysis. Patient baseline characteristics are shown in table 1, with a comparison between the 706 included patients and the 745 excluded patients shown in the online supplementary table S2. There was no major difference between these groups, although numerically, patients without missing data had a slightly higher disease duration and more renal crises but less frequent active disease. Hence, there was no major selection bias. However, a bias based on unmeasured variables cannot be excluded.

### Predictive factors for disease worsening

Of 706 patients with available data, 228 (32.3%) fulfilled the pre-defined criteria for disease worsening within 12±3 months of the baseline visit. The most common forms of disease worsening were deterioration of FVC and death (table 2). Renal crisis and worsening of LVEF were rare.

Figure 1 presents the multiple imputation—least absolute shrinkage and selection operator (MI-LASSO) regression coefficients based on averages across 100 imputed datasets, presented on a logarithmic OR scale evaluated for 24 varying penalisation factors (lambda). The regression coefficient estimates at each selected penalisation factor indicate the extent to which they contribute to a change in the probability of disease progression in terms of ORs in comparison to the population mean. The smaller the lambda, the larger the penalisation; therefore, average regression coefficients are shrunk towards zero. The model with the smallest Bayesian Information Criterion (BIC) was chosen as the final model. If a regression coefficient was shrunk to zero, the predictor variable was no longer retained in the final model.

Table 3 shows the final model, with OR and 95% CI based on all 100 imputed datasets. All ORs were >1 and, therefore, positively associated with disease worsening. There was substantial evidence for a strong association between disease progression and age, active digital ulcers (DUs), C-reactive protein (CRP) elevation, lung fibrosis and muscle weakness. The p values for pericardial effusion, proteinuria and significant dyspnoea suggest only weak or very weak evidence for an association with disease worsening.

As muscle weakness was a non-objectively defined, patient-reported parameter, we aimed to further characterise patients with this symptom. In patients defined as having muscle weakness, the frequency of creatine kinase (CK) elevation was higher than in those without weakness (19.9% (n=31/156) vs 6.2% (n=32/513); p<0.0001 by  $\chi^2$  test); a higher frequency of gastrointestinal symptoms (39.0% (64/164) vs 21.1% (113/535); p<0.0001 by  $\chi^2$  test); and a higher number of deaths (25.0% (41/164) vs 8.9% (48/537); p<0.0001 by  $\chi^2$  test) were also observed in those with muscle weakness compared with those without.

### Applicability and feasibility of the predictors retained in the final model

To illustrate the impact of the final model on the probability of increasing the number of patients with worsening organ function in a given selection of patients, we calculated the outcome probabilities for combinations of risk factors from the final model in the 706 study patients (table 4). As suggested by the

**Table 1** Clinical and demographic characteristics of the 706 patients from the EUSTAR database included in the analysis

Characteristics	Patients (n=706)	Available data (% patients)
<i>Demographic</i>		
Male sex	172 (24.4)	100
Age, mean±SD	52.9±12.9	100
Disease duration, months (mean±SD)	101.1±94.0	94.1
Body weight, kg (mean±SD)	64.6±13.4	97.2
<i>Laboratory parameters</i>		
ANA positive	657 (94.4)	98.6
ACA positive	48 (7.1)	96.3
Anti-Sci70 positive	414 (60.2)	97.5
Anti-U1RNP positive	27 (4.7)	81.3
Creatine kinase elevation	64 (9.5)	95.2
Proteinuria	57 (8.4)	95.6
Hypocomplementaemia	39 (6.3)	88.1
ESR>20 mm/1 hour, mean±SD	25.3±20.6	94.5
CRP elevation	190 (27.7)	97.0
<i>Vascular</i>		
Raynaud's present	683 (96.7)	100
DU ever	266 (38.1)	98.9
Active DU*	126 (18.1)	98.7
Scleroderma (puffy fingers)	303 (44.2)	97.2
Worsening of finger vascularisation within the last month	162 (23.3)	98.3
<i>Musculoskeletal</i>		
Tendon friction rubs	89 (12.8)	98.3
Joint synovitis	108 (15.4)	99.3
Joint contractures	310 (44.4)	98.9
Muscle weakness	164 (23.4)	99.3
<i>Skin</i>		
mRSS, mean±SD	14.2±9.1	93.2
Worsening of skin changes within the last month	141 (20.3)	98.3
Skin progression rate, mean±SD	0.6±1.7	88.2
<i>Cardiopulmonary</i>		
Arterial hypertension	154 (21.9)	99.6
Pericardial effusion	58 (8.9)	92.5
Echocardiography-suspected PH	113 (16.3)	98.0
Conduction blocks	104 (15.6)	94.2
Abnormal diastolic function	170 (25.0)	96.2
Lung fibrosis†	131 (19.7)	94.3
Significant dyspnoea	91 (13.2)	97.7
DLCO, %predicted (mean±SD)	64.1±20.2	94.1
FVC, %predicted (mean±SD)	86.4±21.3	96.5
FEV <sub>1</sub> , %predicted (mean±SD)	85.0±18.7	78.3
TLC, %predicted (mean±SD)	84.2±19.9	66.1
LVEF, %predicted (mean±SD)	61.7±7.0	96.5
<i>Gastrointestinal</i>		
Oesophageal symptoms	455 (64.5)	99.9
Stomach symptoms	192 (27.4)	99.3
Intestinal symptoms	177 (25.2)	99.3
<i>Kidney</i>		
Renal crisis	34 (4.8)	99.4
<i>Disease activity</i>		
Active disease‡	191 (30.7)	88.1

Continued

**Table 1** Continued

Characteristics	Patients (n=706)	Available data (% patients)
Data are n (%) unless otherwise stated. (Percentages with characteristics were calculated from numbers of patients with data available). Clinical manifestations were defined according to the EUSTAR definitions. <sup>15</sup> Presence of significant dyspnoea was based on the judgement of the treating physician.		
*Active DUs was a composite endpoint that was considered positive if either DU (from the minimal essential dataset) or digital gangrene was present.		
†Lung fibrosis was defined as FVC<60% or FVC<70% and presence of lung fibrosis on high-resolution computed tomography.		
‡Active disease was defined as score >3 calculated according to the EScSG disease activity indices for SSc. <sup>38</sup>		
ACA, anti-centromere antibody; ANA, anti-nuclear antibody; CRP, C-reactive protein; DLCO, diffusion capacity of the lung for carbon monoxide; DU, digital ulcer; ESR, erythrocyte sedimentation rate; EScSG, European Scleroderma Study Group; EUSTAR, European Scleroderma Trials and Research; FEV <sub>1</sub> , forced expiratory volume after 1 s; FVC, forced vital capacity; LVEF, left ventricular ejection fraction; mRSS, modified Rodnan skin score; PH, pulmonary hypertension; TLC, total lung capacity.		

high ORs for lung fibrosis and CRP elevation (see [table 3](#)), these two factors alone increased the probability for an event during the observation time to 52.0% in patients aged 60 years and 57.9% in patients aged 70 years ([table 4](#)) compared with 32.2% for the overall study population. If patients had lung fibrosis, muscle weakness, DU and CRP elevation, the probability for an event was 74.5% at 60 years and 78.8% at 70 years ([table 4](#)). However, depending on the number of predictors included, the number of selected patients decreased, for example, the optimal combination for maximum enrichment left only eight patients who had lung fibrosis, muscle weakness, CRP elevation and present DUs in our study population ([table 4](#)).

### Impact of predictors from the final model during long-term observation

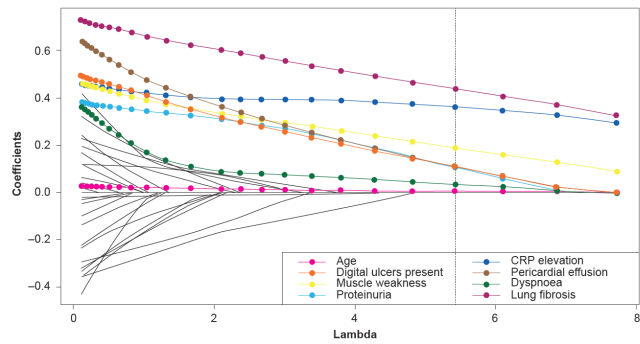
To evaluate the impact of the predictors retained in the final model on survival, we additionally calculated long-term event-free survival curves for patients with SSc with and without risk factors. Specifically, we tested the most clinically feasible combinations of increased CRP and presence of lung fibrosis or DU. These combinations showed a significantly worse event-free survival with the risk factors present ([figure 2](#)). With the presence of lung fibrosis and elevated CRP, the median time to an outcome event was 1.53 years versus 4.48 years for patients without any risk factors, that is, active DU, CRP elevation, significant dyspnoea, lung fibrosis, muscle weakness, pericardial effusion or proteinuria ([figure 2A](#);  $p<0.001$  by log-rank test). Active DU and elevated CRP shortened the median time to an outcome event from 4.48 years to 1.82 years ([figure 2B](#);  $p<0.001$  by

**Table 2** Frequency of disease worsening

Disease worsening	Yes	No	Missing
Any*	228 (32.3)	478 (67.7)	—
Worsening FVC	103 (14.6)	514 (72.8)	89 (12.6)
Death within 12 (±3) months	92 (13.0)	614 (87)	—
New echocardiography-suspected PH	37 (5.2)	582 (82.4)	87 (12.3)
New renal crisis	7 (1.0)	613 (86.8)	86 (12.2)
Worsening LVEF	5 (0.7)	614 (87.0)	87 (12.3)

Data are n (%).

\*Patients were considered to have disease worsening if death occurred within 12±3 months after baseline or if worsening was present for any of the other components. FVC, forced vital capacity; LVEF, left ventricular ejection fraction; PH, pulmonary hypertension.



**Figure 1** Average regression coefficients across 100 imputations plotted against the penalisation parameter, lambda. The vertical dashed line represents the selected model chosen as it had the smallest Bayesian information criterion. Traces in colour are those of the regression coefficients (and hence predictor variables) that remained in the final model. Traces for excluded regression coefficients are plotted in black and are not specified in the legend. CRP, C-reactive protein.

log-rank test). The additional analysis of four risk factors on their own showed that each (active DU, raised CRP, presence of lung fibrosis and muscle weakness) was associated with a significantly increased incidence of outcome events during follow-up as well as in combination (each  $p < 0.001$  by log-rank test; see online supplementary figure S5).

**Model validation**

A bootstrap with 10 000 repetitions was used to validate the final model chosen by the BIC. The C-index, which is identical to the area under the receiver operating characteristic, is a good measure to estimate discrimination. This in turn refers to the ability of the model to separate patients with and without the outcome event. The final model had a C-index of 0.711, which was 0.705 at validation, indicating good calibration (ie, agreement between actual and predicted probabilities) (see online supplementary figure S1).

**DISCUSSION**

By using a novel statistical approach to analyse data from a clinical registry, we successfully identified predictors of severe disease worsening—defined as organ failure within a period of  $12 \pm 3$  months—in patients with dcSSc. Based on our logistic regression model, we showed that the probability of a 60-year-old patient with lung fibrosis, DU, muscle weakness and CRP elevation developing disease worsening within the observation period increases to 74.5% compared with 32.2% for the

**Table 4** Probability (%) of disease worsening for combinations of predictors in study population (n=706)

Other risk factors*	Age			Patient numbers†
	60 years	65 years	70 years	
Lung fibrosis	37.5	40.4	43.3	131/666
Lung fibrosis and CRP elevation	52.0	55.0	57.9	47/650
Active DU	30.9	33.5	36.1	126/697
Lung fibrosis and active DU	49.7	52.6	55.6	31/662
Muscle weakness	30.9	33.5	36.2	164/701
Lung fibrosis, muscle weakness and active DU	61.8	64.6	67.3	16/660
Lung fibrosis, muscle weakness, CRP elevation and active DU	74.5	76.7	78.8	8/646

\*Predictors not specified in each row are set to zero.

†Patient numbers irrespective of age that fulfil the criteria within the whole study population.

CRP, C-reactive protein; DU, digital ulcer.

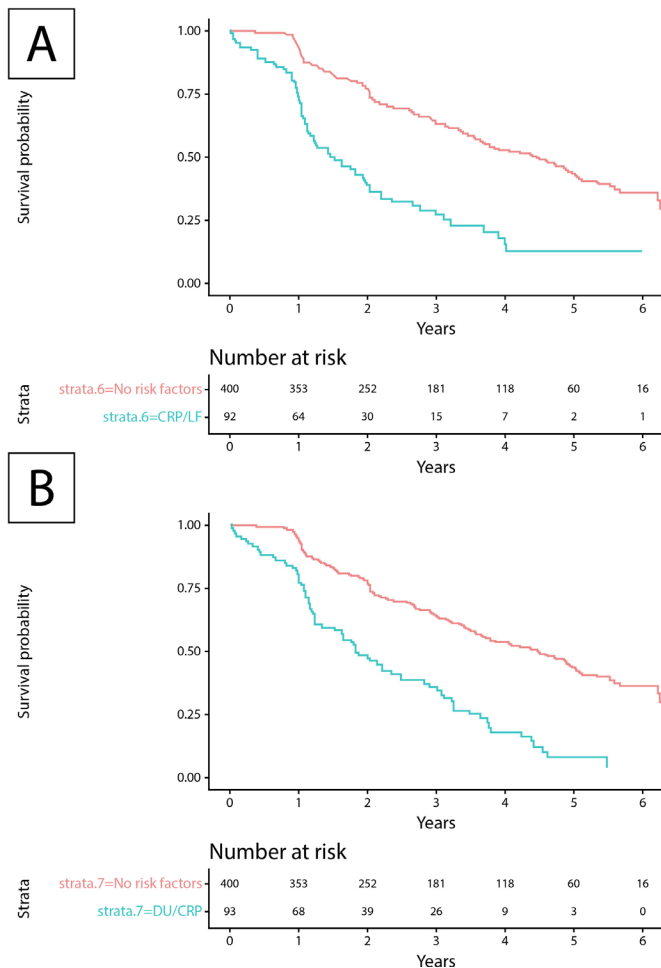
whole study population. The predictive factors of age, presence of DU, lung fibrosis, CRP elevation and muscle weakness represent important aspects of the disease and also correspond to the key characteristic features of vasculopathy (DU), autoimmunity/inflammation (CRP elevation) and tissue fibrosis (lung fibrosis). In addition to being predictive in our model for progression of disease after  $12 \pm 3$  months, the presence of DU, lung fibrosis, CRP elevation and muscle weakness could also predict, alone or in combination, disease progression over a longer period of time (up to 6 years after the baseline visit). This confirms the role of CRP elevation as an indicator of active disease and its potential relevance as an inclusion criterion in trials.<sup>18–21</sup> The data also support the notion that the presence of muscle weakness may include patients with overt myositis/myopathy, as well as patients with gastrointestinal problems being more likely to have malnutrition and consecutive muscle weakness.

DUs were identified in a previous EUSTAR study as a risk factor for cardiovascular worsening and mortality.<sup>22</sup> Lung involvement in SSc is well known,<sup>3</sup> and this is reflected in the high incidence of worsening FVC (14.6%) in the present study, while development of PH was the third most frequent event (5.2%) leading to disease worsening. The relatively high frequency of the FVC endpoint corresponds to the high OR for lung fibrosis in the final model. The discriminative value of a 10% decline in FVC has recently been confirmed by another report showing that this magnitude of decline is associated with increased mortality.<sup>23</sup> The percentage of patients with a significant FVC decline is similar to the patients with SSc receiving placebo from the Scleroderma Lung Study I/II analysis (approximately 15%).<sup>24</sup> The percentage of patients developing new echocardiography-suspected PH in our analysis was slightly higher than in the at-risk population included in the Pulmonary Hypertension Assessment and Recognition of Outcomes in Scleroderma registry (7% at 2 years)<sup>25</sup> and much higher than in unselected patients, where the annual incidence is approximately 1.4%–1.5%.<sup>26,27</sup> This is most likely due to a combination of patient selection in our cohort and use of an echocardiography-suspected PH definition that was not strictly based on right heart catheterisation data but based on assessment by the treating physician. The mortality rate within  $12 \pm 3$  months among patients with dcSSc in the present study (13%) was relatively high compared with earlier reports from the EUSTAR database (5-year mortality from diagnosis in all patients with SSc of 11%)<sup>28</sup> but also surpasses the 13% early mortality (within 3 years) recently reported in a multinational

Table 3 Final regression model for disease worsening			
	p Value	OR	95% CI
<b>Age (years)</b>	<b>0.001</b>	<b>1.02</b>	<b>1.01 to 1.04</b>
<b>Lung fibrosis</b>	<b>0.0004</b>	<b>2.21</b>	<b>1.43 to 3.41</b>
<b>CRP elevation</b>	<b>0.002</b>	<b>1.80</b>	<b>1.23 to 2.63</b>
<b>Muscle weakness</b>	<b>0.015</b>	<b>1.64</b>	<b>1.10 to 2.45</b>
<b>Active DU</b>	<b>0.026</b>	<b>1.64</b>	<b>1.06 to 2.54</b>
Proteinuria	0.064	1.75	0.97 to 3.16
Pericardial effusion	0.098	1.65	0.91 to 2.97
Significant dyspnoea	0.491	1.20	0.72 to 2.00

Parameters in **bold** had strong evidence for a significant association with disease progression in the final model.  
CRP, C-reactive protein; DU, digital ulcer.





**Figure 2** Event-free survival in patients with SSc depending on risk factors for progression of organ damage. (A) Event-free survival of patients with SSc fulfilling the inclusion criteria (diffuse SSc, death or at least one follow-up visit earliest at  $12 \pm 3$  months after baseline visit in 2009 or later) with risk factors (elevated CRP and presence of lung fibrosis) versus no risk factors (active DU, CRP elevation, significant dyspnoea, lung fibrosis, muscle weakness, pericardial effusion and proteinuria). The median survival time for patients with and without risk factors was 1.53 years (95% CI 1.13 to 1.99) and 4.48 years (95% CI 3.70 to 4.97), respectively. The log-rank test was significant ( $p < 0.001$ ). (B) Event-free survival of patients with SSc fulfilling the inclusion criteria with risk factors (elevated CRP and active DU) versus no risk factors. The median survival time for patients with and without risk factors was 1.82 years (95% CI 1.23 to 2.47) and 4.48 years (95% CI 3.70 to 4.97) years, respectively. The log-rank test was significant ( $p < 0.001$ ). CRP, C-reactive protein; DU, digital ulcer; LF, lung fibrosis; SSc, systemic sclerosis.

inception cohort.<sup>29</sup> However, the cohort used in the present analysis was selected to include dcSSc only, and thus was prone to have more complications than a general SSc cohort. In addition, deaths in the present study were all-cause deaths and not limited to SSc-related causes, with 63.3% of deaths documented as SSc related. However, currently, there is no clear definition of SSc-related mortality.

Our study was designed to address two important limitations that are often encountered when searching for predictive factors in large datasets from patient registries. First, there is often a high incidence of missing data, and second there are limits to the number of potential predictive variables that can be included in the statistical model. Observations with missing data on any

predictor variable will be eliminated in the process of ordinary logistic regression, so that only a 'full dataset' with valid data on all candidate predictor variables can be used in the final analysis. As patient registries such as EUSTAR depend on data input from many clinical centres, they typically have a certain amount of missing data. In addition, a low incidence of outcome events limits the number of predictive variables that can be used for the analysis, as the ratio of outcome events to predictor variables in the model should ideally be 1:10 or lower.<sup>30</sup> The issue of missing data was addressed in our analysis by imputing missing data on the basis of MI. The issue of limited predictive variables was addressed by using LASSO, a different type of regression analysis that allows selection and reduction of predictor variables ('shrinkage').<sup>31</sup>

It is possible that collection of some variables in the EUSTAR database began only recently or changed their definition during the data collection period. For example, PH is now mainly recorded as PAH. While PAH is currently defined in EUSTAR by mean pulmonary arterial and wedge pressures measured during right heart catheterisation, when the registry was initiated, PH was estimated by echocardiography. Hence, echocardiography-suspected PH in our study possibly overestimates true PAH. It seems likely that, as genuine PAH is strongly associated with mortality in SSc, the 92 deaths (13%) include some deaths resulting from PAH. Despite these limitations, our novel approach to the data in the EUSTAR registry successfully identified clinical features that allow enrichment of patients with dcSSc with disease worsening defined by organ failure.

Enriching a recruitment for clinical trials for progression of organ damage is not the same as for disease worsening as defined by progression of skin fibrosis. Therefore, the predictive factors that allow selection of patients with a higher probability for future increase in mRSS—baseline mRSS, joint synovitis, age, gender, disease duration and CK elevation<sup>32</sup>—are different. mRSS is a validated marker of overall disease severity and progression; baseline mRSS predicts both worsening and improvement of skin fibrosis,<sup>33</sup> progression of skin fibrosis within 1 year is associated with a decline in lung function and decreased survival, and skin progression rate and trajectories are linked to increased mortality and the risk of renal crisis.<sup>12 13 34</sup> However, skin fibrosis remains a surrogate marker and is not a direct measure of overall disease morbidity and mortality. In addition, it did not perform well as a primary outcome measure in recent randomised controlled trials for SSc<sup>35–37</sup> (while other secondary and exploratory endpoints such as FVC and patient-reported outcomes have shown promising trends), indicating that the mRSS has inefficient sensitivity to change according to morbidity.<sup>18</sup>

Clinical trial design in SSc is undergoing major changes in the selection of endpoints; it is likely that these will change from use of mRSS as the most common primary endpoint to other items or indices considering progression of organ involvement, overall disease progression and death. In addition to the endpoints used in this study, these could also encompass the mRSS or other outcomes including gastrointestinal involvement (weight loss), digital ischaemia, myopathy, disability and other features that have an impact on patients' lives. So far, little information has been available about which patient cohorts could be used for these analyses to allow for enough events and to make these novel study designs possible. This study provides evidence-based information from the largest SSc database available worldwide regarding which patients are appropriate for inclusion in these clinical trials. Although self-reported muscle weakness is difficult to use in clinical trials, an increased CRP and the presence of lung fibrosis and DUs are feasible inclusion criteria for further

clinical trials. However, the selection of enrichment criteria for a clinical study must be balanced against feasibility of recruitment and representation of a broader SSc population. Hence, this study provides key data to inform a novel study design that could likely be applied in the near future.

#### Author affiliations

- <sup>1</sup>Department of Rheumatology and the Centre of Experimental Rheumatology, University Hospital Zurich, Zurich, Switzerland  
<sup>2</sup>Graf Biostatistics, Winterthur, Switzerland  
<sup>3</sup>Big Data Institute, Li Ka Shing Centre for Health Information and Discovery, Nuffield Department of Medicine, University of Oxford, Oxford, UK  
<sup>4</sup>Rheumatology A Department, Paris Descartes University, Sorbonne Paris Cité, Cochin Hospital, Paris, France  
<sup>5</sup>Data Science and Analytics, Bayer plc, Reading, UK  
<sup>6</sup>UCL Division of Medicine, Royal Free Campus, London, UK  
<sup>7</sup>Division of Rheumatology, Department of Internal Medicine, University of Michigan Scleroderma Program, University of Michigan, Ann Arbor, Michigan, USA  
<sup>8</sup>Department of Experimental and Clinical Medicine, University of Florence, Florence, Italy  
<sup>9</sup>Bayer US LLC, Whippany, New Jersey, USA  
<sup>10</sup>Department of Medicine, Division of Rheumatology, University of Western Ontario, St. Joseph's Health Care, London, Ontario, Canada

**Acknowledgements** The R-code for the linear MI-LASSO was received from Qixuan Chen.<sup>21</sup> Medical writing assistance was provided by Adelphi Communications Ltd (Bollington, UK), funded by Bayer AG (Berlin, Germany).

**Collaborators** EUSTAR Collaborators (numerical order of centres): Marco Matucci-Cerinic, Serena Guiducci, University of Florence, Italy; Ulrich Walker, Veronika Jaeger, Bettina Bannert, University Hospital Basel, Switzerland; Giovanni Lapidula, School of Medicine University of Bari, Italy; Radim Becvarare, 1st Medical School, Charles University, Prague, Czech Republic; Maurizio Cutolo, University of Genova, Italy; Gabriele Valentini, Policlinico U.O. Reumatologia, Naples, Italy; Elise Siegert, Charité University Hospital, Berlin, Germany; Simona Rednic, University of Medicine & Pharmacy, "Iuliu Hatieganu" Cluj, Cluj-Napoca, Romania; Yannick Allanore, University Cochin Hospital, Paris, France; C. Montecucco, IRCCS Policlinico S Matteo, Pavia, Italy; Patricia E. Carreira, Hospital 12 de Octubre, Madrid, Spain; Srdan Novak, KBC Rijeka, Croatia; László Czirják, Cecilia Varju, University of Pécs, Hungary; Carlo Chizzolini, Daniela Allai, University Hospital Geneva, Switzerland; Eugene J. Kucharz, Medical University of Silesia, Katowice, Poland; Franco Cozzi, University of Padova, Italy; Blaz Rozman, University Medical Center Ljubljana, Slovenia; Carmel Mallia, "Stella Maris", Balzan, Malta; Armando Gabrielli, Istituto di Clinica Medica Generale, Ematologia ed Immunologia Clinica, Università Politecnica delle Marche Polo Didattico, University of Ancona, Italy; Dominique Farge Bancel, Hôpital Saint-Louis, Paris, France; Paolo Airò, Spedali Civili di Brescia Servizio di Reumatologia Allergologia e Immunologia Clinica, Brescia, Italy; Roger Hesselstrand, Lund University Hospital, Sweden; Duska Martinovic, Clinical Hospital of Split, Croatia; Alexandra Balbir-Gurman, Yolanda Braun-Moscovici, B. Shine Rheumatology Institute, Rambam Health Care Campus, Haifa, Israel; Nicolas Hunzelmann, Universitätsklinik Köln, Germany; Raffaele Pellerito, Ospedale Mauriziano, Torino, Italy; Paola Caramaschi, Università degli Studi di Verona, Italy; Carol Black, Royal Free and University College London Medical School, London, UK; Nemanja Damjanov, Institute of Rheumatology Belgrade, Serbia and Montenegro; Jörg Henes, Medizinische Universitätsklinik Abt. II, Tübingen, Germany; Vera Ortiz Santamaria, Rheumatology Granollers General Hospital, Barcelona, Spain; Stefan Heitmann, Marienhospital Stuttgart, Germany; Matthias Seidel, Medizinische Universitäts-Poliklinik, Bonn, Germany; José Antonio Pereira Da Silva, da Universidade, Coimbra, Portugal; Bojana Stamenkovic, Institute for Prevention, Treatment and Rehabilitation Rheumatic and Cardiovascular Disease Niska Banja, Serbia and Montenegro; Carlo Francesco Selmi, University of Milan, Italy; Mohammed Tikly, Chris Hanj Baragwanath Hospital and University of the Witwatersrand, Johannesburg, South Africa; Lev N. Denisov, VA Nasonova Institute of Rheumatology, Moscow, Russia; Ulf Müller-Ladner, Kerckhoff Clinic Bad Nauheim, Germany; Merete Engelhart, University Hospital of Gentofte, Hellerup, Denmark; Eric Hachulla, Hôpital Claude Huriez, Lille, France; Valeria Riccieri, "Sapienza" Università di Roma, Italy; Ruxandra Maria Ionescu, St. Maria Hospital, Carol Davila University of Medicine and Pharmacy, Bucharest, Romania; Carina Mihai, Ion Cantacuzino Clinical Hospital, Bucharest, Romania; Cord Sunderkötter, Annegret Kuhn, University of Münster, Germany; Georg Schett, Jörg Distler, Universitätsklinikum Erlangen, Germany; Pierluigi Meroni, Francesca Ingegnoli, Istituto Gaetano Pini, University of Milano, Italy; Luc Mouthon, Hôpital Cochin, Paris, France; Filip De Keyser, Vanessa Smith, University of Ghent, Belgium; Francesco Paolo Cantatore, Ada Corrado, U.O. Reumatologia-Università degli Studi di Foggia, Ospedale "Col. D'Avanzo", Foggia, Italy; Susanne Ullman, Line Iversen, University Hospital of Copenhagen, Denmark; Maria Rosa Pozzi, Ospedale San Gerardo, Monza, Italy; Kilian Eyerich, Rüdiger Hein, Elisabeth Knott, TU Munich, Germany; Piotr Wiland, Magdalena Szymrka-Kaczmarek, Renata Sokolik, Ewa

Morgiel, Marta Madej, Wroclaw University of Medicine, Poland; Juan Jose Alegre-Sancho, Hospital Universitario Dr Peset, Valencia, Spain; Brigitte Krummel-Lorenz, Petra Saar, Endokrinologikum Frankfurt, Germany; Martin Aringer, Claudia Günther, Eriker Anne, University Medical Center, Carl Gustav Carus, Technical University of Dresden, Germany; Rene Westhovens, Ellen De Langhe, Jan Lenaerts, University Hospital Leuven, Skeletal Biology and Engineering Research Center, Leuven, Belgium; Branimir Anic, Marko Baresic, Miroslav Mayer, University of Zagreb, School of Medicine, University Hospital Center Zagreb, Croatia; Maria Üprus, Kati Otsa, East-Tallin Central Hospital, Tallin, Estonia; Sule Yavuz, University of Marmara, Altunizade-Istanbul, Turkey; Sebastião Cezar Radominski, Carolina de Souza Müller, Valderilio Feijó Azevedo, Hospital de Clinicas da Universidade Federal do Paraná, Curitiba, Brazil; Sergei Popa, Republican Clinical Hospital, Chisinau, Republic of Moldova; Thierry Zenone, Unit of Internal Medicine, Valence, France; Simon Stebbings, John Highton, Dunedin School of Medicine, New Zealand; Alessandro Mathieu, Alessandra Vacca, II Chair of Rheumatology, University of Cagliari-Policlinico Universitario, Cagliari, Italy; Lisa Stamp, Peter Chapman, John O'Donnell, University of Otago, Christchurch, New Zealand; Kamal Solanki, Alan Doube, Waikato University Hospital, Hamilton, New Zealand; Douglas Veale, Marie O'Rourke, St. Vincent's University Hospital, Dublin, Ireland; Esthela Loyo, Hospital Regional Universitario Jose Ma Cabral y Baez, Clinica Corominas, Santiago, Dominican Republic; Mengtao Li, Peking Union Medical College Hospital (West Campus), Beijing, China; Edoardo Rosato, Antonio Amoroso, Antonietta Gigante, Sapienza Università di Roma, Università La Sapienza, Policlinico Umberto I, Roma, Italy; Fahrettin Oksef, Figen Yargucu, Ege University, Bornova, Izmir, Turkey; Cristina-Mihaela Tanaseanu, Monica Popescu, Alina Dumitrascu, Isabela Tiglea, Clinical Emergency Hospital St. Pantelimon, Bucharest, Romania; Rosario Foti, Elisa Visalli, Alessia Benenati, Giorgio Amato, A.O.U. Policlinico Vittorio Emanuele La U.O. Di Reumatologia, A.O.U. Policlinico V.E. Catania Centro di Riferimento Regionale Maltattie Rare Reumatologiche, Catania, Italy; Codrina Ancuta, Rodica Chiriac, GR.T. Popa Center for Biomedical Research, European Center for Translational Research, University of Medicine and Pharmacy, Rehabilitation Hospital, Iasi, Romania; Peter Villiger, Sabine Adler, Diana Dan, University of Bern, Switzerland; Paloma Garcia de la Peña Lefebvre, Silvia Rodriguez Rubio, Marta Valero Exposito, Hospital Universitario Sanchinarro, Madrid, Spain; Jean Sibilia, Emmanuel Chatelet, Jacques Eric Gottenberg, Hélène Chiffrot, University Hospital of Strasbourg, Hôpital de Haute-pierre, Strasbourg, France; Ira Litinsky, Tel Aviv Sourasky Medical Center, Israel; Francesco Del Galdo, University of Leeds, Chapel Allerton Hospital, Leeds, UK; Algirdas Venalis, State Research Institute for Innovative Medicine, Vilnius University, Lithuania; Lesley Ann Saketkoo, Joseph A. Lasky, Tulane/University Medical Center Scleroderma and Sarcoidosis Patient Care and Research Center, New Orleans, Louisiana, USA; Eduardo Kerzberg, Fabiana Montoya, Vanesa Cosentino, Osteoarticular Diseases and Osteoporosis Centre, Pharmacology and Clinical Pharmacological Research Centre, School of Medicine, University of Buenos Aires, Ramos Mejía Hospital, Buenos Aires, Argentina; Massimiliano Limonta, Antonio Luca Brucato, Elide Lupi, USSD Reumatologia, Ospedali Riuniti di Bergamo, Italy; François Spertini, Camillo Ribi, Guillaume Buss, Department of Rheumatology, Clinical Immunology and Allergy, Lausanne, Switzerland; Thierry Martin, Aurélien Guffroy, Vincent Poindron, Nouvel Hôpital Civil, Strasbourg, France; Lori Chung, Stanford University School of Medicine, California, USA; Tim Schmeiser, Krankenhaus St. Josef, Wuppertal-Elberfeld, Germany; Pawel Zebryk, Poznan University of Medical Sciences, Poland; Nuno Riso, Unidade de Doencas Autoimunes - Hospital Curry Cabral, Centro Hospitalar Lisboa Central, Lisbon, Portugal; Gabriela Riemekasten, Universitätsklinik Lübeck, Germany; Elena Rezus, University of Medicine and Pharmacy "GR.T.Popa" Iasi, Rehabilitation Hospital, Iasi, Romania; Piercarlo Sarzi Puttini, University Hospital Luigi Sacco, Milan, Italy.

**Contributors** Study conception and design, acquisition of data, analysis and interpretation of data and drafting and revising the article: OD and MB; analysis and interpretation of data: OD, MB, RS and NG. All authors have critically reviewed and approved the final submitted version to be published.

**Funding** This study was supported by a grant from Bayer AG. Bayer employees are coauthors of this paper and supported the study design and interpretation of the data, but otherwise Bayer had no influence on the study.

**Competing interests** MOB declares no conflict of interest. OD has had consultancy relationships with Actelion, Bayer, Biogen Idec, Boehringer Ingelheim, ChemomAb, espeRare foundation, Genentech/Roche, GSK, Inventiva, Italfarmaco, Lilly, medac, MedImmune, Mitsubishi Tanabe Pharma, Pharamcyclics, Novartis, Pfizer, Sanofi, Sinoxa and UCB in the area of potential treatments of scleroderma and its complications. OD has received research funding from Actelion, Bayer, Boehringer Ingelheim, Mitsubishi Tanabe Pharma and Roche in the area of potential treatments of scleroderma and its complications. OD has a patent for mir-29 licensed for the treatment of systemic sclerosis. DK has consultancy relationships and/or has received grant/research support from Bayer, Bristol-Myers Squibb, Boehringer Ingelheim, Genentech/Roche, NIH, Pfizer, Sanofi-Aventis Pharmaceuticals, Actelion Pharmaceuticals US, ChemomAb, Corbus, Covis, Cytari, Eicos, EMD Serono, Gilead, GlaxoSmithKline, and UCB Pharma. He is a shareholder of Eicos. CPD has consultancy relationships with and/or has received speakers' bureau fees from

Actelion Pharmaceuticals US, Bayer AG, GlaxoSmithKline, CSL Behring, Merck Serono, Roche Pharmaceuticals, Genentech and Biogen IDEC Inc., Inventiva, Sanofi-Aventis Pharmaceuticals and Boehringer Ingelheim. JEP has consultancy relationships with and/or has received grant/research support from Actelion, Bayer AG, Bristol-Myers Squibb, Merck, Pfizer Inc. and Roche. MM-C has consultancy relationships and/or has received grant/research support from Pfizer, Bristol-Myers Squibb, Actelion, UCB Pharma, Bayer, ChemomAb, Genentech/Roche, Inventiva and Lilly. YA has consultancy relationships with and/or has received grant/research support from Actelion, Pharmaceuticals US, Bayer AG, Bristol-Myers Squibb, Inventiva, Medac, Pfizer Inc., Roche Pharmaceuticals, Genentech and Biogen IDEC Inc., Sanofi-Aventis Pharmaceuticals and Servier. JdOP and JC are employees of Bayer. NTG has nothing to disclose.

**Patient consent for publication** Not required.

**Ethics approval** All contributing EUSTAR centres have obtained approval from their respective local ethics committee for including patients' data in the EUSTAR database and written informed consent was obtained in those centres, where required by the ethics committee.

**Provenance and peer review** Not commissioned; externally peer reviewed.

**Data availability statement** Data are available upon reasonable request. All data relevant to the study are included in the article or uploaded as supplementary information.

**Open access** This is an open access article distributed in accordance with the Creative Commons Attribution 4.0 Unported (CC BY 4.0) license, which permits others to copy, redistribute, remix, transform and build upon this work for any purpose, provided the original work is properly cited, a link to the licence is given, and indication of whether changes were made. See: <https://creativecommons.org/licenses/by/4.0/>.

## REFERENCES

- Elhai M, Meune C, Avouac J, *et al.* Trends in mortality in patients with systemic sclerosis over 40 years: a systematic review and meta-analysis of cohort studies. *Rheumatology* 2012;51:1017–26.
- Toledano E, Candelas G, Rosales Z, *et al.* A meta-analysis of mortality in rheumatic diseases. *Reumatol Clin* 2012;8:334–41.
- Elhai M, Meune C, Boubaya M, *et al.* Mapping and predicting mortality from systemic sclerosis. *Ann Rheum Dis* 2017;76:1897–905.
- Clements PJ, Lachenbruch PA, Ng SC, *et al.* Skin score: a semiquantitative measure of cutaneous involvement that improves prediction of prognosis in systemic sclerosis. *Arthritis Rheum* 1990;33:1256–63.
- Khanna D, Furst DE, Clements PJ, *et al.* Standardization of the modified Rodnan skin score for use in clinical trials of systemic sclerosis. *J Scleroderma Relat Disord* 2017;2:11–18.
- Clements PJ, Lachenbruch P, Siebold J, *et al.* Inter and intraobserver variability of total skin thickness score (modified Rodnan TSS) in systemic sclerosis. *J Rheumatol* 1995;22:1281–5.
- Furst DE, Clements PJ, Steen VD, *et al.* The modified Rodnan skin score is an accurate reflection of skin biopsy thickness in systemic sclerosis. *J Rheumatol* 1998;25:84–8.
- Clements PJ, Hurwitz EL, Wong WK, *et al.* Skin thickness score as a predictor and correlate of outcome in systemic sclerosis: high-dose versus low-dose penicillamine trial. *Arthritis Rheum* 2000;43:2445–54.
- Chung L, Denton CP, Distler O, *et al.* Clinical trial design in scleroderma: where are we and where do we go next? *Clin Exp Rheumatol* 2012;30(2 Suppl 71):S97–102.
- Johnson SR, Khanna D, Allanore Y, *et al.* Systemic sclerosis trial design moving forward. *J Scleroderma Relat Disord* 2016;1:177–80.
- Khanna D, Berrocal VJ, Giannini EH, *et al.* The American College of rheumatology provisional composite response index for clinical trials in early diffuse cutaneous systemic sclerosis. *Arthritis Rheumatol* 2016;68:299–311.
- Wu W, Jordan S, Graf N. Progressive skin fibrosis is associated with a decline in lung function and poorer survival in patients with diffuse cutaneous systemic sclerosis: a European scleroderma trials and research (EUSTAR) analysis. Annual European Congress of Rheumatology (EULAR), Amsterdam, The Netherlands, 2018 13–16 June.
- Shand L, Lunt M, Nihtyanova S, *et al.* Relationship between change in skin score and disease outcome in diffuse cutaneous systemic sclerosis: application of a latent linear trajectory model. *Arthritis Rheum* 2007;56:2422–31.
- Meier FMP, Frommer KW, Dinsler R, *et al.* Update on the profile of the EUSTAR cohort: an analysis of the EULAR scleroderma trials and research Group database. *Ann Rheum Dis* 2012;71:1355–60.
- Walker UA, Tyndall A, Czirják L, *et al.* Clinical risk assessment of organ manifestations in systemic sclerosis: a report from the EULAR scleroderma trials and research Group database. *Ann Rheum Dis* 2007;66:754–63.
- LeRoy EC, Black C, Fleischmajer R, *et al.* Scleroderma (systemic sclerosis): classification, subsets and pathogenesis. *J Rheumatol* 1988;15:202–5.
- Graham JW, Olchowski AE, Gilreath TD. How many imputations are really needed? some practical clarifications of multiple imputation theory. *Prev Sci* 2007;8:206–13.
- Khanna D, Denton CP, Jhreis A, *et al.* Safety and efficacy of subcutaneous tocilizumab in adults with systemic sclerosis (faSScinate): a phase 2, randomised, controlled trial. *Lancet* 2016;387:2630–40.
- Ross L, Stevens W, Rabusa C, *et al.* The role of inflammatory markers in assessment of disease activity in systemic sclerosis. *Clin Exp Rheumatol* 2018;113:126–34.
- Chen Q, Wang S. Variable selection for multiply-imputed data with application to dioxin exposure study. *Stat Med* 2013;32:3646–59.
- Spiera RF, Hummers L LC, Frech T, *et al.* A phase 2 study of safety and efficacy of Anabasum (JBT-101), a cannabinoid receptor type 2 agonist, in diffuse cutaneous systemic sclerosis. *Arthritis Rheumatol* 2017;69.
- Mihai C, Landewé R, van der Heijde D, *et al.* Digital ulcers predict a worse disease course in patients with systemic sclerosis. *Ann Rheum Dis* 2016;75:681–6.
- Goh NS, Hoyle RK, Denton CP, *et al.* Short-term pulmonary function trends are predictive of mortality in interstitial lung disease associated with systemic sclerosis. *Arthritis Rheumatol* 2017;69:1670–8.
- Volkman ER, Tashkin DP, Li N, *et al.* Mycophenolate mofetil versus placebo for systemic sclerosis-related interstitial lung disease: an analysis of scleroderma lung studies I and II. *Arthritis Rheumatol* 2017;69:1451–60.
- Hsu VM, Chung L, Hummers LK, *et al.* Development of pulmonary hypertension in a high-risk population with systemic sclerosis in the pulmonary hypertension assessment and recognition of outcomes in scleroderma (PHAROS) cohort study. *Semin Arthritis Rheum* 2014;44:55–62.
- Morrisroe K, Stevens W, Sahhar J, *et al.* Epidemiology and disease characteristics of systemic sclerosis-related pulmonary arterial hypertension: results from a real-life screening programme. *Arthritis Res Ther* 2017;19.
- Vandecasteele E, Drieghe B, Melsens K, *et al.* Screening for pulmonary arterial hypertension in an unselected prospective systemic sclerosis cohort. *Eur Respir J* 2017;49.
- Fransen J, Popa-Diaconu D, Hesselstrand R, *et al.* Clinical prediction of 5-year survival in systemic sclerosis: validation of a simple prognostic model in EUSTAR centres. *Ann Rheum Dis* 2011;70:1788–92.
- Hao Y, Hudson M, Baron M, *et al.* Early mortality in a multinational systemic sclerosis inception cohort. *Arthritis Rheumatol* 2017;69:1067–77.
- Peduzzi P, Concato J, Kemper E, *et al.* A simulation study of the number of events per variable in logistic regression analysis. *J Clin Epidemiol* 1996;49:1373–9.
- Yuan M, Lin Y. Model selection and estimation in regression with grouped variables. *J Royal Statistical Soc B* 2006;68:49–67.
- Maurer B, Graf N, Michel BA, *et al.* Prediction of worsening of skin fibrosis in patients with diffuse cutaneous systemic sclerosis using the EUSTAR database. *Ann Rheum Dis* 2015;74:1124–31.
- Dobrota R, Maurer B, Graf N, *et al.* Prediction of improvement in skin fibrosis in diffuse cutaneous systemic sclerosis: a EUSTAR analysis. *Ann Rheum Dis* 2016;75:1743–8.
- Domsic RT, Rodriguez-Reyna T, Lucas M, *et al.* Skin thickness progression rate: a predictor of mortality and early internal organ involvement in diffuse scleroderma. *Ann Rheum Dis* 2011;70:104–9.
- Distler O, Allanore Y, Denton CP, *et al.* Riociguat in patients with early diffuse cutaneous systemic sclerosis: a randomized, double-blind, placebo-controlled phase IIb study (RISE-SSc). *Arthritis Rheumatol* 2018;70(Suppl. 9):Abstract no. 903.
- Khanna D, CJF L, Kuwana M, *et al.* Efficacy and safety of tocilizumab for the treatment of systemic sclerosis: results from a phase 3 randomized controlled trial. *Arthritis Rheumatol* 2018;70(Suppl. 9):Abstract no. 898.
- Khanna D, Spino C, Bush E, *et al.* Abatacept vs. placebo in early diffuse cutaneous systemic sclerosis - results of a Phase 2 investigator initiated, double-blind, placebo-controlled, multicenter, randomized controlled trial study. *Arthritis Rheumatol* 2018;70(Suppl. 9):Abstract no. 900.
- Valentini G, D'Angelo S, Della Rossa A, *et al.* European scleroderma Study group to define disease activity criteria for systemic sclerosis. IV. Assessment of skin thickening by modified Rodnan skin score. *Ann Rheum Dis* 2003;62:904–5.