



Invited review

East African climate pulses and early human evolution



Mark A. Maslin^{a, *}, Chris M. Brierley^a, Alice M. Milner^a, Susanne Shultz^b,
Martin H. Trauth^c, Katy E. Wilson^d

^a Department of Geography, University College London, London, UK

^b Faculty of Life Sciences, The University of Manchester, Manchester, UK

^c Institut für Erd- und Umweltwissenschaften, Universität Potsdam, 14476 Potsdam, Germany

^d Department of Earth Sciences, University College London, London, UK

ARTICLE INFO

Article history:

Received 7 February 2014

Received in revised form

10 June 2014

Accepted 12 June 2014

Available online 12 July 2014

Keywords:

Human evolution

East Africa

Palaeoclimatology

Palaeolimnology

Tectonics

Hominin

Orbital forcing

Cenozoic climate transitions

Pulsed climate variability hypothesis

ABSTRACT

Current evidence suggests that all of the major events in hominin evolution have occurred in East Africa. Over the last two decades, there has been intensive work undertaken to understand African palaeoclimate and tectonics in order to put together a coherent picture of how the environment of East Africa has varied in the past. The landscape of East Africa has altered dramatically over the last 10 million years. It has changed from a relatively flat, homogenous region covered with mixed tropical forest, to a varied and heterogeneous environment, with mountains over 4 km high and vegetation ranging from desert to cloud forest. The progressive rifting of East Africa has also generated numerous lake basins, which are highly sensitive to changes in the local precipitation–evaporation regime. There is now evidence that the presence of precession-driven, ephemeral deep-water lakes in East Africa were concurrent with major events in hominin evolution. It seems the unusual geology and climate of East Africa created periods of highly variable local climate, which, it has been suggested could have driven hominin speciation, encephalisation and dispersal out of Africa. One example is the significant hominin speciation and brain expansion event at ~1.8 Ma that seems to have been coeval with the occurrence of highly variable, extensive, deep-water lakes. This complex, climatically very variable setting inspired first the *variability selection hypothesis*, which was then the basis for the *pulsed climate variability hypothesis*. The newer of the two suggests that the long-term drying trend in East Africa was punctuated by episodes of short, alternating periods of extreme humidity and aridity. Both hypotheses, together with other key theories of climate–evolution linkages, are discussed in this paper. Though useful the actual evolution mechanisms, which led to early hominins are still unclear and continue to be debated. However, it is clear that an understanding of East African lakes and their palaeoclimate history is required to understand the context within which humans evolved and eventually left East Africa.

© 2014 The Authors. Published by Elsevier Ltd. This is an open access article under the CC BY license (<http://creativecommons.org/licenses/by/3.0/>).

1. Introduction

Human evolution is characterised by speciation, extinction and dispersal events that have been linked to both global and/or regional palaeoclimate records (deMenocal, 1995; Trauth et al., 2005; Carto et al., 2009; Castañeda et al., 2009; Armitage et al., 2011; Donges et al., 2011; Shultz et al., 2012). However, none of these records fully explain the timing or the causes of these human evolution events (Maslin and Christensen, 2007; Trauth et al., 2009; Potts, 2013). This is primarily due to global and regional palaeoclimate records not being representative of the climate of the East

Africa (Shultz and Maslin, 2013). Understanding the climate of East Africa is essential because, despite the dispersal of hominins out of Africa after two million years ago (Agusti and Lordkipanidze, 2011) current evidence suggests the majority of hominin species originated in East Africa (Antón and Swisher, 2004; Wood, 2014).

Environmental pressures have long been assumed to play a key role in hominin speciation and adaptation (Maslin and Christensen, 2007) and a number of iconic theories have been developed to frame and develop the discussion of hominin evolution. Table 1 tries to put these key theories into the context of overarching evolutionary theory. Though the split between *phylogenetic gradualism* and *punctuated equilibrium* is artificial it does provide a starting point with which to discuss theories of early human evolution. In Table 1, gradualism has been split into constant and variable evolution rates to reflect the full range of current opinions;

* Corresponding author.

E-mail address: m.maslin@ucl.ac.uk (M.A. Maslin).

Table 1
Early human evolutionary theories placed in the context of overall evolutionary theory and modes of climatic change.

		CLIMATE STRESS			
		None	Long-term state change	Threshold event	Variability
EVOLUTIONARY FORM	Phyletic Gradualism	Red Queen (Van Valen 1973)	<i>Allopatric speciation</i>		
	variable	Red Queen (Van Valen 1973)	Turnover-pulse hypothesis (Vrba 1985) Savannah hypothesis	<i>Allopatric speciation</i>	Variability selection hypothesis (Potts 1998) Pulsed-climate variability hypothesis (Maslin & Trauth 2009)
	Punctuated Equilibrium	Court Jester (e.g. Impact event) (Barnosky 2001)	Aridity hypothesis (de Menocal 1995)	Court Jester (Barnosky 2001) <i>Allopatric speciation</i>	Pulsed-climate variability hypothesis (Maslin & Trauth 2009)

though attempts have been made to combine *phylogenetic gradualism* and *punctuated equilibrium*, such as *punctuated gradualism* (Malmgren et al., 1983), these have not been included as they are not widely accepted.

The first key environmental theory to explain bipedalism was the *savannah hypothesis*, which suggested that hominins were forced to descend from the trees and adapted to life on the savannah facilitated by walking erect on two feet (Lewin and Foley, 2004). This theory was refined as the *aridity hypothesis*, which suggested that the long-term trend towards increased aridity and the expansion of the savannah was a major driver of hominin evolution (deMenocal, 1995, 2004; Reed, 1997). A key addition to this theory was the suggestion that during periods when aridification accelerated, due to thresholds in the global climate system, then thresholds in evolution were reached and major hominin speciation events occurred (deMenocal, 1995).

The *turnover pulse hypothesis* (Vrba, 1988) was originally developed to explain discrete patterns in ungulate speciation, and suggests that acute climate shifts drove adaptation and speciation. Vrba (1988) recognised that environmentally-induced extinctions hurt specialist species more than generalist species. Hence when there is an environmental disruption, the generalists will tend to thrive by utilizing new environmental opportunities and by moving elsewhere to take advantage of other areas that have lost specialist species. The specialists will experience more extinctions, and therefore an increased speciation rate within their group. This would lead to more rapid evolution in isolated areas, i.e., allopatric speciation, whereas the generalists will become more spread out.

The *variability selection hypothesis* advocates the role of environmental unpredictability in selecting for behavioural or ecological flexibility (Potts, 1998, 2013; Grove, 2011a,b). This theory develops the original *turnover pulse hypothesis* but instead splits species into their varying ability to adapt and evolve to a more variable and unpredictable environment. The *variability selection hypothesis* emphasises the long-term trends toward a drier and more variable climate. It however struggles to explain the current palaeoanthropological evidence that suggests a pulsed/threshold nature of hominin speciation and migration events. A direct development of the *variability selection hypothesis* is the *pulsed climate variability hypothesis*, which highlights the role of short periods of extreme climate variability specific to East Africa in driving hominin evolution (Maslin and Trauth, 2009). It is the palaeoclimate evidence for this later framework, the *pulsed climate*

variability hypothesis, which is discussed in this review along with how the other evolutionary theories may be applied given the new context (see Fig. 1).

2. Formation and development of the East Africa rift system

On a regional scale, tectonics can cause significant changes in climate, hydrology and vegetation cover. In East Africa, long-term climatic change is controlled by tectonics, with the progressive formation of the East African Rift Valley leading to increased aridity and the development of fault graben basins as catchments for lakes (Fig. 2). Rifting begins with updoming at the site of future separation, and downwarping away from the site. This is followed by rifting and separation as half grabens (land that has subsided with a fault on one side) are formed on either side of the rift. While the early stages of rifting in East Africa were characterised by general updoming and downwarping, faulting during the later stages progressed from north to south.

Volcanism in East Africa may have started as early as 45–33 Ma in the Ethiopian Rift (Trauth et al. (2005, 2007) while initial uplift may have occurred between 38 and 35 Ma (Underwood et al., 2013). There is evidence for volcanism as early as 33 Ma in northern Kenya, but magmatic activity in the central and southern rift segments in Kenya and Tanzania did not start until between 15 and 8 Ma (e.g., Bagdasaryan et al., 1973; Crossley and Knight, 1981; McDougall and Watkins, 1988; George et al., 1998; Ebinger et al., 2000). The high relief of the East African Plateau developed between 18 Ma and 13 Ma (Wichura et al., 2010). Major faulting in Ethiopia occurred between 20 and 14 Ma and was followed by the development of east-dipping faults in northern Kenya between 12 and 7 Ma (Fig. 3). This was superseded by normal faulting on the western side of the Central and Southern Kenya Rifts between 9 and 6 Ma (Baker et al., 1988; Blisniuk and Strecker, 1990; Ebinger et al., 2000). Subsequent antithetic faulting of these early half grabens between about 5.5 and 3.7 Ma then generated a full-graben (a block of subsided land with faults on either side) morphology (Baker et al., 1988; Strecker et al., 1990). Prior to the full-graben stage, the large Aberdare volcanic complex (elevations in excess of 3500 m), an important Kenyan orographic barrier, was established along a section of the eastern rim of the EARS (Williams et al., 1983). By 2.6 Ma, the Central Kenyan Rift graben was further segmented by west-dipping faults, creating the 30-km-wide intrarift Kinangop Plateau and the tectonically active 40-km-wide inner rift (Baker

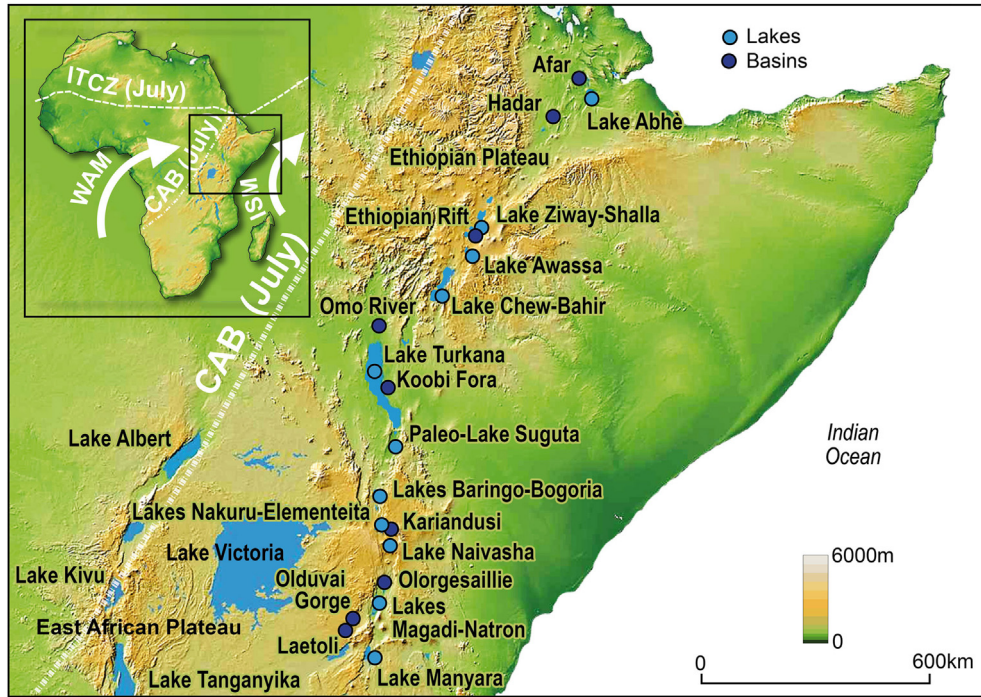


Fig. 1. Map of East Africa with main modern lake and palaeolake Basins (adapted from Junginger and Trauth, 2013).

et al., 1988; Strecker et al., 1990). After 2 Ma, many of the Kenyan lake basins continued to fragment due to ongoing volcanic activity. This includes the formation of the Barrier volcano separating Lake Turkana and the Suguta Valley (~1.4 Ma eastern side and ~0.7 Ma western side) and the Emurangogolak volcano (~1.3 Ma) that separate Lake Baringo and the Suguta Valley (Dunkley et al., 1993; McDougall et al., 2012). Therefore before 1.4 Ma, an inter-connected lake system may have existed stretching from the Omo National Park in the north to just north of Lake Baringo in the south (Fig. 2). In the Tanzanian sector of the rift, sedimentation in isolated basins began at ~5 Ma. A major phase of rift faulting occurred at 1.2 Ma resulting in the present-day rift escarpments (Foster et al., 1997).

Tectonic events such as these are associated with a variety of biotic changes. Over the Oligocene and Miocene progressive uplift of East Africa split the pan-Africa rainforest which joined the Congo

with East Africa resulting in endemic species in East Africa emerging at 33, 16 and 8 Ma (Couvreur et al., 2008). During the Plio-Pleistocene, there is evidence from soil carbonates (Levin et al., 2004; Wynn, 2004; Ségalen et al., 2007; Levin, 2013), marine sediment *n*-alkane carbon isotopes (Feakins et al., 2005, 2007; 2013) and fossilised mammal teeth (Harris et al., 2008; Brachert et al., 2010) that there was a progressive vegetation shift from C₃ plants to C₄ plants during the Pliocene and Pleistocene. This vegetation shift has been ascribed to increased aridity due to the progressive rifting and tectonic uplift of East Africa (deMenocal, 2004). The only data set that disagrees with this overall aridity trend is pollen data from DSDP Site 231 in the Gulf of Aden (Bonnefille, 2010; Feakins et al., 2013). These data suggest that the amount of grass pollen decreased over the last 12 Myrs but that there was little change between 2 and 4 Ma. However, this is a

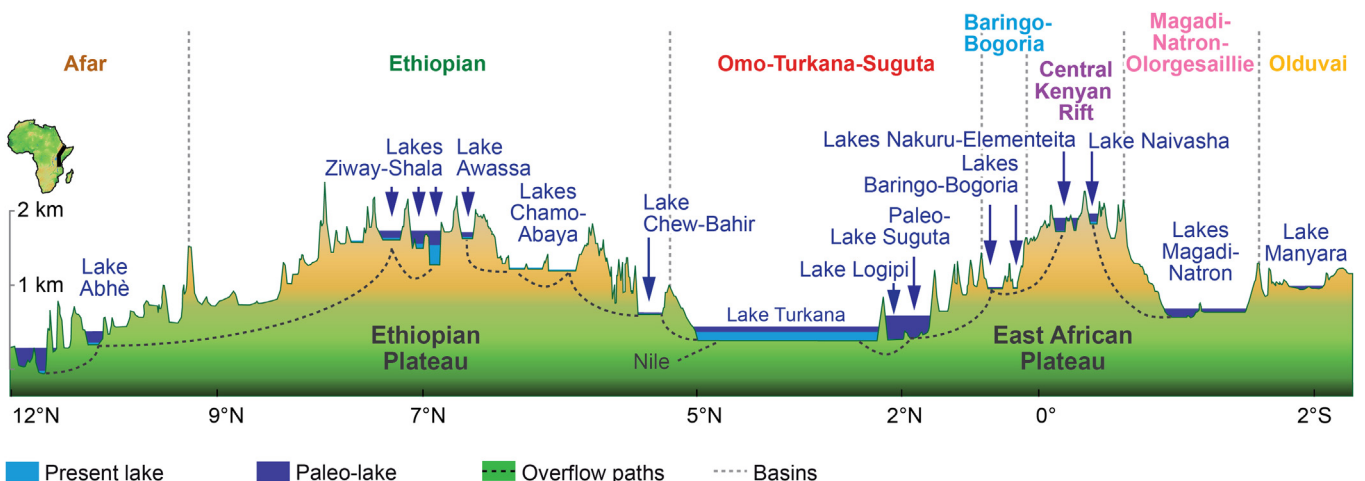


Fig. 2. Cross section of East Africa showing the main modern lake and palaeolake Basins (adapted from Junginger and Trauth, 2013).

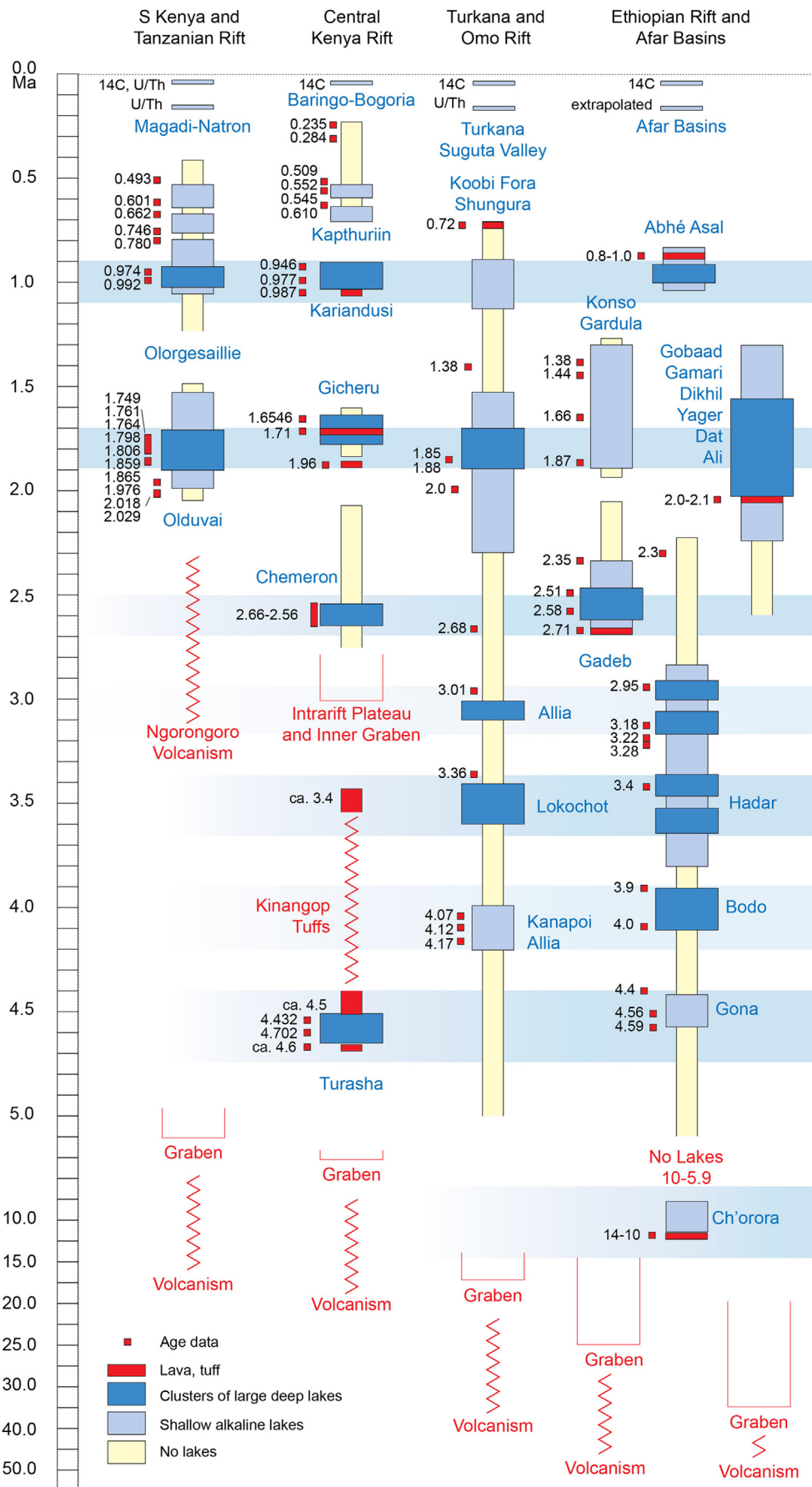


Fig. 3. Summary of the tectonic and lake occurrences in East Africa using data from Trauth et al. (2007); Maslin and Trauth (2009); Wichura et al. (2010, 2011); Underwood et al. (2013).

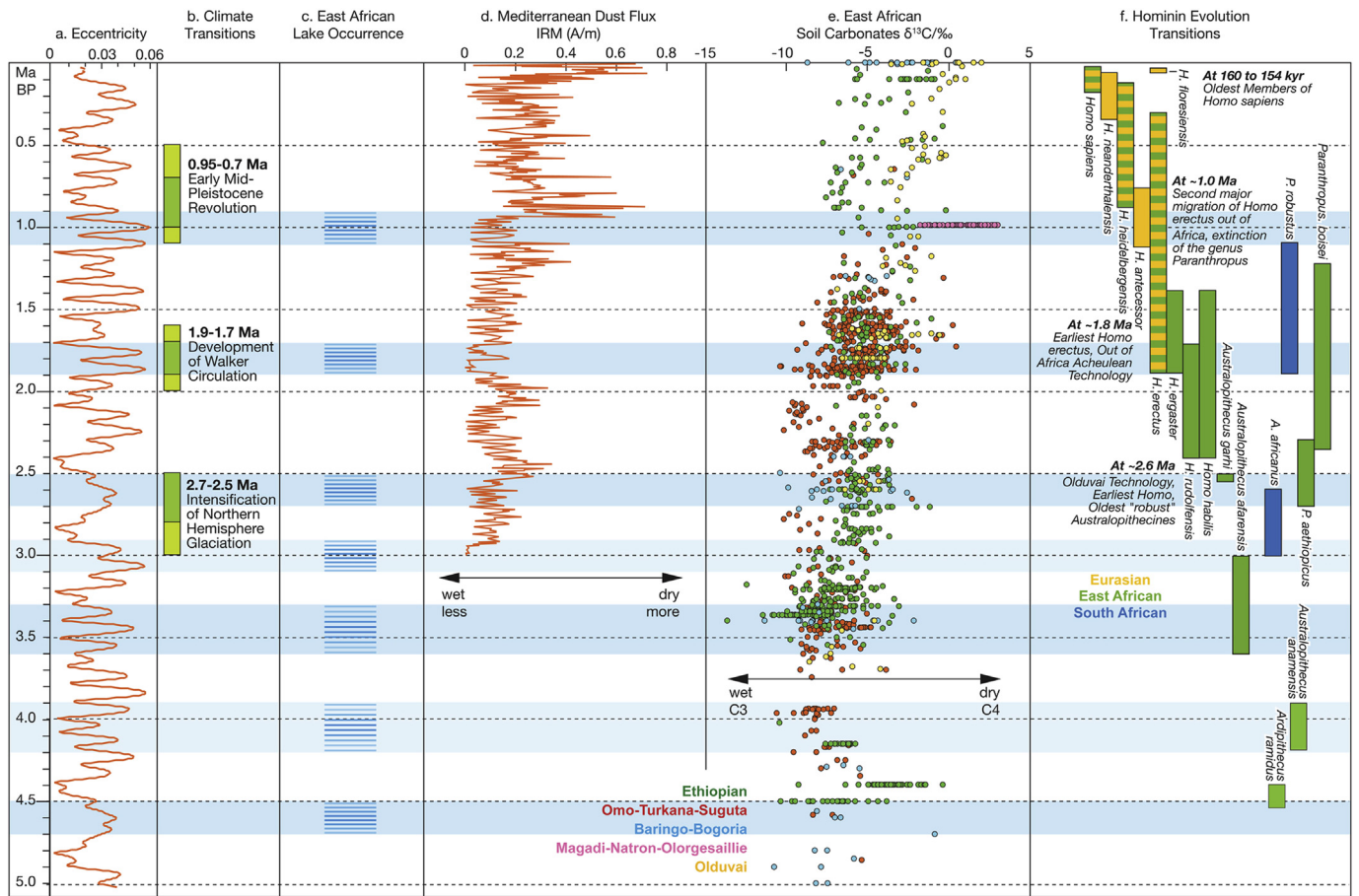


Fig. 4. Comparison of eccentricity variations (Berger and Loutre, 1991), East African lake occurrence (Trauth et al., 2005, 2007; Shultz and Maslin, 2013) with Mediterranean dust flux (Larrasoana et al., 2003), soil carbonate carbon isotopes (Levin, 2013), with Hominin Evolution Transitions (see references in Shultz et al., 2012).

highly localised signal as it records vegetation on the northern coast of the Horn of Africa and is not representative of the EARS. The proposed aridity trend is also supported by climate model simulations (Sepulchre et al., 2006; Prömmel et al., 2013; Sommerfeld et al., in press). These studies demonstrate that as uplift increases, wind patterns became less zonal resulting in a decrease in regional rainfall. Hence as elevation increases, a rain shadow effect occurs that reduces moisture availability on the Rift Valley mountain side, producing the strong aridification trend evident in palaeoenvironmental records (Sepulchre et al., 2006; Prömmel et al., 2013). Maslin et al. (2012) also argue that East African soil carbonate carbon isotope records show increased aridity during the dry periods but that wet periods seem to remain at a similar level (Fig. 4). This suggests that the aridification trend in East Africa is instead a gradual progression towards a more variable climate with intensified arid periods.

In addition to contributing towards the aridification of East Africa, the tectonic activity described above also produced numerous basins suitable for lake formation (Trauth et al., 2010). Fig. 2 illustrates that tectonics was essential for the production of isolated basins in the East African Rift valley within which lakes can form. The southward propagation of rifting, including the formation of faults and magmatic activity, is also reflected in the earliest formation of lake basins in the northern parts of the rift (Fig. 3). For example, the Middle and Upper Miocene saw the beginning of lakes in the Afar, Omo-Turkana and Baringo-Bogoria Basins, but the oldest lacustrine sequences in the central and southern segments of the rift in Kenya and Tanzania are of Early Pliocene age (Tiercelin

and Lezzar, 2002; Trauth et al., 2007). Palaeo-lakes in the northern part of the East African Rift Valley, thus formed earlier than in the South. However, if tectonics were the sole control over the appearance and disappearance of lakes, then either a N–S or NW–SE temporal pattern would be expected. In contrast, what is observed is the synchronous appearance of large deep lakes across a large geographical area at specific times (Trauth et al., 2005), possibly suggesting some other regional climatic control.

2.1. Limits to our current knowledge

There remain two main elements of regional tectonics in Africa that are not completely understood. First is the exact timing and altitude of the uplift. Much work has been done on the timing of key tectonic features, but uplift rates and maximum altitude are still unconstrained, especially for southern Africa. These factors control local rainfall patterns and thus are important for understanding the evolution of African climate. So although we know that progressive uplift and rifting has caused East Africa to dry, we do not know precisely when, or at what pace, these changes occurred (e.g., Forster and Gleadow, 1996; Spiegel et al., 2007; Pik et al., 2008; Wichura et al., 2010). The second factor is what effect tectonics had on vegetation. This is crucial for understanding hominin evolution. For example, at 10 Ma, while the doming of East Africa was occurring, how extensive were rainforests in East Africa (Couvreur et al., 2008)? When did the forest fragment? When did grasslands become important, and more specifically, dominant? Was there a vegetative corridor between southern Africa and

eastern Africa that may have facilitated dispersal and exchange between populations? At the moment we have detailed knowledge of vegetation and environmental conditions at sites containing hominin remains for East Africa and South Africa (e.g., Bonnefille, 1983, 2004, 2010; Kingston et al., 1994, 2007; Feakins et al., 2013; Barboni, 2014; Cerling, 2014). However, these only provide information on the niche that our ancestors inhabited and not the wider environment or regional climatic pattern. Moreover, many of these reconstructions are based on large sequences covering a wide range of time and may be affected by time-averaging (Hopley and Maslin, 2010), which means short-term, large scale variations in environment are grouped together. A very successful approach to these problems has been model reconstruction of climate and vegetation with greatly reduced relief over Eastern Africa (Sepulchre et al., 2006; Prömmel et al., 2013; Sommerfeld et al., in press). The next step would be to produce detailed time-slices through the last 8 million years with both relief and global climate applied to a regional climate and vegetation model.

3. East African rift system lakes

The sedimentary record of East Africa is rich in lake deposits (e.g., Gasse, 2000; Tiercelin and Lezzar, 2002; Barker et al., 2004; Trauth et al., 2005). This is because the southward propagation of rifting created lake basins along the entire length of the rift valley. A compiled record of lake occurrence was collated using the initial work of Trauth et al. (2005, 2007) and updated by Shultz and Maslin (2013). The collation is based on published geological evidence for the appearance of either deep ephemeral or shallow alkaline lakes in seven major basins in 50 kyrs sections over the last 5 Myrs (Tiercelin and Lezzar, 2002; Trauth et al., 2005, 2007, 2010; Deino et al., 2006; Kingston et al., 2007; Lepre et al., 2007; Joordens et al., 2011; McDougall et al., 2012; Feibel, 2011 and pers. comm.). These Basins, shown in Fig. 2, are: Olduvai (Tanzania), Magadi-Natron-Olorgesailie (N. Tanzania and S. Kenya), Central Kenya Rift (Kenya), Baringo-Bogoria (Kenya), Omo-Turkana-Suguta (N. Kenya), Ethiopian Rift (South and Central Ethiopia) and Afar (N. Ethiopia). The following indicators, as defined by Trauth et al. (2007), were used for large and deep freshwater palaeolakes: 1) the presence of pure white and frequently laminated diatomite, 2) typical freshwater diatom assemblages, and 3) a diatom flora clearly dominated by planktonic species, whereas benthic or epiphytic taxa are less frequent or absent. Shallow and more alkaline lake were defined by: 1) a significant clastic component in the diatomites, 2) diatom indicators for higher alkaline conditions, and 3) a significant benthic-epiphytic diatom community and the presence of abundant phytoliths and sponge spicules. Based on these characteristics, it is possible to classify the palaeoenvironments in the lake basins (Fig. 3). A deep freshwater lake, characterised by a size of several 100 km², water depths in excess of 150 m, and a neutral pH, is documented by pure white and frequently laminated diatomites, and planktonic/littoral diatom ratios reaching 10 and 100. In contrast, shallow and more alkaline lakes are typically less than 150 km² in size, have water depths much less than 100 m (often only a few metres), and dry out episodically. The pH of these lakes is often at around 8, but may reach significantly higher values. The corresponding sediments are clayey diatomites and silts, containing a diatom flora with planktonic/littoral diatom ratios of less than 1 (typically between 0.1 and 0.3 and, in some cases, up to 0.8). In extreme cases, the sediments contain authigenic silicates, such as zeolites, that document chemical weathering of silicic volcanic glass in an extremely alkaline lake environment. No lake, however, indicates the complete absence of lake sediments. Age control for the lake periods was obtained by published radiometric age determinations usually of anorthoclase and sanidine phenocryst

concentrates from several tuff beds and lava flows. This compilation suggests that there were significant late Cenozoic lake periods between 4.6 and 4.4 Ma, 4.0–3.9 Ma, 3.6–3.3 Ma, 3.1–2.9 Ma, 2.7–2.5 Ma, 2.0–1.7 Ma, 1.1–0.9 Ma and 0.2–0 Ma before present in East Africa (Fig. 3). These occurrences correlate with the 400- and 800-kyrs components of the eccentricity cycle, suggesting a major role in lake formation for extreme amplitude fluctuations in precession (Fig. 4).

On very long time scales of 100,000s years, changes in lakes are primarily determined by tectonics, which initially creates but also destroys lake basins. However, tectonics also affects conditions in a lake over shorter time scales, such as through changes to the shape and size of catchments and drainage networks (e.g. Bergner et al., 2009; Olaka et al., 2010; Trauth et al., 2010; Feibel, 2011). Furthermore, tectonics shapes the morphology of lake basins and hence contributes to the sensitivity of these lakes to changes in the precipitation/evaporation balance (Olaka et al., 2010; Trauth et al., 2010). In the EARS many of the lake basin have become very sensitive to small changes in rainfall and are referred to as amplifier lakes (Trauth et al., 2010). These amplifier lakes are very sensitive to moderate climate change. For example, the water level of the Early Holocene palaeo-Lake Suguta rose to 300 m during a +25% change in precipitation during the African Humid Period (ca 15,000–5000 yr BP) (Garcin et al., 2009; Borchardt and Trauth, 2011; Junginger and Trauth, 2013; Junginger et al., 2014). On the other hand, as hydrological modelling suggests, large water bodies buffer rapid shifts in climate due to their delayed response to changes in the precipitation-evaporation balance (Borchardt and Trauth, 2012). Thus theoretically, lakes can be very quick to form but their effect on the local climate will create an inertia resisting its removal or disappearance.

3.1. Limits to our current knowledge

The identification and correlation of episodes of deep and shallow lake occurrence between lake basins is unfortunately hampered by ambiguous interpretation of environmental indicators or proxies within the sediments (Owen et al., 2008, 2009; Trauth and Maslin, 2009). Moreover, the fragmented nature of the lake sediments can give rise to highly localised interpretations of environmental variations. Thus, the compilation of all published data has been used to provide a regional overview of lake occurrence to mitigate against the local influences of a region for which the landscape becomes more heterogeneous over time. Furthermore, fluctuating sedimentation rates and hiatuses between radiometric age dates, which themselves contain errors, complicate the assessment of the actual timing of environmental changes (e.g., Blaauw, 2010; Schumer et al., 2011; Trauth, 2014). Standardised terminology and interpretation of sedimentology between the key sites is required and new statistical methods are needed to model hiatuses and lake sediment occurrence between dispersed age controls (Trauth, 2014).

4. Late Cenozoic global climate transitions

During the period of early human evolution in Africa there are five major transitions or climate events that would have influenced African climate: 1) the emergence and expansion of C₄ dominated biomes (~8 Ma onwards), 2) the Messinian Salinity Crisis (6–5.3 Ma), 3) the intensification of Northern Hemisphere Glaciation (iNHG, 3.2–2.5 Ma), 4) the development of the Walker Circulation (DWC, 2.0–1.7 Ma), and 5) the Early–Middle Pleistocene Transition (EMPT, 1.2–0.8 Ma).

The emergence and expansion of C₄ grass-dominated biomes which took place during the Mid to Late Miocene (Edwards et al.,

2010; Brown et al., 2011), is thought to have been driven by lower atmospheric carbon dioxide. This is a global climate event as C₄ grass-dominated biomes had long-lasting impacts on continental biota; including major shifts in vegetation structure, characterised in Africa by shrinking forests and the emergence of more open landscapes accompanied by large-scale evolutionary shifts in faunal communities. A threshold in carbon dioxide concentrations was breached at ~30 Ma, leading to the development of the C₄ photosynthetic pathway (Tippie and Pagani, 2007). Ségalen et al. (2007) dispute this early emergence and suggest, from paedogenic and biogenic carbonate $\delta^{13}\text{C}$ data, that evidence for C₄ plants before ~8 Ma is weak. These contrasting views suggest differing patterns of environmental change and their links to faunal shifts, including those of early hominins. There is clear, undisputed evidence for the emergence of substantial C₄ biomass from 7 to 8 Ma (Cerling, 2014) while C₄ plants appeared later in mid-latitude sites.

The second regional climate event is the Messinian Salinity Crisis. The tectonic closure of the Strait of Gibraltar led to the transient isolation of the Mediterranean Sea from the Atlantic Ocean. During this isolation the Mediterranean Sea desiccated several times, resulting in vast evaporite deposits. This Messinian Salinity Crisis removed nearly 6% of all dissolved salts in the oceans, changing the alkalinity. The onset of the Messinian Salinity Crisis at 5.96 ± 0.02 Ma while full isolation occurred at 5.59 Ma (Krijgsman et al., 1999; Roveri et al., 2008, in press 2014). Normal marine conditions were re-established with the Terminal Messinian Flood at 5.33 Ma (Bickert et al., 2004) and a significant amount of salt was returned to the world's oceans via the Mediterranean-Atlantic gateway. At present, little is known concerning the effect of the Messinian Salinity Crisis on Northern and East African climate. Climate modelling studies indicate that there was no impact in Southern Africa with only weak precipitation changes in East Africa (Murphy et al., 2009; Schneck et al., 2010). The spectral resolution of the existing studies may lead to uncertainties in their representation of African topography (Schneck et al., 2010) and further work is needed (Roveri et al., in press 2014).

The intensification of Northern Hemisphere Glaciation (iNHG) was the culmination of long-term high latitude cooling, which began with the Late Miocene glaciation of Greenland and the Arctic, and continued through to the major increases in global ice volume around 2.55 Ma (Li et al., 1998; Maslin et al., 1998). This intensification of Northern Hemisphere glaciation seems to have occurred in three key stages: a) the Eurasian Arctic and Northeast Asia were glaciated at c. 2.75 Ma, b) glaciation of Alaska at 2.70 Ma, and c) the significant glaciation of the North East American continent at 2.54 Ma (Maslin et al., 2001). The extent of glaciation did not evolve smoothly after this, but instead was characterised by periodic advances and retreats of ice sheets on a hemispherical scale – the 'glacial-interglacial cycles'. Various causes of the iNHG have been postulated including the uplift and erosion of the Tibetan-Himalayan plateau (Ruddiman and Raymo, 1988; Raymo, 1991, 1994), the deepening of the Bering Straits (Einarsson et al., 1967) and/or the Greenland–Scotland ridge (Wright and Miller, 1996), the restriction of the Indonesian seaway (Cane and Molnar, 2001), and the emergence of the Panama Isthmus (Keigwin, 1978, 1982; Keller et al., 1989; Mann and Corrigan, 1990; Haug and Tiedemann, 1998). It is also possible that there was no trigger, but that the long-term decrease in atmospheric CO₂ (Fedorov et al., 2013) passed a critical threshold (Crowley and Hyde, 2008; DeConto et al., 2008; Abe-Ouchi et al., 2013).

In terms of the tropics and particularly Africa, there is evidence for a more extreme climate from 2.7 Ma onwards. deMenocal (1995, 2004) suggests there was significant increase in the amount of dust coming off the Sahara and Arabia, indicating aridity in the region in response to the iNHG; though this has been disputed by Trauth

et al. (2009). Meanwhile, there is also evidence for the growth and decline of large lakes between 2.7 and 2.5 Ma in the Baringo–Bogoria Basin (Deino et al., 2006; Kingston et al., 2007) and on the eastern shoulder of the Ethiopian Rift and in the Afar Basin (Williams et al., 1979; Bonnefille, 1983). The presence of large, ephemeral lakes such as these is indicative of a highly variable and changing climatic regime.

Until recently, the iNHG and the EMPT were the only two major climate changes recognized in the last 5 million years. This is because in terms of global ice volume very little happens between 2.5 Ma and 1 Ma; glacial–interglacial cycles occur roughly every 41 kyrs and are of a similar magnitude (Lisiecki and Raymo, 2005). However, a clear shift in long-term records of sea surface temperature (SST) in the Pacific Ocean is evident at 1.9–1.6 Ma (Ravelo et al., 2004; McClymont and Rosell-Melé, 2005; Brierley et al., 2010), when a strong east–west temperature gradient developed across the tropical Pacific Ocean. This change was also matched by a significant increase in seasonal upwelling off California (Liu et al., 2008). Ravelo et al. (2004) suggest this is evidence for the development of a stronger Walker circulation (DWC), as strong easterly Trade winds are required to set up the enhanced E–W SST gradients. They suggest this switch was part of the gradual global cooling and at about 2 Ma the tropics and sub-tropics switched to the modern mode of circulation with relatively strong Walker circulation and cool sub-tropical temperatures. Alternate proxy records of the equatorial SST gradient do not lead to as distinct a transition (Fedorov et al., 2013), yet a change in the Walker circulation about 1.9 Ma coincides with numerous changes in the tropics. For example, Lee-Thorp et al. (2007) use $^{13}\text{C}/^{12}\text{C}$ ratios from fossil mammals to suggest that although there was a general trend towards more open environments after 3 Ma, the most significant environmental change to open, grassy landscapes occurred after 2 Ma rather than 2.4–2.6 Ma as earlier suggested. The re-analysis of terrestrial dust records from the Arabian Sea (deMenocal, 1995, 2004), the eastern Mediterranean Sea (Larrasoana et al., 2003) and off subtropical West Africa (Tiedemann et al., 1994) using a breakfit regression analysis method suggests an increase in aridity and variability on the continent after ~1.9–1.5, which coincides with the DWC (Trauth et al., 2009). At about the same time, there is also evidence for large deep, but fluctuating lakes occurring in East Africa (Trauth et al., 2005, 2007; Fig. 4.7). The DWC provided another interesting twist on African climate: it is thought that a strong east–west temperature gradient in the Pacific Ocean impacts upon the properties of the El Niño–South Oscillation (ENSO) and, as a consequence of that, the Indian Ocean Dipole (IOD) as the main cause of interannual variability in rainfall in the region today (e.g., Saji et al., 1999). Hence we need to understand how changes in interannual variability may have influenced East Africa and how it changed through the Plio-Pleistocene.

The Early–Middle Pleistocene transition (which was previously known as the Mid-Pleistocene Transition or Revolution; Head et al., 2008) is the marked prolongation and intensification of glacial-interglacial climate cycles initiated sometime between 900 and 650 Ka (Mudelsee and Statterger, 1997). Before the EMPT, global climate conditions appear to have responded primarily to the obliquity orbital periodicity (Imbrie et al., 1992). The consequences of this are glacial-interglacial cycles with a mean period of 41 kyrs. After about 800 Ka, glacial–interglacial cycles occur with a much longer mean quasi-periodicity of ~100 kyrs, with a marked increase in the amplitude of global ice volume variations. The ice volume increase may in part be attributed to the prolonging of glacial periods and thus of ice accumulation (Prell, 1984; Shackleton et al., 1988; Berger and Jansen, 1994; Tiedemann et al., 1994; Mudelsee and Statterger, 1997; Abe-Ouchi et al., 2013). The amplitude of ice volume variation may also have been impacted by the extreme

warmth of many of the post-EMPT interglacial periods; similar interglacial conditions can only be found at ~1.1 Ma, ~1.3 Ma and before ~2.2 Ma. The EMPT, in addition to marking a change in periodicity, also marks a dramatic sharpening of the contrast between warm and cold periods. [Mudelsee and Stettin \(1997\)](#) used time-series analysis to review deep-sea evidence spanning the EMPT and summarised the salient features. They suggest that the EMPT was actually a two-step process with the first transition between 940 and 890 Ka, when there is a significant increase in global ice volume, and the dominance of a 41 kyr climate response. This situation persists until the second step, at about 650–725 Ka, when the climate system finds a three-state solution and strong 100 kyr climate cycles begin ([Mudelsee and Stettin, 1997](#)). These three states have more recent analogues and correspond to: 1) full interglacial conditions, 2) the mild glacial conditions characteristic of Marine (oxygen) Isotope Stage (MIS) 3 and 3) maximum glacial conditions characteristic of MIS 2 (i.e., the Last Glacial Maximum (LGM) ([Maslin and Ridgwell, 2005](#)). The EMPT had a significant effect on African climate. [Ségalen et al. \(2007\)](#) concluded that C_4 grasses remained a relatively minor component of African environments until the late Pliocene and early Pleistocene. Paedogenic carbonate $\delta^{13}C$ data from existing localities in East Africa suggest that open ecosystems dominated by C_4 -grass components emerged only during the EMPT (i.e., after ~1 Ma). There is also evidence that the EMPT may have led to the formation of large ephemeral lakes between 1.1 and 0.9 Ma in East Africa e.g., Ologesailie Formation, the Naivasha and Elmenteita–Nakuru basins, and the Afar Basin ([Trauth et al., 2005, 2007](#)).

4.1. Limits to our current knowledge

The major difficulty in understanding the effects of these global climate transitions on African climate is the lack of high-resolution continental records. This problem is particularly acute for southern Africa. The terrestrial realm is severely restricted in the types of proxies that can be utilised, as well as the ability to accurately constrain the ages of the sediments, since in many cases the original record is removed through processes associated with sub-aerial exposure (e.g., [Lowe and Walker, 1984](#)). The continental records that have been published generally do not provide the same level of continuous, detailed climate information as ocean records. Most of these continental records have a resolution greater than 10 kyr, which may cause the problem of climate-averaging ([Hopley and Maslin, 2010](#)), whereby sediment and fauna from two very different climate regimes (say, two precession-scale periods) are lumped together. This means that many of the hominin habitat reconstructions may be incorrect as they combine two very different climates and thus vegetation cover in one signal ([Hopley and Maslin, 2010](#)). Individuals would only experience one of the climates rather than the average one.

At present, in the terrestrial realm, only lakes and caves provide relatively continuous records. Lakes sediments are present throughout East Africa and the long-core drilling program at Lake Malawi has recovered a continuous sediment core record spanning the last 145 ka ([Scholz et al., 2011](#), and references therein). Caves are present in southern Africa, and whilst the cave deposits have yielded abundant specimens, the stratigraphy of the caves is often highly complex (e.g., [Scott, 1999](#)). Most of these sites were quarried first and analysed later, thus severely impacting stratigraphic control. Finally, where there is limited stratigraphic control, records are sometimes dated based on an assumption of cause/association with global events rather than on an independent chronology. For example, the evidence for increased aridity associated with the iNHG was derived, as outlined in [Partridge \(1993\)](#), from geomorphological and biostratigraphic datasets that are not independent

from one another and like many longer-term palaeoclimate records cannot be dated with precision.

5. Influence of orbital forcing on African climate

Orbital forcing has an obvious impact on high latitude climates and influenced late Cenozoic global climate transitions, but it also has a huge influence in the tropics, particularly through precession and its effect on seasonality and thus rainfall. There is a growing body of evidence for precession-forcing of moisture availability in the tropics, both in East Africa during the Pliocene ([deMenocal, 1995, 2004](#); [Trauth et al., 2003](#); [Denison et al., 2005](#); [Deino et al., 2006](#); [Hopley et al., 2007](#); [Kingston et al., 2007](#); [Lepre et al., 2007](#); [Wilson, 2011](#); [Magill et al., 2013](#); [Ashley et al., 2014](#)) and elsewhere in the tropics during the Pleistocene ([Bush et al., 2002](#); [Clemens and Prell, 2003, 2007](#); [Trauth et al., 2003](#); [Wang et al., 2004](#); [Cruz et al., 2005](#); [Tierney et al., 2008](#); [Verschuren et al., 2009](#); [Ziegler et al., 2010](#)). The precessional control on tropical moisture has also been clearly illustrated by climate modelling ([Clement et al., 2004](#)) which showed that an 180° shift in precession could change annual precipitation in the tropics by at least 180 mm/year and cause a significant shift in seasonality. This is on the same order of magnitude as the effect of a glacial–interglacial cycle in terms of the hydrological cycle. In contrast, precession has almost no influence on global or regional temperatures. Support for increased seasonality during these periods of climate variability also comes from mammalian community structures ([Reed, 1997](#); [Bobe and Eck, 2001](#); [Reed and Fish, 2005](#)) and hominin palaeodiet reconstructions ([Teaford and Ungar, 2000](#)).

In northern and eastern Africa there are excellent records of precessional-forcing of climate including: 1) East Mediterranean marine dust abundance ([Larrasoana et al., 2003](#)), which reflects the aridity of the eastern Algerian, Libyan, and western Egyptian lowlands located north of the central Saharan watershed, 2) sapropel formation in the Mediterranean Sea, which is thought to be caused by increased Nile River discharge ([Lourens et al., 2004](#); [Larrasoana et al., 2013](#)), and 3) dust records from ocean sediment cores adjacent to West Africa and Arabia ([deMenocal, 1995, 2004](#); [Clemens and Prell, 2003, 2007](#); [Ziegler et al., 2010](#)). There is also a growing body of evidence for precessional forcing of East African lakes. [Deino et al. \(2006\)](#) and [Kingston et al. \(2007\)](#) have found that the major lacustrine episode of the Baringo Basin in the Central Kenyan Rift between 2.7 and 2.55 Ma actually consisted of five palaeo-lake phases separated by a precessional cyclicity of ~23 kyr. While [Magill et al. \(2013\)](#) have found biomarker stable carbon isotope evidence in Olduvai lake sediment of precessional forced variations between open C_4 grasslands and C_3 forest between 1.8 and 1.9 Ma. There is also evidence for precessional forcing of the 1.9–1.7 Ma lake phase identified in the KBS Member of the Koobi Fora Formation in the northeast Turkana Basin in Kenya ([Brown and Feibel, 1991](#); [Lepre et al., 2007](#)). Precessional forcing of vegetation change also occurred at this time in Southwest Africa, independent of glacial–interglacial cycles ([Denison et al., 2005](#)). During the same period an oxygen isotope record from the Buffalo Cave flowstone (Makapansgat Valley, Limpopo Province, South Africa) shows clear evidence of precessionally-forced changes in rainfall ([Hopley et al., 2007](#)). The occurrences of these environmental changes are in-phase with increased freshwater discharge and thus sapropel formation in the Mediterranean Sea ([Lourens et al., 2004](#); [Larrasoana et al., 2013](#)), and coincide with dust transport minima recorded in sediments from the Arabian Sea ([deMenocal, 1995, 2004](#); [Clemens et al., 1996](#)). Hence, the lake records from East Africa and the Arabian Sea dust records document extreme climate variability with precessionally-forced wet and dry phases.

Table 2

Late Pliocene – early Pleistocene compilation of published pan-East African palaeo-records that contain evidence of precessional forcing of the local environment.

Location	Date range (Ma)	Number of precessional cycles	Evidence for millennial scale variability	Proxy data	References
East Africa					
Turkana Basin (Koobi Fora Ridge)	~1.9–1.6 Ma	6 (authors suggest it could also be obliquity)	No	Lithology	Brown and Feibel (1991), Lepre et al. (2007)
Turkana Basin (Karari Ridge: upper Burgi Member)	1.960–1.835	5.5	No	Lithology and Sr isotopes	Joordens et al. (2011)
Baringo Basin	2.7–2.55	5	Yes	Lithology and diatom oxygen isotopes	Deino et al. (2006), Kingston et al. (2007), Wilson (2011), Wilson et al. (submitted)
Ologesailie basin	1.1 and 0.9	(authors suggest precessional cycles but not how many)	Yes	Lithology	Potts et al. (1999, 2013), Owen et al. (2008)
Olduvai Gorge	1.85–1.74	5.5	No	Lithology and biomarker carbon isotopes	Ashley (2007), Ashley et al. (2014), Magill et al. (2012, 2013)
North Africa					
East Mediterranean	3.00–0	~130	No	Dust records	Larrasoña et al. (2003)
East Mediterranean	5.35–0	~150	No	Sapropels	Lourens et al. (2004), Larrasoña et al. (2013)
Indian Ocean region					
Arabian Sea	3.00–0	~130		Dust records	Clemens and Prell (2003, 2007), deMenocal (1995; 2004)
South Africa					
Buffalo Cave flowstone	2.00–1.52	~21		Oxygen isotope	Hopley et al. (2007)

Although the direct influence of orbital forcing on African climate seems straightforward, isolating the driving forces is extremely complex. It is clear that high-latitude orbital forcing influences glacial-interglacial cycles, which in turn seems to have an increasing influence on African climate through the Pleistocene. The main effects are: 1) Pole-Equator temperature gradients, 2) sea surface temperatures (SST's), 3) wind strength and direction, and 4) atmospheric carbon dioxide, methane and water vapour content. Studies of late Quaternary palaeovegetation records indicate that equatorial African ecosystems are highly sensitive to glacial-interglacial cycles, and that these are associated with atmospheric CO₂ changes and regional temperature changes, resulting in rapid shifts in pollen assemblage indices (Lezine, 1991; Bonnefille and Mohammed, 1994; Elenga et al., 1994), charcoal fluxes (Verardo and Ruddiman, 1996), and relative proportions of C₃ (trees, shrubs, cold-season grasses and sedges) and C₄ (warm-season grasses and sedges) biomarkers (Huang et al., 1999; Ficken et al., 2002; Schefuß et al., 2005). There is also the combined effect of high and low latitude orbital forcing which must be considered. After the EMPT we can consider four 'climate phases': 1) glacial with positive precession, 2) glacial with negative precession; 3) interglacial with positive precession; and 4) interglacial with negative precession (Maslin et al., 2005). All of these phases/periods have a distinct effect on the moisture, temperature and greenhouse gas content of the atmosphere. An additional complication has been proposed by Berger et al. (2006). During any year in the tropics, there are two insolation maxima when the sun is over the Equator (spring and autumn equinoxes), and two insolation minima when the sun is over the Tropic of Cancer and Capricorn (summer and winter solstice). The magnitude of the maxima and minima, thus insolation at equinox and solstice, are controlled by precession. Berger et al. (2006) has calculated the maximum insolation year and shown that it peaks every ~11.5 kyrs. This is because as the spring equinox's insolation maximum is reduced, the autumnal equinox's insolation maximum is increased. Berger et al. (2006) calculated the maximum seasonality, defined as the difference between the maximum and minimum solar insolation in any one year, and found a cyclic seasonality of 5 kyrs. Climate in tropical Africa could, therefore, respond to orbital forcing of seasonality at both 11.5 kyrs and 5 kyrs intervals. Evidence for this half

precession forcing of East Africa climate has been found in lake sediments by Trauth et al. (2003) and Verschuren et al. (2009).

5.1. Limits to our current knowledge

We are only just starting to understand the complex relationship between orbital forcing and African climate. This complexity is in part due to the fact that much of tropical Africa is influenced by high latitude orbitally-forced climate changes and thresholds as well as local, direct orbital forcing, which is dominated by precession. Table 2 shows the preliminary evidence that supports a precessional (23 kyrs) control on moisture availability in East Africa (Clemens and Prell, 2003, 2007; Deino et al., 2006; Kingston et al., 2007; Ashley, 2007; Wilson, 2011, 2013; Ashley et al., 2014), South Africa (Partridge, 1993, 1997; Hopley et al., 2007), southwest Africa (Denison et al., 2005) and North Africa and the Mediterranean (Larrasoña et al., 2003, 2013; Lourens et al., 2004). The fundamental question is whether the precessional forcing of local climate at these particular sites can be extrapolated and applied to the whole of East Africa and beyond. Only by accumulating more data from key palaeo-lake sites will it be possible to definitely answer this question. In addition to this, more evidence is required to better understand the role of climate forcing at half- and quarter-precessional periods, and its effect on seasonality in the tropics.

6. Early human evolution

The fossil record suggests four main stages in hominin evolution: 1) the appearance of the earliest (proto) hominins attributed to the genera *Sahelanthropus*, *Orrorin* and *Ardipithecus* between four and seven million years ago, 2) the appearance of the *Australopithecus* genus around four million years ago and the appearance of the robust *Paranthropus* genus around 2.7 Ma, 3) the appearance of the genus *Homo* around the Plio-Pleistocene boundary between 1.8 and 2.5 Ma and 4) the appearance of anatomically modern humans around 200 ka. The taxonomic classification of many specimens, as well as their role in the evolution of modern humans is continually discussed (e.g., Lordkipanidze et al., 2013). What is not disputed is that, apart from *Sahelanthropus* remains from Chad, all the earliest specimens for

each of the main genera were found in the East African Rift System. Thus, although the World Heritage site, the Cradle of Humankind, is in South Africa, the available evidence currently suggests that all of the major stages in human evolution (at 7 Ma, 4 Ma, 2 Ma, and 200 ka) occurred in the East Africa (Wood, 2014).

The earliest disputed hominin is *Sahelanthropus chadensis*, dated to approximately seven million years ago (Brunet et al., 2002; Wood, 2002). The remains are limited to cranial fragments that suggest a mosaic of hominin and non-hominin features and a brain size equivalent to modern chimpanzees (Guy et al., 2005). The lack of post-cranial remains makes it extremely difficult to reconstruct its lifestyle and whether it was bipedal or whether it was truly a hominin. The next putative hominin is *Orrorin tugenensis* from Western Kenyan deposits aged around 6 Ma (Senut et al., 2001) but its taxonomic position, lifestyle and locomotion are all disputed due to the fragmentary nature of the specimens. Both *Sahelanthropus* and *Orrorin* have been suggested to be members of a clade that includes *Ardipithecus* (Guy et al., 2005). The oldest member of the *Ardipithecus* genus is *Australopithecus kadabba*, whose fossil evidence consists only of fragmentary teeth and skeletal remains dated to approximately 5.5 Ma (Haile-Selassie et al., 2004). A much more extensive fossil record exists for the second member of the genus, *Ardipithecus ramidus*. *Ardipithecus* had brain and body sizes roughly equivalent to modern chimpanzees, their teeth indicate a highly omnivorous diet and their post-crania suggest a lifestyle of arboreality coupled with primitive bipedality (White et al., 2009). The fauna and vegetation associated with the *A. ramidus* specimens in the Awash valley dating to around 4.4 Ma suggest a woodland–forest matrix habitats, associated with significant rainfall and water availability (White et al., 2009; Cerling et al., 2010; Cerling, 2014). This appearance of bipedality in closed woodland environments undermines theories of bipedality evolving as an adaptation to open habitats.

The first members of the *Australopithecus* genus, attributed to *Australopithecus anamensis*, appeared around four million years ago (Leakey et al., 1995). These individuals show strong evidence of bipedality combined with primitive cranial features. They are followed by *Australopithecus afarensis*, which is very well known from the fossil record and includes the remarkably complete ‘Lucy’ specimen. *Afarensis* still retains a small brain size, yet the post-cranial morphology is very similar to modern humans and suggests a lifestyle strongly adapted to long-distance walking (Stern and Susman, 1983). *Australopithecus africanus*, the first hominin found in South Africa, is similar to *A. afarensis* but with more ape-like limb proportions yet less primitive teeth (Green et al., 1997). The final gracile australopithecine is *A. anamensis*, associated with 2.5 Ma old deposits in the Awash Valley, Ethiopia. It is characterised by a longer femur than the other Australopithecines, suggesting longer strides and more efficient walking style (Green et al., 1997). In a separate development, a group of hominins with robust dentition and jaw muscles appeared around 2.5 Ma. These hominins, generally attributed to the *Paranthropus* genus, include the East African *Paranthropus aethiopicus* (2.5 Ma) and *Paranthropus bosieyi* (2.3–1.2 Ma) and the Southern African *Paranthropus robustus* (1.8–1.2 Ma). Who have been attributed to more open habitats (Cerling, 2014), though the evidence to support this inference has been questioned (Wood and Strait, 2004).

The first fossil evidence of *Homo* comes from 1.8 to 1.9 million year old EARS deposits. *Homo habilis* had a gracile morphology similar to the australopithecines (Wood, 2014), and a brain size only slightly larger, leading to some arguing it should not be classified as *Homo* (Collard and Wood, 2007). *H. habilis* was then followed by the appearance of *Homo erectus sensu lato*, which is associated with sweeping changes in brain size, life history, and

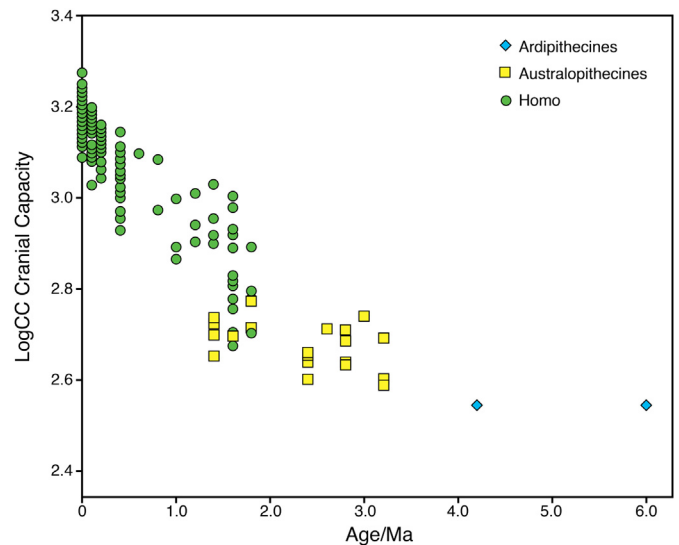


Fig. 5. Comparison of the log of hominin brain capacity for fossils covering the last 6 million years (data from Shultz et al., 2012 updated in Shultz and Maslin, 2013).

body size and shape. Post-cranially, *H. erectus* is very similar to anatomically modern humans. Inferences from fossil demography are that development slowed down, coupled with decreased inter-birth. The final stages in the evolution of modern humans were the appearance of *Homo heidelbergensis* around 800 ka and anatomically modern humans around 200 ka.

Arguably the most important episode in hominin evolution occurred in East Africa around 1.8–1.9 Ma when hominin diversity reached its highest level with the appearance of the robust *Paranthropus* species, as well as the first specimens attributed to genus *Homo* (*sensu stricto*). In addition to speciation, a second major process that begins during this period is the episodic migration of hominins out of the Rift Valley and into Eurasia. This period also witnessed the most dramatic increases in hominin brain size; early representatives of the *H. erectus sensu lato* (*H. erectus* and *Homo ergaster*) in Africa had a brain that was >80% larger than the gracile australopithecine *A. afarensis* and ~40% larger than *Homo* (*Australopithecus*) *habilis* (Fig. 5). In contrast, from the appearance of the early australopithecines until the appearance of the first member of the genus *Homo*, there was remarkably little change in hominin brain size.

The emergence of the *H. erectus sensu lato* in East Africa represents a fundamental turning point in hominin evolution. Not only was there a dramatic increase in brain size, but also in life history (shortened inter-birth intervals, delayed development), body size, shoulder morphology allowing throwing of projectiles (Roach et al., 2013), adaptation to long distance running (Bramble and Lieberman, 2004), ecological flexibility (Hopf et al., 1993) and social behaviour (Antón, 2003). Some of these changes are consistent with a change in strategy towards flexibility and the ability to colonise novel environments. In contrast, the robust *Australopithecus* sp. adopted specialised habitat and dietary strategies (Reed, 1997; Reed and Russak, 2009). Thus, two strategies arose during this period, one of increased flexibility and one of increased specialisation. With the appearance of *H. erectus*, brain size increased significantly and continued to increase over the following 500 kyrs, followed by additional step increases between 0.8 and 1 Ma, at 200 ka and finally again at 100 ka (Shultz et al., 2012, Fig. 5). These final stages of increased brain capacity were due to the appearance of *H. heidelbergensis* around 800 ka and anatomically modern humans around 200 ka.

6.1. Limits to our current knowledge

The recent expansion of the hominin fossil record has been dramatic, with eleven new species and four new genera named since 1987. This richer fossil record has provided two major improvements. Firstly, this has led to a much greater understanding of the range of variation in the hominin phenotype, including in 'real' biological populations with evidence from Atapuerca, Dmanisi, and Hadar. Secondly, extensive use of new dating techniques has provided chronological precision to link those phenotypes to the environments in which they evolved. However the fossil record is still very limited with many gaps, the most significant for this study is the lack of cranial capacity data between 2 Ma and 2.5 Ma. There are also considerable discussions about defining the new species and genera (Lordkipanidze et al., 2013), which has an influence on the diversity curves presented in Fig. 6. However, conflating or expanding the defined species has little overall influence on the diversity pattern as it is clear when new species emerge but not necessarily how many. The other key debate is where all the new hominin species evolved. The fossil record at the moment suggests that the majority of the new species evolved in East Africa and then dispersed outwards. This is supported by the current brain capacity evidence, which suggests brain expansion occurs first in East Africa and only appears elsewhere once there has been a dispersal event. However it should be noted that other authors suggest South Africa, European and Asian origins for hominin speciation.

7. Linking African palaeoclimate with early human evolution

The relationship between climate and human evolution seems intuitive and indeed environmental factors have been suggested as a driving force in hominin evolution by many authors (See Kingston, 2007, for detailed history). Vrba (1985) first identified global climate change as a cause of African mammalian evolution by documenting radiations in bovid species at ~2.5 Ma coincident with the iNHG, which led to the development of the *turnover pulse hypothesis*. However, with greater knowledge of African palaeoclimates and mammalian fossil records, the timing if not the underlying mechanisms have been questioned. When the *turnover pulse hypothesis* was first developed, the field of palaeoclimatology was in its infancy, and through subsequent scientific ocean drilling it has become clear that 1) the iNHG was a long-term intensification beginning much earlier than 2.5 Ma (Tiedemann et al., 1989), and 2) connections between high latitudes and low to middle latitudes are not as straightforward as originally thought. The concept that significant global climate change forced major evolutionary changes in hominins remains pertinent, but both the idea of a turnover and the timing of such events have changed. It seems that iNHG had less of an impact on the region (e.g., Behrensmeyer et al., 1997; Faith and Behrensmeyer, 2013) than the development of Walker Circulation at ~1.8 Ma (Ravelo et al., 2004). With greater understanding of African palaeoclimates has also come new thinking about human evolution. The *variability selection hypothesis* (Potts, 1996, 1998, 2013) suggests that a long-term trend with an increasingly complex intersection of orbitally-forced changes in insolation and earth-intrinsic feedback mechanisms results in extreme, inconsistent environmental variability selecting for behavioural and morphological mechanisms that enhance adaptive variability. However currently we do not have evidence for increased variability of climate nor does it explain the pulsed nature of human evolution.

There is now evidence, presented above, of periods of extreme environmental variability during the Plio-Pleistocene (Trauth et al., 2005, 2007, 2010; Deino et al., 2006; Kingston et al., 2007; Maslin and Trauth, 2009; Magill et al., 2013; Potts, 2013; Ashley et al.,

2014). These periods of extreme climate variability would have had a profound effect on the climate and vegetation of East Africa and, we suggest, human evolution. Hominin evolution in East Africa has distinct speciation events some of which are linked to increasing brain size. Figs. 5 and 6 show a new compilation of estimated cranial capacity (Shultz et al., 2012). Current available evidence suggests that hominin encephalisation is a combination of processes with an underlying gradual trend towards larger brains, punctuated by several large step increases at ~1.9 Ma and ~200 Ka (Fig. 5). By collating all available palaeoclimate data (e.g. the global benthic foraminifera $\delta^{18}\text{O}$ record, regional aeolian dust flux data and the East African lake record), Shultz and Maslin (2013) found that hominin speciation events and changes in brain size seem to be statistically linked to the occurrence of ephemeral deep-water lakes (Fig. 6). An example is the appearance of the *H. erectus sensu lato*, which is associated with the period of maximal ephemeral lake coverage (2 Ma). The expansion in cranial capacity occurs during one of only two periods when there is evidence for at least 5 of the 7 major intra-rift lake basins being active. Subsequently, the underlying trend towards increasing brain size in *Homo* is most strongly correlated with both decreases in lake presence and high levels of dust deposition in the Mediterranean record (Shultz and Maslin, 2013), indicating drier conditions in East Africa (Larrasoana et al., 2003, 2013; Trauth et al., 2009). Shultz and Maslin (2013) suggested that large steps in brain expansion in East Africa may have been driven by climate variability while the smaller steps were due to regional aridity.

The periodic hominin dispersal events also seem to correlate with periods of high climate variability. It has been suggested that both lake presence and absence could be associated with these dispersal events (Trauth et al., 2010; Shultz and Maslin, 2013). For example, when the lake basins are dry they become 'hyper-arid' and thus uninhabitable and hence hominin populations would have been forced to migrate to the north and south (Trauth et al., 2010). However severe lack of resources would mean there was only a small and possibly shrinking population that could migrate. The absence of lakes may have facilitated allopatric speciation in key refugia such as Turkana, which may have remained wet. Dispersal is thus more likely to have occurred when the basins were completely filled with water, as there would have been limited space for the hominin populations on the tree covered Rift shoulders and river flood plains (Shultz and Maslin, 2013). The wet conditions could have been more conducive to dispersal because hominin populations could expand due to the availability of water and food and could follow the Nile tributaries northward and through a green Lavant region (Larrasoana et al., 2013). So the occurrence of deep freshwater lakes would have forced expanding hominin populations both northwards and southwards generating a pumping effect pushing them out of East Africa towards the Ethiopian highlands and the Sinai Peninsula or into Southern Africa with each successive precessional cycle (Shultz and Maslin, 2013).

Fundamental to understanding which evolutionary mechanisms could have applied to hominins in East Africa are the speed and form of the transitions between lakes appearing and disappearing from the landscape. At first it may appear that orbitally-forced climatic oscillations may be too long-term to have significant effects on biota. However, this does not take account of the sinusoidal nature of orbital forcing or the threshold nature of the African lake systems. All orbital parameters are sinusoidal, which means that there are periods of little or no change followed by periods of large change. For example, the sinusoidal precessional forcing at the equator consists of periods of less than 2000 years during which 60% of total variation in daily insolation and seasonality occurs. These are followed by ~8000 years when relatively little change in daily insolation occurs (Maslin et al., 2005). Hence,

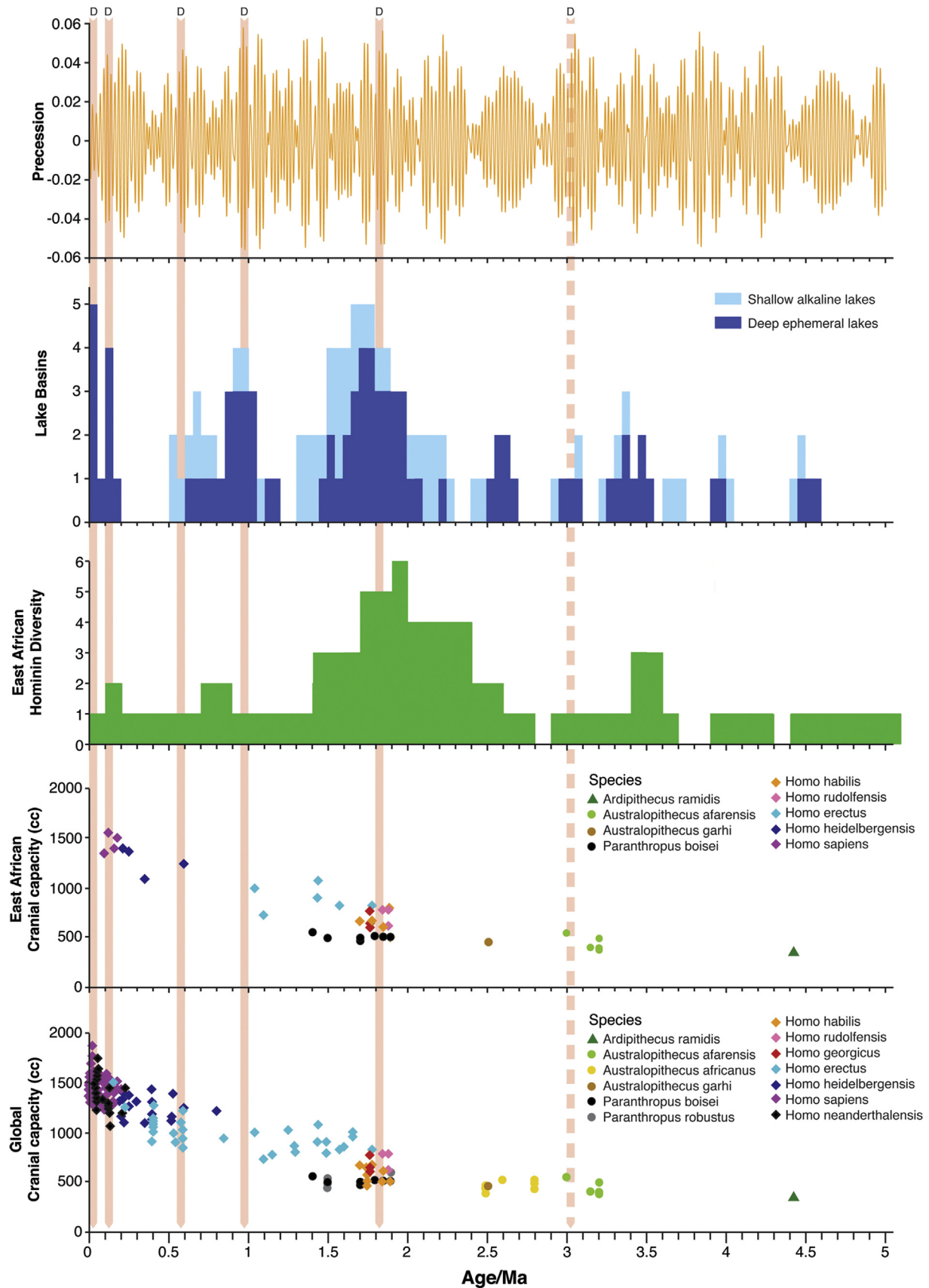


Fig. 6. Top panel shows precessional forcing followed by the East African Rift valley lake variability shown as the number of Basin containing deep or shallow lakes. Lake Basin occupation was calculated by collating the published geological evidence for the appearance of either deep ephemeral or shallow alkaline lakes in seven major Basins (see text). Middle panel shows East African hominin species diversity over time, which was calculated every 100 kyrs interval using first (FAD) and last appearance dates (LAD) from the literature (Shultz et al., 2012). Bottom panels show hominin brain capacity estimates for Africa and for Africa and Eurasia combined. Hominin specimen dates and brain size estimates were taken from Shultz et al. (2012). *Homo erectus* and *H. ergaster* were treated as a 'super-species' referred to in the Figure key and text as '*Homo erectus (sensu lato)*'. Hominin dispersal dates were estimated by FAD of hominin specimens outside of EARS and are shown by the pink bars labeled 'D' (arrows show out of Africa, dotted within Africa only).

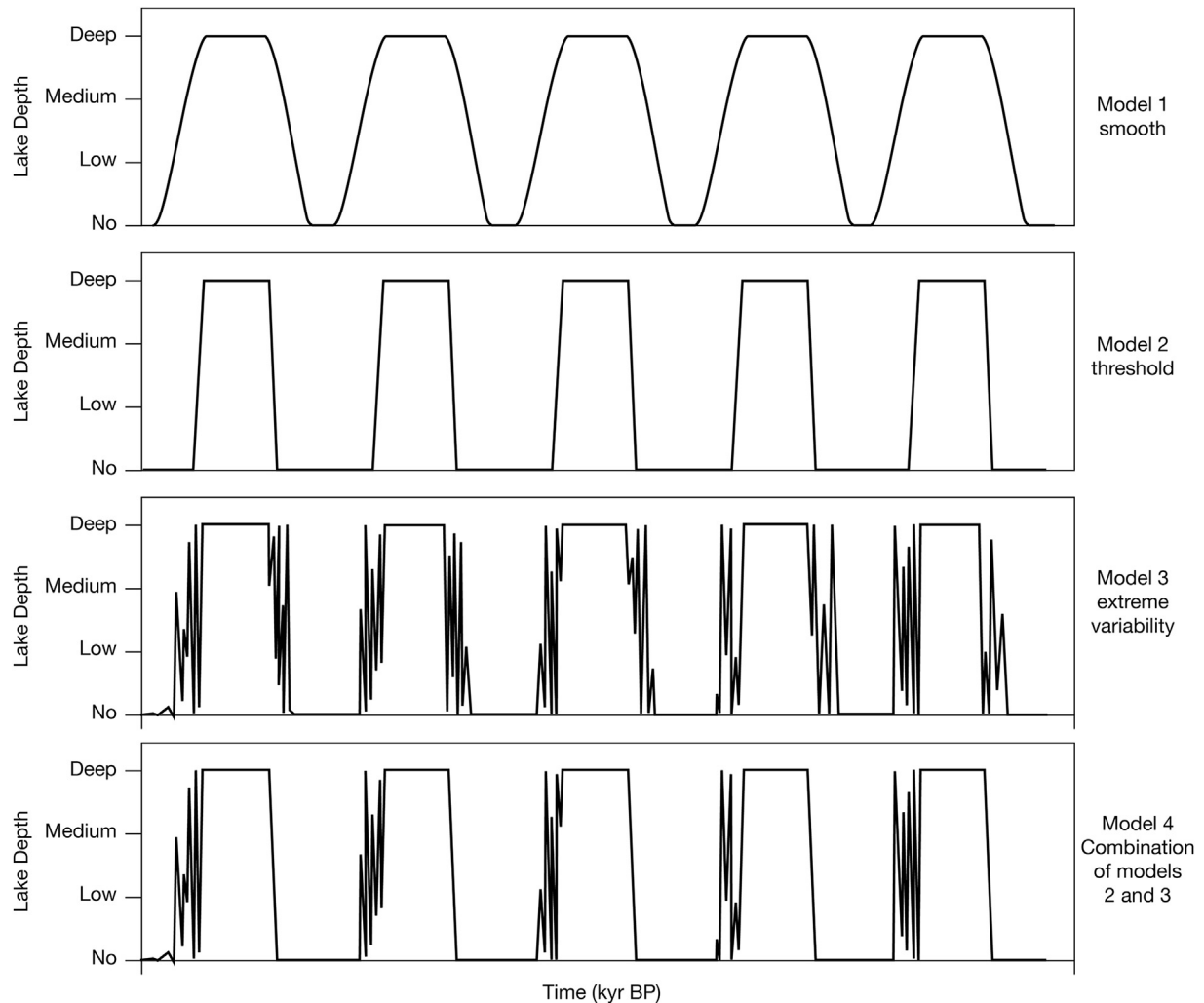


Fig. 7. Four theoretical models of possible lake changes in East Africa during the Plio-Pleistocene and their implications for the causes of human evolution (see main text). Model 1 'Smooth' and relatively slow transitions from full to no lake conditions, which would imply either high energy wet conditions or prolonged aridity may have influenced human evolution, Model 2 'Threshold' rapid transitions from full to no lake conditions which would imply the rapid transition may have influenced human evolution or the high energy wet conditions or prolonged aridity the same as Model 1, and Model 3 'Extreme variability' with highly variability during the transitions between full to no lake conditions which implies variability influenced human evolution or again the either high energy wet conditions or prolonged aridity. Combined Model has been developed base on the latest evidence from Baringo and suggests lakes appeared rapidly and then were high variable in their extent as they dried up (Wilson, 2011).

precession does not result in smooth forcing, but rather produces rapid, strong forcing periods that are combined with long periods of relatively weak forcing. If this is combined with the idea that many of the East African lakes are amplifier lakes that respond very quickly to a small increase or decrease in the precipitation–evaporation balance then it is relatively easy to envisage threshold responses of the landscape to precessional forcing (Olaka et al., 2010; Trauth et al., 2010; Borchardt and Trauth, 2011; Junginger and Trauth, 2013). In addition Potts (1998, 2013) and deMenocal (2004) also described the potential affects of millennial-scale climate fluctuations which originate in the North Atlantic but have had a profound effect on East African climate in the late Pleistocene (Brown et al., 2007; Foerster et al., 2012) and may have had an influence in the Pliocene and early Pleistocene (Wilson et al., submitted).

Fig. 7 presents four different models of theoretical lake response to local orbital forcing. The first model suggests that there is a relatively smooth and gradual transition between periods with deep lakes and periods without lakes. If this 'smooth' model is correct there may have been prolonged periods of wet or arid

conditions, which may invoke the *red queen hypothesis* or the *turnover pulse hypothesis* as possible causes of evolution. The *red queen hypothesis* suggests that continued adaptation is needed in order for a species to maintain its relative fitness amongst co-evolving systems (Pearson, 2001) and that biotic interactions, rather than climate, are driving evolutionary forces. It is based on the Red Queen's race in Lewis Carroll's *Through the Looking-Glass*, when the Queen says "It takes all the running you can do, to keep in the same place" (see Barnosky, 2001). However for this to occur, a high-energy environment has to exist so that competition rather than resources is the dominant control. At Koobi Fora, there is evidence for multiple hominin species, including *Paranthropus boisei*, *H. erectus* spp., *H. habilis* and *Homo rudolfensis* attributed to the period of maximal lake coverage (~1.8–1.9 Ma), and it may be possible that these hominins were sympatric and in competition with each other. The extreme dry periods would support the *turnover pulse hypothesis* (Vrba, 1995, 2000), with specialist species experiencing a higher extinction and speciation rate while generalists species thrived and expanded. The second model envisages a 'threshold' scenario whereby ephemeral lakes expand and contract

extremely rapidly, producing the very rapid onset of extremely dry conditions required by the *aridity hypothesis* (deMenocal, 1995, 2004). Model 2 however contains prolonged wet and dry periods and thus incorporates Model 1 as well. The third model is an elaboration of the threshold model in which there is 'extreme climate variability' during the rapid transition between deep-lake and no-lake states. Such a model would invoke extreme short-term variability that could drive speciation and extinction events, especially if this climate change occurred over a large geographic region. This would produce the widespread environmental variability as required by the *variability selection hypothesis* of human evolution (Potts, 1998). Model 3 however contains prolonged wet and dry periods and thresholds when finally lakes disappear so includes aspects of both Models 1 and 2.

Rapid stratigraphic transitions from deep lacustrine to fluvial deposition associated with the diatomite deposits from Pliocene lakes in the Baringo Basin suggest that the lakes appear rapidly, remain part of the landscape for thousands of years, then disappear in a highly variable and erratic way (Deino et al., 2006; Wilson, 2011). In fact, the absence of shallow-water (littoral) diatom species at key Plio-Pleistocene lake deposits (Kingston et al., 2007; Wilson, 2011) suggests that the lakes dried up in less than a few hundred years (see Model 4 on Fig. 7), which is consistent with the idea of a bifurcated relationship between climate and lake presence. If these preliminary results are confirmed at other sites in East Africa then the appearance and disappearance of deep-water lakes seems to follow both Model 2 and 3 (see Model 4 on Fig. 7). However, more work is required to understand how the lakes appear and disappear from the landscape if we are to link the environmental changes to specific models of evolution.

The *pulsed climate variability hypothesis* therefore takes the latest palaeoclimate understanding of East Africa and provides a framework within which to understand the causes of early human evolution. Different species or, at the very least, different emerging traits within a species could have evolved through various mechanisms including the *turnover pulse hypothesis*, *aridity hypothesis*, *variability selection hypothesis* or allopatric speciation.

8. Conclusion

Over the last two decades, intense work on African palaeoclimate and tectonics has allowed us to begin to put together a coherent picture of how the environments of eastern and southern Africa have changed over the last ten million years. The landscape of East Africa has been altered dramatically over this period of time. It changed from a relatively flat, homogenous region covered with tropical mixed forest, to a heterogeneous region, with mountains over 4 km high and vegetation ranging from desert to cloud forest. Added to this there were five major climate transitions or events, which impacted African climate: 1) the emergence and expansion of C₄ biomes (~8 Ma), 2) the Messinian Salinity Crisis (6–5.3 Ma), 3) the Intensification of Northern Hemisphere Glaciation (iNHG, 3.2–2.5 Ma), 4) development of the Walker Circulation (DWC, 2.0–1.7 Ma) and, 5) the Early–Middle Pleistocene Transition (EMPT, 1.2–0.8 Ma). The latest palaeoclimate evidence suggests that the presence of ephemeral EARS lakes is concurrent with major events in hominin evolution suggesting that we must embrace a new perspective on how environmental conditions impacted upon human evolution. Palaeoclimate information derived from stacked benthic foraminifera $\delta^{18}\text{O}$ or aeolian dust records has been unable to explain the occurrence of discrete evolutionary phases in the hominin fossil record. However, the understanding of EARS lakes as both a climate indicator and landscape feature provides this missing environmental evidence. The unusual geology and climate of the EARS introduced periods when the local environments in

East Africa were highly variable. This may have driven hominin speciation and also subsequent dispersal events. The *pulsed climate variability hypothesis* should be seen as a framework, which describes the palaeoclimate context within which early human evolution occurred. It does not, however, provide a mechanism through which the evolutionary process occurred and geographic separation, environmental stress, accelerated evolution and extinction of generalist versus specialists, variability selection, and inter-species competition could all have played a role. It should also be remembered that climate may not have always been the underlying cause and that intrinsic social factors may have played a significant role especially with increased encephalisation (Flinn et al., 2005). However, it does seem that an understanding the role of East African palaeoclimates is required to explain why and when hominin species evolved and eventually migrated out of East Africa.

Acknowledgements

We would like to thank Beth Christensen, Annett Junginger, Kit Opie, Robin Dunbar, Craig Feibel, Richard Leakey, Meave Leakey, Rob Foley, Marta Lahr, Mark Thomas and Mark Collard for their comments and support. We would also like to thank the reviewers whose detailed comments greatly improved this paper. We would like to thank the UCL Drawing Office (Department of Geography) for compiling the figures.

References

- Abe-Ouchi, A., Saito, F., Kawamura, K., Raymo, M.E., Okuno, J., Takahashi, K., Blatter, H., 2013. Insolation-driven 100,000-year glacial cycles and hysteresis of ice-sheet volume. *Nature* 500, 190–193.
- Agusti, J., Lordkipanidze, D., 2011. How "African" was the early human dispersal out of Africa? *Quat. Sci. Rev.* 30, 1338–1342.
- Antón, S.C., 2003. Natural history of *Homo erectus*. *Am. J. Phys. Anthropol.* 122, 126–170.
- Antón, S.C., Swisher, C.C., 2004. Early dispersals of Homo from Africa. *Annu. Rev. Anthropol.* 33, 271–296.
- Armitage, S.J., Jasim, S.A., Marks, A.E., Parker, A.G., Usik, V.I., Uerpmann, H.P., 2011. The southern route "Out of Africa": evidence for an early expansion of modern humans into Arabia. *Science* 331, 453–456.
- Ashley, G., Bunn, H., Delaney, J., Barboni, D., Domínguez-Rodrigo, M., Mabulla, A., Gurtov, A., Baluyot, R., Beverly, E., Baquedano, E., 2014. Paleoclimatic and paleoenvironmental framework of FLK North archaeological site, Olduvai Gorge, Tanzania. *Quat. Int.* 322–323, 54–65.
- Bagdasaryan, G.P., Gerasimovskiy, V.I., Polyakov, A.I., Gukasyan, R.K., 1973. Age of volcanic rocks in the rift zones of East Africa. *Geochem. Int.* 10, 66–71.
- Baker, B.H., Mitchell, J.G., Williams, L.A.J., 1988. Stratigraphy, geochronology and volcano-tectonic evolution of the Kedong-Naivasha-Kinangop region, Gregory Rift Valley, Kenya. *J. Geol. Soc. Lond.* 145, 107–116.
- Barboni, D., 2014. Vegetation of Northern Tanzania during the Plio-Pleistocene: a synthesis of the paleobotanical evidences from Laetoli, Olduvai, and Peninj hominin sites. *Quat. Intern.* 322, 264–276.
- Barker, P.A., Talbot, M.R., Street-Perrott, F.A., Marret, F., Scourse, J.D., Odada, E., 2004. Late Quaternary climatic variability in intertropical Africa. In: Battarbee, R.W., Gasse, F., Stickley, C.E. (Eds.), *Past Climate Variability through Europe and Africa. Developments in Paleoenvironmental Research*. Kluwer Academic Publishers, Dordrecht, pp. 117–138.
- Barnosky, A.D., 2001. Distinguishing the effects of the red queen and court jester on Miocene mammal evolution in the northern Rocky Mountains. *J. Vertebr. Paleontol.* 21, 172–185.
- Berger, A., Loutre, M.F., 1991. Insolation values for the climate of the last 10 million years. *Quat. Sci. Rev.* 10, 297–317.
- Berger, W.H., Jansen, E., 1994. Mid-Pleistocene climate shift: the Nansen connection. In: Johannessen, O.M., Muench, R.D., Overland, J.E. (Eds.), *The Polar Oceans and Their Role in Shaping the Global Environment*, AGU Geophys. Monogr., vol. 85, pp. 295–311.
- Berger, A., Loutre, M.F., Mélice, J.L., 2006. Equatorial insolation: from precession harmonics to eccentricity frequencies. *Clim. Past* 2, 131–136.
- Bergner, A.G.N., Strecker, M.R., Trauth, M.H., Deino, A.L., Gasse, F., Blisniuk, P., Dühnforth, M., 2009. Tectonic versus climate influences on the evolution of the lakes in the Central Kenya Rift. *Quat. Sci. Rev.* 28, 2804–2816.
- Bickert, T.A., Haug, G.H., Tiedemann, R., 2004. Late Neogene benthic stable isotope record of Ocean Drilling Program Site 999: Implications for Caribbean paleoceanography, organic carbon burial, and the Messinian Salinity Crisis. *Paleoceanography* 19, 1023. <http://dx.doi.org/10.1029/2002PA000799>.

- Blaauw, M., 2010. Methods and code for 'classical' age-modeling of radiocarbon sequences. *Quat. Geochronol.* 5, 512–518.
- Blisniuk, P., Strecker, M.R., 1990. Asymmetric rift-basin development in the central Kenya Rift. *Terra Abstr.* 2, 51.
- Bobbe, R., Eck, G.G., 2001. Response of African bovids to Pliocene climatic change. *Paleobiology* 27, 1–47. Suppl.
- Bonnefille, R., 1983. Evidence for a cooler and drier climate in the Ethiopian uplands towards 2.5 Myr ago. *Nature* 303, 487–491.
- Bonnefille, R., Mohammed, U., 1994. Pollen-inferred climatic fluctuations in Ethiopia during the last 3000 years. *Palaeogeogr. Palaeoclimatol. Palaeoecol.* 109 (2–4), 331–343.
- Bonnefille, R., 2004. High-resolution vegetation and climate change associated with Pliocene *Australopithecus afarensis*. *Proc. Natl. Acad. Sci. U.S.A.* 101, 12125–12129.
- Bonnefille, R., 2010. Cenozoic vegetation, climate changes and hominid evolution in tropical Africa. *Glob. Planet. Change* 72, 390–411.
- Borchardt, S., Trauth, M.H., 2012. Remotely-sensed evapotranspiration estimates for an improved hydrological modeling of the early Holocene mega-lake Suguta, northern Kenya Rift. *Palaeogeogr. Palaeoclimatol. Palaeoecol.* 361–362, 14–20.
- Brachert, T.C., Bruggmann, G.B., Mertz, D.F., Kullmer, O., Schrenk, F., Jacob, D.E., 2010. Stable isotope variation in tooth enamel from Neogene hippopotamids: monitor of meso and global climate and rift dynamics on the Albertine Rift, Uganda. *Int. J. Earth Sci.* 99 (7), 1663–1675.
- Bramble, D.M., Lieberman, D.E., 2004. Endurance running and the evolution of *Homo*. *Nature* 432, 345–352.
- Brierley, C., Fedorov, A.V., Lui, Z., Herbert, T., Lawrence, K., LaRiviere, J.P., 2010. Greatly expanded tropical warm pool and weakened Hadley circulation in the Early Pliocene. *Science* 323, 1714–1718.
- Brown, F.H., Feibel, C.S., 1991. Stratigraphy, depositional environments and palaeogeography of the Koobi Fora formation. In: Harris, J.M. (Ed.), *Koobi Fora Research Project*, vol. 3. Clarendon, Oxford, pp. 1–30.
- Brown, N.J., Newell, C.A., Stanley, S., Chen, J.E., Perrin, A.J., Kajala, K., Hibberd, J.M., 2011. Independent and parallel recruitment of preexisting mechanisms underlying C4 photosynthesis. *Science* 332, 1436–1439.
- Brown, E.T., Johnson, T.C., Scholz, C.A., Cohen, A.S., King, J.W., 2007. Abrupt change in tropical African climate linked to the bipolar seesaw over the past 55,000 years. *Geophys. Res. Lett.* 34, L20702.
- Bush, M.B., Moreno, E., de Oliveira, P.E., Colinvaux, P.A., 2002. Orbital-forcing signal in sediments of two Amazonian lakes. *J. Paleolimnol.* 27, 341–352.
- Cane, M.A., Molnar, P., 2001. Closing of the Indonesian seaway as a precursor to east African aridification around 3–4 million years ago. *Nature* 411, 157–162.
- Carto, S.L., Weaver, A.J., Hetherington, R., Lam, Y., Wiebe, E.C., 2009. Out of Africa and into an ice age: on the role of global climate change in the late Pleistocene expansion of early modern humans out of Africa. *J. Hum. Evol.* 56, 139–151.
- Castañeda, I.S., Mulitza, S., Schefuß, E., Santos, R.A.L., Damste, J.S.S., Schouten, S., 2009. Wet phases in the Sahara/Sahel region and human expansion patterns in North Africa. *Proc. Natl. Acad. Sci. U.S.A.* 106, 20159–22016.
- Cerling, T.E., 2014. *Stable Isotope Evidence for Hominin Environments in Africa. Treatise on Geochemistry*, second ed. <http://dx.doi.org/10.1016/B978-0-08-095975-7.01213-4>.
- Cerling, T.E., Levin, N.E., Quade, J., Wynn, J.G., Fox, D.L., Kingston, J.D., Klein, R.G., Brown, F.H., 2010. Comment on the paleoenvironment of *Ardipithecus ramidus*. *Science* 328, 1105.
- Clemens, S.C., Prell, W.L., 2003. A 350,000-year summer-monsoon multiproxy stack from the Owen Ridge, Northern Arabian Sea. *Mar. Geol.* 201, 35–51.
- Clemens, S.C., Prell, W.L., 2007. The timing of orbital-scale Indian monsoon changes. *Quat. Sci. Rev.* 26, 275–278.
- Clemens, S.C., Murray, D.V., Prell, W.L., 1996. Nonstationary phase of the Plio-Pleistocene Asian monsoon. *Science* 274, 943–948.
- Clement, A.C., Hall, A., Broccoli, A.J., 2004. The importance of precessional signals in the tropical climate. *Clim. Dyn.* 22, 327–341.
- Collard, M., Wood, B.A., 2007. Defining the genus *Homo*. In: Henke, W., Rothe, H., Tattersall, I. (Eds.), *Handbook of Paleoanthropology*. Springer Berlin, Heidelberg, pp. 1575–1610.
- Couvreur, T.L.P., Chatrou, L.W., Sosef, M.S.M., Richardson, J.E., 2008. Molecular phylogenetics reveal multiple tertiary vicariance origins of African rain forest trees. *BMC Biol.* 6, 54. <http://dx.doi.org/10.1186/1741-7007-6-54>.
- Crossley, R., Knight, R.M., 1981. Volcanism in the western part of the rift valley in southern Kenya. *Bull. Volcanol.* 44, 117–128.
- Crowley, T.J., Hyde, W.T., 2008. Transient nature of late Pleistocene climate variability. *Nature* 456, 226–230.
- Cruz, F.W., Burns, S.J., Karmann, I., Sharp, W.D., Vuille, M., Cardoso, A.O., Ferrari, J.A., Silva Dias, P.L., Viana, O., 2005. Insolation-driven changes in atmospheric circulation over the past 116,000 years in subtropical Brazil. *Nature* 434, 63–66.
- DeConto, R.M., Pollard, D., Wilson, P.A., Pälike, H., Lear, C.H., Paganì, M., 2008. Thresholds for Cenozoic bipolar glaciation. *Nature* 455, 652–656.
- Deino, A.L., Kingston, J.D., Glen, J.M., Edgar, R.K., Hill, A., 2006. Precessional forcing of lacustrine sedimentation in the late Cenozoic Chemeron Basin, Central Kenya Rift, and calibration of the Gauss/Matuyama boundary. *Earth Planet. Sci. Lett.* 247, 41–60.
- Denison, S., Maslin, M.A., Boot, C., Pancost, R., Ettwein, V.E., 2005. Precession-forced changes in South West African vegetation during marine oxygen isotope stages 100 and 101. *Palaeogeogr. Palaeoclimatol. Palaeoecol.* 220, 375–386.
- deMenocal, P., 1995. Plio-Pleistocene African climate. *Science* 270, 53–59.
- deMenocal, P., 2004. African climate change and faunal evolution during the Pliocene-Pleistocene. *Earth Planet. Sci. Lett.* 220, 3–24.
- Donges, J.F., Donner, R.V., Trauth, M.H., Marwan, N., Schellnhuber, H.-J., 2011. Nonlinear detection of paleoclimate-variability transitions possibly related to human evolution. *Proc. Natl. Acad. Sci.* 108, 20422–20427.
- Dunkley, P.M., Smith, M., Allen, D.J., Darling, W.G., 1993. *The Geothermal Activity and Geology of the Northern Sector of the Kenya Rift Valley*. NERC Report.
- Ebinger, C.J., Yemane, T., Harding, D.J., Tesfaye, D., Kelley, S., Rex, D.C., 2000. Rift deflection, migration, and propagation: linkage of the Ethiopian and Eastern rifts, Africa. *Geol. Soc. Am. Bull.* 112, 163–176.
- Edwards, E.J., Osborne, C.P., Strömberg, C.A.E., Smith, S.A., C4 Grasses Consortium, 2010. The origins of C4 grasslands: integrating evolutionary and ecosystem science. *Science* 331, 587–591.
- Elenga, H., Schwartz, D., Vincens, A., 1994. Pollen evidence of late Quaternary vegetation and inferred climate changes in Congo. *Palaeogeogr. Palaeoclimatol. Palaeoecol.* 109, 345–356.
- Einarsson, T., Hopkins, D.M., Doell, R.R., 1967. The stratigraphy of Tjornes, northern Iceland, and the history of the Bering Land Bridge. In: Hopkins, D.M. (Ed.), *The Bering Land Bridge*. Stanford University Press, California, pp. 312–325.
- Faith, J.T., Behrensmeier, A.K., 2013. Climate change and faunal turnover: testing the mechanics of the turnover-pulse hypothesis with South African fossil data. *Paleobiology* 39, 609–627.
- Feakins, S.J., deMenocal, P.B., Eglinton, T.I., 2005. Biomarker records of late Neogene changes in northeast African vegetation. *Geology* 33, 977–980.
- Feakins, S.J., Levin, N.E., Liddy, H.M., Sieracki, A., Eglinton, T.I., Bonnefille, R., 2013. Northeast African vegetation change over 12 m.y. *Geology* 41, 295–298.
- Fedorov, A.V., Brierley, C., Lawrence, K.T., Liu, Z., Dekens, P.S., Ravelo, A.C., 2013. Patterns and mechanisms of early Pliocene warmth. *Nature* 496, 43–49.
- Feibel, C.S., 2011. Geological history of the Turkana Basin. *Evol. Anthropol. Issues News Rev.* 20, 206–216.
- Ficken, K.J., Wooller, M.J., Swain, D.L., Street-Perrott, F.A., Eglinton, G., 2002. Reconstruction of a subalpine grass-dominated ecosystem, Lake Rutundu, Mount Kenya: a novel multi-proxy approach. *Palaeogeogr. Palaeoclimatol. Palaeoecol.* 177, 137–149.
- Flinn, M.V., Geary, D.C., Ward, C.V., 2005. Ecological dominance, social competition, and coalitionary arms races: why humans evolved extraordinary intelligence. *Evol. Hum. Behav.* 26, 10–46.
- Foerster, V., Junginger, A., Langkamp, O., Gebru, T., Asrat, A., Umer, M., Lamb, H., Wennrich, V., Rethemeyer, J., Nowaczyk, N., Trauth, M.H., Schäbitz, F., 2012. Climatic change recorded in the sediments of the Chew Bahir basin, southern Ethiopia, during the last 45,000 yrs. *Quat. Int.* 274, 25–37.
- Foster, A., Ebinger, C., Mbete, E., Rex, D., 1997. Tectonic development of the northern Tanzanian sector of the East African rift system. *J. Geol. Soc.* 154, 689–700.
- Forster, A., Gleadon, J.W., 1996. Structural framework and denudation history of the flanks of the Kenya and Anza Rifts, East Africa. *Tectonics* 15, 258–271.
- Garcin, Y., Junginger, A., Melnick, D., Olago, D.O., Strecker, M.R., Trauth, M.H., 2009. Late Pleistocene-Holocene rise and collapse of the Lake Suguta, northern Kenya rift. *Quat. Sci. Rev.* 28, 911–925.
- Gasse, F., 2000. Hydrological changes in the African tropics since the Last Glacial Maximum. *Quat. Sci. Rev.* 19, 189–211.
- George, R.M.M., Rogers, N.W., Kelley, S., 1998. Earliest magmatism in Ethiopia: evidence for two mantle plumes in one flood basalt province. *Geology* 26, 923–926.
- Green, D.J., Gordon, A.D., Richmond, B.G., 1997. Limb-size proportions in *Australopithecus afarensis* and *Australopithecus africanus*. *J. Hum. Evol.* 52, 187–200.
- Grove, M., 2011a. Change and variability in Plio-Pleistocene climates: modelling the hominin response. *J. Archaeol. Sci.* 38, 3038–3047.
- Grove, M., 2011b. Speciation, diversity, and mode 1 technologies: the impact of variability selection. *J. Hum. Evol.* 61, 306–319.
- Guy, F., Lieberman, D.E., Pilbeam, D., de León, M.P., Likies, A., Mackaye, H.T., Brunet, M., 2005. Morphological affinities of the *Sahelanthropus tchadensis* (Late Miocene hominid from Chad) cranium. *Proc. Natl. Acad. Sci.* 102, 18836–18841.
- Haile-Selassie, Y., Suwa, G., White, T.D., 2004. Late Miocene teeth from Middle Awash, Ethiopia, and early hominid dental evolution. *Science* 303, 1503–1505.
- Harris, J.M., Cerling, T.E., Leakey, M.G., Passey, B.H., 2008. Stable isotope ecology of fossil hippopotamids from the Lake Turkana Basin of East Africa. *J. Zool.* 275, 323–331.
- Haug, G.H., Tiedemann, R., 1998. Effect of the formation of the Isthmus of Panama on Atlantic Ocean thermohaline circulation. *Nature* 393, 673–675.
- Head, M.J., Pillans, B., Farquhar, S.A., 2008. The Early–Middle Pleistocene Transition: characterization and proposed guide for the defining boundary. *Episodes* 31 (2).
- Hopf, F.A., Valone, T.J., Brown, J.H., 1993. Competition theory and the structure of ecological communities. *Ecol. Monogr.* 63, 142–154.
- Hopley, P.J., Maslin, M.A., 2010. Climate-averaging of terrestrial faunas – an example from the Plio-Pleistocene of South Africa. *Paleobiology* 36, 32–50.
- Hopley, P.J., Marshall, J.D., Weedon, G.P., Latham, A.G., Herries, J.L.R., Kuykendall, K.L., 2007. Orbital forcing and the spread of C4 grasses in the late Neogene: stable isotope evidence from South African speleothems. *J. Hum. Evol.* 53, 620–634.
- Huang, Y., Freeman, K.H., Eglinton, T.I., Street-Perrott, F.A., 1999. $\delta^{13}\text{C}$ analyses of individual lignin phenols in Quaternary lake sediments: a novel proxy for deciphering past terrestrial vegetation changes. *Geology* 27, 471–474.

- Imbrie, J., Boyle, E., Clemens, S., Duffy, A., Howard, W., Kukla, G., Kutzbach, J., Martinson, D., McIntyre, A., Mix, A., Molino, B., Morley, J., Peterson, L., Pisias, N., Prell, W., Raymo, M., Shackleton, N., Toggweiler, J., 1992. On the structure and origin of major glaciation cycles. 1. Linear responses to Milankovitch forcing. *Paleoceanography* 7, 701–738.
- Junginger, A., Trauth, M.H., 2013. Hydrological constraints of paleo-Lake Suguta in the northern Kenya rift during the African humid period (15–5 ka BP). *Glob. Planet. Change* 111, 174–188.
- Junginger, A., Roller, S., Olaka, L., Trauth, M.H., 2014. The effect of solar irradiation changes on water levels in the paleo-Lake Suguta, Northern Kenya Rift, during the late Pleistocene African Humid Period (15–5 ka BP). *Palaeogeogr. Palaeoclimatol. Palaeoecol.* 396, 1–16.
- Joordens, J.C.A., Vonhof, H.B., Feibel, C.S., Lourens, L.J., Dupont-Nivet, G., van der Lubbe, J.H.J.L., Sier, M.J., Davies, G.R., Kroon, D., 2011. An astronomically-tuned climate framework for hominins in the Turkana Basin. *Earth Planet. Sci. Lett.* 307, 1–8.
- Keigwin, L.D., 1978. Pliocene closing of the Isthmus of Panama, based on biostratigraphic evidence from nearby Pacific Ocean and Caribbean cores. *Geology* 6, 630–634.
- Keigwin, L.D., 1982. Pliocene paleoceanography of the Caribbean and east Pacific: role of panama uplift in late Neogene times. *Science* 217, 350–353.
- Keller, G., Zenker, C.E., Stone, S.M., 1989. Late neogene history of the pacific-caribbean gateway. *J. S. Am. Earth Sci.* 2, 73–108.
- Kingston, J.D., Marino, B.D., Hill, A., 1994. Isotopic evidence for Neogene hominid paleoenvironments in the Kenya Rift Valley. *Science* 274, 955–959.
- Kingston, J.D., 2007. Shifting adaptive landscapes: progress and challenges in reconstructing early hominid environments. *Am. J. Phys. Anthropol. Suppl. Yearb. Phys. Anthropol.* 134 (Issue Suppl. 45), 20–58.
- Kingston, J.D., Deino, A.L., Edgar, R.K., Hill, A., 2007. Astronomically forced climate change in the Kenyan rift valley 2.7–2.55 Ma: implications for the evolution of early hominid ecosystems. *J. Hum. Evol.* 53, 487–503.
- Krijgsman, W., Langereis, C.G., Zachariasse, W.J., Boccaletti, M., Moratti, G., Gelati, R., Iaccarino, S., Papani, G., Villa, G., 1999. Late Neogene evolution of the Taza–Guerçif Basin (Rifian Corridor, Morocco) and implications for the messinian salinity crisis. *Mar. Geol.* 153, 147–160.
- Larrasoana, J.C., Roberts, A.P., Rohling, E.J., Winkhofer, M., Wehausen, R., 2003. Three million years of monsoon variability over the northern Sahara. *Clim. Dyn.* 21, 689–698.
- Leakey, M.G., Feibel, C.S., McDougall, I., Walker, A., 1995. New four-million-year-old hominid species from Kanapoi and Allia Bay, Kenya. *Nature* 376, 565–571.
- Lee-Thorp, J.A., Sponheimer, M., Luyt, J., 2007. Tracking changing environments using stable carbon isotopes in fossil tooth enamel: an example from the South African hominid sites. *J. Hum. Evol.* 53, 595–601.
- Lepre, C.J., Quinn, R.L., Joordens, J.C.A., Swisher III, C.C., Feibel, C.S., 2007. Plio-Pleistocene facies environments from the KBS Member, Koobi Fora Formation: implications for climate controls on the development of lake-margin hominid habitats in the northeast Turkana basin (northwest Kenya). *J. Hum. Evol.* 53, 504–514.
- Levin, N.E., 2013. Compilation of East African soil carbonate stable isotope data. *Integr. Earth Data Appl.* <http://dx.doi.org/10.1594/IEDA/100231>.
- Levin, N.E., Quade, J., Simpson, S.W., Semaw, S., Rogers, M., 2004. Isotopic evidence for Plio-Pleistocene environmental change at Gona, Ethiopia. *Earth Planet. Sci. Lett.* 219, 93–110.
- Lezine, A., 1991. West African paleoclimates during the last climatic cycle inferred from an Atlantic deep-sea pollen record. *Quat. Res.* 35, 456–463.
- Li, X.-S., Berger, A., Loutre, M.F., Maslin, M.A., Haug, G.H., Tiedemann, R., 1998. Simulating Late Pliocene northern hemisphere climate with the LLN 2-D model. *Geophys. Res. Lett.* 25, 915–918.
- Lisiecki, L.E., Raymo, M.E., 2005. A Pliocene-Pleistocene stack of 57 globally distributed benthic $\delta^{18}\text{O}$ records. *Paleoceanography* 20, PA1003. <http://dx.doi.org/10.1029/2004pa001071>.
- Liu, Z., Altabet, M.A., Herbert, T.D., 2008. Plio-Pleistocene denitrification in the eastern tropical North Pacific: Intensification at 2.1 Ma. *Geochem. Geophys. Geosyst.* 9 (11) <http://dx.doi.org/10.1029/2008GC002044>.
- Lordkipanidze, D., Ponce de León, M.S., Margvelashvili, A., Rak, Y., Rightmire, G.P., Vekua, A., Zollikofer, C.P.E., 2013. A complete skull from Dmanisi, Georgia, and the evolutionary biology of early *Homo*. *Science* 342, 326–331.
- Lourens, L., Hilgen, F., Shackleton, N.J., Laskar, J., Wilson, D., 2004. The Neogene Period. In: Gradstein, F., Ogg, J.G., Smith, G. (Eds.), *A Geologic Time Scale*. Cambridge University Press, pp. 409–440.
- Lowe, J.J., Walker, M.J.C., 1984. *Reconstructing Quaternary Environments*. Prentice-Hall, Longman, NY.
- Magill, C.R., Ashley, G.M., Freeman, K., 2013. Ecosystem variability and early human habitats in eastern Africa. *Proc. Natl. Acad. Sci.* 110, 1167–1174.
- Malmgren, B.A., Berggren, W.A., Lohmann, G.P., 1983. Evidence for punctuated gradualism in the late Neogene Globorotalia tumida lineage of planktonic foraminifera. *GeoSci. World* 9 (3), 377–389.
- Mann, P., Corrigan, J., 1990. Model for late Neogene deformation in Panama. *Geology* 18, 558–562.
- Maslin, M.A., Christensen, B., 2007. Tectonics, orbital forcing, global climate change, and human evolution in Africa. *J. Hum. Evol.* 53, 443–464.
- Maslin, M.A., Ridgwell, A., 2005. Mid-Pleistocene Revolution and the Eccentricity Myth. In: *Special Publication of the Geological Society of London*, vol. 247, pp. 19–34.
- Maslin, M.A., Trauth, M.H., 2009. Plio-pleistocene East African pulsed climate variability and its influence on early human evolution. In: Grine, F.E., Leakey, R.E., Fleagle, J.G. (Eds.), *The First Humans—Origins of the Genus Homo*. Springer Science, pp. 159–171.
- Roach, N.T., Venkadesan, N., Rainbow, M., Lieberman, D.E., 2013. Elastic energy storage in the shoulder and the evolution of high-speed throwing in *Homo*. *Nature* 498, 483–487.
- Roveri, M., Lugli, S., Manzi, V., Schreiber, B.C., 2008. The Messinian Sicilian stratigraphy revisited: new insights for the Messinian salinity crisis. *Terra Nova* 20, 483–488.
- Ruddiman, W.F., Raymo, M.E., 1988. Northern Hemisphere climate regimes during the past 3 Ma: possible tectonic connections. *Philos. Trans. R. Soc. Lond. B* 318, 411–430.
- Leakey, R.E., Fleagle, J.G. (Eds.), *The First Humans—Origins of the Genus Homo*. Springer Science, pp. 151–158.
- Maslin, M.A., Li, X.S., Loutre, M.F., Berger, A., 1998. The contribution of orbital forcing to the progressive intensification of Northern Hemisphere glaciation. *Quat. Sci. Rev.* 17, 411–426.
- Maslin, M.A., Seidov, D., Lowe, J., 2001. Synthesis of the nature and causes of sudden climate transitions during the Quaternary. In: Seidov, D., Haupt, B.J., Maslin, M.A. (Eds.), *The Oceans and Rapid Climate Change: Past, Present and Future*. Am. Geophys. Union Geophys. Monogr. Series 126. AGU, Washington, DC, pp. 9–52.
- Maslin, M.A., Mahli, Y., Phillips, O., Cowling, S., 2005. New views on an old forest: assessing the longevity, resilience and future of the Amazon Rainforest. *Trans. Inst. Br. Geogr.* 30, 390–401.
- Maslin, M.A., Pancost, R., Wilson, K.E., Lewis, J., Trauth, M.H., 2012. Three and half million year history of moisture availability of South West Africa: evidence from ODP site 1085 biomarker records. *Palaeogeogr. Palaeoclimatol. Palaeoecol.* 317–318, 41–47.
- McClymont, E.L., Rosell-Melé, A., 2005. Links between the onset of modern walker circulation and the mid-pleistocene climate transition. *Geology* 33, 389–392.
- McDougall, I., Watkins, R.T., 1988. Potassium-Argon ages of volcanic rocks from northeast of Lake Turkana, northern Kenya. *Geol. Mag.* 125, 15–23.
- McDougall, I., Brown, F.H., Vasconcelos, P.M., Cohen, B., Thiede, D., Buchanan, M., 2012. New single crystal $^{40}\text{Ar}/^{39}\text{Ar}$ ages improve time scale for deposition of the Omo Group, Omo–Turkana Basin, East Africa. *J. Geol. Soc. Lond.* 169, 213–226.
- Mudelsee, M., Stattegger, K., 1997. Exploring the structure of the mid-Pleistocene revolution with advance methods of time-series analysis. *Geol. Rundsch* 86, 499–511.
- Murphy, L.N., Kirk-Davidoff, D.B., Mahowald, N., Otto-Bliesner, B.L., 2009. A numerical study of the climate response to lowered Mediterranean Sea level during the Messinian Salinity Crisis. *Palaeogeogr. Palaeoclimatol. Palaeoecol.* 279, 41–59.
- Olaka, L.A., Odada, E.O., Trauth, M.H., Olago, D.O., 2010. The sensitivity of East African rift lakes to climate fluctuations. *J. Paleolimnol.* 44, 629–644.
- Owen, R.B., Potts, R., Behrensmeier, A.K., Ditchfield, P., 2008. Diatomaceous sediments and environmental change in the Pleistocene Ologesailie Formation, southern Kenya Rift Valley. *Palaeogeogr. Palaeoclimatol. Palaeoecol.* 269, 17–37.
- Owen, R.B., Potts, R., Behrensmeier, A.K., 2009. Reply to the comment on “Diatomaceous sediments and environmental change in the Pleistocene Ologesailie Formation, southern Kenya Rift Valley” by R.B. Owen, R. Potts, A.K. Behrensmeier and P. Ditchfield. *Palaeogeogr. Palaeoclimatol. Palaeoecol.* 282, 147–148.
- Partridge, T.C., 1993. Warming Phases in Southern Africa during the last 150,000 years: an overview. *Paleogeogr. Palaeoclimatol. Paleocool.* 101, 237–244.
- Partridge, T.C., deMenocal, P.B., Lorentz, S.A., Paikers, M.J., Vogel, J.C., 1997. *Quat. Sci. Rev.* 16, 1125–1133.
- Pik, R., Marty, B., Carignan, J., Yirgu, G., Ayalew, T., 2008. Timing of east african rift development in southern Ethiopia: implication for mantle plume activity and evolution of topography. *Geology* 36, 167–170.
- Pearson, P.N., 2001. Red Queen Hypothesis. *Encyclopedia of Life Sciences*. <http://www.els.net>.
- Prömmel, K., Cubasch, U., Kasper, F., 2013. A regional climate model study of the impact of tectonic and orbital forcing on African precipitation and vegetation. *Palaeogeogr. Palaeoclimatol. Palaeoecol.* 369, 154–162.
- Potts, R., 1996. Evolution and climatic variability. *Science* 273, 922–923.
- Potts, R., 1998. Environmental hypothesis of hominid evolution. *Yearb. Phys. Anthropol.* 41, 93–136.
- Potts, R., 2013. Hominid evolution in settings of strong environmental variability. *Quat. Sci. Rev.* 73, 1–13.
- Prell, W.L., 1984. Covariance patterns of foraminifera $\delta^{18}\text{O}$: an evaluation of Pliocene ice-volume changes near 3.2 million years ago. *Science* 226, 692–694.
- Ravelo, C., Andreasen, D., Lyle, M., Lyle, A.O., Wara, M.W., 2004. Regional climate shifts caused by gradual global cooling in the Pliocene epoch. *Nature* 429, 263–267.
- Raymo, M.E., 1991. Geochemical evidence supporting T.C. Chamberlin’s theory of glaciation. *Geology* 19, 344–347.
- Raymo, M.E., 1994. The initiation of Northern Hemisphere glaciation. *Annu. Rev. Earth Planet. Sci.* 22, 353–383.
- Reed, K.E., 1997. Early hominid evolution and ecological change through the African Plio-Pleistocene. *J. Hum. Evol.* 32, 289–322.
- Reed, K.E., Fish, J.L., 2005. Tropical and Temperate seasonal influences on human evolution. In: Brockman, D., van Schaik, C. (Eds.), *Seasonality in Primates*. Cambridge University Press, Cambridge, pp. 491–520.
- Reed, K.E., Russak, S.M., 2009. Tracking ecological change in relation to the emergence of homo near the plio-pleistocene boundary. In: Grine, F.E., Leakey, R.E., Fleagle, J.G. (Eds.), *The First Humans—Origins of the Genus Homo*. Springer Science, pp. 159–171.

- Saji, N.H., Goswami, B.N., Vinayachandran, P.N., Yamagata, T., 1999. A dipole mode in the tropical Indian Ocean. *Nature* 401, 360–363.
- Scheffé, E., Schouten, S., Schneider, R.R., 2005. Central African hydrologic changes during the past 20,000 years. *Nature* 437, 1003–1006.
- Scholz, C.A., Cohen, A.S., Johnson, T.C., 2011. Southern hemisphere tropical climate over the past 145 ka: results of the Lake Malawi Scientific Drilling Project, East Africa. *Palaeogeogr. Palaeoclimatol. Palaeoecol.* 303, 1–2.
- Scott, L., 1999. Vegetation history and climate in the Savanna biome South Africa since 190,000 ka: a comparison of pollen data from the Tswaing Crater (the Pretoria Saltpan) and Wonderkrater. *Quat. Int.* 57–58, 215–223.
- Ségalen, L., Lee-Thorp, J.A., Cerling, T., 2007. Timing of C4 grass expansion across sub-Saharan Africa. *J. Hum. Evol.* 53, 549–559.
- Senut, B., Pickford, M., Gommery, D., Mein, P., Cheboi, K., Coppens, Y., 2001. First hominid from the Miocene (Lukeino formation, Kenya). *Earth Planet. Sci. Lett.* 332, 137–144.
- Sepulchre, P., Ramstein, G., Fluteau, F., Schuster, M., 2006. Tectonic uplift and Eastern Africa aridification. *Science* 313, 1419–1423.
- Schneck, R., Micheels, A., Mosbrugger, V., 2010. Climate modelling sensitivity experiments for the Messinian salinity crisis. *Palaeogeogr. Palaeoclimatol. Palaeoecol.* 286, 149–163.
- Shackleton, N.J., Imbrie, J., Pisias, N.G., 1988. The evolution of oceanic oxygen-isotope variability in the North Atlantic over the past 3 million years. *Philos. Trans. R. Soc. Lond. B* 318, 679–686.
- Shultz, S., Maslin, M.A., 2013. Early human speciation, brain expansion and dispersal influenced by African climate pulses. *PLoS ONE* 8 (10), e76750.
- Shultz, S., Nelson, E., Dunbar, R.I.M., 2012. Hominin cognitive evolution: identifying patterns and processes in the fossil and archaeological record. *Philos. Trans. R. Soc. B: Biol. Sci.* 367, 2130–2140.
- Sommerfeld, A., Prömmel, K., Cubasch, U., 2014. The East African Rift System and the impact of orographic changes on regional climate and resulting aridification. *Int. J. Earth Sci.* (in press).
- Spiegel, C., Kohn, B.P., Belton, D.X., Gleadow, A.J.W., 2007. Morphotectonic evolution of the Central Kenya rift flanks: implications for late Cenozoic environmental change in east Africa. *Geology* 35, 427–430.
- Stern Jr., J.T., Susman, R.L., 1983. The locomotor anatomy of *Australopithecus afarensis*. *Am. J. Phys. Anthropol.* 60, 279–317.
- Strecker, M.R., Blisniuk, P.M., Eisbacher, G.H., 1990. Rotation of extension direction in the central Kenya Rift. *Geology* 18, 299–302.
- Teaford, M.F., Ungar, P.S., 2000. Diet and the evolution of the earliest human ancestors. *Proc. Natl. Acad. Sci.* 97, 13506–13511.
- Tiedemann, R., Sarnthein, M., Stein, R., 1989. Climatic changes in the western Sahara: Aeolo-marine sediment record of the last 8 million years. *Proc. Ocean Drill. Progr. Sci. Results* 108, 241–278.
- Tiedemann, R., Sarnthein, M., Shackleton, N.J., 1994. Astronomic timescale for the Pliocene Atlantic $\delta^{18}\text{O}$ and dust flux records of ODP Site 659. *Paleoceanography* 9, 619–638.
- Tiercelin, J.J., Lezzar, K.E., 2002. A 300 million year history of rift lakes in Central and East Africa: an updated broad review. In: Odada, E.O., Olago, D.O. (Eds.), *The East African Great Lakes: Limnology, Paleolimnology and Biodiversity*. Kluwer Academic Publishers, Dordrecht, Netherlands, pp. 3–60.
- Tierney, J.E., Russell, J.M., Huang, Y., Sinninghe Damsté, J.S., Hopmans, E.C., Cohen, A.S., 2008. Northern hemisphere controls on tropical southeast African climate during the past 60,000 years. *Science* 322, 252–255.
- Tipple, B.J., Pagani, M., 2007. The early origins of C4 photosynthesis. *Annu. Rev. Earth Planet. Sci.* 35, 435–461.
- Trauth, M.H., 2014. A new probabilistic technique to build an age model for complex stratigraphic sequences. *Quat. Geochronol.* 22, 65–71.
- Trauth, M.H., Deino, A.L., Bergner, A.G.N., Strecker, M.R., 2003. East African climate change and orbital forcing during the last 175 kyr BP. *Earth Planet. Sci. Lett.* 206, 297–313.
- Trauth, M.H., Maslin, M.A., Deino, A., Strecker, M.R., 2005. Late Cenozoic moisture history of east Africa. *Science* 309, 2051–2053.
- Trauth, M.H., Maslin, M.A., Deino, A.L., Bergner, M.L., Strecker, M.R., Bergner, A.G.N., Dühnforth, M., 2007. High- and low-latitude controls and East African forcing of Plio-Pleistocene East African climate and early human evolution. *J. Hum. Evol.* 53, 475–486.
- Trauth, M.H., Larrasoana, J.C., Mudelsee, M., 2009. Trends, rhythms and events in Plio-Pleistocene African climate. *Quat. Sci. Rev.* 28, 399–411.
- Trauth, M.H., Maslin, M.A., Bergner, A.G.N., Deino, A.L., Junginger, A., Odada, E., Olago, D.O., Olaka, L., Strecker, M.R., 2010. Human evolution and migration in a variable environment: the amplifier lakes of east Africa. *Quat. Sci. Rev.* 29, 2981–2988.
- Underwood, C.J., King, C., Steurbaut, E., 2013. Eocene initiation of Nile Drainage due to East African uplift. *Palaeogeogr. Palaeoclimatol. Palaeoecol.* 392, 138–145.
- Verschuren, D., Sinninghe Damsté, J.S., Moernaut, J., Kristen, I., Blaauw, M., Fagot, M., Haug, G.H., CHALLACEA Project Members, 2009. Half-precessional dynamics of monsoon rainfall near the East African equator. *Nature* 462, 637–641.
- Verardo, D.J., Ruddiman, W.F., 1996. Late Pleistocene charcoal in tropical Atlantic deep-sea sediments: climatic and geochemical significance. *Geology* 24, 855–857.
- Vrba, E.S., 1985. Environment and evolution: alternative causes of the temporal distribution of evolutionary events. *S. Afr. J. Sci.* 81, 229–236.
- Vrba, E.S., 1988. Late Pliocene climatic events and hominid evolution. In: Grine, F. (Ed.), *Evolutionary History of the “Robust” Australopithecines*. De Gruyter, pp. 405–426.
- Vrba, E.S., 1995. The fossil record of African antelopes (Mammalia, Bovidae) in relation to human evolution and paleoclimate. In: Vrba, E.S., Denton, G., Burckle, L., Partridge, T. (Eds.), *Paleoclimate and Evolution with Emphasis on Human Origins*. Yale University Press, New Haven, pp. 385–424.
- Vrba, E.S., 2000. Major features of Neogene mammalian evolution in Africa. In: Partridge, T.C., Maud, R.R. (Eds.), *The Cenozoic of Southern Africa*. Oxford University Press, New York, pp. 277–304.
- Wang, X., Edwards, R.L., Cheng, H., Shen, C.C., 2004. Wet periods in northeastern Brazil over the past 210 kyr linked to distant climate anomalies. *Nature* 432, 740–743.
- White, T.D., Asfaw, B., Beyene, Y., Haile-Selassie, Y., Lovejoy, C.O., Suwa, G., WoldeGabriel, G., 2009. *Ardipithecus ramidus* and the paleobiology of early hominids. *Science* 314, 75–86.
- Wichura, H., Bousquet, R., Oberhänsli, R., Strecker, M.R., Trauth, M.H., 2010. Evidence for mid-Miocene uplift of the east African plateau. *Geology* 38, 543–546.
- Williams, M.A.J., Williams, F.M., Gasse, F., Curtis, G.H., Adamson, D.A., 1979. Pliocene-Pleistocene environments at Gadeb prehistoric site, Ethiopia. *Nature* 282, 29–33.
- Williams, L.A.J., Macdonald, R., Leat, P.T., 1983. In: *Proceedings of Regional Seminar on Geothermal Energy in Eastern and Southern Africa*. UNESCO/USAID, Nairobi, pp. 61–67.
- Wilson, K.E., 2011. *Plio-Pleistocene Reconstruction of East African and Arabian Sea Palaeoclimate* (PhD thesis). University College London.
- Wright, J.D., Miller, K.G., 1996. Control of North Atlantic deep water circulation by the Greenland-Scotland Ridge. *Paleoceanography* 11, 157–170.
- Wood, B., 2002. Palaeoanthropology: hominid revelations from Chad. *Nature* 418, 133–135.
- Wood, B., Strait, D., 2004. Patterns of resource use in early Homo and Paranthropus. *J. Hum. Evol.* 46, 119–162.
- Wood, B., 2014. Fifty years after *Homo habilis*. *Nature* 508, 31–33.
- Wynn, J.G., 2004. Influence of Plio-pleistocene aridification on human evolution: evidence from paleosols of the Turkana Basin, Kenya. *Am. J. Phys. Anthropol.* 123, 106–118.
- Ziegler, M., Tuenter, E., Lourens, L.J., 2010. The precession phase of the boreal summer monsoon as viewed from the eastern Mediterranean (ODP Site 968). *Quat. Sci. Rev.* 29, 1481–1490.