

Sitting and Low Back Disorders: An Overview of the Most Commonly Suggested Harmful Mechanisms

Kaja Kastelic¹, Žiga Kozinc², Nejc Šarabon³

¹Department of Health, Andrej Marusic Institute Research, University of Primorska, Koper, Slovenia

²Cycling Science Ltd., Kranj, Slovenia

³Univerza na Primorskem, Fakulteta za vede o zdravju, Izola, Slovenia

ABSTRACT

Prolonged sitting is widely accepted as a risk factor for development and/or persistence of low back pain (LBP), with several etiological mechanisms being proposed so far. Cumulative intervertebral disc injuries were often mentioned in relation to LBP and sitting in older literature. Recent studies more frequently report on posterior lumbo-pelvic ligaments as the origin of pain, as those are under a tensile load when the spine is flexed. Such load can lead to (micro)trauma and changes in sensory-motor function, which increases the risk for overuse injuries of certain structures and even acute trauma. Overuse of facet joints or sacroiliac joint were not investigated to such extent. Another potential origin of LBP, noted also in several textbooks, are the myofascial trigger points. Prolonged sitting is associated with reduction in hip flexors flexibility, which induces unfavorable strain to lumbo-pelvic area and consequently increases the injury risk in lower back area.

Key words: lower back pain, intervertebral discs, ligaments, back stability, ergonomics

Introduction

Pain in lumbar and/or sacral spine and adjacent tissues, often referred to as low back pain (LBP) is the most common musculoskeletal symptom in general population nowadays. Up to 84% people suffer from at least one case of LBP in their lifetime¹. In half of those, the pain starts to recur or becomes chronic². LBP is usually not a life-threatening situation, however, it may have a significant impact on individual's life quality and represents a major socioeconomic problem. The costs related to LBP are estimated to be between 0.8 and 2.1% of gross domestic product in developed countries³, with treatments representing only about one fifth of the total costs^{4,5}. The remaining is attributed to indirect costs, arising from decreased work efficiency, sick-leaves and early retirements⁶. Even though only about 50% of the people suffering from LBP actually seeks medical care⁷, LBP is among the most frequently treated conditions⁸.

Up to date, several biomechanical, social and psychological risk factors for sustaining LBP have been recognized. In individual cases, it is usually impossible to determine the exact factors and mechanisms that led to the occurrence of pain. Even with the modern imaging technology, an anatomical origin of pain is not found in 85% of LBP cases^{9,10}. It is believed that muscles, ligaments and

fascia are the source of idiopathic/non-specific LBP¹¹. In general, the origin of pain may be in any type of tissue.

People are exposed to several different risk factors for LBP throughout their lifetime. Prolonged sitting is among the biomechanical risk factors that a big proportion of population is exposed to. Sedentary time for average individual has been reported to be between 55 and 60% of awake time¹²⁻¹⁴, which equals to almost 10 hours per day. For many, sitting is the most adopted posture throughout the day. Recent technological advance is among the most indisputable reasons behind that, as it led to more and more workplaces which demand the employee to be seated. Another culprit for increased daily sitting time is passive motorized transport, while frequent usage of television, computer and other digital information/entertainment technology led to more sitting during leisure time. It is common to sit at culture and sport events, meetings and waiting rooms in different facilities as well. It seems that modern society has created working and living environment that encourages sitting on almost every step.

Spinal structures are exposed to relatively low loads during sitting, but these become highly unfavorable when the exposure is prolonged – the resistance of the tissues to

imposed loads is reduced through time, if the exposure is not interrupted¹⁵. To maintain optimal health and function, tissues require a combination of different, mostly dynamic loads. However, static loads are present for the most time during sitting, and are not optimally distributed between and within structures and tissues¹⁶. The strain that tissues are exposed to is highly dependent on the sitting posture and morphological characteristics of individual's structures¹⁷.

It has been suggested that long-lasting mechanical loads of otherwise healthy tissues can elicit different symptoms (pain among others), which appear only after prolonged uninterrupted static posture and are relieved when the position is changed¹⁸. Most so called postural syndrome are in the lumbar spine and associated with prolonged sitting. Since the symptoms are transient in nature, this syndrome has not been given much attention by the healthcare professionals, although some authors stressed out that it may be a precursor for more severe issues in the future¹⁹.

To form ergonomic recommendations for sedentary people, it is crucial to know and understand the positions of anatomical structures, muscle activity and passive tissue loadings during different types of sitting. To our knowledge, there is no prominent authoritative organization that would publish detailed recommendations on ergonomics of sitting. Recommendations between individual authors or textbooks often differ substantially and are most commonly not equipped with scientific findings on which they are based on. Additional confusion is caused by numerous chairs and other sitting-related accessories available on market, which are often designed based on false or out-of-the-context conclusions, but are promoted to have ergonomic characteristics.

Unfortunately, such false claims are more likely to reach people than appropriate guidelines, supported by science. This contributes to spreading of poor or even completely false knowledge and understanding on ergonomics of sitting. Providing people with a high-quality recommendations based on the latest scientific findings would contribute to a more successful management of health issues associated with prolonged sitting. Additionally, it is important that healthcare professionals – who are responsible for spreading the recommendations – are familiar with the scientific background (i.e. knowledge and understanding the human body and the influences of sitting on it). Only then will they be able to judge the both existing recommendations or products, and especially the innovations and novelty on the field.

For this purpose, this narrative review article discusses the most common sitting-related etiological mechanism behind the development and/or persistence of LBP. We also provide recommendations, following from the aforementioned findings. The influence of sitting on spinal structures and consequently on trunk neuromuscular function is dependent upon the type and duration of sitting, and the characteristic of the individual's anatomical structures (geometry, internal tissue properties, presence of other pathologies, etc.). The mechanisms behind LBP development can be divided into direct and indirect, acute and chronic,

reversible and irreversible, etc. For the clarity of the text, we divided them based on the affected tissue type.

Effects of Sitting on Bony and Cartilaginous Tissues

In older literature on injurious effects of sitting, intervertebral discs were given the most attention. Because of posterior pelvic tilt, the spine (particularly the lower segments) is in slightly flexed position even during upright sitting posture (Fig. 1). During flexion, the load is unequally distributed between the anterior (increased compressive load) and posterior (tensile load in case of full flexion) part of the intervertebral disc²⁰. This combination forces the disc's nucleus to move backwards (Fig. 2), which contributes to the development of radial fissures in posterior annulus fibrosus (outer fibrous ring)^{21–23}. The injury starts with the lamellae of the annulus being distorted. Radial fissures on inner lamellas are forming, permitting the nucleus to enter the delaminated pockets. The fissures are then spreading progressively radially outwards. In time, the extrusion of the nucleus may occur, resulting in an injury known as disc hernia, though this process may take years to reach such severe state. Several studies have reported an increased incidence of disc hernia in sedentary population^{24–26}. The aforementioned mechanism of disc behavior is supported by a landmark study, during which the posterior shift of the nucleus was observed in asymptomatic healthy subjects after only 10 minutes of unsupported relaxed upright sitting (the lumbar lordosis is somewhat reduced during such posture). These changes were seen for L4/L5 and L5/S1 discs (5.7 mm and 6.9 mm on average, respectively), but not for higher segments²⁷. These changes were even more pronounced after slouched sitting, but were not significant when a lumbar support was added during upright sitting. Based on these findings, we recommend that neutral position of the spine is maintained during sitting, with properly designed lumbar support being among the accessories that can be of substantial help.

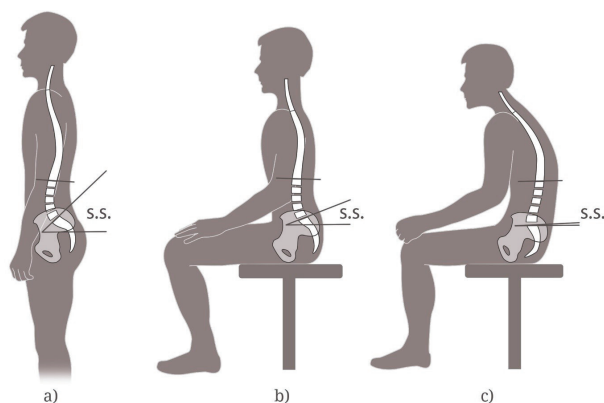


Fig. 1. Spinal curvatures and pelvic orientation are postural dependent. Compared with relaxed standing (a), there is a posterior pelvic tilt (e.g. diminished sacral slope (S.S.)) and a decrease in lumbar lordosis in unsupported upright sitting (b). The effect is even more pronounced in slouched sitting (c).

Another commonly discussed mechanism is a decrease in disc hydration and/or nourishment as a consequence of static compressive load during prolonged sitting. The nutritional supply to the discs, mainly achieved by diffusion, is hindered when disc is dehydrated²⁸. The metabolism of the disc is additionally impaired due to the absence of fluid transport within the disc during static loading²⁹. On the contrary, water is intermittently forced in and out of the disc during dynamic loads, which supports the efflux of various macromolecules (waste products, growth factors, proteases, newly formed molecules of disc matrix, etc.). Additionally, poorly nourished disc is more prone to degeneration³⁰.

Reduced disc hydration shows as a decrease in disc height and volume. When discs are in such state, the compressive load is partially shifted to the annulus fibrosus and facet joints, while the pressure within the disc is decreased³¹. When the vertical component of compressive force exerted on annulus fibrosus exceeds the horizontal force, caused by inter-discal hydrostatic pressure, injuries of interlaminar matrix could occur²⁰, which stimulates or accelerates the degenerative processes. These injuries could occur on the anterior aspect of the disc, where the compression is the highest during spine flexion. One of the ground-breaking studies reported that symmetrical disc degeneration is more prevalent in those who spent most of their worktime seated³².

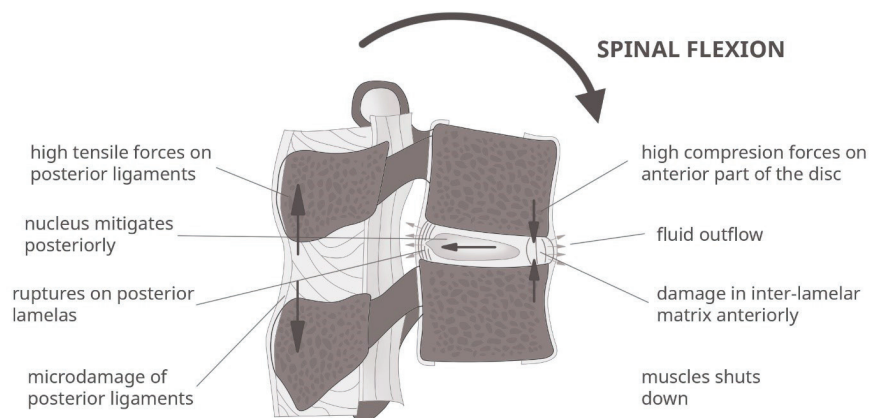


Fig. 2. Spinal flexion is associated with higher compressive forces acting on the anterior part of the intervertebral disc and tensile forces acting on the posterior ligaments of the spine. Prolonged exposure to spinal flexion has detrimental effects on spinal tissues. Several often proposed harmful outcomes due to sustained spinal flexion are shown.

The degree of dehydration and consequent drop in disc height is dependent upon the magnitude, type and duration of the load. Higher and continuous loads lead to a more substantial dehydration³³. Frequent subtle trunk movements (like in sitting on a chair with movable seat and/or backrest) are better for preserving disc hydration compared to static posture^{34,35}, while vibrations exacerbate the dehydration³⁶. In line with the size of the load, the decrease in disc height is most noticeable after slouched sitting, followed by unsupported upright sitting³³ and lowest after sitting on a chair with reclined backrest with good lumbar support³⁷. The reported degree of differences

in disc height due to sitting exposures were within the range of diurnal variations. It is not unusual for the spine to be up to 26 mm shorter at evening compared to morning time³⁸. During normal daily activities the spine is exposed to spinal loading which causes a decrease in discs height, mainly due to fluid outflow. Around 80% of the spinal height difference is present as soon as three hours after night sleep³⁹. We did not find any evidence that sitting would lead to detrimental decrease in disc height. It seems that disc dehydration during sitting is not as significant as it is sometimes promoted to be and that other postures may be just as harmful in this respect. Relaxed sitting with reclined backrest causes lower loads than relaxed standing⁴⁰. One study reported partial restoration of disc height with such type of sitting posture, after it was reduced by standing work³⁷.

After prolonged sitting with flexed lumbar spine, it takes a certain amount of time for discs to return to their neutral shape. It has also been discussed that such reversible deformation (flattened anterior part and posteriorly shifted nucleus) changes the position of the mechanical fulcrum²³, which temporarily decreases the resistance to loading¹⁵. The injury risk is increased particularly when loads are applied on flexed spine. To restore the geometry of the discs, most importantly the position of the nucleus, few minutes of standing and/or walking is recommended. Moreover, any substantial mechanical strain (e.g. lifting

heavy loads), especially in spinal flexion condition, should be avoided immediately after prolonged sitting¹⁵.

The potential influences of prolonged sitting on facet joints, sacroiliac joint or pubic symphysis have not been often discussed in the present literature. During slouched sitting, the upper medial part of the superior facet joints is believed to be under increased load^{41,42}. It was also reported that cross-legged sitting slightly increases the strain on the sacroiliac joint and pubic symphysis⁴³. However, short periods of such sitting posture are most likely not harmful.

Effects of Sitting on Muscles

Low and relatively static muscle activity during sitting can lead to discomfort and muscle pain⁴⁴. It was shown that as soon as after 30 seconds of 2% of maximal voluntary contraction (MVC), the oxygen transport in *m. erector spinae* is significantly reduced⁴⁵. After 30 minutes of exposure, the signs of fatigue are already present⁴⁶. The level of muscle activity in healthy individuals differs between sitting types. Values seen during unsupported upright sitting have been reported to be 4 to 12 % of MVC for thoracic part of *m. erector spinae*, between 2 and 17% for *m. multifidus*, 10% for *m. psoas major* and between 2 and 4% for abdominal muscles (*m. transversus abdominis, obliquus internus and obliquus externus*)⁴⁷⁻⁴⁹. Prolonged sitting of such type is therefore to be avoided, as it certainly leads to muscle discomfort. When sitting on chairs without backrest or with a poorly designed backrest, people will eventually adopt a slouched sitting position, which require less muscle effort to maintain⁴⁸. Namely, near full lumbar flexion, muscle silence occur. The phenomenon is known as a flexion-relaxation phenomenon⁴⁷ and it was proposed that muscle silence occur when the major part of the counter torque to prevent excessive flexion is generated by passive tissues – vertebral column and posterior spinal ligaments⁵⁰. The influence of sitting on those are discussed in previous and further chapter, respectively.

A good lumbar support on the backrest enables the user to sit upright, preserving the neutral lumbar lordosis, while the muscle activity is relatively low. Muscle activity does not exceed 2 % of MVC when sitting on an office chair⁵¹⁻⁵³. However, even when such optimal posture is achieved, slight movements in all directions are still advised. Another benefit of good back support is a decrease of the load imposed to spinal structures (40 % less compared to straight sitting without backrest)⁵⁴. Further reductions can be achieved by tilting the backrest backward. It is important to stress that higher muscle activity (and consequent higher force) leads to an increase in compressive spinal load. Studies have shown that office workers seldom exploit the benefits of using the backrest – they adopt a slouched sitting posture even on office chairs^{53,55}. People should be encouraged towards using a backrest with good lumbar support.

Local painful spots, (sensitive to touch, contraction and/or stretch) known as myofascial trigger points may develop after prolonged static muscle activity, probably because the alterations in local muscle metabolism⁵⁶. They are often present in individuals suffering from LBP, mainly in the muscles of lumbo-pelvic-hip complex. Liu & Palmer⁵⁷ reported an increased prevalence of myofascial trigger points in *m. iliacus* in students, sitting >8h/day, compared to those sitting less. In office workers, shoulder and upper back musculature is affected more often⁵⁸. Preventive measures include using properly-designed backrest and performing small movements of the trunk during sitting. It was proposed that frequent changes in sitting position (when loads are mitigating from one tissue to another) have also overall important role in avoiding specific spinal tissue overload¹⁵.

Sufficient level of everyday physical activity is essential to preserve normal and/or healthy muscle status. Sedentary lifestyle, combined with physical inactivity leads to decline in muscle mass⁵⁹, alterations in muscle fiber performance⁶⁰, muscle imbalances⁶¹, deterioration of trunk sensory-motor function⁶² etc. Efficient muscle system is important to maintain spinal health, as it provides stability and resistance to imposed loads, together with passive (ligaments, discs, bones) and control (nervous) systems⁶³. The incidence of LBP was shown to be increased with poor strength and endurance of trunk musculature⁶⁴, functional (agonist-antagonist) trunk asymmetries⁶⁵ and limited hip flexion range of motion⁶⁶.

During sitting, hip, knee and usually the spine as well, are in flexed position. Consequently, certain muscles are in shortened position, while others are stretched, making them prone to become shortened or overstretched, respectively. Muscle groups that may become short with sitting include single-joint hip flexors (*m. psoas* and *iliacus*) and sometimes two-joint hip extensors (*m. semitendinosus, semimembranosus* and *biceps femoris*), horizontal shoulder flexors (*m. pectoralis major*) and neck extensors (*m. trapezius, splenius*, etc.). Muscles that are significantly stretched during sitting are single-joint hip extensors (*m. gluteus maximus*), certain external hip rotators (*m. piriformis*), trunk extensors (*m. erectors spinae*) and scapular adductors (*m. trapezius, rhomboideus major* and *minor*). In case of either irregularities, dysfunction in movement patterns and abnormalities in posture will begin to show. Features of typical posture in sedentary people include accentuated anterior pelvic tilt, pronounced lumbar lordosis, and protracted and sometimes even protruding scapulae. Lumbar lordosis may become less pronounced in individuals who spent a majority of time in slouched sitting position, due to the stretching of spinal passive tissues on posterior site and shortening of two-joint hip extensors (i.e. the hamstrings)⁶⁷.

Muscle asymmetries represent a significant risk factor for pain syndromes and injuries⁶¹, as they lead to unfavorable strain imposed to musculoskeletal system. Non-optimal joint alignment and movement trajectory of individual structures of the joint causes to uneven load distribution within the joint surface⁶⁸⁻⁷⁰. Active breaks, including both resistance exercise and stretching, are often recommended to perform during worktime. No solid epidemiological evidence is present to support the presumption that flexibility and/or posture are affected by prolonged sitting. Individuals, spending a majority of worktime in seated position should regularly engage in physical activity to preserve their muscle function and overall well-being.

Effects of Sitting on Ligaments and Related Tissues

Sitting is usually accompanied with some degree of flexion in lumbo-pelvic area. Consequently, tensile load is place on posterior spinal ligaments⁷¹, sacroiliac joint ligaments⁷², as well as fascia⁷³ and facet joint capsules⁷⁴ in this

Prolonged sitting is a widespread phenomenon of modern society. Unfortunately, it is associated with numerous health risks, which also include pathologies and syndromes of musculoskeletal system. Daily sitting time should be cut to the minimum, and science-based recommendations should be followed when sitting. The aim of this article was to review currently available scientific literature, which contribute to understanding of the influence of sitting on human body (particularly its locomotor system) and are the basis for current recommendations on sitting. We believe that professionals, as well as the interested general population, should know about the background of these recommendations. With increased awareness and understanding on this field, the power of

“ergonomic” products, falsely promoted as healthy and/or pain relieving, will also be reduced.

To conclude, the recommendations to improve sitting ergonomics are briefly reviewed (Fig. 3). To avoid pain syndromes and more serious injuries of musculoskeletal system, it is recommended to: (1) maintain neutral spinal curvature during sitting, (2) avoid prolonged static postures and (3) reduce the biomechanical loads. Additionally, it is important to (4) implement frequent bouts of standing or walking and to (5) incorporate short active breaks into the worktime. Individuals spending a majority of the day seated, should (6) follow the recommendations on physical activity engagement. After prolonged sitting, (7) performing heavy labor should be avoided.

REFERENCES

1. WALKER BF, *J Spinal Disord Tech*, 13 (2000) 205. – 2. DUNN KM, HESTBAEK L, CASSIDY JD, *Clin Rheumatol* 27 (2013) 591. DOI:10.1016/j.berh.2013.09.007. – 3. HEMMILA, HM. *Spine* 27 (2002) 647. – 4. VAN TULDER MW, KOES BW, BOUTER LM, *Pain*, 62 (1995) 233. – 5. EKMAN M, JONHAGEN S, HUNSCHE E, JONSSON L, *Spine* 30 (2005) 1777. – 6. DAGENAIS S, CARO J, HALDEMAN SA. *Spine J*, 8 (2008) 8. DOI:10.1016/j.spinee.2007.10.005. – 7. CAREY TS, EVANS AT, HADLER NM, LIEBERMAN G, KALSBECK WD, JACKMAN AM, FRYER JG, MCNUTT RA. *Spine*, 21 (1996) 339. – 8. HART LG, DEYO RA, CHERKIN DC, *Spine*, 20 (1995) 11. – 9. VAN DEN BOSCH MAAJ, HOLLINGWORTH W, KINMONTH AL, DIXON AK, *Clinical Radiol*, 59 (2004) 69. DOI:10.1016/j.crad.2003.08.012. – 10. WHITE AA, GORDON SL, *Spine* 7 (1982) 141. – 11. MENSE S, GERWIN RD, Springer (Berlin, Germany, 2010). – 12. MATTHEWS CE, GEORGE SM, MOORE SC, BOWLES HR, BLAIR A, PARK Y, TROIANO RP, HOLLENBECK A, SCHATZKIN A, *Am J Clin Nutr* 95 (2012) 437. DOI: 10.3945/ajcn.111.019620. – 13. TUDOR-LOCKE C, BRASHEARMM, JOHNSON WD, KATZMARZYK PT, *Int J Behav Nutr Phys Act* 7 (2010) 60. DOI:10.1186/1479-5868-7-60. – 14. HEALY GN, DUNSTAN DW, SALMON J, CERIN E, SHAW JE, ZIMMET PZ, OWEN N, *Diabetes care*, 30 (2007) 1384. DOI:10.2337/dc07-0114. – 15. MCGILL S, *Human Kinetics* (Champaign, Illinois, USA, 2007). – 16. BRIDGER RS, CRC Press (Boca Raton, Florida, USA, 2009). – 17. DREISCHARF M, BERGMANN G, WILKE HJ, ROHLMANN A, *Spine*, 35 (2010) 2015, DOI:10.1097/BRS.0b013e3181d55d52. – 18. MCKENZIE R, MAY S, *Orthopedic Physical Therapy Products*, Minneapolis, Minnesota, USA, 2003). – 19. MAY S, NANCHE G, PINGLE S, *J Man Manip Ther* 19 (2011) 48. DOI: 10.1179/2042618610y.0000000004. – 20. ADAMS MA, DOLAN P, *Clin Biomech* 10 (1995) 3. – 21. NACHEMSON A, MORRIS JM, *J Bone Joint Surg Am*, 46 (1964) 1077. – 22. ADAMS MA, HUTTON WC, *Spine*, 10 (1985) 524. – 23. WILDER DG, POPE MH, FRYMOYER JW, *J Spinal Disord* 1 (1988) 16. – 24. KANAYAMAM, TOGAWA D, TAKAHASHI C, TERA I, HASHIMOTO T, *J Neurosurg Spine*, 11 (2009) 501. DOI: 10.3171/2009.5.spine.08675. – 25. KELSEY JL, *Int J Epidemiol*, 4 (1975) 197. – 26. KELSEY JL, *Rheumatol Rehabil* 14 (1975) 144. – 27. ALEXANDER LA, HANCOCK E, AGOURIS I, SMITH FW, MACSWEEN A, *Spine*, 32 (2007) 1508. DOI: 10.1097/BRS.0b013e318067decb. – 28. SOKANE DM, SHIRAZI-ADL A, URBAN JP, *J Biomech* 40 (2007) 2645. DOI: 10.1016/j.jbiomech.2007.01.003 (2007). – 29. URBAN JP, SMITH S, FAIRBANK JC, *Spine*, 29 (2004) 2700. – 30. GRUNHAGEN T, WILDE G, SOKANE DM, SHIRAZI-ADL SA, URBAN JP, *J Bone Joint Surg Am*, 88 (2006) 30. DOI: 10.2106/jbjs.e.01290. – 31. ADAMS MA, MCMILLAN DW, GREEN TP, DOLAN P, *Spine*, 21 (1996) 434. – 32. VIDEMAN T, NURMINEN M, TROUP JD, *Spine* 15 (1990), 728. – 33. EKLUND JA, CORLETT EN, *Spine*, 9 (1984) 189. – 34. VAN DEURSEN DL, GOOSSENS RH, EVERS JJ, VAN DER HELM FC, VAN DEURSEN LL, *Appl Ergon*, 31 (2000) 95. – 35. VAN DIEEN JH, DE LOOZE MP, HERMANS V, *Ergonomics*, 44 (2001) 739. DOI: 10.1080/00140130120297. – 36. SULLIVAN A, MCGILL SM, *Spine*, 15 (1990) 1257. – 37. LEIVS-ETH G, DRERUP B, *Clin Biomech*, 12 (1997) 409. – 38. ROBERTS N, HOGG D, WHITEHOUSE GH, DANGERFIELD P, *Clin Anat*, 11 (1998) 1. DOI: 10.1002/(sici)1098-2353. – 39. REILLY T, TYRRELL A, TROUP JD, *Chronobiol Int*, 1 (1984) 121. – 40. WILKE HJ, NEEF P, CAIMI M, HOOGLAND T, CLAES LE, *Spine*, 24 (1999) 755. – 41. BOGDUK N, Churchill Livingstone (London, United Kingdom, 2005). – 42. HEDMAN TP, FERNIE GR, *Spine*, 22 (1997), 734. – 43. SNIJDERS CJ, HERMANS PF, KLEINRENSINK GJ, *Clin Biomech*, 21 (2006) 116. DOI: 10.1016/j.clinbiomech.2005.09.002. – 44. JONSSON B, *Eur J Appl Physiol*, 57 (1988) 305. MCGILL SM, HUGHSON RL, PARKS K, *Ergonomics*, 43 (2000) 486. DOI: 10.1080/001401300184369 (2000). – 46. VAN DIEEN JH, WESTEERING-VAN DER PUTTEN EP, KINGMA I, DE LOOZE MP, *J Electromyogr Kinesiol*, 19 (2009) 398. DOI: 10.1016/j.jelekin.2007.11.010. – 47. CALLAGHAN JP, DUNK NM, *Clin Biomech*, 17 (2002) 360. – 48. CLAUS AP, HIDES JA, MOSELEY GL, HODGES PW, *Spine*, 34 (2009) E208. DOI: 10.1097/BRS.0b013e3181908ead. – 49. JUKER D, MCGILL S, KROPP P, STEFFEN T, *Med Sci Sports Exerc*, 30 (1998) 301. – 50. FLOYD WF, SILVER PH, *J Physiol*, 129 (1955) 184. – 51. GREGORY DE, DUNK NM, CALLAGHAN JP, *Hum Factors*, 48 (2006) 142. – 52. BEACH TA, MOONEY SK, CALLAGHAN JP, *Work*, 20 (2003) 237. – 53. MORK PJ, WESTGAARD RH, *Clin Biomech*, 24 (2009) 169. DOI: 10.1016/j.clinbiomech.2008.11.001. – 54. ROHLMANN A, ZANDER T, GRAICHEN F, DREISCHARF M, BERGMANN G, *Spine J*, 11 (2011) 870. DOI: 10.1016/j.spinee.2011.06.017. – 55. MORL F, BRADL I, *J Electromyogr Kinesiol*, 23 (2013) 362. DOI: 10.1016/j.jelekin.2012.10.002. – 56. BRON C, DOMMERHOLT JD, *Curr Pain Headache Rep*, 16 (2012) 439. DOI: 10.1007/s11916-012-0289-4 (2012). – 57. LIU Y, PALMER JL, *J Am Osteopath Assoc*, 112 (2012) 285. – 58. MYBURGH C, HARTVIGSEN J, AAGAARD P, HOLSGAARD-LARSEN A, *Chiropr Man Therap*, 20 (2012) 36. DOI: 10.1186/2045-709x-20-36. – 59. BELAVY DL, ARMBRECHT G, RICHARDSON CA, FELSENBURG D, HIDES JA, *Spine*, 36 (2011) 137. DOI: 10.1097/BRS.0b013e3181cc93e8. – 60. ANDERSEN JL, GRUSCHY-KNUDSEN T, SANDRI C, LARSSON L, SCHIAFFINO SJ, *Appl Physiol* (1985), 86 (1999), 455. – 61. PAGE P, FRANK C, LARDNER R, *Human Kinetics* (Champaign, Illinois, USA, 2010). – 62. SARABON N, ROSKER J, *Biomed Res Int*, 2015 (2015) 309386. DOI: 10.1155/2015/309386. – 63. PANJABI MM, *J Spin Disor*, 5 (1992) 383. – 64. STEELE J, BRUCE-LOW S, SMITH D, *Curr Med Res Opin*, 30 (2014) 865. DOI: 10.1185/03007995.2013.875465 (2014). – 65. MCGILL S, GRENIER S, BLUHM M, PREUSS R, BROWN S, RUSSELL C, *Ergonomics*, 46 (2003) 731. DOI: 10.1080/0014013031000090134. – 66. ROACH SM, SAN JUAN JG, SUPRAK DN, LYDA M, BIES AJ, BOYDSTON CR, *Int J Sports Phys Ther*, 10 (2015) 13. – 67. SARABON N, KOSAK R, FAJON M, DRAKSLAR J, *Šport* 35 (2005) 35. – 68. MIHATA T, GATES J, MCGARRY MH, LEE J, KINOSHITA M, LEE TQ, *Am J Sports Med*, 37 (2009) 2222. DOI: 10.1177/0363546509337450. – 69. BARATTA R, SOLOMONOW M, ZHOU BH, LETSON D, CHUINARD R, D'AMBROSIA R, *Am J Sports Med*, 16 (1988) 113. – 70. ELIAS JJ, BRATTON DR, WEINSTEIN DM, COSGAREA AJ, *J Biomech*, 39 (2006) 865. DOI: 10.1016/j.jbiomech.2005.01.030. – 71. ADAMS MA, MCNALLY DS, CHINN H, DOLAN P, *Clin Biomech* 9 (1994) 5. DOI:

- 10.1016/0268-0033(94)90052-3. – 72. HAMMER N, STEINKE H, LING-SLEBE U, BECHMANN I, JOSTEN C, SLOWIK V, BÖHME J, Spine J, 13 (2013) 1321. DOI: 10.1016/j.spinee.2013.03.050. – 73. DOLAN P, MANNION AF, ADAMS MA, J Biomech, 27 (1994) 1077. – 74. SWANE-POEL MW, ADAMS LM, SMEATHERS JE, Ann Rheum Dis, 54 (1995) 182. – 75. SOLOMONOW M, J Electromyogr Kinesiol, 14 (2004) 49. DOI: 10.1016/j.jelekin.2003.09.011. – 76. SOLOMONOW M, J Bodyw Mov Ther, 13 (2009) 36. DOI:10.1016/j.jbmt.2008.02.001. – 77. SHIN G, MIRKA GA, Clin Biomech, 22 (2007) 965. DOI: 10.1016/j.clinbiomech.2007.06.003. – 78. MCGILL SM, BROWN S, Clin Biomech, 7 (1992) 43. DOI: 10.1016/0268-0033(92)90007-Q. – 79. SANCHEZ-ZURRAGA D, ADAMS MA, DOLAN P, Spine, 35 (2010) 517. DOI: 10.1097/BRS.0b013e3181b967ea. – 80. HENDERSHOT B, BAZRGARI B, MUSLIM K, TOOSIZADEH N, NUSSBAUM MA, MADIGAN ML, Clin Biomech, 26 (2011) 250. DOI: 10.1016/j.clinbiomech.2010.09.019. – 81. HOWARTH SJ, GLISIC D, LEE JG, BEACH TA, J Electromyogr Kinesiol, 23 (2013) 587. DOI:10.1016/j.jelekin.2013.01.004. – 82. BAZRGARI B, HENDERSHOT B, MUSLIM K, TOOSIZADEH N, NUSSBAUM MA, MADIGAN ML, Ergonomics, 54 (2011) 1043. DOI: 10.1080/00140139.2011.614357. – 83. CHOLEWICKI J, SILFIES SP, SHAH RA, GREENE HS, REEVES NP, ALVI K, GOLDBERG B, Spine, 30 (2005) 2614. – 84. BROWN SH, MCGILL SM, J Electromyogr Kinesiol, 19 (2009) 727. DOI: 10.1016/j.jelekin.2008.04.009. – 85. DOLAN KJ, GREEN A, Man Ther, 11 (2006) 202. DOI: 10.1016/j.math.2006.03.003. – 86. HENDERSHOT BD, TOOSIZADEH N, MUSLIM K, MADIGAN ML, NUSSBAUM MA, J Biomech, 46 (2013) 2554. DOI: 10.1016/j.jbiomech.2013.07.021.

K. Kastelic

*Department of Health Research, Andrej Marusic Institute, University of Primorska, Muzejski trg 2, 6000 Koper, Slovenia
e-mail: kaja.kastelic@s2p.si*

SJEDENJE I BOL U DONJEM DIJELU LEĐA: PREGLED ETIOLOŠKIH MEHANIZAMA

SAŽETAK

Dugotrajno sjedenje se općenito smatra rizičnim faktorom za nastanak i/ili trajanje boli u donjem dijelu leđa (low back pain, LBP) za koju je do sada utvrđeno više uzročnih mehanizama. U starijoj literaturi bol u donjem dijelu leđa i sjedenje se obično povezuju s kumulativnim oštećenjima intervertebralnog diska. Novije studije sve češće uzrok boli pripisuju posteriornim slabinsko-zdjeličnim ligamentima koji se nalaze pod vlačnim opterećenjem pri pognutoj kralježnici. Takvo opterećenje može dovesti do (mikro)trauma i promjena u osjetno-motoričkoj funkciji, što povećava rizik za prekomjerno trošenje određenih struktura i akutnu traumatu. Prekomjerno trošenje fasetnih ili sakroilijakalnih zglobova do sada nije u većoj mjeri istraživano. Neki priručnici navode miofascijalne žarišne točke kao mogući uzrok boli. Dugotrajno sjedenje je povezano sa smanjenom pokretljivošću pregibača kuka, što izaziva nepovoljan pritisak na slabinsko-zdjelično područje i povećava rizik oštećenja u slabinskom dijelu kralježnice.