

NASA/TM—2019–220131



# **Development of an Additively Manufactured Capacitive Humidity Sensor for the International Space Station**

*K.T. Chang, A.T. Rogers, J.A. Colby, F.V. Thompson, and T.D. Rolin  
Marshall Space Flight Center, Huntsville, Alabama*

**March 2019**

## The NASA STI Program...in Profile

Since its founding, NASA has been dedicated to the advancement of aeronautics and space science. The NASA Scientific and Technical Information (STI) Program Office plays a key part in helping NASA maintain this important role.

The NASA STI Program Office is operated by Langley Research Center, the lead center for NASA's scientific and technical information. The NASA STI Program Office provides access to the NASA STI Database, the largest collection of aeronautical and space science STI in the world. The Program Office is also NASA's institutional mechanism for disseminating the results of its research and development activities. These results are published by NASA in the NASA STI Report Series, which includes the following report types:

- **TECHNICAL PUBLICATION.** Reports of completed research or a major significant phase of research that present the results of NASA programs and include extensive data or theoretical analysis. Includes compilations of significant scientific and technical data and information deemed to be of continuing reference value. NASA's counterpart of peer-reviewed formal professional papers but has less stringent limitations on manuscript length and extent of graphic presentations.
- **TECHNICAL MEMORANDUM.** Scientific and technical findings that are preliminary or of specialized interest, e.g., quick release reports, working papers, and bibliographies that contain minimal annotation. Does not contain extensive analysis.
- **CONTRACTOR REPORT.** Scientific and technical findings by NASA-sponsored contractors and grantees.
- **CONFERENCE PUBLICATION.** Collected papers from scientific and technical conferences, symposia, seminars, or other meetings sponsored or cosponsored by NASA.
- **SPECIAL PUBLICATION.** Scientific, technical, or historical information from NASA programs, projects, and mission, often concerned with subjects having substantial public interest.
- **TECHNICAL TRANSLATION.** English-language translations of foreign scientific and technical material pertinent to NASA's mission.

Specialized services that complement the STI Program Office's diverse offerings include creating custom thesauri, building customized databases, organizing and publishing research results...even providing videos.

For more information about the NASA STI Program Office, see the following:

- Access the NASA STI program home page at <http://www.sti.nasa.gov>
- E-mail your question via the Internet to [help@sti.nasa.gov](mailto:help@sti.nasa.gov)
- Phone the NASA STI Help Desk at 757-864-9658
- Write to:  
NASA STI Information Desk  
Mail Stop 148  
NASA Langley Research Center  
Hampton, VA 23681-2199, USA

NASA/TM—2019–220131



# **Development of an Additively Manufactured Capacitive Humidity Sensor for the International Space Station**

*K.T. Chang, A.T. Rogers, J.A. Colby, F.V. Thompson, and T.D. Rolin  
Marshall Space Flight Center, Huntsville, Alabama*

National Aeronautics and  
Space Administration

Marshall Space Flight Center • Huntsville, Alabama 35812

---

**March 2019**

## Acknowledgments

Khoua Chang, Aaron Rogers, and Joel Colby would like to thank Furman Thompson, Angela Shields, Terry Rolin, and Charles Wu for their guidance, mentorship, and facilitation on this project. They would not have been able to complete their research without the full support of the Electrical, Electronic, and Electromechanical Parts, Packaging, and Fabrication Branch at NASA Marshall Space Flight Center. Lastly, they would like to thank NASA and the Wisconsin, Idaho, and Florida Space Grant Consortiums for making this research opportunity possible.

Available from:

NASA STI Information Desk  
Mail Stop 148  
NASA Langley Research Center  
Hampton, VA 23681-2199, USA  
757-864-9658

This report is also available in electronic form at  
<<http://www.sti.nasa.gov>>

## TABLE OF CONTENTS

|                       |    |
|-----------------------|----|
| 1. INTRODUCTION ..... | 1  |
| 2. BACKGROUND .....   | 2  |
| 3. METHODOLOGY .....  | 4  |
| 3.1 Design .....      | 4  |
| 3.2 Build .....       | 6  |
| 3.3 Test .....        | 11 |
| 4. RESULTS .....      | 14 |
| 5. CONCLUSION .....   | 17 |
| 6. FUTURE GOALS ..... | 18 |
| REFERENCES .....      | 19 |

## LIST OF FIGURES

|     |  |    |
|-----|--|----|
| 1.  | Interdigitated, spiral, zigzag, and honeycomb electrode patterns ..... | 4  |
| 2.  | Failure by overspray .....   | 5  |
| 3.  | Failure by electrical shorts—poor resolution .....                     | 5  |
| 4.  | Failure by overspray and inconsistent electrode spacing .....          | 6  |
| 5.  | Drop watcher screenshot .....  | 7  |
| 6.  | Completed print (fresh ink) .....                                      | 8  |
| 7.  | Post-sintering electrode .....   | 8  |
| 8.  | Example of completed sensor .....                                      | 9  |
| 9.  | Initial house design .....   | 10 |
| 10. | Additional base designs .....  | 10 |
| 11. | Sensor grille .....  | 11 |
| 12. | Humidity chamber setup .....   | 13 |
| 13. | Capacitance testing .....  | 14 |
| 14. | Recovery .....   | 15 |
| 15. | BHC_dielectric comparison .....  | 15 |

## LIST OF TABLES

|    |                                       |    |
|----|---------------------------------------|----|
| 1. | Example print settings chart .....    | 7  |
| 2. | Initial test results .....            | 11 |
| 3. | Second round of testing results ..... | 12 |

## LIST OF ACRONYMS AND SYMBOLS

|      |                     |
|------|---------------------|
| BHC  | big honeycomb       |
| KOH  | potassium hydroxide |
| NaCl | sodium chloride     |



## NOMENCLATURE

$A$  cross sectional area of overlapping electrodes

$C$  capacitance

$d$  electrode spacing

$RH$  percent relative humidity

$\epsilon_0$  permittivity of free space

$\kappa$  dielectric constant

### Subscripts

$aq$  aqueous ion

$s$  spectator ion



## TECHNICAL MEMORANDUM

### **DEVELOPMENT OF AN ADDITIVELY MANUFACTURED CAPACITIVE HUMIDITY SENSOR FOR THE INTERNATIONAL SPACE STATION**

#### **1. INTRODUCTION**

The ability to measure humidity on the International Space Station and other long-duration spaceflight missions is a crucial part of the onboard systems. For example, the Environmental Control and Life Support System (ECLSS) needs to know the amount of humidity in the air to make decisions about whether it should spend power to run the dehumidifier systems to attempt to reclaim that water. Other issues can arise if the humidity reaches too high of levels and condensation builds up on electrical components. With that in mind, it is vital that the spacecraft keeps spare sensors on board or has the ability to manufacture new sensors on demand. An additively manufactured sensor would be additionally beneficial because it would save space onboard that would normally be taken up by spares, save money from costly resupply missions, and allow the sensor to be constantly updated with the most effective design. This Technical Memorandum outlines a development process carried out to design, manufacture, and test an additively manufactured humidity sensor.

## 2. BACKGROUND

To comprehend how to create such a sensor, one must first have an in-depth understanding of electronic sensing techniques and of additive manufacturing technology. Humidity is a measurement of how much water vapor is in the air. Absolute humidity is the mass of water per given volume of air. Absolute humidity is difficult to measure directly; therefore, we express it as ‘percent relative humidity,’ *RH*. That is the amount of water vapor present in air expressed as a percentage of the amount needed for saturation at the same temperature. Relative humidity can be found in several ways, depending on which values are known.

There are two main electrical properties used for sensing changes in pressure, humidity, or temperature—resistance and capacitance. If the change in the electrical property can be directly linked to the change in the physical property, then if one value is known, the other can be found. In this fashion, hygroscopic, or water-absorbing materials, can be used as either a resistor or capacitor in a circuit and indirectly indicate the humidity of the current atmosphere.

With capacitive sensors, the change in humidity is attributed to water molecules bonding to the dielectric and changing the capacitance. The conductive electrodes are porous to allow moisture to reach the dielectric sandwiched between the two electrodes. There are many *RH* sensors already on the market today, and they are produced by many different electronics companies. With this diversity comes a comparable variety of different dielectric materials used for sensing humidity; aluminum, tantalum, silicon, polymers, and potassium hydroxide are all being used in capacitive humidity sensors.<sup>1</sup>

Another way is to use potassium hydroxide (KOH) powder as the dielectric, which was great for responding to a step increase in humidity.<sup>2</sup> KOH retains moisture well, which makes it great for moisture detection. However, once the humidity decreases again, the dielectric remains saturated (holds onto the water molecules too well), and takes much longer to stabilize at the new humidity level. The dielectric material<sup>3,4</sup> used in this project was developed in house, and sensors built from the material have demonstrated excellent recovery properties after saturation.

Some of the many benefits of using capacitive sensors is the ability to operate well in wet environments for an extended period of time and their low maintenance requirements; and they have low hysteresis and high stability. The general form of calculating the capacitance  $C$  is as shown in Eq. (1).

$$C = \epsilon_0 \kappa A/d \quad (1)$$

where

$C$  = capacitance

$\epsilon_0$  = permittivity of free space

$\kappa$  = dielectric constant

$A$  = cross-sectional area of overlapping electrodes

$d$  = electrode spacing.

### 3. METHODOLOGY

The methodology to develop the sensors consists of designing, building, and testing.

#### 3.1 Design

The design phase began by envisioning several electrode design patterns following an interdigitated arrangement. Since the interdigitated design maximizes surface area, requires less printing than parallel plates, and allows moisture to penetrate into all of the dielectric, it was chosen as the capacitor style used in this project. Some of the most notable designs included spiral, zigzag, and honeycomb patterns (fig. 1).

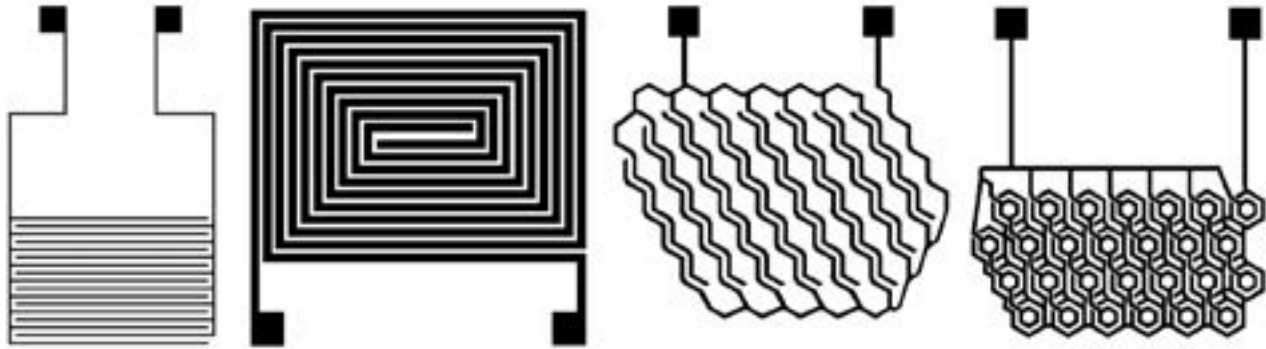


Figure 1. Interdigitated, spiral, zigzag, and honeycomb electrode patterns.

The initial design requirements were that there be two electrodes separated by a gap such that they form a capacitor without any electrical shorts, that each pattern had a pair of probe points from which testing equipment could be connected, and that each pattern fit within a 1-in<sup>2</sup> area. Each pattern was drawn in computer-aided design (CAD) software and then converted to a monochrome bitmap file to send to the printer.

Once the best electrode designs made it through the build and testing stages, the requirements were tightened to standardize the designs so the sensor's housing could be developed accordingly. By designing each layout to have connecting pads in the same spot, the different versions of the housing were designed in a single configuration rather than having to develop separately for each electrode layout.

After printing, the electrodes were meticulously inspected both visually and electrically for print quality and electrical separation using a microscope and the multimeter, respectively. The prints needed to be clean and have good resolution, be free of electrical shorts, and be able

to produce a low resistance value. Failed prints were photographed and learned from with each new iteration. The sheer volume of failures was a testament to how precisely the inkjet printer must be calibrated to work correctly. Each of the electrode prints were observed under the microscope for quality resolutions. This includes clean edges, no overspray, and consistent electrode spacing. Figures 2–4 are electrode prints that failed inspection for different reasons.

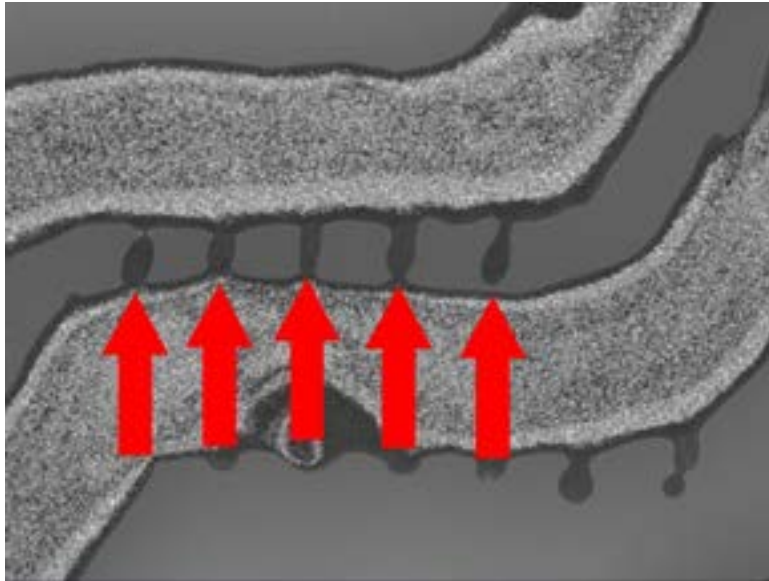


Figure 2. Failure by overspray.

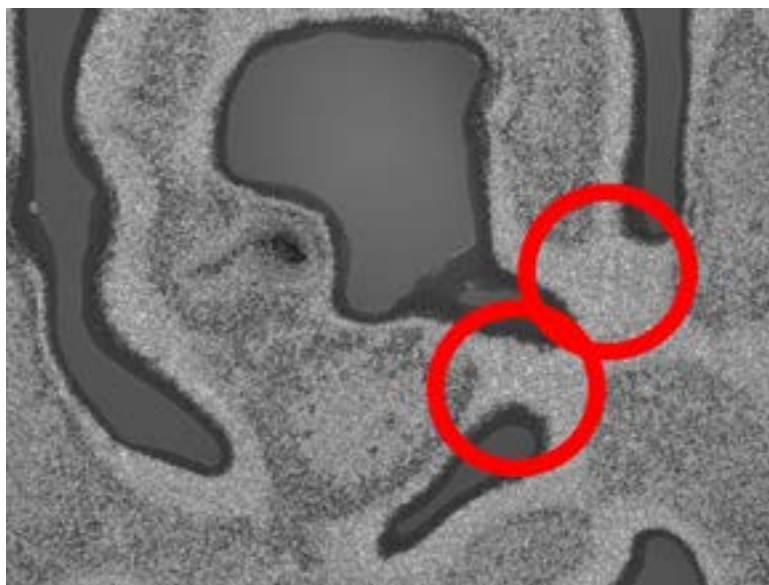


Figure 3. Failure by electrical shorts—poor resolution.

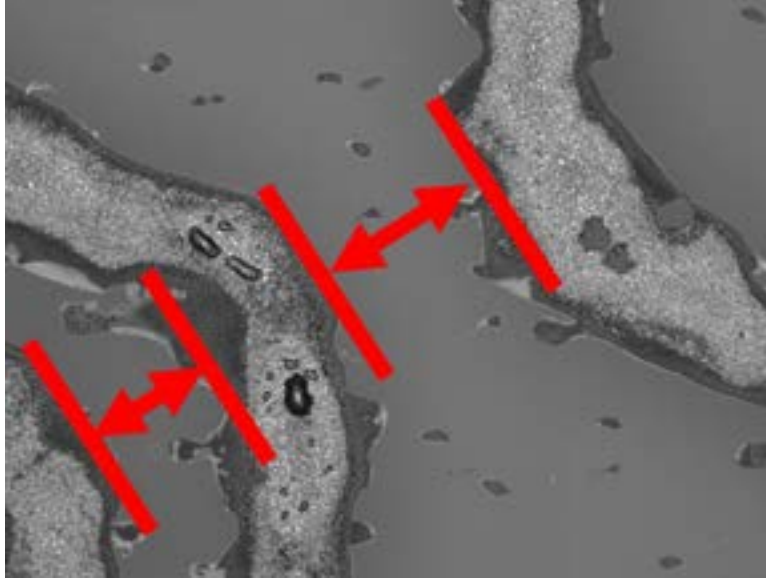


Figure 4. Failure by overspray and inconsistent electrode spacing.

After the first round of testing, the honeycomb pattern was selected as the best candidate for an additively manufactured humidity sensor. The pattern was then designed with different numbers of honeycombs to see if that would vary the sensor's ability to perform correctly. These two variations were affectionately called 'Big Honey' and 'Little Honey.'

In the final optimization of the honeycomb design, the layout was scaled up and down to three target electrode spacings for testing—275  $\mu$ , 350  $\mu$ , and 400  $\mu$ . Using the printer's Graphical User Interface (GUI), various print settings were chosen, such as number of ink layers, which inkjets to use, cartridge and platen heights, and temperatures. Through extensive trial and error, the optimal print settings were found such that the prints came out with high resolution. Frequently, the cartridges were replaced or refilled, so the inkjets had to be checked with the camera for proper jetting. The ink is piezoelectric, so the voltages for each nozzle could be adjusted to cause the ink to jet in different volumes (or different-sized droplets).

### 3.2 Build

In constructing a quality print, the inkjet setting calibrations had to be varied. Printing variables to consider included substrate thickness, jet voltages, number of ink layers, the height of the cartridge, amount of jets used, and platen temperature. Some of the settings and their respective results are shown in table 1.



Table 1. Example print settings chart.

| Inkjet Setting  |                               |       |       |                       |      |                  |                                      |
|-----------------|-------------------------------|-------|-------|-----------------------|------|------------------|--------------------------------------|
| Substrate Glass | Substrate Thickness (Microns) | Volts | Layer | Cartridge Height (mm) | Jets | Temperature (°C) | Results                              |
| Quartz          | 1,000                         | 17    | 1     | 1                     | 4    | 33               | No                                   |
| Quartz          | 1,000                         | 17    | 1     | 1.15                  | 4    | 33               | No                                   |
| Quartz          | 1,000                         | 17    | 1     | 1.15                  | 6    | 33               | Ok                                   |
| Quartz          | 1,000                         | 17    | 1     | 1.1                   | 6    | 33               | Good, no blending in gap             |
| Big quartz      | 1,700                         | 17    | 1     | 1.3                   | 5    | 33               | Good                                 |
| Big quartz      | 1,700                         | 16    | 2     | 1.35                  | 5    | 33               | Minimum overspray through            |
| Big quartz      | 1,700                         | 16    | 2     | 1                     | 9    | 33               | Good                                 |
| Big quartz      | 1,700                         | 17    | 3     | 0.5                   | 9    | 33               | Too thick                            |
| Big quartz      | 1,700                         | 16    | 1     | 0.5                   | 9    | 33               | Good                                 |
| Quartz          | 1,000                         | 16    | 2     | 0.9                   | 5    | 50               | Great and clean                      |
| Quartz          | 1,000                         | 17    | 2     | 0.9                   | 5    | 50               | Good, minimum fuzz                   |
| Quartz          | 1,000                         | 19    | 2     | 0.9                   | 5    | 50               | Fuzzy                                |
| Quartz          | 1,000                         | 16    | 2     | 0.8                   | 5    | 50               | Two lines that overspray through gap |

The inkjet printer has 16 ports that allows ink to jet through. The built-in camera viewer, known as drop watcher, allows for the viewing of each port to determine if any are malfunctioning or are blocked. (See fig. 5.) An important consideration is that the higher the jetting voltage, the faster the inks are jetted out, resulting in overspray of ink, which leads to poor quality resolutions. If the voltage is too low, printing will result in inconsistent electrode spacing and insufficient ink deposition, leading to an electrical open.

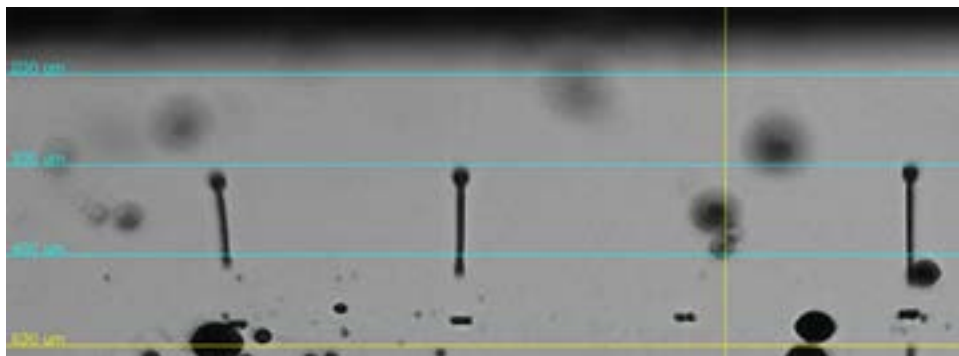


Figure 5. Drop watcher screenshot.

After the Dimatix inkjet printer setup was completed, the electrode pattern was printed on quartz substrate using conductive ink. An example is shown in figure 6. Once completed and inspected (fig. 7), the ink was then sintered in an eight-zone furnace at up to 850 °C. Using an ultra-violet lamp to sinter the ink was also attempted but tended to result in an uneven curing of the ink.

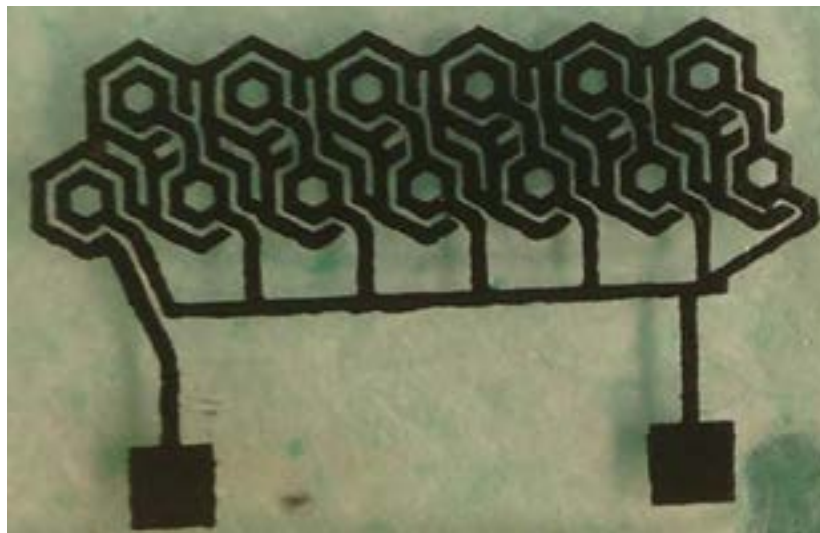


Figure 6. Completed print (fresh ink).

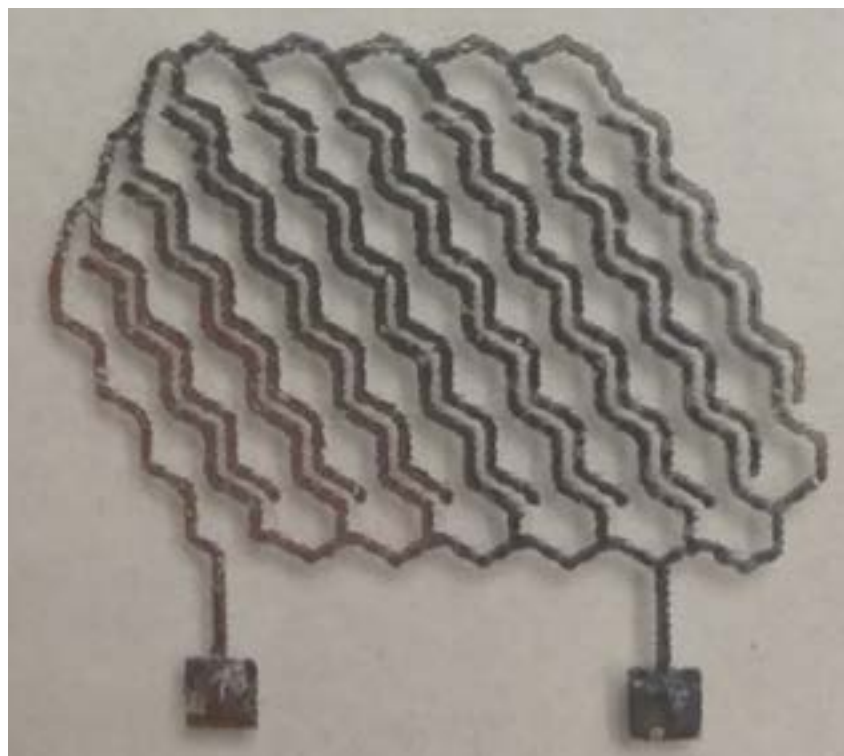


Figure 7. Post-sintering electrode.

After the ink was sintered and the electrodes were inspected for electrical shorts, a dielectric material was screen printed over the electrode pattern, and the entire sensor was post-processed in the burnout furnaces. The process of screen printing the dielectric material was carried out one to three times, depending on how many layers of dielectric was desired. Once the dielectric was completed (fig. 8), the sensor was ready for testing.

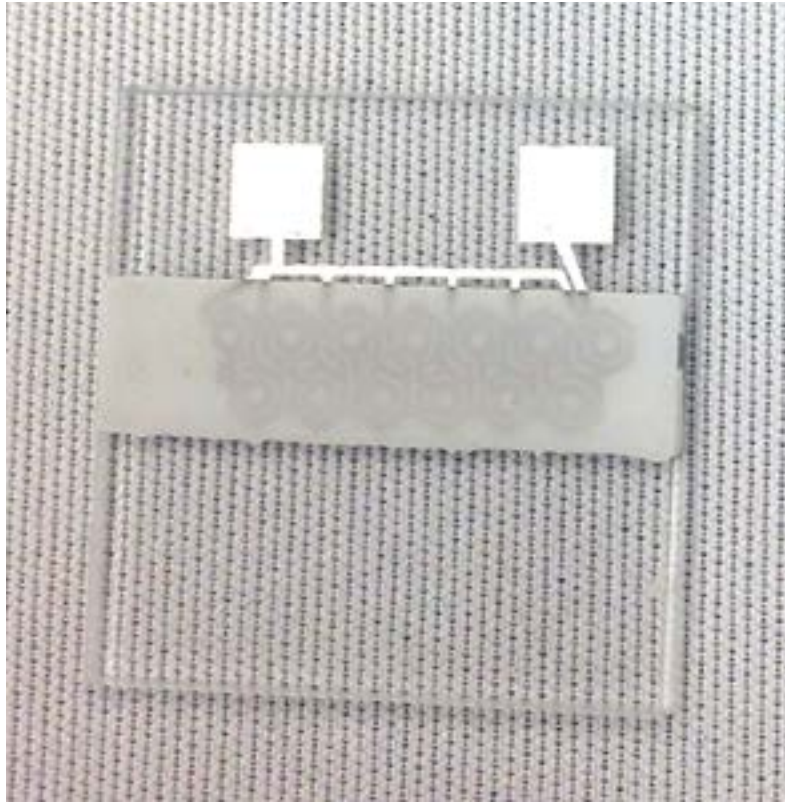


Figure 8. Example of completed sensor.

In addition to manufacturing working humidity sensors, packaging designs for the sensor were also considered in the event that the design was to ever be used outside of NASA in a consumer application. The first step in package design was to create a holder for the sensor that also placed the wire leads onto the sensor's pads. The design shown in figure 9 was created to serve this initial purpose.

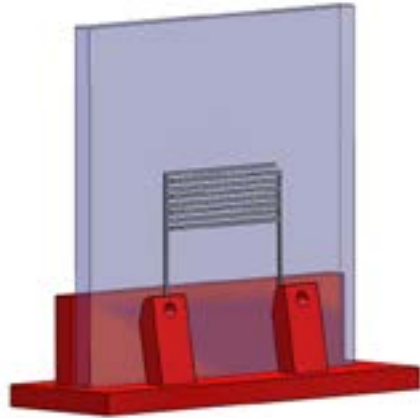


Figure 9. Initial house design.

This design worked well with the exception of the pressure that the base put on the quartz to contact the lead actually would scratch and wear the sensor pads. Additional bases (fig. 10) were then designed to overcome this issue.

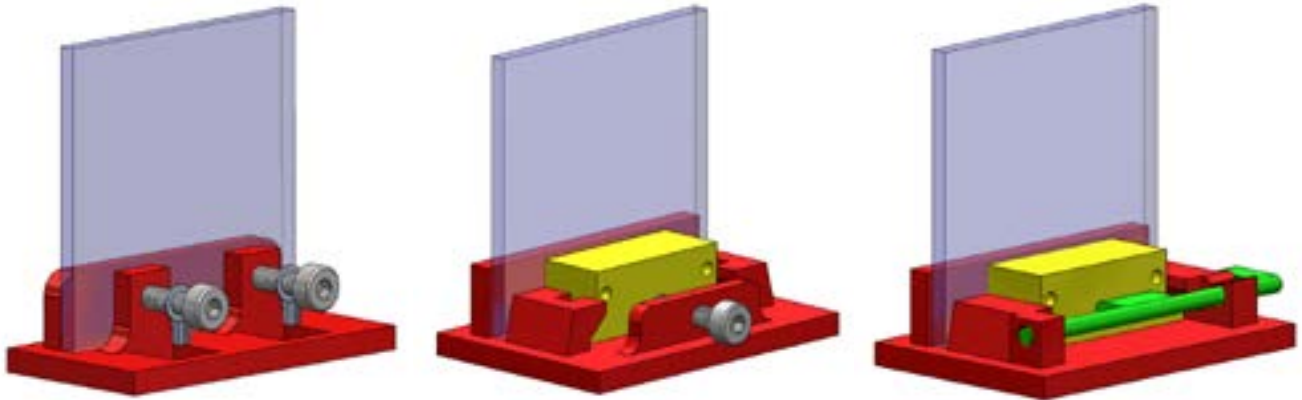


Figure 10. Additional base designs.

All the designs were printed and tested, and each had their own advantages and disadvantages. Additionally, the base could be fitted with a sensor grille to prevent people or objects from coming in contact and damaging the sensor (fig. 11). These packages could eventually be used to create a ‘plug and play’ style humidity sensor for commercial applications.

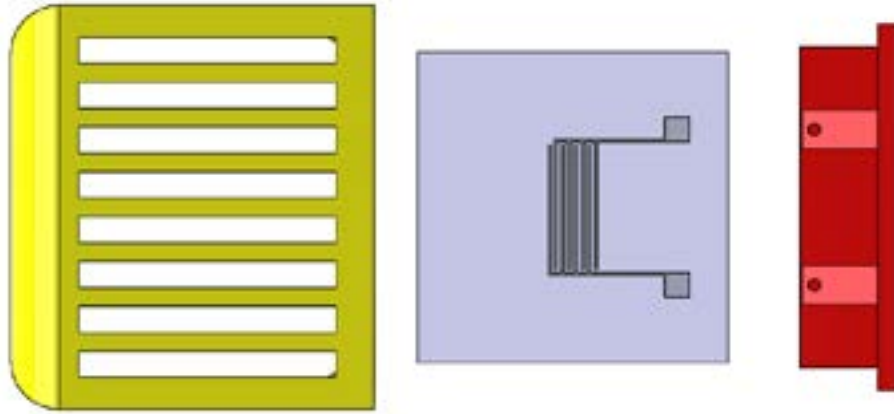


Figure 11. Sensor grille.

### 3.3 Test

The sensors capacitance (saturation range) was observed real time on an Agilent precision inductance, capacitance, and resistance meter from a short breath blown directly onto the sensor. Sensor recovery response time was observed by visually determining the slope of the capacitance as the sensor recovered to its initial value. After this empirical testing was performed with the different electrode patterns, the data was compiled into a table to be compared. Table 2 shows that the honeycomb pattern excelled in every category.

Table 2. Initial test results.

| Design      | Shortly After Breath | Several Minutes After Breath | Capacitance Range |
|-------------|----------------------|------------------------------|-------------------|
| Spiral      | Quick to respond     | Slow to return to nominal    | Large range       |
| Rectilinear | Quick to respond     | Remains saturated            | Large range       |
| Zigzag      | Slow to respond      | Quick to return to nominal   | Small range       |
| Honeycomb   | Quick to respond     | Quick to return to nominal   | Large range       |

Thus, the honeycomb electrode pattern was selected as the best candidate for an additively manufactured humidity sensor, because of its ability to quickly return to the nominal value after an increase in humidity. As shown in table 2, the other designs failed to match the advantages of the honeycomb design because they were either too slow to respond initially or too slow to return from saturation.

Once the pattern was chosen, two variations of the honeycomb were printed. One was printed with only a few large honeycombs, and the other with several smaller honeycombs. These were both tested using the same method as the initial round of testing. The results are shown in table 3. After testing, it was found that the bigger honeycomb produced more desirable results, and thus it was chosen.

Table 3. Second round of testing results.

| Comparing Small and Big HC |               |                  |                  |                   |                   |
|----------------------------|---------------|------------------|------------------|-------------------|-------------------|
| Name                       | Distance (mm) | Electrodes Layer | Dielectric Layer | CAP. Range Test_1 | CAP. Range Test_2 |
| SHC1                       | 0.275         | 2                | 1                | 1–20 nF           | 1–20 nF           |
| SHC2                       | 0.275         | 2                | 1                | 700 pF–13 nF      | 700 pF–16 nF      |
| BHC1                       | 0.275         | 2                | 1                | 750 pF–40 nF      | 800 pF–40 nF      |
| BHC2                       | 0.275         | 2                | 1                | 560 pF–20 nF      | 560 pF–50 nF      |

For the third and final round of sensor testing, it was decided that the electrode thickness and spacing should be tested. In addition, a constant-humidity chamber was created using a stirring plate, a saturated sodium chloride (NaCl) solution, and a flask with a stopper. The chamber used for this portion of testing is shown in figure 12. Ionic salt solutions are often used to test humidity sensors because their partial pressure of moisture produces very predictable humidity levels. Therefore, this method was chosen for testing the design variations for its consistency. Saturated NaCl solutions at 20 °C are expected to produce relative humidity conditions of approximately  $75.47 \pm 0.14\%$ .<sup>4</sup> The sensors were placed in the chamber with this solution and were suspended above the solution where the humidity was constant. The solution was stirred to prevent stratification of the water vapor above the solution. The sensors were observed during initial exposure to the humidity and again during the recovery period when they were taken out of the flask. Equation (2) is the net ionic equation:





Figure 12. Humidity chamber setup.

## 4. RESULTS

Due to the favorable performance of the big honeycomb (BHC) pattern, its design was then varied in terms of changing the spacing between the electrodes. Additionally, the number of dielectric layers was tested at the same time. Sensors with three different spacing by three different amounts of dielectric layers resulted in nine different sensors being tested with the salt solution method. As shown in figure 13, the large honeycomb pattern with 0.35-mm spacing between the electrodes (BHC\_350\_2) approaches the highest value of capacitance, resulting in the widest range of saturation in an hour timeframe. Complete recovery of the sensor is achieved in the same time-frame yielding a printed functional sensor that saturates and recovers as expected (fig. 14).

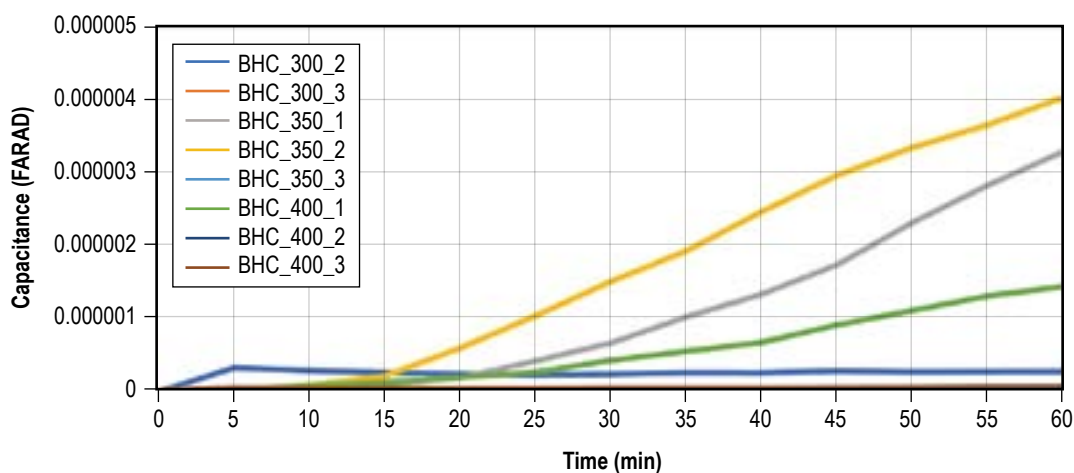


Figure 13. Capacitance testing.



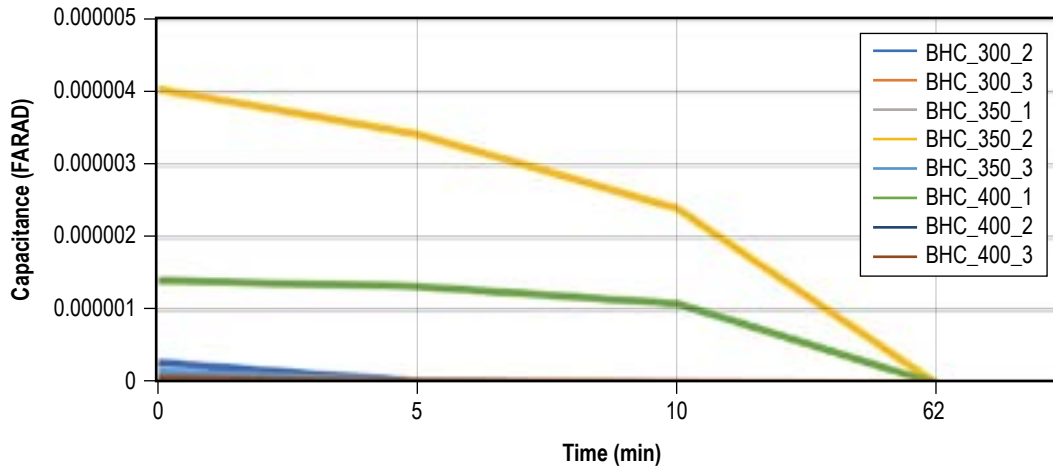


Figure 14. Recovery.

By varying the quantity of printed dielectric layers of the 0.35-mm BHC, the density and porosity of the dielectric between the electrodes change, resulting in varying capacitances. Figure 15 indicates an ideal thickness range around two layers for the highest capacitance. As seen in the figure, three dielectric layers decrease porosity to the point where no moisture is allowed to enter the cross-sectional region between the electrodes. The sensor with one dielectric layer exhibits incompletely filled volume and porosity of dielectric between the electrodes; therefore, the cross-sectional area between the plates is decreased, and a lower capacitance range is the result.

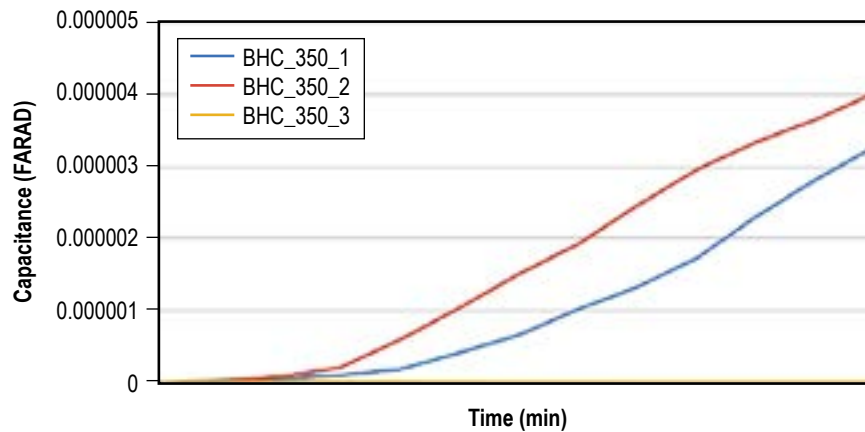


Figure 15. BHC\_dielectric comparison.

According to Adafruit Industries, Honeywell, and Texas Instruments, the expected response time for a capacitive sensor on the market today is 5–30 s for a 63% step change in  $RH$ .<sup>5–7</sup> Honeywell reported a 15-s response time in slow-moving air at 25° C with their thermoset polymer  $RH$  sensors. Capacitive sensors usually work up to about 200 °C, while a moisture sensor specifically should be used between 10 °C and 70 °C. The optimal range is from 5–80%  $RH$ , which yields capacitance values in the microfarad range. The honeycomb design easily met response standards of the commercially available humidity sensors observed, taking less than 30 s to reach a 63% step change when tested at 20 °C.

## 5. CONCLUSION

The large honeycomb pattern, with 0.35-mm spacing between the electrodes and two layers of dielectric, was found to produce an additively manufactured humidity sensor comparable to those that are commercially available. In addition to being an effective sensor, this design allows for the on-demand production of the sensor in a space-based manufacturing environment and allows the sensor to be mass-produced with minimal human input. Additionally, a packaging design was developed in the event that the sensor be made and sold by private industry as a 'plug and play' style of sensor.

## 6. FUTURE GOALS

Future goals of this project would be to test the sensor over greater ranges of both humidity and temperature, as well as known values of humidity, in order to develop a humidity to capacitance curve to calibrate the sensor. Ideally, the integration of an analog front-end signal conditioning chip could be added to the back of the sensor to convert measurements into known formats for use in various instrumentation systems and networks. The signal conditioning chip could also support direct output to a display, providing a standalone sensor product for measuring humidity. The sensor could also be further developed to record the response of the capacitance to other variables such as pressure, temperature, gases, aerosols, radiation, and magnetism to explore the possibility of sensing other phenomena with the in-house-developed sensor. Finally, a future goal would be to further streamline the manufacturing process to allow all printing and integration of the sensor directly into materials or components.

Additionally, the sensor could be refined to be used in the following potential applications:

- detection and characterization of aerosols,
- gas detection systems,
- liquid level sensing,
- wearable environmental sensors in smart watches,
- smart packaging and product tampering detection,
- embedded moisture detection in composites, ceramics, and polymers,
- moisture detection in gasoline and fuels,
- environmental monitoring and control,
- monitoring humidity in oil refineries,
- smart air conditioning and refrigeration systems,
- moisture intrusion detection in electronic devices, and
- humidity monitoring for tobacco storage.

## REFERENCES

1. Webster, J.G.: *The Measurement, Instrumentation and Sensors Handbook*, CRC Press, LLC, Boca Raton, FL, pp. 6-1–6-156, 1999.
2. Bakhoun, E.G.: *Micro- and Nano-Scale Sensors and Transducers*, CRC Press, LLC, Boca Raton, FL, pp. 87–101, 2015.
3. Rolin, T.D.; and Hill, C.W.: U.S. Patent No. US9745481 B2, August 29, 2017.
4. Rolin, T.D. and Small, I.K.: US 9987658 B1, June 5, 2018.
5. OMEGA: “Equilibrium Relative Humidity Saturated Salt Solutions,” <<https://www.omega.com/temperature/z/pdf/z103.pdf>>, 2018.
6. Adafruit Industries: “DHT11, DHT22 and AM2302 Sensors,” Adafruit Learning System, <<https://cdn-learn.adafruit.com/downloads/pdf/dht.pdf>>, 2018.
7. Honeywell: “Honeywell HumidIcon™ Digital Temperature/Humidity Sensors,” <<https://sensing.honeywell.com/hih8000-datasheet-009075-7-en.pdf>>, 2015.

| REPORT DOCUMENTATION PAGE  |                      |  | Form Approved<br>OMB No. 0704-0188  |                               |
|--|----------------------|--|---|-------------------------------|
| <p>The public reporting burden for this collection of information is estimated to average 1 hour per response, including the time for reviewing instructions, searching existing data sources, gathering and maintaining the data needed, and completing and reviewing the collection of information. Send comments regarding this burden estimate or any other aspect of this collection of information, including suggestions for reducing this burden, to Department of Defense, Washington Headquarters Services, Directorate for Information Operation and Reports (0704-0188), 1215 Jefferson Davis Highway, Suite 1204, Arlington, VA 22202-4302. Respondents should be aware that notwithstanding any other provision of law, no person shall be subject to any penalty for failing to comply with a collection of information if it does not display a currently valid OMB control number.</p> <p><b>PLEASE DO NOT RETURN YOUR FORM TO THE ABOVE ADDRESS.</b></p> |                      |  |   |                               |
| 1. REPORT DATE (DD-MM-YYYY)<br>01-03-2019  |                      | 2. REPORT TYPE<br>Technical Memorandum |   | 3. DATES COVERED (From - To)  |
| 4. TITLE AND SUBTITLE<br><br>Development of an Additively Manufactured Capacitive Humidity Sensor for the International Space Station  |                      |  | 5a. CONTRACT NUMBER   |                               |
|  |                      |  | 5b. GRANT NUMBER  |                               |
|  |                      |  | 5c. PROGRAM ELEMENT NUMBER  |                               |
| 6. AUTHOR(S)<br><br>K.T. Chang, A.T. Rogers, J.A. Colby, F.V. Thompson, and T.D. Rolin   |                      |  | 5d. PROJECT NUMBER  |                               |
|  |                      |  | 5e. TASK NUMBER   |                               |
|  |                      |  | 5f. WORK UNIT NUMBER  |                               |
| 7. PERFORMING ORGANIZATION NAME(S) AND ADDRESS(ES)<br>George C. Marshall Space Flight Center<br>Huntsville, AL 35812   |                      |  | 8. PERFORMING ORGANIZATION REPORT NUMBER<br><br>M-1482                      |                               |
| 9. SPONSORING/MONITORING AGENCY NAME(S) AND ADDRESS(ES)<br>National Aeronautics and Space Administration<br>Washington, DC 20546-0001  |                      |  | 10. SPONSORING/MONITOR'S ACRONYM(S)<br>NASA                                 |                               |
|  |                      |  | 11. SPONSORING/MONITORING REPORT NUMBER<br>NASA/TM-2019-220131              |                               |
| 12. DISTRIBUTION/AVAILABILITY STATEMENT<br>Unclassified-Unlimited<br>Subject Category 33<br>Availability: NASA STI Information Desk (757-864-9658)   |                      |  |   |                               |
| 13. SUPPLEMENTARY NOTES<br>Prepared by EEE Parts Packaging & Parts Engineering and Analysis Team, Parts, Packaging, and Fabrication Branch, and Electrical Integration and Fabrication Division, Space Systems Department  |                      |  |   |                               |
| 14. ABSTRACT<br><br>This project focuses on highlighting the growing need for alternative on-demand resupply of failed electronic components in space as NASA continues to pursue deep space exploration. In this research, we explore the use of a tabletop Dimatix materials printer as a potentially scalable process to iteratively improve the performance of an in-house developed capacitive humidity sensor. We used inkjet printing technology to digitally iterate through various sensor electrode configurations to observe the differences in performance of a fully printed solid-state humidity sensor. Results proved that the fully printed large honeycomb pattern performed comparably well with commercial humidity sensors available today.   |                      |  |   |                               |
| 15. SUBJECT TERMS<br>electrical, electronic, electromechanical parts, additive manufacturing, printed electronics, nanomaterials, solid-state, inkjet printing, humidity sensor, moisture sensor   |                      |  |   |                               |
| 16. SECURITY CLASSIFICATION OF:  |                      |  | 17. LIMITATION OF ABSTRACT<br><br>UU  | 18. NUMBER OF PAGES<br><br>32 |
| a. REPORT<br><br>U   | b. ABSTRACT<br><br>U | c. THIS PAGE<br><br>U                  |   |                               |
|  |                      |  | 19b. TELEPHONE NUMBER (Include area code)<br>STI Help Desk at: 757-864-9658 |                               |



National Aeronautics and  
Space Administration  
IS02  
**George C. Marshall Space Flight Center**  
Huntsville, Alabama 35812