



**University of Dundee**

### **Antidepressants versus placebo for depression in primary care**

Arroll, Bruce; Elley, C. Raina; Fishman, Tana; Goodyear-Smith, Felicity A.; Kenealy, Tim; Blashki, Grant; Kerse, Ngaire; MacGillivray, Stephen

*Published in:*  
Cochrane Database of Systematic Reviews

*DOI:*  
[10.1002/14651858.CD007954](https://doi.org/10.1002/14651858.CD007954)

*Publication date:*  
2009

*Document Version*  
Publisher's PDF, also known as Version of record

[Link to publication in Discovery Research Portal](#)

*Citation for published version (APA):*  
Arroll, B., Elley, C. R., Fishman, T., Goodyear-Smith, F. A., Kenealy, T., Blashki, G., ... MacGillivray, S. (2009). Antidepressants versus placebo for depression in primary care. *Cochrane Database of Systematic Reviews*, 2009(3), [CD007954]. [10.1002/14651858.CD007954](https://doi.org/10.1002/14651858.CD007954)

#### **General rights**

Copyright and moral rights for the publications made accessible in Discovery Research Portal are retained by the authors and/or other copyright owners and it is a condition of accessing publications that users recognise and abide by the legal requirements associated with these rights.

- Users may download and print one copy of any publication from Discovery Research Portal for the purpose of private study or research.
- You may not further distribute the material or use it for any profit-making activity or commercial gain.
- You may freely distribute the URL identifying the publication in the public portal.

#### **Take down policy**

If you believe that this document breaches copyright please contact us providing details, and we will remove access to the work immediately and investigate your claim.

# Antidepressants versus placebo for depression in primary care (Review)

Arroll B, Elley CR, Fishman T, Goodyear-Smith FA, Kenealy T, Blashki G, Kerse N,  
MacGillivray S



**THE COCHRANE  
COLLABORATION®**

This is a reprint of a Cochrane review, prepared and maintained by The Cochrane Collaboration and published in *The Cochrane Library* 2009, Issue 3

<http://www.thecochranelibrary.com>



## TABLE OF CONTENTS

HEADER . . . . .	1
ABSTRACT . . . . .	1
PLAIN LANGUAGE SUMMARY . . . . .	2
BACKGROUND . . . . .	2
OBJECTIVES . . . . .	3
METHODS . . . . .	3
Figure 1. . . . .	6
RESULTS . . . . .	6
DISCUSSION . . . . .	9
AUTHORS' CONCLUSIONS . . . . .	11
ACKNOWLEDGEMENTS . . . . .	11
REFERENCES . . . . .	11
CHARACTERISTICS OF STUDIES . . . . .	14
DATA AND ANALYSES . . . . .	28
Analysis 1.1. Comparison 1 TCAs versus placebo, Outcome 1 Depression symptoms at post-treatment. . . . .	30
Analysis 1.2. Comparison 1 TCAs versus placebo, Outcome 2 Clinical response at post-treatment. . . . .	31
Analysis 1.3. Comparison 1 TCAs versus placebo, Outcome 3 Occurrence of adverse effects at post-treatment. . . . .	32
Analysis 1.4. Comparison 1 TCAs versus placebo, Outcome 4 Withdrawal from trials at post-treatment. . . . .	33
Analysis 1.5. Comparison 1 TCAs versus placebo, Outcome 5 Depression symptoms: 1-4 week timepoints. . . . .	35
Analysis 1.6. Comparison 1 TCAs versus placebo, Outcome 6 Clinical response: 1-4 week timepoints. . . . .	37
Analysis 1.7. Comparison 1 TCAs versus placebo, Outcome 7 Depression symptoms: dosage of TCAs. . . . .	38
Analysis 1.8. Comparison 1 TCAs versus placebo, Outcome 8 Clinical response: dosage of TCAs. . . . .	39
Analysis 1.9. Comparison 1 TCAs versus placebo, Outcome 9 Depression symptoms: UK vs USA/European-based studies. . . . .	40
Analysis 1.10. Comparison 1 TCAs versus placebo, Outcome 10 Clinical response: UK vs USA/European-based studies. . . . .	41
Analysis 1.11. Comparison 1 TCAs versus placebo, Outcome 11 Depression symptoms: approximated vs non-approximated data. . . . .	42
Analysis 1.12. Comparison 1 TCAs versus placebo, Outcome 12 Clinical response: approximated vs non-approximated data. . . . .	43
Analysis 1.13. Comparison 1 TCAs versus placebo, Outcome 13 Depression symptoms: high vs low quality studies. . . . .	44
Analysis 1.14. Comparison 1 TCAs versus placebo, Outcome 14 Clinical response: high vs low quality studies. . . . .	45
Analysis 1.15. Comparison 1 TCAs versus placebo, Outcome 15 Depression symptoms: major depression diagnosis. . . . .	46
Analysis 1.16. Comparison 1 TCAs versus placebo, Outcome 16 Depression symptoms: use of different depression scales. . . . .	47
Analysis 1.17. Comparison 1 TCAs versus placebo, Outcome 17 Clinical response: greatly improved/remission. . . . .	48
Analysis 1.18. Comparison 1 TCAs versus placebo, Outcome 18 Depression symptoms: 50% or more GP assessors. . . . .	49
Analysis 1.19. Comparison 1 TCAs versus placebo, Outcome 19 Clinical response: 50% or more GP assessors. . . . .	50
Analysis 1.20. Comparison 1 TCAs versus placebo, Outcome 20 Depression symptoms: studies with no competing interest. . . . .	51
Analysis 1.21. Comparison 1 TCAs versus placebo, Outcome 21 Clinical response: studies with no competing interest. . . . .	52
Analysis 2.1. Comparison 2 SSRIs versus placebo, Outcome 1 Clinical response at post-treatment. . . . .	52
Analysis 2.2. Comparison 2 SSRIs versus placebo, Outcome 2 Occurrence of adverse effects at post-treatment. . . . .	53
Analysis 2.3. Comparison 2 SSRIs versus placebo, Outcome 3 Withdrawal from trials at post-treatment. . . . .	54
Analysis 2.4. Comparison 2 SSRIs versus placebo, Outcome 4 Clinical response: UK vs USA/European-based studies. . . . .	55
Analysis 2.5. Comparison 2 SSRIs versus placebo, Outcome 5 Clinical response: high quality studies. . . . .	56
Analysis 2.6. Comparison 2 SSRIs versus placebo, Outcome 6 Clinical response: major depression diagnosis. . . . .	56
Analysis 2.7. Comparison 2 SSRIs versus placebo, Outcome 7 Depression symptoms: use of Montgomery-Asberg scale. . . . .	57
Analysis 2.8. Comparison 2 SSRIs versus placebo, Outcome 8 Clinical response: use of Montgomery-Asberg scale. . . . .	58
ADDITIONAL TABLES . . . . .	58
APPENDICES . . . . .	61
HISTORY . . . . .	62
CONTRIBUTIONS OF AUTHORS . . . . .	63

DECLARATIONS OF INTEREST . . . . .	63
SOURCES OF SUPPORT . . . . .	63
INDEX TERMS . . . . .	63

[Intervention Review]

# Antidepressants versus placebo for depression in primary care

Bruce Arroll<sup>1</sup>, C Raina Elley<sup>1</sup>, Tana Fishman<sup>1</sup>, Felicity A Goodyear-Smith<sup>1</sup>, Tim Kenealy<sup>1</sup>, Grant Blashki<sup>2</sup>, Ngair Kerse<sup>1</sup>, Stephen MacGillivray<sup>3</sup>

<sup>1</sup>Department of General Practice and Primary Health Care, University of Auckland, Auckland, New Zealand. <sup>2</sup>Dept General Practice, University of Melbourne, Melbourne, Australia. <sup>3</sup>Tayside Institute for Health Studies, University of Abertay, Dundee, UK

Contact address: Bruce Arroll, Department of General Practice and Primary Health Care, University of Auckland, Private Bag 92019, Auckland, New Zealand. [b.arroll@cochraneprimarycare.org](mailto:b.arroll@cochraneprimarycare.org). [b.arroll@auckland.ac.nz](mailto:b.arroll@auckland.ac.nz).

**Editorial group:** Cochrane Depression, Anxiety and Neurosis Group.

**Publication status and date:** New, published in Issue 3, 2009.

**Review content assessed as up-to-date:** 23 September 2007.

**Citation:** Arroll B, Elley CR, Fishman T, Goodyear-Smith FA, Kenealy T, Blashki G, Kerse N, MacGillivray S. Antidepressants versus placebo for depression in primary care. *Cochrane Database of Systematic Reviews* 2009, Issue 3. Art. No.: CD007954. DOI: 10.1002/14651858.CD007954.

Copyright © 2009 The Cochrane Collaboration. Published by John Wiley & Sons, Ltd.

## ABSTRACT

### Background

Concern has been expressed about the relevance of secondary care studies to primary care patients specifically about the effectiveness of antidepressant medication. There is a need to review the evidence of only those studies that have been conducted comparing antidepressant efficacy with placebo in primary care-based samples.

### Objectives

To determine the efficacy and tolerability of antidepressants in patients (under the age of 65 years) with depression in primary care.

### Search methods

All searches were conducted in September 2007.

The Cochrane Depression, Anxiety and Neurosis Group (CCDAN) Controlled Trials Register was searched, together with a supplementary search of MEDLINE, PsycINFO, EMBASE, LILACS, CINAHL and PSYINDEX. Abstracts of all possible studies for inclusion were assessed independently by two reviewers. Further trials were sought through searching the reference lists of studies initially identified and by scrutinising other relevant review papers. Selected authors and experts were also contacted.

### Selection criteria

Studies were selected if they were randomised controlled trials of tricyclic antidepressants (TCAs) or selective serotonin reuptake inhibitors (SSRIs) versus placebo in adults. Older patients (over 65 years) were excluded. Patients had to be recruited from a primary care setting. For continuous outcomes the Hamilton Depression scale of the Montgomery Asberg Scale was required.

### Data collection and analysis

Data were extracted using data extraction forms by two reviewers independently, with disagreements resolved by discussion. A similar process was used for the validity assessment. Pooling of results was done using Review Manager 5. The primary outcome was depression reduction, based on a dichotomous measure of clinical response, using relative risk (RR), and on a continuous measure of depression symptoms, using the mean difference (MD), with 95% confidence intervals (CI).

---

**Antidepressants versus placebo for depression in primary care (Review)**

Copyright © 2009 The Cochrane Collaboration. Published by John Wiley & Sons, Ltd.

1

## Main results

There were fourteen studies (16 comparisons) with extractable data included in the review, of which ten studies examined TCAs, two examined SSRIs and two included both classes, all compared with placebo. The number of participants in the intervention groups was 1364 and in the placebo groups 919. Nearly all studies were of short duration, typically 6-8 weeks. Pooled estimates of efficacy data showed an RR of 1.24, 95% CI 1.11-1.38 in favour of TCAs against placebo. For SSRIs this was 1.28, 95% CI 1.15 to 1.43. The numbers needed to treat (NNT) for TCAs ranged from 7 to 16 {median NNT 9} patient expected event rate ranged from 63% to 26% respectively) and for SSRIs from 7 to 8 {median NNT 7} (patient expected event rate ranged from 48% to 42% respectively). The numbers needed to harm (NNH for withdrawal due to side effects) ranged from 4 to 30 for TCAs (excluding three studies with no harmful events leading to withdrawal) and 20 to 90 for SSRIs.

## Authors' conclusions

Both TCAs and SSRIs are effective for depression treated in primary care.

## PLAIN LANGUAGE SUMMARY

### Antidepressants versus placebo for depression in primary care

Depression in the primary care setting is very common. However, most systematic reviews of antidepressant treatment have included trials conducted in secondary care settings. There has been doubt about the effectiveness of antidepressants in primary care, and hence the impetus to do this review. Through extensive searches of the literature we found 14 studies conducted in adults (not the elderly) in primary care setting, in which tricyclic antidepressants (TCAs) or selective serotonin reuptake inhibitors (SSRIs) were compared against a placebo control group in the treatment of depression. The results showed that both TCAs and SSRIs were effective for depression. Most of the studies were supported by funds from pharmaceutical companies and were of short duration. There appeared to be more adverse effects with TCAs than with SSRIs, however rates of withdrawal from study medication due to adverse effects were very similar between the two antidepressant classes. Adverse effects not leading to medication cessation seemed to be more common with TCAs than SSRIs.

## BACKGROUND

### Description of the condition

Depression is very common in primary care, with a 12-month prevalence of 18.1% (including dysthymia 0.8%). There is considerable overlap with anxiety and substance use (MAGPIE 2003). Depression is also common in the community, with a 12-month prevalence of 7.1% (Oakley-Browne 2006).

It is a paradox that whilst the vast majority of patients with clinical depression are dealt with in primary care, most of the research findings upon which decisions are made have involved secondary care patients. This is important because research suggests that patients with depressive disorders in primary care have different aetiology, pathophysiology and natural history from those of psychiatric inpatients or outpatients (Arya 1999; Suh 1999). Often, depressed primary care patients present with somatic symptoms, which include gastrointestinal, skeletal muscle, and cardiovascu-

lar complaints, as opposed to describing non-somatic criteria for depression.

### Description of the intervention

The most commonly used antidepressants in the treatment of depression in primary care are tricyclic antidepressants (TCAs) and selective serotonin reuptake inhibitors (SSRIs). It is generally thought that TCAs act by inhibiting the re-uptake by nerve cells of the neurotransmitters norepinephrine, dopamine, or serotonin. Tricyclics may have an affinity for muscarinic and histamine H1 receptors. Norepinephrine and dopamine are considered stimulatory neurotransmitters, but tricyclic antidepressants also increase the effects H1 histamine, and hence have sedative effects. SSRIs are a class of antidepressants used in the treatment of depression and anxiety disorders. SSRIs increase the level of the serotonin by inhibiting its reuptake into the presynaptic (brain) cell, increasing

the level of serotonin available to bind to the postsynaptic receptor.

Doubts about the effectiveness of antidepressant medication and other therapies such as cognitive therapy may contribute to the variability in primary care management of depression (Jenkins 2001; King 2002). Up to 40% of depressed patients fail to demonstrate a response to first line antidepressant drug treatment (Joffe 1996) and of those that do respond only a proportion will achieve full recovery (APA 1993). One cohort study of primary care patients found 60% of those treated with medication and 50% with milder depression still met the criteria for depression at one year (Goldberg 1998).

### Why it is important to do this review

Recent calls indicate an urgent need to review the evidence of only those studies that have been conducted concerning antidepressant efficacy on primary care based samples (Gill 1997; NCCHTA 2000). Systematic reviews of antidepressant medication often include patients who are seen in outpatient facilities rather than being seen in primary care or at least recruited from primary care (Ellis 2002). Concern has been expressed about the relevance of secondary care studies to primary care patients (NCCHTA 2000; Gill 1997). We are aware of only two published systematic reviews on patients either seen or recruited in primary care. Both compared newer antidepressants with older antidepressants (Mulrow 2000; MacGillivray 2003). The review by Mulrow and colleagues (Mulrow 2000) had a small section on antidepressant drugs versus placebo but reviewed only four studies. The MacGillivray review (MacGillivray 2003) compared SSRIs with TCAs, and hence only commented on relative efficacy. Comparison with placebo is needed to obtain absolute efficacy. A paper version of this Cochrane review was published in 2005 (Arroll 2005). A review of new generation antidepressants to the Food and Drug Administration found that they were only effective with those patients with more severe depression (Kirsch 2008).

These considerations indicate a need to review the evidence of only those studies that have been conducted comparing antidepressant efficacy with placebo on primary care based samples (Gill 1997; NCCHTA 2000).

## OBJECTIVES

The aim of this review was to examine the efficacy and tolerability of antidepressant medication compared with placebo in studies of treating depression in adults aged less than 65 years in primary care.

## METHODS

### Criteria for considering studies for this review

#### Types of studies

Randomised controlled trials only were included. Cross-over trials were not included as the course of depression is neither fluctuating nor rapidly responsive to treatment and hence not considered suitable for this method.

#### Types of participants

To be included in the review studies had to include adults of 18 years or older. Studies with a majority (more than 50%) of participants over 65 years or under 18 years of age were excluded. Patients were required to be recruited from a primary care clinic. The diagnosis of unipolar depression was based on formal diagnostic interviews according to international criteria such as the ICD (International Classification of Disease -WHO) or the DSM (Diagnostic and Statistical Manual American Psychiatric Association). Studies in which GPs thought the patient was depressed, and that the symptoms warranted pharmacological therapy, were also included.

A post hoc decision was made to exclude studies in which participants were diagnosed with co-morbid physical or mental conditions.

#### Types of interventions

##### Intervention

Antidepressants for inclusion in the review were tricyclic antidepressants (TCAs), selective serotonin reuptake inhibitors (SSRIs) or tetracyclic medication (eg Mianserin) that are currently in use in some countries. Tetracyclic medications were included in the TCA group, as their side effect profile is similar to TCAs. Studies were required to be of a duration of at least four weeks. A post hoc decision was made that medication(s) needed to be regarded as in current clinical use (in the view of review authors) to be included in the review.

Studies involving monoamine oxidase inhibitors and serotonin-norepinephrine reuptake inhibitors (SNRIs) were not included in the review. In future updates of the review, a comparison of SNRI medication versus placebo will be included.

##### Main comparisons

1. TCAs versus placebo
2. SSRIs versus placebo

#### Types of outcome measures

Only trials with extractable data were included in the review.

### Primary outcomes

The primary outcome was reduction in depression symptoms, measured in the following ways:

1. Continuous outcomes, reported as reduction in depression symptoms at post-treatment, in terms of validated depression rating scales (the most commonly used were the Hamilton depression rating scale [Hamilton 1960] and the Montgomery-Asberg scale [Montgomery 1979])
2. Dichotomous outcomes, reported as clinical response post-treatment. Outcomes were considered positive for remission where a 50% reduction from initial score or a score of less than 8 on the Hamilton Depression rating scale was achieved. Response ranged from any response (sometimes unspecified) to full remission. A similar approach is used with the Montgomery-Asberg scale. The dichotomous outcomes were needed to generate numbers needed to treat (NNT) values.

### Secondary outcomes

1. Occurrence of adverse effects
2. Withdrawal from trials due to:
  - a) adverse effects
  - b) treatment failure
  - c) any reasons
3. Economic outcomes

### Search methods for identification of studies

#### Electronic searches

An electronic search of the Cochrane Collaboration Depression, Anxiety and Neurosis Controlled Trials Registers (CCDANCTR-Studies, Appendix 1; CCDANCTR-References, Appendix 2) was carried out.

These Registers incorporate results of the CCDAN Group-wide search of MEDLINE, EMBASE, PsycINFO, CINAHL, PSYNDEX and LILACS.

#### Searching other resources

##### Reference lists

Further trials were sought through searching the reference lists of studies initially identified and by scrutinising other relevant review papers.

##### Other sources

Authors of all selected papers were approached and asked if they had or knew of unpublished studies or published studies that we had not found.

### Data collection and analysis

#### Selection of studies

Two of the reviewers (BA and SM) read all the abstracts and decided which were relevant to the review. Where it was unclear from the abstract if the study was relevant to this review a full paper was reviewed

#### Data extraction and management

Review authors independently extracted the data and compared their results. Disagreement on findings were discussed and resolved through discussion. Formal data extraction sheets were not used.

### Assessment of risk of bias in included studies

#### Methodological quality assessment

Assessment of methodological quality was performed using the Quality Rating Scale (Moncrieff 2001) (see Table 1 for a description of each item on the scale). Seven key methodological items from the QRS were also selected. To be a high quality study the total score had to be  $\geq 27$  and to have no zero scores in any of the seven key components of quality (see below). The seven items were chosen as they were considered essential aspects of quality (a score of 0 on any component indicates poor quality for that item, 2 indicates good quality).

##### Seven key QRS components included:

- Item 2 = Adequacy of sample size
- Item 5 = Allocation concealment
- Item 6 = Clear description of treatment
- Item 8 = Representative source of participants
- Item 9 = Use of diagnostic criteria or clear specification of inclusion criteria.
  - Item 15 = Details regarding number and reasons for withdrawal by group.
  - Item 16 = Outcome measures described clearly or use of validated instrument

#### Risk of bias assessment

Item 5 of the QRS, allocation concealment, represented one domain of the Cochrane Risk of Bias tool (Higgins 2008). The Risk of Bias tool covers a total of six domains (sequence generation, allocation concealment, blinding of participants, personnel and assessors, incomplete outcome data, selective outcome reporting and other sources of bias), and is now recommended for assessing risk of bias in studies included in Cochrane reviews. In future updates of this review, studies will be assessed for risk of bias using all domains of this tool.



### Measures of treatment effect

For continuous outcomes, the standardised mean difference (SMD) was used when different depression questionnaires were being used between studies in a comparison, and the mean difference was used when the same questionnaire was being used, together with 95% confidence intervals (CI).

For dichotomous outcomes, a pooled risk ratio (RR) was calculated, together with a 95% CI. When overall results were significant, the number needed to treat (NNT) or harm (NNH) to produce one outcome was calculated by combining the overall risk ratio with an estimate of the prevalence of the event in the control group of the trials.

### Unit of analysis issues

Where one control group and two medications were used in a study, the control group was split in half for both the numerator and the denominator.

### Dealing with missing data

There was no adjustment by the reviewers for intention to treat (ITT) analysis. Unless study authors did an ITT analysis, the analyses were done per protocol.

Continuous outcomes: where values were missing, certain assumptions were made. Where results were not reported in tables or the text but presented as graphs, the values were estimated from reading the graph and included as “approximated” results. The results of this line of sight method was agreed upon by two of the review authors. Where standard errors (SE) or confidence intervals (CIs)

were reported, the SD was calculated from those figures. Where standard deviations (SD) of final results were not stated, and SEs and CIs were also not reported, baseline SDs or the highest SD from all studies reviewed for the same variable and group (intervention or control) was used. For HAMD scores, the highest value for SD for placebo in the TCA studies was 9.6 (Blashki (75mg) 1971) and 7.3 for intervention arms in the TCA studies (Brink 1984). For MADRS scores, the highest values for SDs were 10.3 for the Sertraline arm (Wade 2002), 4.5 for Mianserin arm and 9.1 for placebo (Malt 1999). These were baseline SDs and were used when SDs in other studies were not reported in the corresponding groups.

Dichotomous outcomes: The denominator for incidence of adverse events was the number for which data were collected (i.e. initial drop-outs for which there were no data were not included). However the denominator for incidence of withdrawals for any reason was the number randomised (i.e. including initial drop-outs for which there were no data).

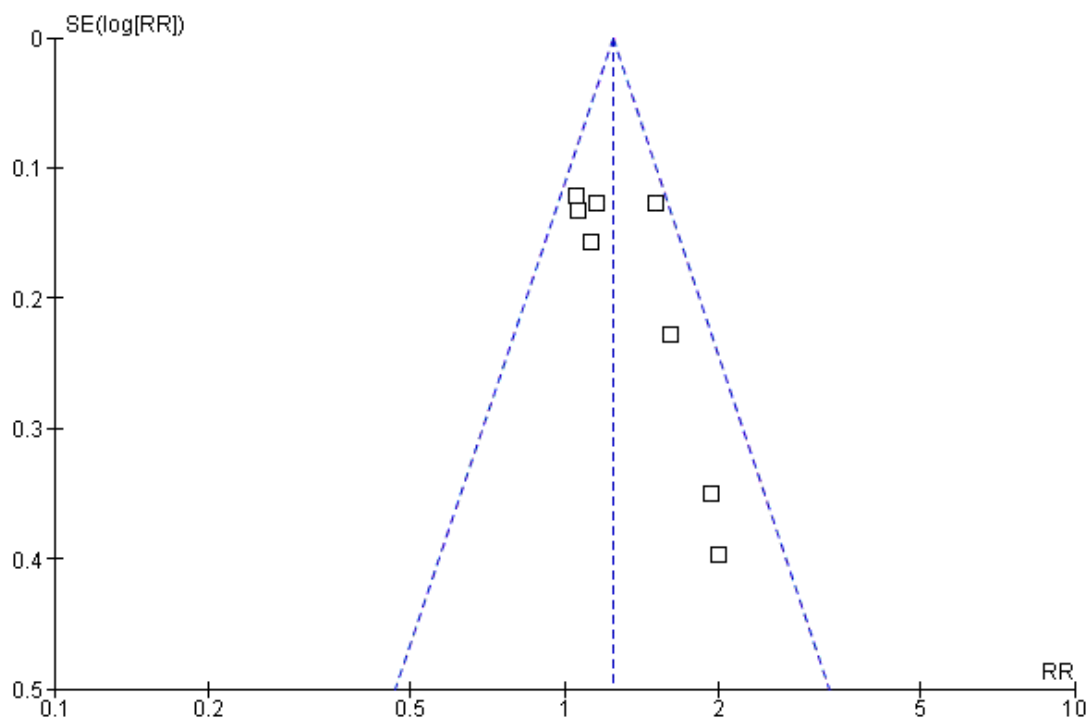
### Assessment of heterogeneity

Statistical heterogeneity was formally tested using the natural approximate chi-square test, with the p-value conservatively set at 0.1. Heterogeneity was also tested using the  $I^2$  statistic, with  $I^2$  values over 50% indicating strong heterogeneity.

### Assessment of reporting biases

Publication bias was assessed using a funnel plot in RevMan 5 (Figure 1).

**Figure 1. Funnel plot of comparison: 1 TCAs versus placebo, outcome: 1.2 Clinical response at post-treatment.**



### Data synthesis

Random effects analysis was used if the  $I^2$  was greater than 50%.

### Subgroup analysis and investigation of heterogeneity

Subgroup analyses were conducted for the following clinical characteristics:

1. Dosage of antidepressant
2. UK based studies vs European and US based studies

### Sensitivity analysis

Sensitivity analyses were performed to test the robustness of results for the following internal validity criteria:

1. Use of approximated data versus non-approximated data
2. High quality ( $\geq 27$  on QRS) versus low quality studies
3. Major depression diagnosis only
4. Different depression scales
5. Proportion of GP assessors (use of GP assessors was chosen for one of the sensitivity analyses as it was thought that GPs may have a different way of assessing depression than psychiatrists)
6. No competing interests

## RESULTS

### Description of studies

See: [Characteristics of included studies](#); [Characteristics of excluded studies](#).

### Results of the search

Following screening of abstracts obtained through the searches and through reference lists, hard copies of 37 articles were obtained. Of those, fourteen studies (16 different comparisons) met the full inclusion criteria for the review.

### Included studies

The studies are described individually in the [Characteristics of Included studies](#) table.

### Study design

All studies were randomised controlled trials.

### Participants

The studies included in the review covered a range of depressive disorders. One TCA study included only patients with major

depressive disorder (Barge-Schaapveld 2002). Two studies of SSRIs included only patients with major depressive disorder (Lepola 2001 Citalopram; Lepola 2001 Escitalopram; Wade 2002), as did one study with both TCA and SSRI arms (Doogan 1994).

### Interventions

Ten trials (11 comparisons) examining TCAs were identified. The TCA drugs included imipramine (Barge-Schaapveld 2002; Lecrubier 1997; Philipp 1999), amitriptyline (Blashki (75mg) 1971; Blashki (150 mg) 1971; Feighner 1979; Hollyman 1988; Mynors-Wallis 1995; Thomson 1982), dothiepin (Thompson 1989); and mianserin (Brink 1984).

Two trials (three comparisons) examined an SSRI drug. The SSRIs included citalopram (Lepola 2001 Citalopram) and escitalopram (Lepola 2001 Escitalopram; Wade 2002).

Two trials included both a TCA and an SSRI arm. Doogan 1994 compared sertraline and dothiepin against a placebo control. Malt 1999 examined sertraline and mianserin against placebo.

We found no trials in primary care for monoamine oxidase inhibitors and only one on venlafaxine. For the purposes of the current version of the review, the focus is on TCAs and SSRIs.

### Outcomes

For the continuous outcomes the two scales used and reported were either the Hamilton rating scale for depression (HAMD) or the Montgomery Asberg depression rating scale (MADRS). These two rating scales were the ones most commonly used. Occasionally others were reported (e.g. Lecrubier 1997 for discrete outcomes). For consistency and for the purposes of comparison, we used HAMD and MADRS data only.

### Excluded studies

Twenty studies were excluded from the review which had been identified through a search of the CCDAN Register as being of potential relevance to the review and required investigation beyond the title and CCDAN coding provided. Studies excluded from the review are listed in the [Characteristics of excluded studies](#), with reasons for exclusion.

Reasons included participants with physical comorbidities (n = 2); psychiatric comorbidity (e.g., both anxiety and depression) (n= 1) or participants from mixed setting (e.g. both primary and secondary care) (n=1).

In five cases, studies turned out not to have carried out in a primary care setting, or to feature treatment delivered by psychiatrists and not primary care staff. In a further five studies drugs were given either as combined treatment or against non-eligible comparators (of these, one study appeared to have a placebo arm but in fact included two active treatment arms which were both also given placebos) (O'Hara 1978). Two studies were related to other studies included within the review. On closer inspection one study was found to have an inadequate design; one an inappropriate drug (a monoamine oxidase inhibitor); one assessed outcomes on the Leeds Depression Scale only, and one study involved a drug

we considered no longer to be in current clinical use (the TCA iprindole) (Rickels 1968)).

### Risk of bias in included studies

#### Allocation

Eight of the fourteen studies included in the review were assessed as having adequate allocation concealment (Barge-Schaapveld 2002; Blashki (75mg) 1971/Blashki (150 mg) 1971; Doogan 1994; Feighner 1979; Hollyman 1988; Malt 1999; Mynors-Wallis 1995; Wade 2002)

**Other sources of bias** (see [Table 2](#) for individual scores of each study)

#### Sample size adequacy

Ten studies were considered to have an adequate sample size (Barge-Schaapveld 2002; Blashki (75mg) 1971/Blashki (150 mg) 1971; Doogan 1994; Feighner 1979; Hollyman 1988; Lepola 2001 Citalopram/Lepola 2001 Escitalopram; Malt 1999; Mynors-Wallis 1995; Philipp 1999; Wade 2002).

#### Clear description of treatment

All studies included in the review provided a clear description of the antidepressant treatment and placebo groups.

#### Representative source of participants

Nine studies were considered to have described and recruited a representative sample (Brink 1984; Doogan 1994; Hollyman 1988; Lecrubier 1997; Malt 1999; Mynors-Wallis 1995; Philipp 1999; Thompson 1989; Thomson 1982).

#### Use of diagnostic criteria

All studies used diagnostic criteria and specified the severity of depression, with the exception of Blashki (75mg) 1971/Blashki (150 mg) 1971 and Thomson 1982.

#### Withdrawals

All studies followed up withdrawals and included them in analyses with the exception of Barge-Schaapveld 2002, Doogan 1994, Mynors-Wallis 1995 and Thompson 1989.

#### Outcome measures

Only one study did not fully describe and use validated instruments (Doogan 1994).

### Effects of interventions

A fixed effect model was used for all analyses unless otherwise stated. If the I-squared statistic was >50%, a random effects model was used.

#### COMPARISON 1: TCAs VERSUS PLACEBO

##### Primary outcome

##### 1. Reduction in depression symptoms at post-treatment

There were 12 studies included in this analysis and 13 comparisons (one study reported on two doses, Blashki (150 mg) 1971,

Blashki (75mg) 1971, and hence is reported here as two arms versus placebo). The standardised mean difference (SMD) was -0.49 95% CI -0.67 to -0.32 (random effects) (Analysis 1.1).

## 2. Clinical response at post-treatment

There were 8 studies for this analysis with 8 comparisons. The relative risk for benefit (response) was 1.24, 95% CI 1.11 to 1.38 (Analysis 1.2). Response ranged from any response to remission.

### Secondary outcomes

#### 1. Occurrence of adverse effects at post-treatment

This forest plot reports the adverse effects not necessarily causing withdrawal from the study for patients on tricyclic antidepressants. The relative risk for harm was 2.01, (95% CI 1.59 to 2.55) (Analysis 1.3).

#### 2. Withdrawal from trials at post-treatment (Analysis 1.4)

For withdrawal from the study due to adverse effects for patients on tricyclic antidepressants, the relative risk for harm was 2.14, 95% CI 1.41 to 3.26.

For withdrawal due to treatment failure for patients on tricyclic antidepressants, there was a reduction in effect and hence a positive result suggesting more treatment failure in the placebo group, reported as a relative risk less than one. The relative risk was 0.40, 95% CI 0.27 to 0.58.

For withdrawal due to any reason for patients on tricyclic antidepressants, the relative risk was 1.02, 95% CI 0.84 to 1.24.

#### 3. Economic outcomes

No studies contributed economic data.

#### Reduction in depression symptoms: 1-4 week time points (Analysis 1.5)

One week: For these studies, the SMD was -0.2, 95% CI -0.59 to 0.18 (random effects).

Two weeks: For these studies, the SMD was -0.24, 95% CI -0.62 to 0.14 (random effects).

Three weeks: For these studies, the SMD was -0.38, 95% CI -1.01 to 0.26 (random effects).

Four weeks: For these studies, the SMD was -0.50, 95% CI -0.78 to -0.23 (random effects)

#### Clinical response: 1-4 week time points (Analysis 1.6)

Two weeks: The Lecrubier 1997 study used the Clinical Global Impression (CGI) scale to report percentage 'very much improved' instead of using the MADRS. Therefore the CGI was used for this analysis in this paper. The relative risk for benefit was 1.78, 95% CI 0.87 to 3.64 (random effects).

Four weeks: For these studies, the relative risk for benefit was 1.66, 95% CI 0.75 to 3.70 (random effects).

### Subgroup analyses

#### 1. Dosage of TCAs

##### Reduction in depression symptoms (Analysis 1.7)

Dose >100mg per day: For these studies in which patients were on more than 100mg per day of tricyclic antidepressant, the SMD was -0.5, 95% CI -0.71 to -0.29 (random effects).

Dose ≤ 100 mg per day: For studies in which patients started on 100mg or less per day of tricyclic antidepressant, only Blashki

(75mg) 1971 stayed at that dose. In Thompson 1989 the dose started at 75mg of Dothiepin but could go up to 150mg per day and for Philipp 1999 the starting dose of Imipramine was 50 mg but could go to 100mg. The SMD was -0.51, 95%CI -0.80 to -0.22 (random effects).

Dose ≤ 75 mg per day: For those studies with patients who stayed on 75 mg or lower the SMD was -0.31, 95%CI -0.78 to 0.16 (random effects)

##### Clinical response (Analysis 1.8)

For these studies, patients needed to be on more than 100 mg per day of tricyclic antidepressant and the outcomes were dichotomous. The relative risk for benefit (a response) was 1.27, 95% CI 1.13 to 1.44.

#### 2. UK vs USA/European-based studies

##### Reduction in depression symptoms (Analysis 1.9)

For patients recruited in the United Kingdom, the mean difference was -1.83, 95% CI -3.32 to -0.34 (random effects). For patients recruited in the USA or Europe, the mean difference was -2.82, 95% CI -3.61 to -2.03 (random effects).

##### Clinical response (Analysis 1.10)

For patients recruited in the United Kingdom, the relative risk for benefit was 1.28, 95% CI 1.11 to 1.49. For patients recruited in the USA or Europe, the relative risk for benefit was 1.19, 95% CI 1.00 to 1.40.

### Sensitivity analyses

#### 1. Approximated vs non-approximated data

##### Reduction in depression symptoms (Analysis 1.11)

For approximated data, there were seven studies in the analysis, with the approximations resulting from an "eyeball" reckoning from a graph or use of standard deviations from other studies where there were none reported. The SMD was -0.46, 95% CI -0.73 to -0.18 (random effects). For non-approximated data, the SMD was -0.39, 95% CI -0.79 to 0.01.

##### Clinical response (Analysis 1.12)

For approximated data, the values obtained from studies were usually "eyeballed" from graphs in the paper. The relative risk for benefit (a response) was 1.28, 95% CI 1.12 to 1.46. For non-approximated data, the relative risk for benefit (a response) was 1.17, 95% CI 0.96 to 1.42.

#### 2. High versus low quality studies

##### Reduction in depression symptoms (Analysis 1.13)

For high quality studies (quality score of 28 or more out of 44 and no zeros on the seven key methodological items), the SMD was -0.60, 95% CI -0.80 to -0.41 (random effects). For low quality studies, the SMD was -0.35, 95% CI -0.63 to -0.07 (random effects).

##### Clinical response (Analysis 1.14)

For high quality studies, the relative risk for benefit was 1.31, 95% CI 1.14 to 1.51. For low quality studies, the relative risk for benefit was 1.11, 95% CI 0.94 to 1.32.

#### 3. Major depression diagnosis

##### Reduction in depression symptoms (Analysis 1.15)

For studies in which patients had a diagnosis of major depression, the mean difference was -1.37, 95% CI -2.52 to -0.22.

#### 4. Use of different depression scales

##### *Reduction in depression symptoms* (Analysis 1.16)

For studies using the Montgomery-Asberg scale, the mean difference was -1.24, 95% CI -2.90 to 0.42 (random effects). For studies using the Hamilton Depression Scale, the mean difference was -3.17, 95% CI -3.94 to -2.39 (random effects). For studies where the outcomes were continuous but included outcomes of remission (less than 8 on the Hamilton Depression Scale), the mean difference was -3.38, 95% CI -4.48 to -2.29 (random effects).

##### *Clinical response:greatly improved/remission* (Analysis 1.17)

For studies in which patients had outcomes of greatly improved or remission data, the relative risk for benefit was 1.29 95% CI (1.11 to 1.50).

#### 5. 50% or more GP assessors

##### *Reduction in depression symptoms* (Analysis 1.18)

For studies in which at least half or more of the assessors were primary care providers, the SMD was -0.48, 95% CI -0.62 to -0.33.

##### *Clinical response* (Analysis 1.19)

For studies in which at least half or more of the assessors were primary care providers, the relative risk for benefit (a response) was 1.19, 95% CI 1.03 to 1.39.

#### 6. Studies with no competing interest

##### *Reduction in depression symptoms* (Analysis 1.20)

For studies where no competing interest was expressed (i.e. no pharmaceutical company), the SMD was -0.68, 95% CI -0.90 to -0.47.

##### *Clinical response* (Analysis 1.21)

For studies in which no competing interest was expressed (i.e. no pharmaceutical company), the relative risk for benefit was 1.59, 95% CI 1.28 to 1.96.

## COMPARISON 2: SSRI<sub>s</sub> VERSUS PLACEBO

### Primary outcome

#### 1. Clinical response at post-treatment (Analysis 2.1)

There were four studies with dichotomous outcomes in this comparisons. One study examined two medications, Escitalopram and Citalopram (Lepola 2001 Citalopram Lepola 2001 Escitalopram). The relative risk for benefit was 1.28, 95% CI 1.15 to 1.43.

### Secondary outcomes

#### 1. Occurrence of adverse effects at post treatment (Analysis 2.2)

Adverse effects did not necessarily cause withdrawal from the study for patients on SSRIs. The relative risk for harm was 1.08, 95% CI 0.96 to 1.22.

#### 2. Withdrawal from trials at post treatment (Analysis 2.3)

For withdrawal due to adverse effects for patients on SSRIs, the relative risk for harm was 2.05, 95% CI 1.11 to 3.75.

For withdrawal due to treatment failure for patients on SSRIs, reported as a reduction in effect and hence a positive result, suggesting more treatment failure in the placebo group is reported as a relative risk less than one, the relative risk was 0.51, 95% CI 0.34

to 0.78.

For withdrawal due to any reason for patients on SSRIs, the relative risk was 1.02, 95% CI 0.72 to 1.44.

#### 3. Economic outcomes

No studies contributed data to this outcome

### Subgroup analyses

#### 1. Dosage of SSRIs

No subgroup analyses were performed due to lack of studies

#### 2. UK versus USA/European studies (Analysis 2.4)

For UK trials, the relative risk for benefit was 1.37, 95% CI 1.13 to 1.66. For USA/European studies, the relative risk for benefit was 1.25, 95% CI 1.08 to 1.44.

### Sensitivity analyses

#### 1. High quality studies (Analysis 2.5)

The relative risk for benefit for high quality studies only was 1.32, 95% CI 1.10 to 1.59.

#### 2. Major depression diagnosis (Analysis 2.6)

For studies in which patients had a diagnosis of major depression, the relative risk for benefit was 1.29, 95% CI 1.13 to 1.48.

#### 3. Use of different depression scales

##### *Reduction in depression symptoms* (Analysis 2.7)

For the Montgomery-Asberg scale, standard deviations were only available for the Malt study so those SDs were used for the other studies. The SMD was -0.24, 95% CI -0.35 to -0.12.

##### *Clinical response* (Analysis 2.8)

For the Montgomery-Asberg scale (remission or improved), the relative risk for benefit was 1.27, 95% CI 1.11 to 1.45).

Sensitivity analyses were not performed for approximated data, use of >50% GP assessors or studies with no competing interest.

### Publication bias

Results from the funnel plot showed that small studies with no effect were missing from the graph (Figure 1). This may reflect some publication bias as such studies can be difficult to get published.

### Summary of main results: NNT and NNH

The numbers needed to treat (NNT) for TCAs ranged from 7 to 16 {median NNT 9} patient expected event rate ranged from 63% to 26% respectively) and for SSRIs from 7 to 8 {median NNT 7} (patient expected event rate ranged from 48% to 42% respectively) . The numbers needed to harm (NNH) with withdrawal due to side effects) ranged from 4 to 30 for TCAs (excluding three studies with no harmful events leading to withdrawal) and 20 to 90 for SSRIs.

## DISCUSSION

### Summary of main results

The review included 14 studies (16 comparisons), and the results show that both TCAs and SSRIs are significantly more effective than placebo for both discrete and continuous outcomes. Such

analyses were significant whether the GPs were 50% or more of the assessors, the studies were UK or Europe/US-based, and where the Hamilton depression scale was used, but not the Montgomery-Asberg scale. For TCAs, the results were also positive when analyses included studies that had remission as an outcome or a Hamilton score of less than 8 as a marker of remission, and where no commercial backing for the study was reported. The only analyses which were not statistically significant were those for low quality studies and for response after one, two and three weeks of tricyclic antidepressants. The responses were statistically significant for four weeks after starting therapy. The results were also positive for the pooling of those studies that had doses of tricyclic antidepressants at or under 100mg per day. The numbers needed to treat to get an improvement was 6 to 16 for the TCAs (median NNT 9) and 7 to 8 for the SSRIs (median NNT 7). These findings are comparable to other treatments in primary care and likely to be acceptable to most primary care clinicians. The results apply to major depressive disorder and heterogeneous depression (commonly seen in primary care).

Adverse effects were statistically higher than placebo for both tricyclic antidepressants and SSRIs except for withdrawal for any reason. Withdrawal due to treatment failure was statistically greater in the placebo group than the medication group for both classes of medication. This is consistent with the evidence for effectiveness.

### Overall completeness and applicability of evidence

The review included studies with a range of depressed patients. One TCA study included only patients with major depressive disorder (Barge-Schaapveld 2002). Two studies of SSRIs included only patients with major depressive disorder (Lepola 2001 Citalopram; Lepola 2001 Escitalopram; Wade 2002), as did one study with both TCA and SSRI arms (Doogan 1994). As patients in primary care settings have a range of depression severity the generalisability of the results of these studies to primary care is reasonable (Arroll 2002). Only one study conducted an analysis of minor depression and this found that amitriptyline was superior to placebo in probable or definite major depression on the Research Diagnostic Criteria, but not in minor depression (Paykel 1988). Amitriptyline was also superior to placebo in subjects with initial scores on the Hamilton Depression Scale of 13-15, and 16 or more, but not with lower scores. The Paykell study (Hollyman 1988) indicates that tricyclic antidepressants are of considerable benefit in relatively mild depressive disorders, except in the mildest range.

### Quality of the evidence

There has been an issue that studies in primary care populations may only benefit from antidepressant medication when it is given

by a psychiatrist. Our significant findings for continuous and discrete outcomes contradict this. There is evidence in this review that both TCAs and SSRIs are more effective than placebo in the primary care setting. This needs to be tempered with the knowledge that there may be some publication bias and that many of the studies were small and of variable quality.

The majority of systematic reviews concerning antidepressant efficacy fail to report a detailed examination of methodological quality and therefore fail to include such criteria when examining treatment effects. This is important because bias in primary studies due to poor methodological quality (e.g. selection bias, ascertainment bias, inappropriate handling of withdrawals, protocol violations) can lead to exaggeration of treatment effects. A study of trial quality in systematic reviews showed that if low quality studies were included in pooled estimates of treatment effect there was a 30-50% exaggeration of treatment effectiveness (Moher 1999). We did not however, find any appreciable differences between effects for the high quality studies compared with the lower quality studies other than a non-significant result for clinical responses in the low quality studies. Another form of bias for meta-analysis is that of publication bias. Our funnel plot suggests that small studies with small effect sizes may be missing. This is consistent with a review of all applications to the US FDA, which examined all submitted trials of newer antidepressants. Their finding was that when all studies were considered, the benefit of antidepressants was much smaller than when only the published studies were considered (Kirsch 2002).

### Agreements and disagreements with other studies or reviews

We found only 14 studies (16 comparisons) based in primary care that met inclusion criteria and provided evidence for the comparative efficacy of TCAs and SSRIs versus placebo. In a previous review of trials comparing SSRIs and TCAs in primary care, we similarly found relatively few studies (MacGillivray 2003). This compares with considerably larger numbers of studies conducted with patients from all settings. Williams 2000 found 206 studies comparing a newer antidepressant with an older (123 of which involved an SSRI). They found a benefit for the newer antidepressants of RR = 1.6 (95% CI 1.3 to 2.3). In a review including only studies conducted within the USA, Steffens 1997 discovered 36 trials comparing a TCA drug with an SSRI. The majority of studies included in the present review were small phase three studies supported by commercial funding. In fact all of the SSRI versus placebo studies had some commercial involvement. Many studies were of short duration, typically 6-8 weeks. Our findings are in keeping with a review of 108 studies of newer antidepressants, which found that both TCAs and SSRIs were effective in treating depression (Anderson 2001).

Previous reviews have tended to show that SSRIs are generally more tolerable than TCAs, although evidence is conflicting. Meta-anal-

yses using drop-out rates as an index of tolerability have varied in their findings. Whilst one review (Song 1993) found no difference in drop-out rates between SSRIs (32.3%) and TCAs (33.2%), another (Anderson 1995) found a small but statistically significant lower drop-out rate for SSRIs (30.8%) relative to TCAs (33.4%). In our review focusing only on primary care treated samples, we found drop-out rates due to adverse effects for SSRIs of 5.2% and TCAs of 10.2%. In another review of antidepressants in primary care the risk of withdrawal of patients due to side effects with SSRI compared with TCAs was 0.6 (95% CI 0.6-0.88) (MacGillivray 2003). Primary care clinicians may be more likely than hospital colleagues to alter therapy when side-effects are experienced, even during clinical trials (Simon 2002).

Our finding of a significant benefit for low dose tricyclic antidepressants (i.e.  $\leq 100\text{mg}$  per day) is consistent with a meta-analysis of studies in all settings which found a benefit from low dose tricyclic antidepressants (Furukawa 2002). Only one of the three studies in our review was statistically significant which suggests that larger trials are needed in the primary care setting to clarify issues such as dose of antidepressants (Thompson 1989; Blashki (75mg) 1971). The review of low dose studies found there was no evidence of increased benefit with higher doses but there was an increase in side effects. Our results were similar to that review, but the increase in adverse effects was non-significant.

## AUTHORS' CONCLUSIONS

### Implications for practice

Our results suggest that treating depression with antidepressants

is an appropriate activity in primary care. The evidence is clear for major depression and levels of depression greater than minor depression. Based on this evidence, tricyclic antidepressants could be considered and the dose kept at or below 100mg per day, and waiting at least 4 weeks for a response may be worth considering. Both SSRIs and TCAs appear to be tolerable, but more adverse effects can be expected with TCAs. The numbers needed to treat (NNT) are between 6 and 16 for TCAs (median NNT 9) and 7 to 8 (median NNT 7) for SSRIs. An NNT of 7 means that one patient will benefit from treatment and six will not although up to half may get better on placebo. This is true in primary care and secondary care. There is no dose information on SSRIs and we cannot comment on the appropriate duration of treatment for either TCAs or SSRIs.

### Implications for research

Gaps in the literature include a lack of attention to the treatment of specific diagnostic groups, in particular minor depression. Further research is needed on these groups of patients in addition to longer and larger trials of low dose TCAs. There is also a need for studies to be conducted by agencies other than pharmaceutical companies and to conduct studies in patients with lower levels of depression i.e. minor depression.

## AUTHORS' CONCLUSIONS

## ACKNOWLEDGEMENTS

The original work for this review was funded by a grant from the Chief Scientist Office (Scotland)

### Implications for practice

Our results suggest that treating depression with antidepressants

## REFERENCES

### References to studies included in this review

#### Barge-Schaapveld 2002 {published data only}

\* Barge-Schaapveld DQ, Nicholson NA. Effects of antidepressant treatment on the quality of daily life: an experience sampling study. *Journal of Clinical Psychiatry* 2002;**63**(6):477–85.

#### Blashki (150 mg) 1971 {published data only}

Blashki TG, Mowbray R, Davies B. Controlled trials of amitriptyline in general practice. *BMJ* 1971;**1**(5741): 133–8.

#### Blashki (75mg) 1971 {published data only}

Blashki TG, Mowbray R, Davies B. Controlled trials of amitriptyline in general practice. *BMJ* 1971;**1**(5741): 133–8.

#### Brink 1984 {published data only}

Brink CW, van der Krogt JP, Dunbar GC, Behagel LH. A controlled clinical trial of mianserin and placebo in the

treatment of depression in general practice. *Tijdschrift voor therapie, geneesmiddel, en onderzoek* 1984;**9**(10):513–7.

#### Doogan 1994 {published data only}

Doogan DP, Langdon CJ. A double-blind, placebo controlled comparison of sertraline and dothiepin in the treatment of major depression in general practice. *International Clinical Psychopharmacology* 1994;**9**(2): 95–100.

#### Feighner 1979 {published data only}

Feighner JP, Brauzer B, Gelenberg AJ, Gomez E, Kiev A, Kurland ML, et al. A placebo-controlled multicenter trial of limbitrol versus its components amitriptyline and chlordiazepoxide. *Psychopharmacology* 1979;**61**(2):217–25.

#### Hollyman 1988 {published data only}

Hollyman JA, Freeling P, Paykel ES, Bhat A, Sedgwick P. Double-blind placebo-controlled trial of amitriptyline

among depressed patients in general practice. *Journal of the Royal College of General Practitioners* 1988;**38**(314):393–7.

**Lecrubier 1997** {published data only}

Lecrubier Y, Bourin M, Moon CA, Schifano F, Blanchard C, Danjou P, et al. Efficacy of venlafaxine in depressive illness. *Acta psychiatrica Scandinavica* 1997;**95**(6):485–93.

**Lepola 2001 Citalopram** {published data only}

Lepola U, Loft H, Reines EH. Escitalopram is efficacious and well tolerated for the treatment of depression in primary care. Abstract: Annual meeting the American Medical Association. New Orleans. 2001.

Lepola UM, Loft H, Reines EH. Escitalopram (10–20mg/day) is effective and well tolerated in a placebo controlled study in depression in primary care. *International Journal of Clinical Psychopharmacology* 2003;**18**(4):211–7.

**Lepola 2001 Escitalopram** {published data only}

Lepola U, Loft H, Reines EH. Escitalopram is efficacious and well tolerated for the treatment of depression in primary care. Abstract: Annual meeting the American Medical Association. New Orleans. 2001.

Lepola UM, Loft H, Reines EH. Escitalopram (10–20mg/day) is effective and well tolerated in a placebo controlled study in depression in primary care. *International Journal of Clinical Psychopharmacology* 2003;**18**(4):211–7.

**Malt 1999** {published data only}

Malt UF, Robak OH, Madsbu H-P, Bakke O, Loeb M. The Norwegian naturalistic treatment study of depression in general practice (NORDEP) - randomised double blind study. *BMJ* 1999;**318**(7192):1180–4.

**Mynors-Wallis 1995** {published data only}

Mynors-Wallis LM, Gath DH, Lloyd-Thomas AR, Tomlinson D. Randomised controlled trial comparing problem solving treatment with amitriptyline and placebo for major depression in primary care. *BMJ* 1995;**310**(6877):441–5.

**Philipp 1999** {published data only}

Philipp M, Kohnen R, Hiller KO. Hypericum extract versus imipramine or placebo in patients with moderate depression: randomised multicentre study of treatment for eight weeks. *BMJ* 1999;**319**(7224):1534–8.

**Thompson 1989** {published data only}

Thompson C, Thompson CM. The prescribing of antidepressants in General Practice. II: A placebo-controlled trial of low-dose dothiepin. *Human Psychopharmacology* 1989;**4**(3):191–204.

**Thomson 1982** {published data only}

Thomson J, Rankin H, Ashcroft GW, Yates CM, McQueen JK, Cummings SW. The prescribing of antidepressants in General Practice. II: A placebo-controlled trial of low-dose dothiepin: a comparison of L-tryptophan, amitriptyline, and a combination of L-tryptophan and amitriptyline with placebo. *Psychological Medicine* 1982;**12**:741–51.

**Wade 2002** {published data only}

Wade A, Lemming OM, Hedegaard KB. Escitalopram 10mg/day is effective and well tolerated in a placebo-

controlled study in depression in primary care. *International Clinical Psychopharmacology* 2002;**17**(3):95–102.

## References to studies excluded from this review

**Andersen 1993** {published data only}

\* Andersen G, Vestergaard K, Riis JO. Citalopram for post-stroke pathological crying. *Lancet* 1993;**342**:837–9.

Andersen G, Vestergaard K, Riis JO. Pathological crying and emotional lability - a controlled study of citalopram - a SSRI. *Canadian Journal of Neurological Sciences* 1993;**20**:S115.

**Bakish 1992** {published data only}

Bakish D, Wiens A, Ellis J, Alda M, Lapierre Y. A double-blind placebo-controlled comparison of moclobemide and amitriptyline in the treatment of depression. *Canadian Journal of Psychiatry. Revue Canadienne de Psychiatrie* 1992;**37**(Suppl 1):12–7.

**Barrett 1999** {published data only}

\* Barrett JE, Williams JW Jr, Oxman TE, Katon W, Frank E, Hegel MT, Sullivan M, Schulberg HC. The treatment effectiveness project. A comparison of the effectiveness of paroxetine, problem-solving therapy, and placebo in the treatment of minor depression and dysthymia in primary care patients: background and research plan. *General Hospital Psychiatry* 1999;**21**(4):260–273.

**Barrett 2001** {published data only}

Barrett JE, Williams JW Jr, Oxman TE, Frank E, Katon W, Sullivan M, Hegel MT, Cornell JE, Sengupta AS. Treatment of dysthymia and minor depression in primary care: a randomized trial in patients aged 18 to 59 years. *Journal of Family Practice* 2001;**50**(5):405–12.

**Borson 1992** {published data only}

Borson S, McDonald GJ, Gayle T, Deffebach M, Lakshminarayan S, VanTuinen C. Improvement in mood, physical symptoms, and function with nortriptyline for depression in patients with chronic obstructive pulmonary disease. *Psychosomatics* 1992;**33**(2):190–201.

**Gomez 1968** {published data only}

Gomez JR, Gomez G. The treatment of anxiety and depression in general practice using an amitriptyline-perphenazine preparation. *British Journal of Clinical Practice* 1968;**22**(3):105–9.

**Houston 1983** {published data only}

Houston J, Berg I, Butler A, McGuire R. Amitriptyline for depressed women with young children in general practice. *British Journal of Psychiatry* 1983;**142**:103–4.

**Jacobs 1965** {published data only}

Jacobs MA. Approach to studying drug effects in ambulatory patients. *Archives of General Psychiatry* 1965;**13**:163–71.

**Katz 2005** {published data only}

Katz T, Fisher P, Katz A, Davidson J, Feder G. The feasibility of a randomised, placebo-controlled clinical trial of homeopathic treatment of depression in general practice. *Homeopathy: the Journal of the Faculty of Homeopathy* 2005;**94**(3):145–52.



**Laakman 1995** *[published data only]*

Laakman G, Faltermaier Temizel M, Bossert Zaudig S, Baghai T, Lorkowski G. Treatment of depressive outpatients with lorazepam, alprazolam, amitriptyline and placebo. *Psychopharmacology* 1995;**120**(1):109–15.

**Lehmann 1976** *[published data only]*

Lehmann HE, Pecknold JC, Ban TA, Orbach L. A double-blind comparative clinical trial with maprotiline (Ludiomil) and imipramine in newly-admitted depressed patients. *Current Therapeutic Research, Clinical and Experimental* 1976;**19**(4):463–8.

**Montgomery 1998** *[published data only]*

Montgomery SA, Reimitz PE, Zivkov M. Mirtazapine versus amitriptyline in the long-term treatment of depression: a double-blind placebo-controlled study. *International Clinical Psychopharmacology* 1998;**13**(2):63–73.

**O'Hara 1978** *[published data only]*

O'Hara H, O'Hara J, Valle Jones JC, McGhie RL, Brodie NH, Schiff AA. Maprotiline and fluphenazine/nortriptyline in depression. *Practitioner* 1978;**221**(1323):419–23.

**Paykel 1988** *[published data only]*

\* Paykel ES, Hollyman JA, Freeling P, Sedgwick P. Predictors of therapeutic benefit from amitriptyline in mild depression: A general practice placebo-controlled trial. *Journal of Affective Disorders* 1988;**14**(1):83–95.

**Rickels 1968** *[published data only]*

Rickels K, Gordon PE, Meckelnburg R, Sablosky L, Whalen EM, Dion H. Iprindole in neurotic depressed general practice patients: A controlled study. *Psychosomatics* 1968;**9**(4):208–14.

**Rickels 1971** *[published data only]*

Rickels K, Laquer KG, Rial WY, Rosenfeld H, Schneider B, Wagner IG. The combination of protriptyline and oxazepam in depressed neurotic general-practice patients. *Psychosomatics* 1971;**12**(5):341–8.

**Rickels 1991** *[published data only]*

Rickels K, London J, Fox I, Hassman H, Csanalosi I, Weise C. Adinazolam, diazepam, imipramine, and placebo in major depressive disorder: a controlled study. *Pharmacopsychiatry* 1991;**24**(4):127–31.

**Schiffer 1975** *[published data only]*

Schiff AA, Murphy JE, & Anderson JA. Non-pharmacological factors in drug therapy: The inter-action of doctor, patient and tablet appearance in the treatment of anxiety/depressive syndromes. *Journal of International Medical Research* 1975;**3**:125–33.

**SCTG 1985** *[published data only]*

Sussex Clinical Trials Group. Separate and combined anxiolytic and anti-depressant treatment of mixed anxiety/depression. A double-blind, placebo controlled comparison. *Acta Psychiatrica Scandinavica* 1985;**72**(1):81–8.

**Thompson 1994** *[published data only]*

Thompson C. Management of depression in real-life settings: knowledge gained from large-scale clinical trials.

*International Clinical Psychopharmacology* 1994;**9**(suppl 3): 21–25.

**Additional references****Anderson 1995**

Anderson IM, Tomenson BM. Treatment discontinuation with selective serotonin reuptake inhibitors compared with tricyclic antidepressants: a meta-analysis. *BMJ* 1995;**310**(6992):1433–8.

**Anderson 2001**

Anderson IM. Meta-analytical studies on new antidepressants. *British Medical Bulletin* 2001;**57**:161–78.

**APA 1993**

American Psychiatric Association. Practice guidelines for major depressive disorder in adults. *American Journal of Psychiatry* 1993;**150**:Suppl 4.

**Arroll 2002**

Arroll B, Goodyear-Smith F, Lloyd T. Depression in patients in an Auckland General Practice. *New Zealand Journal of Medicine* 2002;**115**(1152):176–9.

**Arroll 2005**

Arroll B, Macgillivray S, Ogston S, Reid I, Sullivan F, Williams B, Crombie I. Efficacy and tolerability of tricyclic antidepressants and SSRI compared with placebo for treatment of depression in primary care: a meta-analysis. *Annals of Family Medicine* 2005;**3**(5):449–56.

**Arya 1999**

Arya R. The management of depression in primary health care. *Current Opinion in Psychiatry* 1999;**12**(1):103–7.

**Ellis 2002**

Ellis PM, Smith DA. Treating depression: the beyond blue guidelines for treating depression in primary care. *Medical Journal of Australia* 2002;**176**:S77–S83.

**Furukawa 2002**

Furukawa TA, McGuire H, Barbui C. Meta-analysis of effects and side effects of low dosage tricyclic antidepressants systematic review. *BMJ* 2002;**325**:991–1000.

**Gill 1997**

Gill D. Prescribing antidepressants in general practice. Systematic review of all pertinent trials is required to establish guidelines. *BMJ* 1997;**314**:826–7.

**Goldberg 1998**

Goldberg D, Privett M, Ustun B, Simon G, Linden M. The effects of detection and treatment on the outcome of major depression in primary care: a naturalistic study in 15 cities. *British Journal of General Practice* 1998;**48**(437):1840–44.

**Hamilton 1960**

Hamilton A. A rating scale for depression. *Journal of Neurology Neurosurgery and Psychiatry* 1960;**23**(1):56–62.

**Higgins 2008**

Higgins JPT, Altman PG, editor(s). Chapter 8: Assessing risk of bias in included studies. In: Higgins JPT, Green S editor(s). *Cochrane Handbook for Systematic Reviews of Interventions. Version 5.0.0 [updated February 2008]*.

The Cochrane Collaboration, 2008. Available from [www.cochrane-handbook.org](http://www.cochrane-handbook.org).

**Jenkins 2001**

Jenkins GC. Management of patients with depression. *British Journal of General Practice* 2001;**51**(472):932–3.

**Joffe 1996**

Joffe R, Sokolov S. Antidepressant treatment of depression: a meta-analysis. *Canadian Journal of Psychiatry* 1996;**41**: 613–6.

**King 2002**

King M, Davidson O, Taylor F, Haines A, Sharp D, Turner R. Effectiveness of teaching general practitioners skills in brief cognitive behaviour therapy to treat patients with depression: randomised controlled trial. *BMJ* 2002;**324** (7343):947–50.

**Kirsch 2002**

Kirsch I, Moore TJ, Scoboria A, Nicholls SS. The emperor's new drugs: an analysis of antidepressant medication data submitted to the US Food and drug administration. *Prevention and Treatment* 2002;**5**:1522–34.

**Kirsch 2008**

Kirsch I, Deacon BJ, Huedo-Medina T, Scoboria A, Moore TJ, Johnson BT. Initial severity and antidepressant benefits: A meta-analysis of data submitted to the food and drug organisation. *PLOS Medicine* 2008;**5**(2):e45.

**MacGillivray 2003**

MacGillivray S, Arroll B, Hatcher S, Ogston S, Reid I, Sullivan F, et al. Efficacy and tolerability of selective serotonin reuptake inhibitors compared with tricyclic antidepressants in depression treated in primary care: systematic review and meta-analysis. *BMJ* 2003;**326**(7397):1014–17.

**MAGPIE 2003**

Magpie Research Group. The nature and prevalence of psychological problems in New Zealand primary healthcare: a report on mental health and general practice investigation (MAGPIE). *New Zealand Medical Journal* 2003;**116**: 1171–1185.

**Moher 1999**

Moher D, Cook DJ, Jadad AR, Tugwell P, Moher M, Johnes A, et al. Assessing the quality of reports of randomised trials: implications for the conduct of meta-analyses. *Health Technology Assessment* 1999;**3**(12):1–98.

**Moncrieff 2001**

Moncrieff J, Churchill R, Drummond C, McGuire H. Development of a quality assessment instrument for trials

of treatments for depression and neurosis. *International Journal of Methods in Psychiatric Research* 2001;**10**:126–33.

**Montgomery 1979**

Montgomery SA, Asberg M. A new depression scale designed to be sensitive to change. *British Journal of Psychiatry* 1979;**134**:382–89.

**Mulrow 2000**

Mulrow CD, Williams LW, Chiquette E, Aguilar C, Hitchcock-Noel P, Lee S, et al. Efficacy of newer medications for treating depression in primary care patients. *American Journal of Medicine* 2000;**108**(1):54–64.

**NCCHTA 2000**

National Coordinating Centre for Health Technology Assessment. *Health technology briefing paper: Drug treatment of mild depression*. NCCHTA, 2000.

**Oakley-Browne 2006**

Oakley-Browne MA, Wells JE, Scott KM. *Te Rau Hinengaro: The New Zealand Mental Health Survey*. Wellington: Ministry of Health, 2006.

**Simon 2002**

Simon GE. Venlafaxine is more effective than selective serotonin-reuptake inhibitors for depression. *ACP Journal Club* 2002;**137**:101.

**Song 1993**

Song F, Freemantle N, Sheldon TA, House A, Watson P, Long A, et al. Selective serotonin reuptake inhibitors compared with tricyclic antidepressants: a meta-analysis of efficacy and acceptability. *BMJ* 1993;**306**(6879):683–7.

**Steffens 1997**

Steffens DC, Krishnan KR, Helms MJ. Are SSRIs better than TCAs? Comparison of SSRIs and TCAs: a meta-analysis. *Depression and Anxiety* 1997;**6**(1):10–18.

**Suh 1999**

Suh T, Gallo JJ. The management of depression among general medical service providers. *Psychological Medicine* 1999;**27**:1051–63.

**Williams 2000**

Williams JW, Mulrow CD, Chiquette E, Noel PH, Acaster C, Cornell J. A systematic review of newer pharmacotherapies for depression in adults: Evidence report summary. *Annals of Internal Medicine* 2000;**132**(9):743–56.

\* Indicates the major publication for the study

## CHARACTERISTICS OF STUDIES

### Characteristics of included studies [ordered by study ID]

#### Barge-Schaapveld 2002

Methods	Imipramine vs placebo randomised controlled trial (RCT) in eight primary care practices in Netherlands
Participants	N = 63. Imipramine group n=32; Placebo group n=31. Inclusion criteria: Age 18-65 years. DSM-III-R/ DSM-IV diagnosis of current depressive disorder. Equal or greater than 18 on 17-item Hamilton Rating Scale for Depression (HAMD) and a score of equal or greater than 4 on Clinical Global Impression scale (CGI) Exclusion criteria: on psychotropics or major medical disorder
Interventions	50 mg Imipramine per day increasing to over 200 mg per day after 1 week. Duration 6 weeks with a subsample going to 18 weeks
Outcomes	10 withdrew due to adverse effects: 6 on Imipramine and 4 on placebo. Results at 6 weeks: Imipramine group n=23, HAMD mean=8.9 (SD 6.2), Placebo n=26, HAMD mean=12.5 (SD 6.3)
Notes	Not clear who administered medication and outcome check list

#### Risk of bias

Item	Authors' judgement	Description
Allocation concealment?	Unclear	B - Unclear

#### Blashki (150 mg) 1971

Methods	Amitriptyline vs Amylobarbitone vs placebo RCT involving 21 GPs in Melbourne over a 6 month period
Participants	N = 82. Inclusion criteria: Women over 15 years (mean age 37.7), persistent lower mood with depressive symptoms; sleep and appetite disturbances, loss of interest, inability to concentrate. Mean baseline HAMD = 17.4 (SD4.9) Exclusion criteria: organic brain disorder, schizophrenia, epilepsy, alcoholism and mental retardation
Interventions	Amitriptyline 150 mg per day, amylobarbitone 150 mg/day and placebo for 4 weeks
Outcomes	23 drop outs. (82 started, 61 analysed) Results at 28 days: Amitriptyline 75mg n=13, HAMD mean=6.4 (SD 5.4), vs Amitriptyline 150 mg n=14, HAMD mean=5.1 (SD 4.9) vs Placebo n=18, HAMD mean=11.4 (SD 9.6) At one week: Amitriptyline 75mg n=13, HAMD mean=11.2 (SD 3.9) vs Amitriptyline 150mg n=14, HAMD mean=7.1 (SD 4.7) vs Placebo n=18, HAMD mean=14.2 (SD 6.2) Side effects not leading to withdrawal included shakiness of legs or arms, dry mouth, blurred vision, fuzziness in the head drowsiness, restlessness, headache, pain in stomach (no difference between groups). Adverse effects leading to withdrawal (11/82): Amitriptyline 75mg/day (4), Amitriptyline 150mg/day (3), Placebo (4)

**Blashki (150 mg) 1971** (Continued)

Notes	Amitriptyline versus placebo. Saw a psychiatrist for medication but also saw their GP during 4 weeks of study. Considered as being conducted by a psychiatrist	
<b>Risk of bias</b>		
<b>Item</b>	<b>Authors' judgement</b>	<b>Description</b>
Allocation concealment?	Yes	A - Adequate

**Blashki (75mg) 1971**

Methods	Amitriptyline vs Amylobarbitone vs placebo RCT involving 21 GPs in Melbourne over a 6 month period	
Participants	N = 82. Inclusion criteria: Women over 15 years (mean age 37.7), persistent lower mood with depressive symptoms; sleep and appetite disturbances, loss of interest, inability to concentrate. Mean baseline HAMD = 17.4 (SD4.9) Exclusion criteria: organic brain disorder, schizophrenia, epilepsy, alcoholism and mental retardation	
Interventions	Amitriptyline 75 mg per day, amylobarbitone 150 mg/day and placebo for 4 weeks	
Outcomes	23 drop outs. (82 started, 61 analysed) Results at 28 days: Amitriptyline 75mg n=13, HAMD mean=6.4 (SD 5.4), vs Amitriptyline 150 mg n=14, HAMD mean=5.1 (SD 4.9) vs Placebo n=18, HAMD mean=11.4 (SD 9.6) At one week: Amitriptyline 75mg n=13, HAMD mean=11.2 (SD 3.9) vs Amitriptyline 150mg n=14, HAMD mean=7.1 (SD 4.7) vs Placebo n=18, HAMD mean=14.2 (SD 6.2) Side effects not leading to withdrawal included shakiness of legs or arms, dry mouth, blurred vision, fuzziness in the head drowsiness, restlessness, headache, pain in stomach (no difference between groups). Adverse effects leading to withdrawal (11/82): Amitriptyline 75mg/day (4), Amitriptyline 150mg/day (3), Placebo (4)	
Notes	Amitriptyline versus placebo. Saw a psychiatrist for medication but also saw their GP during 4 weeks of study. Considered as being conducted by a psychiatrist	
<b>Risk of bias</b>		
<b>Item</b>	<b>Authors' judgement</b>	<b>Description</b>
Allocation concealment?	Yes	A - Adequate

**Brink 1984**

Methods	Mianserin vs placebo RCT Patients from a representative Dutch general practice	
Participants	N =52. Patients aged 18-65 years with a diagnosis of depressive disorder according to the Medical Research Council criteria: persistent alteration of mood which exceeded customary sadness accompanied by one or more of following: self deprecation with a morbid sense of guilt, sleep disturbance, hypochondriasis with psychomotor retardation or agitation. Mianserin n=27, placebo n=25 Exclusion: major illness, ECT or antidepressants in previous 6 months. Only 3 patients in each group had HAMD scores <17	
Interventions	Mianserin 3 x 10 mg nightly increasing to 6x nightly or matching placebo. Could have oxazepam as a hypnotic. Duration 4 weeks	
Outcomes	29% (15) drop outs. 9 from Mianserin and 6 placebo. Intention to treat if stayed in trial up to 15 days: N=24 in mianserin and 25 in placebo group. At day 28: Mianserin group HAMD mean 8.8 (SD 7.3) vs Placebo HAMD mean 11.1 (SD 6.9). Mianserin effect was significant at day 7: Mianserin group N=26, HAMD mean 14.9, (SD 3.8) vs Placebo N=25 HAMD mean 17.6 (SD 6.0) at day 7. At day 14: Mianserin group N=24 HAMD mean 12.1 (SD 6.8) vs N=25, HAMD mean 14.1 (SD 7.0) for Placebo. At day 21: Mianserin group N=24, HAMD mean 10.9 (SD 7.7) vs N=25 HAMD mean 11.8 (SD 6.9) for Placebo. Clinical global impression score at baseline: Mianserin group mean 2.7 at day 0 and at day 28 mean 1.1 and for placebo at day 0 mean 2.8 and at day 28 mean 1.6. Global improvement score: Mianserin at day 28 mean was 2.0 and placebo 1.3 (P<0.05)	
Notes	Tetracyclic study. Low powered study. Medication and assessments done by GPs	
<b>Risk of bias</b>		
<b>Item</b>	<b>Authors' judgement</b>	<b>Description</b>
Allocation concealment?	Unclear	B - Unclear

**Doogan 1994**

Methods	Sertraline vs dothiepin vs placebo. Randomised controlled trial Country: UK Not sure how GPs were chosen	
Participants	N=308 patients randomized. Primary major depressive disorder according to DSM III-R aged over 18 years and have a score of 22 or more on MADRS and a severity score of 4 or more on the Clinical Global Impression scale (CGI). Exclusions >35 on MADRS, risk of suicide, pregnancy, lactation, significant physical illness, mania, benign prostatic hypertrophy, treatment with certain antihypertensive agents, antihistamines or sympathomimetic, lithium in past 3 months, resistant depression (i.e. had 8 or more	

**Doogan 1994** (Continued)

	weeks with medication or had an episode lasting over 1 year), schizophrenia or organic brain disease, epilepsy, other psychotropic medications
Interventions	7-14 days of single blind run in. Sertraline 50 mg and dothiepin 75mg for 14 days then double dose if possible for 6 weeks
Outcomes	13% (39) not evaluable. At day 42: for sertraline group MADRS mean 12.5 (SD not reported) n=83 vs dothiepin mean 14.2 (SD 4.5) n=96 and placebo mean 15.3 (SD not reported) n=90. SDs were not reported but SDs from Malt 1999 were used in analysis. The proportion responding (i.e.: => 50% reduction in MADRS) Sertraline=50/83 (60.2%), Dothiepin =48/96 (50%) & placebo 40/90 (44%). Median dose of sertraline was 50 mg and 150 mg of dothiepin. Side effects: (mainly in central nervous system, peripheral nervous system and GI system) 33/99 Sertraline, 32/108 Dothiepin and placebo 28/101. Adverse effects leading to withdrawal: 5/99 for sertraline 2/108 on dothiepin and 3/101 on placebo. Treatment withdrawal for any reason: Sertraline 16/99 Dothiepin 12/108 Placebo 11/101
Notes	Analysis was intention to treat after 1st return visit. GPs did the assessments and medication handling

**Risk of bias**

Item	Authors' judgement	Description
Allocation concealment?	Unclear	B - Unclear

**Feighner 1979**

Methods	Amitriptyline vs placebo RCT from 4 physicians in private practice in USA + 2 other university clinics
Participants	N=337 patients. 30% male. Mean age 40.2 yrs. Criteria of Feighner 1972 dysphoric mood + 5 of poor appetite, weight loss, loss of energy, agitation or retardation, loss of interest, diminished sexual drive, self reproach or guilt, poor concentration and thoughts of death or suicide. Also > 20 on HAMD, >14 on short Beck and >8 on Covi scale. Exclusions: schizophrenia, alcoholism, hysteria, antisocial personality, serious medical risks, no recent ECT or MAOI or tricyclic or tranquilliser within 5 days. 143 were unipolar and 33 bipolar. 161 not classified
Interventions	Amitriptyline 25mg 4 tablets to start increasing to 5 or 6 tabs over 4 weeks. Same for placebo. Assessment was by a psychiatrist
Outcomes	58 drop outs. Outcome: 50% reduction in HAMD score at end of study (approximated from graphs) amitriptyline 37/53 vs 13/30 placebo improved. Assume mean baseline score HAMD =36 (fig 1). At 4 weeks: Amitriptyline group mean 15.2 (SD 7.3) n=53 vs placebo = mean 21 (SD 9.6) n= 30 (see assumptions for SD in text). At 1 week: Amtriptyline HAMD mean 26.9 (SD 7.3) n=71 vs placebo HAMD mean 27 (SD 9.6) n=41. At 2 weeks: Amitriptyline mean 21.2 (SD 7.3) n=60 vs Placebo mean 25.7 (SD 9.6) n=35.

**Feighner 1979** (Continued)

	The mean dose for Amitriptyline was 4.6 tablets; placebo 5.5 tablets. Side effects not necessarily leading to treatment withdrawal: Amitriptyline 12/93 and 3/50 for placebo. Actual effects not stated. Withdrawal due to treatment failure: Amitriptyline 6/93 and placebo 9/50. Treatment withdrawal for any reason: Amitriptyline 40/93 and 20/50 for placebo	
Notes	TCA vs placebo Assessments all done by a psychiatrist but presumed patients came from primary care although cannot be certain	
<b>Risk of bias</b>		
<b>Item</b>	<b>Authors' judgement</b>	<b>Description</b>
Allocation concealment?	Yes	A - Adequate

**Hollyman 1988**

Methods	Amitriptyline vs placebo RCT 41 GPs in UK	
Participants	N=178 Amitriptyline n=67, placebo n=74; 18-64 yrs Research diagnostic criteria for major, minor or intermittent depression HAMD score $\geq 6$ . Exclusions: referral to a psychiatrist, antidepressant in previous 3 months, drug/alcohol problems, phobic, Generalised Anxiety Disorder (GAD), Obsessive Compulsive Disorder (OCD), HAMD $\geq 27$ Major depression: 67% of intervention group, 74% placebo; Minor or intermittent 33% in intervention group, 26% in placebo group	
Interventions	Amitriptyline 75mg in first week then 100mg for second week, increasing to 125-175 mg if needed. Cointervention with benzodiazepines was allowed. Psychiatrist did all assessments as home visits.	
Outcomes	21% (37) drop outs at 4 weeks. Intention to treat analysis of the 141 remaining. Results at 6 weeks: HAMD mean reduction 9.3 in Amitriptyline group and 6.1 in placebo group. Mean difference 3.2 (95% CI 1.3-5 P<0.001); HAMD mean 5.4 (SD 3.8), n=67 in Amitriptyline group vs mean 8.7 (SD 9.6) n=74 in placebo group at 6 weeks. At 1 week: HAMD mean 11 (SD 3.8) n=67 vs mean 13.5 (SD 3.5) n=74 in placebo group. At 2 weeks: mean 7.8 (SD 3.8) n= 67 in Amitriptyline group vs mean 10.4 (SD 3.5) n=74 in placebo group. At 3 weeks: mean 6.0, (SD 3.8) n=67 in Amitriptyline group vs mean 10.5 (SD 3.5) n=74 in placebo group. At 4 weeks: mean 5.0 (SD 3.8) n=67 vs mean 9.0 (SD 3.5) n=74 in placebo group. Paykel et al 1988 found amitriptyline more effective for major depression (HAMD 13-24) than minor depression (HAMD 6-12). Adverse effects leading to withdrawal: 18/67 in amitriptyline group dropped out due to dry mouth,	

**Hollyman 1988** (Continued)

	increase in appetite and weight gain. 8/74 in placebo poor compliance and 3/74 withdrawal due to treatment failure (worsening depression). Withdrawal for any reason: 23/67 in amitriptyline group and 14/74 in the placebo group	
Notes	Psychiatrist did all interviews Median dose Amitriptyline = 125mg	
<b>Risk of bias</b>		
<b>Item</b>	<b>Authors' judgement</b>	<b>Description</b>
Allocation concealment?	Yes	A - Adequate

**Lecrubier 1997**

Methods	Venlafaxine vs Imipramine vs placebo RCT GP patients seen in outpatient clinic Patients probably from France, UK & Italy (24 study sites)	
Participants	N=229 Venlafaxine n=78, Imipramine n=74, placebo n=76. 18-65 year old men and women with depressive symptoms for at least 2 weeks and regarded as needing antidepressant therapy, scored between 4 and 8 on the Raskin 3 areas scale and fulfilled the research diagnostic criteria (RDC) criteria for minor 14%, intermittent 7%, or major depression 79%. Exclusions: phobic anxiety, panic disorder, GAD, OCD, schizophrenia, bipolar, pregnant or inadequate contraception, MADRS decreased >30% during screening period, depression Newcastle Scale >7	
Interventions	7-10 day washout period. Medication day 1 was one 25 mg capsule of venlafaxine or imipramine or placebo; Day 2-4 1 capsule twice daily; Days 5-7 3 caps daily. From day 8-15 two caps 3 times daily and to remain on this for the remaining 13 week period. If the patients found the side effects intolerable could go to 1 cap 3 x daily	
Outcomes	12% (27) drop outs. At week 13: no statistical difference on MADRS scale for imipramine vs placebo. The proportion of responders on the MADRS > 50% = 66% (49/74) for imipramine and 63% (48/76) for placebo. Neither baseline nor end value standard deviations were reported so SDs from literature were used (see assumptions in text). At week 1: n=74, MADRS mean 20.9 (SD 4.5) for imipramine group and n=76 MADRS mean 19.2 (SD 4.0) for placebo (p<0.05) At week 2: n=74 mean 18, (SD 4.5) for imipramine group vs n=76 mean 16.2, (SD 4.0) for placebo group. At week 3: n=74 mean 16.4 (SD 4.5) for Imipramine vs n=76 mean 15.2 (SD 4). At week 4: n=74 mean 14 (SD 4.5) for Imipramine group vs n=76 mean 14.2 (SD 4) for placebo group	
Notes	Treated by a psychiatrist. Mean daily dose was 112mg imipramine	
<b>Risk of bias</b>		
<b>Item</b>	<b>Authors' judgement</b>	<b>Description</b>



**Lecrubier 1997** (Continued)

Allocation concealment?	Unclear	B - Unclear
-------------------------	---------	-------------

**Lepola 2001 Citalopram**

Methods	Citalopram versus placebo Double blind RCT from 8 countries including European countries and Canada Includes the escitalopram arm	
Participants	N=314. (n=160 in citalopram group; n=154 in placebo group). Primary care patients 18-65 years and fulfilling the DSM IV criteria for MDD with a baseline Montgomery Asberg rating of $\geq 22$ and $\leq 40$ . Patients mainly Caucasian, mean age 43 years (SD 11). Exclusions: schizophrenia, bipolar, OCD, eating disorder, mental retardation, MADRS $\geq 5$ or = 5 item 10 (suicidal thoughts), current treatment on psychotropic drugs except benzodiazepines, ECT, psychotherapy or behavioural therapy	
Interventions	20mg citalopram, which could be doubled at weeks 4 and 6	
Outcomes	Withdrawal for all reasons: Citalopram group 8/160 (5%), and 15/154 (10%) in placebo group. Responders $\geq 50\%$ reduction in MADRS = 84/159 in citalopram group and 74/154 in placebo	
Notes	Intention to treat analysis with last observation carried forward	

**Risk of bias**

Item	Authors' judgement	Description
Allocation concealment?	Unclear	B - unclear

**Lepola 2001 Escitalopram**

Methods	Escitalopram versus placebo Double blind RCT from 8 countries including European countries and Canada Includes the citalopram arm	
Participants	N=309 (10-20mg/day Escitalopram n=155; Placebo n=154). Primary care patients 18-65 years and fulfilling the DSM IV criteria for MDD with a baseline Montgomery Asberg rating of $\geq 22$ and $\leq 40$ . Patients mainly Caucasian, mean age 43 years (SD 11). Exclusions: schizophrenia, bipolar, OCD, eating disorder, mental retardation, MADRS $\geq 5$ on item 10 (suicidal thoughts), current treatment on psychotropic drugs except benzodiazepines, ECT, psychotherapy or behavioural therapy	
Interventions	After 1 week of single blind placebo phase 8 weeks of 10mg/day Escitalopram or placebo. After 4-6 weeks could double dose of drugs	
Outcomes	Withdrawal for all reasons 9/155 (6%) in Escitalopram group, and 15/154 (10%) in placebo group. Responders $\geq 50\%$ reduction in MADRS = 93/146 in Escitalopram group and 68/140 in placebo group. On MADRS at the 8 week end of trial Escitalopram mean 14.2 (SD not reported) n=146; Citalopram mean 15.4 (SD not reported) and n = 139; Placebo mean = 16.6 (SD not reported) n = 139	

**Lepola 2001 Escitalopram** (Continued)

Notes	Intention to treat analysis with last observation carried forward	
<b>Risk of bias</b>		
<b>Item</b>	<b>Authors' judgement</b>	<b>Description</b>
Allocation concealment?	Unclear	B - Unclear

**Malt 1999**

Methods	Sertraline vs Mianserin vs placebo RCT Country: Norway from 61 GPs	
Participants	N=372. 18-79 years and symptoms of depression >2 weeks, severe enough to require treatment; Clinical Global impression score of at least 3, >=20 on MADRS score, <25% reduction in MADRS score over observation week. Exclusions: Dementia, schizophrenia, bipolar, organic mental disorder, not responding before to amitriptyline 150mg per day or equivalent, previous failure to respond to SSRI or mianserin, alcoholism, misuse of study drugs, Myocardial infarct in previous 3 months, epilepsy, hypotension, not willing to use safe contraception. 86 to 89% of participants had major depression according to DSM III-R	
Interventions	All patients given emotional support and counselling from GPs. Interventions: Sertraline 50 mg/day increased to 100 mg by 3rd week with tirations up to 150 mg after 4 weeks in non-responders to a maximum of 200 mg at 6 weeks. Mianserin started at 30mg increased to 60 mg at 1 week then increasing if not responding to 90 mg/day after 4 weeks to a maximum of 120 mg/day after 6 weeks if needed. No information given about how the placebo was increased. Given for 24 weeks	
Outcomes	36% drop outs over 24 weeks. At follow up: MADRS for Sertraline group mean=11.9 (SD 10.3) n=122, Mianserin group mean=11.3 (SD 9.1) n=121, and placebo group mean=14 (SD 10) n=129. The dose was titrated up to 120mg/day. Baseline SDs used as approximations because SDs for outcome values not published. Responders to treatment Sertraline (74/122), Mianserin = (65/121) and placebo = (60/129)	
Notes	Assumes that GPs gave the medication and did the assessments. Average drug level of Sertraline was 114.6 mg/day and Mianserin 78 mg/day	
<b>Risk of bias</b>		
<b>Item</b>	<b>Authors' judgement</b>	<b>Description</b>
Allocation concealment?	Yes	A - Adequate

### Mynors-Wallis 1995

Methods	Amitriptyline vs placebo vs problem solving RCT. Participants selected from 26 GPs from 15 practices in United Kingdom	
Participants	N=91 (82 in ITT analysis). 18-65 years with research diagnostic criteria (RDC) for major depression and $\geq 13$ for HAMD score. Mean age 37-37.3 years in different groups and 23% male	
Interventions	12 weeks of problem solving vs amitriptyline 150 mg/day vs placebo	
Outcomes	29% drop outs. At 12-weeks: HAMD for amitriptyline group n=27, mean = 8.1 (SD 7.1) vs placebo n=26, mean = 11.8 (SD 7.3) Responders (HAMD $\leq 7$ ): 16/31 in Amitriptyline group, and 8/30 in placebo group. Mean dose Amitriptyline was 139 mg/day. Adverse effects leading to withdrawal: 3/31 for amitriptyline and 2/30 in the placebo group. Withdrawal due to treatment failure: 1/31 for amitriptyline and 8/30 in the placebo group. Treatment withdrawal for any reason: 6/31 for amitriptyline and 18/30 for placebo group	
Notes	1 psychiatrist and 2 research GPs	
<b>Risk of bias</b>		
<b>Item</b>	<b>Authors' judgement</b>	<b>Description</b>
Allocation concealment?	Unclear	B - Unclear

### Philipp 1999

Methods	Imipramine vs placebo vs hypericum extract RCT. Participants selected from 18 general practitioners in Germany	
Participants	N=263 (251 in ITT analysis). Age 18-65 years (mean=47 years) Imipramine n=105, placebo n=46, hypericum extract n=100. ICD-10 moderate depressive episode, HAMD $\geq 18$ , a clinical global impression rating of severity (item 1) of moderately, markedly or severely ill, depression duration of 4 weeks to 2 years. Exclusion: mild or severe depressive disorder, bi-polar, alcohol or drug dependence, suicidal risk, long term use of lithium or carbamazepine, other psychotropic drugs, > 3 months of benzodiazepines general or specific contraindications to imipramine	
Interventions	Patients screened for 1 week before treatment. All patients treated with 3 capsules of trial drug daily. Imipramine started at 50 mg on the first treatment day. 75 mg days 2-4, then 100 mg. Identical placebo for placebo and Hypericum. Duration 8 weeks	
Outcomes	4.5% (12) drop outs. At 8 weeks: HAMD mean = 8 (SD 4.2) n=109 in Imipramine group, and mean = 10.6 (SD 4.0) n=46 in placebo group. At 1 week: HAMD n=105 mean = 20.7 (SD 4.2) in Imipramine group vs n=46 mean = 19.2 (SD 4.0) in placebo group. At 2 weeks n=105 mean = 16.7 (SD 4.2) vs n=47 mean = 18 (SD 4.0).	

**Philipp 1999** (Continued)

	<p>At 4 weeks: n=105 mean = 12.7 (SD 4.2) vs n=47 mean = 14.2 (SD 4.0).            Clinical Global Impression scale            proportion (much or very much) responding to Imipramine 70/105 and 29/46 in placebo group.            Side effects not necessarily leading to withdrawal: Imipramine 51/110 and 9/47 in placebo.            Any adverse events: 19% in placebo and 46% in imipramine group. Dry mouth: 13% in placebo and 38% in Imipramine group. Nausea: 2% in placebo and 11% in Imipramine group, Constipation: 6% and 6%, respectively.            Headache: 2% and 6%.            Palpitations: 0% and 6%.            Dizziness 2% and 6%.            Adverse effects leading to withdrawal: 0/47 from placebo group and 1/110 from imipramine group</p>
--	---

Notes	<p>Not clear who treated patients. Authors are either psychiatrists or psychologists.            Analysis was by Intention to treat</p>
-------	---

**Risk of bias**

Item	Authors' judgement	Description
Allocation concealment?	Yes	A - Adequate

**Thompson 1989**

Methods	<p>Dothiepin vs placebo.            RCT from 7 GPs in the United Kingdom</p>
Participants	<p>N=52. (6 men and 46 women). Mean duration of depression 9.9 weeks. Diagnosed by GPs by their usual criteria, not had treatment for depression in previous 6 months. Exclusions: pregnant, breastfeeding, allergy to Dothiepin, glaucoma, urinary retention, epilepsy, cardiovascular disorder or impaired renal or hepatic function.            Also excluded were antipsychotic treatment in the past 5 years, requiring referral to hospital or immediate medication, or unlikely to be able to complete self rating questionnaires.            Participants were classified post-hoc into categories according to Research Diagnostic criteria for major depression and endogenous depression and the Newcastle index for endogenous depression.            58% of patients had major depression.</p>
Interventions	<p>75mg of Dothiepin which could be increased to 150 mg after 2 weeks or placebo for 4 weeks. HAMD in Dothiepin group mean = 6.6 (SD 7.3) n=20 &amp; placebo group mean = 9.5 (SD 9.6) n=21</p>
Outcomes	<p>21% drop outs by 2 weeks. Using a last value carried forward there were 20 patients on Dothiepin and 21 patients on placebo. At 4 weeks: HAMD in Dothiepin group n=20 mean = 9.0 (SD 7.3) vs placebo group n=21, mean = 10 (SD 9.6). At 3 weeks: n=21 mean = 9.5 (SD 7.3) vs n=20 mean = 10 (SD 9.6). At 2 weeks the HAMD in the Dothiepin group n=20 mean = 11 (SD 7.3) vs placebo n= 21 mean = 11 (SD 9.6). At one week for Dothiepin n=20 mean =16, (SD 7.3) vs placebo n=21 mean = 15 (SD 9.6)</p>
Notes	<p>GPs did the assessments. Patients in the study were very similar to patients given antidepressants in general practice            The author is not sure if the data is available but is happy with our approximations of the SDs</p>

**Thompson 1989** (Continued)

<i>Risk of bias</i>		
Item	Authors' judgement	Description
Allocation concealment?	Unclear	B - Unclear

**Thomson 1982**

Methods	Amitriptyline vs placebo vs L-tryptophan vs combination L-tryptophan and amitriptyline RCT in 5 Scottish group general practices.	
Participants	N=115. Amitriptyline n=31 placebo n=28 (2 other arms L-tryptophan n=29; combination Amitriptyline + L-tryptophan n=27) 127 women & 34 men. Patients 18-65 yrs HMAD of ≥12, depressed for ≥ 2 weeks & considered by their GPs to need antidepressant medication but not need psychiatric referral. Exclusions: Tricyclic antidepressants in previous 2 weeks or contraindications to tricyclics	
Interventions	1 week run-in period then 25 mg amitriptyline 3x daily for 1 week then 2 tablets 3 x daily for remaining 11 weeks. Could also take diazepam 5mg or nitrazepam as hypnotic but had to continue this throughout study. 2 other arms to study which involved amitriptyline + tryptophan & tryptophan. Only those on active medication had blood levels for amitriptyline & tryptophan. 12 week duration	
Outcomes	37% (43) drop outs. At 12 weeks HAMD for amitriptyline group mean = 4.9 (SD 4.9) n=21 vs placebo group mean = 7.93 (SD 4.2) n=15. At 4 weeks: Amitriptyline group n=26 mean = 6.85 (SD 7.3) vs placebo group n=19 mean = 11.55 (SD 9.6). At 12 weeks: complete remission (i.e. a fall of 4 on HAMD) 67% (14/21) in amitriptyline group vs 33% (5/15) in placebo group (estimates from graphs). 80% in active group had positive blood levels for amitriptyline. Side effects not necessarily leading to withdrawal: amitriptyline 7/31 vs placebo 0/28 Adverse effects leading to withdrawal: amitriptyline 7/31 vs placebo 0/28 Withdrawal due to treatment failure: Amitriptyline 0/31 vs placebo 8/28 Treatment withdrawal for any reason: Amitriptyline 10/31 vs placebo 13/28	
Notes	Alternating visit assessments done by psychiatrist and patient's own GP 2-weekly. Good correspondence of assessments. Research psychiatrist ratings used in analysis (Weeks 0,4, 8 and 12)	

<i>Risk of bias</i>		
Item	Authors' judgement	Description
Allocation concealment?	Unclear	B - Unclear

**Wade 2002**

Methods	Escitalopram vs placebo RCT in Canada, Estonia, France, Netherland, UK primary care in 40 centres	
Participants	N=380 (Escitalopram n=191, Placebo n=189). DSM IV major depression $\geq 22$ and $\leq 40$ . Age 18-65 years. Excluded: Schizophrenia, bipolar, OCD, mental retardation, suicidal thoughts. Psychotropic except benzodiazepines for insomnia	
Interventions	Escitalopram 10 mg vs placebo for 8 weeks	
Outcomes	<p>16% (60) drop outs.</p> <p>At 8 weeks: Escitalopram n=191 MADRS mean = 14.3 (SD 9.1) vs placebo n=189 mean = 16.7 (SD 9.1).</p> <p>Responders: Escitalopram 55% (105/191) vs placebo 42% (79/189).</p> <p>Side effects not necessarily leading to withdrawal: Escitalopram 59% (112/191) vs placebo 56% (105/189). Adverse effects leading to withdrawal : Escitalopram 4.7% (9/191) vs 1.1% (2/189) for placebo.</p> <p>Withdrawal due to treatment failure: 3.7% (7/191) for Escitalopram group vs 6.9% (13/189) for placebo group.</p>	
Notes	Not clear how administered the drugs and questionnaires	
<b>Risk of bias</b>		
<b>Item</b>	<b>Authors' judgement</b>	<b>Description</b>
Allocation concealment?	Unclear	B - Unclear

**Characteristics of excluded studies [ordered by study ID]**

Study	Reason for exclusion
Andersen 1993	Comorbidity (stroke)
Bakish 1992	Not a primary care setting
Barrett 1999	Study included secondary care patients as well as primary care patients
Barrrett 2001	Treatment in this study was undertaken by psychiatrists
Borsun 1992	Comorbidity (COPD)
Gomez 1968	Compared amitriptyline with an antipsychotic
Houston 1983	Used the Leeds depression scale
Jacobs 1965	A monoamine oxidase inhibitor

(Continued)

Katz 2005	All medications combined, no single drug vs placebo
Laakman 1995	Patients from psychiatrists and outpatient clinics
Lehmann 1976	Not a true RCT (a CCT)
Montgomery 1998	Patients were from psychiatrists (i.e., not in primary care setting)
O'Hara 1978	Maprotiline compared with fluphenazine/nortriptyline; placebo was also used, but delivered in combination with active treatments and not as a comparator
Paykel 1988	Primary data presented in Hollyman 1988 (see Characteristics of included studies table)
Rickels 1968	Iprindole not in current clinical use
Rickels 1971	No single antidepressant vs placebo
Rickels 1991	Not primary care setting
Schiffer 1975	No single antidepressant vs placebo
SCTG 1985	Patients were of a mixed population (both anxiety and depression)
Thompson 1994	Examined data originating from Doogan 1994 (included in this review)

## DATA AND ANALYSES

### Comparison 1. TCAs versus placebo

Outcome or subgroup title	No. of studies	No. of participants	Statistical method	Effect size
1 Depression symptoms at post-treatment	13	1233	Std. Mean Difference (IV, Random, 95% CI)	-0.49 [-0.67, -0.32]
2 Clinical response at post-treatment	8	1058	Risk Ratio (M-H, Fixed, 95% CI)	1.24 [1.11, 1.38]
3 Occurrence of adverse effects at post-treatment	10	1015	Risk Ratio (M-H, Fixed, 95% CI)	2.01 [1.59, 2.55]
4 Withdrawal from trials at post-treatment	13		Risk Ratio (M-H, Fixed, 95% CI)	Subtotals only
4.1 Adverse effects	11	1187	Risk Ratio (M-H, Fixed, 95% CI)	2.14 [1.41, 3.26]
4.2 Treatment failure	8	769	Risk Ratio (M-H, Fixed, 95% CI)	0.40 [0.27, 0.58]
4.3 Any reason	11	1027	Risk Ratio (M-H, Fixed, 95% CI)	1.02 [0.84, 1.24]
5 Depression symptoms: 1-4 week timepoints	9		Std. Mean Difference (IV, Random, 95% CI)	Subtotals only
5.1 1 week	8	691	Std. Mean Difference (IV, Random, 95% CI)	-0.20 [-0.59, 0.18]
5.2 2 weeks	6	627	Std. Mean Difference (IV, Random, 95% CI)	-0.24 [-0.62, 0.14]
5.3 3 weeks	5	464	Std. Mean Difference (IV, Random, 95% CI)	-0.38 [-1.01, 0.26]
5.4 4 weeks	9	705	Std. Mean Difference (IV, Random, 95% CI)	-0.50 [-0.78, -0.23]
6 Clinical response: 1-4 week timepoints	3		Risk Ratio (M-H, Random, 95% CI)	Subtotals only
6.1 2 weeks	3	304	Risk Ratio (M-H, Random, 95% CI)	1.78 [0.87, 3.64]
6.2 4 weeks	3	278	Risk Ratio (M-H, Random, 95% CI)	1.66 [0.75, 3.70]
7 Depression symptoms: dosage of TCAs	13		Std. Mean Difference (IV, Random, 95% CI)	Subtotals only
7.1 >100mg per day	10	1028	Std. Mean Difference (IV, Random, 95% CI)	-0.50 [-0.71, -0.29]
7.2 ≤100mg per day	3	223	Std. Mean Difference (IV, Random, 95% CI)	-0.51 [-0.80, -0.22]
7.3 ≤75 mg per day	2	72	Std. Mean Difference (IV, Random, 95% CI)	-0.31 [-0.78, 0.16]
8 Clinical response: dosage of TCAs	7		Risk Ratio (M-H, Fixed, 95% CI)	Subtotals only
8.1 >100mg per day	7	907	Risk Ratio (M-H, Fixed, 95% CI)	1.27 [1.13, 1.44]
9 Depression symptoms: UK vs USA/European-based studies	11		Mean Difference (IV, Random, 95% CI)	Subtotals only
9.1 UK-based studies	6	607	Mean Difference (IV, Random, 95% CI)	-1.83 [-3.32, -0.34]
9.2 USA or European-based studies	5	581	Mean Difference (IV, Random, 95% CI)	-2.82 [-3.61, -2.03]
10 Clinical response: UK vs USA/European-based studies	8		Risk Ratio (M-H, Fixed, 95% CI)	Subtotals only
10.1 UK-based studies	5	574	Risk Ratio (M-H, Fixed, 95% CI)	1.28 [1.11, 1.49]
10.2 USA or European-based studies	3	484	Risk Ratio (M-H, Fixed, 95% CI)	1.19 [1.00, 1.40]
11 Depression symptoms: approximated vs non-approximated data	13		Std. Mean Difference (IV, Random, 95% CI)	Subtotals only



11.1 Approximated data	7	886	Std. Mean Difference (IV, Random, 95% CI)	-0.46 [-0.73, -0.18]
11.2 Non-approximated data	6	347	Std. Mean Difference (IV, Random, 95% CI)	-0.39 [-0.79, 0.01]
12 Clinical response: approximated vs non-approximated data	8		Risk Ratio (M-H, Fixed, 95% CI)	Subtotals only
12.1 Approximated data	5	660	Risk Ratio (M-H, Fixed, 95% CI)	1.28 [1.12, 1.46]
12.2 Non-approximated data	3	398	Risk Ratio (M-H, Fixed, 95% CI)	1.17 [0.96, 1.42]
13 Depression symptoms: high vs low quality studies	13		Std. Mean Difference (IV, Random, 95% CI)	Subtotals only
13.1 High quality studies	7	757	Std. Mean Difference (IV, Random, 95% CI)	-0.60 [-0.80, -0.41]
13.2 Low quality studies	6	486	Std. Mean Difference (IV, Random, 95% CI)	-0.35 [-0.63, -0.07]
14 Clinical response: high vs low quality studies	8		Risk Ratio (M-H, Fixed, 95% CI)	Subtotals only
14.1 High quality studies	5	721	Risk Ratio (M-H, Fixed, 95% CI)	1.31 [1.14, 1.51]
14.2 Low quality studies	3	337	Risk Ratio (M-H, Fixed, 95% CI)	1.11 [0.94, 1.32]
15 Depression symptoms: major depression diagnosis	2	235	Mean Difference (IV, Fixed, 95% CI)	-1.37 [-2.52, -0.22]
16 Depression symptoms: use of different depression scales	13		Mean Difference (IV, Random, 95% CI)	Subtotals only
16.1 Montgomery-Asberg scale	3	585	Mean Difference (IV, Random, 95% CI)	-1.24 [-2.90, 0.42]
16.2 Hamilton Depression Rating Scale	10	648	Mean Difference (IV, Random, 95% CI)	-3.17 [-3.94, -2.39]
16.3 Hamilton Depression Rating Scale for scores <8	4	222	Mean Difference (IV, Random, 95% CI)	-3.38 [-4.48, -2.29]
17 Clinical response: greatly improved/remission	5	752	Risk Ratio (M-H, Fixed, 95% CI)	1.29 [1.11, 1.50]
18 Depression symptoms: 50% or more GP assessors	7	765	Std. Mean Difference (IV, Fixed, 95% CI)	-0.48 [-0.62, -0.33]
19 Clinical response: 50% or more GP assessors	5	684	Risk Ratio (M-H, Fixed, 95% CI)	1.19 [1.03, 1.39]
20 Depression symptoms: studies with no competing interest	6	363	Std. Mean Difference (IV, Fixed, 95% CI)	-0.68 [-0.90, -0.47]
21 Clinical response: studies with no competing interest	3	285	Risk Ratio (M-H, Fixed, 95% CI)	1.59 [1.28, 1.96]

## Comparison 2. SSRIs versus placebo

Outcome or subgroup title	No. of studies	No. of participants	Statistical method	Effect size
1 Clinical response at post-treatment	5	1269	Risk Ratio (M-H, Fixed, 95% CI)	1.28 [1.15, 1.43]
2 Occurrence of adverse effects at post-treatment	3	831	Risk Ratio (M-H, Fixed, 95% CI)	1.03 [0.87, 1.21]
3 Withdrawal from trials at post-treatment	3		Risk Ratio (M-H, Fixed, 95% CI)	Subtotals only
3.1 Adverse effects	3	831	Risk Ratio (M-H, Fixed, 95% CI)	2.44 [1.22, 4.86]
3.2 Treatment failure	2	631	Risk Ratio (M-H, Fixed, 95% CI)	0.56 [0.37, 0.86]
3.3 Any reason	2	580	Risk Ratio (M-H, Fixed, 95% CI)	1.17 [0.80, 1.73]

Antidepressants versus placebo for depression in primary care (Review)

Copyright © 2009 The Cochrane Collaboration. Published by John Wiley & Sons, Ltd.

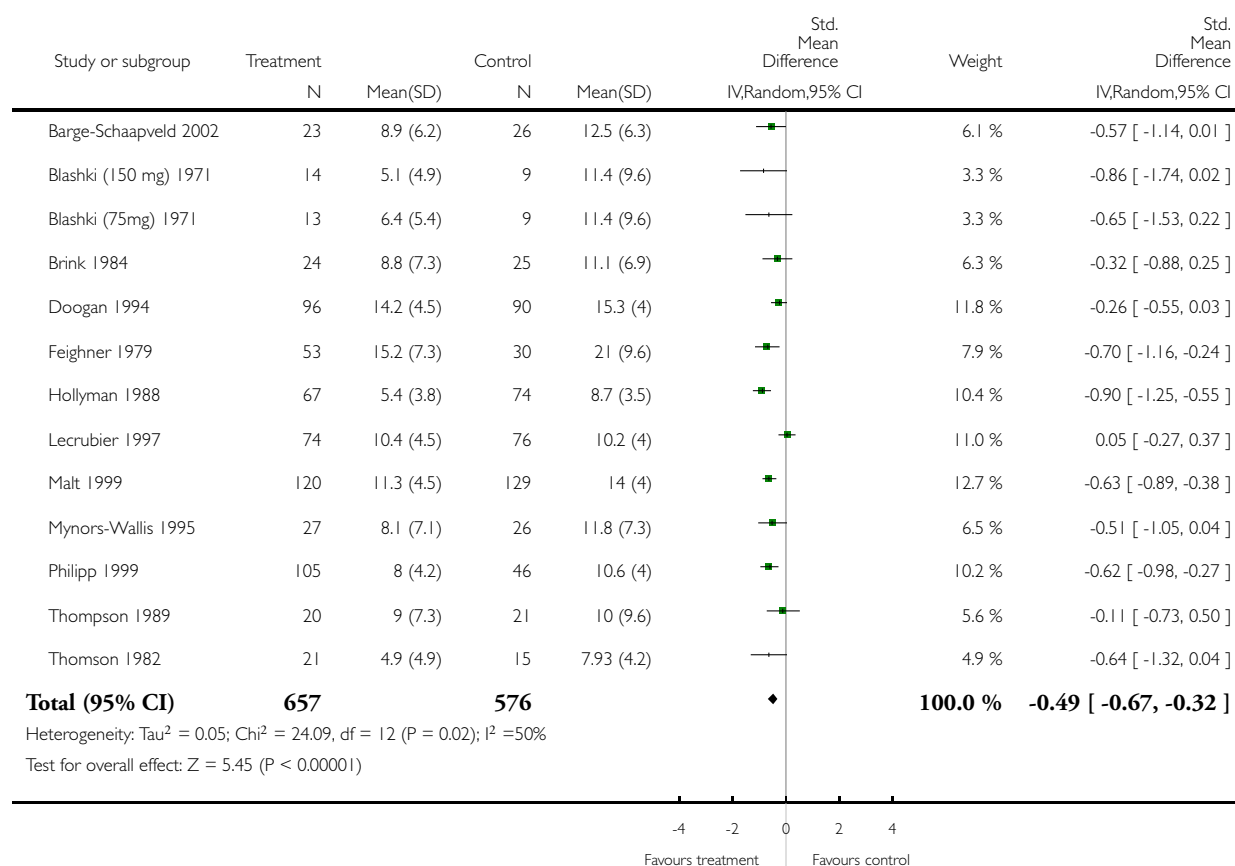
4 Clinical response: UK vs USA/European-based studies	5	1269	Risk Ratio (M-H, Fixed, 95% CI)	1.30 [1.15, 1.46]
4.1 UK-based studies	2	550	Risk Ratio (M-H, Fixed, 95% CI)	1.37 [1.13, 1.66]
4.2 USA/European-based studies	3	719	Risk Ratio (M-H, Fixed, 95% CI)	1.25 [1.08, 1.44]
5 Clinical response: high quality studies	2	424	Risk Ratio (M-H, Fixed, 95% CI)	1.32 [1.10, 1.59]
6 Clinical response: major depression diagnosis	4	1018	Risk Ratio (M-H, Fixed, 95% CI)	1.29 [1.13, 1.48]
7 Depression symptoms: use of Montgomery-Asberg scale	5	1239	Mean Difference (IV, Fixed, 95% CI)	-2.20 [-3.29, -1.12]
8 Clinical response: use of Montgomery-Asberg scale	5	1269	Risk Ratio (M-H, Fixed, 95% CI)	1.28 [1.15, 1.43]

### Analysis 1.1. Comparison 1 TCAs versus placebo, Outcome 1 Depression symptoms at post-treatment.

Review: Antidepressants versus placebo for depression in primary care

Comparison: 1 TCAs versus placebo

Outcome: 1 Depression symptoms at post-treatment

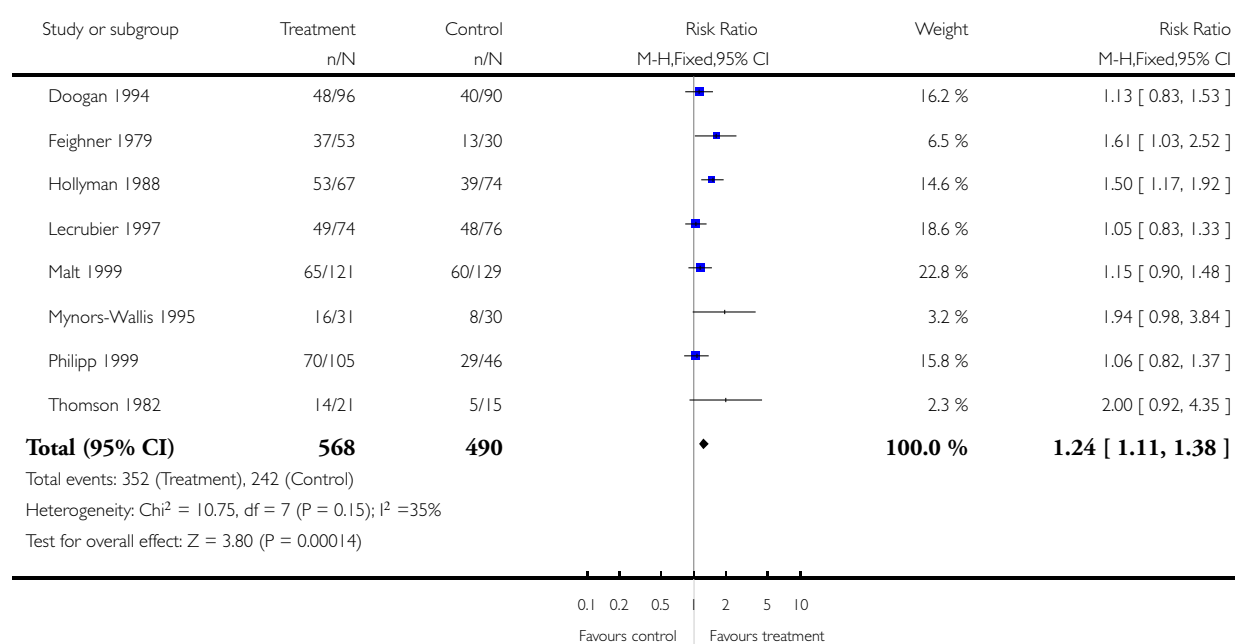


## Analysis 1.2. Comparison 1 TCAs versus placebo, Outcome 2 Clinical response at post-treatment.

Review: Antidepressants versus placebo for depression in primary care

Comparison: 1 TCAs versus placebo

Outcome: 2 Clinical response at post-treatment

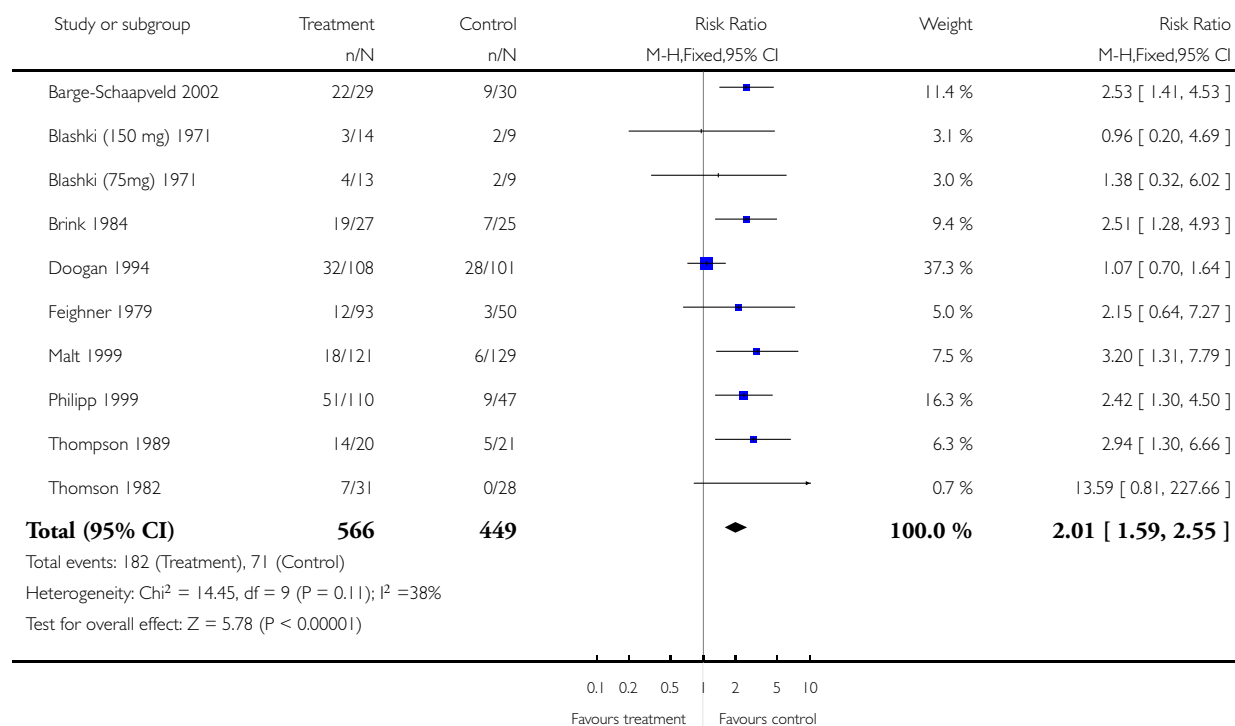


### Analysis 1.3. Comparison 1 TCAs versus placebo, Outcome 3 Occurrence of adverse effects at post-treatment.

Review: Antidepressants versus placebo for depression in primary care

Comparison: 1 TCAs versus placebo

Outcome: 3 Occurrence of adverse effects at post-treatment

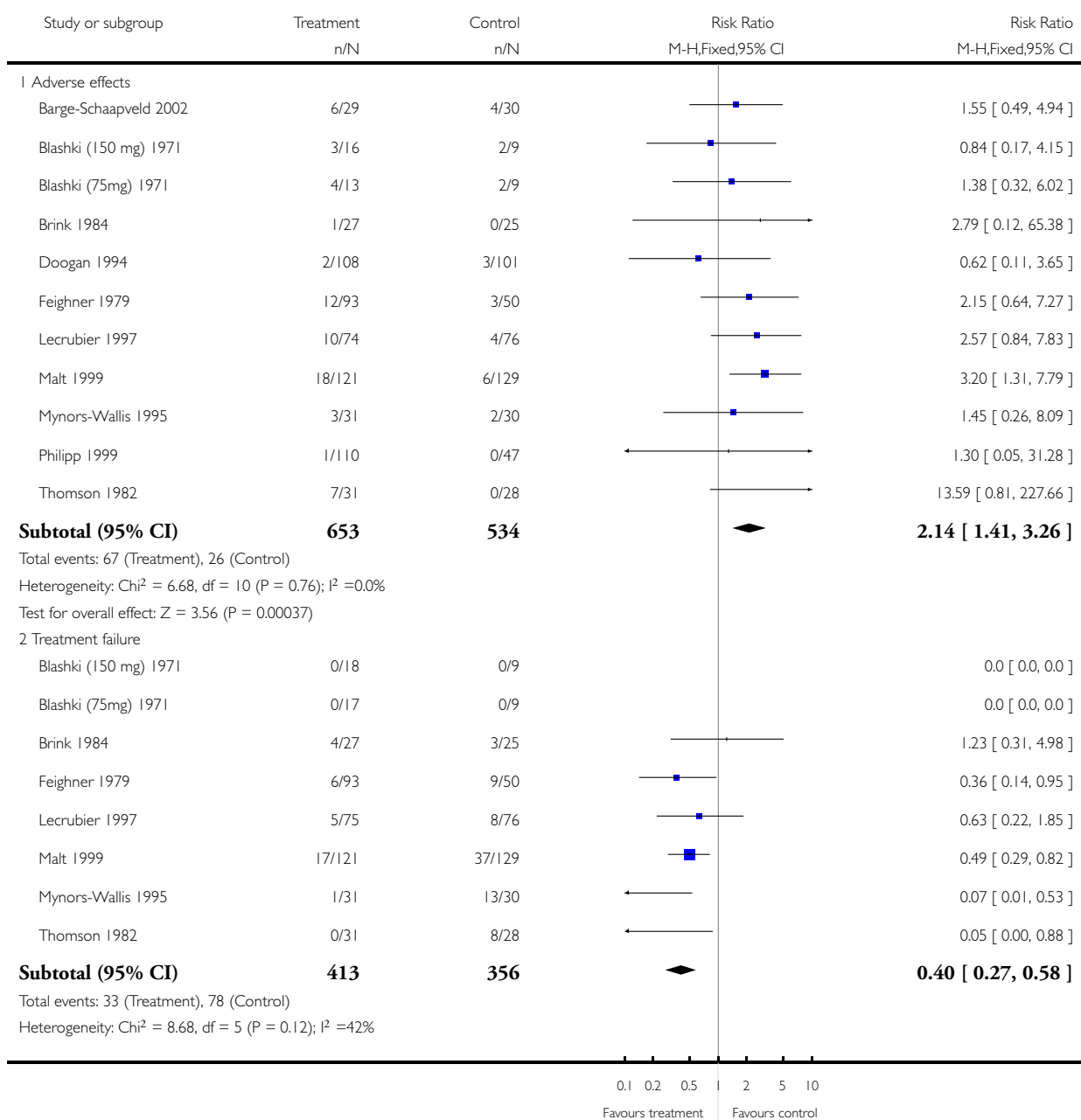


### Analysis 1.4. Comparison 1 TCAs versus placebo, Outcome 4 Withdrawal from trials at post-treatment.

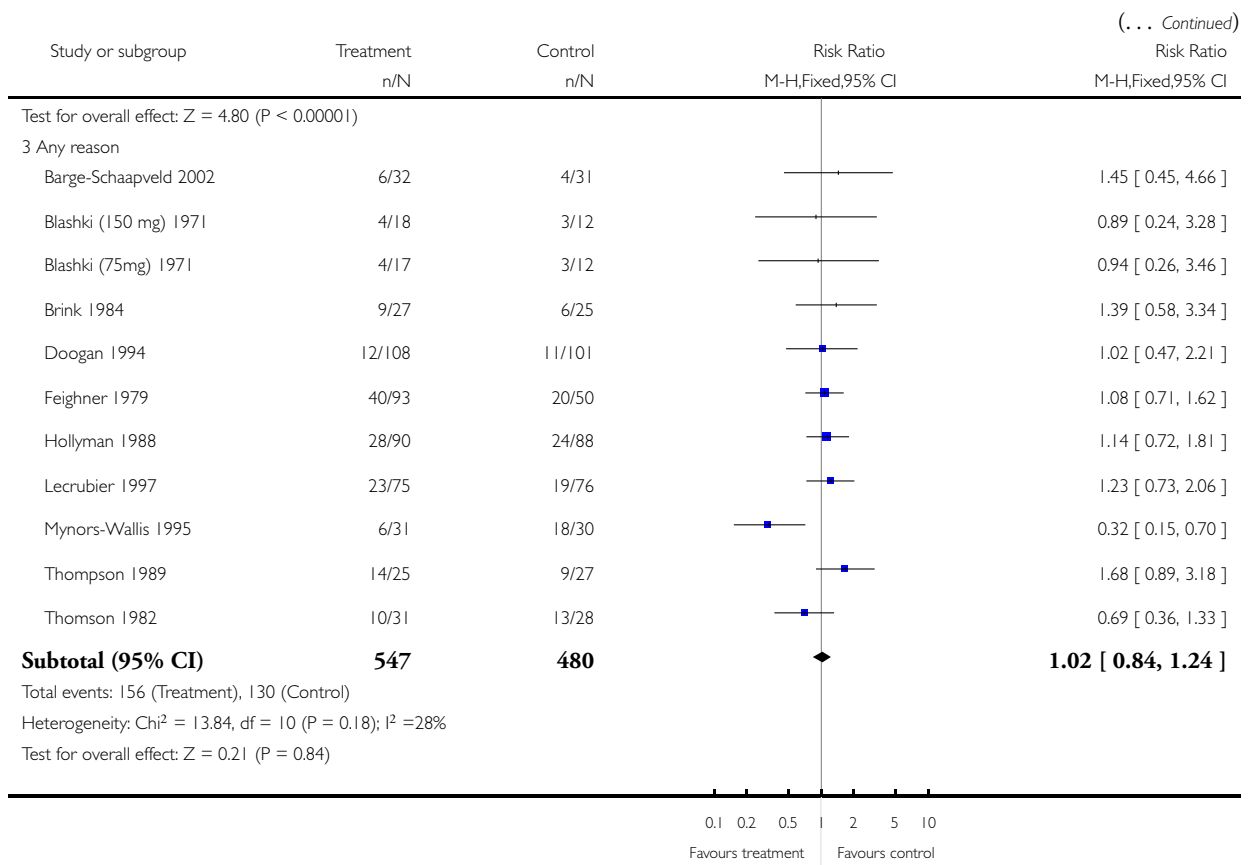
Review: Antidepressants versus placebo for depression in primary care

Comparison: 1 TCAs versus placebo

Outcome: 4 Withdrawal from trials at post-treatment



(Continued . . .)

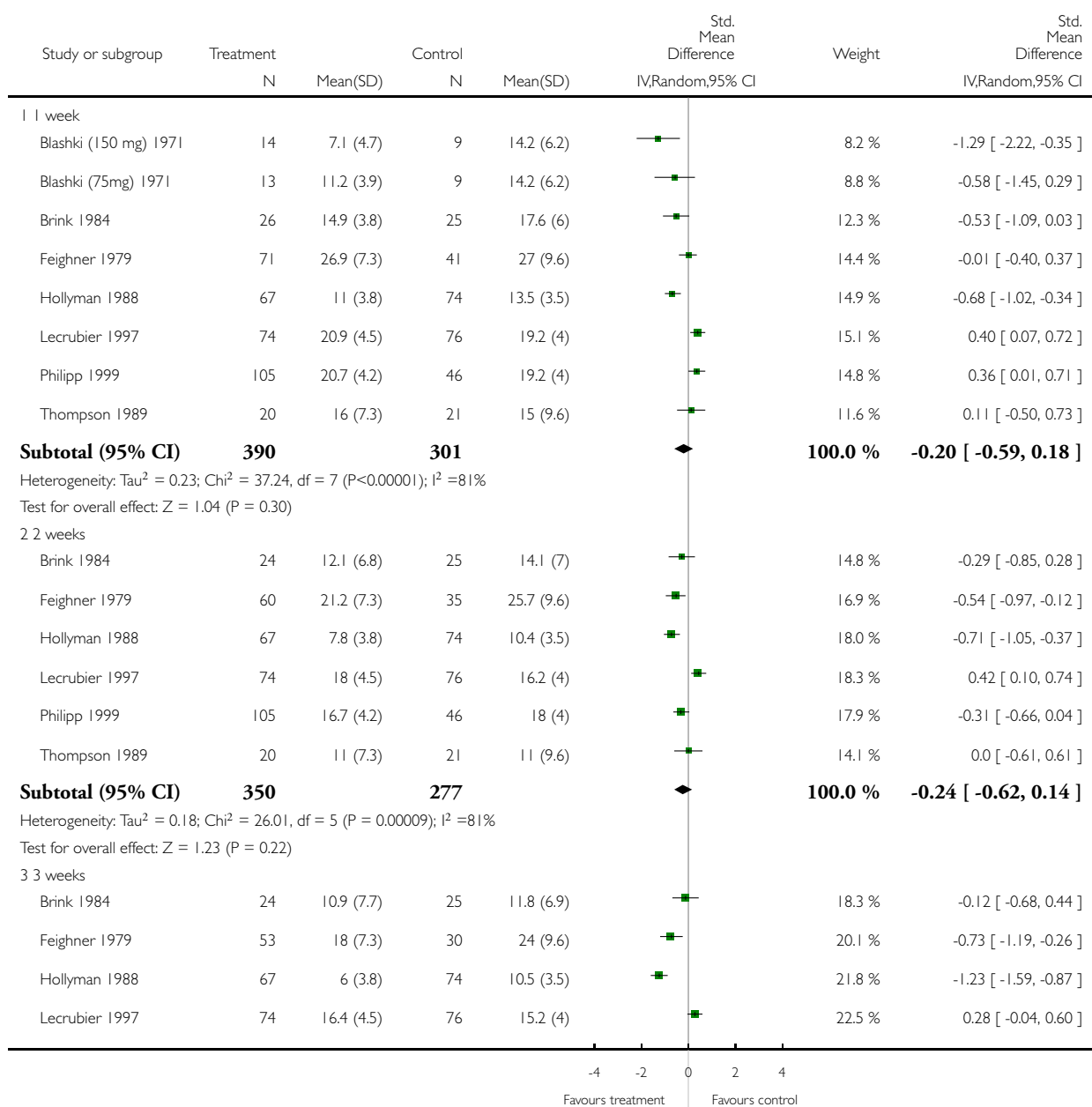


## Analysis 1.5. Comparison 1 TCAs versus placebo, Outcome 5 Depression symptoms: 1-4 week timepoints.

Review: Antidepressants versus placebo for depression in primary care

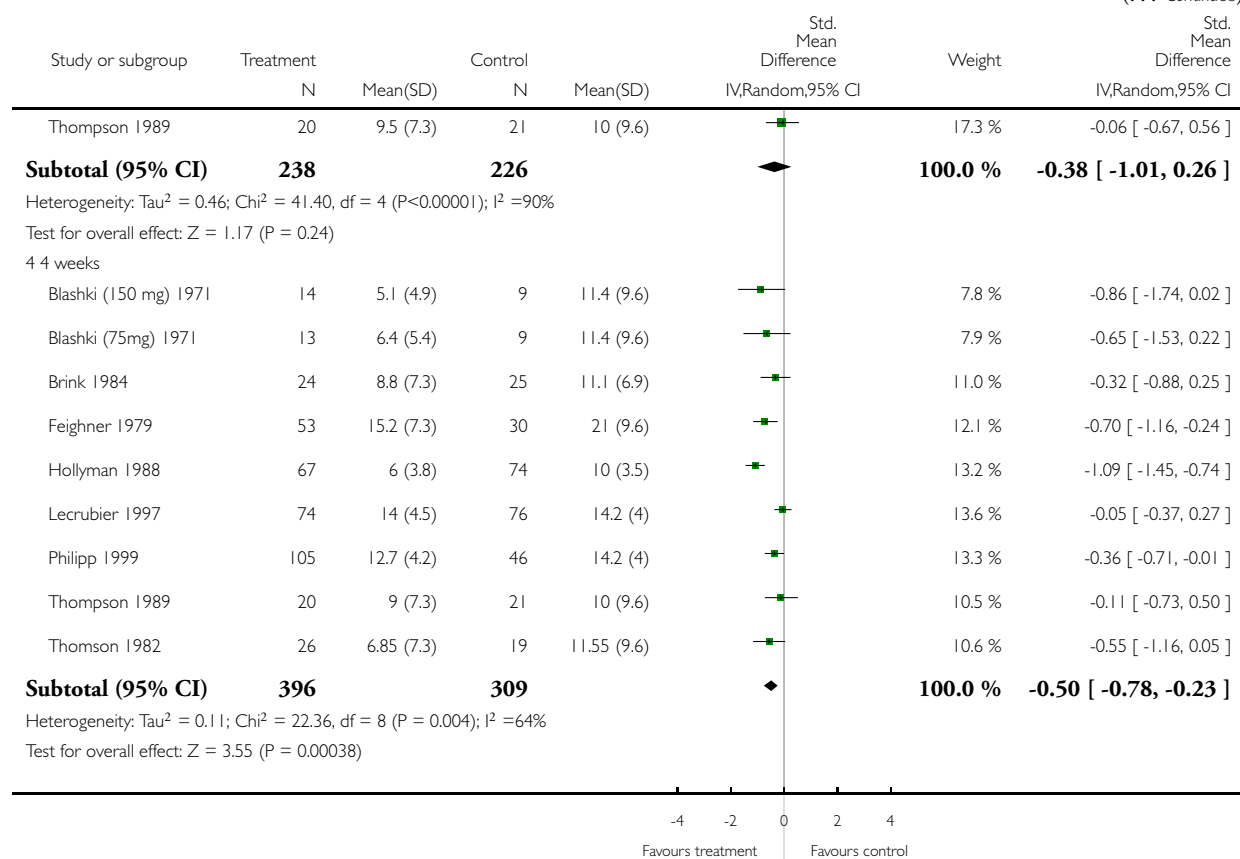
Comparison: 1 TCAs versus placebo

Outcome: 5 Depression symptoms: 1-4 week timepoints



(Continued . . .)

(... Continued)



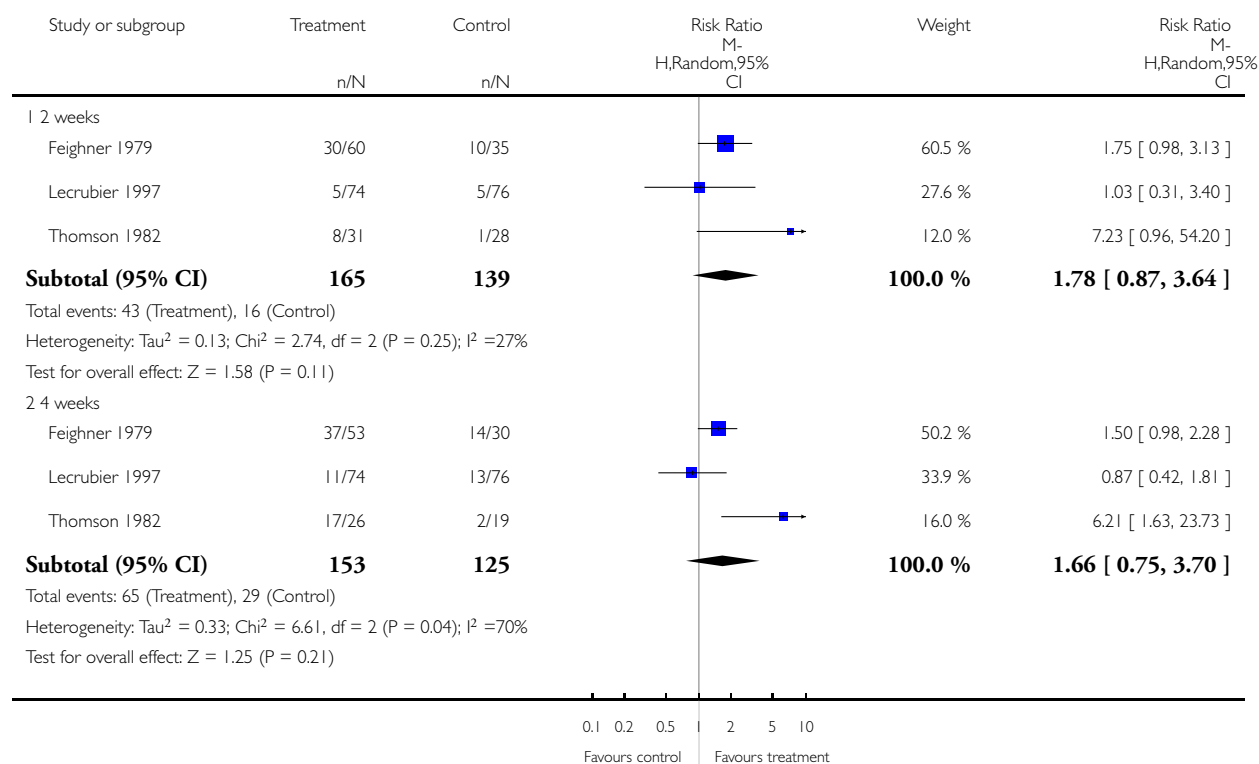


### Analysis 1.6. Comparison 1 TCAs versus placebo, Outcome 6 Clinical response: 1-4 week timepoints.

Review: Antidepressants versus placebo for depression in primary care

Comparison: 1 TCAs versus placebo

Outcome: 6 Clinical response: 1-4 week timepoints

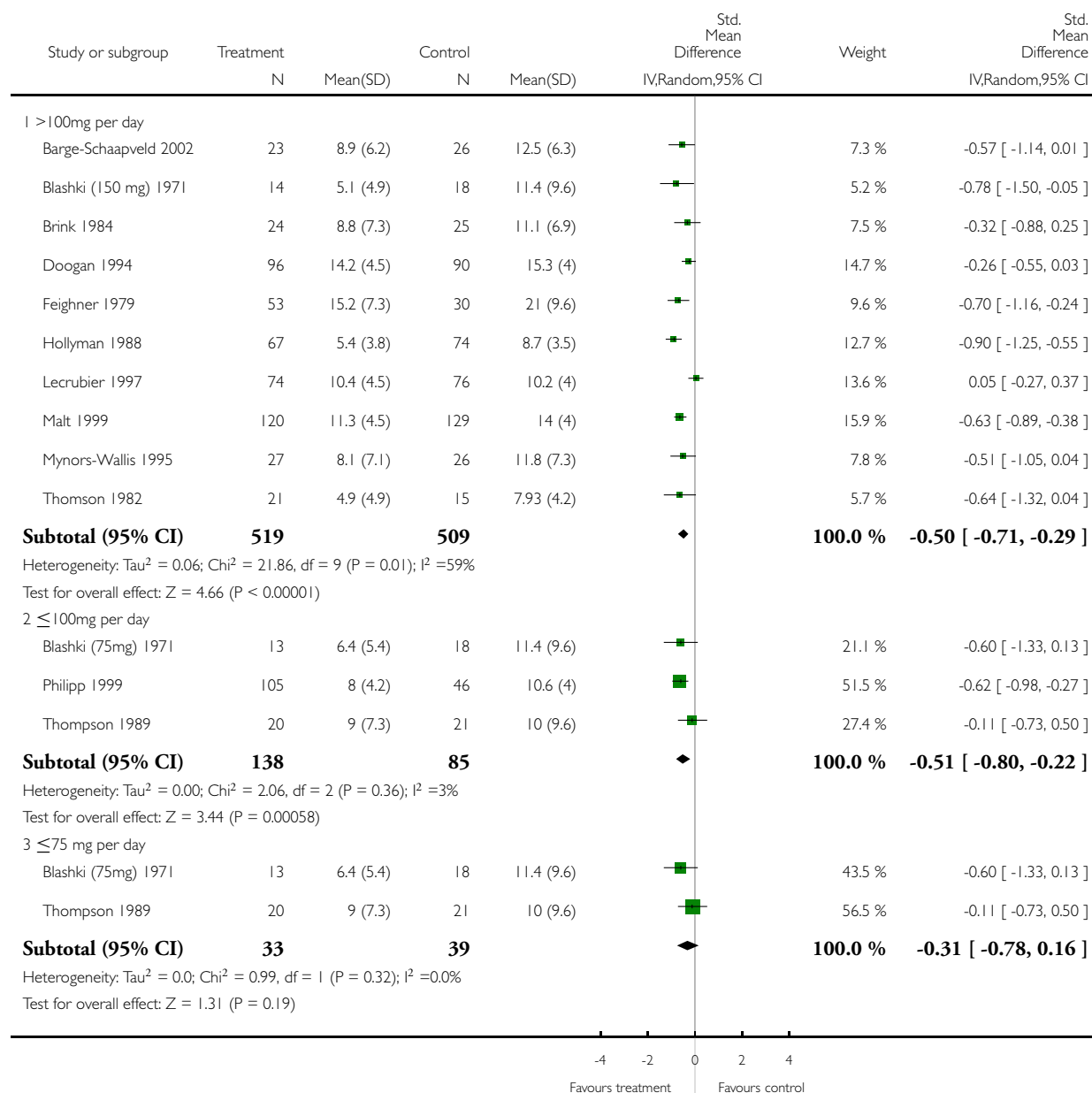


### Analysis 1.7. Comparison 1 TCAs versus placebo, Outcome 7 Depression symptoms: dosage of TCAs.

Review: Antidepressants versus placebo for depression in primary care

Comparison: 1 TCAs versus placebo

Outcome: 7 Depression symptoms: dosage of TCAs

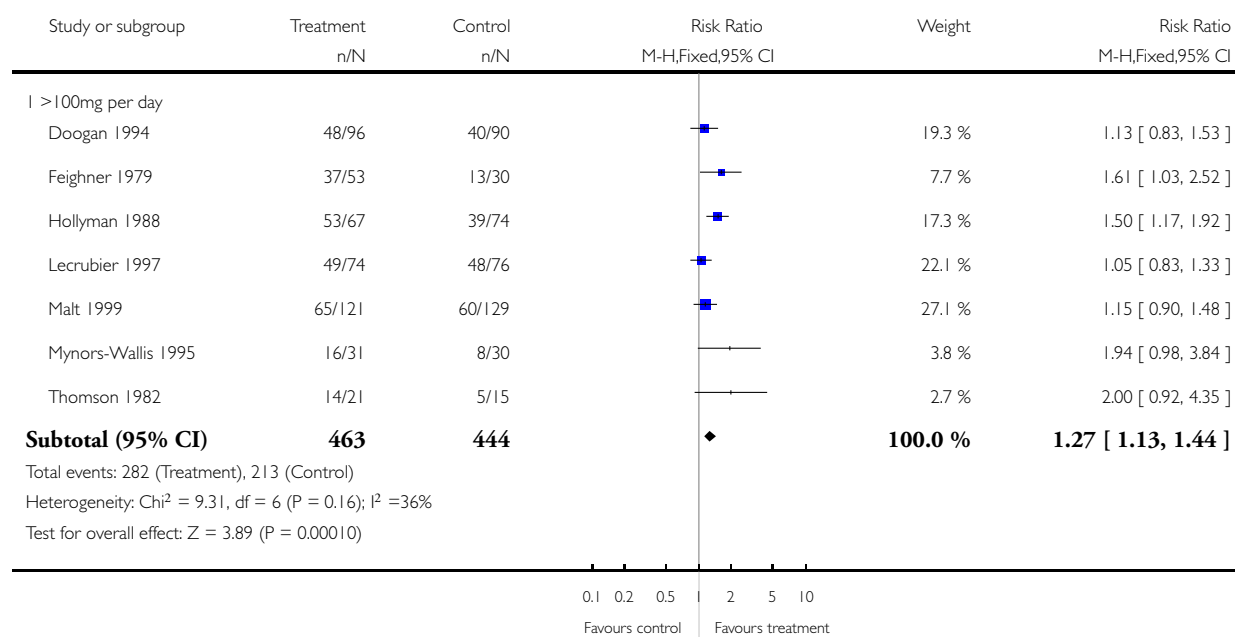


### Analysis 1.8. Comparison 1 TCAs versus placebo, Outcome 8 Clinical response: dosage of TCAs.

Review: Antidepressants versus placebo for depression in primary care

Comparison: 1 TCAs versus placebo

Outcome: 8 Clinical response: dosage of TCAs

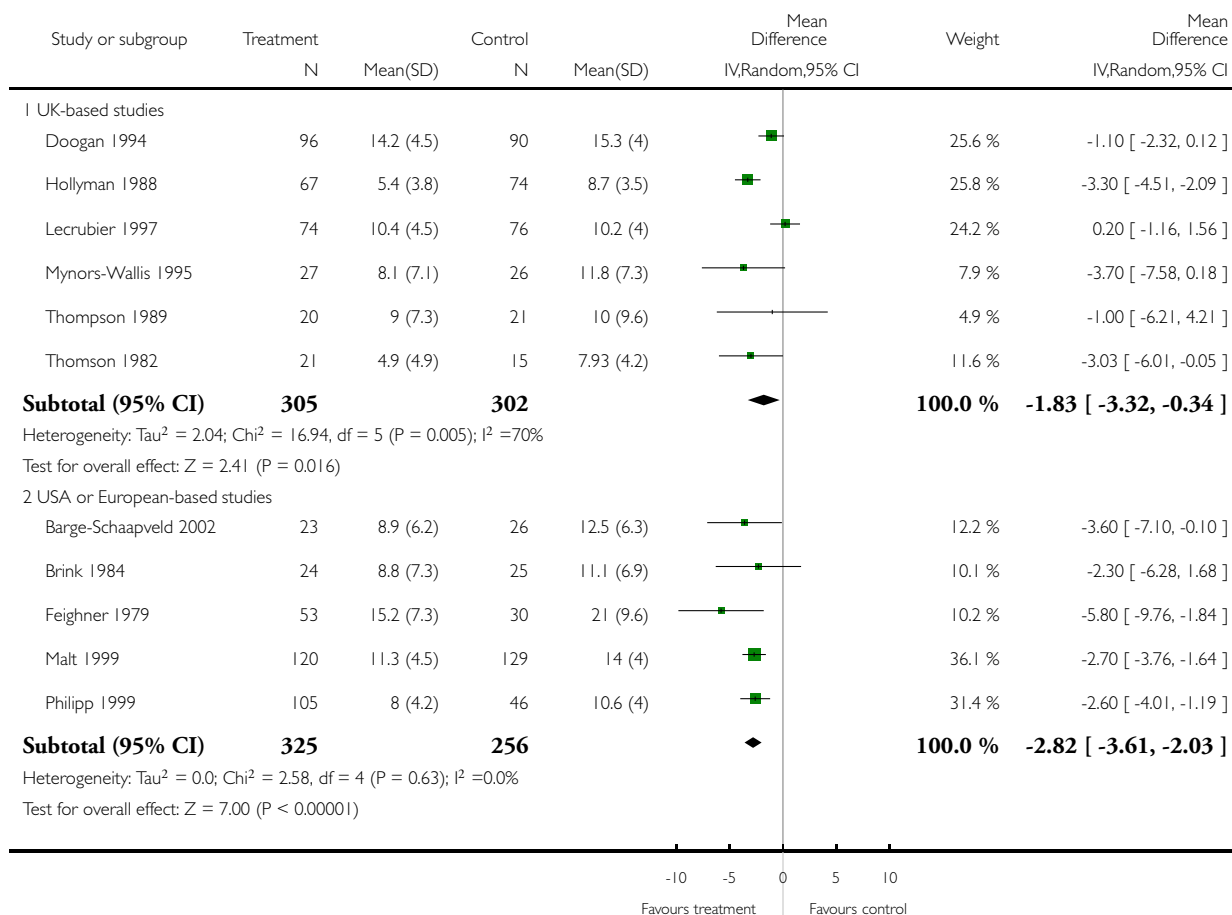


### Analysis 1.9. Comparison 1 TCAs versus placebo, Outcome 9 Depression symptoms: UK vs USA/European-based studies.

Review: Antidepressants versus placebo for depression in primary care

Comparison: 1 TCAs versus placebo

Outcome: 9 Depression symptoms: UK vs USA/European-based studies

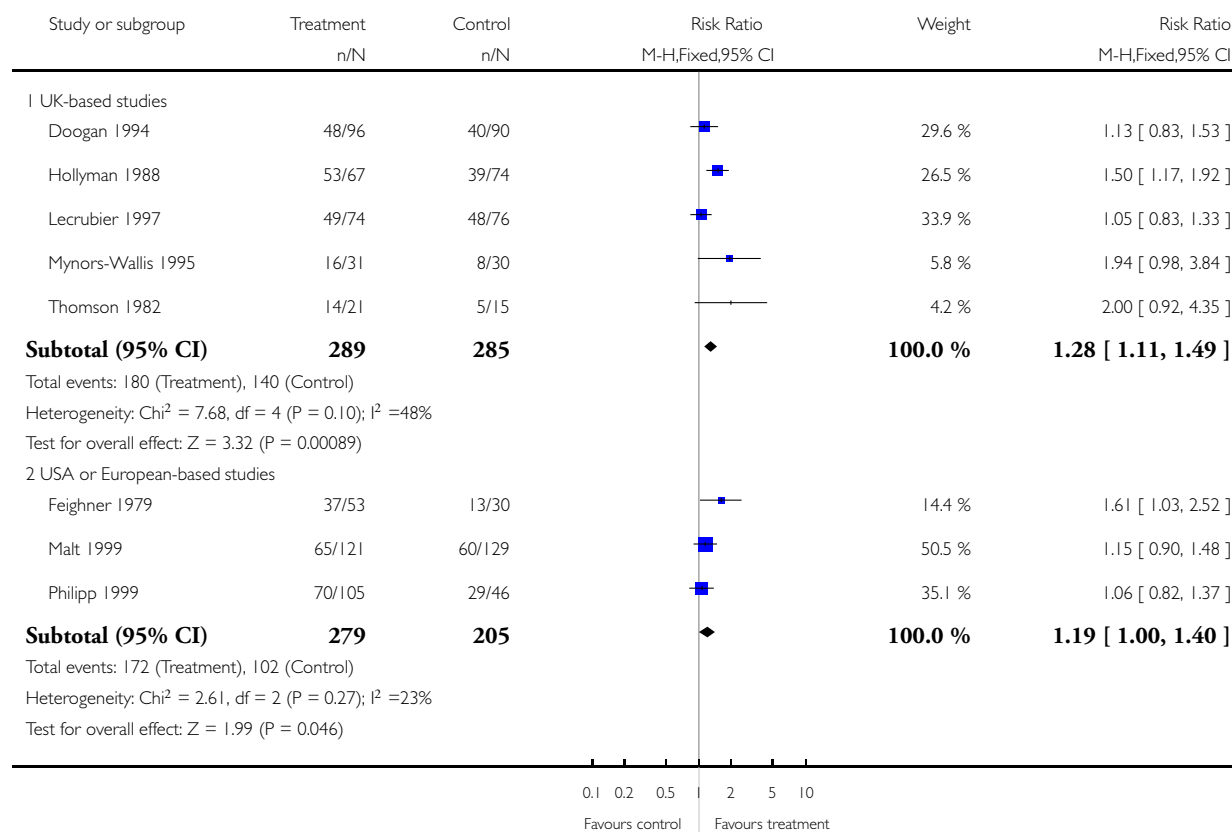


### Analysis 1.10. Comparison 1 TCAs versus placebo, Outcome 10 Clinical response: UK vs USA/European-based studies.

Review: Antidepressants versus placebo for depression in primary care

Comparison: 1 TCAs versus placebo

Outcome: 10 Clinical response: UK vs USA/European-based studies

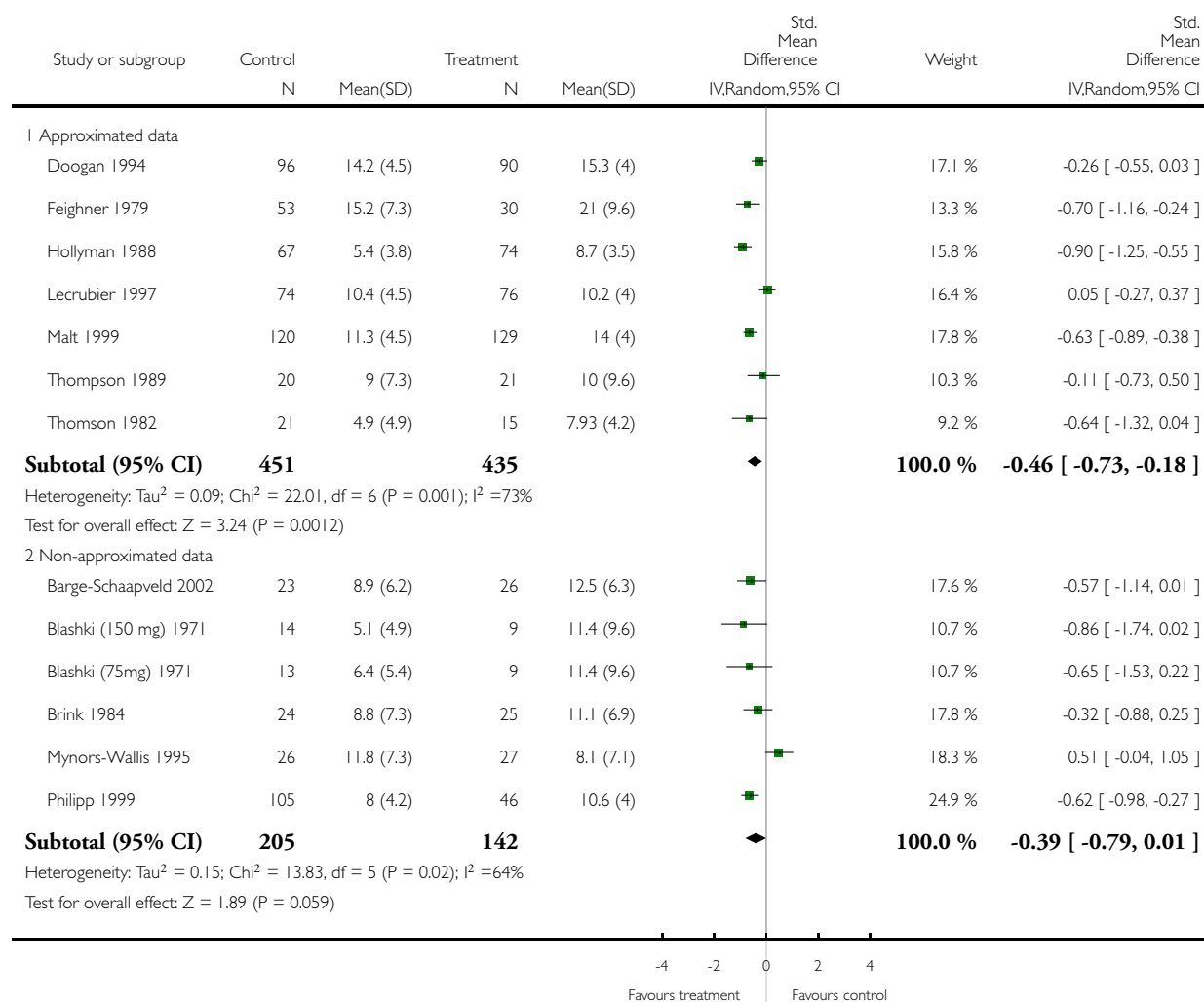


### Analysis 1.11. Comparison 1 TCAs versus placebo, Outcome 11 Depression symptoms: approximated vs non-approximated data.

Review: Antidepressants versus placebo for depression in primary care

Comparison: 1 TCAs versus placebo

Outcome: 11 Depression symptoms: approximated vs non-approximated data

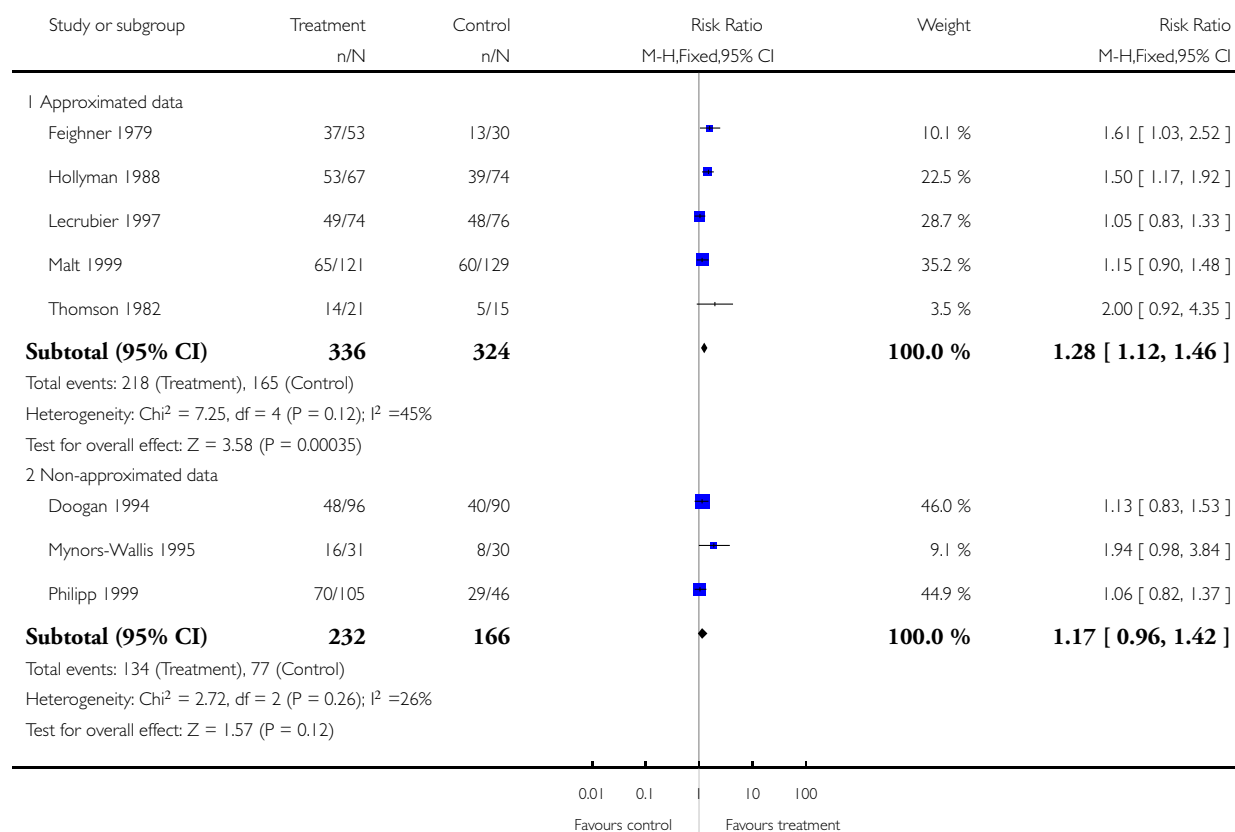


### Analysis 1.12. Comparison 1 TCAs versus placebo, Outcome 12 Clinical response: approximated vs non-approximated data.

Review: Antidepressants versus placebo for depression in primary care

Comparison: 1 TCAs versus placebo

Outcome: 12 Clinical response: approximated vs non-approximated data

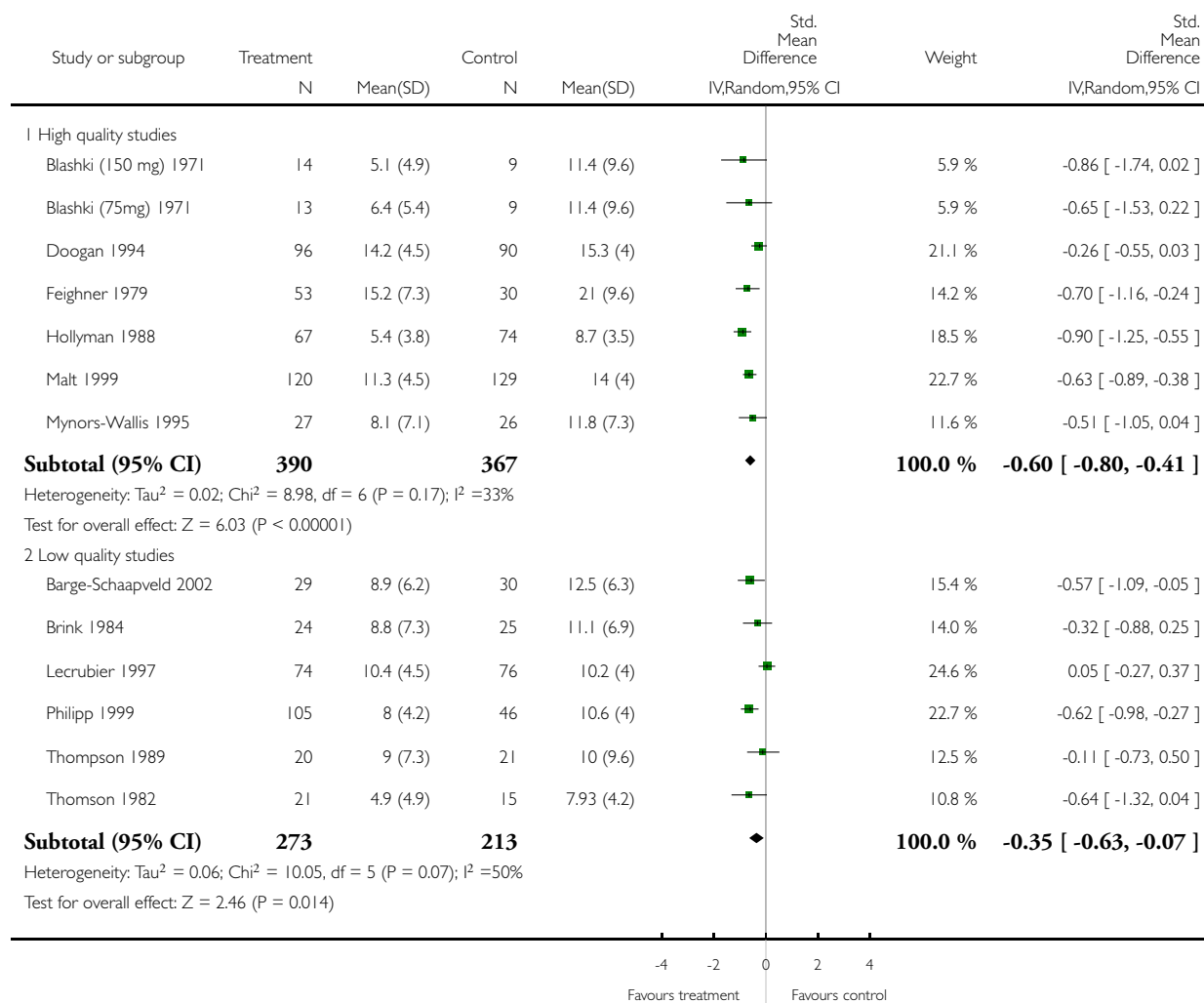


### Analysis 1.13. Comparison 1 TCAs versus placebo, Outcome 13 Depression symptoms: high vs low quality studies.

Review: Antidepressants versus placebo for depression in primary care

Comparison: 1 TCAs versus placebo

Outcome: 13 Depression symptoms: high vs low quality studies



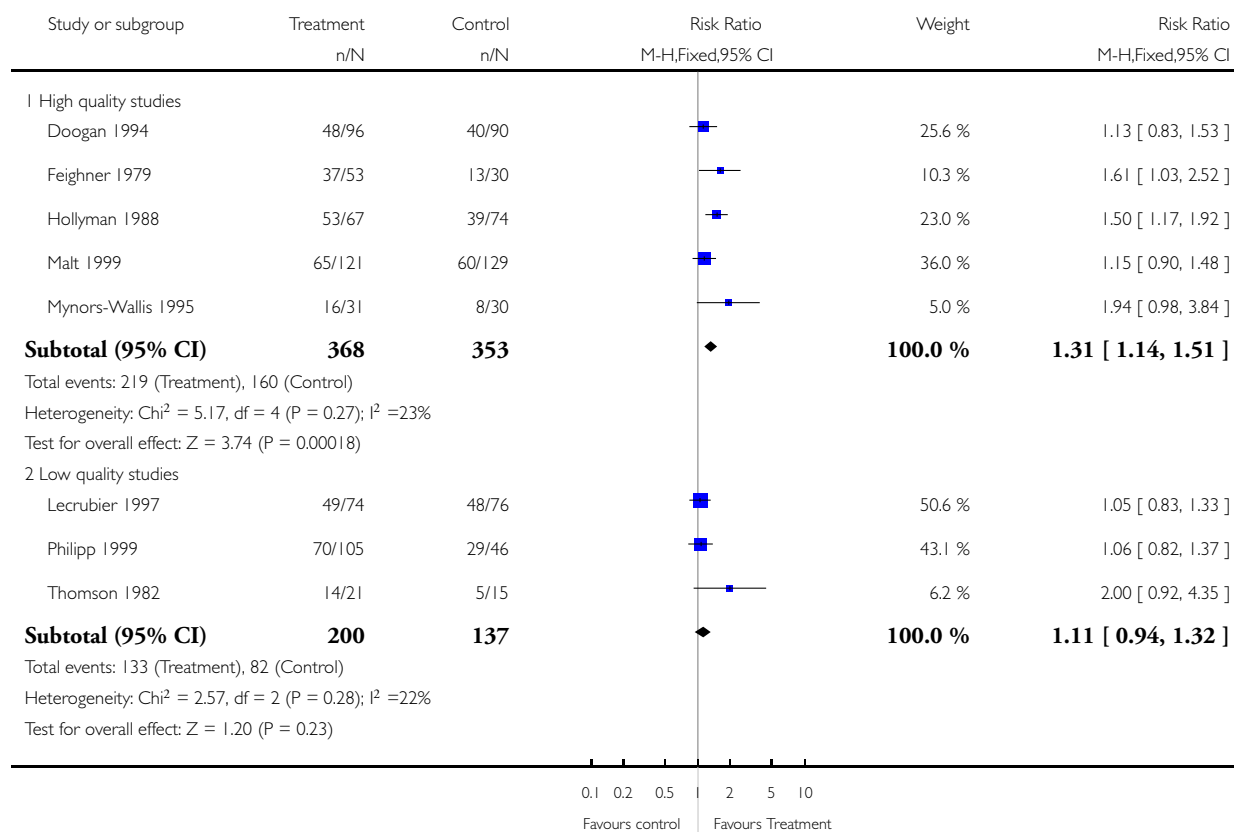


### Analysis 1.14. Comparison 1 TCAs versus placebo, Outcome 14 Clinical response: high vs low quality studies.

Review: Antidepressants versus placebo for depression in primary care

Comparison: 1 TCAs versus placebo

Outcome: 14 Clinical response: high vs low quality studies

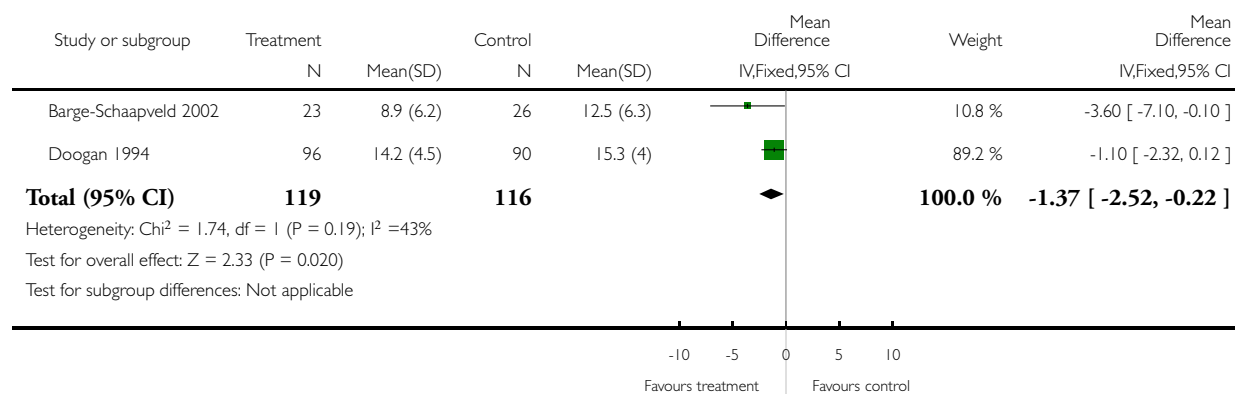


### Analysis 1.15. Comparison 1 TCAs versus placebo, Outcome 15 Depression symptoms: major depression diagnosis.

Review: Antidepressants versus placebo for depression in primary care

Comparison: 1 TCAs versus placebo

Outcome: 15 Depression symptoms: major depression diagnosis

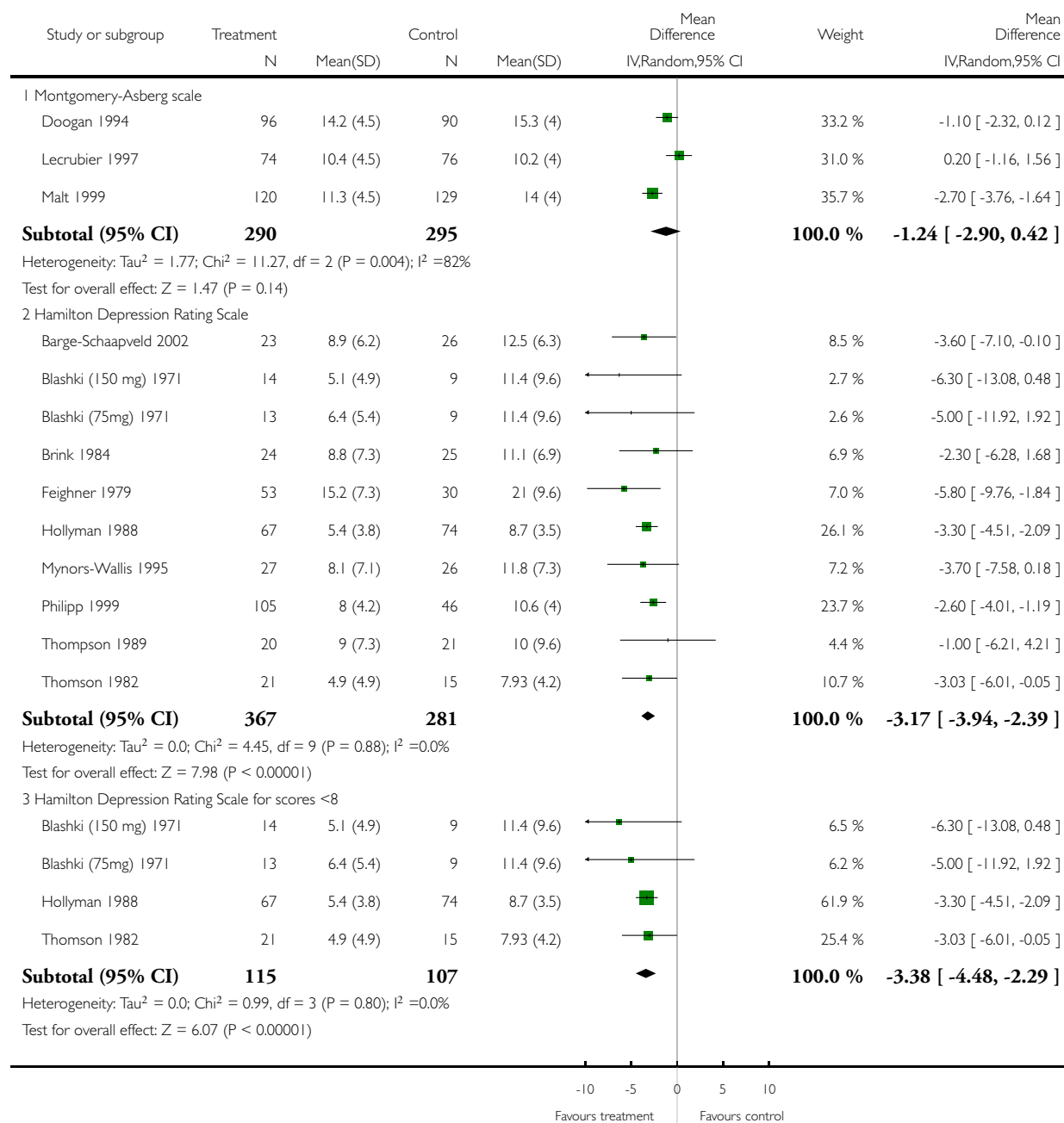


### Analysis 1.16. Comparison 1 TCAs versus placebo, Outcome 16 Depression symptoms: use of different depression scales.

Review: Antidepressants versus placebo for depression in primary care

Comparison: 1 TCAs versus placebo

Outcome: 16 Depression symptoms: use of different depression scales

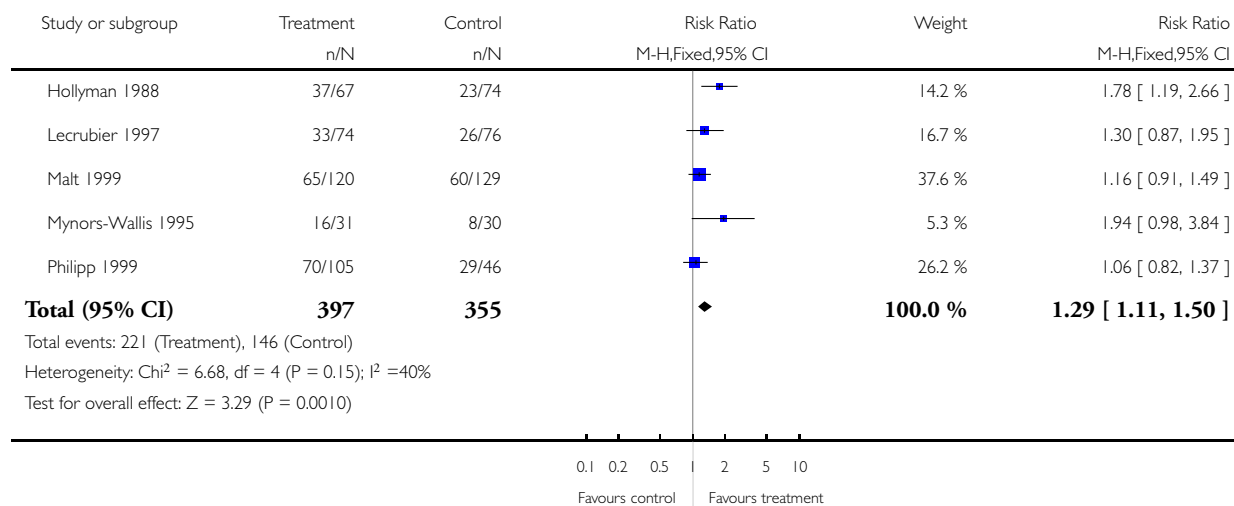


**Analysis 1.17. Comparison 1 TCAs versus placebo, Outcome 17 Clinical response: greatly improved/remission.**

Review: Antidepressants versus placebo for depression in primary care

Comparison: 1 TCAs versus placebo

Outcome: 17 Clinical response: greatly improved/remission

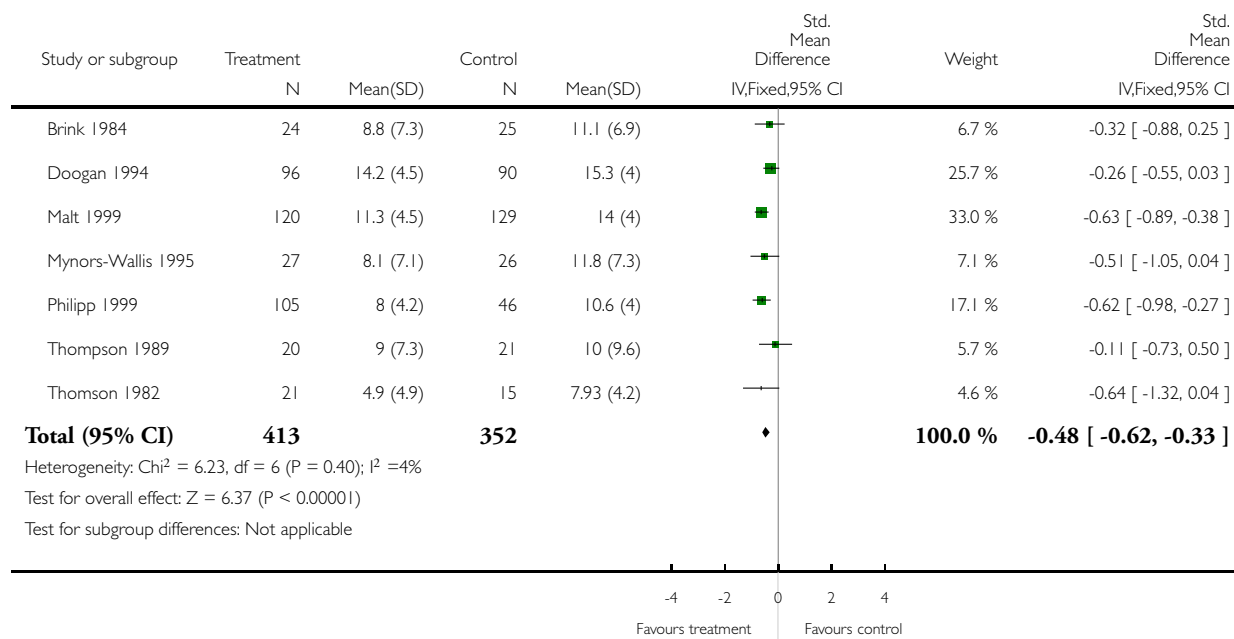


### Analysis 1.18. Comparison 1 TCAs versus placebo, Outcome 18 Depression symptoms: 50% or more GP assessors.

Review: Antidepressants versus placebo for depression in primary care

Comparison: 1 TCAs versus placebo

Outcome: 18 Depression symptoms: 50% or more GP assessors

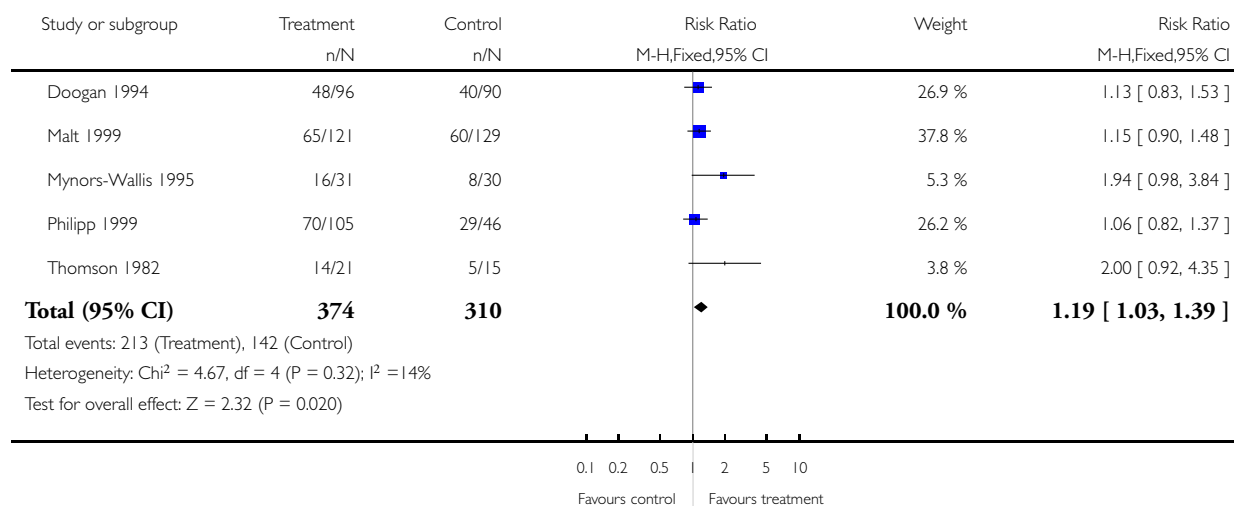


**Analysis 1.19. Comparison 1 TCAs versus placebo, Outcome 19 Clinical response: 50% or more GP assessors.**

Review: Antidepressants versus placebo for depression in primary care

Comparison: 1 TCAs versus placebo

Outcome: 19 Clinical response: 50% or more GP assessors

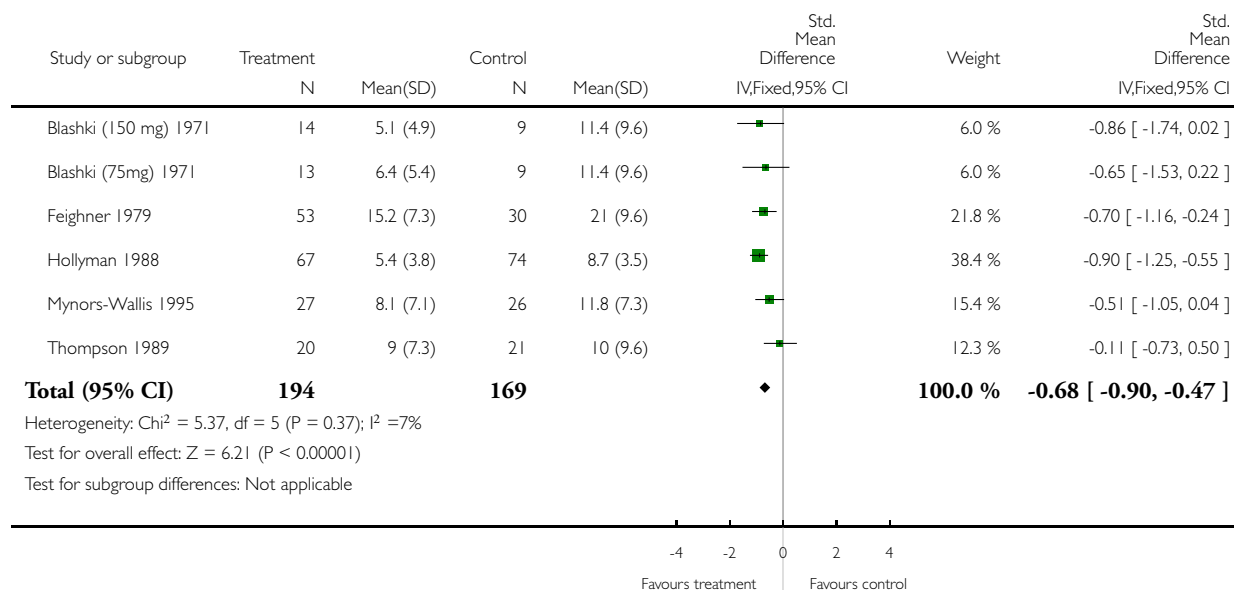


**Analysis 1.20. Comparison 1 TCAs versus placebo, Outcome 20 Depression symptoms: studies with no competing interest.**

Review: Antidepressants versus placebo for depression in primary care

Comparison: 1 TCAs versus placebo

Outcome: 20 Depression symptoms: studies with no competing interest

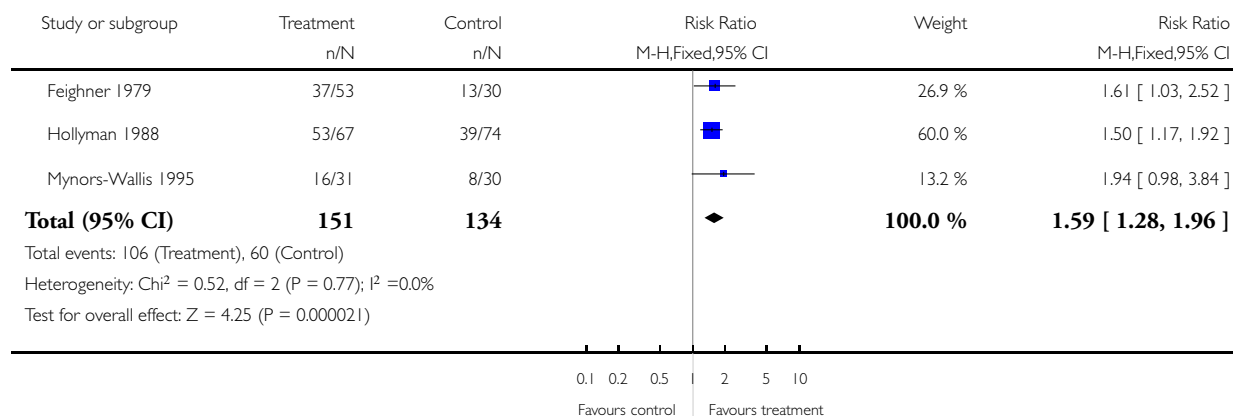


### Analysis 1.21. Comparison 1 TCAs versus placebo, Outcome 21 Clinical response: studies with no competing interest.

Review: Antidepressants versus placebo for depression in primary care

Comparison: 1 TCAs versus placebo

Outcome: 21 Clinical response: studies with no competing interest

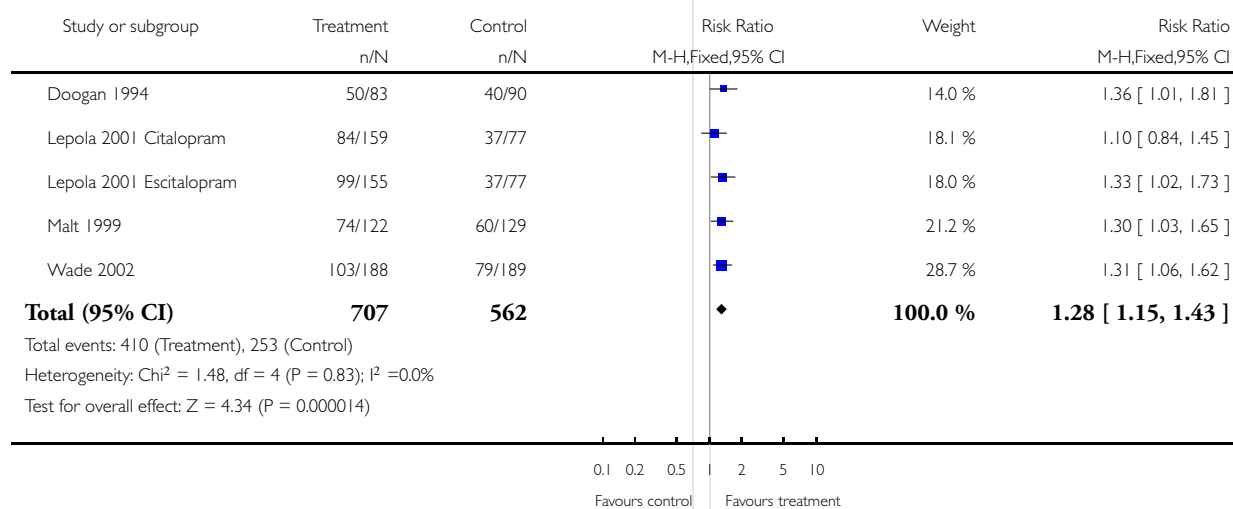


### Analysis 2.1. Comparison 2 SSRIs versus placebo, Outcome 1 Clinical response at post-treatment.

Review: Antidepressants versus placebo for depression in primary care

Comparison: 2 SSRIs versus placebo

Outcome: 1 Clinical response at post-treatment



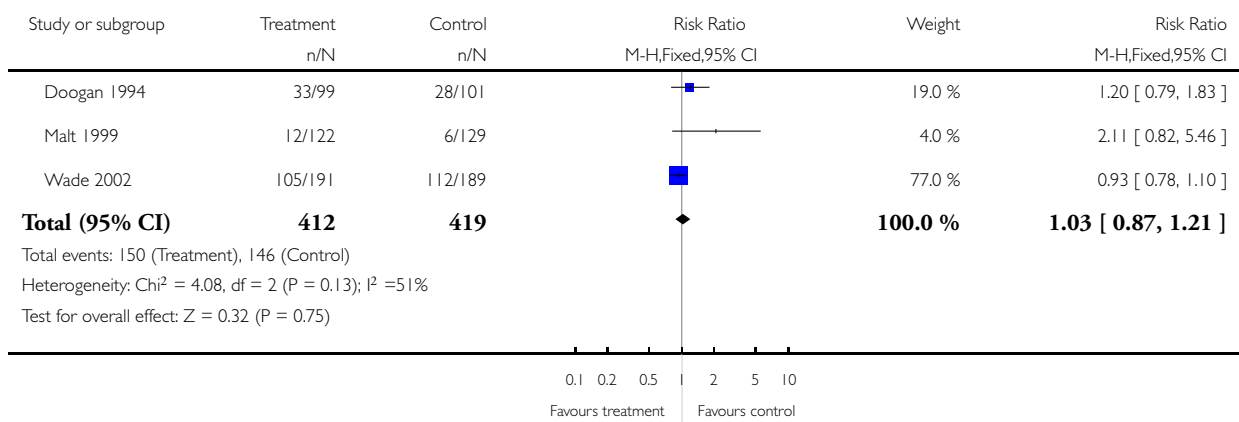


**Analysis 2.2. Comparison 2 SSRIs versus placebo, Outcome 2 Occurrence of adverse effects at post-treatment.**

Review: Antidepressants versus placebo for depression in primary care

Comparison: 2 SSRIs versus placebo

Outcome: 2 Occurrence of adverse effects at post-treatment

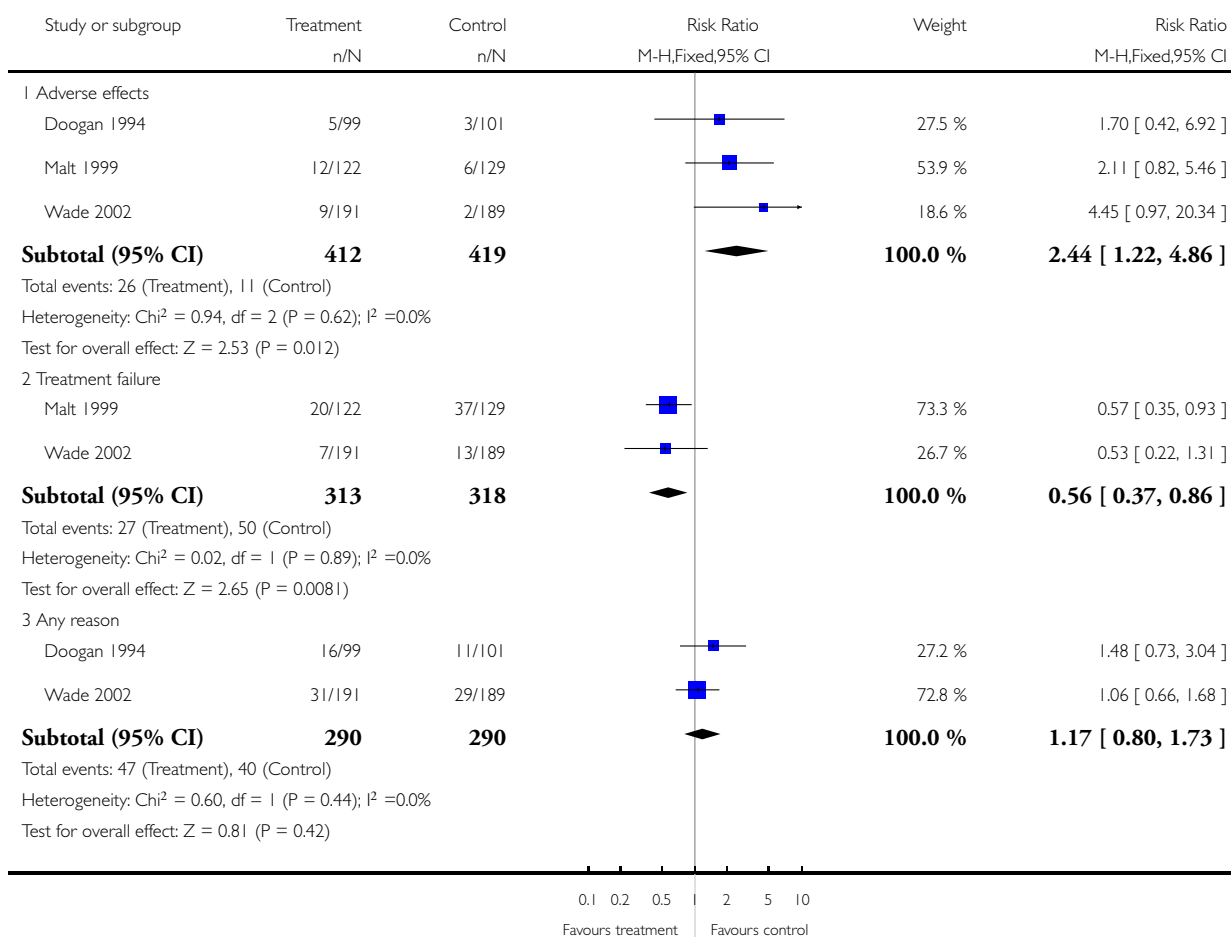


### Analysis 2.3. Comparison 2 SSRIs versus placebo, Outcome 3 Withdrawal from trials at post-treatment.

Review: Antidepressants versus placebo for depression in primary care

Comparison: 2 SSRIs versus placebo

Outcome: 3 Withdrawal from trials at post-treatment

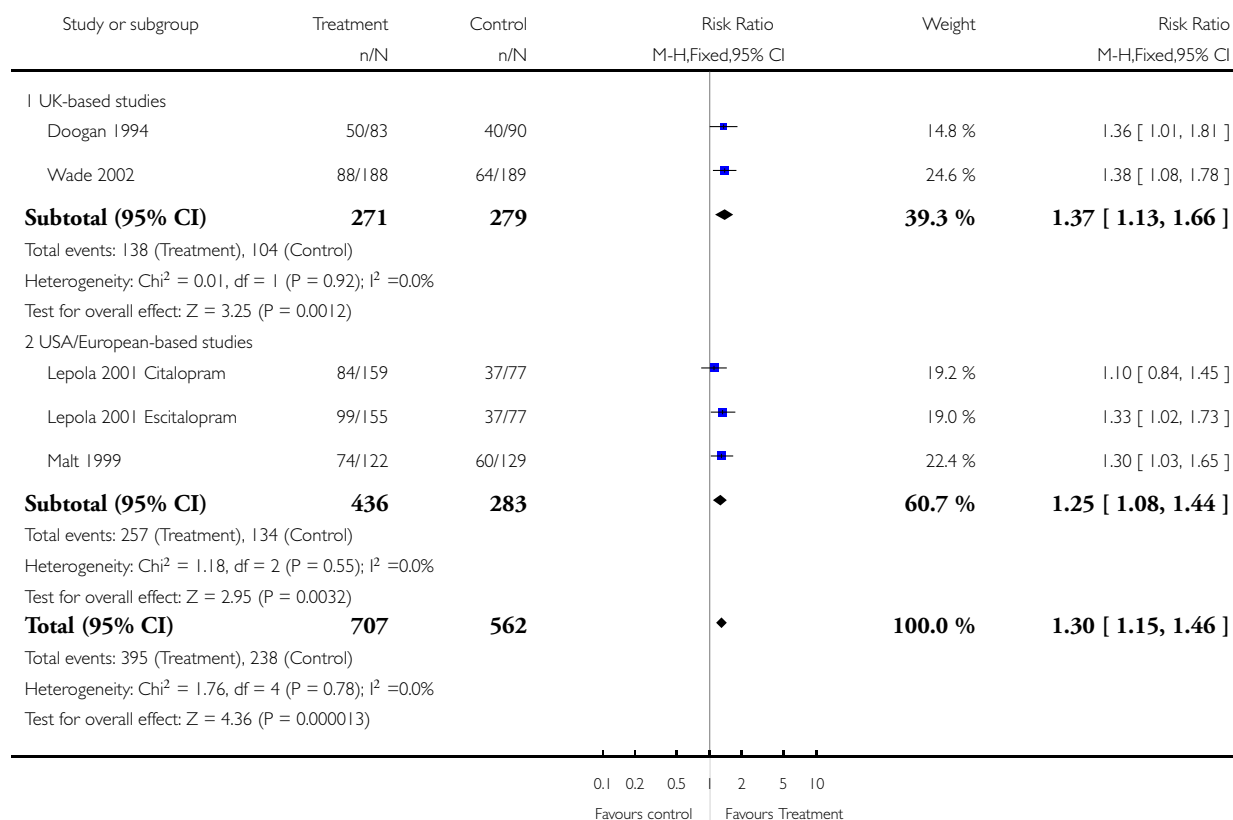


### Analysis 2.4. Comparison 2 SSRIs versus placebo, Outcome 4 Clinical response: UK vs USA/European-based studies.

Review: Antidepressants versus placebo for depression in primary care

Comparison: 2 SSRIs versus placebo

Outcome: 4 Clinical response: UK vs USA/European-based studies

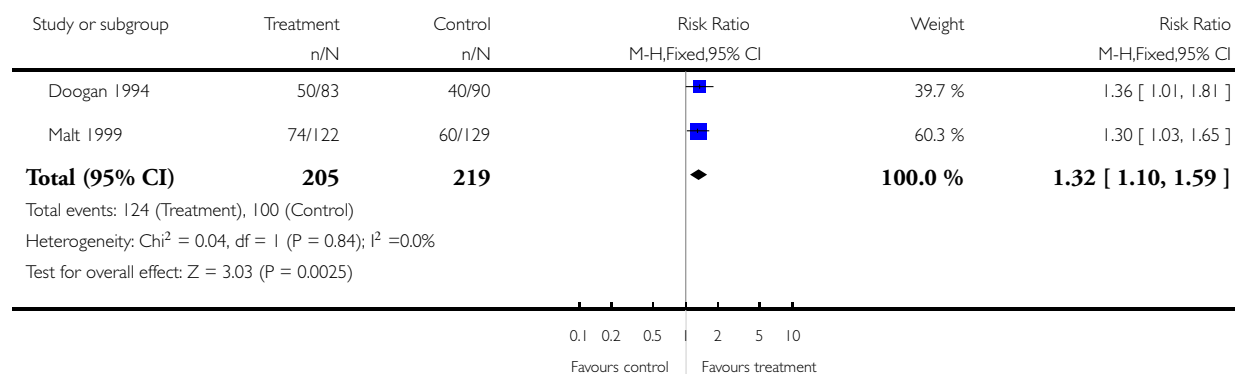


### Analysis 2.5. Comparison 2 SSRIs versus placebo, Outcome 5 Clinical response: high quality studies.

Review: Antidepressants versus placebo for depression in primary care

Comparison: 2 SSRIs versus placebo

Outcome: 5 Clinical response: high quality studies

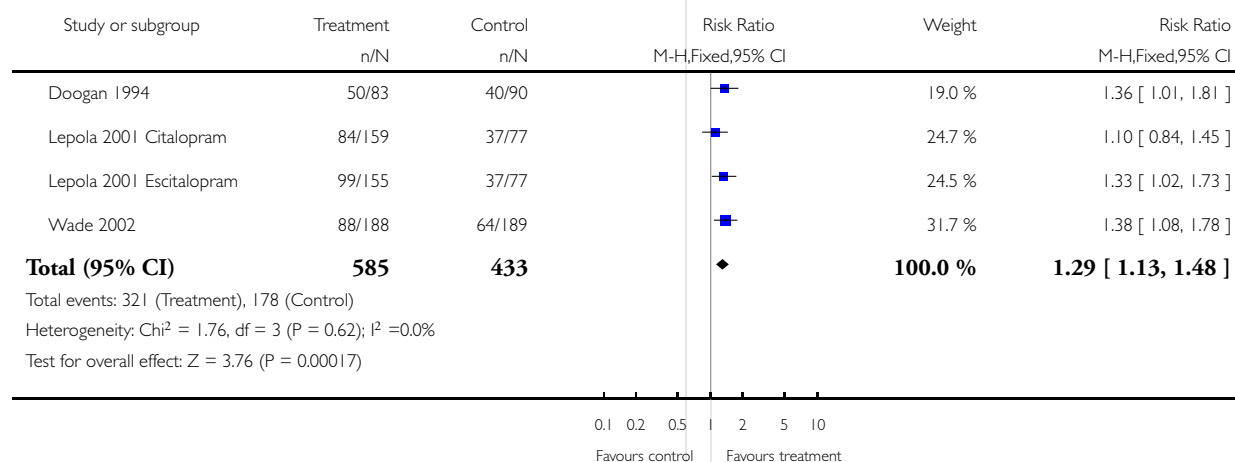


### Analysis 2.6. Comparison 2 SSRIs versus placebo, Outcome 6 Clinical response: major depression diagnosis.

Review: Antidepressants versus placebo for depression in primary care

Comparison: 2 SSRIs versus placebo

Outcome: 6 Clinical response: major depression diagnosis

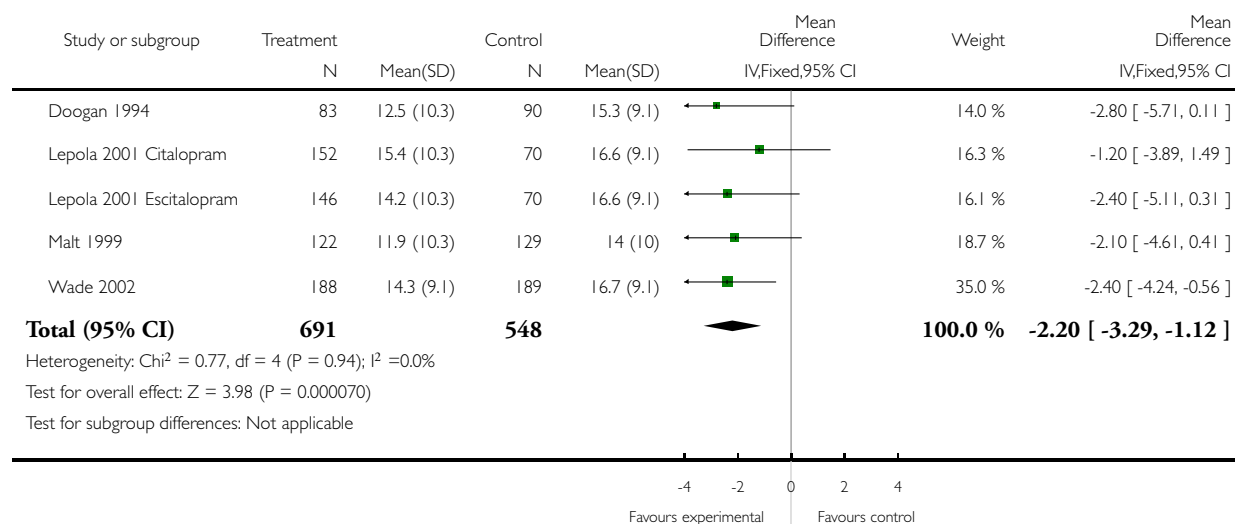


### Analysis 2.7. Comparison 2 SSRIs versus placebo, Outcome 7 Depression symptoms: use of Montgomery-Asberg scale.

Review: Antidepressants versus placebo for depression in primary care

Comparison: 2 SSRIs versus placebo

Outcome: 7 Depression symptoms: use of Montgomery-Asberg scale

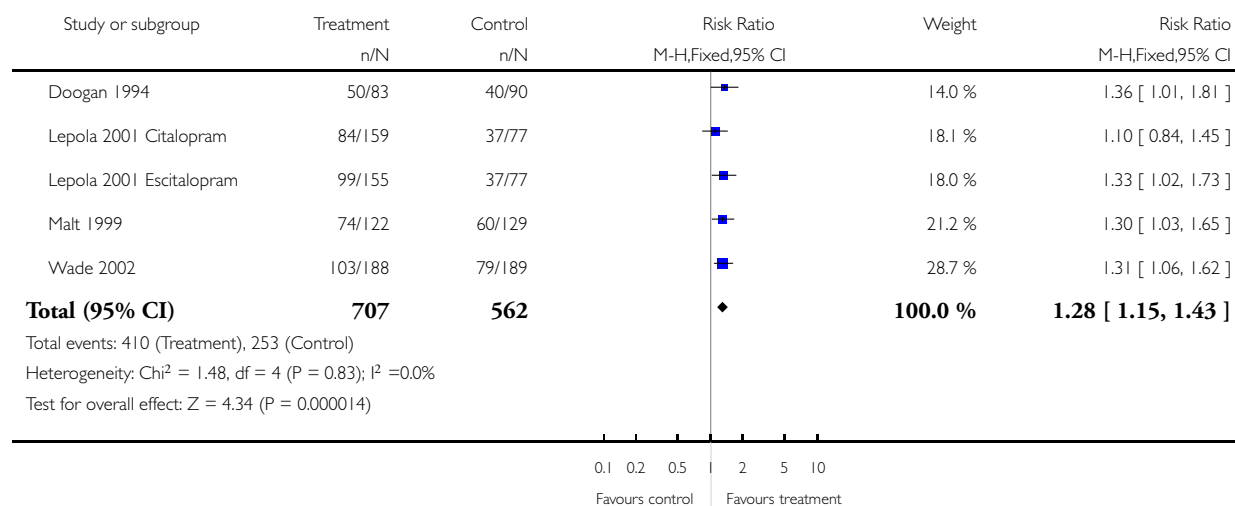


## Analysis 2.8. Comparison 2 SSRIs versus placebo, Outcome 8 Clinical response: use of Montgomery-Asberg scale.

Review: Antidepressants versus placebo for depression in primary care

Comparison: 2 SSRIs versus placebo

Outcome: 8 Clinical response: use of Montgomery-Asberg scale



## ADDITIONAL TABLES

Table 1. Quality Rating Scale items

No	Item	Components
1	Objectives and specification: Were main outcomes established a priori?	0 = Objectives unclear 1 = Objectives clear but main outcomes not specified a priori 2 = Objectives clear with a priori specification of main outcomes
2	Adequacy of sample size: Were there enough completers in each group?	0 = No/don't know 2 = Yes
3	Planned duration of trial including follow up?	0 = < 3 months 1 = > 3 months < 6 months 2 = > 6 months
4	Method of allocation	0 = Not randomised and likely to be biased 1 = Partially or quasi randomised with some bias possible 2 = Randomised allocation
5	Concealment of allocation	0 = Not done or not reported 1 = Partial concealment reported

**Table 1. Quality Rating Scale items** (Continued)

		2 = Done adequately
6	Clear description of treatment (including doses of drugs) & adjunctive treatment	0 = Main treatments not clearly described 1 = Inadequate details of main or adjunctive treatments 2 = Full details of main and adjunctive treatments
7	Blinding of subjects	0 = Not done 1 = Blinded but no test of blinding 2 = Blinded and integrity of blinding tested
8	Source of subjects described and representative sample recruited?	0 = Source of subjects not described 1 = Source of subjects but unrepresentative sample e.g. in-patients/specialist settings 2 = Source of subjects described plus representative sample
9	Use of diagnostic criteria (or clear specification of inclusion criteria)	0 = None 1 = Diagnostic criteria or clear inclusion criteria 2 = Diagnostic criteria + specification of severity
10	Record of exclusion criteria and number of exclusions and refusals reported?	0 = Criteria and number not reported 1 = Criteria or number of exclusions & refusals not reported 2 = Criteria and number of exclusions and refusals reported
11	Description of sample demographic characteristics?	0 = Little/no information (only age/sex) 1 = Basic description (e.g. marital status/ethnicity) 2 = Full description (e.g. socio-economic status/clinical history)
12	Blinding of assessor	0 = Not done 1 = Blinded but no test of blinding 2 = Blinded and integrity of blinding tested
13	Assessment of compliance with experimental treatments (including adherence to therapy)	0 = Not assessed 1 = Assessed for some experimental treatments 2 = Assessed for all experimental treatments
14	Details on side effects	0 = Inadequate details 1 = Recorded by group but details inadequate 2 = Full side effect profiles by group
15	Record of number and reasons for withdrawal by group	0 = No information on withdrawals by group 1 = Withdrawals by group reported without reason 2 = Withdrawals and reason by group
16	Outcome measures described clearly or use of validated instruments	0 = Outcomes not described clearly 1 = Some outcomes not clearly described 2 = Outcomes described or valid & reliable instruments used

**Table 1. Quality Rating Scale items** (Continued)

17	Information on comparability and adjustment for differences in analysis	0= No information on comparability 1= Some info on comparability with appropriate adjustment 2= Sufficient comparability info with appropriate adjustment
18	Inclusion of withdrawals in analysis (ITT or endpoint)	0 = Not included or not reported 1 = Withdrawals included in analysis by estimation of outcome 2 = Withdrawals followed up and included in analysis
19	Presentation of results with inclusion of data for re-analysis of main outcomes (e.g. SDs)	0 = Inadequate presentation 1= Adequate 2 = Comprehensive
20	Appropriate statistical analysis (including correction for multiple tests where applicable)	0 = Inappropriate 1 = Mainly appropriate 2 = Appropriate and comprehensive
21	Conclusions justified	0 = No 1 = Partially 2 = Yes
22	Declaration of interests (e.g. source of funding)	0 = No 2 = Yes
<p><i>Notes:</i></p> <p>1= Details on how the allocation code was protected from those involved in patient recruitment may be achieved by having allocation done by a central independent body, or protection of code (e.g. sealed opaque envelopes).</p> <p>2= Source of subjects refers to the setting in which subjects were found (e.g. inpatients, outpatients, general practice, community etc).</p> <p>3= Test of integrity of blinding is normally done by asking participants to guess their allocated group. Results can be compared to those which would be expected by chance.</p> <p>4= Whether or not the decision to initiate an antidepressant was based strictly on the primary care practitioners judgment that there was clinical depression warranting treatment rather than insisting that criteria for a specific diagnosis, such as major depressive disorder, be established</p>		

**Table 2. Methodological quality of included studies**

Author and year	Sample size adequacy	Concealment	Treatment description	Representative sample	Diagnostic criteria	Withdrawals	Outcome measures	Total
Barge-Schaapveld	2	2	2	1	2	1	2	31



**Table 2. Methodological quality of included studies** (Continued)

2002								
Blashki 1971	2	2	2	1	1	2	2	30
Brink 1984	0	0	2	2	2	2	2	26
Doogan 1994	2	2	2	2	2	1	1	30
Feighner 1979	2	2	2	1	2	2	2	27
Hollyman 1988	2	2	2	2	2	2	2	38
Lecrubier 1997	0	0	2	2	2	2	2	32
Lepola 2001	2	0	2	1	2	2	2	28
Malt 1999	2	2	2	2	2	2	2	34
Mynors- wallis 1995	2	2	2	2	2	1	2	34
Philipp 1999	2	0	2	2	2	2	2	37
Thompson 1989	0	0	2	2	2	1	2	26
Thomson 1982	0	0	2	2	1	2	2	25
Wade 2002	2	2	2	1	2	2	2	32

## APPENDICES

### Appendix 1. Search of the CCDANCTR-Studies Register

CCDANCTR-Studies - searched on 24 September 2007

Intervention = (Antidepress\* or "Monoamine Oxidase Inhibitors" or "Selective Serotonin Reuptake Inhibitors" or "Tricyclic Drugs" or Acetylcarnitine or Alaproclate or Amersergide or Amiflamine or Amineptine or Amitriptyline or Amoxapine or Befloxatone or Benactyzine or Brofaromine or Bupropion or Butriptyline or Caroxazone or Chlorpoxiten or Cilosamine or Cimoxatone or Citalopram or Clomipramine or Clorgyline or Clorimipramine or Clovoxamine or Deanol or Demexiptiline or Deprenyl or Desipramine or Dibenzipin or Diclofensine or Dothiepin or Doxepin or Duloxetine or Escitalopram or Etoperidone or Femoxetine or Fluotracen or Fluoxetine or Fluparoxan or Fluvoxamine or Idazoxan or Imipramine or Iprindol\* or Iproniazid or isocarboxazid or Litoxetin\* or Lofepramin\* or Maprotilin\* or Medifoxamin\* or Melitracen or Metapramin\* or Mianserin or Milnacipran or Minaprin\* or Mir tazapin\* or Moclobemid\* or Nefazodon\* or Nialamid\* or Nomifensin\* or Nortriptylin\* or Noxiptilin\* or Opipramol or Oxaflozan\* or Oxaprotilin\* or Pargylin\* or Paroxetin\* or Phenelzin\* or Piribedil or Pirlindol\* or Pivagabin\* or Prosulprid\* or Protriptylin\* or Quinupramin\* or Reboxetin\* or Rolipram or Sertralin\* or Setiptilin\* or Teniloxin\* or Tetrindol\* or Thiazesim or Thozalinon\* or Tianeptin\* or Toloxaton\* or Tomoxetin\* or Tranylcypropromin\* or Trazodon\* or Trimipramin\* or Venlafaxin\* or Viloxazin\* or Viqualin\* or Zimeldin\*)

And Intervention = Placebo\*

And Diagnosis = (Depress\* or Dysthymi\* or "Adjustment Disorder\*" or "Mood Disorder\*" or "Affective Disorder" or "Affective Symptoms")

And Setting = ("General Practice" or "Primary Care" or "Community Mental Health" or "Family Practice" or "Health Maintenance Organization" or HMO or Home or "University Clinic" or Private or Ambulatory) And Age Group = Adult

### Appendix 2. Search of the CCDANCTR-References Register

CCDANCTR-References - searched on 24 September 2007

Free-text = (Antidepress\* or "Monoamine Oxidase Inhibitors" or "Selective Serotonin Reuptake Inhibitors" or "Tricyclic Drugs" or Acetylcarnitine or Alaproclate or Amersergide or Amiflamine or Amineptine or Amitriptyline or Amoxapine or Befloxatone or Benactyzine or Brofaromine or Bupropion or Butriptyline or Caroxazone or Chlorpoxiten or Cilosamine or Cimoxatone or Citalopram or Clomipramine or Clorgyline or Clorimipramine or Clovoxamine or Deanol or Demexiptiline or Deprenyl or Desipramine or Dibenzipin or Diclofensine or Dothiepin or Doxepin or Duloxetine or Escitalopram or Etoperidone or Femoxetine or Fluotracen or Fluoxetine or Fluparoxan or Fluvoxamine or Idazoxan or Imipramine or Iprindol\* or Iproniazid or isocarboxazid or Litoxetin\* or Lofepramin\* or Maprotilin\* or Medifoxamin\* or Melitracen or Metapramin\* or Mianserin or Milnacipran or Minaprin\* or Mir tazapin\* or Moclobemid\* or Nefazodon\* or Nialamid\* or Nomifensin\* or Nortriptylin\* or Noxiptilin\* or Opipramol or Oxaflozan\* or Oxaprotilin\* or Pargylin\* or Paroxetin\* or Phenelzin\* or Piribedil or Pirlindol\* or Pivagabin\* or Prosulprid\* or Protriptylin\* or Quinupramin\* or Reboxetin\* or Rolipram or Sertralin\* or Setiptilin\* or Teniloxin\* or Tetrindol\* or Thiazesim or Thozalinon\* or Tianeptin\* or Toloxaton\* or Tomoxetin\* or Tranylcypropromin\* or Trazodon\* or Trimipramin\* or Venlafaxin\* or Viloxazin\* or Viqualin\* or Zimeldin\*) And Free-text= Placebo\* And Keyword = (Depress\* or Dysthymi\* or "Adjustment Disorder\*" or "Mood Disorder\*" or "Affective Disorder" or "Affective Symptoms") And Free-text = ("General Practice" or "Primary Care" or "Community Mental Health" or "Family Practice" or "Health Maintenance Organization" or HMO or Home or "University Clinic" or Private or Ambulatory)

## HISTORY

Review first published: Issue 3, 2009

Date	Event	Description
9 September 2008	Amended	Converted to new review format.
24 September 2007	New citation required and conclusions have changed	Substantive amendment

## CONTRIBUTIONS OF AUTHORS

S Macgillivray and B Arroll undertook the original abstract selection, data extraction and quality assessments. T Kenealy and G Blashki undertook a second pass on the abstract selection. CR Elley did a repeat data extraction. All other authors read many versions of the review checking on data extraction, grammar, spelling and readability.

## DECLARATIONS OF INTEREST

BA is a member of the Primary Care group of the Future Forum and Educational Foundation funded by AstraZeneca (UK). BA is also a member of the Pharmac seminar series board. Pharmac is the New Zealand government funding agency for pharmaceuticals. BA has also been funded to a conference by Sanofi-Aventis.

## SOURCES OF SUPPORT

### Internal sources

- No sources of support supplied

### External sources

- Office of Scottish Scientist, UK.

## INDEX TERMS

### Medical Subject Headings (MeSH)

\*Primary Health Care; Antidepressive Agents [\*therapeutic use]; Antidepressive Agents, Tricyclic [\*therapeutic use]; Depression [\*drug therapy]; Randomized Controlled Trials as Topic; Serotonin Uptake Inhibitors [\*therapeutic use]

**MeSH check words**

Adult; Humans; Middle Aged; Young Adult