



# Atmospheric processing of iron in mineral and combustion aerosols: development of an intermediate-complexity mechanism suitable for Earth system models

Rachel A. Scanza<sup>1,2</sup>, Douglas S. Hamilton<sup>1</sup>, Carlos Perez Garcia-Pando<sup>3</sup>, Clifton Buck<sup>4</sup>, Alex Baker<sup>5</sup>, and Natalie M. Mahowald<sup>1</sup>

<sup>1</sup>Department of Earth and Atmospheric Sciences, Cornell University, Ithaca, New York, USA

<sup>2</sup>Atmospheric Sciences and Global Change Division, Pacific Northwest National Laboratory, Richland, Washington, USA

<sup>3</sup>Earth Sciences Department, Barcelona Supercomputing Center, Barcelona, Spain

<sup>4</sup>Department of Marine Sciences, University of Georgia, Athens, Georgia, USA

<sup>5</sup>School of Environmental Sciences, University of East Anglia, Norwich, UK

**Correspondence:** Rachel A. Scanza (rachel.scanza@pnnl.gov)

Received: 25 January 2018 – Discussion started: 19 February 2018

Revised: 30 June 2018 – Accepted: 28 August 2018 – Published: 5 October 2018

**Abstract.** Atmospheric processing of iron in dust and combustion aerosols is simulated using an intermediate-complexity soluble iron mechanism designed for Earth system models. The solubilization mechanism includes both a dependence on aerosol water pH and in-cloud oxalic acid. The simulations of size-resolved total, soluble and fractional iron solubility indicate that this mechanism captures many but not all of the features seen from cruise observations of labile iron. The primary objective was to determine the extent to which our solubility scheme could adequately match observations of fractional iron solubility. We define a semi-quantitative metric as the model mean at points with observations divided by the observational mean (MMO). The model is in reasonable agreement with observations of fractional iron solubility with an MMO of 0.86. Several sensitivity studies are performed to ascertain the degree of complexity needed to match observations; including the oxalic acid enhancement is necessary, while different parameterizations for calculating model oxalate concentrations are less important. The percent change in soluble iron deposition between the reference case (REF) and the simulation with acidic processing alone is 63.8 %, which is consistent with previous studies. Upon deposition to global oceans, global mean combustion iron solubility to total fractional iron solubility is 8.2 %; however, the contribution of fractional iron solubility from combustion sources to ocean basins below 15° S is approximately 50 %. We conclude that, in many remote ocean

regions, sources of iron from combustion and dust aerosols are equally important. Our estimates of changes in deposition of soluble iron to the ocean since preindustrial climate conditions suggest roughly a doubling due to a combination of higher dust and combustion iron emissions along with more efficient atmospheric processing.

## 1 Introduction

Nearly all ocean productivity relies on enzymatic iron for photosynthesis, respiration and nitrogen fixation. The iron biogeochemical cycle is therefore an important modulator of the oceans' ability to uptake atmospheric CO<sub>2</sub>. Since approximately 30 % of atmospheric CO<sub>2</sub> emissions are absorbed by the oceans (Seiler and Crutzen, 1980; Broecker et al., 1979; Siegenthaler and Sarmiento, 1993), changes to the iron cycle may induce a potentially large negative feedback on the climate system (Martin and Fitzwater, 1988; Martin, 1990; De Baar et al., 1995; Jickells and Spokes, 2001; Jickells et al., 2005).

Many remote ocean regions are characterized by high-nutrient low-chlorophyll (HNLC) conditions; in the equatorial Pacific and Southern Ocean basins, ocean primary productivity (OPP) is iron limited (Martin and Fitzwater, 1988; Boyd et al., 2000). A significant source of new iron (in con-

trast to recirculated iron from upwelling, estuary runoff or fluxes from continental margins) to these regions is atmospheric deposition of desert dust (Jickells et al., 2005; Fung et al., 2000); however, iron in dust is typically insoluble and not considered to be bioavailable for OPP (Mahowald et al., 2005; Johnson, 2001; Jickells and Spokes, 2001). Although combustion iron is a much smaller source of new iron, it is considerably more soluble than dust iron (Guieu et al., 2005; Chuang et al., 2005), potentially contributing up to 50 % of bioavailable iron in remote HNLC regions (Luo et al., 2008; Mahowald et al., 2009; Winton et al., 2015; Ito, 2015). Many definitions exist for bioavailable iron although how organisms utilize iron is not well understood (Jickells et al., 2005). Bioavailable iron is typically considered to be dissolved iron in the ferrous (Fe(II)) oxidation state; however, ocean organisms have been observed to utilize iron in different forms (Barbeau et al., 1996). In this study, bioavailable iron is defined as labile iron, or dissolved iron in either the ferrous or ferric oxidation states.

Acidic processing of mineral dust and combustion aerosols during atmospheric transport is one potential mechanism for iron dissolution upon deposition, and many studies have observed increased iron liberation from insoluble iron oxides with decreasing pH (Duce and Tindale, 1991; Zhu et al., 1997; Zhuang et al., 1992; Jickells and Spokes, 2001; Desboeufs et al., 2001; Meskhidze et al., 2003). However, acidic processing is likely to work in conjunction with other physical and chemical processes such as photochemical reduction and organic ligand processing. Iron solubility has also been correlated with particle size with increasing fractional iron solubility as mineral dust concentrations decrease (Baker and Croot, 2010; Chen and Siefert, 2004; Baker and Jickells, 2006). This relates to the preferential settling of larger particles during transport along with a higher surface-area-to-volume ratio for smaller particles. Because smaller particles are associated with longer transport times, their probability of undergoing multiple cycles of evaporation and condensation in the atmosphere is increased. Oxalate, the oxidation product of oxalic acid, can act as an organic ligand; this has been observed to enhance iron dissolution when complexation with aerosols occurs in aqueous solutions under moderately acidic conditions (e.g., within clouds) (Cornell and Schindler, 1987; Xu and Gao, 2008; Solmon et al., 2009; Paris et al., 2011). The formation of oxalate in the atmosphere is complicated (Myriokefalitakis et al., 2011) but may increase soluble iron concentrations over 75 % in addition to acidic processing alone (Johnson and Meskhidze, 2013; Myriokefalitakis et al., 2015; Ito, 2015). Previous studies focused on observations have shown a very strong inverse relationship between total iron and solubility (Sholkovitz et al., 2012), where differences in methods of measuring soluble iron appear to be much less important than previously thought (Baker et al., 2014). Observations from Sholkovitz et al. (2012) show a trend of increasing iron solubility with decreasing total iron concentration

and conclude that much of this is due to the smaller particle size distribution of combustion aerosols and their ability to enhance dust iron dissolution. Mahowald et al. (2018) show using a simple 1-D plume model that either differential solubility in emissions of combustion aerosols or atmospheric processing of dust iron can match the observed relationship described above. At emission, combustion aerosols are typically smaller and thus remain suspended in the atmosphere longer than the larger dust aerosols. In addition, since combustion aerosols appear to have higher Fe solubility, the plume will increase in solubility as it is transported downwind from continental sources. Alternatively, if only dust aerosols are considered to be sources of iron, but are atmospherically processed downwind from source regions, one will see lower values of iron in the aerosols, as particles fall out, yet the remaining iron will be more soluble (longer atmospheric processing). Quantitative comparison of this simple plume model indicates that either of these two cases can match observations (Box 2, Mahowald et al., 2018). Panel (b) in Box 2 (Mahowald et al., 2018) is reproduced here (Fig. S5 in the Supplement) on a linear scale to facilitate a comparison to Fig. 3 in Sholkovitz et al. (2012). While the combustion case (blue) is the only case able to replicate very high aerosol Fe solubility (> 30 %), all three cases match the observed trend of increasing fractional iron solubility with decreasing total aerosol iron concentrations.

The type of iron in dust is dependent on mineralogy and surface area. For example, iron associated with hematite and goethite is tightly bound as iron (hydr)oxides and its dissolution even under very acidic conditions is slow. Nanoparticles of hematite and ferrihydrite have been observed to coat clay minerals illite and smectite (Shi et al., 2012; Ito and Xu, 2014); the surface-area-to-volume ratio in nanoparticles (< 0.1  $\mu\text{m}$ ) is sufficiently high to facilitate rapid dissolution of Fe at low pH. The clay minerals illite, smectite, feldspar and kaolinite also include Fe as substitutions within aluminosilicate mineral lattices and may be appreciable sources of soluble Fe (Journet et al., 2008). Different levels of model complexity have been employed to simulate atmospheric iron processing from very simple models including a first-order rate constant applied to a constant 3.5 % iron in dust (Hand et al., 2004; Luo et al., 2008) to more complex schemes allowing different types of acidic species to interact with mineral dust and combustion aerosols during transport and applying mineral-specific dissolution rates (Meskhidze et al., 2005; Johnson and Meskhidze, 2013; Ito and Xu, 2014; Myriokefalitakis et al., 2015; Ito, 2015). A more recent study developed an iron dissolution scheme with fewer mineral tracers to allow for simulations using Earth system models (Ito and Shi, 2016).

In this study, our goal is to develop an iron dissolution scheme of intermediate complexity that can be used in Earth system models. Recent work has emphasized the importance of variable dissolution rates based on pH and chemical composition (Meskhidze et al., 2005; Johnson and Meskhidze,

2013; Ito and Xu, 2014; Myriokefalitakis et al., 2015; Ito, 2015) and this requires the advection of multiple chemical species and calculations of chemical equilibrium. We include these complex mechanisms but use simplified parameterizations based on standard aerosol species available in most Earth system models. The type and amount of iron at emission is determined from mineral maps and brittle fragmentation theory (Claquin et al., 1999; Scanza et al., 2015; Kok, 2011). We simulate four types of iron, three for mineral dust aerosols (readily released Fe, moderately soluble Fe, weakly soluble Fe) and one for combustion aerosols (combustion Fe) (Ito and Xu, 2014; Ito, 2015). An acid-processing scheme is employed based on atmospheric concentrations of sulfate along with an in-cloud oxalate mechanism derived from laboratory data from Paris et al. (2011) (Johnson and Meskhidze, 2013; Myriokefalitakis et al., 2015; Ito, 2015). Our method performs as well as more computationally intensive methods in matching available observations of soluble iron. Additionally, the parameterizations and simplifications incorporated in our scheme render it computationally efficient, allowing for multi-decadal to centennial simulations.

The study is organized as follows: Sect. 2 describes the climate and dust model we use along with the details of our iron-processing scheme. Section 3 compares the results of the model simulations to available observations of soluble iron using a set of metrics established to evaluate model accuracy. Additionally, results from six sensitivity studies are discussed in order to quantify which model parameterizations are required to best match observations. Section 4 presents the results from four preindustrial simulations. Section 5 includes a discussion and comparison to previous modeling studies. The final section describes where future work should be directed.

## 2 Methods

The Community Earth System Model (CESM) coordinated by the National Center for Atmospheric Research (NCAR) is a global Earth system model used for past, present and future climate simulations. In this study we use the CESM version 1.0.5 with a bulk aerosol model, the Community Atmosphere Model version 4 (CAM4) (Neale et al., 2013). Previous versions of the model have been modified to allow for improved treatment of dust and mineral speciation (Albani et al., 2014; Scanza et al., 2015; Zhang et al., 2015), and here we further modify CAM4 in order to simulate the emission, transport and processing, and deposition of total and soluble iron in desert dust and combustion aerosols.

### 2.1 Desert dust model

CAM4 is used to simulate the emission, transport and deposition of bulk aerosols in the CESM. Major aerosol species include dust, sea salt, black carbon, organic carbon (OC) and

sulfate, and they are prescribed as external mixtures. Simulations are performed at a horizontal resolution of  $1.9^\circ \times 2.5^\circ$  with 56 vertical levels that span the pressure at the surface to around 2 hPa (Computational and Information Systems Laboratory, 2012; Yellowstone: IBM iDataPlex System, Climate Simulation Laboratory; Boulder, CO: National Center for Atmospheric Research, <http://n2t.net/ark:/85065/d7wd3xhc>, last access: 28 September 2018). Meteorology is driven by NASA's Goddard Earth Observation System (GEOS-5) (Suarez et al., 2008; Hurrell et al., 2013; Lamarque et al., 2012). The model is run from 2005 through 2011 assuming present-day climate conditions; we use the last five years (2007–2011) for analysis.

The desert dust model in CAM4 is a modified version of the Dust Entrainment and Deposition model (DEAD) (Zender et al., 2003) and is exactly as described and used in Albani et al. (2014) and Scanza et al. (2015). Briefly, the emission of dust is computed with an analytic trimodal lognormal probability density function from three source modes to four transport bins (Zender et al., 2003). The three source modes are defined by observed mass median diameter and geometric standard deviation (d'Almeida, 1987; Schulz et al., 1998; Zender et al., 2003). Bin widths are prescribed at 0.1–1.0, 1.0–2.5, 2.5–5.0 and 5.0–10.0  $\mu\text{m}$  (Mahowald et al., 2006; Zender et al., 2003) and have fixed lognormal sub-bin distributions (mass median diameter = 3.5  $\mu\text{m}$ ,  $\sigma_g = 2.0$ ) (Zender et al., 2003). The size distribution across dust bins was modified from the release version of the model to follow the brittle fragmentation theory of vertical dust flux (Kok, 2011) with particle mass fractions of 0.011, 0.087, 0.272 and 0.625 in bins 1–4, respectively (Albani et al., 2014). Dry removal of dust aerosols involves parameterizations for gravitational settling and turbulent mix out and wet removal includes in-cloud and below-cloud scavenging (Rasch et al., 2000; Zender et al., 2003; Mahowald et al., 2006). The in-cloud aerosol removal rate is proportional to the fraction of cloud water that precipitates; some of the falling precipitation is allowed to re-evaporate (Rasch and Kristjánsson, 1998; Rasch et al., 2000). CAM4 allows for multiple cycles of condensation and evaporation (Gent et al., 2011; Hurrell et al., 2013; Neale et al., 2013) in order to match observational estimates of approximately three in-cloud cycles for aerosols (Lelieveld et al., 1998; Crutzen and Zimmermann, 1991); the model time step is 30 min with 20 sub-time steps for in-cloud chemistry. Modifications from the release version include changes to the scavenging coefficients (from 0.1 to 0.3 for bins 3 (2.5–5.0  $\mu\text{m}$ ) and 4 (5.0–10.0  $\mu\text{m}$ )), to the prescribed particle solubility from 0.15 to 0.3 across all size bins, and to the threshold for dust generation of the leaf area index from 0.15 up to 0.3 (Lancaster and Baas, 1998; Mahowald et al., 2006; Okin, 2008; Albani et al., 2014; Scanza et al., 2015). The dust module was tuned to best match aerosol optical depth (AOD), deposition and surface concentration data (Albani et al., 2014). Similar to other models (Huneeus et al., 2011), our model is unable to simultaneously match the surface concentration

and deposition data in remote regions (Fig. 3 in Albani et al., 2014), and since here we only show concentration data, it will appear the model over-predicts the surface concentration of dust.

## 2.2 Mineralogy

Mineralogy maps are derived from (Claquin et al., 1999) and are gridded using FAO/UNESCO WGB84 at  $5' \times 5'$  arcmin with soil legend 184 from FAO/UNESCO Soil Map of the World (1976; file identifier: f7ccd330-bdce-11db-a0f6-185-000d939bc5d8) (Batjes, 1997). The conversion from soil to aerosol mineralogy for each transport bin follows the brittle fragmentation theory of dust (Kok, 2011) and is described in detail in Scanza et al. (2015). The mineralogy maps are based on measurements performed following wet sieving, a process that destroys the mineral aggregates found in unperturbed parent soils. The brittle fragmentation theory reconstructs the mineral aggregation found at emission, allowing for more accurate reproduction of size-resolved dust and iron concentrations (Perlwitz et al., 2015a, b; Pérez García-Pando et al., 2016; Ito and Shi, 2016). We determine iron concentrations at emission from the derived aerosol mineralogy; therefore, we eliminate the need to explicitly advect individual mineral tracers with the exception of calcite in order to parameterize the buffer effect of mineral dust on aerosol pH (Böke et al., 1999). Evaluation of the mineral distributions against observations of dust plume events showed some skill in the simulation of concentrations of minerals (Scanza et al., 2015); in addition, the resulting elemental distributions of iron, aluminium and calcium were improved through the use of the soil map (Zhang et al., 2015).

## 2.3 Determination of iron

Iron in mineral dust is found in several forms and the solubility depends on the type of chemical bonding (or compositional form) (i.e., iron oxides vs. aluminosilicate inclusions) (Lafon et al., 2004; Journet et al., 2008) and on the particle size (Baker and Jickells, 2006). The type of iron is mineral dependent: aluminosilicates contain Fe inclusions as well as surface coatings of nanohematite and ferrihydrite (Shi et al., 2009, 2012; Ito and Xu, 2014). Fe associated with hematite and goethite is tightly bound to oxygen in iron oxides or hydroxides, is typically larger in size and is less soluble. Following previous studies, we define the Fe concentration in mineral dust as follows: 57.5 % Fe in hematite, 11 % in smectite, 4 % in illite, 0.24 % in kaolinite and 0.34 % in feldspar (Journet et al., 2008; Ito and Xu, 2014). Three types of dust Fe are simulated in the model: readily released iron ( $Fe_{RR}$ ), moderately soluble iron ( $Fe_{med}$ ), and weakly soluble or refractory iron ( $Fe_{slow}$ ). The  $Fe_{RR}$  is assumed here as 2.7 % of the 4 % Fe in illite as ferrihydrite, 5 % of the 11 % Fe in smectite as nanohematite, 4.3 % of the 0.24 % Fe in kaolinite and 3 % of the 0.34 % Fe in feldspar.  $Fe_{med}$  is defined

as the remaining 97.3 % and 95 % Fe in illite and smectite, respectively.  $Fe_{slow}$  is defined as the remaining 95.7 % Fe in kaolinite, 97 % in feldspar and 100 % of the 57.5 % Fe in hematite (Table S1 in the Supplement). Separate tracers are defined for total moderately soluble iron ( $Fe_{med}$ ) and weakly soluble iron ( $Fe_{slow}$ ) in each of the four CAM4 size bins along with separate tracers for moderately and weakly soluble iron ( $Fe_{S_{med}}$  and  $Fe_{S_{slow}}$ ). In the finest particle size bin (0.1–1.0  $\mu\text{m}$ ), as an approximation, we assume that  $Fe_{RR}$  has already been solubilized and is added as  $Fe_{S_{med}}$  at emission (Ito and Xu, 2014). In bins 2–4, the  $Fe_{RR}$  associated with kaolinite and feldspar is also assumed to be solubilized (Ito and Xu, 2014) along with one quarter of the  $Fe_{RR}$  associated with illite and smectite and is prescribed to  $Fe_{S_{med}}$  at emission. The distribution of iron from the silt and clay fractions in the soils follows the brittle fragmentation theory of dust emission (Kok, 2011) and is described in more detail in Scanza et al. (2015) in Table 2a.

Total iron in combustion aerosols ( $Fe_{comb}$ ) is prescribed and industrial sources of iron are emitted following Luo et al. (2008). Biomass burning is assumed to have a ratio of 0.02 g Fe / g BC in the fine mode and 1.4 g Fe / g BC in the coarse mode (Luo et al., 2008).  $Fe_{comb}$  is partitioned in the model transport bins as follows: fine-mode  $Fe_{comb}$  solely comprises the first bin and the coarse-mode combustion iron is apportioned into bins 2–4 at 20 %, 30 % and 50 %, respectively. Separate tracers account for  $Fe_{comb}$  and  $Fe_{S_{comb}}$  with 4 % of  $Fe_{comb}$  assumed already soluble and prescribed to  $Fe_{S_{comb}}$ .

## 2.4 Iron dissolution

Fe dissolution in mineral dust involves complex atmospheric chemical and physical processes. The major processes, i.e., processes that can be observed in laboratory settings, are related to the initial mineral composition, atmospheric temperature and acidity, insolation and concentration of organic acids. In this study, the amount of Fe solubilized in dust is assumed to be irreversible and is calculated using a simplified iron dissolution scheme for three types of iron in dust ( $Fe_{RR}$ ,  $Fe_{med}$  and  $Fe_{slow}$ ). However, we only explicitly simulate  $Fe_{med}$  and  $Fe_{slow}$  both for computational efficiency and because we also assume that a portion of  $Fe_{RR}$  has already been solubilized at emission.

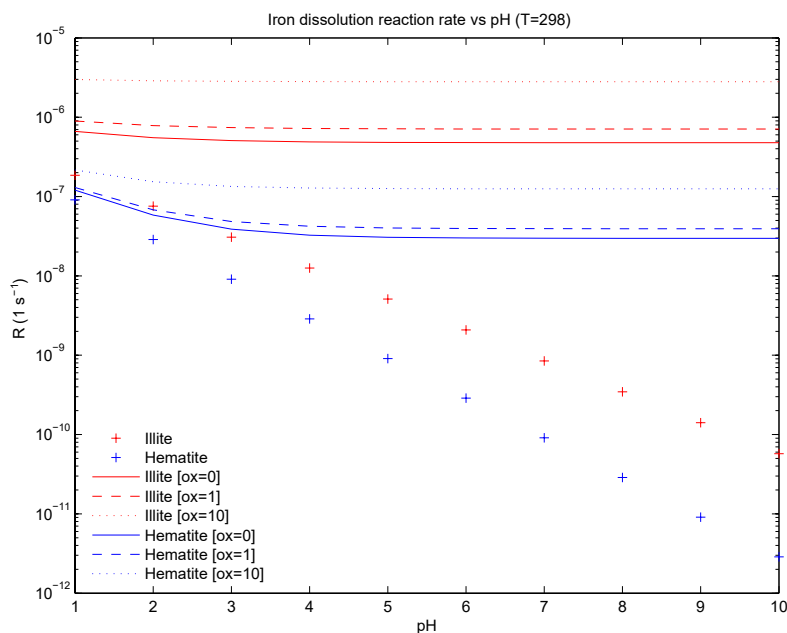
The CAM4 sulfur chemistry model is not configured to interact with dust; thus, the rate of dissolution is only explicitly dependent on temperature and is simplified to a first-order dissolution rate following Eq. (1),

$$RFe_i = K_i(T) \times a(\text{H}^+)^{m_i} \times f(\nabla G_r) \times A_i \times MW_i, \quad (1)$$

$$\frac{d}{dt} [\text{Fe}_{\text{soluble}}] = RFe_i \times [\text{Fe}_{\text{insoluble}}], \quad (2)$$

where  $RFe_i$  is a function of temperature and has units ( $\text{s}^{-1}$ ),  $i$  represents either moderately or weakly soluble Fe,  $K_i(T)$  in units of ( $\text{moles m}^{-2} \text{s}^{-1}$ ) is the temperature-dependent rate





**Figure 1.** Iron dissolution rate for illite and hematite representing moderately soluble iron and weakly soluble iron, respectively. The “+” sign indicates the proton-promoted dissolution rate. Solid, dashed and dotted lines are the addition of the proton-promoted and the oxalate-promoted dissolution rates at  $[\text{oxalate}] = 0$ ,  $[\text{oxalate}] = 1$  and  $[\text{oxalate}] = 10 \mu\text{M}$ , respectively.

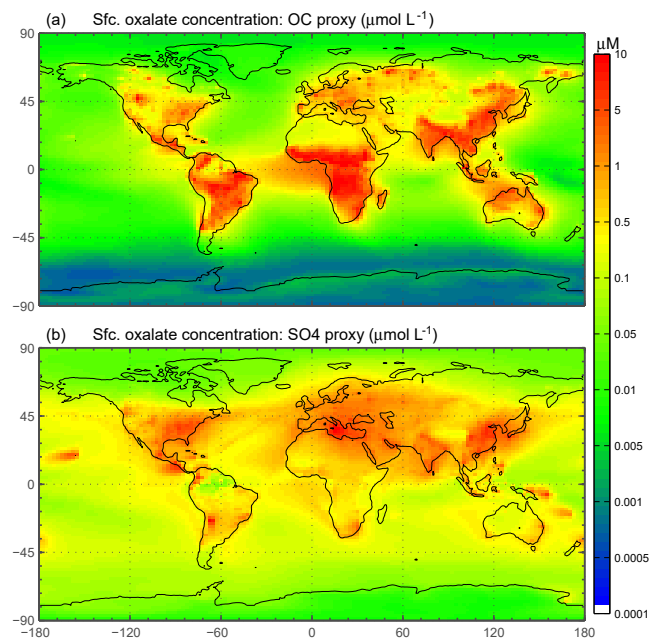
coefficient (Meskhidze et al., 2005),  $a(\text{H}^+)$  is the proton concentration with an empirical reaction order  $m_i$ ,  $f(\nabla G_r)$  accounts for the change in the dissolution rate with variation from equilibrium (and equals 1 for simplicity; Luo et al., 2008),  $A_i$  is the specific surface area of mineral  $i$  in units of  $(\text{m}^2 \text{g}^{-1})$  and  $\text{MW}_i$  is the molecular weight in units of  $(\text{g mol}^{-1})$  for mineral  $i$ . The pH dependence is parameterized from the concentration of calcite and sulfate at each atmospheric grid box and at each time step. When  $[\text{calcite}]_{i,j,k} > [\text{sulfate}]_{i,j,k}$ , pH is set to 7.5; when model sulfate concentration is greater, pH is set to 2 (Journet et al., 2008; Luo et al., 2008).  $\text{Fe}_{\text{med}}$  is comprised of the Fe in illite and smectite; because the mineral abundance of illite is twice that of smectite, we use  $K_{\text{illite}}(T)$  and  $\text{MW}_{\text{illite}}$  for the  $\text{Fe}_{\text{med}}$  dissolution rate as an additional simplification. The dissolution of Fe in hematite proceeds in three stages (Meskhidze et al., 2005) and we use the fastest of the three stages for  $K_{\text{hem}}(T)$  following Ito and Xu (2014) (Fig. 1). The initial concentration of  $\text{Fe}_{\text{scomb}}$  is assumed to be 4% of  $\text{Fe}_{\text{tcomb}}$  (Chuang et al., 2005; Luo et al., 2008) in each size bin and we use the  $\text{Fe}_{\text{med}}$  dissolution rate for the remaining combustion iron.

The impact of including oxalate in an iron dissolution scheme can increase the soluble Fe fraction considerably (Paris et al., 2011; Myriokefalitakis et al., 2011, 2015; Johnson and Meskhidze, 2013; Ito, 2015). Because the formation of atmospheric oxalate is complex, we develop a simple scheme to estimate oxalate concentrations in the model at grid cells within clouds. The concentration of oxalate in

$\mu\text{mol} \text{L}^{-1}$  is calculated as

$$[\text{C}_2\text{O}_4^{2-}]_{i,j,k} = 15 \times \frac{[\text{OC}_{i,j,k}] + [\text{SOA}_{i,j,k}]}{\max[\text{OC} + \text{SOA}]} \quad (3)$$

This simple approximation is liable to add a source of uncertainty into our calculations; however, the spatial distribution of oxalate at the surface (Fig. 2a) is comparable to Fig. 2a, c in Myriokefalitakis et al. (2011), which calculates oxalate concentrations using a full-complexity chemical mechanism. In choosing our reference case (REF), multiple simulations were conducted to best match observations of fractional iron solubility and surface distributions of oxalate (Myriokefalitakis et al., 2011); the factor of 15 in Eq. (1) yielded the best results. Previous studies use sulfate as a proxy for calculating model oxalate concentrations (Yu et al., 2005; Johnson and Meskhidze, 2013), and we conduct a sensitivity study to determine the relative importance of this assumption. Because the sources of OC and secondary organic aerosols (SOA) are different than the sources of sulfate, the distribution is different between these two “proxies” for oxalate; the OC + SOA in our model appears to be a better proxy. There tends to be more oxalate in the model simulations in tropical regions (Fig. 2 from Myriokefalitakis et al., 2011), which is better captured in our model simulations using the OC + SOA versus the sulfate proxy for modeled oxalate concentrations.



**Figure 2.** Spatial distribution of annually averaged surface (Sfc.) oxalate concentrations ( $\mu\text{M}$ ). Oxalate concentrations are derived from modeled organic carbon concentrations (a) and from modeled sulfate concentrations (b).

The oxalate-dependent reaction rate is then added to the first-order dissolution rate (Eq. 1) using the model-derived oxalate concentration from Eq. (3):

$$\text{RFe}_i = K_i(T) \times a(\text{H}^+)^{m_i} \times f(\nabla G_r) \times A_i \times \text{MW}_i + K_{i,\text{oxalate}}, \quad (4)$$

where  $K_{i,\text{oxalate}}$  is

$$K_{i,\text{oxalate}} = a_i \times [\text{C}_2\text{O}_4^{2-}] + b_i. \quad (5)$$

Coefficients  $a_i$  for illite and hematite are determined from the slope of the best fit of the data in Table 4 in Paris et al. (2011) and  $b_i$  for illite and hematite correspond to the intercept of the best-fit equations. For illite,  $a = 2.3 \times 10^{-7} \mu\text{M}^{-1} \text{s}^{-1}$  and  $b = 4.8 \times 10^{-7} \text{s}^{-1}$  and, for hematite,  $a = 9.5 \times 10^{-9} \mu\text{M}^{-1} \text{s}^{-1}$  and  $b = 3.0 \times 10^{-8} \text{s}^{-1}$ . The iron dissolution rate at  $[\text{C}_2\text{O}_4^{2-}] = 0$  utilizes Paris et al. (2011) with our method for best fit, which was a result of multiple different simulations where the intercept was examined to find the best match to observations of %Fes. The nonzero intercept for  $K_{i,\text{oxalate}}$  accounts for (non-oxalate) in-cloud organic ligand processing.

The reference case is simulated under present-day climate conditions and includes the enhancement of oxalate on the rate of soluble Fe formation in cloudy grid boxes only while Eq. (1) is applied at every atmospheric model grid box. Separate tracers are included for dust and for total and soluble iron in dust for  $\text{Fe}_{\text{med}}$  and  $\text{Fe}_{\text{slow}}$  as well as tracers for total

and soluble combustion iron. Calcite is advected to estimate the buffering effect of dust on the pH dependence of the dissolution scheme at each atmospheric model grid box (8 new species  $\times$  4 bins + 9 = 41 total tracers added here compared to the original model which has 5 species carried as 13 total tracers to simulate aerosols for climate interactions).

## 2.5 Sensitivity studies

To investigate the impact on soluble Fe formation of various parameters, we include six sensitivity studies (Table 1a). In the first experiment (SS1), the oxalate mechanism is removed and the formation of Fes depends solely on the proton-promoted dissolution rate; the basis for this was to determine if the additional complexity of the oxalate scheme was required to match observations of labile iron. The second sensitivity study (SS2) is identical to the reference case but with model oxalate concentrations estimated from sulfate, was performed because other studies of Fe dissolution use sulfate as a proxy for estimating model oxalate concentrations and follows Eq. (4):

$$[\text{C}_2\text{O}_4^{2-}]_{i,j,k} = 15 \times \frac{[\text{SO}_4^{2-}]_{i,j,k}}{\max[\text{SO}_4^{2-}]}, \quad (6)$$

in units of  $\mu\text{M}$ . The third sensitivity study (SS3) investigates how important our dissolution mechanism is by comparing to a very simple dissolution scheme from Hand et al. (2004). In this scheme, soluble iron dissolution depends upon cloud presence as parameterized by Eq. (2) in Hand et al. (2004). Total iron is assumed to be 3.5% of dust and Fes is calculated from  $\kappa \cdot (\text{Fet} - \text{Fes})$  at each cloudy grid box, where  $\kappa$  is defined in Eq. (2) in Hand et al. (2004) as  $\sum_{i,j} \frac{C_{i,j}}{C_{\text{avg}}} \frac{1}{\tau_{\text{cld},\text{sol}}}$ :  $C_{i,j}$  is the cloud fraction at each atmosphere grid box,  $C_{\text{avg}}$  is the average cloud fraction at  $10^\circ \text{N}$  and  $\tau_{\text{cld},\text{sol}}$  is the soluble decay lifetime (Siefert et al., 1998; Saydam and Senyuva, 2002; Hand et al., 2004). Hand et al. (2004) did not take into account iron from combustion aerosols and there is a wide range of reported dust Fe solubilities at emission 0.1 to 1+ % (Luo et al., 2008; Jickells et al., 2005; Shi et al., 2012; Johnson and Meskhidze, 2013; Ito and Xu, 2014). To account for the typically higher solubilities associated with combustion iron, and using the ratio Fes/Fet for dust iron (Table S2d), we assume an initial solubility for combustion and dust Fe of 4% and 0.89%, respectively; this corresponds to an enhancement of 4.5 times and hence we chose, somewhat arbitrarily, to increase the dissolution rate by a factor of 5. The total number of tracers for SS3 is 20 ( $\text{Fet}_{\text{dust}}$ ,  $\text{Fet}_{\text{comb}}$ ,  $\text{Fes}_{\text{dust}}$ ,  $\text{Fes}_{\text{comb}}$  and dust in each of the four size bins). In the fourth sensitivity study (SS4), the spatial dependence of iron on mineralogy is removed and we apply the global average fraction from the reference case for calcite,  $\text{Fet}_{\text{med}}$ ,  $\text{Fet}_{\text{slow}}$  and  $\text{Fes}_{\text{med}}$  at emission. The fifth and sixth simulations (SS5 and SS6) are identical to REF and

**Table 1. (a)** List of current climate simulation used in this study.  $[H^+]$  indicates proton-promoted aerosol water iron processing.  $C_2O_4^{2-}$  OC-proxy is the parameterization for in-cloud iron processing including the oxalate parameterization derived from model concentrations of organic carbon and secondary organic carbon.  $C_2O_4^{2-}$  SO<sub>4</sub>-proxy calculates oxalate concentration from model sulfate concentrations. SS4 tracers have no spatial dependence on mineralogy and have prescribed global average fractions from the reference case (REF) at emission. **(b)** List of preindustrial simulations used in this study. Preindustrial simulations assume pH = 2 when model concentrations of sulfate are greater than calcite.

(a)	$[H^+]$	$C_2O_4^{2-}$ OC-proxy	$C_2O_4^{2-}$ SO <sub>4</sub> -proxy	pH
REF	×	×		2
SS1	×			2
SS2	×		×	2
SS3	n/a	n/a	n/a	n/a
SS4 (no mineralogy)	×	×		2
SS5	×	×		1
SS6	×		×	1

(b)	$[H^+]$	$C_2O_4^{2-}$ OC-proxy	$C_2O_4^{2-}$ SO <sub>4</sub> -proxy	Emissions	Dust source	PI combustion
PI1	×	×		×		
PI2	×	×		×	×	
PI3	×	×		×	×	×
PI4	×		×	×	×	×

n/a: not applicable.

SS2, respectively; however, pH is set to 1 instead of 2 when sulfate concentrations are greater than calcite concentrations. Because recent studies have identified highly acidic aerosol solutions (Weber et al., 2016; Guo et al., 2016), we wanted to test if the increase in the iron dissolution would better match observations of labile iron solubility.

## 2.6 Preindustrial simulations

Four preindustrial simulations are performed using the iron dissolution mechanism described in Sect. 2.4. Here we refer to “preindustrial chemistry” as historical emissions for CMIP5 (Lamarque et al., 2010), which includes reduced emissions for sulfate, OC and BC. The first simulation (PI1) has preindustrial chemical emissions (1850) but current climate dust and combustion sources. The second simulation (PI2) includes preindustrial chemistry and dust sources with current combustion. PI3 follows PI2 with preindustrial combustion sources and PI4 is identical to PI3 with the sulfate proxy used for calculating model oxalate concentrations instead of the OC + SOA proxy (Table 1).

## 2.7 Comparison to observations

Observations of total and soluble iron are complicated due to various collection methods (e.g., using different collection substrates and sampling with or without particle size segregation), different filter sizes used to define the soluble iron fraction, different solvents used for extraction (which determines the species of iron defined as soluble) and myriad definitions

of the form of iron which is in fact soluble. The majority of observations are collected during cruise campaigns (daily means) as surface concentrations or dry deposition of particulate matter. These sampling campaigns inherently fail to capture the ephemeral nature of aerosol transport over ocean basins, varying in both space and time. Aerosol collections are later leached in one or more solvents to extract the soluble iron fraction from the insoluble component. A handful of alternative collection methods have been used, including the sampling of aerosols at 70 m above ground level (Winton et al., 2015) over periods of 1 to 7 weeks, the ACE-Asia campaign that sampled total suspended particles at the surface (Chuang et al., 2005) during dust storms and the collection of rainwater (wet deposition) at 2 m above ground in the remote Southern Ocean (Heimbürger et al., 2013). Solvents used for extraction range from acidic solutions and ultra-pure water to alkaline seawater, with obvious differences in soluble iron yield due to the differences in acidity. The definition of soluble iron is rather ambiguous in part due to the field of study (i.e., oceanography, atmospheric science), the leaching solution and the oxidation state of dissolved iron. In this study, we attempt to compare our model only to observations of labile iron, which we define as dissolved iron in either the ferrous or ferric oxidation state.

Fine-mode and coarse-mode total and labile iron in the model is compared to available published observations from Baker et al. (2006a, b) and Chen and Siefert (2004) along with previously unpublished fine- and coarse-mode total and labile iron observations from Clifton Buck (personal communication, 2013, 2017). Bulk total and labile iron observa-

**Table 2.** Root mean square error (RMSE) for the reference case (REF) and for sensitivity studies 1–6. REF: proton-promoted and oxalate-promoted iron dissolution; SS1: proton-promoted iron dissolution; SS2: REF with oxalate dependent on sulfate; SS3: simple cloud parameterization for iron dissolution (Hand et al., 2004); SS4: REF with no spatial dependence on mineralogy; SS5: REF, pH = 1; SS6: SS2, pH = 1.

RMSE	REF	SS1	SS2	SS3	SS4	SS5	SS6
Fe <sub>s</sub> <sub>fine</sub>	5.9	6.1	5.9	6.6	6.2	5.9	5.9
Fe <sub>s</sub> <sub>coarse</sub>	26.5	13.8	27.9	5.3	20.7	27.2	28.6
Fe <sub>s</sub> <sub>total</sub>	25.5	17.1	26.72	9.2	19.4	26.1	27.3
Fe <sub>t</sub> <sub>fine</sub>	190.6	190.6	190.6	193.2	194.1	190.6	190.6
Fe <sub>t</sub> <sub>coarse</sub>	1448.4	1448.6	1448.0	1356.6	1241.8	1448.4	1447.9
Fe <sub>t</sub> <sub>total</sub>	2432.1	2432.2	2432.0	1149.2	2362.6	2432.1	2432.0
%Fe <sub>s</sub> <sub>fine</sub>	19.5	20.3	19.4	20.6	19.9	19.6	19.4
%Fe <sub>s</sub> <sub>coarse</sub>	7.1	7.6	6.9	7.5	7.1	7.4	7.2
%Fe <sub>s</sub> <sub>total</sub>	9.7	10.7	9.5	10.5	9.9	10.1	9.9

tions that do not distinguish particle sizes are from supplementary Table 2 provided in Mahowald et al. (2009), from Sholkovitz et al. (2012) and from Baker et al. (2016). A set of metrics is developed to compare model simulations with the available observations to determine which set of parameterizations is necessary. The root mean square error (RMSE) is

calculated for model versus observations as  $\sqrt{\frac{\sum_{i=1}^n (\text{mod}_i - \text{obs}_i)^2}{n}}$

for total iron, labile iron and solubility (fine, coarse and fine + coarse). Similarly, the Pearson correlation coefficient is calculated between the model and observations. As a main metric in evaluating model performance, we develop a semi-quantitative metric defined as the mean of model values at grid boxes with observations divided by the mean of the observations and will hereafter refer to this metric with the acronym MMO. The MMO does not intend to evaluate the model's ability to capture observational variability but simply to assess if the model can reasonably estimate the observational mean.

### 3 Results

#### 3.1 Comparison of observations to the reference case

In order to assess the ability of the model to simulate total, soluble iron and fractional iron solubility, model results are compared to available observations for fine- (diameter < 1 μm), coarse- (1 μm ≥ diameter ≤ 10 μm) and bulk-mode particles (all sizes) as most available observations do not differentiate particle size. The total iron at emission is calculated based on the distribution of minerals containing iron (Journet et al., 2008; Ito and Xu, 2014; Scanza et al., 2015); Fe<sub>t</sub> is approximately 3.2 % of dust which is comparable to the assumption that 3.5 % of dust is comprised of iron (Hand et al., 2004). Simulated surface concentrations of total iron in the fine and coarse mode are under- and over-predicted,

respectively, compared to observations. Because 98 % of Fe<sub>t</sub> has prescribed diameters > 1 μm, Fe<sub>t</sub> is overestimated in the tropical and northern latitudes (near source regions) and underestimated below 15° S (Fe < 1 μm is more likely to undergo long-range transport). Because there are relatively few observations that distinguish the particle size distribution of iron, the significance of comparing total iron surface concentrations is difficult to assess; however, the model is underestimating the dynamic range in the observations (Fig. S1 in the Supplement). This is likely due in part to the fact that we are comparing annually averaged concentrations to observations that are influenced by daily weather fluctuations. Because the dust model used in this study was optimized to best capture observations of particle size distribution, deposition and aerosol optical depth (Figs. 8, 9 in Albani et al., 2014), surface concentrations of dust are generally over-predicted with the exception of remote Southern Hemisphere (SH) ocean regions. In addition, most dust models exhibit a low bias in SH dust deposition (Huneeus et al., 2010, 2011; Albani et al., 2014). Hence, it is not possible to simultaneously match dust deposition, AOD and surface concentrations. Separating total and soluble iron allows us to identify these signals and to evaluate the fractional iron solubility.

Fine-mode labile iron (Fe<sub>s</sub>) surface concentrations are within the range of the observations in the tropical and northern latitudes and are underestimated off the coast of Patagonia; a significant limitation arises from the lack of observations in the regions where iron deposition should have the largest impact (see Sect. 3.3). Coarse-mode Fe<sub>s</sub> is considerably over-predicted by the model, which is consistent with the model bias in dust surface concentrations, resulting in an overestimate in the total concentration of Fe<sub>s</sub> (Fig. S2) (individual fine- and coarse-mode Fe<sub>s</sub> distributions not shown). Therefore, the fractional iron solubility at the model surface provides a more meaningful comparison to observations and facilitates the evaluation of the iron-processing mechanism. In addition, examining total iron and percent solubil-

ity separately allows us to evaluate the distribution and the solubilization of iron as distinct processes, thereby simplifying the identification and resolution of model biases in these two processes. However, additional uncertainty is introduced by considering the distributions of  $F_{\text{et}}$  and  $\%F_{\text{es}}$  separately since, inherently, they are coupled. For example, erroneously high dust emissions would result in fractional solubilities that are biased low because of this coupling.

When considering percent labile iron, theory and observations support lower solubilities near dust sources where pH is likely higher (due to the presence of calcite in dust) and where lithogenic iron has not yet undergone significant atmospheric processing; in contrast, because combustion sources are typically associated with emissions of acidic species, we expect the solubility of anthropogenic aerosols to be higher (Li et al., 2017). However, because dust iron emissions are an order of magnitude greater than emissions of combustion iron, lower solubilities near coastal regions should be dominant. In particular, we hypothesize that the simulations will predict higher percentages of  $F_{\text{es}}$  over remote ocean regions and, indeed, our simulations are consistent with our hypothesis; this is in line with theory and observations that show the gravitational settling of larger, less soluble iron containing aerosols near their source and long-range transport of smaller aerosols enabling multiple cycles of evaporation and condensation (Jickells et al., 2005; Baker and Croot, 2010). Simulated  $\%F_{\text{es}} < 1 \mu\text{m}$  is small off the coast of North Africa and Patagonia and is an order of magnitude higher in the equatorial Pacific and southern latitude ocean regions (Fig. 3b). The relatively few observations indicate reasonable agreement with the model near and directly downwind of North Africa; however, there are few observations to substantiate the predictions of higher solubilities in the HNLC regions (Fig. 3a). One standard deviation from the mean of daily averaged model concentrations indicates that the model is within range of the observations (Fig. 3c). The spatial distribution of coarse-mode  $\%F_{\text{es}}$  is similar to the fine mode, and again our comparison is limited by the lack of observations (Fig. 4). Simulations of the sum of the fine- and coarse-mode  $\%F_{\text{es}}$  show greater spatial heterogeneity in the Southern Hemisphere and less variation in the Northern Hemisphere (Fig. 5). While the scatterplot comparing annually averaged  $\%F_{\text{es}}$  versus daily cruise-based observations suggests that the model is not capturing the range of the observations, the daily averaged standard deviations for each model value indicate that our mechanism can generally capture the observations. Thus, with MMO equal to 0.86, we conclude that the soluble-iron-processing mechanism employed is a reasonable representation of the atmospheric processing that dust and combustion aerosols undergo during transport.

### 3.2 Evaluation of sensitivity studies

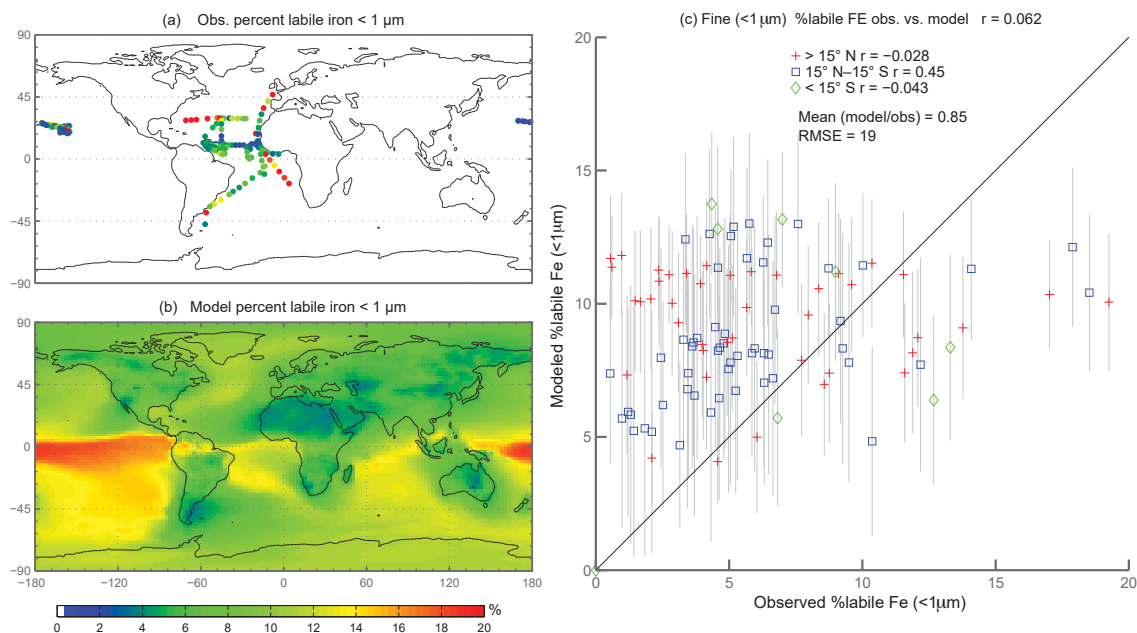
Atmospheric iron dissolution is very complex and required many simplifications and assumptions in order to simulate

the processes involved. In this study, we develop a set of metrics to evaluate the strengths and weaknesses of our proposed iron dissolution scheme and to assess its ability to capture the true processing of atmospheric aerosols. For each simulated variable, we compare the results to available observations and calculate the RMSE (Table 2), the MMO (Table 3) and the correlation coefficient (Table 4) for the reference case and for each sensitivity study. When considering RMSE for fractional iron solubility for each case, REF compared to SS2 (oxalate calculated with a sulfate proxy), SS4 (no dependence on mineral spatial distribution at emission) and SS5–6 (higher acidity) has similar errors. SS1, the case without oxalate processing, and SS3, which corresponds to the very simple dissolution method from Hand et al. (2004), are both associated with larger errors, indicating that the very simple mechanism (SS3) and mechanism solely based on acidic processing (SS1) are not sufficient representations. The correlation coefficients across all cases are weak, especially for the fractional iron solubilities.

In order to counter the ambiguity surrounding which mechanism best matches observations, we believe the semi-quantitative MMO metric is more meaningful. A ratio greater than 1 indicates that the model is over-predicting iron while a ratio less than 1 signifies an underestimation compared to the mean of the observations. The reference case was chosen from many different simulations with varying parameters after carefully reviewing the spatial distributions of soluble iron as well as the model metrics. Although SS5 and SS6 most closely match the observational mean for total fractional iron solubility, the pH when the concentration of sulfate is greater than calcite ( $\text{pH} = 1$ ) is not typically considered realistic in atmospheric waters. Recent studies that identify highly acidic aerosol solutions warrant more investigation as to whether SS5 and SS6 are in fact better representations of atmospheric iron processing. SS1 and SS3 greatly underestimate the observed mean for fractional iron solubility, leading to the conclusion that the oxalate enhancement within an iron dissolution scheme is a vital inclusion.

### 3.3 Regional and global iron deposition to ocean basins

Soluble iron deposition to global ocean basins from dust and combustion aerosols is a significant source of new iron, a limiting nutrient in many regions. This represents an important biogeochemical process that may indirectly impact climate via a cooling effect by promoting the uptake of atmospheric  $\text{CO}_2$ . The global ocean is divided into 12 regions (Table S4) defined by Gregg et al. (2003) in order to quantify deposition to ocean regions that are most likely to be iron limited. Annually averaged global deposition of total and soluble iron from dust to the oceans is  $17.4 \%$  and  $0.54 \text{ Tg yr}^{-1}$ , respectively, and corresponds to the dissolution of  $3.1 \%$  of dust iron during atmospheric transport. Including the contribution from combustion iron increases the soluble iron deposition to  $3.3 \%$  of total iron. This is within the ranges reported (model:



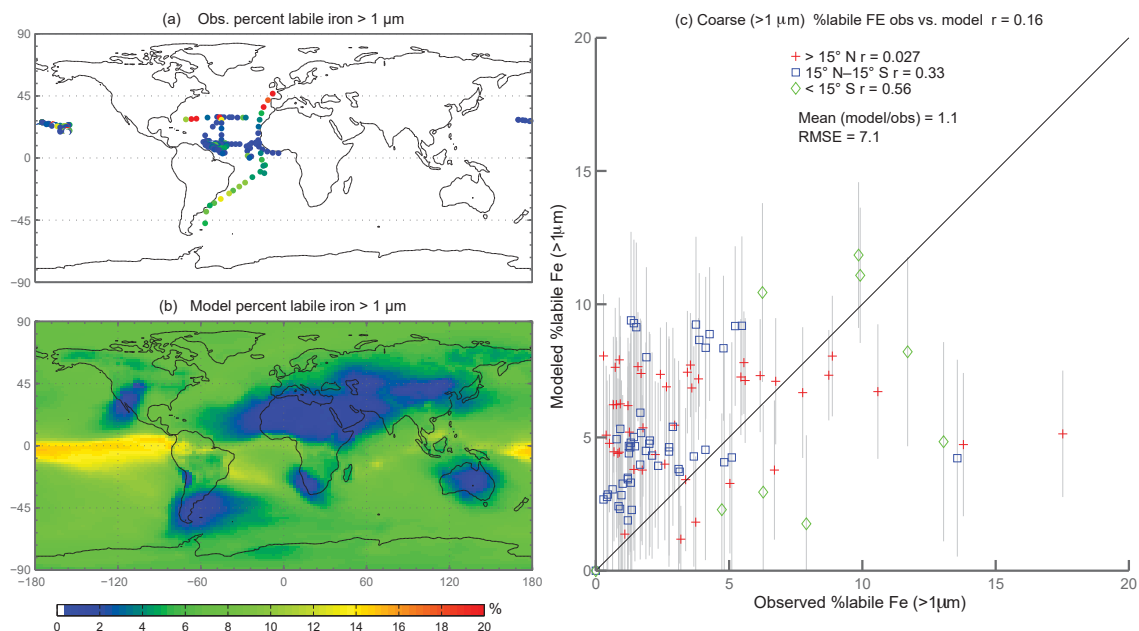
**Figure 3.** Observations (a) and modeled surface concentrations (b) of percent labile iron for particle diameter < 1 μm. Scatterplot of observed fine-mode percent labile Fe versus modeled fine-mode percent labile Fe (c). Red crosses indicate observations about 15° N, blue boxes indicate observations between 15° S and 15° N, and green diamonds indicate observations below 15° S. Grey vertical lines correspond to 1 standard deviation of model daily averaged concentrations between 2007 and 2011.

**Table 3.** Mean of model at grid boxes with observations divided by the mean of the observations for the reference case (REF) and for sensitivity studies 1–6. In the last two rows,  $\tau$  is the annually averaged global mean insoluble iron turnover time (days) and is defined as the total insoluble iron from dust and combustion aerosols divided by the production of soluble iron from insoluble iron. Mean %Fes<sub>dep</sub> is the annually averaged global mean fractional iron solubility at deposition (%).

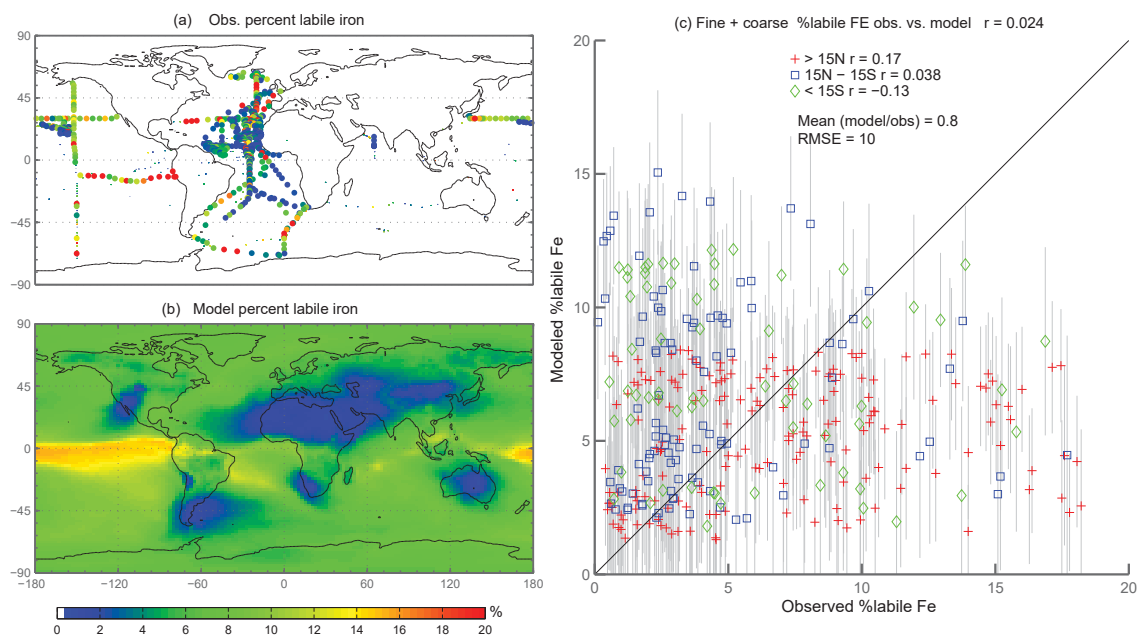
MEAN (mod/obs)	REF	SS1	SS2	SS3	SS4	SS5	SS6
Fes <sub>fine</sub>	0.70	0.47	0.69	0.09	0.24	0.73	0.72
Fes <sub>coarse</sub>	6.80	2.89	6.90	1.58	5.37	7.09	7.19
Fes <sub>total</sub>	2.61	1.21	2.65	0.66	1.92	2.74	2.78
Fet <sub>fine</sub>	0.33	0.33	0.33	0.23	0.21	0.33	0.33
Fet <sub>coarse</sub>	4.09	4.09	4.09	3.72	3.42	4.09	4.08
Fet <sub>total</sub>	1.32	1.33	1.33	1.68	1.11	1.32	1.32
%Fes <sub>fine</sub>	0.85	0.44	0.82	0.33	0.64	0.98	0.95
%Fes <sub>coarse</sub>	1.14	0.36	1.09	0.38	1.06	1.32	1.27
%Fes <sub>total</sub>	0.86	0.32	0.85	0.40	0.80	1.02	1.01
$\tau$	1579	5440	1569		1489	841	834
mean %Fes <sub>dep</sub>	3.26	1.20	3.14	0.86	2.91	3.49	3.37

$4 \pm 2\%$ , observations:  $6 \pm 8\%$ ) for global soluble iron deposition from Ito and Xu (2014). The soluble iron deposition for SS1 is much smaller (1.2%), indicating that including the oxalate scheme increases the amount of Fes deposition by nearly 3 times.

Iron is a limiting nutrient in remote ocean regions, with these basins defined as follows: the Antarctic basin (ocean regions south of 30° S); the southern Atlantic, Pacific and Indian Ocean basins (30–10° S); and the equatorial Pacific basin (Table S4). These five basins comprise around 60% of the global ocean but only receive 3.5% of the dust deposition, which is the main source of new iron to these regions (Table 5a). The Antarctic basin receives just 2.4% of the globally deposited bioavailable iron; the south Indian



**Figure 4.** Observations (a) and modeled surface concentrations (b) of percent labile iron for particle diameter  $> 1 \mu\text{m}$ . Scatterplot of observed coarse-mode percent labile Fe versus modeled coarse-mode percent labile Fe (c). Red crosses indicate observations about  $15^\circ \text{N}$ , blue boxes indicate observations between  $15^\circ \text{S}$  and  $15^\circ \text{N}$ , and green diamonds indicate observations below  $15^\circ \text{S}$ . Grey vertical lines correspond to 1 standard deviation of model daily averaged concentrations between 2007 and 2011.



**Figure 5.** Observations (a) and modeled surface concentrations (b) of percent labile iron. Scatterplot of observed fine-mode percent labile Fe versus modeled fine-mode percent labile Fe (c). Red crosses indicate observations about  $15^\circ \text{N}$ , blue boxes indicate observations between  $15^\circ \text{S}$  and  $15^\circ \text{N}$ , and green diamonds indicate observations below  $15^\circ \text{S}$ . Grey vertical lines correspond to 1 standard deviation of model daily averaged concentrations between 2007 and 2011.



**Table 4.** Correlation coefficients for the reference case and sensitivity studies 1–6.

Correlation coefficient	REF	SS1	SS2	SS3	SS4	SS5	SS6
Fes <sub>fine</sub>	0.324	0.275	0.319	0.274	0.349	0.323	0.318
Fes <sub>coarse</sub>	0.511	0.442	0.518	0.520	0.509	0.511	0.518
Fes <sub>total</sub>	0.310	0.250	0.310	0.418	0.310	0.310	0.310
Fet <sub>fine</sub>	0.270	0.270	0.270	0.271	0.271	0.270	0.270
Fet <sub>coarse</sub>	0.298	0.298	0.298	0.286	0.286	0.298	0.298
Fet <sub>total</sub>	0.123	0.123	0.123	0.396	0.123	0.123	0.123
%Fes <sub>fine</sub>	0.062	0.046	0.117	0.070	0.050	0.054	0.092
%Fes <sub>coarse</sub>	0.157	0.155	0.242	0.233	0.143	0.153	0.212
%Fes <sub>total</sub>	0.026	0.070	0.090	0.047	0.140	0.010	0.051

**Table 5. (a)** Global ocean and regional ocean basin total deposition for dust ( $\text{Tg yr}^{-1}$ ), total iron from dust and combustion, labile iron in dust and combustion aerosols ( $\text{Gg yr}^{-1}$ ). **(b)** Global ocean and regional ocean basin fractional iron solubility for fine, coarse and total dust and combustion iron, total fractional iron solubility from both dust and combustion, and the fraction of percent soluble combustion iron to total fractional iron solubility.

(a)	Dust	Fet <sub>med</sub>	Fet <sub>slow</sub>	Fes <sub>med</sub>	Fes <sub>slow</sub>	Fe <sub>comb</sub>	Fes <sub>comb</sub>
	( $\text{Tg yr}^{-1}$ )	(Gg yr <sup>-1</sup> )					
Global	513.3	13 073.7	4278.1	530.1	7.8	586.1	47.7
North Atlantic	147.5	3702.7	1074.1	94.8	1.0	69.5	4.1
North Pacific	20.5	611.4	165.1	35.6	0.6	123.8	8.2
N. central Atlantic	108.3	2792.7	832.9	105.1	1.3	13.8	1.5
N. central Pacific	6.4	196.7	53.0	15.5	0.3	30.3	2.3
N. Indian Ocean	139.4	3180.7	1319.9	84.9	1.3	59.3	4.0
Eq. Atlantic	63.0	1918.8	593.0	169.7	2.7	88.8	11.3
Eq. Pacific	1.8	60.2	16.2	6.7	0.1	15.1	1.7
Eq. Indian Ocean	30.5	787.5	216.1	34.5	0.7	89.0	6.2
South Atlantic	3.0	69.5	28.7	4.3	0.1	38.3	3.3
South Pacific	0.5	15.2	8.1	1.0	0.1	16.7	1.1
S. Indian Ocean	1.0	29.1	12.2	3.0	0.1	35.6	2.5
Antarctic	11.8	297.6	128.6	8.5	0.2	55.3	5.4

(b)	%Fe <sub>fine</sub>	%Fe <sub>coarse</sub>	%Fe	%Fec <sub>fine</sub>	%Fec <sub>coarse</sub>	%Fec	%Fes <sub>d+c</sub>	%Fec/Fes <sub>d+c</sub>
	Global	8.56	0.28	3.10	10.36	7.68	8.14	3.26
North Atlantic	6.59	1.91	2.01	7.90	5.61	5.89	2.06	4.10
North Pacific	8.53	4.47	4.66	8.01	6.28	6.60	4.92	18.44
N. central Atlantic	7.99	2.80	2.93	14.95	9.74	10.88	2.96	1.39
N. central Pacific	10.93	0.75	6.35	9.67	7.15	7.66	6.49	12.78
N. Indian Ocean	6.57	1.84	1.91	8.76	6.37	6.75	1.98	4.44
Eq. Atlantic	10.72	6.64	6.86	14.87	12.22	12.75	7.06	6.17
Eq. Pacific	13.08	8.62	8.97	13.71	10.58	11.33	9.37	19.99
Eq. Indian Ocean	10.08	3.34	3.51	8.87	6.60	6.94	3.79	14.93
South Atlantic	12.79	4.17	4.42	10.86	8.33	8.70	5.62	43.42
South Pacific	10.77	4.16	4.40	9.72	6.36	6.78	5.40	52.44
S. Indian Ocean	12.01	7.19	7.47	8.99	6.63	6.94	7.23	44.50
Antarctic	6.78	1.92	2.03	11.20	9.37	9.78	2.92	38.45

Ocean, Pacific and Atlantic basins receive 0.9 %, 0.4 % and 1.3 % of bioavailable iron; and the equatorial Pacific basin receives 1.5 %. As such, the global HNLC regions receive just a small fraction of the total bioavailable iron deposited to

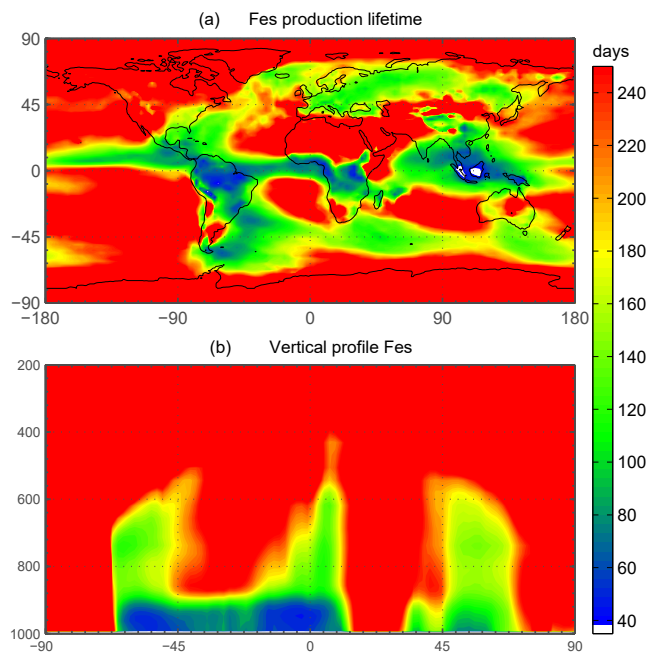
the ocean surface (6.5 %). The total fractional iron solubility (dust and combustion sources) for the equatorial Pacific, the south Atlantic, Pacific and Indian Ocean, and the Antarctic basins is largely influenced by the contribution from com-

bustion (Table 5b). In general, we observe that the percent of bioavailable iron reaching different ocean basins is significantly affected by both the location of clouds (e.g., oxalate) and combustion sources. For example, SS2, the simulation where global oxalate concentrations are calculated via the sulfate proxy rather than the organic carbon proxy results in decreased fractional iron solubility in the Southern Hemisphere and equatorial ocean basins and increased solubility in the northern basins. The latitudinal shift in the spatial distribution of modeled oxalate concentrations (Fig. 2) clearly explains the spatial differences in the labile iron percentages reaching the different ocean basins.

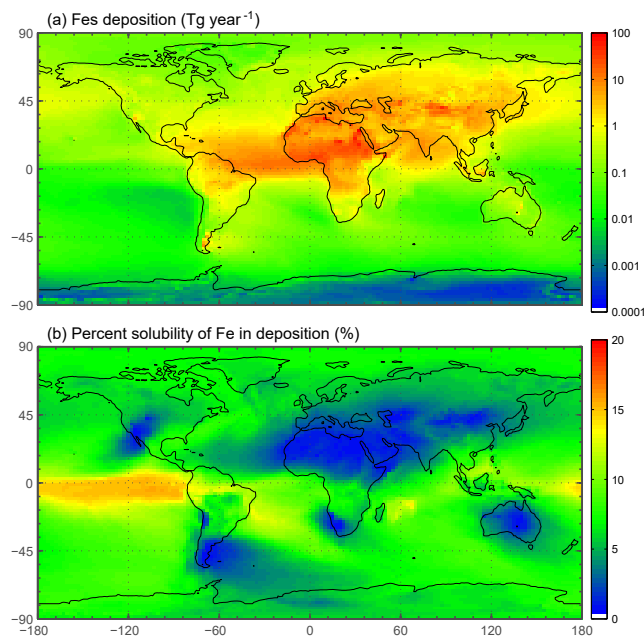
The spatial and zonal distributions of labile iron production lifetimes, defined as the difference between  $F_{\text{et}}$  and  $F_{\text{es}}$  divided by the total  $F_{\text{es}}$  production (Fig. 6), illustrate where and how dust and combustion iron is most efficiently processed. Shorter lifetimes reflect where most of the atmospheric processing occurs, which is in geographic areas low in calcite, high in oxalate and combustion aerosols, and in regions dominated by clouds and precipitation (e.g., equatorial regions). Iron dissolution is much slower near dust sources where acidic processing is hindered by the pH buffering of calcite in dust; additionally, dust source regions are characterized by arid surface conditions and low cloud coverage making the in-cloud oxalate processing insignificant. In spite of the production lifetimes, because the total iron from dust is 30 times larger than total combustion iron, the spatial distribution of labile iron deposition is dominated by dust iron (Fig. 7a). Again, however, the fractional iron solubility is inversely related to total and soluble iron deposition, a result consistent with theory and observations (e.g., Sholkovitz et al., 2012).

### 3.4 Comparison to sensitivity studies

Six sensitivity studies are conducted to assess the importance of the assumptions made for the reference case. The atmospheric burden; wet and dry deposition and emission of dust; and total iron in dust,  $F_{\text{es,med}}$ ,  $F_{\text{es,slow}}$ ,  $F_{\text{et,comb}}$  and  $F_{\text{es,comb}}$  are compared between the sensitivity simulations and the reference case (Table S2). Dust and  $F_{\text{et,comb}}$  loading and emission are identical for all cases. The combined wet and dry deposition of soluble iron is about 2.5 times higher for the reference case compared to SS1 and over 6 times greater compared to SS3. This suggests that a more complex mechanism than the simple scheme in SS3 is needed; additionally, the SS1 simulation strongly suggests the need for including the organic ligand enhancement in our iron dissolution scheme. SS5 and SS6 are identical to REF and SS2 with the exception of higher acidity prescribed when the concentration of sulfate exceeds calcite. The increased acidity corresponds to greater iron dissolution; while the RMSE of fractional iron solubility (Table 2) is similar for these studies, the MMO is considerably improved for fine-mode and total solubility (Table 3). Despite more closely matching the observational mean, a pH



**Figure 6.** Spatial distribution of annually averaged turnover time of insoluble iron (days) defined as the total insoluble iron from dust and combustion aerosols divided by the production of soluble iron from insoluble iron (a). Zonal distribution of annually averaged insoluble to soluble iron turnover (days) (b).



**Figure 7.** Spatial distribution of annually averaged soluble iron deposition from both dust and combustion in  $\text{Tg yr}^{-1}$  (a). Spatial distribution of annually averaged fractional iron solubility from dust and combustion (%) (b).

of 1 is typically considered unrealistic; however, more recent studies have identified conditions yielding very acidic atmospheric water, particularly in fine particle solutions (Guo et al., 2016; Weber et al., 2016). The largest differences in soluble iron deposition and %Fes between the reference case and the six sensitivity studies are for decreasing the complexity of the iron-processing mechanism (SS1, SS3) and for increasing the acidity (SS5, SS6).

Because oxalate formation in the atmosphere is complex, some iron mobilization studies that calculate oxalate concentrations use a sulfate proxy for several reasons (Johnson and Meskhidze, 2013). The atmospheric sulfate concentrations and sources of sulfate are better understood than OC and especially SOA concentrations, and they typically occur near combustion sources; a formula for the concentration of oxalate as a function of sulfate developed in Yu et al. (2005) is used for studies that want to include the impact of organic ligand enhancement (Johnson and Meskhidze, 2013). SS2 uses a similar proxy and we conclude that the method for parameterizing model concentrations of oxalate is not important for matching observational means in our model compared to other factors (Table 7). The spatial distribution for this analysis supports the above discussion (Fig. 8) and highlights the regional differences in Fes deposition particularly between the two different parameterizations for oxalate (Fig. 8b), which can account for up to a 30 % difference in soluble iron fluxes depending on which proxy is used (Table 6b). Despite these differences, it is reasonable to use either proxy for calculating oxalate; we chose to use the OC proxy since the spatial oxalate distributions generated from this more closely match distributions of explicitly simulated oxalate in Myriokefalitakis et al. (2011).

In order to assess the importance of deriving global iron emission maps from iron-containing mineral soil maps, the mineral spatial dependence on iron emission is removed for SS4 and each tracer is prescribed a global average fraction for total iron, soluble iron and calcite. These fractions are determined from the global average surface fluxes of each tracer from the reference case. The MMO for this case shows that SS4 underestimates fine-mode fractional iron solubility, matches this in the coarse mode, and underestimates the combined fine- and coarse-mode solubility with the observational mean. Additionally, the global average fractional iron solubility is marginally smaller (11 %, Table 7). Again, the differences in the global budgets between REF and SS4 are not large in absolute values, although for different basins it could change by up to 20 % (Table 6b).

#### 4 Results: preindustrial studies

Four preindustrial simulations are conducted using the iron-processing mechanism from the reference case. PI1 has the same dust and combustion sources as the current climate runs but is forced with preindustrial (1850) chemistry. PI2 in-

cludes the preindustrial chemistry as well as the preindustrial dust sources; PI3 includes preindustrial combustion emissions. The fourth simulation has the changes included in PI3 and is run with oxalate parameterized via the sulfate proxy from SS2.

Previous studies based on limited paleodata suggest that dust emissions in 1850 were significantly lower than for current climate (Mahowald et al., 2010; Mulitza et al., 2010). In addition, industrial combustion sources in 1850 are considerably lower than present-day emissions (Lamarque et al., 2010). Annually averaged global deposition of labile iron from both dust and combustion is 2 times higher for current climate (REF) compared with PI3 (Tables S2, S3), while labile iron deposition to all ocean basins and to HNLC basins is  $\sim 1.7$  and 1.5 times higher (Tables 5 and 6, ocean basin deposition for PI not shown) than preindustrial. The ratio of REF / PI3 for soluble iron deposition is shown in Fig. 9b where, over most of the globe, more soluble iron is deposited for current climate. Interestingly, in some regions, combustion iron from biomass burning is significant in PI3, particularly in South America. This increase actually results in higher percent labile iron deposition to the Antarctic Ocean basin during the preindustrial compared to current climate (Table 6b); the average contribution of combustion iron to total fractional iron solubility in the ocean basins below  $10^\circ$  S is 45 % for current climate and 55 % for preindustrial conditions.

The ratio of PI3 / PI4 has a similar spatial distribution to Fig. 8b although lower overall acidity and combustion in 1850 decreases the magnitude of the differences. However, if one considers the change in soluble iron between current and preindustrial simulations, a strong hemispheric gradient appears in the ratio between the use of  $\text{SO}_4^{2-}$  and OC as the proxy for oxalate because of the changes in these constituent precursors in the input data (Fig. 9c). The differences are a 20 % decrease and a 20 % increase in the Northern and Southern Hemisphere, respectively. Thus, the choice of  $\text{SO}_4$  or OC as the proxy for oxalate might not cause a statistically significant change when compared to observations, but it has implications for projected changes due to changes in precursor emissions.

#### 5 Discussion and comparison to previous studies

This study compares observations of soluble iron with an iron dissolution scheme that is simple enough to include in an Earth system model and includes chemical mechanisms thought to be important in atmospheric iron processing based on studies that incorporate coupled, complex chemical schemes (Meskhidze et al., 2005; Solmon et al., 2009; Johnson and Meskhidze, 2013; Ito and Xu, 2014; Myriokefalitakis et al., 2015; Ito, 2015). Currently, there is substantial uncertainty regarding the relative importance of how the various atmospheric processes responsible for iron dissolution

**Table 6.** (a) Annually averaged loading (Gg), deposition (Gg yr<sup>-1</sup>) and fractional iron solubility at deposition to global and regional oceans for the reference case. (b) Percent change for all cases relative to the reference case for global and regional fractional iron solubility at deposition to the ocean.

(a)	Fet <sub>load</sub>	Fes <sub>load</sub>	Fet <sub>dep</sub>	Fes <sub>dep</sub>	%Fes <sub>dep</sub>
Global ocean	201.22	7.21	17 937.93	585.57	3.26
North Atlantic	38.63	0.99	4846.37	99.87	2.06
North Pacific	12.71	0.56	900.25	44.32	4.92
N. central Atlantic	49.83	1.48	3639.33	107.86	2.96
N. central Pacific	5.10	0.29	280.01	18.17	6.49
N. Indian Ocean	57.11	1.21	4559.84	90.13	1.98
Eq. Atlantic	32.79	2.18	2600.55	183.69	7.06
Eq. Pacific	0.83	0.08	91.48	8.56	9.37
Eq. Indian Ocean	8.03	0.39	1092.71	41.41	3.79
South Atlantic	3.21	0.25	136.42	7.67	5.62
South Pacific	0.60	0.04	40.06	2.16	5.40
S. Indian Ocean	1.21	0.08	76.83	5.55	7.23
Antarctic	2.26	0.12	481.45	14.08	2.92

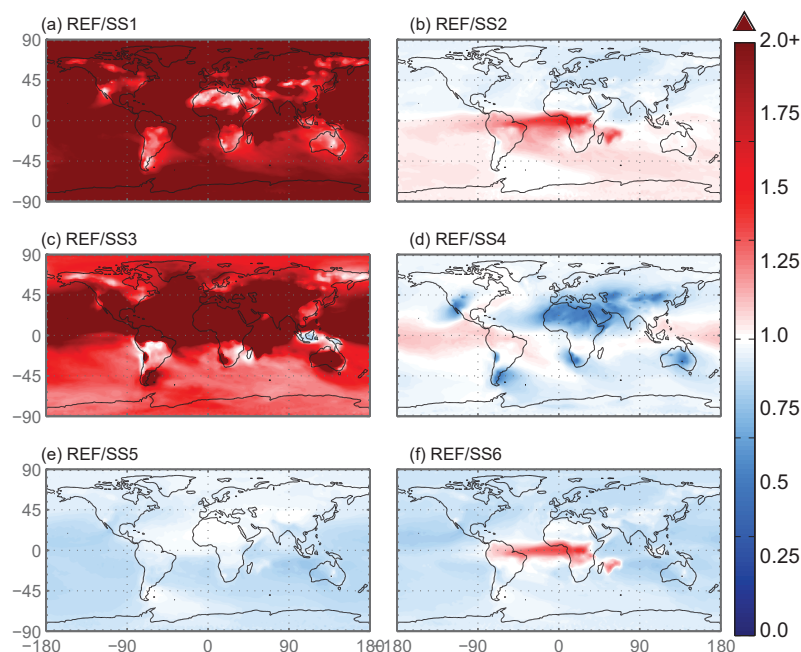
(b)	SS1	SS2	SS3	SS4	SS5	SS6	PI1	PI2	PI3	PI4
Global	-6.2 %	-3.7 %	-73.7 %	-13.6 %	7.0 %	3.3 %	-14.3 %	-12.0 %	-15.2 %	-16.7 %
North Atlantic	-49.8 %	11.5 %	-79.0 %	-12.6 %	4.4 %	15.8 %	-6.5 %	-4.6 %	-6.9 %	-2.4 %
North Pacific	-62.8 %	9.4 %	-49.6 %	-9.5 %	11.5 %	20.8 %	-13.4 %	-15.9 %	-19.7 %	-20.4 %
N. central Atlantic	-63.8 %	3.5 %	-75.7 %	-16.2 %	4.0 %	7.5 %	-7.2 %	-5.1 %	-5.7 %	-3.5 %
N. central Pacific	-63.8 %	6.8 %	-59.8 %	-12.2 %	20.6 %	27.3 %	-13.5 %	-20.4 %	-22.7 %	-20.6 %
N. Indian Ocean	-49.9 %	9.8 %	-77.9 %	-5.4 %	7.5 %	17.2 %	-9.8 %	-8.4 %	-11.0 %	-10.4 %
Eq. Atlantic	-80.8 %	-28.5 %	-76.6 %	-7.6 %	4.0 %	-24.4 %	-26.1 %	-23.6 %	-25.5 %	-35.0 %
Eq. Pacific	-68.7 %	-7.9 %	-54.2 %	-8.6 %	18.3 %	10.7 %	-14.1 %	-11.9 %	-15.1 %	-16.1 %
Eq. Indian Ocean	-58.2 %	7.2 %	-68.4 %	-14.6 %	13.5 %	20.7 %	-12.9 %	-11.0 %	-18.3 %	-18.2 %
South Atlantic	-56.1 %	-19.4 %	-49.1 %	-10.9 %	16.8 %	-2.2 %	-20.0 %	-24.1 %	-29.1 %	-32.6 %
South Pacific	-42.4 %	-5.4 %	-24.6 %	0.8 %	23.6 %	18.5 %	-9.6 %	-3.5 %	-6.1 %	-7.1 %
S. Indian Ocean	-52.4 %	-12.7 %	-36.7 %	-3.8 %	20.3 %	7.8 %	-16.3 %	-16.1 %	-15.3 %	-18.6 %
Antarctic	-46.4 %	-6.0 %	-42.5 %	-0.6 %	15.9 %	10.1 %	-9.1 %	3.1 %	3.3 %	2.7 %

**Table 7.** Percent change for the MMO metric compared to the reference case for labile, total and percent labile iron in the fine mode (< 1 μm), the coarse mode (> 1 and ≤ 10 μm), and for the combined fine and coarse modes (0.1–10.0 μm). The lower section of the table compares the percent difference for the average production lifetime of Fes (days) labeled here as τ and the average fractional iron solubility at deposition to global ocean basins.

MEAN (mod/obs)	REF	SS1	SS2	SS3	SS4	SS5	SS6
Fes <sub>fine</sub>	0.70	-32.3 %	-1.4 %	-87.1 %	-66.1 %	4.5 %	3.1 %
Fes <sub>coarse</sub>	6.80	-57.5 %	1.5 %	-76.8 %	-21.1 %	4.2 %	5.8 %
Fes <sub>total</sub>	2.61	-53.6 %	1.7 %	-74.6 %	-26.3 %	5.1 %	6.7 %
Fet <sub>fine</sub>	0.33	0.0 %	0.0 %	-30.8 %	-36.1 %	0.0 %	0.0 %
Fet <sub>coarse</sub>	4.09	0.0 %	0.0 %	-9.0 %	-16.4 %	0.0 %	0.0 %
Fet <sub>total</sub>	1.32	0.0 %	0.0 %	-26.6 %	-16.2 %	0.0 %	0.0 %
%Fes <sub>fine</sub>	0.85	-47.9 %	-4.4 %	-61.2 %	-25.5 %	15.1 %	10.8 %
%Fes <sub>coarse</sub>	1.14	-68.4 %	-4.2 %	-66.4 %	-7.1 %	16.3 %	12.1 %
%Fes <sub>total</sub>	0.86	-62.9 %	-1.4 %	-53.4 %	-7.2 %	18.4 %	17.2 %
τ	1579	244.6 %	-0.6 %	n/a	-5.7 %	-46.7 %	-47.2 %
mean %Fes <sub>dep</sub>	3.26	-63.2 %	-3.7 %	-73.7 %	-11.0 %	7.0 %	3.3 %

interact with each other, the significance of and processing of

combustion iron, and the bioavailability of atmospherically processed iron following deposition to the ocean.

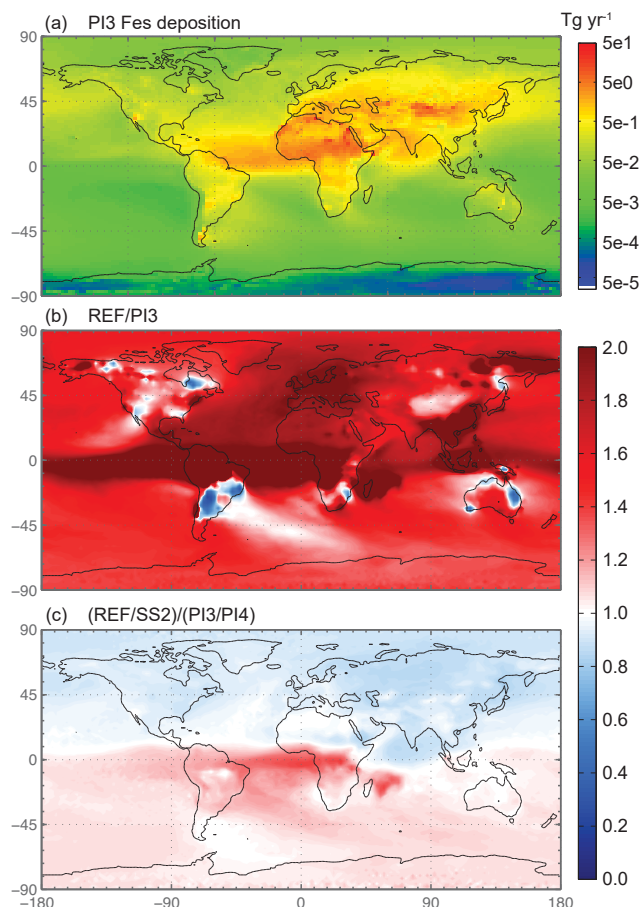


**Figure 8.** The spatial distribution of the  $F_{es}$  deposition ratio of the reference case over the six sensitivity studies. SS1 corresponds to the case with proton-promoted iron dissolution and no processing via organic ligand dissolution enhancement. The processing mechanism for SS2 is identical to the reference case; however, it uses a sulfate proxy for calculating model oxalate concentrations instead of the OC proxy used in the reference case. SS3 corresponds to a simplified dissolution mechanism defined in Hand et al. (2004); a decay rate is applied when iron comes into contact with a cloud. The SS4 simulation has the same processing mechanism as the reference case; however, the spatial dependence of total and soluble iron on mineralogy at emission is replaced with the average values for these variables from the reference case. SS5 and SS6 are identical to the reference case and SS2, respectively, with the exception of prescribing the pH at 1 when sulfate concentrations exceed calcite concentrations. White indicates no change, red indicates that the deposition in the reference case is higher than the sensitivity study and blue indicates higher deposition compared to the reference case.

A comparison of our results with the results obtained from previous modeling studies enables some determination of the robustness of the iron dissolution scheme used in this study. SS1 is compared to a similar study (Ito and Xu, 2014) since this study did not include an oxalate scheme. The deposition of total and soluble iron from dust and combustion sources is calculated for ocean regions in the western and eastern North Pacific in Table S2e and compared to Table 6 in Ito and Xu (2014). Because we used similar definitions for  $F_{et}$  and a similar dissolution scheme for acidic processing of iron, our total and soluble iron reasonably matches their data. In both the western and eastern North Pacific basins, Ito and Xu (2014) report dust iron solubility of around 2%; we calculate dust iron solubility of around 1.4% and 1.6% for the two basins, respectively. This disparity may be a result of not including separate tracers and dissolution rates for  $Fe_{RR}$  along with some simplifications we made in the dissolution rate (i.e., not accounting for the deviation from equilibrium for  $Fe_{t} \rightarrow Fe_{s}$ ). The sources of combustion in this study are different and we did not include a combustion-specific processing scheme. For lack of a better understanding of combustion iron dissolution, combustion iron in this study is mobilized with the rate used for  $F_{es,med}$ .

Johnson and Meskhidze (2013) include an oxalate-processing scheme based on oxalate-promoted dissolution data reported in Paris et al. (2011). It is difficult to compare our results since we interpreted the Paris et al. (2011) data differently to calculate our coefficients for the oxalate dissolution rates for illite and hematite. We predict higher dissolved iron deposition from dust to the global ocean basins compared to their prediction (0.54 versus 0.21  $Tg\ yr^{-1}$ ) and for the range in  $F_{es}$  deposition reported here (0.21–0.41  $Tg\ yr^{-1}$ ) from Luo et al. (2008), Luo and Gao (2010), and Okin et al. (2011). Johnson and Meskhidze (2013) report a 75% increase in  $F_{es}$  deposition when the oxalate mechanism is included, which is similar to our prediction of a 63% increase (Table 6b).

A recent study that included both dust and combustion iron along with acidic processing, photochemical reduction and organic ligand processing (Myriokefalitakis et al., 2015) reports  $F_{et}$  emissions from mineral dust and combustion at  $\sim 35$  and  $2\ Tg\ yr^{-1}$ , respectively. In fact, the method by which this study determined the iron content at emission is nearly identical to the method used in our study; we calculate  $\sim 57$  and  $2\ Tg\ yr^{-1}$  of total iron, which is very similar to their emissions if we account for the 38% difference in



**Figure 9.** Spatial distribution of soluble iron deposition for the preindustrial simulation with the year 1850 chemical emissions, dust source strengths and combustion emissions (PI3) ( $\text{Tg yr}^{-1}$ ) in panel (a). Spatial distribution of the Fes deposition ratio of the reference case over PI3 (b), and the difference between the sulfate and OC proxies for current over preindustrial (c).

dust emission between the two studies. However, the global annual flux of Fet from dust and combustion in our study is nearly 3 times higher than the  $0.496 \text{ Tg yr}^{-1}$  reported here. A significant difference between our mechanism involves the oxalate processing; we assume that moderately soluble iron (iron from illite and smectite) undergoes organic ligand processing with a rate determined from Paris et al. (2011) for illite and weakly soluble iron (iron from kaolinite, feldspar and hematite) is processed with a rate derived from the hematite data. This study only processes illite and hematite and neglects the iron from smectite, feldspar and kaolinite, the first of which has significant iron concentrations as reported in Journet et al. (2008). In addition, because we used a simple parameterization for pH, we do not simulate the decrease in the oxalate mechanism at low pH. Regardless, our ability to match observations, despite the simplified parameterizations we employed compared with the full chemistry scheme used

here, is at least as good if not better than the metric values reported in the Supplement.

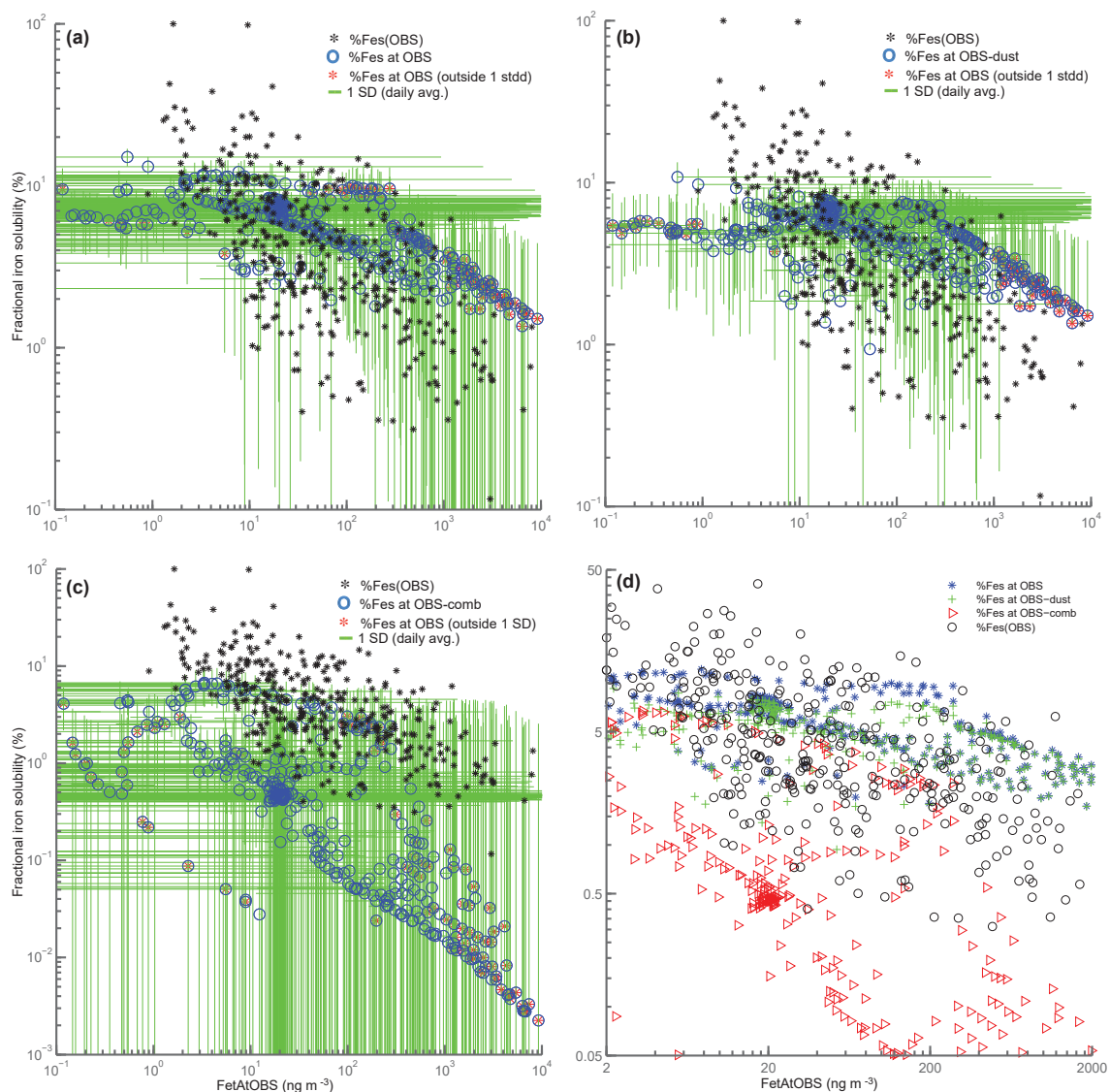
Ito (2015) includes an oxalate-processing mechanism for the dissolution of iron in combustion aerosols. The global annual deposition for labile iron reported is  $1.07 \text{ Tg yr}^{-1}$ , which is closer to the  $1.4 \text{ Tg yr}^{-1}$  estimated in this study.

Theory and observations of iron processing show an inverse trend in total and soluble iron concentrations with fractional iron solubility (Sholkovitz et al., 2012). The results from our work suggest that this relationship cannot be uniquely constrained by considering either dust or combustion sources of iron alone. Figure 10 shows the total fractional iron solubility versus total iron for dust iron and combustion iron. In order to illustrate the difficulty in determining which process is responsible for the inverse trend, for each observation, we define a box spanning the standard deviation of modeled fractional iron solubility and of modeled total iron. When the observation lies inside or outside of this box, we can calculate the percentage of model points that are within the range of the observations. For dust processing only, for combustion only and for the total (dust + combustion), 75.4 %, 73.8 % and 73.3 % of model values are within the observational range, respectively. If only combustion sources were included and assumed to be more soluble, the modeled values for soluble iron would all be shifted upwards in Fig. 10 and could match available observations quite well.

## 6 Conclusion

A medium-complexity soluble-iron-processing mechanism is developed for use in an Earth system model and includes a proton-promoted aerosol-water-processing scheme along with an in-cloud organic-ligand-promoted dissolution scheme. We define a semi-quantitative metric as the model mean at points with observations divided by the observational mean (MMO); fractional iron solubility MMO is 0.86, indicating that, while the model is not capturing all of the observational variability, it is in reasonable agreement with the observational mean. Several sensitivity studies are performed to ascertain the degree of complexity needed to match observations. A simple first-order decay rate from Hand et al. (2004) is too slow compared to observations than our intermediate-complexity mechanism. Our results indicate that the acidic processing alone is insufficient in matching observations and that the additional ligand-promoted mechanism was required; the mechanism employed is reasonably able to capture some but not all of the observational features of soluble iron and iron solubility, similar to the more complicated mechanisms employed in previous studies (Meskhidze et al., 2005; Johnson and Meskhidze, 2013; Ito and Xu, 2014; Myriokefalitakis et al., 2015; Ito, 2015). The in-cloud organic-ligand-processing mechanism is likely





**Figure 10.** Scatterplots of total iron vs. fractional iron solubility. For panels (a)–(c), black points correspond to observations, blue circles correspond to annually averaged model values at grid boxes where we have observational data. Red stars indicate model values that fall outside the range (predicted from the average of 1 standard deviation from daily averaged values for both total iron and fractional iron solubility) in relation to observed values. Panel (a) corresponds to fractional iron solubility from both dust and combustion, panel (b) is for fractional iron solubility from dust only and panel (c) is for combustion iron only. Panel (d) corresponds to the zoomed-in version of Fig. 1 in Sholkovitz et al. (2012) shown logarithmically. FetAtOBS: the model value for Fet at the geographic location where Fet was observed.

to be responsible for the majority of the atmospheric processing (> 60 %).

An additional objective was characterizing the relative importance of the contribution of iron from combustion aerosols versus iron from dust to different ocean basins. Upon deposition to global oceans, global mean combustion iron solubility to total fractional iron solubility is 8.2 %; however, the contribution of fractional iron solubility from combustion sources to ocean basins below 15° S is approximately 50 %. We estimate approximately a doubling of soluble iron deposition to the oceans in the current climate rel-

ative to the preindustrial, due to increased dust, combustion iron and acidifying compounds, and a  $\sim 1.7$ -fold increase in the iron-limited regions of the ocean (Tables 5–7). Even in the preindustrial, when industrial sources of iron are much lower, combustion sources of iron are likely to be important in some regions.

Building the framework to model iron dissolution in a full-complexity Earth system model was the main goal of this study; however, more observations are needed in remote ocean regions to evaluate model performance. Additionally, more laboratory and field experiments are necessary to better



constrain the importance of combustion iron and atmospheric processing of mineral aerosols with both inorganic and organic acids. The sensitivity studies indicate that including an organic-ligand-processing mechanism is the most important parameter in order to match observations. Further investigation into atmospheric aerosol solution acidity is necessary in order to distinguish whether the sensitivity studies with higher acidity are better representations of soluble iron processing in the atmosphere.

*Data availability.* The observational data and the model output for the base case and the PI simulations are available at <http://www.geo.cornell.edu/eas/PeoplePlaces/Faculty/mahowald/dust/scanzaetal2018> (Mahowald, 2018).

**The Supplement related to this article is available online at <https://doi.org/10.5194/acp-18-14175-2018-supplement>.**

*Author contributions.* RAS and NMM designed the experiments; RAS performed model simulations; and RAS, NMM, and DSH analyzed results. AB and CB provided observations, and all authors revised the paper.

*Competing interests.* The authors declare that they have no conflict of interest.

*Special issue statement.* This article is part of the special issue “Anthropogenic dust and its climate impact”. It is not associated with a conference.

*Acknowledgements.* We would like to acknowledge the support of DOE DE-SC0006735 and NSF 1049033. Carlos Pérez García-Pando acknowledges long-term support from the AXA Research Fund through the AXA Chair on Sand and Dust Storms, as well as the support received through the Ramón y Cajal program (grant RYC-2015-18690) of the Spanish Ministry of Economy and Competitiveness.

Edited by: Jianping Huang

Reviewed by: two anonymous referees

## References

Albani, S., Mahowald, N., Perry, A., Scanza, R., Zender, C., Heavens, N., Maggi, V., Kok, J., and Otto-Bliesner, B.: Improved dust representation in the Community Atmosphere Model, *J. Adv. Model. Earth Sy.*, 6, 541–570, 2014.

Baker, A. and Croot, P.: Atmospheric and marine controls on aerosol iron solubility in seawater, *Mar. Chem.*, 120, 4–13, 2010.

Baker, A. and Jickells, T.: Mineral particle size as a control on aerosol iron solubility, *Geophys. Res. Lett.*, 33, L17608, <https://doi.org/10.1029/2006GL026557>, 2006.

Baker, A., French, M., and Linge, K.: Trends in aerosol nutrient solubility along a west–east transect of the Saharan dust plume, *Geophys. Res. Lett.*, 33, L07805, <https://doi.org/10.1029/2005GL024764>, 2006a.

Baker, A., Jickells, T., Witt, M., and Linge, K.: Trends in the solubility of iron, aluminium, manganese and phosphorus in aerosol collected over the Atlantic Ocean, *Mar. Chem.*, 98, 43–58, 2006b.

Baker, A. R., Laskina, O., and Grassian, V. H.: Processing and Ageing in the Atmosphere, in: *Mineral Dust*, Springer, 75–92, 2014.

Baker, A. R., Thomas, M., Bange, H. W., and Plasencia Sánchez, E.: Soluble trace metals in aerosols over the tropical south-east Pacific offshore of Peru, *Biogeosciences*, 13, 817–825, <https://doi.org/10.5194/bg-13-817-2016>, 2016.

Barbeau, K., Moffett, J. W., Caron, D. A., Croot, P. L., and Erdner, D. L.: Role of protozoan grazing in relieving iron limitation of phytoplankton, 1996.

Batjes, N.: A world dataset of derived soil properties by FAO–UNESCO soil unit for global modelling, *Soil Use Manage.*, 13, 9–16, 1997.

Böke, H., Göktürk, E. H., Caner-Saltık, E. N., and Demirci, Ş.: Effect of airborne particle on SO<sub>2</sub>–calcite reaction, *Appl. Surf. Sci.*, 140, 70–82, 1999.

Boyd, P. W., Watson, A. J., Law, C. S., Abraham, E. R., Trull, T., Murdoch, R., Bakker, D. C., Bowie, A. R., Buesseler, K., and Chang, H.: A mesoscale phytoplankton bloom in the polar Southern Ocean stimulated by iron fertilization, *Nature*, 407, 695–702, 2000.

Broecker, W. S., Takahashi, T., Simpson, H., and Peng, T.-H.: Fate of fossil fuel carbon dioxide and the global carbon budget, *Science*, 206, 409–418, 1979.

Chen, Y. and Siefert, R. L.: Seasonal and spatial distributions and dry deposition fluxes of atmospheric total and labile iron over the tropical and subtropical North Atlantic Ocean, *J. Geophys. Res.-Atmos.*, 109, D09305, <https://doi.org/10.1029/2003JD003958>, 2004.

Chuang, P., Duvall, R., Shafer, M., and Schauer, J.: The origin of water soluble particulate iron in the Asian atmospheric outflow, *Geophys. Res. Lett.*, 32, L07813, <https://doi.org/10.1029/2004GL021946>, 2005.

Claquin, T., Schulz, M., and Balkanski, Y.: Modeling the mineralogy of atmospheric dust sources, *J. Geophys. Res.-Atmos.*, 104, 22243–22256, 1999.

Cornell, R. and Schindler, P.: Photochemical dissolution of goethite in acid/oxalate solution, *Clay. Clay Miner.*, 35, 347–352, 1987.

Crutzen, P. J. and Zimmermann, P. H.: The changing photochemistry of the troposphere, *Tellus B*, 43, 136–151, 1991.

d’Almeida, G. A.: On the variability of desert aerosol radiative characteristics, *J. Geophys. Res.-Atmos.*, 92, 3017–3026, 1987.

De Baar, H. J., De Jong, J. T., Bakker, D. C., Löscher, B. M., Veth, C., Bathmann, U., and Smetacek, V.: Importance of iron for plankton blooms and carbon dioxide drawdown in the Southern Ocean, *Nature*, 373, 412–415, 1995.

Desboeufs, K., Losno, R., and Colin, J.-L.: Factors influencing aerosol solubility during cloud processes, *Atmos. Environ.*, 35, 3529–3537, 2001.

- Duce, R. A. and Tindale, N. W.: Atmospheric transport of iron and its deposition in the ocean, *Limnol. Oceanogr.*, 36, 1715–1726, 1991.
- Fung, I. Y., Meyn, S. K., Tegen, I., Doney, S. C., John, J. G., and Bishop, J. K.: Iron supply and demand in the upper ocean, *Global Biogeochem. Cy.*, 14, 281–295, 2000.
- Gent, P. R., Danabasoglu, G., Donner, L. J., Holland, M. M., Hunke, E. C., Jayne, S. R., Lawrence, D. M., Neale, R. B., Rasch, P. J., and Vertenstein, M.: The community climate system model version 4, *J. Climate*, 24, 4973–4991, 2011.
- Gregg, W. W., Conkright, M. E., Ginoux, P., O'Reilly, J. E., and Casey, N. W.: Ocean primary production and climate: Global decadal changes, *Geophys. Res. Lett.*, 30, 1809, <https://doi.org/10.1029/2003GL016889>, 2003.
- Guieu, C., Bonnet, S., Wagener, T., and Loÿe-Pilot, M. D.: Biomass burning as a source of dissolved iron to the open ocean?, *Geophys. Res. Lett.*, 32, L19608, <https://doi.org/10.1029/2005GL022962>, 2005.
- Guo, H., Sullivan, A. P., Campuzano-Jost, P., Schroder, J. C., Lopez-Hilfiker, F. D., Dibb, J. E., Jimenez, J. L., Thornton, J. A., Brown, S. S., and Nenes, A.: Fine particle pH and the partitioning of nitric acid during winter in the northeastern United States, *J. Geophys. Res.-Atmos.*, 121, 10355–10376, <https://doi.org/10.1002/2016JD025311>, 2016.
- Hand, J., Mahowald, N., Chen, Y., Siefert, R., Luo, C., Subramaniam, A., and Fung, I.: Estimates of atmospheric-processed soluble iron from observations and a global mineral aerosol model: Biogeochemical implications, *J. Geophys. Res.-Atmos.*, 109, D17205, <https://doi.org/10.1029/2004JD004574>, 2004.
- Heimburger, A., Losno, R., and Triquet, S.: Solubility of iron and other trace elements in rainwater collected on the Kerguelen Islands (South Indian Ocean), *Biogeosciences*, 10, 6617–6628, <https://doi.org/10.5194/bg-10-6617-2013>, 2013.
- Huneus, N., Schulz, M., Balkanski, Y., Griesfeller, J., Kinne, S., Prospero, J., Bauer, S., Boucher, O., Chin, M., and Dentener, F.: Global dust model intercomparison in AeroCom phase I, *Atmos. Chem. Physics Discuss.*, 10, 23781–23864, <https://doi.org/10.5194/acpd-10-23781-2010>, 2010.
- Huneus, N., Schulz, M., Balkanski, Y., Griesfeller, J., Prospero, J., Kinne, S., Bauer, S., Boucher, O., Chin, M., Dentener, F., Diehl, T., Easter, R., Fillmore, D., Ghan, S., Ginoux, P., Grini, A., Horowitz, L., Koch, D., Krol, M. C., Landing, W., Liu, X., Mahowald, N., Miller, R., Morcrette, J.-J., Myhre, G., Penner, J., Perlwitz, J., Stier, P., Takemura, T., and Zender, C. S.: Global dust model intercomparison in AeroCom phase I, *Atmos. Chem. Phys.*, 11, 7781–7816, <https://doi.org/10.5194/acp-11-7781-2011>, 2011.
- Hurrell, J. W., Holland, M. M., Gent, P. R., Ghan, S., Kay, J. E., Kushner, P., Lamarque, J.-F., Large, W. G., Lawrence, D., and Lindsay, K.: The community earth system model: a framework for collaborative research, *B. Am. Meteorol. Soc.*, 94, 1339–1360, 2013.
- Ito, A.: Atmospheric processing of combustion aerosols as a source of bioavailable iron, *Environ. Sci. Tech. Let.*, 2, 70–75, 2015.
- Ito, A. and Shi, Z.: Delivery of anthropogenic bioavailable iron from mineral dust and combustion aerosols to the ocean, *Atmos. Chem. Phys.*, 16, 85–99, <https://doi.org/10.5194/acp-16-85-2016>, 2016.
- Ito, A. and Xu, L.: Response of acid mobilization of iron-containing mineral dust to improvement of air quality projected in the future, *Atmos. Chem. Phys.*, 14, 3441–3459, <https://doi.org/10.5194/acp-14-3441-2014>, 2014.
- Jickells, T., An, Z., Andersen, K. K., Baker, A., Bergametti, G., Brooks, N., Cao, J., Boyd, P., Duce, R., and Hunter, K.: Global iron connections between desert dust, ocean biogeochemistry, and climate, *Science*, 308, 67–71, 2005.
- Jickells, T. D. and Spokes, L. J.: Atmospheric iron inputs to the oceans, *IUPAC series on analytical and physical chemistry of environmental systems*, 7, 85–122, 2001.
- Johnson, K.: Iron supply and demand in the upper ocean: Is extraterrestrial dust a significant source of bioavailable iron?, *Global Biogeochem. Cy.*, 15, 61–63, 2001.
- Johnson, M. S. and Meskhidze, N.: Atmospheric dissolved iron deposition to the global oceans: effects of oxalate-promoted Fe dissolution, photochemical redox cycling, and dust mineralogy, *Geosci. Model Dev.*, 6, 1137–1155, <https://doi.org/10.5194/gmd-6-1137-2013>, 2013.
- Journet, E., Desboeufs, K. V., Caquineau, S., and Colin, J. L.: Mineralogy as a critical factor of dust iron solubility, *Geophys. Res. Lett.*, 35, L07805, <https://doi.org/10.1029/2007GL031589>, 2008.
- Kok, J. F.: A scaling theory for the size distribution of emitted dust aerosols suggests climate models underestimate the size of the global dust cycle, *P. Natl. Acad. Sci. USA*, 108, 1016–1021, 2011.
- Lafon, S., Rajot, J.-L., Alfaro, S. C., and Gaudichet, A.: Quantification of iron oxides in desert aerosol, *Atmos. Environ.*, 38, 1211–1218, 2004.
- Lamarque, J.-F., Bond, T. C., Eyring, V., Granier, C., Heil, A., Klimont, Z., Lee, D., Liousse, C., Mieville, A., Owen, B., Schultz, M. G., Shindell, D., Smith, S. J., Stehfest, E., Van Aardenne, J., Cooper, O. R., Kainuma, M., Mahowald, N., McConnell, J. R., Naik, V., Riahi, K., and van Vuuren, D. P.: Historical (1850–2000) gridded anthropogenic and biomass burning emissions of reactive gases and aerosols: methodology and application, *Atmos. Chem. Phys.*, 10, 7017–7039, <https://doi.org/10.5194/acp-10-7017-2010>, 2010.
- Lamarque, J.-F., Emmons, L. K., Hess, P. G., Kinnison, D. E., Tilmes, S., Vitt, F., Heald, C. L., Holland, E. A., Lauritzen, P. H., Neu, J., Orlando, J. J., Rasch, P. J., and Tyndall, G. K.: CAM-chem: description and evaluation of interactive atmospheric chemistry in the Community Earth System Model, *Geosci. Model Dev.*, 5, 369–411, <https://doi.org/10.5194/gmd-5-369-2012>, 2012.
- Lancaster, N. and Baas, A.: Influence of vegetation cover on sand transport by wind: field studies at Owens Lake, California, *Earth Surf. Proc. Land.*, 23, 69–82, 1998.
- Lelieveld, J., Crutzen, P. J., and Dentener, F. J.: Changing concentration, lifetime and climate forcing of atmospheric methane, *Tellus B*, 50, 128–150, 1998.
- Li, W., Xu, L., Liu, X., Zhang, J., Lin, Y., Yao, X., Gao, H., Zhang, D., Chen, J., and Wang, W.: Air pollution–aerosol interactions produce more bioavailable iron for ocean ecosystems, *Sci. Adv.*, 3, e1601749, <https://doi.org/10.1126/sciadv.1601749>, 2017.
- Luo, C. and Gao, Y.: Aeolian iron mobilisation by dust–acid interactions and their implications for soluble iron deposition to the ocean: a test involving potential anthropogenic organic acidic species, *Environ. Chem.*, 7, 153–161, 2010.

- Luo, C., Mahowald, N., Bond, T., Chuang, P., Artaxo, P., Siefert, R., Chen, Y., and Schauer, J.: Combustion iron distribution and deposition, *Global Biogeochem. Cy.*, 22, GB1012, <https://doi.org/10.1029/2007GB002964>, 2008.
- Mahowald, N. M.: Observation data and model output, available at: <http://www.geo.cornell.edu/eas/PeoplePlaces/Faculty/mahowald/dust/scanzaetal2018>, last access: 3 October 2018.
- Mahowald, N., Hamilton, D., Mackey, K., Moore, J., Baker, A., Scanza, R., and Zhang, Y.: Aerosol trace metal leaching and impacts on marine microorganisms, *Nat. Commun.*, 9, 2614, <https://doi.org/10.1038/s41467-018-04970-7>, 2018.
- Mahowald, N. M., Baker, A. R., Bergametti, G., Brooks, N., Duce, R. A., Jickells, T. D., Kubilay, N., Prospero, J. M., and Tegen, I.: Atmospheric global dust cycle and iron inputs to the ocean, *Global Biogeochem. Cy.*, 19, GB4025, <https://doi.org/10.1029/2004GB002402>, 2005.
- Mahowald, N. M., Muhs, D. R., Levis, S., Rasch, P. J., Yoshioka, M., Zender, C. S., and Luo, C.: Change in atmospheric mineral aerosols in response to climate: Last glacial period, preindustrial, modern, and doubled carbon dioxide climates, *J. Geophys. Res.-Atmos.*, 111, D10202, <https://doi.org/10.1029/2005JD006653>, 2006.
- Mahowald, N. M., Engelstaedter, S., Luo, C., Sealy, A., Artaxo, P., Benitez-Nelson, C., Bonnet, S., Chen, Y., Chuang, P. Y., and Cohen, D. D.: Atmospheric iron deposition: Global distribution, variability, and human perturbations\*, *Annu. Rev. Mar. Sci.*, 1, 245–278, 2009.
- Mahowald, N. M., Kloster, S., Engelstaedter, S., Moore, J. K., Mukhopadhyay, S., McConnell, J. R., Albani, S., Doney, S. C., Bhattacharya, A., Curran, M. A. J., Flanner, M. G., Hoffman, F. M., Lawrence, D. M., Lindsay, K., Mayewski, P. A., Neff, J., Rothenberg, D., Thomas, E., Thornton, P. E., and Zender, C. S.: Observed 20th century desert dust variability: impact on climate and biogeochemistry, *Atmos. Chem. Phys.*, 10, 10875–10893, <https://doi.org/10.5194/acp-10-10875-2010>, 2010.
- Martin, J. H.: Glacial-interglacial CO<sub>2</sub> change: The iron hypothesis, *Paleoceanography*, 5, 1–13, 1990.
- Martin, J. H. and Fitzwater, S.: Iron deficiency limits phytoplankton growth in the north-east Pacific subarctic, *Nature*, 331, 947–975, 1988.
- Meskhidze, N., Chameides, W., Nenes, A., and Chen, G.: Iron mobilization in mineral dust: can anthropogenic SO<sub>2</sub> emissions affect ocean productivity?, *Geophys. Res. Lett.*, 30, 2085, <https://doi.org/10.1029/2003GL018035>, 2003.
- Meskhidze, N., Chameides, W., and Nenes, A.: Dust and pollution: a recipe for enhanced ocean fertilization?, *J. Geophys. Res.-Atmos.*, 110, D03301, <https://doi.org/10.1029/2004JD005082>, 2005.
- Mulitza, S., Heslop, D., Pittauerova, D., Fischer, H. W., Meyer, I., Stuut, J.-B., Zabel, M., Mollenhauer, G., Collins, J. A., and Kuhnt, H.: Increase in African dust flux at the onset of commercial agriculture in the Sahel region, *Nature*, 466, 226–228, 2010.
- Myriokefalitakis, S., Tsigaridis, K., Mihalopoulos, N., Sciare, J., Nenes, A., Kawamura, K., Segers, A., and Kanakidou, M.: In-cloud oxalate formation in the global troposphere: a 3-D modeling study, *Atmos. Chem. Phys.*, 11, 5761–5782, <https://doi.org/10.5194/acp-11-5761-2011>, 2011.
- Myriokefalitakis, S., Daskalakis, N., Mihalopoulos, N., Baker, A. R., Nenes, A., and Kanakidou, M.: Changes in dissolved iron deposition to the oceans driven by human activity: a 3-D global modelling study, *Biogeosciences*, 12, 3973–3992, <https://doi.org/10.5194/bg-12-3973-2015>, 2015.
- Neale, R. B., Richter, J., Park, S., Lauritzen, P. H., Vavrus, S. J., Rasch, P. J., and Zhang, M.: The mean climate of the Community Atmosphere Model (CAM4) in forced SST and fully coupled experiments, *J. Climate*, 26, 5150–5168, 2013.
- Okin, G. S.: A new model of wind erosion in the presence of vegetation, *J. Geophys. Res.-Earth*, 113, F02S10, <https://doi.org/10.1029/2007JF000758>, 2008.
- Okin, G. S., Baker, A. R., Tegen, I., Mahowald, N. M., Dentener, F. J., Duce, R. A., Galloway, J. N., Hunter, K., Kanakidou, M., and Kubilay, N.: Impacts of atmospheric nutrient deposition on marine productivity: Roles of nitrogen, phosphorus, and iron, *Global Biogeochem. Cy.*, 25, GB2022, <https://doi.org/10.1029/2010GB003858>, 2011.
- Paris, R., Desboeufs, K., and Journet, E.: Variability of dust iron solubility in atmospheric waters: Investigation of the role of oxalate organic complexation, *Atmos. Environ.*, 45, 6510–6517, 2011.
- Pérez García-Pando, C., Miller, R. L., Perlwitz, J. P., Rodríguez, S., and Prospero, J. M.: Predicting the mineral composition of dust aerosols: Insights from elemental composition measured at the Izaña Observatory, *Geophys. Res. Lett.*, 43, 10520–10529, <https://doi.org/10.1002/2016GL069873>, 2016.
- Perlwitz, J. P., Pérez García-Pando, C., and Miller, R. L.: Predicting the mineral composition of dust aerosols – Part 1: Representing key processes, *Atmos. Chem. Phys.*, 15, 11593–11627, <https://doi.org/10.5194/acp-15-11593-2015>, 2015a.
- Perlwitz, J. P., Pérez García-Pando, C., and Miller, R. L.: Predicting the mineral composition of dust aerosols – Part 2: Model evaluation and identification of key processes with observations, *Atmos. Chem. Phys.*, 15, 11629–11652, <https://doi.org/10.5194/acp-15-11629-2015>, 2015b.
- Rasch, P. and Kristjánsson, J.: A comparison of the CCM3 model climate using diagnosed and predicted condensate parameterizations, *J. Climate*, 11, 1587–1614, 1998.
- Rasch, P., Feichter, J., Law, K., Mahowald, N., Penner, J., Benkovitz, C., Genthon, C., Giannakopoulos, C., Kasibhatla, P., and Koch, D.: A comparison of scavenging and deposition processes in global models: results from the WCRP Cambridge Workshop of 1995, *Tellus B*, 52, 1025–1056, 2000.
- Saydam, A. and Senyuva, H.: Deserts: Can they be the potential suppliers of bioavailable iron?, *Geophys. Res. Lett.*, 29, <https://doi.org/10.1029/2001GL013562>, 2002.
- Scanza, R. A., Mahowald, N., Ghan, S., Zender, C. S., Kok, J. F., Liu, X., Zhang, Y., and Albani, S.: Modeling dust as component minerals in the Community Atmosphere Model: development of framework and impact on radiative forcing, *Atmos. Chem. Phys.*, 15, 537–561, <https://doi.org/10.5194/acp-15-537-2015>, 2015.
- Schulz, M., Balkanski, Y. J., Guelle, W., and Dulac, F.: Role of aerosol size distribution and source location in a three-dimensional simulation of a Saharan dust episode tested against satellite-derived optical thickness, *J. Geophys. Res.-Atmos.*, 103, 10579–10592, 1998.
- Seiler, W. and Crutzen, P. J.: Estimates of gross and net fluxes of carbon between the biosphere and the atmosphere from biomass burning, *Climatic Change*, 2, 207–247, 1980.
- Shi, Z., Krom, M. D., Bonneville, S., Baker, A. R., Jickells, T. D., and Benning, L. G.: Formation of iron nanoparticles and increase

- in iron reactivity in mineral dust during simulated cloud processing, *Environ. Sci. Technol.*, 43, 6592–6596, 2009.
- Shi, Z., Krom, M. D., Jickells, T. D., Bonneville, S., Carslaw, K. S., Mihalopoulos, N., Baker, A. R., and Benning, L. G.: Impacts on iron solubility in the mineral dust by processes in the source region and the atmosphere: A review, *Aeolian Res.*, 5, 21–42, 2012.
- Sholkovitz, E. R., Sedwick, P. N., Church, T. M., Baker, A. R., and Powell, C. F.: Fractional solubility of aerosol iron: Synthesis of a global-scale data set, *Geochim. Cosmochim. Acta*, 89, 173–189, 2012.
- Siefert, R. L., Johansen, A. M., Hoffmann, M. R., and Pehkonen, S. O.: Measurements of trace metal (Fe, Cu, Mn, Cr) oxidation states in fog and stratus clouds, *J. Air Waste Manage.*, 48, 128–143, 1998.
- Siegenthaler, U. and Sarmiento, J.: Atmospheric carbon dioxide and the ocean, *Nature*, 365, 119–125, 1993.
- Solmon, F., Chuang, P., Meskhidze, N., and Chen, Y.: Acidic processing of mineral dust iron by anthropogenic compounds over the north Pacific Ocean, *J. Geophys. Res.-Atmos.*, 114, D02305, <https://doi.org/10.1029/2008JD010417>, 2009.
- Suarez, M. J., Rienecker, M., Todling, R., Bacmeister, J., Takacs, L., Liu, H., Gu, W., Sienkiewicz, M., Koster, R., and Gelaro, R.: The GEOS-5 Data Assimilation System-Documentation of Versions 5.0.1, 5.1.0, and 5.2.0, 2008.
- Weber, R. J., Guo, H., Russell, A. G., and Nenes, A.: High aerosol acidity despite declining atmospheric sulfate concentrations over the past 15 years, *Nat. Geosci.*, 9, 282–285, <https://doi.org/10.1038/ngeo2665>, 2016.
- Winton, V., Bowie, A., Edwards, R., Keywood, M., Townsend, A., van der Merwe, P., and Bollhöfer, A.: Fractional iron solubility of atmospheric iron inputs to the Southern Ocean, *Mar. Chem.*, 177, 20–32, 2015.
- Xu, N. and Gao, Y.: Characterization of hematite dissolution affected by oxalate coating, kinetics and pH, *Appl. Geochem.*, 23, 783–793, 2008.
- Yu, J. Z., Huang, X.-F., Xu, J., and Hu, M.: When aerosol sulfate goes up, so does oxalate: Implication for the formation mechanisms of oxalate, *Environ. Sci. Technol.*, 39, 128–133, 2005.
- Zender, C. S., Bian, H., and Newman, D.: Mineral Dust Entrainment and Deposition (DEAD) model: Description and 1990s dust climatology, *J. Geophys. Res.-Atmos.*, 108, 4416, <https://doi.org/10.1029/2002JD002775>, 2003.
- Zhang, Y., Mahowald, N., Scanza, R. A., Journet, E., Desboeufs, K., Albani, S., Kok, J. F., Zhuang, G., Chen, Y., Cohen, D. D., Paytan, A., Patey, M. D., Achterberg, E. P., Engelbrecht, J. P., and Fomba, K. W.: Modeling the global emission, transport and deposition of trace elements associated with mineral dust, *Biogeosciences*, 12, 5771–5792, <https://doi.org/10.5194/bg-12-5771-2015>, 2015.
- Zhu, X., Prospero, J., and Millero, F.: Diel variability of soluble Fe (II) and soluble total Fe in North African dust in the trade winds at Barbados, *J. Geophys. Res.*, 102, 21297–21305, 1997.
- Zhuang, G., Yi, Z., Duce, R. A., and Brown, P. R.: Link between iron and sulphur cycles suggested by detection of Fe (n) in remote marine aerosols, 1992.