

University of Groningen

Radiation Dose-Response for Risk of Myocardial Infarction in Breast Cancer Survivors

Jacobse, Judy N.; Duane, Frances K.; Boekel, Naomi B.; Schaapveld, Michael; Hauptmann, Michael; Hooning, Maartje J.; Seynaeve, Caroline M.; Baaijens, Margreet H. A.; Gietema, Jourik A.; Darby, Sarah C.

Published in:
International Journal of Radiation Oncology Biology Physics

DOI:
[10.1016/j.ijrobp.2018.10.025](https://doi.org/10.1016/j.ijrobp.2018.10.025)

IMPORTANT NOTE: You are advised to consult the publisher's version (publisher's PDF) if you wish to cite from it. Please check the document version below.

Document Version
Publisher's PDF, also known as Version of record

Publication date:
2019

[Link to publication in University of Groningen/UMCG research database](#)

Citation for published version (APA):

Jacobse, J. N., Duane, F. K., Boekel, N. B., Schaapveld, M., Hauptmann, M., Hooning, M. J., ... Taylor, C. W. (2019). Radiation Dose-Response for Risk of Myocardial Infarction in Breast Cancer Survivors. *International Journal of Radiation Oncology Biology Physics*, 103(3), 595-604.
<https://doi.org/10.1016/j.ijrobp.2018.10.025>

Copyright

Other than for strictly personal use, it is not permitted to download or to forward/distribute the text or part of it without the consent of the author(s) and/or copyright holder(s), unless the work is under an open content license (like Creative Commons).

Take-down policy

If you believe that this document breaches copyright please contact us providing details, and we will remove access to the work immediately and investigate your claim.

Downloaded from the University of Groningen/UMCG research database (Pure): <http://www.rug.nl/research/portal>. For technical reasons the number of authors shown on this cover page is limited to 10 maximum.

Clinical Investigation

Radiation Dose-Response for Risk of Myocardial Infarction in Breast Cancer Survivors



Judy N. Jacobse, MD,* Frances K. Duane, FFR, RCSI,[†]
Naomi B. Boekel, MSc,* Michael Schaapveld, PhD,*
Michael Hauptmann, PhD,[‡] Maartje J. Hooning, MD, PhD,[§]
Caroline M. Seynaeve, MD, PhD,[§] Margreet H.A. Baaijens, MD,^{||}
Jourik A. Gietema, MD, PhD,[¶] Sarah C. Darby, PhD,**
Flora E. van Leeuwen, PhD,* Berthe M.P. Aleman, MD, PhD,^{††}
and Carolyn W. Taylor, MD, PhD**

*Department of Psychosocial Research and Epidemiology, Netherlands Cancer Institute, Amsterdam, The Netherlands; [†]Medical Research Council Population Health Research Unit, Nuffield Department of Population Health, University of Oxford, Oxford, United Kingdom; [‡]Department of Biostatistics, Netherlands Cancer Institute, Amsterdam, The Netherlands; [§]Departments of Medical Oncology and ^{||}Radiation Oncology, Erasmus MC, Cancer Institute, Rotterdam, The Netherlands; [¶]Department of Medical Oncology, University Medical Center Groningen, Groningen, The Netherlands; **Clinical Trial Service Unit, Nuffield Department of Population Health, University of Oxford, Oxford, United Kingdom; and ^{††}Department of Radiation Oncology, Netherlands Cancer Institute, Amsterdam, The Netherlands

Received Jun 15, 2018. Accepted for publication Oct 19, 2018.

Summary

Previous reports suggest that radiation therapy for breast cancer can cause ischemic

Purpose: Previous reports suggest that radiation therapy for breast cancer (BC) can cause ischemic heart disease, with the radiation-related risk increasing linearly with mean whole heart dose (MWHd). This study aimed to validate these findings in younger BC patients and to investigate additional risk factors for radiation-related myocardial infarction (MI).

Reprint requests to: Berthe M.P. Aleman, MD, PhD, Netherlands Cancer Institute, Department of Radiation Oncology, Plesmanlaan 121, 1066 CX Amsterdam, The Netherlands. Tel: + 31 20 512 2135; E-mail: b.aleman@nki.nl

Judy N. Jacobse and Frances K. Duane made equal contributions to this study.

Berthe M. P. Aleman and Carolyn W. Taylor made equal contributions to this study.

This work was supported by Pink Ribbon/the Dutch Cancer Society (grant number 2012.WO39.C143/NKI 2016-8192). Financial support for F.K.D., S.C.D., and C.W.T. was provided by Cancer Research UK (grant number C8225/A21133), by a research contract to the University of Oxford under the Department of Health Policy Research Programme (Studies

of Ionising Radiation and the Risk of Heart Disease, 091/0203), and by core funding from Cancer Research UK, the UK Medical Research Council, and the British Heart Foundation to the Oxford University Clinical Trial Service Unit (grant number MC_U137686858). S.C.D. acknowledges support from the British Heart Foundation Center of Research Excellence, Oxford (grant number RE/13/1/30181).

Conflicts of interest: none.

Supplementary material for this article can be found at <https://doi.org/10.1016/j.ijrobp.2018.10.025>.

Acknowledgments—The authors thank Marianne Kuenen, Sandra Fase, Kim Kersten, Saskia Pelders, and Karen Kooijman for assistance in data collection.

heart disease, with radiation-related risk increasing linearly with mean whole heart dose. This study aimed to validate these findings and assesses additional risk factors for radiation-related myocardial infarction in a case-control study nested within a cohort of BC survivors treated ≤ 70 years of age during 1970-2009. The study confirms a linear relationship between mean whole heart dose and myocardial infarction risk after radiation for breast cancer.

Methods and Materials: A nested case-control study was conducted within a cohort of BC survivors treated during 1970 to 2009. Cases were 183 patients with MI as their first heart disease after BC. One control per case was selected and matched on age and BC diagnosis date. Information on treatment and cardiovascular risk factors was abstracted from medical and radiation charts. Cardiac doses were estimated for each woman by reconstructing her regimen using modern 3-dimensional computed tomography planning on a typical patient computed tomography scan.

Results: Median age at BC of cases and controls was 50.2 years (interquartile range, 45.7-54.7). Median time to MI was 13.6 years (interquartile range, 9.9-18.1). Median MWHHD was 8.9 Gy (range, 0.3-35.2 Gy). MI rate increased linearly with increasing MWHHD (excess rate ratio [ERR] per Gy, 6.4%; 95% confidence interval, 1.3%-16.0%). Patients receiving ≥ 20 Gy MWHHD had a 3.4-fold (95% confidence interval, 1.5-7.6) higher MI rate than unirradiated patients. ERRs were higher for younger women, with borderline significance (ERR_{<45years}, 24.2%/Gy; ERR _{≥ 50 years}, 2.5%/Gy; $P_{\text{interaction}} = .054$). Whole heart dose-volume parameters did not modify the dose-response relationship significantly.

Conclusions: MI rate after radiation for BC increases linearly with MWHHD. Reductions in MWHHD are expected to contribute to better cardiovascular health of BC survivors. © 2019 The Authors. Published by Elsevier Inc. This is an open access article under the CC BY-NC-ND license (<http://creativecommons.org/licenses/by-nc-nd/4.0/>).

Introduction

Survival in women with breast cancer (BC) has improved substantially in recent decades as a result of more effective treatments and earlier diagnoses.¹⁻⁵ However, radiation therapy, anthracycline-based chemotherapy, and targeted therapies can cause heart disease.⁶⁻⁸ In the case of radiation therapy, cardiac exposure is associated with an increased risk of ischemic heart disease (IHD).⁹⁻¹¹ This may occur through injury to the small vessels in the heart muscle (microvascular damage) or through atherosclerosis of the larger blood vessels (macrovascular damage).^{12,13}

The risk of IHD appears to increase linearly with increasing mean whole heart radiation dose (MWHHD).^{14,15} In a large case-control study of women irradiated for BC, the rate of major coronary events increased by 7.4%/Gy MWHHD.¹⁴ The increase started within 5 years of exposure, sooner than previously anticipated.^{16,17} It was also found that the percentage increase in IHD per Gy was similar in women with and without cardiovascular risk factors, suggesting that the absolute radiation-related increase is higher in those with preexisting cardiovascular risk factors. These associations require further study in younger women (ie, < 50 years) diagnosed with BC.

Substantial progress has been made in reducing cardiac radiation doses in BC radiotherapy.¹⁸⁻²⁰ Nevertheless, some recent regimens used to irradiate the left internal mammary nodes still may expose the heart to ≈ 8 Gy.²¹ Quantification of the effect of radiation on the heart may help to predict IHD risk for women being considered for BC radiation therapy today. It may also help to identify BC survivors who may benefit from cardiac surveillance.

This study aimed to examine the radiation dose-response relationship for myocardial infarction (MI) in a population

of younger BC patients (median age 50 years at BC diagnosis). It also investigates the effects of different whole heart dose-volume radiation measures and cardiovascular risk factors on the dose-response relationship.

Methods

Cohort population

A nested case-control study of MI after BC was conducted within a cohort of long-term BC survivors treated in the Netherlands between 1970 and 2009. The cohort was identified through hospital-based registries at the Netherlands Cancer Institute, Amsterdam and Erasmus MC-Cancer Institute, Rotterdam, the Netherlands. Female patients were included in the cohort if they had histologically confirmed, stage I to III invasive BC or ductal carcinoma in situ and were diagnosed before the age of 71 years. Details of the data collection procedures have been published previously^{10,22} and are outlined in [Methods E1](#) (available online at <https://doi.org/10.1016/j.ijrobp.2018.10.025>). In brief, for patients in the cohort, information on BC recurrence, distant metastases, second cancer incidence, cardiovascular disease incidence, cardiovascular risk factors, and causes of death was obtained through registries, medical files, general practitioners, and cardiologists.

Case-control study

MI diagnoses in the cohort were ascertained from medical files and through questionnaires sent to the general practitioner. In the Netherlands, all residents are expected to have a general practitioner. Medical correspondence from

attending physicians is sent to the general practitioner. Such records are preserved by the general practitioner throughout a patient's life and for at least 15 years after a patient's death. When the treating cardiologist was known and event information obtained from the general practitioner/medical file was unclear, an additional questionnaire was sent to the cardiologist to confirm the MI diagnosis. Patients with MI after BC were eligible as cases if they met the following criteria: (1) BC was the first invasive malignancy (ignoring nonmelanoma skin cancer); (2) they were free from BC recurrence, distant metastases, second cancer, heart failure, and valvular heart disease when diagnosed with MI. Heart failure and valvular heart disease were addressed in separate case-control studies. A rhythm disorder or angina pectoris before MI was not an exclusion criterion. In total 183 patients with a diagnosis of MI after BC were selected as cases.

For each MI case, one control was selected from the cohort, matched on age at BC diagnosis (± 5 years) and date of BC diagnosis (± 5 years). Only patients for whom we could collect information on cardiovascular disease were considered as potential controls. Controls had to be alive and free from BC recurrence, distant metastases, second cancer, MI, heart failure, and valvular heart disease until the cutoff date, which was defined as the date of BC diagnosis plus a time interval equal to the time between BC diagnosis and MI diagnosis for the paired case. Cases were permitted to be controls up to the date when they developed MI, and controls were selected with replacement. In total, 183 controls (178 unique individuals) were matched to the cases. Four controls later became a case.

Data collection

Data at BC diagnosis regarding medical history (including prior cardiovascular diseases, diabetes, and hypertension), smoking history, and body mass index (BMI) were abstracted from medical files. Hypertension was coded as present if a patient was on medication for hypertension or if a diagnosis of hypertension was given in the medical record. Information on cardiovascular risk factors diagnosed after BC diagnosis was also collected. Treatment information, including surgery, chemotherapy regimen, and endocrine therapy, was abstracted. Copies of radiation charts for individual patients were obtained for patients who received radiation therapy. Information on target definition, field borders, total dose, dose per fraction, beam energy, and the use of shielding, wedges, and bolus was obtained from the charts.

Radiation therapy dosimetry

A 'typical computed tomography (CT) scan' was used to estimate cardiac doses retrospectively for each woman in the study (Methods E2; available online at <https://doi.org/10.1016/j.ijrobp.2018.10.025>). Radiation therapy charts

were available for 314 of the 316 individual irradiated women in the study. Fifty-two regimens were identified and reconstructed on the typical CT scan (Table E1; available online at <https://doi.org/10.1016/j.ijrobp.2018.10.025>). Dose distributions were generated for cobalt, electron, and megavoltage beams using modern 3-dimensional CT treatment planning (Varian Eclipse™ Treatment Planning System Version 10.0.39, Varian Medical Systems, Palo Alto, CA). Dose distributions from orthovoltage fields were generated using manual planning. Typical MWHd, mean left ventricle dose, and the percentage volume of the heart receiving $\geq 5, 10, 15, 20, 25, 30, 35,$ and 40 Gy (V_5 - V_{40}) were estimated using dose-volume histograms. Doses were estimated for each individual woman using the total dose (100%) received as recorded in individual radiation therapy charts and the dose-volume histogram of the regimen received.

Statistical analysis

Rate ratios (RRs) for MI for different levels of each factor were calculated using logistic regression conditioning on strata. Strata were defined by the matching variables age at BC diagnosis (10-year categories), year of BC diagnosis (10-year categories), and follow-up duration (5-year categories). One individual, who appeared as a control twice within the same stratum, was included only once in the analysis.

Confidence intervals (CIs) were estimated using the Wald method for factors with 2 levels. For factors with more than 2 levels, Wald method CIs were used to derive CIs for each category, including the reference category, from the amount of information in that category.²³ Multivariable regression was used to assess and control for potential confounders. A factor was considered a potential confounder if the RR after adjustment for the factor changed by 10% or more.

The excess rate ratio (ERR) of MI associated with a one Gy increase in radiation exposure (ie, the proportional increase in MI rate per unit increase in dose) was estimated using a linear odds model conditional on strata defined by the matching variables. The model for the MI rate was $K_m(1 + \beta d)$ where d is MWHd for each woman, K_m is the MI rate at zero MWHd in the m^{th} stratum, and β is the ERR. Nonlinearity was tested by adding an exponential term: $K_m(1 + \beta d \cdot \exp[\delta d])$. The significance of the dose-response relationship was evaluated using the likelihood ratio test. Interactions were evaluated by including interaction terms as categorical or continuous variables.

Approximate cumulative MI risks and 95% CIs were estimated from the treatment-specific RRs together with the cumulative MI risk for the entire cohort. Death from any cause other than MI or sudden cardiac death was treated as a competing risk. Overall survival rates after a diagnosis of MI were estimated using the Kaplan-Meier method with cases censored at either last known follow-up date or date

of death. Analyses were performed using Stata Statistical Software version 13.0 (StataCorp LP, College Station, TX) and Epicure version 1.8 (Hirosoft International, Eureka, CA).

Results

Patient characteristics

The median age of cases at BC diagnosis was 50.2 years (interquartile range [IQR], 45.8-54.7; [Table 1](#)). Median time between BC diagnosis and MI diagnosis was 13.6 years (IQR, 10.3-18.2). Left-sided BC was more common than right-sided BC in cases and controls (53.6% and 55.5% left-sided vs 46.4% and 44.5% right-sided, respectively) and 57.9% of cases and 58.8% of controls had node-negative disease at BC diagnosis; these differences were not statistically significant ([Table 1](#)). Five year and 15-year cumulative survival among cases were 85% and 56%, respectively ([Fig. E1](#); available online at <https://doi.org/10.1016/j.ijrobp.2018.10.025>). Twenty-three patients (13%) died on the day of MI diagnosis.

Treatment-related risk factors

Surgery, endocrine therapy, and chemotherapy (with or without anthracyclines) were not associated with a significantly increased MI rate (RR mastectomy vs breast-conserving surgery, 1.04 [95% CI, 0.58-1.86]; RR hormone therapy vs not, 0.71 [95% CI, 0.29-1.75]; RR non-anthracycline chemotherapy vs no chemotherapy, 0.59 [95% CI, 0.33-1.07], and RR anthracyclines vs no chemotherapy, 1.04 [95% CI, 0.41-2.63]; [Table 2](#)). Internal mammary chain (IMC) irradiation was associated with a 2.45-fold increased MI rate (95% CI, 1.97-3.05). Median MWHd was 8.9 Gy (IQR, 4.8-15.0) for cases and 8.5 Gy (IQR, 4.3-12.2) for controls ([Table 2](#)). Heart dose estimates were highest for patients who received radiation to the IMC only or IMC combined with breast or chest wall irradiation (mean MWHd for right-sided breast + IMC, chest wall + IMC, and IMC only were 14.5, 10.7, 9.1 Gy, respectively; mean MWHd for left-sided breast + IMC, chest wall + IMC, and IMC only were 18.6, 16.3, 14.2 Gy, respectively) ([Table E2](#); available online at <https://doi.org/10.1016/j.ijrobp.2018.10.025>). MI rate increased with increasing MWHd (P trend, .011), and there was a 3.4-fold (95% CI, 1.54-7.62) increased rate for patients who received a MWHd ≥ 20 Gy compared with patients who received no radiation therapy ([Table 2](#)). Neither the use of chemotherapy nor the presence of cardiovascular risk factors significantly confounded the association between MWHd and MI rate ([Table E3](#); available online at <https://doi.org/10.1016/j.ijrobp.2018.10.025>). When we restricted the analysis to irradiated cases and controls, similar rate increases for the different radiation dose categories were found ([Table E4](#); available online at <https://doi.org/10.1016/j.ijrobp.2018.10.025>).

[1016/j.ijrobp.2018.10.025](https://doi.org/10.1016/j.ijrobp.2018.10.025)). Approximate 20-year cumulative risks were 0.9% (95% CI, 0.5-2.0), 1.8% (95% CI, 0.9-2.6), 2.1% (95% CI, 1.6-2.6), 2.5% (95% CI, 1.9-3.2), and 4.2% (95% CI, 1.2-7.2) for no radiation therapy and MWHd categories < 2 Gy, 2 to 9 Gy, 10 to 19 Gy, and ≥ 20 Gy, respectively ([Fig. 1](#)).

Cardiovascular risk factors

Hypertension and a BMI ≥ 30 , recorded at BC diagnosis, were the only individual patient-related cardiovascular risk factors significantly associated with an increased MI rate ([Table E5](#); available online at <https://doi.org/10.1016/j.ijrobp.2018.10.025>). However, the presence of at least 1 cardiovascular risk factor (angina pectoris, chronic obstructive pulmonary disease, diabetes, hypertension, smoking, BMI ≥ 30) at BC diagnosis was associated with an RR of 1.70 (95% CI, 1.13-2.55) compared with no cardiovascular risk factors. When cardiovascular risk factors ever diagnosed (ie, during follow-up as well as at BC diagnosis) were taken into account, MI rate was higher (RR, 1.86; 95% CI, 1.19-2.90) ([Table E5](#); available online at <https://doi.org/10.1016/j.ijrobp.2018.10.025>).

Radiation dose-response relationship

A linear dose-response relationship between MWHd and MI rate was found. The ERR for MI increased by 6.4%/Gy (95% CI, 1.3%-16.0%; [Fig. 2](#)). A model that allowed for curvature gave no significant improvement in fit. When considering potential modifiers of the effect of MWHd on MI rate ([Table 3](#)), we found that ERRs were highest in women aged < 45 years at BC diagnosis (24.2%/Gy; 95% CI, 4.4%-82.3%) and tended to decrease with older age (ERR $_{\geq 50-70}$ years, 2.5%/Gy; 95% CI, -1.4% to 11.9%) ($P_{\text{interaction}}$ based on trend test, .07; $P_{\text{interaction}}$ based on test for homogeneity between ERR $_{< 45}$ years and ERR $_{\geq 50-70}$ years, .054). ERRs increased with longer follow-up ($P_{\text{interaction}}$ based on trend test, .25; $P_{\text{interaction}}$ based on test for homogeneity between ERR $_{< 10}$ years and ERR $_{\geq 15}$ years, 0.053). The dose-response relationship for women with and without cardiovascular risk factors at BC diagnosis was similar ($P_{\text{interaction}} > .50$). Also, when considering cardiovascular risk factors ever diagnosed, results did not change.

Whole heart dose-volume parameters

MWHd, mean left ventricle dose, and whole heart dose-volume measures were highly correlated (Pearson correlation coefficients ranged from 0.69 to 0.96). No other confounders of the relationship between V5 to V40 and MI rate were identified. In univariable models, MI rates were significantly increased when $\geq 30\%$ of the heart received 5 to 30 Gy (RRs, 1.97-2.86; [Table 4](#)). The addition of MWHd as a continuous parameter to the separate dose-volume models did not significantly improve the fit of the

Table 1 Characteristics of myocardial infarction cases and matched controls

| Total | Cases | | Controls | | P [‡] |
|--|---------|----------------------|----------------------|----------------------|----------------|
| | 183 (N) | 100 (%) [*] | 182 [†] (N) | 100 (%) [*] | |
| Age at breast cancer diagnosis [§] | | | | | |
| Median age (IQR) in years | 50.2 | 45.8-54.7 | 50.2 | 45.5-54.6 | |
| <40 (22-39) y | 9 | 4.9 | 10 | 5.5 | |
| 40-49 y | 78 | 42.6 | 78 | 42.9 | |
| 50-59 y | 77 | 42.1 | 75 | 41.2 | |
| ≥60 (60-70) y | 19 | 10.4 | 19 | 10.4 | |
| Year of breast cancer diagnosis [§] | | | | | |
| 1970-1979 | 41 | 22.4 | 41 | 22.5 | |
| 1980-1989 | 95 | 51.9 | 92 | 55.6 | |
| 1990-1999 | 29 | 15.9 | 34 | 18.7 | |
| 2000-2009 | 18 | 9.8 | 15 | 8.2 | |
| Time to MI/cutoff date ^{§,¶} | | | | | |
| Median time (IQR) in years | 13.6 | 10.3-18.2 | 13.7 | 10.3-18.2 | |
| <5 (1-4) y | 13 | 7.1 | 13 | 7.1 | |
| 5-9 y | 31 | 16.9 | 31 | 17.0 | |
| 10-14 y | 60 | 32.8 | 59 | 32.4 | |
| 15-19 y | 48 | 26.2 | 48 | 26.4 | |
| ≥20 (20-29) y | 31 | 16.9 | 31 | 17.0 | |
| Age at MI diagnosis/cutoff date [¶] | | | | | |
| Median age (IQR) in years | 64.2 | 58.5-70.2 | 63.9 | 58.5-70.2 | |
| <50 (40-49) y | 7 | 3.8 | 8 | 4.4 | |
| 50-59 y | 51 | 27.9 | 50 | 27.5 | |
| 60-69 y | 74 | 40.4 | 74 | 40.7 | |
| 70-79 y | 45 | 24.6 | 44 | 24.2 | |
| ≥80 (83-89) y | 6 | 3.3 | 6 | 3.3 | |
| Laterality of breast cancer | | | | | |
| Right | 85 | 46.4 | 81 | 44.5 | |
| Left | 98 | 53.6 | 101 | 55.5 | .72 |
| Nodal status | | | | | |
| Negative | 106 | 57.9 | 107 | 58.8 | |
| Positive | 75 | 41.0 | 74 | 40.7 | |
| Unknown | 2 | 1.1 | 1 | 0.5 | .91 |
| Tumor size [*] | | | | | |
| <2 cm | 58 | 31.7 | 76 | 41.8 | |
| 2-5 cm | 88 | 48.1 | 72 | 39.6 | |
| ≥5 cm | 6 | 3.3 | 10 | 5.5 | |
| Unknown | 31 | 16.9 | 24 | 13.2 | .09 |

Abbreviations: BC = breast cancer; IQR = interquartile range; MI = myocardial infarction.

* Percentages may not total 100 because of rounding.

† Cases and controls were selected with replacement. When an individual appeared as a control twice within the same stratum, it was included only once in the analysis (n = 1).

‡ P value for difference between tumor characteristics of cases and controls, calculated within strata (defined by matching variables) and excluding the unknown category.

§ Matching variables.

¶ Derived from matching factors. Cutoff date for controls was defined as the date of BC diagnosis plus a time interval equal to the time between BC diagnosis and MI diagnosis for the paired case.

models. Furthermore none of the dose-volume parameters was a better predictor than MWHD for the development of MI (ie, the deviance of ERR models was similar or worse when the dose-volume parameters were used to predict MI instead of the MWHD). Also, the addition of V5 to V40 to the linear odds model for MWHD did not significantly improve the fit of the ERR model (data not shown). No evidence for effect modification by any of the dose-volume parameters V5 to V40 was found (data not shown).

Discussion

In this study we found that MI rate increases linearly by 6.4% per Gy increase in MWHD in BC survivors with a median age of 50 years at BC diagnosis and that there was a 3.4-fold increased MI rate at a MWHD of ≥20 Gy. We did not find any evidence that the percentage increase in MWHD rate per Gy differed by presence or absence of

Table 2 Associations between treatment characteristics and rate of myocardial infarction

| Total | Cases | | Controls | | Rate ratio* | 95% CI | P [†] |
|---|---------|----------------------|----------|----------------------|-------------------|-----------|-------------------|
| | 183 (N) | 100 (%) [‡] | 182 (N) | 100 (%) [‡] | | | |
| Treatment model | | | | | | | |
| Surgery | | | | | | | |
| Breast conserving surgery (BCS) | 82 | 44.8 | 87 | 47.8 | 1.00 [§] | - | |
| Mastectomy | 101 | 55.2 | 95 | 52.2 | 1.04 | 0.58-1.86 | .90 |
| Endocrine therapy | | | | | | | |
| No | 167 | 91.3 | 166 | 91.2 | 1.00 [§] | - | |
| Yes | 16 | 8.7 | 16 | 8.8 | 0.71 | 0.29-1.75 | .46 |
| Chemotherapy (CT) | | | | | | | |
| No | 140 | 76.5 | 132 | 72.5 | 1.00 [§] | 0.89-1.12 | |
| CT, no anthracyclines | 29 | 15.9 | 36 | 19.8 | 0.59 | 0.33-1.07 | |
| Anthracycline-based CT | 14 | 7.7 | 14 | 7.7 | 1.04 | 0.41-2.63 | .23 |
| Radiation therapy (RT) | | | | | | | |
| No | 16 | 8.7 | 27 | 14.8 | 1.00 [‡] | 0.50-1.99 | |
| RT, no IMC | 51 | 27.9 | 65 | 35.7 | 1.20 | 0.67-2.18 | |
| RT, IMC | 116 | 63.4 | 90 | 49.5 | 2.45 | 1.97-3.05 | .006 |
| Mean whole heart dose (MWHHD) | | | | | | | |
| Median MWHHD (IQR) in Gy | 8.9 | 4.8-15.0 | 8.5 | 4.3-12.2 | | | |
| No RT | 16 | 8.8 | 27 | 15.0 | 1.00 [§] | 0.52-1.91 | |
| <2 Gy (mean 1 Gy) | 29 | 15.9 | 34 | 18.9 | 1.44 | 0.84-2.48 | |
| 2-9 Gy (mean 7 Gy) | 62 | 34.1 | 62 | 34.4 | 1.72 | 1.23-2.42 | |
| 10-19 Gy (mean 14 Gy) | 57 | 31.3 | 48 | 26.7 | 2.06 | 1.40-3.02 | |
| ≥20 Gy (mean 26 Gy) | 18 | 9.9 | 9 | 5.0 | 3.42 | 1.54-7.62 | .011 [¶] |

Abbreviations: CI = confidence interval; IMC = internal mammary chain; IQR = interquartile range; MI = myocardial infarction.

* Univariable rate ratios for MI for different levels of each factor were calculated using logistic regression conditioning on strata defined by the matching variables.

[†] P value for difference between treatment characteristics of cases and controls, calculated within strata (defined by matching variables).

[‡] Percentages may not total 100 because of rounding.

[§] Reference category.

^{||} This model includes 362 patients. Three patients were dropped; for one irradiated case and one irradiated control, dosimetry was not performed. One control was dropped because it was the only patient left in the stratum.

[¶] P for trend across categories.

cardiovascular risk factors at BC diagnosis. These findings are consistent with the previously published radiation dose-response relationship between MWHHD and MI rate in BC survivors, which found an MI rate of 7.4% per Gy increase in MWHHD for women both with and without cardiovascular risk factors at time of radiotherapy.¹⁴ Moreover, similar results were reported in a study assessing the dose-response relationship for MWHHD and the risk of IHD in Hodgkin lymphoma (HL) survivors.¹⁵

Our results suggest that ERR per Gy was higher for the youngest women (aged <45 years at BC diagnosis) and this effect had borderline significance ($P_{\text{interaction}} = .054$). It is notable that Van Nimwegen et al¹⁵ also found ERRs to be highest in patients treated for HL at the youngest ages. However, ERRs for HL patients treated at an age comparable to our youngest age group were lower than we identified (ie, 4.2%/Gy in HL patients irradiated between ages 36 and 50 vs 24.2%/Gy in our patients irradiated at <45 years, median 37 years).¹⁵ In a case-control study by Darby et al,¹⁴ no significant effect of age was found on the slope of the dose-response relationship between MWHHD

and major coronary event rate. Some cohort studies in HL survivors and BC survivors have, however, reported that younger age is associated with higher relative risks of radiation-induced heart disease.²⁴ Whether radiation therapy is associated with larger percentage increases in the MI rate per Gy MWHHD in very young BC patients (ie, treated before age 40 years) remains an important gap in knowledge and requires further investigation.

In some earlier studies it was found that radiation therapy was not associated with IHD during the first 10 years after exposure,^{16,17} but evidence is now emerging that radiation therapy can lead to increased IHD rates within the first 5 years.^{14,25} We, however, did not identify increased MI rates within the first 10 years after BC diagnosis ($\text{ERR}_{<10\text{years}}, -0.1\%$; 95% CI, -2.9% to 9.5%). This could be due to the inclusion of relatively young women in our study; almost 90% of our patients were aged <60 years at BC diagnosis. In contrast, in the study by Darby et al¹⁴ almost half of included women were aged ≥60 years at BC diagnosis. In another study, presenting increased rates of major acute coronary events in relation to MHD within

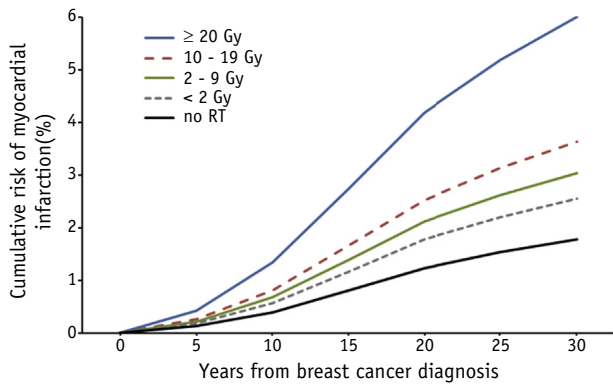


Fig. 1. Modeled cumulative myocardial infarction risk for cases by categories of mean whole heart dose. Cumulative risks of myocardial infarction (MI) as a first cardiac event among women diagnosed with breast cancer (BC) when aged ≤ 70 years (median age at BC diagnosis, 50.2 years (interquartile ratio [IQR], 45.8-54.7) and median age at MI diagnosis, 64.1 years (IQR, 58.5-70.2)) by time since initial BC treatment for categories of mean whole heart dose. Cumulative risks were calculated from the MI rate ratios for different dose categories (Table 2) and the cumulative MI risk for the entire BC cohort in which this study is embedded, with death as a competing event. *Abbreviation:* RT = radiation therapy.

9 years after radiation therapy, median age of included women was also higher (59 years; range, 26-84 years) compared with the median age of our study population.²⁵ Strong conclusions about the presence of latency in the development of radiation-induced IHD, however, cannot be drawn from our data because follow-up time was not a significant effect modifier and the number of included cases is rather small to assess the effects in different follow-up groups.

We found that none of the whole heart dose-volume parameters was a better predictor than MWHHD for the development of MI and we found no evidence for effect modification of the dose-response relationship by any of the dose-volume measures. In a recent study among women treated during 2005 to 2008 for BC or ductal carcinoma in situ, the left ventricle V5 (LV-V5) seemed to be a better predictor of acute coronary events than MWHHD.²⁵ An important limitation of that study is, however, that there were only 30 patients who developed an event, whereas we included 183 cases of MI after BC radiation therapy. The women included in the 2 studies were also irradiated in different eras, 1970s to 2000s in our study and 2005 to 2008 in the other study, so radiation techniques and the distribution of MWHHD are different. Hence we cannot compare our findings directly.

More information is needed on whether, for a given MWHHD, the dose-response relationship differs in situations in which the heart is partly irradiated (“a lot to a little”) versus situations in which the heart is homogeneously irradiated (“a little to a lot”).²⁶ Our data, however, do not

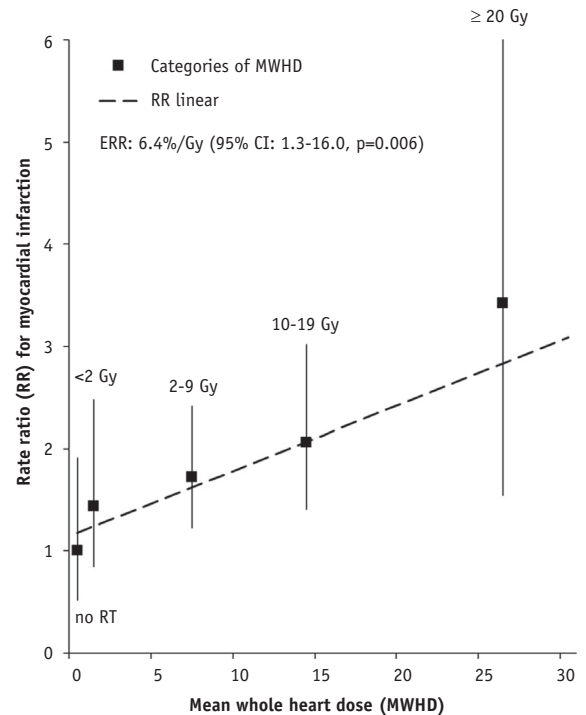


Fig. 2. Dose-response relationship between rate of myocardial infarction and mean whole heart dose. The regression line is the best fitting linear dose response relationship ($RR = \kappa[1.18 + 0.06389 \cdot MWHHD]$; $P = .006$). This results in an ERR of 6.4%/Gy (95% CI, 1.3-16.0). Squares indicate point estimates for dose categories (no RT, <2 Gy, 2-9 Gy, 10-19 Gy, ≥ 20 Gy; Table 2) and are plotted at the mean MWHHD of each dose category. No significant departure from linearity was identified. The sum of the squared distances between the point estimates for dose categories was used to find the best fit of the linear dose-response to the categorical estimates, resulting in a linear RR of 1.18 at 0 Gy. *Abbreviations:* CI = confidence interval; ERR = excess rate ratio; MWHHD = mean whole heart dose; RR = rate ratio; RT = radiation therapy.

allow us to study whether, for a given MWHHD, dose inhomogeneity across the heart is a significant predictor of MI. Variation in the dose-volume measures was limited given that most women received a high dose to a small part of the heart (“a lot to a little”) and MWHHD and our dose-volume measures were strongly correlated. Furthermore the number of cases in each dose-volume category was too low to draw conclusions around the effects of exposing varying proportions of the heart to a certain radiation dose. Schneider et al²⁶ investigated this topic by modeling the dose-response relationship using relative seriality models to extrapolate to situations in which no data are currently available. They suggested that the dose-response relationship may be sigmoidal rather than linear when the heart is homogeneously irradiated (“a little to a lot”). In a recent paper by Hahn et al,²⁷ among HL survivors it was also found that increasing dose inhomogeneity was a significant

Table 3 Excess rate ratios of myocardial infarction per Gy mean whole heart dose for subgroups

| | Cases (N) | Controls (N) | ERR (%) | 95% CI | P |
|---|-----------|--------------|---------|--------------|--------|
| All patients | 183 | 182 | 6.4 | 1.3-16.0 | 0.006* |
| Age at BC diagnosis | | | | | |
| <45 y | 40 | 41 | 24.2 | 4.4-82.3 | |
| 45-49 y | 47 | 47 | 11.1 | 1.2-40.1 | |
| 50-70 y | 96 | 94 | 2.5 | -1.4 to 11.9 | .07† |
| Year of BC diagnosis | | | | | |
| 1970-1979 | 41 | 41 | 4.0 | -3.0 to 30.2 | |
| 1980-1989 | 95 | 92 | 8.0 | 0.8-26.2 | |
| 1990-1999 | 29 | 34 | 10.5 | 0.0-40.8 | |
| ≥2000 | 18 | 15 | -1.6 | -5.1 to 21.9 | >.50‡ |
| Time to MI/cutoff date | | | | | |
| <10 y | 44 | 44 | -0.1 | -2.9 to 9.5 | |
| 10-14 y | 60 | 59 | 7.2 | -0.8 to 32.3 | |
| ≥15 y | 79 | 79 | 15.1 | 2.9-49.3 | .25† |
| Chemotherapy (CT) | | | | | |
| No | 140 | 132 | 9.9 | 2.4-25.5 | |
| CT, no anthracyclines | 29 | 36 | 1.5 | -2.4 to 24.6 | |
| Anthracycline-based CT | 14 | 14 | 9.0 | -4.2 to 113 | >.50‡ |
| Cardiovascular risk factors at BC diagnosis | | | | | |
| No | 77 | 101 | 5.1 | -0.3 to 17.3 | |
| Yes | 106 | 81 | 7.6 | 0.1-27.6 | >.50‡ |
| Cardiovascular risk factors ever diagnosed | | | | | |
| No | 51 | 75 | 3.9 | -1.6 to 18.7 | |
| Yes | 132 | 107 | 7.3 | 0.9-22.0 | >.50‡ |
| Smoking | | | | | |
| Never smoked | 96 | 106 | 6.8 | 0.4-21.0 | |
| Ever smoked | 87 | 76 | 5.4 | -0.7 to 21.5 | >.50‡ |

Abbreviations: BC = breast cancer; CI = confidence interval; ERR = excess rate ratio; MI = myocardial infarction.

* P for test of ERR = 0.

† P for interaction based on trend test with time/age as a continuous variable.

‡ P for interaction based on test for homogeneity across categories.

predictor of cardiac toxicity and ischemic cardiac events. Studies including women irradiated with CT-based radiation therapy planning and women who received intensity modulated radiation therapy will further enable investigation of the role of dose-volume parameters in relation to the development of IHD among BC survivors.

A limitation of our study was that we were unable to use dosimetry data derived from CT-planning scans of the patients themselves because most women were treated before the era of CT planning. Instead, individual radiation therapy regimens for irradiated patients were reconstructed on the CT scan of a typical patient and thus the cardiac doses may differ from presented estimates, principally because of variation in anatomy (Methods E1; available online at [10.1016/j.ijrobp.2018.10.025](https://doi.org/10.1016/j.ijrobp.2018.10.025)). The magnitude of these differences will be similar for cases and controls, but it will differ between different regimens. The nature of this error, known as a Berkson error, has been found to cause no bias in the resulting dose-response relationship.²⁸ Furthermore, it should be noted that cumulative MI risks by dose categories were estimated based on the cumulative MI risk identified in our BC cohort. Over the past decade, decreases in MI rate have been reported in the general population.

Because the cumulative absolute risk is affected by the background MI rate, the cumulative incidence for future BC patients is likely to be lower than presented here.

An important strength is that this large case-control study is nested within a well-characterized cohort for which comprehensive oncologic and cardiovascular follow-up information was available. We ascertained MI diagnosis through the patients' GP, who in the Netherlands routinely receives medical correspondence from attending physicians or the treating cardiologist. Furthermore, individual patient dosimetry was performed and we found no evidence for selection of irradiated patients according to health status, because our sensitivity analyses restricted to irradiated patients indicated similar risk estimates for categories of MWHD.

Conclusions

We found a linear dose-response relationship between MWHD and MI rate in a population of younger BC patients (median age of 50 years at BC diagnosis), suggesting that there is no apparent threshold dose below which MI rate is

Table 4 Associations between percentage of heart volume receiving ≥ 5 -40 Gy and rate of myocardial infarction

| Percentage of heart volume receiving ≥ 5 -40 Gy (V ₅ -V ₄₀) | Total [§] | Median value (IQR) | Cases | | Controls | | Rate ratio* | 95% CI [†] | P [‡] |
|---|--------------------|--------------------|---------|-----------------------|----------|-----------------------|-------------------|---------------------|----------------|
| | | | 170 (N) | 100 (%) | 169 (N) | 100 (%) | | | |
| V ₅ | | 40.2 (11.1-87.6) | | | | | | | |
| <10% | | | 44 | 25.9 | 62 | 36.7 | 1.00 [¶] | 0.68-1.47 | - |
| 10%-29% | | | 29 | 17.1 | 35 | 20.7 | 1.20 | 0.73-1.99 | .57 |
| $\geq 30\%$ | | | 97 | 57.1 | 72 | 42.6 | 2.02 | 1.43-2.85 | .008 |
| V ₁₀ | | 37.1 (8.8-60.7) | | | | | | | |
| <10% | | | 63 | 37.1 | 88 | 52.1 | 1.00 [¶] | 0.70-1.43 | - |
| 10%-29% | | | 21 | 12.4 | 15 | 8.9 | 1.96 | 0.99-3.87 | .09 |
| $\geq 30\%$ | | | 86 | 50.6 | 66 | 39.1 | 1.97 | 1.40-2.78 | .007 |
| V ₁₅ | | 29.3 (8.0-40.5) | | | | | | | |
| <10% | | | 64 | 37.7 | 91 | 53.8 | 1.00 [¶] | 0.72-1.39 | - |
| 10%-29% | | | 22 | 12.9 | 15 | 8.9 | 2.01 | 1.03-3.93 | .07 |
| $\geq 30\%$ | | | 84 | 49.4 | 63 | 37.3 | 2.05 | 1.41-2.98 | .005 |
| V ₂₀ | | 17.1 (7.4-36.5) | | | | | | | |
| <10% | | | 73 | 42.9 | 97 | 57.4 | 1.00 [¶] | 0.71-1.41 | - |
| 10%-29% | | | 34 | 20.0 | 33 | 19.5 | 1.42 | 0.87-2.30 | .25 |
| $\geq 30\%$ | | | 63 | 37.1 | 39 | 23.1 | 2.28 | 1.53-3.41 | .002 |
| V ₂₅ | | 10.7 (6.8-19.1) | | | | | | | |
| <10% | | | 77 | 45.3 | 104 | 61.5 | 1.00 [¶] | 0.73-1.37 | - |
| 10%-29% | | | 53 | 31.2 | 46 | 27.2 | 1.60 | 1.04-2.45 | .08 |
| $\geq 30\%$ | | | 40 | 23.5 | 19 | 11.2 | 2.86 | 1.67-4.90 | .001 |
| V ₃₀ | | 6.6 (4.4-11.4) | | | | | | | |
| <10% | | | 119 | 70.0 | 140 | 82.8 | 1.00 [¶] | 0.78-1.29 | - |
| 10%-29% | | | 25 | 14.7 | 14 | 8.3 | 2.15 | 1.11-4.13 | .033 |
| $\geq 30\%$ | | | 26 | 15.3 | 15 | 8.9 | 2.12 | 1.12-4.01 | .033 |
| V ₃₅ | | 3.0 (1.2-6.2) | | | | | | | |
| <10% | | | 132 | 77.7 | 149 | 88.2 | 1.00 [¶] | 0.76-1.31 | - |
| 10%-29% | | | 24 | 14.1 | 12 | 7.1 | 2.32 | 1.17-4.58 | .025 |
| $\geq 30\%$ | | | 14 | 8.2 | 8 | 4.7 | 2.11 | 0.89-5.03 | .11 |
| V ₄₀ | | 0.3 (0-5.4) | | | | | | | |
| <10% | | | 143 | 84.1 | 154 | 91.1 | 1.00 [¶] | 0.88-1.13 | - |
| 10%-29% | | | 23 | 13.5 | 14 | 8.3 | 1.77 | 0.88-3.57 | .12 |
| $\geq 30\%$ | | | 4 | 2.4 | 1 | 0.6 | 5.29 | 0.57-49.4 | .15 |

Abbreviations: CI = confidence interval; IQR = interquartile range; MI = myocardial infarction.

* Univariable rate ratios for MI for different levels of each factor were calculated using logistic regression conditioning on strata defined by the matching variables.

† Wald method CIs were used to derive CIs for each category, including the reference category.

‡ P value for difference of dose-volume categories of cases and controls, calculated within strata (defined by matching variables), with <10% as a fixed reference group.

§ This model includes 339 patients. Twenty-six patients were dropped: for one irradiated case and one irradiated control, dosimetry was not performed. For 22 patients (11 cases and 11 controls) it was not possible to estimate dose-volume parameters study because they had a combination of orthovoltage and electron/megavoltage treatment (manual planning). One case and one control were additionally dropped because they were the only patient left in the stratum.

|| Percentages may not total 100 because of rounding.

¶ Reference category.

not increased. Our findings stress the importance of maximally reducing MWHG using modern radiation techniques to optimize the cardiovascular health of BC survivors.

References

1. Peto R, Davies C, Godwin J, et al. Comparisons between different polychemotherapy regimens for early breast cancer: Meta-analyses of long-term outcome among 100,000 women in 123 randomised trials. *Lancet* 2012;379:432-444.
2. Romond EH, Perez Ea, Bryant J, et al. Trastuzumab plus adjuvant chemotherapy for operable HER2-positive breast cancer. *N Engl J Med* 2005;353:1673-1684.
3. Mackey JR, Martin M, Pienkowski T, et al. Adjuvant docetaxel, doxorubicin, and cyclophosphamide in node-positive breast cancer: 10-year follow-up of the phase 3 randomised BCIRG 001 trial. *Lancet Oncol* 2013;14:72-80.
4. Early Breast Cancer Trialists' Collaborative Group (EBCTCG). Effect of radiotherapy after mastectomy and axillary surgery on 10-year

- recurrence and 20-year breast cancer mortality: Meta-analysis of individual patient data for 8135 women in 22 randomised trials. *Lancet* 2014;383:2127-2135.
5. Early Breast Cancer Trialists' Collaborative Group (EBCTCG). Effects of chemotherapy and hormonal therapy for early breast cancer on recurrence and 15-year survival: An overview of the randomised trials. *Lancet* 2005;365:1687-1717.
 6. Eschenhagen T, Force T, Ewer MS, et al. Cardiovascular side effects of cancer therapies: A position statement from the Heart Failure Association of the European Society of Cardiology. *Eur J Heart Fail* 2011;13:1-10.
 7. Suter TM, Ewer MS. Clinical update Cancer drugs and the heart: Importance and management. *Eur Heart J* 2013;34:1102-1111.
 8. Zamorano LJ, Lancelotti P, Muñoz DR, et al. 2016 ESC Position Paper on cancer treatments and cardiovascular toxicity developed under the auspices of the ESC Committee for Practice Guidelines: The Task Force for Cancer Treatments and Cardiovascular Toxicity of the European Society of Cardiology (ESC). *Eur Heart J* 2016;37:2768-2801.
 9. Clarke M, Collins R, Darby S, et al. Effects of radiotherapy and of differences in the extent of surgery for early breast cancer on local recurrence and 15-year survival: An overview of the randomised trials. *Lancet* 2005;366:2087-2106.
 10. Hooning MJ, Botma A, Aleman BMP, et al. Long-term risk of cardiovascular disease in 10-year survivors of breast cancer. *J Natl Cancer Inst* 2007;99(5):365-375.
 11. Boekel NB, Schaapveld M, Gietema JA, et al. Cardiovascular disease risk in a large, population-based cohort of breast cancer survivors. *Radiat Oncol Biol* 2016;94:1061-1072.
 12. Darby SC, Cutter DJ, Boerma M, et al. Radiation-related heart disease: Current knowledge and future prospects. *Int J Radiat Oncol Biol Phys* 2010;76:656-665.
 13. Zagar TM, Cardinale DM, Marks LB. Breast cancer therapy-associated cardiovascular disease. *Nat Rev Clin Oncol* 2016;13:172-184.
 14. Darby SC, Ewertz M, McGale P, et al. Risk of ischemic heart disease in women after radiotherapy for breast cancer. *N Engl J Med* 2013;368:987-998.
 15. Van Nimwegen FA, Schaapveld M, Cutter DJ, et al. Radiation dose-response relationship for risk of coronary heart disease in survivors of Hodgkin lymphoma. *J Clin Oncol* 2015;34:235-241.
 16. Cuzick BJ, Stewart H, Rutqvist L, et al. Cause-specific mortality in long-term survivors of breast cancer who participated in trials of radiotherapy. *J Clin Oncol* 1994;12:447-453.
 17. Hooning MJ, Aleman BMP, Van Rosmalen AJM, Kuenen MA, Klijn JGM, Van Leeuwen FE. Cause-specific mortality in long-term survivors of breast cancer: A 25-year follow-up study. *Int J Radiat Oncol Biol Phys* 2006;64:1081-1091.
 18. Lymberis SC, DeWyngaert JK, Arhar P, et al. Prospective assessment of optimal individual position (prone versus supine) for breast radiotherapy: Volumetric and dosimetric correlations in 100 patients. *Radiat Oncol Biol* 2012;84:902-909.
 19. Mast ME, Van Kempen-Harteveld L, Heijnenbroek MW, et al. Left-sided breast cancer radiotherapy with and without breath-hold: Does IMRT reduce the cardiac dose even further? *Radiother Oncol* 2013;108:248-253.
 20. Mulliez T, Veldeman L, Speleers B, et al. Heart dose reduction by prone deep inspiration breath hold in left-sided breast irradiation. *Radiother Oncol* 2015;114:79-84.
 21. Taylor CW, Wang Z, Macaulay E, Jagsi R, Duane F, Darby SC. Exposure of the heart in breast cancer radiation therapy: A systematic review of heart doses published during 2003 to 2013. *Radiat Oncol Biol* 2015;93:845-853.
 22. Boekel NB, Jacobse JN, Schaapveld M, et al. Cardiovascular disease incidence after internal mammary chain irradiation and anthracycline-based chemotherapy for breast cancer. *Br J Cancer* 2018;119:408-418.
 23. Plummer M. Improved estimates of oating absolute risk. *Stat Med* 2004;23:93-104.
 24. Adams MJ, Lipshultz SE, Schwartz C, Fajardo LF, Coen V, Constine LS. Radiation-associated cardiovascular disease: Manifestations and management. *Semin Radiat Oncol* 2003;13:346-356.
 25. Van den Bogaard VA, BDP Ta, Van Der Schaaf A, et al. Validation and modification of a prediction model for acute cardiac events in patients with breast cancer treated with radiotherapy based on three-dimensional dose distributions to cardiac substructures. *J Clin Oncol* 2017;35:1171-1178.
 26. Schneider U, Ernst M, Hartmann M. The dose-response relationship for cardiovascular disease is not necessarily linear. *Radiat Oncol* 2017;12:10-13.
 27. Hahn E, Jiang H, Ng A, et al. Late cardiac toxicity after mediastinal radiation therapy for Hodgkin lymphoma: Contributions of coronary artery and whole heart dose-volume variables to risk prediction. *Radiat Oncol Biol* 2017;98:1116-1123.
 28. Carroll RJ, Ruppert D, Stefanski LA, Crainiceanu CM. Measurement Error in Nonlinear Models: A Modern Perspective. 2nd ed. London, UK: Chapman & Hall; 2006.