

University of Groningen

## Association of different iron deficiency cutoffs with adverse outcomes in chronic kidney disease

Eisenga, Michele F.; Nolte, Ilja M.; van der Meer, Peter; Bakker, Stephan J. L.; Gaillard, Carlo A. J. M.

*Published in:*  
Bmc nephrology

*DOI:*  
[10.1186/s12882-018-1021-3](https://doi.org/10.1186/s12882-018-1021-3)

**IMPORTANT NOTE: You are advised to consult the publisher's version (publisher's PDF) if you wish to cite from it. Please check the document version below.**

*Document Version*  
Publisher's PDF, also known as Version of record

*Publication date:*  
2018

[Link to publication in University of Groningen/UMCG research database](#)

*Citation for published version (APA):*

Eisenga, M. F., Nolte, I. M., van der Meer, P., Bakker, S. J. L., & Gaillard, C. A. J. M. (2018). Association of different iron deficiency cutoffs with adverse outcomes in chronic kidney disease. *Bmc nephrology*, 19, [225]. <https://doi.org/10.1186/s12882-018-1021-3>

### Copyright

Other than for strictly personal use, it is not permitted to download or to forward/distribute the text or part of it without the consent of the author(s) and/or copyright holder(s), unless the work is under an open content license (like Creative Commons).

### Take-down policy

If you believe that this document breaches copyright please contact us providing details, and we will remove access to the work immediately and investigate your claim.

*Downloaded from the University of Groningen/UMCG research database (Pure): <http://www.rug.nl/research/portal>. For technical reasons the number of authors shown on this cover page is limited to 10 maximum.*

RESEARCH ARTICLE

Open Access



# Association of different iron deficiency cutoffs with adverse outcomes in chronic kidney disease

Michele F. Eisenga<sup>1,5\*</sup>, Ilja M. Nolte<sup>2</sup>, Peter van der Meer<sup>3</sup>, Stephan J. L. Bakker<sup>1</sup> and Carlo A. J. M. Gaillard<sup>1,4</sup>

## Abstract

**Background:** Iron deficiency is highly prevalent in chronic kidney disease (CKD) patients. In clinical practice, iron deficiency is defined based on a combination of two commonly used markers, ferritin and transferrin saturation (TSAT). However, no consensus has been reached which cutoffs of these parameters should be applied to define iron deficiency. Hence, we aimed to assess prospectively which cutoffs of ferritin and TSAT performed optimally for outcomes in CKD patients.

**Methods:** We meticulously analyzed 975 CKD community dwelling patients of the Prevention of Renal and Vascular Endstage Disease prospective study based on an estimated glomerular filtration rate < 60 ml/min/1.73m<sup>2</sup>, albuminuria > 30 mg/24 h, or albumin-to-creatinine ratio ≥ 30 mg/g. Cox proportional hazard regression analyses using different sets and combinations of cutoffs of ferritin and TSAT were performed to assess prospective associations with all-cause mortality, cardiovascular mortality, and development of anemia.

**Results:** Of the included 975 CKD patients (62 ± 12 years, 64% male with an estimated glomerular filtration rate of 77 ± 23 ml/min/1.73m<sup>2</sup>), 173 CKD patients died during a median follow-up of 8.0 (interquartile range 7.5–8.7) years of which 70 from a cardiovascular cause. Furthermore, 164 CKD patients developed anemia. The highest risk for all-cause mortality (hazard ratio, 2.83; 95% confidence interval, 1.53–5.24), cardiovascular mortality (4.15; 1.78–9.66), and developing anemia (3.07; 1.69–5.57) was uniformly observed for a TSAT < 10%, independent of serum ferritin level.

**Conclusion:** In this study, we have shown that of the traditionally used markers of iron status, reduced TSAT, especially TSAT < 10%, is most strongly associated with the risk of adverse outcomes in CKD patients irrespective of serum ferritin level, suggesting that clinicians should focus more on TSAT rather than ferritin in this patient setting. Specific attention to iron levels below this cutoff seems warranted in CKD patients.

**Keywords:** Iron deficiency, CKD, Mortality, Cutoffs, Ferritin, TSAT

## Background

Iron deficiency (ID) is the most common nutritional deficiency worldwide, affecting up to 25% of the population [1–3]. A variety of causes are responsible for the depletion of iron stores, ranging from deficient dietary iron intake to increased blood loss (e.g. gastro-intestinal cancers, peptic ulcers) [4, 5]. In addition, in chronic disease

populations, due to the pro-inflammatory state that chronic diseases constitute, upregulation of serum hepcidin blocks iron absorption from the gut and iron release from the reticulo-endothelial system leading to reduced iron availability despite adequate stores [6]. Indeed, in these populations, such as chronic heart failure (CHF) and chronic kidney disease (CKD), it has been shown that ID is highly prevalent and associated with an increased risk of morbidity and mortality, independent of potential confounders, including anemia [7–9].

The definition of ID is still a matter of debate [10, 11]. ID is generally divided into absolute ID (low iron stores) and functional ID (insufficient iron supply to the bone

\* Correspondence: [m.f.eisenga@umcg.nl](mailto:m.f.eisenga@umcg.nl)

<sup>1</sup>Department of Internal Medicine, Division of Nephrology, University of Groningen, University Medical Center Groningen, Groningen, The Netherlands

<sup>5</sup>Department of Internal Medicine, Division of Nephrology, University Medical Center Groningen, P.O. Box 30.001, 9700, RB, Groningen, The Netherlands  
Full list of author information is available at the end of the article



marrow despite sufficient iron stores). Due to the existence of both absolute ID and functional ID and the absence of an unequivocal gold standard, it remains challenging to correctly identify ID [12]. Clinicians and epidemiologists alike predominantly rely on two frequently used markers, namely ferritin (for iron load) and transferrin saturation (TSAT, for iron transport availability) [13–15]. However, to date, no consensus has been reached which cutoffs of these parameters should be utilized to define absolute and functional ID per population. Except perhaps in the cardiology field where absolute ID is defined as a ferritin level < 100 µg/L, and functional ID as a TSAT < 20% accompanied by ferritin levels between 100 and 299 µg/L [7, 16]. Currently in nephrology, the Kidney Disease Improving Global Outcomes (KDIGO) committee recommends a trial of 1 to 3 months of oral iron therapy in non-dialysis CKD patients when TSAT levels are below 30% and ferritin below 500 µg/L. However, it is not known which cutoffs of ferritin and/or TSAT perform best with respect to predicting anemia, response to iron treatment or outcome [17].

Correctly defining which cutoffs of ferritin and TSAT associate with outcome would identify which patients are most at risk to develop these outcomes and thus in which patients correction of ID could potentially have the greatest benefit. Therefore, the present study was performed to define which cutoffs of serum ferritin and TSAT perform optimally for the risk of all-cause mortality, cardiovascular mortality, and risk of developing anemia in CKD patients.

## Methods

### Study population

Data was used from the Prevention of Renal and Vascular End-Stage Disease (PREVEND) study, of which details have been published elsewhere [18]. In brief, from 1997 to 1998, all inhabitants of the city of Groningen, The Netherlands, ranging between 28 and 75 years of age, received a questionnaire to complete regarding demographics, disease history, smoking status, medication use, and a vial to collect a first morning urine sample ( $n = 85,421$ ). Eventually, 40,856 subjects responded on the request (47.8%). We excluded subjects with type 1 diabetes mellitus (defined as the use of insulin) and pregnant women. After completion of the screening protocol, subjects with an urinary albumin excretion (UAE)  $\geq 10$  mg/L ( $n = 6000$ ) and a randomly selected control group with an UAE < 10 mg/L ( $n = 2592$ ) formed the baseline PREVEND cohort ( $n = 8592$ ). For current analyses, we used data from the second survey, which occurred between 2001 and 2003 ( $n = 6894$ ), due to the availability of iron status parameters at this visit. Participants visited the outpatient clinic twice and were requested to collect two consecutive 24-h urine specimens. We excluded 436 subjects due to missing values for serum ferritin or serum transferrin, resulting in the inclusion of

6458 subjects. For current analyses, we selected all patients with CKD, based on an eGFR < 60 ml/min/1.73m<sup>2</sup> or albuminuria > 30 mg/24 h or albumin-to-creatinine ratio  $\geq 30$  mg/g ( $n = 975$ , flowchart depicted in Fig. 1). As sensitivity analyses, we restricted the CKD patients group to patients with solitary an eGFR < 60 ml/min/1.73m<sup>2</sup> ( $n = 274$ ). The PREVEND study protocol was approved by the institutional medical review board and was carried out in accordance with the Declaration of Helsinki. Written informed consent was obtained from all participants.

### Measurements

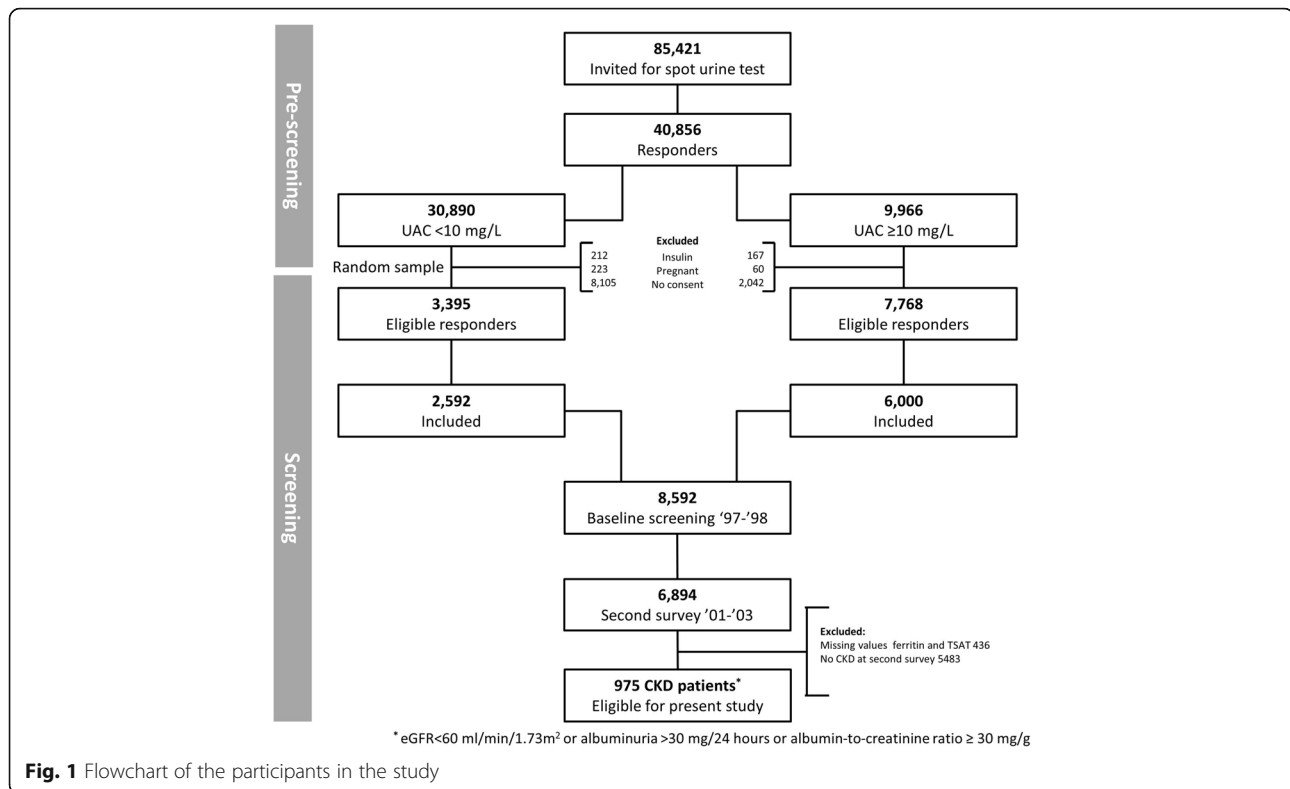
Fasting blood samples were drawn in the morning from all participants from 2001 to 2003. All hematologic measurements were measured in fresh venous blood. Aliquots of these samples were stored immediately at  $-80^{\circ}$  C until further analysis. Measurements were performed at the central laboratory of the University Medical Center Groningen. Serum creatinine was measured using an enzymatic, IDMS-traceable method on a Roche Modular analyzer (Roche Diagnostics, Mannheim, Germany). For estimating glomerular filtration rate (eGFR), the Chronic Kidney Disease Epidemiology Collaboration (CKD-EPI) was applied [19]. In the PREVEND study, serum iron (µmol/L), ferritin (µg/L), and transferrin (g/L) were measured using a colorimetric assay, immunoassay, and immunoturbidimetric assay, respectively (Roche Diagnostics).

### Main outcomes

We assessed the association of ferritin and TSAT with all-cause mortality, cardiovascular mortality and risk of developing anemia. In the PREVEND cohort, data on mortality were received through the municipal register. Cause of death was gathered by combining the number reported on the death certificate with the primary cause of death as classified by the Dutch Central Bureau of Statistics. Anemia was defined as a hemoglobin level lower than 7.5 mmol/L (12 g/dL) for women, and a hemoglobin level lower than 8.1 mmol/L (13 g/dL) for men [20]. Follow-up was performed until the 1st of January 2011 in the PREVEND study.

### Statistical analyses

Baseline variables are described by means with SD when variables are continuous and normally distributed, by medians with interquartile range when the distribution is skewed, or as numbers and corresponding percentages for categorical data. Differences between groups were assessed with a Student's t-test for normally distributed variables, a Mann-Whitney U-test for skewed variables, and a Chi-square test for categorical variables. We evaluated the presence of high ferritin levels (suggestive of iron trapping) despite a functional iron deficiency by calculating the percentage of CKD patients with ferritin



**Fig. 1** Flowchart of the participants in the study

levels higher than 500  $\mu\text{g/L}$  in combination with a TSAT < 20%. Cox regression analyses were performed to investigate the hazard rates of the individual cutoffs of ferritin and TSAT and all combinations of serum ferritin (i.e. < 20, < 50, < 100, < 200, < 300, and < 500  $\mu\text{g/L}$ ) and TSAT (i.e. < 10, < 15, < 20, < 25, and < 30%) for the respective outcomes while adjusting for age and sex. Separately, we also assessed conditional definitions as defined in the Ferinject Assessment in Patients with Iron Deficiency and Chronic Heart Failure (FAIR-HF) study, i.e. ferritin < 100  $\mu\text{g/L}$  or TSAT < 20% with ferritin < 300  $\mu\text{g/L}$ , and in the Ferinject in patients with Iron deficiency anemia and Non-Dialysis-dependent Chronic Kidney Disease (FIND-CKD) study, i.e. ferritin < 100  $\mu\text{g/L}$  or TSAT < 20% with ferritin < 200  $\mu\text{g/L}$  [7, 21]. Based on these two conditional definitions, we extended the possibilities of conditional definitions with a TSAT lower than 10% and lower than 15% in combination with a ferritin level < 200  $\mu\text{g/L}$  or < 300  $\mu\text{g/L}$ . To really allow identification of the group with the highest risk based on cutoffs, in each analysis the reference group is defined as the group above the studied cutoff, as a result the reference group in the Cox regression analyses is variable, e.g. when the combined definition of TSAT < 20% with ferritin < 300  $\mu\text{g/L}$  was analyzed, the reference group was TSAT > 20% with ferritin > 300  $\mu\text{g/L}$ . Cutoffs were chosen as rounded numbers rather than subdividing TSAT and ferritin levels in quartiles or quintiles to allow

comparison with cutoffs generally chosen in clinical practice and research studies. As sensitivity analyses, we performed subanalyses in 274 CKD patients with solitarily an eGFR lower than 60 ml/min/1.73m<sup>2</sup>, and in 717 CKD patients with data available on hs-CRP, as inflammation marker, and on serum albumin, as proxy for malnutrition. Finally, we made splines of ferritin and TSAT with all-cause mortality using restricted cubic splines based on Cox regression proportional hazard analyses. Data were analyzed using IBM SPSS software, version 23.0 (SPSS Inc., Chicago, IL), and R version 3.2.3 (Vienna, Austria).

## Results

### Patient characteristics

We included 975 CKD patients (62 ± 12 years, 64% male) with a mean eGFR of 77 ± 23 ml/min/1.73m<sup>2</sup>. Further demographics and clinical characteristics of the CKD patients, dichotomized according to survival status at the end of the follow-up are shown in Table 1. High ferritin levels of > 500  $\mu\text{g/L}$  (representing possibly iron overload) in combination with functional iron deficiency (TSAT < 20%) was present in 6 (0.6%) of the 975 CKD patients.

First, we assessed the impact of using different cutoffs for ferritin or TSAT as individual markers on the association with all-cause mortality. During a median follow-up of 8.0 (interquartile range 7.5–8.7) years, 173 CKD patients died. The highest age- and sex-adjusted risk of mortality (HR, 2.83; 95%CI 1.53–5.24) was observed for

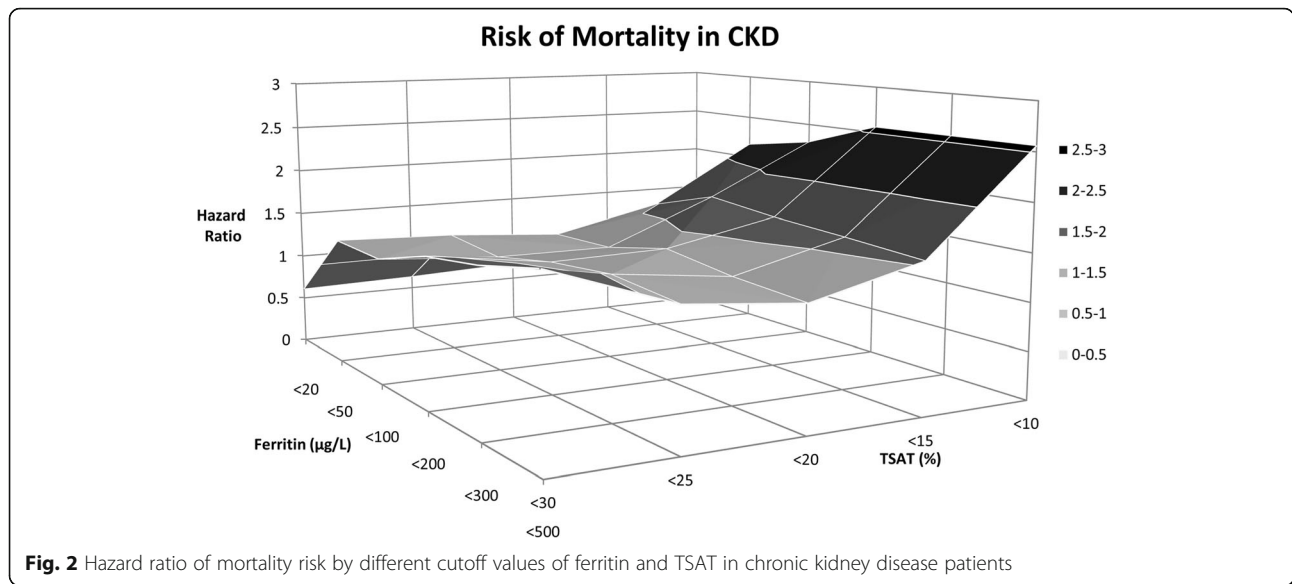
**Table 1** Baseline characteristics of 975 chronic kidney disease patients

Characteristic	TSAT (%)				Ferritin (µg/L)			
	< 10 [n = 41]	10- < 20 [n = 278]	20- < 30 [n = 414]	≥30 [n = 242]	< 50 [n = 169]	50- < 100 [n = 219]	100- < 300 [n = 453]	≥300 [n = 134]
<b>Demographics</b>								
Age, yr	60 ± 12	63 ± 12	62 ± 11	63 ± 11	59 ± 13	63 ± 11	63 ± 11	64 ± 11
Male sex – no. (%)	17 (42)	151 (54)	277 (67)	180 (74)	59 (35)	136 (62)	317 (70)	113 (84)
Race (n, %)	37 (90)	263 (95)	397 (96)	235 (97)	159 (94)	213 (97)	437 (97)	123 (92)
BMI, kg/m <sup>2</sup>	27.6 ± 4.8	29.4 ± 5.7	28.3 ± 4.3	27.4 ± 4.1	26.9 ± 5.6	27.9 ± 4.7	28.7 ± 4.6	29.5 ± 4.0
Systolic blood pressure, mmHg	135 ± 24	140 ± 22	139 ± 22	139 ± 22	133 ± 21	138 ± 21	140 ± 22	145 ± 21
Diabetes Mellitus, n (%)	6 (15)	67 (24)	69 (17)	36 (15)	23 (14)	27 (12)	99 (22)	29 (22)
Current smoking, n (%)	6 (15)	76 (28)	121 (29)	72 (30)	45 (27)	69 (32)	127 (28)	34 (25)
Alcohol use, n(%)	22 (54)	176 (63)	298 (72)	181 (75)	99 (59)	147 (67)	329 (73)	102 (76)
<b>Baseline renal function</b>								
Creatinine (µmol/L)	85 (73–113)	90 (79–104)	92 (81–107)	95 (80–106)	85 (74–99)	92 (79–107)	93 (83–108)	93 (84–109)
eGFR (ml/min/1.73m <sup>2</sup> )	78 ± 26	76 ± 23	78 ± 22	78 ± 22	81 ± 26	76 ± 23	76 ± 22	77 ± 23
<b>CKD stage</b>								
Stage I (n, %)	12 (29)	84 (30)	136 (33)	71 (29)	56 (33)	70 (32)	130 (29)	47 (35)
Stage II (n, %)	13 (32)	97 (35)	140 (34)	99 (41)	59 (35)	72 (33)	174 (38)	44 (33)
Stage III (n, %)	10 (24)	76 (27)	114 (28)	60 (25)	37 (22)	62 (28)	126 (28)	35 (26)
Stage IV/V (n, %)	1 (2)	7 (3)	3 (1)	3 (1)	2 (1)	2 (1)	7 (2)	3 (2)
Urinary albumin excretion (mg/24 h)	51 (36–139)	53 (33–140)	54 (34–111)	56 (36–112)	48 (33–104)	54 (33–107)	57 (34–128)	63 (38–121)
<b>Laboratory parameters</b>								
Hemoglobin (g/dL)	12.0 ± 2.1	13.6 ± 1.3	14.2 ± 1.2	14.4 ± 1.0	13.0 ± 0.6	13.9 ± 1.1	14.2 ± 1.2	14.5 ± 1.4
MCV (fL)	82 ± 8	89 ± 5	91 ± 4	92 ± 4	88 ± 7	91 ± 4	91 ± 4	92 ± 6
Ferritin (µg/L)	16 (8–28)	102 (56–175)	132 (72–235)	168 (101–276)	29 (17–40)	74 (62–87)	167 (130–214)	417 (343–553)
TSAT (%)	7 ± 2	16 ± 2	24 ± 3	37 ± 7	18 ± 2	24 ± 2	26 ± 9	29 ± 11
Serum iron (µmol/L)	6 ± 2	11 ± 2	16 ± 3	22 ± 4	13 ± 5	15 ± 5	16 ± 5	17 ± 6
hs-CRP (mg/dL) <sup>a</sup>	2.7 (1.1–7.9)	4.1 (1.7–7.0)	2.1 (1.1–4.1)	2.0 (1.1–3.9)	2.0 (0.9–5.1)	2.2 (1.2–5.1)	2.6 (1.3–4.7)	2.4 (1.5–4.9)
Albumin (g/L) <sup>a</sup>	42 ± 2	43 ± 3	43 ± 3	44 ± 3	43 ± 3	43 ± 3	44 ± 3	44 ± 3
Total cholesterol (mmol/L)	5.1 ± 1.2	5.5 ± 1.2	5.5 ± 1.0	5.5 ± 1.0	5.2 ± 1.2	5.5 ± 1.1	5.5 ± 1.1	5.7 ± 1.2
Glucose (mmol/L)	5.8 ± 2.1	5.9 ± 1.9	5.5 ± 1.5	5.5 ± 1.6	5.4 ± 1.8	5.3 ± 1.3	5.8 ± 1.7	5.9 ± 1.8

Normally distributed variables are shown as mean with standard deviation, whereas skewed variables are shown as medians with interquartile range. <sup>a</sup>Albumin and hs-CRP data were available in 717 patients

TSAT < 10%. Ferritin, as individual continuous marker, was not associated with increased risk of mortality. When assessing the impact of using a different combination of ferritin and TSAT on mortality, the highest risk of mortality (HR, 2.56; 95%CI 1.35–4.87) was observed for TSAT < 10% in combination with ferritin cutoffs of either < 200, 300, or 500 µg/L (Fig. 2). Full analyses are shown in Additional file 1. Using a conditional definition did not improve the observed maximal HR. In restricted cubic splines, these findings are further illustrated as the same pattern was observed for continuous variables of ferritin (Fig. 3a) and TSAT (Fig. 3b).

Second, we assessed the impact of using different cutoffs for ferritin or TSAT as individual markers on the association with cardiovascular mortality. Of the 173 deceased CKD patients, 70 were due to cardiovascular cause. The highest risk of cardiovascular mortality (HR, 4.15; 95%CI 1.78–9.66) was observed for TSAT < 10%. Ferritin, as individual continuous marker, was not associated with increased risk of cardiovascular mortality. When assessing the impact of using a different combination of ferritin and TSAT on mortality, the highest risk of cardiovascular mortality (HR, 4.17; 95%CI 1.79–9.70) was identified for TSAT < 10% in



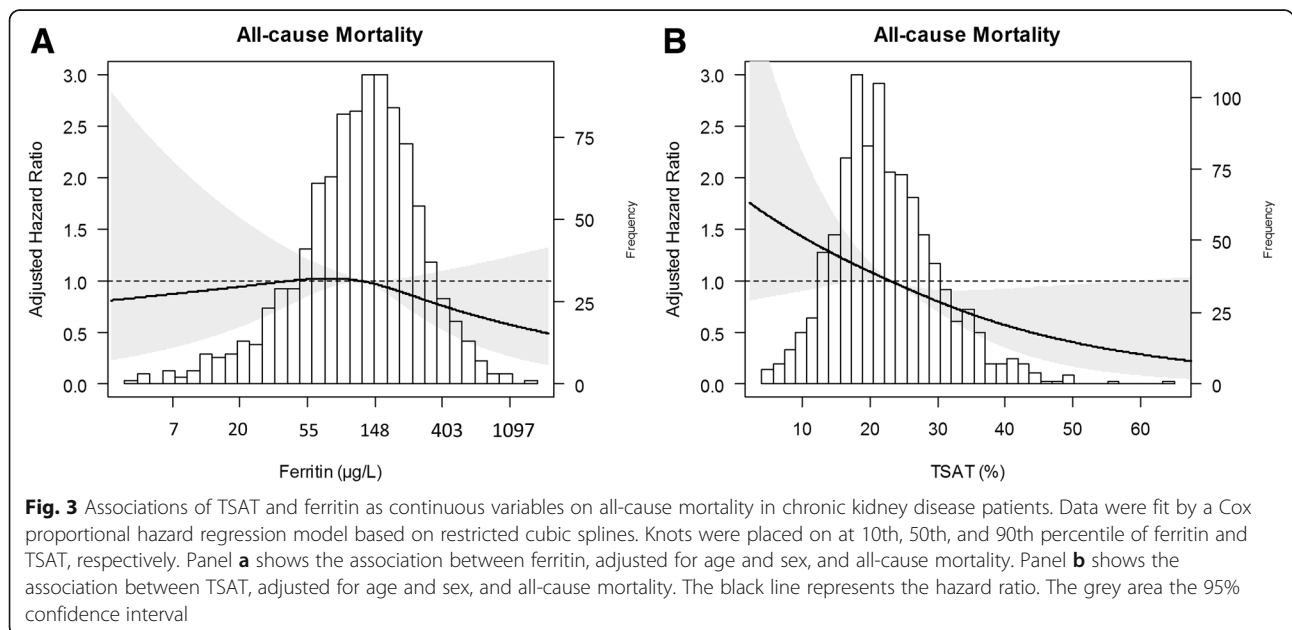
combination with a ferritin cutoff of < 100, 200, 300, or 500 µg/L (Additional file 2).

Third, we examined the impact of using different cutoffs for ferritin or TSAT as individual markers for the risk of developing anemia. During median follow-up of 6.2 (2.4–7.5) years, 164 CKD patients developed anemia. The highest risk of developing anemia (HR, 3.07; 95%CI 1.69–5.57) was observed for TSAT < 10%. Ferritin as individual continuous marker had the highest risk of anemia with a cut-off of ferritin < 20 µg/L (HR, 2.95; 95%CI 1.75–4.98). In the various combinations of ferritin with TSAT, the highest risk of developing anemia (HR, 3.07; 95%CI 1.69–5.57) was identified for TSAT < 10% in combination with a

ferritin cutoff of < 100, 200, 300, or 500 µg/L. All the other combinations were also positively associated with development of anemia albeit less significant (Additional file 3).

As sensitivity analyses, we restricted the group of 975 CKD patients to 274 CKD patients with an eGFR lower than 60 ml/min/1.73m<sup>2</sup>. We repeated the analyses of the different cutoffs of ferritin and/or TSAT with all-cause mortality, cardiovascular mortality, and risk of anemia. In these analyses, we identified the same pattern that the highest risk was particularly observed for a TSAT < 10% (Additional file 4).

Furthermore, we performed sensitivity analyses in 717 CKD patients of the included 975 CKD patients with



data available on hs-CRP and serum albumin. We repeated all the previous analyses on the impact of using different cutoffs for ferritin and/or TSAT on the association with all-cause mortality, cardiovascular mortality, and risk of anemia. In these analyses, we identified again the same pattern, i.e. that the highest risk was particularly observed for a TSAT < 10% (Additional file 5).

## Discussion

In this study, consisting of a large cohort of CKD patients, we show the impact of using different cutoffs for ferritin and/or TSAT on the association with all-cause mortality, cardiovascular mortality, and the subsequent development of anemia. Remarkably, in CKD patients the highest risk to develop adverse outcomes was uniformly observed at a low TSAT level, i.e. lower than 10%, largely independent of the level of ferritin. The current results are of importance for defining ID in CKD patients and may aid clinicians to focus on these specific cutoffs for TSAT in order to improve outcome.

To date, there is no consensus in the field of CKD which cutoffs of ferritin and TSAT should be retained to define ID. Multiple important studies in CKD patients have utilized different definitions for ID. For example, the FIND-CKD study used serum ferritin < 100 µg/L or TSAT < 20% in combination with serum ferritin of < 200 µg/L to identify patients as iron deficient, whereas Qunibi and colleagues defined ID as TSAT ≤ 25% with ferritin ≤ 300 µg/L and Fishbane and colleagues utilized TSAT ≤ 25% in combination with ferritin ≤ 200 µg/L to determine ID [21–23]. Currently, the plethora of ID definitions impedes comparability among iron studies. As a result, translation to clinical practice is difficult. Therefore, it is important to identify optimal cutoffs for CKD patients. Accordingly, in the present study, we assessed prospectively which cutoffs for ferritin and TSAT performed optimally for the association with adverse outcomes, implicating that, at least in terms of survival and development of anemia, these selected cutoffs are clinically most relevant.

Previously, few studies have evaluated the accuracy of serum ferritin and TSAT cutoffs to define ID in CKD patients in terms of sensitivity and specificity. Fishbane et al. determined in hemodialysis (HD) patients which levels of serum ferritin and TSAT were most predictive for ID. The authors concluded that in erythropoietin-responsive patients ferritin level of lower than 100 µg/L or TSAT < 18% are indicative of inadequate iron status, whereas in erythropoietin-resistant patients a serum ferritin < 300 µg/L or a TSAT < 27% should be utilized [24]. Also in HD patients, Kalantar-Zadeh et al. identified high specificity for a cutoff of serum ferritin < 200 ng/mL and high sensitivity for a TSAT < 20% [25]. As far as we know, we are the first in CKD patients to assess the performance of different

cutoffs for ferritin and/or TSAT in terms of prospective associations with adverse outcomes.

Our results identified TSAT lower than 10% to be the optimal cutoff associated with increased risk of detrimental outcomes in the CKD population. In our population of early stage CKD patients, i.e. CKD stadia one to three, the importance of adequate iron status is evident, in view of the increased hazard ratios for development of adverse outcomes. When carefully assessing the hazard ratios for all-cause mortality, cardiovascular mortality, and risk of anemia, it is clear that the highest risk is observed for TSAT < 10%, however, also for TSAT < 15% a significant increased risk in adverse outcomes is observed. It should be noted that the cardiovascular mortality risk associated with ID is markedly higher (nearly double) than the risk for all-cause mortality. For a cutoff value of TSAT < 20 and < 30% the observed hazard ratios for all-cause mortality and cardiovascular mortality are less impressive, whereas the risk for anemia decreases steadily with increasing cutoff levels. Conditional definitions as those used previously in the FAIR-HF and FIND-CKD did not improve the association with increased risk. This suggests that in CKD patients the main focus should be on low TSAT, especially TSAT lower than 10%. Based on these results, it may be speculated that failure to correct these low TSAT levels might jeopardize the survival of CKD patients.

Currently, ferritin and TSAT are the most commonly used markers in clinical setting to evaluate iron stores and iron availability. However, there are important drawbacks on the use of ferritin and TSAT as iron status parameters. Serum ferritin is an acute-phase reactant and therefore in chronic disease populations serum ferritin levels will be elevated [26, 27]. TSAT also has acute-phase reactivity as transferrin is elevated in the setting of acute inflammation which will lower TSAT when circulating iron remains constant [28]. However, other markers, such as soluble transferrin receptor, percentage hypochromic red blood cells, and reticulocyte hemoglobin content, are not readily available in clinical practice, less well studied, or not used for other reasons.

Our study has strengths and limitations. Strengths are that it comprises a large cohort of CKD patients with availability of data on iron status and that it is the first study to assess all combinations of cutoffs with respect to “hard” clinical endpoints. Limitations of the current study include its observational design, that it comprises a single center study and that measurement of iron parameters were performed at a single time point, which precludes our ability to discern the impact of changes in iron parameters over time on clinical outcomes. Furthermore, the current study is only valid for early CKD, and precludes us to discern whether similar results apply for more advanced CKD stages. Another limitation might be

that we did not adjust for several potential confounders in the different associations between ID and outcomes, however, the primary aim of this study is to study the prospective associations of ID with adverse outcomes using several cutoffs for ferritin and TSAT, not to investigate the mechanisms involved.

## Conclusion

In this study, we show that in CKD patients the highest risk for adverse outcomes with ID is observed when for the definition of ID a TSAT cutoff level lower than 10% is used. The use of the TSAT cutoff is largely independent of the level of serum ferritin. This suggests that emphasis should be placed on a low TSAT rather than ferritin levels in early stage CKD patients. Further research is needed to validate our results in terms of the effect of iron treatment on outcomes.

## Additional files

**Additional file 1: Table S1.** Different cutoff values of ferritin and TSAT, adjusted for age and sex, with respect to risk of all-cause mortality in 975 CKD patients (based on eGFR < 60 ml/min/1.73m<sup>2</sup> or albuminuria > 30 mg/24 h or albumin-to-creatinine ratio ≥ 30 mg/g). (DOCX 16 kb)

**Additional file 2: Table S2.** Association of different cutoff values of ferritin and TSAT, adjusted for age and sex, with respect to risk of cardiovascular mortality in CKD patients (based on eGFR < 60 ml/min/1.73m<sup>2</sup> or albuminuria > 30 mg/24 h or albumin-to-creatinine ratio ≥ 30 mg/g). (PDF 229 kb)

**Additional file 3: Table S3.** Association of different cutoff values of ferritin and TSAT, adjusted for age and sex, with respect to risk of anemia in CKD patients (based on eGFR < 60 ml/min/1.73m<sup>2</sup> or albuminuria > 30 mg/24 h or albumin-to-creatinine ratio ≥ 30 mg/g). (PDF 226 kb)

**Additional file 4: Table S4, Table S5, and Table S6.** Showing the association of different cutoff values of ferritin and TSAT, adjusted for age and sex, in CKD patients with eGFR < 60 ml/min/1.73m<sup>2</sup> with respect to risk of all-cause mortality, cardiovascular mortality, and anemia, respectively. (PDF 195 kb)

**Additional file 5: Table S7, Table S8, and Table S9.** Showing the association of different cutoff values of ferritin and TSAT, adjusted for age, sex, hs-CRP, and albumin, in 717 CKD patients (based on eGFR < 60 ml/min/1.73m<sup>2</sup> or albuminuria > 30 mg/24 h or albumin-to-creatinine ratio ≥ 30 mg/g) with respect to risk of all-cause mortality, cardiovascular mortality, and anemia, respectively. (PDF 255 kb)

## Abbreviations

CI: Confidence interval; CKD: Chronic kidney disease; CKD-EPI: Chronic Kidney Disease Epidemiology Collaboration; eGFR: Estimated glomerular filtration rate; HD: Hemodialysis; HR: Hazard ratio; ID: Iron deficiency; SD: Standard deviation; TSAT: Transferrin saturation; UAE: Urinary albumin excretion

## Availability of data and materials

The dataset used and analyzed during the current study are available from the corresponding author on reasonable request.

## Authors' contributions

MFE performed statistical analysis, prepared tables and figures, and designed and drafted the manuscript; IMN performed statistical analysis and interpreted the data; PvdM was responsible for data acquisition and interpreted the data; SJLB was responsible for data acquisition and interpreted the data; CAJMG designed the study and gave supervision; IMN, PvdM, SJLB and CAJMG critically revised the drafted manuscript; all authors

gave final approval of the version to be published and all authors take public responsibility and agree to be accountable for the published content.

## Ethics approval and consent to participate

The PREVEND study has been approved by the medical ethics committee of the University Medical Center Groningen. Written informed consent has been obtained from all participants.

## Consent for publication

Not applicable.

## Competing interests

The authors declare that they have no competing interests.

## Publisher's Note

Springer Nature remains neutral with regard to jurisdictional claims in published maps and institutional affiliations.

## Author details

<sup>1</sup>Department of Internal Medicine, Division of Nephrology, University of Groningen, University Medical Center Groningen, Groningen, The Netherlands. <sup>2</sup>Department of Epidemiology, University of Groningen, University Medical Center Groningen, Groningen, The Netherlands. <sup>3</sup>Department of Cardiology, University of Groningen, University Medical Center Groningen, Groningen, The Netherlands. <sup>4</sup>Department of Internal Medicine and Dermatology, University of Utrecht, University Medical Center Utrecht, Utrecht, The Netherlands. <sup>5</sup>Department of Internal Medicine, Division of Nephrology, University Medical Center Groningen, P.O. Box 30.001, 9700, RB, Groningen, The Netherlands.

Received: 16 January 2018 Accepted: 28 August 2018

Published online: 12 September 2018

## References

- GBD 2015 Disease and Injury Incidence and Prevalence Collaborators. Global, regional, and national incidence, prevalence, and years lived with disability for 310 diseases and injuries, 1990–2015: a systematic analysis for the Global Burden of Disease Study 2015. *Lancet*. 2016;388(10053):1545–602.
- Milman N. Anemia—still a major health problem in many parts of the world! *Ann Hematol*. 2011;90(4):369–77.
- McLean E, Cogswell M, Egli I, Wojdyla D, de Benoist B. Worldwide prevalence of anaemia, WHO vitamin and mineral nutrition information system, 1993–2005. *Public Health Nutr*. 2009;12(4):444–54.
- Camaschella C. Iron-deficiency anemia. *N Engl J Med*. 2015;372(19):1832–43.
- Bermejo F, Garcia-Lopez S. A guide to diagnosis of iron deficiency and iron deficiency anemia in digestive diseases. *World J Gastroenterol*. 2009;15(37):4638–43.
- Young B, Zaritsky J. Hepcidin for clinicians. *Clin J Am Soc Nephrol*. 2009;4(8):1384–7.
- Anker SD, Comin Colet J, Filippatos G, Willenheimer R, Dickstein K, Drexler H, Luscher TF, Bart B, Banasiak W, Niegowska J, Kirwan BA, Mori C, von Eisenhart Rothe B, Pocock SJ, Poole-Wilson PA, Ponikowski P. FAIR-HF Trial Investigators: Ferric carboxymaltose in patients with heart failure and iron deficiency. *N Engl J Med*. 2009;361(25):2436–48.
- Maccougall IC, Bock A, Carrera F, Eckardt KU, Gaillard C, Van Wyck D, Roubert B, Cushway T, Roger SD. FIND-CKD study investigators: the FIND-CKD study—a randomized controlled trial of intravenous iron versus oral iron in non-dialysis chronic kidney disease patients: background and rationale. *Nephrol Dial Transplant*. 2014;29(4):843–50.
- Eisenga MF, Minovic I, Berger SP, Kootstra-Ros JE, van den Berg E, Riphagen IJ, Navis G, van der Meer P, Bakker SJ, Gaillard CA. Iron deficiency, anemia, and mortality in renal transplant recipients. *Transpl Int*. 2016;29(11):1176–83.
- Garcia-Casal MN, Pena-Rosas JP, Pasricha SR. Rethinking ferritin cutoffs for iron deficiency and overload. *Lancet Haematol*. 2014;1(3):e92–4.
- Eisenga MF, Bakker SJ, Gaillard CA. Definition of functional iron deficiency and intravenous iron supplementation. *Lancet Haematol*. 2016;3(11):e504. [https://doi.org/10.1016/S2352-3026\(16\)30152-1](https://doi.org/10.1016/S2352-3026(16)30152-1).
- Maccougall IC, Bircher AJ, Eckardt KU, Obrador GT, Pollock CA, Stenvinkel P, Swinkels DW, Wanner C, Weiss G, Chertow GM, Conference Participants. Iron management in chronic kidney disease: conclusions from a "kidney disease:



- improving global outcomes" (KDIGO) controversies conference. *Kidney Int.* 2016;89(1):28–39.
13. Charytan C, Levin N, Al-Saloum M, Hafeez T, Gagnon S, Van Wyck DB. Efficacy and safety of iron sucrose for iron deficiency in patients with dialysis-associated anemia: north American clinical trial. *Am J Kidney Dis.* 2001;37(2):300–7.
  14. McDonagh T, Macdougall IC. Iron therapy for the treatment of iron deficiency in chronic heart failure: intravenous or oral? *Eur J Heart Fail.* 2015; 17(3):248–62.
  15. Shepshelovich D, Rozen-Zvi B, Avni T, Gafer U, Gafer-Gvili A. Intravenous versus oral Iron supplementation for the treatment of Anemia in CKD: an updated systematic review and meta-analysis. *Am J Kidney Dis.* 2016;68(5): 677–90.
  16. Ponikowski P, van Veldhuisen DJ, Comin-Colet J, Ertl G, Komajda M, Mareev V, McDonagh T, Parkhomenko A, Tavazzi L, Levesque V, Mori C, Roubert B, Filippatos G, Ruschitzka F, Anker SD, CONFIRM-HF Investigators. Beneficial effects of long-term intravenous iron therapy with ferric carboxymaltose in patients with symptomatic heart failure and iron deficiency. *Eur Heart J.* 2015;36(11):657–68.
  17. Beard JL. Iron biology in immune function, muscle metabolism and neuronal functioning. *J Nutr.* 2001;131(2S-2):568S–79S. discussion 580S
  18. Hillege HL, Janssen WM, Bak AA, Diercks GF, Grobbee DE, Crijns HJ, Van Gilst WH, De Zeeuw D, De Jong PE. Prevalence study group: microalbuminuria is common, also in a nondiabetic, nonhypertensive population, and an independent indicator of cardiovascular risk factors and cardiovascular morbidity. *J Intern Med.* 2001;249(6):519–26.
  19. Levey AS, Stevens LA, Schmid CH, Zhang YL, Castro AF 3rd, Feldman HI, Kusek JW, Eggers P, van Lente F, Greene T, Coresh J. CKD-EPI (chronic kidney disease epidemiology collaboration): a new equation to estimate glomerular filtration rate. *Ann Intern Med.* 2009;150(9):604–12.
  20. Anonymous Nutritional anaemias. Report of a WHO scientific group. *World Health Organ Tech Rep Ser.* 1968;405:5–37.
  21. Macdougall IC, Bock AH, Carrera F, Eckardt KU, Gaillard C, Van Wyck D, Roubert B, Nolen JG, Roger SD. FIND-CKD study investigators: FIND-CKD: a randomized trial of intravenous ferric carboxymaltose versus oral iron in patients with chronic kidney disease and iron deficiency anaemia. *Nephrol Dial Transplant.* 2014;29(11):2075–84.
  22. Fishbane S, Block GA, Loram L, Neylan J, Pergola PE, Uhlig K, Chertow GM. Effects of ferric citrate in patients with nondialysis-dependent CKD and Iron deficiency Anemia. *J Am Soc Nephrol.* 2017;28(6):1851–8. <https://doi.org/10.1681/ASN.2016101053>.
  23. Qunibi WY, Martinez C, Smith M, Benjamin J, Mangione A, Roger SD. A randomized controlled trial comparing intravenous ferric carboxymaltose with oral iron for treatment of iron deficiency anaemia of non-dialysis-dependent chronic kidney disease patients. *Nephrol Dial Transplant.* 2011; 26(5):1599–607.
  24. Fishbane S, Kowalski EA, Imbriano LJ, Maesaka JK. The evaluation of iron status in hemodialysis patients. *J Am Soc Nephrol.* 1996;7(12):2654–7.
  25. Kalantar-Zadeh K, Hoffken B, Wunsch H, Fink H, Kleiner M, Luft FC. Diagnosis of iron deficiency anemia in renal failure patients during the post-erythropoietin era. *Am J Kidney Dis.* 1995;26(2):292–9.
  26. Kalantar-Zadeh K, Kalantar-Zadeh K, Lee GH. The fascinating but deceptive ferritin: to measure it or not to measure it in chronic kidney disease? *Clin J Am Soc Nephrol.* 2006;1(Suppl 1):S9–18.
  27. Zandman-Goddard G, Shoenfeld Y. Ferritin in autoimmune diseases. *Autoimmun Rev.* 2007;6(7):457–63.
  28. Wish JB. Assessing iron status: beyond serum ferritin and transferrin saturation. *Clin J Am Soc Nephrol.* 2006;1(Suppl 1):S4–8.

**Ready to submit your research? Choose BMC and benefit from:**

- fast, convenient online submission
- thorough peer review by experienced researchers in your field
- rapid publication on acceptance
- support for research data, including large and complex data types
- gold Open Access which fosters wider collaboration and increased citations
- maximum visibility for your research: over 100M website views per year

**At BMC, research is always in progress.**

Learn more [biomedcentral.com/submissions](https://biomedcentral.com/submissions)

