

University of Groningen

## Evolution of circuits regulating pleasure and happiness with the habenula in control

Loonen, Anton J M; Ivanova, Svetlana A

*Published in:*  
Cns spectrums

*DOI:*  
[10.1017/S1092852917000748](https://doi.org/10.1017/S1092852917000748)

**IMPORTANT NOTE: You are advised to consult the publisher's version (publisher's PDF) if you wish to cite from it. Please check the document version below.**

*Document Version*  
Publisher's PDF, also known as Version of record

*Publication date:*  
2017

[Link to publication in University of Groningen/UMCG research database](#)

*Citation for published version (APA):*

Loonen, A. J. M., & Ivanova, S. A. (2017). Evolution of circuits regulating pleasure and happiness with the habenula in control. *Cns spectrums*, 1-6. <https://doi.org/10.1017/S1092852917000748>

**Copyright**

Other than for strictly personal use, it is not permitted to download or to forward/distribute the text or part of it without the consent of the author(s) and/or copyright holder(s), unless the work is under an open content license (like Creative Commons).

**Take-down policy**

If you believe that this document breaches copyright please contact us providing details, and we will remove access to the work immediately and investigate your claim.

*Downloaded from the University of Groningen/UMCG research database (Pure): <http://www.rug.nl/research/portal>. For technical reasons the number of authors shown on this cover page is limited to 10 maximum.*

# Evolution of circuits regulating pleasure and happiness with the habenula in control

Anton J. M. Loonen,<sup>1,2\*</sup> and Svetlana A. Ivanova<sup>3,4</sup>

<sup>1</sup> Groningen Research Institute of Pharmacy, Unit of Pharmacotherapy, Pharmacoepidemiology, and Pharmacoeconomics, University of Groningen, Groningen, the Netherlands

<sup>2</sup> Mental Health Institute GGZ Westelijk Noord-Brabant, Bergen op Zoom, the Netherlands

<sup>3</sup> Mental Health Research Institute, Tomsk National Research Medical Center of the Russian Academy of Sciences, Russian Federation

<sup>4</sup> Department of Ecology and Basic Safety, National Research Tomsk Polytechnic University, Tomsk, Russian Federation

The habenula, which in humans is a small nuclear complex within the epithalamus, plays an essential role in regulating the intensity of reward-seeking and adversity-avoiding behavior in all vertebrate ancestors by regulating the activity of ascending midbrain monoaminergic tracts. In lampreys, considered to possess a brain comparable to humans' earliest evolutionary vertebrate ancestor, the activity of the lateral habenula is controlled by a subset of glutamatergic neurons of the animal's pallidum (habenula-projecting globus pallidus) that inhibit reward-seeking behavior when this conduct is not successful enough. The pathophysiological roles of the habenula and habenula-projecting globus pallidus in humans have hardly been studied, which is probably due to insufficient resolution of common neuroimaging techniques. Their dysregulation may, however, play an essential role in the pathogenesis of mood and stress disorders and addiction.

Received 7 August 2017; Accepted 8 September 2017

**Key words:** Habenula, amygdala, substance-related and addictive disorders, mood disorders, stress disorders.

## Introduction

Many psychologists and psychiatrists believe that humans are the only animals who can become depressed. Although humans have two large cerebral hemispheres covered with an extensive cerebral cortex, emotions are regulated by brain structures that were already present in our earliest vertebrate ancestors about 560 million years ago. We suggest that dysfunction of these ancient brain structures is the primary cause of mood, anxiety, and stress disorders.<sup>1,2</sup> Of special interest in this regard is the habenula (Figure 1), because this structure regulates the intensity of appetitive-searching and adversity-avoiding behavior. This small nuclear complex, measuring about 20–30 cubic millimeters in each hemisphere,<sup>3</sup> which was well conserved during the evolution of vertebrates,<sup>4,5</sup> can only be studied with high-resolution functional magnetic resonance imaging techniques,<sup>3</sup> and has hitherto not received proper attention in functional neuroimaging studies.

The starting point for the development of our model was the idea that behavior can be considered as a mechanism by which organisms adapt to the ever-changing circumstances within their biosphere: the capacity to obtain food or procreative opportunities and the ability to escape from dangers is shown by all free-moving animals. The competence to show appetitive-searching (reward-seeking) and adversity-avoiding (misery-fleeing) activity must therefore have been present in our earliest evolutionary vertebrate ancestors living about 560 million years ago, and their brains, which are comparable with the modern lamprey's cerebrum, and lack the human cerebral cortex, must have been capable of regulating these behaviors.<sup>4,5</sup> Yet the question arises as to whether or not the human cerebral cortex nevertheless initiates and controls reward-seeking and misery-fleeing behavior. For this reason, it is of interest to study the evolutionary development of the brain in vertebrates.<sup>1,4,5</sup> This cannot be accomplished by studying the fossil remains of these ancestors, but we can use the idea that during several stages of evolution the development of some representatives of the relevant phases stopped. Current representatives of these animals are believed to have essentially

\* Address for correspondence: Anton J.M. Loonen, Groningen Research Institute of Pharmacy, Antonius Deusinglaan 1, 9713AV Groningen, Netherlands. (Email: [a.j.m.loonen@rug.nl](mailto:a.j.m.loonen@rug.nl))

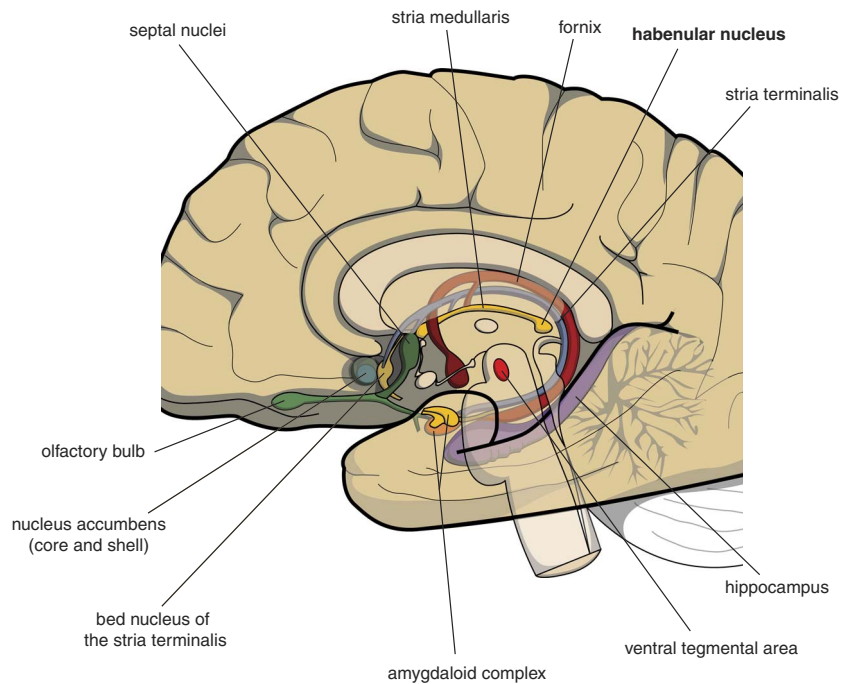


FIGURE 1. Mesial view on the right cerebral hemisphere (original figure).

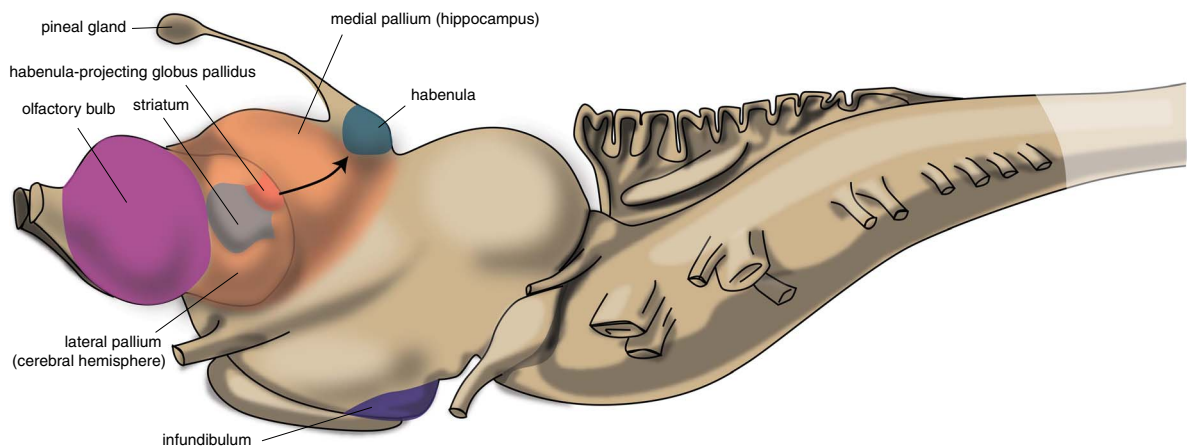


FIGURE 2. Position of striatum and habenula-projecting globus pallidus in the lamprey (adapted from Stephenson-Jones *et al.*<sup>9</sup>).

the same appearance as the animals living several hundred million years ago. Hence, the brains of lampreys, sharks, lungfish, frogs, turtles, opossums, rats, and monkeys correspond to the brains of our human ancestors from about 560 million years ago until the present day.<sup>6</sup>

### The First Vertebrates

The first vertebrates had a brain comparable to the modern lamprey. The brain of the first vertebrates already had a primitive hemisphere, but this was small and insignificant. Next to this hemisphere, the lamprey's forebrain also includes a medial pallium (cortical tissue),

which finally gave rise to the human hippocampus (Figure 2). In humans, motor activity is initiated and controlled by the cerebral cortex, but this does not appear to be the case in the lamprey. The subpallium of the lamprey contains an extrapyramidal system, which has a similar composition and organization to its human subcortical equivalent but which directs motor centers within the lower brain, controlling motor behavior from there.<sup>7</sup> Similar to the human system, the proximal part of this lamprey extrapyramidal equivalent is termed the "striatum," and the distal area connected with the motor centers is called the "pallidum." The activity of the striatum is regulated by dopaminergic neurons

originating within the animal's midbrain, which is also comparable with the human extrapyramidal system.<sup>8</sup> The activity of these dopaminergic neurons, as well as that of adrenergic and serotonergic centers within the upper brainstem are, in turn, regulated by the habenula (Hb). The activity of this motor control system is influenced by a specific nucleus termed the "habenula-projecting globus pallidum" (GPh). The GPh controls the activity of the extrapyramidal system by affecting the activity of midbrain dopaminergic neurons;<sup>7,9</sup> it inhibits an animal's behavior when motor activity is not rewarding.

### The First Land Animals

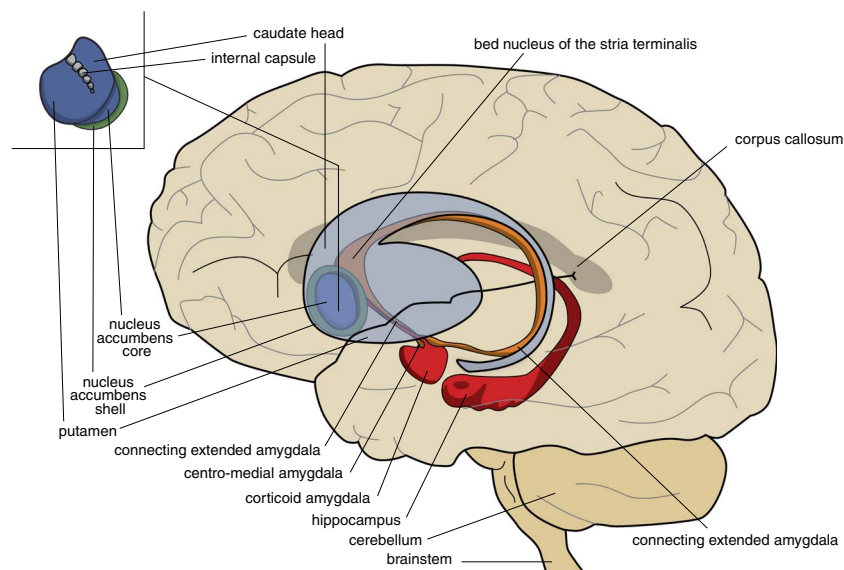
A later stage of development is represented by animals with a brain comparable to that of frogs. In our amphibian-like ancestors, the subpallium of the lamprey was maintained as the extended amygdala, and a new striatopallidum had developed as a starting point for the human extrapyramidal system. The amphibian-like pallium did not at that point have the same function as the human cerebral cortex. The ventral and ventrolateral parts of this pallium were later included into the corticoid amygdala, and the dorsolateral (largely) and medial parts into the hippocampus (Figure 3). The human amygdaloid complex can be neuroanatomically divided into the "deep nuclei" and "superficial nuclei," which have cortex-like cell types and "remaining" or "extended amygdalar nuclei," deriving from the lamprey striatopallidum.<sup>10,11</sup> The bed nucleus of the stria terminalis represents the lamprey's pallidum and may contain the amphibian GPh.<sup>1,5</sup>

### New Cerebral Capacities of Mammals

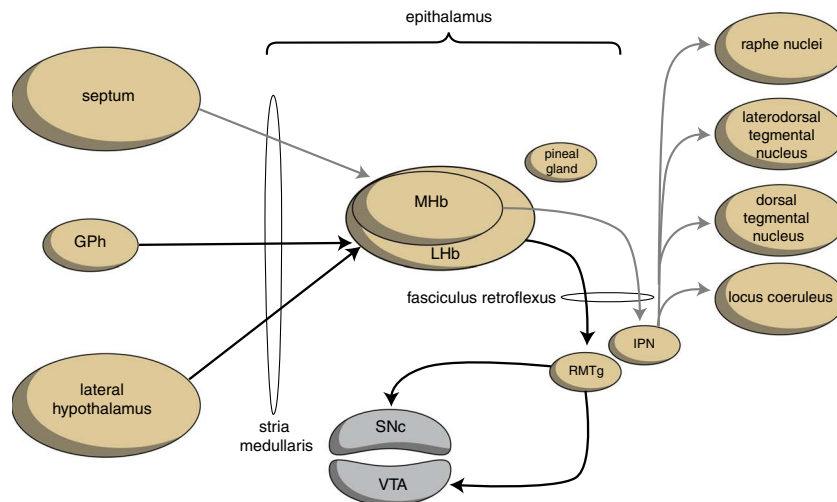
Primitive reptiles with a turtle-like brain precede more developed reptiles and birds on the one hand and mammals on the other. In our mammalian ancestors, the cerebral neocortex and dorsal thalamus gradually developed into its current human form,<sup>12,13</sup> and, parallel to the expansion of the cerebral cortex, a dorsal extrapyramidal circuitry evolved in modular fashion.<sup>7</sup> These cortico-striato-thalamo-cortical circuits serve to correct the intensity of the intracortical stimulation of the output-generating frontal cortex.<sup>8</sup> Especially noteworthy are the extrapyramidal circuits, including the most ancient ventral part of the striatum, the nucleus accumbens, regulating motivation to show reward-seeking (core part) and misery-fleeing (shell part) behavior.

### The Connectivity of the Habenula

The output structures of the human habenuloid complex are highly similar to the situation in the lamprey.<sup>4</sup> Information encoded by the lateral habenula (LHb) and the medial habenula (MHb) is transmitted through the fasciculus retroflexus (FR) axon bundle to several midbrain monoaminergic nuclei.<sup>3,14</sup> The majority of the output, however, is given to two specific midbrain areas: the rostromedial tegmental nucleus (RMTg) and the interpeduncular nucleus (IPN) (Figure 4). The RMTg is a GABAergic midbrain nucleus that inhibits the activity of the dopaminergic neurons of the VTA and SNc.<sup>3</sup> The IPN is a singular, unpaired structure located at the ventral midline of the midbrain with widespread



**FIGURE 3.** Position of the ancestor's endbrain within the human brain (adapted from Loonen and Ivanova<sup>1</sup> and Loonen *et al.*<sup>29</sup>). Corticoid amygdala and hippocampus derive from our first vertebrate ancestors' pallium (lamprey-like telencephalon) and extended amygdala (centromedial amygdala, the bed nucleus of the stria terminalis, and their connecting parts) from this ancestor's striatopallidum. The nucleus accumbens derives from our amphibian-like ancestor's striatum.



**FIGURE 4.** Simplified scheme showing the connectivity of the medial and lateral habenula (adapted from Hikosaka<sup>14</sup> and Loonen *et al.*<sup>29</sup>). GPh = habenula-projecting pallidum; IPN = interpeduncular nucleus; LHb = lateral habenula; MHb = medial habenula; RMTg = rostromedial tegmental nucleus; SNc = substantia nigra pars compacta; VTA = ventral tegmental area.

peptidergic ascending and descending projections.<sup>15,16</sup> The major efferent pathways originating in the IPN project to the dorsal tegmental nucleus,<sup>16</sup> the VTA<sup>15</sup> and the raphe nuclei.<sup>15,17</sup>

The Hb receives signals from the septum, hippocampus, ventral pallidum, lateral hypothalamus, globus pallidus, and other areas of the basal ganglia.<sup>3</sup> The main input to the MHb comes from the septum, in particular the medial septum and the adjacent nucleus of the diagonal band of Broca.<sup>3,5</sup> This input structure may in turn receive input from the corticoid amygdala via the hippocampus and fornix.<sup>5</sup> The LHb primarily receives glutamatergic afferents from the preoptic area, lateral hypothalamus, the globus pallidus, the anterior cingulate, and medial prefrontal cortex.<sup>5</sup> The lateral hypothalamus may in turn receive input from the corticoid and extended amygdala.<sup>5</sup>

The human habenuloid complex, therefore, is probably (at least partly) controlled by the amygdaloid complex in regulating the intensity of reward-seeking and distress-avoiding (misery-fleeing) behavior (Figure 5). The amygdala is well-known for playing an important role in selecting that sensory input that is particularly relevant and should receive priority in taking action (salience attribution).<sup>18,19</sup> The process of reward pursuing consists of at least three psychological components: learning to value (attentive salience); incentive salience or “wanting”; and experiencing pleasure resulting in “liking.”<sup>20,21</sup> The first component is believed to be addressed by the amygdala,<sup>22,23</sup> which can “learn” to appreciate sensory appetitive information within the context of external and internal circumstances and to initiate a proper response. The second component is regulated by mesocorticolimbic mechanisms,<sup>20</sup> with a central role for the nucleus accumbens (NAc).<sup>24,25</sup>

Important neural substrates for this system are dopaminergic mesolimbic and mesocortical projections coming from the ventral tegmental area.<sup>26,27</sup> The amygdala can regulate the activity of the nucleus accumbens via its connectivity with the LHb and VTA. The same is probably true for the regulation of the process of distress avoidance via its connectivity with the MHb and IPN. This connectivity may play an important role in psychotic disorders (salience dysregulation syndrome)<sup>19</sup> and addiction,<sup>3,29</sup> as well as mood and anxiety disorders.<sup>2,18,28,30</sup>

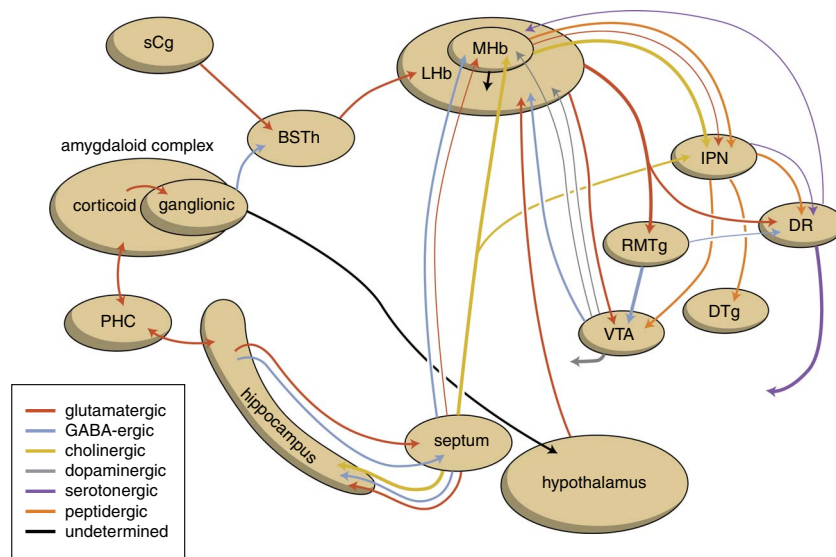
### The Role of the Habenula

Although the cerebral cortex may play an important role in determining an exact behavioral response, it is unlikely that it took over the primary role of the subcortex. The amygdaloid complex initiates reward-seeking and misery-fleeing behavior by giving output via its striatopallidal part to the hypothalamus and midbrain.<sup>5,18</sup> The hypothalamus is connected with the lateral Hb (Figure 4), which also receives input from the nuclear amygdala via the habenular-projecting part of the bed nucleus of the stria terminalis (BSTh; Figure 5).<sup>1,5</sup> The corticoid amygdala and hippocampus are also connected with the medial Hb.<sup>1,5</sup> By regulating the activity of monoaminergic centers within the upper brainstem, the Hb modulates motivation to show misery-fleeing and reward-seeking behavior. This pathway includes the fasciculus retroflexus, midbrain nuclei, and the nucleus accumbens.<sup>1</sup>

### The Habenula-Projecting Pallidum in Humans

But what happened to our ancestor’s habenula-projecting globus pallidus (GPh), which in lamprey evaluates the results of reward-seeking behavior?<sup>9</sup> Evidence exists that





**FIGURE 5.** Scheme showing the neurochemical connectivity of the amygdalo-hippocampal system to the midbrain through the habenular complex (adapted from Loonen and Ivanova<sup>1,5</sup>). BSTh = habenula-projecting part of the bed nucleus of the stria terminalis; DR = dorsal raphe nucleus; DTg = dorsal tegmental nucleus; IPN = interpeduncular nucleus; LHb = lateral habenula; MHb = medial habenula; PHC = parahippocampal cortex; RMTg = rostromedial tegmental nucleus; sCg = subgenual cingulate gyrus; VTA = ventral tegmental area.

a homolog of this structure still exists in humans.<sup>1,5</sup> Habenula-projecting glutamatergic neurons have been identified within the border region of the globus pallidus (GPb). These GPb neurons also appear to exist and have the same function in mice.<sup>31</sup> The GPb neurons may be involved in “evaluation behavior,” where the intensity is regulated by the dorsal extrapyramidal circuits—complex cognitive (reasoning) and motor (kinesia) patterns. Corresponding habenula-projecting neurons within the ventral pallidum (VPh) may be involved in evaluating the activity of the circuits including the core and shell parts of the nucleus accumbens: these include, respectively, reentry circuits regulating motivation to show reward-seeking and misery-fleeing behavior. Habenula-projecting neurons of the bed nucleus of the stria terminalis (BSTh) may play this role with respect to the emotional responses that are regulated by the amygdaloid complex. Hence, our ancestors’ GPh may have split up into three parts in humans: the GPb, VPh, and BSTh. However, neither VPh nor BSTh neurons have, until now, been proven to be true homologs of lamprey GPh neurons.

Dysfunction of these human GPh homologs is likely to play an important role in causing symptoms of several mental disorders.<sup>1</sup> Neuroplastic changes within circuitry running from the amygdalar/hippocampal complex to the striatum via the habenular complex and midbrain monoaminergic centers may take an essential position within the pathogenesis of such disorders. In our opinion, the study of the connectivity between the amygdala, pallidum, and habenula with high-resolution neuroimaging techniques is indicated.

## Conclusions

Although the cerebral cortex, with its highly developed neuronal circuitry and recurrent collateral connectivity, is by far the most likely candidate as a brain structure to process input and to estimate the exact behavioral output, vital emotions (e.g., pain, fear, happiness, and pleasure) were probably already used by our most primitive ancestors to regulate their behavior. Neuroplastic changes occurring within this ancient circuitry of the human brain that derives from the early vertebrate forebrain should therefore be considered to play an essential role in the pathogenesis of depressive disorders and in the mechanism of antidepressant treatments.<sup>28</sup>

## Disclosures

The authors hereby declare that they have no conflicts of interest to disclose.

## REFERENCES:

- Loonen AJ, Ivanova SA. Circuits regulating pleasure and happiness: evolution and role in mental disorders. *Acta Neuropsychiatr.* 2017; 1–14; doi: 10.1017/neu.2017.8.
- Loonen AJ, Ivanova SA. Commentary on “A non-reward attractor theory of depression”: A proposal to include the habenula connection. *Neurosci Biobehav Rev.* 2017; pii: S0149-7634(16)30557-7. doi: 10.1016/j.neubiorev.2017.02.007.
- Batalla A, Homberg JR, Lipina TV, et al. The role of the habenula in the transition from reward to misery in substance use and mood disorders. *Neurosci Biobehav Rev.* 2017; **80**: 276–285; doi: 10.1016/j.neubiorev.2017.03.019.
- Loonen AJ, Ivanova SA. Circuits regulating pleasure and happiness: the evolution of reward-seeking and misery-fleeing behavioral

- mechanisms in vertebrates. *Front Neurosci.* 2015; **9**: 394; doi: 10.3389/fnins.2015.00394.
5. Loonen AJ, Ivanova SA. Circuits regulating pleasure and happiness: the evolution of the amygdalar-hippocampal-habenular connectivity in vertebrates. *Front Neurosci.* 2016; **10**: 539; doi: 10.3389/fnins.2016.00539.
  6. Moreno N, González A. The non-evaginated secondary prosencephalon of vertebrates. *Front Neuroanat.* 2011; **5**: 12; doi: 10.3389/fnana.2011.00012.
  7. Robertson B, Kardamakis A, Capantini L, et al. The lamprey blueprint of the mammalian nervous system. *Prog Brain Res.* 2014; **212**: 337–349.
  8. Loonen AJ, Ivanova SA. New insights into the mechanism of drug-induced dyskinesia. *CNS Spectr.* 2013; **18**(1): 15–20.
  9. Stephenson-Jones M, Kardamakis AA, Robertson B, Grillner S. Independent circuits in the basal ganglia for the evaluation and selection of actions. *Proc Natl Acad Sci U S A.* 2013; **110**(38): E3670–E3679.
  10. Moreno N, Morona R, López JM, et al. Characterization of the bed nucleus of the stria terminalis in the forebrain of anuran amphibians. *J Comp Neurol.* 2012; **520**(2): 330–363.
  11. González A, Morona R, Moreno N, Bandín S, López JM. Identification of striatal and pallidal regions in the subpallium of anamniotes. *Brain Behav Evol.* 2014; **83**(2): 93–103.
  12. Butler AB. The evolution of the dorsal thalamus of jawed vertebrates, including mammals: cladistic analysis and a new hypothesis. *Brain Res Brain Res Rev.* 1994; **19**(1): 29–65.
  13. Butler AB. The evolution of the dorsal pallium in the telencephalon of amniotes: cladistic analysis and a new hypothesis. *Brain Res Brain Res Rev.* 1994; **19**(1): 66–101.
  14. Hikosaka O. The habenula: from stress evasion to value-based decision-making. *Nat Rev Neurosci.* 2010; **11**(7): 503–513.
  15. Klemm WR. Habenular and interpeduncularis nuclei: shared components in multiple-function networks. *Med Sci Monit.* 2004; **10**(11): RA261–RA273.
  16. Morley BJ. The interpeduncular nucleus. *Int Rev Neurobiol.* 1986; **28**: 157–182.
  17. Bianco IH, Wilson SW. The habenular nuclei: a conserved asymmetric relay station in the vertebrate brain. *Philos Trans R Soc Lond B Biol Sci.* 2009; **364**(1519): 1005–1020.
  18. Loonen AJ, Ivanova SA. Circuits regulating pleasure and happiness in major depression. *Med Hypotheses.* 2016; **87**: 14–21.
  19. Loonen AJ, Ivanova SA. Circuits regulating pleasure and happiness in schizophrenia: the neurobiological mechanism of delusions. In Shen YC, ed. *Schizophrenia Treatment: The New Facets*. Rijeka: InTech; 2016: 109–134.
  20. Berridge KC, Robinson TE, Aldridge JW. Dissecting components of reward: “liking,” “wanting,” and learning. *Curr Opin Pharmacol.* 2009; **9**(1): 65–73.
  21. Berridge KC. From prediction error to incentive salience: mesolimbic computation of reward motivation. *Eur J Neurosci.* 2012; **35**(7): 1124–1143.
  22. Balleine BW, Killcross A. Parallel incentive processing: an integrated view of amygdala function. *Trends Neurosci.* 2006; **29**(5): 272–279.
  23. Morrison SE, Salzman CD. Re-valuing the amygdala. *Curr Opin Neurobiol.* 2010; **20**(2): 221–230.
  24. Kelley AE. Ventral striatal control of appetitive motivation: role in ingestive behavior and reward-related learning. *Neurosci Biobehav Rev.* 2004; **27**(8): 765–776.
  25. Cardinal RN. Neural systems implicated in delayed and probabilistic reinforcement. *Neural Netw.* 2006; **19**(8): 1277–1301.
  26. Berridge KC, Robinson TE. What is the role of dopamine in reward: hedonic impact, reward learning, or incentive salience? *Brain Res Brain Res Rev.* 1998; **28**(3): 309–369.
  27. Bromberg-Martin ES, Matsumoto M, Hikosaka O. Dopamine in motivational control: rewarding, aversive, and alerting. *Neuron.* 2010; **68**(5): 815–834.
  28. Loonen AJ, Ivanova SA. Circuits regulating pleasure and happiness mechanisms of depression. *Front Hum Neurosci.* 2016; **10**: 571.
  29. Loonen AJ, Schellekens AF, Ivanova SA. Circuits regulating pleasure and happiness: a focus on addiction, beyond the ventral striatum. In Meiland WM, Ruby CL, eds. *Recent Advances in Drug Addiction Research and Clinical Applications*. Rijeka: InTech; 2016: 1–20.
  30. Loonen AJ, Kupka RW, Ivanova SA. Circuits regulating pleasure and happiness in bipolar disorder. *Front Neural Circuits.* 2017; **11**: 35 doi: 10.3389/fncir.2017.00035.
  31. Stephenson-Jones M, Yu K, Ahrens S, et al. A basal ganglia circuit for evaluating action outcomes. *Nature.* 2016; **539**(7628): 289–293.