



Crispin, J., & Leahy, C. P. (2019). Settlement of axially loaded pile groups in inhomogeneous soil. *DFI Journal: Journal of the Deep Foundation Institute* , 163-170. <https://doi.org/10.1080/19375247.2019.1588535>

Publisher's PDF, also known as Version of record

License (if available):
CC BY

Link to published version (if available):
[10.1080/19375247.2019.1588535](https://doi.org/10.1080/19375247.2019.1588535)

[Link to publication record in Explore Bristol Research](#)
PDF-document

This is the final published version of the article (version of record). It first appeared online via Taylor & Francis at <https://www.tandfonline.com/doi/full/10.1080/19375247.2019.1588535> . Please refer to any applicable terms of use of the publisher.

University of Bristol - Explore Bristol Research

General rights

This document is made available in accordance with publisher policies. Please cite only the published version using the reference above. Full terms of use are available:
<http://www.bristol.ac.uk/pure/about/ebr-terms>

163-170	163-170
171-176	171-176
177-182	177-182
183-188	183-188
189-194	189-194
195-200	195-200
201-206	201-206
207-212	207-212
213-218	213-218
219-224	219-224
225-230	225-230
231-236	231-236
237-242	237-242
243-248	243-248
249-254	249-254
255-260	255-260
261-266	261-266
267-272	267-272
273-278	273-278
279-284	279-284
285-290	285-290
291-296	291-296
297-302	297-302
303-308	303-308
309-314	309-314
315-320	315-320
321-326	321-326
327-332	327-332
333-338	333-338
339-344	339-344
345-350	345-350
351-356	351-356
357-362	357-362
363-368	363-368
369-374	369-374
375-380	375-380
381-386	381-386
387-392	387-392
393-398	393-398
399-404	399-404
405-410	405-410
411-416	411-416
417-422	417-422
423-428	423-428
429-434	429-434
435-440	435-440
441-446	441-446
447-452	447-452
453-458	453-458
459-464	459-464
465-470	465-470
471-476	471-476
477-482	477-482
483-488	483-488
489-494	489-494
495-500	495-500
501-506	501-506
507-512	507-512
513-518	513-518
519-524	519-524
525-530	525-530
531-536	531-536
537-542	537-542
543-548	543-548
549-554	549-554
555-560	555-560
561-566	561-566
567-572	567-572
573-578	573-578
579-584	579-584
585-590	585-590
591-596	591-596
597-602	597-602
603-608	603-608
609-614	609-614
615-620	615-620
621-626	621-626
627-632	627-632
633-638	633-638
639-644	639-644
645-650	645-650
651-656	651-656
657-662	657-662
663-668	663-668
669-674	669-674
675-680	675-680
681-686	681-686
687-692	687-692
693-698	693-698
699-704	699-704
705-710	705-710
711-716	711-716
717-722	717-722
723-728	723-728
729-734	729-734
735-740	735-740
741-746	741-746
747-752	747-752
753-758	753-758
759-764	759-764
765-770	765-770
771-776	771-776
777-782	777-782
783-788	783-788
789-794	789-794
795-800	795-800
801-806	801-806
807-812	807-812
813-818	813-818
819-824	819-824
825-830	825-830
831-836	831-836
837-842	837-842
843-848	843-848
849-854	849-854
855-860	855-860
861-866	861-866
867-872	867-872
873-878	873-878
879-884	879-884
885-890	885-890
891-896	891-896
897-902	897-902
903-908	903-908
909-914	909-914
915-920	915-920
921-926	921-926
927-932	927-932
933-938	933-938
939-944	939-944
945-950	945-950
951-956	951-956
957-962	957-962
963-968	963-968
969-974	969-974
975-980	975-980
981-986	981-986
987-992	987-992
993-998	993-998
999-1004	999-1004

Settlement of axially loaded pile groups in inhomogeneous soil

Jamie J. Crispin & Colm P. Leahy

To cite this article: Jamie J. Crispin & Colm P. Leahy (2018) Settlement of axially loaded pile groups in inhomogeneous soil, DFI Journal - The Journal of the Deep Foundations Institute, 12:3, 163-170, DOI: [10.1080/19375247.2019.1588535](https://doi.org/10.1080/19375247.2019.1588535)

To link to this article: <https://doi.org/10.1080/19375247.2019.1588535>



© 2019 The Author(s). Published by Informa UK Limited, trading as Taylor & Francis Group



Published online: 21 Mar 2019.



Submit your article to this journal [↗](#)



Article views: 183



View Crossmark data [↗](#)

Settlement of axially loaded pile groups in inhomogeneous soil

Jamie J. Crispin * and Colm P. Leahy 

Accurate prediction of settlement is key to performance-based design of pile groups. Simple methods based on physically motivated modelling assumptions, in conjunction with wisely chosen soil material constants, can accurately predict settlements without having to perform complex numerical analysis in three dimensions. Interaction factors, introduced by Poulos, simplify the analysis of pile groups through superposition of the effects of only two piles at a time. Closed-form solutions for interaction factors between piles in homogeneous soils are available in the literature, incorporating both the displacement field around a single pile and the reinforcing effect of a second pile. This paper will investigate pile groups embedded in inhomogeneous soils with shear modulus varying with a power law function of depth. The problem is formulated by considering the response of a ‘receiver’ pile carrying no load at its head, subjected to the displacement field of a loaded ‘source’ pile. A simplified approximate expression is developed using a model error correction factor that is suitable for routine design use. The performance of the proposed model at predicting experimental results is investigated. Dimensionless design charts and an illustrative example are provided.

Keywords: Pile groups; settlement; soil/structure interaction

Introduction

Extensive research has been carried out to predict the response of single piles to an applied axial head load (summarised in the Rankine lectures by Poulos 1989 and Randolph 2003, and recent books by Salgado 2008; Viggiani, Mandolini and Russo 2011 and Guo 2012). However, piles are commonly installed as part of groups, where proximity to other piles reduces the stiffness of the foundation (Fleming, Weltman, Randolph and Elson 2009). Additionally, these pile-soil-pile interaction effects can lead to an uneven distribution of load between different piles in the group, as well as change the distribution of load down the pile, transferring more load to the base (Mylonakis and Gazetas 1998). Careful consideration of these effects is required to enable efficient, performance-based design.

A variety of simple models are available to predict pile group response, such as the equivalent raft or equivalent pier methods (Poulos 2006), where the pile group is replaced by a single foundation with empirically determined dimensions to be analysed in its place. The problem can be approached more rigorously using the finite element method (e.g. Ottaviani 1975), however a full three-dimensional model is required. As an alternative, Poulos (1968) introduced the concept of interaction factors. These employ

superposition to allow the interaction between only two piles to be considered and applied to the whole group. This concept extended the available methods predicting the settlement of single piles to pile groups (Poulos 1968; Butterfield and Banerjee 1971; Banerjee and Davies 1977).

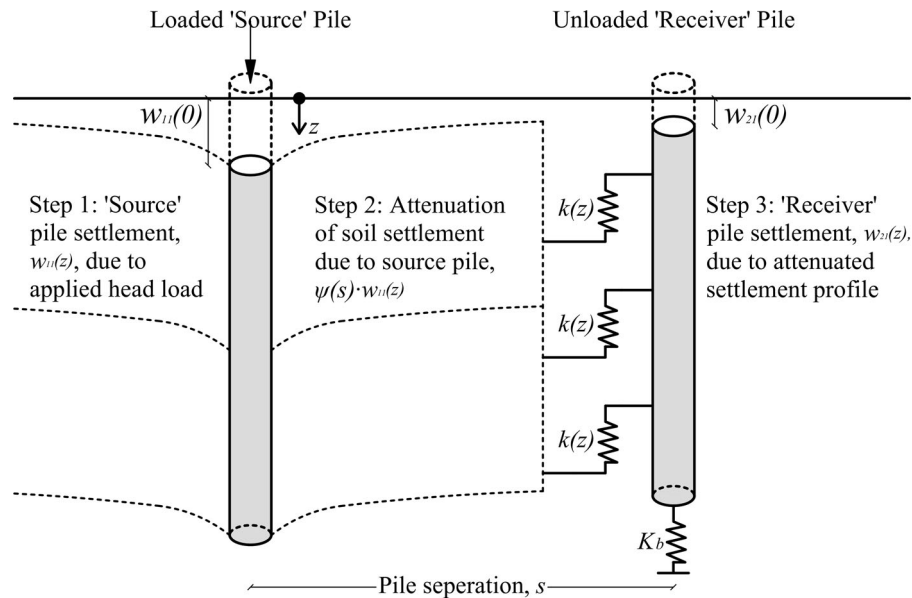
Randolph and Wroth (1979) used a simple free-field displacement function describing soil settlement with radial distance from a single pile, to calculate interaction factors for use with a simpler load-transfer model. However, this does not account for the reinforcing effect of the second pile reducing the overall settlement. Mylonakis and Gazetas (1998) proposed a new model considering the response of an unloaded ‘receiver’ pile affected by the displacement of a loaded ‘source’ pile to derive an interaction factor. A closed-form solution based on this method has been derived for piles embedded in homogeneous soils. However, soil properties, even in a single geological deposit, often vary with depth (Lumb 1966; Phoon and Kulhawy 1999). It is common practice to select a linear or more complex function of depth to describe this behaviour. This paper investigates piles embedded in inhomogeneous soils with stiffness varying according to a power-law function of depth to allow this simple model to be applied more rigorously to these situations.

Problem definition

The model proposed by Mylonakis and Gazetas (1998) is shown in Fig. 1. The analysis is split into three steps:

Department of Civil Engineering, University of Bristol, Bristol, UK

*Corresponding author, email j.crispin@bristol.ac.uk



1 Three step model for the calculation of the influence of a loaded 'source' pile on a nearby unloaded 'receiver' pile (adapted from Mylonakis and Gazetas 1998, used with permission from ICE publishing)

- Step 1: Calculate the settlement profile for the loaded source pile, $w_{11}(z)$, with depth, z .
- Step 2: Define an attenuation function, $\psi(s)$, describing soil settlement attenuation with radial distance, s , from the source pile. For simplicity the attenuation function is considered to be independent of depth.
- Step 3: Calculate the settlement profile for the receiver pile, $w_{21}(z)$, when subjected to the attenuated settlement profile of the source pile.

The problem is analysed using the Winkler model. The piles are represented by elastic columns with Young's modulus, E_p , and cross-sectional area, A . The shaft resistance due to the soil is modelled using uniformly distributed Winkler springs with stiffness $k(z)$, and the base resistance is modelled by a single spring with stiffness K_b . The behaviour of the source pile is described by the well-known governing differential equation (Scott 1981):

$$E_p A w''_{11}(z) - k(z)w_{11}(z) = 0 \quad (1)$$

The displacement field surrounding the loaded source pile due to the shaft displacement can be approximated using the concentric cylinder model (Cooke 1974; Randolph and Wroth 1978). By assuming the variation with depth of the vertical soil deformations is negligible compared to the variation with distance from the pile (i.e. the response is dominated by shear deformations), the vertical displacement is found to follow a logarithmic function with radial distance from the pile. Randolph and Wroth (1979) proposed using the attenuation function given by equation 2.

$$\psi(s) = \frac{\ln(r_m/s)}{\ln(2r_m/d)} \quad (2)$$

where d is the diameter of the source pile and r_m is an empirical radius beyond which the displacement due to

the load on the source pile is presumed to reach zero. r_m can be estimated by matching equation 2 to experimental or numerical results. Randolph and Wroth (1978) developed the following approximate expression for r_m by matching equation 2 to finite-element data:

$$r_m \approx 2.5 \rho L(1 - \nu_s) \quad (3)$$

where L is the pile length, ν_s is the Poisson's ratio of the soil and ρ is an inhomogeneity parameter given by the ratio of the average soil shear modulus to the soil shear modulus at the pile base. This equation predicts a typical range of r_m from 5–25 pile diameters (usually about 20 diameters for common pile lengths).

The attenuation of settlement due to the displacement of the pile base can be well approximated as following that due to a rigid punch on the surface of a half-space (Randolph and Wroth 1979; Mylonakis and Gazetas 1998), which decreases inversely proportionally with radial distance from the pile. This decreases at a much higher rate than the displacement field due to the shaft displacement and is negligible for almost all practical situations.

Due to the influence of the source pile, the governing differential equation of the receiver pile is given by:

$$E_p A w''_{21}(z) - k(z)w_{21}(z) = -\psi(s)k(z)w_{11}(z) \quad (4)$$

The response of the receiver pile at the pile head, $w_{21}(0)$, normalised by the response of the source pile at the pile head, $w_{11}(0)$, yields the desired interaction factor, α :

$$\alpha = w_{21}(0)/w_{11}(0) \quad (5)$$

Homogeneous soil

If the Winkler modulus is taken constant with depth, $k(z) = k$, the single pile head stiffness, K_I , is given by (Scott 1981; Mylonakis 1995; Mylonakis and Gazetas 1998; Salgado

2008; Fleming, Weltman, Randolph and Elson 2009):

$$K_1 = E_p A \lambda \frac{\Omega + \tanh(\lambda L)}{1 + \Omega \tanh(\lambda L)} \quad (6)$$

where λ is the load-transfer parameter with units Length⁻¹ and Ω is a dimensionless base stiffness constant:

$$\lambda = \sqrt{\frac{k}{E_p A}}, \quad \Omega = \frac{K_b}{E_p A \lambda} \quad (7)$$

For the most common case of two identical piles the interaction factor is calculated by solving equation 4 and applying the boundary condition of zero force at the head and a spring with modulus K_b at the base of the receiver pile (Mylonakis 1995; Mylonakis and Gazetas 1998):

$$\alpha = \psi(s)\zeta = \frac{\psi(s)}{2} \left[1 - \frac{2\lambda L(\Omega^2 - 1) + 2\Omega}{(\Omega^2 + 1)\sinh(2\lambda L) + 2\Omega \cosh(2\lambda L)} \right] \quad (8)$$

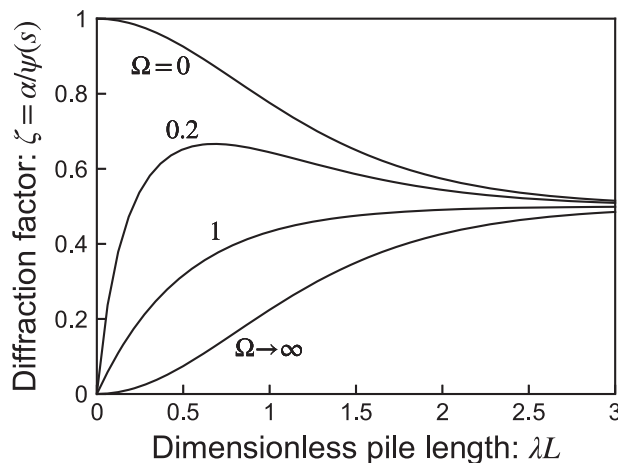
where ζ is a so-called diffraction factor representing the reinforcing effect of the receiver pile on the surrounding soil. The variation of the diffraction factor, ζ , with dimensionless pile length, λL , for different base conditions is shown in Fig. 2.

Evidently, as the pile length increases the interaction factor asymptotically approaches a common value independent of the base conditions, given by:

$$\alpha = \frac{\psi(s)}{2} \quad (9)$$

Therefore, the interaction factor is only one half of the free-field value when the receiver pile is very long.

Equation 8 has been included in foundation design textbooks (e.g. Salgado 2008; Fleming, Weltman, Randolph and Elson 2009) and has been applied in pile group design software such as PIGLET (Randolph 2006). However, it is limited to homogeneous soils.



2 Variation of diffraction factor, $\zeta = \alpha/\psi(s)$ with dimensionless pile length, λL (adapted from Mylonakis and Gazetas 1998, used with permission from ICE publishing)

Inhomogeneous soil

In inhomogeneous soils, exact Winkler solutions for the response of single piles are available for a limited number of soil stiffness variations with depth. Closed form solutions for soil stiffness varying according to a power-law function of depth are provided by Scott (1981), Guo (2012) and Crispin, Leahy and Mylonakis (2018). This paper investigates the following Winkler modulus variation:

$$k(z) = k_R \left[a + (1-a) \frac{z}{z_R} \right]^n, \quad a = \left(\frac{k_0}{k_R} \right)^{1/n} \quad (10)$$

where k_0 and k_R are the Winkler modulus at the ground surface and a reference depth, z_R , respectively, a is an inhomogeneity parameter accounting for non-zero stiffness at the ground surface, and n is an inhomogeneity exponent.

The general solution to equation 1, when $k(z)$ is described using equation 10, is given by (Crispin, Leahy and Mylonakis 2018):

$$w_{11}(z) = \left[a + (1-a) \frac{z}{z_R} \right]^{1/2} [C_{1A} I_\nu(\chi) + C_{1B} K_\nu(\chi)] \quad (11)$$

where $I_\nu(\chi)$ and $K_\nu(\chi)$ are the modified Bessel functions of the first and second kind, respectively, of order ν and argument χ , while λ_R is analogous to the parameter λ in equation 7.

$$\nu = \frac{1}{n+2},$$

$$\chi = \frac{2\lambda_R z_R}{(1-a)(n+2)} \left[a + (1-a) \frac{z}{z_R} \right]^{(n+2)/2}, \quad (12)$$

$$\lambda_R = \sqrt{\frac{k_R}{E_p A}}$$

The head stiffness of the single pile is given by (Crispin, Leahy and Mylonakis 2018):

$$K_1 = E_p A \lambda_R a^{n/2} \frac{q^{n/2} S_1 + \Omega_R S_2}{q^{n/2} S_3 + \Omega_R S_4} \quad (13)$$

where the dimensionless factors are given by:

$$S_1 = K_{\nu-1}(\chi_0) I_{\nu-1}(\chi_L) - I_{\nu-1}(\chi_0) K_{\nu-1}(\chi_L),$$

$$S_2 = K_{\nu-1}(\chi_0) I_\nu(\chi_L) + I_{\nu-1}(\chi_0) K_\nu(\chi_L),$$

$$S_3 = K_\nu(\chi_0) I_{\nu-1}(\chi_L) + I_\nu(\chi_0) K_{\nu-1}(\chi_L),$$

$$S_4 = K_\nu(\chi_0) I_\nu(\chi_L) - I_\nu(\chi_0) K_\nu(\chi_L),$$

$$\chi_0 = \frac{2\lambda_R z_R}{(1-a)(n+2)} a^{(n+2)/2}, \quad \chi_L = \frac{2\lambda_R z_R}{(1-a)(n+2)} q^{(n+2)/2},$$

$$q = \left(\frac{k(L)}{k_R} \right)^{1/n}, \quad \Omega_R = \frac{K_b}{E_p A \lambda_R} \quad (14)$$

By solving equation 4 when $k(z)$ is described using equation 10 and applying the boundary conditions at the head and base of the source and receiver pile, the following closed-form expression for the interaction factor is

obtained:

$$\alpha = \frac{\psi(s)}{2} \left[2\nu - \frac{\chi_L(\Omega_R^2 - q^n) + 2\nu q^{\frac{n}{2}} \Omega_R - \chi_L \chi_0^2 [[q^{\frac{n}{2}} S_1 + \Omega_R S_2]^2 - [q^{\frac{n}{2}} S_3 + \Omega_R S_4]^2]}{\chi_L \chi_0 [q^{\frac{n}{2}} S_1 + \Omega_R S_2] [q^{\frac{n}{2}} S_3 + \Omega_R S_4]} \right] \quad (15)$$

Similarly to equation 8, with increasing pile length the above equation tends to a common value independent of the base conditions; in this case they approach the result in equation 16, which expresses the behaviour of an infinitely long pile. This reduces to $\alpha = \nu \psi(s)$ for $a = 0$, which, in turn, reproduces equation 9 when $n = 0$.

$$\alpha = \frac{\psi(s)}{2} \left[2\nu + \chi_0 \left[\frac{K_{\nu-1}(\chi_0)}{K_{\nu}(\chi_0)} - \frac{K_{\nu}(\chi_0)}{K_{\nu-1}(\chi_0)} \right] \right] \quad (16)$$

Additionally, if the parameters in equation 10 are chosen to represent a homogeneous soil ($n = 0$ or $a = 1$), equation 15 duly reduces to equation 8.

Equation 15 is suitable for implementation in a software package. However, due to the presence of the Bessel functions, it is inconvenient for use in hand calculations. As an alternative, equation 8 could be applied using an equivalent homogeneous stiffness profile. An intuitive choice to this end is to take the average Winkler modulus, k_{av} , over the pile length. In this case, if the pile length is chosen as the reference depth for equation 10 (i.e. $z_R = L$, $k_R = k_L$, $q = 1$):

$$\frac{k_{av}}{k_L} = \rho = \left[\frac{1 - a^n}{(n+1)(1-a)} \right], \quad \lambda = \lambda_R \sqrt{\frac{k_{av}}{k_L}}, \quad (17)$$

$$\Omega = \Omega_R \sqrt{\frac{k_L}{k_{av}}}$$

Figure 3 shows the interaction factor in equation 15, as a function of dimensionless pile length for inhomogeneous soils. Equation 15 is compared to equation 8 using the parameters in equation 17. Six soil stiffness profiles are considered. The equivalent homogeneous approximation shows good agreement for short piles. However, the prediction diverges as the dimensionless length increases. Naturally, the accuracy of the approximation decreases the further $k(z)$ deviates from a constant value (i.e. by increasing n and decreasing a).

Figure 4 shows the percentage error due to using the above approximation to the full solution in equation 15, as a function of dimensionless pile length when $\Omega = 1$. The trends noted above are more evident here: the error increases with pile length and is larger the further the stiffness profile diverges from homogeneous. For a Gibson soil ($a = 0$, $n = 1$), the error is greater than 20% when $\lambda L = 0.6$ (corresponding to $L/d \approx 20$ for a pile-soil stiffness ratio of 10^3). As the approximation overestimates the interaction factor, it would lead to over-conservative designs. How the magnitude of this error translates to the predicted performance of a specific foundation depends on how much the piles in a foundation interact. The error will increase for groups with more piles and closer spacings.

In order to improve the predictions of the approximate method, a model error correction factor, η , was introduced

to correct the behaviour as the pile length increases. The factor can be calculated by taking the ratio of the asymptotic behaviour of the analytical solution in equation 16, to that of the homogeneous approximation using equation 9. An exponent depending on pile length has been included to reduce the effect of this factor when the pile is shorter (and the error is lower). The resulting expression is given in equation 18 and the factor is plotted in Fig. 5.

$$\alpha = \frac{\psi(s)}{2} \left[1 - \frac{2\lambda L(\Omega^2 - 1) + 2\Omega}{(\Omega^2 + 1) \sinh(2\lambda L) + 2\Omega \cosh(2\lambda L)} \right] \eta^{\tanh(3\lambda L/5)} \quad (18)$$

Illustrative example

A group of 4, 0.6 m diameter, 15 m long concrete piles is installed in a normally consolidated clay. The piles are arranged in a square with 1.8 m centre-to-centre spacing and connected by a rigid cap. Ground investigation data from the site showed that the soil stiffness variation with depth can be approximated using a linear profile ($n = 1$) having zero surface stiffness ($a = 0$). Back analysis of a load test on a single pile on the same site showed that at the load level of interest, the shear modulus can be modelled as increasing by 2.5 MPa/meter. The problem is shown in Fig. 6.

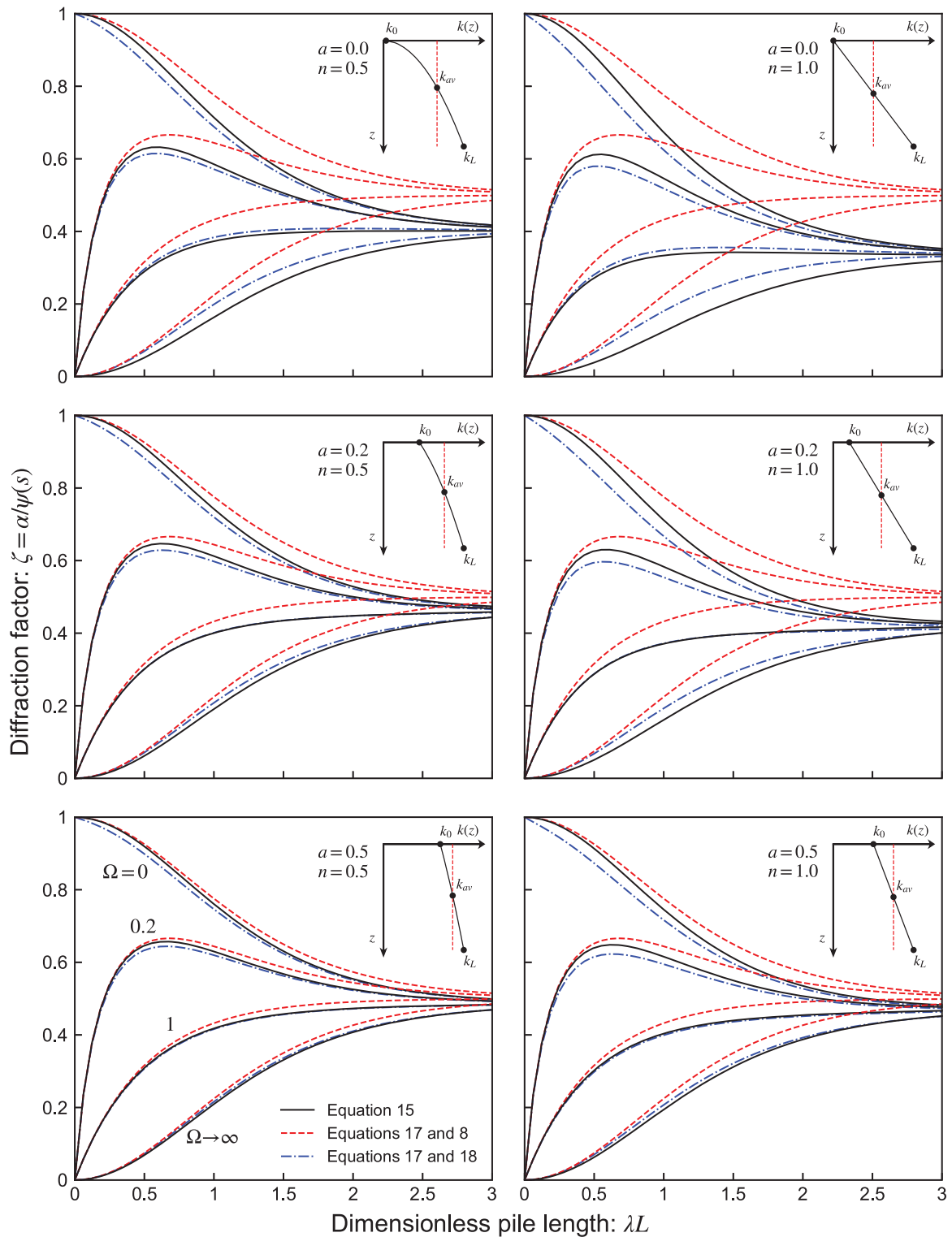
The Winkler modulus, $k(z)$, can be related to the soil shear modulus, $G_s(z)$, using the same concentric cylinder model used to approximate the attenuation function (Randolph 2003):

$$k(z) = \frac{2\pi}{\ln(2r_m/d)} G_s(z) \quad (19)$$

Employing equations 3 and 19 for this example gives $k(z) = 4.6 z$ MPa. Setting the reference depth as the pile length ($z_R = L$, $k_R = k_L$, $q = 1$) and assuming a Young's modulus of concrete of 20 GPa yields $\lambda_R z_R = 1.65$. Modelling the pile base as a rigid punch on the surface of a half-space (Randolph and Wroth 1978; Mylonakis and Gazetas 1998) yields a dimensionless base stiffness, Ω_R of 0.14.

The settlement ratio, R_s , is the ratio of the average settlement of the pile group to the settlement of a single pile at the same average load as the pile group (Poulos and Davis 1980). Calculating this ratio allows the group settlement to be estimated by multiplying it with the predicted settlement of a single representative pile. As the pile cap is rigid (all piles must settle the same amount) and the group is symmetric (each pile is influenced by the same set of piles, the same distance apart), the settlement ratio of a group of m piles can be calculated using equation 20:

$$R_s = \sum_j^m \alpha_{ij} = 1 + 2\alpha_1 + \alpha_2 \quad (20)$$

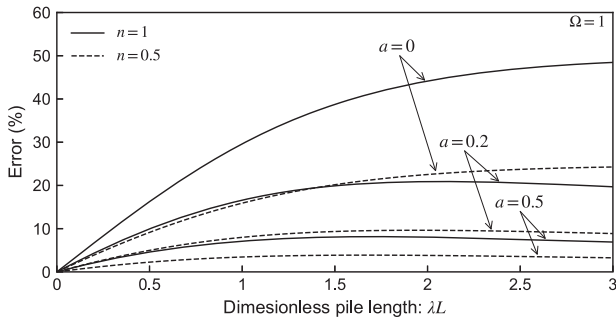


3 Variation of diffraction factor, $\zeta = \alpha/\psi(s)$, with dimensionless pile length, λL , for different degrees of soil inhomogeneity

where α_{ij} is the interaction factor derived from the response of pile i due to a load on pile j and $\alpha_{ii} = 1$. In this case there are only two interaction factors that need calculating, α_1 for the piles two piles adjacent to pile i and α_2 for the pile opposite. Table 1 shows the calculated settlement ratio using the analytical inhomogeneous solution, the

equivalent homogenous approximation and the corrected approximation. Evidently, the pile group settles over 150% the amount of a single pile under the same average load.

Note that the homogenous soil approximation underestimated R_s relative to the more accurate solution in equation 15 by 9% in this case, which could lead to a more

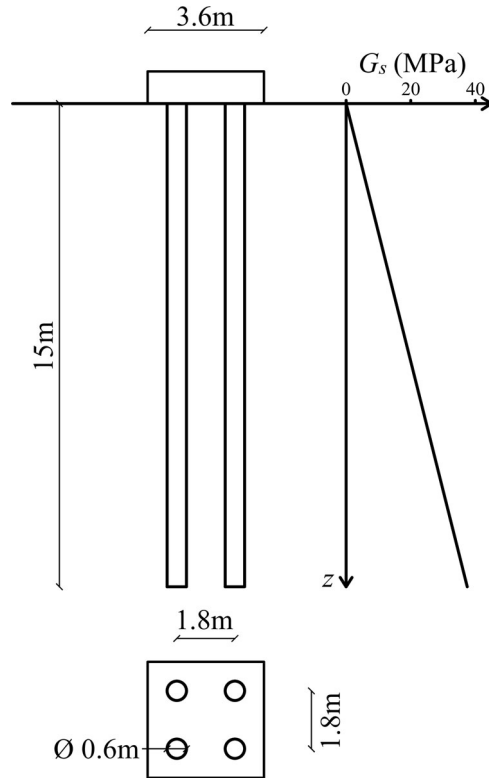


4 Percentage error in diffraction factor, $\zeta = \alpha\Psi(s)$, calculated using equation 8 and the approximation in equation 17, when compared to the analytical solution in equation 15; $\Omega_R = 1$

conservative design, particularly for larger groups likely to be encountered in practice. On the other hand, the corrected approximation overestimated R_s by less than 2%.

Comparison to experimental data

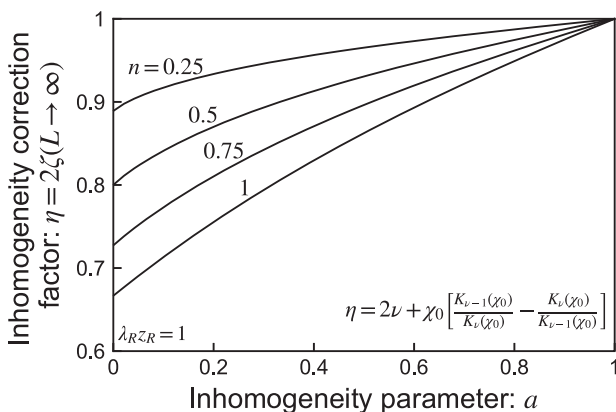
Koizumi and Ito (1967) reported the results of a load test on a group of 9 piles. The test was preceded by a test on an identical individual pile in order to isolate the interaction response of the group. The piles were 0.30 m diameter steel tubes with wall thickness 3.2 mm, embedded 5.55 m into a soft silty clay. The group is arranged in a 3×3 square with a spacing of 0.9 m and connected with a rigid cap. The test arrangement is shown in Fig. 7. The tests have previously been analysed by Poulos (1974) and Randolph and Wroth (1979). Both authors back-analysed the single pile test to derive a soil shear modulus profile with depth for use in analysing the pile group, Poulos (1974) assumed a homogeneous profile and subsequently derived a shear modulus, $G_s = 5.8$ MPa. Randolph and Wroth (1979) assumed a linear variation with depth, resulting in a shear modulus variation of the type: $G_s(z) = 7 \cdot z/L$ MPa. These were then used to predict the load distribution between the piles in the group.



6 Illustrative example dimensions

Table 1 Calculated settlement ratio

	Analytical inhomogeneous solution (equation 15)	Equivalent homogenous approximation (equations 17 and 8)	Corrected approximation (equations 17 and 18)
ζ	0.51	0.62	0.49
α_1	0.24	0.30	0.23
α_2	0.19	0.24	0.18
R_s	1.68	1.83	1.65

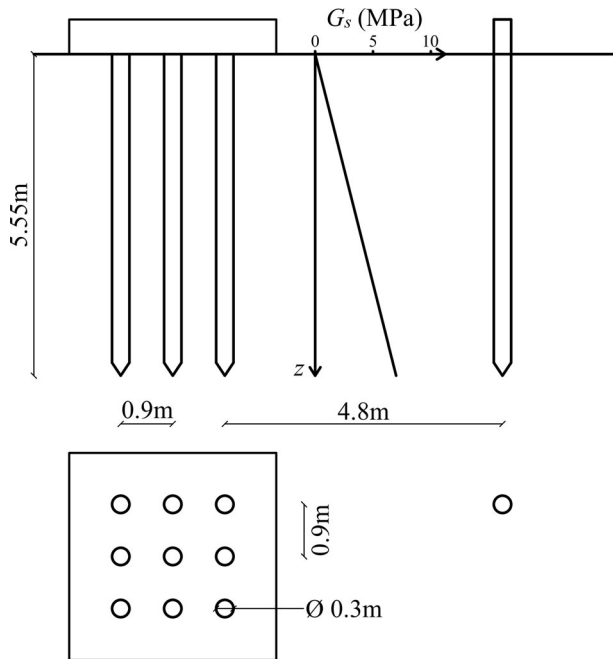


5 Variation in Inhomogeneity correction factor, $\eta = 2 \zeta(L \rightarrow \infty)$ with soil inhomogeneity parameters a and n ; z_R is chosen such that $\lambda_R z_R = 1$

Employing the linear shear modulus variation derived by Randolph and Wroth (1979), the analytical solution for inhomogeneous soils described in this paper has been used to analyse this test. Setting the reference depth to the pile length, the following parameters describe the problem: $a = 0$, $n = 1$, $q = 1$, $\lambda_R z_R = 0.83$. Using the same base stiffness assumptions as the previous example (resulting in $\Omega_R = 0.09$) and equations 2 and 15 (which yields $\zeta = 0.68$), the interaction factors between each pair of piles have been calculated. The settlement of any pile in the group, w_i , can then be calculated using equation 21 (Poulos and Davis 1980).

$$w_i = \frac{1}{K_1} \sum_j^m P_j \alpha_{ij} \tag{21}$$

where $1/K_j$ is the settlement of a single pile under unit load and P_j is the load carried by pile j . As the pile cap is rigid, the settlement of each pile is the same, therefore equation 21 has been employed to generate a set of simultaneous



7 Koizumi and Ito (1967) pile group test arrangement

Table 2 Measured and predicted load distribution in Koizumi and Ito (1967) pile test

Pile location	Pile load/Average pile load			
	Measured	This paper	Poulos (1974)	Randolph and Wroth (1979)
Corner	1.25	1.29	1.35	1.28
Mid-side	0.89	0.86	0.82	0.86
Centre	0.46	0.41	0.35	0.44

equations relating the loads in each pile to the group settlement. Due to the symmetry of the foundation, this reduces to three simultaneous equations relating to the loads in the centre pile, the corner piles and the piles in the middle of each side. By considering the total load carried by the group, these equations have been solved and the proportion of the total load carried by each pile calculated. The results are shown in Table 2 with comparison against the measured test results (Koizumi and Ito 1967) and the predictions by Poulos (1974) and Randolph and Wroth (1979).

When the load on the group was 910kN, a settlement of 7.1 mm was measured (Koizumi and Ito 1967). Inputting the results in Table 2 back into equation 21 and using equation 13 to calculate the single pile head stiffness yields an estimated settlement of 6.7 mm at this load.

Summary and conclusions

A closed-form analytical solution was derived for the interaction factor between piles in a group embedded in an inhomogeneous soil obeying a power-law variation in stiffness with depth (equation 15). The proposed solution employs the three-step model proposed by Mylonakis and

Gazetas (1998), and the Winkler assumption. The method is suitable for implementation in a design-oriented software package and design charts have been provided (Fig. 3) for use in hand calculations. The analytical solution has been compared to an approximation considering an equivalent homogeneous soil and, due to the complexity of the analytical solution, a simple model error correction factor developed to improve the accuracy of the approximate method for routine use (equation 18, Fig. 5). This correction factor reduces the discrepancy between this approximate method and the analytical solution presented here to below 10% for most practical configurations. An illustrative example of the application of interaction factors to a simple design problem has been provided. Finally, the proposed solution has been shown to have good agreement with both experimental results and other analytical methods.

Notation

Latin symbols

a	stiffness inhomogeneity parameter
A	pile cross sectional area
C_n	integration constant to be determined from the boundary conditions
d	pile diameter
E_p	pile elastic modulus
$G_s(z)$	soil shear modulus variation with depth
$I_1()$	modified Bessel function of the first kind
$K_2()$	modified Bessel function of the second kind
K_I	single pile head stiffness
K_b	pile base spring stiffness
$k(z)$	Winkler modulus variation with depth
k_0	Winkler modulus at the surface
k_{av}	average Winkler modulus over the pile length
k_L	Winkler modulus at the pile base
k_R	Winkler modulus at the reference depth
L	pile length
n	stiffness inhomogeneity exponent
P_j	load carried by pile j
q	stiffness inhomogeneity parameter
R_s	settlement ratio
r_m	'magical' radius
S_n	combination of Bessel functions
s	pile separation distance
$w_{1j}(z)$	source pile settlement profile due to applied head load (variable with depth)
$w_{2j}(z)$	receiver pile settlement profile due to load on source pile (variable with depth)
w_i	head settlement of pile i
z	depth below ground level
z_R	reference depth

Greek symbols

α	pile-soil-pile interaction factor
α_{ij}	interaction factor describing the response of pile i due to a load on pile j
ζ	diffraction factor

η	model error correction factor
λ	load transfer parameter
λ_R	load transfer parameter at reference depth
ν	order of Bessel function
ν_s	soil Poisson's ratio
ρ	inhomogeneity parameter in Randolph and Wroth (1978, 1979) theory
χ_0	argument of Bessel function at pile head
χ_L	argument of Bessel function at pile base
$\psi(s)$	free field displacement attenuation function
Ω	dimensionless base stiffness
Ω_R	dimensionless base stiffness in inhomogeneous soil

Acknowledgements

The authors would like to thank Professor George Mylonakis for his supervision and guidance throughout this project and Dr. Elia Voyagaki for her support in the preparation of this manuscript. Thanks are also due to Dr. Paul Vardanega for his support and guidance. The first author would also like to thank the Engineering and Physical Sciences Research Council for their support (grant number EP/N509619/1). No new experimental data were collected during this study.

Funding

This work was supported by Engineering and Physical Sciences Research Council [grant number EP/N509619/1].

ORCID

Jamie J. Crispin  <http://orcid.org/0000-0003-3074-8493>

Colm P. Leahy  <http://orcid.org/0000-0002-3826-0233>

References

- Banerjee, P.K. and Davies, T.G. 1977. Analysis of pile groups embedded in Gibson soil. *Proceedings, 13th ICSMFE*, Tokyo, July 11–15, Vol. 1, pp. 381–386.
- Butterfield, R. and Banerjee, P. K. 1971. The elastic analysis of compressible piles and pile groups. *Geotechnique*, **21**(1), 43–60.

- Cooke, R.W. 1974. The settlement of friction pile foundations. *Proceedings of the Conference on Tall Buildings*, Kuala Lumpur, December, pp. 7–19.
- Crispin, J.J., Leahy, C.P. and Mylonakis, G. 2018. Winkler model for axially loaded piles in inhomogeneous soil. *Geotechnique Letters*, **8**(4), 290–297. doi:10.1680/jgcle.18.00062.
- Fleming, K., Weltman, A., Randolph, M. and Elson, K. 2009. *Piling engineering*. 3rd edn. Abingdon, UK: Taylor & Francis, 398 p.
- Guo, W.D. 2012. *Theory and practice of pile foundations*. Boca Raton, FL: CRC Press, 522 p.
- Koizumi, Y. and Ito, K. 1967. Field tests with regard to pile driving and bearing capacity of piled foundations. *Soils and Foundations*, **7**(3), 30–53.
- Lumb, P. 1966. The variability of natural soils. *Canadian Geotechnical Journal*, **3**(2), 74–97.
- Mylonakis, G. 1995. *Contributions to static and seismic analysis of piles and pile-supported bridge piers*. PhD thesis, State University of New York at Buffalo, New York, NY, 325 p.
- Mylonakis, G. and Gazetas, G. 1998. Settlement and additional internal forces of grouped piles in layered soil. *Geotechnique*, **48**(1), 55–72.
- Ottaviani, M. 1975. Three-dimensional finite element analysis of vertically loaded pile groups. *Geotechnique*, **25**(2), 159–174.
- Phoon, K.-K. and Kulhawy, F.H. 1999. Characterization of geotechnical variability. *Canadian Geotechnical Journal*, **36**(4), 612–624.
- Poulos, H.G. 1968. Analysis of the settlement of pile groups. *Geotechnique*, **18**(4), 449–471.
- Poulos, H.G. 1974. Some recent developments in the theoretical analysis of pile behaviour. In: Lee I. K. (ed.). *Soil mechanics – new horizons*. London: Newnes-Butterworths, pp. 237–279.
- Poulos, H.G. 1989. Pile behaviour—theory and application. *Geotechnique*, **39**(3), 365–415.
- Poulos, H.G., 2006. Pile group settlement estimation – research to practice. *Proceedings GeoShanghai International Conference, Foundation Analysis and Design: Innovative Methods*, Shanghai, June 6–8, pp. 1–22.
- Poulos, H.G. and Davis, E.H. 1980. *Pile foundation analysis and design*. New York, NY: Wiley, 397 p.
- Randolph, M.F. 2003. Science and empiricism in pile foundation design. *Geotechnique*, **53**(10), 847–875.
- Randolph, M.F. 2006. *PIGLET – analysis and design of pile groups. User Manual*. Crawley, WA: University of Western Australia, 38 p.
- Randolph, M.F. and Wroth, C.P. 1978. Analysis of deformation of vertically loaded piles. *ASCE Journal of the Geotechnical Engineering Division*, **104**(GT12), 1465–1488.
- Randolph, M.F. and Wroth, C.P. 1979. Analysis of vertical deformation of pile groups. *Geotechnique*, **48**(1), 55–72.
- Salgado, R. 2008. *The engineering of foundations, International edition*. Singapore: McGraw-Hill, 882 p.
- Scott, R.F. 1981. *Foundation analysis*. Englewood Cliffs, NJ: Prentice-Hall, Inc., 545 p.
- Viggiani, C., Mandolini, A. and Russo, G. 2011. *Piles and pile foundations*. Boca Raton, FL: CRC Press, 272 p.