



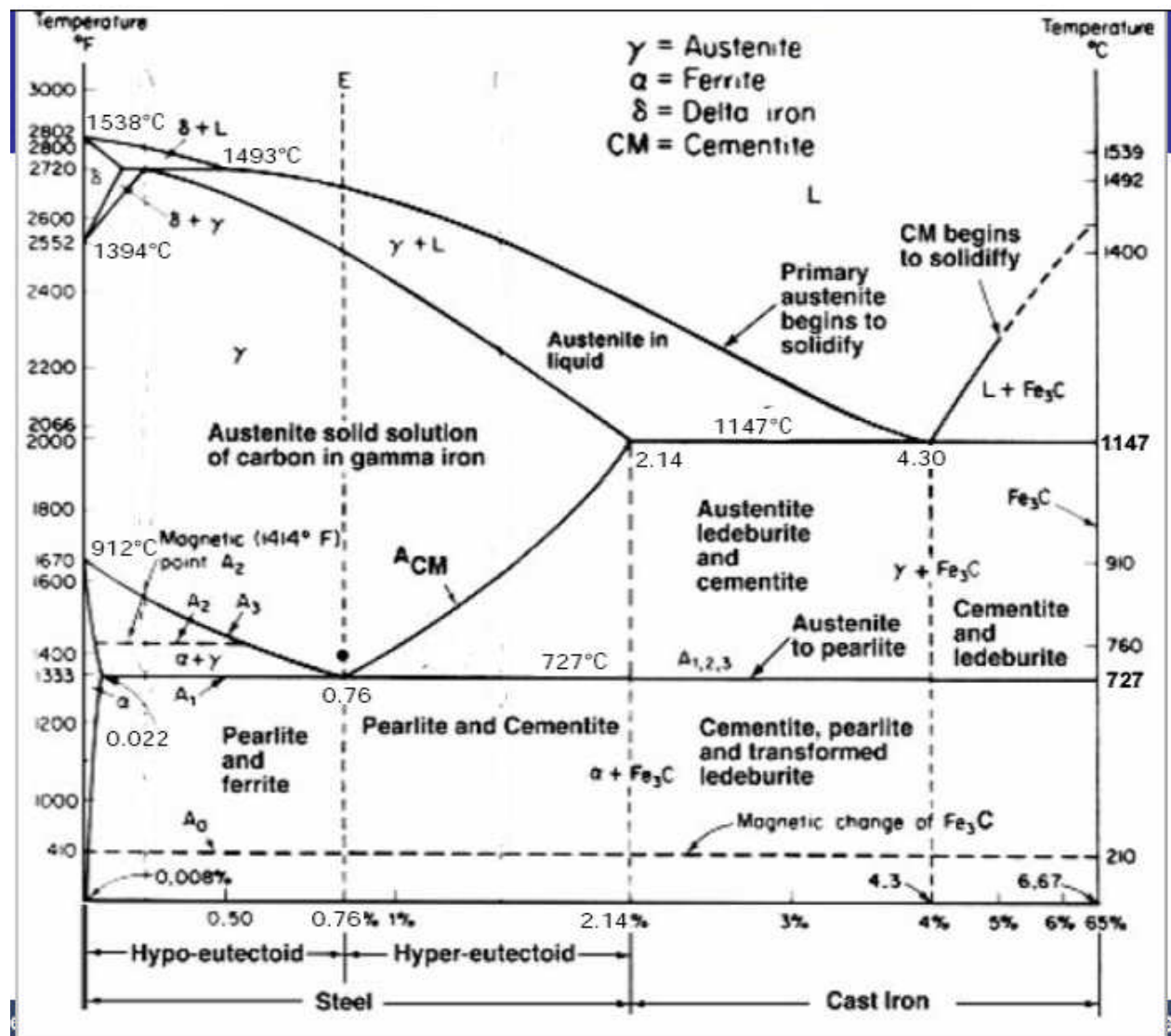
## **PREMIUM CONNECTING ROD**

MOTORCYCLE



CAPT. ENGINE TECHNOLOGY Inc.

DIAGRAM FASA





**PREMIUM CONNECTING ROD**

CAPT. No.	Vehicle Model	Part No.	Connecting Rod Spec.				Center Distance	Crank Pin Remark Spec.
			Thickness		Bore Size			
			Big End	Small End	Big End	Small End		
<b>YAMAHA (Motorcycle)</b>								
YA023	RXK	4Y2	16	16	Φ28	Φ20	100	22*54. 5*12
YA024	125	4Y2	16	16	Φ28	Φ20	100	22*54. 5*12
YA025	DTK125	4Y2	16	16	Φ28	Φ20	100	22*54. 5*12
YA026	DT175	4Y2	16	16	Φ28	Φ20	100	22*54. 5*12
YA027	LF90	48N00	11.6	15.6	Φ24.035	Φ15	84	18.035*37*8
YA028	90	48N00	11.6	15.6	Φ24.035	Φ15	84	18.035*37*8
YA029	48N	48N00	11.6	15.6	Φ24.035	Φ15	84	18.035*37*8
YA030	LB50	48N00	11.6	15.6	Φ24.035	Φ15	84	18.035*37*8
YA031	YB50	48N00	11.6	15.6	Φ24.035	Φ15	84	18.035*37*8
YA032	90	48N00	11.6	15.6	Φ24.035	Φ15	84	18.035*37*8
YA033	90	48N00	11.6	15.6	Φ24.035	Φ15	84	18.035*37*8
YA034	MJ50	48N00	11.6	15.6	Φ24.035	Φ15	84	18.035*37*8
YA035	LF90	48N00	11.6	15.6	Φ24.035	Φ15	84	18.035*42.5*8
YA036	LF90+	48N00	11.8	15.5	Φ24.035	Φ15	84	—
YA037	Y100	2JG	14	14	Φ26.035	Φ18	96	20.035*49*10S
YA038	Y100	2JG	14	14	Φ26.035	Φ18	96	20.035*49*10T
YA039	Y110	2JG	14	14	Φ26.035	Φ18	96	20.035*49*10T
YA040	ALFA	2JG	15.9	14	Φ26	Φ18	93.3	20.035*49*10T
YA041	TZR150	3RR	18	18	Φ31	Φ21	105	24*57. 5*12
YA042	TZR	3RR	18	18	Φ31	Φ21	105	24*57. 5*12
YA043	RS125	479	16	18	Φ28	Φ20	100	22*54.5*12
YA044	RS125	479	16	18	Φ28	Φ20	100	22*54. 5*12S
YA045	DF50	AT50	11.8	11.8	Φ22.035	Φ14	80	16.035*37
YA046	50	AT50	11.8	11.8	Φ22.035	Φ14	80	16.035*37
YA047	AT50	AT50	11.8	11.8	Φ22.035	Φ14	80	16.035*37
YA048	CT50	AT50	11.8	11.8	Φ22.035	Φ14	80	16.035*37
YA049	JOG	AT50	11.8	11.8	Φ22.035	Φ14	80	16.035*37
YA050	JOG50	AT50	11.8	11.8	Φ22.035	Φ14	80	16.035*37
YA051	JOGGY50	AT50	11.8	11.8	Φ22.035	Φ14	80	16.035*37
YA052	SA50	AT50	11.8	11.8	Φ22.035	Φ14	80	16.035*37
YA053	ET900	AT50	11.8	11.8	Φ22.035	Φ14	80	16.035*37
YA054	JF50	AT50	11.8	11.8	Φ22.035	Φ14	80	16.035*37S
YA055	50	AT50	11.8	11.8	Φ22.035	Φ14	80	16.035*37S

