



US010122363B1

(12) **United States Patent**
Krasowski et al.

(10) **Patent No.:** **US 10,122,363 B1**(45) **Date of Patent:** ***Nov. 6, 2018**(54) **CURRENT SOURCE LOGIC GATE**(71) Applicant: **The United States of America, as represented by the Administrator of NASA**, Washington, DC (US)(72) Inventors: **Michael J. Krasowski**, Chagrin Falls, OH (US); **Norman F. Prokop**, Shaker Heights, OH (US); **Philip G. Neudeck**, Olmsted Township, OH (US)(73) Assignee: **The United States of America as Represented by the Administrator of National Aeronautics and Space Administration**, Washington, DC (US)

(*) Notice: Subject to any disclaimer, the term of this patent is extended or adjusted under 35 U.S.C. 154(b) by 0 days.

This patent is subject to a terminal disclaimer.

(21) Appl. No.: **15/676,223**(22) Filed: **Aug. 14, 2017****Related U.S. Application Data**

(63) Continuation-in-part of application No. 15/373,689, filed on Dec. 9, 2016, now Pat. No. 9,755,645.

(60) Provisional application No. 62/266,176, filed on Dec. 11, 2015.

(51) **Int. Cl.**
H03K 19/20 (2006.01)
H03K 19/094 (2006.01)(52) **U.S. Cl.**
CPC . **H03K 19/09432** (2013.01); **H03K 19/09403** (2013.01); **H03K 19/20** (2013.01)(58) **Field of Classification Search**

CPC H03K 19/09432; H03K 19/09403; H03K 19/20

USPC 326/115
See application file for complete search history.(56) **References Cited**

U.S. PATENT DOCUMENTS

4,016,430 A * 4/1977 Kanezuka H03K 19/096
326/112
4,521,698 A * 6/1985 Taylor H03K 19/00315
326/120
5,705,940 A * 1/1998 Newman H03K 19/0952
326/112
8,072,196 B1 * 12/2011 Li G05F 1/56
323/266
2015/0280713 A1 * 10/2015 Jung H03K 19/00361
326/34

* cited by examiner

Primary Examiner — Don Le(74) *Attorney, Agent, or Firm* — Robert H. Earp, III;
William M. Johnson(57) **ABSTRACT**

A current source logic gate with depletion mode field effect transistor ("FET") transistors and resistors may include a current source, a current steering switch input stage, and a resistor divider level shifting output stage. The current source may include a transistor and a current source resistor. The current steering switch input stage may include a transistor to steer current to set an output stage bias point depending on an input logic signal state. The resistor divider level shifting output stage may include a first resistor and a second resistor to set the output stage point and produce valid output logic signal states. The transistor of the current steering switch input stage may function as a switch to provide at least two operating points.

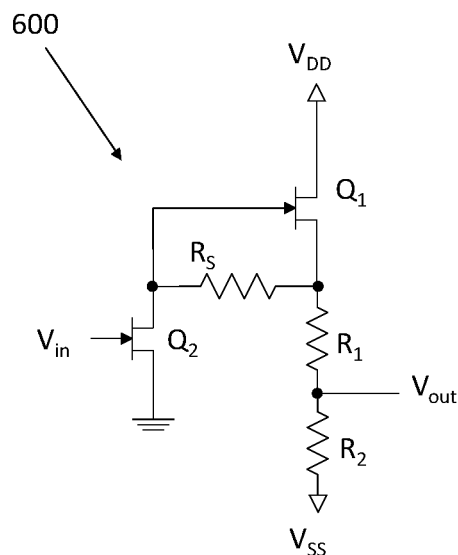
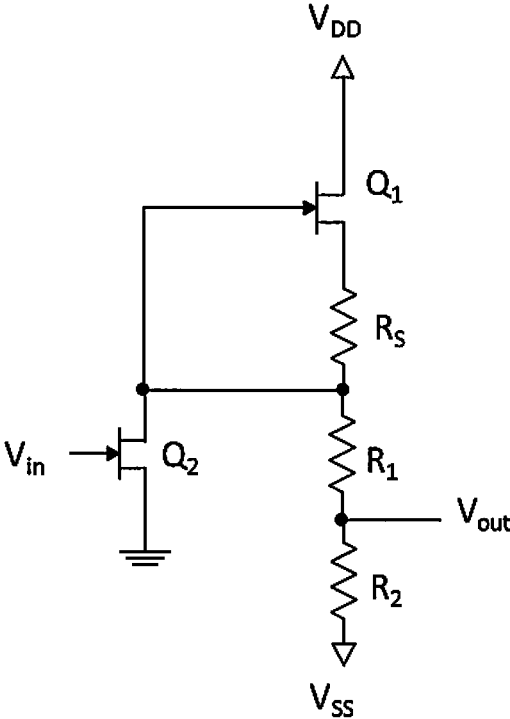
20 Claims, 7 Drawing Sheets

Fig. 1

100
↙



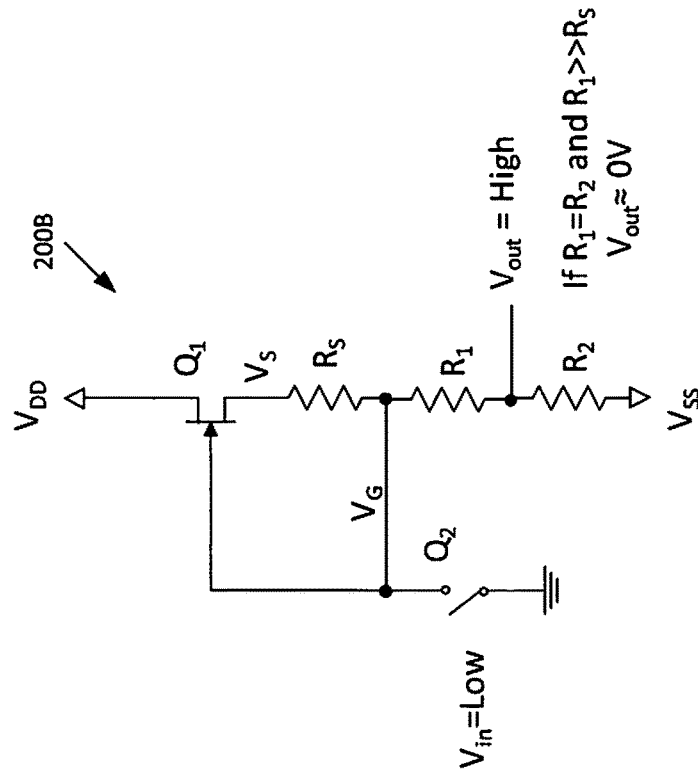


Fig. 2B

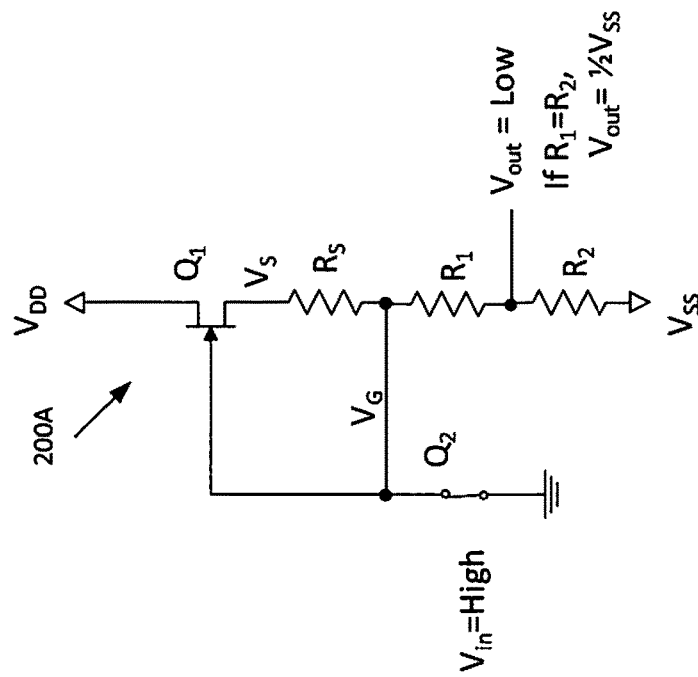


Fig. 2A

Fig. 3

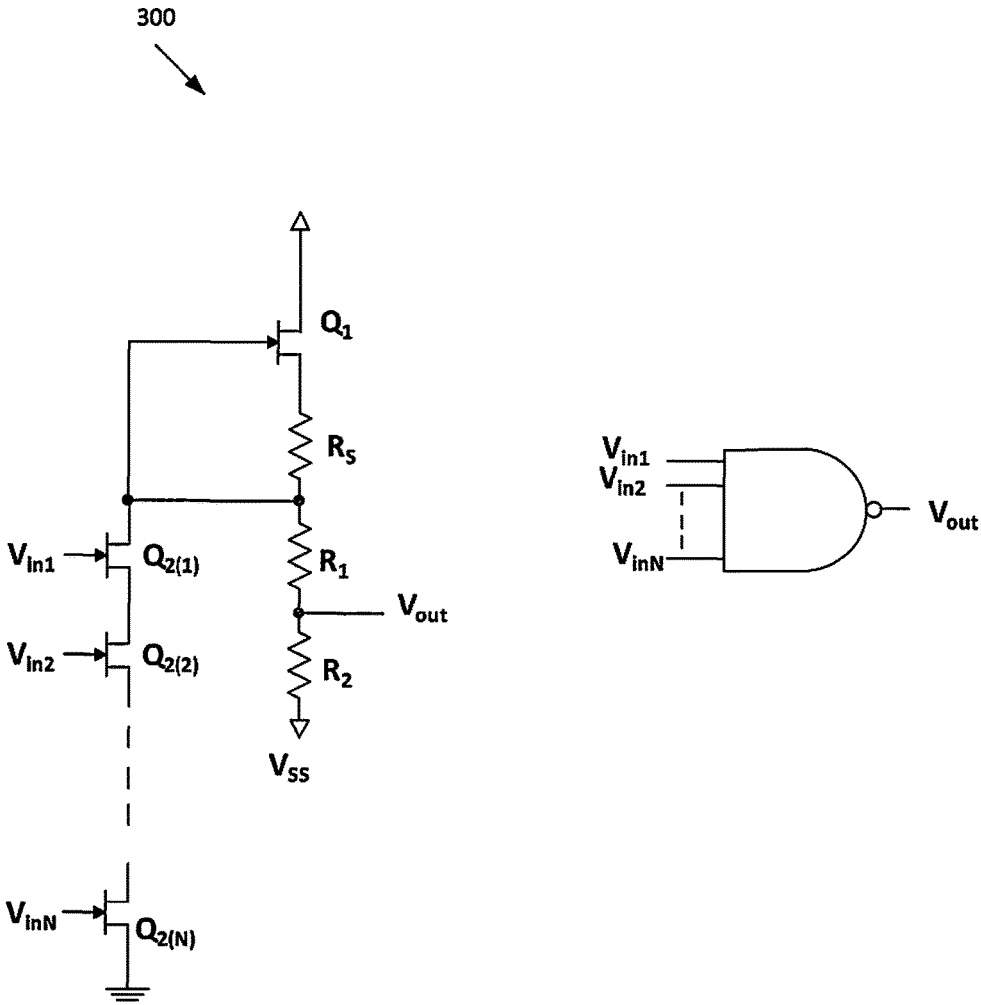
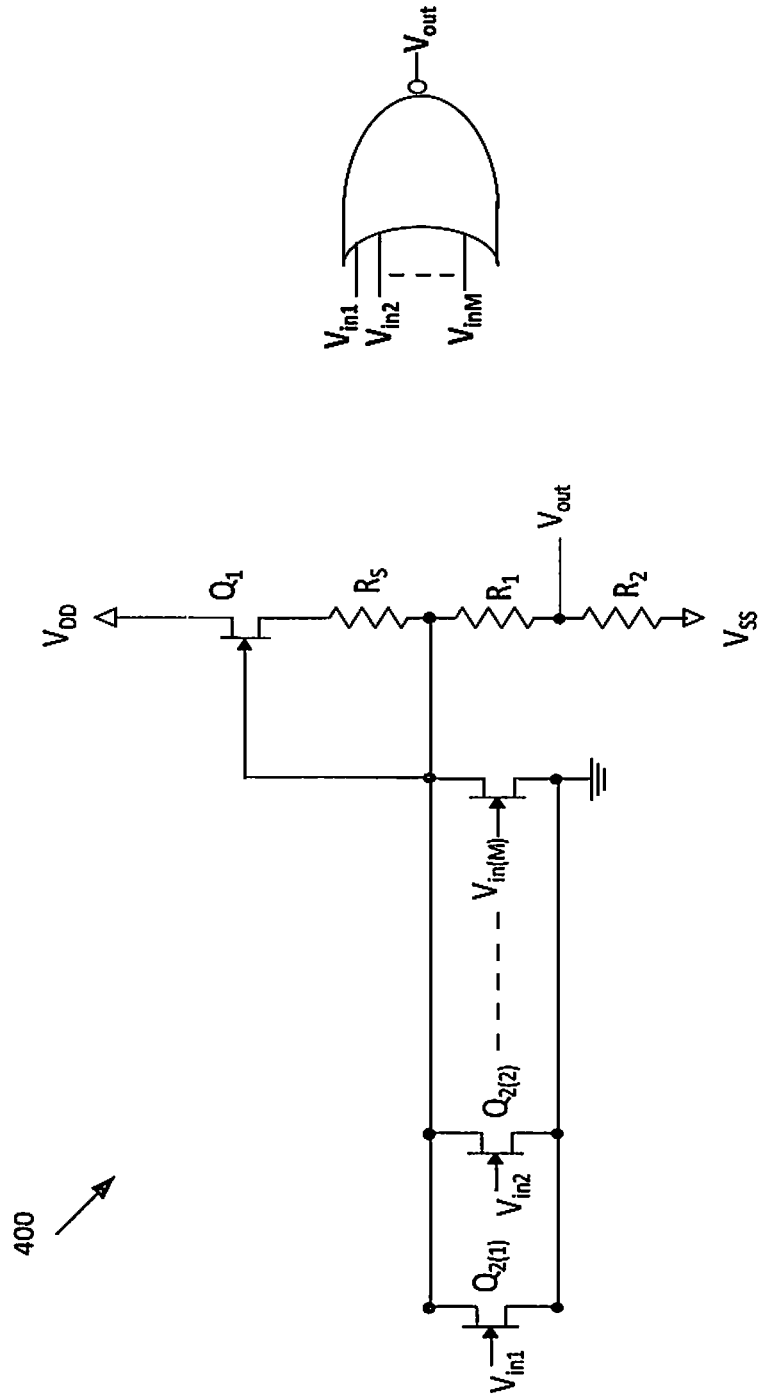


Fig. 4



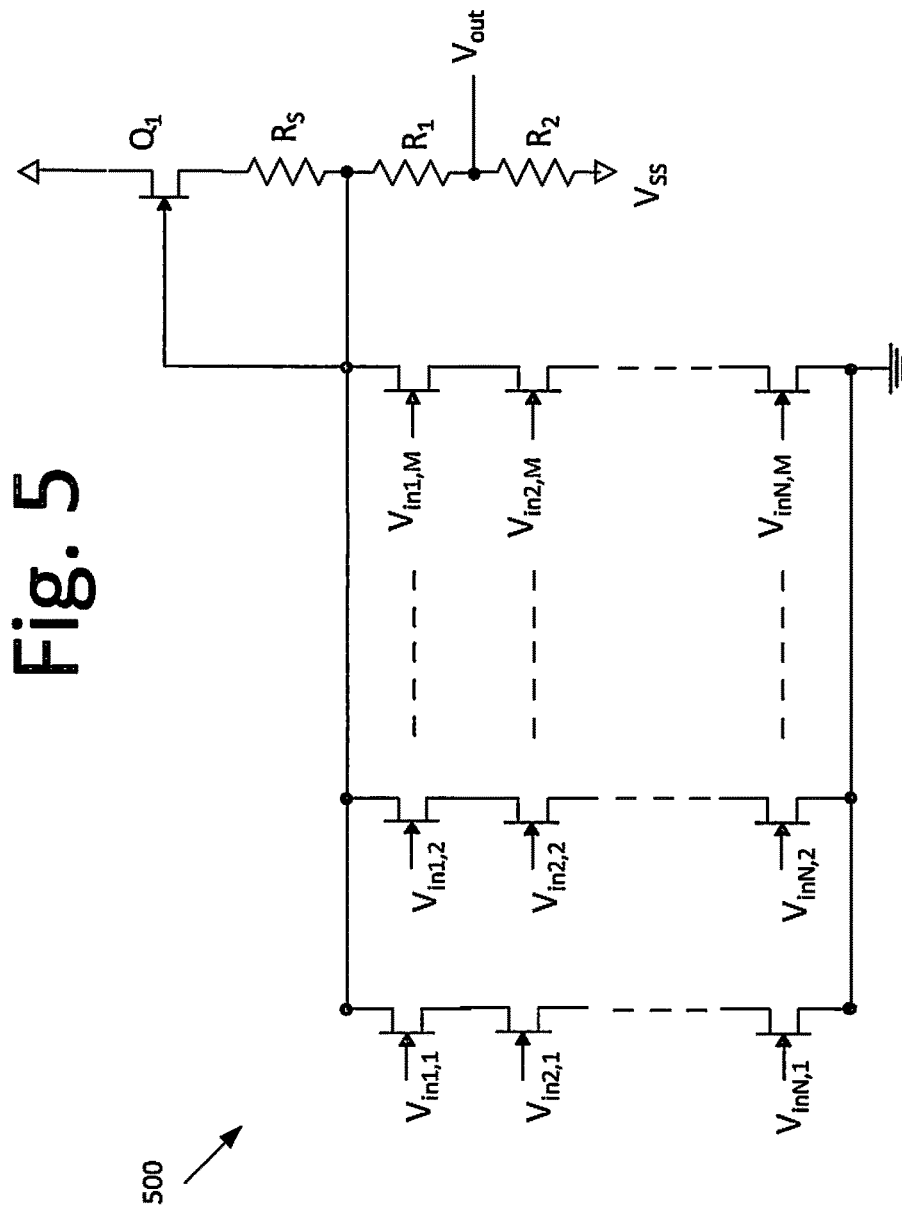
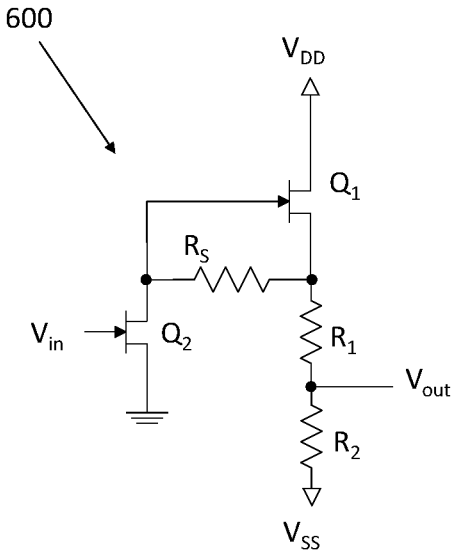


Fig. 5

Fig. 6



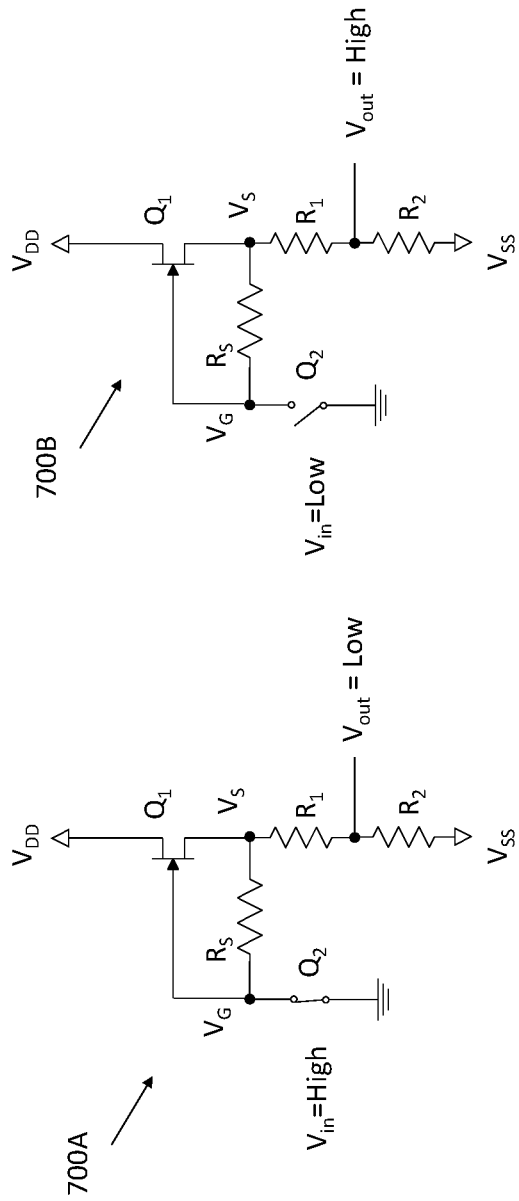


Fig. 7B

Fig. 7A

1

CURRENT SOURCE LOGIC GATE**CROSS-REFERENCE TO RELATED APPLICATION**

This application is a Continuation-in-Part Application claiming the benefit of priority from U.S. patent application Ser. No. 15/373,689, filed on Dec. 9, 2016, pending, which claims priority to U.S. Provisional Application Ser. No. 62/266,176 entitled "Current Source Logic Gate", filed on Dec. 11, 2015. The entirety of the above-noted application is incorporated by reference herein.

ORIGIN OF THE INVENTION

The invention described herein was made by employees of the United States Government and may be manufactured and used by or for the Government for Government purposes without the payment of any royalties thereon or therefor.

FIELD

The present invention relates to a logic gate, and more particularly, to a logic gate circuit having a depletion mode metal-semiconductor field effect transistor (MESFET) and/or junction gate field effect transistor (JFET) transistors and resistors.

BACKGROUND

Silicon Carbide (SiC) integrated circuit (IC) process is capable of operating at very high temperatures. This process, however, is only capable of producing depletion mode n-channel JFET transistors. Thus, designing a logic gate with only this type of transistor may present a challenge.

An alternative design improving the output voltage range and decreasing the physical layout size of the logic gate may be beneficial. Designs that better accommodate variations in wafer processing, such as non-uniformities reported to exist in modern SiC IC epilayers, may also be beneficial.

SUMMARY

Certain embodiments of the present invention may provide solutions to the problems and needs in the art that have not yet been fully identified, appreciated, or solved by current logic gate designs. For example, some embodiments generally pertain to a logic gate circuit comprising a depletion mode MESFET/JFET transistors and resistors. These transistors and resistors may be constructed with SiC depletion mode n-channel JFETs in some embodiments.

In one embodiment, an apparatus may create digital logic gates. The apparatus may include a first N channel depletion mode field effect transistor (or first transistor) with gate, source, and drain terminals. The gate terminal may act as an input to the apparatus. The apparatus may also include a second N channel depletion mode field effect transistor (or second transistor) with gate, source, and drain terminals, configured as a current source. The drain terminal of the second transistor may be tied to a positive voltage relative to ground. The source terminal of the first transistor is tied to ground and the drain terminal of the first transistor tied through a first resistor to the source terminal of the second transistor and directly to the gate terminal of the second transistor, for example. The drain of the first transistor is further tied to a second resistor in series with a third resistor,

2

a remaining lead of the third resistor is tied to a negative voltage relative to ground, and a node common to the second and third resistors is the output of the apparatus.

In another embodiment, an apparatus may include a current source that includes a transistor and a current source resistor, and a current steering switch input stage that includes a transistor to steer current to set an output stage bias point depending on an input logic signal state. The apparatus also includes a resistor divider level shifting output stage comprising a first resistor and a second resistor to set the output stage point and produce valid output logic signal states. The transistor of the current steering switch input stage may function as a switch to provide at least two operating points.

In yet another embodiment, a current source logic gate with depletion mode FET transistors and resistors may include a first N channel depletion mode FET (or a first transistor) with gate, source, and drain terminals and a second N channel depletion mode FET (or a second transistor) with gate, source, and drain terminals. The first transistor is configured to act as a current source, and is positioned above the second transistor. The drain terminal of the first transistor is tied to a positive voltage relative to ground, and the gate terminal of the second transistor acts as an input to the current source logic gate. The source terminal of the second transistor is tied to ground, and the drain terminal of the second transistor is tied through a first resistor to the source terminal of the first transistor and directly to the gate terminal of the first transistor. The drain of the second transistor is further tied to a second resistor in series with a third resistor, a remaining lead of the third resistor is tied to a negative voltage relative to ground, and a node common to the second and third resistors is the output of the current source logic gate.

BRIEF DESCRIPTION OF THE DRAWINGS

In order that the advantages of certain embodiments of the invention will be readily understood, a more particular description of the invention briefly described above will be rendered by reference to specific embodiments that are illustrated in the appended drawings. While it should be understood that these drawings depict only typical embodiments of the invention and are not therefore to be considered to be limiting of its scope, the invention will be described and explained with additional specificity and detail through the use of the accompanying drawings, in which:

FIG. 1 is a circuit diagram illustrating a current source logic gate, according to an embodiment of the present invention.

FIGS. 2A and 2B are circuit diagrams illustrating an input high-output low and an input low-output high, respectively, according to an embodiment of the present invention.

FIGS. 3-5 are circuit diagrams illustrating a current source logic gate, according to an embodiment of the present invention.

FIGS. 6, 7A, and 7B are circuit diagrams illustrating a current source logic gate, according to an embodiment of the present invention.

DETAILED DESCRIPTION OF THE EMBODIMENTS

In some embodiments, an apparatus may create digital logic gates. The apparatus may include a first N channel depletion mode FET (or a first transistor) with gate, source, and drain terminals and a second N channel depletion mode

FET (or a second transistor) with gate, source, and drain terminals. The first transistor is configured to act as a current source, and is positioned above the second transistor. The drain terminal of the first transistor is tied to a selected positive voltage relative to ground, and the gate terminal of the second transistor acts as an input to the current source logic gate. The source terminal of the second transistor is tied to ground, and the drain terminal of the second transistor is tied through a first resistor to the source terminal of the first transistor and directly to the gate terminal of the first transistor. The drain of the second transistor is further tied to a second resistor in series with a third resistor, a remaining lead of the third resistor is tied to a selected negative voltage relative to ground, and a node common to the second and third resistors is the output of the current source logic gate.

In certain embodiments, the first, second, and third resistors are selected based on transfer functions or functional parameters of the first and second transistors such that for a logic false input to the apparatus, a logic true output appears at the output, or for a logic false input to the apparatus, a logic true output appears at the output. For example, common and pertinent transistor transfer functions and functional parameters include transconductance, gate-to-source turn off voltage, drain-to-source resistance, etc. Common and pertinent transistor transfer functions and functional parameters may also include any process or material variables such as channel doping, gate characteristics, carrier mobility, physical geometry of the transistor, epitaxial resistor body effect etc.

Also, in some embodiments, the second transistor is replaced by integer number n N channel depletion mode field effect transistor in series to create a logical NAND structure at the input of the apparatus. In another embodiment, the second transistor is replaced by integer number m N channel depletion mode field effect transistor in parallel to create a logical NOR structure at the input of the apparatus. In yet some other embodiments, the second transistor is replaced by a combination of n series N channel depletion mode field effect transistors and m parallel N channel depletion mode field effect transistors to create multiple term sum of products logic functions.

Certain embodiments may include a logic gate circuit that includes a depletion mode MESFET/JFET transistors and resistors. These transistors and resistors may be constructed with SiC depletion mode n-channel JFETs and SiC n-channel resistors in some embodiments. The logic gate circuit may include three circuit constructs, for example. The first construct may include a current source with one transistor and one resistor. The second construct may include a current steering switch input stage having at least one transistor, and the third construct may include a resistor divider level shifting output stage.

FIG. 1 is a circuit diagram illustrating a current source logic gate **100**, according to an embodiment of the present invention. In some embodiments, current source logic gate **100** may include a current source (Q_1 and R_S), a current steering switch input stage (Q_2), and a resistor divider level shifting output stage (R_1 and R_2).

Current source may be comprised of first transistor Q_1 and current source resistor R_S to provide current, biasing the output stage and limiting the total device current in current source logic gate **100**. The current steering input stage of second transistor Q_2 may steer the current to set the output stage bias point depending on input logic signal state. Finally, the resistor divider level shifting output stage, which

may be comprised of first and second resistors R_1 and R_2 , sets the output stage bias points and further develops valid output logic signal states.

In FIG. 1, current source logic gate **100** may have two operating points, e.g., logic high input and a logic low input. As the basis gate for logic functions, the simplest function performed by current source logic gate **100** is the inverting or NOT function, which results in a logic high output V_{out} for a logic low input V_{in} , and conversely, a logic low output V_{out} for logic high input V_{in} .

As an inverting logic gate and by treating transistor Q_2 at the current steering switch input stage as a switch, current source logic gate may have two ideal operating points. These ideal operating points may illustrate optimal circuit operation. Even though the realized circuit operating points may differ from the ideal cases, the operation is similar. In some embodiments, the logic level high refers to 0V, and the logic level low refers to a negative voltage equal to $\frac{1}{2} V_{SS}$. The two operating points of logic high output and logic low output are shown in FIGS. 2A and 2B respectively, which are circuit diagrams illustrating an input high-output low by current source logic gate **200A** and an input low-output high by current source logic gate **200B**, according to an embodiment of the present invention.

In FIG. 2A, voltage input V_{in} is logic 1 or HIGH, that is at ground potential (V_{gs} of transistor $Q_2=0$) turning on transistor Q_2 , and closing the switch at transistor Q_2 . This shorts transistor Q_2 , connecting voltage V_G to ground, steering the current source current to transistor Q_2 . Output voltage V_{out} is set by supply source voltage V_{SS} and the voltage divider of resistor R_1 and resistor R_2 .

$$V_{out} = (0 - V_{SS}) \cdot \frac{R_2}{R_1 + R_2} + V_{SS} \quad \text{Equation (1)}$$

and if resistor R_1 =resistor R_2 , then

$$V_{out} = \frac{1}{2} V_{SS} \quad \text{Equation (2)}$$

which represents a logic 0 or low.

In FIG. 2B, the input voltage V_{in} is logic 0 or LOW, that is at a potential sufficiently negative to fully turn off the transistor Q_2 , or opening the switch at transistor Q_2 , steering the current source current to the output stage. In other words, the magnitude of the gate to source voltage V_{gs} of transistor $Q_2 \geq$ the turn off gate to source voltage $V_{gs(off)}$. This may disconnect voltage V_G from ground, allowing voltage V_G to move to a self-bias point away from ground and toward drain supply voltage V_{DD} as set by the current source of transistor Q_1 and current source resistor R_S , and the output resistors R_1 and R_2 . If current source resistor R_S is much smaller than resistors R_1 and R_2 and the voltage across the transistor Q_1 (V_{DS}) is small, and since $R_1=R_2$, voltage V_G approaches drain supply voltage V_{DD} , and output voltage V_{out} approaches 0V. In those embodiments, output voltage $V_{out}=0$ volts, which represents a logic 1 or HIGH.

The inverting logic gate operation may in some embodiments be expanded to NAND and NOR logic operations with the addition of transistors $Q_{2(1,1)} \dots Q_{2(N,M)}$ to the current steering stage of the logic gate, that is to add transistors in parallel, series, or both with Q_2 . See, for

example, FIGS. 3-5, which are circuit diagrams illustrating current source logic gate, according to an embodiment of the present invention.

In FIG. 3, current source logic gate 300 may include additional transistors $Q_{2(1)} \dots Q_{2(N)}$ connected in series to the current steering logic gate. In FIG. 4, for example, current source logic gate 400 may include additional transistors $Q_{2(1)} \dots Q_{2(M)}$ connected in parallel to the current steering logic gate. In FIG. 5, additional transistors $V_{m1,2} \dots V_{mN,M}$ connected in series and in parallel to the current steering logic gate.

The actual operation of current source logic gates 300-500, as shown in FIGS. 1 and 3-5, may differ from the ideal case depending on the parameters of the transistor. The parameters may be affected by the device physics, manufacturing process effects, material properties, and geometry. Furthermore, these parameters may be affected by the formation of complex logic gates such as sum of products. For example, transistor Q_2 may act as a switch, which when closed, may set the output at a voltage of $\frac{1}{2}$ VSS. In practice, a transistor does not act like a switch in direct current (DC) analysis, because the transistor has a finite resistance. This finite resistance of transistor Q_2 , i.e., the on resistance, has the benefit in the current source logic gate of limiting the logic gates current. This resistance may also increase the output voltage, which decreases the output voltage swing, reducing the noise margin of the current source logic gate.

The operation of the current source logic gate may be optimized through the choice in resistor values. As the current source resistor (R_S) controls the current provided by the current source (current source resistor R_S and transistor Q_1) for a given transconductance. For example, reducing the current by increasing current source resistor R_S may lessen the current through transistor Q_2 . This may result in a decrease of the output voltage in the low state. This may also increase the output voltage swing, increasing the noise margin of the gate.

During operation, the logic high output shown in FIG. 2B, may also differ from the ideal case. For example, in FIG. 2B, the voltage dropped across current source resistor R_S and transistor Q_1 appears to be negligible. This, however, may not be the case during operation of current source logic gate 200B, because resistors R_1 and R_2 may not be made large enough for this assumption. In practice, as current source resistor R_S increases, the output voltage in the output high state may decrease, decreasing the noise margin. This effect can be compensated for by decreasing the ratio of resistor R_1 to resistor R_2 , making resistor R_1 less than resistor R_2 . This may also increase the output voltage in the high state for a given transconductance parameter and current source resistor R_S .

As the transistor parameters begin to influence the operation of the logic gate, the logic gate performance may be modified through the choice of resistor values. These resistor values give some control over the logic gate current and output voltage swing. Depending on the transistor parameters and application, resistor values may be selected to optimize logic gate performance.

Additionally, the semiconductor physical processes will affect the operation of each of the logic gate components influencing the overall logic gate performance. For instance epitaxial resistors will be influenced by the substrate body bias effect or body effect on the resistor values. The body effect may make the effective value of R_1 to be greater than R_2 even when R_1 and R_2 are constructed to be identical in all physical fabrication aspects. This body effect may be overcome by suitably decreasing the ratio of resistor R_1 to R_2 .

It will be readily understood that the components of various embodiments of the present invention, as generally described and illustrated in the figures herein, may be arranged and designed in a wide variety of different configurations. Thus, the detailed description of the embodiments, as represented in the attached figures, is not intended to limit the scope of the invention as claimed, but is merely representative of selected embodiments of the invention.

The features, structures, or characteristics of the invention described throughout this specification may be combined in any suitable manner in one or more embodiments. For example, reference throughout this specification to "certain embodiments," "some embodiments," or similar language means that a particular feature, structure, or characteristic described in connection with the embodiment is included in at least one embodiment of the present invention. Thus, appearances of the phrases "in certain embodiments," "in some embodiment," "in other embodiments," or similar language throughout this specification do not necessarily all refer to the same group of embodiments and the described features, structures, or characteristics may be combined in any suitable manner in one or more embodiments.

It should be noted that reference throughout this specification to features, advantages, or similar language does not imply that all of the features and advantages that may be realized with the present invention should be or are in any single embodiment of the invention. Rather, language referring to the features and advantages is understood to mean that a specific feature, advantage, or characteristic described in connection with an embodiment is included in at least one embodiment of the present invention. Thus, discussion of the features and advantages, and similar language, throughout this specification may, but do not necessarily, refer to the same embodiment.

Furthermore, the described features, advantages, and characteristics of the invention may be combined in any suitable manner in one or more embodiments. One skilled in the relevant art will recognize that the invention can be practiced without one or more of the specific features or advantages of a particular embodiment. In other instances, additional features and advantages may be recognized in certain embodiments that may not be present in all embodiments of the invention.

One having ordinary skill in the art will readily understand that the invention as discussed above may be practiced with steps in a different order, and/or with hardware elements in configurations which are different than those which are disclosed. Therefore, although the invention has been described based upon these preferred embodiments, it would be apparent to those of skill in the art that certain modifications, variations, and alternative constructions would be apparent, while remaining within the spirit and scope of the invention. In order to determine the metes and bounds of the invention, therefore, reference should be made to the appended claims.

Further, another embodiment of the current source logic gate 600 is illustrated in FIG. 6. The current source logic gate 600 may provide a larger noise margin given variations in the process to construct the resistors. In some embodiments, current source logic gate 600 may include a current source (Q_1 and R_S), a current steering switch input stage (Q_2), and a resistor divider level shifting output stage (R_1 and R_2).

In FIG. 6, current source logic gate 600 may have two operating points, e.g., logic high input and a logic low input. As the basis gate for logic functions, the simplest function performed by current source logic gate 600 is the inverting

or NOT function, which results in a logic high output V_{out} for a logic low input V_{in} , and conversely, a logic low output V_{out} for logic high input V_{in} .

The two ideal operating points of the current source logic gate 600 configured in an inverting logic gate are illustrated in FIGS. 7A and 7B. FIG. 7A illustrates the input high output low operating point. The input is high, turning on the current steering switch input stage (Q_2) and providing a path for the current from the current source (Q_1 and R_S) to ground. The source terminal voltage of Q_1 (V_S) is brought toward ground (0V) allowing the resistor divider output stage to set the output voltage according to the values of R_1 and R_2 . FIG. 7B illustrates the input low output high operating point. The input is low, opening the current steering switch input stage (Q_2), removing the current source resistor R_S from the current path. With no current flowing through R_S , the gate and source terminals of Q_1 are effectively tied together, setting V_{GS} , the gate terminal to source terminal voltage to 0. This allows to the current source transistor Q_1 to self bias to a current set by the output resistor divider R_1 and R_2 , which in turn also sets the output voltage to a voltage in between the positive supply voltage V_{DD} and negative supply voltage V_{SS} according to the resistor divider of R_1 and R_2 .

The inverting logic gate operation may in some embodiments be expanded to NAND and NOR logic operations with the addition of transistors $Q_{2(1,1)} \dots Q_{2(N,M)}$ to the current steering stage of the logic gate, that is to add transistors in parallel, series, or both with Q_2 . See, for example, FIGS. 8-10, which are circuit diagrams illustrating current source logic gates in NAND, NOR, and multiple term Sum of Products configurations, according to an embodiment of the present invention.

The invention claimed is:

1. An apparatus configured to create digital logic gates, comprising:

a first N channel depletion mode field effect transistor (“first transistor”) with gate, source, and drain terminals, wherein the gate terminal acts as an input to the apparatus; and

a second N channel depletion mode field effect transistor (“second transistor”) with gate, source, and drain terminals, configured as a current source, wherein the drain terminal of the second transistor is tied to a positive voltage relative to ground,

the source terminal of the first transistor tied to ground and the drain terminal of the first transistor tied through a first resistor to the source terminal of the second transistor and directly to the gate terminal of the second transistor,

and

the source of the second transistor is further tied to a second resistor in series with a third resistor, a remaining lead of the third resistor is tied to a negative voltage relative to ground, and a node common to the second and third resistors is the output of the apparatus.

2. The apparatus of claim 1, wherein the first, second and third resistors are selected based on transfer functions or functional parameters of the first and second transistors and further selected to minimize the effect of the substrate body bias effect on the second and third resistor to obtain selected logic true and logic false output voltage values such that for a logic false input to the apparatus, a logic true output appears at the output of the apparatus, or for a logic true input to the apparatus, a logic false output appears at the output of the apparatus.

3. The apparatus of claim 1, wherein the first transistor is replaced by n N channel depletion mode field effect transistor in series to create a logical NAND structure at the input of the apparatus.

4. The apparatus of claim 1, wherein the first transistor is replaced by m N channel depletion mode field effect transistor in parallel to create a logical NOR structure at the input of the apparatus.

5. The apparatus of claim 1, wherein the first transistor is a combination of n series N channel depletion mode field effect transistors and m parallel N channel depletion mode field effect transistors to create multiple term sum of products logic functions.

6. The apparatus of claim 1, wherein a positive voltage and a negative voltage relative to ground are selected to accommodate a turn off voltage of the first transistor as reflected by a voltage divider function performed by the second and third resistors.

7. The apparatus of claim 6, wherein a value of the first resistor is selected to set a current output of the second transistor,

the current output is further selected in accordance with selected positive voltage and negative voltage and to define a value for the second resistor and a value for the third resistor.

8. A current source logic gate with depletion mode field effect transistor (“FET”) transistors and resistors, comprising:

a current source comprising a transistor and a current source resistor;

a current steering switch input stage comprising a transistor to switch current through the current source bias resistor on an input logic level high state to set an output stage bias point or on an input logic level low state to allow the output stage to self-bias; and

a resistor divider level shifting output stage comprising a first resistor and a second resistor to set the output stage point and produce valid output logic signal states, wherein

the transistor of the current steering switch input stage functions as a switch to provide at least two operating points.

9. The current source logic gate of claim 8, wherein the two operating points comprises a logic level high and a logic level low.

10. The current source logic gate of claim 8, wherein, when the operating point comprises the logic level high at the input stage of the current steering switch, a logic low output appears at an output stage of the current source logic gate, or

when the operating point comprises the logic level low at the input stage of the current steering switch, a logic high output appears at the output stage of the current source logic gate.

11. The current source logic gate of claim 8, wherein the current steering switch input stage comprises one or more additional transistors connected in parallel, in series, or both.

12. The current source logic gate of claim 8, wherein the current steering switch input stage acts as a switch to limit logic gate current.

13. The current source logic gate of claim 8, wherein the current source resistor of the current source controls current provided by the current source.

14. A current source logic gate with depletion mode field effect transistor (“FET”) transistors and resistors, comprising:

a first N channel depletion mode FET (“first transistor”) with gate, source, and drain terminals; and
 a second N channel depletion mode FET (“second transistor”) with gate, source, and drain terminals, wherein the first transistor is configured to act as a current source, and is positioned above the second transistor,
 the drain terminal of the first transistor is tied to a positive voltage relative to ground,
 the gate terminal of the second transistor acts as an input to the current source logic gate,
 the source terminal of the second transistor is tied to ground, and the drain terminal of the second transistor is tied through a first resistor to the source terminal of the first transistor and directly to the gate terminal of the first transistor, and
 the source of the first transistor is further tied to a second resistor in series with a third resistor, a remaining lead of the third resistor is tied to a negative voltage relative to ground, and a node common to the second and third resistors is the output of the current source logic gate.

15. The current source logic gate of claim **14**, wherein the first resistor, the second resistor, and the third resistor are selected based on transfer functions or functional parameters of the first and second transistors and further the second and third resistors are selected to overcome the substrate body bias effect on the second and third transistors such that for a logic false input to the current source logic gate, a logic true output appears at the output of the current source logic

gate, or for a logic true input to the current source logic gate, a logic false output appears at the output of the current source logic gate.

16. The current source logic gate of claim **14**, wherein the second transistor is replaced by n N channel depletion mode field effect transistor in series to create a logical NAND structure at the input of the current source logic gate.

17. The current source logic gate of claim **14**, wherein the second transistor is replaced by n N channel depletion mode field effect transistor in parallel to create a logical NOR structure at the input of the current source logic gate.

18. The current source logic gate of claim **14**, wherein the second transistor is a combination of n series N channel depletion mode field effect transistors and m parallel N channel depletion mode field effect transistors to create multiple term sum of products logic functions.

19. The current source logic gate of claim **14**, wherein a positive voltage and a negative voltage relative to ground are selected to accommodate a turn off voltage of the second transistor as reflected by a voltage divider function performed by the second and third resistors.

20. The current source logic gate of claim **19**, wherein a value of the first resistor is selected to set a current output of the first transistor,

the current output is further selected in accordance with selected positive voltage and negative voltage and to define a value for the second resistor and a value for the third resistor.

* * * * *