

2017

Precipitation change in the United States

David R. Easterling
NOAA National Centers for Environmental Information

Jeff Arnold
U.S. Army Corps of Engineers

Thomas Knutson
NOAA Geophysical Fluid Dynamics Lab, Tom.Knutson@noaa.gov

Kenneth Kunkel
North Carolina State University, ken_kunkel@ncsu.edu

Allegra LeGrande
NASA Goddard Institute for Space Studies

See next page for additional authors

Follow this and additional works at: <https://digitalcommons.unl.edu/usdeptcommercepub>

Easterling, David R.; Arnold, Jeff; Knutson, Thomas; Kunkel, Kenneth; LeGrande, Allegra; Leung, L. Ruby; Vose, Russell; Waliser, Duane; and Wehner, Michael, "Precipitation change in the United States" (2017). *Publications, Agencies and Staff of the U.S. Department of Commerce*. 586.
<https://digitalcommons.unl.edu/usdeptcommercepub/586>

This Article is brought to you for free and open access by the U.S. Department of Commerce at DigitalCommons@University of Nebraska - Lincoln. It has been accepted for inclusion in Publications, Agencies and Staff of the U.S. Department of Commerce by an authorized administrator of DigitalCommons@University of Nebraska - Lincoln.

Authors

David R. Easterling, Jeff Arnold, Thomas Knutson, Kenneth Kunkel, Allegra LeGrande, L. Ruby Leung, Russell Vose, Duane Waliser, and Michael Wehner

Precipitation change in the United States

David Easterling, NOAA National Centers for Environmental Information

Jeff Arnold, U.S. Army Corps of Engineers

Thomas Knutson, NOAA Geophysical Fluid Dynamics Lab

Kenneth Kunkel, North Carolina State University

Allegra LeGrande, NASA Goddard Institute for Space Studies

L. Ruby Leung, Pacific Northwest National Laboratory

Russell Vose, NOAA National Centers for Environmental Information

Duane Waliser, NASA Jet Propulsion Laboratory

Michael Wehner, Lawrence Berkeley National Laboratory

Citation: In: *Climate Science Special Report: A Sustained Assessment Activity of the U.S. Global Change Research Program* [Wuebbles, D.J., D.W. Fahey, K.A. Hibbard, D.J. Dokken, B.C. Stewart, and T.K. Maycock (eds.)]. U.S. Global Change Research Program, Washington, DC, USA (2017), pp. 301-335.

Comments: U.S. Government work

Abstract

1. Annual precipitation has decreased in much of the West, Southwest, and Southeast and increased in most of the Northern and Southern Plains, Midwest, and Northeast. A national average increase of 4% in annual precipitation since 1901 is mostly a result of large increases in the fall season. (*Medium confidence*)
2. Heavy precipitation events in most parts of the United States have increased in both intensity and frequency since 1901 (*high confidence*). There are important regional differences in trends, with the largest increases occurring in the northeastern United States (*high confidence*). In particular, mesoscale convective systems (organized clusters of thunderstorms)—the main mechanism for warm season precipitation in the central part of the United States—have increased in occurrence and precipitation amounts since 1979 (*medium confidence*).
3. The frequency and intensity of heavy precipitation events are projected to continue to increase over the 21st century (*high confidence*). Mesoscale convective systems in the central United States, are expected to continue to increase in number and intensity in the future (*medium confidence*). There are, however, important regional and seasonal differences in projected changes in total precipitation: the northern United States, including Alaska, is projected to receive more precipitation in the winter and spring, and parts of the southwestern United States are projected to receive less precipitation in the winter and spring (*medium confidence*).
4. Northern Hemisphere spring snow cover extent, North America maximum snow depth, snow water equivalent in the western United States, and extreme snowfall years in the southern and western United States have all declined, while extreme snowfall years in parts of the northern United States have increased (*medium confidence*). Projections indicate large declines in snowpack in the western United States and shifts to more precipitation falling as rain than snow in the cold season in many parts of the central and eastern United States (*high confidence*).

1 **7. Precipitation Change in the United States**

2 **KEY FINDINGS**

- 3 1. Annual precipitation has decreased in much of the West, Southwest, and Southeast and
4 increased in most of the Northern and Southern Plains, Midwest, and Northeast. A
5 national average increase of 4% in annual precipitation since 1901 is mostly a result of
6 large increases in the fall season. (*Medium confidence*)
- 7 2. Heavy precipitation events in most parts of the United States have increased in both
8 intensity and frequency since 1901 (*high confidence*). There are important regional
9 differences in trends, with the largest increases occurring in the northeastern United
10 States (*high confidence*). In particular, mesoscale convective systems (organized clusters
11 of thunderstorms)—the main mechanism for warm season precipitation in the central part
12 of the United States—have increased in occurrence and precipitation amounts since 1979
13 (*medium confidence*).
- 14 3. The frequency and intensity of heavy precipitation events are projected to continue to
15 increase over the 21st century (*high confidence*). Mesoscale convective systems in the
16 central United States, are expected to continue to increase in number and intensity in the
17 future (*medium confidence*). There are, however, important regional and seasonal
18 differences in projected changes in total precipitation: the northern United States,
19 including Alaska, is projected to receive more precipitation in the winter and spring, and
20 parts of the southwestern United States are projected to receive less precipitation in the
21 winter and spring (*medium confidence*).
- 22 4. Northern Hemisphere spring snow cover extent, North America maximum snow depth,
23 snow water equivalent in the western United States, and extreme snowfall years in the
24 southern and western United States have all declined, while extreme snowfall years in
25 parts of the northern United States have increased (*medium confidence*). Projections
26 indicate large declines in snowpack in the western United States and shifts to more
27 precipitation falling as rain than snow in the cold season in many parts of the central and
28 eastern United States (*high confidence*).

29 **Introduction**

30 Changes in precipitation are one of the most important potential outcomes of a warming world
31 because precipitation is integral to the very nature of society and ecosystems. These systems
32 have developed and adapted to the past envelope of precipitation variations. Any large changes
33 beyond the historical envelope may have profound societal and ecological impacts.

34 Historical variations in precipitation, as observed from both instrumental and proxy records,
35 establish the context around which future projected changes can be interpreted, because it is

1 within that context that systems have evolved. Long-term station observations from core climate
2 networks serve as a primary source to establish observed changes in both means and extremes.
3 Proxy records, which are used to reconstruct past climate conditions, are varied and include
4 sources such as tree ring and ice core data. Projected changes are examined using the Coupled
5 Model Intercomparison Project Phase 5 (CMIP5) suite of model simulations. They establish the
6 likelihood of distinct regional and seasonal patterns of change.

7 **7.1 Historical Changes**

8 **7.1.1 Mean Changes**

9 Annual precipitation averaged across the United States has increased approximately 4% over the
10 1901–2015 period, slightly less than the 5% increase reported in the Third National Climate
11 Assessment (NCA3) over the 1901–2012 period (Walsh et al. 2014). There continue to be
12 important regional and seasonal differences in precipitation changes (Figure 7.1). Seasonally,
13 national increases are largest in the fall, while little change is observed for winter. Regional
14 differences are apparent, as the Northeast, Midwest, and Great Plains have had increases while
15 parts of the Southwest and Southeast have had decreases. The slight decrease in the change in
16 annual precipitation across the United States since NCA3 appears to be the result of the recent
17 lingering droughts in the western and southwestern United States (NOAA 2016a; Barnston and
18 Lyon 2016). However, the recent meteorological drought in California that began in late 2011
19 (Seager et al. 2015; NOAA 2016b) now appears to be largely over, due to the substantial
20 precipitation and snowpack the state received in the winter of 2016–2017. The year 2015 was the
21 third wettest on record, just behind 1973 and 1983 (all of which were years marked by El Niño
22 events). Interannual variability is substantial, as evidenced by large multiyear meteorological and
23 agricultural droughts in the 1930s and 1950s.

24 **[INSERT FIGURE 7.1 HERE]**

25 Changes in precipitation differ markedly across the seasons, as do regional patterns of increases
26 and decreases. For the contiguous United States, fall exhibits the largest (10%) and most
27 widespread increase, exceeding 15% in much of the Northern Great Plains, Southeast, and
28 Northeast. Winter average for the United States has the smallest increase (2%), with drying over
29 most of the western United States as well as parts of the Southeast. In particular, a reduction in
30 streamflow in the northwestern United States has been linked to a decrease in orographic
31 enhancement of precipitation since 1950 (Luce et al. 2013). Spring and summer have comparable
32 increases (about 3.5%) but substantially different patterns. In spring, the northern half of the
33 contiguous United States has become wetter, and the southern half has become drier. In summer,
34 there is a mixture of increases and decreases across the Nation. Alaska shows little change in
35 annual precipitation (+1.5%); however, in all seasons, central Alaska shows declines and the
36 panhandle shows increases. Hawai'i shows a decline of more than 15% in annual precipitation.

1 7.1.2 Snow

2 Changes in snow cover extent (SCE) in the Northern Hemisphere exhibit a strong seasonal
3 dependence (Vaughan et al. 2013). There has been little change in winter SCE since the 1960s
4 (when the first satellite records became available), while fall SCE has increased. However, the
5 decline in spring SCE is larger than the increase in fall and is due in part to higher temperatures
6 that shorten the time snow spends on the ground in the spring. This tendency is highlighted by
7 the recent occurrences of both unusually high and unusually low monthly (October–June) SCE
8 values, including the top 5 highest and top 5 lowest values in the 48 years of data. From 2010
9 onward, 7 of the 45 highest monthly SCE values occurred, all in the fall or winter (mostly in
10 November and December), while 9 of the 10 lowest May and June values occurred. This reflects
11 the trend toward earlier spring snowmelt, particularly at high latitudes (Kunkel et al. 2016). An
12 analysis of seasonal maximum snow depth for 1961–2015 over North America indicates a
13 statistically significant downward trend of 0.11 standardized anomalies per decade and a trend
14 toward the seasonal maximum snow depth occurring earlier—approximately one week earlier on
15 average since the 1960s (Kunkel et al. 2016). There has been a statistically significant decrease
16 over the period of 1930–2007 in the frequency of years with a large number of snowfall days
17 (years exceeding the 90th percentile) in the southern United States and the U.S. Pacific
18 Northwest and an increase in the northern United States (Kliver and Leathers 2015). In the snow
19 belts of the Great Lakes, lake effect snowfall has increased overall since the early 20th century
20 for Lakes Superior, Michigan-Huron, and Erie (Kunkel et al. 2010). However, individual studies
21 for Lakes Michigan (Bard and Kristovich 2012) and Ontario (Harnett et al. 2014) indicate that
22 this increase has not been continuous. In both cases, upward trends were observed till the
23 1970s/early 1980s. Since then, however, lake effect snowfall has decreased in these regions.
24 Lake effect snows along the Great Lakes are affected greatly by ice cover extent and lake water
25 temperatures. As ice cover diminishes in winter, the expectation is for more lake effect snow
26 until temperatures increase enough such that much of what now falls as snow instead falls as rain
27 (Wright et al. 2013; Vavrus et al. 2013).

28 End of season snow water equivalent (SWE)—especially important where water supply is
29 dominated by spring snow melt (for example, in much of the American West)—has declined
30 since 1980 in the western United States, based on analysis of in situ observations, and is
31 associated with springtime warming (Pederson et al. 2013). Satellite measurements of SWE
32 based on brightness temperature also show a decrease over this period (Gan et al. 2013). The
33 variability of western United States SWE is largely driven by the most extreme events, with the
34 top decile of events explaining 69% of the variability (Lute and Abatzoglou 2014). The recent
35 drought in the western United States was highlighted by the extremely dry 2014–2015 winter
36 that followed three previous dry winters. At Donner Summit, CA, (approximate elevation of
37 2,100 meters) in the Sierra Nevada Mountains, end-of-season SWE on April 1, 2015, was the
38 lowest on record, based on survey measurements back to 1910, at only 0.51 inches (1.3 cm), or
39 less than 2% of the long-term average. This followed the previous record low in 2014. The

1 estimated return period of this drought is at least 500 years based on paleoclimatic
2 reconstructions (Belmecheri et al. 2016).

3 **7.1.3 Observed changes in U.S. seasonal extreme precipitation.**

4 Extreme precipitation events occur when the air is nearly completely saturated. Hence, extreme
5 precipitation events are generally observed to increase in intensity by about 6% to 7% for each
6 degree Celsius of temperature increase, as dictated by the Clausius–Clapeyron relation. Figure
7 7.2 shows the observed change in the 20-year return value of the seasonal maximum 1-day
8 precipitation totals over the period 1948–2015. A mix of increases and decreases is shown, with
9 the Northwest showing very small changes in all seasons, the southern Great Plains showing a
10 large increase in winter, and the Southeast showing a large increase in the fall.

11 **[INSERT FIGURE 7.2 HERE]**

12 A U.S. index of extreme precipitation from NCA3 was updated (Figure 7.3) through 2016. This
13 is the number of 2-day precipitation events exceeding the threshold for a 5-year recurrence. The
14 values were calculated by first arithmetically averaging the station data for all stations within
15 each 1° by 1° latitude/longitude grid for each year and then averaging over the grid values across
16 CONUS for each year during the period of 1896–2015. The number of events has been well
17 above average for the last three decades. The slight drop from 2006–2010 to 2011–2016 reflects
18 a below average number during the widespread severe meteorological drought year of 2012,
19 while the other years in this pentad were well above average. The index value for 2015 was 80%
20 above the 1901–1960 reference period average and the third highest value in the 120 years of
21 record (after 1998 and 2008).

22 **[INSERT FIGURE 7.3 HERE]**

23 Maximum daily precipitation totals were calculated for consecutive 5-year blocks from 1901
24 (1901–1905, 1906–1910, 1911–1915, ..., 2011–2016) for individual long-term stations. For each
25 5-year block, these values were aggregated to the regional scale by first arithmetically averaging
26 the station 5-year maximum for all stations within each 2° by 2° latitude/longitude grid and then
27 averaging across all grids within each region to create a regional time series. Finally, a trend was
28 computed for the resulting regional time series. The difference between these two periods
29 (Figure 7.4, upper left panel) indicates substantial increases over the eastern United States,
30 particularly the northeastern United States with an increase of 27% since 1901. The increases are
31 much smaller over the western United States, with the southwestern and northwestern United
32 States showing little increase.

33 Another index of extreme precipitation from NCA3 (the total precipitation falling in the top 1%
34 of all days with precipitation) was updated through 2016 (Figure 7.4, upper right panel). This
35 analysis is for 1958–2016. There are increases in all regions, with the largest increases again in
36 the northeastern United States. There are some changes in the values compared to NCA3, with

1 small increases in some regions such as the Midwest and Southwest and small decreases in
2 others such as the Northeast, but the overall picture of changes is the same.

3 The national results shown in Figure 7.3 were disaggregated into regional values for two periods:
4 1901–2016 (Figure 7.4, lower left panel) and 1958–2016 (Figure 7.4, lower right panel) for
5 comparison with Figure 7.4, upper right panel. As with the other metrics, there are large
6 increases over the eastern half of the United States while the increases in the western United
7 States are smaller and there are actually small decreases in the Southwest.

8 There are differences in the magnitude of changes among the four different regional metrics in
9 Figure 7.4, but the overall picture is the same: large increases in the eastern half of the United
10 States and smaller increases, or slight decreases, in the western United States.

11 **[INSERT FIGURE 7.4 HERE]**

12 **7.1.4 Extratropical Cyclones and Mesoscale Convective Systems**

13 As described in Chapter 9: Extreme Storms, there is uncertainty about future changes in winter
14 extratropical cyclones (ETCs) (Colle et al. 2013). Thus, the potential effects on winter extreme
15 precipitation events is also uncertain. Summertime ETC activity across North America has
16 decreased since 1979, with a reduction of more than 35% in the number of strong summertime
17 ETCs (Chang et al. 2016). Most climate models simulate little change over this same historical
18 period, but they project a decrease in summer ETC activity during the remainder of the 21st
19 century (Chang et al. 2016). This is potentially relevant to extreme precipitation in the
20 northeastern quadrant of the United States because a large percentage of the extreme
21 precipitation events in this region are caused by ETCs and their associated fronts (Kunkel et al.
22 2012). This suggests that in the future there may be fewer opportunities in the summer for
23 extreme precipitation, although increases in water vapor are likely to overcompensate for any
24 decreases in ETCs by increasing the likelihood that an ETC will produce excessive rainfall
25 amounts. A very idealized set of climate simulations (Pfahl et al. 2015) suggests that substantial
26 projected warming will lead to a decrease in the number of ETCs but an increase in the intensity
27 of the strongest ETCs. One factor potentially causing this model ETC intensification is an
28 increase in latent heat release in these storms related to a moister atmosphere. Because of the
29 idealized nature of these simulations, the implications of these results for the real earth–
30 atmosphere system is uncertain. However, the increased latent heat mechanism is likely to occur
31 given the high confidence in a future moister atmosphere. For eastern North America, CMIP5
32 simulations of the future indicate an increase in strong ETCs (Colle et al. 2013). Thus, it is
33 possible that the most extreme precipitation events associated with ETCs may increase in the
34 future.

35 Mesoscale convective systems (MCSs), which contribute substantially to warm season
36 precipitation in the tropics and subtropics (Nesbitt et al. 2006), account for about half of rainfall
37 in the central United States (Frisch et al. 1986). Schumacher and Johnson (2006) reported that

1 74% of all warm season extreme rain events over the eastern two-thirds of the United States
2 during the period 1999–2003 were associated with an MCS. Feng et al. (2016) found that large
3 regions of the central United States experienced statistically significant upward trends in April–
4 June MCS rainfall of 0.4–0.8 mm per day (approximately 20%–40%) per decade from 1979 to
5 2014. They further found upward trends in MCS frequency of occurrence, lifetime, and
6 precipitation amount, which they attribute to an enhanced west-to-east pressure gradient
7 (enhanced Great Plains Low-Level Jet) and enhanced specific humidity throughout the eastern
8 Great Plains.

9 **7.1.5 Detection and Attribution**

10 **TRENDS**

11 Detectability of trends (compared to internal variability) for a number of precipitation metrics
12 over the continental United States has been examined; however, trends identified for the U.S.
13 regions have not been clearly attributed to anthropogenic forcing (Anderson et al. 2015;
14 Easterling et al. 2016). One study concluded that increasing precipitation trends in some north-
15 central U.S. regions and the extreme annual anomalies there in 2013 were at least partly
16 attributable to the combination of anthropogenic and natural forcing (Knutson et al. 2014).

17 There is *medium confidence* that anthropogenic forcing has contributed to global-scale
18 intensification of heavy precipitation over land regions with sufficient data coverage (Bindoff et
19 al. 2013). Global changes in extreme precipitation have been attributed to anthropogenically
20 forced climate change (Min et al. 2011, 2013), including annual maximum 1-day and 5-day
21 accumulated precipitation over northern hemisphere land regions and (relevant to this report)
22 over the North American continent (Zhang et al. 2013). Although the United States was not
23 separately assessed, the parts of North America with sufficient data for analysis included the
24 continental United States and parts of southern Canada, Mexico, and Central America. Since the
25 covered region was predominantly over the United States, these detection/attribution findings are
26 applicable to the continental United States.

27 Analyses of precipitation extreme changes over the United States by region (20-year return
28 values of seasonal daily precipitation over 1948–2015, Figure 7.2) show statistically significant
29 increases consistent with theoretical expectations and previous analyses (Westra et al. 2013).
30 Further, a significant increase in the area affected by precipitation extremes over North America
31 has also been detected (Dittus et al. 2015). There is likely an anthropogenic influence on the
32 upward trend in heavy precipitation (Dittus et al. 2016), although models underestimate the
33 magnitude of the trend. Extreme rainfall from U.S. landfalling tropical cyclones has been higher
34 in recent years (1994–2008) than the long-term historical average, even accounting for temporal
35 changes in storm frequency (Kunkel et al. 2010).

36 Based on current evidence, it is concluded that detectable but not attributable increases in mean
37 precipitation have occurred over parts of the central United States. Formal detection-attribution

1 studies indicate a human contribution to extreme precipitation increases over the continental
2 United States, but confidence is *low* based on those studies alone due to the short observational
3 period, high natural variability, and model uncertainty.

4 In summary, based on available studies, it is concluded that for the continental United States
5 there is *high confidence* in the detection of extreme precipitation increases, while there is *low*
6 *confidence* in attributing the extreme precipitation changes purely to anthropogenic forcing.
7 There is stronger evidence for a human contribution (*medium confidence*) when taking into
8 account process-based understanding (increased water vapor in a warmer atmosphere), evidence
9 from weather and climate models, and trends in other parts of the world.

10 **EVENT ATTRIBUTION**

11 A number of recent heavy precipitation events have been examined to determine the degree to
12 which their occurrence and severity can be attributed to human-induced climate change. Table
13 7.1 summarizes available attribution statements for recent extreme U.S. precipitation events.
14 Seasonal and annual precipitation extremes occurring in the north-central and eastern U.S.
15 regions in 2013 were examined for evidence of an anthropogenic influence on their occurrence
16 (Knutson et al. 2014). Increasing trends in annual precipitation were detected in the northern tier
17 of states, March–May precipitation in the upper Midwest, and June–August precipitation in the
18 eastern United States since 1900. These trends are attributed to external forcing (anthropogenic
19 and natural) but could not be directly attributed to anthropogenic forcing alone. However, based
20 on this analysis, it is concluded that the probability of these kinds of extremes has increased due
21 to anthropogenic forcing.

22 The human influence on individual storms has been investigated with conflicting results. For
23 example, in examining the attribution of the 2013 Colorado floods, one study finds that despite
24 the expected human-induced increase in available moisture, the GEOS-5 model produces fewer
25 extreme storms in the 1983–2012 period compared to the 1871–1900 period in Colorado during
26 the fall season; the study attributes that behavior to changes in the large-scale circulation
27 (Hoerling et al. 2014). However, another study finds that such coarse models cannot produce the
28 observed magnitude of precipitation due to resolution constraints (Pall et al. 2017). Based on a
29 highly conditional set of hindcast simulations imposing the large-scale meteorology and a
30 substantial increase in both the probability and magnitude of the observed precipitation
31 accumulation magnitudes in that particular meteorological situation, the study could not address
32 the question of whether such situations have become more or less probable. Extreme
33 precipitation event attribution is inherently limited by the rarity of the necessary meteorological
34 conditions and the limited number of model simulations that can be performed to examine rare
35 events. This remains an open and active area of research. However, based on these two studies,
36 the anthropogenic contribution to the 2013 Colorado heavy rainfall-flood event is unclear.

37 **[INSERT TABLE 7.1 HERE]**

1 7.2 Projections

2 Changes in precipitation in a warmer climate are governed by many factors. Although energy
3 constraints can be used to understand global changes in precipitation, projecting regional
4 changes is much more difficult because of uncertainty in projecting changes in the large-scale
5 circulation that plays important roles in the formation of clouds and precipitation (Shepherd
6 2014). For the contiguous United States (CONUS), future changes in seasonal average
7 precipitation will include a mix of increases, decreases, or little change, depending on location
8 and season (Figure 7.5). High-latitude regions are generally projected to become wetter while the
9 subtropical zone is projected to become drier. As the CONUS lies between these two regions,
10 there is significant uncertainty about the sign and magnitude of future anthropogenic changes to
11 seasonal precipitation in much of the region, particularly in the middle latitudes of the Nation.
12 However, because the physical mechanisms controlling extreme precipitation differ from those
13 controlling seasonal average precipitation (Section 7.1.4), in particular atmospheric water vapor
14 will increase with increasing temperatures, confidence is *high* that precipitation extremes will
15 increase in frequency and intensity in the future throughout the CONUS.

16 Global climate models used to project precipitation changes exhibit varying degrees of fidelity in
17 capturing the observed climatology and seasonal variations of precipitation across the United
18 States. Global or regional climate models with higher horizontal resolution generally achieve
19 better skill than the CMIP5 models in capturing the spatial patterns and magnitude of winter
20 precipitation in the western and southeastern United States (e.g., Mearns et al. 2012; Wehner
21 2013; Bacmeister et al. 2014; Wehner et al. 2014), leading to improved simulations of snowpack
22 and runoff (e.g., Rauscher et al. 2008; Rasmussen et al. 2011). Simulation of present and future
23 summer precipitation remains a significant challenge, as current convective parameterizations
24 fail to properly represent the statistics of mesoscale convective systems (Boyle and Klein 2010).
25 As a result, high-resolution models that still require the parameterization of deep convection
26 exhibit mixed results (Wehner et al. 2014; Sakaguchi et al. 2015). Advances in computing
27 technology are beginning to enable regional climate modeling at the higher resolutions (1–4 km),
28 permitting the direct simulation of convective clouds systems (e.g., Ban et al. 2014) and
29 eliminating the need for this class of parameterization. However, projections from such models
30 are not yet ready for inclusion in this report.

31 Important progress has been made by the climate modeling community in providing multimodel
32 ensembles such as CMIP5 (Taylor et al. 2012) and NARCCAP (Mearns et al. 2012) to
33 characterize projection uncertainty arising from model differences and large ensemble
34 simulations such as CESM-LE (Kay et al. 2015) to characterize uncertainty inherent in the
35 climate system due to internal variability. These provide an important resource for examining the
36 uncertainties in future precipitation projections.

37

1 7.2.1 Future Changes in U.S. Seasonal Mean Precipitation

2 In the United States, projected changes in seasonal mean precipitation span the range from
3 profound decreases to profound increases. And in many regions and seasons, projected changes
4 in precipitation are not large compared to natural variations. The general pattern of change is
5 clear and consistent with theoretical expectations. Figure 7.5 shows the weighted CMIP5
6 multimodel average seasonal change at the end of the century compared to the present under the
7 RCP8.5 scenario (see Ch. 4: Projections for discussion of RCPs). In this figure, changes
8 projected with high confidence to be larger than natural variations are stippled. Regions where
9 future changes are projected with high confidence to be smaller than natural variations are
10 hatched. In winter and spring, the northern part of the country is projected to become wetter as
11 the global climate warms. In the early to middle parts of this century, this will likely be
12 manifested as increases in snowfall (O’Gorman 2014). By the latter half of the century, as
13 temperature continues to increase, it will be too warm to snow in many current snow-producing
14 situations, and precipitation will mostly be rainfall. In the southwestern United States,
15 precipitation will decrease in the spring but the changes are only a little larger than natural
16 variations. Many other regions of the country will not experience significant changes in average
17 precipitation. This is also the case over most of the country in the summer and fall.

18 **[INSERT FIGURE 7.5 HERE]**

19 This pattern of projected precipitation change arises because of changes in locally available
20 water vapor and weather system shifts. In the northern part of the continent, increases in water
21 vapor, together with changes in circulation that are the result of expansion of the Hadley cell,
22 bring more moisture to these latitudes while maintaining or increasing the frequency of
23 precipitation-producing weather systems. This change in the Hadley circulation (see Ch. 5:
24 Circulation and Variability for discussion of circulation changes) also causes the subtropics, the
25 region between the northern and southern edges of the tropics and the midlatitudes (about 35° of
26 latitude), to be drier in warmer climates as well as moving the mean storm track northward and
27 away from the subtropics, decreasing the frequency of precipitation-producing systems. The
28 combination of these two factors results in precipitation decreases in the southwestern United
29 States, Mexico, and the Caribbean (Collins et al. 2013).

30 PROJECTED CHANGES IN SNOW

31 The Third National Climate Assessment (Georgakakos et al. 2014) projected reductions in
32 annual snowpack of up to 40% in the western United States based on the SRES A2 emissions
33 scenario in the CMIP3 suite of climate model projections. Recent research using the CMIP5 suite
34 of climate model projections forced with the RCP8.5 scenario and statistically downscaled for
35 the western United States continues to show the expected declines in various snow metrics,
36 including snow water equivalent, the number of extreme snowfall events, and number of
37 snowfall days (Lute et al. 2015). A northward shift in the rain–snow transition zone in the central

1 and eastern United States was found using statistically downscaled CMIP5 simulations forced
2 with RCP8.5. By the end of the 21st century, large areas that are currently snow-dominated in
3 the cold season are expected to be rainfall dominated (Ning and Bradley 2015).

4 The Variable Infiltration Capacity (VIC) model has been used to investigate the potential effects
5 of climate change on SWE. Declines in SWE are projected in all western U.S. mountain ranges
6 during the 21st century with the virtual disappearance of snowpack in the southernmost
7 mountains by the end of the 21st century under both the RCP4.5 and RCP8.5 scenarios (Gergel
8 et al. 2017). The projected decreases are most robust at the lower elevations of areas where
9 snowpack accumulation is now reliable (for example, the Cascades and northern Sierra Nevada
10 ranges). In these areas, future decreases in SWE are largely driven by increases in temperature.
11 At higher (colder) elevations, projections are driven more by precipitation changes and are thus
12 more uncertain.

13 **7.2.2 Extremes**

14 **HEAVY PRECIPITATION EVENTS**

15 Studies project that the observed increase in heavy precipitation events will continue in the future
16 (e.g. Janssen et al. 2014, 2016). Similar to observed changes, increases are expected in all
17 regions, even those regions where total precipitation is projected to decline, such as the
18 southwestern United States. Under the RCP8.5 scenario the number of extreme events
19 (exceeding a 5-year return period) increases by two to three times the historical average in every
20 region (Figure 7.6) by the end of the 21st century, with the largest increases in the Northeast.
21 Under the RCP4.5 scenario, increases are 50%–100%. Research shows that there is strong
22 evidence, both from the observed record and modeling studies, that increased water vapor
23 resulting from higher temperatures is the primary cause of the increases (Kunkel et al. 2013a,b;
24 Wehner 2013). Additional effects on extreme precipitation due to changes in dynamical
25 processes are poorly understood. However atmospheric rivers (ARs), especially along the West
26 Coast of the United States, are projected to increase in number and water vapor transport
27 (Dettinger 2011) and experience landfall at lower latitudes (Shields and Kiehl 2016) by the end
28 of the 21st century.

29 **[INSERT FIGURE 7.6 HERE]**

30 Projections of changes in the 20-year return period amount for daily precipitation (Figure 7.7)
31 using Locally Constructed Analogs (LOCA) downscaled data also show large percentage
32 increases for both the middle and late 21st century. The lower emissions projections (RCP4.5)
33 show increases of around 10% for mid-century and up to 14% for the late century projections.
34 The higher emissions projections show even larger increases for both mid-century and late
35 century projections, with increases of around 20% by late 20th century. No region in either
36 emissions scenario shows a decline in heavy precipitation. The increases in extreme precipitation

1 tend to increase with return level, such that increases for the 100-year return level are about 30%
2 by the end of the century under a high emissions scenario.

3 **[INSERT FIGURE 7.7 HERE]**

4 Projections of changes in the distribution of daily precipitation amounts (Figure 7.8) indicate an
5 overall more extreme precipitation climate. Specifically, the projections indicate a slight increase
6 in the numbers of dry days and the very lightest precipitation days and a large increase in the
7 heaviest days. The number of days with precipitation amounts greater than the 95th percentile of
8 all non-zero precipitation days increases by more than 25%. At the same time, the number of
9 days with precipitation amounts in the 10th–80th percentile range decreases.

10 **[INSERT FIGURE 7.8 HERE]**

11 Most global climate models lack sufficient resolution to project changes in MCSs in a changing
12 climate (Kooperman et al. 2013). However, research by Cook et al. (2008) attempted to identify
13 clues to changes in dynamical forcing that create MCSs. To do this, they examined the ability of
14 18 coupled ocean–atmosphere global climate models (GCMs) to simulate potential 21st century
15 changes in warm-season flow and the associated U.S. Midwest hydrology resulting from
16 increases in greenhouse gases. They selected a subset of six models that best captured the low-
17 level flow and associated dynamics of the present-day climate of the central United States and
18 then analyzed these models for changes due to enhanced greenhouse gas forcing. In each of these
19 models, springtime precipitation increases significantly (by 20%–40%) in the upper Mississippi
20 Valley and decreases to the south. The enhanced moisture convergence leading to modeled
21 future climate rainfall increases in the U.S. Midwest is caused by meridional convergence at 850
22 hPa, connecting the rainfall changes with the Great Plains Low-Level Jet intensification (Higgins
23 et al. 1997). This is consistent with findings from Feng et al. (2016) in the observational record
24 for the period 1979–2014 and by Pan et al. (2004) by use of a regional climate model.

25 Changes in intense hourly precipitation events were simulated by Prein et al. 2017 where they
26 found the most intense hourly events (99.9 percentile) in the central United States increase at the
27 expense of moderate intense (97.5 percentile) hourly events in the warm season. They also found
28 the frequency of seasonal hourly precipitation extremes is expected to increase in all regions by
29 up to five times in the same areas that show the highest increases in extreme precipitation rates.

30 **HURRICANE PRECIPITATION**

31 Regional model projections of precipitation from landfalling tropical cyclones over the United
32 States, based on downscaling of CMIP5 model climate changes, suggest that the occurrence
33 frequency of post-landfall tropical cyclones over the United States will change little compared to
34 present day during the 21st century, as the reduced frequency of tropical cyclones over the
35 Atlantic domain is mostly offset by a greater landfalling fraction. However, when downscaling
36 from CMIP3 model climate changes, projections showed a reduced occurrence frequency over

1 U.S. land, indicating uncertainty about future outcomes. The average tropical cyclone rainfall
2 rates within 500 km (about 311 miles) of the storm center increased by 8% to 17% in the
3 simulations, which was at least as much as expected from the water vapor content increase factor
4 alone.

5 Several studies have projected increases of precipitation rates within hurricanes over ocean
6 regions (Knutson et al. 2010), particularly for the Atlantic basin (Knutson et al. 2013). The
7 primary physical mechanism for this increase is the enhanced water vapor content in the warmer
8 atmosphere, which enhances moisture convergence into the storm for a given circulation
9 strength, although a more intense circulation can also contribute (Wang et al. 2015). Since
10 hurricanes are responsible for many of the most extreme precipitation events in the southeastern
11 United States (Kunkel et al. 2010, 2012), such events are likely to be even heavier in the future.
12 In a set of idealized forcing experiments, this effect was partly offset by differences in warming
13 rates at the surface and at altitude (Villarini et al. 2014).

14

FINAL DRAFT

1 TRACEABLE ACCOUNTS

2 Key Finding 1

3 Annual precipitation has decreased in much of the West, Southwest, and Southeast and increased
4 in most of the Northern and Southern Plains, Midwest, and Northeast. A national average
5 increase of 4% in annual precipitation since 1901 is mostly a result of large increases in the fall
6 season. (*Medium confidence*)

7 Description of evidence base

8 The key finding and supporting text summarizes extensive evidence documented in the climate
9 science peer-reviewed literature. Evidence of long-term changes in precipitation is based on
10 analysis of daily precipitation observations from the U.S. Cooperative Observer Network
11 (<http://www.nws.noaa.gov/om/coop/>) and shown in Figure 7.1. Published work, such as the
12 Third National Climate Assessment (Melillo et al. 2014), and Figure 7.1 show important regional
13 and seasonal differences in U.S. precipitation change since 1901.

14 Major uncertainties

15 The main source of uncertainty is the sensitivity of observed precipitation trends to the spatial
16 distribution of observing stations and to historical changes in station location, rain gauges, the
17 local landscape, and observing practices. These issues are mitigated somewhat by new methods
18 to produce spatial grids through time (Vose et al. 2014).

19 Assessment of confidence based on evidence and agreement, including short description of 20 nature of evidence and level of agreement

21 Based on the evidence and understanding of the issues leading to uncertainties, confidence is
22 *medium* that average annual precipitation has increased in the United States. Furthermore,
23 confidence is also *medium* that the important regional and seasonal differences in changes
24 documented in the text and in Figure 7.1 are robust.

25 Summary sentence or paragraph that integrates the above information

26 Based on the patterns shown in Figure 7.1 and numerous additional studies of precipitation
27 changes in the United States, there is *medium confidence* in the observed changes in annual and
28 seasonal precipitation over the various regions and the United States as a whole.

29

30 Key Finding 2

31 Heavy precipitation events in most parts of the United States have increased in both intensity and
32 frequency since 1901 (*high confidence*). There are important regional differences in trends, with

1 the largest increases occurring in the northeastern United States (*high confidence*). In particular,
2 mesoscale convective systems (organized clusters of thunderstorms)—the main mechanism for
3 warm season precipitation in the central part of the United States—have increased in occurrence
4 and precipitation amounts since 1979 (*medium confidence*).

5 **Description of evidence base**

6 The key finding and supporting text summarizes extensive evidence documented in the climate
7 science peer-reviewed literature. Numerous papers have been written documenting observed
8 changes in heavy precipitation events in the United States, including those cited in the Third
9 National Climate Assessment and in this assessment. Although station based analyses (e.g.,
10 Westra et al. 2013) do not show large numbers of statistically significant station-based trends,
11 area averaging reduces the noise inherent in station-based data and produces robust increasing
12 signals (see Figures 7.2 and 7.3). Evidence of long-term changes in precipitation is based on
13 analysis of daily precipitation observations from the U.S. Cooperative Observer Network
14 (<http://www.nws.noaa.gov/om/coop/>) and shown in Figures 7.2, 7.3, and 7.4.

15 **Major uncertainties**

16 The main source of uncertainty is the sensitivity of observed precipitation trends to the spatial
17 distribution of observing stations and to historical changes in station location, rain gauges, and
18 observing practices. These issues are mitigated somewhat by methods used to produce spatial
19 grids through gridbox averaging.

20 **Assessment of confidence based on evidence and agreement, including short description of** 21 **nature of evidence and level of agreement**

22 Based on the evidence and understanding of the issues leading to uncertainties, confidence is
23 *high* that heavy precipitation events have increased in the United States. Furthermore, confidence
24 is also *high* that the important regional and seasonal differences in changes documented in the
25 text and in Figures 7.2, 7.3, and 7.4 are robust.

26 **Summary sentence or paragraph that integrates the above information**

27 Based on numerous analyses of the observed record in the United States there is *high confidence*
28 in the observed changes in heavy precipitation events, and *medium confidence* in observed
29 changes in mesoscale convective systems.

30

31 **Key Finding 3**

32 The frequency and intensity of heavy precipitation events are projected to continue to increase
33 over the 21st century (*high confidence*). Mesoscale convective systems in the central United

1 States, are expected to continue to increase in number and intensity in the future (*medium*
2 *confidence*). There are, however, important regional and seasonal differences in projected
3 changes in total precipitation: the northern United States, including Alaska, is projected to
4 receive more precipitation in the winter and spring, and parts of the southwestern United States
5 are projected to receive less precipitation in the winter and spring (*medium confidence*).

6 **Description of evidence base**

7 Evidence for future changes in precipitation is based on climate model projections and our
8 understanding of the climate system's response to increasing greenhouse gases and of regional
9 mechanisms behind the projected changes. In particular, Figure 7.7 documents projected changes
10 in the 20-year return period amount using the LOCA data, and Figure 7.6 shows changes in 2
11 day totals for the 5-year return period using the CMIP5 suite of models. Each figure shows
12 robust changes in extreme precipitation events as they are defined in the figure. However, Figure
13 7.5, which shows changes in seasonal and annual precipitation, indicate where confidence in the
14 changes is higher based on consistency between the models and that there are large areas where
15 the projected change is uncertain.

16 **Major uncertainties**

17 A key issue is how well climate models simulate precipitation, which is one of the more
18 challenging aspects of weather and climate simulation. In particular, comparisons of model
19 projections for total precipitation (from both CMIP3 and CMIP5, see Sun et al. 2015) by NCA3
20 region show a spread of responses in some regions (for example, the Southwest) such that they
21 are opposite from the ensemble average response. The continental United States is positioned in
22 the transition zone between expected drying in the sub-tropics and wetting in the mid- and
23 higher-latitudes. There are some differences in the location of this transition between CMIP3 and
24 CMIP5 models and thus there remains uncertainty in the exact location of the transition zone.

25 **Assessment of confidence based on evidence and agreement, including short description of** 26 **nature of evidence and level of agreement**

27 Based on evidence from climate model simulations and our fundamental understanding of the
28 relationship of water vapor to temperature, confidence is *high* that extreme precipitation will
29 increase in all regions of the United States. However, based on the evidence and understanding
30 of the issues leading to uncertainties, confidence is *medium* that that more total precipitation is
31 projected for the northern U.S. and less for the Southwest.

32 **Summary sentence or paragraph that integrates the above information**

33 Based on numerous analyses of model simulations and our understanding of the climate system
34 there is *high confidence* in the projected changes in precipitation extremes and *medium*
35 *confidence* in projected changes in total precipitation over the United States.

1 Key Finding 4

2 Northern Hemisphere spring snow cover extent, North America maximum snow depth, snow
3 water equivalent in the western United States, and extreme snowfall years in the southern and
4 western United States have all declined, while extreme snowfall years in parts of the northern
5 United States have increased (*medium confidence*). Projections indicate large declines in
6 snowpack in the western United States and shifts to more precipitation falling as rain than snow
7 in the cold season in many parts of the central and eastern United States (*high confidence*).

8 Description of evidence base

9 Evidence of historical changes in snow cover extent and a reduction in extreme snowfall years is
10 consistent with our understanding of the climate system's response to increasing greenhouse
11 gases. Furthermore, climate models continue to consistently show future declines in snowpack in
12 the western United States. Recent model projections for the eastern United States also confirm a
13 future shift from snowfall to rainfall during the cold season in colder portions of the central and
14 eastern United States. Each of these changes is documented in the peer-reviewed literature and
15 are cited in the main text of this chapter.

16 Major uncertainties

17 The main source of uncertainty is the sensitivity of observed snow changes to the spatial
18 distribution of observing stations and to historical changes in station location, rain gauges, and
19 observing practices, particularly for snow. Another key issue is the ability of climate models to
20 simulate precipitation, particularly snow. Future changes in the frequency and intensity of
21 meteorological systems causing heavy snow are less certain than temperature changes.

**22 Assessment of confidence based on evidence and agreement, including short description of
23 nature of evidence and level of agreement**

24 Given the evidence base and uncertainties, confidence is *medium* that snow cover extent has
25 declined in the United States and *medium* that extreme snowfall years have declined in recent
26 years. Confidence is *high* that western United States snowpack will decline in the future, and
27 confidence is *medium* that a shift from snow domination to rain domination will occur in the
28 parts of the central and eastern United States cited in the text.

29 Summary sentence or paragraph that integrates the above information

30 Based on observational analyses of snow cover, depth and water equivalent there is *medium*
31 *confidence* in the observed changes, and based on model simulations for the future there is *high*
32 *confidence* in snowpack declines in the Western United States and *medium confidence* in the
33 shift to rain from snow in the eastern United States.

34

1 **TABLE**

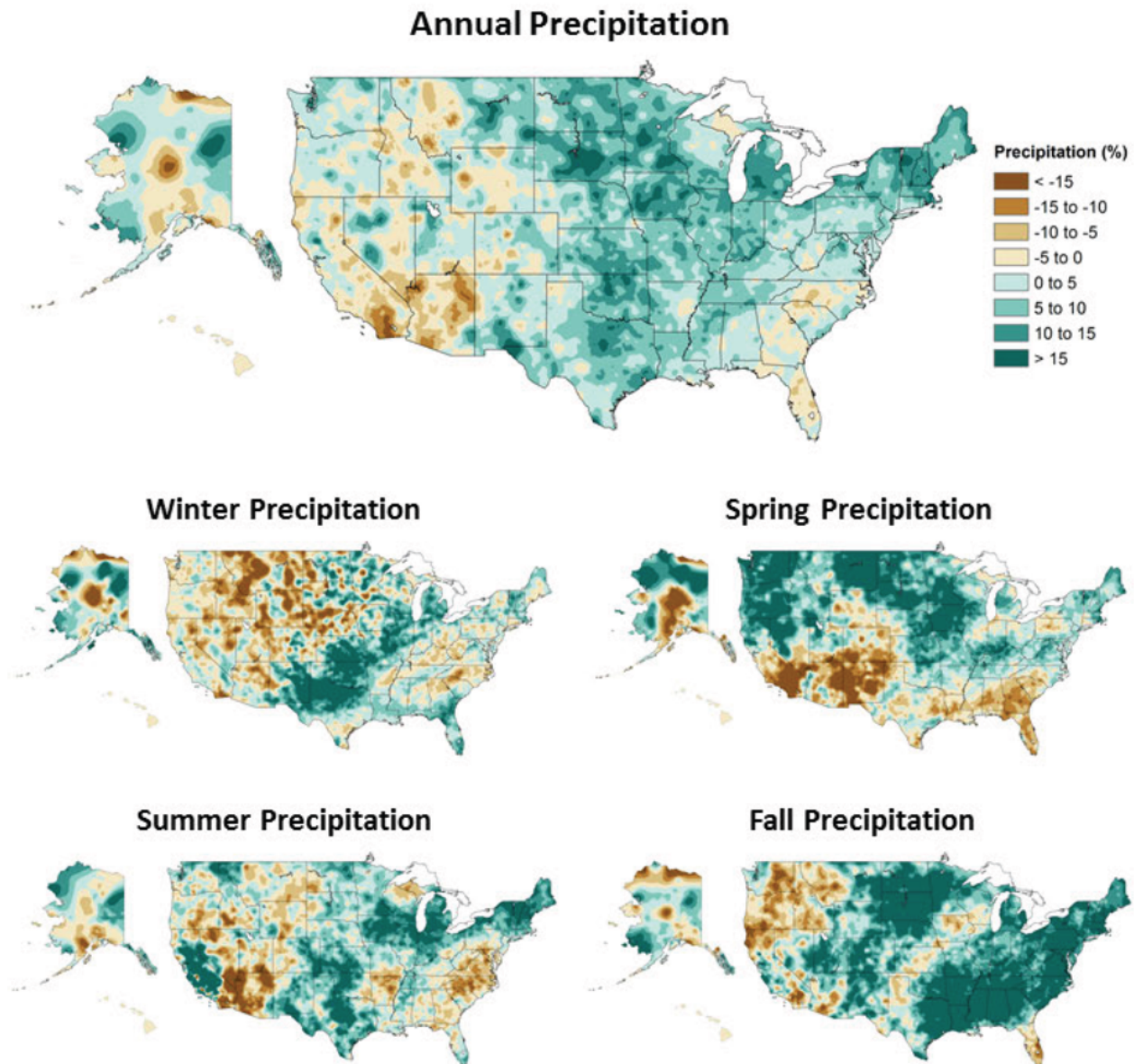
2 **Table 7.1:** A list of U.S. extreme precipitation events for which attribution statements have been
 3 made. In the last column, “+” indicates that an attributable human-induced increase in frequency
 4 and/or magnitude was found, “-“ indicates that an attributable human-induced decrease in
 5 frequency and/or magnitude was found, “0” indicates no attributable human contribution was
 6 identified. As in tables 6.1 and 8.2, several of the events were originally examined in the *Bulletin*
 7 *of the American Meteorological Society’s* (BAMS) State of the Climate Reports and reexamined
 8 by Angélil et al. (2017). In these cases, both attribution statements are listed with the original
 9 authors first. Source: M. Wehner.

Authors	Event year and duration	Region	Type	Attribution statement
Knutson et al. 2014 / Angélil et al. 2017	ANN 2013	U.S. Northern Tier	Wet	+/0
Knutson et al. 2014 / Angélil et al. 2017	MAM 2013	U.S. Upper Midwest	Wet	+/+
Knutson et al. 2014 / Angélil et al. 2017	JJA 2013	Eastern U.S. Region	Wet	+/-
Edwards et al. 2014	October 4-5, 2013	South Dakota	Blizzard	0
Hoerling et al. 2014	September 10-14, 2013	Colorado	Wet	0
Pall et al. 2017	September 10-14, 2013	Colorado	Wet	+

10

11

1 **FIGURES**

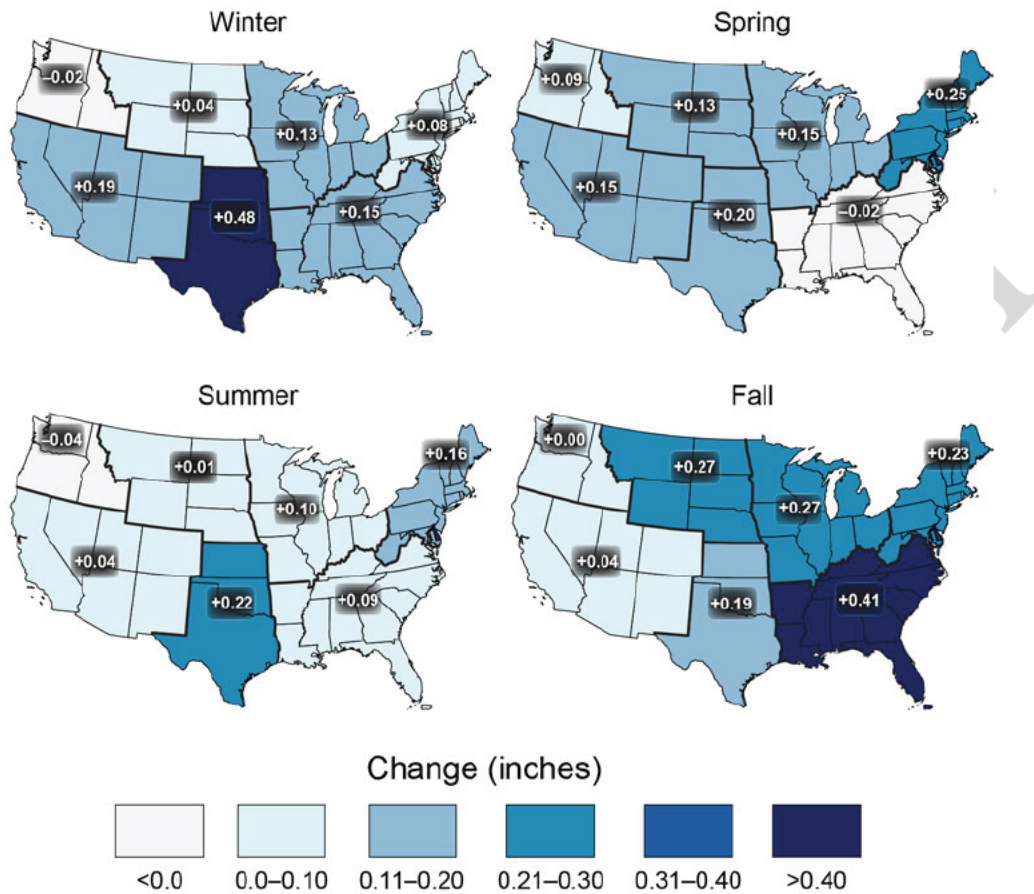


2

3 **Figure 7.1:** Annual and seasonal changes in precipitation over the contiguous United States.
 4 Changes are the average for present-day (1986–2015) minus the average for the first half of the
 5 last century (1901–1960 for the contiguous United States, 1925–1960 for Alaska and Hawaii)
 6 divided by the average for the first half of the century. (Figure source: [top panel] adapted from
 7 Peterson et al. 2013, © American Meteorological Society. Used with permission; [bottom four
 8 panels] NOAA NCEI, data source: nCLIMDiv].

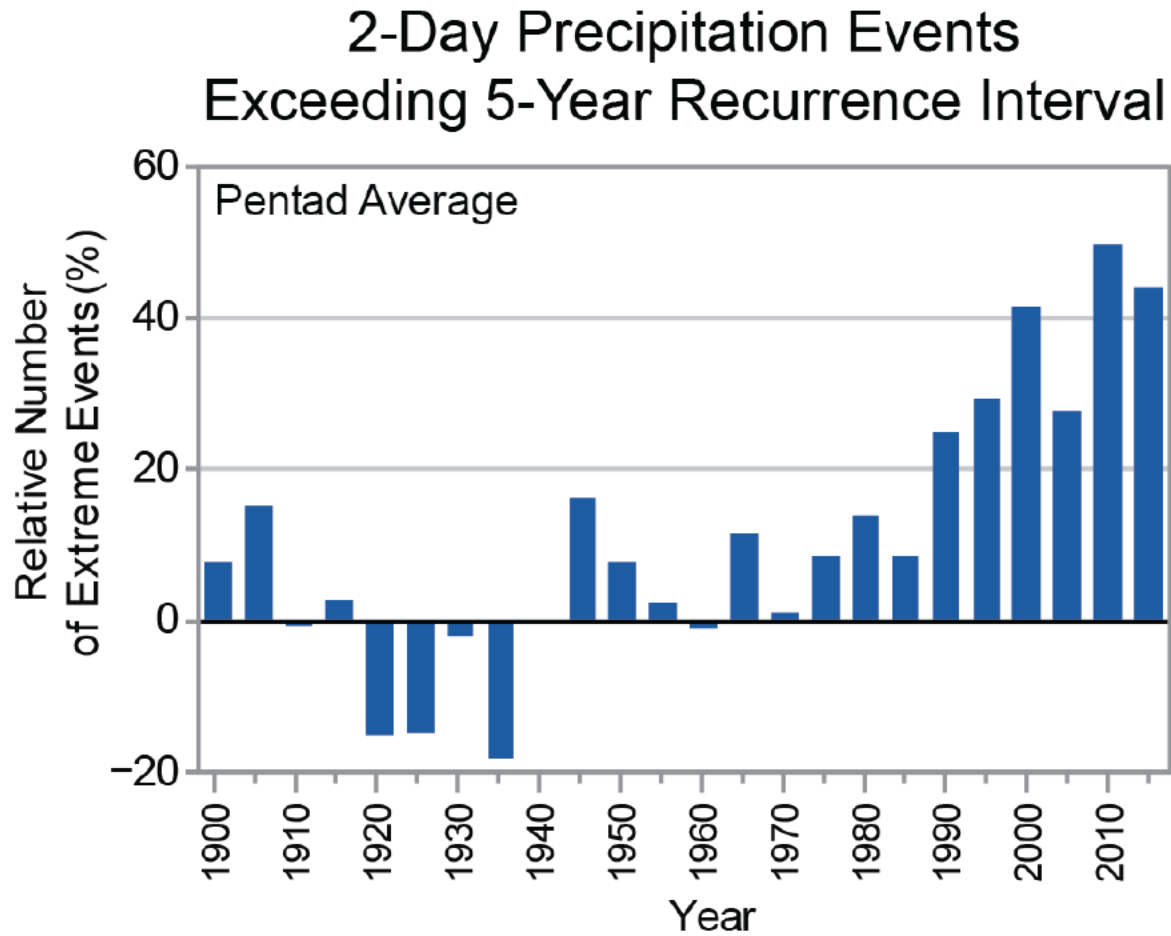
9

Observed Change in Daily, 20-year Return Level Precipitation



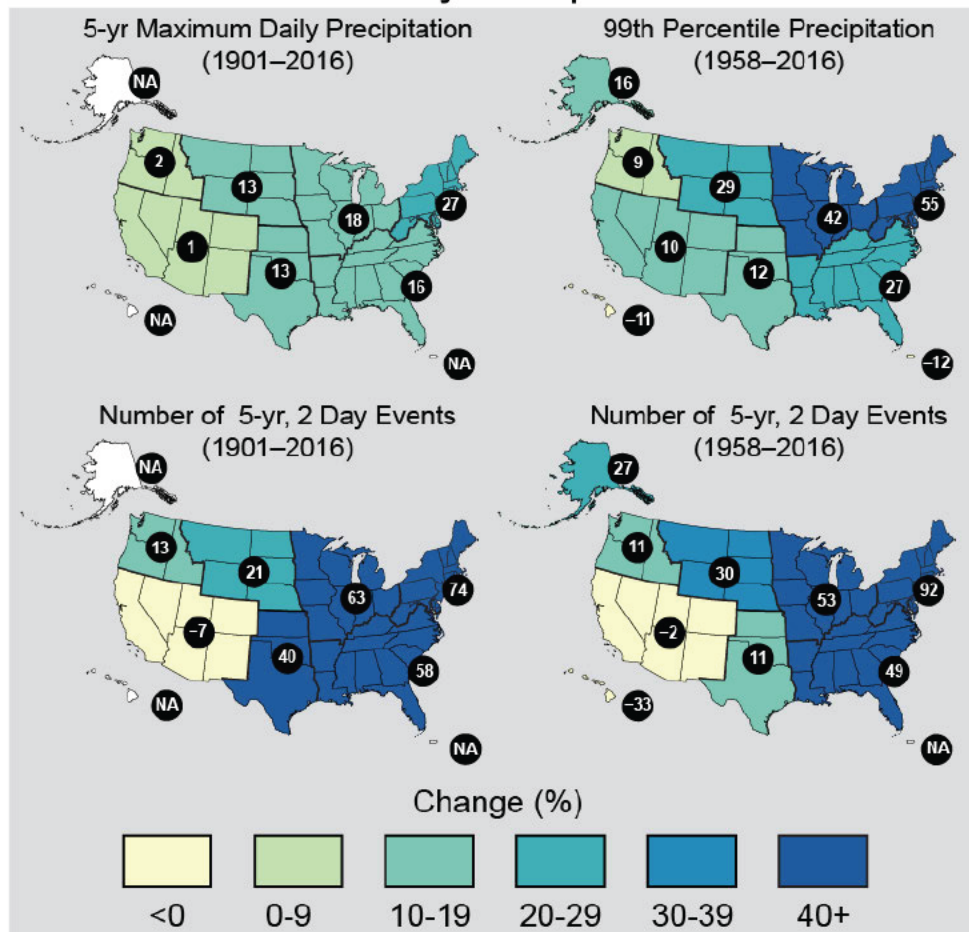
1
2
3
4
5
6
7

Figure 7.2: Observed changes in the 20-year return value of the seasonal daily precipitation totals over the period 1948 to 2015 using data from the Global Historical Climatology Network (GHCN) dataset. (Figure source: adapted from Kunkel et al. 2013; © American Meteorological Society. Used with permission.)



1
 2 **Figure 7.3:** Index of the number of 2-day precipitation events exceeding the station-specific
 3 threshold for a 5-year recurrence interval, expressed as a percentage difference from the 1901–
 4 1960 mean. The annual values are averaged over 5-year periods, with the pentad label indicating
 5 the ending year of the period. Annual time series of the number of events are first calculated at
 6 individual stations. Next, the grid box time series are calculated as the average of all stations in
 7 the grid box. Finally, a national time series is calculated as the average of the grid box time
 8 series. Data source: GHCN-Daily. (Figure source: CICS-NC / NOAA NCEI).

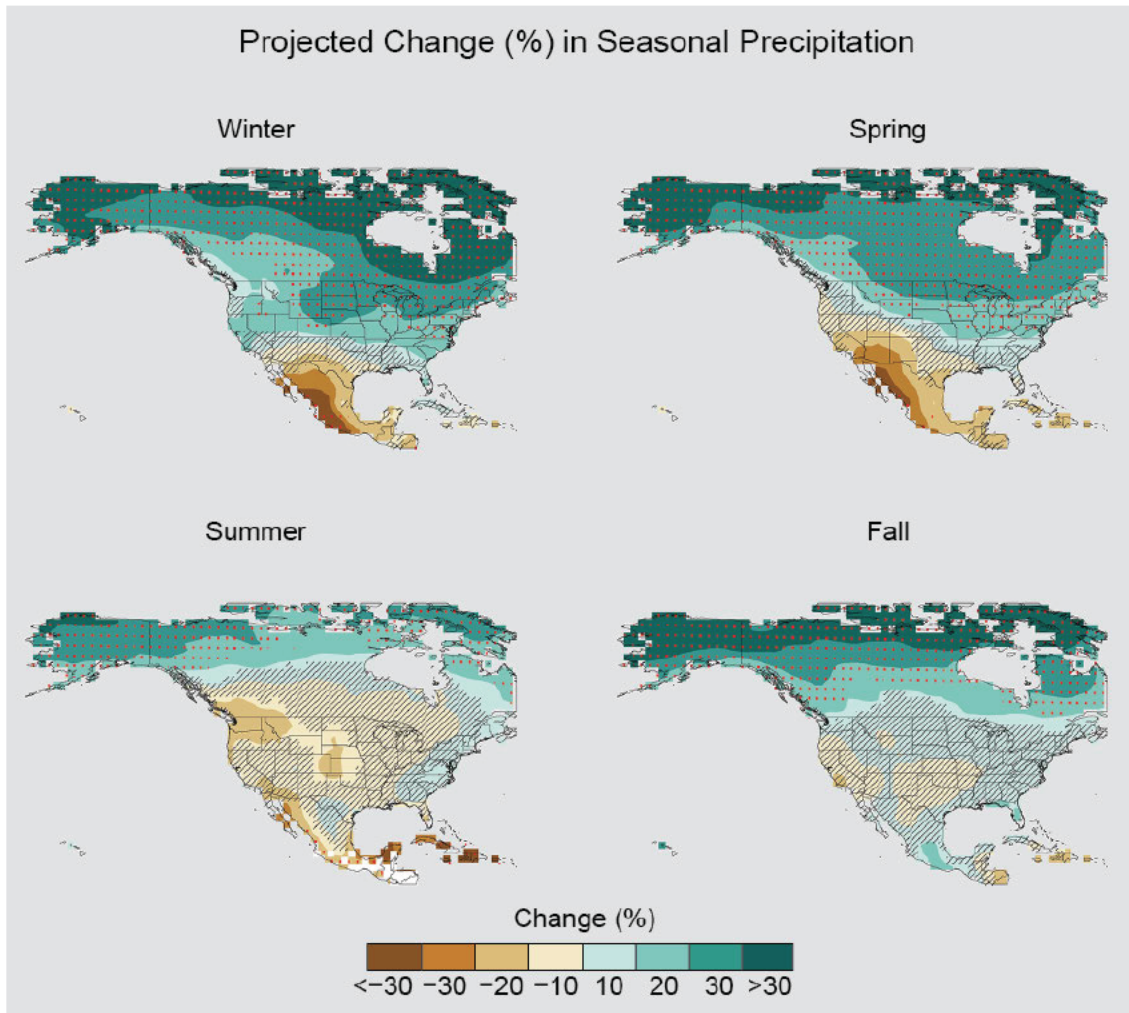
Observed Change in Heavy Precipitation



1
2
3
4
5
6
7
8
9
10
11
12
13
14
15

Figure 7.4: These maps show the change in several metrics of extreme precipitation by NCA4 region, including (upper left) the maximum daily precipitation in consecutive 5-year blocks, (upper right) the amount of precipitation falling in daily events that exceed the 99th percentile of all non-zero precipitation days, (lower left) the number of 2-day events with a precipitation total exceeding the largest 2-day amount that is expected to occur, on average, only once every 5 years, as calculated over 1901–2016, and (lower right) the number of 2-day events with a precipitation total exceeding the largest 2-day amount that is expected to occur, on average, only once every 5 years, as calculated over 1958–2016. The numerical value is the percent change over the entire period, either 1901–2016 or 1958–2016. The percentages are first calculated for individual stations, then averaged over 2° latitude by 2° longitude grid boxes, and finally averaged over each NCA4 region. Note that Alaska and Hawai‘i are not included in the 1901–2016 maps owing to a lack of observations in the earlier part of the 20th century. (Figure source: CICS-NC / NOAA NCEI).

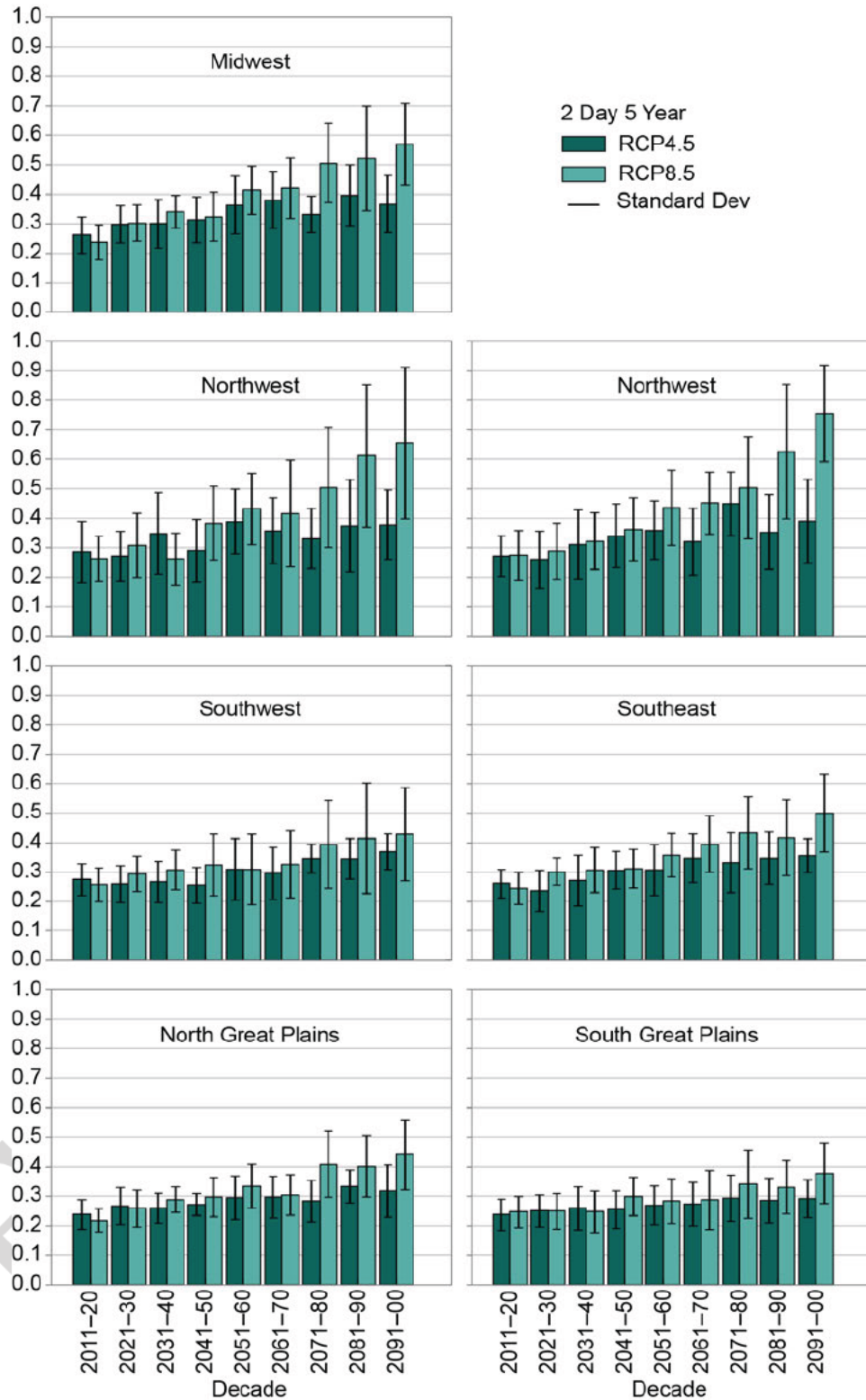
1



2

3 **Figure 7.5:** Projected change (%) in total seasonal precipitation from CMIP5 simulations for
 4 2070-2099. The values are weighted multimodel means and expressed as the percent change
 5 relative to the 1976–2005 average. These are results for the RCP8.5 pathway. Stippling indicates
 6 that changes are assessed to be large compared to natural variations. Hatching indicates that
 7 changes are assessed to be small compared to natural variations. Blank regions (if any) are where
 8 projections are assessed to be inconclusive. Data source: World Climate Research Program's
 9 (WCRP's) Coupled Model Intercomparison Project. (Figure source: NOAA NCEI).

10



1

2 **Figure 7.6:** Regional extreme precipitation event frequency for RCP4.5 (green; 16 CMIP5
 3 models) and RCP8.5 (blue; 14 CMIP5 models) for a 2-day duration and 5-year return. Calculated
 4 for 2006–2100 but decadal anomalies begin in 2011. Error bars are ± 1 standard deviation;

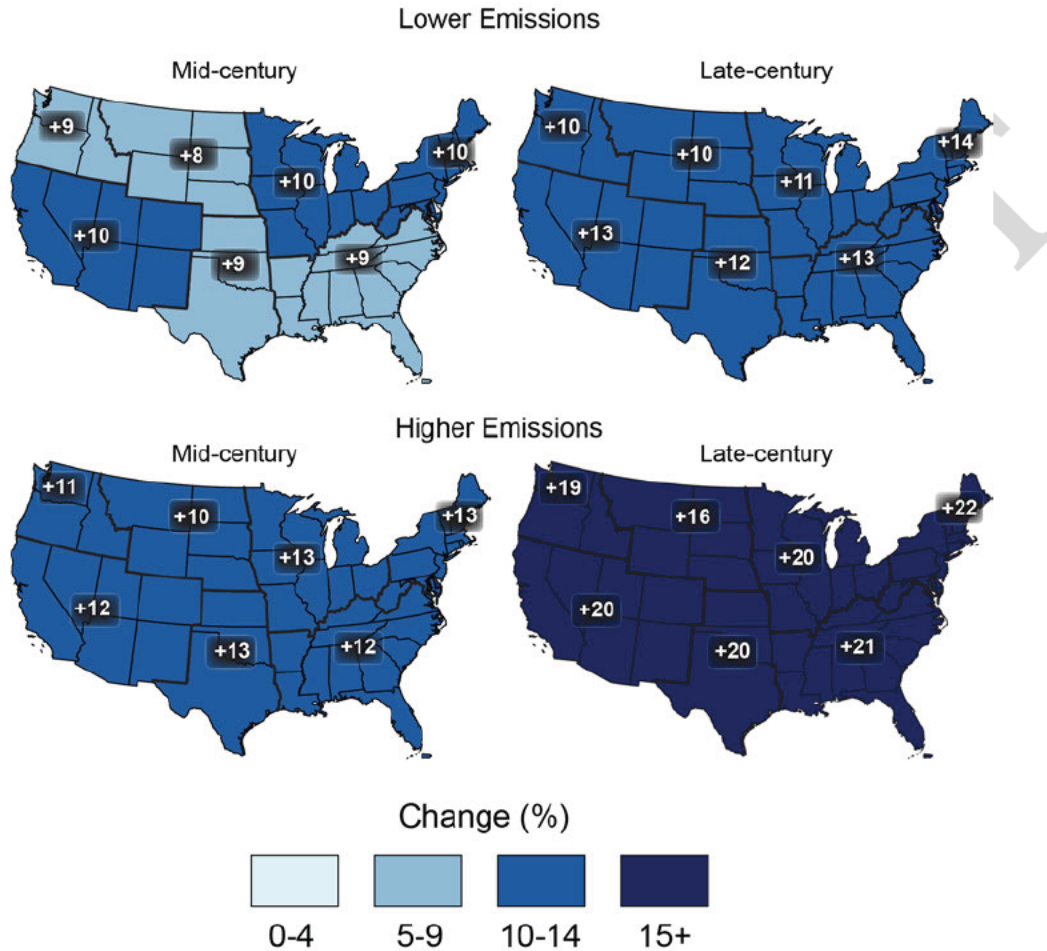
1 standard deviation is calculated from the 14 or 16 model values that represent the aggregated
2 average over the regions, over the decades, and over the ensemble members of each model. The
3 average frequency for the historical reference period is 0.2 by definition and the values in this
4 graph should be interpreted with respect to a comparison with this historical average value.
5 (Figure source: Janssen et al. 2014).

6

FINAL DRAFT

1

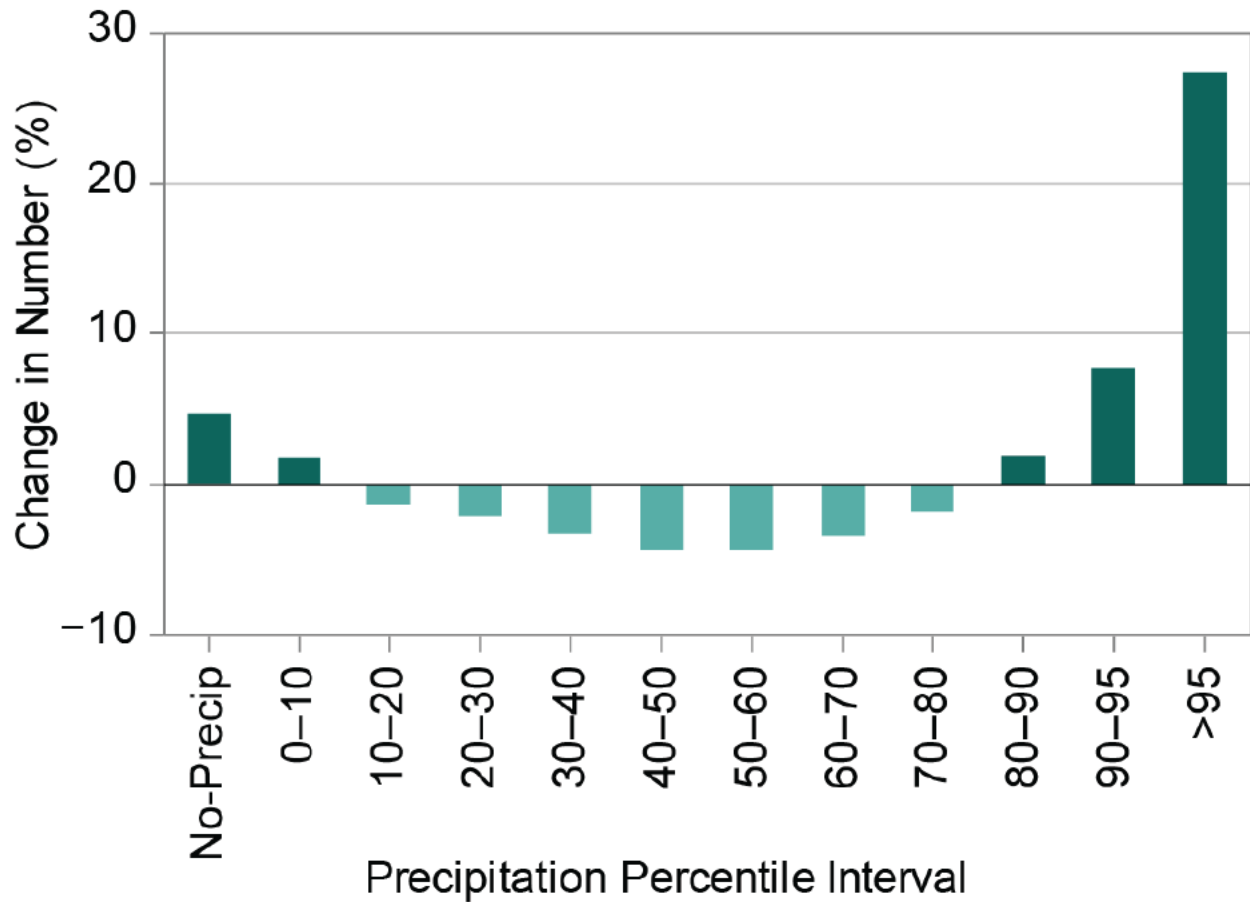
Projected Change in Daily, 20-year Extreme Precipitation



2

3 **Figure 7.7:** Projected change in the 20-year return period amount for daily precipitation for mid-
 4 (left maps) and late-21st century (right maps). Results are shown for a lower emissions scenario
 5 (top maps; RCP4.5) and for a higher emissions scenario (bottom maps, RCP8.5). These results
 6 are calculated from the LOCA downscaled data. (Figure source: CICS-NC / NOAA NCEI).

7



1
2
3
4
5
6
7
8

Figure 7.8: Projected change (percentage change relative to the 1976–2005 reference period average) in the number of daily zero (“No-Precip”) and non-zero precipitation days (by percentile bins) for late-21st century under a high emissions scenario (RCP8.5). The precipitation percentile bin thresholds are based on daily non-zero precipitation amounts from the 1976–2005 reference period that have been ranked from low to high. These results are calculated from the LOCA downscaled data. (Figure source: CICS-NC / NOAA NCEI).

1 **REFERENCES**

- 2 Anderson, B.T., D.J. Gianotti, and G.D. Salvucci, 2015: Detectability of historical trends in
3 station-based precipitation characteristics over the continental United States. *Journal of*
4 *Geophysical Research: Atmospheres*, **120**, 4842-4859.
5 <http://dx.doi.org/10.1002/2014JD022960>
- 6 Angéllil, O., D. Stone, M. Wehner, C.J. Paciorek, H. Krishnan, and W. Collins, 2017: An
7 independent assessment of anthropogenic attribution statements for recent extreme
8 temperature and rainfall events. *Journal of Climate*, **30**, 5-16. [http://dx.doi.org/10.1175/JCLI-](http://dx.doi.org/10.1175/JCLI-D-16-0077.1)
9 [D-16-0077.1](http://dx.doi.org/10.1175/JCLI-D-16-0077.1)
- 10 Bacmeister, J.T., M.F. Wehner, R.B. Neale, A. Gettelman, C. Hannay, P.H. Lauritzen, J.M.
11 Caron, and J.E. Truesdale, 2014: Exploratory high-resolution climate simulations using the
12 Community Atmosphere Model (CAM). *Journal of Climate*, **27**, 3073-3099.
13 <http://dx.doi.org/10.1175/JCLI-D-13-00387.1>
- 14 Ban, N., J. Schmidli, and C. Schär, 2014: Evaluation of the convection-resolving regional
15 climate modeling approach in decade-long simulations. *Journal of Geophysical Research:*
16 *Atmospheres*, **119**, 7889-7907. <http://dx.doi.org/10.1002/2014JD021478>
- 17 Bard, L. and D.A.R. Kristovich, 2012: Trend reversal in Lake Michigan contribution to snowfall.
18 *Journal of Applied Meteorology and Climatology*, **51**, 2038-2046.
19 <http://dx.doi.org/10.1175/jamc-d-12-064.1>
- 20 Barnston, A.G. and B. Lyon, 2016: Does the NMME capture a recent decadal shift toward
21 increasing drought occurrence in the southwestern United States? *Journal of Climate*, **29**,
22 561-581. <http://dx.doi.org/10.1175/JCLI-D-15-0311.1>
- 23 Belmecheri, S., F. Babst, E.R. Wahl, D.W. Stahle, and V. Trouet, 2016: Multi-century evaluation
24 of Sierra Nevada snowpack. *Nature Climate Change*, **6**, 2-3.
25 <http://dx.doi.org/10.1038/nclimate2809>
- 26 Boyle, J., and Stephen A. Klein, 2010: Impact of horizontal resolution on climate model
27 forecasts of tropical convection and diabatic heating for the TWP-ICE period *Journal of*
28 *Geophysical Research*, **115**, D23113, doi: 10.1029/2010JD014262 .
- 29 Bindoff, N.L., P.A. Stott, K.M. AchutaRao, M.R. Allen, N. Gillett, D. Gutzler, K. Hansingo, G.
30 Hegerl, Y. Hu, S. Jain, I.I. Mokhov, J. Overland, J. Perlwitz, R. Sebbari, and X. Zhang, 2013:
31 Detection and attribution of climate change: From global to regional. *Climate Change 2013:*
32 *The Physical Science Basis. Contribution of Working Group I to the Fifth Assessment Report*
33 *of the Intergovernmental Panel on Climate Change*. Stocker, T.F., D. Qin, G.-K. Plattner, M.
34 Tignor, S.K. Allen, J. Boschung, A. Nauels, Y. Xia, V. Bex, and P.M. Midgley, Eds.

- 1 Cambridge University Press, Cambridge, United Kingdom and New York, NY, USA, 867–
2 952. <http://www.climatechange2013.org/report/full-report/>
- 3 Chang, E.K.M., C.-G. Ma, C. Zheng, and A.M.W. Yau, 2016: Observed and projected decrease
4 in Northern Hemisphere extratropical cyclone activity in summer and its impacts on
5 maximum temperature. *Geophysical Research Letters*, **43**, 2200-2208.
6 <http://dx.doi.org/10.1002/2016GL068172>
- 7 Colle, B.A., Z. Zhang, K.A. Lombardo, E. Chang, P. Liu, and M. Zhang, 2013: Historical
8 evaluation and future prediction of eastern North American and western Atlantic
9 extratropical cyclones in the CMIP5 models during the cool season. *Journal of Climate*, **26**,
10 6882-6903. <http://dx.doi.org/10.1175/JCLI-D-12-00498.1>
- 11 Collins, M., R. Knutti, J. Arblaster, J.-L. Dufresne, T. Fichefet, P. Friedlingstein, X. Gao, W.J.
12 Gutowski, T. Johns, G. Krinner, M. Shongwe, C. Tebaldi, A.J. Weaver, and M. Wehner,
13 2013: Long-term climate change: Projections, commitments and irreversibility. *Climate*
14 *Change 2013: The Physical Science Basis. Contribution of Working Group I to the Fifth*
15 *Assessment Report of the Intergovernmental Panel on Climate Change*. Stocker, T.F., D.
16 Qin, G.-K. Plattner, M. Tignor, S.K. Allen, J. Boschung, A. Nauels, Y. Xia, V. Bex, and
17 P.M. Midgley, Eds. Cambridge University Press, Cambridge, United Kingdom and New
18 York, NY, USA, 1029–1136. <http://www.climatechange2013.org/report/full-report/>
- 19 Cook, K.H., E.K. Vizzy, Z.S. Launer, and C.M. Patricola, 2008: Springtime intensification of the
20 Great Plains low-level jet and midwest precipitation in GCM simulations of the twenty-first
21 century. *Journal of Climate*, **21**, 6321-6340. <http://dx.doi.org/10.1175/2008jcli2355.1>
- 22 Dettinger, M., 2011: Climate change, atmospheric rivers, and floods in California—a multimodel
23 analysis of storm frequency and magnitude changes. *Journal of the American Water*
24 *Resources Association*, **47**, 514-523. <http://dx.doi.org/10.1111/j.1752-1688.2011.00546.x>
- 25 Dittus, A.J., D.J. Karoly, S.C. Lewis, and L.V. Alexander, 2015: A multiregion assessment of
26 observed changes in the areal extent of temperature and precipitation extremes. *Journal of*
27 *Climate*, **28**, 9206-9220. <http://dx.doi.org/10.1175/JCLI-D-14-00753.1>
- 28 Dittus, A.J., D.J. Karoly, S.C. Lewis, L.V. Alexander, and M.G. Donat, 2016: A multiregion
29 model evaluation and attribution study of historical changes in the area affected by
30 temperature and precipitation extremes. *Journal of Climate*, **29**, 8285-8299.
31 <http://dx.doi.org/10.1175/jcli-d-16-0164.1>
- 32 Easterling, D.R., K.E. Kunkel, M.F. Wehner, and L. Sun, 2016: Detection and attribution of
33 climate extremes in the observed record. *Weather and Climate Extremes*, **11**, 17-27.
34 <http://dx.doi.org/10.1016/j.wace.2016.01.001>

- 1 Edwards, L.M., M. Bunkers, J.T. Abatzoglou, D.P. Todey, and L.E. Parker, 2014: October 2013
2 blizzard in western South Dakota [in "Explaining Extreme Events of 2013 from a Climate
3 Perspective"]. *Bulletin of the American Meteorological Society*, **95** (9), S23-S26.
4 <http://dx.doi.org/10.1175/1520-0477-95.9.S1.1>
- 5 Feng, Z., L.R. Leung, S. Hagos, R.A. Houze, C.D. Burleyson, and K. Balaguru, 2016: More
6 frequent intense and long-lived storms dominate the springtime trend in central US rainfall.
7 *Nature Communications*, **7**, 13429. <http://dx.doi.org/10.1038/ncomms13429>
- 8 Fritsch, J.M., R.J. Kane, and C.R. Chelius, 1986: The contribution of mesoscale convective
9 weather systems to the warm-season precipitation in the United States. *Journal of Climate
10 and Applied Meteorology*, **25**, 1333-1345. [http://dx.doi.org/10.1175/1520-
11 0450\(1986\)025<1333:tcomcw>2.0.co;2](http://dx.doi.org/10.1175/1520-0450(1986)025<1333:tcomcw>2.0.co;2)
- 12 Gan, T.Y., R.G. Barry, M. Gizaw, A. Gobena, and R. Balaji, 2013: Changes in North American
13 snowpacks for 1979–2007 detected from the snow water equivalent data of SMMR and
14 SSM/I passive microwave and related climatic factors. *Journal of Geophysical Research:
15 Atmospheres*, **118**, 7682–7697. <http://dx.doi.org/10.1002/jgrd.50507>
- 16 Georgakakos, A., P. Fleming, M. Dettinger, C. Peters-Lidard, T.C. Richmond, K. Reckhow, K.
17 White, and D. Yates, 2014: Ch. 3: Water resources. *Climate Change Impacts in the United
18 States: The Third National Climate Assessment*. Melillo, J.M., T.C. Richmond, and G.W.
19 Yohe, Eds. U.S. Global Change Research Program, Washington, D.C., 69-112.
20 <http://dx.doi.org/10.7930/J0G44N6T>
- 21 Gergel, D.R., B. Nijssen, J.T. Abatzoglou, D.P. Lettenmaier, and M.R. Stumbaugh, 2017: Effects
22 of climate change on snowpack and fire potential in the western USA. *Climatic Change*, **141**,
23 287-299. <http://dx.doi.org/10.1007/s10584-017-1899-y>
- 24 Hartnett, J.J., J.M. Collins, M.A. Baxter, and D.P. Chambers, 2014: Spatiotemporal snowfall
25 trends in central New York. *Journal of Applied Meteorology and Climatology*, **53**, 2685-
26 2697. <http://dx.doi.org/10.1175/jamc-d-14-0084.1>
- 27 Higgins, R.W., Y. Yao, E.S. Yarosh, J.E. Janowiak, and K.C. Mo, 1997: Influence of the Great
28 Plains low-level jet on summertime precipitation and moisture transport over the central
29 United States. *Journal of Climate*, **10**, 481-507. [http://dx.doi.org/10.1175/1520-
30 0442\(1997\)010<0481:iotgpl>2.0.co;2](http://dx.doi.org/10.1175/1520-0442(1997)010<0481:iotgpl>2.0.co;2)
- 31 Hoerling, M., K. Wolter, J. Perlwitz, X. Quan, J. Eischeid, H. Want, S. Schubert, H. Diaz, and R.
32 Dole, 2014: Northeast Colorado extreme rains interpreted in a climate change context [in
33 "Explaining Extreme Events of 2013 from a Climate Perspective"]. *Bulletin of the American
34 Meteorological Society*, **95** (9), S15-S18. <http://dx.doi.org/10.1175/1520-0477-95.9.S1.1>

- 1 Janssen, E., D.J. Wuebbles, K.E. Kunkel, S.C. Olsen, and A. Goodman, 2014: Observational-
2 and model-based trends and projections of extreme precipitation over the contiguous United
3 States. *Earth's Future*, **2**, 99-113. <http://dx.doi.org/10.1002/2013EF000185>
- 4 Janssen, E., R.L. Sriver, D.J. Wuebbles, and K.E. Kunkel, 2016: Seasonal and regional variations
5 in extreme precipitation event frequency using CMIP5. *Geophysical Research Letters*, **43**,
6 5385-5393. <http://dx.doi.org/10.1002/2016GL069151>
- 7 Kay, J.E., C. Deser, A. Phillips, A. Mai, C. Hannay, G. Strand, J.M. Arblaster, S.C. Bates, G.
8 Danabasoglu, J. Edwards, M. Holland, P. Kushner, J.-F. Lamarque, D. Lawrence, K.
9 Lindsay, A. Middleton, E. Munoz, R. Neale, K. Oleson, L. Polvani, and M. Vertenstein,
10 2015: The Community Earth System Model (CESM) large ensemble project: A community
11 resource for studying climate change in the presence of internal climate variability. *Bulletin*
12 *of the American Meteorological Society*, **96 (12)**, 1333-1349.
13 <http://dx.doi.org/10.1175/BAMS-D-13-00255.1>
- 14 Kluver, D. and D. Leathers, 2015: Regionalization of snowfall frequency and trends
15 over the contiguous United States. *International Journal of Climatology*, **35**, 4348-4358.
16 <http://dx.doi.org/10.1002/joc.4292>
- 17 Knutson, T.R., J.L. McBride, J. Chan, K. Emanuel, G. Holland, C. Landsea, I. Held, J.P. Kossin,
18 A.K. Srivastava, and M. Sugi, 2010: Tropical cyclones and climate change. *Nature*
19 *Geoscience*, **3**, 157-163. <http://dx.doi.org/10.1038/ngeo779>
- 20 Knutson, T.R., J.J. Sirutis, G.A. Vecchi, S. Garner, M. Zhao, H.-S. Kim, M. Bender, R.E.
21 Tuleya, I.M. Held, and G. Villarini, 2013: Dynamical downscaling projections of twenty-
22 first-century Atlantic hurricane activity: CMIP3 and CMIP5 model-based scenarios. *Journal*
23 *of Climate*, **27**, 6591-6617. <http://dx.doi.org/10.1175/jcli-d-12-00539.1>
- 24 Knutson, T.R., F. Zeng, and A.T. Wittenberg, 2014: Seasonal and annual mean precipitation
25 extremes occurring during 2013: A U.S. focused analysis [in "Explaining Extreme Events of
26 2013 from a Climate Perspective"]. *Bulletin of the American Meteorological Society*, **95 (9)**,
27 S19-S23. <http://dx.doi.org/10.1175/1520-0477-95.9.S1.1>
- 28 Kooperman, G.J., M.S. Pritchard, and R.C.J. Somerville, 2013: Robustness and sensitivities of
29 central U.S. summer convection in the super-parameterized CAM: Multi-model
30 intercomparison with a new regional EOF index. *Geophysical Research Letters*, **40**, 3287-
31 3291. <http://dx.doi.org/10.1002/grl.50597>
- 32 Kunkel, K.E., D.R. Easterling, D.A.R. Kristovich, B. Gleason, L. Stoecker, and R. Smith, 2010:
33 Recent increases in U.S. heavy precipitation associated with tropical cyclones. *Geophysical*
34 *Research Letters*, **37**, L24706. <http://dx.doi.org/10.1029/2010GL045164>

- 1 Kunkel, K.E., D.R. Easterling, D.A. Kristovich, B. Gleason, L. Stoecker, and R. Smith, 2012:
2 Meteorological causes of the secular variations in observed extreme precipitation events for
3 the conterminous United States. *Journal of Hydrometeorology*, **13**, 1131-1141.
4 <http://dx.doi.org/10.1175/JHM-D-11-0108.1>
- 5 Kunkel, K.E., T.R. Karl, H. Brooks, J. Kossin, J. Lawrimore, D. Arndt, L. Bosart, D. Changnon,
6 S.L. Cutter, N. Doesken, K. Emanuel, P.Y. Groisman, R.W. Katz, T. Knutson, J. O'Brien,
7 C.J. Paciorek, T.C. Peterson, K. Redmond, D. Robinson, J. Trapp, R. Vose, S. Weaver, M.
8 Wehner, K. Wolter, and D. Wuebbles, 2013: Monitoring and understanding trends in extreme
9 storms: State of knowledge. *Bulletin of the American Meteorological Society*, **94**.
10 <http://dx.doi.org/10.1175/BAMS-D-11-00262.1>
- 11 Kunkel, K.E., T.R. Karl, D.R. Easterling, K. Redmond, J. Young, X. Yin, and P. Hennon, 2013:
12 Probable maximum precipitation and climate change. *Geophysical Research Letters*, **40**,
13 1402-1408. <http://dx.doi.org/10.1002/grl.50334>
- 14 Kunkel, K.E., D.A. Robinson, S. Champion, X. Yin, T. Estilow, and R.M. Frankson, 2016:
15 Trends and extremes in Northern Hemisphere snow characteristics. *Current Climate Change*
16 *Reports*, **2**, 65-73. <http://dx.doi.org/10.1007/s40641-016-0036-8>
- 17 Luce, C.H., J.T. Abatzoglou and Z.A. Holden, Z.A., 2013: The missing mountain water: Slower
18 westerlies decrease orographic enhancement in the Pacific Northwest USA. *Science*, **342**,
19 1360-1364
- 20 Lute, A.C. and J.T. Abatzoglou, 2014: Role of extreme snowfall events in interannual variability
21 of snowfall accumulation in the western United States. *Water Resources Research*, **50**, 2874-
22 2888. <http://dx.doi.org/10.1002/2013WR014465>
- 23 Lute, A.C., J.T. Abatzoglou, and K.C. Hegewisch, 2015: Projected changes in snowfall extremes
24 and interannual variability of snowfall in the western United States. *Water Resources*
25 *Research*, **51**, 960-972. <http://dx.doi.org/10.1002/2014WR016267>
- 26 Mearns, L.O., R. Arritt, S. Biner, M.S. Bukovsky, S. Stain, S. Sain, D. Caya, J. Correia, Jr., D.
27 Flory, W. Gutowski, E.S. Takle, R. Jones, R. Leung, W. Moufouma-Okia, L. McDaniel,
28 A.M.B. Nunes, Y. Qian, J. Roads, L. Sloan, and M. Snyder, 2012: The North American
29 regional climate change assessment program: Overview of phase I results. *Bulletin of the*
30 *American Meteorological Society*, **93**, 1337-1362. <http://dx.doi.org/10.1175/BAMS-D-11-00223.1>
31
- 32 Melillo, J. M., T. C. Richmond, and G. W. Yohe, Eds., 2014: *Climate Change Impacts in the*
33 *United States: The Third National Climate Assessment*. U.S. Global Change Research
34 Program, 841 pp.

- 1 Min, S.K., X. Zhang, F.W. Zwiers, and G.C. Hegerl, 2011: Human contribution to more-intense
2 precipitation extremes. *Nature*, **470**, 378-381. <http://dx.doi.org/10.1038/nature09763>
- 3 Min, S.-K., X. Zhang, F. Zwiers, H. Shiogama, Y.-S. Tung, and M. Wehner, 2013: Multimodel
4 detection and attribution of extreme temperature changes. *Journal of Climate*, **26**, 7430-7451.
5 <http://dx.doi.org/10.1175/JCLI-D-12-00551.1>
- 6 Nesbitt, S.W., R. Cifelli, and S.A. Rutledge, 2006: Storm morphology and rainfall characteristics
7 of TRMM precipitation features. *Monthly Weather Review*, **134**, 2702-2721.
8 <http://dx.doi.org/10.1175/mwr3200.1>
- 9 Ning, L. and R.S. Bradley, 2015: Snow occurrence changes over the central and eastern United
10 States under future warming scenarios. *Scientific Reports*, **5**, 17073.
11 <http://dx.doi.org/10.1038/srep17073>
- 12 NOAA, 2016: Climate at a Glance. [http://www.ncdc.noaa.gov/cag/time-](http://www.ncdc.noaa.gov/cag/time-series/us/107/0/pdsi/12/12/1895-2016?base_prd=true&firstbaseyear=1901&lastbaseyear=2000)
13 [series/us/107/0/pdsi/12/12/1895-](http://www.ncdc.noaa.gov/cag/time-series/us/107/0/pdsi/12/12/1895-2016?base_prd=true&firstbaseyear=1901&lastbaseyear=2000)
14 [2016?base_prd=true&firstbaseyear=1901&lastbaseyear=2000](http://www.ncdc.noaa.gov/cag/time-series/us/107/0/pdsi/12/12/1895-2016?base_prd=true&firstbaseyear=1901&lastbaseyear=2000)
- 15 NOAA, 2016: Climate at a Glance. [http://www.ncdc.noaa.gov/cag/time-](http://www.ncdc.noaa.gov/cag/time-series/us/4/0/pdsi/12/9/1895-2016?base_prd=true&firstbaseyear=1901&lastbaseyear=2000)
16 [series/us/4/0/pdsi/12/9/1895-2016?base_prd=true&firstbaseyear=1901&lastbaseyear=2000](http://www.ncdc.noaa.gov/cag/time-series/us/4/0/pdsi/12/9/1895-2016?base_prd=true&firstbaseyear=1901&lastbaseyear=2000)
- 17 O'Gorman, P.A., 2014: Contrasting responses of mean and extreme snowfall to climate change.
18 *Nature*, **512**, 416-418. <http://dx.doi.org/10.1038/nature13625>
- 19 Pall, P.C.M.P., M.F. Wehner, D.A. Stone, C.J. Paciorek, and W.D. Collins, 2017: Diagnosing
20 anthropogenic contributions to heavy Colorado rainfall in September 2013. *Weather and*
21 *Climate Extremes*, **In Press**. <http://dx.doi.org/10.1016/j.wace.2017.03.004>
- 22 Pan, Z., R.W. Arritt, E.S. Takle, W.J. Gutowski, Jr., C.J. Anderson, and M. Segal, 2004: Altered
23 hydrologic feedback in a warming climate introduces a "warming hole". *Geophysical*
24 *Research Letters*, **31**, L17109. <http://dx.doi.org/10.1029/2004GL020528>
- 25 Pederson, G.T., J.L. Betancourt, and G.J. McCabe, 2013: Regional patterns and proximal causes
26 of the recent snowpack decline in the Rocky Mountains, U.S. *Geophysical Research Letters*,
27 **40**, 1811-1816. <http://dx.doi.org/10.1002/grl.50424>
- 28 Peterson, T.C., R.R. Heim, R. Hirsch, D.P. Kaiser, H. Brooks, N.S. Diffenbaugh, R.M. Dole, J.P.
29 Giovannetone, K. Guirguis, T.R. Karl, R.W. Katz, K. Kunkel, D. Lettenmaier, G.J. McCabe,
30 C.J. Paciorek, K.R. Ryberg, S. Schubert, V.B.S. Silva, B.C. Stewart, A.V. Vecchia, G.
31 Villarini, R.S. Vose, J. Walsh, M. Wehner, D. Wolock, K. Wolter, C.A. Woodhouse, and D.
32 Wuebbles, 2013: Monitoring and understanding changes in heat waves, cold waves, floods
33 and droughts in the United States: State of knowledge. *Bulletin of the American*
34 *Meteorological Society*, **94**, 821-834. <http://dx.doi.org/10.1175/BAMS-D-12-00066.1>

- 1 Pfahl, S., P.A. O’Gorman, and M.S. Singh, 2015: Extratropical cyclones in idealized simulations
2 of changed climates. *Journal of Climate*, **28**, 9373-9392. [http://dx.doi.org/10.1175/JCLI-D-](http://dx.doi.org/10.1175/JCLI-D-14-00816.1)
3 [14-00816.1](http://dx.doi.org/10.1175/JCLI-D-14-00816.1)
- 4 Prein, A.F., R.M. Rasmussen, K. Ikeda, C. Liu, M.P. Clark, and G.J. Holland, 2017: The future
5 intensification of hourly precipitation extremes. *Nature Climate Change*, **7**, 48-52.
6 <http://dx.doi.org/10.1038/nclimate3168>
- 7 Rasmussen, R., C. Liu, K. Ikeda, D. Gochis, D. Yates, F. Chen, M. Tewari, M. Barlage, J.
8 Dudhia, W. Yu, K. Miller, K. Arsenault, V. Grubišić, G. Thompson, and E. Gutmann, 2011:
9 High-resolution coupled climate runoff simulations of seasonal snowfall over Colorado: A
10 process study of current and warmer climate. *Journal of Climate*, **24**, 3015-3048.
11 <http://dx.doi.org/10.1175/2010JCLI3985.1>
- 12 Rauscher, S.A., J.S. Pal, N.S. Diffenbaugh, and M.M. Benedetti, 2008: Future changes in
13 snowmelt-driven runoff timing over the western US. *Geophysical Research Letters*, **35**,
14 L16703. <http://dx.doi.org/10.1029/2008GL034424>
- 15 Sakaguchi, K., L.R. Leung, C. Zhao, Q. Yang, J. Lu, S. Hagos, S.A. Rauscher, L. Dong, T.D.
16 Ringler, and P.H. Lauritzen, 2015: Exploring a multiresolution approach using AMIP
17 simulations. *Journal of Climate*, **28**, 5549-5574. [http://dx.doi.org/10.1175/JCLI-D-14-](http://dx.doi.org/10.1175/JCLI-D-14-00729.1)
18 [00729.1](http://dx.doi.org/10.1175/JCLI-D-14-00729.1)
- 19 Schumacher, R.S. and R.H. Johnson, 2006: Characteristics of U.S. extreme rain events during
20 1999–2003. *Weather and Forecasting*, **21**, 69-85. <http://dx.doi.org/10.1175/waf900.1>
- 21 Seager, R., M. Hoerling, S. Schubert, H. Wang, B. Lyon, A. Kumar, J. Nakamura, and N.
22 Henderson, 2015: Causes of the 2011–14 California drought. *Journal of Climate*, **28**, 6997-
23 7024. <http://dx.doi.org/10.1175/JCLI-D-14-00860.1>
- 24 Shepherd, T.G., 2014: Atmospheric circulation as a source of uncertainty in climate change
25 projections. *Nature Geoscience*, **7**, 703-708. <http://dx.doi.org/10.1038/ngeo2253>
- 26 Shields, C.A. and J.T. Kiehl, 2016: Atmospheric river landfall-latitude changes in future climate
27 simulations. *Geophysical Research Letters*, **43**, 8775-8782.
28 <http://dx.doi.org/10.1002/2016GL070470>
- 29 Sun, L., K.E. Kunkel, L.E. Stevens, A. Buddenberg, J.G. Dobson, and D.R. Easterling, 2015:
30 Regional Surface Climate Conditions in CMIP3 and CMIP5 for the United States:
31 Differences, Similarities, and Implications for the U.S. National Climate Assessment.
32 National Oceanic and Atmospheric Administration, National Environmental Satellite, Data,
33 and Information Service, 111 pp. <http://dx.doi.org/10.7289/V5RB72KG>

- 1 Taylor, K.E., R.J. Stouffer, and G.A. Meehl, 2012: An overview of CMIP5 and the experiment
2 design. *Bulletin of the American Meteorological Society*, **93**, 485-498.
3 <http://dx.doi.org/10.1175/BAMS-D-11-00094.1>
- 4 Vaughan, D.G., J.C. Comiso, I. Allison, J. Carrasco, G. Kaser, R. Kwok, P. Mote, T. Murray, F.
5 Paul, J. Ren, E. Rignot, O. Solomina, K. Steffen, and T. Zhang, 2013: Observations:
6 Cryosphere. *Climate Change 2013: The Physical Science Basis. Contribution of Working*
7 *Group I to the Fifth Assessment Report of the Intergovernmental Panel on Climate Change.*
8 Stocker, T.F., D. Qin, G.-K. Plattner, M. Tignor, S.K. Allen, J. Boschung, A. Nauels, Y. Xia,
9 V. Bex, and P.M. Midgley, Eds. Cambridge University Press, Cambridge, United Kingdom
10 and New York, NY, USA, 317–382. <http://www.climatechange2013.org/report/full-report/>
- 11 Vavrus, S., M. Notaro, and A. Zarrin, 2013: The role of ice cover in heavy lake-effect
12 snowstorms over the Great Lakes Basin as simulated by RegCM4. *Monthly Weather Review*,
13 **141**, 148-165. <http://dx.doi.org/10.1175/mwr-d-12-00107.1>
- 14 Villarini, G., D.A. Lavers, E. Scoccimarro, M. Zhao, M.F. Wehner, G.A. Vecchi, T.R. Knutson,
15 and K.A. Reed, 2014: Sensitivity of tropical cyclone rainfall to idealized global-scale
16 forcings. *Journal of Climate*, **27**, 4622-4641. <http://dx.doi.org/10.1175/JCLI-D-13-00780.1>
- 17 Vose, R.S., S. Applequist, M. Squires, I. Durre, M.J. Menne, C.N. Williams, Jr., C. Fenimore, K.
18 Gleason, and D. Arndt, 2014: Improved historical temperature and precipitation time series
19 for U.S. climate divisions. *Journal of Applied Meteorology and Climatology*, **53**, 1232-1251.
20 <http://dx.doi.org/10.1175/JAMC-D-13-0248.1>
- 21 Walsh, J., D. Wuebbles, K. Hayhoe, J. Kossin, K. Kunkel, G. Stephens, P. Thorne, R. Vose, M.
22 Wehner, J. Willis, D. Anderson, S. Doney, R. Feely, P. Hennon, V. Kharin, T. Knutson, F.
23 Landerer, T. Lenton, J. Kennedy, and R. Somerville, 2014: Ch. 2: Our changing climate.
24 *Climate Change Impacts in the United States: The Third National Climate Assessment.*
25 Melillo, J.M., T.C. Richmond, and G.W. Yohe, Eds. U.S. Global Change Research Program,
26 Washington, D.C., 19-67. <http://dx.doi.org/10.7930/J0KW5CXT>
- 27 Wang, C.-C., B.-X. Lin, C.-T. Chen, and S.-H. Lo, 2015: Quantifying the effects of long-term
28 climate change on tropical cyclone rainfall using a cloud-resolving model: Examples of two
29 landfall typhoons in Taiwan. *Journal of Climate*, **28**, 66-85. [http://dx.doi.org/10.1175/JCLI-](http://dx.doi.org/10.1175/JCLI-D-14-00044.1)
30 [D-14-00044.1](http://dx.doi.org/10.1175/JCLI-D-14-00044.1)
- 31 Wehner, M.F., 2013: Very extreme seasonal precipitation in the NARCCAP ensemble: Model
32 performance and projections. *Climate Dynamics*, **40**, 59-80.
33 <http://dx.doi.org/10.1007/s00382-012-1393-1>
- 34 Wehner, M.F., K.A. Reed, F. Li, Prabhat, J. Bacmeister, C.-T. Chen, C. Paciorek, P.J. Gleckler,
35 K.R. Sperber, W.D. Collins, A. Gettelman, and C. Jablonowski, 2014: The effect of

- 1 horizontal resolution on simulation quality in the Community Atmospheric Model, CAM5.1.
2 *Journal of Advances in Modeling Earth Systems*, **6**, 980-997.
3 <http://dx.doi.org/10.1002/2013MS000276>
- 4 Westra, S., L.V. Alexander, and F.W. Zwiers, 2013: Global increasing trends in annual
5 maximum daily precipitation. *Journal of Climate*, **26**, 3904-3918.
6 <http://dx.doi.org/10.1175/JCLI-D-12-00502.1>
- 7 Wright, D.M., D.J. Posselt, and A.L. Steiner, 2013: Sensitivity of lake-effect snowfall to lake ice
8 cover and temperature in the Great Lakes region. *Monthly Weather Review*, **141**, 670-689.
9 <http://dx.doi.org/10.1175/mwr-d-12-00038.1>
- 10 Zhang, X., H. Wan, F.W. Zwiers, G.C. Hegerl, and S.-K. Min, 2013: Attributing intensification
11 of precipitation extremes to human influence. *Geophysical Research Letters*, **40**, 5252-5257.
12 <http://dx.doi.org/10.1002/grl.51010>

13