

### Pharmacological profiling of the hemodynamic effects of cannabinoid ligands: a combined in vitro and in vivo approach

Walsh, Sarah ; Hepburn, Claire; Keown, Oliver ; Astrand, Annika; Lindblom, Anna; Ryberg, Erik; Hjorth, Stephan; Leslie, Stephen; Greasley, Peter; Wainwright, Cherry

DOI:

[10.1002/prp2.143](https://doi.org/10.1002/prp2.143)

License:

Creative Commons: Attribution (CC BY)

*Document Version*

Publisher's PDF, also known as Version of record

*Citation for published version (Harvard):*

Walsh, S, Hepburn, C, Keown, O, Astrand, A, Lindblom, A, Ryberg, E, Hjorth, S, Leslie, S, Greasley, P & Wainwright, C 2015, 'Pharmacological profiling of the hemodynamic effects of cannabinoid ligands: a combined in vitro and in vivo approach', *Pharmacology Research and Perspectives*, vol. 3, no. 3, e00143.  
<https://doi.org/10.1002/prp2.143>

[Link to publication on Research at Birmingham portal](#)

**Publisher Rights Statement:**

doi: 10.1002/prp2.143.

**General rights**

Unless a licence is specified above, all rights (including copyright and moral rights) in this document are retained by the authors and/or the copyright holders. The express permission of the copyright holder must be obtained for any use of this material other than for purposes permitted by law.

- Users may freely distribute the URL that is used to identify this publication.
- Users may download and/or print one copy of the publication from the University of Birmingham research portal for the purpose of private study or non-commercial research.
- User may use extracts from the document in line with the concept of 'fair dealing' under the Copyright, Designs and Patents Act 1988 (?)
- Users may not further distribute the material nor use it for the purposes of commercial gain.

Where a licence is displayed above, please note the terms and conditions of the licence govern your use of this document.

When citing, please reference the published version.

**Take down policy**

While the University of Birmingham exercises care and attention in making items available there are rare occasions when an item has been uploaded in error or has been deemed to be commercially or otherwise sensitive.

If you believe that this is the case for this document, please contact [UBIRA@lists.bham.ac.uk](mailto:UBIRA@lists.bham.ac.uk) providing details and we will remove access to the work immediately and investigate.

## ORIGINAL ARTICLE

# Pharmacological profiling of the hemodynamic effects of cannabinoid ligands: a combined in vitro and in vivo approach

Sarah K. Walsh<sup>1</sup>, Claire Y. Hepburn<sup>1</sup>, Oliver Keown<sup>1,3</sup>, Annika Åstrand<sup>2</sup>, Anna Lindblom<sup>2</sup>, Erik Ryberg<sup>2</sup>, Stephan Hjorth<sup>2</sup>, Stephan J. Leslie<sup>3</sup>, Peter J. Greasley<sup>2</sup> & Cherry L. Wainwright<sup>1</sup>

<sup>1</sup>Institute for Health & Wellbeing Research, Robert Gordon University, Riverside East, Aberdeen AB10 7GJ, United Kingdom

<sup>2</sup>Cardiovascular & Metabolic Disease IMED, AstraZeneca R&D, Mölndal, Sweden

<sup>3</sup>Cardiac Unit, Raigmore Hospital, Old Perth Road, Inverness IV2 3UJ, United Kingdom

## Keywords

Cannabinoids, CB<sub>1</sub> receptor, G protein coupled receptor 55, hemodynamics

## Correspondence

Cherry L. Wainwright, Institute for Health & Wellbeing Research, The Robert Gordon University, Riverside East, Garthdee Road, Aberdeen AB10 7GJ, United Kingdom.  
Tel: +44 1224 262450  
E-mail: c.wainwright@rgu.ac.uk

## Funding Information

C. Y. Hepburn was supported by an Institute for Health & Wellbeing Research Studentship. S. K. Walsh received support from the Institute for Health & Wellbeing Research Strategic Funding Initiative.

Received: 2 February 2015;

Accepted: 14 March 2015

*Pharma Res Per*, 3(3), 2015, e00143, doi: 10.1002/prp2.143

doi: 10.1002/prp2.143

## Abstract

The receptors mediating the hemodynamic responses to cannabinoids are not clearly defined due to the multifarious pharmacology of many commonly used cannabinoid ligands. While both CB<sub>1</sub> and TRPV1 receptors are implicated, G protein-coupled receptor 55 (GPR55) may also mediate some of the hemodynamic effects of several atypical cannabinoid ligands. The present studies attempted to unravel the pharmacology underlying the in vivo hemodynamic responses to ACEA (CB<sub>1</sub> agonist), O-1602 (GPR55 agonist), AM251 (CB<sub>1</sub> antagonist), and cannabidiol (CBD; GPR55 antagonist). Agonist and antagonist profiles of each ligand were determined by ligand-induced GTP $\gamma$ S binding in membrane preparations expressing rat and mouse CB<sub>1</sub> and GPR55 receptors. Blood pressure responses to ACEA and O-1602 were recorded in anesthetized and conscious mice (wild type, CB<sub>1</sub><sup>-/-</sup> and GPR55<sup>-/-</sup>) and rats in the absence and presence of AM251 and CBD. ACEA demonstrated GTP $\gamma$ S activation at both receptors, while O-1602 only activated GPR55. AM251 exhibited antagonist activity at CB<sub>1</sub> and agonist activity at GPR55, while CBD demonstrated selective antagonist activity at GPR55. The depressor response to ACEA was blocked by AM251 and attenuated by CBD, while O-1602 did not induce a depressor response. AM251 caused a depressor response that was absent in GPR55<sup>-/-</sup> mice but enhanced by CBD, while CBD caused a small vasodepressor response that persisted in GPR55<sup>-/-</sup> mice. Our findings show that assessment of the pharmacological profile of receptor activation by cannabinoid ligands in in vitro studies alongside in vivo functional studies is essential to understand the role of cannabinoids in hemodynamic control.

## Abbreviations

abn-CBD, abnormal cannabidiol; ACEA, arachidonyl-2'-chloroethylamide; AEA, anandamide; AM251, 1-(2,4-dichlorophenyl)-5-(4-iodophenyl)-4-methyl-N-(piperidin-1-yl)-1H-pyrazole-3-carboxamide; AM281, 1-(2,4-dichlorophenyl)-5-(4-iodophenyl)-4-methyl-N-4-morpholinyl-1H-pyrazole-3-carboxamide; BSA, bovine serum albumin; CB<sub>1</sub>, cannabinoid receptor 1; CB<sub>2</sub>, cannabinoid receptor 2; CBD, cannabidiol; EDTA, ethylenediaminetetraacetic acid; GPR55, G protein coupled receptor 55; HEPES, 4-(2-hydroxyethyl)-1-piperazineethanesulfonic acid; LPI, lysophosphatidylinositol; TRPV1, transient receptor potential vanilloid 1 receptor.

## Introduction

The *in vivo* cardiovascular effects of cannabinoids, the most studied of which is the endocannabinoid anandamide (AEA), are complex and vary substantially depending upon the experimental design and whether or not the studies are performed in anesthetized or conscious animals (reviewed in Malinowska *et al.* 2012). Moreover, responses are mediated through a mixture of direct vasodilator effects on blood vessels, a reduced cardiac contractility, and modulation of autonomic control of both the heart and the vasculature. In anesthetized rats, intravenous (i.v.) administration of AEA elicits a three phase blood pressure (BP) response involving the transient receptor potential vanilloid-1 (TRPV1) receptors located on sensory vagal nerves in the heart (phase 1 transient depressor and phase 2 transient pressor responses) and CB<sub>1</sub> receptors present in the vasculature and myocardium (phase 3 prolonged fall in BP; Varga *et al.* 1996; Lake *et al.* 1997; Malinowska *et al.* 2001). In contrast, in conscious normotensive rats, AEA causes a pressor response (Gardiner *et al.* 2002), whilst in conscious spontaneously hypertensive rats (SHR) the initial two phases of the classical three phase response are followed by prolonged vasodilation (Ho and Gardiner 2009).

However, there are studies that suggest other receptors are involved in mediating these responses, and this also holds true for other cannabinoid ligands. For example, evidence exists for the presence of an endothelial SR141716-sensitive non-CB<sub>1</sub>, non-CB<sub>2</sub>, non-vanilloid receptor that is unresponsive to certain established CB<sub>1</sub>/CB<sub>2</sub> receptor agonists such as WIN-55,212-2, but can be activated by both AEA and its stable analog methanandamide, as well as lipid conjugates such as virodhamine and *N*-arachidonoylglycine (NAGly) (Ho and Hiley 2004; Parmar and Ho 2010). A further receptor that has been proposed to be activated by AEA is the G-protein-coupled receptor 55 (GPR55), which belongs to a group of rhodopsin-like seven transmembrane/G-protein-coupled receptors and was originally isolated in human caudate nucleus (Sawzdargo *et al.* 1999). Some of our group (Ryberg *et al.* 2007) were the first to describe the ligand pharmacology of this receptor and demonstrated that AEA, virodhamine, the abnormal cannabidiol (abn-CBD; a synthetic regioisomer of CBD), and its synthetic analog, O-1602 all bind to and activate the receptor *in vitro*, findings that have been corroborated by further studies (e.g., Waldeck-Weiermair *et al.* 2008), thus adding support to the proposal that GPR55 is a putative third cannabinoid receptor (Baker *et al.* 2006; Pertwee 2007).

While the receptors involved in mediating BP responses to endocannabinoids remain to be determined, the

picture is further complicated by the complex and multifarious pharmacology of the compounds used as experimental tools to address the question. For example, AM251 was originally described as a selective CB<sub>1</sub> antagonist (reviewed in Howlett *et al.* 2002), but it is now recognized that it also acts as a GPR55 agonist (Ryberg *et al.* 2007; Pertwee *et al.* 2010). In addition, the phytocannabinoid CBD has routinely been used as a GPR55 antagonist (Ryberg *et al.* 2007), yet it also demonstrates activity at various other receptors (Pertwee 2008; Pertwee *et al.* 2010). Similarly O-1602, which was initially regarded and utilized as a GPR55 agonist since its actions can be blocked by CBD (Jarai *et al.* 1999) is now thought to exert equipotent action at another orphan cannabinoid candidate receptor (GPR18; McHugh *et al.* 2010).

Most previous studies have focused on either the *in vitro* assessment of the ability of ligands to bind to CB<sub>1</sub> or GPR55 receptors and activate downstream signaling processes (e.g., Ryberg *et al.* 2007; Pertwee *et al.* 2010; Henstridge *et al.* 2011) or on their vascular functional responses (e.g., Wagner *et al.* 1999; Ho and Hiley 2003, 2004), but rarely both. Therefore, this study was performed to first determine the receptor profiles of CBD, AM251, O-1602, and the CB<sub>1</sub> agonist arachidonyl-2'-chloroethylamide (ACEA) using a GTP $\gamma$ S-binding assay in membrane preparations exclusively expressing recombinant CB<sub>1</sub> or GPR55 receptors. Once receptor profiles were identified, we then studied the hemodynamic responses to each of these compounds in both anesthetized and conscious rats and mice, using wild type, CB<sub>1</sub>, and GPR55 knockout mice, to determine whether the *in vivo* hemodynamic profiles correlated with the activation profiles determined *in vitro*.

## Materials and Methods

### Assessment of ligand-induced GTP $\gamma$ S binding in membrane preparations expressing rat and mouse CB<sub>1</sub> and GPR55 receptors

HEK293s cells were transiently transfected with cDNA encoding rat or mouse CB<sub>1</sub> or GPR55 and membranes were prepared as previously described (Ryberg *et al.* 2007). In short, agonist activities in [<sup>35</sup>S]-GTP $\gamma$ S binding assays were determined by the addition of ligand at 30°C for 45 min in membrane buffer [50 mmol/L NaCl, 5 mmol/L MgCl<sub>2</sub>, 0.5 mmol/L EDTA, 25 mmol/L HEPES (all Sigma, Gillingham, Dorset, UK); pH 7.4] containing 0.05  $\mu$ g  $\mu$ L<sup>-1</sup> of membrane protein with 0.01% BSA, 25  $\mu$ mol/L guanosine 5'-diphosphate (GDP), 100  $\mu$ mol/L dithiothreitol (DTT), and 0.53 nmol/L [<sup>35</sup>S]GTP $\gamma$ S (PerkinElmer) in a final volume of 200  $\mu$ L. Antagonist assays were performed similarly,

with the addition of an EC<sub>80</sub> concentration of CP55940 as a nonselective CB<sub>1</sub>/CB<sub>2</sub> agonist in conjunction with the ligand to be tested. Nonspecific binding was determined in the presence of 20 μmol/L unlabeled GTPγS. The reaction was terminated by addition of ice-cold wash buffer (50 mmol/L Tris-HCl, 5 mmol/L MgCl<sub>2</sub>, 50 mmol/L NaCl; pH 7.4) followed by rapid filtration under vacuum through 96-well B-glass fiber filter plates (PerkinElmer, Waltham, Massachusetts, USA) using a Biomek FX (Beckman Coulter, Bromma, Sweden). The filter plates were dried (30 min at 50°C) before scintillation liquid (PerkinElmer) was added onto the filters and the bound radioactivity was determined using a scintillation counter (Wallac). Data were fitted with a four-parameter logistic fit using the equation  $y = A + (B - A) / (1 + ((C/x)^D))$ , where *A* is no activation, *B* is full activation, *C* is the EC<sub>50</sub>, and *D* is the Hill slope. All data were based on at least three independent experiments.

## In vivo studies

### Animals

All procedures were performed under either a Project Licence issued under the UK Animals (Scientific Procedures) Act 1986 (procedures under terminal anesthesia) or under the approval of the local Ethical committee in Gothenburg (conscious studies). The studies were designed to comply with the ARRIVE Guidelines for reporting in vivo studies (Kilkenny *et al.* 2010). Normotensive Sprague–Dawley (SD) rats and SHR were purchased from Charles River (Tranent, Scotland, UK). CB<sub>1</sub> knockout (CB<sub>1</sub><sup>-/-</sup>) mice and their corresponding wild-type (WT; C57Bl/6J) control were bred at AstraZeneca (AZ) from founder pairs obtained from Dr. Andreas Zimmer, Germany (Zimmer *et al.* 1999). GPR55 knockout (GPR55<sup>-/-</sup>) mice were bred at both AZ and the University of Aberdeen from heterozygous GPR55 knockout mice, which were intermated to generate F1 mice homozygous for the GPR55 mutation (GPR55<sup>-/-</sup>) and WT (C57Bl/6J) littermate controls. Both males and females were used and genotyped as previously described (Whyte *et al.*, 2009). Neither genetically modified strain demonstrated any obvious phenotypic difference from WT animals. All animals were group housed in cages at a temperature of 21 ± 2°C and 55 ± 10% humidity with a 12 h light/dark cycle and allowed free access to food and tap water.

### Hemodynamic studies in anesthetized rats and mice

All experiments performed under terminal anesthesia were carried out following approval by Robert Gordon

University Animal Ethics Panel. Anesthesia was induced in male SD rats (200–300 g) by sodium pentobarbital [60 mg kg<sup>-1</sup> intraperitoneal (i.p.) injection]. Male/female WT and GPR55<sup>-/-</sup> mice (25–35 g) were anesthetized with a mixture of ketamine (120 mg kg<sup>-1</sup>) and xylazine (16 mg kg<sup>-1</sup>) via i.p. injection. For both species the trachea was cannulated to allow artificial respiration with room air when required (54 strokes min<sup>-1</sup> and tidal volume 1.5 mL 100 g<sup>-1</sup> for rats; 120 strokes min<sup>-1</sup> and tidal volume 100 μL 10 g<sup>-1</sup> for mice) and the left carotid artery and right jugular vein were cannulated for the measurement of arterial BP (MLT844 Physiological Pressure Transducer; AD Instruments, Oxford, UK) and drug administration, respectively. Core temperature was monitored continuously and maintained at 37–38°C with the aid of a Vetcare heated pad (Harvard Apparatus Ltd., Boston, Massachusetts, USA). Anesthesia was monitored by foot pinch reflex and maintained throughout by administration of additional doses of anesthetic (rats: 3–4 mg kg<sup>-1</sup> of sodium pentobarbital salt i.v.; mice: 50 μL 25 g<sup>-1</sup> of ketamine/xylazine i.p.) every 40 min, or as required. Both mean arterial blood pressure (MABP) and a standard limb lead I electrocardiogram (ECG) were monitored continuously throughout the experimental period using a Power Lab data acquisition system via a Bridge Amplifier and Animal Bio Amplifier, respectively, and data subsequently analyzed using Chart Software (all AD Instruments). Heart rate (HR) was calculated from the ECG and recorded throughout the entire experimental period. After a stabilization period of approximately 15 min dose–response experiments were carried out as described below.

### Blood pressure measurements in conscious rats and mice

All studies in conscious animals were performed in SHR. Following anesthesia with isoflurane (4% in air followed by 2% during surgery) with supplemental Romefen<sup>®</sup> (10 mg kg<sup>-1</sup> s.c.; Merial SAS, Lyon, France) for analgesia, a polyethylene catheter (PE10) was inserted into the abdominal aorta, proximal to the kidneys, for BP recording, and a silicon catheter (SEDAT, Irigny, France) was inserted into the jugular vein for drug administration. Both catheters were tunneled subcutaneously to the neck region and anchored to an inert button. Immediately after completion of surgery the rats were connected to a tethered swivel system with a continuous intra-arterial infusion (700 μL h<sup>-1</sup>) of 0.9% NaCl containing melagatran (10 mg L<sup>-1</sup>) in order to keep the arterial line open. The anesthetic and surgical procedures for the CB<sub>1</sub><sup>-/-</sup>, GPR55<sup>-/-</sup>, and WT mice used for the studies in conscious animals were identical to those in the rat, with the

exception that the arterial catheter was placed in the descending aorta via the carotid artery. Following the completion of surgery, the animals were allowed to recover for 24 h with free access to food and water. During the experiments, both BP and HR were recorded continuously in conscious animals and data fed into in-house software (v.4.0; PharmLab), reporting average values of MABP, systolic, diastolic, and pulse pressures, HR and body temperature every 15 sec.

## Experimental protocols

### Assessment of the hemodynamic responses to ACEA in the absence and presence of AM251 and CBD

As a preliminary assessment of the effects of ACEA on arterial BP, a single bolus intravenous dose ( $3 \text{ mg kg}^{-1}$ ; selected from the literature as a dose known to produce a depressor response) was given to anesthetized rats. This was then repeated in the presence of AM251 (1 and  $3 \text{ mg kg}^{-1}$ ), CBD ( $50 \mu\text{g kg}^{-1}$ ) or a combination of the two to establish their ability to influence the response to ACEA (See Fig. 1 for the Experimental Protocol). Since the data from the GTP $\gamma$ S-binding assay (Table 1) demonstrated ACEA to exhibit activity at GPR55 within the nanomolar range (and only one order of magnitude higher than at CB<sub>1</sub> receptors) we also explored the role of GPR55 in the depressor response to ACEA in anesthetized WT and GPR55<sup>-/-</sup> mice using the same experimental protocol as that described for the anesthetized rats (Fig. 1). To account for any vehicle effects, all responses to ACEA were assessed either in the presence of these antagonists or their vehicles (CBD dissolved in ethanol; AM251 dissolved in a mixture of DMSO and Tween 80; both were diluted with saline prior to drug administration; Fig. 1). The time interval between drug administrations was 10–15 min to allow BP values to return to predrug values.

### Assessment of the hemodynamic responses to O-1602

Using an identical protocol to that used for ACEA, the effect of O-1602 ( $5\text{--}100 \text{ ng kg}^{-1}$  administered as incremental i.v. doses) was determined on HR and BP in anesthetized rats (in the absence and presence of AM251 and/or CBD) and in anesthetized WT and GPR55<sup>-/-</sup> mice. Since we were unable to observe any hemodynamic

responses to O-1602 compared to vehicle (methyl acetate) in anesthetized animals, these experiments were repeated in conscious mice to abrogate any effects of anesthesia on the hemodynamic responses, using a higher dose range of O-1602 ( $5, 10$  and  $15 \text{ mg kg}^{-1}$  i.v.). To determine any role for CB<sub>1</sub> and GPR55, these experiments were performed in WT, GPR55<sup>-/-</sup> and CB<sub>1</sub><sup>-/-</sup> mice; for the studies in WT and CB<sub>1</sub><sup>-/-</sup> mice, responses to O-1602 were determined in the absence (vehicle) and presence of CBD ( $5 \text{ mg kg}^{-1}$ ), whereas in the GPR55<sup>-/-</sup> mice responses were determined in the absence (vehicle) and presence of the CB<sub>1</sub> antagonist AM281 ( $10 \text{ mg kg}^{-1}$ ). Finally, since the cardiovascular effects of cannabinoids can be exaggerated in hypertension (Ho and Gardiner 2009), we investigated whether a depressor response to O-1602 could be unmasked in the setting of elevated MABP and intact autonomic vascular control by using SHR's pretreated with metoprolol ( $10 \text{ mg kg}^{-1}$  i.v.), to prevent baroreceptor reflex correction of changes in BP.

### Assessment of the hemodynamic responses to AM251 and CBD

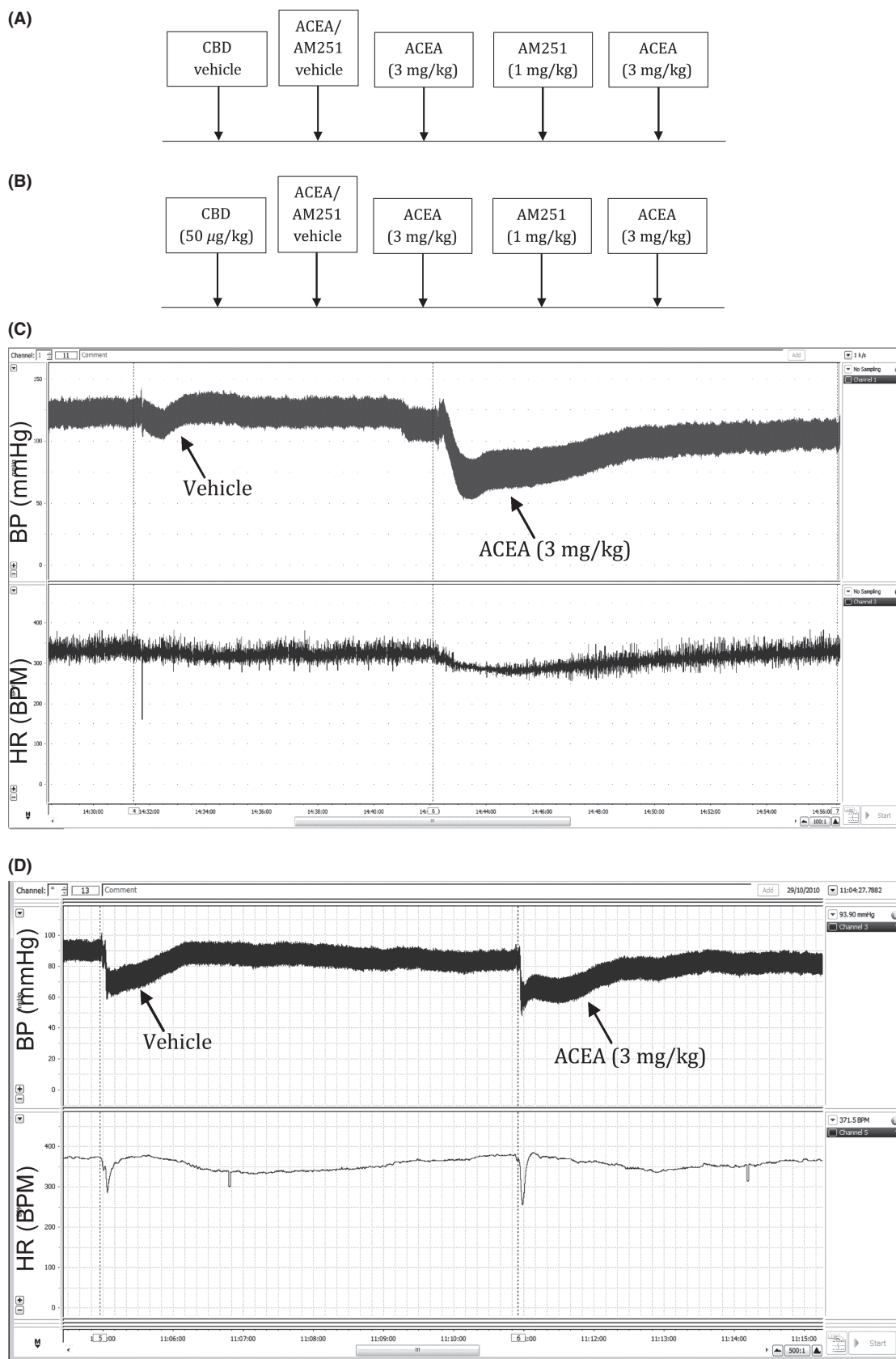
Although the study was originally designed to determine the ability of CBD and AM251 to block the depressor responses to ACEA and O-1602, both CBD and AM251 were found to produce depressor responses themselves which were worthy of study, particularly since AM251 has been reported to possess pharmacological actions at both CB<sub>1</sub> (as an antagonist) and GPR55 (as an agonist) receptors (Ryberg et al. 2007; reviewed in Stanley et al. 2012). For CBD, anesthetized rats and mice (both WT and GPR55<sup>-/-</sup>) were administered a single bolus dose of CBD ( $50 \mu\text{g kg}^{-1}$ ). For AM251 similar experiments were performed, but in the absence and presence of CBD to determine whether CBD mimicked the effects of GPR55 deletion.

### Measurement of hemodynamic responses and statistical analyses

In order to take account of any vehicle responses and variations in the time course of the responses to the various cannabinoid ligands, a standard approach was adopted to measuring the BP responses in all experimental models. MABP measurements were taken every 15 sec from 1 min prior to drug/vehicle until 10 min postdrug administration. Changes in MABP at each sampling point

**Figure 1.** Experimental protocol for the assessment of the effects of AM251 on the depressor responses to ACEA in anesthetized rats and mice. Experiments were performed in the absence (A) or presence (B) of CBD ( $50 \mu\text{g kg}^{-1}$ ) in separate groups of animals. Examples of original traces showing the blood pressure (top trace) and heart rate (bottom trace) responses to ACEA and its vehicle in rats (C) and mice (D).





were calculated as a % change in MABP and time plots used to calculate area above the curve (AAC) for depressor responses or area under the curve (AUC) for pressor responses. Data were expressed as mean  $\pm$  SEM, and MABP responses compared directly by either a paired *t*-test (responses within animals) or by two-way analysis of variance (ANOVA) followed by Bonferroni post hoc test (for comparing multiple drug interventions across several groups). All drug responses were compared directly with the vehicle responses to determine the exact magnitude of the response to the ligand.

## Results

### [<sup>35</sup>S]-GTP $\gamma$ S binding assays

The EC<sub>50</sub> data for all of the ligands used in the [<sup>35</sup>S]-GTP $\gamma$ S binding assays are shown in Table 1. ACEA demonstrated GTP $\gamma$ S binding at both receptors, with an approximately 10-fold higher affinity for CB<sub>1</sub> in both mouse and rat tissue as compared to GPR55. O-1602-activated GPR55 with a potency approximately 5 times that of ACEA. AM251 exhibited significant activity at both CB<sub>1</sub> (as an antagonist) and GPR55 (as an agonist), with only a three to five-fold higher potency for CB<sub>1</sub>. In contrast, AM281 demonstrated antagonist activity selectively for CB<sub>1</sub> and CBD demonstrated selective antagonism at GPR55. For comparison, AEA was also included in the binding assay and exhibited similar activity at both CB<sub>1</sub> and GPR55 in the low nanomolar range consistent with previous findings for the human receptor (Ryberg et al. 2007). In conclusion, there were no significant species differences in EC<sub>50</sub> values for either receptor for any of the ligands tested.

### Hemodynamic responses to ACEA in normotensive anesthetized rats and mice

A single bolus dose of ACEA (3 mg kg<sup>-1</sup>) produced a reproducible and pronounced depressor response in anesthetized rats (*P* < 0.001; Figs. 2A and E), but had no effect

on HR (Fig. 2C). The magnitude and duration of the response to ACEA was attenuated by AM251 (1 and 3 mg kg<sup>-1</sup>) in a dose-dependent manner (*P* < 0.01; Figs. 2A and E). In the presence of CBD alone (50  $\mu$ g kg<sup>-1</sup>) the duration of the response to ACEA was blunted and consequently the AAC value was reduced by approximately 50% (*P* < 0.05; Figs. 2B and E). Combined administration of CBD followed by AM251 5 min later, did not produce an additive blockade of the ACEA response; indeed the blockade seen with the higher dose of AM251 was no longer evident (Fig. 2E). In contrast, ACEA did not produce a depressor response in anesthetized mice that could be distinguished from the response to the vehicle in either WT (Fig. 3A) or GPR55<sup>-/-</sup> (Fig. 3B) mice, nor was there any measurable effect on HR (Figs. 3C and D).

### Hemodynamic responses to O-1602

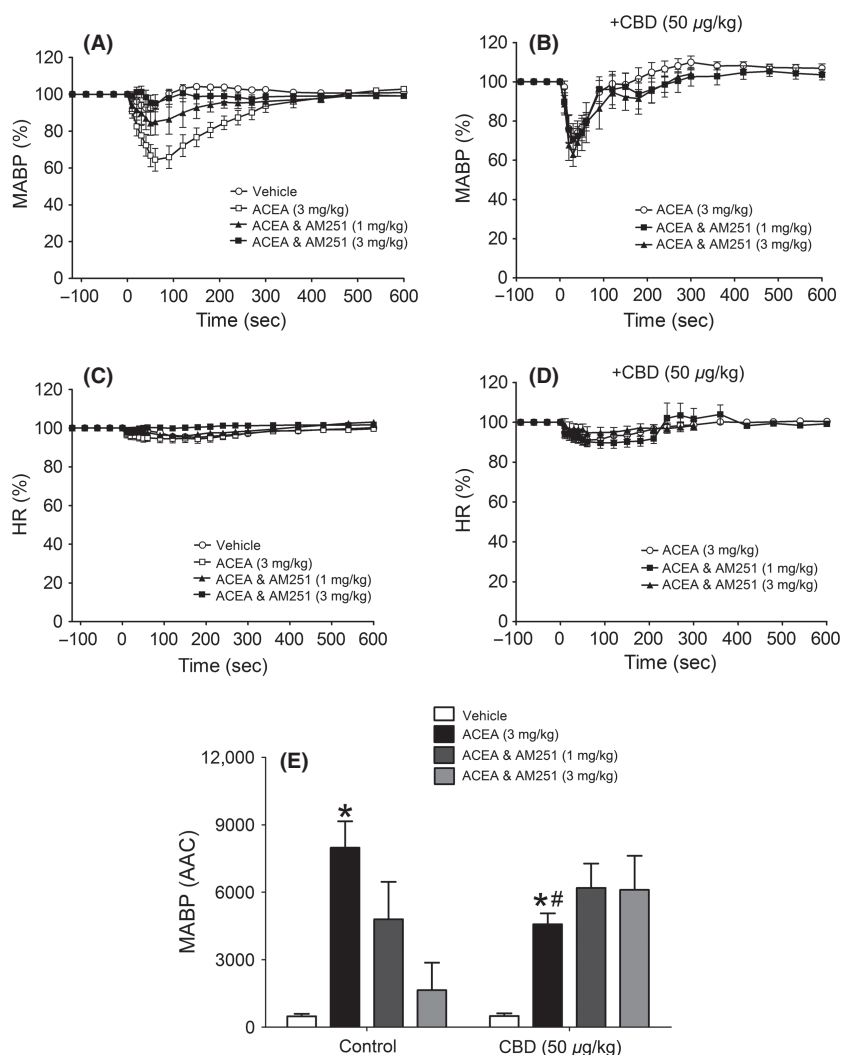
O-1602 (5–100 ng kg<sup>-1</sup>) did not produce any changes in MABP or HR in anesthetized rats (Figs. 4A, C, and E) or WT mice (Figs. 4B, D, and F) over and above those seen with the vehicle. In conscious hypertensive rats, O-1602 administered in three ascending doses (5, 10, and 20 mg kg<sup>-1</sup>) spaced 20 min apart did not induce any changes in MABP (Fig. 5A) or HR (Table 2), even though O-1602 was given at much higher doses than those given to anesthetized rats. However, CBD pretreatment revealed a vasodepressor response to the lowest dose of O-1602 (Fig. 5B, Table 2) while co-administration of 10 mg kg<sup>-1</sup> AM281 (a more selective CB<sub>1</sub> antagonist; Ryberg et al. 2007) revealed a marked vasodepressor response, which was present for all doses and was sustained in the presence of 5 mg kg<sup>-1</sup> CBD (Figs. 5C and D). None of the interventions induced any changes in HR (Table 2).

In conscious WT mice, O-1602 had no effect on MABP (Fig. 5A), but did induce a transient bradycardia at the highest dose tested (Fig. 5B; Table 3). However, in CB<sub>1</sub><sup>-/-</sup> mice a dose-dependent depressor response was observed and the HR responses to O-1602 were markedly enhanced (Figs. 6C and D; Table 3). Pretreatment with CBD also

**Table 1.** Ligand-dependent [<sup>35</sup>S]-GTP $\gamma$ S binding assays performed in membranes prepared from HEK293s cell transiently transfected with either rat or mouse CB<sub>1</sub> or GPR55 cDNA.

Compound	CB <sub>1</sub> EC <sub>50</sub> (nmol/L)		GPR55 EC <sub>50</sub> (nmol/L)	
	Rat	Mouse	Rat	Mouse
ACEA	7 $\pm$ 1	3 $\pm$ 0.5	78 $\pm$ 4	62 $\pm$ 3
O-1602	>30,000	>30,000	20 $\pm$ 3	12 $\pm$ 4
CBD	>30,000	>30,000	624 $\pm$ 13*	780 $\pm$ 8*
AM251	26 $\pm$ 8*	13 $\pm$ 2*	74 $\pm$ 3	68 $\pm$ 3
AM281	13 $\pm$ 4*	8 $\pm$ 1*	>30,000	>30,000
AEA	34 $\pm$ 2	25 $\pm$ 8	24 $\pm$ 3	38 $\pm$ 3

EC<sub>50</sub> values are expressed as mean  $\pm$  SEM of at least three independent experiments. “\*” indicates that the ligand behaved as an antagonist.



**Figure 2.** Hemodynamic responses to ACEA and its vehicle in normotensive anesthetized rats, showing the time course of the depressor responses (expressed as a percentage fall in mean arterial blood pressure from baseline) in the absence (A) and presence (B) of CBD ( $50 \mu\text{g kg}^{-1}$ ) and percent changes in heart rate (C and D). Baseline MABP's and HR's for each group were control ( $129 \pm 4$  mmHg and  $379 \pm 8$  bpm;  $n = 8$ ) and CBD ( $135 \pm 4$  mmHg and  $390 \pm 4$  bpm;  $n = 8$ ), respectively. Panel (E) summarizes the mean areas above the curve for the blood pressure response (AAC in arbitrary units). All values shown are mean  $\pm$  SEM; \* $P < 0.01$  versus vehicle (within group); # $P < 0.05$  versus ACEA (control group).

unmasked a dose-dependent depressor response to O-1602 in WT mice (Fig. 6E; Table 3) and exacerbated the drug-induced bradycardia (Fig. 6F; Table 3), but did not further enhance the responses to O-1602 in  $\text{CB}_1^{-/-}$  mice (Figs. 7G and H; Table 2). Finally, administration of O-1602 in the presence of AM281 in  $\text{GPR55}^{-/-}$  mice did not elicit a depressor response (Table S1).

### Hemodynamic responses to CBD

CBD alone induced a small but measurable and statistically significant depressor response in anesthetized normotensive rats ( $P < 0.05$ ; Figs. 7A and B) and induced depressor responses of a similar magnitude in WT and

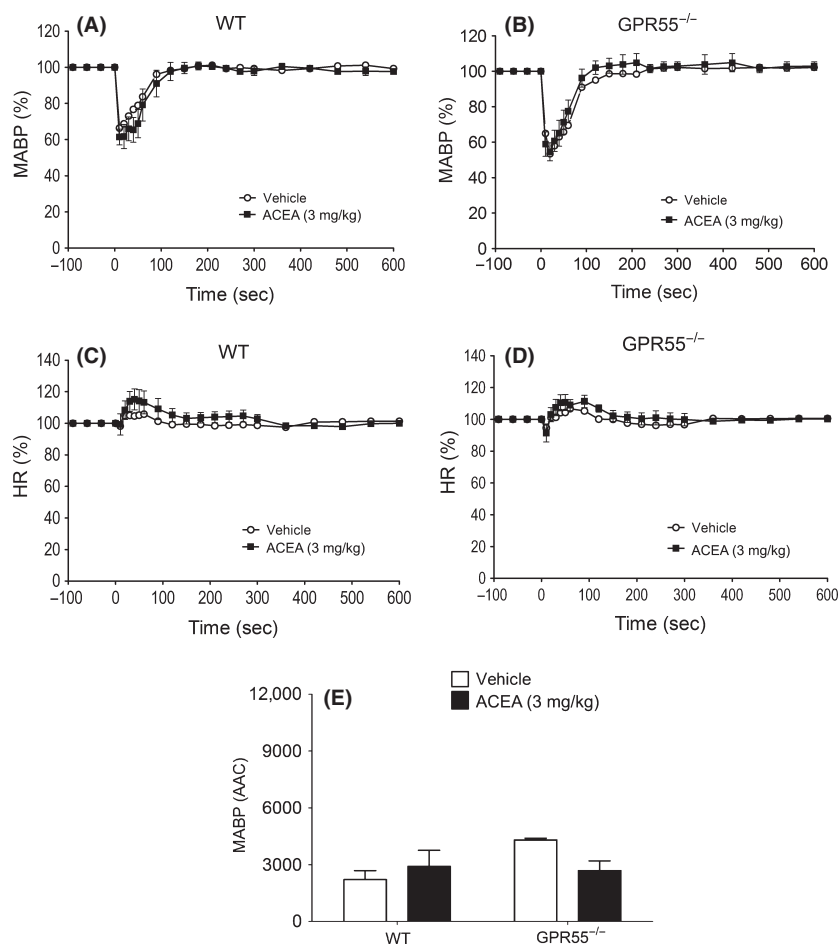
$\text{GPR55}^{-/-}$  mice (Figs. 7C–E); HR was unaffected in any experiments (data not shown). AM251 on its own had no effect in anesthetized rats, however, when given in the presence of CBD it induced a depressor response (Fig. 8). In contrast, AM251 alone induced a depressor response in WT, but not  $\text{GPR55}^{-/-}$ , mice that was similarly augmented in the presence of CBD (Figs. 8C–E).

### Discussion

#### GTP $\gamma$ S-binding profiles

The GTP $\gamma$ S-binding assay is a relatively simple and straightforward assay that measures a functional conse-



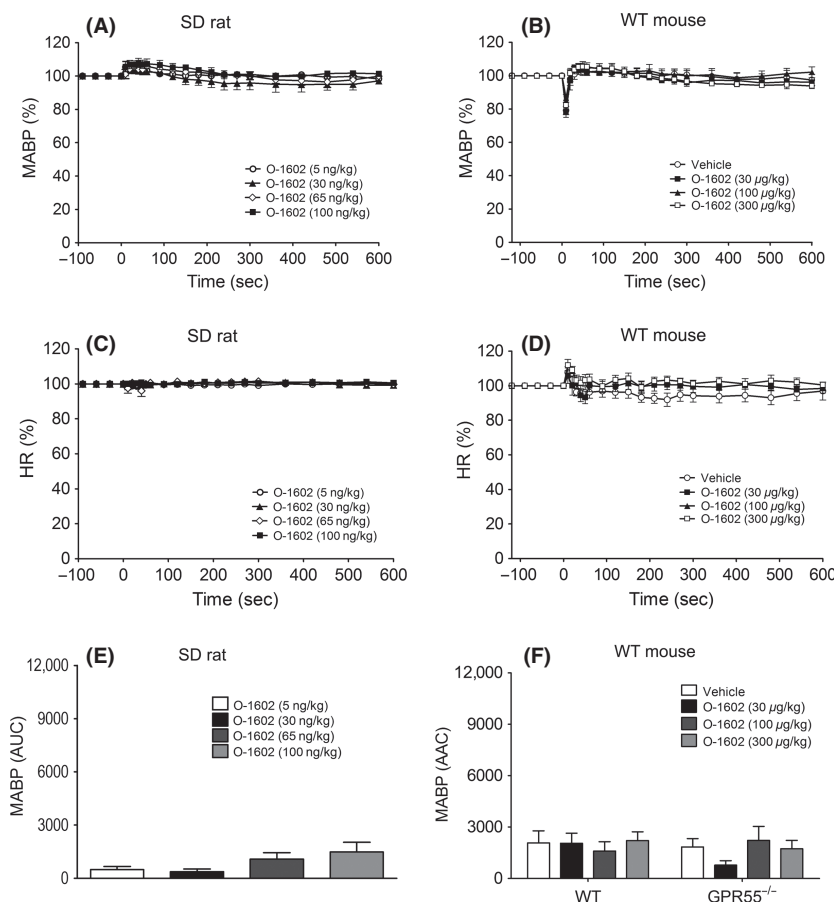


**Figure 3.** The time course of the depressor responses (expressed as a percentage fall in mean arterial blood pressure from baseline) to ACEA and its vehicle in WT (A) and GPR55<sup>-/-</sup> (B) mice and percent changes in heart rate (C and D). Baseline MABP's and HR's for each group were WT ( $89 \pm 3$  mmHg and  $329 \pm 6$  bpm;  $n = 8$ ) and GPR55<sup>-/-</sup> ( $89 \pm 2$  mmHg and  $339 \pm 5$  bpm;  $n = 8$ ), respectively. Panel (E) summarizes the mean areas above the curve for the blood pressure response (AAC in arbitrary units). All values shown are mean  $\pm$  SEM.

quence of receptor activation at one of the earliest receptor-mediated events and is used routinely to study receptors coupled to G(i/o) proteins, but can also be used with GPCRs that couple to the G(s) and G(q) families of G proteins (Harrison and Traynor 2003). Since previous studies from our group have shown that activity of ligands at GPR55 and CB<sub>1</sub> receptors can be measured using this assay (Ryberg et al. 2007), it was an appropriate choice to explore the effects of the ligands under study in CB<sub>1</sub> and GPR55-transfected cells from both animal species used for the in vivo studies (rat and mouse). Consistent with reports of its action as a selective CB<sub>1</sub> agonist (Hillard et al. 1999), ACEA demonstrated activity at the CB<sub>1</sub> receptor in the low nanomolar range. However, ACEA also exhibited agonist activity at GPR55 in the nanomolar range, which to our knowledge is the first demonstration that this ligand also activates GPR55. O-1602 was also found to exert agonist

activity at GPR55 in the nanomolar range, with no activity at CB<sub>1</sub>. However, in light of the building evidence to support the notion that O-1602 also activates GPR18 it would have been of interest to also determine the activation profile of O-1602 in cells expressing this receptor.

In terms of the antagonist drugs, CBD showed activity as an antagonist at GPR55, which is consistent with our previous findings (Ryberg et al. 2007), albeit in the high nanomolar range, and did not demonstrate any activity as an agonist at CB<sub>1</sub> receptors. Finally, as well as exhibiting antagonist activity at CB<sub>1</sub> receptors in the nanomolar range, AM251 shows clear agonist activity at GPR55 in a similar concentration range, which is consistent with the literature (Pertwee et al. 2010). In contrast, the similar molecule AM281 demonstrated antagonism of CB<sub>1</sub> at nanomolar concentrations whilst it had no activity as either an agonist or antagonist at GPR55.



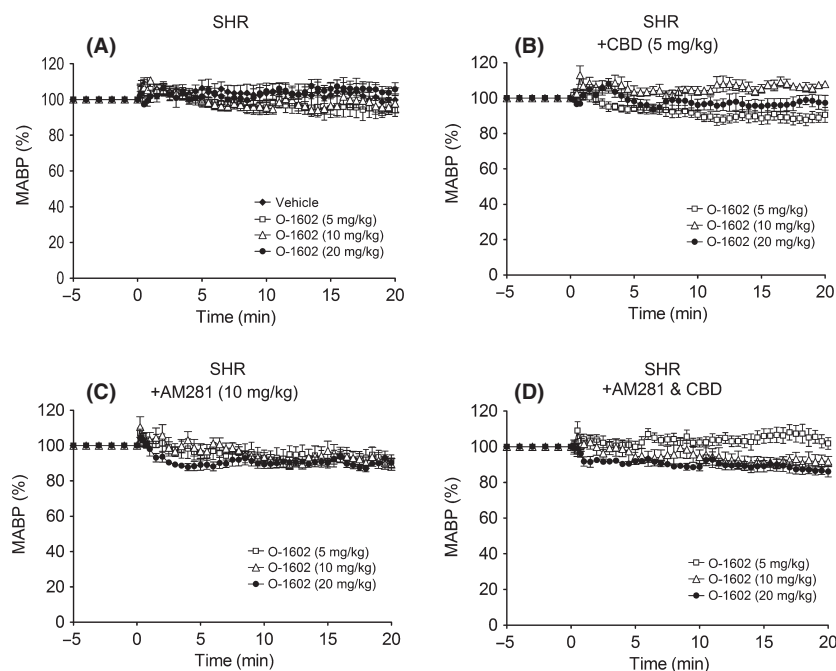
**Figure 4.** Blood pressure and heart rate responses to O-1602 (5–100 ng kg<sup>-1</sup>) in normotensive anesthetized rats (A and C) and WT mice (B and D). Baseline MABP's and HR's for each group were SD rats (133 ± 2 mmHg and 433 ± 9 bpm; *n* = 8) and WT mice (90 ± 3 mmHg and 334 ± 6 bpm; *n* = 8), respectively. Panels (E and F) show the area above the curve (arbitrary units) for the blood pressure response in rats and mice respectively. Values shown are mean ± SEM.

### Hemodynamic responses to ACEA

The finding that ACEA caused a marked fall in arterial BP in anesthetized rats, which was blocked by AM251, suggests a straightforward agonist/antagonist relationship and is consistent with the GTP $\gamma$ S-binding data. Most previous studies showing CB<sub>1</sub>-mediated vasodilatation have been undertaken in isolated blood vessel preparations and have used the endocannabinoid, AEA, rather than ACEA, as an agonist. However, ACEA has been shown to decrease coronary perfusion pressure and increase coronary flow (Ford et al. 2002) in isolated perfused hearts, although confirmation of an action at CB<sub>1</sub> receptors using an appropriate antagonist was not reported. This is therefore the first study to demonstrate a CB<sub>1</sub>-mediated vasodepressor response with ACEA *in vivo* and that it can be blocked by AM251.

However, while our data support the notion of CB<sub>1</sub> receptors mediating a vasodepressor effect, it was interesting to note that in anesthetized rats pretreated with CBD,

the response to ACEA was also attenuated. If it is assumed that ACEA is a selective CB<sub>1</sub> agonist, then the most likely explanation for this would be a CB<sub>1</sub> antagonism by CBD as has been reported in some studies (Per-twee 2008). Furthermore, the inability of AM251 to further prevent ACEA-induced depressor response in the presence of CBD could be through competition with AM251 for the CB<sub>1</sub> receptor site, since AM251 has a similar binding affinity at CB<sub>1</sub> (*K*<sub>i</sub> 7.5 nmol/L; Lan et al. 1999) to that reported for CBD. However, an alternative explanation could be that, since ACEA exerts agonist activity at GPR55 in the nanomolar range, and CBD is an antagonist at this receptor, the effects of ACEA may in fact be mediated by both receptors rather than through CB<sub>1</sub> alone. In support of this, assuming a total blood volume of ~20 mL in a 300 g rat, the dose of ACEA administered (3 mg kg<sup>-1</sup>; MW 365.98 g) would be expected to achieve a total (although not necessarily free) blood concentration in the region of 100–120 nmol/L, which is close to the EC<sub>50</sub> (78 nmol/L) for ACEA activity at



**Figure 5.** Blood pressure and heart rate responses to O-1602 (5–20 mg kg<sup>-1</sup>) in hypertensive SHR rats in the presence of vehicle (A); CBD (5 mg kg<sup>-1</sup>; B); AM281 (10 mg kg<sup>-1</sup>; C); or a combination of CBD and AM281 (D). Baseline MABP's and HR's for each group were SHR (146 ± 5 mmHg and 305 ± 10 bpm; *n* = 6); SHR & CBD (141 ± 5 mmHg and 296 ± 8 bpm; *n* = 6); SHR & AM281 (153 ± 6 mmHg and 296 ± 9 bpm; *n* = 7); and SHR & CBD & AM281 (151 ± 5 mmHg and 297 ± 12 bpm; *n* = 7), respectively. Values shown are mean ± SEM.

**Table 2.** Hemodynamic responses to O-1602 in conscious hypertensive rats, pretreated with metoprolol (10 mg kg<sup>-1</sup> i.v.) to prevent baroreceptor reflex correction of blood pressure, in the absence or presence of AM281 (10 mg kg<sup>-1</sup>), CBD (5 mg kg<sup>-1</sup>) or a combination of the two.

MABP [depressor response - area above the curve (arbitrary units)]	Control	+CBD	+AM281	+CBD and AM281
Vehicle	22 ± 19	–	–	–
O-1602 (5 mg kg <sup>-1</sup> )	59 ± 21	189 ± 32*	196 ± 44*	41 ± 17
O-1602 (10 mg kg <sup>-1</sup> )	56 ± 22	23 ± 17	160 ± 31*	180 ± 29*
O-1602 (20 mg kg <sup>-1</sup> )	26 ± 16	73 ± 38	191 ± 30*	199 ± 29*
HR [tachycardic response – area under the curve (arbitrary units)]	Control	+CBD	+AM281	+CBD and AM281
Vehicle	96 ± 36	–	–	–
O-1602 (5 mg kg <sup>-1</sup> )	61 ± 24	68 ± 11	39 ± 11	53 ± 22
O-1602 (10 mg kg <sup>-1</sup> )	18 ± 8	79 ± 29	40 ± 12	37 ± 32
O-1602 (20 mg kg <sup>-1</sup> )	72 ± 13	98 ± 32	56 ± 26	38 ± 16

Baseline MABP's and HR's for each group were control (146 ± 5 mmHg and 305 ± 10 bpm; *n* = 6); CBD (141 ± 5 mmHg, 296 ± 8 bpm; *n* = 6); AM281 (153 ± 6 mmHg and 296 ± 9 bpm; *n* = 7); and CBD and AM281 (151 ± 5 mmHg and 297 ± 12 bpm; *n* = 7). Values shown are mean ± SEM of the area above/below the curve. \**P* < 0.05 compared to the same dose in controls. \**P* < 0.05 versus equivalent O-1602 dose in control group.

GPR55 measured in the GTP $\gamma$ S-binding assay. Therefore, in an attempt to determine whether GPR55 plays a role in the depressor response to ACEA we studied the hemodynamic responses in anesthetized WT and GPR55<sup>-/-</sup> mice.

In contrast to our findings in rats we were not able to demonstrate a depressor response to ACEA in anesthetized WT mice, the most likely explanation being the

significant contribution of the drug vehicle to the response, which was much more marked in mice despite taking significant measures to limit injection artefacts following bolus administration. An alternative explanation is a lack of either vascular CB<sub>1</sub> or GPR55 receptors in mouse resistance vessels, although CB<sub>1</sub> expression has recently been shown in murine skeletal muscle arterioles (Szekeres *et al.* 2012) and GPR55 has been shown to be expressed

**Table 3.** Depressor responses to O-1602 in conscious WT and CB<sub>1</sub><sup>-/-</sup> mice pretreated with metoprolol to remove baroreceptor reflex correction of blood pressure.

MABP [depressor response - area above the curve (arbitrary units)]	Control	+CBD	+AM281	+CBD and AM281
Vehicle	99.5 ± 17.8	–	69.5 ± 5.7	–
O-1602 (5 mg kg <sup>-1</sup> )	91.9 ± 38.2	99.6 ± 25.8	64.6 ± 17.5	73.3 ± 24.5
O-1602 (10 mg kg <sup>-1</sup> )	44.1 ± 9.6	73.5 ± 17.8	95.2 ± 6.5	114.6 ± 17.6
O-1602 (15 mg kg <sup>-1</sup> )	61.3 ± 10.9	148.9 ± 17.1 <sup>†</sup>	101.5 ± 4.1*	119.7 ± 18.1
HR [bradycardic response - area above the curve (arbitrary units)]	Control	+CBD	+AM281	+CBD & AM281
Vehicle	44.4 ± 12.2	–	67.7 ± 4.9	–
O-1602 (5 mg kg <sup>-1</sup> )	41.1 ± 20.8	17.4 ± 11.7	55.3 ± 20.9	154.8 ± 61.7
O-1602 (10 mg kg <sup>-1</sup> )	48.7 ± 25.4	186.8 ± 42.1 <sup>†</sup>	130.5 ± 20.5*	298.2 ± 111.7
O-1602 (15 mg kg <sup>-1</sup> )	95.3 ± 6.5*	197.1 ± 17.1 <sup>†</sup>	183.1 ± 50.9*	286.6 ± 105.4

Responses were determined in the absence and presence of CBD (5 mg kg<sup>-1</sup>). Baseline MABP's and HR's for each group were: WT (128 ± 4 mmHg and 485 ± 9 bpm; *n* = 5); CB<sub>1</sub><sup>-/-</sup> (134 ± 2 mmHg and 438 ± 5 bpm; *n* = 5); WT and CBD (122 ± 3 mmHg and 384 ± 6 bpm; *n* = 6); and CB<sub>1</sub><sup>-/-</sup> and CBD (135 ± 3 mmHg and 477 ± 5 bpm; *n* = 6). Values are mean ± SEM.

\**P* < 0.01 versus vehicle control (within group); <sup>†</sup>*P* < 0.01 versus equivalent dose in WT mice.

in mouse arteries (Daly et al. 2010). Therefore, whether or not ACEA induces a vasodepressor response, at least in part, through GPR55 remains to be confirmed.

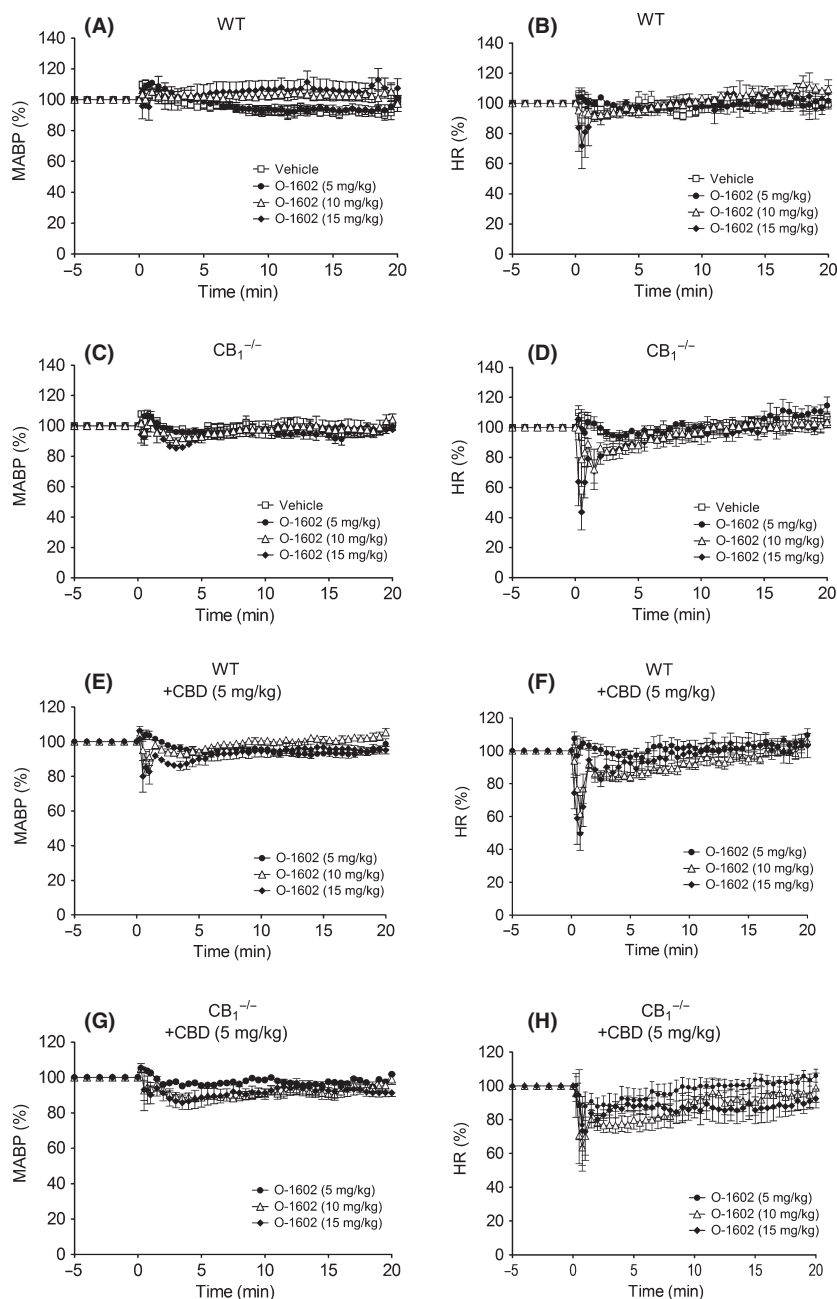
### Hemodynamic responses to O-1602

The second major finding of this study was that, on its own, O-1602 did not induce any changes in BP in normotensive rats or mice, regardless of whether they were anesthetized or in the conscious state. In light of reports that responses to some cannabinoids are only evident (Wheal et al. 2007) or are exaggerated (Ho and Gardiner 2009) in the presence of hypertension, we tested O-1602 in conscious hypertensive rats, but again found no measurable response. However, in conscious hypertensive rats coadministration of the selective CB<sub>1</sub> antagonist AM281 revealed a marked fall in arterial pressure in response to O-1602, while in conscious WT mice pretreated with CBD, and in CB<sub>1</sub><sup>-/-</sup> mice, the highest dose of O-1602 also elicited a depressor response. Taken together these findings suggest that, whatever receptor O-1602 is acting through, it appears to be under CB<sub>1</sub>-mediated inhibition under normal physiological conditions. Although there is increasing evidence that GPR18 is an important receptor target for O-1602 (McHugh et al. 2010), the finding that we could not observe a response to O-1602 in the presence of a CB<sub>1</sub> receptor antagonist in GPR55<sup>-/-</sup> mice, combined with the data from the GTPγS activation assay that demonstrated agonist activity of O-1602 at rat and mouse GPR55, suggests that the receptor mediating the depressor response to O-1602 is indeed GPR55. This is in contrast to a study using abnormal cannabidiol (abn-CBD), of which O-1602 is a synthetic analog and has similarly been described as both a GPR55 and GPR18 agonist, in which it was shown to induce a marked

vasodepressor response on its own in both WT and GPR55<sup>-/-</sup> mice, leading to the conclusion that GPR55 does not mediate the depressor responses to abn-CBD (Johns et al. 2007). However, if O-1602 and abn-CBD share a similar profile of activity at GPR55 and GPR18, how can the discrepancy between our findings with O-1602 and with abn-CBD be resolved? One simple explanation may be due to injection artefacts induced by the drug vehicle, since in our mice we have taken account of this in measuring the responses to each cannabinoid ligand. In the case of O-1602 we found that the vehicle produced a fall in arterial BP that was indistinguishable from the response to O-1602. In the study by Johns et al. (2007), however, they did not report any data for vehicle-control responses and therefore it is possible that the responses they reported were exaggerated by a vehicle effect. Alternatively, while various compounds have been shown to activate GPR18 they exhibit biased agonism in terms of the downstream signaling pathways that are activated (Console-Bram et al. 2014) and that, at least in a cell line stably expressing GPR18, O-1602 and abn-CBD exhibit different patterns of GPR18 activation. Therefore, the signaling pathways that elicit the relaxation of vascular smooth muscle in response to GPR55 activation may differ between abn-CBD and O-1602.

### Responses to AM251

AM251 on its own produced a small and transient, but significant, depressor response in both anesthetized rats and WT mice. This is the first report of a vasodepressor response to AM251 in vivo, but a recent report has shown AM251 to increase coronary flow in rat isolated hearts (Andrag and Curtis 2013). It is unlikely that this response to AM251 is due to CB<sub>1</sub> receptor blockade, since

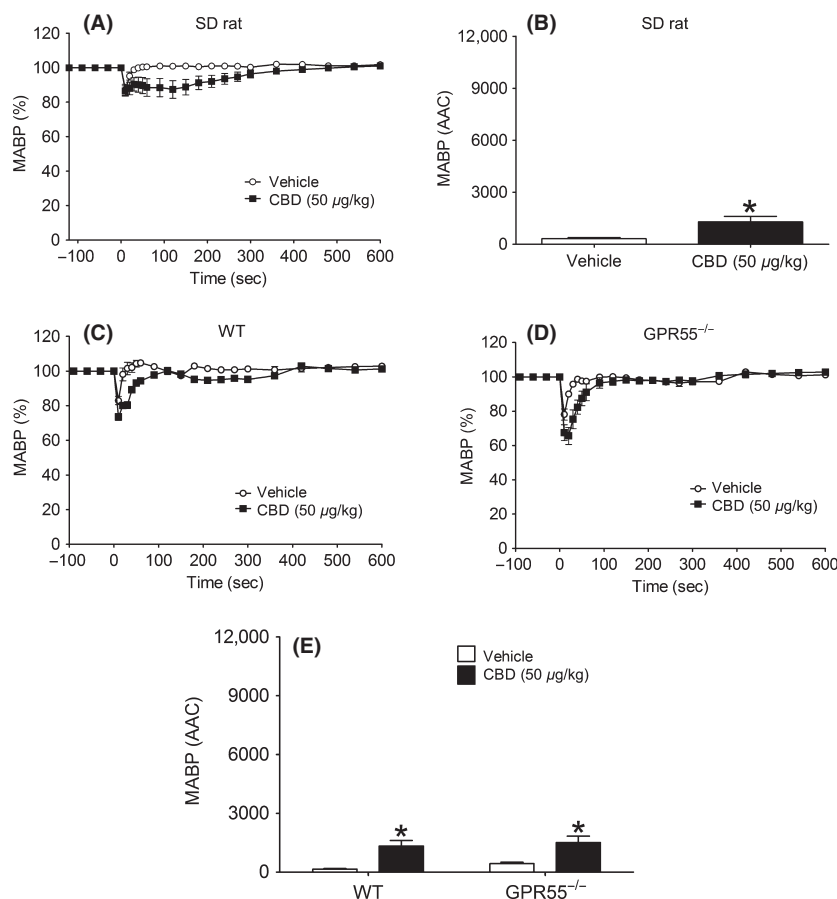


**Figure 6.** Blood pressure (left hand panels) and heart rate (right hand panels) responses to O-1602 (5–20 mg kg<sup>-1</sup>) in normotensive conscious mice in the absence and presence of CBD (5 mg kg<sup>-1</sup>). Baseline MABP's and HR's for each group were WT (128 ± 4 mmHg and 485 ± 9 bpm; *n* = 5; Panels A and B);  $CB_1^{-/-}$  (134 ± 2 mmHg and 438 ± 5 bpm; *n* = 5; Panels C and D); WT with CBD (122 ± 3 mmHg and 384 ± 6 bpm; *n* = 6; Panels E and F); and  $CB_1^{-/-}$  with CBD (135 ± 3 mmHg and 477 ± 5 bpm; *n* = 6; Panels G and H). Values shown are mean ± SEM. Values for areas above/under the curve are shown in Table 3.

inhibition of any constitutive  $CB_1$  activity in controlling vascular tone would be expected to increase, rather than decrease, BP and that the response would be prolonged. However, the data from the GTP $\gamma$ S-binding assay in the present studies show that in both rat and mouse membranes expressing GPR55, AM251 has agonist activity

with EC<sub>50</sub> values in the nanomolar range, lending support to other studies showing that AM251 acts as a GPR55 agonist (Ryberg *et al.* 2007; Kapur *et al.* 2009). At the doses of AM251 used in the present study (1 and 3 mg kg<sup>-1</sup>; MW 555.24 g), an approximate blood concentration of 60–70 nmol/L would be achieved, which



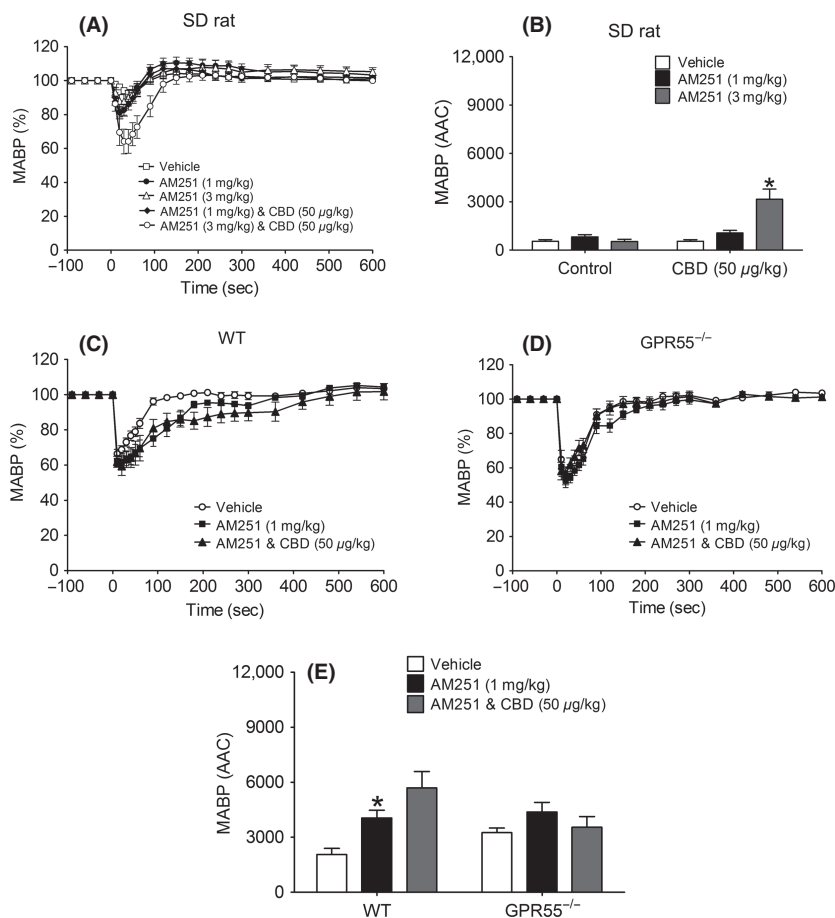


**Figure 7.** Hemodynamic responses to CBD ( $50 \mu\text{g kg}^{-1}$ ) and its vehicle in normotensive anesthetized rats (A and B) and WT and GPR55<sup>-/-</sup> mice (C–E). Baseline MABP's and HR's for each group were SD Rat ( $135 \pm 4$  mmHg and  $390 \pm 4$  bpm;  $n = 8$ ); WT ( $86 \pm 3$  mmHg and  $323 \pm 4$  bpm;  $n = 8$ ); and GPR55<sup>-/-</sup> ( $87 \pm 4$  mmHg and  $329 \pm 5$  bpm;  $n = 8$ ), respectively. Values shown are mean  $\pm$  SEM. \* $P < 0.05$  compared to vehicle response.

equates approximately to the  $\text{EC}_{50}$  values from the GTP $\gamma$ S assay. Therefore, it is not unreasonable to suggest that the depressor response to AM251 is mediated via GPR55. Indeed, in support of this we observed a blunted response to AM251 in GPR55<sup>-/-</sup> mice, although the larger (but not statistically significant) vehicle effect in this strain of mice means that this observation should be interpreted with caution.

In an attempt to further establish a role for GPR55 in mediating the response to AM251, we attempted to block the response to AM251 with CBD. However, instead of an inhibition of the response to AM251 we saw an enhanced response implying that an action of CBD at a different receptor site (possibly CB<sub>1</sub>) is somehow unmasking further the GPR55-stimulating effect of AM251. Indeed, there is increasing evidence of coexpression and “cross-talk” between cannabinoid receptors (reviewed in Pertwee et al. 2010) that supports the notion that ligands binding to the CB<sub>1</sub> receptor could influence the response to ligands acting through GPR55, and vice versa. For

example, expression of both CB<sub>1</sub> (Hogestatt and Zygmund 2002) and GPR55 (Daly et al. 2010) receptors has been shown in vascular smooth muscle and endothelium, which may lead to possible receptor dimerization. In terms of receptor cross-talk, GPR55 signaling is inhibited in the presence of CB<sub>1</sub>, while CB<sub>1</sub> receptor signaling is enhanced when GPR55 is coexpressed in the same cells (Kargl et al. 2012). It has similarly been shown in endothelial cells that when CB<sub>1</sub> and GPR55 receptor integrins are un-clustered, the intracellular signaling pathway activated by AEA are different from those activated when the integrins are clustered, due to CB<sub>1</sub> receptor uncoupling (Waldeck-Weiermair et al. 2008). In vitro functional evidence to support this concept arises from observations that some cannabinoid ligands (including AM251 and rimonabant) can either inhibit or enhance the downstream signaling following activation of GPR55 by lysophosphatidylinositol (LPI), now regarded as the endogenous ligand for GPR55 (Kotsikorou et al. 2011). Our current study is, we believe, the first functional in vivo evidence of an



**Figure 8.** Hemodynamic responses to AM251 (1 and 3 mg kg<sup>-1</sup>) in the absence and presence of CBD (50 μg kg<sup>-1</sup>) in normotensive anesthetized rats (A and B) and WT and GPR55<sup>-/-</sup> mice (C-E). Baseline MABP's and HR's for each group of rats were AM251 alone (123 ± 5 mmHg and 338 ± 6 bpm; n = 7); CBD and AM251 (131 ± 2 mmHg and 350 ± 5 bpm; n = 8), respectively. Baseline MABP's and HR's for each group of WT mice were AM251 alone (87 ± 4 mmHg and 329 ± 6 bpm; n = 8); CBD and AM251 (86 ± 3 mmHg and 323 ± 4 bpm; n = 8), respectively. Baseline MABP's and HR's for each group of GPR55<sup>-/-</sup> mice were AM251 alone (89 ± 3 mmHg and 339 ± 5 bpm; n = 8) and CBD and AM251 (87 ± 3 mmHg and 329 ± 5 bpm; n = 8), respectively. Values shown are mean ± SEM. \*P < 0.05 compared to vehicle response.

interaction of this nature, at least in terms of cardiovascular hemodynamics, and if CBD is indeed acting as an inhibitor at CB<sub>1</sub> then altered signaling could explain the enhanced response to GPR55 activation by AM251.

Although the principal purpose of this study was to profile the various ligands for their action at CB<sub>1</sub> and GPR55 receptors to induce a depressor response, we did make some observations that may help to understand the role that CB<sub>1</sub> and GPR55 play in physiological cardiovascular control. For example, the effects of O-1602 on HR in conscious WT mice, while on the basis of the observed pharmacology of this compound cannot be attributed to an action at GPR55, is nevertheless intriguing. When given alone, O-1602 caused a small, but significant, bradycardia at the highest dose tested, however, when mice were pretreated with CBD this bradycardic response was

markedly exaggerated and evident at much lower doses; an enhanced response to O-1602 was also seen in CB<sub>1</sub><sup>-/-</sup> mice, suggesting that CBD may be acting as a CB<sub>1</sub> antagonist. However, rather than having no effect in the absence of the CB<sub>1</sub> receptor, CBD blunted the O-1602 response in CB<sub>1</sub><sup>-/-</sup> mice, suggestive that in the absence of CB<sub>1</sub>, CBD is acting at an additional site. A reduced HR could be either through a direct action on the sinoatrial node, or through interference with cardiac sympathetic control, either through central or peripheral sites. We have found no reports of direct actions of cannabinoid ligands on the pacemaker cells of the heart, but cannot rule this out as a site of action. However, since the bradycardic response was only observed in conscious animals, it is likely to be mediated by alterations in autonomic cardiovascular control as it is well documented that

anesthesia itself suppresses cardiac sympathetic outflow. Cannabinoids can suppress sympathetic outflow from the nucleus tractus solitarius (NTS) by a CB<sub>1</sub> and GABA-mediated mechanism (Seagard *et al.* 2004; Brozowski *et al.* 2005) and have been demonstrated to induce cardiovascular depression through a combination of both decreased sympathetic and increased vagal outflow (Niederhoffer *et al.* 2003). Although it remains to be determined whether an action of O-1602 at GPR18 is responsible for producing the bradycardic response, a recent study has demonstrated an important central role for GPR18 in BP control (Penumarti and Abdel-Rahman 2014). However, in light of the fact that CB<sub>1</sub> antagonism or receptor knockout markedly enhanced the depressive effect of O-1602 on HR, the modulation of the central cardiovascular control centers by cannabinoids may involve an intricate balance between the activities of different receptors.

We also observed that baseline BPs were higher in conscious (but not anesthetized) GPR55<sup>-/-</sup> (165 ± 2 mmHg) compared to WT (128 ± 4 mmHg; *P* < 0.01) mice, implying a role for this receptor in normal physiological cardiovascular control and that a fully functioning sympathetic tone is required to see this effect. We also observed that metoprolol, which was used to prevent excessive baroreceptor reflex-mediated correction of BP responses in conscious animals, induced a profound and long-lasting bradycardia in the conscious GPR55<sup>-/-</sup> mice, suggesting that in these animals there is an upregulated parasympathetic tone that occurs either as a compensatory mechanism in response to the increased basal arterial pressure, or through a loss of some GPR55-mediated contribution to central cardiovascular control. Although GPR55 is widely distributed in the brain, in particular the caudate nucleus and the putamen (Sawzdargo *et al.* 1999), thus far there have been no reports of GPR55 expression in the NTS; therefore, it is not possible to speculate to any great extent as to whether or not central GPR55 receptors play a role in cardiovascular control. Second, the raised BP (presumably due to increased peripheral resistance) and profound response to withdrawal of cardiac β-adrenoceptor stimulation may be indicative of an altered (heightened) sensitivity of adrenoceptors, suggestive of some interaction between these receptors and GPR55. Indeed, we have recently shown that GPR55<sup>-/-</sup> mice exhibit a reduced inotropic response to β-adrenoceptor stimulation (Walsh *et al.* 2014). Clearly, therefore, the potential role of GPR55 in cardiovascular control requires further detailed study.

## Acknowledgements

C. Y. Hepburn was supported by an Institute for Health & Wellbeing Research Studentship. S. K. Walsh received

support from the Institute for Health & Wellbeing Research Strategic Funding Initiative.

## Author Contributions

CLW and PG were the principal investigators for the studies undertaken in Aberdeen and Mölndal, respectively, and were responsible for the writing of the manuscript. CYH, OK, and SKW. performed and analyzed the data from the anesthetized animal studies, while AA, AL, ER and SH performed and analyzed the data from the conscious animal studies. All authors contributed to the drafting of the manuscript.

## Disclosure

None declared.

## References

- Andrag E, Curtis MJ (2013). Feasibility of targeting ischaemia-related ventricular arrhythmias by mimicry of endogenous protection by endocannabinoids. *Br J Pharmacol* 169: 1840–1848.
- Baker D, Pryce G, Davies WL, Hiley CR (2006). In silico patent searching reveals a new cannabinoid receptor. *Trends Pharmacol Sci* 27: 1–4.
- Brozowski DT, Dean C, Hopp FA, Seagard JL (2005). Uptake blockade of endocannabinoids in the NTS modulates baroreflex-evoked sympathoinhibition. *Brain Res* 1059: 197–202.
- Console-Bram L, Brailoiu E, Brailoiu GC, Sharir H, Abood ME (2014). Activation of GPR18 by cannabinoid compounds: a tale of biased agonism. *Br J Pharmacol* 171: 3908–3917.
- Daly CJ, Ross RA, Whyte J, Henstridge CM, Irving AJ, McGrath JC (2010). Fluorescent ligand binding reveals heterogeneous distribution of adrenoceptors and ‘cannabinoid-like’ receptors in small arteries. *Br J Pharmacol* 159: 787–796.
- Ford WR, Honan SA, White R, Hiley CR (2002). Evidence of a novel site mediating anandamide-induced negative inotropic and coronary vasodilator responses in rat isolated hearts. *Br J Pharmacol* 135: 1191–1198.
- Gardiner SM, March JE, Kemp PA, Bennett T (2002). Complex regional haemodynamic effects of anandamide in conscious rats. *Br J Pharmacol* 135: 1889–1896.
- Harrison C, Traynor JR (2003). The [35S]GTPγ binding assay: approaches and applications in pharmacology. *Life Sci* 74: 489–508.
- Henstridge CM, Balenga NA, Kargl J, Andradas C, Brown AJ, Irving A, *et al.* (2011). Minireview. Recent developments in the physiology and pathology of the lysophosphatidylinositol-sensitive receptor GPR55. *Mol Endocrinol* 25: 1835–1848.

- Hillard CJ, Manna S, Greenberg MJ, DiCamelli R, Ross RA, Stevenson LA, et al. (1999). Synthesis and characterization of potent and selective agonists of the neuronal cannabinoid receptor (CB1). *J Pharmacol Exp Ther* 289: 1427–1433.
- Ho WS, Gardiner SM (2009). Acute hypertension reveals depressor and vasodilator effects of cannabinoids in conscious rats. *Br J Pharmacol* 156: 94–104.
- Ho WS, Hiley CR (2003). Vasodilator actions of abnormal-cannabidiol in rat isolated small mesenteric artery. *Br J Pharmacol* 138: 1320–1332.
- Ho WS, Hiley CR (2004). Vasorelaxant activities of the putative endocannabinoid virodhamine in rat isolated small mesenteric artery. *J Pharm Pharmacol* 56: 869–875.
- Hogestatt ED, Zygmund PM (2002). Cardiovascular pharmacology of anandamide. *Prostaglandins Leukot Essent Fatty Acids* 66: 343–351.
- Howlett AC, Barth F, Bonner TI, Cabral G, Casellas P, Devane WA, et al. (2002). International Union of Pharmacology: XXVII. Classification of cannabinoid receptors. *Pharmacol Rev* 54: 161–202.
- Jarai Z, Wagner JA, Varga K, Lake KD, Compton DR, Martin BR, et al. (1999). Cannabinoid-induced mesenteric vasodilation through an endothelial site distinct from CB<sub>1</sub> or CB<sub>2</sub> receptors. *Proc Natl Acad Sci USA* 96: 14136–14141.
- Johns DG, Behm DJ, Walker DJ, Ao Z, Shapland EM, Daniels DA, et al. (2007). The novel endocannabinoid receptor GPR55 is activated by atypical cannabinoids but does not mediate their vasodilator effects. *Br J Pharmacol* 152: 825–831.
- Kapur A, Zhao P, Sharir H, Bai Y, Caron MG, Barak LS, et al. (2009). Atypical responsiveness of the orphan receptor GPR55 to cannabinoid ligands. *J Biol Chem* 284: 29817–29827.
- Kargl J, Balenga N, Parzmair GP, Brown AJ, Heinemann A, Waldhoer M (2012). The cannabinoid receptor CB<sub>1</sub> modulates the signaling properties of lysophosphatidylinositol receptor GPR55. *J Biol Chem* 287: 44234–44248.
- Kilkenny C, Browne W, Cuthill IC, Emerson M, Altman DG; NC3Rs Reporting Guidelines Working Group (2010). Animal research: reporting in vivo experiments: the ARRIVE guidelines. *Br J Pharmacol* 160: 1577–1579.
- Kotsikorou E, Madrigal KE, Hurst DP, Sharir H, Lynch DL, Heynen-Genel S, et al. (2011). Identification of the GPR55 agonist binding site using a novel set of high-potency GPR55 selective ligands. *Biochemistry* 50: 5633–5647.
- Lake KD, Martin BR, Kunos G, Varga K (1997). Cardiovascular effects of anandamide in anesthetized and conscious normotensive and hypertensive rats. *Hypertension* 29: 1204–1210.
- Lan R, Liu Q, Fan P, Lin S, Fernando SR, McCallion D, et al. (1999). Structure-activity relationships of pyrazole derivatives as cannabinoid receptor antagonists. *J Med Chem* 42: 769–776.
- Malinowska B, Kwolek G, Gothert M (2001). Anandamide and methanandamide induce both vanilloid VR1- and cannabinoid CB1 receptor-mediated changes in heart rate and blood pressure in anaesthetized rats. *Naunyn Schmiedebergs Archives of Pharmacology* 364: 562–569.
- Malinowska B, Baranowska-Kuczko M, Schlicker E (2012). Triphasic blood pressure responses to cannabinoids: do we understand the mechanism? *Br J Pharmacol* 165: 2073–2088.
- McHugh D, Hu SS, Rimmerman N, Juknat A, Vogel Z, Walker JM, et al. (2010). N-arachidonoyl glycine, an abundant endogenous lipid, potently directs cellular migration through GPR18, the putative abnormal cannabidiol receptor. *BMC Neurosci* 11: 44 (abstract)
- Niederhoffer N, Schmid K, Szabo B (2003). The peripheral sympathetic nervous system is the major target of cannabinoids in eliciting cardiovascular depression. *Naunyn Schmiedebergs Arch Pharmacol* 367: 434–443.
- Parmar N, Ho WS (2010). N-arachidonoyl glycine, an endogenous lipid that acts as a vasorelaxant via nitric oxide and large conductance calcium-activated potassium channels. *Br J Pharmacol* 160: 594–603.
- Penumarti A, Abdel-Rahman AA (2014). The novel endocannabinoid receptor GPR18 is expressed in the rostral ventrolateral medulla and exerts tonic restraining influence on blood pressure. *J Pharmacol Exp Ther* 349: 29–38.
- Pertwee RG (2007). GPR55: a new member of the cannabinoid receptor clan? *Br J Pharmacol* 152: 984–986.
- Pertwee RG (2008). The diverse CB<sub>1</sub> and CB<sub>2</sub> receptor pharmacology of three plant cannabinoids: delta9-tetrahydrocannabinol, cannabidiol and delta9-tetrahydrocannabivarin. *Br J Pharmacol* 153: 199–215.
- Pertwee RG, Howlett AC, Abood ME, Alexander SP, Di Marzo V, Elphick MR, et al. (2010). International Union of Basic and Clinical Pharmacology. LXXIX. Cannabinoid receptors and their ligands: beyond CB(1) and CB(2). *Pharmacol Rev* 62: 588–631.
- Ryberg E, Larsson N, Sjogren S, Hjorth S, Hermansson NO, Leonova J, et al. (2007). The orphan receptor GPR55 is a novel cannabinoid receptor. *Br J Pharmacol* 152: 1092–1101.
- Sawzdargo M, Nguyen T, Lee DK, Lynch KR, Cheng R, Heng HH, et al. (1999). Identification and cloning of three novel human G protein-coupled receptor genes GPR52, PsiGPR53 and GPR55: GPR55 is extensively expressed in human brain. *Brain Res Mol Brain Res* 64: 193–198.
- Seagard JL, Dean C, Patel S, Rademacher DJ, Hopp FA, Schmeling WT, et al. (2004). Anandamide content and interaction of endocannabinoid/GABA modulatory effects in

the NTS on baroreflex-evoked sympathoinhibition. *Am J Physiol Heart Circ Physiol* 286: H992–H1000.

Stanley CP, Hind WH, O'Sullivan SE (2012). Is the cardiovascular system a therapeutic target for CBD? *Br J Clin Pharmacol* 75: 313–322.

Szekeres M, Nádasy G, Turu G, Soltész-Katona E, Tóth ZE, Balla A, et al. (2012). Angiotensin II induces vascular endocannabinoid release, which attenuates its vasoconstrictor effect via CB1 cannabinoid receptors. *J Biol Chem* 287: 31540–31550.

Varga K, Lake KD, Huangfu D, Guyenet PG, Kunos G (1996). Mechanism of the hypotensive action of anandamide in anesthetized rats. *Hypertension* 28: 682–686.

Wagner JA, Varga K, Jarai Z, Kunos G (1999). Mesenteric vasodilation mediated by endothelial anandamide receptors. *Hypertension* 33: 429–434.

Waldeck-Weiermair M, Zoratti C, Osibow K, Balenga N, Goessnitzer E, Waldhoer M, et al. (2008). Integrin clustering enables anandamide-induced Ca<sup>2+</sup> signaling in endothelial cells via GPR55 by protection against CB1-receptor-triggered repression. *J Cell Sci* 121: 1704–1717.

Walsh SK, Hector EE, Andréasson AC, Jönsson-Rylander AC, Wainwright CL (2014). GPR55 deletion in mice leads to age-related ventricular dysfunction and impaired adrenoceptor-mediated inotropic responses. *PLoS ONE* 9: E108999.

Wheal AJ, Bennett T, Randall MD, Gardiner SM (2007). Cardiovascular effects of cannabinoids in conscious spontaneously hypertensive rats. *Br J Pharmacol* 152: 717–724.

Whyte LS, Ryberg E, Sims NA, Ridge SA, Mackie K, Greasley PJ, et al. (2009). The putative cannabinoid receptor GPR55 affects osteoclast function in vitro and bone mass in vivo. *PNAS* 106: 16511–16516.

Zimmer A, Zimmer AM, Hohmann AG, Herkenham M, Bonner TI (1999). Increased mortality, hypoactivity, and hypoalgesia in cannabinoid CB<sub>1</sub> receptor knockout mice. *Proc Natl Acad Sci USA* 96: 5780–5785.

## Supporting Information

Additional Supporting Information may be found in the online version of this article:

**Table S1.** Depressor responses to O-1602 in conscious WT and GPR55<sup>-/-</sup> mice pretreated with metoprolol to remove baroreceptor reflex correction of blood pressure. Responses were determined in the absence and presence of AM281 (10 mg kg<sup>-1</sup>). Baseline MABP's and HR's for each group were: WT (142 ± 5 mmHg and 393 ± 6 bpm; *n* = 5); and GPR55<sup>-/-</sup> (165 ± 2 mmHg\* and 436 ± 8 bpm; *n* = 7; \**P* < 0.05 compared to WT mice), respectively. Values are mean ± SEM.