

# Epstein-Barr Virus-Encoded BАРF1 Protein is a Decoy Receptor for Macrophage Colony Stimulating Factor and Interferes with Macrophage Differentiation and Activation

Eveline K. Hoebe,<sup>1</sup> Tessa Y.S. Le Large,<sup>1</sup> Nicolas Tarbouriech,<sup>2</sup> Dinja Oosterhoff,<sup>3</sup>  
Tanja D. De Gruij,<sup>3</sup> Jaap M. Middeldorp,<sup>1</sup> and Astrid E. Greijer<sup>1</sup>

## Abstract

Epstein-Barr virus (EBV), like many other persistent herpes viruses, has acquired numerous mechanisms for subverting or evading immune surveillance. This study investigates the role of secreted EBV-encoded BАРF1 protein (sBАРF1) in creating an immune evasive microenvironment. Wild-type consensus BАРF1 was expressed in the human 293 cell line and purified. This native hexameric sBАРF1 had inhibitory capacity on macrophage colony stimulating factor (M-CSF)-stimulated, and not on granulocyte macrophage-colony stimulating factor (GM-CSF)-stimulated growth and differentiation of myeloid cells. Antibodies specific to hexameric sBАРF1 were able to block this effect. M-CSF was shown to interact with sBАРF1 via the protruding N-terminal loops involving Val38 and Ala84. Each BАРF1 hexamer was capable of binding three M-CSF dimers. Mutations in the BАРF1 loops greatly affected M-CSF interaction, and showed loss of growth inhibition. Analysis of the activation state of the M-CSF receptor *c-fms* and its downstream kinase pathways showed that sBАРF1 prevented M-CSF-induced downstream phosphorylation. Since M-CSF is an important factor in macrophage differentiation, the effect of sBАРF1 on the function of monocyte-derived macrophages was evaluated. sBАРF1 affected overall survival and morphology and significantly reduced expression of macrophage differentiation surface markers such as CD14, CD11b, CD16, and CD169. Macrophages differentiating in the presence of sBАРF1 showed impaired responses to lipopolysaccharide and decreased oxygen radical formation as well as reduced phagocytosis of apoptotic cells. In conclusion, EBV sBАРF1 protein is a potent decoy receptor for M-CSF, hampering the function and differentiation of macrophages. These results suggest that sBАРF1 contributes to the modulation of immune responses in the microenvironment of EBV-positive carcinomas.

## Introduction

EPSTEIN-BARR VIRUS (EBV) IS A WIDESPREAD HUMAN GAMMA-HERPESVIRUS with B lymphocyte and epithelial cell tropism, which persistently infects about 90% of the world population. EBV persistence occurs in a tight balance with the immune system, and is emphasized by the higher risk for lymphoproliferative diseases in immunosuppressed patients. However, EBV is causally linked to several carcinomas and lymphomas in immunocompetent individuals as well. EBV is associated with approximately 100% of undifferentiated nasopharyngeal carcinomas (NPC) (3,24,42), and about 10% of gastric carcinomas (GC) worldwide (32,50,58). The EBV genome contains over 80 open reading frames, of which only a

few latent genes are expressed in EBV-related malignancies (2,10,27). Strikingly, EBV-positive epithelial malignancies express a viral oncogene encoded in the BamHI-A rightward frame 1 (BАРF1), which is absent from EBV-positive lymphomas (9,16,51). In the lytic cycle, BАРF1 is transcribed in both epithelial and lymphoid cell types (59).

Computer-assisted amino acid sequence analysis of sBАРF1 indicated weak homology with a conserved region found in several members of the tyrosine kinase family, including the receptor for macrophage colony stimulating factor (M-CSF), platelet-derived growth factor (PDGF) receptor, fibroblast growth factor (FGF) receptor, and hepatocyte growth factor (HGF) receptor (6,52). The homology with these receptors is restricted to a conserved structural region

<sup>1</sup>Department of Pathology, and <sup>3</sup>Department of Medical Oncology, VU University Medical Center, Amsterdam, The Netherlands.

<sup>2</sup>Unit of Virus Host Cell Interactions, European Molecular Biology Laboratory, Centre National de la Recherche Scientifique, Grenoble, France.

not involved in the ligand binding domains (52). Full-length BARF1 has homology with the T-cell receptor co-stimulatory molecule CD80 (54). Prior studies with monomeric Fc-tagged BARF1 indicated that BARF1 is a viral scavenger of M-CSF, binding all three isoforms, and acting as a functional antagonist for M-CSF (36,52). However, subsequent studies on the structure of secreted BARF1 revealed a hexameric molecule, which may differ in structure and function from monomeric Fc-tagged BARF1 (18,54,56).

M-CSF is synthesized by many cell types, including endothelial cells, fibroblasts, bone marrow stromal cells, osteoblasts, and keratinocytes. Serum levels of M-CSF in normal adults range from 1.7–8.4 ng/mL (22), but are elevated during pregnancy, infection, lymphomas, and breast, ovary, and endometrial carcinomas (5,7,22,49). High-level secreted BARF1 was observed in serum samples of NPC patients (19). M-CSF is a pleiotropic growth factor with many roles in the immune system; M-CSF is important for regulating the viability, proliferation, and differentiation of mononuclear phagocytes from monocytes to macrophages, but also for the differentiation of Langerhans and other dendritic cell (DC) subsets (5,20,28,35,40,48). The most appreciated function of M-CSF relates to the induction of monocyte differentiation into resident macrophages (M2 macrophages) (14,40).

EBV-infected monocytes have been suggested as a vehicle for virus transmission between the blood compartment and oral epithelium, and EBV infection *in vitro* alters monocyte function by affecting innate inflammatory functions (13,30,47,55). Following differentiation into DCs, monocytes become resistant to apoptosis caused by EBV infection (13). M-CSF inhibition by secreted BARF1 might be instrumental for EBV in restricting maturation of macrophage effector functions, thus ensuring that these immune cells support dissemination of viral progeny rather than elimination of the internalized or bound virus. In NPC, lymphocyte infiltration does not affect prognosis (23,26), but infiltration of NPC with mononuclear cells is correlated with a higher survival rate (12,39), indicating their involvement in tumor cell eradication. An EBV-infected tumor cell, expressing viral antigens that can be recognized, might thus benefit from local myeloid suppression resulting from M-CSF inhibition by BARF1. Humoral immune responses to BARF1 can be detected, but are relatively low (18). BARF1 was recently shown to trigger both CD4 and CD8 cellular immune responses in NPC patients, providing a basis for specific immunotherapy (29). However, the lymphocytes from the NPC tumor environment are functionally impaired (23,26). By binding and functionally inhibiting M-CSF, sBARF1 might interfere with myeloid sentinel functions, and thus contribute to an immunological silence facilitating immune escape. Clearly, more insight into how EBV manipulates the immune system is necessary for the progress of advanced immune therapy.

In this study, an NPC-sequence-derived native hexameric sBARF1 protein was used to assess its biological effects as a decoy receptor for M-CSF, and to evaluate its effects on cells of myeloid lineage. We showed that M-CSF-induced macrophage differentiation, function, and survival is severely impaired in the presence of native sBARF1, further characterizing it as a viral immune suppressive factor with possible effects on both viral dissemination and cancer immune escape. Mutations in the N-terminal loops of sBARF1 demon-

strated the specificity of the sBARF1/M-CSF interaction, indicating that future therapies should be aimed at this site.

## Materials and Methods

### Cell culture

Human cytokine-dependent MUTZ-3 cells were obtained from the German collection of microorganisms and cell cultures DSMZ (Braunschweig, Germany), and cultured in Costar 12-well tissue culture plates (Corning, Amsterdam, Netherlands), at 0.4 million cells in 2 mL MEM- $\alpha$  containing 10% FCS, 100 U/mL sodium penicillin, 100  $\mu$ g/mL streptomycin sulfate, 2 mM L-glutamine (P/S/G), and 50  $\mu$ M  $\beta$ -mercaptoethanol, supplemented with 10% conditioned medium from the human renal carcinoma cell line 5637 (31,43,44). Peripheral blood mononuclear cells (PBMCs) were isolated from buffy coats of healthy donors by Ficoll density gradient centrifugation. CD14<sup>+</sup> monocytes were isolated from PBMCs by magnetic sorting with anti-CD14 microbeads (Miltenyi Biotec, Bergisch Gladbach, Germany), according to the manufacturer's protocol. Monocytes were differentiated into monocyte-derived macrophages (Mo $\Phi$ ) in 5–7 days in IMDM medium (Invitrogen, Carlsbad, CA) supplemented with 10% FCS, P/S/G, and 10 ng/mL human M-CSF (Miltenyi Biotec). Where indicated, M-CSF was pre-incubated with purified native human sBARF1 (200 ng/mL unless indicated otherwise) (18) for 1 h at room temperature before adding it to the monocytes to create sBARF1-treated macrophages (sBARF1-treated Mo $\Phi$ ).

### sBARF1 production

Soluble hexameric BARF1 protein (sBARF1), cloned from a NPC-derived EBV isolate and expressed in HEK293 human epithelial cells, was purified to homogeneity from serum-free supernatants by lectin-affinity chromatography as previously described (18,21).

### Site-directed mutagenesis

M-CSF binding site mutants of BARF1 were created using the Quickchange Lightning multi-site-directed mutagenesis kit according to the manufacturer's instructions (Stratagene, Santa Clara, CA), to incorporate specific mutations into the original pcDNA4-BARF1 expression vector. Mutant sBARF1 was produced and purified exactly the same as the wild-type sBARF1.

### Immunoprecipitation

Rabbit polyclonal antibodies specifically reactive with native hexameric BARF1 were covalently bound to Protein-G beads (GE Healthcare, Waukesha, WI) using 6 mg/mL dimethylpimilidate in 0.2 M Na<sub>2</sub>B<sub>4</sub>O<sub>7</sub>•10H<sub>2</sub>O at pH 9 for 1 h at room temperature, followed by three wash steps with 0.2 M ethanolamine. sBARF1 and attached protein was immunoprecipitated (IP) from medium by anti-BARF1 beads, eluted with 0.2 M glycine (pH 3.0), and neutralized with 3 M Tris (pH 8.0).

### SDS-PAGE and Western blot

Cells were lysed in IP buffer containing Protease Inhibitor Cocktail (Roche, Basel, Switzerland) and sonicated. Cell debris was removed by centrifugation and protein concentration

was determined using the BCA Protein Assay kit (Pierce, Rockford, IL). Cell extracts and IP samples were diluted in  $2\times$  loading buffer (Bio-Rad, Hercules, CA) with  $\beta$ -mercaptoethanol, denatured for 5 min at  $95^{\circ}\text{C}$ , and separated on a 12.5% SDS-PAGE gel. After transferring to Hybond ECL nitrocellulose membranes (GE Healthcare), the membranes were blocked in PBS with additional Tween-20 (PBST) containing 3% non-fat dried milk for 1 h at room temperature. Anti-M-CSF antibodies (1:500; Santa Cruz Biotechnology, Santa Cruz, CA), or anti-BARF1 4A6 antibodies (1:100) (18), were incubated overnight at  $4^{\circ}\text{C}$  in PBST with 5% BSA. After three wash steps with PBST, the appropriate HRP-labeled secondary antibodies (Dako, Glostrup, Denmark) were incubated 1:2000 in 3% milk for 1 h, and the antibody was removed by three wash steps with PBST, followed by visualization with ECL (GE Healthcare). Pathscan Multiplex Western Cocktail (#5301) was used to visualize phosphorylated MAPK, Akt, and phosphorylated M-CSF receptor (#3151; Cell Signaling Technology, Danvers, MA), according to the manufacturer's protocol.

#### Viability assay

Approximately 100,000 Mo $\Phi$  were cultured in 200  $\mu\text{L}$  medium per well in 96-well plates. Viability was determined with a cell proliferation kit (MTT; Roche), according to the manufacturer's protocol. Absorbance was measured with a Tecan Spectrafluor at 590 nm.

#### Giemsa and nitroblue tetrazolium staining

Following methanol fixation, cells were stained with Giemsa solution (Merck Sharp & Dohme, Whitehouse Station, NJ) 1:5 in  $\text{H}_2\text{O}$  for 1 h. To determine the production of free radicals upon lipopolysaccharide (LPS) stimulation, Mo $\Phi$  were pre-sensitized with 200 U/mL human interferon- $\gamma$  (Miltenyi Biotec) for 2 h. Subsequently 1  $\mu\text{g}/\text{mL}$  LPS (*E. coli* strain 055:B5; Dako) and 0.04% nitroblue tetrazolium (NBT; Sigma-Aldrich, Buchs, Switzerland) were added and incubated for 4 h. After treatment, the cells were fixed and light microphotographs ( $40\times$ ) were taken with Leica software (Wetzlar, Germany).

#### Flow cytometry

Mo $\Phi$  were harvested with 0.05 mM EDTA (Merck Sharp & Dohme) in PBS and washed with fluorescence-activated cell sorter (FACS) buffer (0.2% BSA and 0.002%  $\text{NaN}_3$  in PBS), before staining with monoclonal antibodies specific for macrophage surface markers for at least 30 min at  $4^{\circ}\text{C}$ . The monoclonal antibodies used were fluorescein isothiocyanate (FITC)-conjugated IgG $_1$  (isotype control), phycoerythrin (PE)-conjugated against IgG $_1$  (isotype control), FITC-conjugated against CD14, CD16, and CD64, PE-conjugated against HLA-DR, CD11b, CD11c, CD36, and CD1a (BD Biosciences, Franklin Lakes, NJ), and FITC-conjugated against CD169 (Abcam, Cambridge, U.K.). After washing, the cells were analyzed on a FACSCalibur II system (BD Biosciences). The results were analyzed with CellQuest Pro software.

#### Phagocytosis assay

Mo $\Phi$  were cultured on glass chamber slides during differentiation. Jurkat cells were dyed fluorescent green using PKH67 dye (Invitrogen) according to the manufacturer's

protocol, 1 day before lethal irradiation with 50 Gy. After 5 h, apoptotic cells were added to the macrophages. After 1.5 h incubation, the macrophages were washed four times with ice-cold PBS and fixed with 4% paraformaldehyde at  $4^{\circ}\text{C}$  for 30 min. To visualize macrophage contours, the cells were washed three times with PBS, permeabilized with 0.1% Triton-X100 in PBS, and incubated with 1:40 rhodamine phalloidin (Sigma Aldrich) in PBS and 5% BSA for 1 h at room temperature. After washing, the slides were cover-slipped, and pictures were taken using a Leica confocal microscope.

#### Data analysis

The Wilcoxon signed rank test was performed using GraphPath-4 statistical software (La Jolla, CA), and  $p$  values  $<0.05$  were considered significant.

## Results

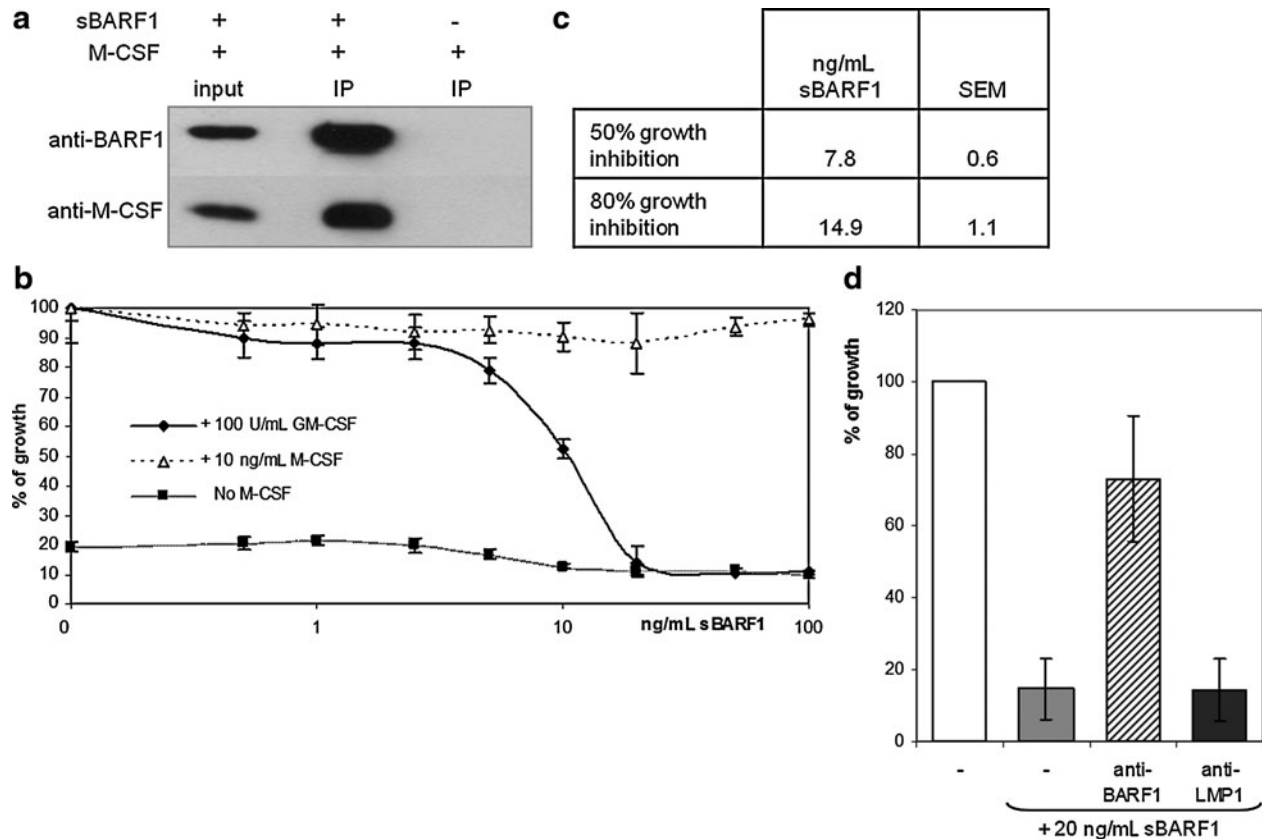
### Secreted BARF1 protein binds and functionally inhibits M-CSF

To evaluate whether the native secreted hexameric form of BARF1 could bind M-CSF, co-immunoprecipitations were performed in DMEM supplemented with purified sBARF1 or M-CSF or both. Protein-G beads covalently linked to anti-sBARF1 antibody, recognizing the hexameric form of sBARF1, were used to precipitate BARF1 from medium with or without M-CSF. Immunoblot analysis revealed that M-CSF was specifically precipitated when BARF1 was present in the medium (Fig. 1a), indicating a direct binding of sBARF1 to M-CSF.

The human myeloid cell line MUTZ-3 was used to evaluate whether sBARF1 binding to M-CSF functionally interfered with cell proliferation. These cells are dependent on human cytokines for *in vitro* growth, and thus can be used to evaluate functional cytokine levels. MUTZ-3 cells were cultured in the presence of 10 ng/mL M-CSF, which was pre-incubated with sBARF1 at different concentrations. As shown in Fig. 1b, sBARF1 was able to block M-CSF-dependent growth of MUTZ-3 cells in a dose-dependent manner. Concentrations higher than 17 ng/mL of purified sBARF1 were able to block 10 ng/mL M-CSF, equaling one sBARF1 hexamer binding three M-CSF dimers. In addition, MUTZ-3 cells can also be maintained in the presence of granulocyte macrophage-colony stimulating factor (GM-CSF), which has a tertiary structure similar to M-CSF, but a different quaternary structure and receptor interaction. Of note, sBARF1 was not able to block GM-CSF-dependent cell proliferation, demonstrating its binding specificity for M-CSF, and confirming that sBARF1 by itself has no toxic or harmful effect (Fig. 1b). The proliferation of MUTZ-3 cells in the presence of sBARF1 could be restored by pre-incubation with a neutralizing antibody against BARF1 (Fig. 1d). These results showed that sBARF1 is able to functionally inhibit M-CSF, but not GM-CSF, and that this can be neutralized by specific antibodies.

### Structural basis of the interaction between M-CSF and sBARF1

Sequence analysis revealed structural homology of sBARF1 with several growth factor receptors, but gave no indication which parts of the sBARF1 hexamer are



**FIG. 1.** (a) sBARF1 binds and functionally interferes with M-CSF. Immunoprecipitation, using linked anti-sBARF1 beads, was performed with M-CSF, in the presence or absence of sBARF1. As a control, medium with both sBARF1 and M-CSF was loaded. M-CSF was specifically precipitated when sBARF1 was present. (b) MUTZ-3 cells were cultured for 3 d, with or without 10 ng/mL M-CSF or 100 U/mL GM-CSF pre-incubated for 1 h with sBARF1, at different concentrations. Growth was determined using the MTT proliferation test. The growth over 3 d with growth factor was set at 100%, and values at plating were set at 0%. We found that  $\pm 17$  ng/mL sBARF1 was sufficient to block the proliferation induced by 10 ng/mL M-CSF, but not GM-CSF. (c) Inhibitory concentration (IC) values for 10 ng/mL M-CSF and the accompanying standard error of the mean (SEM). (d) The effect of sBARF1 could partially be restored by pre-incubating sBARF1 with specific antibodies; 20 ng/mL of sBARF1 was used to inhibit M-CSF-dependent growth of MUTZ-3 cells. Antibodies against LMP1 were used as a negative control.

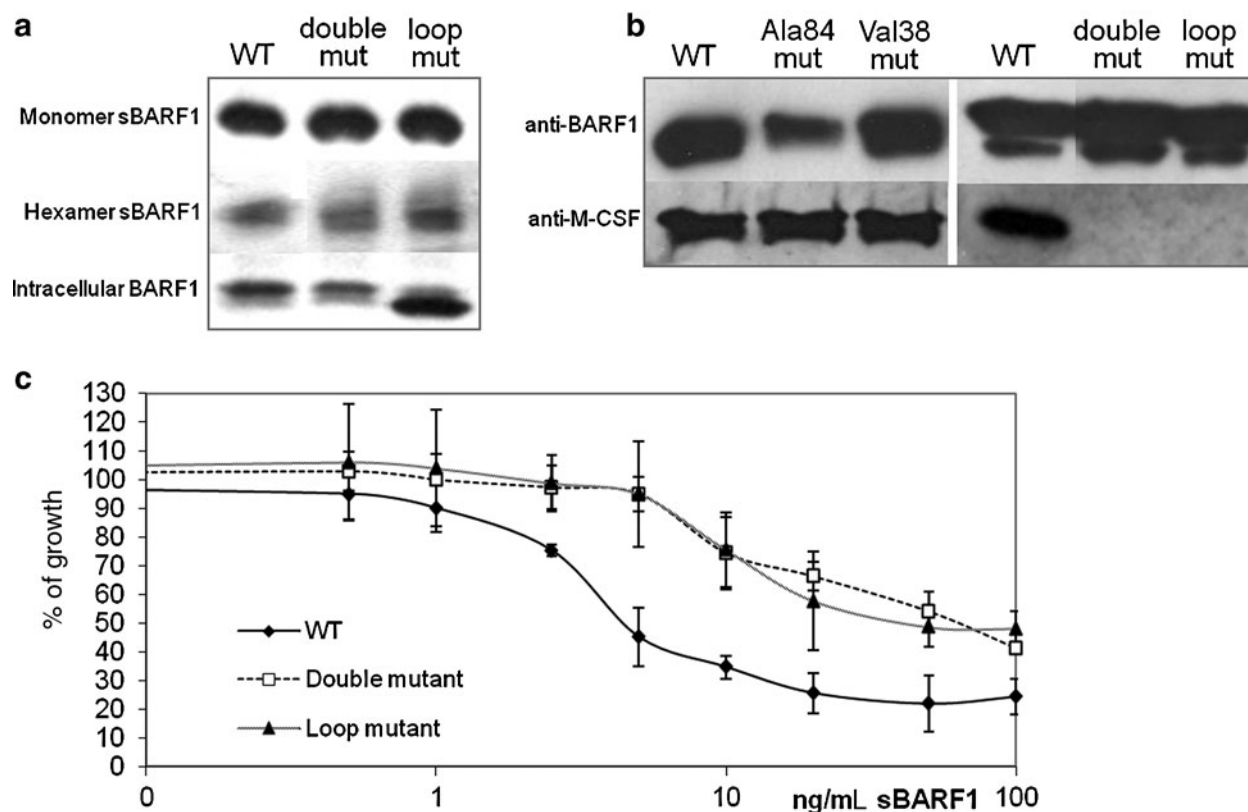
responsible for M-CSF binding. M-CSF is a disulfide-linked dimer with each monomer consisting of a four-alpha-helix bundle and an anti-parallel beta sheet (38). The M-CSF receptor binds the M-CSF dimer at its alpha-helix flat face, but the affinity is weak. Upon binding to the receptor, the M-CSF dimer undergoes conformational changes, resulting in dimerization and activation of the receptor (4). Crystallization results of the sBARF1/M-CSF complex (unpublished data) indicated that in contrast to the M-CSF receptor, the BARF1 hexamer binds the M-CSF dimer at the beta sheets, with Val38 and Ala84, located in two protruding N-terminal loops, as the main interacting residues on sBARF1. To confirm these findings, Val38Glu and Ala84Glu single mutants, a double mutant, and a mutant in which the loop residues 37–40 were mutated to glycine, were generated. The double mutant and the loop mutant were secreted as hexamers in the culture medium of transfected cells (Fig. 2a). The intracellular loop mutant resulted in relatively less glycosylated BARF1, possibly relating to folding difficulties during intracellular trafficking of the translated product. The single mutants were able to bind M-CSF, but both the double and the loop mutant were disabled in M-CSF bind-

ing (Fig. 2b), and showed reduced inhibition of M-CSF-dependent growth of MUTZ-3 cells compared to wild-type (WT) BARF1 (Fig. 2c).

#### *M-CSF receptor downstream signaling is inhibited by sBARF1*

The effect of sBARF1 in the M-CSF receptor downstream signaling pathway, involving tyrosine kinases PI3-K and STAT (14,15,34), was evaluated. Five minutes after exposing serum-starved MUTZ-3 cells to M-CSF, phosphorylated (active) M-CSF receptor, Akt, and MAPK were detected (Fig. 3a). Pre-incubating M-CSF with sBARF1 prevented this activation of the M-CSF-receptor signaling pathway, whereas pre-incubation of sBARF1 with a neutralizing antibody restored the signaling through the M-CSF receptor (Fig. 3a). Since macrophages differentiate in the presence of M-CSF and express the M-CSF receptor, downstream signaling was also evaluated in serum-starved Mo $\Phi$ . Short-term M-CSF exposure increased MAPK phosphorylation, whereas pre-incubation of M-CSF with sBARF1 reduced this MAPK phosphorylation (Fig. 3b). Thus kinase pathways, activated





**FIG. 2.** Site-directed mutants of sBARF1 reveal the M-CSF binding site. (a) BARF1 mutants were secreted as hexameric glycosylated proteins in culture medium. Intracellular loop mutant BARF1 displayed a lower band corresponding to deglycosylation, probably due to folding problems, retaining it longer in the Golgi body. (b) Immunoprecipitations with M-CSF, using linked anti-sBARF1 beads, were performed with WT sBARF1, single mutant Ala84 (Ala84 mut), single mutant Val38 (Val38 mut), double mutant (double mut), and loop mutant sBARF1 (loop mut). M-CSF was not precipitated with the sBARF1 M-CSF double and loop binding site mutants. (c) MUTZ-3 cells were cultured for 3 d in the presence of 10 ng/mL M-CSF that was pre-incubated for 1 h with a range of sBARF1 concentrations. Growth was determined using the MTT proliferation test (WT, wild-type sBARF1; double mutant, Val38/Ala84 to Glu; loop mutant, loop aa37–40 to Gly).

by M-CSF binding to its receptor, were negatively modulated when M-CSF was scavenged by sBARF1.

#### *Native sBARF1 negatively influences cell morphology and viability during macrophage differentiation*

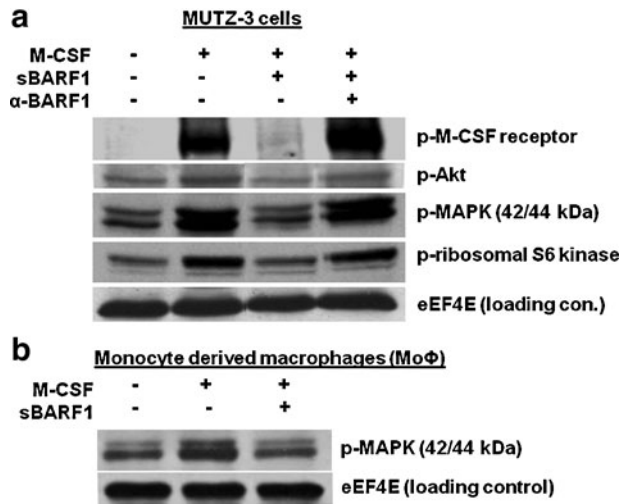
M-CSF receptor (*c-fms*) is expressed on both macrophages and DCs (45,46) and their precursors (11,37). The importance of M-CSF in DC differentiation is reflected by M-CSF-deficient mice, which have a two- to threefold reduction in splenic DCs (28). Since M-CSF is essential for macrophage differentiation (14,40), the effect of sBARF1 on this process was evaluated using CD14<sup>+</sup> monocytes from healthy donors. Differentiated MoΦ were characterized by enlarged cytoplasm and irregular plasma membranes with pseudopodia. After 5 d of differentiation in the presence of M-CSF, MoΦ showed the typical morphology of differentiated macrophages. In contrast, sBARF1-treated MoΦ remained small in size with a rounded morphology. Moreover, the addition of sBARF1 resulted in lower viability in the cultures, as indicated by non-adherent dead cells that were washed away by the Giemsa staining (Fig. 4a).

To substantiate the observation that sBARF1 negatively influenced macrophage differentiation and induced cell death, a viability test was performed, with a read-out based

on mitochondrial activity (i.e., MTT test). In this regard it is important to note that MoΦ acquire higher mitochondrial activity during differentiation (33). The definition of viability in these assays is both an increase in cell numbers and in the level of differentiation. When viability of M-CSF-treated MoΦ cultured in the absence of sBARF1 measured at day 6 was set at 100%, cells treated with sBARF1 showed a significant reduction in viability compared to normal differentiated cells ( $p=0.03$ ; Fig. 4b). This effect was dose-dependent, and the sBARF1-induced reduction of viability occurred at 20 ng/mL and higher (Fig. 4c), and could be detected as early as day 3 of differentiation (Fig. 4d). Compared to the untreated control group, for which the viability increased upon differentiation, the viability of the sBARF1-treated cells decreased, suggesting cell death (Fig. 4d), which is in accord with our initial microscope observations (Fig. 4a).

#### *Effects of sBARF1 on macrophage surface marker expression*

To further evaluate the effect of sBARF1 treatment on macrophage differentiation, sBARF1-treated and sBARF1-untreated MoΦ were harvested on days 5–7 with EDTA and stained for key macrophage markers (i.e., CD11b, CD11c, CD14, CD16, CD36, CD64, CD169, and HLA-DR). Only adherent cells were



**FIG. 3.** M-CSF receptor downstream signaling is inhibited by sBARF1. **(a)** Serum-starved MUTZ-3 cells were incubated for 5 min with 10 ng/mL M-CSF pre-incubated with or without 60 ng/mL sBARF1. M-CSF receptor (downstream) signaling was evaluated using phospho-specific antibodies. sBARF1 was able to prevent phosphorylation of the M-CSF receptor and subsequent downstream signaling. Pre-incubation of sBARF1 with specific antibodies was able to oppose this effect. **(b)** Monocytes were differentiated for 5 days with 10 ng/mL M-CSF, serum starved for 4 h, and incubated for 5 min with 10 ng/mL M-CSF pre-incubated with or without sBARF1. Antibodies specific to phosphorylated MAPK were used to evaluate downstream receptor activation.

harvested, and only viable MoΦ were selected for flow cytometric analysis. sBARF1-cultured MoΦ showed a significantly reduced level of expression of CD14, a pattern recognition co-receptor for bacterial lipopolysaccharide, and CD11b, a integrin subunit of macrophage-antigen 1 involved in adherence. Purified sBARF1 also suppressed the expression of the FcγR CD16 and CD169, a macrophage differentiation-specific marker (Fig. 4e), HLA-DR, CD11c, CD64, and CD36, were unaffected (data not shown). These findings indicate that sBARF1 influences the differentiation of macrophages.

#### *Impairment of oxygen radical production by sBARF1-treated macrophages*

MoΦ are responsible for several different effector functions of the immune system against pathogens, which can be triggered by the TLR4 ligand LPS. Upon activation, MoΦ respond by the generation of free oxygen radicals to kill bacteria that are engulfed by phagocytosis. Oxygen radicals can be visualized by NBT, which is converted into blue crystals when oxidized. MoΦ were incubated with NBT together with 1 μg/mL LPS after being pre-sensitized with IFN-γ. The sBARF1-treated MoΦ were significantly less capable of converting NBT than normally-differentiated macrophages ( $p=0.01$ ; Fig. 5a).

#### *sBARF1 specifically affects the phagocytosis of apoptotic cells*

Macrophages are known for their ability to capture and internalize particles, including pathogens, necrotic cells, ap-

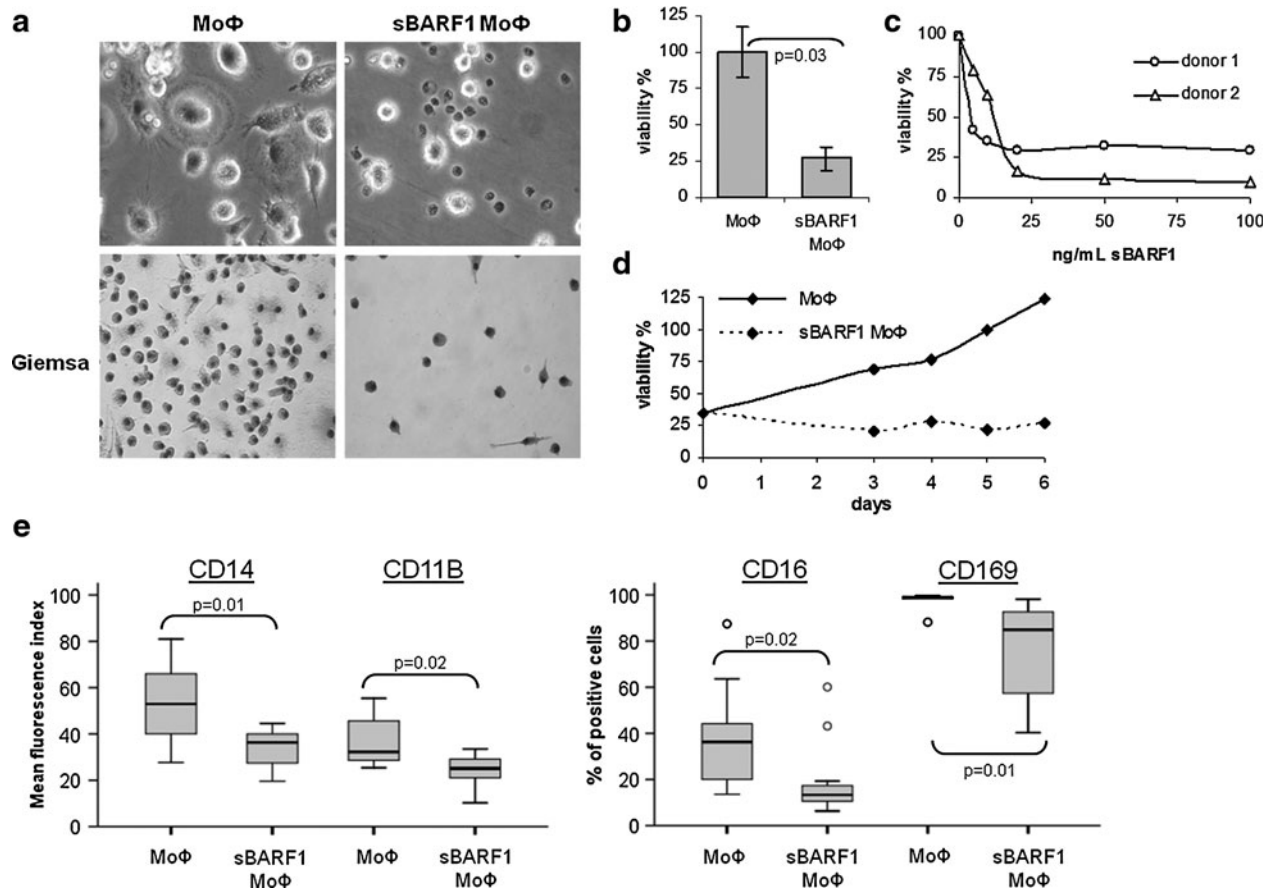
optotic cells, and immune complexes (1). Non-specific phagocytosis was evaluated with fluorescent microbeads, and no difference between MoΦ cultured in the presence or the absence of sBARF1 was found (data not shown). To evaluate phagocytosis of apoptotic cells, PKH67-dyed Jurkat cells were lethally irradiated and added in excess to MoΦ. After incubation, the remaining Jurkat cells were washed away. Macrophages generated from three separate donors were fixed and stained with rhodamine-phalloidin to visualize actin filaments involved in phagocytosis and analyzed by confocal microscopy. In the presence of sBARF1, MoΦ phagocytosed fewer apoptotic Jurkat cells than control MoΦ (Fig. 5b), revealing a functional impairment.

## Discussion

EBV, like many other persistent herpes viruses, has acquired numerous mechanisms aimed at subverting or evading immune surveillance. The secreted hexameric sBARF1 protein is produced by EBV-related carcinomas (51), and is expressed during lytic cycle replication of the virus in both epithelial and lymphoid cell types (59). Since sBARF1 has structural homology with growth factor receptors (52), it might function by scavenging cytokines as an evasion mechanism by which EBV-infected cells modulate local immune functions, especially those involving the myeloid lineage, to avoid immune-mediated eradication (6).

Prior investigations showing the inhibitory effects of BARF1 on myeloid cells were performed with Fc-tagged BARF1 (36,52). Subsequent studies showed that BARF1 in human epithelial cells is secreted as a hexameric molecule (18,54,56). The 3D-folding of the hexameric BARF1 molecule may be disturbed by the additional Fc-tag. Therefore the use of a native hexameric protein is preferred. This study showed that hexameric native sBARF1 could bind M-CSF in a direct and functionally inhibitory manner. sBARF1 binding prevented M-CSF-stimulated growth of the growth factor-dependent myeloid cell line MUTZ-3 in a linear fashion, but had no effect on GM-CSF-induced proliferation, confirming its specificity for M-CSF. Molecularly, one sBARF1 hexamer can block the activity of three M-CSF dimers, a result in agreement with the findings of Tarbouriech *et al.* (53). These results led us to investigate which domain at the surface of sBARF1 was responsible for M-CSF inhibition. Mutational analysis confirmed the specific interaction of sBARF1 and M-CSF, as predicted by molecular modeling based on the M-CSF/sBARF1 co-crystal structure (53). Mutants of the predicted sBARF1/M-CSF interaction sites showed that the N-terminal Val38 and Ala84 residues, located in protruding loops, are essential for M-CSF binding. sBARF1 binds M-CSF at the beta sheets, and not at the alpha helices like the M-CSF receptor (4). Since the M-CSF receptor interaction is dependent on conformational changes in the M-CSF dimer, the mechanism by which sBARF1 prevents M-CSF receptor activation might be interference with this conformational change.

M-CSF can drive mononuclear phagocyte differentiation (5,20,28,35,40), but when blocked by sBARF1, this function was inhibited. Several macrophage-related markers were negatively influenced by sBARF1, including CD14, CD11b, CD16, and CD163. In addition, sBARF1-treated MoΦ were less capable of producing free oxygen radicals upon



**FIG. 4.** Native sBARF1 negatively influences macrophage morphology and viability during differentiation. Monocytes were differentiated for 6 d with 10 ng/mL M-CSF with or without 200 ng/mL sBARF1. (a) Differentiated live MoΦ were widespread adherent cells with a large amount of cytoplasm and pseudopodia (top left). sBARF1-treated MoΦ were less adherent, and had a more monocyte-like phenotype with less cytoplasm compared to the untreated cells (top right). Small particles, which were not seen in the untreated MoΦ, were dead cells. Differentiated macrophages, fixed and stained with Giemsa (200 $\times$ ), are shown in the lower panels. (b) The MTT proliferation test was used to assess both increased cell numbers and level of differentiation, for which the term “viability” is used. Cell viability decreases with treatment with sBARF1 ( $n=6$ ,  $p=0.03$ ). (c) Monocytes were differentiated for 6 d with a range of concentrations of sBARF1. The effect of sBARF1 can clearly be seen with a concentration of 20 ng/mL sBARF1. (d) Shown is MTT testing at several time points during the differentiation of monocytes from one representative donor. The inhibitory effect of 20 ng/mL sBARF1 on the macrophages can be seen from day 3. The untreated cells showed increased viability, whereas the viability of sBARF1-treated macrophages remained the same over time. (e) Monocytes from 8 donors were differentiated for 5 d with 10 ng/mL M-CSF with or without 200 ng/mL sBARF1. Downregulation of surface markers CD14, CD11b, CD16, and CD169 was significant.

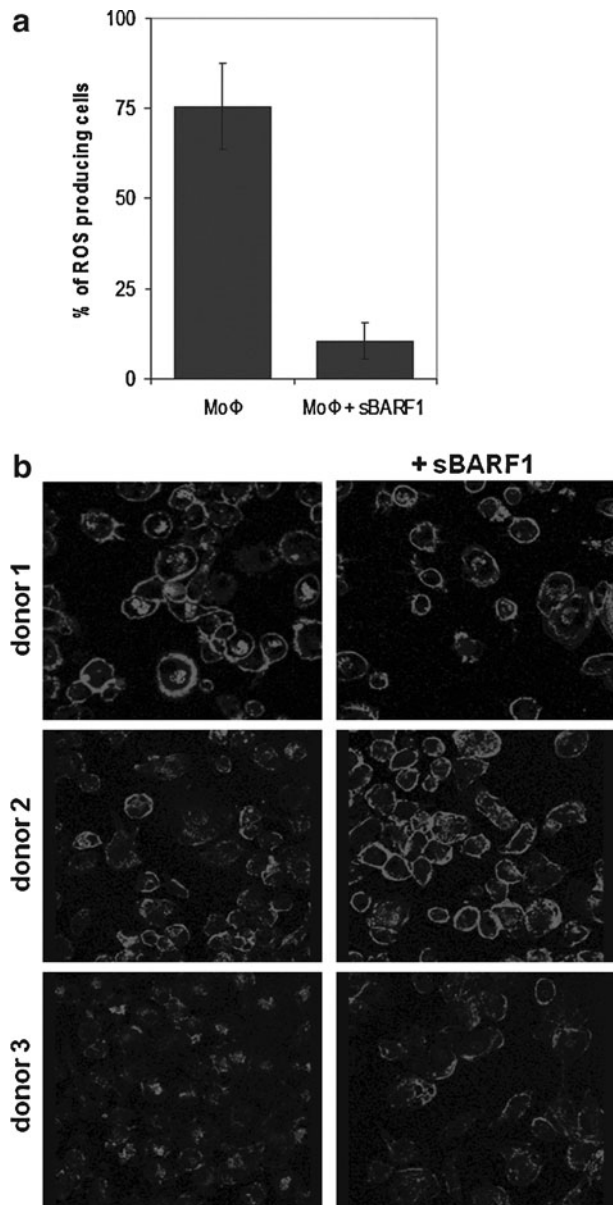
stimulation, confirming that sBARF1-treated MoΦ were compromised in their anti-inflammatory reaction. Phagocytosis of apoptotic cells was also reduced in MoΦ treated with sBARF1. Moreover, downregulation of CD16, a Fc-receptor, is likely to negatively influence the phagocytosis of antibody-antigen complexes. All of these features are characteristic for the suppression of M2 differentiation.

Mononuclear phagocytes are exposed during their differentiation and migration to combinations of growth factors such as M-CSF, GM-CSF, IL-4, IL-34, IFN- $\gamma$ , and Flt3L, each of which can contribute to their cellular phenotype (20). M-CSF is a pleiotropic growth factor with many roles in the immune system, some of which remain unknown. M-CSF is an important factor in the regulation of viability, proliferation, and differentiation of mononuclear phagocytes from monocytes to macrophages, but it also affects Langerhans cells and DCs (5,11,20,35,37,40,48). The growth factor GM-

CSF skews monocytes towards M1 macrophages, and monocytes that continue to be exposed to M-CSF become M2 macrophages (40). M1 macrophages, also called inflammatory macrophages, are considered more inflammatory and are associated with type 1 cell-mediated immunity; they produce reactive oxygen species and are considered to have anti-tumor activity. M2 macrophages, also called resident macrophages, are important for phagocytosis and are the first line of antiviral defense. The inhibition of M-CSF by sBARF1 expressed during lytic replication might allow monocytes/macrophages to act as a virus transmission vehicle of internalized or bound virus, as opposed to inactivation of the virus (13,55).

Most tumor-associated macrophages (TAMs) are considered to be of the M2 type, and may even harbor tumor growth-promoting abilities. The proper differentiation of professional antigen-presenting DCs, considered to have





**FIG. 5.** Native sBARF1 negatively influences macrophage activation and function. Monocytes were differentiated for 5 days with 10 ng/mL M-CSF with or without 200 ng/mL sBARF1. (a) After presensitization with human IFN- $\gamma$  for 2 h, LPS and NBT were added. The percentage of blue (activated) cells was visually scored ( $n=2$ ). (b) Mo $\Phi$  were incubated with fluorescently dyed apoptotic cells for 1 h and visualized using rhodamine-phalloidin. Photos were made using a Leica confocal microscope.

strong potential anti-tumor activity, is also dependent on M-CSF, which has been shown in recent studies with M-CSF (receptor)-deficient mice (28).

The results presented here indicate that sBARF1 interferes with M-CSF, but not with GM-CSF action. BAF1 could thus selectively impair M2 TAMs in their development and function. This may appear counter-intuitive in terms of tumor immune escape, but TAMs do not only promote tumor growth by secreting growth factors and promoting angiogenesis (41); they can also serve as negative mediators of

tumor growth by mediating anti-tumor cytotoxicity and antigen presentation (25). Since TAM density is positively correlated with the prognosis of NPC (12,39), blocking of M-CSF by sBARF1 might constitute a possible mechanism by which macrophage-mediated anti-tumor immunity is evaded.

Fc-tagged BAF1 can bind all three M-CSF isoforms, including cell surface M-CSF (52). Cell surface M-CSF on tumor cells evokes anti-tumor activity of macrophages in multiple tumor types, both innately and by linking to the adaptive arm of the immune system by antigen presentation to T cells (8,17,57). Since it is unknown whether NPC tumor cells express M-CSF, we can only speculate that BAF1 might have an effect on this level, interfering with macrophage-mediated anti-tumor immunity. Truncation of the rhBAF1 gene in a lymphocryptovirus rhesus macaque model resulted in lower efficiency of B-cell immortalization, possibly related to a loss of M-CSF inhibition (36). Future *in vivo* studies should be designed to explore the biological relevance of WT BAF1 in virus propagation and latency, and the effects of BAF1 modulation on myeloid cell function in the tumor area.

It is important to clarify the biological effects operating in the microenvironment of EBV-associated tumors to understand why these EBV-carrying carcinomas are not properly eliminated by the immune system. Our data reveal secreted BAF1 as a viral decoy receptor for M-CSF, functionally inhibiting M-CSF-dependent growth and activation of the M-CSF receptor pathway. Secreted BAF1 negatively influences mononuclear phagocyte differentiation, activation, and survival, which might contribute to EBV immune evasion. Therefore, the insights into the functional BAF1-M-CSF binding domains provided by this study could aid in the development of a small-molecule or antibody-based therapy to block this myelosuppressive function of sBARF1, thus allowing more effective immune therapy.

#### Acknowledgments

The authors are grateful to J.J. Lindenberg for technical and scientific assistance. This project was financially supported by the Dutch Cancer Society Project KWF-VU2007-3776.

#### Author Disclosure Statement

No competing financial interests exist.

#### References

1. Aderem A, and Underhill DM: Mechanisms of phagocytosis in macrophages. *Annu Rev Immunol* 1999;17:593–623.
2. Brooks L, Yao QY, Rickinson AB, and Young LS: Epstein-Barr virus latent gene transcription in nasopharyngeal carcinoma cells: coexpression of EBNA1, LMP1, and LMP2 transcripts. *J Virol* 1992;66:2689–2697.
3. Chang ET and Adami HO: The enigmatic epidemiology of nasopharyngeal carcinoma. *Cancer Epidemiol Biomarkers Prev* 2006;15:1765–1777.
4. Chen X, Liu H, Focia PJ, Shim AH, and He X: Structure of macrophage colony stimulating factor bound to FMS: diverse signaling assemblies of class III receptor tyrosine kinases. *Proc Natl Acad Sci USA* 2008;105:18267–18272.
5. Chitu V and Stanley ER: Colony-stimulating factor-1 in immunity and inflammation. *Curr Opin Immunol* 2006;18:39–48.



6. Cohen JI and Lekstrom K: Epstein-Barr virus BARF1 protein is dispensable for B-cell transformation and inhibits alpha interferon secretion from mononuclear cells. *J Virol* 1999; 73:7627–7632.
7. Daiter E, Pampfer S, Yeung YG, Barad D, Stanley ER, and Pollard JW: Expression of colony-stimulating factor-1 in the human uterus and placenta. *J Clin Endocrinol Metab* 1992; 74:850–858.
8. Dan Q, Sanchez R, Delgado C, *et al.*: Non-immunogenic murine hepatocellular carcinoma Hepa1-6 cells expressing the membrane form of macrophage colony stimulating factor are rejected *in vivo* and lead to CD8<sup>+</sup> T-cell immunity against the parental tumor. *Mol Ther* 2001;4:427–437.
9. Decaussin G, Sbih-Lammali F, de Turenne-Tessier M, Bouguermouh A, and Ooka T: Expression of BARF1 gene encoded by Epstein-Barr virus in nasopharyngeal carcinoma biopsies. *Cancer Res* 2000;60:5584–5588.
10. Fahraeus R, Fu HL, Ernberg I, *et al.*: Expression of Epstein-Barr virus-encoded proteins in nasopharyngeal carcinoma. *Int J Cancer* 1988;42:329–338.
11. Fogg DK, Sibon C, Miled C, *et al.*: A clonogenic bone marrow progenitor specific for macrophages and dendritic cells. *Science* 2006;311:83–87.
12. Gallo O, Bianchi S, Giannini A, Gallina E, Libonati GA, and Fini-Storchi O: Correlations between histopathological and biological findings in nasopharyngeal carcinoma and its prognostic significance. *Laryngoscope* 1991;101:487–493.
13. Guerreiro-Cacais AO, Li L, Donati D, *et al.*: Capacity of Epstein-Barr virus to infect monocytes and inhibit their development into dendritic cells is affected by the cell type supporting virus replication. *J Gen Virol* 2004;85:2767–2778.
14. Hamilton JA: CSF-1 and cell cycle control in macrophages. *Mol Reprod Dev* 1997;46:19–23.
15. Hamilton JA: CSF-1 signal transduction. *J Leukoc Biol* 1997;62:145–155.
16. Hausen zur A, Brink AA, Craanen ME, Middeldorp JM, Meijer CJ, and van den Brule AJ: Unique transcription pattern of Epstein-Barr virus (EBV) in EBV-carrying gastric adenocarcinomas: expression of the transforming BARF1 gene. *Cancer Res* 2000;60:2745–2748.
17. Hoa N, Myers MP, Douglass TG, *et al.*: Molecular mechanisms of paraptosis induction: implications for a non-genetically modified tumor vaccine. *PLoS One* 2009;4:e4631.
18. Hoebe EK, Hutajulu SH, van Beek J, *et al.*: Purified hexameric Epstein-Barr virus-encoded BARF1 protein for measuring anti-BARF1 antibody responses in nasopharyngeal carcinoma patients. *Clin Vaccine Immunol* 2011;18:298–304.
19. Houali K, Wang X, Shimizu Y, *et al.*: A new diagnostic marker for secreted Epstein-Barr virus encoded LMP1 and BARF1 oncoproteins in the serum and saliva of patients with nasopharyngeal carcinoma. *Clin Cancer Res* 2007;13:4993–5000.
20. Hume DA: Macrophages as APC and the dendritic cell myth. *J Immunol* 2008;181:5829–5835.
21. Hutajulu SH, Hoebe EK, Verkuijlen SA, *et al.*: Conserved mutation of Epstein-Barr virus-encoded BamHI-A Rightward Frame-1 (BARF1) gene in Indonesian nasopharyngeal carcinoma. *Infect Agent Cancer* 2010;5:16.
22. Janowska-Wieczorek A, Belch AR, Jacobs A, *et al.*: Increased circulating colony-stimulating factor-1 in patients with pre-leukemia, leukemia, and lymphoid malignancies. *Blood* 1991;77:1796–1803.
23. Jayasurya A, Bay BH, Yap WM, and Tan NG: Lymphocytic infiltration in undifferentiated nasopharyngeal cancer. *Arch Otolaryngol Head Neck Surg* 2000;126:1329–1332.
24. Klein G, Giovanella BC, Lindahl T, Fialkow PJ, Singh S, and Stehlin JS: Direct evidence for the presence of Epstein-Barr virus DNA and nuclear antigen in malignant epithelial cells from patients with poorly differentiated carcinoma of the nasopharynx. *Proc Natl Acad Sci USA* 1974;71:4737–4741.
25. Lei H, Ju DW, Yu Y, *et al.*: Induction of potent antitumor response by vaccination with tumor lysate-pulsed macrophages engineered to secrete macrophage colony-stimulating factor and interferon-gamma. *Gene Ther* 2000;7:707–713.
26. Li J, Zeng XH, Mo HY, *et al.*: Functional inactivation of EBV-specific T-lymphocytes in nasopharyngeal carcinoma: implications for tumor immunotherapy. *PLoS One* 2007; 2:e1122.
27. Luo B, Wang Y, Wang XF, *et al.*: Expression of Epstein-Barr virus genes in EBV-associated gastric carcinomas. *World J Gastroenterol* 2005;11:629–633.
28. MacDonald KP, Rowe V, Bofinger HM, *et al.*: The colony-stimulating factor 1 receptor is expressed on dendritic cells during differentiation and regulates their expansion. *J Immunol* 2005;175:1399–1405.
29. Martorelli D, Houali K, Caggiari L, *et al.*: Spontaneous T cell responses to Epstein-Barr virus-encoded BARF1 protein and derived peptides in patients with nasopharyngeal carcinoma: bases for improved immunotherapy. *Int J Cancer* 2008; 123:1100–1107.
30. Martorelli D, Muraro E, Merlo A, *et al.*: Exploiting the interplay between innate and adaptive immunity to improve immunotherapeutic strategies for Epstein-Barr-virus-driven disorders. *Clin Dev Immunol* 2012;2012:931–952.
31. Masterson AJ, Sombroek CC, de Gruijl TD, *et al.*: MUTZ-3, a human cell line model for the cytokine-induced differentiation of dendritic cells from CD34<sup>+</sup> precursors. *Blood* 2002; 100:701–703.
32. Middeldorp JM, Brink AA, van den Brule AJ, and Meijer CJ: Pathogenic roles for Epstein-Barr virus (EBV) gene products in EBV-associated proliferative disorders. *Crit Rev Oncol Hematol* 2003;45:1–36.
33. Nichols BA, Bainton DF, and Farquhar MG: Differentiation of monocytes. Origin, nature, and fate of their azurophil granules. *J Cell Biol* 1971;50:498–515.
34. Novak U, Nice E, Hamilton JA, and Paradiso L: Requirement for Y706 of the murine (or Y708 of the human) CSF-1 receptor for STAT1 activation in response to CSF-1. *Oncogene* 1996;13:2607–2613.
35. O'Keefe M, Fancke B, and Hochrein H: The generation of plasmacytoid and conventional dendritic cells with M-CSF. *Methods Mol Biol* 2010;595:187–193.
36. Ohashi M, Orlova N, Quink C, and Wang F: Cloning of the Epstein-Barr virus-related rhesus lymphocryptovirus as a bacterial artificial chromosome: a loss-of-function mutation of the rhBARF1 immune evasion gene. *J Virol* 2011;85: 1330–1339.
37. Onai N, Obata-Onai A, Schmid MA, Ohteki T, Jarrossay D, and Manz MG: Identification of clonogenic common Flt3<sup>+</sup> M-CSFR<sup>+</sup> plasmacytoid and conventional dendritic cell progenitors in mouse bone marrow. *Nat Immunol* 2007;8: 1207–1216.
38. Pandit J, Bohm A, Jancarik J, Halenbeck R, Koths K, and Kim SH: Three-dimensional structure of dimeric human recombinant macrophage colony-stimulating factor. *Science* 1992; 258:1358–1362.
39. Peng J, Ding T, Zheng LM, and Shao JY: [Influence of tumor-associated macrophages on progression and prognosis of nasopharyngeal carcinoma]. *Ai Zhong* 2006;25:1340–1345.

40. Pixley FJ and Stanley ER: CSF-1 regulation of the wandering macrophage: complexity in action. *Trends Cell Biol* 2004;14:628–638.
41. Pollard JW: Tumour-educated macrophages promote tumour progression and metastasis. *Nat Rev Cancer* 2004;4:71–78.
42. Raab-Traub N: Epstein-Barr virus in the pathogenesis of NPC. *Semin Cancer Biol* 2002;12:431–441.
43. Santegoets SJ, Masterson AJ, van der Sluis PC, *et al.*: A CD34(+) human cell line model of myeloid dendritic cell differentiation: evidence for a CD14(+)CD11b(+) Langerhans cell precursor. *J Leukoc Biol* 2006;80:1337–1344.
44. Santegoets SJ, Schreurs MW, Masterson AJ, *et al.*: *In vitro* priming of tumor-specific cytotoxic T lymphocytes using allogeneic dendritic cells derived from the human MUTZ-3 cell line. *Cancer Immunol Immunother* 2006;55:1480–1490.
45. Sasmono RT, Ehrnsperger A, Cronau SL, *et al.*: Mouse neutrophilic granulocytes express mRNA encoding the macrophage colony-stimulating factor receptor (CSF-1R) as well as many other macrophage-specific transcripts and can transdifferentiate into macrophages *in vitro* in response to CSF-1. *J Leukoc Biol* 2007;82:111–123.
46. Sasmono RT, Oceandy D, Pollard JW, *et al.*: A macrophage colony-stimulating factor receptor-green fluorescent protein transgene is expressed throughout the mononuclear phagocyte system of the mouse. *Blood* 2003;101:1155–1163.
47. Savard M and Gosselin J: Epstein-Barr virus immunosuppression of innate immunity mediated by phagocytes. *Virus Res* 2006;119:134–145.
48. Schmid MA, Kingston D, Boddupalli S, and Manz MG: Instructive cytokine signals in dendritic cell lineage commitment. *Immunol Rev* 2010;234:32–44.
49. Scholl SM, Lidereau R, de la Rochefordiere RA, *et al.*: Circulating levels of the macrophage colony stimulating factor CSF-1 in primary and metastatic breast cancer patients. A pilot study. *Breast Cancer Res Treat* 1996;39:275–283.
50. Seto E, Yang L, Middeldorp J, *et al.*: Epstein-Barr virus (EBV)-encoded BARTF1 gene is expressed in nasopharyngeal carcinoma and EBV-associated gastric carcinoma tissues in the absence of lytic gene expression. *J Med Virol* 2005;76:82–88.
51. Stevens SJ, Verkuijlen SA, Hariwiyanto B, *et al.*: Noninvasive diagnosis of nasopharyngeal carcinoma: nasopharyngeal brushings reveal high Epstein-Barr virus DNA load and carcinoma-specific viral BARTF1 mRNA. *Int J Cancer* 2006;119:608–614.
52. Strockbine LD, Cohen JI, Farrah T, *et al.*: The Epstein-Barr virus BARTF1 gene encodes a novel, soluble colony-stimulating factor-1 receptor. *J Virol* 1998;72:4015–4021.
53. Tarbouriech N, Ooka T, and Burmeister WP: Molecular determinants of the BARTF1-HCSF1 interaction. *EBV Conference* 2008;1027.
54. Tarbouriech N, Ruggiero F, de Turenne-Tessier M, Ooka T, and Burmeister WP: Structure of the Epstein-Barr virus oncogene BARTF1. *J Mol Biol* 2006;359:667–678.
55. Tugizov S, Herrera R, Velupillai P, Greenspan J, Greenspan D, and Palefsky JM: Epstein-Barr virus (EBV)-infected monocytes facilitate dissemination of EBV within the oral mucosal epithelium. *J Virol* 2007;81:5484–5496.
56. Turenne-Tessier de M and Ooka T: Post-translational modifications of Epstein Barr virus BARTF1 oncogene-encoded polypeptide. *J Gen Virol* 2007;88:2656–2661.
57. Williams CC, Trinh H, Tran TV, *et al.*: Membrane macrophage colony-stimulating factor on MADB106 breast cancer cells does not activate cytotoxic macrophages but immunizes rats against breast cancer. *Mol Ther* 2001;3:216–224.
58. Young LS and Rickinson AB: Epstein-Barr virus: 40 years on. *Nat Rev Cancer* 2004;4:757–768.
59. Zhang CX, Decaussin G, Daillie J, and Ooka T: Altered expression of two Epstein-Barr virus early genes localized in BamHI-A in nonproducer Raji cells. *J Virol* 1988;62:1862–1869.

Address correspondence to:

A.E. Greijer  
 Department of Pathology  
 VU University Medical Center  
 De Boelelaan 1117  
 1081 HV Amsterdam  
 The Netherlands

E-mail: ae.greijer@vumc.nl

Received March 29, 2012; accepted August 13, 2012.