

Contents lists available at [ScienceDirect](http://www.sciencedirect.com)

Journal of Functional Foods

journal homepage: www.elsevier.com/locate/jff

Corrigendum to “The ameliorating effect of *Filipendula hexapetala* extracts on hepatorenal toxicity of cisplatin” [J. Funct. Foods 18(A) (2015) 198–212]



Jelena Katanić^{a,*}, Vladimir Mihailović^a, Sanja Matić^b, Vesna Stanković^c, Nevena Stanković^a, Tatjana Boroja^a, Milan Mladenović^a, Snežana Stanić^b, Samo Kreft^d, Mirjana Mihailović^e

^a Department of Chemistry, Faculty of Science, University of Kragujevac, Radoja Domanovića 12, 34000 Kragujevac, Serbia

^b Department of Biology and Ecology, Faculty of Science, University of Kragujevac, Radoja Domanovića 12, 34000 Kragujevac, Serbia

^c Institute of Pathology, Faculty of Medicine, University of Kragujevac, Svetozara Markovića 69, 34000 Kragujevac, Serbia

^d Department of Pharmaceutical Biology, Faculty of Pharmacy, University of Ljubljana, Aškerčeva cesta 7, Ljubljana SI-1000, Slovenia

^e Institute for Biological Research “Siniša Stanković”, University of Belgrade, Bulevar despota Stefana 142, 11060 Belgrade, Serbia

The authors regret that in Fig. 3 inadvertently was incorporated two photographs of the same tissue preparation of group VII (Fig. 3VII and X). They would like to inform that this wrong figure did not change the results of their study. The accurate representa-

tive photograph of kidney sections of experimental animals from group X (Fig. 3X in Fig. 3) is given below.

The authors would like to apologize for any inconvenience caused.

DOI of original article: <http://dx.doi.org/10.1016/j.jff.2015.07.004>

* Corresponding author. Department of Chemistry, Faculty of Science, University of Kragujevac, Radoja Domanovića 12, 34000 Kragujevac, Serbia. Tel.: +381 34336223; fax: +381 34335040.

E-mail address: jkatanic@kg.ac.rs (J. Katanić).

<http://dx.doi.org/10.1016/j.jff.2016.11.017>

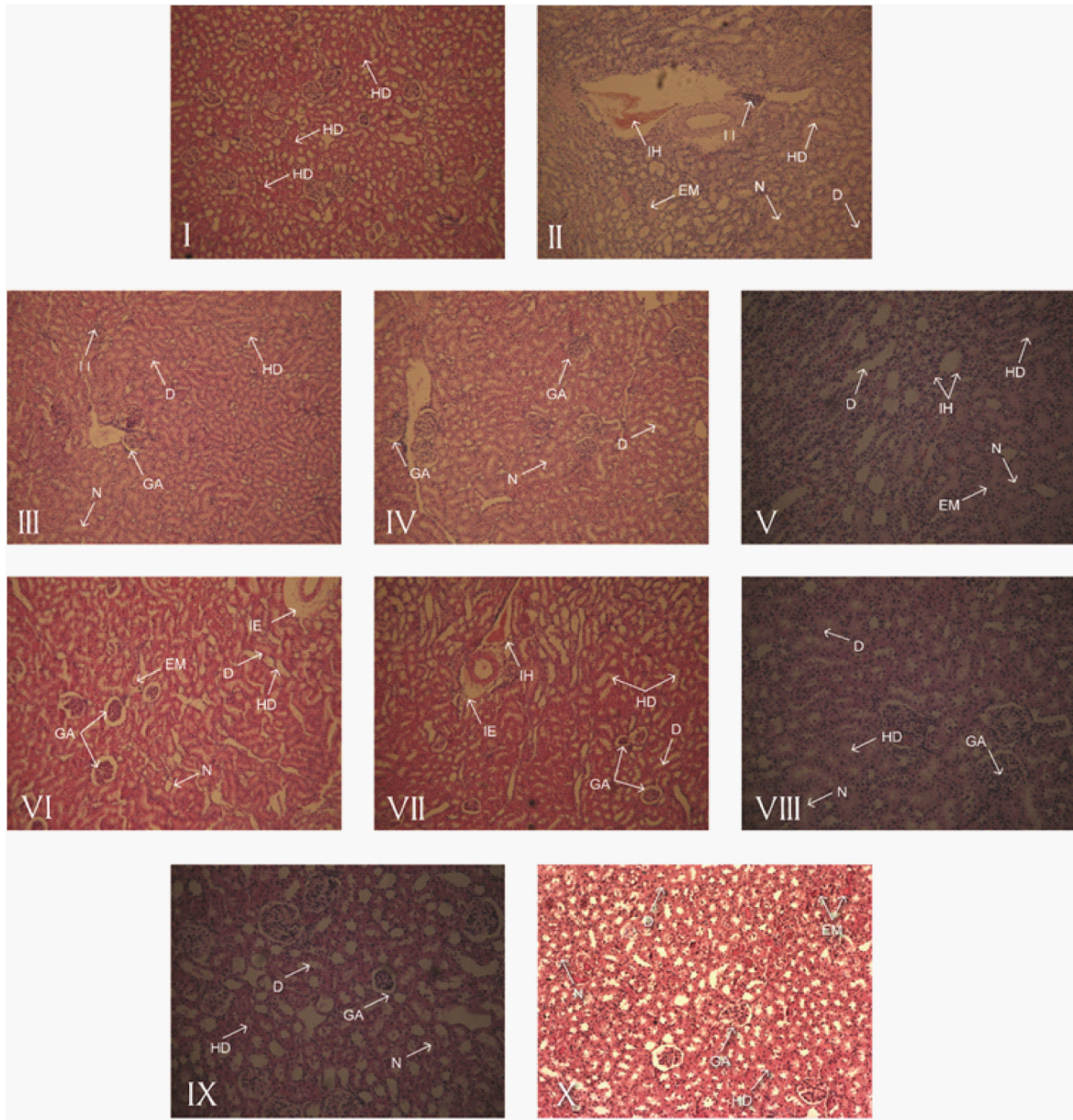


Fig. 3. Photomicrographs of kidney sections from: I – Control group; II – CP 7.5 mg/kg b.w., i.p.; III – FHA 100 mg/kg b.w. + CP; IV – FHA 200 mg/kg b.w. + CP; V – FHA 400 mg/kg b.w. + CP; VI – FHR 100 mg/kg b.w. + CP; VII – FHR 200 mg/kg b.w. + CP; VIII – FHR 400 mg/kg b.w. + CP; IX – FHA 400 mg/kg b.w.; X – FHR 400 mg/kg b.w. H & E, original magnification 40× or 100×. Arrow: HD – hydropic degeneration in tubular epithelium; GA – glomerular atrophy distension of capsular space; II – interstitial inflammatory infiltrate; N – necrosis of tubular epithelial cells; IE – interstitial edema; IH – interstitial hemorrhaging; D – desquamation of tubular epithelium; EM – eosinophilic materials in tubular lumen.