



# The Next Generation of NASA Rapid Response: Worldview Snapshots

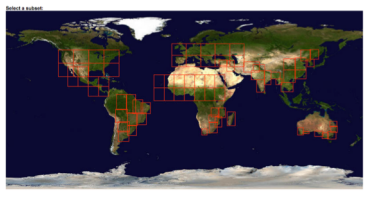
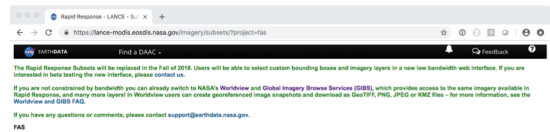
<https://wvs.earthdata.nasa.gov>

Mike McGann<sup>1</sup>, Ryan A. Boller<sup>2</sup>, Katie Baynes<sup>3</sup>, Natalie N Pressley<sup>1</sup>, Charles K Thompson<sup>4</sup>, Matthew F Cechini<sup>1</sup>, Diane Davies<sup>5</sup>, Jeffery E Schmaltz<sup>6</sup>, Min Minnie Wong<sup>1</sup>, Benjamin Adam King<sup>1</sup>, Zachary Rice<sup>2</sup>, Joe T Roberts<sup>4</sup>, Joshua Rodriguez<sup>4</sup>, Alexander P De Luca<sup>1</sup>, Jerome King<sup>1</sup>, Edward Plato<sup>2</sup> - <sup>1</sup> Science Systems and Applications, Inc.; <sup>2</sup> Arctic Slope Technical Services, Inc.; <sup>3</sup> NASA Goddard Space Flight Center; <sup>4</sup> - NASA Jet Propulsion Laboratory, California Institute of Technology; <sup>5</sup> - Trigg-Davies Consulting Ltd; <sup>6</sup> - Sigma Space Corporation

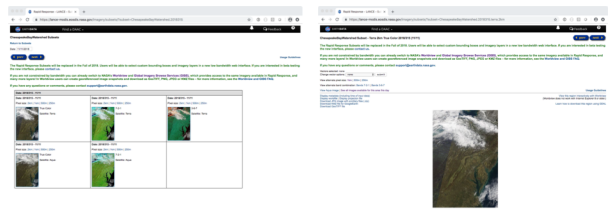
IN43D-0934

## About

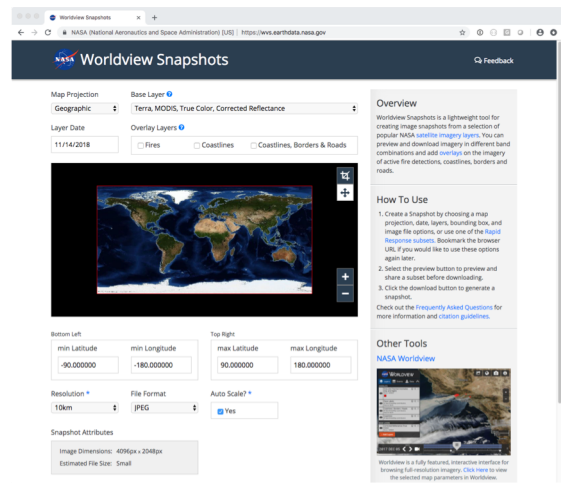
The NASA Rapid Response system started in 2001 by serving static subsets of Near Real Time MODIS (Moderate Resolution Imaging Spectroradiometer) imagery acquired from the Terra satellite. Over this time, Rapid Response has been used to support near real time applications such as wildfire and sea ice mapping for hundreds of thousands of users. In 2011, the toolset expanded to include GIBS, the Global Imagery Browse Services, which provides a web map tiling service of over 700 imagery products, and Worldview (https://worldview.earthdata.nasa.gov), an interactive web application that showcases the products available in GIBS. This year a new application, Worldview Snapshots, has been added to complete the toolset by providing a flexible, low bandwidth method to download personalized subsets for those who do not need or cannot use a fully featured web mapping application.



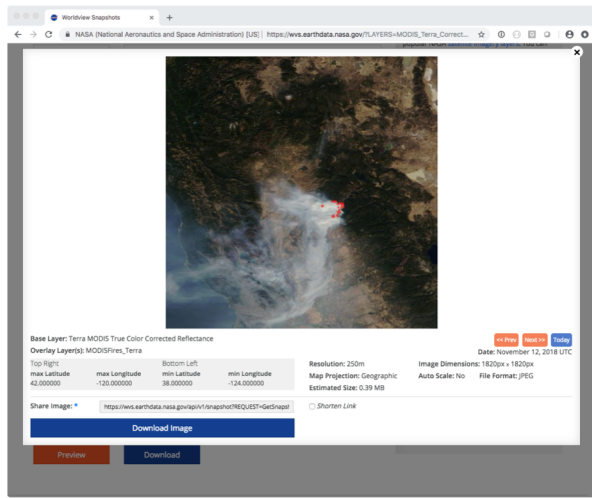
Above is the static subset selection page in the NASA Rapid Response application. Clicking on one of the red regions or a subset name takes you to the thumbnail page below on the left. Once a subset has been chosen, the download screen to the right is presented.



## Next Generation



Subset selection in the new Worldview Snapshots application is shown above. Customized subset regions are created using an interactive map and can be used again by bookmarking the generated URL. The subset can be immediately downloaded or previewed as shown in the page below.



## Features

- Subset selection using interactive map or coordinate entry
- Available layers provided by the Global Imagery Browse Service
  - MODIS, Terra
    - Corrected Reflectance, True Color
    - Corrected Reflectance, Bands 7-2-1
    - Corrected Reflectance, Bands 3-6-7
    - Fires and Thermal Anomalies
  - MODIS, Aqua
    - Corrected Reflectance, True Color
    - Corrected Reflectance Bands 7-2-1
    - Fires and Thermal Anomalies
  - VIIRS, Suomi NPP
    - Corrected Reflectance True Color
    - Corrected Reflectance, M11-I2-I1
    - Corrected Reflectance, M3-I3-M11
    - Day/Night Band, ENCC
    - Fires and Thermal Anomalies
- Download Formats
  - JPEG with optional Worldfile
  - PNG with optional Worldfile
  - GeoTIFF
  - KMZ
- Polar mosaics
- Resolutions from 250m per pixel to 10km per pixel
- Auto-scaling of image width by the cosine of the latitude
- Bookmarking of subset parameters
- Bookmarking to specific subset images or a link to today's or yesterday's daily image.
- Full archive of imagery available online

