

PDF hosted at the Radboud Repository of the Radboud University Nijmegen

The following full text is a publisher's version.

For additional information about this publication click this link.

<http://hdl.handle.net/2066/88578>

Please be advised that this information was generated on 2017-12-06 and may be subject to change.



REVIEW

Fat tissue, aging, and cellular senescence

Tamara Tchkonja,¹ Dean E. Morbeck,¹ Thomas von Zglinicki,² Jan van Deursen,¹ Joseph Lustgarten,¹ Heidi Scoble,¹ Sundeep Khosla,¹ Michael D. Jensen¹ and James L. Kirkland¹

¹Robert and Arlene Kogod Center on Aging, Mayo Clinic, Rochester, MN 55905, USA

²Henry Wellcome Biogerontology Laboratory, Institute for Ageing and Health, University of Newcastle, Newcastle upon Tyne, UK

Summary

Fat tissue, frequently the largest organ in humans, is at the nexus of mechanisms involved in longevity and age-related metabolic dysfunction. Fat distribution and function change dramatically throughout life. Obesity is associated with accelerated onset of diseases common in old age, while fat ablation and certain mutations affecting fat increase life span. Fat cells turn over throughout the life span. Fat cell progenitors, preadipocytes, are abundant, closely related to macrophages, and dysdifferentiate in old age, switching into a pro-inflammatory, tissue-remodeling, senescent-like state. Other mesenchymal progenitors also can acquire a pro-inflammatory, adipocyte-like phenotype with aging. We propose a hypothetical model in which cellular stress and preadipocyte overutilization with aging induce cellular senescence, leading to impaired adipogenesis, failure to sequester lipotoxic fatty acids, inflammatory cytokine and chemokine generation, and innate and adaptive immune response activation. These pro-inflammatory processes may amplify each other and have systemic consequences. This model is consistent with recent concepts about cellular senescence as a stress-responsive, adaptive phenotype that develops through multiple stages, including major metabolic and secretory readjustments, which can spread from cell to cell and can occur at any point during life. Senescence could be an alternative cell fate that develops in response to injury or metabolic dysfunction and might occur in nondividing as well as dividing cells. Consistent with this, a senescent-like state can develop in

preadipocytes and fat cells from young obese individuals. Senescent, pro-inflammatory cells in fat could have profound clinical consequences because of the large size of the fat organ and its central metabolic role.

Key words: aging; cellular senescence; diabetes; fat tissue; inflammation; obesity; preadipocyte.

Introduction

Fat tissue is at the nexus of mechanisms and pathways involved in longevity, genesis of age-related diseases, inflammation, and metabolic dysfunction. Major changes in fat distribution and function occur throughout life. In old age, these changes are associated with diabetes, hypertension, cancers, cognitive dysfunction, and atherosclerosis leading to heart attacks and strokes (Guo *et al.*, 1999; Lutz *et al.*, 2008). Excess or dysfunctional fat tissue appears to accelerate onset of multiple age-related diseases, while interventions that delay or limit fat tissue turnover, redistribution, or dysfunction in experimental animals are associated with enhanced healthspan and maximum life span. For example, obesity leads to reduced life span and clinical consequences similar to those common in aging (Ahima, 2009). Conversely, life span is extended: (i) by caloric restriction [which preferentially leads to reduced visceral fat (Barzilai & Gupta, 1999; Masoro, 2006)]; (ii) in fat cell insulin receptor (FIRKO), insulin receptor substrate-1 (IRS-1), and S6 kinase-1 knockout mice [each of which has limited fat development (Bluher *et al.*, 2003; Um *et al.*, 2004; Selman *et al.*, 2008, 2009)]; (iii) in growth hormone receptor knockout (GHRKO) mice [which have reduced IGF-1, delayed increase in the ratio of visceral to subcutaneous fat, and most likely reduced fat cell progenitor turnover (Berryman *et al.*, 2008)]; (iv) with rapamycin treatment [which limits fat tissue development (Chang *et al.*, 2009; Harrison *et al.*, 2009)]; and (v) after surgical removal of visceral fat (Muzumdar *et al.*, 2008). One reason why age-related changes in fat tissue function may entail such profound systemic consequences is that fat is frequently the largest organ in humans. Indeed, it constitutes over half the body in an alarmingly high and increasing number of people [e.g., in women, who have a higher percent body fat than men, with a body mass index (BMI) over 35 kg m⁻²].

Exciting new data are beginning to point to the cell biological and molecular mechanisms that determine how aging impacts fat tissue function and how this, in turn, leads to age-related disease. Lessons from what happens in obesity are especially illuminating. In particular, inflammatory processes linked to cellular senescence in fat tissue could be pivotal. Fat tissue is important in host defense, immunity, injury responses, and production of inflammatory cytokines and chemokines. It is rich in progenitors

Correspondence

James L. Kirkland, Robert and Arlene Kogod Center on Aging, Mayo Clinic, Guggenheim 7-01A, 200 First St., S.W., Rochester, MN 55905, USA. Tel.: (507) 266 9151; fax: (507) 293 3853; e-mail: kirkland.james@mayo.edu

Accepted for publication 26 May 2010

Re-use of this article is permitted in accordance with the Terms and Conditions set out at <http://www3.interscience.wiley.com/authorresources/onlineopen.html>

that can produce pro-inflammatory factors and that are susceptible to cellular senescence. We suggest the possibility that cellular injury responses, activation of innate immunity, accumulation of dysfunctional, dysdifferentiated progenitors [mesenchymal macrophage- and adipocyte-like default (MAD) cells (Kirkland *et al.*, 2002)], and cellular senescence may all be within a spectrum of activated pro-inflammatory fates comprising an alternative differentiation state. Accumulation of senescent cells in fat with aging could be caused by increased generation of these cells owing to a combination of replicative, cytokine-induced, and metabolic stresses as well as reduced removal of senescent cells because of failure of immune cells from older individuals to respond efficiently to chemokines released by senescent cells. In cancer, these chemokines cause the immune system to hone in on senescent cells and the cancer cells around them, resulting in destruction of the cancer cells and removal of the senescent cells (Xue *et al.*, 2007). Furthermore, there are indications that a senescent-like state can occur in nonreplicating, differentiated cells in fat tissue. If true, these points would challenge existing concepts about cellular senescence. To begin to address these hypotheses, relevant findings about aging, obesity, cellular senescence, and inflammation in fat tissue will be considered.

Fat tissue

Fat tissue function

In addition to storing energy, fat is important in immune and endocrine function, thermoregulation, mechanical protection, and tissue regeneration. The main role of fat is to store calorically dense fatty acids. These highly reactive, cytotoxic molecules are sequestered as less reactive triglyceride within fat droplets, protecting against systemic lipotoxicity [cytotoxicity owing to fatty acids and lipid metabolites; (Tchkonja *et al.*, 2006a)]. To accommodate wide swings in nutrient availability, fat tissue is capable of rapid, extensive changes in size, especially subcutaneous fat, which is not subject to the anatomic constraints to growth that limit visceral fat. Growth is accomplished through changes in fat cell size or number that vary in magnitude among fat depots.

Adipose tissue is located strategically beneath the skin and around vital organs, where it protects against infection and trauma. Bacterial and fungal infections of fat are uncommon, and metastases are unusual, likely related to the innate and adaptive immune elements in fat tissue, as well as potentially high local fatty acid concentrations that are lethal to pathogens and nonadipose cell types (Tchkonja *et al.*, 2006a). Dysregulated activation of fat tissue immune responses may predispose individuals to the metabolic dysfunction common in both obesity and aging.

Fat tissue produces hormones, including IL-6, angiotensin II, leptin, adiponectin, and IGF-1 (in response to GH), and activates hormones, for example glucocorticoids and sex steroids. It releases paracrine factors in an endocrine-like fashion by devel-

oping in target organs and releasing factors that impact their function. For example, fat in muscle regulates muscle glucose homeostasis and insulin responses (Abel *et al.*, 2001). In addition to regional variation in fat tissue endocrine and paracrine factor production, differences in venous drainage contribute to the distinct metabolic effects of different fat depots. For example, omental and some regions of mesenteric fat drains directly into the liver through the portal vein.

Adipose tissue is involved in thermoregulation, both by preventing heat loss through its insulating effects and by generating heat in brown fat. Fat affords mechanical protection by developing at sites of mechanical stress or pressure. It forms a buffer that dissipates pressure over bony prominences, preventing skin breakdown. Fat is rich in mesenchymal progenitors that can give rise to multiple cell types, including fat cells (Cartwright *et al.*, 2007). The multipotent progenitors resident in fat may promote tissue regeneration during wound healing.

Aging

Fat tissue mass increases through middle age and declines in old age (Visser *et al.*, 2003; Raguso *et al.*, 2006). Fat is redistributed among different fat depots over time, especially during and after middle age, when fat redistributes from subcutaneous to intra-abdominal visceral depots (Meunier *et al.*, 1971; Kotani *et al.*, 1994; Matsuzawa *et al.*, 1995; Kyle *et al.*, 2001; Raguso *et al.*, 2006; Slawik & Vidal-Puig, 2006; Cartwright *et al.*, 2007; Rabkin, 2007; Kuk *et al.*, 2009). Consistent with this, the percent of meal fat stored in subcutaneous depots is lower in older than younger men and women, and abdominal circumference increases by 4.0 cm every 9 years in adult women (Hughes *et al.*, 2004; Koutsari *et al.*, 2009). In old age, fat is redistributed outside fat depots, accumulating in bone marrow, muscle, liver, and other ectopic sites. As in aging, genetic and acquired lipodystrophic syndromes are associated with fat tissue dysfunction, subcutaneous fat loss, increased visceral and ectopic fat, and metabolic syndrome [glucose intolerance, insulin resistance, central obesity, dyslipidemia, and hypertension (Garg & Agarwal, 2009)]. Metabolic syndrome in the elderly, in turn, is associated with increased inflammation, cardiovascular and all-cause mortality, cognitive impairment, and accelerated functional decline (Koster *et al.* 2010; Morley, 2004).

As in humans, mice and rats have fat redistribution and ectopic fat deposition with aging. This is delayed in mouse models with increased maximum life span because of growth hormone and/or insulin-like growth factor-1 (IGF-1) deficiency. While short-term growth hormone exposure decreases visceral fat by enhancing lipolysis, in animals with lifelong excess growth hormone, fat redistribution begins earlier, advances faster, and is associated with decreased life span (Berryman *et al.*, 2004, 2009; Palmer *et al.*, 2009). Removal of visceral fat enhances insulin sensitivity and extends maximum life span in rats (Barzilai *et al.*, 1999; Muzumdar *et al.*, 2008; Huffman & Barzilai, 2009). Conversely, decreased ability of subcutaneous adipocytes to store lipid, as occurs with aging, may contribute to metabolic

complications by causing systemic lipotoxicity (Lelliott & Vidal-Puig, 2004; Carley & Severson, 2005; Unger, 2005; Uranga *et al.*, 2005; Tchkonina *et al.*, 2006a; Kuk *et al.*, 2009). Thus, fat redistribution with aging occurs across species and is associated with age-related diseases, lipotoxicity, and reduced longevity, while retention of a high ratio of functioning subcutaneous to visceral fat is associated with enhanced longevity.

Substantial changes in fat tissue metabolic function occur during aging, with declines in insulin, lipolytic, and fatty acid responsiveness (Bertrand *et al.*, 1980; Yu *et al.*, 1982; Kirkland & Dax, 1984; Yki-Jarvinen *et al.*, 1986; Silver *et al.*, 1993; Gregerman, 1994; Kirkland & Dobson, 1997; Kirkland *et al.*, 2002; Das *et al.*, 2004; Tchkonina *et al.*, 2006a). Together with preadipocyte dysfunction, impairments in ability to accumulate or mobilize lipid with aging reduce the dynamic range over which fat cells can store or release energy or respond to excess systemic lipotoxic fatty acids.

Fat tissue cytokines, including tumor necrosis factor- α (TNF α) and interleukin (IL-6), can increase with aging (Morin *et al.*, 1997; Starr *et al.*, 2009). Increased adiponectin, a cytokine that exists in several isoforms and that originates from fat as well as other tissues, has been associated with reduced risk of metabolic syndrome in the elderly (Lim *et al.* 2010; Stenholm *et al.*, 2009). It is higher in centenarians and their offspring than the general population (Atzmon *et al.*, 2008). However, increased adiponectin is associated with increased mortality in the elderly, perhaps related to production by the vascular system in atherosclerosis (Rizza *et al.* 2010; Poehls *et al.*, 2009). More needs to be done to understand whether there are age-related changes in adiponectin production by cells in fat tissue and what the consequences are.

Immune effector abundance appears to change with aging in a fat depot-dependent manner. Macrophage abundance increases in subcutaneous fat with aging in mice (Jerschow *et al.*, 2007). However, macrophage numbers that are already high in intra-abdominal fat of young mice do not increase further with aging (Harris *et al.*, 1999; Jerschow *et al.*, 2007). Little is known about the impact of aging on fat tissue lymphocyte, mast cell, or macrophage abundance in humans.

Brown fat generates heat through uncoupled mitochondrial oxidative phosphorylation. Aging is associated with loss of brown fat as well as brown fat preadipocyte dysfunction in rodents (Gabaldon *et al.*, 1998; McDonald & Horwitz, 1999; Gabaldon *et al.*, 2003). This is delayed by caloric restriction (Valle *et al.*, 2008). Brown fat also decreases with aging in humans, in whom it is interspersed with white fat in the neck and upper chest (Cypess *et al.*, 2009). Decreased brown fat may contribute to thermal dysregulation and energy imbalance.

Obesity

Obesity has been likened to an accelerated form of fat tissue aging (Ahima, 2009; Minamino *et al.*, 2009; Tchkonina *et al.*, 2009). Obesity causes premature death from many of the same causes as those common in elderly lean individuals: diabetes,

heart attacks, strokes, cancer, and dementia (Bjorntorp, 1990; Denke *et al.*, 1993, 1994; Colditz *et al.*, 1995; Lean, 2000). Obesity and aging are both associated with chronic, low-grade inflammation and insulin resistance, increased local and circulating proinflammatory, chemotactic, and procoagulant proteins, and ectopic lipid deposition with lipotoxicity (Hotamisligil & Spiegelman, 1994; Samad *et al.*, 1996, 1997; Vgontzas *et al.*, 1997; Fried *et al.*, 1998; Loffreda *et al.*, 1998; Samad *et al.*, 1998; Ferri *et al.*, 1999; Visser *et al.*, 1999; Perreault & Marette, 2001; De Pergola & Pannaciuoli, 2002; Weyer *et al.*, 2002; Sartipy & Loskutoff, 2003; Takahashi *et al.*, 2003; Weisberg *et al.*, 2003; Xu *et al.*, 2003; Curat *et al.*, 2004; Tchkonina *et al.*, 2006a). This is especially true in massive or visceral obesity. As in aging, fat tissue adipogenic transcription factor expression is decreased in obesity, and inflammatory mediators, including TNF α and IL-6, are increased (Nadler *et al.*, 2000; Xu *et al.*, 2002; Weisberg *et al.*, 2003; Xu *et al.*, 2003; Nair *et al.*, 2005; Jerschow *et al.*, 2007). Much more is known about fat tissue dysfunction in obesity than aging. Analysis of processes causing fat tissue dysfunction in obesity could point to mechanisms contributing to metabolic dysfunction with aging and even the aging process itself.

Events leading to fat tissue inflammation in obesity have been investigated by examining effects of high fat feeding in rodents (Fig. 1). These diets induce fat tissue inflammatory cytokine, chemokine, and extracellular matrix (ECM)-modifying protein production within days to weeks (Xu *et al.*, 2003; Suganami *et al.*, 2005; Nishimura *et al.*, 2009). This is associated with shifts in T-lymphocyte subsets, rather than absolute numbers of T lymphocytes (Feuerer *et al.*, 2009; Nishimura *et al.*, 2009). High fat feeding results in an increased proportion of CD8⁺ effector T lymphocytes, with a progressive increase in cells releasing pro-inflammatory T_H1 cytokines, relative to CD4⁺ helper cells and T regulatory cells [T_{regs}] (Feuerer *et al.*, 2009; Nishimura *et al.*, 2009; Winer *et al.*, 2009). This also occurs in humans: CD8A is higher and T_{regs} are reduced in fat tissue from obese compared to lean humans (Feuerer *et al.*, 2009; Nishimura *et al.*, 2009). Fat tissue from obese mice induces CD8⁺ lymphocyte activation and proliferation in coculture (Nishimura *et al.*, 2009), suggesting chemokines produced by fat could be upstream of changes in T-lymphocyte subsets. Fat also becomes infiltrated by mast cells as obesity develops in mice and humans (Liu *et al.*, 2009). Mast cells contribute to production of IL-6, interferon- γ , and metabolic complications of obesity, including insulin resistance and fatty liver.

Following shifts in T-lymphocyte subsets and mast cell accumulation during development of obesity, fat becomes infiltrated by classically activated M1 macrophages (Weisberg *et al.*, 2003; Xu *et al.*, 2003; Kintscher *et al.*, 2008; Liu *et al.*, 2009; Lumeng *et al.*, 2009; Nishimura *et al.*, 2009). This is likely due to chemokines, including interferon- γ [from T lymphocytes, and mast cells (Kintscher *et al.*, 2008; Liu *et al.*, 2009; Sebastian *et al.*, 2009; Winer *et al.*, 2009)], monocyte chemoattractant protein-1 [MCP-1; from preadipocytes and other cell types (Gustafson *et al.*, 2009)], RANTES [from preadipocytes, endothelial cells,

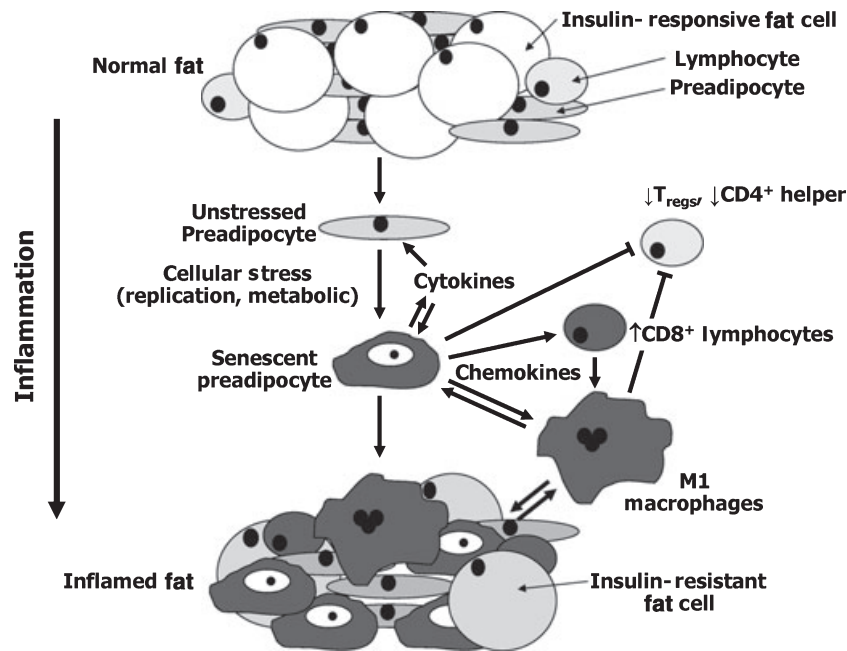


Fig. 1 Hypothetical model of the chain of events culminating in fat tissue inflammation in obesity. Preadipocytes and fat tissue endothelial cells may acquire an activated, pro-inflammatory, senescent-like phenotype in response to repeated replication, fatty acids, toxic metabolites, chronically high IGF-1, glucose, or other stimuli (gray = inflamed). Inflammatory cytokines could spread this activated secretory phenotype from cell to cell and block full differentiation of preadipocytes into insulin-responsive fat cells, amplifying the process. Chemokines, cytokines, and ECM modifiers produced by pro-inflammatory cells might activate adaptive immune responses. Shifts from anti- to proinflammatory T-lymphocyte subsets and mast cell infiltration owing to cytokine and lymphokine production, toxic metabolites (including fatty acids and reactive oxygen species), and cytokines released by inflamed preadipocytes and endothelial cells may combine to promote M1 macrophage activation. The inflammatory cytokines could induce systemic effects, further impede adipogenesis, and promote fat cell lipolysis, releasing fatty acids that aggravate the fat tissue pro-inflammatory state and cause systemic lipotoxicity. Similar processes could be involved in age-related fat tissue dysregulation and metabolic dysfunction. Some of these processes appear to vary in extent among fat depots in obesity (Feuerer *et al.*, 2009; Nishimura *et al.*, 2009; Winer *et al.*, 2009) as well as aging (Cartwright *et al.*, 2010).

and other cell types (Feuerer *et al.*, 2009)], and RARRES2 [from preadipocytes (Kralisch *et al.*, 2009)]. Little MCP-1 or RANTES is produced by fat cells themselves (Fain *et al.* 2009).

The stromal vascular fraction of adipose tissue (comprising preadipocytes, endothelial cells, immune cells, and other cell types) may be the main source of inflammatory cytokines and chemokines produced by fat (Fain *et al.* 2009; Wu *et al.*, 2007; Gustafson *et al.*, 2009). Macrophage infiltration owing to a high fat diet depends more on cells in the stromal vascular fraction of fat tissue than fat cells (Weisberg *et al.*, 2003). Once activated, macrophages release yet more inflammatory cytokines that lead to further production of MCP-1 and other chemokines, inducing further macrophage infiltration and inflammation in a vicious cycle. A central question that has not been fully answered is: what cell types, metabolites, and/or antigens are upstream of the shifts in T-lymphocyte subsets and mast cell accumulation that precede macrophage infiltration?

Fat tissue distribution in obesity

Different fat depots make distinct contributions to the pro-inflammatory and clinical consequences of obesity and, potentially, aging. Visceral fat enlargement is more strongly associated with ectopic fat deposition, lipotoxicity, and metabolic disease than generalized obesity, especially in old age (Carr

et al., 2004; Tchkonja *et al.*, 2006a; Wannamethee *et al.*, 2007; Gustafson *et al.*, 2009; Thomou *et al.*, 2010). Even otherwise lean individuals with relatively more intra- than extra-abdominal fat are at increased risk for diabetes and mortality (Pischon *et al.*, 2008). Removing intra-abdominal fat reduces insulin resistance more profoundly than removing subcutaneous fat from rodents (Barzilai *et al.*, 1999; Weber *et al.*, 2000; Gabriely *et al.*, 2002; Huffman & Barzilai, 2009). Removing large amounts of subcutaneous fat from humans does not improve insulin sensitivity (Klein *et al.*, 2004). Subcutaneous fat expansion in obesity may actually be protective (Kim *et al.*, 2007; Tran *et al.*, 2008). Cytokine and chemokine production by different fat depots varies, with visceral fat being more pro-inflammatory (Samaras *et al.* 2010; Einstein *et al.*, 2005; Tchkonja *et al.*, 2006a; Huffman & Barzilai, 2009; Starr *et al.*, 2009; Thomou *et al.*, 2010). IL-6 levels are higher in visceral than subcutaneous fat in mice, and nutrient excess induces more visceral fat expression of TNF α and plasminogen activator inhibitor-1 (PAI-1), a hemostatic factor associated with atherosclerosis [Einstein *et al.*, 2005; Starr *et al.*, 2009].

Is obesity accelerated fat tissue aging?

While obesity is associated with accelerated development of diseases common in old age, mechanisms of fat tissue dysfunction

in obesity differ from aging in important ways. Fat cell size is increased in many depots in obesity (Fried & Kral, 1987) and is associated with fat cell death and macrophage infiltration around the dying cells (Cinti *et al.*, 2005). In aging, unlike obesity, this may not contribute substantially to inflammation, because fat cells are generally smaller in old than middle age (Bertrand *et al.*, 1978, 1980). Whole fat tissue gene expression profiles differ in obesity from changes during development (Miard & Picard, 2008). Fat tissue transcripts that change during development (four compared with 12 month old mice) did not correlate well with transcripts affected by obesity (4-month-old obese compared to lean mice). This could be related to differences between changes in fat tissue cellular composition during development from those in obesity. For example, macrophage infiltration in visceral fat from young obese individuals is more impressive than lean old individuals (Weisberg *et al.*, 2003; Xu *et al.*, 2003; Wu *et al.*, 2007).

Whether the basis of fat tissue dysfunction in obesity and aging is the same is more than academic. Clinical consequences of obesity are increasingly close to being amenable to novel interventions based on targeting inflammation and fat tissue cellular composition. For example, antibody-mediated CD8⁺ depletion reduces high fat diet-induced TNF α , IL-6, and M1 macrophage abundance and improves insulin responsiveness in mice (Nishimura *et al.*, 2009). CD3 antibody restores T_{regs}, decreases pro-inflammatory M1 relative to anti-inflammatory M2 macrophages, increases antidiabetic IL-10, and reverses

insulin resistance for over 4 months despite a high fat diet (Winer *et al.*, 2009). Injection of an IL-2 antibody increases T_{regs} and anti-inflammatory IL10 in abdominal fat and decreases blood glucose in mice on a high fat diet (Feuerer *et al.*, 2009). Transplantation of anti-inflammatory T_H2 cells into lymphocyte-deficient mice reverses insulin resistance and MCP-1 owing to a high-fat diet (Winer *et al.*, 2009). Reducing mast cells by genetic manipulation or pharmacologic stabilization with disodium chromoglycate reduces hepatic steatosis, circulating inflammatory cytokines and chemokines, angiogenesis, and insulin resistance in obese mice (Liu *et al.*, 2009). Blocking TLR4 in cells originating from bone marrow or ablating CD11c⁺ macrophages reduces insulin resistance in obese mice (Patsouris *et al.*, 2008; Saberi *et al.*, 2009). To the extent that age-related fat tissue dysfunction is similar to obesity, analogous interventions might prevent clinical consequences of age-related fat tissue dysfunction.

Preadipocytes

Preadipocyte function

Preadipocytes comprise 15–50% of cells in fat, one of the largest progenitor pools in the body (Fig. 2). Preadipocytes replicate in response to mitogens, including IGF-1 (Boney *et al.*, 2001; Sekimoto *et al.*, 2005). They are mainly resident in fat depots, although a small pool of circulating fat cell progenitors exists

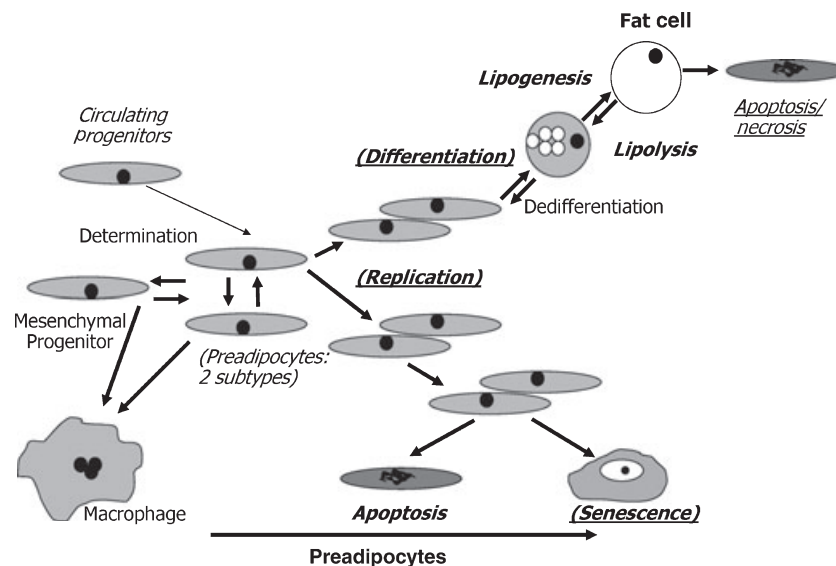


Fig. 2 Impact of aging, obesity, anatomic origin, and serial passage on cell dynamic mechanisms of fat tissue turnover. Up to 50% of cells in fat tissue are committed preadipocytes that arise from multipotent, slowly replicating mesenchymal progenitor cells and possibly circulating progenitors (Hong *et al.*, 2005; Crossno *et al.*, 2006). Preadipocyte numbers are maintained by replication. Preadipocytes can reversibly switch into a slowly replicating subtype, can become macrophage-like, and may be able to progress up or down the adipocytic lineage (Cousin *et al.*, 1999; Charriere *et al.*, 2003; Tchkonja *et al.*, 2005; Gustafson *et al.*, 2009). Preadipocytes are depleted by differentiation into fat cells, apoptosis, necrosis, and cellular senescence. Enlargement of fat cells (lipid accumulation) and maintenance of insulin responsiveness are tied to processes initiated during differentiation, including adipogenic transcription factor expression. Fat cells, especially large fat cells, can be removed by a process with features of both apoptosis and necrosis and that can induce inflammation. The balance among these cell dynamic properties determines preadipocyte and fat cell numbers. Cell dynamic processes that vary with aging are in bold, obesity are underlined, anatomic origin in *italics*, and serial passage in parentheses. These differences persist for at least 40 population doublings in cloned preadipocytes in the case of anatomic origin, 16 in aging, and 8 in obesity.

(Crossno *et al.*, 2006). Preadipocytes, in turn, may arise from or be the same as the multipotent mesenchymal progenitors (also referred to as adipose tissue stem cells) that tend to be aligned along fat tissue blood vessels in a pericyte-like fashion (Tang *et al.*, 2008). Preadipocytes resident in different fat depots are distinct cell subtypes that differ in developmental gene expression and capacities for replication, differentiation, and apoptosis (Yamamoto *et al.* 2010; Kirkland *et al.*, 1990; Tchkonja *et al.*, 2001, 2002, 2006b, 2007b). These differences persist for at least 40 population doublings in strains made by expressing telomerase in single human preadipocytes from different fat depots. Regional differences in preadipocyte clonal capacities for replication and adipogenesis predict subsequent fat tissue growth (Wang *et al.*, 1989).

Preadipocyte metabolic and secretory profiles are distinct from differentiated fat cells and vary among fat depots (Kirkland *et al.*, 1994, 2003; Tchkonja *et al.*, 2007b). Preadipocytes express toll-like receptors and have full innate immune response capability (Lin *et al.*, 2000; Chung *et al.*, 2006; Vitseva *et al.*, 2008). Preadipocytes with activated immune responses likely make a larger contribution than macrophages to age-related fat tissue dysfunction because of their numbers (Xu *et al.*, 2002; Gustafson *et al.*, 2009; Mack *et al.*, 2009). Gene expression profiles of preadipocytes are closer to macrophages than fat cells (Charriere *et al.*, 2003). TNF α and hypoxia induce preadipocytes to release cytokines and chemokines that activate endothelial cells and promote macrophage infiltration (Mack *et al.*, 2009). Treatment of undifferentiated human preadipocytes with TNF α or lipopolysaccharide (LPS) induces CD68, MIP1 α , IL-1 β , and GM-CSF expression (Gustafson *et al.*, 2009). Activated preadipocytes can even acquire a macrophage-like morphological phenotype (Cousin *et al.*, 1999; Gustafson *et al.*, 2009). Their plasticity and capacity to mount innate immune responses enable preadipocytes to participate in wound repair and defense against infection but also predispose them to contribute to fat tissue inflammation and dysfunction.

The main role of preadipocytes is to give rise to new fat cells. Following initiation of differentiation through signaling pathways activated by fatty acids, IGF-1, glucocorticoids, and other stimuli, a cascade of transcription factors underlies acquisition and maintenance of the fat cell phenotype (Lowell, 1999; Rosen, 2005). The key 'bottleneck' in this process is at the level of the adipogenic transcription factors, peroxisome proliferator-activated receptor- γ (PPAR γ) and CCAAT/enhancer binding protein- α [C/EBP α ; (Lin & Lane, 1994; Hu *et al.*, 1995; Wu *et al.*, 1995; Yeh *et al.*, 1995; Wu *et al.*, 1999; Farmer, 2005)]. PPAR γ binds a ligand [e.g., endogenous or dietary lipids or thiazolidinedione (TZD) antidiabetic drugs], heterodimerizes with a ligand-bound retinoid receptor and then induces C/EBP α (Wu *et al.*, 1996; Hamm *et al.*, 2001). C/EBP α , in turn, further increases PPAR γ expression (Clarke *et al.*, 1997; Burgess-Beusse *et al.*, 1999). C/EBP α and PPAR γ cooperate in regulating downstream adipogenic genes (Hollenberg *et al.*, 1997; El Jack *et al.*, 1999). Sustained activity of both is necessary for development of fully

functional, insulin-responsive fat cells and for downregulating the pro-inflammatory proclivities of preadipocytes.

Aging and preadipocyte function

Extensive changes in preadipocyte function occur with aging [Fig. 2; (Djian *et al.*, 1983; Wang *et al.*, 1989; Kirkland *et al.*, 1990, 1993, 1994, 1997; Kirkland & Dobson, 1997; Kirkland & Hollenberg, 1998; Caserta *et al.*, 2001; Karagiannides *et al.*, 2001; Kirkland *et al.*, 2002; Karagiannides *et al.*, 2006b; Guo *et al.*, 2007; Tchkonja *et al.*, 2007a; Cartwright *et al.*, 2010)]. These include declines in preadipocyte replication (Djian *et al.*, 1983; Kirkland *et al.*, 1990; Kirkland & Hollenberg, 1998; Schipper *et al.*, 2008), decreased adipogenesis (Kirkland *et al.*, 1990, 1993; Karagiannides *et al.*, 2001, 2006b), increased susceptibility to lipotoxicity (Guo *et al.*, 2007), and increased pro-inflammatory cytokine, chemokine, ECM-modifying protease, and stress response element expression (Tchkonja *et al.*, 2007a; Cartwright *et al.*, 2010). These changes progress at different rates and to different extents in preadipocytes from different fat depots (Djian *et al.*, 1983; Kirkland *et al.*, 1990; Schipper *et al.*, 2008; Cartwright *et al.*, 2010). They are inherent: age-dependent declines in replication and differentiation remain evident in most clones derived from single preadipocytes cultured in parallel from animals of different ages for over a month (Djian *et al.*, 1983; Kirkland *et al.*, 1990). However, these changes do not occur uniformly in every preadipocyte: occasional clones derived from old animals replicate and accumulate lipid like the majority of clones from young animals, and some clones from young animals behave more like cells from old animals (Kirkland *et al.*, 1990).

C/EBP α , PPAR γ , and their target genes are lower in preadipocytes cultured from older than younger humans and rats following exposure to differentiation medium (Karagiannides *et al.*, 2001; Schipper *et al.*, 2008). PPAR γ and C/EBP α are reduced in fat tissue from various species in old age, including primates (Hotta *et al.*, 1999; Karagiannides *et al.*, 2001). These adipogenic transcription factors also decline in serially passaged human preadipocytes exposed to differentiation-inducing medium, with six population doublings being sufficient to detectably impair adipogenesis (Tchkonja *et al.*, 2006b; Noer *et al.*, 2009). Human preadipocyte replicative arrest occurs after approximately 35 population doublings.

The age-related impairment in adipogenesis occurs at a point between the early increase in C/EBP β transcription and subsequent increases in PPAR γ and C/EBP α (Karagiannides *et al.*, 2001). Overexpressing C/EBP α restores capacity for lipid accumulation by preadipocytes from old individuals. Redundant mechanisms impede adipogenesis at this point, including increased expression of C/EBP homologous protein (CHOP) and an alternatively translated, short C/EBP β isoform, C/EBP β liver-activating protein (LIP), that lacks the full C/EBP β -transactivating domain (Karagiannides *et al.*, 2006b; Tchkonja *et al.*, 2007a). Increased binding of CUG triplet repeat-binding protein (CUGBP) to the 5' region of C/EBP β mRNA with aging causes LIP

to be translated (Karagiannides *et al.*, 2006b). CUGBP activity, LIP, and CHOP are cellular stress responsive and induced by TNF α . Preadipocyte TNF α secretion, in turn, increases with aging (Tchkonja *et al.*, 2007a). Thus, redundant, stress responsive, inherent processes impair adipogenesis with aging.

Decreased adipogenic transcription factors could contribute to age-related declines in fat cell size, capacity to store lipid, and insulin responsiveness [both PPAR γ and C/EBP α are required for fat cells to be insulin-responsive; (El Jack *et al.*, 1999)]. These changes occur at different rates in different depots, with subcutaneous depots being particularly affected, potentially contributing to fat redistribution, lipodystrophy, ectopic lipid accumulation, lipotoxicity, and metabolic dysfunction. Even preadipocytes become susceptible to lipotoxicity because of fatty acids in old age, related to reduced expression of adipogenic transcription factors and enzymes required for processing fatty acids into triglycerides (Guo *et al.*, 2007). Fatty acids also induce fat tissue cytokine release (Suganami *et al.*, 2005), further impeding adipogenesis, leading to a downward spiral. While influences extrinsic to fat tissue, including systemic disease and changes in diet, activity, and hormones, likely contribute to fat dysfunction in old age, inherent, age-related changes in preadipocytes set the stage for fat tissue and systemic metabolic dysfunction.

Reduced PPAR γ in mouse models is associated with lipodystrophy and reduced life span (Argmann *et al.*, 2009). An increase in maximum life span owing to manipulating PPAR γ would need to be demonstrated before concluding definitively that it is involved in progression of aging. On the other hand, gene knock-in replacement of C/EBP α with C/EBP β results in increased mean and maximum life span together with leanness, resistance to diet-induced obesity, and increased energy expenditure (Chiu *et al.*, 2004). Thus, age-related changes in preadipocyte and fat cell adipogenic transcription factors may contribute not only to morbidity, manipulating them may also prove to delay age-related dysfunction.

MAD cells

Generation of MAD cells potentially contributes to ectopic lipid accumulation in old age (Kirkland *et al.*, 2002). Preadipocytes are closely related to other mesenchymal progenitors, including osteoblasts, muscle satellite cells, chondroblasts, and macrophages. In old age, muscle satellite cells, osteoblasts, and macrophages can sometimes dysdifferentiate into cells with an incomplete, adipocyte-like phenotype, with lipid accumulation and expression of the fat cell-specific fatty acid-binding protein, aP2, and PPAR γ (but insufficient PPAR γ for differentiation into fully functional, insulin-responsive fat cells). Failure to express sufficient levels of the transcription factors that direct uncommitted mesenchymal cells into becoming fully functional, specialized cells may contribute to their developing into partially differentiated adipocyte-like cells by default. In muscle, satellite cells from old mice acquire a partial adipocyte phenotype with more lipid accumulation and aP2, C/EBP α , and PPAR γ expres-

sion than cells from young mice (Taylor-Jones *et al.*, 2002). In bone, osteoblast formation from mesenchymal progenitors is decreased with aging, together with increased adipogenesis (Jilka *et al.*, 1996; Rosen *et al.*, 2009). These changes might contribute to age-related accumulation of fat in bone marrow and muscle as well as osteoporosis.

Preadipocytes in obesity

Increased fat cell size accounts for increased fat mass in mild obesity, while severe obesity leads to increased numbers of fat cells and preadipocytes, together with increased fat cell turnover because of apoptosis and/or necrosis (Shillabeer *et al.*, 1990; Cinti *et al.*, 2005; Lacasa *et al.*, 2007; Strissel *et al.*, 2007). Preadipocytes are driven to become new fat cells in massive obesity, especially in subcutaneous fat, with preadipocyte replicative history being increased (Cinti *et al.*, 2005; Strissel *et al.*, 2007; Thomou *et al.*, 2010). Up to 10 fold more preadipocytes can be present in very massively obese than lean subjects (Table 1). Additionally, preadipocyte turnover is likely increased, because preadipocytes develop into new fat cells as fat cell number and removal increase (Cinti *et al.*, 2005; Strissel *et al.*, 2007).

As in chronological aging and after serial passage in culture (both of which are associated with increased preadipocyte replicative histories), in obesity adipogenesis, C/EBP α , PPAR γ , and their downstream targets are decreased in preadipocytes and fat tissue (Turkenkopf *et al.*, 1988; Shillabeer *et al.*, 1990; Permana *et al.*, 2004; Nair *et al.*, 2005; Dubois *et al.*, 2006; Tchkonja *et al.*, 2006b; Gustafson *et al.*, 2009). Stromal vascular cells that are aP2⁺ (a downstream target of C/EBP α and PPAR γ) are reduced in obese women (Tchoukalova *et al.*, 2007). Impaired adipogenesis in obesity, associated with reduced downregulation of preadipocyte pro-inflammatory genes and restricted capacity to store excess fatty acid as triglyceride, may contribute to fat tissue inflammation, ectopic lipid accumulation, lipotoxicity, and insulin resistance, as occurs in aging

Table 1 Preadipocyte abundance is increased in obesity

	Nonobese	Obese
Height (m)	1.65 \pm 0.02	1.70 \pm 0.03
Weight (kg)	70 \pm 6	241 \pm 6
BMI (m kg ⁻²)	25 \pm 2	83 \pm 2
Estimated body fat (%)	20 \pm 2	58 \pm 2
Fat tissue (kg)	14 \pm 2	139 \pm 5
Preadipocytes per g ($\times 10^4$)	45 \pm 11	45 \pm 6
Preadipocytes/subject ($\times 10^9$)	6.1 \pm 2.2	63.1 \pm 9.6

Preadipocyte numbers were determined in abdominal subcutaneous fat from five nonobese and 15 massively obese subjects [as in (Kirkland *et al.*, 1994)]. Preadipocytes per g fat tissue differed little between nonobese and obese subjects, as noted by others (van Harmelen *et al.*, 2003). Amount of fat tissue was increased considerably in the obese subjects, resulting in many more preadipocytes/obese subject. The obese subjects had 31 fold more senescent preadipocytes than nonobese subjects (95% confidence limits 13–71), based on preadipocytes/subject and the ratio of SA β -gal⁺ cells in obese/lean fat tissue (=3.04). Mean \pm SEM are shown. BMI, body mass index.

(Unger, 2002; Xu *et al.*, 2002; Listenberger *et al.*, 2003; DeFronzo, 2004; Tchkonja *et al.*, 2006a; Kim *et al.*, 2007).

Despite low C/EBP α and PPAR γ , fat cell size is usually increased in obesity. Differentiating preadipocytes with low C/EBP α and PPAR γ can still accumulate lipid when exposed to fatty acids but are insulin resistant and dysfunctional, consistent with accretion of the large, insulin-resistant, C/EBP α - and PPAR γ -deficient fat cells in obesity that are associated with diabetes (Xie *et al.*, 2006; Kim *et al.*, 2007). Restricted capacity to increase fat cell number, with increases in fat cell size occurring instead, is associated with lipotoxicity and elevated diabetes risk (Dubois *et al.*, 2006; Kim *et al.*, 2007). Large fat cells in obesity may have restricted capacity to take up excess fatty acid because of: (i) low adipogenic transcription factor expression and consequently impaired machinery to process fatty acids; (ii) insulin resistance with inhibition of IRS-1 and Glut-4; (iii) increased lipolysis with fatty acid release owing to insulin resistance; (iv) instability from their large size, with increased risk of apoptosis/necrosis; and (v) high fat tissue concentrations of TNF α [which is lipolytic and anti-adipogenic; (Cinti *et al.*, 2005; Xie *et al.*, 2006; Gustafson *et al.*, 2009)]. Fat cell dysfunction in obesity, coupled with reduced ability of preadipocytes to differentiate into fat cells, may contribute to failure to sequester fatty acids, systemic lipotoxicity, and insulin resistance.

Fat tissue cellular senescence and inflammation

Cellular senescence

Cellular senescence is considered to be an irreversible block to cell cycle progression in populations of otherwise replication-competent cells (Hayflick & Moorehead, 1961; Narita & Lowe, 2005; Beausejour & Campisi, 2007; Jeyapalan & Sedivy, 2008). Replicative senescence in hyperproliferative states, such as cancer or massive obesity, may constitute a defense against morbidity by removing dysfunctional or excess progenitors from replicating pools of cells (Campisi, 2000, 2004, 2005; Xue *et al.*, 2007). The proportion of arrested cells in a population rises with increasing population doublings, rather than all cells becoming senescent at once (Martin-Ruiz *et al.*, 2004; Passos *et al.*, 2007). This is reflected *in vivo* in particular regions in different organs in old age, with a subset of cells, often less than 10%, expressing p16 and other markers and effectors of senescence (Krishnamurthy *et al.*, 2004; Wang *et al.*, 2009a). In addition to hyperproliferation, cellular senescence or stasis (Stress or Aberrant Signaling-Induced Senescence) can be induced by stresses: telomere shortening, disrupted chromatin, DNA damage, intense mitogenic signals, oncogene activation, metabolic stress, and stress owing to cell culture conditions (Sherr & DePinho, 2000; Narita *et al.*, 2003; Martin-Ruiz *et al.*, 2004; Campisi, 2005). As in replicative senescence, not all cells in a stressed population undergo stasis at the same time, implying that genetic, epigenetic, or paracrine/microenvironmental conditions confer susceptibility to senescence unequally within cell populations. This

could be related to somatic drift among the individual cells in tissues (Martin, 2009). Features of cellular senescence include large, flattened cells, enlarged nucleoli, senescence-associated β -galactosidase [SA β -gal] positivity, and other markers and mediators of senescence, such as phospho-Ser15-p53/p21 and p16/hypophosphorylated Rb pathway component expression. Unlike p21, p16 activity appears to increase in nearly all cells as senescence progresses (Jeyapalan & Sedivy, 2008). SA β -gal⁺ cells are increased in hyperproliferative diseases [e.g., cancers, psoriasis, prostatic hypertrophy, atherosclerotic plaques; (Choi *et al.*, 2000; Vasile *et al.*, 2001; Narita & Lowe, 2005; Mimura & Joyce, 2006; Jeyapalan & Sedivy, 2008; Charalambous *et al.*, 2007)].

Cellular senescence takes days to weeks to become fully established, with autocrine biochemical loops involving reactive oxygen species (ROS), IL-6, transforming growth factor- β , and other signals eventually resulting in focal accumulation of heterochromatin (Passos *et al.* 2010; Kuilman *et al.*, 2008; Kuilman & Peeper, 2009; Passos *et al.*, 2009). These heterochromatic foci can be identified by 4',6-diamidino-2-phenylindole (DAPI) staining and by the activated histones that contribute to DNA repair and stabilization, including γ -phosphorylated histone-2AX [γ H2AX; (Wang *et al.*, 2009a)]. In human replicative senescence, heterochromatic foci can be associated with telomeres (telomere-induced foci).

Cellular senescence leads to a senescent secretory phenotype with increased inflammatory cytokines, altered production of ECM-modifying proteases, and production of ROS (Freund *et al.*; Passos *et al.* 2010; Krtolica & Campisi, 2002; Parrinello *et al.*, 2005; Xue *et al.*, 2007; Coppé *et al.*, 2008). Generation of cytokines, chemokines, and ECM modifiers by senescent cells leads to death of cells around them, tissue remodeling, and attraction of immune elements. Although senescent cells are often resistant to apoptosis (Campisi, 2003), activation of the immune system by senescent cells causes removal of nearby cells as well as the senescent cells themselves (Xue *et al.*, 2007). Indeed, activation of innate immunity appears to be required for senescent cells to remove nearby cells. The innate immune response capacity of macrophages appears to be compromised with aging (Sebastian *et al.*, 2009), potentially contributing to senescent cell accumulation in old age.

Cellular senescence and inflammation in obesity

Obesity and serial passage both entail repeated preadipocyte replication and cellular stress, as well as accumulation of senescent cells, including senescent preadipocytes and endothelial cells (Minamino *et al.*, 2009; Tchkonja *et al.*, 2009). Adipose tissue SA β -gal activity and p53 increase with BMI. Abundance of SA β -gal⁺ cells also increases in fat tissue in diabetes. Interestingly, p53 and p21 are increased in the fat cell fraction from subjects with diabetes (Minamino *et al.*, 2009), suggesting a senescent-like state might occur in differentiated adipocytes, even though these cells are postmitotic and therefore would not fit the usual definition of senescence.

SA β -gal⁺ cells are more numerous in cultures of preadipocytes and endothelial cells isolated from young obese than lean rats and humans [Fig. 3; (Tchkonja *et al.*, 2009)]. Extremely obese subjects can have a burden of over 30-fold more senescent preadipocytes than nonobese subjects (Table 1). These senescent progenitors in fat tissue might initiate the infiltration of immune cells that commonly occurs in obesity, a speculation that merits testing. Immune cells, in turn, could further activate the preadipocyte population into a pro-inflammatory state. Consistent with this possibility, coculture of 3T3-L1 preadipocytes with RAW264 macrophages without direct contact induces a pro-inflammatory state with increased TNF α expression in the preadipocytes (Suganami *et al.*, 2005). Neutralizing anti-TNF α antibody prevents this.

A high burden of senescent cells in obesity could have substantial clinical impact because: (i) senescent cells restricted to a single tissue can have widespread systemic effects (Keyes *et al.*, 2006); (ii) many of the pro-inflammatory cytokines and chemokines released by these cells are associated with development of diabetes and metabolic disease; and (iii) fat is frequently the largest organ in humans. Consistent with this, upregulating p53 in fat cells and macrophages induces senescence and increases insulin resistance and inflammatory cytokines in mouse fat (Minamino *et al.*, 2009). Conversely, expressing dominant-negative p53 in fat cells and macrophages confers protection against the insulin resistance and increased fat tissue cytokines, macrophage infiltration, and SA β -gal activity caused by high fat diets (Minamino *et al.*, 2009). Thus, cellular senescence owing to high p53 and the resulting pro-inflammatory secretory phenotype could contribute to morbidity associated with obesity.

Diabetes itself is associated with cellular senescence in fat tissue. Fat tissue from diabetic humans has increased SA β -gal activity and p53, TNF α , and MCP-1 expression (Minamino *et al.*, 2009). Other fat tissue disorders, such as lipodystrophy in patients with human immunodeficiency virus (HIV) infection treated with certain antiretroviral drugs, cause fat redistribution, diabetes, and metabolic syndrome. The antiretrovirals stavudine

and zidovudine cause senescence, with SA β -gal positivity, senescent morphology, and increased p16 and p21, in cultured human fibroblasts and 3T3-F442A murine preadipocytes (Caron *et al.*, 2008). Fat tissue from patients with HIV who are on these drugs can contain senescent cells. Induction of senescence in 3T3-F442A preadipocytes, which are an immortal cell line, indicates these agents can induce preadipocyte senescence independently of replicative history. Cyclo-oxygenase-2 decreases in parallel with induction of senescence by these antiretrovirals, suggesting an association with oxidative stress. Consistent with this, exposure of human preadipocytes to H₂O₂ causes increased levels of p53, TNF α , and MCP-1 (Minamino *et al.*, 2009).

Fat tissue inflammation and cellular senescence with aging

As in obesity, aging is frequently associated with increased fat tissue and circulating pro-inflammatory cytokines, including TNF α and IL-6 (Morin *et al.*, 1997; Starr *et al.*, 2009). Increased pro-inflammatory cytokine release by preadipocytes activates adjacent cells into a pro-inflammatory state: TNF α exposure increases preadipocyte TNF α mRNA (Mack *et al.*, 2009). Although TNF α and hypoxia also increase preadipocyte cytokines that promote endothelial cell-monocyte adhesion and macrophage infiltration (Mack *et al.*, 2009), macrophages do not appear to be a major source of pro-inflammatory cytokines with aging in fat tissue (Wu *et al.*, 2007). Capacity of macrophages to be activated into a pro-inflammatory state by chemokines and cytokines generally declines with aging (Sebastian *et al.*, 2009). While macrophages increase in particular fat depots with aging, these increases are less impressive than in obesity, and macrophage numbers do not increase at all in some fat depots with aging (Harris *et al.*, 1999; Jerschow *et al.*, 2007). This is consistent with the possibility that fat cells and preadipocytes could be the main sources of the increased fat tissue inflammatory cytokines and chemokines with aging. Preadipocytes from old rats release more TNF α than from young rats,

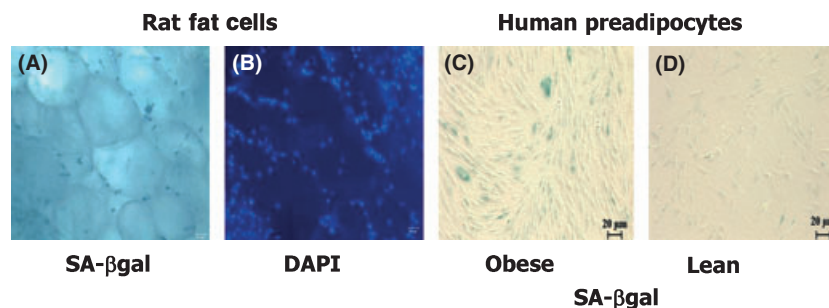


Fig. 3 Senescent preadipocytes can accumulate in fat tissue of even young individuals. Freshly isolated, whole perirenal fat tissue isolated from 2-month-old obese male Zucker rats was assayed for senescence-associated β -galactosidase (A; SA β -gal) or stained with DAPI to show nuclei (B; representative of $N = 3$ animals). Preadipocytes cultured from young obese rats had senescent-associated heterochromatic foci. Senescent cells are also increased in high fat-fed mice, express p53 (Minamino *et al.*, 2009), and are less frequent in age-matched *ad libitum* fed controls. Human preadipocytes from an obese young adult subject were SA β -gal positive (C; age 21 years.; body mass index [BMI] 50; representative of six obese subjects), while fewer preadipocytes cultured from a lean subject were senescent (D; age 26 years.; BMI 23; representative of nine lean subjects). Nevertheless, occasional senescent cells were found in preadipocytes cultured from all nine young, lean subjects.

with extent of TNF α release by preadipocytes from old animals being similar to macrophages (Tchkonina *et al.*, 2007a). IL-6 expression is also higher in preadipocytes from old than younger rats (Cartwright *et al.*, 2010). Preadipocytes from old rats and the cytokines they produce can impede adipogenesis in nearby fat cells, potentially contributing to age-related lipodystrophy and fat redistribution (Tchkonina *et al.*, 2007a; Gustafson *et al.*, 2009).

Age-related increases in fat tissue inflammatory cytokine and chemokine expression vary among fat depots (Starr *et al.*, 2009; Cartwright *et al.*, 2010). Basal IL-6, complement factor 1q, and MMP3 and MMP12 increase with aging in extraperitoneal but not intraperitoneal rat preadipocytes (Cartwright *et al.*, 2010). Increases in IL-6 caused by treatment with LPS are sixfold higher in visceral (epididymal) and 33-fold higher in interscapular subcutaneous fat from old (27 months) than younger (6 months) mice (Starr *et al.*, 2009). Thus, the extent of the age-related increase in IL-6 response is 5- to 10-fold greater in subcutaneous than visceral fat, suggesting that age-related changes in fat tissue function are more extensive in subcutaneous than visceral fat. Consistent with this, preadipocyte pro-inflammatory cytokine, chemokine, and ECM modifier production is greater in extra- than intra-peritoneal fat in old age (Cartwright *et al.*, 2010). These differences among depots in the trajectory of age-related preadipocyte dysfunction may contribute to disproportional loss of subcutaneous fat.

Age-related changes in fat tissue inflammatory profiles resemble those in obesity, in which senescent preadipocytes and endothelial cells accumulate, as well as the senescent secretory phenotype reported in skin fibroblasts and other cell types *in vitro* [Table 2; (Krtolica & Campisi, 2002; Parrinello *et al.*,

2005; Xue *et al.*, 2007; Coppé *et al.*, 2008; Minamino *et al.*, 2009; Tchkonina *et al.*, 2009; Cartwright *et al.*, 2010)]. SA β -gal activity and p16 reactivity are increased in fat tissue of mice with accelerated aging phenotypes owing to hypomorphism of the *BubR1* gene (Baker *et al.*, 2006) and after several generations of telomerase deficiency (Minamino *et al.*, 2009). Importantly, p16^{Ink4a} ablation prevents accumulation of senescent cells in BubR1 hypomorphic mice, implicating p16^{Ink4a} in establishing the senescent phenotype in this model (Baker *et al.*, 2008). Together, these findings suggest senescent cells could accumulate in fat tissue with chronological aging and that these cells might contribute to age-related fat tissue inflammation and dysfunction.

Hypothetical model and potential implications

Cellular senescence could be pivotal in the impact of fat tissue on systemic metabolism and healthspan. Cellular senescence, arguably a normally adaptive response to injury or infection, could instead become a root cause of inflammation, failure to sequester fatty acids, and dysfunction both in fat tissue and systemically during aging and in obesity (Fig. 1). In fat, extensive progenitor turnover, high fatty acid levels, toxic metabolites, prolonged IGF-1 exposure, and other mitogens could initiate senescence. Senescence might then spread from cell to cell, involving differentiated fat cells as well as preadipocytes and endothelial cells. Cytokines and chemokines produced by senescent cells appear to be capable of activating adaptive and innate immune responses that could spread cellular senescence locally and systemically. ECM-modifying proteases might expose fat tissue autoantigens or generate neoantigens, further exacerbating the process. Failure to remove senescent cells may contribute to their accumulation, both because of age-related macrophage dysfunction and effects of ECM-modifying proteases on receptors and other proteins required for optimal immune clearance. If this hypothetical model is valid, senescent cells and their products would be a logical target for therapeutic intervention in age- and obesity-related metabolic disease.

This speculative model and recent findings about fat tissue cellular senescence and inflammation prompt several questions about cellular senescence (Table S1). Among these are the following: (i) Is cellular senescence effectively an alternative form of differentiation? (ii) Can a senescent-like state develop in terminally differentiated cells? (iii) Can senescence occur at any stage during life? (iv) Does senescence spread from cell to cell in fat tissue *in vivo*? (v) Does failure of the immune system to remove senescent cells contribute to their accumulation in old age? and (vi) Is cellular senescence really at the root of age- and obesity-related fat tissue inflammation and metabolic dysfunction? As discussed later, suggestive evidence supports affirmative answers to some of these questions, but more work is required to address them definitively.

Is cellular senescence effectively an alternative form of differentiation? Cellular senescence can be viewed as a response to

Table 2 Parallels among preadipocyte and fat tissue changes in obesity, chronological aging, and after repeated replication of cultured preadipocytes and fibroblasts

Property	Obesity	Repeated replication	Aging
Dysdifferentiation	√	√*	√
↑ Inflammation	√	√	√
↑ TNF α , IL6, MMPs, PAI-1	√	√†	√‡
Altered progenitor shape	√	√	√
Insulin resistance	√		√
↑ Senescence associated β -gal	√§	√	√
↓ β oxidation, PGC-1 α	√¶		√
↑ Stathmin-like-2 (Stmn-2)	√		√‡

Cell dynamic and molecular mechanisms underlying fat tissue dysfunction in obesity in younger individuals are strikingly similar to aging. Similarities between changes in human preadipocyte and fibroblast function after serial passage *in vitro* to those in preadipocytes from obese or old subjects further support this (Tchkonina *et al.*, 2006b, 2009). Thus, obesity, in some respects, resembles an accelerated form of fat tissue aging, potentially involving fat cell progenitor hyperplasia and cellular stress.

*In (Tchkonina *et al.*, 2006b; Noer *et al.*, 2009).

†In (Mu & Higgins, 1995).

‡(Cartwright *et al.*, 2010).

§In (Minamino *et al.*, 2009; Tchkonina *et al.*, 2009).

¶In (Semple *et al.*, 2004). Other references appear in the text.

cellular stress (Ben-Porath & Weinberg, 2004). In preadipocytes, cellular senescence, the age-associated MAD state, the pro-inflammatory secretory state activated by cytokines, LPS, fatty acids, ROS, ceramide, cellular stress pathways, or other signals, and the macrophage-like phenotype that preadipocytes can assume may all be related. In addition to preadipocytes, other types of progenitors appear to be able to assume a state very much like M1 activated macrophages, based on their gene expression profiles (Charriere *et al.*, 2006). Acquisition of this pro-inflammatory state appears to involve extra- and intracellular signals that integrate to activate: (i) a chain of signaling molecules; (ii) an orchestrated cascade of transcription factors; (iii) banks of pro-inflammatory cytokines, chemokines, and ECM-modifying proteases; (iv) mechanisms that shut down replication; and (v) mechanisms that prevent usual differentiation. Perhaps senescence is an alternative cell fate that has much in common with pro-inflammatory stress-activated states.

Can a senescent-like state develop in terminally differentiated cells? Terminally differentiated fat cells might be able to acquire a senescent-like state in both aging and obesity (Wu *et al.*, 2007; Minamino *et al.*, 2009). Perhaps the view that a cellular senescent-like state can only occur in dividing cells needs reconsideration.

Can senescence occur at any stage during life? If our hypothetical model is correct, cellular senescence should be inducible at any phase in life. Even at early passage, some cells in cultured human skin fibroblast strains express markers of senescence (Martin-Ruiz *et al.*, 2004). The proportion of these cells increases with passaging or following imposition of cellular stress at early passage (Passos *et al.*, 2007). With respect to fat, senescent cells can be found in fat tissue and preadipocytes from juvenile animals and young adult humans with obesity (Fig. 3). The answer to this question appears to be yes.

Does cellular senescence spread from cell to cell? Cultured human cells and mouse cells *in vivo* that have DNA double-strand breaks and γ H2AX induced by radiation can induce DNA damage responses and γ H2AX foci in nearby cells (Sokolov *et al.*, 2007). Cytokines secreted by activated preadipocytes, macrophages, and endothelial cells can induce chemokine and cytokine expression in bystander cells in a pattern like that of the senescent secretory phenotype (Suganami *et al.*, 2005; Mack *et al.*, 2009). TNF α induces cellular senescence in preadipocytes, endothelial progenitor cells, and skin fibroblasts (Keyes *et al.*, 2006; Tchkonja *et al.*, 2009; Zhang *et al.*, 2009). Thus, it seems senescence can spread locally from cell to cell. It will be interesting to test whether fat tissue cellular senescence induced by obesity leads to generation of senescent cells elsewhere, such as in the brain. Indeed, high fat feeding induces cellular senescence in aortic endothelium, a process that is mediated by Akt and mTOR and inhibited by rapamycin (Wang *et al.*, 2009b). Whether aortic endothelial senescence results directly from increased circulating lipids owing to the high fat diet, hormones affected by the diet (e.g., insulin or IGF-1), cytokines released by senescent cells in fat or elsewhere, or a combination of mechanisms remains to be determined.

Does failure of the immune system to remove senescent cells contribute to their accumulation in old age? Macrophage function generally declines with aging (Sebastian *et al.*, 2009). Age-related alterations in the stromal microenvironment, including cytokine imbalance, could further impede macrophage function (Stout & Suttles, 2005), possibly augmenting senescent cell accumulation. This question needs to be addressed specifically in fat tissue macrophages, because macrophage properties are highly tissue dependent (Stout & Suttles, 2005; Sebastian *et al.*, 2009).

Is cellular senescence at the root of age- and obesity-related fat tissue inflammation and metabolic dysfunction? The potentially central role of preadipocytes in genesis of fat tissue inflammation and metabolic dysfunction has not received much attention. Preadipocyte cellular stress can result from repeated replication, hypoxia, ROS, chronic effects of free fatty acids or other lipids such as ceramide, hyperglycemia, or other metabolic signals. These appear to activate innate immune responses in preadipocytes, causing further cytokine and chemokine generation, potentially inducing spread of activation of pro-inflammatory responses to nearby preadipocytes and other cell types and attraction of immune cells. The preadipocyte pro-inflammatory phenotype might impede protection against lipotoxicity, contributing to systemic consequences in aging similar to those in lipodystrophies and obesity. The pathways and processes culminating in this generation of activated or senescent preadipocytes and fat cells represent potential new targets for intervention.

It seems a senescent-like, pro-inflammatory fate can be acquired in response to intra- or extracellular danger signals, inflammation, infection, excessive replication, or toxic metabolites. This spectrum of cell fates may prevent differentiation along pathways that are not desirable in the context of damage. In the case of fat tissue, this could involve preventing development of new fat cells or enlargement of existing ones in favor of acquiring cells capable of facilitating repair. Perhaps terminally differentiated cells are able to enter a senescent secretory state related to the molecular pathways that initiate senescence in dividing cell types. Studies in fat tissue are beginning to suggest that cellular senescence could be an alternative cell fate involving activation of pro-inflammatory responses owing to intra- or extracellular injury signals at any stage of life.

Acknowledgments

The authors are grateful to participants of a retreat supported by the Robert and Arlene Kogod Center on Aging for insights incorporated in this article and for the editorial support of Jacqueline Armstrong and Linda Wadum. Supported by NIH grants AG13925 (JLK) and AG31736 (JLK), the Noaber Foundation, and the Ted Nash Long Life Foundation (JLK).

Author contributions

Tamara Tchkonja: concept generation, editing, studies in the tables and figures. Dean E Morbeck, Thomas von Zglinicki, Jan

van Deursen, Joseph Lustgarten, Heidi Scoble, Sundeep Khosla: concept generation, editing. Michael D. Jensen: concept generation, editing, studies in Table 1. James L. Kirkland: concept generation, manuscript writing, editing, studies in tables and figures.

References

- Abel ED, Peroni O, Kim JK, Kim YB, Boss O, Hadro E, Minnemann T, Shulman GI, Kahn BB (2001) Adipose-selective targeting of the GLUT4 gene impairs insulin action in muscle and liver. *Nature* **409**, 729–733.
- Ahima RS (2009) Connecting obesity, aging and diabetes. *Nat. Med.* **15**, 996–997.
- Argmann C, Dobrin R, Heikkinen S, Auburtin A, Pouilly L, Cock TA, Koutnikova H, Zhu J, Schadt EE, Auwerx J (2009) Ppargamma2 is a key driver of longevity in the mouse. *PLoS Genet.* **5**, e1000752.
- Atzmon G, Pollin TI, Crandall J, Tanner K, Schechter CB, Scherer PE, Rincon M, Siegel G, Katz M, Lipton RB, Shuldiner AR, Barzilai N (2008) Adiponectin levels and genotype: a potential regulator of life span in humans. *J. Gerontol. A Biol. Sci. Med. Sci.* **63**, 447–453.
- Baker DJ, Jeganathan KB, Malureanu L, Perez-Terzic C, Terzic A, van Deursen JM (2006) Early aging-associated phenotypes in Bub3/Rae1 haploinsufficient mice. *J. Cell Biol.* **172**, 529–540.
- Baker DJ, Perez-Terzic C, Jin F, Pitel K, Niederländer NJ, Jeganathan K, Yamada S, Reyes S, Rowe L, Hiddinga HJ, Eberhardt NL, Terzic A, van Deursen JM (2008) Opposing roles for p16Ink4a and p19Arf in senescence and ageing caused by BubR1 insufficiency. *Nat. Cell Biol.* **10**, 825–836.
- Barzilai N, Gupta G (1999) Revisiting the role of fat mass in the life extension induced by caloric restriction. *J. Gerontol. A Biol. Sci. Med. Sci.* **54**, B89–B96; discussion B97–88.
- Barzilai N, She L, Liu B-Q, Vuguin P, Cohen P, Wang J, Rossetti L (1999) Surgical removal of visceral fat reverses hepatic insulin resistance. *Diabetes* **48**, 94–98.
- Beausejour CM, Campisi J (2007) Ageing: balancing regeneration and cancer. *Nature* **443**, 404–405.
- Ben-Porath I, Weinberg RA (2004) When cells get stressed: an integrative view of cellular senescence. *J. Clin. Invest.* **113**, 8–13.
- Berryman DE, List EO, Coschigano KT, Behar K, Kim JK, Kopchick JJ (2004) Comparing adiposity profiles in three mouse models with altered GH signaling. *Growth Horm. IGF Res.* **14**, 309–318.
- Berryman DE, Christiansen JS, Johannsson G, Thorner MO, Kopchick JJ (2008) Role of the GH/IGF-1 axis in lifespan and healthspan: lessons from animal models. *Growth Horm. IGF Res.* **18**, 455–471.
- Berryman DE, List EO, Palmer AJ, Chung MY, Wright-Piekarski J, Lubbers E, O'Connor P, Okada S, Kopchick JJ (2009) Two-year body composition analyses of long-lived GHR null mice. *J. Gerontol. A Biol. Sci. Med. Sci.* **65**, 31–40.
- Bertrand HA, Masoro EJ, Yu BP (1978) Increasing adipocyte number as the basis for perirenal depot growth in adult rats. *Science* **201**, 1234–1235.
- Bertrand HA, Lynd FT, Masoro EJ, Yu BP (1980) Changes in adipose mass and cellularity through the adult life of rats fed *ad libitum* or a life-prolonging restricted diet. *J. Gerontol.* **35**, 827–835.
- Bjorntorp P (1990) Obesity and adipose tissue distribution as risk factors for the development of disease. A review. *Infusionstherapie* **17**, 24–27.
- Blüher M, Kahn BB, Kahn CR (2003) Extended longevity in mice lacking the insulin receptor in adipose tissue. *Science* **299**, 572–574.
- Boney CM, Sekimoto H, Gruppuso PA, Frackelton AR Jr (2001) Src family tyrosine kinases participate in insulin-like growth factor I mitogenic signaling in 3T3-L1 cells. *Cell Growth Differ.* **12**, 379–386.
- Burgess-Beusse B, Timchenko NA, Darlington GJ (1999) CCAAT/enhancer binding protein a (C/EBPa) is an important mediator of mouse C/EBPb protein isoform production. *Hepatology* **29**, 597–601.
- Campisi J (2000) Cancer, aging and cellular senescence. *In Vivo* **14**, 183–188.
- Campisi J (2003) Cellular senescence and apoptosis: how cellular responses might influence aging phenotypes. *Exp. Gerontol.* **38**, 5–11.
- Campisi J (2004) Fragile fugue: p53 in aging, cancer, and IGF signaling. *Nat. Med.* **10**, 231–232.
- Campisi J (2005) Senescent cells, tumor suppression, and organismal aging: good citizens, bad neighbors. *Cell* **120**, 513–522.
- Carley AN, Severson DL (2005) Fatty acid metabolism is enhanced in type 2 diabetic hearts. *Biochim. Biophys. Acta* **1734**, 112–126.
- Caron M, Auclair M, Vissian A, Vigouroux C, Capeau J (2008) Contribution of mitochondrial dysfunction and oxidative stress to cellular premature senescence induced by antiretroviral thymidine analogues. *Antivir. Ther.* **13**, 27–38.
- Carr DB, Utzschneider KM, Hull RL, Kodama K, Retzlaff BM, Brunzell JD, Shofer JB, Fish BE, Knopp RH, Kahn SE (2004) Intra-abdominal fat is a major determinant of the National Cholesterol Education Program Adult Treatment Panel III criteria for the metabolic syndrome. *Diabetes* **53**, 2087–2094.
- Cartwright MJ, Tchkonja T, Kirkland JL (2007) Aging in adipocytes: potential impact of inherent, depot-specific mechanisms. *Exp. Gerontol.* **42**, 463–471.
- Cartwright M, Tchkonja T, Lenburg M, Pirtskhalava T, Cartwright A, Lopez MMA, Frampton G, Kirkland JL (2010) Aging, fat depot origin, and fat cell progenitor expression profiles: setting the stage for altered fat tissue function. *J. Gerontol.* **65**, 242–251.
- Caserta F, Tchkonja T, Civelek V, Prentki M, Brown NF, McGarry JD, Forse RA, Corkey BE, Hamilton JA, Kirkland JL (2001) Fat depot origin affects fatty acid handling in cultured rat and human preadipocytes. *Am. J. Physiol.* **280**, E238–E247.
- Chang GR, Chiu YS, Wu YY, Chen WH, Liao JW, Chao TH, Mao FC (2009) Rapamycin protects against high fat diet-induced obesity in C57BL/6J mice. *J. Pharmacol. Sci.* **109**, 496–503.
- Charalambous C, Virrey J, Kardosh A, Jabbour MN, Qazi-Abdullah L, Pen L, Zidovetzki R, Schonthal AH, Chen TC, Hofman FM (2007). Glioma-associated endothelial cells show evidence of replicative senescence. *Exp. Cell Res.* **313**, 1192–1202.
- Charriere G, Cousin B, Arnaud E, Andre M, Bacou F, Penicaud L, Casteilla L (2003) Preadipocyte conversion to macrophage. *J. Biol. Chem.* **278**, 9850–9855.
- Charriere GM, Cousin B, Arnaud E, Saillan-Barreau C, Andre M, Massoudi A, Dani C, Penicaud L, Casteilla L (2006) Macrophage characteristics of stem cells revealed by transcriptome profiling. *Exp. Cell Res.* **312**, 3205–3214.
- Chiu CH, Lin WD, Huang SY, Lee YH (2004) Effect of a C/EBP gene replacement on mitochondrial biogenesis in fat cells. *Genes Dev.* **18**, 1970–1975.
- Choi J, Shendrik I, Peacocke M, Peehl D, Buttyan R, Ikeguchi EF, Katz AE, Benson MC (2000) Expression of senescence-associated beta-galactosidase in enlarged prostates from men with benign prostatic hyperplasia. *Urology* **56**, 160–166.
- Chung S, Lapoint K, Martinez K, Kennedy A, Boysen Sandberg M, McIntosh MK (2006) Preadipocytes mediate lipopolysaccharide-

- induced inflammation and insulin resistance in primary cultures of newly differentiated human adipocytes. *Endocrinology* **147**, 5340–5351.
- Cinti S, Mitchell G, Barbatelli G, Murano I, Ceresi E, Faloia E, Wang S, Fortier M, Greenberg AS, Obin MS (2005) Adipocyte death defines macrophage localization and function in adipose tissue of obese mice and humans. *J. Lipid Res.* **46**, 2347–2355.
- Clarke SL, Robinson CE, Gimble JM (1997) CAAT/enhancer binding proteins directly modulate transcription from the peroxisome proliferator-activated receptor gamma 2 promoter. *Biochem. Biophys. Res. Commun.* **240**, 99–103.
- Colditz GA, Willett WC, Rotnitzky A, Manson JE (1995) Weight gain as a risk factor for clinical diabetes mellitus in women. *Ann. Intern. Med.* **122**, 481–486.
- Coppé JP, Patil C, Rodier F, Sun Y, Muñoz DP, Goldstein J, Nelson PS, Desprez PY, Campisi J (2008) Senescence-associated secretory phenotypes reveal cell-nonautonomous functions of oncogenic RAS and the p53 tumor suppressor. *PLoS Biol.* **6**, 2853–2868.
- Cousin B, Munoz O, Andre M, Fontanilles AM, Dani C, Cousin JL, Laharrague P, Castella L, Penicaud L (1999) A role for preadipocytes as macrophage-like cells. *FASEB J.* **13**, 305–312.
- Crossno JT, Majka SM, Grazia T, Gill RG, Klemm DJ (2006) Rosiglitazone promotes development of a novel adipocyte population from bone marrow-derived circulating progenitor cells. *J. Clin. Invest.* **116**, 3220–3228.
- Curat CA, Miranville A, Sengenès C, Diehl M, Tonus C, Busse R, Bouloumie A (2004) From blood monocytes to adipose tissue-resident macrophages. *Diabetes* **53**, 1285–1292.
- Cypess AM, Lehman S, Williams G, Tal I, Rodman D, Goldfine AB, Kuo FC, Palmer EL, Tseng YH, Doria A, Kolodny GM, Kahn CR (2009) Identification and importance of brown adipose tissue in adult humans. *N. Engl. J. Med.* **360**, 1509–1517.
- Das M, Gabriely I, Barzilai N (2004) Caloric restriction, body fat and ageing in experimental models. *Obes. Rev.* **5**, 13–19.
- De Pergola G, Pannaciuoli N (2002) Coagulation and fibrinolysis abnormalities in obesity. *J. Endocrinol. Invest.* **25**, 899–904.
- DeFronzo RA (2004) Dysfunctional fat cells, lipotoxicity and type 2 diabetes. *Int. J. Clin. Pract.* **2004**, 9–21.
- Denke MA, Sempos CT, Grundy SM (1993) Excess body weight. An underrecognized contributor to high blood cholesterol levels in white American men. *Arch. Intern. Med.* **153**, 1093–1103.
- Denke MA, Sempos CT, Grundy SM (1994) Excess body weight. An under-recognized contributor to dyslipidemia in white American women. *Arch. Intern. Med.* **154**, 401–410.
- Djian P, Roncari DAK, Hollenberg CH (1983) Influence of anatomic site and age on the replication and differentiation of rat adipocyte precursors in culture. *J. Clin. Invest.* **72**, 1200–1208.
- Dubois SG, Heilbronn LK, Smith SR, Albu JB, Kelley DE, Ravussin E (2006) Decreased expression of adipogenic genes in obese subjects with type 2 diabetes. *Obesity* **14**, 1543–1552.
- Einstein FH, Atzmon G, Yang XM, Ma XH, Rincon M, Rudin E, Muzumdar R, Barzilai N (2005) Differential responses of visceral and subcutaneous fat depots to nutrients. *Diabetes* **54**, 672–678.
- El Jack AK, Hamm JK, Pilch PF, Farmer SR (1999) Reconstitution of insulin-sensitive glucose transport in fibroblasts requires expression of both PPARγ and C/EBPα. *J. Biol. Chem.* **274**, 7946–7951.
- Fain JN, Taguele BM, Cheema P, Madan AK, Tichansky DS (2009) Release of 12 adipokines by adipose tissue, nonfat cells, and fat cells from obese women. *Obesity (Silver Spring)* **18**, 890–896.
- Farmer SR (2005) Regulation of PPARγ activity during adipogenesis. *Int. J. Obes.* **29**(Suppl. 1), S13–S16.
- Ferri C, Desideri G, Valenti M, Bellini C, Pasin M, Santucci A, De Mattia G (1999) Early upregulation of endothelial adhesion molecules in obese hypertensive men. *Hypertension* **34**, 568–573.
- Feuerer M, Herrero L, Cipolletta D, Naaz A, Wong J, Nayer A, Lee J, Goldfine AB, Benoist C, Shoelson S, Mathis D (2009) Lean, but not obese, fat is enriched for a unique population of regulatory T cells that affect metabolic parameters. *Nat. Med.* **15**, 930–939.
- Freund A, Orjalo AV, Desprez PY, Campisi J (2010) Inflammatory networks during cellular senescence: causes and consequences. *Trends Mol. Med.* **16**, 238–246.
- Fried S, Kral J (1987) Sex differences in regional distribution of fat cell size and lipoprotein lipase activity in morbidly obese patients. *Int. J. Obes.* **11**, 129–140.
- Fried SK, Bunkin DA, Greenberg AS (1998) Omental and subcutaneous adipose tissues of obese subjects release interleukin-6: depot difference and regulation by glucocorticoid. *J. Clin. Endocrinol. Metab.* **83**, 847–850.
- Gabalidon AM, McDonald RB, Horwitz BA (1998) Effects of age, gender, and senescence on beta-adrenergic responses of isolated F344 rat brown adipocytes in vitro. *Am. J. Physiol.* **274**, E726–E736.
- Gabalidon AM, Gavel DA, Hamilton JS, McDonald RB, Horwitz BA (2003) Norepinephrine release in brown adipose tissue remains robust in cold-exposed senescent Fischer 344 rats. *Am. J. Physiol. Regul. Integr. Comp. Physiol.* **285**, R91–R98.
- Gabriely I, Ma XH, Yang XM, Atzmon G, Rajala MW, Berg AH, Scherer PE, Rossetti L, Barzilai N (2002) Removal of visceral fat prevents insulin resistance and glucose intolerance of aging: an adipokine-mediated process? *Diabetes* **51**, 2951–2958.
- Garg A, Agarwal AK (2009) Lipodystrophies: disorders of adipose tissue biology. *Biochim. Biophys. Acta* **1791**, 507–513.
- Gregerman RI (1994) Aging and hormone sensitive lipolysis: reconciling the literature. *J. Gerontol.* **49**, B135–B139.
- Gross K, Karagiannides I, Thomou T, Koon HW, Bowe C, Kim H, Giorgadze N, Tchkonja T, Pirtskhalava T, Kirkland JL, Pothoulakis C (2009) Substance P promotes expansion of human mesenteric preadipocytes through proliferative and antiapoptotic pathways. *Am. J. Physiol. Gastrointest. Liver Physiol.* **296**, G1012–G1019.
- Guo SS, Zeller C, Chumlea WC, Siervogel RM (1999) Aging, body composition, and lifestyle: the Fels Longitudinal Study. *Am. J. Clin. Nutr.* **70**, 405–411.
- Guo W, Pirtskhalava T, Tchkonja T, Xie W, Thomou T, Han J, Wang T, Wong S, Cartwright A, Hegardt FG, Corkey BE, Kirkland JL (2007) Aging results in paradoxical susceptibility of fat cell progenitors to lipotoxicity. *Am. J. Physiol.* **292**, E1041–E1051.
- Gustafson B, Gogg S, Hedjazifar S, Jenndahl L, Hammarstedt A, Smith U (2009) Inflammation and impaired adipogenesis in hypertrophic obesity in man. *Am. J. Physiol. Endocrinol. Metab.* July 21 (Epub ahead of print).
- Hamm JK, Park BH, Farmer SR (2001) A role for C/EBPα in regulating peroxisome proliferator-activated receptor activity during adipogenesis in 3T3-L1 preadipocytes. *J. Biol. Chem.* **276**, 18464–18471.
- van Harmelen V, Skurk T, Rohrig K, Lee YM, Halbleib M, Aprath-Husmann I, Hauner H (2003) Effect of BMI and age on adipose tissue cellularity and differentiation capacity in women. *Int. J. Obes. Relat. Metab. Disord.* **27**, 889–895.
- Harris TB, Ferrucci L, Tracy RP, Corti MC, Wacholder S, Ettinger Jr WH, Heimovitz H, Cohen HJ, Wallace R (1999) Associations of elevated interleukin-6 and C-reactive protein levels with mortality in the elderly. *Am. J. Med.* **106**, 506–512.
- Harrison DE, Strong R, Sharp ZD, Nelson JF, Astle CM, Flurkey K, Nadon NL, Wilkinson JE, Frenkel K, Carter CS, Pahor M, Javors MA, Fernandez E, Miller RA (2009) Rapamycin fed late in life

- extends lifespan in genetically heterogeneous mice. *Nature* **460**, 392–395.
- Hayflick L, Moorehead P (1961) The serial cultivation of human diploid strains. *Exp. Cell Res.* **25**, 585–621.
- Higami Y, Barger JL, Page GP, Allison DB, Smith SR, Prolla TA, Weindruch R (2006) Energy restriction lowers the expression of genes linked to inflammation, the cytoskeleton, the extracellular matrix, and angiogenesis in mouse adipose tissue. *J. Nutr.* **136**, 343–352.
- Hollenberg AN, Susulic VS, Madura JP, Zhang B, Moller DE, Tontonoz P, Sarraf P, Spiegelman BM, Lowell BB (1997) Functional antagonism between CCAAT/enhancer binding protein- α and peroxisome proliferator-activated receptor- γ on the leptin promoter. *J. Biol. Chem.* **272**, 5283–5290.
- Hong KM, Burdick MD, Phillips RJ, Heber D, Stier RM (2005) Characterization of human fibrocytes as circulating adipocyte progenitors and the formation of human adipose tissue in SCID mice. *FASEB J.* **19**, 2029–2031.
- Hotamisligil GS, Spiegelman BM (1994) Tumor necrosis factor α : a key component of the obesity-diabetes link. *Diabetes* **43**, 1271–1278.
- Hotta K, Bodkin NL, Gustafson TA, Yoshioka S, Ortmeyer HK, Hansen BC (1999) Age-related adipose tissue mRNA expression of ADD1/SREBP1, PPAR γ , lipoprotein lipase, and GLUT4 glucose transporter in rhesus monkeys. *J. Gerontol.* **54A**, B183–B188.
- Hu E, Tontonoz P, Spiegelman BM (1995) Transdifferentiation of myoblasts by the adipogenic transcription factors PPAR γ and C/EBP α . *Proc. Natl Acad. Sci. USA* **92**, 9856–9860.
- Huffman DM, Barzilai N (2009) Role of visceral adipose tissue in aging. *Biochim. Biophys. Acta* **1790**, 1117–1123.
- Hughes VA, Roubenoff R, Wood M, Frontera WR, Evans WJ, Fiararone Singh MA (2004) Anthropometric assessment of 10-y changes in body composition in the elderly. *Am. J. Clin. Nutr.* **80**, 475–482.
- Jerschow E, Anwar S, Barzilai N, Rosenstreich D (2007) Macrophages accumulation in visceral and subcutaneous adipose tissue correlates with age. *J. Allergy Clin. Immunol.* **119**(Suppl. 1), S179.
- Jeyapalan JC, Sedivy JM (2008) Cellular senescence and organismal aging. *Mech. Ageing Dev.* **129**, 467–474.
- Jilka RL, Weinstein RS, Takahashi K, Parfitt AM, Manolagas SC (1996) Linkage of decreased bone mass with impaired osteoblastogenesis in a murine model of accelerated senescence. *J. Clin. Invest.* **97**, 1732–1740.
- Karagiannides I, Tchkonia T, Dobson DE, Steppan CM, Cummins P, Chan G, Salvatori K, Hadzopoulou-Cladaras M, Kirkland JL (2001) Altered expression of C/EBP family members results in decreased adipogenesis with aging. *Am. J. Physiol.* **280**, R1772–R1780.
- Karagiannides I, Kokkotou E, Tansky M, Tchkonia T, Giorgadze N, O'Brien M, Leeman SE, Kirkland JL, Pothoulakis C (2006a) Induction of colitis causes inflammatory responses in fat depots: evidence for substance P pathways in human mesenteric preadipocytes. *Proc. Natl Acad. Sci. USA* **103**, 5207–5212.
- Karagiannides I, Thomou T, Tchkonia T, Pirtskhalava T, Kypreos KE, Cartwright A, Dalagiorgou G, Lash TL, Farmer SR, Timchenko NA, Kirkland JL (2006b) Increased CUG triplet repeat binding protein-1 predisposes to impaired adipogenesis with aging. *J. Biol. Chem.* **281**, 23025–23033.
- Keyes WM, Wu Y, Vogel H, Guo X, Lowe SW, Mills AA (2006) p63 deficiency activates a program of cellular senescence and leads to accelerated aging. *Genes Dev.* **19**, 1986–1999.
- Kim JY, van de Wall E, Laplante M, Azzara A, Trujillo ME, Hofmann SM, Schraw T, Durand JL, Li H, Li G, Jelicks LA, Mehler MF, Hui DY, Deshaies Y, Shulman GI, Schwartz GJ, Scherer PE (2007) Obesity-associated improvements in metabolic profile through expansion of adipose tissue. *J. Clin. Invest.* **117**, 2621–2637.
- Kintscher U, Hartge M, Hess K, Forst-Ludwig A, Clemenz M, Wabitsch M, Fischer-Posovszky P, Barth TF, Dragun D, Skurk T, Hauer H, Bluher M, Unger T, Wolf AM, Knippschild U, Hombach V, Marx N (2008) T-lymphocyte infiltration in visceral adipose tissue: a primary event in adipose tissue inflammation and the development of obesity-mediated insulin resistance. *Arterioscler. Thromb. Vasc. Biol.* **28**, 1304–1310.
- Kirkland JL, Dax EM (1984) Adipose hormone responsiveness and aging in the rat. *J. Am. Geriatr. Soc.* **32**, 219–228.
- Kirkland JL, Dobson DE (1997) Preadipocyte function and aging: links between age-related changes in cell dynamics and altered fat cell function. *J. Am. Geriatr. Soc.* **45**, 959–967.
- Kirkland JL, Hollenberg CH (1998) Inhibitors of preadipocyte replication: opportunities for the treatment of obesity. *Prog. Mol. Subcell. Biol.* **22**, 177–195.
- Kirkland JL, Hollenberg CH, Gillon WS (1990) Age, anatomic site, and the replication and differentiation of adipocyte precursors. *Am. J. Physiol.* **258**, C206–C210.
- Kirkland JL, Hollenberg CH, Gillon WS (1993) Ageing, differentiation, and gene expression in rat epididymal preadipocytes. *Biochem. Cell Biol.* **71**, 556–561.
- Kirkland JL, Hollenberg CH, Kindler S, Gillon WS (1994) Effects of age and anatomic site on preadipocyte number in rat fat depots. *J. Gerontol.* **49**, B31–B35.
- Kirkland JL, Cummins P, Steppan C, Dobson DE, Cladaras MH (1997) Decreasing preadipocyte differentiation capacity with aging is associated with blunted expression of the transcription factor, CCAAT enhancer binding protein α . *Obes. Res.* **5**(Suppl. 1), 22S.
- Kirkland JL, Tchkonia T, Pirtskhalava T, Han J, Karagiannides I (2002) Adipogenesis and aging: does aging make fat go MAD? *Exp. Gerontol.* **37**, 757–767.
- Kirkland JL, Tchkonia T, Giorgadze N, Pirtskhalava T (2003) Adipose tissue as an endocrine organ: regional differences in adipocyte endocrine function. *Prog. Obes. Res.* **9**, 87–95.
- Klein S, Fontana L, Young VL, Coggan AR, Kilo C, Patterson BW, Mohammed BS (2004) Absence of an effect of liposuction on insulin action and risk factors for coronary heart disease. *N. Engl. J. Med.* **350**, 2549–2557.
- Koster A, Stenholm S, Alley DE, Kim LJ, Simonsick EM, Kanaya AM, Visser M, Houston DK, Nicklas BJ, Tyllavsky FA, Satterfield S, Goodpaster BH, Ferrucci L, Harris TB (2010) Body fat distribution and inflammation among obese older adults with and without metabolic syndrome. *Obesity (Silver Spring)* Apr 15 (Epub ahead of print).
- Kotani K, Tokunaga K, Fujioka S, Kobatake T, Keno Y, Yoshida S, Shimomura I, Tarui S, Matsuzawa Y (1994) Sexual dimorphism of age-related changes in whole-body fat distribution in the obese. *Int. J. Obes. Relat. Metab. Disord.* **18**, 207–212.
- Koutsari C, Ali AH, Nair KS, Rizza RA, O'Brien P, Khosla S, Jensen MD (2009) Fatty acid metabolism in the elderly: effects of dehydroepiandrosterone and testosterone replacement in hormonally deficient men and women. *J. Clin. Endocrinol. Metab.* **94**, 3414–3423.
- Kralisch S, Weise S, Sommer G, Lipfert J, Lossner U, Bluher M, Stumvoll M, Fasshauer M (2009) Interleukin-1 β induces the novel adipokine chemerin in adipocytes in vitro. *Regul. Pept.* **154**, 102–106.
- Krishnamurthy J, Torrice C, Ramsey MR, Kovalev GI, Al-Regaiey K, Su L, Sharpless NE (2004) Ink4a/Arf expression is a biomarker of aging. *J. Clin. Invest.* **114**, 1299–1307.
- Krtolica A, Campisi J (2002) Cancer and aging: a model for the cancer promoting effects of the aging stroma. *Int. J. Cell Biol.* **34**, 1401–1414.

- Kuilman T, Peeper DS (2009) Senescence-messaging secretome: SMS-ing cellular stress. *Nat. Rev. Cancer* **9**, 81–94.
- Kuilman T, Michaloglou C, Vredeveld LC, Douma S, van Doorn R, Desmet CJ, Aarden LA, Mooi WJ, Peeper DS (2008) Oncogene-induced senescence relayed by an interleukin-dependent inflammatory network. *Cell* **133**, 958–961.
- Kuk JL, Saunders TJ, Davidson LE, Ross R (2009) Age-related changes in total and regional fat distribution. *Ageing Res. Rev.* **8**, 339–348.
- Kyle UG, Genton L, Hans D, Karsegard L, Slosman DO, Pichard C (2001) Age-related differences in fat-free mass, skeletal muscle, body cell mass and fat mass between 18 and 94 years. *Eur. J. Clin. Nutr.* **55**, 663–672.
- Lacasa D, Taleb S, Keophiphath M, Miranville A, Clement K (2007) Macrophage-secreted factors impair human adipogenesis: involvement of proinflammatory state in preadipocytes. *Endocrinology* **148**, 868–877.
- Lean ME (2000) Pathophysiology of obesity. *Proc. Nutr. Soc.* **59**, 331–336.
- Lelliott C, Vidal-Puig AJ (2004) Lipotoxicity, an imbalance between lipogenesis de novo and fatty acid oxidation. *Int. J. Obes. Relat. Metab. Disord.* **28**(Suppl. 4), S22–S28.
- Lim S, Yoon JW, Choi SH, Park YJ, Lee JJ, Park JH, Lee SB, Kim KW, Lim JY, Kim YB, Park KS, Lee HK, Cho SI, Jang HC (2010) Combined impact of adiponectin and retinol-binding protein 4 on metabolic syndrome in elderly people: the Korean Longitudinal Study on Health and Aging. *Obesity (Silver Spring)* **18**, 826–832.
- Lin FT, Lane MD (1994) CCAAT/enhancer binding protein α is sufficient to initiate the 3T3-L1 adipocyte differentiation program. *Proc. Natl Acad. Sci. USA* **91**, 8757–8761.
- Lin Y, Lee H, Berg AH, Listani MP, Shapiro L, Scherer PE (2000) LPS activated TLR-4 receptor induces the synthesis of the closely related receptor TLR-2 in adipocytes. *J. Biol. Chem.* **275**, 24255–24263.
- Listenberger LL, Han H, Lewis SE, Cases S, Farese RV, Ory DS (2003) Triglyceride accumulation protects against fatty acid-induced lipotoxicity. *Proc. Natl Acad. Sci. USA* **100**, 3077–3082.
- Liu J, Divoux A, Sun J, Zhang J, Clement K, Glickman JN, Sukhova GK, Wolters PJ, Du J, Gorgun CZ, Doria A, Libby P, Blumberg RS, Kahn BB, Hotamisligil GS, Shi GP (2009) Genetic deficiency and pharmacological stabilization of mast cells reduce diet-induced obesity and diabetes in mice. *Nat. Med.* **15**, 940–945.
- Loffreda S, Yang SQ, Lin HZ, Karp CL, Brengman ML, Wang DJ, Klein AS, Bulkley GB, Bao C, Noble PW, Lane MD, Diehl AM (1998) Leptin regulates proinflammatory immune responses. *FASEB J.* **12**, 57–65.
- Lowell BB (1999) PPAR γ : an essential regulator of adipogenesis and modulator of fat cell function. *Cell* **99**, 239–242.
- Lumeng CN, Maillard I, Salliet AR (2009) T-ing up inflammation in fat. *Nat. Med.* **15**, 846–847.
- Lutz W, Sanderson W, Scherbov S (2008) The coming acceleration of global population ageing. *Nature* **451**, 716–719.
- Mack I, BelAiba RS, Djordjevic T, Grolach A, Hauner H, Bader BL (2009) Functional analyses reveal the greater potency of preadipocytes compared with adipocytes as endothelial cell activator under normoxia, hypoxia, and TNF α exposure. *Am. J. Physiol. Endocrinol. Metab.* **297**, E735–E748.
- Martin GM (2009) Epigenetic gambling and epigenetic drift as an antagonistic pleiotropic mechanism of aging. *Ageing Cell* **8**, 761–764.
- Martin-Ruiz C, Saretzki G, Petrie J, Ladhoff J, Jeyapalan J, Wei W, Sedivy J, von Zglinicki T (2004) Stochastic variation in telomere shortening rate causes heterogeneity of human fibroblast replicative lifespan. *J. Biol. Chem.* **279**, 17826–17833.
- Masoro EJ (2006) Caloric restriction and aging: controversial issues. *J. Gerontol. A Biol. Sci. Med. Sci.* **61**, 14–19.
- Matsuzawa Y, Shimomura I, Nakamura T, Keno Y, Kotani K, Tokunaga K (1995) Pathophysiology and pathogenesis of visceral fat obesity. *Obes. Res.* **3**(Suppl. 2), 187S–194S.
- McDonald RB, Horwitz BA (1999) Brown adipose tissue thermogenesis during aging and senescence. *J. Bioenerg. Biomembr.* **31**, 507–516.
- Meunier P, Aaron J, Edouard C, Vignon G (1971) Osteoporosis and the replacement of cell populations of the marrow by adipose tissue. A quantitative study of 84 iliac bone biopsies. *Clin. Orthop. Relat. Res.* **80**, 147–154.
- Miard S, Picard F (2008) Obesity and aging have divergent genomic fingerprints. *Int. J. Obes. (Lond.)* **32**, 1873–1874.
- Mimura T, Joyce NC (2006) Replication competence and senescence in central and peripheral human corneal endothelium. *Invest. Ophthalmol. Vis. Sci.* **47**, 1387–1396.
- Minamino T, Orimo M, Shimizu I, Kunieda T, Yokoyama M, Ito T, Nojima A, Nabetani A, Oike Y, Matsubara H, Ishikawa F, Komuro I (2009) A crucial role for adipose tissue p53 in the regulation of insulin resistance. *Nat. Med.* **15**, 1082–1087.
- Morin CL, Pagliassotti MJ, Windmiller D, Eckel RH (1997) Adipose tissue-derived tumor necrosis factor- α activity is elevated in older rats. *J. Gerontol.* **52A**, B190–B195.
- Morley JE (2004) The metabolic syndrome and aging. *J. Gerontol. A Biol. Sci. Med. Sci.* **59**, 139–142.
- Mu XC, Higgins PJ (1995) Differential growth state-dependent regulation of plasminogen activator inhibitor type-1 expression in senescent IMR-90 human diploid fibroblasts. *J. Cell. Physiol.* **165**, 647–657.
- Muzumdar R, Allison DB, Huffman DM, Ma X, Atzmon G, Einstein FH, Fishman S, Podaval AD, McVei T, Keith SW, Barzilai N (2008) Visceral adipose tissue modulates mammalian longevity. *Ageing Cell* **7**, 438–440.
- Nadler ST, Stoehr JP, Schueler KL, Tanimoto G, Yandell BS, Attie AD (2000) The expression of adipogenic genes is decreased in obesity and diabetes mellitus. *Proc. Natl Acad. Sci. USA* **97**, 11371–11376.
- Nair S, Lee YH, Rousseau E, Cam M, Tataranni PA, Baier LJ, Bogardus C, Permana PA (2005) Increased expression of inflammation-related genes in cultured preadipocytes/stromal vascular cells from obese compared with non-obese Pima Indians. *Diabetologia* **48**, 1784–1788.
- Narita M, Lowe SW (2005) Senescence comes of age. *Nat. Med.* **11**, 920–922.
- Narita M, Nunez S, Heard E, Narita M, Lin AW, Hearn SA, Spector DL, Hannon GJ, Lowe SW (2003) Rb-mediated heterochromatin formation and silencing of E2F target genes during cellular senescence. *Cell* **113**, 703–716.
- Nishimura S, Manabe I, Nagasaki M, Eto K, Yamashita H, Ohsugi M, Otsu M, Hara K, Ueki K, Sugiura S, Yoshimura K, Kadowaki T, Nagai R (2009) CD8 $^{+}$ effector T cells contribute to macrophage recruitment and adipose tissue inflammation in obesity. *Nat. Med.* **15**, 914–920.
- Noer A, Lindeman LC, Collas P (2009) Histone H3 modifications associated with differentiation and long-term culture of mesenchymal adipose stem cells. *Stem Cells Dev.* **18**, 725–736.
- Palmer AJ, Chung MY, List EO, Walker J, Okada S, Kopchick JJ, Berryman DE (2009) Age-related changes in body composition of bovine growth hormone transgenic mice. *Endocrinology* **150**, 1353–1360.
- Parrinello S, Coppe JP, Krtolica A, Campisi J (2005) Stromal-epithelial interactions in aging and cancer: senescent fibroblasts alter epithelial cell differentiation. *J. Cell Sci.* **118**, 485–496.

- Passos JF, Nelson G, Wang C, Richter T, Simillion C, Proctor CJ, Miwa S, Olijslagers S, Hallinan J, Wipat A, Saretzki G, Rudolph KL, Kirkwood TB, von Zglinicki T (2010) Feedback between p21 and reactive oxygen production is necessary for cell senescence. *Mol. Syst. Biol.* **6**, 347.
- Passos JF, Saretzki G, Ahmed S, Nelson G, Richter T, Peters H, Wappler I, Birkett M, Harold G, Schaeuble K, Birch-Machin M, Kirkwood T, von Zglinicki T (2007) Mitochondrial dysfunction accounts for the stochastic heterogeneity in telomere-dependent senescence. *PLoS Biol.* **5**, e110.
- Passos JF, Simillion C, Hallinan J, Wipat A, von Zglinicki T (2009) Cellular senescence: unravelling complexity. *Age (Dordr.)* July 18 (Epub ahead of print).
- Patsouris D, Li PP, Thapar D, Chapman J, Olefsky JM, Neels JG (2008) Ablation of CD11c-positive cells normalizes insulin sensitivity in obese insulin resistant animals. *Cell Metab.* **8**, 301–309.
- Permana PA, Nair S, Lee YH, Luczy-Bachman G, Vozarova de Courten B, Tataranni PA (2004) Subcutaneous abdominal preadipocyte differentiation in vitro inversely correlates with central obesity. *Am. J. Physiol.* **286**, E958–E962.
- Perreault M, Marette A (2001) Targeted disruption of inducible nitric oxide synthase protects against obesity-linked insulin resistance in muscle. *Nat. Med.* **7**, 1138–1143.
- Pischon T, Boeing H, Hoffmann K, Bergmann M, Schulze MB, Overvad K, van der Schouw YT, Spencer E, Moons KG, Tjonneland A, Halkjaer J, Jensen MK, Stegger J, Clavel-Chapelon F, Boutron-Ruault MC, Chajes V, Linseisen J, Kaaks R, Trichopoulou A, Trichopoulos D, Bamia C, Sieri S, Palli D, Tumino R, Vineis P, Panico S, Peeters PH, May AM, Bueno-de-Mesquita HB, van Duijnhoven FJ, Hallmans G, Weinehall L, Manjer J, Hedblad B, Lund E, Agudo A, Arriola L, Barricarte A, Navarro C, Martinez C, Quiros JR, Key T, Bingham S, Khaw KT, Boffetta P, Jenab M, Ferrari P, Riboli E (2008) General and abdominal adiposity and risk of death in Europe. *N. Engl. J. Med.* **359**, 2105–2120.
- Poehls J, Wassel CL, Harris TB, Havel PJ, Swarbrick MM, Cummings SR, Newman AB, Satterfield S, Kanaya AM (2009) Association of adiponectin with mortality in older adults: the Health, Aging, and Body Composition Study. *Diabetologia* **52**, 591–595.
- Rabkin SW (2007) Epicardial fat: properties, function and relationship to obesity. *Obes. Rev.* **8**, 253–261.
- Raguso CA, Kyle U, Kossovsky MP, Roynette C, Paoloni-Giacobino A, Hans D, Genton L, Pichard C (2006) A 3-year longitudinal study on body composition changes in the elderly: role of physical exercise. *Clin. Nutr.* **25**, 573–580.
- Rizza S, Gigli F, Galli A, Michelini B, Lauro D, Lauro R, Federici M (2010) Adiponectin isoforms in elderly patients with or without coronary artery disease. *J. Am. Geriatr. Soc.* **58**, 702–706.
- Rosen ED (2005) The transcriptional basis of adipocyte development. *Prost. Leu. Essential FA.* **73**, 31–34.
- Rosen CJ, Ackert-Bicknell C, Rodriguez JP, Pino AM (2009) Marrow fat and the bone microenvironment: developmental, functional, and pathological implications. *Crit. Rev. Eukaryot. Gene Expr.* **19**, 109–124.
- Saber M, Woods NB, de Luca C, Schenk S, Lu JC, Bandyopadhyay G, Verma IM, Olefsky JM (2009) Hematopoietic cell-specific deletion of toll-like receptor 4 ameliorates hepatic and adipose tissue insulin resistance in high-fat-fed mice. *Cell Metab.* **10**, 419–429.
- Samad F, Yamamoto K, Loskutoff DJ (1996) Distribution and regulation of plasminogen activator inhibitor-1 in murine adipose tissue in vivo. Induction by tumor necrosis factor-alpha and lipopolysaccharide. *J. Clin. Invest.* **97**, 37–46.
- Samad F, Yamamoto K, Pandey M, Loskutoff DJ (1997) Elevated expression of transforming growth factor-beta in adipose tissue from obese mice. *Mol. Med.* **3**, 37–48.
- Samad F, Pandey M, Loskutoff DJ (1998) Tissue factor gene expression in the adipose tissues of obese mice. *Proc. Natl Acad. Sci. USA* **95**, 7591–7596.
- Samaras K, Botelho NK, Chisholm DJ, Lord RV (2010) Subcutaneous and visceral adipose tissue gene expression of serum adipokines that predict type 2 diabetes. *Obesity (Silver Spring)* **18**, 884–889.
- Sartipy P, Loskutoff DJ (2003) Monocyte chemoattractant protein 1 in obesity and insulin resistance. *Proc. Natl Acad. Sci. USA* **100**, 7265–7270.
- Schipper BM, Marra KG, Zhang W, Donnenberg AD, Rubin JP (2008) Regional anatomic and age effects on cell function of human adipose-derived stem cells. *Ann. Plast. Surg.* **60**, 538–544.
- Sebastian C, Lloberas J, Celada A (2009). Molecular and cellular aspects of macrophage aging. In *Handbook on Immunosenescence*. (T Fulop, ed.). Dordrecht: Springer Science+Business Media B.V., pp. 919–945.
- Sekimoto H, Eipper-Mains J, Pond-Tor S, Boney CM (2005) (alpha)v(beta)3 integrins and Pyk2 mediate insulin-like growth factor I activation of Src and mitogen-activated protein kinase in 3T3-L1 cells. *Mol. Endocrinol.* **19**, 1859–1867.
- Selman C, Lingard S, Choudhury AI, Batterham RL, Claret M, Clements M, Ramadani F, Okkenhaug K, Schuster E, Blanc E, Piper MD, Al-Qassab H, Speakman JR, Carmignac D, Robinson IC, Thornton JM, Gems D, Partridge L, Withers DJ (2008) Evidence for life-span extension and delayed age-related biomarkers in insulin receptor substrate 1 null mice. *FASEB J.* **22**, 807–818.
- Selman C, Tullet JM, Wieser D, Irvine E, Lingard SJ, Choudhury AI, Claret M, Al-Qassab H, Carmignac D, Ramadani F, Woods A, Robinson IC, Schuster E, Batterham RL, Kozma SC, Thomas G, Carling D, Okkenhaug K, Thornton JM, Partridge L, Gems D, Withers DJ (2009) Ribosomal protein S6 kinase 1 signaling regulates mammalian life span. *Science* **326**, 140–144.
- Semple RK, Crowley VC, Sewter CP, Laudes M, Christodoulides C, Considine RV, Vidal-Puig A, O'Rahilly S (2004) Expression of the thermogenic nuclear hormone receptor coactivator PGC-1alpha is reduced in the adipose tissue of morbidly obese subjects. *Int. J. Obes. Relat. Metab. Disord.* **28**, 176–179.
- Sherr CJ, DePinho RA (2000) Cellular senescence: mitotic clock or culture shock? *Cell* **102**, 407–410.
- Shillabeer G, Forden JM, Russell JC, Lau DC (1990) Paradoxically slow preadipocyte replication and differentiation in corpulent rats. *Am. J. Physiol.* **258**, E368–E376.
- Silver AJ, Guillen CP, Kahl MJ, Morley JE (1993) Effect of aging on body fat. *J. Am. Geriatr. Soc.* **41**, 211–213.
- Slawik M, Vidal-Puig AJ (2006) Lipotoxicity, overnutrition and energy metabolism in aging. *Ageing Res. Rev.* **5**, 144–164.
- Sokolov MV, Dickey JS, Bonner WM, Sedelnikova OA (2007) gamma-H2AX in bystander cells: not just a radiation-triggered event, a cellular response to stress mediated by intercellular communication. *Cell Cycle* **6**, 2210–2212.
- Starr ME, Evers BM, Saito H (2009) Age-associated increase in cytokine production during systemic inflammation: adipose tissue as a major source of IL-6. *J. Gerontol. A Biol. Sci. Med. Sci.* **64**, 723–730.
- Stenholm S, Koster A, Alley DE, Visser M, Maggio M, Harris TB, Egan JM, Bandinelli S, Guralnik JM, Ferrucci L (2009) Adipocytokines and the metabolic syndrome among older persons with and without obesity – the InCHIANTI Study. *Clin. Endocrinol. (Oxf.)* Oct 31 (Epub ahead of print).

- Stout RD, Suttles J (2005) Immunosenescence and macrophage functional plasticity: dysregulation of macrophage function by age-associated microenvironmental changes. *Immunol. Rev.* **205**, 60–71.
- Strissel K, Stancheva Z, Miyoshi H, Perfield JW, Defuria J, Jick Z, Greenberg AS, Obin MS (2007) Adipocyte death, adipose tissue remodeling and obesity complications. *Diabetes* **56**, 2910–2918.
- Suganami T, Nishida J, Ogawa Y (2005) A paracrine loop between adipocytes and macrophages aggravates inflammatory changes: role of free fatty acids and tumor necrosis factor alpha. *Arterioscler. Thromb. Vasc. Biol.* **25**, 2062–2068.
- Takahashi K, Mizuarai S, Araki H, Mashiko S, Ishihara A, Kanatani A, Itadani H, Kotani H (2003) Adiposity elevates plasma MCP-1 levels leading to the increased CD11b-positive monocytes in mice. *J. Biol. Chem.* **278**, 46654–46660.
- Tang W, Zeve D, Suh JM, Bosnakovski D, Kyba M, Hammer RE, Tallquist MD, Graff JM (2008) White fat progenitor cells reside in the adipose vasculature. *Science* **322**, 583–586.
- Taylor-Jones JM, McGehee RE, Rando TA, Lecka-Czernik B, Lipschitz D, Peterson CA (2002) Activation of an adipogenic program in adult skeletal muscle myoblasts with age. *Mech. Ageing Dev.* **123**, 649–661.
- Tchkonina T, Karagiannides I, Forse RA, Kirkland JL (2001) Different fat depots are distinct mini-organs. *Curr. Opin. Endocrinol. Diabetes* **8**, 227–234.
- Tchkonina T, Giorgadze N, Pirtskhalava T, Tchoukalova Y, Karagiannides I, Forse RA, DePonte M, Stevenson M, Guo W, Han J, Waloga G, Lash TL, Jensen MD, Kirkland JL (2002) Fat depot origin affects adipogenesis in primary cultured and cloned human preadipocytes. *Am. J. Physiol.* **282**, R1286–R1296.
- Tchkonina T, Tchoukalova YD, Giorgadze N, Pirtskhalava T, Karagiannides I, Forse RA, Koo A, Stevenson M, Chinnappan D, Cartwright A, Jensen MD, Kirkland JL (2005) Abundance of two human preadipocyte subtypes with distinct capacities for replication, adipogenesis, and apoptosis varies among fat depots. *Am. J. Physiol.* **288**, E267–E277.
- Tchkonina T, Corkey BE, Kirkland JL (2006a) Current views of the fat cell as an endocrine cell: lipotoxicity. *Endocr. Updates* **26**, 105–118.
- Tchkonina T, Giorgadze N, Pirtskhalava T, Thomou T, DePonte M, Koo A, Forse RA, Chinnappan D, Carmen Martin-Ruiz C, von Zglinicki T, Kirkland JL (2006b) Fat depot-specific characteristics are retained in strains derived from single human preadipocytes. *Diabetes* **55**, 2571–2578.
- Tchkonina T, Cartwright M, Wise B, Pirtskhalava T, Karagiannides I, Shpilman A, Beckerer D, Kirkland JL (2007a) Increased TNF α and CCAAT/enhancer binding protein homologous protein (CHOP) with aging predispose preadipocytes to resist adipogenesis. *Am. J. Physiol.* **293**, E1810–E1819.
- Tchkonina T, Lenburg M, Thomou T, Giorgadze N, Frampton G, Pirtskhalava T, Cartwright A, Cartwright M, Flanagan J, Karagiannides I, Gerry N, Forse RA, Tchoukalova Y, Jensen MD, Pothoulakis C, Kirkland JL (2007b) Identification of depot-specific human fat cell progenitors through distinct expression profiles and developmental gene patterns. *Am. J. Physiol.* **292**, E298–E307.
- Tchkonina T, Giorgadze N, Pirtskhalava T, Thomou T, Villaret A, Bouloumie A, von Zglinicki T, Kirkland JL (2009) Cellular senescence and inflammation in obesity. *Obesity* **17**(Suppl. 2), S57.
- Tchoukalova Y, Koutsari C, Jensen M (2007) Committed subcutaneous preadipocytes are reduced in human obesity. *Diabetologia* **50**, 151–157.
- Thomou T, Tchkonina T, Kirkland JL (2010) The cellular and molecular basis of functional differences among fat depots. In *Adipose Tissue in Health and Disease* (TA Leff, JG Granneman, eds). Weinheim, Germany: Wiley-VCH, pp. 21–47.
- Tran TT, Yamamoto Y, Gesta S, Kahn CR (2008) Beneficial effects of subcutaneous fat transplantation on metabolism. *Cell Metab.* **7**, 410–420.
- Turkenkopf IJ, Chow G, East-Palmer J, Greenwood MR, Johnson PR (1988) Regional and genotypic differences in stromal-vascular cells from obese and lean Zucker rats. *Int. J. Obes. Relat. Metab. Disord.* **12**, 515–524.
- Um SH, Frigerio F, Watanabe M, Picard F, Joaquin M, Sticker M, Fumagalli S, Allegrini PR, Kozma SC, Auwerx J, Thomas G (2004) Absence of S6K1 protects against age- and diet-induced obesity while enhancing insulin sensitivity. *Nature* **431**, 200–205.
- Unger RH (2002) Lipotoxic diseases. *Annu. Rev. Med.* **53**, 319–336.
- Unger RH (2005) Longevity, lipotoxicity and leptin: the adipocyte defense against feasting and famine. *Biochimie* **87**, 57–64.
- Uranga AP, Levine J, Jensen M (2005) Isotope tracer measures of meal fatty acid metabolism: reproducibility and effects of the menstrual cycle. *Am. J. Physiol. Endocrinol. Metab.* **288**, E547–E555.
- Valle A, Guevara R, Garcia-Palmer FJ, Roca P, Oliver J (2008) Caloric restriction retards the age-related decline in mitochondrial function of brown adipose tissue. *Rejuvenation Res.* **11**, 597–604.
- Vasile E, Tomita Y, Brown LF, Kocher O, Dvorak HF (2001) Differential expression of thymosin beta-10 by early passage and senescent vascular endothelium is modulated by VPF/VEGF: evidence for senescent endothelial cells in vivo at sites of atherosclerosis. *FASEB J.* **15**, 458–466.
- Vgontzas AN, Papanicolaou DA, Bixler EO, Kales A, Tyson K, Chrousos GP (1997) Elevation of plasma cytokines in disorders of excessive daytime sleepiness: role of sleep disturbance and obesity. *J. Clin. Endocrinol. Metab.* **82**, 1313–1316.
- Visser M, Bouter LM, McQuillan GM, Wener MH, Harris TB (1999) Elevated C-reactive protein levels in overweight and obese adults. *J. Am. Med. Assoc.* **282**, 2131–2135.
- Visser M, Pahor M, Tylavsky F, Kritchevsky SB, Cauley JA, Newman AB, Blunt BA, Harris TB (2003) One- and two-year change in body composition as measured by DXA in a population-based cohort of older men and women. *J. Appl. Physiol.* **94**, 2368–2374.
- Vitseva OI, Tanriverdi K, Tchkonina TT, Kirkland JL, McDonnell ME, Apovian CM, Freedman J, Gokce N (2008) Inducible Toll-like receptor and NF-kappaB regulatory pathway expression in human adipose tissue. *Obesity (Silver Spring)* **16**, 932–937.
- Wang H, Kirkland JL, Hollenberg CH (1989) Varying capacities for replication of rat adipocyte precursor clones and adipose tissue growth. *J. Clin. Invest.* **83**, 1741–1746.
- Wang C, Jurk D, Maddick M, Nelson G, Martin-Ruiz C, von Zglinicki T (2009a) DNA damage response and cellular senescence in tissues of aging mice. *Aging Cell* **8**, 311–323.
- Wang CY, Kim HH, Hiroi Y, Sawada N, Salomone S, Benjamin LE, Walsh K, Moskowitz MA, Liao JK (2009b) Obesity increases vascular senescence and susceptibility to ischemic injury through chronic activation of Akt and mTOR. *Sci. Signal.* **2**, ra11.
- Wannamethee SG, Shaper AG, Lennon L, Whincup PH (2007) Decreased muscle mass and increased central adiposity are independently related to mortality in older men. *Am. J. Clin. Nutr.* **86**, 1339–1346.
- Weber RV, Buckley MC, Fried SK, Kral JG (2000) Subcutaneous lipectomy causes a metabolic syndrome in hamsters. *Am. J. Physiol.* **279**, R936–R943.
- Weisberg SP, McCann D, Desai M, Rosenbaum M, Leibel RL, Ferrante AW (2003) Obesity is associated with macrophage accumulation in adipose tissue. *J. Clin. Invest.* **112**, 1796–1808.
- Weyer C, Yudkin JS, Stehouwer CD, Schalkwijk CG, Pratley RE, Tata-ranni PA (2002) Humoral markers of inflammation and endothelial

- dysfunction in relation to adiposity and in vivo insulin action in Pima Indians. *Atherosclerosis* **161**, 233–242.
- Winer S, Chan Y, Paltser G, Truong D, Tsui H, Bahrami J, Dorfman R, Wang Y, Zielenski J, Mastronardi F, Maezawa Y, Drucker DJ, Engleman E, Winer D, Dosch HM (2009) Normalization of obesity-associated insulin resistance through immunotherapy. *Nat. Med.* **15**, 921–929.
- Wu Z, Xie Y, Bucher NLR, Farmer SR (1995) Conditional ectopic expression of C/EBP β in NIH-3T3 cells induces PPAR γ and stimulates adipogenesis. *Genes Dev.* **9**, 2350–2363.
- Wu Z, Bucher NLR, Farmer SR (1996) Induction of peroxisome proliferator-activated receptor γ during the conversion of 3T3 fibroblasts into adipocytes is mediated by C/EBP β , C/EBP δ and glucocorticoids. *Mol. Cell. Biol.* **16**, 4128–4136.
- Wu Z, Rosen ED, Brun R, Hauser S, Adelmant G, Troy AE, McKeon C, Darlington GJ, Spiegelman BM (1999) Cross-regulation of C/EBP α and PPAR γ controls the transcriptional pathway of adipogenesis and insulin sensitivity. *Mol. Cell* **3**, 151–158.
- Wu D, Ren Z, Pae M, Guo W, Cui X, Merrill AH, Meydani SN (2007) Aging up-regulates expression of inflammatory mediators in mouse adipose tissue. *J. Immunol.* **179**, 4829–4839.
- Xie W, Hamilton JA, Kirkland JL, Corkey BE, Guo W (2006) Oleate-induced formation of fat cells with impaired insulin sensitivity. *Lipids* **41**, 267–271.
- Xu H, Uysal KT, Becherer JD, Arner P, Hotamisligil GS (2002) Altered tumor necrosis factor- α (TNF- α) processing in adipocytes and increased expression of transmembrane TNF- α in obesity. *Diabetes* **51**, 1876–1883.
- Xu H, Barnes GT, Yang Q, Tna G, Yang D, Chou CJ, Sole J, Nichols A, Ross JS, Tartaglia LA, Chen H (2003) Chronic inflammation in fat plays a crucial role in the development of obesity-related insulin resistance. *J. Clin. Invest.* **112**, 1821–1830.
- Xue W, Zender L, Miething C, Dickins RA, Hernando E, Krizhanovsky V, Cordon-Cardo C, Lowe SW (2007) Senescence and tumour clearance is triggered by p53 restoration in murine liver carcinomas. *Nature* **445**, 656–660.
- Yamamoto Y, Gesta S, Lee KY, Tran TT, Saadatirad P, Kahn CR (2010) Adipose depots possess unique developmental gene signatures. *Obesity (Silver Spring)* **18**, 872–878.
- Yeh WC, Cao M, Classon M, McKnight SL (1995) Cascade regulation of terminal adipocyte differentiation by three members of the C/EBP family of leucine zipper proteins. *Genes Dev.* **9**, 168–181.
- Yki-Jarvinen H, Kiviluoto T, Nikkila EA (1986) Insulin binding and action in adipocytes in vitro in relation to insulin action *in vivo* in young and middle-aged subjects. *Acta Endocrinol.* **113**, 88–92.
- Yu BP, Masoro EJ, Murata I, Bertrand HA, Lynd FT (1982) Lifespan study of SPF Fischer 344 male rats fed *ad libitum* or restricted diets: longevity, growth lean body mass and disease. *J. Gerontol.* **37**, 130–141.
- Zhang Y, Herbert BS, Rajashekhar G, Ingram DA, Yoder MC, Claus M, Rehman J (2009) Premature senescence of highly proliferative endothelial progenitor cells is induced by tumor necrosis factor- α via the p38 mitogen-activated protein kinase pathway. *FASEB J.* **23**, 1358–1365.

Supporting Information

Additional supporting information may be found in the online version of this article:

Table S1 Research questions regarding cellular senescence and fat tissue

As a service to our authors and readers, this journal provides supporting information supplied by the authors. Such materials are peer-reviewed and may be re-organized for online delivery, but are not copy-edited or typeset. Technical support issues arising from supporting information (other than missing files) should be addressed to the authors.