

University of Groningen

No Effect of Dose Adjustment to the CYP2D6 Genotype in Patients With Severe Mental Illness

Koopmans, Anne B.; Vinkers, David J.; Poulina, Igmarr T.; Gelan, Petra J. A.; van Schaik, Ron H. N.; Hoek, Hans W.; van Harten, Peter N.

Published in:
Frontiers in Psychiatry

DOI:
[10.3389/fpsy.2018.00349](https://doi.org/10.3389/fpsy.2018.00349)

IMPORTANT NOTE: You are advised to consult the publisher's version (publisher's PDF) if you wish to cite from it. Please check the document version below.

Document Version
Publisher's PDF, also known as Version of record

Publication date:
2018

[Link to publication in University of Groningen/UMCG research database](#)

Citation for published version (APA):

Koopmans, A. B., Vinkers, D. J., Poulina, I. T., Gelan, P. J. A., van Schaik, R. H. N., Hoek, H. W., & van Harten, P. N. (2018). No Effect of Dose Adjustment to the CYP2D6 Genotype in Patients With Severe Mental Illness. *Frontiers in Psychiatry*, 9, [349]. <https://doi.org/10.3389/fpsy.2018.00349>

Copyright

Other than for strictly personal use, it is not permitted to download or to forward/distribute the text or part of it without the consent of the author(s) and/or copyright holder(s), unless the work is under an open content license (like Creative Commons).

Take-down policy

If you believe that this document breaches copyright please contact us providing details, and we will remove access to the work immediately and investigate your claim.

Downloaded from the University of Groningen/UMCG research database (Pure): <http://www.rug.nl/research/portal>. For technical reasons the number of authors shown on this cover page is limited to 10 maximum.



No Effect of Dose Adjustment to the CYP2D6 Genotype in Patients With Severe Mental Illness

Anne B. Koopmans^{1,2*}, David J. Vinkers², Igmarr T. Poulina¹, Petra J. A. Gelan³, Ron H. N. van Schaik⁴, Hans W. Hoek^{1,5,6} and Peter N. van Harten^{2,7}

¹ Parnassia Academy, Parnassia Psychiatric Institute, The Hague, Netherlands, ² School of Mental Health and Neuroscience, Maastricht University, Maastricht, Netherlands, ³ Klinika Capriles, Willemstad, Curaçao, ⁴ Department of Clinical Chemistry, Erasmus University Medical Center, Rotterdam, Netherlands, ⁵ Department of Psychiatry, University Medical Center Groningen, Groningen, Netherlands, ⁶ Department of Epidemiology, Mailman School of Public Health, Columbia University, New York, NY, United States, ⁷ Innova, Psychiatric Centre GGz Centraal, Amersfoort, Netherlands

Background: The CYP2D6 enzyme is involved in the metabolism of numerous psychopharmacological drugs. Guidelines recommend how to adjust the dose of medication based on the CYP2D6 genotype.

Aims: To evaluate the effect of dose adjustment to the CYP2D6 genotype and phenotype, in patients with severe mental illness (SMI) already receiving psychopharmacological treatment.

Methods: A total of 269 psychiatric patients (on the island Curaçao) receiving antipsychotic treatment were genotyped for CYP2D6. Of these, 45 patients were included for dose adjustment according to the clinical guideline of the Royal Dutch Association for the Advancement of Pharmacy, i.e., 17 CYP2D6 poor metabolizers, 26 intermediate metabolizers, and 2 ultrarapid metabolizers. These 45 patients were matched for age, gender, and type of medication with a control group of 41 patients who were CYP2D6 extensive metabolizers (i.e., with a normal CYP2D6 function). At baseline and at 4 months after dose adjustment, subjective experience, psychopathology, extrapyramidal side-effects, quality of life, and global functioning were assessed in these two groups.

Results: At baseline, there were no differences between the groups regarding the prescribed dosage of antipsychotics, the number of side-effects, psychiatric symptoms, global functioning, or quality of life. After dose adjustment, no significant improvement in these parameters was reported.

Conclusion: In psychiatric patients with SMI already receiving antipsychotic treatment, dose adjustment to the CYP2D6 genotype or phenotype according to the guidelines showed no beneficial effect. This suggests that dose adjustment guidelines are currently not applicable for patients already using antipsychotics.

ClinicalTrials.gov: Cost-effectiveness of CYP2D6 and CYP2C19 Genotyping in Psychiatric Patients in Curacao; Identifier: NCT02713672; <https://clinicaltrials.gov/ct2/show/NCT02713672?term=CYP2D6&rank=5>

Keywords: CYP2D6, severe mental illness (SMI), guidelines, dose adjustment, genotyping, psychopharmacology, personalized medicine

OPEN ACCESS

Edited by:

Mirko Manchia,
Università degli Studi di Cagliari, Italy

Reviewed by:

Alessio Squassina,
Università degli Studi di Cagliari, Italy
Scott Edwards,

LSU Health Sciences Center New
Orleans, United States

Paul Moser,
Cerbascience, France

*Correspondence:

Anne B. Koopmans
koopmansanne@gmail.com

Specialty section:

This article was submitted to
Psychopharmacology,
a section of the journal
Frontiers in Psychiatry

Received: 28 March 2018

Accepted: 10 July 2018

Published: 07 August 2018

Citation:

Koopmans AB, Vinkers DJ, Poulina IT,
Gelan PJA, van Schaik RHN,
Hoek HW and van Harten PN (2018)
No Effect of Dose Adjustment to the
CYP2D6 Genotype in Patients With
Severe Mental Illness.
Front. Psychiatry 9:349.
doi: 10.3389/fpsy.2018.00349

INTRODUCTION

The cytochrome P450 isozymes, in particular CYP2D6, is responsible for the biotransformation of many psychopharmacological drugs (1, 2). Substrates of CYP2D6 include first generation antipsychotics, selective serotonin receptor inhibitors and tricyclic antidepressants¹. Based on genetic variation, patients can be divided into poor metabolizers (PM), intermediate metabolizers (IM), extensive metabolizers (EM), and ultrarapid metabolizers (UM). The recommended dosages of psychopharmacological medication that are metabolized by this enzyme are based on the metabolism of the most common genotype, i.e., the EM type (i.e., a normal CYP2D6 function). However, because the plasma level of a drug is related to the genotype, the same dosage will probably lead to a higher plasma level in PMs and IMs, as compared to EMs, and to a lower plasma level in UMs as compared to EMs. The plasma level is often related to the effectiveness of the drug and the risk of dose-related side-effects (3–7). Also, when physicians prescribe a drug metabolized by CYP2D6 without taking into account the genotype, the hospital stay is longer (and the costs higher) in patients with a PM and UM profile (8).

Clinical guidelines recommend dose adjustment according to the CYP2D6 genotype (9–11). However, the current guidelines do not differentiate between patients that start vs. those that are already receiving psychopharmacological treatment. Patients with severe mental illness (SMI) are especially known to suffer from problems with adverse drug reactions, lack of medication effect, and new models of care are warranted (12–16). In a study in patients with SMI, more adverse drug events and higher costs were found in the extreme metabolizer groups (17). In a cost analysis study it was found that genotyping in patients with schizophrenia could lead to lower treatment costs (18).

Genotyping in patients with SMI could potentially individualize treatment, reduce side-effects in slower metabolizers and increase treatment effects in rapid metabolizers. Until now, it remains unclear whether routine CYP2D6 genotyping is efficacious in patients with SMI already undergoing psychopharmacological treatment and evidence of clinical utility of CYP2D6 genotyping in patients being prescribed antipsychotics is lacking (19–21). We hypothesized that dose adjustment of antipsychotics to the CYP2D6 genotype and phenotype would be beneficial regarding side-effects, psychiatric symptoms, quality of life, and/or global functioning. The aim of the present study was to evaluate the effect of dose adjustment to the CYP2D6 genotype and phenotype, in patients with SMI already receiving psychopharmacological treatment. The dose adjustment group consisted of patients with a PM, IM, or UM profile using antipsychotics metabolized by CYP2D6, whereas the control group consisted of patients with an EM geno-/phenotype. The effect of dose adjustment of the antipsychotics on psychopathological symptoms, side-effects, and well-being was evaluated.

¹Flockhart DA. P450 Drug Interaction Table (Division of Clinical Pharmacology, Indiana University). July 12, 2013. Available at: <http://medicine.iupui.edu/clinpharm/ddis/main-table/> (Accessed 2013).

METHODS

Patients

This study was performed on the Caribbean island, Curaçao: this is one of the western Leeward Antilles in the Caribbean with about 160,000 inhabitants². Patients were recruited via the *Klinika Capriles* (the psychiatric hospital on the island), the psychiatric ward of the local prison (FOBA), and the psychiatric outpatient clinic (*Psychiaters Maatschap Antillen*).

After being informed about the study procedures, all patients signed written informed consent. Inclusion criteria were: Antillean ethnicity (defined in line with the concepts used by the Central Office of Statistics in the Netherlands, as birth on the former Netherlands Antilles and birth of at least one parent on the former Netherlands Antilles); age ≥ 18 years; use of an antipsychotic or antidepressant drug; able and written informed consent. All participants in both groups received a token for 25 Netherlands Antillean Guilder (about US \$13) if they completed the study.

All DNA samples were genotyped July 2012 for CYP2D6 *1, *2, *3, *4, *5, *6, *7, *8, *9, *10, *17, *29, *41 and gene duplication in the Erasmus Medical Center (Rotterdam, the Netherlands) and grouped according to the predicted phenotype for CYP2D6 as described earlier (22).

Diagnoses, demographic information and information on psychiatric and somatic medication was derived from the electronic patient file. The following psychiatric drugs were considered to have a major dependence on the CYP2D6 enzyme for their elimination: amitriptyline, aripiprazole, atomoxetine, clomipramine, imipramine, haloperidol, nortriptyline, paroxetine, pimozone, risperidone, venlafaxine, and zuclopenthixol¹ (9, 10).

Based on the CYP2D6 genotype or phenotype, patients were selected who were recommended a dose adjustment of their psychopharmacological medication according to the guideline of the Royal Dutch Association for the Advancement of Pharmacy (updated until July 2013). In this guideline, recommendations were developed for 53 drugs based on a systematic review of the literature. In CYP2D6 PM, IM, or UM patients, using medication metabolized by CYP2D6, it is advised to switch to a drug that is not metabolized by CYP2D6. An alternative is to adjust the dosage with dose reductions of respectively 25–50% of the original dose in IMs and PMs (9, 10).

To increase the power of the present study, patients who were PM or IM based on inhibiting medication were also included in the dose adjustment group (23).

Patients using strong CYP2D6 inhibitors (bupropion, cinacalcet, fluoxetine, paroxetine, quinidine) according to Flockhart's interaction table, were classified as being PM¹ (23, 24).

The selected patients were matched for age, gender and type of medication with a control group of patients who were CYP2D6 extensive metabolizers.

²Central Bureau of Statistics Curaçao. Available at: <http://www.cbs.cw>. Accessed 2017.

All prescribed antipsychotics were calculated to a “defined daily dose” (DDD) as reported by the World Health Organization (WHO) (25). This is a unit of measurement and defined as the assumed average maintenance dose per day for a drug used for its main indication in adults. The total equivalent of the DDD was calculated for every patient. The study protocol was approved by the Institutional Review Board of Maastricht University (the Netherlands) and ethical approval to collect DNA samples was received according to local policies by the Institutional Review Board of the Klinika Capriles (Curaçao).

The study was registered in an international trial registry at <http://www.clinicaltrials.gov> (NCT02713672). All procedures were in accordance with the ethical standards of the Declaration of Helsinki 1975 (as revised in 1983).

Assessments

Each patient underwent a thorough assessment of psychopathology, subjective experience, extrapyramidal symptoms, quality of life, global functioning, and metabolic parameters at baseline (T0) (November–December 2014) and at 4 months after dose adjustment (T1) (April–June 2015). Information about drug and alcohol use was registered.

The severity of the patient’s psychopathology was assessed with the Brief Psychiatric Rating Scale (BPRS) (26). Extrapyramidal symptoms were assessed with the St. Hans Rating Scale (SHRS) (27). Akathisia was measured with the Barnes Rating Scale for drug-induced akathisia (BARS) (28, 29). Quality of life was assessed with the EQol 5-D (EQ 5-D) (30). Global functioning was assessed with the WHO Disability Assessment Schedule 2.0 36-item proxy-administered version (WHODAS 2.0) and was administered with a personal caregiver (31, 32); scores were recalculated to a standardized score. In all above-mentioned scales, higher scores indicate more severe symptoms. Subjective experience was measured with the Subjective Well-Being Under Neuroleptics Scale (SWN-20) (33). Scores were recalculated, with higher scores indicating a higher level of well-being. For patients who were unable to read Dutch, the questions were translated into Papiamentu (a local language). The investigator, a resident in psychiatry, was trained by professionals in scoring the SHRS, BARS and the WHODAS 2.0. Patients receiving depot medication were measured the same number of days after administration of the depot at T0 and at T1.

Secondary outcome measurements were metabolic parameters (blood pressure, body mass index (BMI), waist size, cholesterol, HDL, LDL, triglycerides, glucose, HbA1C, and prolactin). Also in 31 of the 60 patients receiving antipsychotics metabolized by CYP2D6 (dose adjustment group $n = 22$, control group $n = 9$), the plasma levels of antipsychotics were measured.

Procedures

After baseline measurements, another psychiatrist in training prescribed the dose adjustments. A standard procedure for dose adjustments was followed. Lowering the dose was done in steps according to a local protocol³ (34). Tranquilizing medication

with inhibitory activity was replaced by benzodiazepines. By removing the inhibiting medication, no further dose reduction was necessary in these patients. Complex cases were discussed with the research team during a regular meeting and individual dose adjustment plans were made.

Statistical Analysis

Analyses were performed with IBM SPSS statistics (version 22). Differences between groups were tested with a Chi-square test for dichotomous variables and an independent *t*-test for continuous variables. ANOVA was used to compare means between the geno-/phenotypes. Non-parametric tests were used for variables not normally distributed (i.e., SHRS, BARS, EQ 5-D). Differences at T1 that were present at T0 were corrected for in an ANCOVA model. The relation between geno-/pheno and DDD was investigated with Kendall’s tau. All tests were two-tailed. The significance level was set at $p < 0.05$. After Bonferroni correction, the significance level used was $p < 0.005$ (0.05/11).

To analyse all aspects of deterioration, psychiatric well-being was evaluated on (one of) three scored items: i.e., deterioration was defined as a specific report by caregivers or a physician, or a >5-point increase on the BPRS, or on the WHODAS 2.0.

A *post-hoc* power analysis showed that a 25% reduction of the psychiatric symptoms, or a 30% reduction of the symptoms measured by WHODAS 2.0, or a 75% reduction of the Parkinson symptoms, results in a power of 80% at a significance level of 0.05.

RESULTS

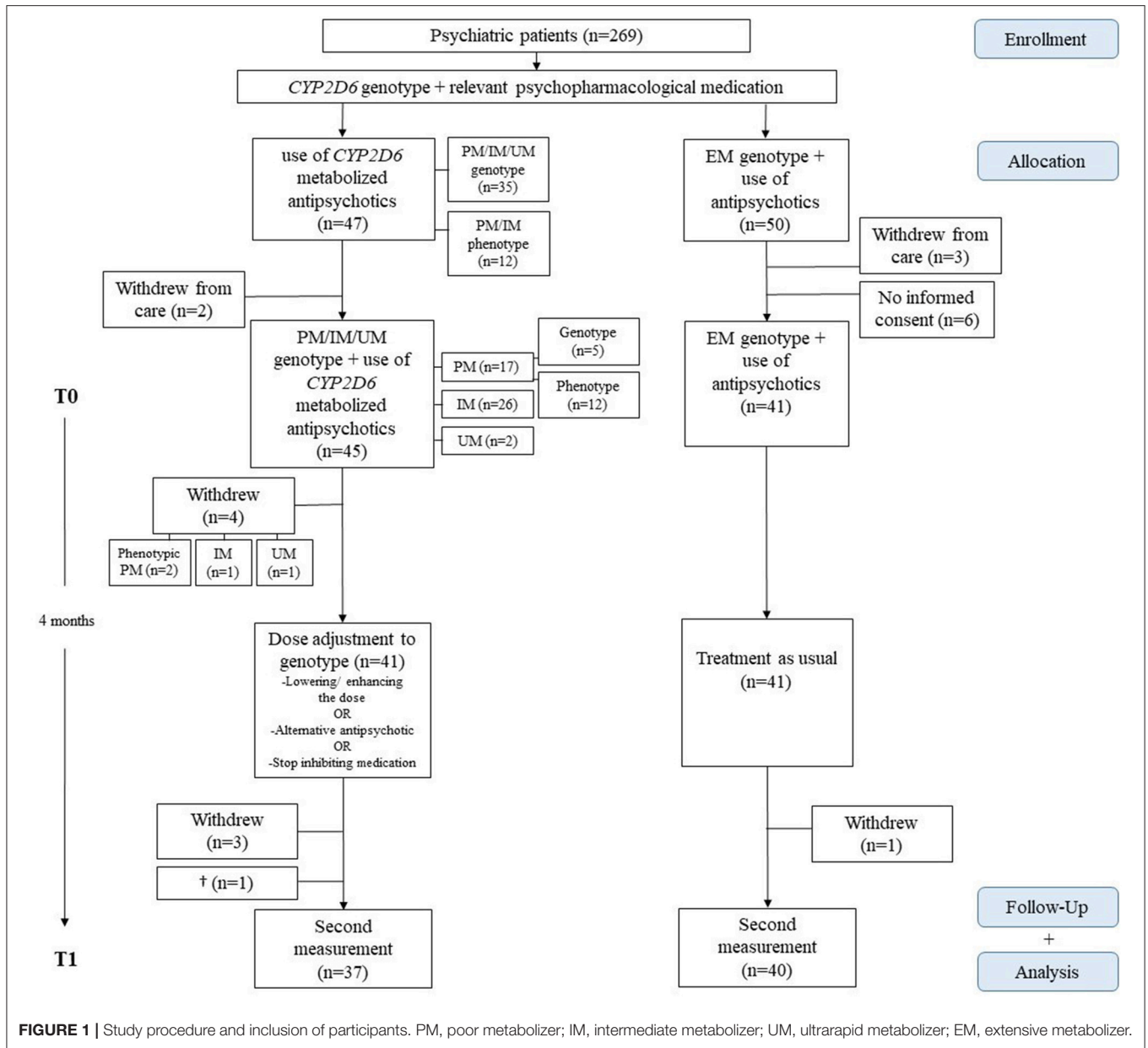
Baseline Characteristics

The study population consisted of 269 long-term psychiatric patients, of which 94% was diagnosed with a psychotic disorder. Other diagnoses were major depressive disorder, bipolar disorder, substance abuse and intellectual disability. No regular drug or alcohol use was reported in any of the questionnaires. A quarter of the patients was outpatient. The majority (92%) was admitted in a long-term treatment facility or institutional housing at the start of genotyping and had a long treatment history. Every patient was genotyped 2.5 years before the start of the intervention, and for at least this period in treatment. Patients were stable on antipsychotic treatment for at least 2.5 years, three patients switched once from antipsychotic during this treatment period.

Genotyping succeeded in 231 participants. Failure of genotyping was due to the low quality DNA obtained from the buccal swabs. Frequencies of PMs, IMs, and UMs were similar to those found in an Antillean population without psychiatric disease (22); Caucasian populations (22); and in patients using antipsychotic medication not metabolized by CYP2D6.

In total 111 out of 269 patients were using medication metabolized by CYP2D6. In total, 153 patients were prescribed two types of antipsychotics and 24 patients used antidepressant medication. Because the admitted patients received their medication from the nurses and two third of the patients were using depot medication we could account for medication adherence in 90% of the included patients. **Figure 1** presents an overview of the patient selection and study procedure.

³Switching antipsychotics available at: <http://wiki.psychiatrienet.nl/index.php/SwitchAntipsychotics>. (Accessed 2014).



The medication in the dose adjustment group was haloperidol ($n = 15$), risperidone ($n = 21$), and zuclopenthixol ($n = 9$).

Out of 41 patients, 16 patients received a dose reduction. The mean dose reduction was 0.60 DDD, (1.4 DDD in PMs, 0.54 DDD in IMs) which equals a reduction from 5 to 2 mg risperidone. Other patients stopped with their inhibiting medication or received alternative antipsychotic medication. **Table 1** presents the patient characteristics and the outcome of measurements at T0 and T1.

Four months after dose adjustment (T1), 81 (94%) patients were assessed for the follow-up measurements; one patient had died of cancer, two patients had withdrawn from psychiatric care, and two patients did not want to participate a second time.

Baseline (T0)

At baseline, no differences were found between the genotype/phenotype and the mean prescribed dose of antipsychotics as shown in **Figure 2**. In the dose adjustment group the mean DDD was 1.65 (SD 0.83) and in the control group it was 1.92 (SD 0.97) (Ns). PMs, IMs and UMs were prescribed the same amounts of psychopharmacological medication as the EMs.

Second, we found no difference in dose-dependent adverse drug reactions between the normal and extreme metabolizers. Movement disorders were equally distributed in both groups. There were no differences in metabolic parameters.

Third, no differences were found between the normal and extreme metabolizers for psychiatric symptoms, subjective

TABLE 1 | Clinical characteristics, baseline, and delta scores of the dose adjustment and control group.

	T0 dose adjustment group <i>n</i> = 45 Mean (SD)	T0 control group <i>n</i> = 41 Mean (SD)	<i>p</i> -value*	T1-T0 dose adjustment group <i>n</i> = 37 Mean (SD)	T1-T0 control group <i>n</i> = 40 Mean (SD)	<i>p</i> -value*
Male (<i>n</i>)	30	25	0.58			
Female (<i>n</i>)	15	16	0.58			
Age (years)	52.4 (12.0)	50.3 (10.8)	0.15			
Depot medication	30	27	0.59			
Outpatient	14	9	0.34			
Defined daily dose	1.65	1.92	0.17			
BPRS: 24 items (1–7)	1.79 (0.51)	1.66 (0.43)	0.26	−0.26 (0.26)	−0.17 (0.27)	0.15
SWN-20: 20 items (1–6)	4.59 (0.95)	4.45 (1.02)	0.59	0.29 (0.66)	−0.06 (0.57)	0.04
WHODAS 2.0: 32 items (1–5) (standardized total score)	32.06 (16.28)	30.40 (16.89)	0.69	5.47 (17.50)	2.93 (10.63)	0.52
EQ 5-D: 5 items (1–3)	1.30 (0.31)	1.31 (0.38)	0.78	−0.07 (0.37)	−0.05 (0.24)	0.74
Dyskinesia SHRS: 18 items: (0–6)	0.61 (0.70)	0.78 (0.87)	0.58	0.19 (0.55)	0.045 (0.57)	0.33
Parkinsonism SHRS: 10 items (0–6)	0.97 (1.12)	1.00 (1.33)	0.70	0.47 (0.76)	0.04 (0.72)	0.05
Dystonia SHRS: 2 items (0–6)	0.06 (0.34)	0.27 (1.05)	0.36	0 (0.51)	−0.20 (1.00)	0.70
BARS: 3 items (0–3)	0.10 (0.40)	0.37 (0.73)	0.01	0.13 (0.54)	−0.26 (0.70)	0.25**
Blood pressure (mmHg)	124/81 (14/10)	125/79 (17/11)	0.60	1.50 (15.48) /−0.76 (9.72)	−1.89 (15.29) /−0.76 (9.72)	0.37
BMI	26.6 (6.4)	27.3 (6.7)	0.66	−0.05 (1.51)	−0.64 (1.45)	0.12
Cholesterol (mg/dl)	159.8 (37.7)	160.0 (34.4)	0.99	8.8 (22.6)	6.4 (13.6)	0.63
HDL (mg/dl)	45.4 (15.1)	42.4 (10.7)	0.34	3.5 (6.5)	1.2 (6.3)	0.19
LDL (mg/dl)	92.7 (33.8)	92.1 (31.3)	0.94	6.4 (19.8)	8.1 (20.6)	0.76
Triglyceride (mg/dl)	104.5 (41.4)	111.6 (56.7)	0.57	−5.7 (28.4)	−6.6 (38.6)	0.93
Prolactin (ng/ml)	37.3 (62.1)	20.2 (14.4)	0.22	−13.0 (37.5)	2.6 (10.0)	0.11
Fasting glucose (mg/dl)	112.0 (25.1)	103.2 (32.0)	0.24	−4.1 (14.8)	−4.2 (17.4)	0.98
HbA1c %	4.5 (1.5)	5.4 (1.5)	0.33	−0.1 (0.0)	−0.08 (0.43)	0.95

*Significance level after Bonferroni correction $p < 0.005$. **ANCOVA test corrected for differences at T0 that were present at T1; BPRS, Brief Psychiatric Rating Scale; SWN-20, Subjective Well-being Under Neuroleptics; WHODAS, World Health Organization Disability Assessment Schedule; SHRS, St. Hans Rating Scale; BARS, Barnes Rating Scale for drug-induced akathisia.

well-being and quality of life. There were no differences in psychiatric symptoms as measured by subscales of the BPRS.

Because only 13 of the patients worked, the four items of the WHODAS 2.0 concerning work were omitted. Patients with a PM genotype or phenotype scored higher on the WHODAS 2.0 than the IMs (PM 41.5, IM 26.6, EM 29.1, UM 34.0) ($p = 0.007$); however, this difference was not significant after Bonferroni correction ($p = 0.005$).

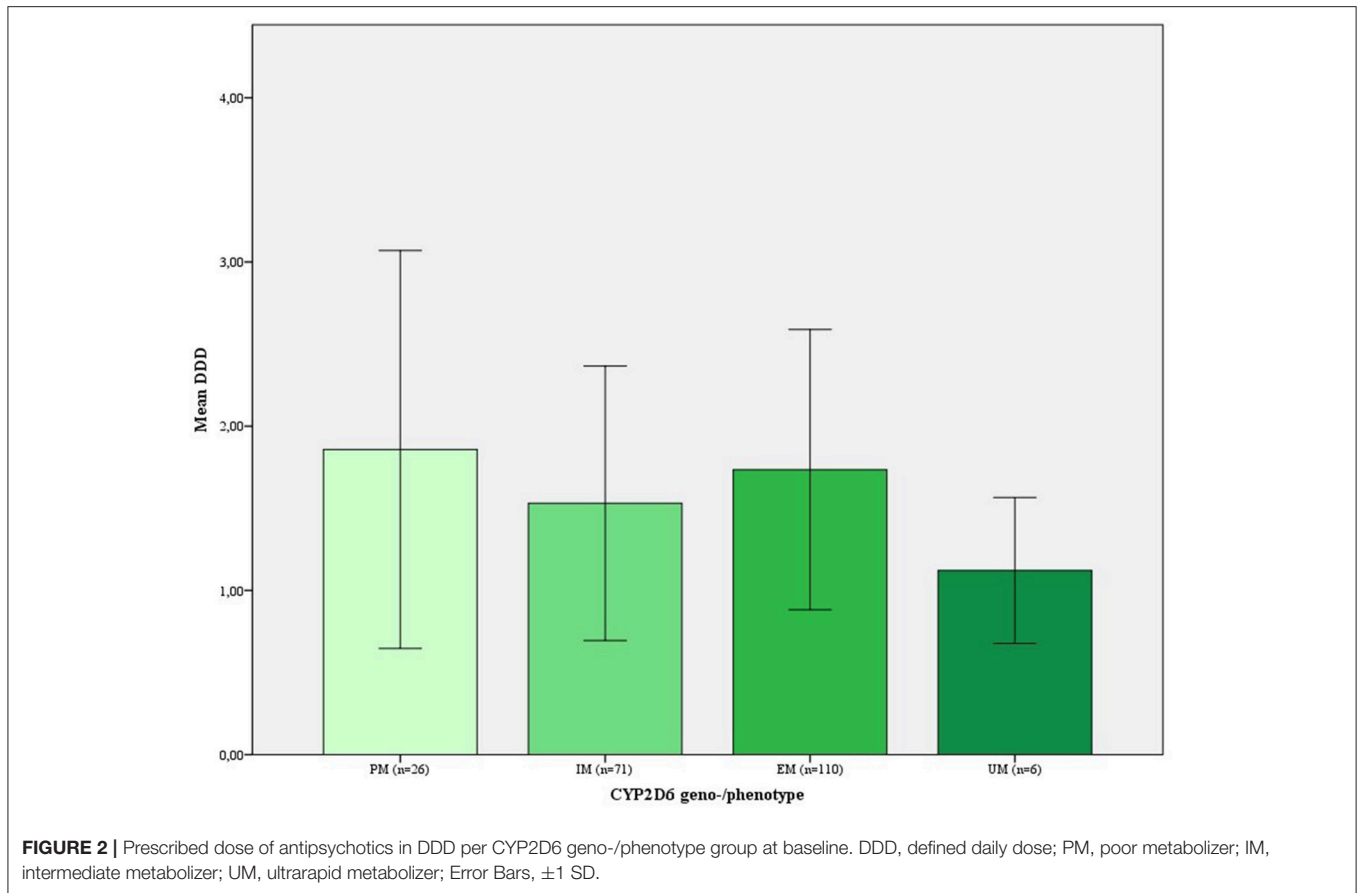
Fourth, no significant differences were found between the dose adjustment and the control group in mean therapeutic drug plasma levels of antipsychotics metabolized by CYP2D6 (analyzed with the Mann-Whitney U -test). The mean therapeutic plasma levels at T0 of respectively the dose adjustment and the control group were for haloperidol 0.0015 mg/l (SD 0.0013) ($n = 4$) and 0.0023 mg/l (SD 0.0006) ($n = 3$) ($p = 0.35$);

risperidone 0.0173 mg/l (SD 0.0164) ($n = 9$) and 0.0073 mg/l (SD 0.0081) ($n = 3$) ($p = 0.34$); zuclopenthixol 0.0143 mg/l (SD 0.0167) ($n = 9$) and 0.0160 mg/l (SD 0.0227) ($n = 2$) ($p = 0.91$). In the dose adjustment and control group there was a linear incremental relationship between dose and plasma level (data not shown).

Separate analyses were performed with the exclusion of the 12 patients with a PM profile who were selected due to inhibiting medication (data not shown); however, this exclusion had no effect on the results. There were no differences in outcomes between males and females (data not shown).

Effect of Dose Adjustment

No significant effect of dose adjustment was found on psychiatric symptoms, quality of life, or global functioning. Of the 41 patients



receiving dose adjustment, six returned to the original dose of the antipsychotics because of deterioration after dose adjustment. Deterioration of psychiatric symptoms resulted in two clinical admissions of outpatients of the dose adjustment group, whereas no admissions were reported in the control group; this difference was not significant.

There was no significant difference in deterioration in psychiatric symptoms between the two groups. In the dose adjustment group, 16 patients (39%) showed a decline in one of three aspects (defining deterioration) compared with 14 patients (34%) in the control group. In patients who deteriorated, the mean prescribed dose of antipsychotics (in DDD) after dose adjustment was equivalent to the DDD in patients who remained stable (data not shown). **Table 1** shows the mean changes in scores after dose adjustment (T1-T0). There were no differences in outcomes between males and females (data not shown). **Table 2** shows the individual therapeutic plasma levels of antipsychotics (mg/l) metabolized by CYP2D6 of the nine patients in the dose adjustment group who participated in the measurements at T0 and T1.

Effect of Dose Adjustment on Side-Effects and Well-being

Dose adjustment did not result in a significant improvement of parkinsonism, dyskinesia, dystonia, or akathisia. There was a

slight improvement (6%) in well-being as measured by the SWN-20. However, this is not considered a clinical relevant finding and is not significant after Bonferroni correction.

Effect of Dose Adjustment on Metabolic Parameters

Table 1 shows changes in metabolic parameters from baseline until after dose adjustment; no significant differences were found between the two groups.

DISCUSSION

This study rejected the hypothesis that patients with SMI on antipsychotic treatment in a clinical setting benefit from dose adjustment based on the *CYP2D6* genotype or phenotype. Importantly, at baseline, no differences were found in the severity of side-effects or global/psychiatric functioning between the dose adjustment group (with PM, IM, and UM) and control group (with EM). There was no effect of dose adjustment on these parameters.

We expected before we started the study that during years of treatment, clinicians would have optimized dosages to the geno-/phenotype based on side-effects or effectiveness of the drugs used. However at baseline, the *CYP2D6* PMs, IMs, and UMs used the same amount of antipsychotics as the EMs.

TABLE 2 | Therapeutic plasma levels of antipsychotics (mg/l) metabolized by CYP2D6 of the nine patients in the dose adjustment group measured at T0 and T1.

	Dose adjustment (%)	Plasma level change (%)	T0			T1			T1-T0			
			H	R	Z	H	R	Z	H	R	Z	
Participant 1	-25				0.0120					Undetectable*		
Participant 2	-25	-54		0.0130			0.0060				-0.0070	
Participant 3	-25	-44			0.0250					0.0140		-0.0110
Participant 4	-25				Undetectable*					0.0050		
Participant 5	STOP			0.0350			Undetectable*					
Participant 6	STOP	-65		0.0260			0.0090				-0.0170	
Participant 7	STOP	0	0.0010				0.0010			0.0000		
Participant 8	STOP				Undetectable*					Undetectable*		
Participant 9	STOP				Undetectable*					0.0110		

*All patients were using depot medication and medication adherence was guaranteed, therefore a lab result of 0 was interpreted as undetectable. H, Haloperidol; R, Risperidone; Z, Zuclopenthixol; STOP, stopped with inhibiting medication.

This finding motivated us to find out if dose adjustment could improve the clinical picture. A possible explanation for the absence of an effect, which could also explain the deterioration of some patients, is that long-term use of antipsychotics induces structural brain changes and the brain adapts to the changed dopamine levels (35). It is suggested that antipsychotics play a role in the progressive reduction of brain size and enlargement of ventricular spaces in patients with schizophrenia, which is associated with involuntary movement disorders (36, 37). Studies show that patients with long-term antipsychotic treatment have a threefold increase in loss of dopamine terminals in the substantia nigra (15% per decade vs. 5% in healthy controls) which is suggested to play a role in persistent parkinsonism and tardive dyskinesia (38). Additionally, it is reported that only 3% of patients discontinuing movement disorder-causing agents, resolved spontaneously from tardive syndromes and a reduction of the dosage of antipsychotics did not decrease the severity of parkinsonism (39, 40). It could be that in this clinical population, a dose adjustment to CYP2D6 might have had an effect in an earlier disease stadium but after years of treatment has come too late.

Another possible explanation for these findings is that in both our study groups, the baseline dosage of antipsychotics may have been so high (average DDD 1.65) that D2 receptor occupancy exceeded the optimal window for subjective well-being and to forestall extrapyramidal side-effects (41, 42). This could explain why we found no differences in the prevalence of movement disorders and subjective well-being between the dose adjustment group and control group. However, no improvements in extrapyramidal and psychiatric symptoms were found in our patients using lower dosages of antipsychotics (DDD 1.0, after reduction DDD 0.5).

Lastly, the role of the CYP2D6 genotype as a major factor in the metabolism of antipsychotics might be overestimated. The present study supports this hypothesis by showing no differences in plasma levels of drugs in the different phenotypes. Another clinical study showed, that a proportion of healthy individuals

with a PM genotype are phenotypically EMs as measured by CEIBA metabolism (43).

In clinical practice, in patients with SMI, common factors as co-morbidities, inflammation, age, smoking, and drug/alcohol use, could cause conversion of genotypic PMs into phenotypic EMs and the other way around (44–49). This undetected phenomenon, named phenoconversion, might explain the negative outcome effects in the present study.

Although a small group of patients ($n = 14$) remained stable with lower dosages of antipsychotics, no patients improved in clinical symptoms. This relatively minor saving in direct costs, did not weigh up to the costs of genotyping a large group of patients ($n = 269$).

Strengths and Limitations

This is the first study which prospectively investigated the clinical utility of dose adjustment to the CYP2D6 genotype or phenotype in patients on antipsychotic medication (20). The representativity was high as we were able to approach all psychiatric patients, with a homogenous African-Caribbean background in a restricted area, i.e., we included all three psychiatric institutes on the island of Curaçao. When including patients, no selection was made regarding the type of psychiatric care, medication, presence of side-effects or treatment response. This has resulted in a heterogeneous group of patients, representative for a general clinical population. It allowed us to analyse the effects of genotyping and dose adjustment in a clinical setting and has led to results with practical clinical value. We have no treatment history of the patients more than 2.5 years before the start of the dose adjustment but we know from clinical practice that patients with SMI make several switches in antipsychotics during the course of their illness and treatment. Earlier studies, in a larger population from this same clinic (40, 50) show this is also true for this population.

Although a large cohort of 269 psychiatric patients was genotyped, only a small number of patients (45) had an extreme geno-/phenotype and used medication metabolized by CYP2D6;

therefore, a randomized controlled trial design was not possible. A control group was used to investigate differences between normal and extreme metabolizers before dose adjustment and to monitor possible effects from time. Furthermore, the design of the study, with a rater who was blinded to whether a patient was in the dose adjustment group or the control group, reduced possible expectation bias.

Ideally we would have analyzed the effect of dose adjustment in patients using only one type of antipsychotic medication, due to the small numbers of extreme metabolizers this was not possible. Because all the investigated antipsychotics are metabolized by CYP2D6 as reported in the Flockhart table, it is very unlikely that this accounted for the absence of an effect.

At last, the Food and Drugs Administration provides a list of strong and weak inhibitors and, by inclusion of patients with a PM/IM phenotype based on interacting medication, greatly improved the prediction of the correct phenotype and has increased the power of the study (23, 24). *Post-hoc* power analysis showed that the number of included patients was high enough to demonstrate clinical relevant results. Moreover, not one out of 45 patients showed an evident improvement in side-effects, psychiatric symptoms or functioning after dose adjustment and six patients returned to their original doses, due to deterioration of psychiatric symptoms. This supports the conclusion that adjustment of the dose based on the CYP2D6 geno-/phenotype had no effect.

REFERENCES

- Nelson DR, Koymans L, Kamataki T, Stegeman JJ, Feyereisen R, Waxman DJ, et al. P450 superfamily: update on new sequences, gene mapping, accession numbers and nomenclature. *Pharmacogenetics* (1996) 6:1–42. doi: 10.1097/00008571-199602000-00002
- Engelman-Sundberg M. Genetic polymorphisms of cytochrome P450 2D6 (CYP2D6): clinical consequences, evolutionary aspects and functional diversity. *Pharmacogenomics J.* (2005) 5:6–13. doi: 10.1038/sj.tpj.6500285
- de Leon J, Susce MT, Pan R-M, Fairchild M, Koch WH, Wedlund PJ. The CYP2D6 Poor Metabolizer phenotype may be associated with risperidone adverse drug reactions and discontinuation. *J Clin Psychiatry* (2005) 66:15–27. doi: 10.4088/JCP.v66n0103
- Patsopoulos NA, Ntzani EE, Zintzaras E, Ioannidis JPA. CYP2D6 polymorphisms and the risk of tardive dyskinesia in schizophrenia: a meta-analysis. *Pharmacogenet Genomics* (2005) 15:151–8. doi: 10.1097/01213011-200503000-00003
- Brockmoller J, Kirchheiner J, Schmider J, Walter S, Sachse C, Mulleroerlinghausen B, et al. The impact of the polymorphism on haloperidol pharmacokinetics and on the outcome of haloperidol treatment. *Clin Pharmacol Ther.* (2002) 72:438–52. doi: 10.1067/mcp.2002.127494
- Lisbeth P, Vincent H, Kristof M, Bernard S, Manuel M, Hugo N. Genotype and co-medication dependent CYP2D6 metabolic activity: effects on serum concentrations of aripiprazole, haloperidol, risperidone, paliperidone and zuclopenthixol. *Eur J Clin Pharmacol.* (2016) 72:175–84. doi: 10.1007/s00228-015-1965-1
- Kawanishi C, Lundgren S, Ågren H, Bertilsson L. Increased incidence of CYP2D6 gene duplication in patients with persistent mood disorders: ultrarapid metabolism of antidepressants as a cause of nonresponse. A pilot study. *Eur J Clin Pharmacol.* (2004) 59:803–7. doi: 10.1007/s00228-003-0701-4
- Ruaño G, Szarek BL, Villagra D, Gorowski K, Kocherla M, Seip RL, et al. Length of psychiatric hospitalization is correlated with CYP2D6 functional status in inpatients with major depressive disorder. *Biomark Med.* (2013) 7:429–39. doi: 10.2217/bmm.13.16

DATA AVAILABILITY STATEMENT

Datasets are available on request: The raw data supporting the conclusions of this manuscript will be made available by the authors, without undue reservation, to any qualified researcher.

AUTHOR CONTRIBUTIONS

AK, DV, IP, PG, RvS, PvH, and HH study conception and design. AK, DV, and PG acquisition of data. AK and DV analysis and interpretation of data. AK drafting of manuscript. AK, DV, IP, PG, RvS, PvH, and HH critical revision.

FUNDING

This study was funded by ZonMW, the Netherlands Organisation for Health Research and Development (Protocol ID 70-72600-98-005). The supporters had no role in the design, analysis, interpretation, or publication of this study.

ACKNOWLEDGMENTS

The authors thank F. G. M. Heytel MD and G. M. Matroos MD, psychiatrists at the Psychiaters Maatschap Antillen, and staff at the Klinika Capriles and at the psychiatric ward of the local prison (Curaçao) for facilitating recruitment.

- Swen J, Wilting I, Goede A de, Grandia L, Mulder H, Touw D, et al. Pharmacogenetics: From Bench to Byte. *Clin Pharmacol Ther.* (2008) 83:781–7. doi: 10.1038/sj.clpt.6100507
- Swen JJ, Nijenhuis M, de Boer A, Grandia L, Maitland-van der Zee AH, Mulder H, et al. Pharmacogenetics: from bench to byte—an update of guidelines. *Clin Pharmacol Ther.* (2011) 89:662–73. doi: 10.1038/clpt.2011.34
- Müller DJ, Kekin I, Kao ACC, Brandl EJ. Towards the implementation of CYP2D6 and CYP2C19 genotypes in clinical practice: update and report from a pharmacogenetic service clinic. *Int Rev Psychiatry* (2013) 25:554–71. doi: 10.3109/09540261.2013.838944
- Thümmel S, Dor E, David R, Leali G, Battista M, David A, et al. Pharmacoresistant severe mental health disorders in children and adolescents: functional abnormalities of cytochrome P450 2D6. *Front Psychiatry* (2018) 9:2. doi: 10.3389/fpsy.2018.00002
- Goldman ML, Spaeth-Rublee B, Pincus HA. The case for Severe Mental Illness as a disparities category. *Psychiatr Serv.* (2018) 69:726–8. doi: 10.1176/appi.ps.201700138
- West JC, Wilk JE, Olfson M, Rae DS, Marcus S, Narrow WE, et al. Patterns and quality of treatment for patients with schizophrenia in routine psychiatric practice. *Psychiatr Serv.* (2005) 56:283–91. doi: 10.1176/appi.ps.56.3.283
- Covell NH, Weissman EM, Schell B, McCorkle BH, Summerfelt WT, Weiden PJ, et al. Distress with medication side effects among persons with Severe Mental Illness. *Adm Policy Ment Heal Ment Heal Serv Res.* (2007) 34:435–42. doi: 10.1007/s10488-007-0131-1
- Wullschlegler A, Khazaal Y, Heinze M. Editorial: new models of care for patients with severe mental illness—Bridging in- and outpatients. *Front Psychiatry* (2018) 9:3. doi: 10.3389/fpsy.2018.00003
- Chou WH, Yan FX, de Leon J, Barnhill J, Rogers T, Cronin M, et al. Extension of a pilot study: impact from the cytochrome P450 2D6 polymorphism on outcome and costs associated with severe mental illness. *J Clin Psychopharmacol.* (2000) 20:246–51. doi: 10.1097/00004714-200004000-00019
- Herbild L, Andersen SE, Werge T, Rasmussen HB, Jürgens G. Does pharmacogenetic testing for CYP450 2D6 and 2C19 among patients with

- diagnoses within the schizophrenic spectrum reduce treatment costs? *Basic Clin Pharmacol Toxicol.* (2013) 113:266–72. doi: 10.1111/bcpt.12093
19. Fleeman N, Dundar Y, Dickson R, Jorgensen A, Pushpakom S, McLeod C. Cytochrome P450 testing for prescribing antipsychotics in adults with schizophrenia: systematic review and meta-analyses. *Pharmacogenomics J.* (2011) 11:1–14. doi: 10.1038/tpj.2010.73
 20. Fleeman N, McLeod C, Bagust A, Beale S, Boland A, Dundar, Y, et al. The clinical effectiveness and cost-effectiveness of testing for cytochrome P450 polymorphisms in patients with schizophrenia treated with antipsychotics: a systematic review and economic evaluation. *Health Technol Assess.* (2010) 14:1–157, iii. doi: 10.3310/hta14030
 21. Müller DJ, Brandl EJ, Degenhardt F, Domschke K, Grabe H, Gruber O, et al. Pharmakogenetik in der Psychiatrie: eine Standortbestimmung. *Nervenarzt* (2018) 89:290–9. doi: 10.1007/s00115-017-0479-8
 22. Koopmans AB, Vinkers DJ, Gelan PJ, Hoek HW, van Harten PN. CYP2D6 and CYP2C19 genotyping in psychiatric patients on psychotropic medication in the former Dutch Antilles. *Pharmacogenomics* (2017) 18:1003–12. doi: 10.2217/pgs-2017-0011
 23. Borges S, Desta Z, Jin Y, Faouzi A, Robarge JD, Philips S, et al. Composite functional genetic and comedication CYP2D6 activity score in predicting tamoxifen drug exposure among breast cancer patients. *J Clin Pharmacol.* (2010) 50:450–8. doi: 10.1177/0091270009359182
 24. Crews KR, Gaedigk A, Dunnenberger HM, Klein TE, Shen DD, Callaghan JT, et al. Clinical Pharmacogenetics Implementation Consortium (CPIC) guidelines for codeine therapy in the context of cytochrome P450 2D6 (CYP2D6) genotype. *Clin Pharmacol Ther.* (2012) 91:321–6. doi: 10.1038/clpt.2011.287
 25. *Guidelines for ATC Classification and DDD Assignment 2014.* WHO Collaborating Centre for Drug Statistics Methodology, Oslo (2014).
 26. Dingemans PM, Winter ME, Bleeker JAC, Rathod P. A cross-cultural study of the reliability and factorial dimensions of the Brief Psychiatric Rating Scale (BPRS). *Psychopharmacology* (1983) 80:190–1.
 27. Gerlach J, Korsgaard S, Clemmesen P, Lund Laursen A, Magelund G, Noring U, et al. The St. Hans Rating Scale for extrapyramidal syndromes: reliability and validity. *Acta Psychiatr Scand.* (1993) 87:244–52.
 28. Barnes TRE. A rating scale for drug-induced akathisia. *Br J Psychiatry* (1989) 154:672–7.
 29. Janno S, Holi MM, Tuisku K, Wahlbeck K. Actometry and Barnes Akathisia Rating Scale in neuroleptic-induced akathisia. *Eur Neuropsychopharmacol.* (2005) 15:39–41. doi: 10.1016/j.euroneuro.2004.05.003
 30. Mulhern B, Mukuria C, Barkham M, Knapp M, Byford S, Soeteman D, et al. Using generic preference-based measures in mental health: psychometric validity of the EQ-5D and SF-6D. *Br J Psychiatry* (2014) 205:236–43. doi: 10.1192/bjp.bp.112.122283
 31. Üstün TB, Chatterji S, Kostanjsek N, Rehm J, Kennedy C, Epping-Jordan J, et al. Developing the World Health Organization Disability Assessment Schedule 2.0. *Bull World Health Organ.* (2010) 88:815–23. doi: 10.2471/BLT.09.067231
 32. Üstün T, Chatterji S, Villanueva M, Bendib L, Çelik C, Sadana R, et al. *WHO Multi-Country Survey Study on Health and Responsiveness 2000-2001.* GPE discussion Paper No 37. (2001).
 33. de Haan L, Weisfelt M, Dingemans P, Linszen D, Wouters L. Psychometric properties of the Subjective Well-Being Under Neuroleptics scale and the Subjective Deficit Syndrome Scale. *Psychopharmacology* (2002) 162:24–8. doi: 10.1007/s00213-002-1054-x
 34. Risselada AJ. Switchen van en naar depotantipsychotica. *Psyfar* (2012) 12:18–23.
 35. Torres US, Portela-Oliveira E, Borgwardt S, Busatto GF. Structural brain changes associated with antipsychotic treatment in schizophrenia as revealed by voxel-based morphometric MRI: an activation likelihood estimation meta-analysis. *BMC Psychiatry* (2013) 13:342. doi: 10.1186/1471-244X-13-342
 36. Moncrieff J, Leo J. A systematic review of the effects of antipsychotic drugs on brain volume. *Psychol Med.* (2010) 40:1409–22. doi: 10.1017/S0033291709992297
 37. Owens DG, Johnstone EC, Crow TJ, Frith CD, Jagoe JR, Kree L. Lateral ventricular size in schizophrenia: relationship to the disease process and its clinical manifestations. *Psychol Med.* (1985) 15:27–41.
 38. Seeman P, Tinazzi M. Loss of dopamine neuron terminals in antipsychotic-treated schizophrenia; relation to tardive dyskinesia. *Prog Neuro Psychopharmacol Biol Psychiatry* (2013) 44:178–83. doi: 10.1016/j.pnpbp.2013.02.011
 39. Zutshi D, Cloud LJ, Factor SA. Tardive syndromes are rarely reversible after discontinuing dopamine receptor blocking agents: Experience from a university-based movement disorder clinic. *Tremor Other Hyperkinet Mov.* (2014) 4:1–9. doi: 10.7916/D8MS3R8C
 40. Mentzel CL, Bakker PR, van Os J, Drukker M, Matroos GE, Hoek HW, et al. Effect of antipsychotic type and dose changes on tardive dyskinesia and parkinsonism severity in patients with a Serious Mental Illness. *J Clin Psychiatry* (2017) 78:e279–85. doi: 10.4088/JCP.16m11049
 41. de Haan L, Lavalaye J, van Bruggen M, van Nimwegen L, Booij J, van Amelsvoort T, et al. Subjective experience and dopamine D2 receptor occupancy in patients treated with antipsychotics: clinical implications. *Can J Psychiatry* (2004) 49:290–6. doi: 10.1177/070674370404900503
 42. Kapur S, Zipursky R, Jones C, Remington G, Houle S. Relationship between dopamine D2 occupancy, occupancy, clinical response, and side effects: A double-blind PET study of first-episode schizophrenia. *Am J Psychiatry* (2000) 157:514–20. doi: 10.1176/appi.ajp.157.4.514
 43. De Andrés F, Terán S, Hernández F, Terán E, LLerena A. To genotype or phenotype for personalized medicine? CYP450 drug metabolizing enzyme genotype–phenotype concordance and discordance in the Ecuadorian population. *Omi A J Integr Biol.* (2016) 20:699–710. doi: 10.1089/omi.2016.0148
 44. Shah RR, Smith RL. Addressing phenoconversion: the Achilles' heel of personalized medicine. *Br J Clin Pharmacol.* (2014) 79:222–40. doi: 10.1111/bcp.12441
 45. Shah RR, Smith RL. Inflammation-induced phenoconversion of polymorphic drug metabolizing enzymes: Hypothesis with implications for personalized medicine. *Drug Metab Dispos.* (2014) 43:400–10. doi: 10.1124/dmd.114.061093
 46. Shah RR. Pharmacogenetics and precision medicine: Is inflammation a covert threat to effective genotype-based therapy? *Ther Adv Drug Saf.* (2017) 8:267–72. doi: 10.1177/2042098617712657
 47. Berm E, Kok R, Hak E, Wilffert B. Relation between CYP2D6 genotype, phenotype and therapeutic drug concentrations among nortriptyline and venlafaxine users in old age psychiatry. *Pharmacopsychiatry* (2016) 49:186–90. doi: 10.1055/s-0042-105443
 48. Preskorn SH, Kane CP, Lobello K, Nichols AI, Fayyad R, Buckley G, et al. Cytochrome P450 2D6 phenoconversion is common in patients being treated for depression. *J Clin Psychiatry* (2013) 74:614–21. doi: 10.4088/JCP.12m07807
 49. Preskorn SH. Prediction of individual response to antidepressants and antipsychotics: an integrated concept. *Dialogues Clin Neurosci.* (2014) 16:545–54.
 50. van Harten PN, Hoek HW, Matroos GE, Koeter M, Kahn RS. Intermittent neuroleptic treatment and risk for tardive dyskinesia: Curaçao Extrapyramidal Syndromes Study III. *Am J Psychiatry* (1998) 155:565–7.

Conflict of Interest Statement: The authors declare that the research was conducted in the absence of any commercial or financial relationships that could be construed as a potential conflict of interest.

The reviewer AS and handling editor declared their shared affiliation at time of review.

Copyright © 2018 Koopmans, Vinkers, Poulina, Gelan, van Schaik, Hoek and van Harten. This is an open-access article distributed under the terms of the Creative Commons Attribution License (CC BY). The use, distribution or reproduction in other forums is permitted, provided the original author(s) and the copyright owner(s) are credited and that the original publication in this journal is cited, in accordance with accepted academic practice. No use, distribution or reproduction is permitted which does not comply with these terms.