



CENTER ON JAPANESE ECONOMY AND BUSINESS

日本経済経営研究所

Working Paper Series

February 2009, No. 278

Technological Leadership and Late Development: Evidence from Meiji Japan, 1868-1912

John P. Tang

This paper is available online at www.gsb.columbia.edu/cjeb/research/ac

C O L U M B I A U N I V E R S I T Y I N T H E C I T Y O F N E W Y O R K

Technological Leadership and Late Development: Evidence from Meiji Japan, 1868-1912

John P. Tang¹

US Census Bureau

Center for Economic Studies

john.tang@census.gov

Abstract

Large family-owned conglomerates known as zaibatsu have long been credited with leading Japanese industrialization during the Meiji Period (1868-1912), despite a lack of empirical analysis. I develop a new dataset collected from corporate genealogies and estimate the likelihood of a firm being an industry pioneer with discrete choice econometric methods. I find that certain characteristics associated with zaibatsu increase the likelihood of leading entry into new industries. In particular, first entry probabilities increase with industry diversification and private ownership, which may provide internal financing and risk-sharing. Nevertheless, the costs of excessive diversification may deter additional pioneering, which may account for the loss of zaibatsu technological leadership by the turn of the century.

JEL classifications: L25, N85, O14, O33

Keywords: diversification, industrialization, Japan, late development, technology adoption

¹ Thanks to Barry Eichengreen and Christina Romer for their encouragement and detailed comments across multiple versions of this paper. The conclusions expressed in this paper are those of the author and do not necessarily reflect the views of the U.S. Census Bureau. All errors are mine.

I

Japan's rapid industrialization at the end of the nineteenth century is commonly attributed to the leadership of large, family-owned conglomerates known as zaibatsu. These firms had the advantages of size, which gave them sufficient scale to adopt capital-intensive technology; family ownership, which conferred autonomy from shareholders seeking short-term profit; diversified holdings, which spread risk and allowed for internal financing of investments; employment of well-educated salaried managers; and access to natural resources like metals and coal.² The benefits of these features were especially magnified in Japan during the Meiji Period (1868-1912), which shared with other late developing economies weak institutions, poor infrastructure, and immature capital markets.³ Consequently, it has been argued that these business groups "[provided] the impetus to the country's modern economic development," without which Japanese success would not have been nearly as rapid or assured.⁴

Belying these apparent advantages, however, are a number of uncomfortable observations. First, Japanese industries were primarily labor-intensive during this period, with the economy transitioning to heavier sectors starting in the 1900s. This suggests that zaibatsu had few opportunities to exploit scale economies, especially given that many of their holdings were commercial (for example, shipping, merchandising). While commerce did allow for economies of scope, the attributes of size and wealth are less meaningful. Scope economies differ from scale economies in their reliance on the savings from fixed costs (for example, shared facilities, distribution channels) rather than variable costs (for example, shared inputs, learning curves). Another way of distinguishing the two is that scope economies typically involve production of multiple, unrelated goods while scale economies are usually from increased production of the same (or similar) goods.} Second, despite their substantial wealth, zaibatsu did not lead development of two important early sectors, cotton spinning and railways, which due to their scale required funding from

² Morikawa, *Zaibatsu*, pp. 12-14; Fruin, *Japanese Enterprise*, pp. 3-5.

³ Gerschenkron, *Economic Backwardness*.

⁴ Morikawa, *Zaibatsu*, p. xvii. While the direct translation of zaibatsu is "financial clique," they are more commonly known as "business groups" in existing literature; see Morck and Nakamura, "Business groups."

issued stock.⁵ Evidence of zaibatsu leadership in developing new industries is also underwhelming: new data indicate that of the 109 privately started industries in the Meiji Period, only 12 were pioneered by zaibatsu. Other scholars claim that these conglomerates owed their pathbreaking efforts to government patronage, not to their own merits or intrinsic qualities.⁶ More recent work suggests zaibatsu employed few university graduates during the Meiji Period and lagged their competitors in using new technology thereafter.⁷

Notwithstanding these concerns, the visibility of zaibatsu has generated a substantial body of research. Common to countries at an early stage of development, "[Japan] lacked the basic commercial and financial infrastructure and the technical and managerial skills essential to introduce and operate Western industrial technology."⁸ Consequently, numerous studies have asserted that zaibatsu led the introduction and use of foreign technology in Japan's early period of industrialization, although these claims are supported mainly by anecdote, case studies, or cross-country comparisons. The few papers that use quantitative data to compare zaibatsu behavior to other firms are limited to financial records dating primarily from the Taisho Period (1912-1926), leaving what occurred in prior years unclear.

This paper attempts to fill in some of these gaps, particularly on the issues of industrial and technological leadership. I test whether characteristics typical of zaibatsu increase the likelihood of being an industry pioneer, and thus gauge how important these business groups were to technological adoption in Meiji Japan. These features include industry diversification and concentrated private ownership, and I further control for industry type and technological innovation.⁹ My main finding is that both diversification and private ownership significantly affect a firm's probability of introducing new production technology. This is consistent with

⁵ Morikawa, *Zaibatsu*, p. 27.

⁶ Morikawa, *Zaibatsu*, p. 23; Nakagawa, "Business strategy," pp. 2-12.

⁷ Frankl, "Analysis," p. 1001.

⁸ Morikawa, *Zaibatsu*, p. x.

⁹ A third common feature among zaibatsu is the substantial wealth held by their founding families, but this information is not publicly available and thus omitted from the analysis. Nevertheless, some specifications include an indicator for zaibatsu affiliation in addition to private ownership and diversification to proxy for this characteristic.

studies averring that diversification allows firms to take greater risks in their investments and subsidizes costs using revenues from existing operations and retained earnings. Private ownership also provides flexibility in financial choices and a potentially longer investment horizon. In the absence of developed financial markets, these features may have given zaibatsu the edge over smaller independent firms in leading technology adoption.¹⁰

Ironically, I also find that there is an optimal level of diversification, beyond which the probability of pioneering an industry decreases relative to less diversified firms. One explanation is that the administrative costs and managerial difficulties of entering, much less pioneering, new sectors begin to outweigh the benefits of risk sharing. Specifically, I find that highly diversified firms are less likely to pioneer additional industries as early as the 1880s, even in innovative sectors where their advantages are more pronounced. This behavioral change corroborates other research that shows Meiji-era zaibatsu lagging behind technologically independent firms and newer conglomerates in the Taisho and early Showa (1926-1989) Periods.¹¹

At the heart of the analysis is the assumption that the timing of an industry's initial appearance approximates when its production technology was introduced to Japan. As a latecomer to industrialization, Japan could borrow existing technologies without needing to develop them itself. Thus, it seems reasonable to consider the first Japanese firm in a new sector as the first adopter of the technology, with all the associated costs and risks. By extension, determining whether zaibatsu characteristics correspond to those of industry pioneers provides a way to evaluate claims of their purported leadership and to assess what specifically may have contributed to their early leadership in Japanese development.

A consequence of the "first appearance, first adoption" assumption is that my analysis eschews the need for financial records, few of which existed before the twentieth century. Instead, I develop a new establishment-level dataset from the Meiji Period, which I gathered from corporate genealogies. These genealogies arguably comprise the oldest source of firm information across industries for Japan.

¹⁰ Morikawa, *Zaibatsu*, pp. 93-94.

¹¹ Frankl, "Analysis," p. 1001.

By focusing on the Meiji Period, when Japan began to industrialize, I avoid drawing anachronistic conclusions that use more detailed documentation from later years. Furthermore, I circumvent the distortions associated with the global depression in the 1920s and militarization in the 1930s.

Other departures from existing research include looking at specific features of Meiji-era zaibatsu, as opposed to individual zaibatsu, and using a cross-section of industries in the economy. Given that discussions of Japanese industrial development refer to zaibatsu collectively, it makes sense to weigh the importance of their shared features like family ownership and diversification. Similarly, considering a wide range of industries allows one to compare differences in factor intensity and corresponds with late development theory's emphasis on multi-sector coordination.¹²

II

As a late developing economy with immature financial and legal institutions, Meiji Japan seems to provide an ideal context for zaibatsu-led industrialization. In particular, given the need for capital mobilization and broad-based development, zaibatsu attributes like diversified holdings, internal financing, family wealth and ownership, and access to natural resources and skilled labor would be highly advantageous. Before World War II, these features allowed zaibatsu to import physical capital and technology from abroad; employ skilled foreigners and graduates from newly established Japanese universities; and expand into new markets.¹³ Independent firms, on the other hand, were typically under-capitalized due a wealthy merchant class reluctant to invest in unfamiliar technology; high dividend payments that left little retained earnings for expansion; and weak capital markets plagued with ill-defined property rights and high barriers to equity finance.¹⁴

Nevertheless, some scholarship disputes these factors as motivating zaibatsu leadership and suggests these conglomerates emerged only through government

¹² See Morck and Nakamura, "Business groups."

¹³ Morikawa, *Zaibatsu*, pp. xvii-xxiv; Fruin, *Japanese Enterprise*, pp. 3-5.

¹⁴ Morikawa, *Zaibatsu*, pp. 4, 57, 93-94.

assistance.¹⁵ Throughout this period, the government sponsored study trips and foreign employment; invested in roads, telegraphs, utilities and transport facilities; and subsidized strategic sectors like shipping, construction, armaments, and mining, all which tended to benefit zaibatsu given their fields of operation and international exposure. More controversial were the personal relationships between zaibatsu families and government officials, with zaibatsu allegedly receiving preferential treatment in contracts and the privatization of public enterprises during the 1880s.

Proponents of this perspective, however, also find it difficult to substantiate their claims, such as identifying the direction of causality or demonstrating that zaibatsu received benefits disproportionate to the risks involved. For example, Mitsui claims it invested in industries like coal mining, textiles, and machinery because of their anticipated importance to economic growth and potential profitability.¹⁶ Whether government-zaibatsu relationships on balance benefited the latter is questionable, considering that some came close to bankruptcy due to changes in political administration or public pressure for competition.¹⁷ Many zaibatsu also emerged with no official patronage, having been established well before the Meiji Period or operating in trades that received little public investment, and their purchase of state assets below book value may have had less to do with favoritism and more with government haste to staunch continued losses. More generally, public goods like education and infrastructure are non-excludable and thus were available to both zaibatsu and independent entrepreneurs. Finally, others note that Japan's takeoff occurred toward the end of the century, post-dating most of the government's industrial activities.¹⁸

Similarly, research comparing the performance of zaibatsu to other private firms finds mixed evidence supporting zaibatsu technological leadership. Jennifer Frankl, using financial records for 130 firms between 1915 and 1937, analyzes the effect of zaibatsu affiliation on equity returns and risk profiles. She finds that Meiji-era zaibatsu had more volatile returns on equity than its competitors.¹⁹ In

¹⁵ Nakagawa, "Business strategy," pp. 3-12.

¹⁶ Morikawa, *Zaibatsu*, p. 66.

¹⁷ Morikawa, *Zaibatsu*, pp. 20-26.

¹⁸ Ohkawa and Rosovsky, *Japanese Economic Growth*, p. 20.

¹⁹ Frankl, "Analysis," p. 1012.

addition, these zaibatsu were slow to adopt new technology and to expand into new industries and markets. Two other studies, in contrast, find the average zaibatsu outperforming independent firms and having less volatile returns, which the authors attribute to concentrated ownership and the holding company structure.²⁰

The discrepancy in findings partly depends on whether a study distinguishes Meiji-era zaibatsu from newer ones, something Frankl does and the others do not. Yet it may be the case that none of these studies apply to an earlier period with different institutional and market conditions, and that the designation of zaibatsu is itself endogenously determined based on their continued success and non-market considerations. Another concern recognized by the authors is that using records from a modest sample of large firms introduces bias to the results and overlooks contributions from smaller or non-traded firms.²¹ Since the latter may not have been required to document their finances, results excluding them may not generalize for the whole of the economy. Thus, a more representative firm-level dataset across the industrial spectrum from the Meiji Period would help to clarify the role of zaibatsu in industry formation and innovation.

III

A problem common to historical studies of economic development is the lack of data. Few developing countries have the capacity to create and maintain detailed information on industries and firms, and Japan in the nineteenth century was no exception. Even historic data in the *Long Term Economic Statistics of Japan* document industrial development beginning in 1887 and only available at the national level.²² Nevertheless, potentially valuable information may be found in an overlooked resource: corporate genealogies, which track firms from their origins to modern times. In particular, genealogies provide dates of establishment, ownership and source of setup finance, industry classification, and geographic location. Despite being less quantitative than financial reports, these data can be used to assess relationships between firms and sectors while controlling for the abovementioned characteristics. More importantly, they often represent the oldest reliable evidence

²⁰ Miyajima et al, "Corporate governance"; Okazaki, "Role."

²¹ Frankl, "Analysis," p. 1003.

²² Ohkawa, *Nihon*.

of firm activity across the industrial spectrum. I use as my primary data source for this study the *Shuyo Kigyo no Keifuzu*, a compilation of corporate genealogies edited by the business historians Shintaro Yagura and Yoshiro Ikushima. Additional data include firm financial reports from the *Eigyō Hokokusho Shusei* collection and various Japanese industry indices and firm case studies.²³

The *Shuyo* compilation includes genealogies for 1,089 firms that were listed on the Tokyo Stock Exchange as of September 1984, contain over 14,000 unique establishment observations, and date back to the early nineteenth century or earlier. One concern to using genealogies is that they do not represent a random sample of business activity because of firm survivor bias, meaning that they contain only establishments that survived long enough to be recorded. This bias is partly mitigated in the *Shuyo* because the genealogies explicitly identify asset transfers from bankrupt or merged establishments to successful ones. Thus, despite firm failure or reorganization, both surviving and deceased firms remain on record. The authors also cross-reference establishments that appear in multiple genealogies and track the ancestry of failed establishments, providing a way to verify a firm's startup status. The inclusion of failed establishments is particularly relevant in manufacturing sectors since they typically leave behind transferable assets, unlike firms in some service industries that require little capital investment or equipment. Figure 1 shows the number of startup establishments over the Meiji Period.

[Figure 1 here]

Industries can be identified through the company name or editorial annotation, and I retroactively apply industry codes to each observation using the 1984 edition of the *Standard Industrial Classification for Japan* (JSIC) produced by the Statistics Bureau of Japan. The Japanese SIC system resembles the United States SIC system (replaced in 1997 with the North American Industry Classification System), but is not a one-to-one mapping. Like its American counterparts, the Japanese system classifies industries hierarchically, from broader

²³ See Yushodo, *Eigyō*; Asia Research, *Outline*; Dodwell, *Industrial Groupings*; Mitsubishi Public Affairs Committee, *Brief History*; Ohsono, *Charting*; and Russell, *House of Mitsui*.

industry groups (two-digits) to narrow ones (four-digits). For example, a two-digit code of 05 refers to Metal Mining; a three-digit code of 053 refers to Iron Ore Mining; and a four-digit code of 0534 refers to Chromium (a type of iron ore) Mining.

Typically, company names in Japan have three parts: personal/geographic name + industrial activity + industrial operation/facility (for example, Ishitsuka + Bottle Manufacturing + Factory), although there are many that use a combination of only the first two identifiers. There are also some exceptions to the single-industry-per-establishment identification, excluding conglomerates. For example, Kotahara Coach and Rail is classified in both the Local Railway (JSIC four-digit code 4021) and Light Passenger Vehicle Transport (JSIC4 4141) industries. For establishments without any industry indicator in the genealogies, which represent less than ten percent of the sample, I search for Japanese firm names in electronic databases as well as industry reports.

IV

For my analysis, I use a maximum likelihood probit model to estimate relative likelihoods of first entry. That is, I set the entry outcome (first entry or not) as my dichotomous dependent variable. My main independent variables include a continuous measure of how diversified a firm is (eg, the number of industries a firm operates in at the time of entry) and an indicator for ownership type (ie, publicly traded or private-held), both considered essential differences between zaibatsu and independent firms. Other differences like family wealth, employment of highly skilled labor, access to natural resources, and relationships with the central government are not identifiable with existing data. However, to address this possible omitted variable bias, I use both a specification test and variable decomposition as described in the next section. To capture the decreasing marginal benefit of diversification, I include the square of the firm's number of industries. I also use an indicator for technological innovation, which considers whether an industry uses technology that is new to the domestic market or is similar to an existing industry. In addition to interaction terms between each of these variables, I account for factors like regulatory change, market demand, and industry preferences with time and industry group dummy variables. The estimated equation takes the following form:

$\Pr(Y=1) = \Phi (X_i \beta_i + X_j \beta_j + X_k \beta_k + X_t \beta_t)$, where

Y = JSIC four-digit industry pioneer

Φ is the cumulative normal distribution function

X_i = firm-level variables (diversification, ownership)

X_j = industry-level variables (innovativeness, JSIC2 indicators)

X_k = interaction terms among X_i and X_j

X_t = five-year indicator variables

Industry diversification, measured in the number of industries a firm is already in at the time of establishment in a new industry, appears twice in the estimation. By definition, a conglomerate is a multi-sector firm; however, independent firms that simultaneously enter multiple industries at the time of establishment can be considered diversified as well. This variable increases in magnitude for each zaibatsu over the Meiji Period. Since diversifying across industries reduces volatility in revenues and spreads industry-specific risk, it is reasonable to expect diversified firms being more likely to lead entry in new sectors.

On the other hand, having many different industry holdings, especially in technologically advanced and capital-intensive sectors, poses organizational and strategic challenges and may deter further diversification. This was the case in the nineteenth and early twentieth centuries, before multi-divisional enterprises and professional management became the norm.²⁴ In other words, synergies may exist between certain firms and industries but not for others, and there may be an optimal number of industries for a single firm to operate in, beyond which the costs of multiple holdings exceed the benefits. Some examples include disputes between the directors of the Mitsui trading company and Mitsui bank over investment strategy and irrational investment choices by the founder of the Furukawa zaibatsu.²⁵ I account for this decreasing marginal benefit by separately including the square of the diversification variable.

The variable for firm ownership type takes the value of one for publicly-traded, joint-stock firms or zero for privately-held, non-traded firms. Since one

²⁴ Morikawa, *Zaibatsu*, pp. 23, 113.

²⁵ Morikawa, *Zaibatsu*, pp. 66, 74.

prominent characteristic of zaibatsu is their family ownership, this variable may indicate their desire for investment autonomy and to avoid public disclosure of their finances.²⁶ That said, many zaibatsu held controlling interests in publicly-traded firms and there were independent non-traded firms, so this variable only partly captures the difference between zaibatsu and non-zaibatsu firms. Anecdotal evidence suggests that equity-financed firms, unlike those with internal or debt-based financing, were small and undercapitalized by their need to pay dividends. Moreover, many listed firms were run for short-term profit and were incorporated for a predetermined time period, between three to ten years.²⁷ I hypothesize that non-traded, private ownership allows a firm to make riskier, long-term investments such as leading entry into new industries since financing was less subject to business cycle volatility and investor impatience.

This ownership variable also addresses the issue of corporate monitoring through holding companies, which was important in both the pre- and postwar eras. Prior to the adoption of the 1893 Commercial Code, which standardized incorporation procedures and defined fiduciary responsibilities, the limited ability of outside investors to monitor management and dominant owners may have hindered the public listing of firms. Although incorporation existed since the 1860s, the lack of institutions governing business practice or protecting property rights remained until the 1890s. Thus, these two factors also suggest a positive correlation between non-traded ownership and first entry.

The rationale for focusing on industry innovativeness is that pioneering sectors that use technologies similar to those already in the market incurs less entry risk and demonstrates less leadership. This is because another firm had already borne the cost of foreign adoption, which presumably is more than adapting technology from a domestic source. Firms using derivative technology are also aware of how the original has been received by the market and some of its operational difficulties. I differentiate between these two types of industry pioneering with an indicator variable for technology innovativeness. It takes a value of one for an industry that is the first to be established out of its broader industry

²⁶ Morikawa, *Zaibatsu*, p. 43.

²⁷ Fruin, *Japanese Enterprise*.

grouping, and zero for industries that are not. An example of this is the three-digit industry grouping ``251: Glass Manufacturing," which includes the related four-digit industries of ``2511: Plate Glass," ``2514: Glass Container," and ``2515: Scientific Glassware." If there were no glass manufacturing industries prior to 1871, when the Ishitsuka Bottle Manufacturing Factory was founded, then only the four-digit industry ``2514" would be coded as innovative. Based on zaibatsu advantages and the claim that, *ceteris paribus*, Japanese entrepreneurs were ``reluctant to invest in modern industries in which they lacked experience," I expect the interaction between zaibatsu and innovativeness to be positive.²⁸

The weakness of private capital and lack of robust financial intermediaries suggest problems mobilizing investment funding for capital-intensive industries, and play to the advantages of zaibatsu affiliation. However, since no data exist to quantitatively measure the capital intensity of Japanese industries during this period, I use major industry dummies to account for inter-industry differences and cluster standard errors by four-digit industry to control for random industry shocks. To identify shared influences, I interact pairs of the following independent variables: zaibatsu affiliation, diversification, ownership, and industry innovativeness. I also include five-year period indicator variables to capture short- to medium-term temporal shocks to institutions and market conditions.

As for exclusions, I remove government firms from the sample on the grounds that the behavior of such firms is not obviously driven by market factors. I also remove all sectors that were established prior to the Meiji Period since they are less well-documented and unlikely to use technology borrowed from abroad; these include primary sector activities, traditional apparel/food manufacture, retailing, and other miscellaneous services. For duplicate appearances in the dataset due to changes in name or ownership, only the first appearance is included in the analysis. Establishments in foreign countries are omitted as well. These exclusions reduce the number of zaibatsu affiliates from 89 to 32 in the dataset, and I omit the 173 establishments that could not be identified by industry.

²⁸ Morikawa, *Zaibatsu*, p. 4.

V

Between 1868 and 1912, 1,958 entrants could be identified by a four-digit JSIC code. Entrants include both individual firms as well as industry divisions within multi-industry companies (for example, conglomerates). With the restrictions mentioned above, the dataset reduces to 1,478 entrants, of which 1,446 were independent firms and 32 were affiliated with zaibatsu. Of the 109 new industries started with private funding, 12 were pioneered by zaibatsu and 97 by independent entrepreneurs. Additional summary statistics are in Table 1, which shows breakdowns by firm affiliation for various firm- and industry-level characteristics and the numbers of industry pioneers in parentheses.

[Tables 1 and 2 here]

The large disparity between the absolute number of independent and zaibatsu establishments belies substantial behavioral and organizational differences at the industry level. For example, zaibatsu are disproportionately represented in innovative industries (75 percent of establishments) compared to independent firms (23 percent). As expected, zaibatsu are nearly ten times as diversified as independent firms and more likely to have closed, privately-held ownership. Pairwise correlations in Table 2 are largely consistent with the summary statistics. As hypothesized, first entry is positively correlated with diversification, private ownership, and zaibatsu affiliation in general. Zaibatsu are positively correlated with diversification, closed ownership, and both innovative and heavy industries.²⁹

[Table 3 here]

However, as mentioned earlier, it may be more interesting to know why zaibatsu were able to lead the adoption of new technology than simply whether they were more likely to do so. To account for multiple shared features, I use a probit

²⁹ Heavy industries include chemicals, machinery, metal processing, and utilities, while light sectors include food processing, ceramics and glass, paper and wood products, textiles, and miscellaneous manufactures. The remainder are grouped together as non-manufacturing sectors. See Rosovsky, *Capital Formation*, p. 29.

model to identify contributions from individual characteristics. Results from the regressions are given in Table 3, and suggest that features associated with zaibatsu increase the likelihood of industry first entry as hypothesized. To ease interpretation, coefficients are reported as marginal effects, which measure the change in probability for an infinitesimal change in continuous variables and a discrete change in categorical variables. Thus, the specification in column 1 shows that a firm with operations in another industry (row 1) increases the probability of industry first entry by 3 percent and that a privately-held firm is 18 percent more likely to pioneer an industry compared to a publicly-traded one. I control for data heteroskedasticity by estimating and reporting Eicker-White standard errors, which are clustered by four-digit industry to account for industry-specific shocks.

Column 2 includes the interactions between the firm-level variables in column 1, and column 3 adds industry innovativeness and its interactions. Doing so shows that a firm's degree of diversification conveys an advantage to leading entry only in non-innovative industries, with single and multi-sector firms having comparable probabilities of pioneering an innovative industry. Columns 4 and 5 add indicator variables for major industry groups and five-year intervals, respectively. These help to reduce biases owing to differences between types of industries and changes in economic environment. The coefficients in these columns are qualitatively similar to the earlier ones, suggesting that the net effect of diversification to the likelihood of industry first entry up is positive and that the effect is stronger in non-innovative sectors. For all the specifications, being a private, non-traded firm increases the chances of industry pioneering by a smaller (but statistically significant) amount.

To consider the cumulative effect of all control variables, I calculate probabilities based on the features of a representative Meiji-era zaibatsu (privately-held, ten industries) and a contemporaneous unaffiliated firm (joint-stock, single sector). Accounting for all statistically significant variables in column 4, a typical zaibatsu is 70 percent more likely to lead entry into an innovative sector compared to its independent rival and 51 percent more likely to pioneer a non-innovative industry. These percentages obtain from taking the difference in first entry probabilities for the reference zaibatsu and independent firm, with a positive number indicating a higher relative likelihood for zaibatsu.

With time dummies (column 5), the findings reveal subtle, but substantive differences. While diversification continues to aid expansion into non-innovative sectors, it has the opposite effect for entry into innovative ones. Furthermore, being both highly diversified and privately-held reduce the likelihood of pioneering an industry. The difference between first entry probabilities for a typical zaibatsu and independent firm in an innovative industry is –15 percent (independent advantage); for a non-innovative industry, the difference is 40 percent (zaibatsu advantage).

[Figure 2 here]

These oppositely-sign likelihoods, with zaibatsu favoring non-innovative sectors and independent firms innovative ones, are graphically shown in Figure 2, where I substitute actual zaibatsu diversification over time in calculated probabilities. The relative likelihood of zaibatsu in pioneering a non-innovative industry remains comfortably positive and increases through the turn of the century. This is in contrast to its entry advantage in innovative sectors, which is negligible even early in the period and falls below that for an independent firm in 1876, when average zaibatsu diversification was around six industries. While it would be heroic to rely on this year estimate, the trends suggest that zaibatsu may have lost their technological leadership with regard to industry entry earlier than previously suspected.³⁰

To check whether the model is correctly specified, I use a Wald test of significance to see if the coefficients are jointly different from zero. All specifications pass at the one percent level of significance. I also test for functional form and omitted variable bias with a specification link test. This test takes the fitted values of the residual from the original regression, squares them, and reinserts them into the model as an additional variable. The modified model is estimated to check for significance in the new variable. The null is that the model has no omitted variables, and if correctly specified, the squares of the residuals should not be significant (since they would not show a pattern that could be explained with additional control variables). A significance level above five percent is generally

³⁰ Frankl, "Analysis," p. 1001.

interpreted as failure to reject the hypothesis (in other words, model is not incorrectly specified). All specifications are above this threshold, which means that the null hypothesis of no omitted variables cannot be rejected.

[Table 4 here]

How robust are these results, especially considering differences over time and in firm characteristics? To test the prediction that zaibatsu lose their first entry advantage later in the period, I take subsets of the data after various threshold years and rerun the column 5 specification in Table 3. For instance, in column A of Table 4, I use only establishments in new industries dating from 1876, when a representative zaibatsu is expected to retain its first entry advantage for non-innovative industries, but not for innovative ones. This appears to be the case, as the variables for diversification and private ownership continue to increase the probability of industry pioneering, but not when interacted with the variable for industry innovativeness.

By the end of the 1880s, however, zaibatsu appear to have no first entry advantage in any industry over their independent rivals. Column B contains the results for the sample of industries started after 1888, which marks the year by which most state-owned enterprises were privatized.³¹ As mentioned earlier, there is some controversy in whether government favoritism to zaibatsu provided the impetus for their industrial leadership. Notwithstanding this paper's exclusion of firms established by the government so as to identify only private sector activity, the privatization program may have affected contemporaneous zaibatsu expansion into other sectors. I find that after the 1880s zaibatsu are statistically indistinguishable from their independent rivals in the probability of pioneering an industry.

Similar results, shown in column C, obtain for the set of new industries started on or after 1893, when the government promulgated a new Commercial Code. Considered a significant milestone for Japanese investors and financial markets, the code provided a legal framework to protect property rights; thus, entrepreneurs may have found it easier to finance investments externally, offsetting

³¹ Morck and Nakamura, "Business groups," Table 1.

the internal financing advantage of zaibatsu. This appears to be the case as none of the features associated with zaibatsu significantly affects the probability of first entry for this sample of industries.

How much of the first entry advantage can be attributed to diversification and ownership as opposed to differences in the distributions of these variables between zaibatsu and independent firms? A common method used to isolate individual contributions between two groups is via Blinder-Oaxaca decomposition, which uses a single set of coefficient estimates in separate regressions for both group subsamples.³² Taking the difference between the two resulting predictions for each variable allows one to attribute the percentage that can be explained solely by that variable uncontaminated by group distributional dissimilarities. The Fairlie decomposition extends this methodology to nonlinear estimation, which I use to obtain the results in columns D through F.³³

To calculate variable contribution, I use coefficients estimated from the pooled sample of zaibatsu and independent firms and match pairs of observations from the two groups.³⁴ Given the smaller number of zaibatsu firms, I take 1,000 random samples of 32 independent firms to match with the zaibatsu observations and report the average from these samples. To ease interpretation and obtain meaningful estimates from each firm group, I do not include interaction terms in the probit regression; otherwise, the specification is the same as that in column 5 from Table 3.

As shown in row 12 of column D, the difference in predicted first entry likelihoods between the two firm groups is 0.306, of which the included control variables explain 0.284 (or 93 percent). In particular, the net effect of diversification explains 0.139 (45 percent) of the total difference while non-traded ownership explains 0.054 (18 percent). Since the individually calculated differences are sensitive to the order of variables in the specification, I randomize all the independent variables to obtain the estimates given in column E, which are

³² See Blinder, "Wage discrimination" and Oaxaca, "Male-female wage."

³³ See Fairlie, "The absence."

³⁴ The choice of which set of coefficients (ie, group A, B, or pooled) is arbitrary. I use coefficients from the pooled sample to maximize sample size; estimates derived from coefficients of the independent firm sample are qualitatively similar.

qualitatively similar to those in the previous column. Finally, instead of assuming a normal distribution for the data, I substitute a logit model for the probit, and obtain comparable results, shown in column F. Altogether, the Fairlie decomposition results are consistent with the hypothesis that zaibatsu possessed characteristics that appear to facilitate first entry into new industries.

VI

One interpretive concern is that while zaibatsu may have been more likely to lead entry, their absolute number of first entrants is small, bringing into question their overall impact. This observation assumes that zaibatsu and independent firms were similar when in all probability a single zaibatsu affiliate was much larger and more productive. Since this paper employs qualitative measures of industrial activity, it does not directly address this point. Nevertheless, as listed in the appendix, many industries that zaibatsu pioneered were capital-intensive or large scale, and thus out of reach for most independent investors. These industries may also have been important for production in other sectors (for example, metal mining for machine manufacture), providing an alternative means for zaibatsu to lead industrialization even with large establishment numbers or even first entry. That said, given the relatively meager number of firms and industries used in earlier studies for this time period, one of the strengths of the current dataset is its inclusion of independent firms that would otherwise have no record, thus reducing some sample bias. Furthermore, while it may be heroic to use these data for reliable point estimates of variable effects, they nevertheless serve the purpose of comparing firm activity and technology adoption via qualitative measures like entry and industry formation.

Although the main finding of this paper supports the view that zaibatsu assisted the development of industry, it also disputes the notion that they were necessarily vanguards of innovation and suggests a loss of leadership over time. What accounts for these seemingly important omissions in earlier research? Besides data unavailability, an additional explanation may lie in the emphasis on firm characteristics as opposed to industry-level determinants of performance, and inductive reasoning based on case studies. This paper itself leads with stylized facts about zaibatsu's preponderant size and resource access that were deemed critical to

innovation and industrial expansion. These identifying features, however, may be anachronistic and misleading. As mentioned in the introduction, zaibatsu were less able to attain scale economies because their holdings were so diverse. This applied especially to those zaibatsu that began in trading, shipping, and finance. Thus, additional study of inter-industry synergies and their degree of relatedness for firms in the Meiji Period may better identify firm behavior and industry activity by the stage of development.

Similarly, interfirm linkages may have been a way for independent entrepreneurs to combat conglomerate dominance or to overcome capital market deficiencies. This was the case in postwar Japan, where independent firms unable to internalize transaction costs through merger used networks to increase efficiency. This scenario may have applied to prewar Japan as well, and could be explored by expanding the current dataset into panel form. A panel dataset providing dates of ownership change or reorganization may also be useful for studying firm longevity in the Meiji Period, complementing this paper's focus on firm establishment. This would complement the emerging literature on determinants of firm survival (eg, productivity differences, trade) by including the experience of firms in developing economies as well as a historical perspective.

This paper also remains silent on two important influences: government and trade. Among other policies, the government sponsored model factories at the beginning of the Meiji Period to jump-start industrialization. As mentioned above, it later privatized these enterprises (with many purchased by zaibatsu) and indirectly supported industry through subsidies and contracts. A major impediment to assessing the government's contribution is the difficulty in disentangling direct and indirect support. Nevertheless, it may be possible to use this dataset to explore the evolution of sectors started by either the government or the private sector, comparing characteristics like rate of entry or factor intensity. One can then better judge the efficacy of state initiative during early economic development.

Not to be neglected is the international context in which Japan industrialized, considering that its rapid growth relied on technology imports and commodity exports. Using commodity trade flow and Meiji firm establishment data, one may be able to gauge the importance of trade by comparing industry growth rates based on export shares. This relationship may also help to explain the

remarkable resilience of traditional sectors that grew in tandem with the country's increasingly advanced industries.

References

Asia Research, *An Outline of Japanese Industry*. Tokyo, Japan: Ajia Kyokai, 1955.

Blinder, Alan, "Wage discrimination: reduced form and structural variables," *Journal of Human Resources* 8: 436-455, 1973.

Dodwell Marketing Consultants, *Industrial Groupings in Japan*. Tokyo, Japan: Dodwell Marketing Consultants, 1975.

Fairlie, Robert, "The absence of the African-American owned business: an analysis of the dynamics of self-employment," *Journal of Labor Economics* 17(1): 80-108, 1999.

Frankl, Jennifer, "An analysis of Japanese corporate structure, 1915-1937." *Journal of Economic History* 59, no. 4 (1999): 997-1015.

Fruin, Mark, *The Japanese Enterprise System*. Oxford, United Kingdom: Clarendon Press, 1992.

Gerschenkron, Alexander, *Economic Backwardness in Historical Perspective: A Book of Essays*. Cambridge, Massachusetts: Harvard University Press, 1962.

Mitsubishi Public Affairs Committee, *A Brief History of Mitsubishi*. Tokyo, Japan: Mitsubishi Public Affairs, 1990.

Miyajima, Hideaki, Yusuke Omi, and Nao Saito, "Corporate governance and performance in twentieth-century Japan." *Business History Conference On-Line*, [http://www.thebhc.org/publications/ BEHonline/2003/Miyajimaomisaito.pdf](http://www.thebhc.org/publications/BEHonline/2003/Miyajimaomisaito.pdf), 2003.

Morck, Randall and Masao Nakamura, "Business groups and the big push: Meiji Japan's mass privatization and subsequent growth." *Enterprise and Society* 8, (2007): 543-601.

Morikawa, Hidemasa, *Zaibatsu, The Rise and Fall of Family Enterprise Groups in Japan*. Tokyo, Japan: University of Tokyo Press, 1992.

Nakagawa, Keiichiro, "Business strategy and industrial structure in pre-World-War-II Japan." In *The International Conference on Business History: Strategy and Structure of Big Business*. Vol. 1. Edited by Keiichiro Nakagawa. Shizuoka, Japan: Fuji Education Center, 1974.

Oaxaca, Ronald, "Male-female wage differentials in urban labor markets," *International Economic Review* 14: 693-709, 1973.

Ohkawa, Kazushi, *Nihon Choki Tokei Soran* [Long-Term Historical Statistics of Japan]. 5 vols. Tokyo, Japan: Japan Statistical Association, 1987.

Ohkawa, Kazushi and Henry Rosovsky, *Japanese Economic Growth, Trend Acceleration in the Twentieth Century*. Palo Alto, California: Stanford University Press, 1974.

Ohsono, Tomokazu, *Charting Japanese Industry*. Cassell, 1995.

Okazaki, Tetsuji, "The role of holding companies in prewar Japanese economic development: rethinking zaibatsu in perspectives of corporate government." *Social Science Japan Journal* 4, (2001): 243-268.

Rosovsky, Henry, *Capital Formation in Japan*. New York, New York: The Free Press, 1961.

Russell, Oland, *The House of Mitsui*. Boston, Massachusetts: Little, Brown and Company, 1939.

Statistics Bureau of Japan, *Standard Industrial Classification of Japan*. Tokyo, Japan: Statistics Bureau of Japan, 1984.

Yagura, Shintaro and Yoshiro Ikushima, *Shuyo Kigyo no Keifuzu* [Genealogies of Major Corporations]. Tokyo, Japan: Yushodo Publishing, 1986.

Yushodo Publishing, *Eigyō Hokokusho Shusei* [Business Reports Collection]. First series. Tokyo, Japan: Yushodo Film Publication, 1966.

Table 1: Summary Statistics

	All Estab.	Zaibatsu (1 st entries)	Unaffiliated (1 st entries)
New JSIC4 industries	1,478	32 (12)	1,446 (97)
Innovative industries	341	24 (8)	317 (46)
Average diversification per firm		9.8	1.0
Firm ownership			
Joint-stock	1,018	6 (2)	1,012 (48)
Non-traded	166	26 (10)	140 (32)
Establishments by capital intensity			
Light	145	0 (0)	145 (31)
Heavy	103	8 (6)	95 (35)
Non-manufacturing	1,230	24 (6)	1,206 (31)

Source: see text

Table 2: Correlations

	FIRST	DIV.	NONTR.	ZAIB.	INNOV.	HEAVY
First entry	1					
Diversification	0.179*	1				
Non-traded firm	0.264*	0.261*	1			
Zaibatsu affiliation	0.172*	0.829*	0.323*	1		
Innovative JSIC4	0.200*	0.190*	0.161*	0.183*	1	
Heavy sector	0.355*	0.174*	0.190*	0.105*	0.214*	1
Light sector	0.187*	-0.046	0.167*	-0.049	0.348*	-0.098*

Significance level: *5 percent

Source: see text

Table 3: Probit Results

Dependent variable: Pr(Y=1 st entry)	(1)	(2)	(3)	(4)	(5)
Diversification	0.031** (0.012)	0.064* (0.034)	0.197*** (0.080)	0.077** (0.045)	0.042* (0.030)
Diversification ²	-0.002** (0.001)	-0.005 (0.003)	-0.028** (0.013)	-0.010 (0.007)	-0.005 (0.005)
Non-traded firm	0.181*** (0.068)	0.193*** (0.071)	0.018*** (0.096)	0.070*** (0.048)	0.028 (0.033)
Innovative industry			0.071 (0.050)	-0.023 (0.021)	-0.031** (0.018)
<i>Interaction terms</i>					
Diversification · Non-traded		-0.043 (0.034)	-0.008 (0.029)	0.025 (0.026)	0.031* (0.023)
Diversification · Innovative			-0.187*** (0.090)	-0.093** (0.053)	-0.061*** (0.037)
Diversification ² · Non-traded		0.003 (0.003)	-0.000 (0.003)	-0.003* (0.003)	-0.003** (0.002)
Diversification ² · Innovative			0.028*** (0.014)	0.013* (0.008)	0.007 (0.005)
Non-traded · Innovative			-0.019 (0.035)	-0.005 (0.024)	-0.004 (0.021)
Industry fixed effects				included	included
Time fixed effects					included
Observations	1,184	1,184	1,184	1,184	1,184
Pseudo-R ²	0.108	0.112	0.158	0.325	0.406

Significance level: *10 percent **5 percent ***1 percent

Notes: Results reported as marginal effects, with robust standard errors in parentheses and clustered by 4-digit industry.

Source: see text

Table 4: Robustness Checks

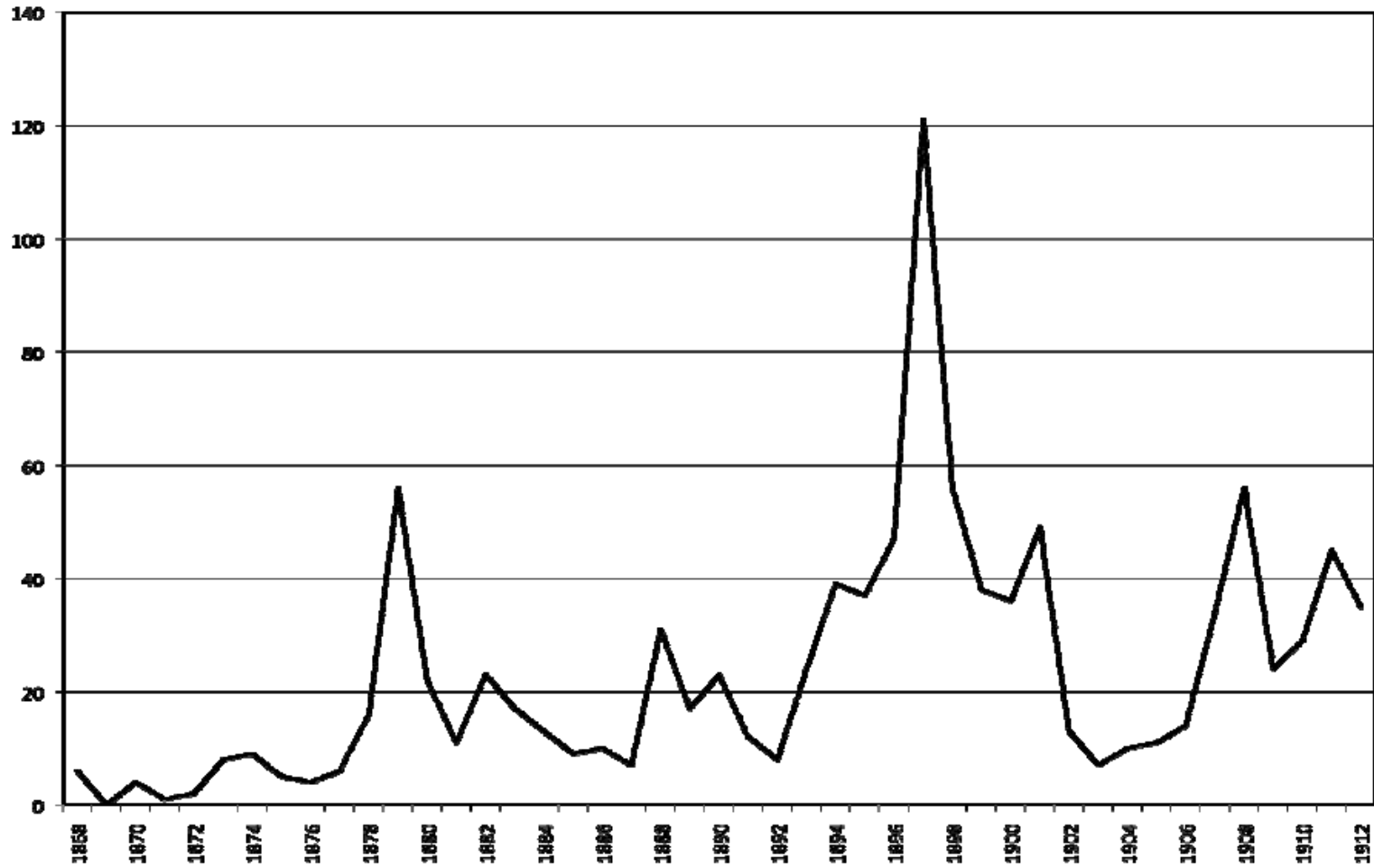
Dependent variable: Pr(Y=1 st entry)	(A)	(B)	(C)	(D)	(E)	(F)
Diversification	0.414*** (0.128)	0.366 (0.271)	0.209 (0.246)	0.262*** (0.087)	0.304*** (0.117)	0.253*** (0.088)
Diversification ²	-0.153*** (0.054)	0.002 (0.006)	0.002 (0.006)	-0.123*** (0.036)	-0.198*** (0.074)	-0.119*** (0.042)
Non-traded firm	0.181** (0.102)	0.044 (0.158)	-0.134 (0.149)	0.054* (0.030)	0.039 (0.024)	0.055* (0.030)
Innovative industry	-0.099 (0.073)	0.110 (0.182)	-0.054 (0.185)	-0.086** (0.034)	-0.052** (0.026)	-0.095*** (0.033)
<i>Interaction terms</i>						
Diversification · Non-traded	-0.274* (0.137)	0.018 (0.554)	0.040 (0.376)			
Diversification · Innovative	-0.122 (0.120)	-0.391 (0.542)	-0.265 (0.256)			
Diversification ² · Non-traded	0.153*** (0.053)	dropped	dropped			
Diversification ² · Innovative	dropped	dropped	dropped			
Non-traded · Innovative	-0.062 (0.063)	-0.057 (0.283)	0.144 (0.270)			
Industry fixed effects	included	included	included	included	included	included
Time fixed effects	≥1876	≥1889	≥1893	included	included	included
Explained contribution/Difference				0.284/0.306	0.284/0.306	0.275/0.306
Observations	416	114	99	1,184	1,184	1,184
Pseudo-R ²	0.316	0.142	0.180	0.389	0.389	0.391

Significance level: *10 percent **5 percent ***1 percent

Notes: Results in columns A to C reported as marginal effects, with robust standard errors in parentheses and clustered by 4-digit industry. Results in columns D to F based on contributions averaged from 1,000 random samples, with standard errors in parentheses and calculated using the delta method.

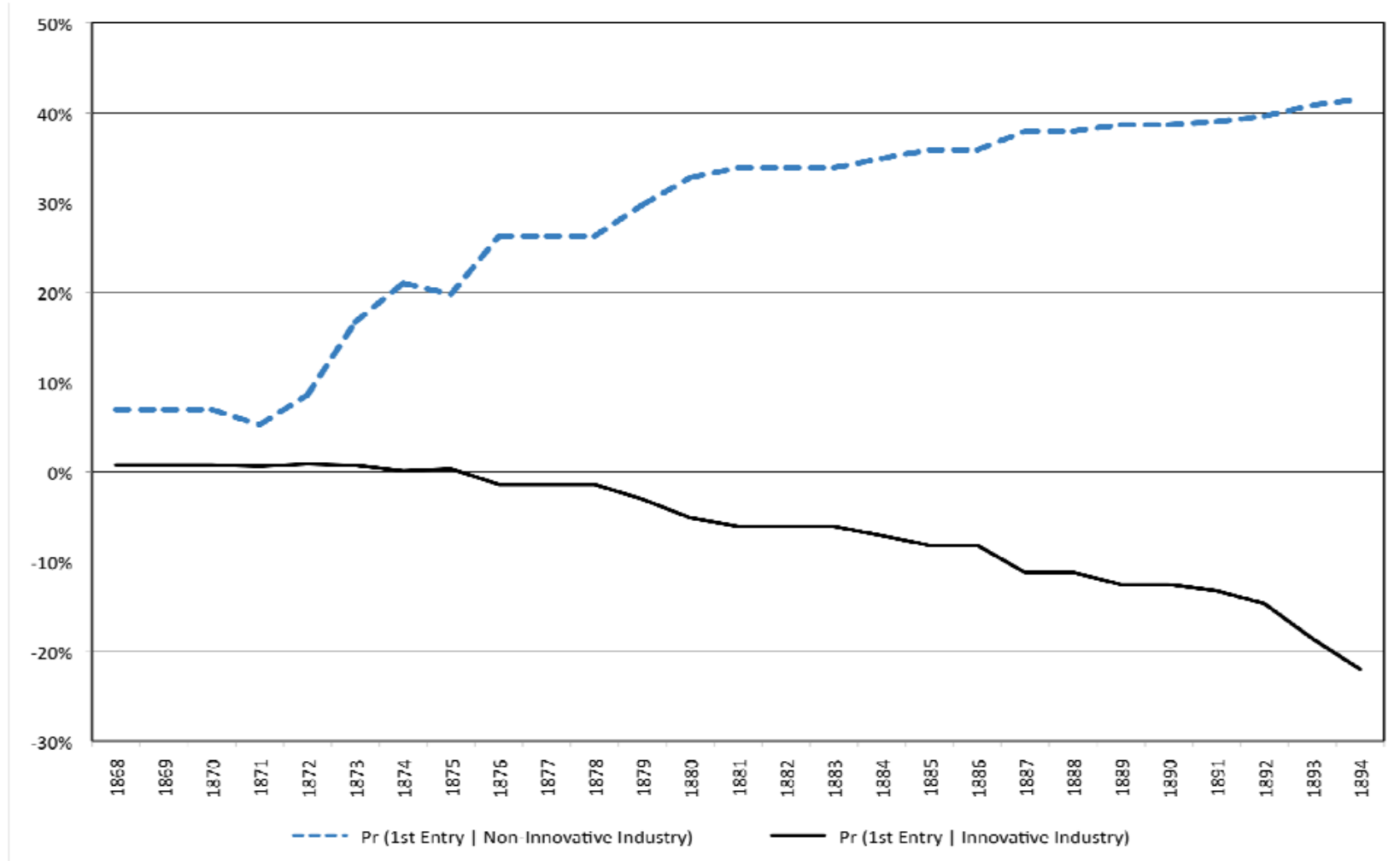
Source: see text

Figure 1: Firm startups in the Meiji Period



Source: see text

Figure 2: Relative First Entry Probabilities



Source: see text

Appendix: List of New Industries in Meiji Period

Industry Name	JSIC4	Year
Coal mining	611*^	1868
Cotton/spun rayon fabric weaving	1441*^	1868
Beer	1322	1869
Foreign exchange bank	6124*	1869
Joint-stock life insurance company	6711*	1869
Machine-reeled raw silk	1411*	1870
Glass containers	2514*	1871
Valves and fittings	2992^	1871
Fabricated pipe and fittings	2993^	1871
Ball and roller bearings	2994^	1871
Piston rings	2995*^	1871
Mold and dies, parts, and accessories	2996^	1871
Coastwise freight transport	4323*^^	1871
National railway	4011*^	1872
Postal services	4711*	1872
Water supply installation, draining work	1133*	1873
Cement	2521*^	1873
Ocean transport	4311^^	1873
Ordinary bank	6121^^	1873
Fired bricks	2551*	1875
Foreign style paper	1821	1876
Food processing machinery	2961*^	1876
General civil engineering, building works	911*	1877
Other silk reeling plant	1419^	1877
Construction and mining machinery	2931*^	1877
Spinning machinery	2951*^	1877
Wood working machinery	2962^	1877
Wool spinning mill	1423*^	1878
Rice cleaning	1261	1879
Wheat flour	1263*^	1879
Nitric, phosphoric fertilizers	2011*	1879
Credit cooperative association	6313*	1879
Joint-stock fire/marine insurance company	6721*^^	1879
Flat glass	2511	1880
Water supply	3911*^^	1880
Overseas loan and investment institution	6142*	1880
Credit association and related federation	6312^^	1880
Merchandise forwarding	4621*	1881
Commercial and industrial cooperative bank	6314	1881
Paperboard	1822	1882

Central bank	6111*^	1882
Small business finance corporation	6315	1882
Securities exchange	6631	1882
Medical product preparations	2062*	1883
Canned seafood, seaweed	1221*	1884
Manufactured ice	1341*	1884
Hemp spinning mill	1425	1884
Copper smelting and refining, primary	2711*^^	1884
Power station	3611*	1884
Soda bicarbonate	2021*	1885
Dairy products	1212*	1886
Other paper products	1849	1886
Matches	3486*^	1886
Other electricity establishment	3619	1886
Lead and zinc metal mining	522*^^	1887
Steel pipes and tubes	2644	1887
Lead pencils	3443*	1887
Postal order and transfer savings institution	6141^	1887
Crude petroleum extraction	711*	1888
Twisting yarns	1431*	1888
Paints	2054*	1888
Watches, clocks, and parts, not watchcases	3271*	1888
Other musical instruments	3429*	1888
Local railway	4021*	1888
Light vehicle passenger transport	4141*	1888
Silk spinning mill	1424	1889
Building brick	2532*	1889
Public financial institution for agriculture, forestry, and fishing	6241*^	1889
Unrefined sugar	1251	1890
Soft drinks, carbonated water	1311*	1890
Transport agency	4631*	1890
Textile sanitary fabric	1498*	1892
Machine dyed/finished silk, rayon fabrics	1462	1893
Mutual life insurance company	6712	1894
Plastics	2037*	1895
Asbestos mining	892*	1896
Sugar refining	1252	1896
Wool fabric weaving	1443	1896
Printing ink	2055	1896
Railroad cars	3121	1896

Long term credit bank	6123	1896
Development financial institution	6143	1896
Agricultural cooperative	6231*	1896
Canvas products	1593*	1897
Printing, not mimeograph	1931	1897
Synthetic dyes, organic pigments	2036	1897
Petroleum refining	2111*	1897
Wire drawing	2648	1897
Coke	2131*^^	1898
Aluminum smelting and refining, primary	2716	1899
Trust bank	6122*	1899
Basic petrol chemicals	2031	1900
Taxicab operators	4112	1900
Telephone and telegraph, not broadcast	4721*	1901
Other industrial organic chemicals	2039	1902
Motor vehicle bodies and trailers	3112	1896
Bicycles and parts	3131*	1903
Metallic springs	2892*	1904
Power and distribution transformer	3012	1904
Other stone, sand, gravel quarrying	819*	1905
Compound chemical fertilizers	2012*^^	1905
Nails	2871*	1905
Other metal smelting and refining, secondary	2729*^	1906
Electric bulbs	3031	1906
Sulphur mining	831*	1907
Distilled alcohol	1324	1907
Basic livestock feed	1352*	1907
Leather tanning, finishing	2411*	1907
Looms, knitting machinery	2952	1907
Dyeing and finishing machinery	2953	1907
Generators, motors, rotating electrical machinery	3011	1907
Tramway	4022	1907
Refrigerated warehousing	4521*	1907
Fire and marine reinsurance company	6724	1907
General sawing and planing mill	1611	1908
Rayon, acetate fiber	2041	1908
Coating metal products	2862*	1908
Medical material preparations	2061	1910
Call loan and bill brokerage, not securities	6411	1909
Pastries, cakes	1272	1910

Other fabric weaving	1449	1910
Compressed, liquefied gases	2024	1910
Soaps and synthetic detergents	2052	1910
Internal combustion engine	2913*^^	1910
Other chemical fertilizer mining	839	1911
Organic fertilizer	1353	1912
Other industrial inorganic chemicals	2029	1912
Fatty acids, hydrogenated oils, glycerin	2051	1912
Ferro-alloys	2623	1912

*: innovative industry

^: government pioneered

^^: zaibatsu pioneered

CENTER ON JAPANESE ECONOMY AND BUSINESS
Working and Occasional Papers

(Papers can be downloaded free of charge at: www.gsb.columbia.edu/cjeb/research/ac)

Last update: March 18, 2009

WORKING PAPERS

- 2009
- 278 **John P. Tang**, Technological Leadership and Late Development: Evidence from Meiji Japan, 1868-1912
- 277 **Kenn Ariga and Ryosuke Okazawa**, Labor Immobility in Japan: Its causes and consequences
- 276 **Robert Barsky**, The Japanese Asset Price Bubble: A 'Heterogeneous' Approach
- 275 **Robert Dekle and Kyoji Fukao**, The Japan-U.S. Exchange Rate, Productivity, and the Competitiveness of Japanese Industries
- 274 **Philip R. Lane**, International Financial Integration and Japanese Economic Performance,
- 273 **Joe Peek**, The Contribution of Bank Lending to the Long-Term Stagnation in Japan
- 272 **Takeo Hoshi, Satoshi Koibuchi, and Ulrike Schaede**, Changes in Corporate Restructuring Processes in Japan, 1981-2007
- 271 **Diego Comin**, An Exploration of the Japanese Slowdown during the 1990s
- 270 **John Muellbauer and Keiko Murata**, Consumption, Land Prices and the Monetary Transmission Mechanism in Japan
- 269 **Maurice Obstfeld**, The Yen and Japan's Economy, 1985-2007
- 268 **Ryo Kambayashi and Takao Kato**, The Japanese Employment System after the Bubble Burst: New Evidence
- 267 **David E. Weinstein and Christian Broda**, Exporting Deflation? Chinese Exports and Japanese Prices
- 2008
- 266 **Hugh Patrick**, Japan's Economic Recovery Stalled
- 265 **Richard Katz**, A Nordic Mirror: Why Structural Reform Has Proceeded Faster in Scandinavia Than in Japan
- 264 **Robert Grondine**, Observations on the Current State of Corporate Governance in Japan
- 263 **Nobuyuki Kinoshita**, The Economics of Japan's Postal Services Privatization
- 262 **Keiko Ito and Sébastien Lechevalier**, The Evolution of the Productivity Dispersion of Firms – A Reevaluation of Its Determinants in the Case of Japan
- 261 **Terutomo Ozawa**, History Repeats Itself: Evolutionary Structural Change and TNCs' Involvement in Infrastructure Overseas, Flying-Geese Style
- 260 **Sanghoon Ahn, Kyoji Fukao, and Keiko Ito**, The Impact of Outsourcing on the Japanese and South Korean Labor Markets: International Outsourcing of Intermediate Inputs and Assembly in East Asia
- 259 **Keiko Ito, Moosup Jung, Young Gak Kim, and Tangjun Yuan**, A Comparative Analysis of Productivity Growth and Productivity Dispersion: Microeconomic Evidence Based on Listed Firms from Japan, Korea, and China
- 2007
- 258 **Yasushi Hamao, Takeo Hoshi, and Tetsuji Okazaki**, Listing Policy and Development of the Tokyo Stock Exchange in the Pre-War Period
- 257 **Ryuichi Nakagawa and Hirofumi Uchida**, Herd Behavior by Japanese Banks After Financial Deregulation in the 1980s
- 256 **Jie Gan**, Collateral, Debt Capacity, and Corporate Investment: Evidence from a Natural Experiment
- 255 **Jie Gan**, The Real Effects of Asset Market Bubbles: Loan- and Firm-Level Evidence of a Lending Channel
- 254 **Christian Broda, Nuno Limão, and David E. Weinstein**, Optimal Tariffs: The Evidence
- 253 **Hugh Patrick**, Japan's Economy: The Idiosyncratic Growth Continues
- 252 **Christian Broda and David E. Weinstein**, Defining Price Stability in Japan: A View from America
- 251 **Terutomo Ozawa**, Professor Kiyoshi Kojima's Contributions to FDI Theory: Trade, Structural Transformation, Growth, and Integration in East Asia
- 250 **Hiroki Yamakawa**, A Practical Analysis of Transfer Pricing Methodologies for Bilateral Advance Pricing Arrangements
- 2006
- 249 **Hugh Patrick**, Japan's Economy: Finally Finding Its Way to Full Employment and Sustained Growth
- 248 **Ulrike Schaede**, Competition for Corporate Control: Institutional Investors, Investment Funds, and Hostile Takeovers in Japan
- 247 **Ulrike Schaede**, The Strategic Logic of Japanese *Keiretsu*, Main Banks and Cross-Shareholdings, Revisited
- 246 **Ricardo Caballero, Takeo Hoshi and Anil K Kashyap**, Zombie Lending and Depressed Restructuring in Japan.
- 245 **Zekeriya Eser and Joe Peek**, Reciprocity and Network Coordination: Evidence from Japanese Banks.
- 244 **Hugh Patrick**, Japan: Another Economic Recovery, New Political Terrain.
- 243 **Ferenc A. Sanderson**, Characteristics of the Hedge Fund Industry in Japan.
- 2005
- 242 **Mariko Fujii and Makoto Takaoka**, Forecasting Skewness in Stock Returns: Evidence from Firm-Level Data in Tokyo Markets
- 241 **Robert A. Myers**, Challenges for Japanese Universities' Technology Licensing Offices—What Technology Transfer in the United States Can Tell Us
- 240 **Takatoshi Ito**, Political Economy of Competition Policy in Japan: Case of Airline Services

- 239 **Christina L. Ahmadjian**, Stability and Change in Embedded Relationships: Broken Ties in Japanese Automotive Keiretsu
- 238 **Nada Mora**, The Effect of Bank Credit on Asset Prices: Evidence from the Japanese Real Estate Boom during the 1980s
- 237 **Koichi Hamada and Asahi Noguchi**, The Role of Preconceived Ideas in Macroeconomic Policy: Japan's Experiences in the Two Deflationary Periods
- 236 **Takatoshi Ito**, Monetary Policy Beyond the Zero Interest Rate Policy Under Deflation
- 235 **Hiroyuki Chuma, Takao Kato and Isao Ohashi**, Worker Discontent, Voice, and EI Programs in Japan
- 234 **Masami Imai**, Market Discipline and Deposit Insurance Reform in Japan
- 233 **Takatoshi Ito and Hugh Patrick**, Problems and Prescriptions for the Japanese Economy: An Overview
- 232 **Franklin R. Edwards**, New Proposals to Regulate Hedge Funds: SEC Rule 203(b)(3)-2
- 231 **Takatoshi Ito and Frederic Mishkin**, Monetary Policy in Japan: Problems and Solutions
- 230 **Hugh Patrick**, The Japanese Recovery and Growth Not Yet Assured
- 2004
- 229 Takatoshi Ito, Interventions and Japanese Economic Recovery
- 228 Christian Broda and David E. Weinstein, Happy News from the Dismal Science: Reassessing Japanese Fiscal Policy and Sustainability
- 227 Robert A. Madsen, What Went Wrong Aggregate Demand, Structural Reform, and the Politics of 1990s Japan
- 226 **Michael Smitka**, Japanese Macroeconomic Dilemmas The Implications of Demographics for Growth and Stability
- 225 **Lee Branstetter**, Is Foreign Direct Investment a Channel of Knowledge Spillovers? Evidence from Japan's FDI in the United States
- 224 **Jie Gan**, Collateral Channel and Credit Cycle: Evidence from the Land Price Collapse in Japan
- 223 **Chung I. Wang**, The financial strategies of Japanese multinational enterprises and internal capital market
- 222 **Donald Davis and David Weinstein**, A Search for Multiple Equilibria in Urban Industrial Structure
- 2003
- 221 **Christina Ahmadjian and Jaeyong Song**, Corporate Governance Reform in Japan and South Korea
- 220 **Hugh Patrick**, Evolving Corporate Governance in Japan
- 219 **Minako Fujiki**, Inflation Targeting Discussions in Japan – unconventional monetary policy under deflation: How People Have Argued; Why the BoJ Opposes Adoption
- 218 **Adam Posen and Kenneth Kuttner**, The Difficulty of Discerning What's Too Tight: Taylor Rules and Japanese Monetary Policy
- 217 **Adam Posen**, It Takes More Than a Bubble to Become Japan
- 216 **Naotaka Kawakami**, The difference in taxation on financial transactions between Japan and the United States: Can the U.S. system and theory be the model?
- 215 **Naotaka Kawakami**, What Does the Consumption Tax Mean to Japanese and U.S. Society?
- 214 **Tokuo Iwaisako**, Stock Index Autocorrelation and Cross-autocorrelations of the Size-Sorted Portfolios in the Japanese Market
- 213 **Minoru Kobayashi, Takeshi Hiromatsu, Naoki Tsubone, Manabu Kurita, and Gosei Ohira**, Economical Impacts on IT to Industries in Japan
- 212 **William V. Rapp and Mazhar ul Islam**, Putting E-Commerce to Work: The Japanese Convenience Store Case
- 211 **Mark J. Scher**, Policy Challenges and the Reform of Postal Savings in Japan
- 210 **Takao Kato and Katsuyuki Kubo**, CEO Compensation and Firm Performance in Japan: Evidence from New Panel Data on Individual CEO Pay
- 2002
- 209 **Lee Branstetter and Yoshiaki Nakamura**, Has Japan's Innovative Capacity Declined?
- 208 **David O. Beim**, Japan's Internal Debt
- 207 **Kengo Inoue**, Choices for Japanese Fiscal Policy
- 206 **Takero Doi and Takeo Hoshi**, Paying for the FILP
- 205 **Terutomo Ozawa**, Pax-Americana-led Macro-Clustering and Flying-Geese Style Catch-Up in East Asia: Mechanisms of Regionalized Endogenous Growth
- 204 **Robert Dekle and Heajin Ryoo**, Exchange Rate Fluctuations, Financing Constraints, Hedging, and Exports: Evidence from Firm Level Data
- 203 **Christina Ahmadjian and Gregory Robbins**, A Clash of Capitalisms: Foreign Shareholders and Corporate Restructuring in 1990s Japan
- 202 **David Flath and Tatsuhiko Nariu**, Parallel Imports and the Japan Fair Trade Commission
- 201 **David Flath**, Taxicab Regulation in Japan
- 200 **David Flath**, The Japanese Distribution Sector in Economic Perspective: The Large Store Law and Retail Density
- 199 **David Flath**, Distribution Keiretsu, FDI and Import Penetration in Japan
- 198 **Yasushi Hamao, Jianping Mei, and Yexiao Xu**, Idiosyncratic Risk and Creative Destruction in Japan
- 197 **Hee-Joon Ahn, Jun Cai, Yasushi Hamao, and Richard Y.K. Ho**, The Components of the Bid-Ask Spread in a Limit-Order Market: Evidence from the Tokyo Stock Exchange
- 196 **Donald R. Davis and David E. Weinstein**, Technological Superiority and the Losses From Migration
- 195 **Linda Edwards and Margaret Pasquale**, Women's Higher Education in Japan: Family Background, Economic Factors, and the Equal Employment Opportunity Law
- 194 **Andrew Carverhill and Ronald Schramm**, International Market Segmentation, and the CME Quanto Nikkei Future

2001

- 193 Terutomo Ozawa**, The hidden side of the flying geese catch-up model: Japan's dirigiste institutional setup and a deepening financial morass
- 192 Donald Davis and David Weinstein**, Bones, Bombs and Break Points: The Geography of Economic Activity
- 191 William V. Rapp**, Nationwide Financial Services
- 190 Lee Branstetter**, Is Foreign Direct Investment a Channel of Knowledge Spillovers? Evidence from Japan's FDI in the U.S.
- 189 Christina Ahmadjian and Patricia Robinson**, Downsizing and the Deinstitutionalization of Permanent Employment in Japan
- 188 Christina Ahmadjian**, Changing Japanese Corporate Governance
- 187 Kazuo Sato**, From Fast to Last: The Japanese Economy in the 1990s
- 186 Hugh Patrick**, From Cozy Regulation to Competitive Markets: The Regime Shift of Japan's Financial System
- 185 Takao Kato**, The End of Lifetime Employment in Japan? Evidence from National Surveys and Field Research
- 184 Takao Kato**, The Recent Transformation of Participatory Employment Practices in Japan
- 183 William Rapp**, Nomura Research Institute
- 182 Robert Dekle**, Demographic Destiny, Per Capita Consumption, and the Japanese Saving-Investment Balance

2000

- 181 Maria Vassalou**, The Fama-French factors as proxies for fundamental economic risks
- 180 Yasushi Hamao and Jianping Mei**, Living With the "Enemy": An Analysis of Foreign Investment in the Japanese Equity Market
- 179 Yasushi Hamao and Takeo Hoshi**, Bank Underwriting of Corporate Bonds: Evidence from Japan after the Financial System Reform of 1993.
- 178 William Rapp**, International Retail Banking: The Citibank Group
- 177 William Rapp**, Automobiles: Toyota Motor Corporation
- 176 Shingo Nakazawa**, Corporate Investment in Japan: How Important are Financial Factors?
- 175 Nobuyoshi Yamori & Narunto Nishigaki**, Electronic Money Projects in Japan
- 174 William Rapp**, Steel: Nippon Steel, K.K.

1999

- 173 Nobuhiko Hibara**, Food Retailing: Ito-Yokado Group
- 172 William V. Rapp**, Steel: Tokyo Steel, K.K.
- 171 Yasushi Hamao, Frank Packer & Jay Ritter**, Institutional Affiliation and the Role of Venture Capital: Evidence from Initial Public Offerings in Japan
- 170 William V. Rapp**, Retail Banking: Sanwa Bank
- 169 William V. Rapp**, Life Insurance: Meiji Life, K.K.
- 168 Robert Dekle & Koichi Yamada**, On the Development of Rotating Credit Associations in Japan
- 167 Kazuo Sato**, Japan at a Crossroads
- 166 Kazuo Sato**, Japanese-Style Capitalism
- 165 David Weinstein and Robert Lawrence**, Trade and Growth: Import-Led or Export-Led? Evidence from Japan and Korea
- 164 David Weinstein**, Historical, Structural, and Macroeconomic Perspectives on the Japanese Economic Crisis

- 163 Hiroshi Amari**, Pharmaceuticals: Takeda
- 162 Christos Cabolis**, Semiconductors: NEC

1998

- 161 Hiroshi Amari**, Pharmaceuticals: Merck
- 160 William V. Rapp**, Gaining and Sustaining Long-Term Advantage Through Information Technology: The Emergence of Controlled Production
- 159 Mark Tilton**, Antitrust Policy and Japan's International Steel Trade
- 158 Takao Kato**, Participatory Employment Practices in Japan: Past, Present and Future
- 157 Ulrike Schaeede**, Self-Regulation and the Sanctuary Strategy: Competitive Advantage through Domestic Cooperation by Japanese Firms
- 156 Mariko Sakakibara**, Knowledge Sharing in Cooperative Research and Development
- 155 Shigeru Asaba and Marvin Lieberman**, Why Do Firms Behave Similarly? A Study on New Product Introduction in the Japanese Soft-Drink Industry
- 154 Hiroshi Ishida, Kuo-Hsien Su and Seymour Spilerman**, Models of Career Progression in Japanese and U.S. Organizations
- 153 Hugh Patrick**, Japan's Economic Misery: What Next?
- 152 David Flath**, Japanese Technology Policy
- 151 David Flath**, A Perspective on Japanese Trade Policy and Japan-US Trade Friction
- 150 David Flath**, Japan's Labor Unions
- 149 David Flath & Tatsuhiko Nariu**, Demand Uncertainty and Price Maintenance
- 148 Frederic S. Mishkin**, Promoting Japanese Recovery
- 147 Hugh Patrick**, Why I Expect Japan to Prevail: Ruminations on Morishima
- 146 Hugh Patrick**, The Causes of Japan's Financial Crisis
- 145 Ryoichi Mikitani and Patricia Hagan Kuwayama**, Japan's New Central Banking Law: A Critical View
- 144 Koichi Hamada**, The Japanese Big Bang as a Unilateral Action
- 143 Ellie Okada**, Financial Control through Japan's Main Bank System and the Japanese Accounting System
- 142 Edward J. Lincoln**, Japan's Economic Mess
- 141 Hugh Patrick**, The Development of Studies of the Japanese Economy in the United States: A Personal Odyssey

1997

- 140 Shigeyuki Goto**, Study on the Interactive Approach between Insurance and Capital Markets for Catastrophe Risks
- 139 Patricia Hagan Kuwayama**, Postal Banking in the United States and Japan: A Comparative Analysis
- 138 Christina L. Ahmadjian**, Network Affiliation and Supplier Performance in the Japanese Automotive Industry
- 137 Christina L. Ahmadjian & James R. Lincoln**, Changing Firm Boundaries in Japanese Auto Parts Supply Networks
- 136 Fumio Hayashi**, The Main Banking System and Corporate Investment: An Empirical Reassessment
- 135 Yasushi Hamao & Takeo Hoshi**, Bank Underwriting of Corporate Bonds: Evidence from Japan after 1994
- 134 Klaus Wallner**, Implicit Contracts between Regulator and Firms: The Case of Japanese Casualty Insurance
- 133 Klaus Wallner**, Commodity Bundling in Japanese Non-Life Insurance: Savings-Type Products as Self-Selection Mechanism

- 132 **Patricia Hagan Kuwayama**, Credit Channels and the Small Firm Sector in Japan
- 131 **Terry A. Marsh & Jean-Michel Paul**, BIS Capital Regulations and Japanese Bank's Bad Loan Problems
- 130 **Yoshinobu Shiota**, Update on Japanese Bad Debt Restructuring
- 129 **Christina L. Ahmadjian**, Japanese Auto Parts Supply Networks and the Governance of Interfirm Exchange
- 128 **Takatoshi Ito, Richard K. Lyons & Michael T. Melvin**, Is There Private Information in the FX Market? The Tokyo Experiment

1996

- 127 **Yukiko Ohara**, Japan's Banking: The Darkest Hour Before Dawn. The Future is in the Hands of MoF
- 126 **Yasushi Hamao & Narasimhan Jegadeesh**, An Analysis of Bidding in the Japanese Government Bond Auctions
- 125 **Terry A. Marsh & Jean-Michel Paul**, Japanese Banks' Bad Loans: What Happened?
- 124 **Hirota Yamauchi & Takatoshi Ito**, Air Transport Policy in Japan
- 123 **Shinji Takagi**, The Japanese System of Foreign Exchange and Trade Control, 1950-1964
- 122 **David E. Weinstein**, Foreign Direct Investment and Keiretsu: Rethinking US and Japanese Policy
- 121 **Masatsugu Tsuji**, Deregulation and Privatization of the Fiscal Investment and Loan Program
- 120 **Koichi Hamada**, Consumers, the Legal System and Product Liability Reform: A Comparative Perspective between Japan and the United States
- 119 **David Flath**, Japanese Regulation of Truck Transport
- 118 **C.R. McKenzie**, The Commercial Paper Market in Japan
- 117 **Hideo Taki**, The Gas Industry in Japan
- 116 **Merit E. Janow**, Policy Approaches to Economic Deregulation and Regulatory Reform
- 115 **Arthur J. Alexander**, Domestic Aviation in Japan: Responding to Market Forces Amid Regulatory Constraints
- 114 **D. Eleanor Westney**, The Japanese Business System: Key Features and Prospects for Change
- 113 **Robert Dekle**, Endaka and Japanese Employment Adjustment
- 112 **G. Andrew Karolyi & René M. Stulz**, Why do Markets Move Together? An Investigation of U.S.-Japan Stock Return Comovements
- 111 **Jun-Koo Kang & René M. Stulz**, Why is There a Home Bias? An Analysis of Foreign Portfolio Equity Ownership in Japan
- 110 **Takeo Hoshi**, Bank Organization and Screening Performance
- 109 **John W. Cooney, Jr., Kiyoshi Kato & James S. Schallheim**, Public Placements of Seasoned Equity Issues in Japan
- 108 **Jun Cai, K.C. Chan & Takeshi Yamada**, The Performance of Japanese Mutual Funds
- 107 **Jun-Koo Kang & Takeshi Yamada**, The Japanese Market for Corporate Control and Managerial Incentives
- 106 **Ravi Jagannathan, Keiichi Kubota & Hitoshi Takehara**, The CAPM with Human Capital: Evidence from Japan
- 105 **Schon Beechler, Michelle Najjar Kristen Stucker & Allan Bird**, Japanese-style versus American-style Human Resource Management Overseas: Examining Whether the Data Support the "Facts"

- 104 **Schon Beechler, Scott Shane & Sully Taylor**, Ware Ware Nihonjin But We're Not All Alike: How Japanese Managers Champion Innovation
- 103 **Schon Beechler & Michelle Krazmien**, The Relationship Between Expatriates, Parent Company-Affiliate Integration and HRM Control in Overseas Affiliates of Japanese and American MNCs
- 102 **Schon Beechler, Michelle Najjar, B.C. Ghosh, Sukiswo Dirdjosuparto & Sieh Mei Ling**, Influences on Affiliate HRM Systems in Japanese MNCs in Southeast Asia
- 101 **Schon Beechler, John Stephan, Vladimir Pucik & Nigel Campbell**, Decision Making Localization and Decentralization in Japanese MNCs: Are There Costs of Leaving Local Managers Out of the Loop?

1995

- 100 **Yasushi Hamao**, Living with the "Enemy": An Analysis of Foreign Investment in the Japanese Equity Market
- 99 **Yasushi Hamao**, Japanese Government Bond Auctions: The U.S. Experience
- 98 **Hugh Patrick**, Crumbling or Transforming? Japan's Economic Success and its Postwar Economic Institutions
- 97 **Peter Drysdale**, The Question of Access to Japanese Market
- 96 **Hugh Patrick**, Northeast Asia: The Role of International and Regional Economic Institutions and Regimes
- 95 **Kazuo Sato**, Bubbles in Japan's Stock Market: A Macroeconomic Analysis
- 94 **William V. Rapp**, Software Policies and Hardware Competition: The Impact of Government, Industry and Users on the Development of Japan's Software Industry
- 93 **David Flath**, The Keiretsu Puzzle
- 92 **Seymour Spilerman, Hiroshi Ishida & Kuo-Hsien Su**, Educational Credentials and Promotion Prospects in a Japanese and an American Organization

1994-1991

- 91 **Seymour Silerman, Hiroshi Ishida**, Stratification and Attainment in a Large Japanese Firm
- 90 **Yasushi Hamao & Joel Hasbruck**, Securities Trading In the Absence of Dealers
- 89 **Fumio Hayashi**, Japan's Saving Rate: An Update
- 88 **Frank Packer**, The Disposal of Bad Loans in Japan: A Review of Recent Policy Initiatives
- 87 **Anthony Iaquinto**, Can Winners be Losers? The Case of the Deming Prize for Quality and Performance among Large Japanese Manufacturing Firms
- 86 **C. Tait Ratcliffe**, Medium-Term Prospects for the Japanese Economy and for U.S.-Japan Relations
- 85 **Mark Scher & Schon Beechler**, Japanese Banking in the U.S.-From Transient Advantage to Strategic Failure
- 84 **Schon Beechler, Scott Shane & Sully Taylor**, Organizational Variation in Championship Behavior: The Case of Japanese Firms
- 83 **Schon Beechler & Tony Iaquinto**, A Longitudinal Study of Staffing Patterns in U.S. Affiliates of Japanese Multinational Corporations
- 82 **Takatoshi Ito**, Short-run and Long-run Expectations of Dollar/Yen Exchange Rate
- 81 **Edward Lincoln**, Fundamental Issues in the United States-Japan Economic Relationship
- 80 **Fumio Hayashi**, Is the Japanese Extended Family Altruistically Linked?

- 79 **Schon Beechler & Sheri Ranis**, The Prospects for Industrial Cooperation Between the United States and Japan
- 78 **Marcus Noland**, US – Japan Trade Friction
- 77 **Frank Packer**, The Role of Long-Term Credit Banks Within the Main Bank System
- 76 **John Campbell & Yasushi Hamao**, Changing Patterns in Corporate Financing and the Main Bank System in Japan
- 75 **Hugh Patrick**, The Relevance of Japanese Finance and its Main Bank System
- 74 **Michael Smitka**, Contracting Without Contracts: How the Japanese Manage Organizational Transactions
- 73 **Takatoshi Ito & Keiko Nosse Hirono**, The Efficiency of the Tokyo Housing Market
- 72 **David Flath & Tatsuhiko Mariu**, Is Japan's Retail Sector Truly Distinctive?
- 71 **Linda Edwards**, The Status of Women in Japan: Has the Equal Opportunity Law Made a Difference?
- 70 **David Flath**, Keiretsu Shareholding Ties: Antitrust Issues
- 69 **Yasushi Hamao & Joel Hasbrouck**, Securities Trading in the Absence of Dealers: Trades and Quotes on the Tokyo Stock Exchange
- 68 **Schon Beechler & Allan Bird**, The Transfer of Human Resource Management Overseas: An Exploratory Study of Japanese and American Maquiladoras
- 67 **Charles Hall, Yasushi Hamao, & Trevor Harris**, A Comparison of Relations Between Security Market Prices, Returns and Accounting Measures in Japan and the US.
- 66 **Schon Beechler & Allan Bird**, The Best of Both Worlds? An Exploratory Study of Human Resource Management Practices in US Based Japanese Affiliates
- 65 **Michael Smitka**, The Decline of the Japanese Automobile Industry: Domestic and International Implications
- 64 **Hugh Patrick**, Comparisons, Contrasts, and Implications from the Financial Development of Japan, Korea and Taiwan
- 63 **Theodore C. Bestor**, Visible Hands: Auctions and Institutional Integration in the Tsukiji Wholesale Fish Market, Tokyo
- 62 **Frank Packer & Marc Ryser**, The Governance of Failure: An Anatomy of Corporate Bankruptcy in Japan
- 61 **William Rapp**, Japanese Multinationals: An Evolutionary Theory and Some Potential Global Political Implications for the 1990's
- 60 **David Flath & Tatsuhiko Nariu**, The Complexity of Wholesale Distribution Channels in Japan
- 59 **David Flath**, Indirect Shareholding Within Japan's Business Groups
- 58 **Tatsuo Hatta & Toru Ohkawara**, Commuting and Land Prices in the Tokyo Metropolitan Area.
- 57 **John Campbell & Yasushi Hamao**, Predictable Stock Returns in the United States and Japan: A Study of Long-Term Intergration
- 56 **Hugh Patrick**, Peace and Security on the Korean Peninsula: Reflections on the Economic Dimension
- 55 **Yasushi Hamao & Ronald Masulis**, The Effect of the 1987 Stock Crash on International Financial Integration
- 54 **Anthony L. Iaquinto**, Japanese Investment in the Border Region of the United States and Mexico
- 53 **John Campbell & Yasushi Hamao**, Monetary Policy and the Term Structure of Interest Rates in Japan
- 52 **Robert Dekle**, Alternative Estimates of Japanese Saving and Comparisons with the US
- 51 **Ellen R. Auster**, Penetration Without Dependence: A Network Analysis of Japanese Economic Activity in the U.S.
- 50 **Hugh Patrick**, Japan's Financial System and the Evolving Role of Main Banks
- 49 **Anthony L. Iaquinto & Schon L. Beechler**, The Performance Implications of Asset versus Transactional Advantages of MNEs
- 1990
- 48 **Ross Garnaut**, The Market and the State in Economic Development: Some Questions from East Asia and Australia
- 47 **Kazuo Sato**, Japan's Resource Imports
- 46 **Hugh Patrick**, Section 301 and the U.S. Japan Economic Relationship: Reflections on Kuroda
- 45 **Louis K.C. Chan, Yasushi Hamao & Josef Lakonishok**, Fundamentals and Stock Returns in Japan
- 44 **Peter Drysdale**, Change and Response in Japan's International Economic Policy
- 43 **David Flath**, Shareholding Interlocks in the Keiretsu, Japan's Financial Groups
- 42 **Edward J. Lincoln**, The Controversy Over Japan's Low Manufactured Imports
- 41 **Edward J. Lincoln**, Japan's Role in Asia Pacific Cooperation: Dimension, prospects, and Problems
- 40 **Ellen R. Auster**, Bringing a Network Perspective into Research on Technological Transfers and Other Interorganizational Relationships
- 1989
- 39 **Hong W. Tan & Atsushi Seike**, Pensions and Labor Turnover in Japan
- 38 **Maurice J. Wilkinson**, Inventory Behavior and Economic Instability in Japan
- 37 **Michael J. Smitka**, American Management: Reform or Revolution? The Transfer of Japanese Management Technology to the U.S.
- 36 **Koichi Hamada**, The Causes and Consequences of Japan's High Savings Ratio
- 35 **Ellen R. Auster**, The Relationship of Industry Evolution to Patterns of Technology Linkages, Joint Ventures, and Direct Investment Between the U.S. and Japan
- 34 **Masako N. Darrough & Trevor S. Harris**, Do Management Forecasts of Earnings Affect Stock Prices in Japan?
- 33 **Phillip A. Klein & Geoffrey H. Moore**, Analyzing Leading and Coincident Indicators for Pacific Basin Countries
- 32 **Geoffrey H. Moore & John P. Cullity**, Growth Cycle Signals as Inflation Indicators for Major Industrial Nations
- 31 **Takatoshi Ito**, Foreign Exchange Rate Expectations: Micro Survey Data
- 30 **Takatoshi Ito**, Is the Bank of Japan a Closet Monetarist?
- 29 **David Flath**, The Economic Rationality of the Japanese Distribution System
- 28 **Hugh Patrick**, Declining Industries, Mechanism of Structural Adjustment and Trade Policy in Pacific Basin Economics
- 27 **Susuma Fukuda**, The Fiscal Investment and Loan System

- 26 **Shoichi Saba**, The Japanese Cooperation and its Management
- 25 **Peter Drysdale & Ross Garnaut**, A Pacific Free Trade Area?
- 24 **James Moore Jr.**, The United States and Japan: Competition and Cooperation

1988

- 23 **Akio Mikuni**, Japan's Financial Power]
- 22 **Ariyoshi Okumura**, The Future Role of Tokyo's Financial Market
- 21 **Robert Dekle**, The Relationship Between Defense Spending and Economic Performance in Japan
- 20 **Hugh Patrick**, Explaining the Japanese Financial System: A Review of the Bank of Japan's Recent Volume
- 19 **Mototada Kikkawa**, Problems of the U.S. Trade Structure
- 18 **Hugh Patrick & Frances Rosenbluth**, Japan's Industrial Structure in Crisis: National Concerns and International Implications
- 17 **David Flath**, Why are There So Many Retail Stores in Japan?
- 16 **Richard Baldwin**, Some Empirical Evidence on Hysteresis in Aggregate U.S. Import Prices
- 15 **Frances Rosenbluth**, The Political Economy of Internationalizing the Japanese Financial System: The Case of the Bond Market
- 14 **Robert Dekle**, Do the Japanese Elderly Reduce Their Total Wealth?

1987

- 13 **Yoshio Higuchi**, A Comparative Study of Japanese Plants Operating in the U.S. and American Plants:

OCCASIONAL PAPERS

2004

- 56 **Shigeyuki Goto**, A Behavioral Risk Management System

2003

- 55 **Shigeyuki Goto & Hiroshi Hayakawa**, Building the corporate risk control system with some viewpoints on the risk psychology
- 54 **Ryozo Hayashi**, Economic Reform: View from METI
- 53 **Junji Narita**, The Economic Consequences of the 'Price Keeping Operation' in the Japanese Stock Markets
- 52 **Shigeyuki Goto**, Non-Life Insurance, E-Commerce, and the Importance of Proper Risk Communication
- 51 **Hugh Patrick**, Japan's Mediocre Economic Performance Persists and Fundamental Problems Remain Unresolved
- 50 **Takao Sase**, The Irresponsible Japanese Top Management Under the Cross-Shareholding Arrangement

2002

- 49 **Naotaka Kawakami**, The Impact of the Post Cold War Crises on the Political Economy of Japan
- 48 **Yasuhisa Shiozaki**, Can Japan's Ailing Banking System Be Cured?

Recruitment, Job Training, Wage Structure and Job Separation

- 12 **Jacob Mineer & Yoshio Higuchi**, Wage Structures and Labor Turnover in the U.S. and in Japan
- 11 **Fumio Hayashi & Takatoshi Ito**, Housing Finance Imperfections and Private Saving: A Comparative Simulation Analysis of the United States and Japan
- 10 **Hugh Patrick**, The Management of the United States-Japan Trade Relationship and its Implications for the Pacific Basin
- 9 **Michael Smitka**, Japanese Labor Market and Subcontracting
- 8 **Takatoshi Ito**, The Intra-Daily Exchange Rate Dynamics and Monetary Policies after the G5 Agreement
- 7 **Yoshio Higuchi**, Labor Force Withdrawal, Re-entry and Wages by Educational Attainment in Japanese Women
- 6 **Kazuo Sato**, Savings and Investment in Japan
- 5 **Koichi Hamada & Hugh Patrick**, Japan and the International Monetary Regime

1986

- 4 **Kazuo Sato**, Econometric Models of the Japanese Economy
- 3 **Hugh Patrick & Thomas Rohlen**, Japan's Small-Scale Family Enterprises
- 2 **Richard Baldwin & Paul Krugman**, Market Access and International Competition: A Simulation Study of 16K Random Access Memories
- 1 **Hugh Patrick**, Japanese High Technology Industrial Policy in Comparative Context

2001

- 47 **Shigeyuki Goto**, E-Commerce in the Japanese Non-Life Insurance Market
- 46 **Yasushi Ueno**, Effectiveness and Importance of Leadership in the Changing Period

2000

- 45 **Yotaro Kobayashi**, Japan's Changing Corporate Structure

1999

- 44 **Shunji Fukukawa**, Japan's Challenge for Economic Revitalization
- 43 **Patricia Hagan Kuwayama**, Lessons from Bad Experience with Banking Systems: The United States and Japan

1998

- 42 **Junichi Ujiie**, Investment Banking in Japan
- 41 **Toyoo Gyohten**, The Japanese Financial System: Restructuring for the Future
- 40 **William E. Franklin**, Careers in International/Asia Pacific Business: Perspectives of an Experienced Japan Hand
- 39 **Jay W. Chai**, Wounded Asia vs. the IMF: Where do we go from here?
- 38 **Lawrence H. Summers**, The US-Japanese Stake in a Free and Open Asian Capital Market
- 37 **Yuichiro Nagatomi**, The Challenges Before Industrialized Countries

36 **Henry Kaufman**, The Yen, The Dollar and The Euro

35 **Yuji Suzuki**, Strategy Towards the “Big Bang” The Industrial Bank of Japan’s Approach

34 **Maryann Keller**, International Automobile Production: How Will Firms Compete in the 21st Century?

1997

33 **Hugh Patrick**, How the Japanese Financial System and Its Main Bank System Have Dealt with Generic Issues of Financial Banking

32 **Patricia Hagan Kuwayama**, Comments on Japanese Economic Policy

31 **Roger M. Kubarych**, The Yen and the Dollar: Irrational Exuberance?

30 **Robert Pitofsky**, Competition Policy in Communications Industries: New Antitrust Approaches

29 **Masaya Miyoshi**, Japan’s Capitalism in Systemic Transformation

28 **Yasuo Kanzaki**, Japan’s “Super” Big Bang: Hashimoto’s Make-or-Break Gamble

1996

27 **Sheldon Weinig**, Can an American Entrepreneur Work for a Japanese Company and Be Effective and Happy?

26 **Takeshi Nagano**, The History and Future of Japanese Management

25 **Isao Matsuura**, Japanese Banks in Transition: Problems and Prospects

24 **Max C. Chapman, Jr.**, A Viable Strategy for Japanese Securities Firms in the United States

1995-1991

23 **Yotaro Kobayashi**, The Japanese Corporation in Transition: Current Challenges and Outlook

22 **Hideo Ishihara**, Re-evaluating the Japanese Corporate System

21 **Yoshitaka Fujitani**, Challenges Facing Japanese Steel in Today’s Global Economy

20 **Kenichi Ohmae**, Japanese Corporate Strategy in Crisis

19 **Shijuro Ogata**, The Japanese Economy and the Aftermath of Its Unusual Recession

18 **Jeffrey Garten**, U.S.-Japan Relations:

Accomplishments, Next Steps, Future Considerations

16 **Susumu Yoshida**, Agenda for Japanese Business in the Global Economy

15 **Saburo Okita**, Japan’s Role in a Changing World Economy

14 **Takeo Siina**, Selling IBM in Japan, Selling Japan in IBM

13 **Hugh Patrick**, Some Thoughts on Japan’s Financial Mess

12 **Yoshitoki Chino**, A Monologue on Japan’s Financial Market

11 **Jeffrey Garten**, Thinking About World Order: America, Japan and Germany in the 1990’s

10 **Nobuo Ohashi**, Innovation and Technical Development in the Japanese Steel Industry

9 **Yuzaburo Mogi**, Problems and Solutions to Japanese Investment Abroad

8 **Hugh Patrick**, One World, Two Worlds or Three? Reflections on the New International Economic Order

7 **Kensuke Hotta**, Deregulation of the Japanese Financial Markets and the Role of Japanese Banks

6 **Hironobu Shibuya**, Taking Responsibility: Japanese Companies and Corporate Citizenship

5 **Sam Kusumoto**, Going Global Without Going Broke

1990-1989

4 **Yuchichiro Nagatomi**, The Financial System and Global Socioeconomic Change

3 **Yoshio Terasawa**, The M.I.G.A. and its Mission

2 **Eiji Umene**, The United States-Japan Relationship in the Rapidly Changing World Environment

1 **Nobutoshi Akao & Joseph A. Massey**, Agenda for a Pacific Partnership: A Japanese-American Dialogue

CENTER ON JAPANESE ECONOMY AND BUSINESS
 Working and Occasional Papers
Order Form

All of our Working & Occasional Papers are now available for you to download for free from <http://digitalcommons.libraries.columbia.edu/japan/>.

To order hard copies of working paper(s) and/or occasional paper(s), please fill out this form and return it to the address below **with** a check made payable to the **Columbia University**. Papers are \$5 each.

Center on Japanese Economy and Business
 Attn.: Jeff Lagomarsino
 Columbia Business School
 321 Uris Hall
 3022 Broadway
 New York, NY 10027

Title of paper(s) ordered:	(Paper #)	No. of copies
.....	(#) x	
.....	(#) x	
Total Cost:	\$5 x	_____ = \$

Please provide the address to which the paper(s) should be mailed (please print):

Name:

Affiliation:

Address:

.....

.....

Tel:

Fax: