



**Thank you for downloading this document from the RMIT Research Repository.**

The RMIT Research Repository is an open access database showcasing the research outputs of RMIT University researchers.

RMIT Research Repository: <http://researchbank.rmit.edu.au/>

**Citation:**

**See this record in the RMIT Research Repository at:**

**Version:**

**Copyright Statement:**

©

**Link to Published Version:**

**PLEASE DO NOT REMOVE THIS PAGE**

RESEARCH ARTICLE

# Expectancy after the first treatment and response to acupuncture for menopausal hot flashes

Carolyn C. Ee<sup>1,2\*</sup>, Sharmala Thuraisingam<sup>2</sup>, Marie V. Pirotta<sup>2</sup>, Simon D. French<sup>3,4</sup>, Charlie C. Xue<sup>5</sup>, Helena J. Teede<sup>6</sup>

**1** National Institute of Complementary Medicine, Western Sydney University, Sydney, New South Wales, Australia, **2** Department of General Practice, University of Melbourne, Melbourne, Victoria, Australia, **3** School of Rehabilitation Therapy, Queens University, Kingston, Ontario, Canada, **4** Department of Chiropractic, Faculty of Science and Engineering, Macquarie University, New South Wales, Australia, **5** School of Health and Biomedical Sciences, RMIT University, Melbourne, Victoria, Australia, **6** Monash Centre for Health Research and Implementation: a partnership between Monash Health and the School of Public Health, Monash University, Melbourne, Victoria, Australia

\* [c.ee@westernsydney.edu.au](mailto:c.ee@westernsydney.edu.au)



**OPEN ACCESS**

**Citation:** Ee CC, Thuraisingam S, Pirotta MV, French SD, Xue CC, Teede HJ (2017) Expectancy after the first treatment and response to acupuncture for menopausal hot flashes. PLoS ONE 12(10): e0186966. <https://doi.org/10.1371/journal.pone.0186966>

**Editor:** Stephen L. Atkin, Weill Cornell Medical College Qatar, QATAR

**Received:** January 24, 2017

**Accepted:** October 11, 2017

**Published:** October 27, 2017

**Copyright:** © 2017 Ee et al. This is an open access article distributed under the terms of the [Creative Commons Attribution License](https://creativecommons.org/licenses/by/4.0/), which permits unrestricted use, distribution, and reproduction in any medium, provided the original author and source are credited.

**Data Availability Statement:** Data are included in Supporting Information files.

**Funding:** CE was supported by an NHMRC Postgraduate Scholarship, HT by an NHMRC Practitioner Fellowship, MP by an NHMRC Career Development Fellowship. The main study was funded by a Project Grant 1004006 from the National Health and Medical Research Council, Australia ([www.nhmrc.gov.au](http://www.nhmrc.gov.au)). SDF is supported by a Canadian Chiropractic Research Foundation Professorship. The funders had no role in study

## Abstract

### Background

Evidence on the impact of expectancy on acupuncture treatment response is conflicting.

### Objectives

This secondary analysis of a randomized sham-controlled trial on acupuncture for menopausal hot flashes investigated whether treatment expectancy score was associated with hot flash score at end-of-treatment. Secondary analyses investigated whether there were associations between other pre-specified factors and hot flash score.

### Study design

Women experiencing moderately-severe hot flashes were randomized to receive 10 sessions of real or sham acupuncture over eight weeks. Hot flash score was collected using a seven-day hot flash diary, and expectancy using the modified Credibility and Expectancy Questionnaire immediately after the first treatment. Linear mixed-effects models with random intercepts were used to identify associations between expectancy score and hot flash score at end-of-treatment. Regression was also used to identify associations between pre-specified factors of interest and hot flash score. Because there was no difference between real and sham acupuncture for the primary outcome of hot flash score, both arms were combined in the analysis.

### Results

285 women returned the Credibility and Expectancy Questionnaire, and 283 women completed both expectancy measures. We found no evidence for an association between expectancy and hot flash score at end-of-treatment for individual cases in either acupuncture

design, data collection and analysis, decision to publish, or preparation of the manuscript.

**Competing interests:** CE declares that she is a practising acupuncturist. The other authors declare that no competing interests exist. This does not alter our adherence to PLOS ONE policies on sharing data and materials.

or sham group. Hot flash scores at end-of-treatment were 8.1 (95%CI, 3.0 to 13.2;  $P = 0.002$ ) points lower in regular smokers compared to those who had never smoked, equivalent to four fewer moderate hot flashes a day.

## Conclusion

In our study of acupuncture for menopausal hot flashes, higher expectancy after the first treatment did not predict better treatment outcomes. Future research may focus on other determinants of outcomes in acupuncture such as therapist attention. The relationship between smoking and hot flashes is poorly understood and needs further exploration.

## Introduction

Acupuncture is a Chinese medical intervention that involves the insertion of fine metal needles into specified areas of the body. Several large meta-analyses of acupuncture for painful conditions have demonstrated that acupuncture produces small specific effects and considerable non-specific effects [1–3]. Critics of acupuncture assert that its clinical response is by and large due to high expectations of the patients[4]. However, the empirical evidence for or against the influence of expectancy on acupuncture treatment outcome is contradictory.

Expectancy, or its synonym expectations, refers to an individual's beliefs about future events[5]. Treatment expectancy can have a positive or negative impact on treatment outcome and is a major contributor to the placebo response[6]. Expectations may vary according to individual understanding about the illness, treatment, and experiences with past treatments, and may change over the course of treatment [5].

Two systematic reviews of acupuncture trials that measured the impact of participants' expectations on outcomes have reported mixed findings. Colagiuri and Smith reviewed findings from nine acupuncture trials[7], of which the majority examined acupuncture for painful conditions and used mainly self-reported outcomes. Four trials failed to find any effects of expectancy on outcomes, while five found at least some evidence that higher expectancy predicted better outcomes. Prady et al reviewed 58 trials, similarly most on painful conditions, and again found conflicting evidence[8]. In more recent research, Vase and colleagues demonstrated that perceived treatment allocation (to real or sham acupuncture) resulted in significantly lower dental pain levels[9], and Bauml and colleagues reported that higher expectancy predicted higher treatment response for sham but not for real electro-acupuncture in a trial of acupuncture for joint pain in breast cancer patients[10]. There is limited evidence on the impact of expectancy on acupuncture treatment outcomes for conditions other than pain.

Hot flashes (HFs) cause significant morbidity in menopausal women[11, 12] and last an average of five years[13]. Because of perceived shortcomings of conventional medical treatment, complementary therapies for hot flashes have increased in popularity[14] and are used by up to 80% of women during the menopause[15]. Acupuncture is a popular treatment amongst menopausal women[16] however there is insufficient evidence of its efficacy as a treatment for hot flashes[17]. We conducted a randomized sham-controlled trial testing the efficacy of acupuncture for hot flashes[18]. As both real and sham acupuncture groups improved equally in our study, we now aim to examine the impact of treatment expectancy on the acupuncture response. The primary aim of this post hoc analysis was to investigate whether treatment expectancy score (measured at the end of the first acupuncture treatment) was

associated with HF score at end-of-treatment. The secondary aims were to determine other factors associated with hot flash score at end-of-treatment.

## Materials and methods

This is an *a priori* planned secondary analysis of data from a randomized controlled trial (RCT) that investigated the effects of acupuncture compared to sham on menopausal hot flashes. The protocol[19] and key findings[18] from the RCT have been published. Ethics approval was obtained from the Human Research Ethics Committee, University of Melbourne and the trial was prospectively registered on the Australian and New Zealand Clinical Trial Registry <http://www.anzctr.org.au> (ACTRN12611000393954).

## Participants

We recruited 327 women having at least seven moderately-severe HFs a day from the community, in metropolitan and regional areas of Australia. Participants were aged over 40 years old and were postmenopausal or in the late menopausal transition. Exclusion criteria included current use of menopausal hormone therapy, other HF treatments within the preceding 12 weeks, bilateral salpingo-oophorectomy, breast cancer, and needle acupuncture within the last two years.

## Intervention and control

Women were randomized to receive real acupuncture (based on Chinese Medicine principles) or non-invasive sham acupuncture. Ten treatments were given over eight weeks, twice weekly for the first fortnight and weekly thereafter. Participants were blinded to treatment allocation, but acupuncturists were not.

## Outcomes

The trial primary outcome was change in HF score at end-of-treatment. HF frequency, severity and a composite HF score were calculated from validated seven-day HF diaries[20] collected at baseline, four weeks, end-of-treatment (eight weeks), and three- and six-month after end of treatment. At baseline, we collected information on known risk factors for HFs. From these, we selected variables that we hypothesised were most likely to influence hot flash score at end-of-treatment. We did not include variables with a significant proportion of missing data (such as income) or little variation between categories (such as ethnicity). The chosen variables are summarised in [Table 1](#).

**Table 1. Information about potential confounders, collected at baseline.**

Potential confounder	Categories
Current smoking status [21]	Never smoked, used to smoke, now smoke occasionally, or now smoke regularly
Education level [22–24]	Highest level of education attained (primary school, high school, college/vocational training/university degree, or postgraduate);
Duration of hot flashes in years	
Anxiety score [25]	Anxiety subscore from Hospital Anxiety and Depression Scale
Perceived treatment allocation	Real/placebo/not sure
Practitioner gender [26]	Male/female practitioner
Credibility score [27]	9 point Likert scale: 1 = “not at all useful”; 9 = “very useful”

<https://doi.org/10.1371/journal.pone.0186966.t001>

## Expectancy

We used a modified version of the Credibility and Expectancy Questionnaire (CEQ) to measure expectancy. The CEQ is a validated, widely-used, quick and easy-to-administer 6-item scale for measuring treatment expectancy and rationale credibility in clinical outcome studies[27]. We administered this questionnaire immediately after the first treatment in order to capture expectancy levels following the experience of a treatment but before expectations are influenced by clinical improvement. Treating acupuncturists gave the participant a questionnaire to complete at the end of the first treatment and then returned the questionnaires to us by reply-paid mail.

The CEQ consists of two sections: the first asks participants what they think will happen at the end of treatment, and the second asks what they feel will happen. This distinguishes between cognitive and affective aspects of belief, which can be distinct; one can hold rational thoughts which conflict with a sense of hope or faith[27]. The first section contains four questions, three on credibility (logicalness of the treatment, success in reducing symptoms, confidence in recommending to a friend) and one expectancy question (improvement in symptoms by the end of treatment). The second section asks one credibility question (success of treatment) and one expectancy question (improvement in symptoms) but distinguishes these as how the patient feels about improvement rather than thinks. The original CEQ used a Likert scale from 1–9, 1 representing “not at all” and 9 representing “very much” or “very useful” for the credibility questions, and a scale from 0–100% in 10% increments for the expectancy questions. The midpoint was described as “somewhat useful”. To simplify the questionnaire we applied the same 9-point Likert scale to the expectancy questions. A composite score was derived for the four credibility questions, and for this analysis we calculated mean scores for each of the two expectancy questions.

As surveys to measure the success of blinding may enhance participants focus on this, we measured this aspect immediately after the first treatment[28], by inserting a question at the end of the CEQ which asked women to indicate which treatment they believed they had received, with answer options of “real acupuncture”, “sham acupuncture” and “not sure”.

As all outcomes were self-assessed, outcome assessment was considered blinded as well.

## Analysis

Analysis was restricted to the 285 women who provided CEQ data. The two expectancy items (“Expectancy 1 and 2”) were included in the analysis and the wording of these questions is presented in Table 2.

Stata version 13.1 (StataCorp) was used for all analyses. Since the previous study did not find a difference in outcome between the treatment groups, study arm was not included as a confounder in this analysis. Instead, data for both arms were combined and analysed as one. Bivariate analyses were performed to identify associations between independent variables and hot flash score at end of treatment with adjustment for baseline hot flash score. The independent variables tested were expectancy, HF duration (years), baseline anxiety, practitioner gender, perceived treatment allocation, smoking status, credibility and education. The final model

**Table 2. Wording of expectancy questions in the Credibility Expectancy Questionnaire.**

Question	Range
“Expectancy 1”: By the end of the treatment period, how much improvement in your hot flashes do you think will occur?	1 = None at all 9 = Total improvement
“Expectancy 2”: By the end of the treatment period, how much improvement in your hot flashes do you really feel will occur?	1 = Not at all 9 = Very much

<https://doi.org/10.1371/journal.pone.0186966.t002>

consisted of all variables found to be statistically significant in the bivariate analyses and the multivariable analyses at the 0.05 alpha significance level. Both a log and square root transformation of the outcome variable were considered to minimise heteroscedasticity.

All models in the analyses were linear mixed-effects models with random intercepts. Restricted maximum likelihood estimation (REML) was used to estimate the effect of expectancy score and the other independent variables on hot flash score. These estimates, with 95% confidence intervals and p-values, were reported. Missing data was assumed to be missing at random in these analyses.

The goodness of fit of the models was assessed using residual plots (results not shown) and the impact of potential outliers on regression results explored. No imputation methods were carried out, however, a pattern-mixture model was used to evaluate the impact of the assumption of missing at random (see [S1 Fig](#)).

## Results

285 women returned the CEQ, and 283 completed both expectancy questions. [Table 3](#) describes the demographic details of the participants. Participants were mainly Caucasian, well educated and had good to excellent self-rated health levels. The mean age was 55 years. No serious adverse events were reported. [Fig 1](#) depicts the flow of participants in the study through to end of treatment (eight weeks).

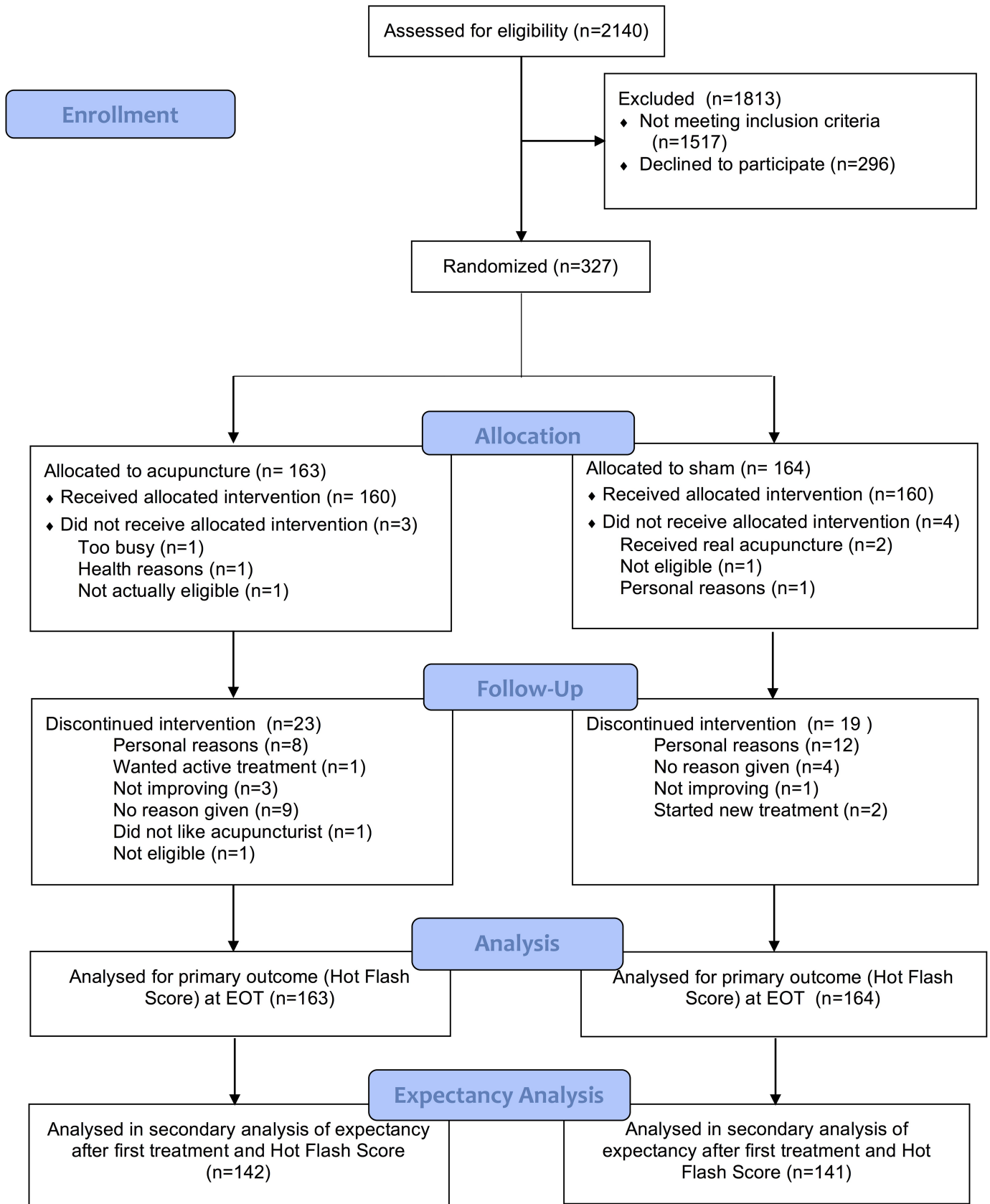
We found no evidence of an association between expectancy after the first treatment and HF score at the end of the treatment period. On average, HF scores at end of treatment were 8.1 (95%CI, 3.0 to 13.2;  $P = 0.002$ ) points lower in regular smokers compared to those who had never smoked. There was a lack of evidence to suggest an association between the other independent variables and HF score at end of treatment. [Table 4](#) summarises the findings from the bivariate analyses of the independent variables and HF score.

There were a few participants with large HF scores. These were found to have little influence on the regression model. A log or square root transformation of the outcome variable did not seem to significantly reduce heteroscedasticity or change study conclusions.

**Table 3. Participant baseline demographic characteristics.**

N = 285		Missing
Characteristic	n (%)	n (%)
Age (years)	54.9 (4.1)*	37 (13.0)
Ethnicity		39 (13.7)
Caucasian	237 (96.3)	
Non-Caucasian	9 (3.7)	
Highest educational attainment		38 (13.3)
Primary or high school	93 (37.7)	
Vocational training, diploma, university degree or higher	154 (62.4)	
Average weekly household income		89 (31.2)
Low income (\$0–599)	76 (38.8)	
Middle income (\$600–2000)	111 (56.6)	
High income (≥\$2000)	9 (4.6)	
Self-rated health		39 (13.7)
Excellent	47 (19.1)	
Very good	111 (45.1)	
Good	73 (29.7)	
Fair	11 (4.5)	
Poor	4 (1.6)	

<https://doi.org/10.1371/journal.pone.0186966.t003>





**Fig 1. Flowchart of trial procedures.**

<https://doi.org/10.1371/journal.pone.0186966.g001>

The sensitivity analysis for missing data (S1 Fig) showed that mean hot flash scores would be no different between regular and never smokers if regular smokers with missing data had a mean hot flash score 10 points greater than the observed regular smokers. This difference is larger than the standard deviation of hot flash scores for regular smokers and seems implausible.

## Discussion

In this post hoc analysis of a randomized sham-controlled trial of acupuncture for menopausal hot flashes, we did not find evidence that higher expectations, perceived treatment allocation or credibility score after the first treatment predicted a better treatment response to acupuncture. Each one-point increase in expectancy score resulted in an estimated reduction of one third of a mild hot flash per day, which is not clinically significant.

In previous trials of acupuncture for hot flashes, there is limited and inconclusive evidence on the impact of expectancy on outcomes. In one large pragmatic trial comparing acupuncture with usual care, positive expectations were not associated with treatment outcome[29]. In

**Table 4. Bivariate associations between independent variables and hot flash score at EOT adjusted by baseline hot flash score (N = 285).**

Independent Variables	n*	Missing n (%)	Mean change in hot flash score at EOT*	P-value
Expectancy question 1 (1–9)	6.8 (1.6)**	1 (0.4)	-0.3 (-1.1 to 0.4)	0.42
Expectancy question 2 (1–9)	6.9 (1.7)**	2 (0.7)	-0.3 (-1.0 to 0.4)	0.35
Credibility score (composite) (1–9)	6.8 (1.5)**	-	0.02 (-0.8 to 0.8)	0.97
Hot flash duration (years)	5.1 (4.6)**	40 (14.0)	0.1 (-0.16 to 0.38)	0.42
Anxiety score	7.6 (4.2)**	35 (12.3)	-0.2 (-0.5 to 0.1)	0.30
Practitioner gender		9 (3.2)		0.96
Female practitioners	98		-	
Male practitioners compared to female practitioners	178		0.03 (-1.3 to 1.4)	
Perceived study arm allocation		5 (1.8)		0.89
“Sham acupuncture”	13		-	
“Real acupuncture” compared to “sham acupuncture”	91		-1.3 (-6.7 to 4.1)	
“Not sure” compared to “sham acupuncture”	176		-1.0 (-6.3 to 4.3)	
Smoking status		37 (13.0)		0.02
Never smoker	116		-	
Regular smoker compared to never smoker	21		-8.1 (-13.2 to -3.0)	
Occasional smoker compared to never smoker	8		-0.9 (-7.7 to 5.8)	
Previously smoked compared to never smoked	103		-0.7 (-3.3 to 2.0)	
Education		38 (13.3)		0.61
Completed primary school or high school	93		-	
Completed a degree compared with primary school/high school	109		-1.4 (-4.3 to 1.4)	
Completed postgraduate education compared with primary school/high school	45		-1.00 (-4.6 to 2.6)	

\*number of participants with a HF score and response for the independent variable listed. There were 37 (13%) participants with missing HF score at end of treatment.

\*\*Mean (SD)

EOT = end of treatment

<https://doi.org/10.1371/journal.pone.0186966.t004>



contrast, high expectancy predicted a greater response to treatment in the acupuncture group in another open-labelled trial[30]. Meanwhile, participants in the real acupuncture group in a sham-controlled pilot study had higher expectations than in the sham group but it is unclear if this resulted in better outcomes[31]. Taken together, there is little evidence for an association between expectancy and improvement in HFs in acupuncture trials, particularly in Western countries.

The only variable that predicted treatment outcome in our study was smoking status. Being a current smoker was associated with a clinically significant difference equivalent to four fewer moderate hot flashes a day, when comparing never smokers with regular smokers, and is consistent with a recent finding of the association between smoking status and a higher placebo response in a trial of a pharmaceutical for hot flashes[21]. However, this was not mediated by expectancy levels in our study. The reasons for this association are unclear. Smoking is a risk factor for experiencing HFs[24, 32] and smokers tend to over-report the frequency of their hot flashes[33], rate their hot flashes as more problematic[34] and report higher levels of bother from their hot flashes than non-smokers with a similar HF burden[35]. This finding should be interpreted with caution as the proportion of smokers in our study was small. We also did not collect data on smoking cessation during the trial, and do not know if these women's symptoms improved because they stopped smoking.

Henry Beecher reported that about 30% of patients responded positively to a placebo treatment. However, in doing so, he failed to distinguish the placebo response from other confounding factors, therefore over-inflating the perceived power of the placebo[6]. This error has persisted, and today the placebo response is frequently confused with the overall improvement that occurs in a placebo control group, which is a composite of the psychobiological placebo response and other reasons for clinical improvement such as regression to the mean.

The placebo response is a distinct psychobiological response seen when a placebo is administered, mediated by opioidergic and dopaminergic pathways and modified by psychosocial context[36]. This response can be reversed by the opioid antagonist naloxone and can also have non-opioidergic effects[6]. It is not equivalent to the overall response seen in control groups, and should be carefully distinguished from other factors that can induce a clinical response. Expectancy and classical conditioning are the principal mechanisms of the placebo response, however in this study we failed to find an association between expectancy and treatment outcome. This suggests that the improvement in HFs is mediated by factors other than the physiological placebo response.

Non-placebo improvements can be seen in active, control and placebo groups. Here, improvements in both groups may have been due to response bias. Research participants can become attached to the research team and committed to success of the trial, which may predispose them to report improvements in symptoms[37]. Alternatively, participants may have felt compelled to rate their expectations higher than they actually were.

Another likely explanation for clinical improvement in our study may be the frequent therapist interaction that is inseparable from the act of receiving acupuncture needling. Although earlier studies suggested that empathic consultation styles predicted treatment outcomes in acupuncture consultations[38, 39], more recent studies have not replicated this finding[26]. However, qualitative research by Paterson and colleagues indicate that patients attending for acupuncture consultations value the "talking, listening and practitioners' attention to them as an individual"[40] and practitioner characteristics of being "considerate, respectful, caring, kind, understanding, professional, helpful, reassuring and supportive". Also, patients in Paterson's study valued the interactions with clinic staff and the friendly atmosphere of acupuncture clinics. In particular, practitioner empathy has been linked to patient enablement[38], which suggests that participants in our study may have developed new ways to cope with their

symptoms and new self-care strategies, as a result of interacting with an empathic practitioner. This is supported by findings from antidepressant trials reporting markedly improved outcomes when participants had a greater number of treatment visits[41] and findings from a Cochrane review on placebo interventions which found larger clinical improvements with physical placebos compared with placebo pills, particularly with those that required the placebo to be administered by a therapist[42, 43]. In a mixed-methods study on acupuncture for dysmenorrhoea, participants described a feeling of partnership with their practitioners, validation of their symptoms, and a sense of hope arising from the acupuncture consultations, which contributed to their overall improvement[44]. Future research may need to study non-needling effects of acupuncture including assessment of the quality of the therapeutic relationship, and level of practitioner empathy.

Another likely reason for clinical improvement is the physiological effect of sham needling. Sham acupuncture blinds participants and controls for both expectations from receiving acupuncture and for other effects not associated with needling, including seeing a therapist. This minimises performance and detection bias, particularly if outcomes are self-reported[43]. However, light stimulation of the skin can activate descending pain modulation pathways, particularly with repeated stimulation[45]. Sham acupuncture is widely recognised as a “non-inert” comparator, and has been criticised as an inadequate control method for acupuncture [46, 47]. The effectiveness of “placebo devices” for acupuncture has been comprehensively reviewed recently[48] and although the Park Sham Device used in our study appears to be superior to other non-invasive devices, none of the currently available sham control methods are considered inert and certainly none are equivalent to placebo.

Strengths of the main acupuncture study include a broad recruitment strategy, successful blinding of participants, high retention rate, and approximately equal proportions of participants with previous acupuncture experience and no previous acupuncture experience. Additionally, although this was a secondary analysis, it was considered *a priori*[19] therefore adding to the rigour of our analysis.

Some limitations must be considered when interpreting our findings. First, our primary aim was to assess the efficacy of acupuncture for hot flashes, and not to evaluate the impact of expectancy on treatment outcome. Second, we only measured expectations immediately after the first treatment and it is possible that expectations change over time especially in response to a perceived improvement in symptoms. Third, 13% of women did not return surveys on expectancy, therefore the impact of expectations in these women is unknown; as well as this, we had a number of missing responses to the other variables. Also, although we used a validated and widely-used expectancy scale, treatment expectancy is difficult to measure. For participants to respond accurately they must interpret the question correctly, be aware of their own expectations and understand the rating scale of the question. Also, we modified the CEQ by using the 9-point Likert scale instead of a scale from 0–100% for the expectancy questions, although we think the impact on our findings would be minimal. Fourth, we did not include a no-treatment control group, and do not have data on the true inert placebo effect in our study, that is, given sham acupuncture appears not to be equal to placebo.

Finally, expectancy is but one of the psychological mechanisms contributing to the placebo response, albeit a key mechanism. Other mechanisms contributing to the placebo response include classical conditioning, learning, memory, motivation, somatic focus, anxiety reduction and meaning[6] and it is possible that some of these may have played a role in treatment outcome. In a qualitative study of participants of a sham-controlled trial of acupuncture for irritable bowel syndrome, Kaptchuk and colleagues found that the experiences of participants were complex and idiosyncratic, concluding that the placebo response in a randomized placebo-controlled trial context is not a simple and linear construct[49].

## Conclusions

Findings from this post hoc analysis of our large randomized clinical trial of acupuncture for menopausal hot flashes demonstrate that there was no evidence for an association between expectancy measured immediately after the first treatment, and treatment outcome. Our findings refute the assertion that the effects of acupuncture are driven by patient expectations. Rather, the non-specific effects of acupuncture may relate more to other factors that can influence response to comparators or placebos in clinical research including therapist attention and increased sense of enablement.

The role of sham controls in acupuncture trials should be revisited and suitable comparators for acupuncture should be considered in future research, such as comparing acupuncture to equivalent attention interventions. We also found that being a regular smoker was associated with a large clinical improvement; the reasons for this are unclear but should be explored further.

## Supporting information

**S1 Fig. Sensitivity analysis.**  
(TIFF)

**S1 File. Dataset.**  
(XLS)

## Acknowledgments

CE was supported by an NHMRC Postgraduate Scholarship, HT by an NHMRC Practitioner Fellowship, MP by an NHMRC Career Development Fellowship. SDF is supported by a Canadian Chiropractic Research Foundation Professorship.

## Author Contributions

**Conceptualization:** Carolyn C. Ee, Marie V. Pirotta, Simon D. French, Charlie C. Xue, Helena J. Teede.

**Data curation:** Carolyn C. Ee.

**Formal analysis:** Sharmala Thuraisingam.

**Funding acquisition:** Carolyn C. Ee, Marie V. Pirotta, Simon D. French, Charlie C. Xue, Helena J. Teede.

**Investigation:** Carolyn C. Ee, Sharmala Thuraisingam, Marie V. Pirotta, Simon D. French, Charlie C. Xue, Helena J. Teede.

**Methodology:** Carolyn C. Ee, Sharmala Thuraisingam, Marie V. Pirotta, Simon D. French, Charlie C. Xue, Helena J. Teede.

**Project administration:** Carolyn C. Ee.

**Supervision:** Marie V. Pirotta, Simon D. French, Charlie C. Xue, Helena J. Teede.

**Writing – original draft:** Carolyn C. Ee, Sharmala Thuraisingam.

**Writing – review & editing:** Carolyn C. Ee, Sharmala Thuraisingam, Marie V. Pirotta, Simon D. French, Charlie C. Xue, Helena J. Teede.

## References

- Madsen MV, Gotzsche PC, Hrobjartsson A. Acupuncture treatment for pain: systematic review of randomised clinical trials with acupuncture, placebo acupuncture, and no acupuncture groups. *BMJ*. 2009; 338:a3115. MEDLINE:19174438. <https://doi.org/10.1136/bmj.a3115> PMID: 19174438
- Linde K, Niemann K, Schneider A, Meissner K. How large are the nonspecific effects of acupuncture? A meta-analysis of randomized controlled trials. *Bmc Medicine*. 2010; 8. <https://doi.org/10.1186/1741-7015-8-75> PMID: 21092261
- MacPherson H, Vertosick E, Lewith G, Linde K, Sherman KJ, Witt CM, et al. Influence of control group on effect size in trials of acupuncture for chronic pain: a secondary analysis of an individual patient data meta-analysis. *PLoS One*. 2014; 9(4):e93739. Epub 2014/04/08. <https://doi.org/10.1371/journal.pone.0093739> PMID: 24705624; PubMed Central PMCID: PMC3976298.
- Colquhoun D, Novella SP. Acupuncture is theatrical placebo. *Anesth Analg*. 2013; 116(6):1360–3. Epub 2013/05/28. <https://doi.org/10.1213/ANE.0b013e31828f2d5e> PMID: 23709076.
- Rutherford BR, Wager TD, Roose SP. Expectancy and the Treatment of Depression: A Review of Experimental Methodology and Effects on Patient Outcome. *Current psychiatry reviews*. 2010; 6(1):1–10. Epub 2010/02/01. <https://doi.org/10.2174/157340010790596571> PMID: 24812548; PubMed Central PMCID: PMC3976298.
- Finniss DG, Kaptchuk TJ, Miller F, Benedetti F. Biological, clinical, and ethical advances of placebo effects. *Lancet*. 2010; 375(9715):686–95. MEDLINE:20171404. [https://doi.org/10.1016/S0140-6736\(09\)61706-2](https://doi.org/10.1016/S0140-6736(09)61706-2) PMID: 20171404
- Colagiuri B, Smith CA. A systematic review of the effect of expectancy on treatment responses to acupuncture. *Evid Based Complement Alternat Med*. 2012; 2012:857804. Epub 2011/12/29. <https://doi.org/10.1155/2012/857804> PMID: 22203882; PubMed Central PMCID: PMC3235945.
- Prady SL, Burch J, Vanderbloemen L, Crouch S, MacPherson H. Measuring expectations of benefit from treatment in acupuncture trials: A systematic review. *Complementary Therapies in Medicine*. 2015; 23(2):185–99. <http://dx.doi.org/10.1016/j.ctim.2015.01.007> PMID: 25847556
- Vase L, Baram S, Takakura N, Yajima H, Takayama M, Kaptchuk TJ, et al. Specifying the nonspecific components of acupuncture analgesia. *Pain*. 2013; 154(9):1659–67. Epub 2013/05/28. <https://doi.org/10.1016/j.pain.2013.05.008> PMID: 23707680; PubMed Central PMCID: PMC3981538.
- Bauml J, Xie SX, Farrar JT, Bowman MA, Li SQ, Bruner D, et al. Expectancy in real and sham electroacupuncture: does believing make it so? *J Natl Cancer Inst Monogr*. 2014; 2014(50):302–7. Epub 2015/03/10. <https://doi.org/10.1093/jncimonographs/igu029> PMID: 25749596; PubMed Central PMCID: PMC3981538.
- Avis NE, Colvin A, Bromberger JT, Hess R, Matthews KA, Ory M, et al. Change in health-related quality of life over the menopausal transition in a multiethnic cohort of middle-aged women: Study of Women's Health Across the Nation. *Menopause*. 2009; 16(5):860–9. Epub 2009/05/14. <https://doi.org/10.1097/gme.0b013e3181a3cdaf> PMID: 19436224; PubMed Central PMCID: PMC3981538.
- Kumari M, Stafford M, Marmot M. The menopausal transition was associated in a prospective study with decreased health functioning in women who report menopausal symptoms. *Journal of Clinical Epidemiology*. 2005; 58(7):719–27. <https://doi.org/10.1016/j.jclinepi.2004.09.016> PMID: 15939224
- Col NF, Guthrie JR, Politi M, Dennerstein L. Duration of vasomotor symptoms in middle-aged women: a longitudinal study. *Menopause*. 2009; 16(3):453–7. <https://doi.org/10.1097/gme.0b013e31818d414e> PMID: 19188852
- Nedrow A, Miller J, Walker M, Nygren P, Huffman LH, Nelson HD. Complementary and alternative therapies for the management of menopause-related symptoms—A systematic evidence review. *Archives of Internal Medicine*. 2006; 166(14):1453–65. ISI:000239211200005. <https://doi.org/10.1001/archinte.166.14.1453> PMID: 16864755
- Bair YA, Gold EB, Zhang G, Rasor N, Utts J, Upchurch DM, et al. Use of complementary and alternative medicine during the menopause transition: longitudinal results from the Study of Women's Health Across the Nation. *Menopause*. 2008; 15(1):32–43. <https://doi.org/10.1097/gme.0b013e31813429d6> PMID: 18090037
- van der Sluijs CP, Bensoussan A, Liyanage L, Shah S. Women's health during mid-life survey: the use of complementary and alternative medicine by symptomatic women transitioning through menopause in Sydney. *Menopause*. 2007; 14(3):397–403. <https://doi.org/10.1097/01.gme.0000236937.63078.f4>
- Dodin S, Blanchet C, Marc I, Ernst E, Wu T, Vaillancourt C, et al. Acupuncture for menopausal hot flashes. *Cochrane Database Syst Rev*. 2013; 7:CD007410. Epub 2013/07/31. <https://doi.org/10.1002/14651858.CD007410.pub2> PMID: 23897589.

18. Ee C, Xue C, Chondros P, Myers S, French S, Teede H, et al. Acupuncture for menopausal hot flashes. A randomized trial. *Ann Intern Med.* 2016; 164:146–54. <https://doi.org/10.7326/M15-1380> PMID: [26784863](https://pubmed.ncbi.nlm.nih.gov/26784863/)
19. Pirotta M, Ee C, Teede H, Chondros P, French S, Myers S, et al. Acupuncture for menopausal vasomotor symptoms: study protocol for a randomised controlled trial. *Trials.* 2014; 15:224. Epub 2014/06/14. <https://doi.org/10.1186/1745-6215-15-224> PMID: [24925094](https://pubmed.ncbi.nlm.nih.gov/24925094/); PubMed Central PMCID: [PMC4066294](https://pubmed.ncbi.nlm.nih.gov/PMC4066294/).
20. Sloan JA, Loprinzi CL, Novotny PJ, Barton DL, Lvasseur BI, Windschitl H. Methodologic lessons learned from hot flash studies. *J Clin Oncol.* 2001; 19(23):4280–90. MEDLINE:11731510. <https://doi.org/10.1200/JCO.2001.19.23.4280> PMID: [11731510](https://pubmed.ncbi.nlm.nih.gov/11731510/)
21. Freeman EW, Ensrud KE, Larson JC, Guthrie KA, Carpenter JS, Joffe H, et al. Placebo improvement in pharmacologic treatment of menopausal hot flashes: time course, duration, and predictors. *Psychosom Med.* 2015; 77(2):167–75. Epub 2015/02/04. <https://doi.org/10.1097/PSY.000000000000143> PMID: [25647753](https://pubmed.ncbi.nlm.nih.gov/25647753/); PubMed Central PMCID: [PMC4333078](https://pubmed.ncbi.nlm.nih.gov/PMC4333078/).
22. Thurston RC, Joffe N. Vasomotor Symptoms and Menopause: Findings from the Study of Women's Health across the Nation. *Obstetrics and gynecology clinics of North America.* 2011; 38(3):489–501. <https://doi.org/10.1016/j.ogc.2011.05.006> PMID: [21961716](https://pubmed.ncbi.nlm.nih.gov/21961716/)
23. Mishra GD, Kuh D. Health symptoms during midlife in relation to menopausal transition: British prospective cohort study. *Br Med J.* 2012;344.
24. Herber-Gast G-CM, Mishra GD, van der Schouw YT, Brown WJ, Dobson AJ. Risk factors for night sweats and hot flushes in midlife: results from a prospective cohort study. *Menopause (New York, NY).* 2013; 20(9):953–9. <https://doi.org/10.1097/GME.0b013e3182844a7c> PMID: [23531688](https://pubmed.ncbi.nlm.nih.gov/23531688/)
25. van Die MD, Teede HJ, Bone KM, Reece JE, Burger HG. Predictors of placebo response in a randomized, controlled trial of phytotherapy in menopause. *Menopause.* 2009; 16(4):792–6. MEDLINE:19587583. <https://doi.org/10.1097/GME.0b013e318199d5e6> PMID: [19587583](https://pubmed.ncbi.nlm.nih.gov/19587583/)
26. White P, Bishop FL, Prescott P, Scott C, Little P, Lewith G. Practice, practitioner, or placebo? A multifactorial, mixed-methods randomized controlled trial of acupuncture. *Pain.* 2012; 153(2):455–62. MEDLINE:22169359. <https://doi.org/10.1016/j.pain.2011.11.007> PMID: [22169359](https://pubmed.ncbi.nlm.nih.gov/22169359/)
27. Devilly GJ, Borkovec TD. Psychometric properties of the credibility/expectancy questionnaire. *J Behav Ther Exp Psychiatry.* 2000; 31(2):73–86. MEDLINE:11132119. PMID: [11132119](https://pubmed.ncbi.nlm.nih.gov/11132119/)
28. Sackett DL. Commentary: Measuring the success of blinding in RCTs: don't, must, can't or needn't? *Int J Epidemiol.* 2007; 36(3):664–5. MEDLINE:17675306. <https://doi.org/10.1093/ije/dym088> PMID: [17675306](https://pubmed.ncbi.nlm.nih.gov/17675306/)
29. Borud EK, Alraek T, White A, Fonnebo V, Eggen AE, Hammar M, et al. The Acupuncture on Hot Flushes Among Menopausal Women (ACUFLASH) study, a randomized controlled trial. *Menopause.* 2009; 16(3):484–93. MEDLINE:19423996. <https://doi.org/10.1097/gme.0b013e31818c02ad> PMID: [19423996](https://pubmed.ncbi.nlm.nih.gov/19423996/)
30. Kim KH, Kang KW, Kim DI, Kim HJ, Yoon HM, Lee JM, et al. Effects of acupuncture on hot flashes in perimenopausal and postmenopausal women—a multicenter randomized clinical trial. *Menopause-J N Am Menopause Soc.* 2010; 17(2):269–80. <https://doi.org/10.1097/gme.0b013e3181bfac3b> PMID: [19907348](https://pubmed.ncbi.nlm.nih.gov/19907348/)
31. Nir Y, Huang MI, Schnyer R, Chen B, Manber R. Acupuncture for postmenopausal hot flashes. *Maturitas.* 2007; 56(4):383–95. ISI:000245757900006. <https://doi.org/10.1016/j.maturitas.2006.11.001> PMID: [17182200](https://pubmed.ncbi.nlm.nih.gov/17182200/)
32. Greendale GA, Gold EB. Lifestyle factors: are they related to vasomotor symptoms and do they modify the effectiveness or side effects of hormone therapy? *Am J Med.* 2005; 118 Suppl 12B:148–54. Epub 2006/01/18. <https://doi.org/10.1016/j.amjmed.2005.09.049> PMID: [16414341](https://pubmed.ncbi.nlm.nih.gov/16414341/).
33. Stefanopoulou E, Hunter MS. Symptom perception in healthy menopausal women: Can we predict concordance between subjective and physiological measures of vasomotor symptoms? *American journal of human biology: the official journal of the Human Biology Council.* 2014; 26(3):389–94. Epub 2014/03/05. <https://doi.org/10.1002/ajhb.22530> PMID: [24590561](https://pubmed.ncbi.nlm.nih.gov/24590561/).
34. Hunter MS, Gentry-Maharaj A, Ryan A, Burnell M, Lanceley A, Fraser L, et al. Prevalence, frequency and problem rating of hot flushes persist in older postmenopausal women: impact of age, body mass index, hysterectomy, hormone therapy use, lifestyle and mood in a cross-sectional cohort study of 10,418 British women aged 54–65. *BJOG: an international journal of obstetrics and gynaecology.* 2012; 119(1):40–50. <https://doi.org/10.1111/j.1471-0528.2011.03166.x> PMID: [22008610](https://pubmed.ncbi.nlm.nih.gov/22008610/)
35. Duffy OK, Iversen L, Aucott L, Hannaford PC. Factors associated with resilience or vulnerability to hot flushes and night sweats during the menopausal transition. *Menopause (New York, NY).* 2013; 20(4):383–92. <https://doi.org/10.1097/gme.0b013e31827655cf> PMID: [23250082](https://pubmed.ncbi.nlm.nih.gov/23250082/)



36. Price DD, Finniss DG, Benedetti F. A comprehensive review of the placebo effect: recent advances and current thought. *Annu Rev Psychol.* 2008; 59:565–90. MEDLINE:17550344. <https://doi.org/10.1146/annurev.psych.59.113006.095941> PMID: 17550344
37. Hrobjartsson A, Kaptchuk TJ, Miller FG. Placebo effect studies are susceptible to response bias and to other types of biases. *Journal of clinical epidemiology.* 2011; 64(11):1223–9. MEDLINE:21524568. <https://doi.org/10.1016/j.jclinepi.2011.01.008> PMID: 21524568
38. Price S, Mercer SW, MacPherson H. Practitioner empathy, patient enablement and health outcomes: a prospective study of acupuncture patients. *Patient Educ Couns.* 2006; 63(1–2):239–45. Epub 2006/02/04. <https://doi.org/10.1016/j.pec.2005.11.006> PMID: 16455221.
39. MacPherson H, Mercer SW, Scullion T, Thomas KJ. Empathy, enablement, and outcome: An exploratory study on acupuncture patients' perceptions. *Journal of Alternative and Complementary Medicine.* 2003; 9(6):869–76. ISI:000187883800011. <https://doi.org/10.1089/107555303771952226> PMID: 14736359
40. Paterson C, Unwin J, Joire D. Outcomes of traditional Chinese medicine (traditional acupuncture) treatment for people with long-term conditions. *Complementary therapies in clinical practice.* 2010; 16(1):3–9. Epub 2010/02/05. <https://doi.org/10.1016/j.ctcp.2009.08.001> PMID: 20129402.
41. Rutherford BR, Roose SP. A model of placebo response in antidepressant clinical trials. *The American journal of psychiatry.* 2013; 170(7):723–33. Epub 2013/01/16. <https://doi.org/10.1176/appi.ajp.2012.12040474> PMID: 23318413; PubMed Central PMCID: PMC3628961.
42. Linde K, Niemann K, Meissner K. Are Sham Acupuncture Interventions More Effective than (Other) Placebos? A Re-Analysis of Data from the Cochrane Review on Placebo Effects. *Forschende Komplementarmedizin.* 2010; 17(5):259–64. <https://doi.org/10.1159/000320374> PMID: 20980765
43. Hrobjartsson A, Gotzsche PC. Placebo interventions for all clinical conditions. *Cochrane Database Syst Rev.* 2010;(1):Cd003974. Epub 2010/01/22. <https://doi.org/10.1002/14651858.CD003974.pub3> PMID: 20091554.
44. Armour M, Dahlen HG, Smith CA. More Than Needles: The Importance of Explanations and Self-Care Advice in Treating Primary Dysmenorrhea with Acupuncture. *Evid Based Complement Alternat Med.* 2016; 2016:3467067. Epub 2016/06/01. <https://doi.org/10.1155/2016/3467067> PMID: 27242909; PubMed Central PMCID: PMC4875987.
45. Lund I, Naslund J, Lundeberg T. Minimal acupuncture is not a valid placebo control in randomised controlled trials of acupuncture: a physiologist's perspective. *Chinese medicine.* 2009; 4:1. Epub 2009/02/03. <https://doi.org/10.1186/1749-8546-4-1> PMID: 19183454; PubMed Central PMCID: PMC2644695.
46. Lundeberg T, Lund I, Naslund J, Thomas M. The Emperors sham—wrong assumption that sham needling is sham. *Acupunct Med.* 2008; 26(4):239–42. MEDLINE:19098696. PMID: 19098696
47. Lundeberg T, Lund I, Sing A, Naslund J. Is Placebo Acupuncture What It Is Intended to Be? Evidence-Based Complementary and Alternative Medicine. 2011:1–5. <https://doi.org/10.1093/ecam/nep049> PMID: 19525330
48. Zhang CS, Tan HY, Zhang GS, Zhang AL, Xue CC, Xie YM. Placebo Devices as Effective Control Methods in Acupuncture Clinical Trials: A Systematic Review. *PLoS ONE.* 2015; 10(11):e0140825. <https://doi.org/10.1371/journal.pone.0140825> PMID: 26536619
49. Kaptchuk TJ, Shaw J, Kerr CE, Conboy LA, Kelley JM, Csordas TJ, et al. "Maybe I made up the whole thing": placebos and patients' experiences in a randomized controlled trial. *Culture, medicine and psychiatry.* 2009; 33(3):382–411. MEDLINE:19597976. <https://doi.org/10.1007/s11013-009-9141-7> PMID: 19597976