



**Thank you for downloading this document from the RMIT Research Repository.**

The RMIT Research Repository is an open access database showcasing the research outputs of RMIT University researchers.

RMIT Research Repository: <http://researchbank.rmit.edu.au/>

**Citation:**

ZHANG, R, Wang, X and John, S 2018, 'A comprehensive review of the techniques on regenerative shock absorber systems', *Energies*, vol. 11, no. 5, pp. 1-43.

**See this record in the RMIT Research Repository at:**

<https://researchbank.rmit.edu.au/view/rmit:47286>

**Version:** Accepted Manuscript

**Copyright Statement:**

© 2018 MDPI (Basel, Switzerland)  
Creative Commons Attribution 4.0 International License.



**Link to Published Version:**

<https://dx.doi.org/10.3390/en11051167>

**PLEASE DO NOT REMOVE THIS PAGE**

Review

# A Comprehensive Review of the Techniques on Regenerative Shock Absorber Systems

Ran Zhang, Xu Wang \*  and Sabu John 

School of Engineering, RMIT University, Bundoora Campus, East, Corner Plenty Rd and McKimmies Rd, Bundoora, VIC 3083, Australia; s3253199@student.rmit.edu.au (R.Z.); sabu@rmit.edu.au (S.J.)

\* Correspondence: xu.wang@rmit.edu.au; Tel.: +61-3-9925-6028; Fax: +61-3-9925-6108

Received: 28 March 2018; Accepted: 3 May 2018; Published: 7 May 2018



**Abstract:** In this paper, the current technologies of the regenerative shock absorber systems have been categorized and evaluated. Three drive modes of the regenerative shock absorber systems, namely the direct drive mode, the indirect drive mode and hybrid drive mode are reviewed for their readiness to be implemented. The damping performances of the three different modes are listed and compared. Electrical circuit and control algorithms have also been evaluated to maximize the power output and to deliver the premium ride comfort and handling performance. Different types of parameterized road excitations have been applied to vehicle suspension systems to investigate the performance of the regenerative shock absorbers. The potential of incorporating nonlinearity into the regenerative shock absorber design analysis is discussed. The research gaps for the comparison of the different drive modes and the nonlinearity analysis of the regenerative shock absorbers are identified and, the corresponding research questions have been proposed for future work.

**Keywords:** regenerative; shock absorber; drive mode; vehicle dynamics; output power; nonlinearity

## 1. Introduction

Due to the growing number of vehicles over recent decades and the increase of clean energy demand, the energy dissipation of a vehicle on different parts has been investigated. Recently, regenerative shock absorber systems caught the attention of many researchers because of the capability to harvest dissipated energy, due to its feasibility and accessibility. The fuel energy consumption of a car was analysed by Lafarge, Cagin [1] who stated that the fuel energy dissipated to drive the wheels accounts for up to 22.5% of the total fuel energy consumed, which ranks it the second following engine heat losses of 75.2%. In reality, the percentage of the dissipated fuel energy on driving the wheels is expected to increase as a result of the uneven or rough road surfaces.

Unlike the conventional shock absorber which reduces the vibration through viscous damping and converts the kinetic energy into heat energy dissipated, the regenerative shock absorber converts the kinetic energy mainly into electrical energy. This harvested electrical energy can be stored in the battery for later use. According to Zuo, Scully [2], automobiles contribute 70% of the carbon monoxide, 45% of the nitrogen oxide and 34% of the hydrocarbon pollution throughout the United States. One of the benefits brought by the regenerative shock absorber is that it can extend the mileage of the vehicle by saving petroleum fuel or electrical energy to achieve a reduction in the greenhouse gas emission.

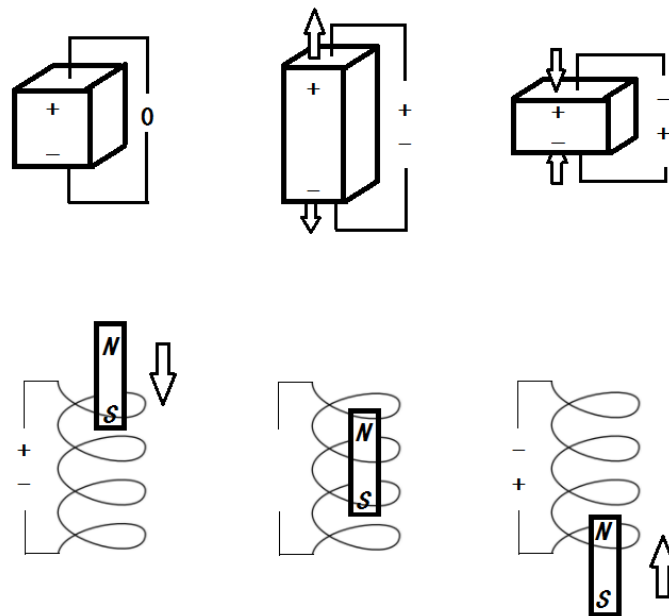
In addition, the regenerative shock absorber can operate as a part of the active suspension system in order to improve the ride and comfort performance [3–7]. Proportional–integral–derivative control is commonly used in these applications for obtaining stable output power or reducing vibrations [8,9]. Based on the conservation of energy principle, better ride and comfort performance resulting from less kinetic energy or less vibration energy of the suspension system yields less amount of harvested energy. This contradiction can be overcome by adopting the control system which can make a compromise for

both the energy harvesting and ride and comfort performances. One good concept proposed by Elliott and Zilletti [10] was to utilize the electromagnetic transducer as either a shunt damper or an energy harvester. Therefore, the system can be switched between the different functionalities for desired performance output. It was also shown in their results that the coupling coefficient increased with the size of the electromagnetic transducer, meaning that the mechanism combining the shunt damper and energy harvester can operate well especially in the large-scale transducer such as a regenerative shock absorber.

The future trends of the regenerative shock absorber would be:

1. High power to weight ratio
2. Better mechanical-electrical energy conversion efficiency
3. High compatibility with the vehicle.

Among the methods in which the kinetic energy was converted into electrical energy, as shown in Figure 1, the use of the piezoelectric material and electromagnetic generator were frequently discussed because of their outstanding compatibilities and high efficiencies. Xiao, Wang [11] discussed the feasibility of having the piezoelectric (PZT) generator in 2 degrees of freedom (2DOF) quarter vehicle suspension system as an additional energy harvesting element, as shown in Figure 2. It was found that the improvement of the resonant power output of the 2DOF piezoelectric system only and largely depends on the cabin mass to tyre mass ratio and suspension stiffness to tyre stiffness ratio.



**Figure 1.** Piezoelectric energy generating (**top**) and electromagnetic energy generating (**bottom**).

Lee, Jang [12] combined the piezoelectric transducers with a shock absorber to generate electricity from the fluid pressure change induced by the piston displacement. Xie and Wang [13] discussed the effect of the dimension of the piezoelectric plate, input velocity and road roughness. Piezoelectric transduction was better than electromagnetic and electrostatic transduction for relatively high power density [14]. It also had the advantages of the compact size and easy implementation [15]. However, for the applications where larger displacement was most involved, the advantages of the piezoelectric transduction were compromised.

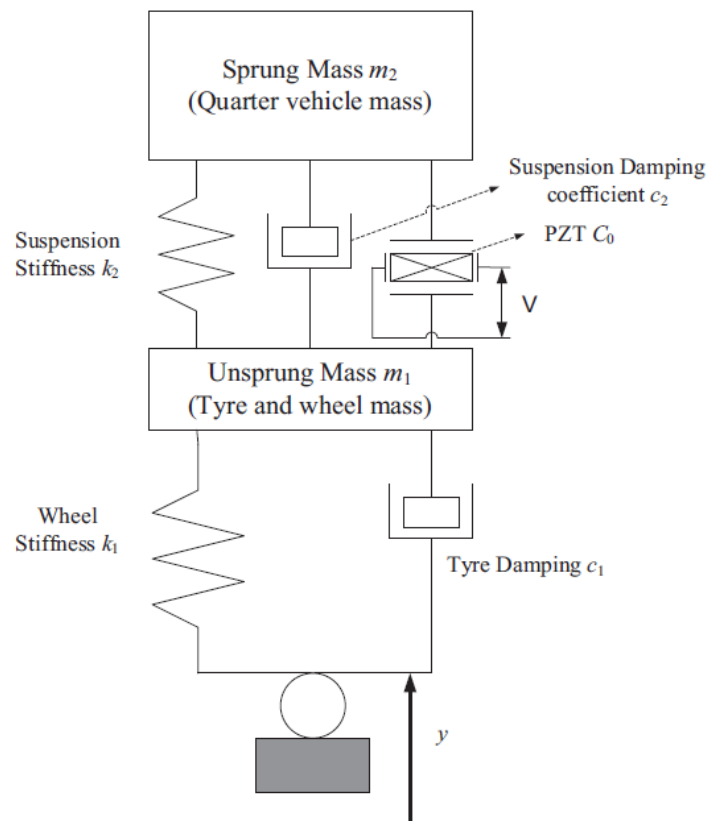


Figure 2. Quarter vehicle suspension system integrated with a piezoelectric generator [11]. PZT: piezoelectric.

Xu, Shan [16] proposed a hybrid energy harvester that combines both the piezoelectric and electromagnetic transducers, as shown in Figure 3:

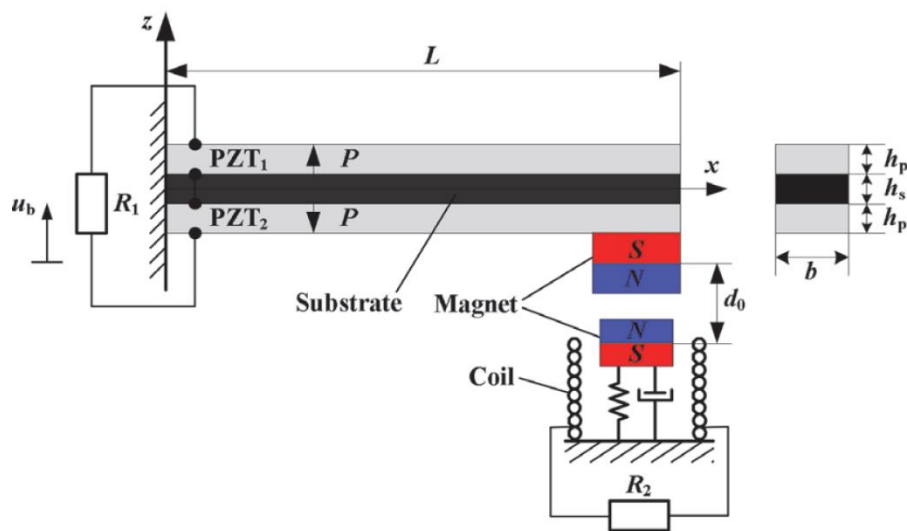


Figure 3. Hybrid energy harvester system combining piezoelectric and electromagnetic transducers [16].

The results show that this combined mechanism was able to broaden the bandwidth and increase the output power, thus it was superior to any of the single mechanisms. It was proven that it inherited the advantage of high power density from the piezoelectric transduction and simultaneously it operated well under the low frequency excitation like an electromagnetic transducer.

Poulin, Sarraute [17] constructed the equivalent impedance models to compare between two electromechanical systems. It was also concluded in the study that the piezoelectric system has higher power density than the electromagnetic system and thus is more suitable to microsystems. The comparison results are listed in Table 1 below.

**Table 1.** Comparison between the piezoelectric system and electromagnetic system [17].

Comparison Elements between the Two Systems	Electromagnetic System	Piezoelectric System
Strain	Low	High
Displacement	High	Low
Voltage	Variable	High
Current	Variable	Low
Resonant frequency	Variable	High
Output impedance	Resistive	Capacitive
Adapted load	Variable	High

A typical shock absorber on a commercial vehicle needs to be reliable and able to operate in the frequency range of 1–30 Hz and with a maximum shock displacement of 0.1 m. It can be seen from Table 1 that in a regenerative shock absorber the electromagnetic transducer can outperform the piezoelectric transducer due to lower strain, low resonant frequency and higher displacement.

Mitcheson, Reilly [18] compared different transducer technologies and it was found that when the generator size increases, piezoelectric transducer gradually loses its advantage over electromagnetic transducer in the high frequency range. Similar conclusion was drawn by Elliott and Zilletti [10], the increased size of the transducer does not improve the performance of the piezoelectric transducer, however it can improve the performance of the electromagnetic transducer. Therefore, more studies have been focused on the electromagnetic system as it is more feasible considering the modal resonant frequency of the vehicle, displacement of the shock absorber and its packaging size. In addition, compared with piezoelectric transduction, electromagnetic transduction is more reliable and cost friendly.

The power output of the electromagnetic energy harvesting system depends on total resistance and voltage output which, according to Faraday's law of induction, can be expressed by:

$$U = Bl \cdot v \quad (1)$$

where  $B$  is the magnetic field intensity,  $l$  is the total coil length and  $v$  is the coil speed with respect to magnets.

Therefore, the increase of the system power output can be realized through the improvement of the coil and magnet arrangement and configuration or the amplification of the coil speed with respect to magnets. These are two main focuses of the recent development innovations for the electromagnetic regenerative shock absorbers.

The direct drive system has the magnets and coils directly attached to the vehicle body and wheel assembly, respectively. When subjected to the reciprocating movement due to the road unevenness, the relative motion between the magnets and coil generates electricity as a result of the direct attachment to the oscillators. Therefore, the coil speed with respect to the magnets strictly depends on the relative speed between the vehicle cabin and wheel. The relative speed depends on the driving speeds of the vehicle and road profiles. As a result, only the electromagnetic constant  $Bl$  can be designed, changed and optimized to increase the power output.

Instead of increasing the electromagnetic constant  $Bl$  of the direct drive system, an indirect drive system relies on the speed amplifying mechanism which can increase the coil speed with respect to the magnets. Most regenerative shock absorber can be categorized into these two drive modes for adaption with the requirements of energy harvesting and vibration control.

For the direct drive system, the efforts were most focused on finding the optimum magnet arrangement with a higher flux gradient per unit mass [19–21], as well as the optimum coil profile [22] and the optimum mass distribution of the transducer [23]. However, their feasibility for application as the shock absorber is still undetermined. Whereas for the indirect drive system, questions have been raised on maintaining the ride comfort and road handling ability since it is the main function of the shock absorber, therefore the compatibility of the indirect drive regenerative shock absorber onto the vehicle would also be focused in the future.

Many innovative designs including different types of the transducers had been proposed, such as piezoelectric and electromagnetic transducers which includes magnetorheological, hydraulic and pneumatic drive systems [24–28]. Each of these types had its own advantages and disadvantages and was only applicable in certain applications. Due to the packaging size and mass restrictions of the shock absorber, the transducers are hard to be fairly compared to determine which type is most suitable for the application of the shock absorbers.

In order to maximize the energy harvesting efficiency, further investigations have been conducted on the electrical circuits and control algorithms. Because of the variation of the transducers utilized in the harvester, different electrical circuits and control algorithms may not work equally well.

This paper reviews the recent technologies of the regenerative shock absorber. The highlight of this paper is to categorize the regenerative shock absorbers based on their drive modes and study the associated damping performance, energy harvesting efficiency, electrical circuit and control algorithm. Each of these aspects will be summarized in the tables. The excitation input of the regenerative shock absorber will be applied as sinusoidal, step and random inputs. The possibility and potential of the nonlinear regenerative shock absorber will be discussed. Lastly, the future research direction of the regenerative shock absorber design will be discussed based on the research gaps. This paper aims to review the up to date techniques involved in the regenerative shock absorber design and closing the research gaps identified to pave the way for the future study.

## 2. Direct Drive Regenerative Shock Absorber Systems and Technologies

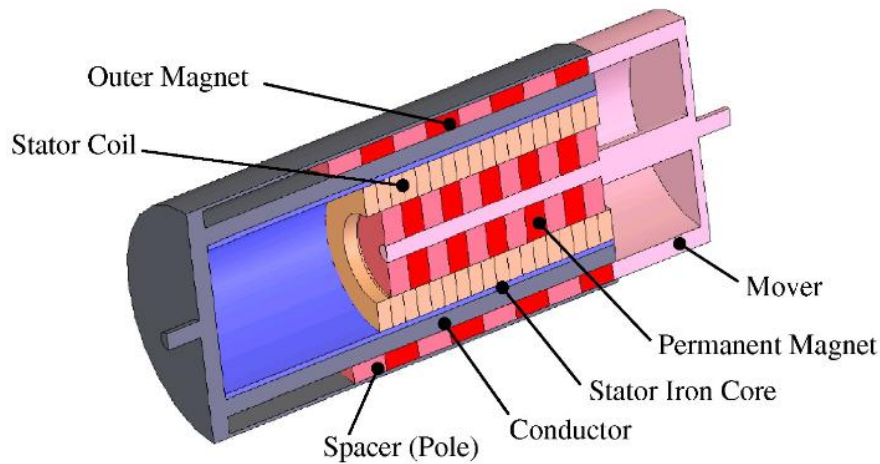
A direct drive system has attracted substantial amount of interests due to its compact design and simple manufacturing. Zuo, Scully [2] proposed a 1:2 scale linear regenerative shock absorber system with longitudinal magnet arrangement patterns. Also, an aluminum center rod and steel outer shell was added to increase the magnetic field intensity. This prototype was able to produce 2–8 W power and it was found that more power can be harvested at the modal resonant frequencies.

### 2.1. Magnet Arrangement Pattern Design

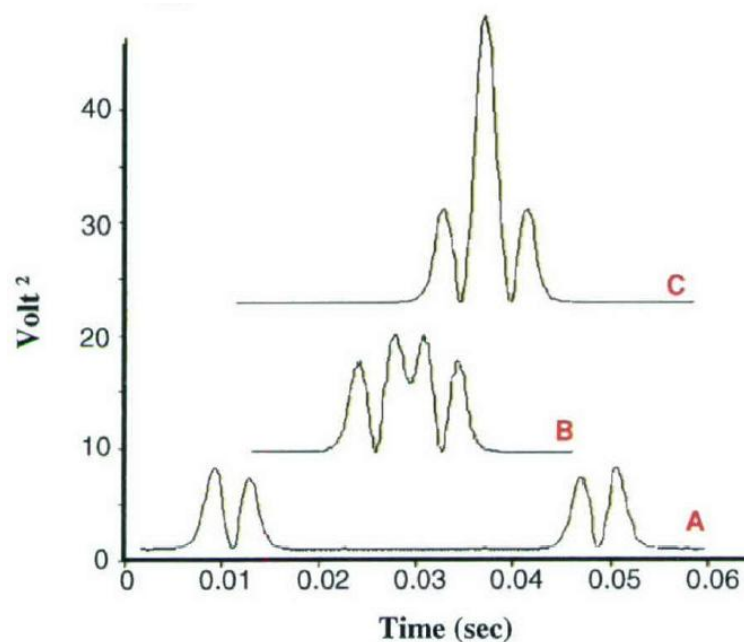
In order to further increase the magnetic field intensity for high output power, different magnet patterns were proposed. One of the easiest ways is to double the number of the magnets, resulting in more magnetic flux lines that can be trapped in between two layers of magnets where the coils are wired, thus increasing the output voltage. Many researchers have adopted this way in their designs as it is efficient and simple to build [29–31].

It is also shown in Figure 4 that in a magnet stack, the magnets are not placed right next to each other, instead they are separated by spacers. The same layout was adopted by Cheung [32] who proposed a magnet sliding tube designed for harvesting wave energy where the net flux density in the spacer area between two opposing polarity magnets is zero due to the complete flux cancellation as shown in Figure 5 where Case A represents the separation, in this case, flux cancellation did not take place due to the short ranged magnetic potential, the behavior was just the sum of two isolated single magnets. Cases B and C represent the separation decreased, in these cases, the flux cancellation effect became more prominent and the amount of captured energy increased accordingly to reach a maximum at a gap of about 1/3 of the magnet length. The captured energy in this case increased by 60%. However, the two side peaks remained nearly unchanged because of the end effect. As the thickness of the spacer gradually decreases (from A to C), the effect of the flux cancellation decreases

and the captured energy reaches the maximum when the spacer had the same thickness of a magnet. As a result, the captured energy can be increased by 60%. The same result was obtained by Ebrahimi, Bolandhemmat [30] who concluded that magnet stack can yield the highest output power with spacers of equal thickness.



**Figure 4.** Design of the electromagnetic damper with two layers of magnets [30].



**Figure 5.** Captured energy versus the dimension of a spacer between two magnets [32].

The main limit involved in using two layers of magnets or spaced magnets is the problem of the extra weight. The excessive weight will result in more fuel consumption, which is contradictory to the original purpose of the regenerative shock absorber.

The magnetic arrangement pattern of the Halbach array was studied by many researchers for its high weighted magnetic flux density compared with other magnet arrangement patterns. As shown in the Figure 6, by turning the polarity orientation of the magnets 90 degree each time to form a Halbach array, the magnetic flux lines can be accumulated on one side of the Halbach array that is close to the coils, leaving nearly zero magnetic field intensity on the other side of the Halbach array. How Halbach array can actually affect the energy harvesting performance of a regenerative

shock absorber system was investigated by Zhang [33]. He discovered that the Halbach array has the highest magnetic flux density compared to the conventional longitudinal and transverse magnet polarity orientation layouts with or without the spacer shown in Figure 7, because the radial magnets in Halbach array arrangement perform better than the other magnet arrangement in achieving the high magnetic flux density.

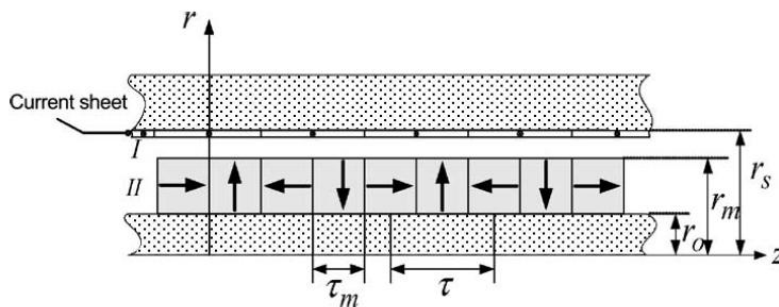


Figure 6. Halbach array magnet stack [34].

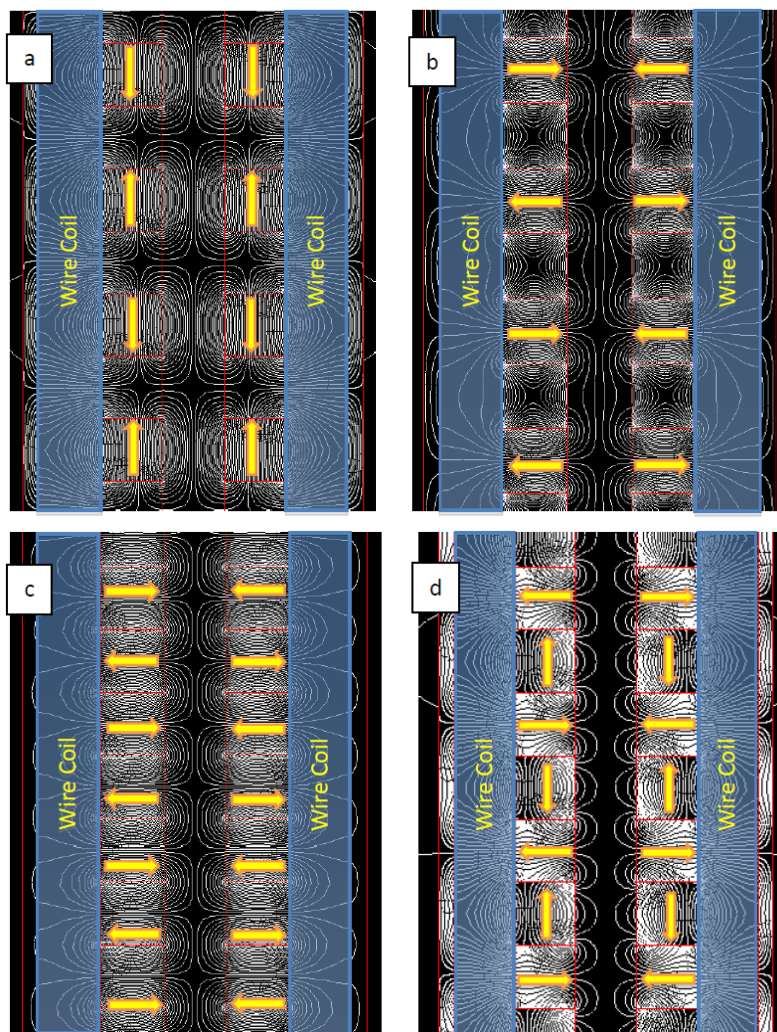
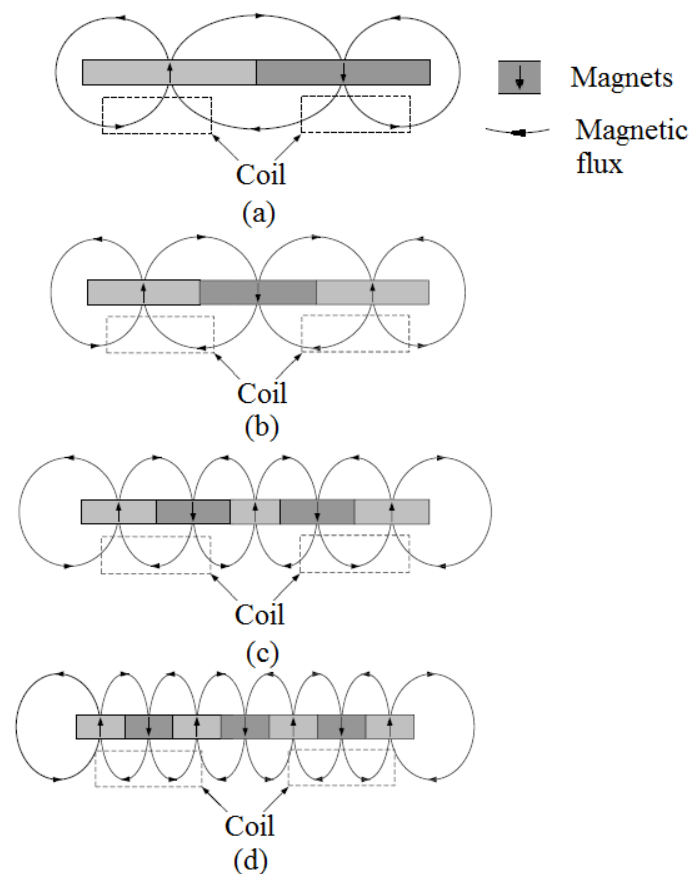


Figure 7. Magnetic flux plots of (a) longitudinal pattern with spacer; (b) transverse pattern with spacer; (c) transverse pattern; (d) Halbach array [33].



Zhu, Beeby [35] designed a vibrational energy harvester using the magnet arrangement pattern of the Halbach array and compare the Halbach array with 4 other different magnet arrangement patterns shown in Figure 8. It was found that the magnetic field strength in the Halbach array is highest among all the magnet arrangement patterns. However, the voltage output of the Halbach array pattern with spacers is greater than that of layout (a) and (b) but almost 10 times smaller than layout (c) and (d). This is because although the Halbach array has a stronger magnetic field, its magnetic flux gradient is lower than that in (c) and (d). Therefore, it should be realized that the Halbach array may not be the solution for all the problems in question and reducing the thickness of magnets can lead to better results. But in the research, longitudinally arranged polarity orientation of the magnets was not taken into consideration, thus the most efficient magnetic arrangement was still unclear.



**Figure 8.** Transverse magnetic array with (a) two magnets; (b) three magnets; (c) five magnets and (d) seven magnets for comparison with the Halbach array [35].

The use of the Halbach array magnet arrangement pattern can also be helpful in obtaining the enhanced dynamics. Long, He [36] designed a suspension system utilizing the magnets arranged in Halbach array to obtain a good damping performance. It has been experimentally validated that the Halbach array with a controller can improve the system stability. Some researchers combined the two above-mentioned methods and proposed the double layers of the Halbach array magnet arrangement [31,35,37–40].

## 2.2. Coil Design

Regardless of which magnetic pattern is being used in the regenerative shock absorber, some studies suggested designing the coil based on the magnet arrangement. Tang, Lin [31] proposed to use a four-phase coil in one magnetic cycle, as shown in the Figure 9. The reason for that is shown in Figure 10 where higher normalized power can be obtained with higher coil phase number. More electromotive potential would be cancelled out if less coil phases are adopted.

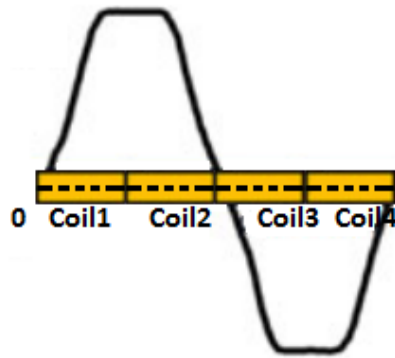


Figure 9. Four-phase coil design [31].

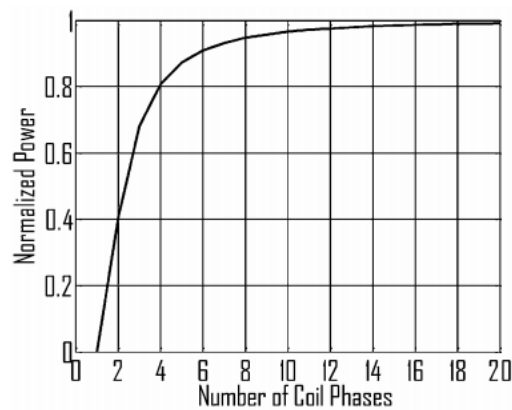


Figure 10. Normalized power vs. number of coil phases [31].

The coil profile was investigated by Elvin and Elvin [41] on the effect of the number of coil layers, coil resistance and gauge numbers. The results showed that with more number of layers more energy can be generated until it reaches its limit where too much energy begins to be dissipated due to the resistance of the extensive coil. Also, the use of a coil with less gauge number will not yield higher voltage but it has the commercial benefits and takes up less space. Different coil phase designs can also affect the system resonant frequency and the quality factor, resulting in the difference in system damping. This phenomenon can be found in the research conducted by Zuo, Scully [2] where 90 degree phase coil presents higher quality factor than 0 degree phase coil set, thus the electromagnetically induced damping on 90 degree phase coil set is lower. Quality factor can be important in evaluating the effect of the magnet coil combination on the energy harvesting efficiency since its influence on the system damping and power output cannot be ignored.

Different regenerative shock absorbers with the direct drive systems have been summarized below in Table 2.

**Table 2.** Summary of the direct drive regenerative shock absorber.

Presenter	Mechanism	Voltage Output (V)	Power Output (W)	Vehicle Speed (km/h) or Road Excitation Amplitude and Frequency (Hz)	Energy Harvesting Efficiency	System Resonant Frequency	Damping Ratio/Harvesting Bandwidth
Zuo, Scully [2]	Electromagnetic system	10 V	8 W	4 Hz	N/A	18.5 Hz for 0 phase coil set and 8 Hz for 90 phase coil set	21 Hz
Goldner, Zerigian [42]	Electromagnetic system	1.3 V	N/A	2 mm at 20 Hz	N/A	N/A	N/A
Gupta, Jendrzeyczyk [29]	Electromagnetic system with two layers of magnets	2.52 V	54 W	N/A	N/A	N/A	N/A
Xie and Wang [13]	Piezoelectric material	N/A	738 W	126 Km/h on class D road	N/A	N/A	N/A
Sapiński, Rosół [43]	Electromagnetic system	10 V	N/A	4.5 mm at 10 Hz	N/A	4 Hz	1 Hz
Tang, Lin [31]	Electromagnetic system	N/A	2.8 W	5 mm at 10 Hz	N/A	N/A	N/A
Wang, Ding [44]	Electromagnetic system	N/A	24.78 W	N/A	20.1%	1.5 Hz and 12 Hz	0.5 Hz
Asadi, Ribeiro [45]	Electromagnetic system	N/A	N/A	4.03 mm at 10 Hz	N/A	N/A	N/A
Chen and Liao [24]	Combination of MR damper and electromagnetic system	1.9 V	N/A	3 mm at 1 Hz	N/A	N/A	N/A
Sapiński, Rosół [46]	Combination of MR damper and electromagnetic system	2 V	0.4 W	4.5 mm at 4 Hz	N/A	4.5 Hz	1 Hz

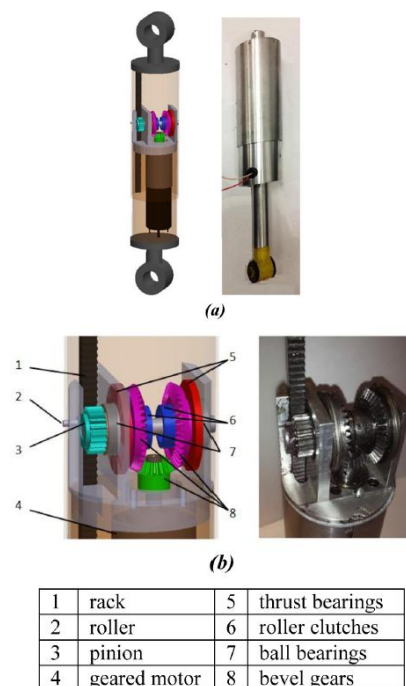
### 3. In-Direct Drive Regenerative Shock Absorber Systems and Its Technologies

Due to the weight limit of the magnets and coils, many attempts have been made to increase the coil speed with respect to the magnets.

The in-direct drive regenerative shock absorber system does not transfer the road excitation directly into the linear motion between the translator and the stator. Instead, it amplifies the input excitation through a variety of mechanisms and converts the linear motion mostly into a rotational motion. Many types of mechanisms that have been proposed include: the ball screw mechanism, rack and pinion mechanism, hydraulic mechanism, pneumatic mechanism and their variants. Among these mechanisms, the ball screw, rack and pinion and their variants can be regarded as mechanical motion rectifier due to the mechanical mechanism related working principle. The devices that utilize the hydraulic system or pneumatic system to deliver motion conversion and velocity amplification can be regarded as a fluid motion rectifier.

#### 3.1. Mechanical Motion Rectifier

Li, Zuo [47] proposed an innovative motion rectifier system, which can convert the up and down movement of the shock absorber into unidirectional rotation of the generator, shown in the Figure 11. The rack and pinion mechanism helps to convert and amplify the excitation displacement. The bidirectional linear motion to unidirectional rotation rectification is accomplished with the bevel gear and clutch. The experiments and simulations were carried out by the researchers and it showed that the prototype achieved over a high efficiency of 60% and 15 W power output was obtained when the vehicle is driven at a speed of 15 mph. Further investigation was conducted by Li and Zuo [48] to evaluate the performance of the prototype. A quarter car suspension model was constructed to simulate the situation where vehicle was driven on the ISO Class C road. It was found that the motion rectifier can achieve the road comfort and the road handling on a conventional vehicle. 60–84 W can be harvested from a quarter car regenerative suspension with the motion rectifier when travelling at 67.5 mph, which is more than that from the quarter car regenerative suspension without the motion rectifier.



**Figure 11.** (a) The prototype of the regenerative shock absorber and (b) the integrated Mechanical motion rectifier, as proposed by Li, Zuo [47].

Zhang, Zhang [49] and Guo, Liu [50] optimized the mechanical motion rectifier by proposing the dual overrunning clutch system. Two sets of racks and pinions and the 2 overrunning clutches attached allow the excitation amplification and motion rectification to occur simultaneously with limited space provided. The shaft rotates in one direction and drives the DC generator for power generation. The working principle is shown in Figure 12. The generated power was stored in the capacitor for other application. The fabricated prototype generated 4.302 W at 2.5 Hz with the excitation displacement amplitude of 7.5 mm. Additionally, the damping performance can be changed by adjusting the external load electric resistance.

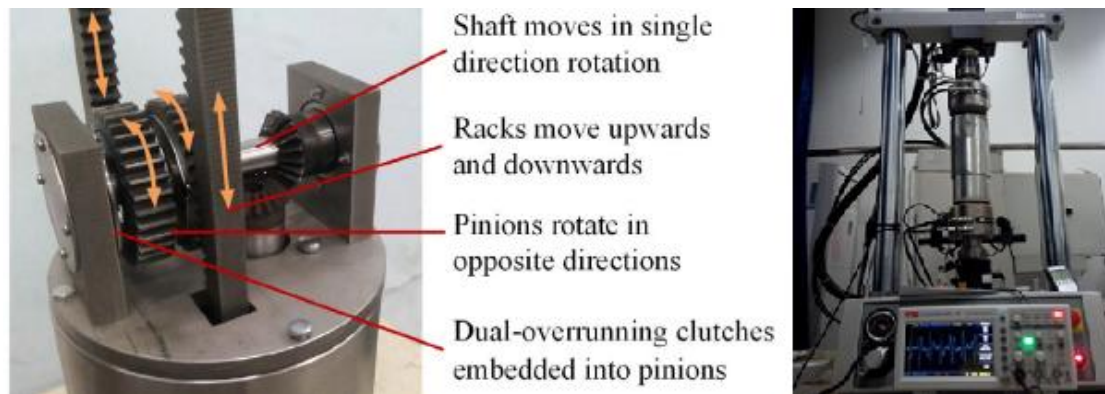


Figure 12. Dual overrunning clutch transmission system [49].

Another interesting design was proposed by Xie, Li [51]. Unlike other rack pinion system where the electrical generator provides the damping force, this design utilizes the traditional viscous damper in parallel with the secondary rack and pinions at the bottom, to provide damping and harvest energy. Considering the packaging size, however, this layout may not be feasible in a real application.

Ball screw mechanism was introduced as an alternative by many researchers [52–56], the schematic is shown in Figure 13. Similar to the rack and pinion system, it also converts the up and down motion into a rotational motion through a ball screw spinning along the thread. Due to the up and down movement of the shock absorber, the converted rotational motion is bidirectional and needs rectification as well. Zhang, Huang [57] incorporated the ball-screw mechanism and DC brushless motor into a regenerative shock absorber system. The experiment result showed that the maximum voltage of 17.5 V can be generated under the sine wave road input. Because of the low voltage, a condenser is needed to charge the battery. It was also pointed out by the author that the ride and comfort performance cannot be guaranteed under a high frequency road excitation.

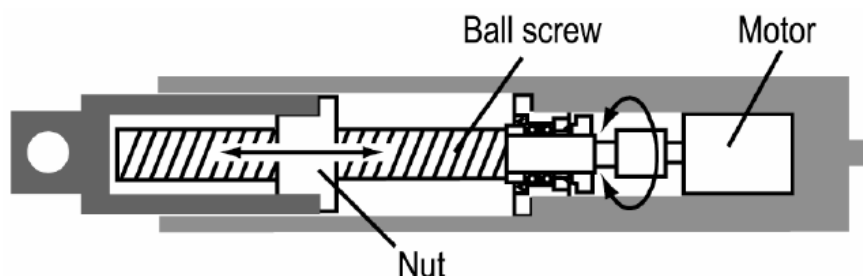
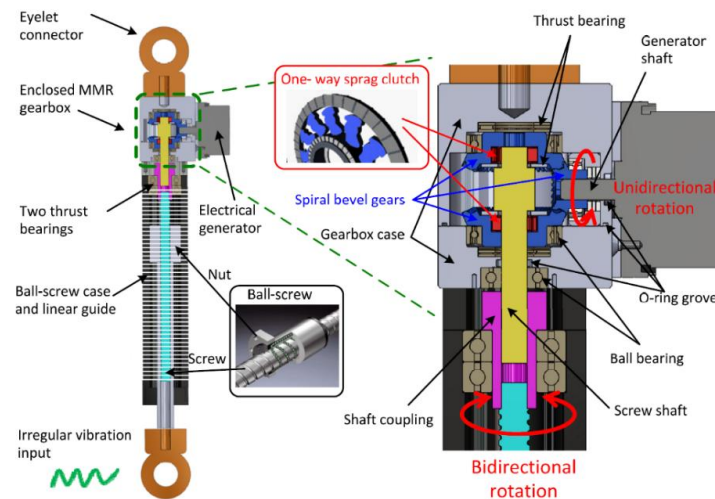


Figure 13. Ball screw indirect drive regenerative shock absorber system [58].

Another combined innovation on regenerative shock absorber was proposed by Liu, Xu [59] where a ball screw was installed for the conversion from the linear to rotary motion and two overrunning clutches were used for the rectification from the bidirectional to unidirectional motion, as shown in Figure 14. The input velocity amplification factor can be adjusted through a ball screw mechanism and kinetic energy can be harvested throughout the whole reciprocating motion of the shock body. The experimental results indicate that an average power output of 24.7 W can be harvested over an 8 s period, and the adjustable damping coefficient can be maintained close to the damping coefficient of the passenger vehicle shock absorbers.



**Figure 14.** The design of a mechanical motion rectifier based the energy-harvesting shock absorber using a ball-screw mechanism [59].

### 3.2. Fluid Motion Rectifier

Instead of converting the linear motion into rotational motion mechanically, the hydraulic/pneumatic systems were introduced in many energy harvester designs for smoother operation and less mechanical friction energy dissipation [27,60–66]. Like the other indirect drive regenerative shock absorber systems where the stroke velocity is amplified mechanically, the smoother operation and the motion rectification can be delivered simultaneously in the hydraulic system. Among all these innovations, Fang, Guo [67] developed an actively controlled hydraulic suspension system by using an oil pump to generate hydraulic pressure in the shock absorbers, as shown in Figure 15. The system had one-way check valves to control the direction of fluid flow, accelerometers in all four corners, and actuators and accumulators, to reduce the response time in the system and ensure that sufficient pressure is maintained in the system. Wang, Gu [68] proposed the similar hydraulic system with four check valves for flow rectification and found that the accumulators can be optimized to increase the power efficiency up to 40%.

The drawback of the hydraulic/pneumatic energy harvesting system is that the response time is delayed due to the flow rate and fluid compressibility, also, the rapture may lead to potential failure, resulting in an unreliable system that can cause accidents. To simplify the system, Galluzzi, Tonoli [69] developed a hydraulic regeneration system where check valves are placed inside the hydraulic piston to reduce the mechanical difficulty while amplifying the stroke velocity, as shown in Figure 16. The results show a 12% increase in harvested power over the regenerative shock absorber system without the proposed mechanical motion rectifier.

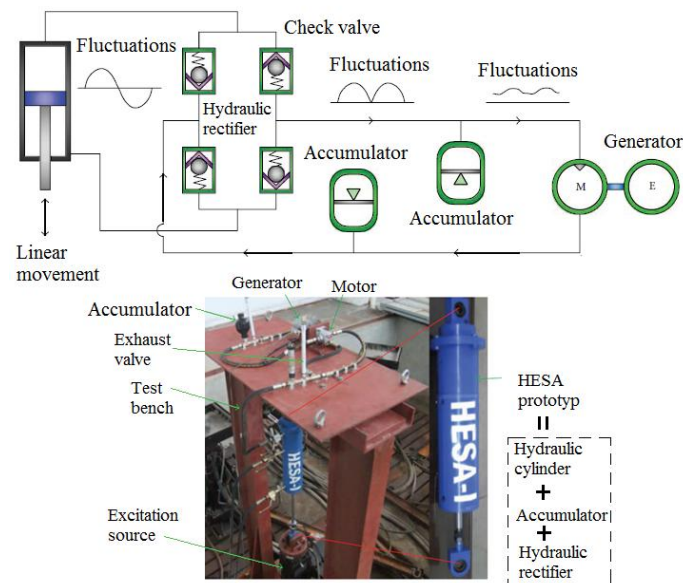


Figure 15. The hydraulic shock absorber prototype [67].

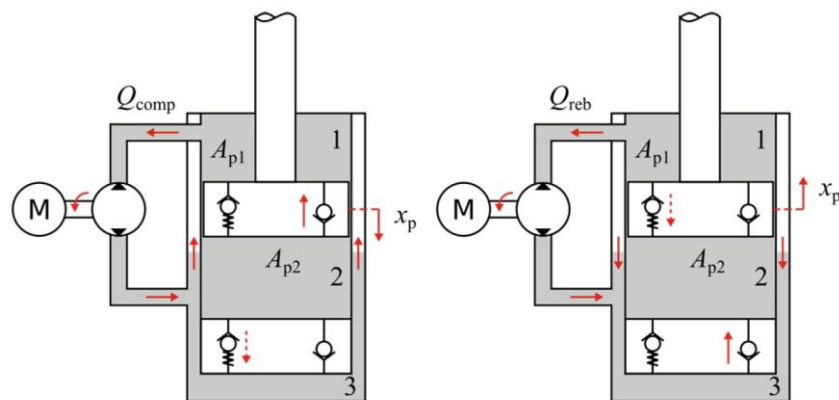


Figure 16. Working principle of the hydraulic regenerative shock absorber system without a mechanical motion rectifier [69].

Pneumatic suspension system was adopted by many vehicles especially in off road applications [70] due to its high energy density which meets the space limitation [71], and its comfort and changeable damping performance [72]. It can be converted into a regenerative system with the additional energy converting elements [73]. Shaiju and Mitra [74] proposed the idea where the oscillating motion energy of the vehicle sprung mass could be captured and stored in the form of compressed air energy. The theoretical results also showed that the vehicle dynamics could be improved by the pneumatic suspension system through being integrated with the braking system. The pneumatic system operates in a similar way as the hydraulic system due to the similar flow property, many authors regarded them as the same system [30,75]. Due to the compressible nature of air, however to some extent, the pneumatic system performs differently from the hydraulic system. Therefore, evaluation of the energy harvesting performance of the pneumatic regenerative shock absorber is identified as a research gap because few people have worked on it. Different indirect drive regenerative shock absorber systems have been summarized below in Table 3.

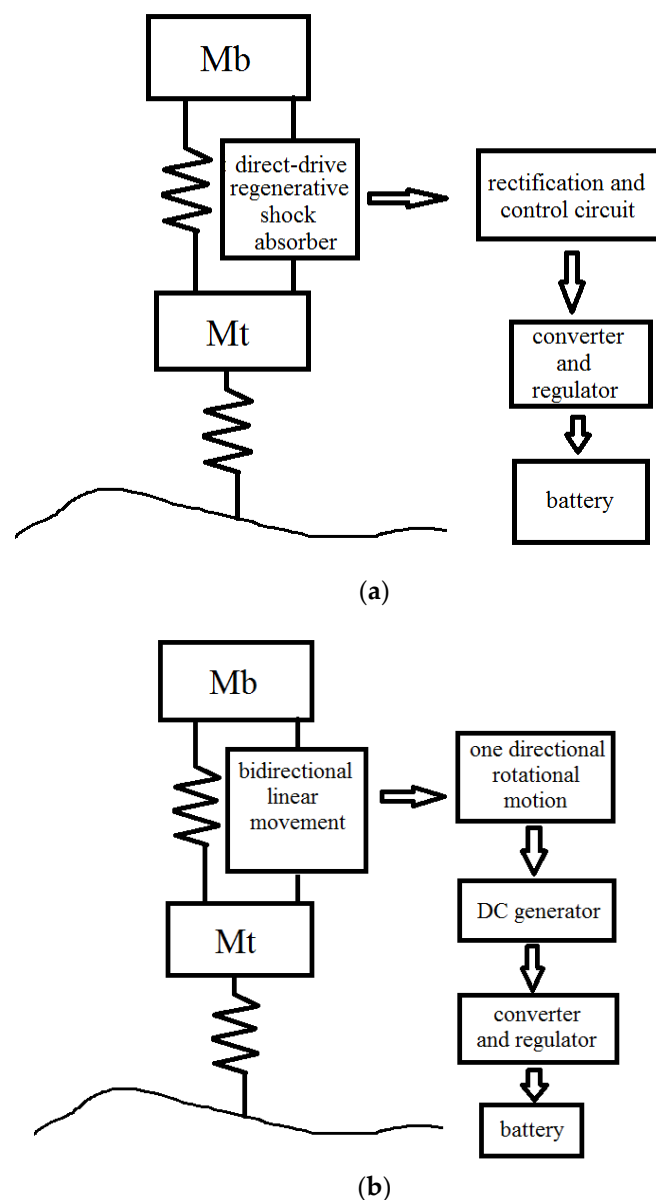
**Table 3.** Summary of the indirect drive regenerative shock absorbers.

Presenter	Mechanism	Voltage Output (V)	Power Output (W)	Vehicle (km/h) or Excitation Frequency (Hz)	Energy Harvesting Efficiency
Li and Zuo [48]	Rack and pinion	N/A	60–84 W	108 km/h on class C road	N/A
Gupta, Jendrzeczyk [29]	Rack and pinion	1.1 V	88.8 W	N/A	21%
Nakano [76]	Ball-screw	N/A	55.39 W	N/A	36%
Fang, Guo [67]	Hydraulic system with 4 check valves for rectification	N/A	6.2 W	0.48 Hz	16.6%
Choi, Seong [77]	Rack and pinion	15 V	40 W	20 mm at 3 Hz	N/A
Zhang, Zhang [49]	Rack and pinion, two overrunning clutches	3 V	4.302 W	7.5 mm at 2.5 Hz	54.98%
Zhang, Huang [57]	Ball screw	15 V	11.73 W	5 mm at 15 Hz	N/A
Chu, Zou [78]	Rod and helical slot	3.31 V	11.3 W	0.94 mm at 11 Hz	77%
Wang, Gu [68]	Hydraulic system	20 V	260 W	25 mm at 1 Hz	40%
Sabzehgar, Maravandi [79]	Algebraic screw	N/A	0.54 W	3.05 mm at 5.6 Hz	56%
Liu, Xu [59]	Ball screw with two one way clutches	N/A	24.7 W	2 mm at 4 Hz	51.9%
Kawamoto, Suda [55]	Ball screw	N/A	44 W	80 km/h on class C road	N/A
Zhang, Zhang [80]	DC generator connected to the hydraulic actuator	N/A	33.4 W	50 mm at 1.67 Hz	N/A
Shaiju and Mitra [74]	Pump powered by the compressed air	N/A	N/A	N/A	N/A



#### 4. Comparison between the Direct Drive System and Indirect Drive System

The regenerative shock absorber system can be divided into two main categories based on the drive mode. If the energy can be regenerated directly as a result of the linear movement between the two oscillators, namely the wheel assembly and the vehicle body, it can be categorized as the direct-drive regenerative shock absorber system. The other type, which is the indirect drive regenerative shock absorber system, relies on a certain mechanism to achieve the conversion between the linear motion of the shock absorber and the rotary motion of the generator. During this process the input speed can be amplified by the mechanism. The 2DOF lumped mass spring systems can be applied to represent the quarter car suspension systems with these two categories of the regenerative shock absorber systems, as shown in Figure 17.



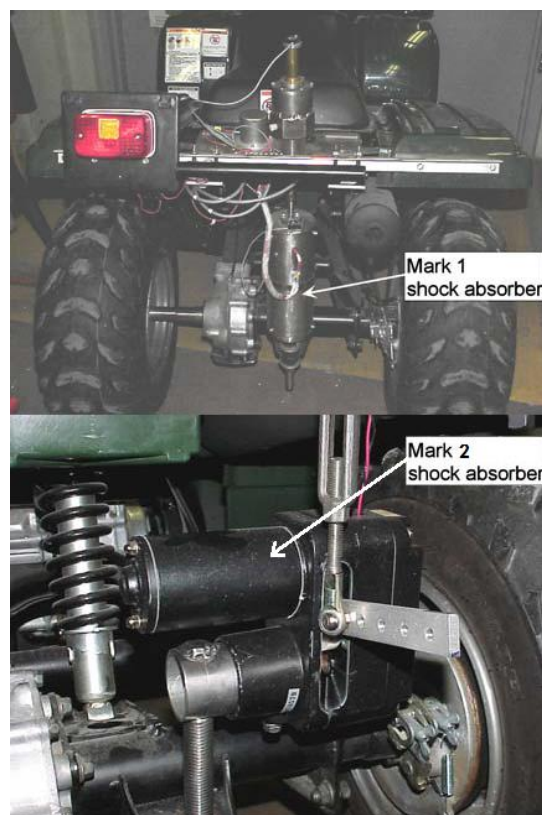
**Figure 17.** (a) Direct drive regenerative shock absorber system; (b) Indirect drive regenerative shock absorber system.

Compared with the direct drive system, the indirect drive system has the following advantages:

1. The frequency, displacement and velocity amplitudes of the input excitation can be changed through the installed mechanism to achieve better energy harvesting and vehicle dynamics
2. The increase of the input excitation speed through the speed amplifying mechanism can eliminate the need for a strong magnetic field, therefore the number of magnets can be reduced and undesired additional weight can be minimized.
3. The layout of the system is more flexible as the mechanism of the indirect drive does not have to be inside the shock absorber.

In Figure 17, another noticeable difference between these two drive modes is that the direct drive system has the AC output and the indirect drive has the DC output. As a result, the voltage output of the direct drive system needs rectification before charging the battery whereas in the indirect drive system, the unidirectional rotation of the DC motor have a constant DC output thus the rectification process is not required. Regulation or dc-dc inverter is needed for both systems to maintain a steady constant voltage for effectively charging a battery.

To compare the energy harvesting performance of the regenerative shock absorbers with different drive modes, Gupta, Jendrzejczyk [29] have both direct drive and indirect drive regenerative shock absorbers installed on an all-terrain vehicle (ATV) passing a wooden beam, shown in Figure 18. Mark 1 shock absorber is a direct drive linear electromagnetic generator with two layers of magnets and mark 2 is an indirect drive system with a lever arm that can convert the linear motion into rotary motion where the input speed is amplified 6 times. The results showed that when running over the wooden beam, direct drive system can generate 7.4 W while the indirect drive system can generate 88.8 W.



**Figure 18.** Direct drive linear regenerative shock absorber (Mark 1) and indirect drive ball screw regenerative shock absorber (Mark 2) installed on the same all-terrain vehicle (ATV) [29].

Even though the results indicated a considerable difference between the amounts of the harvested power, it cannot be concluded that the indirect drive system is more efficient than the direct drive system. In most of the papers that compare the drive modes, the generator configurations differ as the direct drive system has a linear generator and the indirect drive system has a rotary generator, hence the difference of the generator configurations results in the difference of the energy output. In addition, the damping coefficients of the regenerative shock absorbers and their effects on the vehicle dynamics should also be evaluated.

For the indirect drive system with the fluid motion rectifier, Ebrahimi, Bolandhemmat [30] believed that the fluid motion rectifier is heavy, expensive, and consumes too much energy. More disadvantages were addressed by Crolla [73] who pointed out that not only will the fluid leakages and raptures decrease the reliability, but also will they degrade the suspension performance which is limited by the narrow excitation frequency bandwidth of the hydraulic/pneumatic system. Additionally, more energy is dissipated with the increased temperature of the fluid.

Ultimately, considering the difference of the transducers of the different drive modes, it is suggested in future studies to use the same generator constant or electromechanical coupling constant so that the energy generating ability and the motor resistance force can be compared.

## 5. Hybrid System and Its Technologies

In addition to the direct drive system and indirect drive system, many innovations have been proposed to combine the multiple drive modes together for improving both the reliability and damping performance.

As shown in Figure 19, Singh and Satpute [81,82] proposed a dual cylinder system where the main cylinder works as a shock absorber dampening the vibration through the vehicle suspension and also providing the drive to the secondary cylinder for the velocity amplification. When the secondary cylinder fails, the main cylinder will continue to operate as a passive damper. Considerable amount of energy can be generated without compromising the ride comfort and the road handling performance.

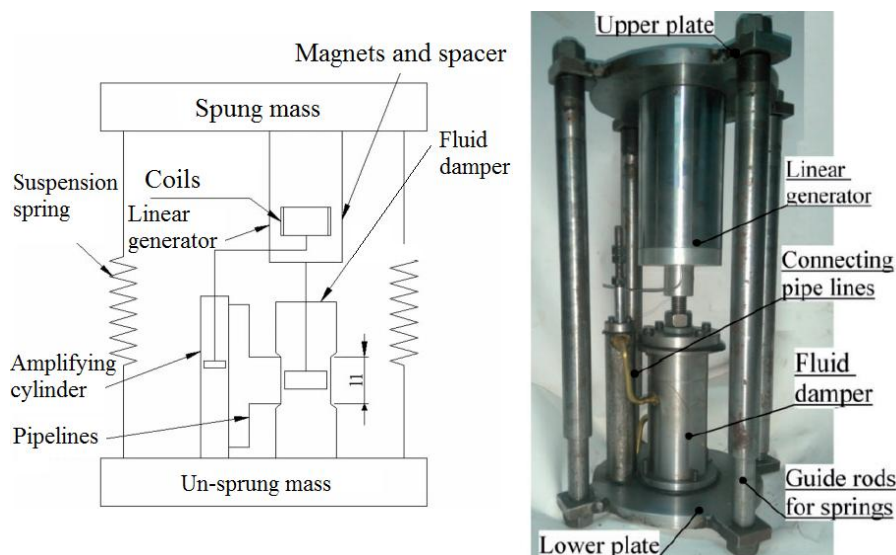
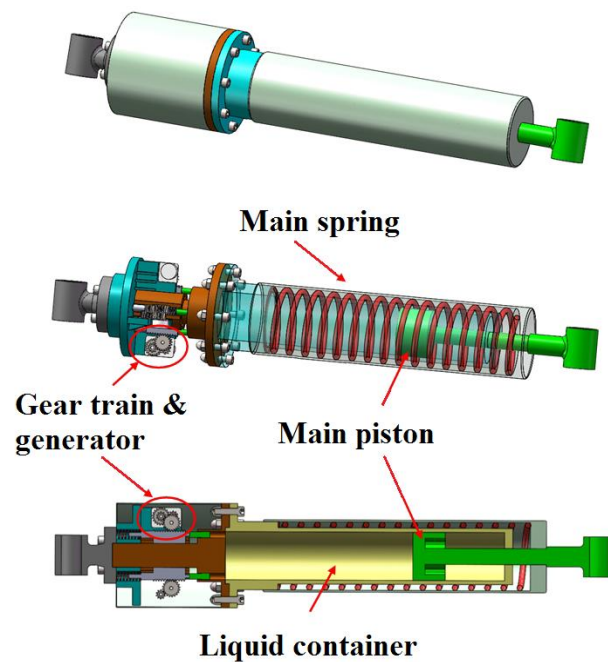


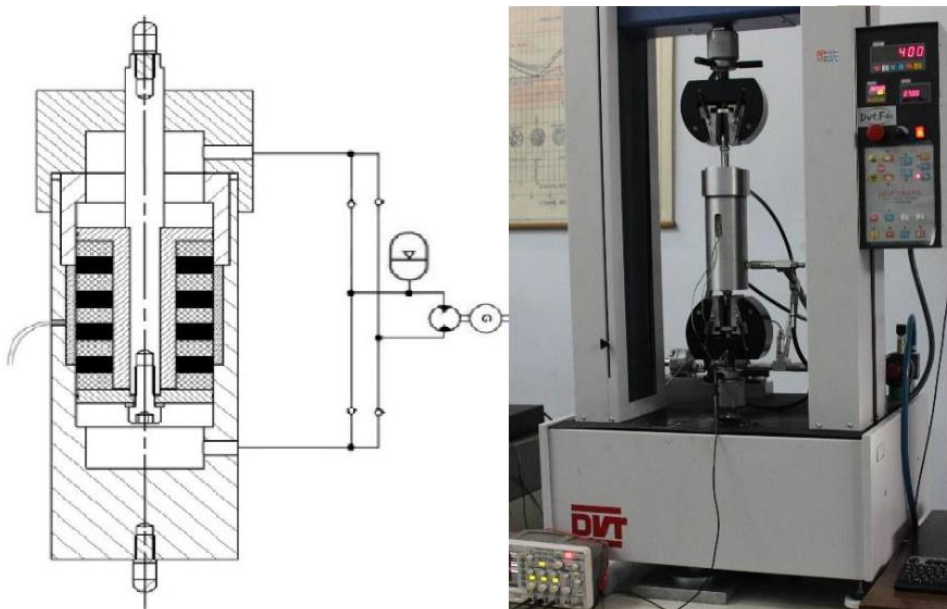
Figure 19. Hybrid dual cylinder regenerative suspension system and its prototype [82].

A more complex design was proposed by Xie, Li [51] shown in Figure 20. The secondary piston driven by the main viscous piston has the rack and pinion mechanism. The DC generator is attached at the bottom of the secondary piston to harvest energy. This layout improves the system reliability with the fail-safe mode.



**Figure 20.** The conceptual design of a hybrid regenerative shock absorber [51].

To further reduce the amount of dissipated energy due to the viscosity of the piston liquid, as shown in Figure 21, Demetgul and Guney [83] developed a hydraulic regenerative shock absorber that scavenges energy from both hydraulic fluid motion and shock body motion. Both the power generated from the hydraulic piston generator and the linear generator can be used to charge the energy storing devices.



**Figure 21.** The cross-section of the hybrid regenerative shock absorber and its experimental setup [83].

Although most of the hybrid systems have the failsafe mode, the main drawback of the hybrid systems is the low reliability brought by the complexity of the design that can potentially increase the chance of failure. A large number of components can also dissipate additional amount of energy,

resulting in lower power output in comparison with the direct drive system and indirect drive system. In addition, the space constraint of the shock absorber makes the hybrid system less plausible. The hybrid systems are summarized in Table 4 below.

**Table 4.** Summary of the hybrid system.

Presenter	Mechanism	Voltage Output (V)	Power Output(W)	Vehicle (km/h) or Excitation Frequency (Hz)	Efficiency
Singh and Satpute [81]	Hydraulic piston with linear electromagnetic generator	N/A	15 W	35 km/h on class C road	13%
Xie, Li [51]	Secondary piston with rack and pinion to drive the rotary generator	N/A	130 W (simulated)	120 km/h on class C road	N/A
Demetgul and Guney [83]	Combined linear electromagnetic generator and hydraulic rotary generator	6 V	0.003 W for electromagnetic generator, 0.56 W for hydraulic generator	15 mm at 0.005 m/s	N/A

## 6. Damping and Vehicle Dynamic Performance

Traditional shock absorbers utilize the viscosity of the fluid inside the cylinder to dampen the vehicle suspension vibration, and the damping coefficient of the shock absorber can be changed by tuning the size of the orifice. Whereas in the regenerative shock absorber where the kinetic energy is converted into electrical energy, the damping effect is entirely or partially contributed by the energy harvesting devices such as a generator.

### 6.1. Damping Performance of the Direct Drive System

The damping coefficient of a passenger vehicle quarter suspension is approximately 1500 Ns/m [84] and 8000–10,000 Ns/m for heavy duty vehicles [85]. According to Yan and Sun [86], equivalent damping coefficient of the electromagnetic generator in the regenerative shock absorber can be expressed by Equation (2) if the damping performance is entirely provided by the electromagnetic generator.

$$c_{eq} = \frac{k_i^2}{R} \quad (2)$$

where  $k_i$  is the product of the magnetic field intensity and coil length;  $R$  is the total electrical resistance. Therefore, for a regenerative shock absorber with a damping coefficient of 1500 Ns/m on a passenger vehicle suspension and a 10  $\Omega$  electrical resistance, the electromagnetic coupling coefficient is calculated by Equation (2) and given by  $k_i = 122.5$  Tm which is a large value, meaning that it can only be realized using multiple strong magnet arrays and a coil that has sufficient length. The packaging space of a shock absorber is limited, thus making it difficult to provide enough damping performance with only a direct drive system.

In order to meet the damping requirement of the shock absorber for vehicle dynamics, many innovations have been proposed with an additional damper in parallel with the direct drive energy harvester. Asadi, Ribeiro [45] proposed to have a viscous damper and a direct drive linear motor fused together, shown in Figure 22. This design enables the regenerative shock absorber to have additional damping performance provided by a hydraulic piston. Experimental results showed that a damping coefficient of 1302–1520 Ns/m can be obtained for the regenerative shock absorber.

To further improve the damping performance of the shock absorber, Magnetorheological (MR) fluids are applied to achieve variable damping control. Chen and Liao [24] developed a parallel damper consisting of MR damper and electromagnetic generator, shown in Figure 23. The generated power can then be utilized as the power supply for the MR current driver and sensors. A damping force of 700 N can be achieved under 11mm excitation at 1Hz and simultaneously a maximum of 2 V can be harvested. Damping force control algorithm can also be integrated in the MR energy harvesting damper for optimum vibration control [43,46].

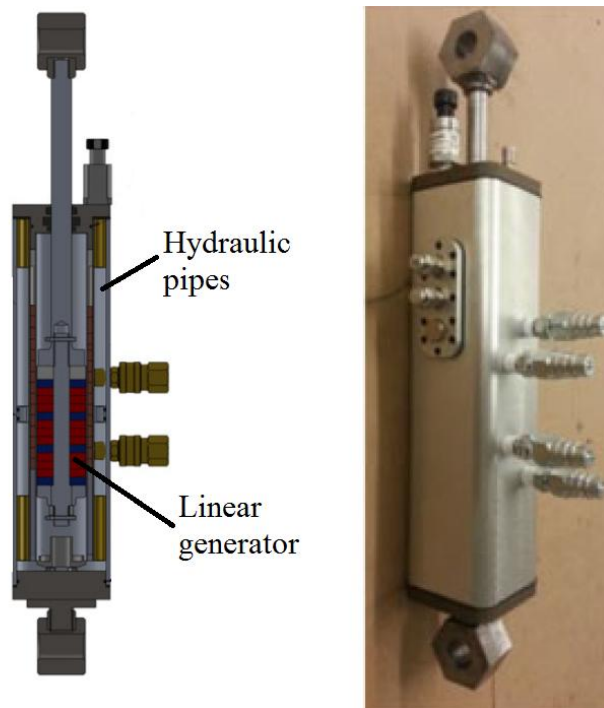


Figure 22. A parallel hydraulic electromagnetic damper.

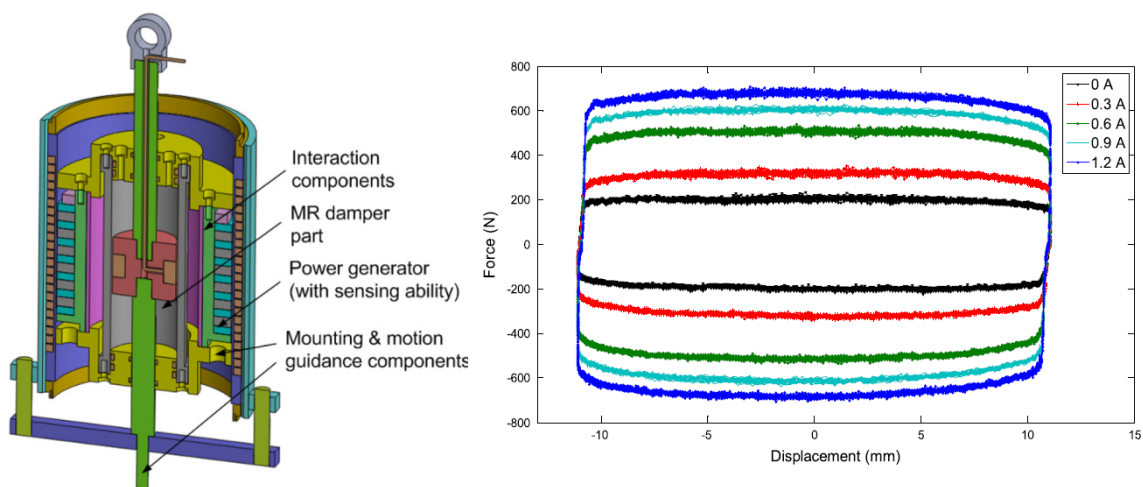


Figure 23. The cross section of the Magneto-rheological regenerative damper and its damping force against the displacement for applied currents.

### 6.2. Damping Performance of the Indirect Drive Systems

For the indirect drive systems, because of the presence of the speed amplifying mechanism, the back electromagnetic force of the generator can be amplified to obtain larger damping. However, one common problem exists in most of the indirect drive systems incorporated with a motion rectifier. During half the time of the conversion from the bidirectional motion of shock body to the unidirectional rotation of the generator, the mechanism becomes disengaged and the generator continues to rotate due to inertia, resulting in the absence of the damping force in half of the motion cycle. The indirect drive systems equipped with one overrunning clutch or one-way bearing tend to present such problem, as shown in [55,57,76,79].

To obtain the stable damping force throughout the entire motion cycle, the designs are upgraded with two clutch systems [47,49,59]. These two clutches are installed facing each other on the drive shaft and both connected with same output shaft. Therefore, when the drive shaft rotates in two directions, one of the clutches will always remain engaged, as shown in Figure 24.

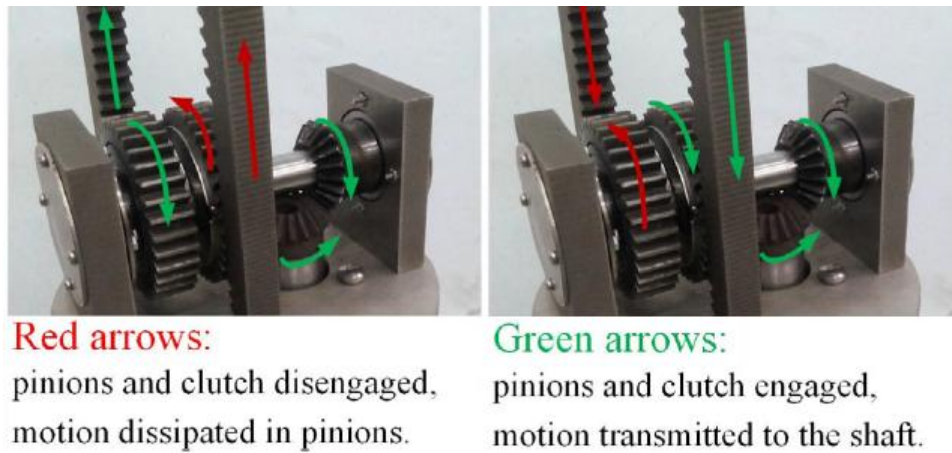


Figure 24. Continuous damping provided by the dual clutches system [49].

According to Zhang, Zhang [49], the damping force measured experimentally is shown in Figure 25, it can be seen that the damping force applies for both compression and recoil phase of the shock absorber with higher frequencies yielding higher damping force.

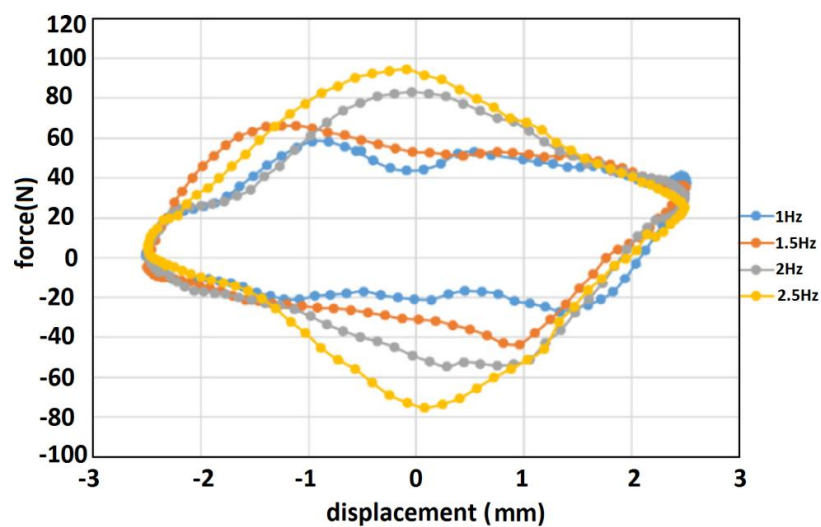


Figure 25. Damping force versus shock absorber displacement for different excitation frequencies.

In the hydraulic indirect drive systems, the damping force can also apply throughout the whole motion cycle shown in Figure 26, as a result of having flow resistance in both directions. Comparing the direct drive with the indirect drive system, the latter has a larger damping coefficient than the former as long as the damping is presented throughout the entire motion cycle. This damping effect is caused by the friction loss of the speed amplifying mechanism and energy loss of the complex mechanism operation. Therefore, a trade-off between the vibration control and energy harvesting need to be reached through a control algorithm. The damping coefficient and force results of the regenerative shock absorbers are compared and listed in Table 5 below.

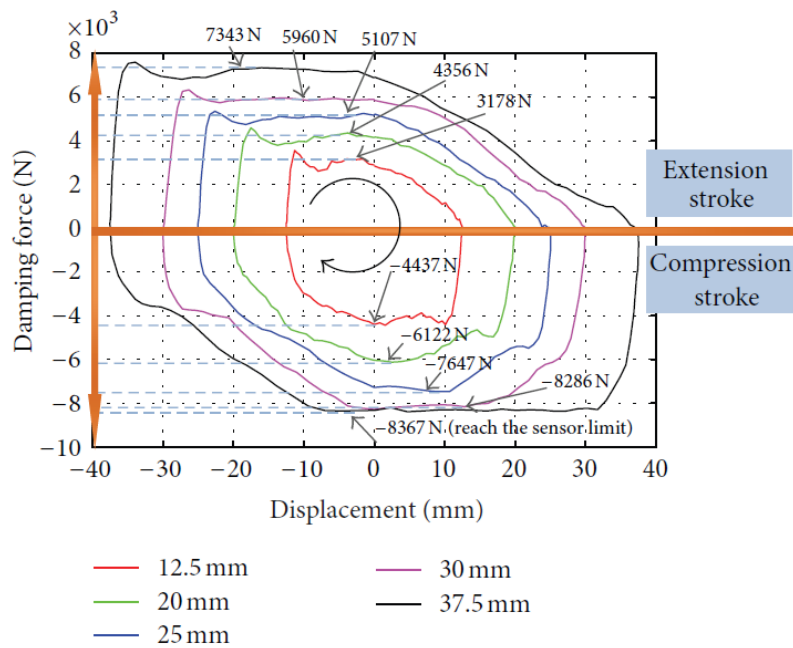


Figure 26. Damping force displacement loops of the regenerative shock absorber [67].

Table 5. The summary of the damping performance of the regenerative shock absorbers.

Presenter	Mechanism	Damping Coefficient	Maximum Damping Force
Direct drive system			
Sapiński, Rosół [43]	Electromagnetic system	N/A	520 N
Tang, Lin [31]	Electromagnetic system	940 Ns/m	N/A
Wang, Ding [44]	Electromagnetic system	1320 Nm/s	N/A
Asadi, Ribeiro [45]	Electromagnetic system	1302–1540 Ns/m	N/A
Chen and Liao [24]	Combination of MR damper and electromagnetic system	N/A	700 N
Sapiński, Rosół [43]	Combination of MR damper and electromagnetic system	N/A	520 N
Indirect drive system			
Li and Zuo [48]	Rack and pinion	1425 Ns/m	N/A
Gupta, Jendrzejczyk [29]	Rack and pinion	38.5 Ns/m	N/A
Nakano [76]	Ball-screw	7200 Ns/m	N/A
Fang, Guo [67]	Hydraulic system with 4 check valves for rectification	N/A	7343 N
Choi, Seong [77]	Rack and pinion	N/A	700 N
Zhang, Zhang [49]	Rack and pinion, two overrunning clutches	1637.2 Ns/m	N/A
Chu, Zou [78]	Rod and helical slot	N/A	600 N
Wang, Gu [68]	Hydraulic system	N/A	10,000 N
Sabzehgar, Maravandi [79]	Algebraic screw	237 Ns/m	N/A
Liu, Xu [59]	Ball screw with two one way clutches	15,420 Ns/m	N/A
Zhang, Zhang [80]	DC generator connected to the hydraulic actuator	N/A	1450 N
Hybrid system			
Singh and Satpute [81]	Hydraulic piston with linear electromagnetic generator	1898 Ns/m	N/A

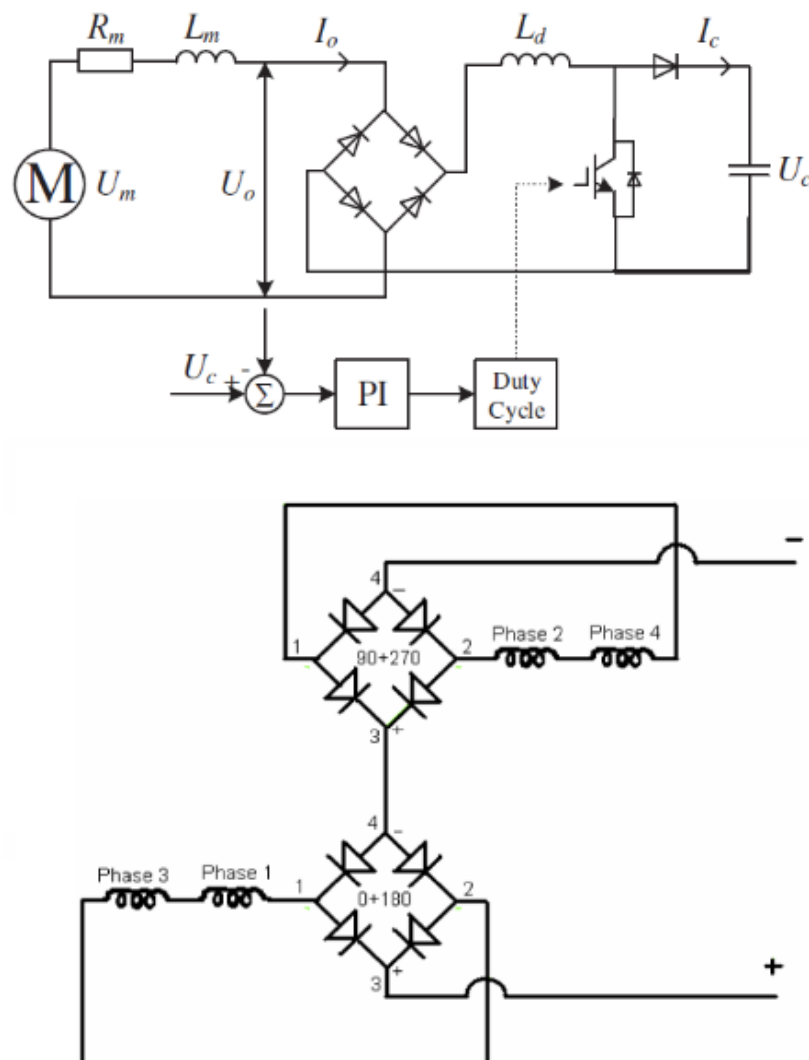


### 7. Circuit and Control Algorithms for Enhancing Power Output and Vehicle Dynamics

The regenerative shock absorber system can generate power for electrical applications. Due to the difference in the power requirement between the power generating element and the power receiving element, the regulation and rectification are essential for the electrical circuits of energy harvesting and storage. In addition, the control parameters may influence the dynamic performance of the vehicle suspension system and energy dissipation performance [87]. Therefore control algorithms need to be incorporated to improve vehicle dynamics and/or the energy harvesting ability by adjusting the parameters according to the input excitation levels [88].

#### 7.1. Power Maximization

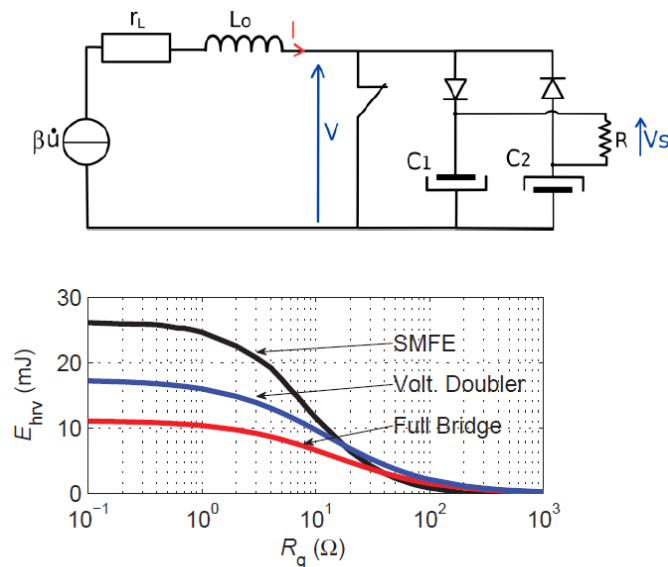
Because the direct drive system has AC output and the indirect drive system has DC output, to obtain the steady DC current for charging battery, many direct drive systems incorporated the rectification bridges [2,44,89], as shown in Figure 27.



**Figure 27.** Single bridge rectifier with Proportional-Integral controller (PI) (top) [44]; two bridge rectifiers in series (bottom) [2].

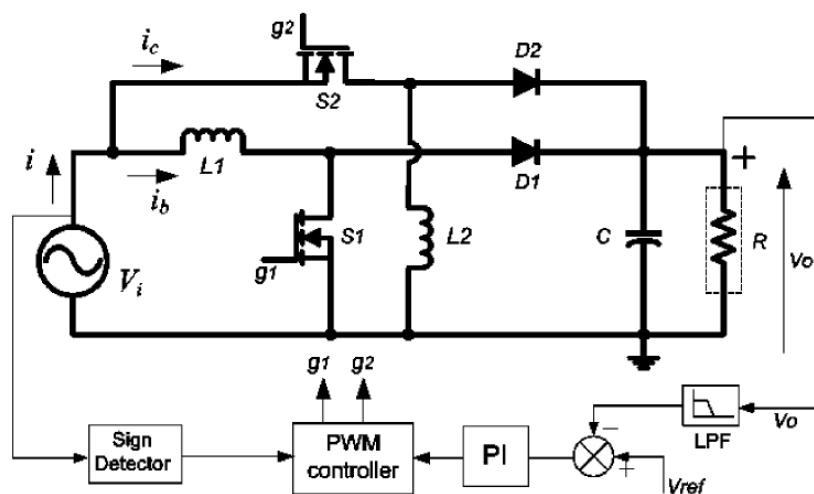
A drawback of this layout is that a full wave rectified output is a pulsed DC and it is advisable to add a reservoir capacitor for smoothing out the variations. An excessive number of diodes would also consume electrical energy. Arroyo, Badel [90] proposed the Synchronous Magnetic Flux Extraction

(SMFE) circuits with only two diodes, shown in Figure 28 Top. The SMFE circuit is suitable for electromagnetic vibrational energy harvesting.



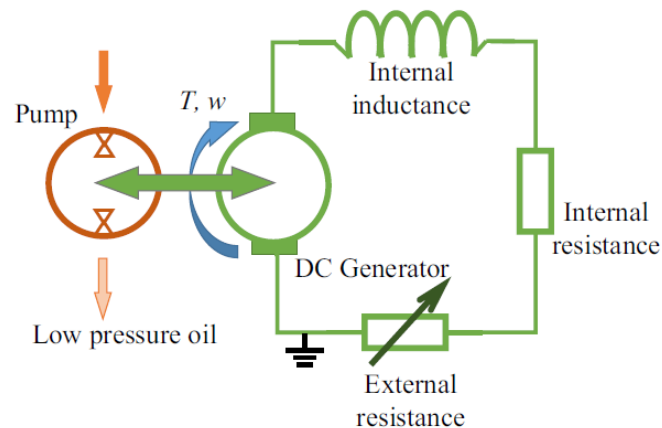
**Figure 28.** The Synchronous Magnetic Flux Extraction (SMFE) circuit (top) [90] and energy extraction for different circuits (bottom) [91].

Based on the research conducted by Sanchez, Jodka [91] shown in Figure 28 Bottom, with the same generator resistance, the SMFE method can extract higher amount of energy than that with a voltage doubler circuit or full bridge rectifier. Another advantage brought by using the SMFE other than simply using shunt resistance is that it also incorporates the rectification and amplification of the voltage, thus increasing the efficiency of the electromagnetic energy harvester [92]. For the similar purpose, Dwari and Parsa [93] proposed an alternating current to direct current (AC-DC) step-up converter that can be applied on regenerative shock absorber to charge the battery, as shown in Figure 29. It consists of a boost and buck boost converter connected in parallel and achieves an efficiency of 61% which is better than that by using a conventional bridge rectifier.



**Figure 29.** Direct alternating current to direct current (AC-DC) step-up converter [93].

For the indirect drive system, due to the motion rectifier, the bidirectional to unidirectional conversion of output voltage is no longer necessary. In many designs [80,83,94], the DC generator is characterized by an internal inductance and a resistance, and is connected to a single external resistance over which the power can be extracted, as shown in Figure 30. However, under the random road excitations, in order to charge the energy storing devices, a regulator needs to be included in the circuit as the generator voltage output needs to be regulated to steadily stay at a certain voltage level. Therefore, many efficient DC-DC converters are proposed in accordance with the targeted output ranges [95–97].

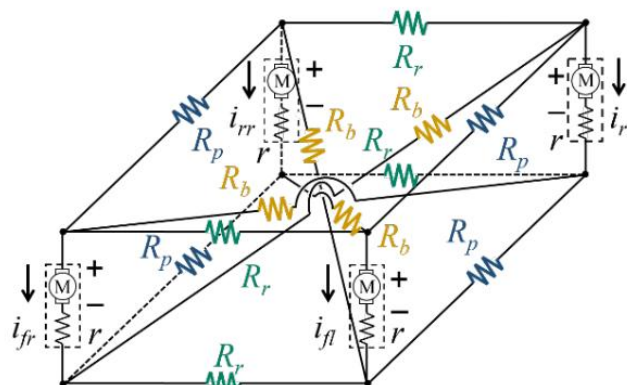


**Figure 30.** Electrical circuit of a hydraulic indirect drive regenerative shock absorber [80].

## 7.2. Vehicle Dynamic Control

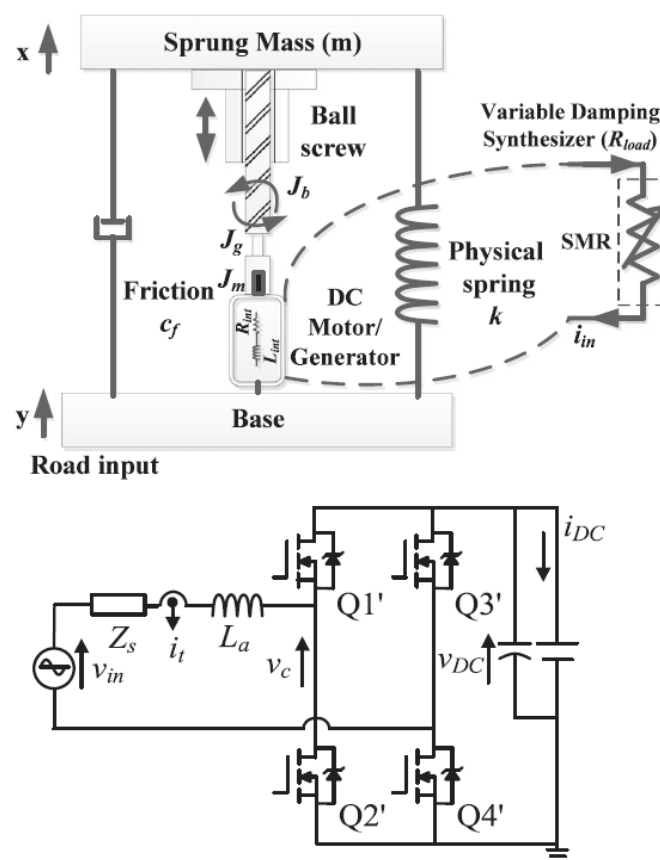
In addition to energy harvesting, most regenerative shock absorber systems operate inversely as a part of the active suspension system or semi-active suspension system when the external power is applied [98]. Many studies have been done on how to improve vehicle dynamics with the electromagnetic shock absorber [3,6–9,99–102].

Fukumori, Hayashi [52,103] conducted the experiments using coupled electromagnetic dampers dampers that can tune the bouncing and rolling modal frequencies of the vehicle independently through a variable external resistor, the schematic of which is shown in Figure 31. However, the voice coil motor was used in the experiment instead of the originally proposed ball-screw regenerative shock absorber system, therefore the energy harvesting performance was not able to be evaluated under the condition where the ride comfort was optimized.



**Figure 31.** Independent tuneable electromagnetic damper system [103].

Skyhook control strategy assumes that there is a dashpot of damping  $C_{sky}$  on the top of the sprung mass to dampen the vehicle body vibration from the road unevenness excitation [104]. Choi, Seong [77] designed a suspension system based on the electrorheological fluid damper with skyhook controller, the model of which is simulated to compare its simulation results with the experimental results in terms of attenuating vibration. It was found that the skyhook controller powered by the regenerative shock absorber system can significantly reduce the vibration. Ding, Wang [89] implemented Skyhook controller in the active control mode for vibration isolation. Hsieh, Huang [105] proposed the concept where a switched-mode rectifier (SMR) was used to provide positive or negative damping by implementing a skyhook control strategy, as shown in Figure 32. The results showed that the SMR can provide electrical damping based on the skyhook response outcome to achieve the balance between the passive control and the active control. His later research also indicated that the SMR can improve the harvesting efficiency for up to 14% [106].



**Figure 32.** Regenerative suspension dynamic model and configuration of switched-mode rectifier (SMR).

### 7.3. Balance between the Energy Harvesting and Vehicle Dynamic Performance

Due to the contradiction between the energy harvesting and ride comfort, compromises have been made for the balance of the ride comfort, road holding and power generation. Ataei, Asadi [107] provide all the possible solutions as Pareto front by prioritizing one of the three objectives. It is shown that the optimized system can deliver better comfort and handling than the non-optimized system. Similar method was adopted by Clemen, Anubi [108] for obtaining the best trade-off between the objectives. For the same purpose of finding the best trade-off between vehicle dynamic performance and energy harvesting, Casavola, Di Iorio [109] proposed the maximum induced power control (MIPC) algorithm that can improve the energy harvesting ability without sacrificing the other objectives.

The concept of mode switching was also introduced to harvest the energy without compromising the ride and comfort performance. Zheng, Yu [53] proposed a system featuring the mode switching operation, namely, the electric motor mode and regenerative braking mode. In the electric motor mode, the optimal ride and comfort performance can be achieved through the active control by tuning the external circuit; in regenerative braking mode, the system can harvest energy while improving the ride and comfort performance. This operation can be achieved through the H bridge switching between the regeneration/actuation mode, one example of the operation is shown in Figure 33 [110]. Nakano [76] and Nakano, Suda [111] proposed another mode switching system featuring regeneration mode, drive mode and brake mode, allowing the system to respond instantly to the stroke velocity, as shown in Figure 34. The possibility of powering the actuator in the motor mode utilizing the power generated in the regenerative mode was also discussed and it was concluded that this self-power operation is somewhat achievable even though the actuation force is slightly insufficient. This combination of vibration control and energy harvesting is called regenerative vibration control, which can be used in regenerative building vibration controls [112–116] and vehicle regenerative shock absorber systems [117,118]. The control algorithms are summarized in Table 6 below.

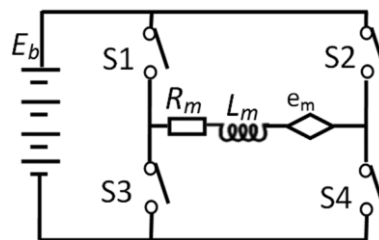


Figure 33. The H Bridge for the mode switching between regeneration and actuation.

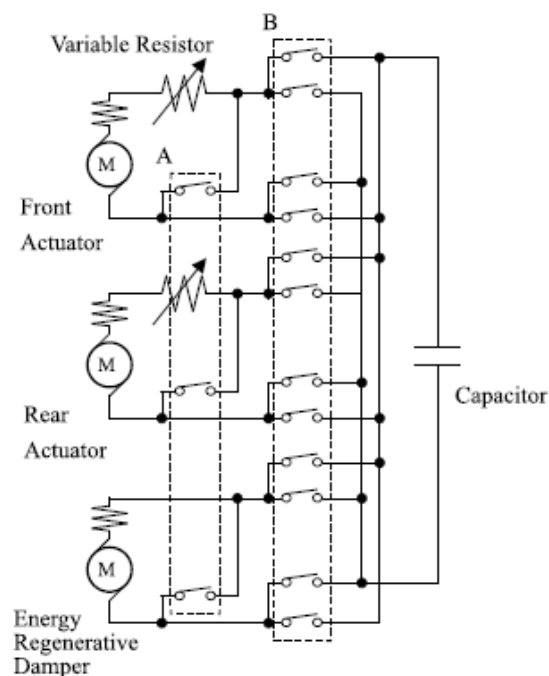


Figure 34. Control electric circuits of the proposed regenerative shock absorber system with relay switches [76].

**Table 6.** The summary of the control algorithms of the regenerative shock absorbers.

Presenter	Drive Mode	Electrical Circuit and Control Algorithm	Results
Fukumori, Hayashi [52]	Indirect drive	Independent damping control circuit	Reduced pitch angle
Yu, Huo [119]	Indirect drive	PI controller	Reduced suspension acceleration, pitch angle, normal force and increased power output
Nakano [76]	Indirect drive	Regeneration mode and drive mode	Active control and self-power
Choi, Seong [77]	Indirect drive	Skyhook controller	Reduced suspension travel and settling time
Zheng, Yu [53]	Indirect drive	Electrical motor mode and regenerative braking mode controlled by PWM	Optimum ride comfort
Kawamoto, Suda [54]	Indirect drive	PI controller	Reduced sprung mass acceleration and tire deflection
Wang, Ding [44]	Direct drive	active comfort mode, active safety mode and regeneration mode, PI controller	Reduced cabin acceleration and dynamic tire load in active mode
Singh and Satpute [81]	Hybrid	Harvesting mode and shunt mode controlled by two switches and a resistance	Energy can be either harvested or dissipated as heat
Huang, Hsieh [120]	Indirect drive	Switch-mode rectifier	Tuneable damping coefficient
Zhang, Li [104]	Indirect drive	Skyhook controller	Reduced sprung mass acceleration, suspension deflection and tire dynamic
Sapiński, Rosół [43]	Direct drive	On-off algorithm or skyhook controller	Less force and less transmissibility obtained with skyhook controller than with on-off algorithm
Liu, Li [98]	Direct drive	Fuzzy control	Reduced amplitude of suspension dynamic flexibility, tire dynamic displacement
Ding, Wang [89]	Direct drive	Passive generation mode, active control mode with skyhook controller	Better vibration isolation in the active control mode
Sabzehgar, Maravandi [79]	Indirect drive	PWM control	Conversion of three phase power output for charging the battery

## 8. Road Excitation Input

In order to evaluate the regenerative shock absorber, a certain road excitation input needs to be applied so that the output response of the system can be analyzed. Sinusoidal signal, step signal and random signal have been utilized by many researchers to simulate the road displacement excitation input.

### 8.1. Sinusoidal Displacement Excitation Input

Sinusoidal displacement excitation input has been widely applied to simulate the excitation input because it presents a certain excitation frequency. For a linear regenerative suspension system, its natural resonant frequencies can be targeted to maximize power output and the harvesting efficiency. According to Wang, Liang [121], given the input excitation frequency, the power input and output can be calculated to give system energy harvesting efficiency. With the sinusoidal road displacement excitation input, the voltage output appears to be sinusoidal, which can be rectified into DC voltage.

### 8.2. Step Input

The use of a step signal as the road displacement excitation input can evaluate the regenerative shock absorber's vibration response time and attenuation ability, thus giving the idea of how the vehicle responds to a single road bump. In their paper, Li and Zuo [122] compared the vehicle responses to a 10 mm step road displacement excitation for the vehicle suspension fitted with three regenerative shock absorbers in terms of weighted acceleration, dynamic/static tire force ratio, suspension deflection, harvested power and damping force.

### 8.3. Road Displacement Profile

In addition to the sinusoidal and step input, the road class model has also been applied to the regenerative shock absorber based on its roughness classification since the road roughness has a significant impact on the power dissipated in the shock absorber [123]. Goldner, Zerigian [42] included the road profile in the experiment by using a rotating wheel with a bump. However, this setup cannot fully resemble the real road condition which has a more random displacement profile. In order to evaluate the performance of the regenerative shock absorber on different road conditions, the road model and its classification were introduced to conduct the simulation accurately. According to ISO-8608, A to H are used to classify the roads [124]. Many authors have incorporated road models with the classifications in the simulation as the input excitation [50,120,125,126].

The power spectral density (PSD) functions of the road displacement input are given by:

$$\begin{cases} G_d(n) = G_d(n_0) \cdot \left(\frac{n}{n_0}\right)^{-2} \\ G_d(\Omega) = G_d(\Omega_0) \cdot \left(\frac{\Omega}{\Omega_0}\right)^{-2} \end{cases} \quad (3)$$

where  $G_d(n)$  and  $G_d(\Omega)$  are the PSD functions of the vertical displacements which are functions of spatial frequency  $n$  and of angular spatial frequency  $\Omega$ .  $G_d(n_0)$  and  $G_d(\Omega_0)$  are given in Table 7 below corresponding to the road classifications.

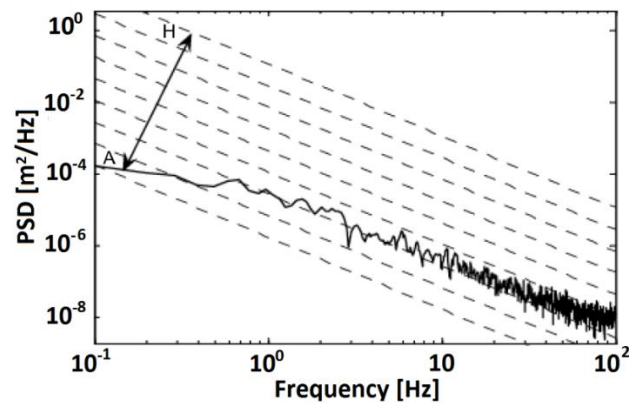
**Table 7.** ISO 8608 values of  $G_d(n_0)$  and  $G_d(\Omega_0)$  [125].

Road Class	$G_d(n_0)$ ( $10^{-6} \text{ m}^3$ )		$G_d(\Omega_0)$ ( $10^{-6} \text{ m}^3$ )	
	Lower Limit	Upper Limit	Lower Limit	Upper Limit
A	—	32	—	2
B	32	128	2	8
C	128	512	8	32
D	512	2048	32	128
E	2048	8192	128	512
F	8192	32,768	512	2048
G	32,768	131,072	2048	8192
H	131,072	—	8192	—
	$n_0 = 0.1 \text{ cycles/m}$		$\Omega_0 = 1 \text{ rad/m}$	

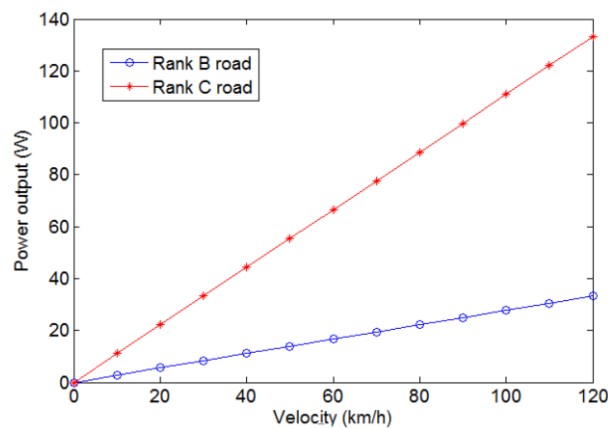
Kawamoto, Suda [54] developed the PSD of the road elevation profile shown in Figure 35. The road profile equivalent to level C was generated with random roughness and used in the simulation as an input source. The PSD functions of the bounce and pitch road displacement input profiles were developed by Nakano [76], taking into consideration of the time delay between the wheels due to the vehicle travelling, as shown below:

$$\begin{cases} P_{0b}(f_t) = \frac{vR}{f_t^2} \cos^2\left(\frac{f_t}{v} \pi (l_f + l_r)\right) \\ P_{0p}(f_t) = \frac{4vR}{(l_f + l_r)^2 f_t^2} \sin^2\left(\frac{f_t}{v} \pi (l_f + l_r)\right) \end{cases} \quad (4)$$

Xie, Li [51] compared the output power of the regenerative shock absorber under the different road classes, shown in the Figure 36. The result showed that the more pronounced the road roughness is, the more the power output at certain vehicle velocities.



**Figure 35.** Power spectral density (PSD) of input displacement excitation profile of the C level road on which the vehicle is travelling at 80 km/h.



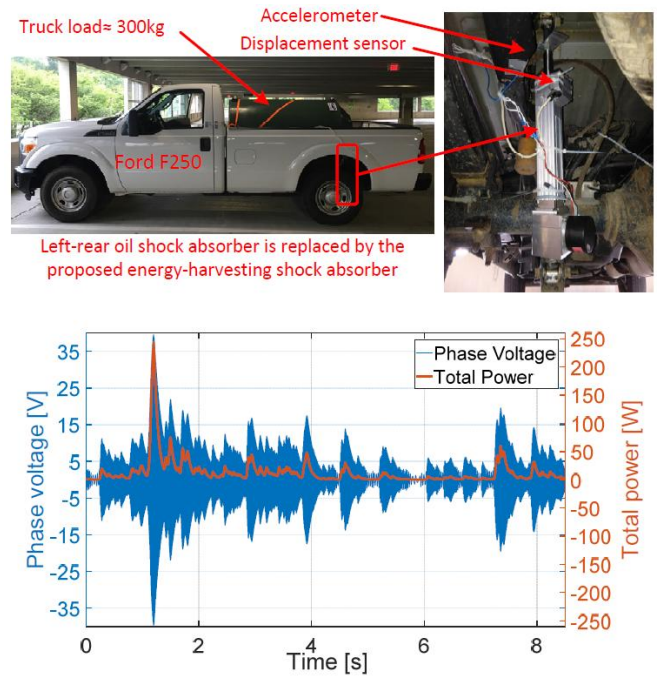
**Figure 36.** The output power versus road class and vehicle velocity [51].

#### 8.4. Road Test

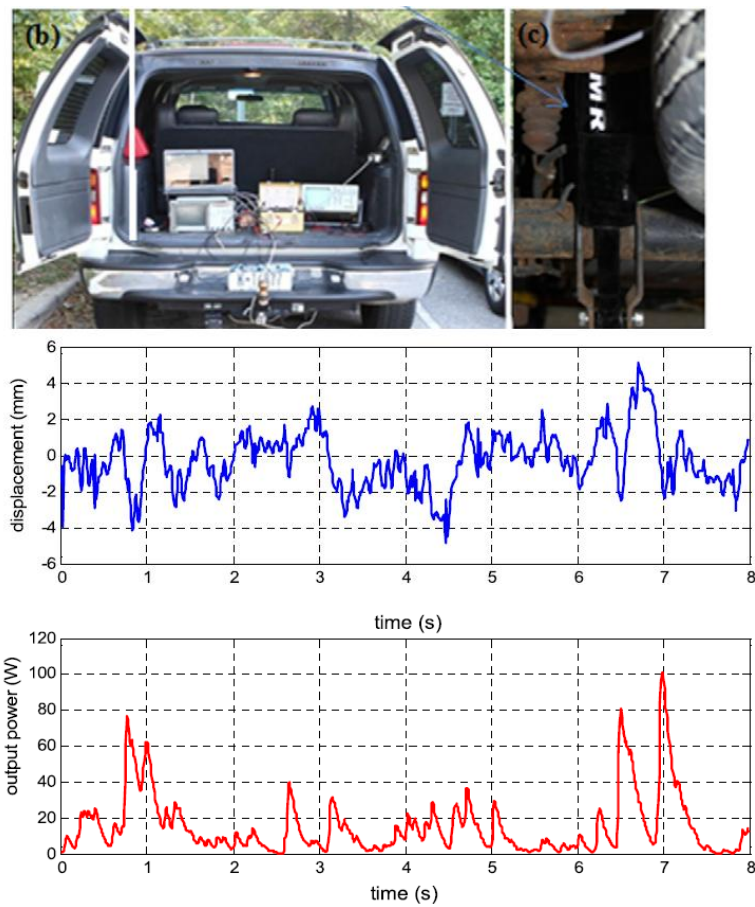
Road test is the most straightforward and simplest way to demonstrate the performance of the shock absorber in the real world. The accelerometers were mounted on the sprung mass and unsprung to pick up the acceleration signals and data acquisition device was placed in the vehicle cabin to record the test data. A double clutch ball screw based regenerative shock absorber designed by Liu, Xu [59] was tested on a Ford F250 in place of the traditional oil damper, as shown in Figure 37. The vehicle was driven at 64 km/h on the paved road, it is shown that with a  $10 \Omega$  external resistance, the total power output was in phase with the voltage output and an average of 13.3 W could be harvested over 8 s. As shown in Figure 38, a similar test was conducted by Li, Zuo [127] to assess the feasibility of the proposed regenerative shock absorber, an average of 15.4 W could be harvested over 8 s with a  $20 \Omega$  external resistance, when the vehicle was driven at 24 km/h on a circled campus road. It is also indicated that the power output was out of phase with the road displacement, which means that in addition to the excitation displacement amplitude, the excitation displacement phase could also affect the power output.

In order to evaluate the results in the frequency domain, Liu, Li [98] proposed to have the regenerative shock absorber installed on a self-made electric vehicle driven at 20 km/h on a Class B road, as shown in Figure 39. In the road test, the comfort levels of the passive damper and the proposed regenerative damper with the Variable Universe Fuzzy (VUF) control were compared and the results are shown in the frequency domain. It can be seen that the VUF control lowered the vehicle body acceleration and such reduction was more obvious at the resonant frequencies.

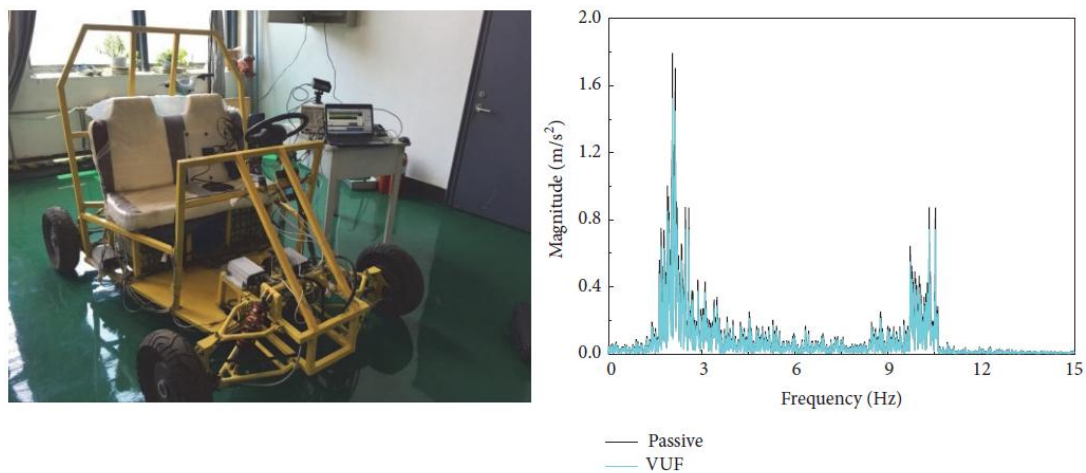




**Figure 37.** Road test of the ball-screw-based mechanical motion rectifier (MMR) shock absorber and its electrical outputs.



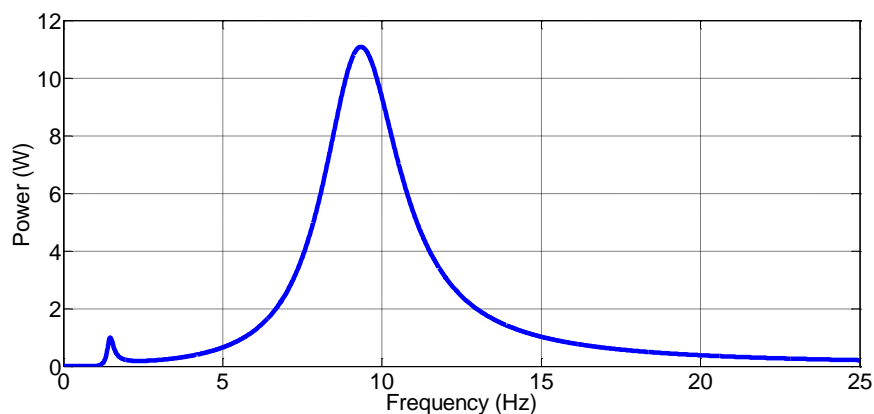
**Figure 38.** The road test of MMR shock absorber and recorded displacement and power output.



**Figure 39.** Road test set up of an active energy-regenerative suspension (AERS) and its body acceleration in the frequency domain at 20 km/h on Class B road.

## 9. Nonlinearity

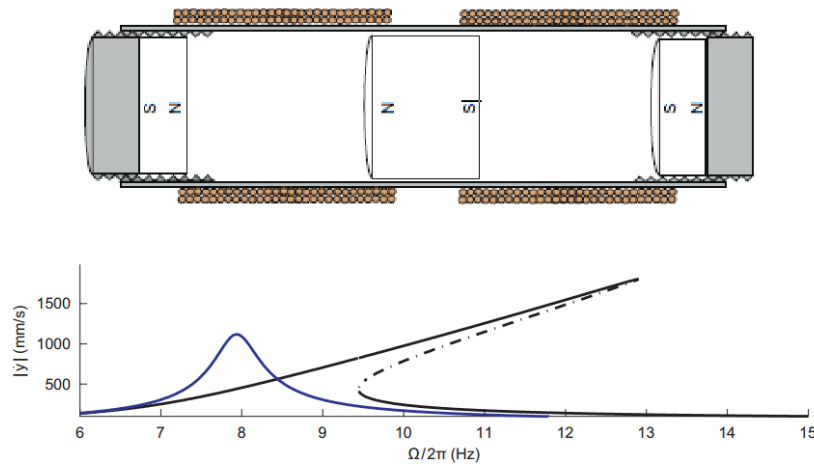
Due to the nature of the linear regenerative vehicle suspension, more energy can be harvested at the resonant natural frequencies. Figure 40 is an example of the frequency spectrum of the power generation in a quarter vehicle regenerative suspension system [128]. One of the drawbacks of the linear regenerative vehicle suspension is that the resonant peak frequency bandwidth is really narrow, resulting in very little energy that can be regenerated [129]. The use of nonlinear spring can broaden the energy harvesting bandwidth or shift the modal resonant frequency to achieve higher power, which is especially suited for energy harvesting from random vibration [130]. For these purposes, many researchers have studied nonlinear system model that can be adopted for the regenerative vehicle suspension system [131–135].



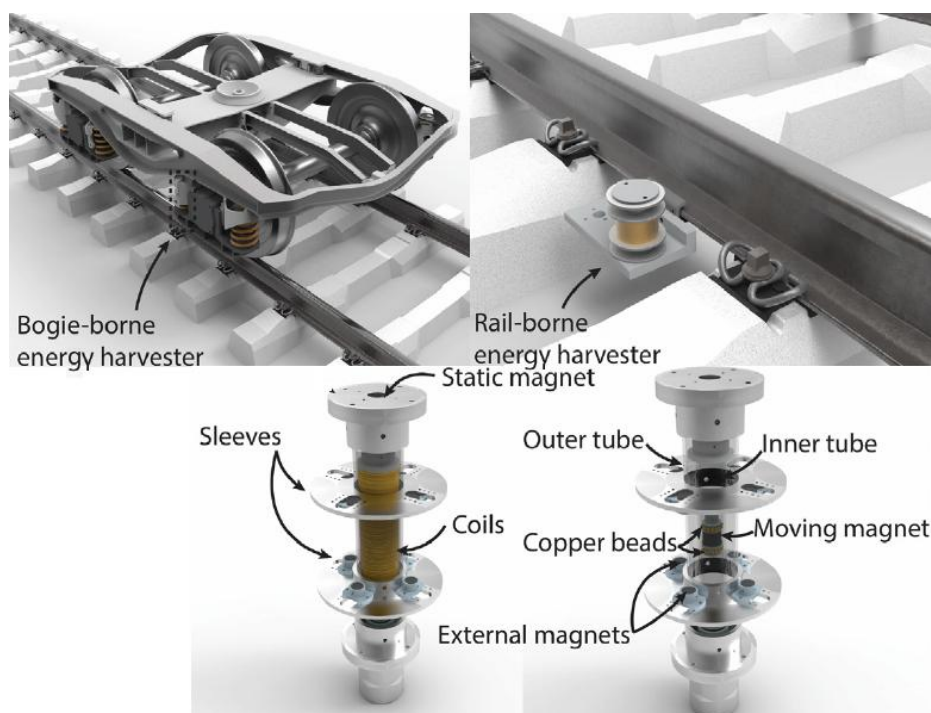
**Figure 40.** Frequency spectrum of the power generation in a quarter vehicle regenerative suspension system.

A magnetic levitation energy harvesting device was proposed by Mann and Sims [136] and shown in Figure 41. The mathematical model could be obtained using the Duffing equation and it was found that the nonlinearity was applicable to larger excitation displacement amplitude, resulting in a broader harvesting frequency bandwidth. The peak power could be obtained away from the equivalent resonant frequencies. Gao, Wang [137] proposed the similar magnetic levitation system for harvesting energy from rail and bogie as shown in Figure 42. Another interesting innovation was brought by Barton, Burrow [129] who further increased the bandwidth by changing the load resistance.

It was also discovered that the nonlinearity presents super-harmonic resonances well above the natural frequencies of the equivalent linear system, allowing the system to respond at a frequency higher than the excitation frequency. This up-frequency conversion could be useful for the low frequency operation such as a vehicle suspension system.

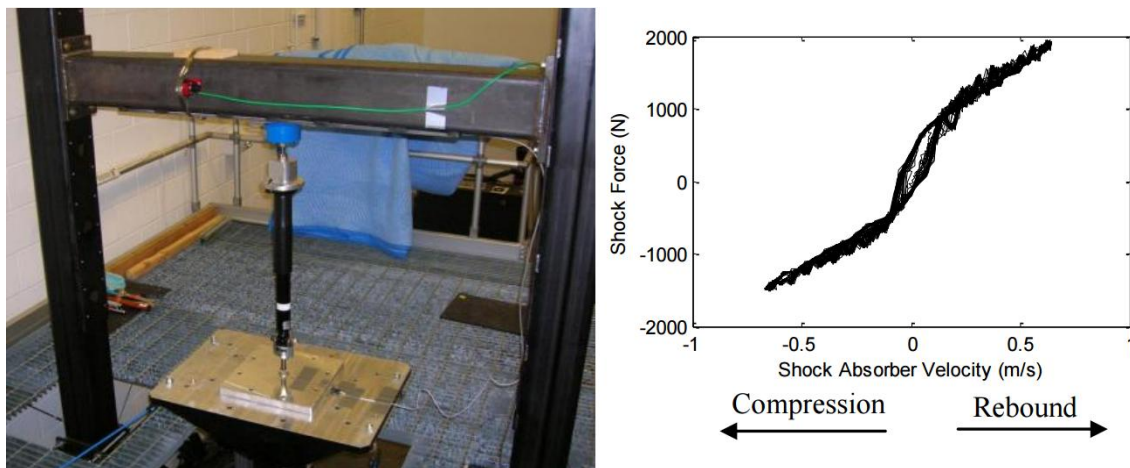


**Figure 41.** Nonlinear magnetic levitation energy harvesting system and its frequency spectrum of oscillator velocity.



**Figure 42.** Illustration of a multi-stable magnetic levitation energy harvester applied on rail and bogie.

There have been a number of suspension system designs that incorporate the nonlinearity model due to its advantages in prediction of vehicle dynamics. Özcan, Sönmez [138] evaluated the nonlinear spring and nonlinear damper in the half car system to optimize the comfort and the handling of the light vehicle. Similar dynamic study was conducted by Cui, Kurfess [139] on the shock absorber in a Mazda CX-7, the test result clearly showed that the nonlinearity was involved in the operation shown in Figure 43. The stability and comfort of the vehicle could be improved by this nonlinearity.



**Figure 43.** Experimental setup of the Mazda CX-7 nonlinear shock absorber and its force velocity curve.

Although the concept of the nonlinearity model has been largely applied on the vehicles to predict vehicle vibration response due to the road profile excitation, there have not been many investigations undertaken for the nonlinear model of the vehicle suspension system built with the regenerative shock absorber in terms of harvesting energy, which can be identified as a research gap and should draw more attention considering the potentials of the regenerative shock absorber and its readiness to be implemented. The potential advantages of the nonlinear regenerative shock absorbers are:

1. Widening the frequency bandwidth for harvesting more energy on the random road surface.
2. Shifting the harvesting frequency away from the vehicle equivalent resonant frequency for better reliability.
3. Converting the low road excitation frequency into high energy harvesting frequency.
4. Better ride comfort and road handling.

## 10. Future Direction for Regenerative Shock Absorbers

The rapid developments of the new technologies have improved the feasibility of the regenerative shock absorber. In order to be implemented onto the vehicle, a regenerative shock absorber needs to meet the requirements for the power output, energy harvesting efficiency and vehicle dynamic control. The current regenerative shock absorbers pose some disadvantages, which many authors have attempted to address both mechanically and electrically. Each step forward in the research area would bring them closer to the implementation reality and their sustainability.

The current limitation of the direct-drive regenerative shock absorbers is the constraint of the packaging space. Because the coil speed with respect to the magnets cannot be amplified, the magnets and coils have to be large enough to obtain large electromechanical coupling constant. The main limitation of the indirect-drive regenerative shock absorber is that the complexity of the motion conversion mechanism can affect the vehicle dynamics, resulting in poor handling or discomfort. Therefore, it is suggested that the future design of the regenerative shock absorber should incorporate more efficient magnets, and the coil setup is preferably outside the magnets, and the damping should be presented in both compression phase and the recoil phase of the shock absorber motion. It is also expected that the mechanism needs to be less complicated to reduce the friction energy loss. For the regenerative shock absorber containing hydraulic/pneumatic system, the response time needs to be reduced to obtain the instant control of the vehicle.

Many researches have been done focusing on improving the performance of the regenerative shock absorbers, however, the integration with the vehicle has not been addressed enough yet. In the future research, it is recommended that dynamic model of the full vehicle needs to be considered as the platform for the regenerative shock absorbers, since the evaluation based on the full vehicle

suspension system is more accurate and closer to the reality. Based on the full vehicle suspension system model, a nonlinear suspension can also be studied for its advantages in broadening the energy harvesting bandwidth.

Active control is another area to be researched. Due to the contradiction between the energy harvesting and vehicle dynamic control performances, a control algorithm is needed to make a compromise between both the performances in accordance with the condition of the road surface and driver's demand. A power generating element can be used reversely as an actuation element when the active control becomes the priority and vice versa. Ideally, a balance point can be identified by the control system. As a result, the self-powering can be achieved intellectually where the energy harvested at the regeneration mode of the transducer is enough to power the actuation mode. Hence, future research should concentrate more on the active control algorithm and its incorporation with the energy harvesting.

## 11. Our Contributions

Our group has started the research work of the electromagnetic vibration energy harvesters since 2014 [140]. The time domain and frequency analysis approaches have been applied to solve the system equations [121,140,141]. The performance of electromagnetic vibration energy harvesters have been analyzed and optimized in dimensionless forms and compared with that of the piezoelectric vibration energy harvesters for different interface circuits [140,142–144]. Coupling loss factor of linear vibration energy harvesting systems in a framework of statistical energy analysis has been defined [140,144,145], the frequency ranges to enable statistical energy analysis of the electromagnetic vibration energy harvesters have been identified [140,145]. The relationships of coupling loss factor, dimensionless force factor, critical coupling strength, coupling quotient, electro-mechanical coupling factor, damping loss factor and modal densities have been established. The relationship of vibration energy harvester performance with dimensionless force factor has been disclosed. Numerical ranges of the dimensionless force factor have been defined for cases of weak, moderate and strong coupling [140,144]. The 2DOF vehicle quarter suspensions with piezoelectric and electromagnetic vibration energy harvesters have been studied where a dimensionless analysis method was proposed to predict the output voltage and harvested power for a 2DOF vibration energy harvesting system. This method allows us to compare the harvesting power and efficiency of the 2DOF vibration energy harvesting system and to evaluate the harvesting system performance regardless of the sizes or scales [11,141]. The quarter vehicle suspension system with linear regenerative electromagnetic shock absorber was simulated using Matlab<sup>®</sup> and Simulink<sup>®</sup>. The prototyped regenerative shock absorbers have been built and tested. The simulation model was established and validated via experiments. The validated simulation model was then used for the analysis of the system parameter sensitivity. The sensitivity analysis then led to the design optimization which allowed to maximize the vibrational energy harvesting [141].

## 12. Conclusions

The potential in converting vibration energy into electrical energy through the shock absorber is promising and rewarding and can make the vehicle more sustainable by consuming less amount of fuel.

In this paper, the recent technologies involved in regenerative shock absorber systems have been reviewed and categorized mainly into three types based on the conversion mechanisms: direct drive, indirect drive and hybrid. Their comparisons have been presented to understand the advantages and disadvantages in terms of conversion efficiency and compatibility. Damping performance of the regenerative shock absorber has been evaluated based on the drive modes as it is the original and basic function of the shock absorber.

In addition to the mechanical mechanism, electrical circuit and control algorithm are also the key components of the regenerative shock absorber system and can largely affect the overall performance.

With the proper control system, a balance state can be reached between the energy harvesting and vehicle dynamic control to obtain a better overall performance. A comprehensive review has also been conducted on each type of the road profile excitation inputs. This paper also presents the current technologies of the nonlinear models that are applicable onto the shock absorber system. It can thus be suggested that the efficiency evaluation of the drive modes and the nonlinear analysis of the regenerative shock absorber should be the focus of the research in the near to medium future. Finally, the recent works of our group have also been outlined to demonstrate the original contributions in this field.

**Author Contributions:** Resources and writing: Ran Zhang; Supervision: Xu Wang; Review & Editing: Xu Wang & Sabu John.

**Acknowledgments:** Authors would like to thank Australian Research Council Linkage Project grant LP160100132 for funding support.

**Conflicts of Interest:** The authors declare no conflict of interest.

## Nomenclature

$B$	magnetic field intensity
$L$	total coil length of the electromagnetic generator
$Bl$	the product of $B$ and $l$ or electromechanical coupling
$U$	voltage harvested over the external resistance
$V$	coil speed with respect to the magnets
$C_{eq}$	equivalent damping coefficient
$K_i$	motor constant or electromechanical coupling
$R$	external resistance
$N$	special frequency
$\Omega$	angular spatial frequency
$G_d(n)$	the vertical displacement with respect to the spatial frequency $n$
$G_d(\Omega)$	the vertical displacement with respect to the angular spatial frequency $\Omega$
$G_d(n_0)$	the vertical displacement when $n_0 = 0.1$ cycle/m
$G_d(\Omega_0)$	the vertical displacement when $\Omega_0 = 1$ rad/m
$P_{ob}$	Power spectral density of bounce
$P_{op}$	Power spectral density of pitch
$f_s$	spatial frequency
$l_f$	distance between centre of gravity of the vehicle and the front bumper
$l_r$	distance between centre of gravity of the vehicle and the rear bumper

## References

1. Lafarge, B.; Cagin, S.; Curea, O.; Perret, A.H. From functional analysis to energy harvesting system design: Application to car suspension. *Int. J. Interact. Des. Manuf.* **2016**, *10*, 37–50. [[CrossRef](#)]
2. Zuo, L.; Scully, B.; Shestani, J.; Zhou, Y. Design and characterization of an electromagnetic energy harvester for vehicle suspensions. *Smart Mater. Struct.* **2010**, *19*, 045003. [[CrossRef](#)]
3. Fayyad, S.M. Constructing control system for active suspension system. *Contemp. Eng. Sci.* **2012**, *5*, 189–200.
4. Gao, H.; Lam, J.; Wang, C. Multi-objective control of vehicle active suspension systems via load-dependent controllers. *J. Sound Vib.* **2006**, *290*, 654–675. [[CrossRef](#)]
5. Popovic, V.; Jankovic, D.; Vasic, B. Design and Simulation of Active Suspension System by Using Matlab. In Proceedings of the FISITA World Automotive Congress, Seoul, Korea, 12–15 June 2000.
6. Rao, K.D. Modeling, simulation and control of semi active suspension system for automobiles under matlab simulink using pid controller. *IFAC Proc. Vol.* **2014**, *47*, 827–831. [[CrossRef](#)]
7. Mouleeswaran, S. *Design and Development of Pid Controller-Based Active Suspension System for Automobiles*; INTECH Open Access Publisher: London, UK, 2012.
8. Ahmed, A.E.-N.S.; Ali, A.S.; Ghazaly, N.M.; El-Jaber, G.A. Pid controller of active suspension system for a quarter car model. *Int. J. Adv. Eng. Technol.* **2015**, *8*, 899.

9. Gaur, S. Vibration control of bus suspension system using pi and pid controller. *Int. J. Adv. Eng. Sci.* **2013**, *3*, 94–99.
10. Elliott, S.J.; Zilletti, M. Scaling of electromagnetic transducers for shunt damping and energy harvesting. *J. Sound Vib.* **2014**, *333*, 2185–2195. [[CrossRef](#)]
11. Xiao, H.; Wang, X.; John, S. A dimensionless analysis of a 2DOF piezoelectric vibration energy harvester. *Mech. Syst. Signal Process.* **2015**, *58*, 355–375. [[CrossRef](#)]
12. Lee, H.; Jang, H.; Park, J.; Jeong, S.; Park, T.; Choi, S. Design of a piezoelectric energy-harvesting shock absorber system for a vehicle. *Integr. Ferroelectr.* **2013**, *141*, 32–44. [[CrossRef](#)]
13. Xie, X.; Wang, Q. Energy harvesting from a vehicle suspension system. *Energy* **2015**, *86*, 385–392. [[CrossRef](#)]
14. Priya, S. Advances in energy harvesting using low profile piezoelectric transducers. *J. Electroceramics* **2007**, *19*, 167–184. [[CrossRef](#)]
15. Lien, I.; Shu, Y. Array of piezoelectric energy harvesting by the equivalent impedance approach. *Smart Mater. Struct.* **2012**, *21*, 082001. [[CrossRef](#)]
16. Xu, Z.; Shan, X.; Chen, D.; Xie, T. A novel tunable multi-frequency hybrid vibration energy harvester using piezoelectric and electromagnetic conversion mechanisms. *Appl. Sci.* **2016**, *6*, 10. [[CrossRef](#)]
17. Poulin, G.; Sarraute, E.; Costa, F. Generation of electrical energy for portable devices: Comparative study of an electromagnetic and a piezoelectric system. *Sens. Actuators A Phys.* **2004**, *116*, 461–471. [[CrossRef](#)]
18. Mitcheson, P.; Reilly, E.; Toh, T.; Wright, P.; Yeatman, E. Transduction mechanisms and power density for mems inertial energy scavengers. *Power MEMS* **2006**, *6*, 275–278.
19. Choi, J.-S.; Yoo, J. Design of a halbach magnet array based on optimization techniques. *IEEE Trans. Magn.* **2008**, *44*, 2361–2366. [[CrossRef](#)]
20. Jang, S.-M.; Jeong, S.-S.; Ryu, D.-W.; Choi, S.-K. Comparison of three types of pm brushless machines for an electro-mechanical battery. *IEEE Trans. Magn.* **2000**, *36*, 3540–3543. [[CrossRef](#)]
21. Cheng, S.; Arnold, D.P. A study of a multi-pole magnetic generator for low-frequency vibrational energy harvesting. *J. Micromech. Microeng.* **2009**, *20*, 025015. [[CrossRef](#)]
22. Kulkarni, S.; Koukharenko, E.; Torah, R.; Tudor, J.; Beeby, S.; O'Donnell, T.; Roy, S. Design, fabrication and test of integrated micro-scale vibration-based electromagnetic generator. *Sens. Actuators A Phys.* **2008**, *145*, 336–342. [[CrossRef](#)]
23. Harne, R.L. Theoretical investigations of energy harvesting efficiency from structural vibrations using piezoelectric and electromagnetic oscillators. *J. Acoust. Soc. Am.* **2012**, *132*, 162–172. [[CrossRef](#)] [[PubMed](#)]
24. Chen, C.; Liao, W.-H. A self-sensing magnetorheological damper with power generation. *Smart Mater. Struct.* **2012**, *21*, 025014. [[CrossRef](#)]
25. Ebrahimi, B.; Khamesee, M.B.; Golnaraghi, M.F. Design and modeling of a magnetic shock absorber based on eddy current damping effect. *J. Sound Vib.* **2008**, *315*, 875–889. [[CrossRef](#)]
26. Aldraihem, O.; Baz, A. Energy harvester with a dynamic magnifier. *J. Intell. Mater. Syst. Struct.* **2011**, *22*, 521–530. [[CrossRef](#)]
27. Lin, X.; Xuexun, G. Hydraulic transmission electromagnetic energy-regenerative active suspension and its working principle. In Proceedings of the 2010 2nd International Workshop on Intelligent Systems and Applications, Wuhan, China, 22–23 May 2010.
28. Noritsugu, T. Energy saving of a pneumatic system (2). Energy regenerative control of a pneumatic drive system. Application to active air suspension. *Hydraul. Pneum.* **1999**, *38*, 1–4.
29. Gupta, A.; Jendrzeczyk, J.; Mulcahy, T.; Hull, J. Design of electromagnetic shock absorbers. *Int. J. Mech. Mater. Des.* **2006**, *3*, 285–291. [[CrossRef](#)]
30. Ebrahimi, B.; Bolandhemmat, H.; Khamesee, M.B.; Golnaraghi, F. A hybrid electromagnetic shock absorber for active vehicle suspension systems. *Veh. Syst. Dyn.* **2011**, *49*, 311–332. [[CrossRef](#)]
31. Tang, X.; Lin, T.; Zuo, L. Design and optimization of a tubular linear electromagnetic vibration energy harvester. *IEEE/ASME Trans. Mechatron.* **2014**, *19*, 615–622. [[CrossRef](#)]
32. Cheung, J.T. *Frictionless Linear Electrical Generator for Harvesting Motion Energy*; DTIC Document: Fort Belvoir, VA, USA, 2004.
33. Zhang, P.S. Design of Electromagnetic Shock Absorbers for Energy Harvesting from Vehicle Suspensions. Master's Thesis, Stony Brook University, Stony Brook, NY, USA, 2010.

34. Jang, S.-M.; Choi, J.-Y.; Lee, S.-H.; Cho, H.-W.; Jang, W.-B. Analysis and experimental verification of moving-magnet linear actuator with cylindrical halbach array. *IEEE Trans. Magn.* **2004**, *40*, 2068–2070. [[CrossRef](#)]
35. Zhu, D.; Beeby, S.; Tudor, J.; Harris, N. Vibration energy harvesting using the halbach array. *Smart Mater. Struct.* **2012**, *21*, 075020. [[CrossRef](#)]
36. Long, Z.; He, G.; Xue, S. Study of eds & ems hybrid suspension system with permanent-magnet halbach array. *IEEE Trans. Magn.* **2011**, *47*, 4717–4724.
37. Yan, L.; Zhang, L.; Wang, T.; Jiao, Z.; Chen, C.-Y.; Chen, I. Magnetic field of tubular linear machines with dual halbach array. *Prog. Electromagn. Res.* **2013**, *136*, 283–299. [[CrossRef](#)]
38. Salauddin, M.; Park, J.Y. Design and experiment of human hand motion driven electromagnetic energy harvester using dual halbach magnet array. *Smart Mater. Struct.* **2017**, *26*, 035011. [[CrossRef](#)]
39. Zhu, D.; Beeby, S.; Tudor, M.; Harris, N. Electromagnetic vibration energy harvesting using an improved halbach array. In Proceedings of the PowerMEMS 2012, Atlanta, GA, USA, 2–5 December 2012.
40. Zhu, D.; Beeby, S.; Tudor, J.; Harris, N. Increasing output power of electromagnetic vibration energy harvesters using improved halbach arrays. *Sens. Actuators A Phys.* **2013**, *203*, 11–19. [[CrossRef](#)]
41. Elvin, N.G.; Elvin, A.A. An experimentally validated electromagnetic energy harvester. *J. Sound Vib.* **2011**, *330*, 2314–2324. [[CrossRef](#)]
42. Goldner, R.; Zerigian, P.; Hull, J. *A Preliminary Study of Energy Recovery in Vehicles by Using Regenerative Magnetic Shock Absorbers*; SAE Technical Paper 0148-7191; SAE: Warrendale, PA, USA, 2001.
43. Sapiński, B.; Rosół, M.; Węgrzynowski, M. Evaluation of an energy harvesting mr damper-based vibration reduction systemstem. *J. Theor. Appl. Mech.* **2016**, *54*, 333–344. [[CrossRef](#)]
44. Wang, R.; Ding, R.; Chen, L. Application of hybrid electromagnetic suspension in vibration energy regeneration and active control. *J. Vib. Control* **2016**, *24*, 223–233. [[CrossRef](#)]
45. Asadi, E.; Ribeiro, R.; Khamesee, M.B.; Khajepour, A. Analysis, prototyping and experimental characterization of an adaptive hybrid-electromagnetic damper for automotive suspension systems. *IEEE Trans. Veh. Technol.* **2016**, *66*, 3703–3713. [[CrossRef](#)]
46. Sapiński, B.; Rosół, M.; Węgrzynowski, M. Investigation of an energy harvesting mr damper in a vibration control system. *Smart Mater. Struct.* **2016**, *25*, 125017. [[CrossRef](#)]
47. Li, Z.; Zuo, L.; Kuang, J.; Luhrs, G. A motion rectifier based energy harvesting shock absorbers. In Proceedings of the 2012 ASME Design Engineering Conference, Chicago, IL, USA, 12–15 August 2012.
48. Li, P.; Zuo, L. Assessment of vehicle performances with energy-harvesting shock absorbers. *SAE Int. J. Passeng. Cars-Mech. Syst.* **2013**, *6*, 18–27. [[CrossRef](#)]
49. Zhang, Z.; Zhang, X.; Chen, W.; Rasim, Y.; Salman, W.; Pan, H.; Yuan, Y.; Wang, C. A high-efficiency energy regenerative shock absorber using supercapacitors for renewable energy applications in range extended electric vehicle. *Appl. Energy* **2016**, *178*, 177–188. [[CrossRef](#)]
50. Guo, S.; Liu, Y.; Xu, L.; Guo, X.; Zuo, L. Performance evaluation and parameter sensitivity of energy-harvesting shock absorbers on different vehicles. *Veh. Syst. Dyn.* **2016**, *54*, 918–942. [[CrossRef](#)]
51. Xie, L.; Li, J.; Cai, M. Design of a hybrid energy-harvesting shock absorber. In Proceedings of the International Forum on Energy, Environment Science and Materials (IFEESM 2015), Shenzhen, China, 25–26 September 2015.
52. Fukumori, Y.; Hayashi, R.; Matsumi, R.; Suda, Y.; Nakano, K. *Study on Independent Tuning Damping Characteristic by Coupling of Electromagnetic Dampers for Automobiles*; SAE Technical Paper 0148-7191; SAE: Warrendale, PA, USA, 2015.
53. Zheng, X.-c.; Yu, F.; Zhang, Y.-C. A novel energy-regenerative active suspension for vehicles. *J. Shanghai Jiaotong Univ. Sci.* **2008**, *13*, 184–188. [[CrossRef](#)]
54. Kawamoto, Y.; Suda, Y.; Inoue, H.; Kondo, T. Modeling of electromagnetic damper for automobile suspension. *J. Syst. Des. Dyn.* **2007**, *1*, 524–535. [[CrossRef](#)]
55. Kawamoto, Y.; Suda, Y.; Inoue, H.; Kondo, T. Electro-mechanical suspension system considering energy consumption and vehicle manoeuvre. *Veh. Syst. Dyn.* **2008**, *46*, 1053–1063. [[CrossRef](#)]
56. Ebrahimi, B.; Khamesee, M.B.; Golnaraghi, M.F. Feasibility study of an electromagnetic shock absorber with position sensing capability. In Proceedings of the 34th Annual Conference of IEEE Industrial Electronics, IECON 2008, Orlando, FL, USA, 10–13 November 2008; pp. 2988–2991.



57. Zhang, Y.; Huang, K.; Yu, F.; Gu, Y.; Li, D. Experimental verification of energy-regenerative feasibility for an automotive electrical suspension system. In Proceedings of the IEEE International Conference on Vehicular Electronics and Safety, ICVES 2007, Beijing, China, 13–15 December 2007; pp. 1–5.
58. Cheng, S.; Wang, N.; Arnold, D.P. Modeling of magnetic vibrational energy harvesters using equivalent circuit representations. *J. Micromech. Microeng.* **2007**, *17*, 2328. [[CrossRef](#)]
59. Liu, Y.; Xu, L.; Zuo, L. Design, modeling, lab and field tests of a mechanical-motion-rectifier-based energy harvester using a ball-screw mechanism. *IEEE/ASME Trans. Mechatron.* **2017**, *22*, 1933–1943. [[CrossRef](#)]
60. Cargo, C.J.; Plummer, A.R.; Hillis, A.J.; Schlotter, M. Determination of optimal parameters for a hydraulic power take-off unit of a wave energy converter in regular waves. *Proc. Inst. Mech. Eng. Part A J. Power Energy* **2011**, *226*, 98–111. [[CrossRef](#)]
61. Lin, X.; Bo, Y.; Xuexun, G.; Jun, Y. Simulation and performance evaluation of hydraulic transmission electromagnetic energy-regenerative active suspension. In Proceedings of the 2010 Second WRI Global Congress on Intelligent Systems, Wuhan, China, 16–17 December 2010; pp. 58–61.
62. Avadhany, S.; Abel, P.; Tarasov, V.; Anderson, Z. Regenerative Shock Absorber. U.S. Patent No. 8,376,100, 19 February 2013.
63. Henderson, R. Design, simulation, and testing of a novel hydraulic power take-off system for the pelamis wave energy converter. *Renew. Energy* **2006**, *31*, 271–283. [[CrossRef](#)]
64. Antaki, J.F.; Bertocci, G.E.; Green, E.C.; Nadeem, A.; Rintoul, T.; Kormos, R.L.; Griffith, B.P. A gait-powered autologous battery charging system for artificial organs. *ASAIO J.* **1995**, *41*, M588–M595. [[CrossRef](#)] [[PubMed](#)]
65. Chandler, D. *More Power from Bumps in the Road—MIT Students Develop Energy-Harvesting Shock Absorbers*; MIT News: Cambridge, MA, USA, 2009.
66. Liang, X.-C.; Zhao, J.-S. Research on recycling vibration energy of shock absorber. *Int. J. Veh. Des.* **2015**, *68*, 201–220. [[CrossRef](#)]
67. Fang, Z.; Guo, X.; Xu, L.; Zhang, H. Experimental study of damping and energy regeneration characteristics of a hydraulic electromagnetic shock absorber. *Adv. Mech. Eng.* **2013**, *5*, 943528. [[CrossRef](#)]
68. Wang, R.; Gu, F.; Cattley, R.; Ball, A.D. Modelling, testing and analysis of a regenerative hydraulic shock absorber system. *Energies* **2016**, *9*, 386. [[CrossRef](#)]
69. Galluzzi, R.; Tonoli, A.; Amati, N.; Curcuruto, G.; Conti, P.; Greco, G.; Nepote, A. *Regenerative Shock Absorbers and the Role of the Motion Rectifier*; SAE Technical Paper 0148-7191; SAE: Warrendale, PA, USA, 2016.
70. Van der Westhuizen, S.F.; Els, P.S. Comparison of different gas models to calculate the spring force of a hydropneumatic suspension. *J. Terramech.* **2015**, *57*, 41–59. [[CrossRef](#)]
71. Tao, S.; Fan, Y.; You, Z. Investigation on non-linear characteristics of hydropneumatic suspension modeling and simulation for engineering vehicles. *Acta Simulata Syst. Sin.* **2005**, *1*, 55.
72. Longxin, Z.; Xiaogang, W. Structure and performance analysis of regenerative electromagnetic shock absorber. *J. Netw.* **2010**, *5*, 1467–1474.
73. Crolla, D. Off-road vehicle dynamics. *Veh. Syst. Dyn.* **1981**, *10*, 253–266. [[CrossRef](#)]
74. Shaiju, M.; Mitra, M. Energy generating suspension system for commercial vehicles. *SAE Int. J. Commer. Veh.* **2008**, *1*, 248–253. [[CrossRef](#)]
75. Jin-qiu, Z.; Zhi-zhao, P.; Lei, Z.; Yu, Z. A review on energy-regenerative suspension systems for vehicles. In Proceedings of the World Congress on Engineering, London, UK, 3–5 July 2013; pp. 3–5.
76. Nakano, K. Combined type self-powered active vibration control of truck cabins. *Veh. Syst. Dyn.* **2004**, *41*, 449–473. [[CrossRef](#)]
77. Choi, S.; Seong, M.; Kim, K. Vibration control of an electrorheological fluid-based suspension system with an energy regenerative mechanism. *Proc. Inst. Mech. Eng. Part D J. Automob. Eng.* **2009**, *223*, 459–469. [[CrossRef](#)]
78. Chu, K.S.; Zou, L.; Liao, W.-H. A mechanical energy harvested magnetorheological damper with linear-rotary motion converter. In Proceedings of the SPIE Smart Structures and Materials+ Nondestructive Evaluation and Health Monitoring, Las Vegas, NV, USA, 20–24 March 2016.
79. Sabzehgar, R.; Maravandi, A.; Moallem, M. Energy regenerative suspension using an algebraic screw linkage mechanism. *IEEE/ASME Trans. Mechatron.* **2014**, *19*, 1251–1259. [[CrossRef](#)]
80. Zhang, Y.; Zhang, X.; Zhan, M.; Guo, K.; Zhao, F.; Liu, Z. Study on a novel hydraulic pumping regenerative suspension for vehicles. *J. Frankl. Inst.* **2015**, *352*, 485–499. [[CrossRef](#)]

81. Singh, S.; Satpute, N.V. Design and analysis of energy-harvesting shock absorber with electromagnetic and fluid damping. *J. Mech. Sci. Technol.* **2015**, *29*, 1591. [[CrossRef](#)]
82. Satpute, N.V.; Satpute, S.N.; Jugulkar, L.M. Hybrid electromagnetic shock absorber for energy harvesting in a vehicle suspension. *Proc. Inst. Mech. Eng. Part C J. Mech. Eng. Sci.* **2016**, *231*, 1500–1517. [[CrossRef](#)]
83. Demetgul, M.; Guney, I. Design of the hybrid regenerative shock absorber and energy harvesting from linear movement. *J. Clean Energy Technol.* **2017**, *5*, 81–84. [[CrossRef](#)]
84. Liu, Y.; Zuo, L. Mixed skyhook and power-driven-damper: A new low-jerk semi-active suspension control based on power flow analysis. *J. Dyn. Syst. Meas. Control* **2016**, *138*, 081009. [[CrossRef](#)]
85. Cole, D.; Cebon, D. Truck suspension design to minimize road damage. *Proc. Inst. Mech. Eng. Part D J. Automob. Eng.* **1996**, *210*, 95–107. [[CrossRef](#)]
86. Yan, S.; Sun, W. Energy regeneration scheme and self-powered criterion of motor-driven active suspension. In Proceedings of the 2016 35th Chinese Control Conference (CCC), Chengdu, China, 27–29 July 2016; pp. 8926–8931.
87. Shi, D.; Pisu, P.; Chen, L.; Wang, S.; Wang, R. Control design and fuel economy investigation of power split hev with energy regeneration of suspension. *Appl. Energy* **2016**, *182*, 576–589. [[CrossRef](#)]
88. Ottman, G.K.; Hofmann, H.F.; Bhatt, A.C.; Lesieutre, G.A. Adaptive piezoelectric energy harvesting circuit for wireless remote power supply. *IEEE Trans. Power Electron.* **2002**, *17*, 669–676. [[CrossRef](#)]
89. Ding, R.; Wang, R.; Meng, X.; Chen, L. Study on coordinated control of the energy regeneration and the vibration isolation in a hybrid electromagnetic suspension. *Proc. Inst. Mech. Eng. Part D J. Automob. Eng.* **2016**, *231*, 1530–1539. [[CrossRef](#)]
90. Arroyo, E.; Badel, A.; Formosa, F. Synchronized switch harvesting technique applied to electromagnetic vibrations harvester. In Proceedings of the 10th International Workshop on Micro and Nanotechnology for Power Generation and Energy Conversion Applications (Power MEMS 2010), Leuven, Belgium, 30 November–3 December 2010; pp. 45–48.
91. Sanchez, D.; Jodka, E.; Hoffmann, D.; Manoli, Y. Interface circuit using smfe technique for an inductive kinetic generator operating as a frequency-up converter. In *Journal of Physics: Conference Series*; IOP Publishing: Bristol, UK, 2013; p. 012051.
92. Arroyo, E.; Badel, A.; Formosa, F. Energy harvesting from ambient vibrations: Electromagnetic device and synchronous extraction circuit. *J. Intell. Mater. Syst. Struct.* **2013**, *24*, 2023–2035. [[CrossRef](#)]
93. Dwari, S.; Parsa, L. An efficient ac–dc step-up converter for low-voltage energy harvesting. *IEEE Trans. Power Electron.* **2010**, *25*, 2188–2199. [[CrossRef](#)]
94. Liu, Y.; Chen, W.; Zhang, Z.; Hua, G. Energy-regenerative shock absorber for transportation vehicles based on dual overrunning clutches: Design, modeling, and simulation. *Transp. Res. Rec. J. Transp. Res. Board* **2016**, *2551*, 126–136. [[CrossRef](#)]
95. Han, S.; Divan, D. Bi-directional dc/dc converters for plug-in hybrid electric vehicle (PHEV) applications. In Proceedings of the twenty-Third Annual IEEE, Applied Power Electronics Conference and Exposition, APEC 2008, Austin, TX, USA, 24–28 February 2008; pp. 784–789.
96. Cao, X.; Chiang, W.-J.; King, Y.-C.; Lee, Y.-K. Electromagnetic energy harvesting circuit with feedforward and feedback DC–DC PWM boost converter for vibration power generator system. *IEEE Trans. Power Electron.* **2007**, *22*, 679–685. [[CrossRef](#)]
97. Kazimierzczuk, M.K.; Massarini, A. Feedforward control of dc-dc pwm boost converter. *IEEE Trans. Circuits Syst. I Fundam. Theory Appl.* **1997**, *44*, 143–148. [[CrossRef](#)]
98. Liu, J.; Li, X.; Wang, Z.; Zhang, Y. Modelling and experimental study on active energy-regenerative suspension structure with variable universe fuzzy pd control. *Shock Vib.* **2016**, *2016*, 6170275. [[CrossRef](#)]
99. Tiwari, A.; Siddique, M.K.; Naseem, M. Controlling the vibration of bus suspension system using PID controller. *Int. J. Emerg. Technol. Adv. Eng.* **2015**, *5*, 519–523.
100. Gururaj, M.S.; Selvakumar, A. Fuzzy logic control for half car suspension system using Matlab. *Int. J. Eng. Res. Technol.* **2014**, *3*, 10–16.
101. Kuber, C. Modelling simulation and control of an active suspension system. *Int. J. Mech. Eng. Technol. IJMET* **2014**, *5*, 66–75.
102. Zhou, Q. *Research and Simulation on New Active Suspension Control System*; Lehigh University: Bethlehem, PA, USA, 2013.

103. Fukumori, Y.; Hayashi, R.; Okano, H.; Suda, Y.; Nakano, K. Study on coupled shock absorber system using four electromagnetic dampers. In *Journal of Physics: Conference Series*; IOP Publishing: Bristol, UK, 2016; p. 012217.
104. Zhang, H.; Li, G.; Wang, Y.; Gu, Y.; Wang, X.; Guo, X. *Simulation Analysis on Controllability of Hydraulic Electrical Energy Regenerative Semi-Active Suspension*; SAE Technical Paper 0148-7191; SAE: Warrendale, PA, USA, 2016.
105. Hsieh, C.-Y.; Huang, B.; Golnaraghi, F.; Moallem, M. Regenerative skyhook control for an electromechanical suspension system using a switch-mode rectifier. *IEEE Trans. Veh. Technol.* **2016**, *65*, 9642–9650. [[CrossRef](#)]
106. Hsieh, C.-Y.; Moallem, M.; Golnaraghi, F. A bidirectional boost converter with application to a regenerative suspension system. *IEEE Trans. Veh. Technol.* **2016**, *65*, 4301–4311. [[CrossRef](#)]
107. Ataei, M.; Asadi, E.; Goodarzi, A.; Khajepour, A.; Khamesee, M.B. Multi-objective optimization of a hybrid electromagnetic suspension system for ride comfort, road holding and regenerated power. *J. Vib. Control* **2017**, *23*, 782–793. [[CrossRef](#)]
108. Clemen, L.; Anubi, O.M.; Margolis, D. On the regenerative capabilities of electrodynamic dampers using bond graphs and model predictive control. *J. Dyn. Syst. Meas. Control* **2016**, *138*, 051006. [[CrossRef](#)]
109. Casavola, A.; Di Iorio, F.; Tedesco, F. A multiobjective  $h_{\infty}$  control strategy for energy harvesting in regenerative vehicle suspension systems. *Int. J. Control* **2017**, *91*, 741–754. [[CrossRef](#)]
110. Zuo, L.; Tang, X. Large-scale vibration energy harvesting. *J. Intell. Mater. Syst. Struct.* **2013**, *24*, 1405–1430. [[CrossRef](#)]
111. Nakano, K.; Suda, Y.; Nakadai, S. Self-powered active vibration control using a single electric actuator. *J. Sound Vib.* **2003**, *260*, 213–235. [[CrossRef](#)]
112. Scruggs, J.; Iwan, W. Control of a civil structure using an electric machine with semiactive capability. *J. Struct. Eng.* **2003**, *129*, 951–959. [[CrossRef](#)]
113. Scruggs, J. *Active, Regenerative Control of Civil Structures*; Virginia Polytechnic Institute and State University: Blacksburg, VA, USA, 1999.
114. Scruggs, J.T.; Iwan, W. Structural control with regenerative force actuation networks. *Struct. Control Health Monit.* **2005**, *12*, 25–45. [[CrossRef](#)]
115. Okada, Y. Variable resistance type energy regenerative damper using pulse width modulated step-up chopper. *J. Vib. Acoust.* **2002**, *14*, 110–115.
116. Tang, X.; Zuo, L. Simulation and experiment validation of simultaneous vibration control and energy harvesting from buildings using tuned mass dampers. In Proceedings of the American Control Conference (ACC), San Francisco, CA, USA, 29 June–1 July 2011; pp. 3134–3139.
117. Wang, Z.; Chen, Z.; Spencer, B.F., Jr. Self-powered and sensing control system based on mr damper: Presentation and application. In Proceedings of the SPIE Smart Structures and Materials+ Nondestructive Evaluation and Health Monitoring, San Diego, CA, USA, 8–12 March 2009.
118. Choi, Y.-T.; Wereley, N.M. Self-powered magnetorheological dampers. *J. Vib. Acoust.* **2009**, *131*, 044501. [[CrossRef](#)]
119. Yu, L.; Huo, S.; Xuan, W.; Zuo, L. Assessment of ride comfort and braking performance using energy-harvesting shock absorber. *SAE Int. J. Passeng. Cars-Mech. Syst.* **2015**, *8*, 482–491. [[CrossRef](#)]
120. Huang, B.; Hsieh, C.-Y.; Golnaraghi, F.; Moallem, M. Development and optimization of an energy-regenerative suspension system under stochastic road excitation. *J. Sound Vib.* **2015**, *357*, 16–34. [[CrossRef](#)]
121. Wang, X.; Liang, X.; Wei, H. A study of electromagnetic vibration energy harvesters with different interface circuits. *Mech. Syst. Signal Process.* **2015**, *58*, 376–398. [[CrossRef](#)]
122. Li, P.; Zuo, L. Influences of the electromagnetic regenerative dampers on the vehicle suspension performance. *Proc. Inst. Mech. Eng. Part D J. Automob. Eng.* **2017**, *231*, 383–394. [[CrossRef](#)]
123. Perret, A.H.; Curea, O.; Cagin, S.; Ortega, A.G. From functional analysis to energy harvesting system design: Application to car suspension. In Proceedings of the Virtual Concept Workshop 2014, Medellin, CO, USA, 26–28 March 2014.
124. ISO. *Mechanical Vibration-Road Surface Profiles-Reporting of Measured Data*; International Organization for Standardization (ISO): Geneva, Switzerland, 1995.
125. Agostinacchio, M.; Ciampa, D.; Olita, S. The vibrations induced by surface irregularities in road pavements—A Matlab@approach. *Eur. Transp. Res. Rev.* **2014**, *6*, 267–275. [[CrossRef](#)]

126. Zhang, Y.; Guo, K.; Wang, D.; Chen, C.; Li, X. Energy conversion mechanism and regenerative potential of vehicle suspensions. *Energy* **2016**, *119*, 961–970. [[CrossRef](#)]
127. Li, Z.; Zuo, L.; Kuang, J.; Luhrs, G. Energy-harvesting shock absorber with a mechanical motion rectifier. *Smart Mater. Struct.* **2012**, *22*, 025008. [[CrossRef](#)]
128. Zhang, R.; Wang, X.; Liu, Z. A novel regenerative shock absorber with a speed doubling mechanism and its monte carlo simulation. *J. Sound Vib.* **2018**, *417*, 260–276. [[CrossRef](#)]
129. Barton, D.A.; Burrow, S.G.; Clare, L.R. Energy harvesting from vibrations with a nonlinear oscillator. *J. Vib. Acoust.* **2010**, *132*, 021009. [[CrossRef](#)]
130. Nguyen, D.; Halvorsen, E.; Jensen, G.; Vogl, A. Fabrication and characterization of a wideband mems energy harvester utilizing nonlinear springs. *J. Micromech. Microeng.* **2010**, *20*, 125009. [[CrossRef](#)]
131. Soliman, M.; Abdel-Rahman, E.; El-Saadany, E.; Mansour, R. A wideband vibration-based energy harvester. *J. Micromech. Microeng.* **2008**, *18*, 115021. [[CrossRef](#)]
132. Yang, W.; Towfighian, S. A hybrid nonlinear vibration energy harvester. *Mech. Syst. Signal Process.* **2017**, *90*, 317–333. [[CrossRef](#)]
133. Erturk, A.; Hoffmann, J.; Inman, D. A piezomagnetoelastic structure for broadband vibration energy harvesting. *Appl. Phys. Lett.* **2009**, *94*, 254102. [[CrossRef](#)]
134. Ferrari, M.; Ferrari, V.; Guizzetti, M.; Andò, B.; Baglio, S.; Trigona, C. Improved energy harvesting from wideband vibrations by nonlinear piezoelectric converters. *Sens. Actuators A Phys.* **2010**, *162*, 425–431. [[CrossRef](#)]
135. Stanton, S.C.; McGehee, C.C.; Mann, B.P. Reversible hysteresis for broadband magnetopiezoelastic energy harvesting. *Appl. Phys. Lett.* **2009**, *95*, 174103. [[CrossRef](#)]
136. Mann, B.; Sims, N. Energy harvesting from the nonlinear oscillations of magnetic levitation. *J. Sound Vib.* **2009**, *319*, 515–530. [[CrossRef](#)]
137. Gao, M.; Wang, Y.; Wang, Y.; Wang, P. Experimental investigation of non-linear multi-stable electromagnetic-induction energy harvesting mechanism by magnetic levitation oscillation. *Appl. Energy* **2018**, *220*, 856–875. [[CrossRef](#)]
138. Özcan, D.; Sönmez, Ü.; Güvenç, L. Optimisation of the nonlinear suspension characteristics of a light commercial vehicle. *Int. J. Veh. Technol.* **2013**, *2013*, 562424. [[CrossRef](#)]
139. Cui, Y.; Kurfess, T.R.; Messman, M. Testing and modeling of nonlinear properties of shock absorbers for vehicle dynamics studies. In Proceedings of the World Congress on Engineering and Computer Science, San Francisco, CA, USA, 20–22 October 2010; pp. 20–22.
140. Wang, X. *Frequency Analysis of Vibration Energy Harvesting Systems*; Academic Press: London, UK, 2016.
141. Bawahab, M.; Xiao, H.; Wang, X. *A Study of Linear Regenerative Electromagnetic Shock Absorber System*; SAE Technical Paper; SAE International: London, UK, 2015.
142. Wang, X.; Liang, X.; Hao, Z.; Du, H.; Zhang, N.; Qian, M. Comparison of electromagnetic and piezoelectric vibration energy harvesters with different interface circuits. *Mech. Syst. Signal Process.* **2016**, *72*, 906–924. [[CrossRef](#)]
143. Wang, X.; John, S.; Watkins, S.; Yu, X.; Xiao, H.; Liang, X.; Wei, H. Similarity and duality of electromagnetic and piezoelectric vibration energy harvesters. *Mech. Syst. Signal Process.* **2015**, *52*, 672–684. [[CrossRef](#)]
144. Wang, X.; Liang, X.; Shu, G.; Watkins, S. Coupling analysis of linear vibration energy harvesting systems. *Mech. Syst. Signal Process.* **2016**, *70*, 428–444. [[CrossRef](#)]
145. Wang, X. Coupling loss factor of linear vibration energy harvesting systems in a framework of statistical energy analysis. *J. Sound Vib.* **2016**, *362*, 125–141. [[CrossRef](#)]

