



**Lincoln  
University**  
*Te Whare Wānaka o Aoraki*  
CHRISTCHURCH • NEW ZEALAND



# Building a professional research profile: A workshop for staff and postgraduate students

Sarah L. Tritt and Roger G. Dawson  
Library, Teaching and Learning  
May 2017

New Zealand's specialist land-based university

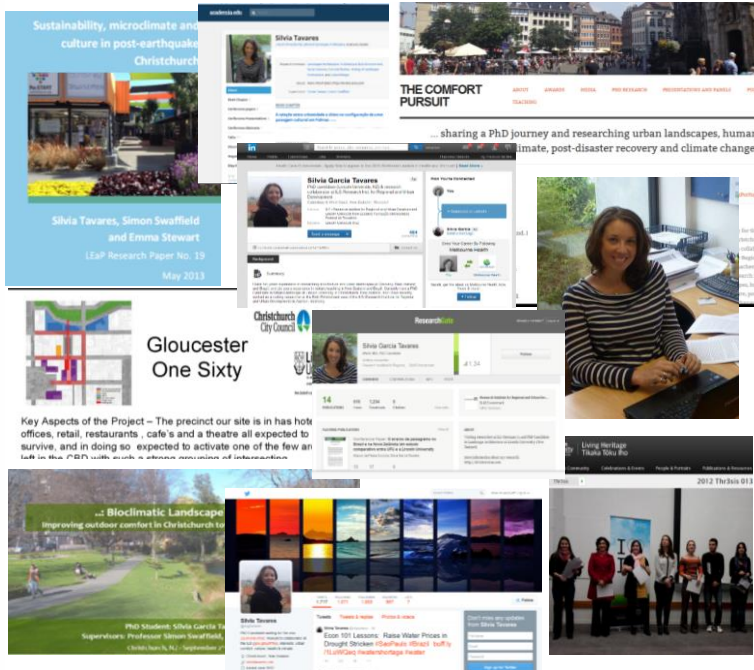


# Lincoln University Emerging Researchers

Brought to you by Library,  
Teaching and Learning

## Researcher Profile **Silvia Garcia Tavares**

Lincoln University Research Archive | Lincoln University Living Heritage | Professional Media



# Professional Profiles

<http://researcharchive.lincoln.ac.nz> | <http://livingheritage.lincoln.ac.nz>



New Zealand's specialist land-based university

New Zealand's specialist land-based university



# Strategies

1. Describe what you do – your research
2. Focus on building a research community – will build over time
3. Network both online and in person – academic events & conferences
4. Nurture the network – regular connect

# Considerations

- How do you want to present yourself ?  
Twitter? Blog? LinkedIn?
- How much time do you have to maintain your professional profile?
- How much control, interaction do you want?
- How to balance privacy vs visibility?



# What might a professional portfolio include?

- List of your publications/research outputs
- Traditional CV
- Samples of your work
- Personal website/blog
- LinkedIn profile



# Power of technology

Linking to other people:

- Blogs and websites
- Research communities/networks e.g.: [ResearchGate](#); [Mendeley](#); [Vitae](#) (lists communities) Google Scholar (can follow people); [PLOS Channels](#)
- Researcher identity: [ORCID](#); [ResearcherID](#)
- Twitter [Kudos](#)
- Altmetric
- Professional media compared to social media
  - LinkedIn ✓
  - Facebook ?

# WordPress

- More than a Blog...
- Open source so free to use
- Easy to install
- Publish and edit your own content

# Research Communities

- [Academia.edu](https://www.academia.edu) - social networking platform
- [Researchgate](https://www.researchgate.net) - social networking site, developed by scientists for scientists
- [Mendeley](https://www.mendeley.com) - A social reference management site (and an alternative to EndNote)



# Academia.edu

- Upload your research outputs,
- Analytics on your profile and papers
- Follow other researchers in your field
- Notification when others view your work

# Researchgate

- Upload your research outputs
- Choose topics or researchers to follow
- Ask a research question
- Collaborate with peers
- Explore career opportunities

# Mendeley

- Upload your research publications
- Provide a brief academic CV
- Social collaboration
- Free online storage to 2GB
- Can work with large collections of PDFs
- Discover new research in your field

# Kudos

- Maximize the visibility and impact of published articles
- <https://www.growkudos.com>

# Altmetric

Monitors the impact of your research, e.g.

- Blogs
- Social media
- Mendeley
- Public policy documents
- Post publication peer review platforms



# Vitae

## Vitae – releasing the potential of researchers

- Useful resources and tips
  - Researcher Development Framework RDF
    - *“doctorate, are a member of research staff, pursuing an academic career or thinking about applying the skills developed during your PhD in another career”*
      - Identify your strengths and gaps in development
      - Prioritise development needs
      - Monitor progress

# The Research Whisperer Scholarly Kitchen

New Zealand's specialist land-based university

# Researcher Identity

As part of your professional portfolio create a researcher identity, to support networking and showcasing your research.

## Why is this important?

Enables you to manage your publications, track citations, check who is citing your publications identify potential collaborators and avoid author misidentification

## For example:

- [ORCID](#) – see [JISC](#) for an overview
- [ResearcherID](#)
- [Scopus ID](#)
- [Google Scholar Citations](#)



# ORCID

## Create your profile



Go to <http://orcid.org/>  
And follow the 3 easy steps

ORCID

Connecting Research  
and Researchers

FOR RESEARCHERS

FOR ORGANIZATIONS

ABOUT

HELP

### DISTINGUISH YOURSELF IN THREE EASY STEPS

ORCID provides a permanent digital identifier that distinguishes you from every other researcher and, through integration in key research workflows such as manuscript and grant submission, supports automated linkages between you and your professional activities ensuring that your work is recognized. Find out more.

1

**REGISTER** Get your unique ORCID identifier Register now!  
Register on the ORCID website.

2

**ADD YOUR INFO** Link your ORCID record with your professional information and link to your other identifiers such as Scopus or ResearcherID or iDORIS.

3

**USE YOUR ORCID ID** Include your ORCID identifier on your Webpage, when you submit publications, apply for grants, and in key research workflows to ensure you get credit for your work.

Create a permanent  
researcher identity

Protect your  
scholarly outputs

Manage your  
publications and CV

Create a  
sustainable profile




**Lincoln  
University**  
*Te Whare Wānanga o Aoraki*  
CHRISTCHURCH • NEW ZEALAND

land-based university

## Tavares, S. G.

### ORCID ID

 [orcid.org/0000-0002-8405-9717](https://orcid.org/0000-0002-8405-9717)

### Also known as

Tavares, Silvia G.

### Keywords

urban comfort, urban design, urban landscapes, climate, culture, post-disaster, human comfort

### Websites

[Lincoln University Community Archive](#)  
[The Comfort Pursuit](#)  
[Academia.edu](#)  
[Research Gate](#)  
[Slideshare](#)  
[Mendeley profile](#)

### Other IDs

[Scopus Author ID: 55350590400](#)  
[ResearcherID: E-6337-2017](#)

### Biography

I am a lecturer in Urban Design at James Cook University, in Australia. My previous professional experience include New Zealand, Germany, and Brazil. In New Zealand I worked as an assistant lecturer in Landscape Architecture at Lincoln University, in Germany I was a visiting researcher at the ILS (Research Institute for Regional and Urban Development) in Aachen, and in Brazil I lectured at the Universidade Federal do Tocantins, where I was the Coordinator of the Building Science Laboratory and Head of the Culture Department. I hold a PhD in Urban Landscapes from Lincoln University (New Zealand), a Masters in Building and Urban Habitability from the Universidade Federal do Rio Grande do Sul (Brazil), and a Bachelor in Architecture and Urbanism from Universidade Federal de Pelotas (Brazil).

Silvia has made good use of the features in ORCID, e.g.

- Links to her blog
- Employment history
- Publications
- Research communities



Universidade Federal do Rio Grande do Sul: Porto Alegre, RS, Brazil

2005-03 to 2007-03

Masters of Architecture (PROPAR - Programa de Pós-Graduação em Arquitetura)

Source: Tavares, S. G.

Created: 2014-04-21

Created: 2014-04-21

Universidade Federal de Pelotas: Pelotas, RS, Brazil

1999-04 to 2004-04

Sort

New Zealand

ure at the Faculty of Environment Society

# Example of ORCID

- Brian Kelly - <http://ukwebfocus.wordpress.com/>

## UK Web Focus

Reflections on the Web and Web 2.0

HOME ABOUT BLOG POLICIES CONTACT EVALUATION GUEST POSTS KEY BLOG POSTS PAPERS

### About this Blog

The blog is written by Brian Kelly. Brian was the UK Web Focus adviser based at JISC-funded UKOLN from 1997-July 2010. Brian is now an independent consultant.

This blog functions as an open notebook which provides personal thoughts, reflections and observations on the role of the Web in higher and further education which I hope will inform readers and stimulate discussion and debate, both on this blog and elsewhere, including on Twitter.

Note that you can also view [information on Brian's peer-reviewed papers](#). My ORCID ID is [0000-0001-5875-8744](#)

You can also access [Brian's](#)

### Listening to Freshers

Posted by [Brian Kelly \(UK Web Focus\)](#) on 24 September 2013

Just over a year ago I [sent a message to the website-info-mgt JISCMail list](#) in which I commented how I had noticed that "several unis promoted a Freshers Week Twitter tag. I came across #HelloKent, #UoNFreshers, #HelloBrum, #sussexfreshers, #bcufreshers and (possibly) #imoxfordbrookes". In light of my observations I subsequently used the Twubs Twitter archiving service to set up archives of tweets for the hashtags #HelloKent, #UoNFreshers, #HelloBrum, #sussexfreshers and #bcufreshers.

Fast forward a year and yesterday I came across [a tweet from @Jayconsulting](#) which informed me that:

*Freshers advice offered via Twitter | News | Times Higher Education* <http://www.timeshighereducation.co.uk/news/freshers-advice-offered-via-twitter/2007585.article#.UkA0mo8ZgZA.twitter...>

The article in the Times Higher, entitled *Freshers advice offered via Twitter* describes how "The National Union of Students is hosting its first-ever Twitter question and answer sessions, offering first years advice on a range of topics" and went on to explain how "The Freshers Survival support sessions will run until Friday, tackling a different issue each day, with experts dishing out advice to thousands of new undergraduates".

The changes in the higher education sector from when I was a student in the 1970s are not just about the technology, however. I suspect in those days if the technology had been available there would have been a more political aspects to the discussions, whereas in the twenty-first century we find that "Founder of the financial advice forum MoneySavingExpert.com, Martin Lewis, will be on hand to offer tips on budgeting (Thursday), while relationship expert Tracey Cox will advise on social life, sex and relationships (Friday)"!

But how will this week's tweet chats develop? Will students actively participate in the discussions about budgeting, sex and relationships? Will commercial companies sport the marketing opportunities which use of this hashtag may provide? Or perhaps evangelical Christians Will use modern technology to provide an opportunity to provide a Christian message about sex and relationships.

Search

### Featured Paper

A paper entitled [A challenge to web accessibility metrics and guidelines: putting people and processes first](#) argued that "that web accessibility is not an intrinsic characteristic of a digital resource but is determined by complex political, social and other contextual factors, as well as technical aspects which are the focus of WAI standardisation activities". Therefore it is inappropriate to develop legislation only associated with properties of digital resources. BS 8878, in contrast, addresses the policies and processes associated with the development of digital products.

Further peer-reviewed papers [are available from the University of Bath](#)

ENABLE CHAT MODE New! More room to chat. X Feed

Live Feed

@JobzoneEdColl Jobzone

# Professional portfolio

Maximising the use of:

## [Lincoln University Research Archive](#)

- Your research outputs

## [Lincoln University Living Heritage](#)

- Activities associated with your research

# Professional Portfolio

Living Heritage can store information associated with your research:

- Consider including all sorts of formats, e.g. videos, podcasts

Items in About Our Research / Thr3sis (show all 31)



2013 Thr3sis 01



2013 Thr3sis 08



2013 Thr3sis 02



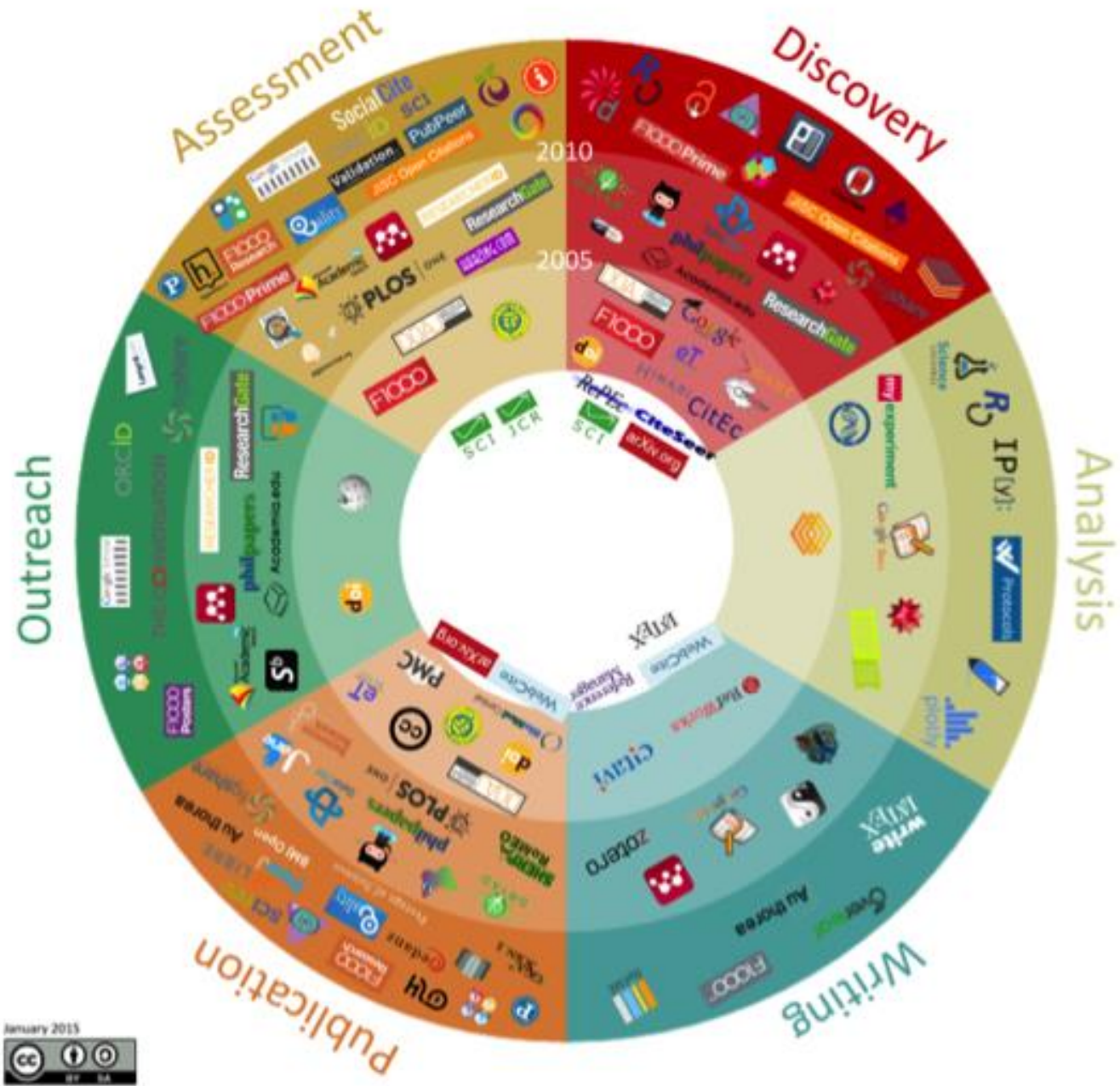
2013 Thr3sis 07

New Zealand's specialist land-based university

# Summary

## Where to begin ?

- Register for an ORCID
  - Load your research outputs
- Explore research communities, e.g. ResearchGate; Academia.edu



# Publishing and Publications



New Zealand's specialist land-based university



# Research outputs

Your research outputs may include:

- Thesis or dissertation
- Conference presentation
- Poster presentation
- Journal articles
- and more...



As you create your outputs  
you will create  
numerous **versions**

# Versions of your work

What?

- Drafts; revisions
- Preprint (pre peer-review)
- Publishers version/Accepted manuscript (post peer-review)
- [VERSIONS Toolkit](#)
- Organise your versions using EndNote or Excel

**Version 1.0  
launched!**

# Versions of your work

Why are **versions** important?

- Record of your **development as researcher**, e.g. working paper may develop into a journal article
- Some Publishers allow the publishers version to be included in an **open access** e.g. **Lincoln University Research Archive (LURA)**
  - Increases your visibility as a researcher

# Open Access

July 2013 Lincoln University adopted **OA policy**.

- Theses and dissertations are mandated
- Depositing other outputs to Research Archive
- Consider OA Journals along with subscription journals
- **Advantages** of OA: timeliness and visibility



# Embargoes

- Lincoln University wants to collect all your outputs
- You have **control** over the timing of open access
  - E.g. single release, i.e. when your thesis is released we can release associated works

# Publishing

Writing for publication:

- Getting started >LU Database: [Sage Research Methods](#)

Where to publish?

- Check with **Supervisor**; colleagues; peers
- View **journal websites** – Aims and scope of journal; Impact factor; Peer-review; Permissions
- Journal Impact Factors - Check [Journal Citation Report](#) (doesn't include all journal titles)
- [DOAJ: Directory of Open Access Journals](#)
- Analytic tools, e.g.: **Scopus**; **Web of Science**

# Publisher Article Processing Charges

- Some publishers may charge authors to publish via the Open access model
- **Funding** may be available for OA publishing via your faculty or supervisor
  - [Hub](#) information



# Publishing

Questions to consider, for example:

- Is journal peer reviewed?
- Generalist or niche?
- What are the Journal's policies regarding Open Access?
- What is the time from submission to publication?
- What do you retain the rights to?

[More LU: More:Taylor and Francis video](#)

# Authors Rights

- Publishers contracts
  - sign over copyright to Publishers?
  - be aware of what is covered, e.g. text, images, graphics etc
- Third party copyright – do you have copyright permission to use others' works (images, graphics etc)? If NOT, you need to remove
- [Creative Commons](#) – choose a licence for your work



# Publishers contracts

- Information on publishing agreements go to **Information for Authors** on a publisher or journal web site, for example:
  - [Elsevier](#)
  - [Sage](#)
  - [Taylor & Francis](#)
  - [Wiley Blackwell](#)

# OA search engines

## Base

- Academic open access web resources
  - <https://www.base-search.net/about/en/>

## Core

- Connecting repositories
  - <https://core.ac.uk/>