

## CO<sub>2</sub> Plume Migration with Gravitational, Viscous, and Capillary Forces in Saline Aquifers

Hyesoo Lee, Youngho Jang, Joohyung Kim, Woodong Jung, and Womno Sung  
Department of Natural Resources and Environmental Engineering, Hanyang University  
Seoul, Korea

### ABSTRACT

When injecting CO<sub>2</sub> in saline aquifers, in order to investigate realistic flow, this study proposes a dimensionless group in the form of combination of Capillary number and Bond number to consider three forces of gravitational, viscous and capillary forces, simultaneously. Using of each dimensionless group individually is insufficient to obtain a satisfactory correlation with flow behavior of injected CO<sub>2</sub>. With the proposed dimensionless group, the universal profile of CO<sub>2</sub> saturation was obtained in describing CO<sub>2</sub> flow behaviors for CO<sub>2</sub> injection rate, CO<sub>2</sub>-water interfacial tension, and density difference between CO<sub>2</sub> and water. Thus, more realistic CO<sub>2</sub> flow behavior was analyzed.

**KEY WORDS:** CO<sub>2</sub> sequestration; saline aquifers; CO<sub>2</sub> flow behavior; Capillary number; Bond number; dimensionless group.

### INTRODUCTION

Geological sequestration of CO<sub>2</sub> is one of the practical technologies for mitigating anthropogenic CO<sub>2</sub> in atmosphere which is caused by the use of fossil fuels. Among the geological formations for CO<sub>2</sub> sequestration, saline aquifers are considered as a promising option because saline aquifers have larger storage capacity of CO<sub>2</sub> than other formations and accessibility from CO<sub>2</sub> sources. In terms of storage safety, saline aquifers are more effective storage sites since structural, residual, solubility and mineralization trapping mechanisms by physical and geochemical interactions of CO<sub>2</sub>-water-rock occur actively than depleted oil and gas reservoirs including mainly structural trap.

When two immiscible fluids flow in porous media, viscous force quantified by mobility ratio and gravitational force by density difference of the fluids are important factors affecting flow regimes which mean behaviors of fluids flow. In order to analyze and describe the fluids flow, dimensionless groups defined by using the viscous and gravitational forces have been studied. Crane et al. (1963) classified flow regimes based on range of the dimensionless groups defined as viscous to gravity ratio and estimated sweep efficiency of oil by water flooding in porous media. One of virtues for using the dimensionless groups is that they allow scaling from field conditions to the laboratory conditions, so that the flow regimes analyzed in the laboratory are

similar to those in the field. The other is that using dimensionless groups reduces the number of parameters affecting immiscible fluids displacement in porous media to be studied effectively. Majority of previous studies investigated the effect of dimensionless groups on oil recovery performance during gravity drainage process (Kulkarni and Rao, 2006; Wood et al., 2008; Jadhawar and Sarma, 2008, Rostami et al., 2010). They mainly investigated the effects of viscous force affected by rate of gas or CO<sub>2</sub> flooding and gravitational force by upward and downward direction of injection, and density change by oil components. In an aspect of CO<sub>2</sub> storage, plume shape of injected CO<sub>2</sub> and ratio of trapping mechanisms were analyzed under the various CO<sub>2</sub> injection rate condition using Gravity number which is the ratio of viscous force to gravitational force of CO<sub>2</sub>-water system (Ide et al., 2007). Kuo et al. (2010) conducted experiments and simulation studies to investigate the effect of gravity and viscous force by changing CO<sub>2</sub> injection rate on flow behavior of injected CO<sub>2</sub> in saline aquifers using Capillary number and Gravity number in homogeneous and heterogeneous systems. However, most of previous studies investigated effect of viscous and gravitational forces independently using dimensionless groups defined by ratio of two forces. Furthermore most of them considered capillary force as constant, and it means characteristics of CO<sub>2</sub> and water, and interaction of the fluids could not be fully analyzed.

In this study, we attempt to consider three forces of gravitational, viscous, and capillary forces, simultaneously, with the proposed dimensionless group to examine more realistic flow behavior of CO<sub>2</sub>, when CO<sub>2</sub> is injected in saline aquifers. By the analysis of the acquired each trapping mechanism from flow behavior as flow regimes, optimum CO<sub>2</sub> injection scheme can be designed for maximizing the solubility and residual trappings as stable mechanisms. Mineralization trapping mechanism is neglected in this study due to its slow process for CO<sub>2</sub> sequestration.

### MODEL DESCRIPTION

CO<sub>2</sub> plume migration was analyzed using GEM-GHG which is a compositional simulator developed by Computer Modeling Group. The simulation model of two-dimensional vertical cross-sectional system was created to consider gravitational, viscous, and capillary forces. The system is for CO<sub>2</sub> storage with closed boundaries on three sides and

one open boundary on the right side for constant pressure boundary condition which makes no pressure effect by CO<sub>2</sub> injection well and favorable CO<sub>2</sub> flow condition. Aquifer size is assumed to 1,000 m in width and 250 m in height. Considering 1,200 m in depth, initial pressure and temperature are set by 11.7 MPa and 50 °C, respectively. Degree of heterogeneity within the aquifer permeability is described by Dykstra-Parsons coefficient, and value of 0.5 for this coefficient is assumed which represents intermediate heterogeneity. Range of aquifer permeability is in 10~90 md and average permeability is 50 md for a heterogeneous system (Fig. 1). In order to take heterogeneity into account in capillary pressure at each grid, Leverett J-function is applied in this model. The aquifer porosity is 0.2 and the properties and initial conditions of the aquifer are shown in Table 1. One vertical well was installed and CO<sub>2</sub> was injected into the left side of system. Completion for injection well in whole of the aquifer pay thickness was implemented to analyze buoyancy and viscous flows of injected CO<sub>2</sub>. CO<sub>2</sub> injection period is set by the time that CO<sub>2</sub> injected into the left side of system flows through the right side of the aquifer. During the migration of CO<sub>2</sub> the types of CO<sub>2</sub> plume were analyzed with variations of CO<sub>2</sub> injection rate and density difference between CO<sub>2</sub> and water. CO<sub>2</sub> sequestration was monitored after 100 years of CO<sub>2</sub> injection which is the running time of simulation.

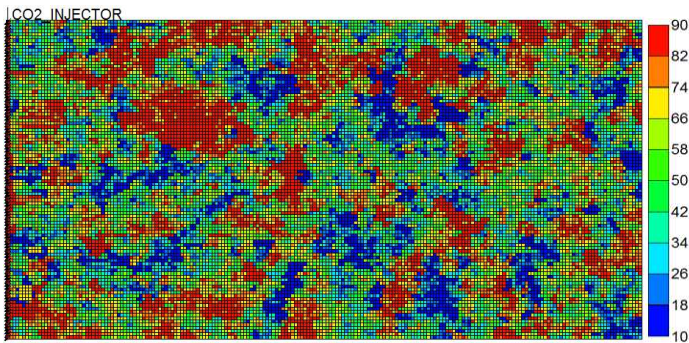


Fig. 1. Permeability distribution of system

Table 1. Properties of simulation model

Parameters	Value
Number of grid	200 * 100 cells
Aquifer size	1,000 * 250 m <sup>2</sup>
Aquifer depth	1,200 m
Aquifer temperature	50 °C
Aquifer pressure	11.7 MPa
Aquifer porosity	0.2
Aquifer permeability	10~90 md (mean 50 md)

To analyze the behaviors of CO<sub>2</sub> flow and sequestration with the conditions of CO<sub>2</sub> injection, CO<sub>2</sub> injection rate for analyzing viscous force and CO<sub>2</sub>-water density difference for analyzing gravitational force were applied for the system. The density difference of CO<sub>2</sub>-water is resulted from changing brine salinity in aquifer. For capillary force between CO<sub>2</sub> and water, interfacial tension of CO<sub>2</sub>-water was considered as the range in following table. These physical and operational simulation parameters and values are summarized in Table 2. Interval of flow rate is 5,000 m<sup>3</sup>/day and injection time of each case are 9.8, 6.4, 5.0, 4.1, 3.5, and 3.2 years, respectively.

Table 2. Simulation parameters

Parameters	Value
CO <sub>2</sub> flow rate	5,000~30,000 m <sup>3</sup> /day
Density difference	0.4~0.8 g/cm <sup>3</sup>
Interfacial tension	0.1~1 dyne/cm

## RESULTS AND DISCUSSION

Considering two phase flow of CO<sub>2</sub> and water when CO<sub>2</sub> is injected into a saline aquifer, relationship of Capillary number ( $N_{Ca}$ ) and Bond number ( $N_{Bo}$ ) is derived for dimensionless capillary pressure term defined as a function of saturation (Dawson and Roberts, 1997). From this derivation, a new dimensionless groups is defined as a linear combination of Capillary number and Bond number ( $N_{gvc}$ ).

$$N_{gvc} = \frac{N_{Ca}}{k_{r(CO_2)}} + N_{Bo} \quad (1)$$

It is assumed that CO<sub>2</sub> is displacing fluid, and water in saline aquifer is displaced fluid, and relative permeability of CO<sub>2</sub> ( $k_r$ ) in Equation (1) is defined as a value at residual water saturation. From the linear combination of Capillary number and Bond number, we analyzed the effects of CO<sub>2</sub> injection rate, CO<sub>2</sub>-water density difference, and interfacial tension of CO<sub>2</sub>-water system through investigating saturation distribution of injected CO<sub>2</sub>. The results for Capillary number, Bond number, and linear combination of those dimensionless group were investigated respectively, using CO<sub>2</sub> saturation distribution for analyzing plume shape of injected CO<sub>2</sub>. Relationship of each dimensionless group with average saturation of the system, and ratio of trapping mechanisms with each dimensionless group are investigated for analyzing condition of storage safety.

We analyzed the results of Capillary number which is the ratio of viscous force for displacing fluid to capillary force. Viscous force by CO<sub>2</sub> injection rate, and capillary force by interfacial tension of CO<sub>2</sub>-water were investigated on migration of injected CO<sub>2</sub> and trapping mechanisms using Capillary number. The result of distribution of CO<sub>2</sub> saturation with CO<sub>2</sub> injection rate is shown in Fig. 2. At the reservoir condition for CO<sub>2</sub> sequestration in this study, density of supercritical phase CO<sub>2</sub> is lower than water in saline aquifer. Although vertical to horizontal permeability ratio in this model is value of 0.1, and it is assumed that completion of injection well is for full pay thickness of the system, CO<sub>2</sub>-water density difference makes buoyancy effect. As CO<sub>2</sub> injection rate decreases, the buoyancy force occurs dominantly. When CO<sub>2</sub> injection rate increases, injected CO<sub>2</sub> migrates more far from the injection well through horizontal flow by viscous force. Because the CO<sub>2</sub> injection period is assumed as the time that CO<sub>2</sub> injected into the injection well in left side of system flows through the right side, and CO<sub>2</sub> mainly migrates through flow paths built in early time of CO<sub>2</sub> injection, displacement of CO<sub>2</sub> to water occurs more favorably when CO<sub>2</sub> injection rate is high.

Distribution of CO<sub>2</sub> saturation at 100 years of monitoring period with capillary force by the change of interfacial tension of CO<sub>2</sub>-water is shown in Fig. 3. We set various interfacial tensions at initial reservoir condition. Interfacial tension of CO<sub>2</sub>-water does not affect plume shape of injected CO<sub>2</sub>, as shown in Fig. 3, and only makes effect on displacing water by CO<sub>2</sub> in narrow and heterogeneous flow paths. Thus interfacial tension of CO<sub>2</sub>-water is a factor affecting the ratio of trapping mechanisms by changing contact area of injected CO<sub>2</sub> with brine.

All the take the results of CO<sub>2</sub> injection rate and interfacial tension of CO<sub>2</sub>-water together, average CO<sub>2</sub> saturation of system with Capillary number is shown in Fig. 4, and percent of each trapping mechanism with Capillary number is summarized in Table 3. As Capillary number increases, average CO<sub>2</sub> saturation of system increases. It can be interpreted as high CO<sub>2</sub> saturated condition is favorable for displacement of CO<sub>2</sub> to water and injected CO<sub>2</sub> more contacts with water. For this reason the amount of CO<sub>2</sub> trapped by residual gas trapping mechanism increases. However, the portion of CO<sub>2</sub> trapped by structural trapping mechanism is also increases due to high CO<sub>2</sub> injection rate. Thus the amount of CO<sub>2</sub> trapped by solubility trapping mechanism relatively decreases. Furthermore if condition of density difference between CO<sub>2</sub> and water changes, displacing force of CO<sub>2</sub> to water also changes so, trend of average CO<sub>2</sub> saturation with Capillary number varies as shown in Fig. 4. It can be interpreted as Capillary number is not sufficient to explain flow behavior, and it is needed to be analyzed with the effect of density difference.

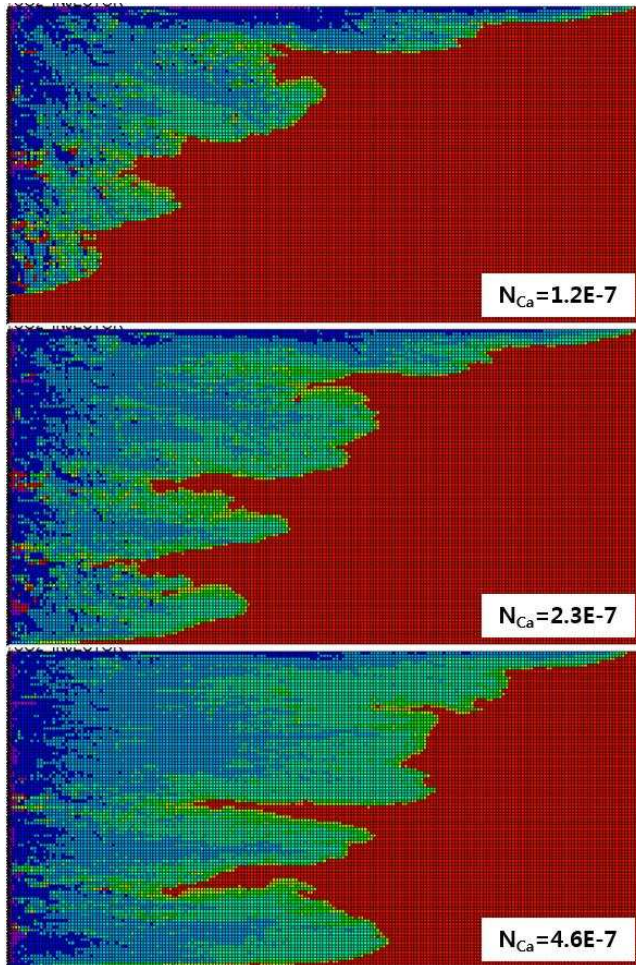


Fig. 2. CO<sub>2</sub> saturation distribution for various CO<sub>2</sub> injection rate

We analyzed the results of Bond number which is the ratio of gravitational force to capillary force between fluids. Gravitational force by density difference of CO<sub>2</sub> and water, and capillary force by interfacial tension of CO<sub>2</sub>-water were investigated for migration of injected CO<sub>2</sub> and trap mechanisms using Bond number. The density difference between CO<sub>2</sub> and water is considered by changing salinity of aquifer system. The result of distribution of CO<sub>2</sub> saturation with density difference between CO<sub>2</sub> and water is shown in Fig. 5. The effect of

interfacial tension of CO<sub>2</sub> and water on distribution of CO<sub>2</sub> saturation is same with the result of Capillary number.

The results of density difference between CO<sub>2</sub> and water by brine salinity and interfacial tension of CO<sub>2</sub>-water are synthesized by average CO<sub>2</sub> saturation of system with Bond number as shown in Fig. 6, and percent of each trap mechanism with Bond number as summarized in Table 4.

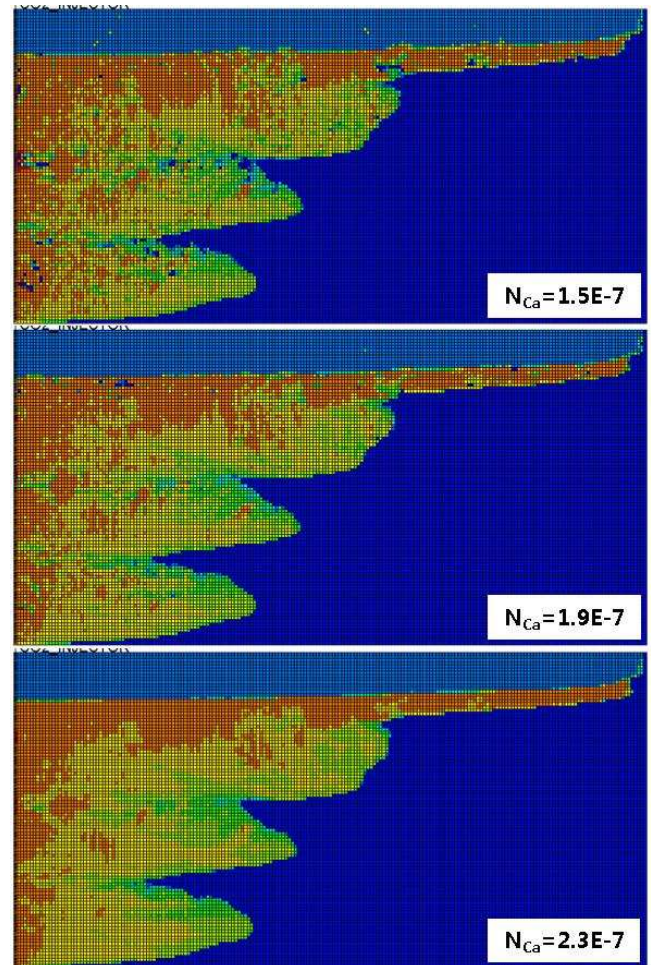


Fig. 3. CO<sub>2</sub> saturation distribution for various CO<sub>2</sub>-water interfacial tension

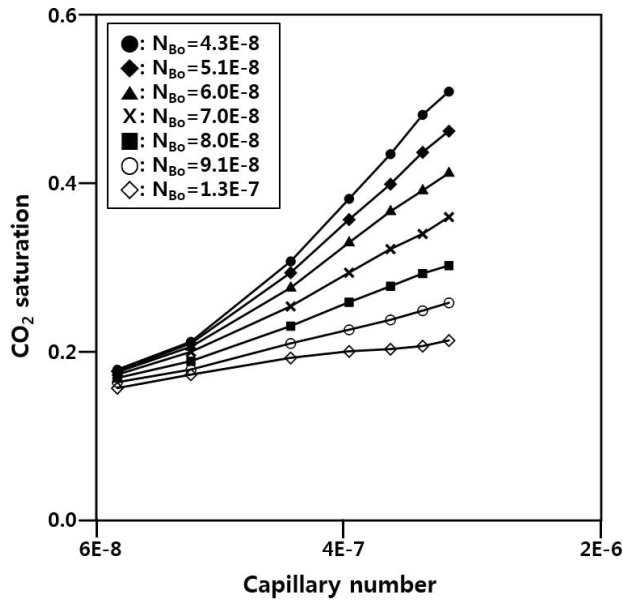


Fig. 4. Average CO<sub>2</sub> saturation with Capillary number

Table 3. The ratio of trap mechanisms with Capillary number

	Capillary number		
	1.2E-7	2.3E-7	4.6E-7
Structural Trapping	24%	26%	30%
Residual Trapping	37%	41%	41%
Solubility Trapping	39%	33%	23%

The average CO<sub>2</sub> saturation of system increases as the Bond number increases. It is expected that the increase in density difference of CO<sub>2</sub> with water, and injecting condition that injection period is assumed to the time injected CO<sub>2</sub> into the left side of system flows through the right side make more dominant buoyant flow. However, change of brine salinity affect not only density difference between CO<sub>2</sub> and water but also CO<sub>2</sub> solubility condition into the water. Thus CO<sub>2</sub> flow behavior as gaseous phase of CO<sub>2</sub> is varied by CO<sub>2</sub> solubility condition. This is why the amount of CO<sub>2</sub> trapped by solubility trapping mechanism decreases, and portion of CO<sub>2</sub> trapped by residual gas trapping mechanism increases due to lower solubility condition and larger contact area of CO<sub>2</sub> with water as brine salinity increases. As shown in Fig. 6, trend of average CO<sub>2</sub> saturation with Bond number varies by CO<sub>2</sub> injection rate. It can be interpreted as Bond number is also not sufficient to explain fluids flow behavior fully, that Bond number does not consider the viscous force effect.

As a result of this study, using each dimensionless group, Capillary number and Bond number, is insufficient to obtain a satisfactory correlation with flow behavior of injected CO<sub>2</sub> into saline aquifers. Thus, linearly combined dimensionless group of Capillary number and Bond number from flow equation of CO<sub>2</sub> and water is needed which combines the effect of all the three forces as shown in Fig. 7. The average CO<sub>2</sub> saturation has universal relationship with derived dimensionless group.

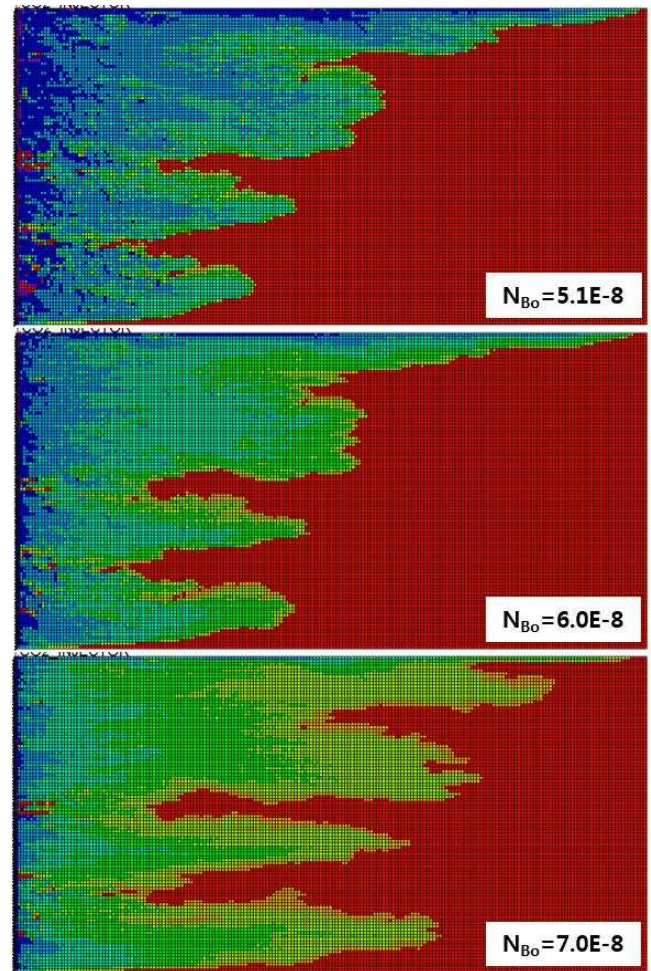


Fig. 5. Distribution of CO<sub>2</sub> saturation with density difference of CO<sub>2</sub> and water

Table 4. The ratio of trap mechanisms with Bond number

	Bond number		
	5.1E-8	6.0E-8	7.0E-8
Structural Trapping	26%	29%	33%
Residual Trapping	41%	44%	47%
Solubility Trapping	33%	27%	21%

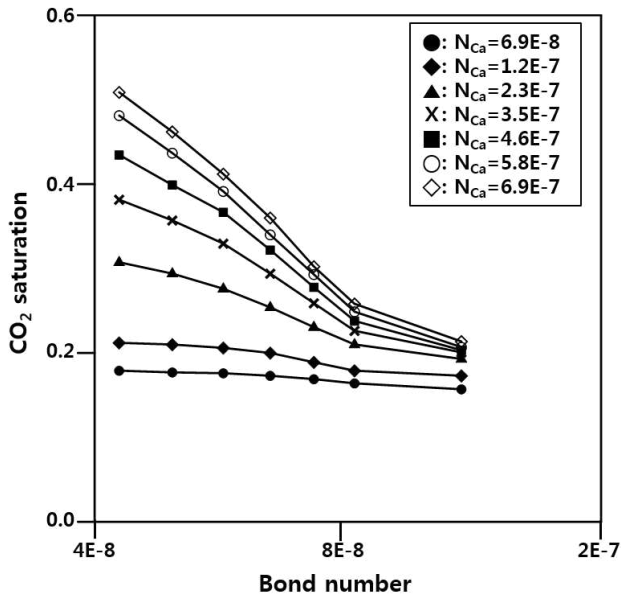


Fig. 6. Average CO<sub>2</sub> saturation with Bond number

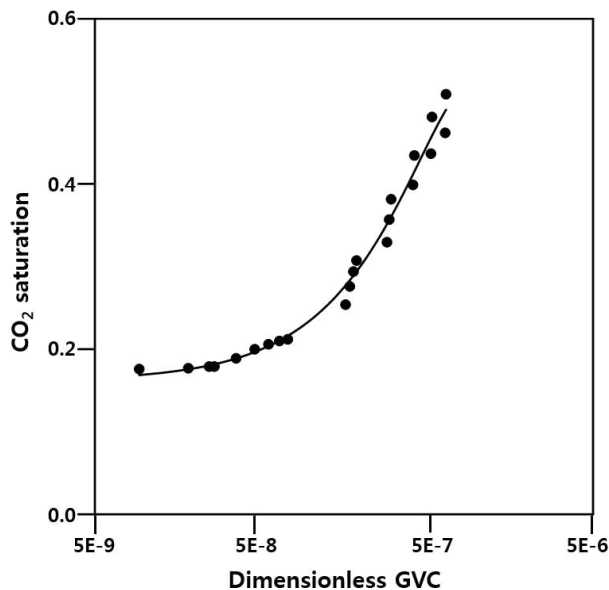


Fig. 7. Average CO<sub>2</sub> saturation with derived dimensionless group, Dimensionless GVC.

## CONCLUSIONS

Numerical simulations were conducted to investigate the effect of viscous, gravitational, and capillary forces between CO<sub>2</sub> and water on behavior of injected CO<sub>2</sub> in saline aquifers for CO<sub>2</sub> sequestration. By using the linearly combined dimensionless group of Capillary number and Bond number, physical and operational parameters were analyzed for CO<sub>2</sub> plume and trap mechanisms. From the simulation result in this study, using of each dimensionless group alone is insufficient to obtain a satisfactory correlation with flow behavior of injected CO<sub>2</sub> into saline aquifers. With the proposed dimensionless group, we could consider two variables of density differences and CO<sub>2</sub> injection rates

simultaneously, that is, three forces considering at the same time, more realistic CO<sub>2</sub> flow behavior would be analyzed.

## ACKNOWLEDGEMENTS

This work was supported by the Energy Efficiency & Resources of the Korea Institute of Energy Technology Evaluation and Planning (KETEP) grand funded by the Korea government Ministry of Trade, Industry & Energy (No. 20132010201760).

## REFERENCES

- Crane, FE, Kendall, HA, and Gardner, GHF (1963). "Some experiments of the flow of miscible fluids of unequal density through porous media," SPE journal, 3(4), 277-280.
- Dawson, HE and Roberts, PV (1997). "Influence of viscous, gravitational, and capillary forces on DNAPL saturation," Ground water, 35(2), 261-269.
- Ide, ST, Jessen, K, and Orr, FM (2007). "Storage of CO<sub>2</sub> in saline aquifers: Effects of gravity, viscous, and capillary forces on amount and timing of trapping," International journal of greenhouse gas control, 1(4), 481-491.
- Jadhavar, PS and Sarma, HK (2008). "Scaling and sensitivity analysis of Gas-oil Gravity Drainage EOR," Proc SPE Asia Pacific Oil and Gas Conference and Exhibition, Perth, SPE.
- Kulkarni, MM and Rao, DN (2006). "Characterization of Operative Mechanisms in Gravity Drainage Field Projects Through Dimensionless Analysis," Proc SPE Annual Technical Conference and Exhibition, San Antonio, SPE.
- Kuo, CW, Perrin, JC, and Benson, SM (2010). "Effect of gravity, flow rate, and small scale heterogeneity on multiphase flow of CO<sub>2</sub> and brine," Proc Western North America regional meeting, Anaheim, SPE.
- Rostami, B, Kharrat, R, Pooladi-Darvish, M, and Ghotbi, C (2010). "Identification of Fluid Dynamics in Forced Gravity Drainage Using Dimensionless Groups," Transport in Porous Media, 83(3), 725-740.
- Wood, DJ, Lake, LW, Johns, RT, and Nunez, V (2008). "A Screening Model for CO<sub>2</sub> Flooding and Storage in Gulf Coast Reservoirs Based on Dimensionless Group," SPE Reservoir Evaluation & Engineering, SPE, 11(3), 513-520.