

IMPACT OF SOCIAL AND HUMAN CAPITAL ON BUSINESS PERFORMANCE OF MIGRANT ENTREPRENEURS – A COMPARATIVE DUTCH–US STUDY

Peter Nijkamp
Dept. of Spatial Economics
VU University
Amsterdam
pnijkamp@feweb.vu.nl

Roger Stough
School of Public Policy
George Mason University
Fairfax Virginia
rstough@gmu.edu

Mediha Sahin
Dept. of Spatial Economics
VU University
Amsterdam
msahin@feweb.vu.nl

Abstract

The past decades have shown a remarkable growth in entrepreneurship among migrants. Recent studies on ethnic entrepreneurship have pointed at an increasing share of migrants in urban small- and medium-sized entrepreneurial businesses. These migrant activities are crucial to the urban economy in many countries, as they employ a significant part of the workforce. This paper aims to identify the empirical factors that are responsible for successful migrant entrepreneurship, using concepts from social and human capital theory. We first offer an overview of some basics from the literature on social capital and human capital, and next a general background sketch of ethnic entrepreneurship in the EU and US. Then we position these concepts in a multicultural framework, in which new socio-cultural conditions such as the emergence of migrant entrepreneurship play an important role. The empirical part of the paper is based on a survey questionnaire among migrant entrepreneurs in Amsterdam (the Netherlands) and Fairfax (USA). We investigate success conditions of ethnic entrepreneurship in both areas and present an overview of cultural, ethno-psychological and motivational aspects that contribute to the understanding of similarities and differences between ethnic entrepreneurs in the Netherlands and the US. This analysis is structured around several dimensions of social and human capital including personal and business characteristics, and network participation for improving business performance. The findings of the two studies are compared to explore a possible correspondence in business performance patterns. The research tool used to assess performance is Data Envelopment Analysis (DEA), a technique for comparative efficiency analysis in various types of corporate organizations. Finally, concluding remarks are presented and possible extensions of the analysis are suggested.

Key words: Data Envelopment Analysis, migrant entrepreneurship, social and human capital

JEL classification codes: L 26, R 11

Pn296msrs

1. Entrepreneurial Regions in Motion

This paper is concerned with the performance conditions of ethnic (or migrant) entrepreneurship. Ethnic entrepreneurship has in the past years become an important feature of business life in urban areas. Its performance and successes are often ascribed to specific characteristics of migrant entrepreneurs (e.g., socio-cultural networks, community sense). It is increasingly recognized that the wealth and progress of multicultural urban regions is not only influenced by an efficient usage of traditional production factors, but also – and in particular – by social and human factors (Putnam, 2000). This has prompted in recent years much research on both social capital (e.g., economic synergy through open multi-actor networks, cooperative modes of initiatives among stakeholders and business actors) and human capital (e.g., motivational incentives, leadership style, locus of control). Our paper addresses in particular the latter two categories as critical success factors for enhanced business performance in multicultural entrepreneurial regions, especially urban areas.

We first offer an overview of some basics from the literature on social and human capital. Then we position these concepts in a general framework on modern regional/urban development, in which changing labour market conditions (with a multicultural dimension) and new entrepreneurship conditions (in particular, the emergence of urban/regional migrant entrepreneurship) play an important role. There is an abundance of literature on entrepreneurship (see for recent surveys by Audretsch and Thurik 2001, Hébert and Link 1989, Lumpkin and Dess 1996, and Wennekers and Thurik 1999). Creativeness, risk-taking behaviour, courage, technological and market knowledge as well as human and social capital and skills are usually regarded as important driving forces for successful entrepreneurship. In addition, various conceptual perspectives have been adopted to study ethnic entrepreneurship (Menziez et al. 2006) and recent studies appear to focus attention in particular on social, human and financial capital theory. For example, Butler and Green (1997) highlight the importance of a community dimension inherent in the business creation process and the significant contributions of community resources to the entrepreneurial performance of group members. In countries like the Netherlands and the US migrant entrepreneurship has proven to be an efficient means of socio-economic integration contributing significantly to the overall economic growth and development of the area concerned (Golik and Teder 2006).

This paper next addresses in particular ethnic entrepreneurship as a major force field in the SME sector in many contemporary urban areas. The social and human capital factors involved are given due attention. This is followed by two empirical studies – one from the Netherlands

and one from the USA – which are presented to highlight the impact of social and human capital on business performance.

2. Social and Human Capital

Regional development is the outcome of socio-economic processes and decisions, in particular the intelligent combination of various production factors and local resources which are decisive for the productivity-enhancing potential of the business sector. The search for appropriate explanatory frameworks for strong business performance has uncovered in recent years an increasing interest in the contribution of ‘social capital’ to urban or regional development. Social capital was defined by Bourdieu (1986) as follows: *”Social capital is an attribute of an individual in a social context. One can acquire social capital through purposeful actions and can transform social capital into conventional economic gains. The ability to do so, however, depends on the nature of the social obligations, connections, and networks available to you”* (p. 243). Social capital can assume different forms such as social skills, charisma, cooperative nature, or care for others which may create various benefits for the individual or his/her social environment. They are essentially a form of social externalities with positive revenues for most if not all actors involved (see Glaeser et al. 2000, Sobel 2002). Social capital is thus a productive resource at the interface of individual and collective interests (see Dasgupta and Serageldin 1999, Putnam 2000), and serves as an intangible (often hidden) source of well-being in an individualistic modern society.

Social capital is essentially based on the notion of community trust (see Fukuyama 1995) as introduced in the urban planning literature several decades ago by Jane Jacobs (1961). But it has emerged recently in a new form as a productive factor that may stimulate regional (or urban) development. Research from this perspective by Westlund and Bolton (2003) and Westlund and Nilsson (2005) concludes that social capital has several manifestations as:

- Capital in an economic sense (with a productivity-enhancing potential, with a blend of supporting factors, with accumulation and depreciation features, with a mix of private and public goods characteristics, and with various spatial and group levels);
- A generator of producer surplus (with a quality-generating potential, with an area-specific social benefit and with a decline in transaction costs); and,
- A facilitator of entrepreneurship (with a combination of skills, risk-taking attitude, market insights, and goodwill trust).

There is convincing evidence that social capital plays a prominent role in a networked society, where reliability, trust, standardization and efficient inter-actor operations are the keys to success and competitive performance (Sobel, 2002). Socio-economic interaction in networks and

confidence and trust among network actors are closely related phenomena (see also Dyer 2000). In addition, during recent decades, considerable attention has been paid to the relationship between self-employment and social capital. Family-based social capital in the form of mutual obligation and trust encourages highly motivated and cooperative group efforts in the pursuit of common objectives (see Sanders and Nee 1996).

There has been a rapidly rising volume of studies on social capital and trust, from the side of both economists and sociologists (see also Chou 2006). Unfortunately, the number of applied studies where trust and social capital are operationalized is disappointingly low. There is clearly a much needed scope for original empirical research on social capital, in particular in the context of regional development where local resources such as social capital appear to play a highly prominent role. Empirical research on the significance of social capital is once more warranted, as differences in social capital among regions may contribute to widening spatial disparities.

Furthermore, social capital is often defined in terms of trust, information flows, and norms between individuals, both inside and outside a business, and has been categorized into structural, relational, and cognitive dimensions (see Nahapiet and Ghoshal 1998, De Carolis and Saporito 2006). Social capital factors that have been found or proposed to affect new venture performance (both positively and negatively) include interaction with local (see Mueller 2005, Bates 2003) and foreign business networks (Prashantham 2006).

In the context of our study on migrant entrepreneurs we may interpret social capital as the set of facilitating network factors that include the use of co-ethnic markets, co-ethnic suppliers and employees, community sources of capital, advice and information, as well as membership in ethnic community organizations. The literature claims that the benefits derived from belonging to a particular ethnic group and the use of the associated networks greatly enhance the start-up and continuing business success of an ethnic business (Adler and Kwon, 2002, Menzies et al. 2003, Dyer and Ross 2000, Boubakri 1999, Iyer and Shapiro 1999, Werbner 1999, Dhaliwal 1998, Teixeira 1998, Deakins et al. 1997, Ram 1994, Peterson and Roquebert 1993, Waldinger 1988, Aldrich and Zimmer 1986, Light 1984, Bonacich et al. 1976). It is noteworthy that social capital also contributes to human capital. Human capital includes education, experience, the influence of the family influence, and age (Becker 1975, Oort and Atzema 2004).

For decades researchers have been interested in discovering what motivates individuals to create new ventures. The vast majority of studies have focused on personality theories or traits. These researchers wondered if there were certain personal traits that predispose an individual for entrepreneurial action and success. There is also a large literature on factors affecting performance of new ventures. Cooper (1993) proposed a model that includes social capital and human capital (based on Becker 1975) of the entrepreneurial environmental conditions, founding processes and initial firm characteristics, and in which entrepreneurial characteristics and

environmental conditions influence founding processes and initial firm characteristics. All these factors are seen to affect business performance. The literature offers ample evidence of the importance of human capital, in the pursuit of self-employment (Sanders and Nee 1996). According to Sanders and Nee (1996) human capital refer to possession of skills, work experience, knowledge, and other useful characteristics (e.g., motivational incentives, leadership style, locus of control) that facilitate self-employment. Human capital factors that in recent studies have been found to affect new venture performance include age, gender, ethnicity (Cooper et al. 1994), education (Shepherd et al. 2000, Lee and Lee 2004, Lee and Chang 2005), relevant industry experience (Baum et al. 2001, Kakati 2003, Florin et al. 2003, Lee and Chang 2005) and general management experience (Brown and Hanlon 2004).

Human capital such as education and language proficiency enable immigrants to effectively deal with a range of challenges. Some scholars have claimed that the success of entrepreneurs can be attributed to their superior human capital rather than to business ownership (Sanders and Nee 1996, Borjas 1990). Bates (1994a, 1994b) has shown that human capital resources are positively related to business longevity and profits. Ethnic entrepreneurs with a higher educational qualifications appear to have greater chances for success (Basu 1998, Bates 1994a, 1994b, Birley and Ghaie 1992). However, other studies find that higher education leads to a lower chance for becoming self-employed (Menzies et al. 2003, Mesch and Czamanski 1997, Evans 1989).

In the remainder of this paper, we investigate the critical success conditions (and failure conditions) that are decisive for the economic performance of migrant entrepreneurs in the service sector in two urban regions, viz. the Greater Amsterdam Area (the Netherlands) and Fairfax County (Virginia)¹. Before we embark on the database employed in our study (Section 4), we offer a sketch of migrant entrepreneurship in both the Netherlands and the USA (Section 3).

3. Immigrants and Entrepreneurship: Dutch and US Evidence

3.1 Ethnic entrepreneurship on the move

Entrepreneurship among migrants is on the rise worldwide. More and more migrants are deliberately choosing self-employment. They are even more likely to be self-employed than natives. For example, in the US, migrants are over-represented among self-employed workers (Tanaka and Krishnan 2006). Entrepreneurship is crucial to economic growth and urban regional

¹ The population size of the Greater Amsterdam Area is well above one million, while this area is part of the Dutch Randstad with some 5 to 6 million people. Fairfax County has a population in excess of one million and is part of the U.S. National Capital Region which is a market of about 5 million people.

development (Acs and Audretsch 1993, Acs and Armington 2006, Yu and Stough, 2006): entrepreneurship contributes to competitiveness, new jobs, economic growth, and social cohesion.

There are various studies on ethnic entrepreneurship that have identified both failure and success conditions for an ethnic entrepreneur (Baycan-Levent et al. 2003, CEEDR 2000, Choenni 1997, Delft et al. 2000, Greenwood 1994, Masurel et al. 2002, Min 1987, Nijkamp 2003, Sahin et al. 2006, Waldinger et al. 1990, Ward and Jenkins 1984). Others have analysed the relative contribution of immigrants to entrepreneurial activity in their host country (Light and Rosenstein 1995; Kim et al. 2003, Hammarstedt 2001, Levie et al. 2006). The general finding is that in many countries migrants are known to make a disproportionately quantitative contribution to new business activities (Keeble 1989, Keeble and Tyler 1995, Kalantardis and Bika 2006, Levie 2007). Many migrants appear to possess a strong potential and capacity for entrepreneurship. They show particular dynamism in creating enterprises. Exploring ethnic entrepreneurs is thus highly important, for both social and economic reasons. Ethnic entrepreneurship has a social as well as an economic impact on a society's development in both short-term and long-term perspectives (Teder and Golik 2006). Clearly, there are also shadow sides. Ethnic firms are often smaller in size and less successful than mainstream business (Butler and Greene 1997) due to a lack of financial capital, discrimination, language problems, and limited markets, when they remain within the ethnic market (Walton-Roberts and Hiebert 1997, Phizaklea and Ram 1996, Bates 1994a, 1994b, Shin and Han 1990, Torres 1988). Education, capital start-up, previous experience, and parent's occupation (class resources) have been found to be more important in business success than ethnic involvement (Marger 1989), while highly successful entrepreneurs have been found to make less use of social capital (Shin and Han 1990).

Ethnic entrepreneurship research studies are generally based on case studies, surveys with small samples, or utilize secondary databases. Obtaining respondent cooperation is particularly difficult as many ethnic groups members, especially visible minorities, may belong to the 'grey sector' and be less inclined to participate in survey research. While there is a growing literature on different aspects of ethnic entrepreneurship (Levie et al. 2006, Levie 2007), far less research has been conducted on the comparison of the performance of businesses started by migrant entrepreneurs in the EU and the USA. In Subsections 3.2 and 3.3, we offer an overview of migrant entrepreneurs in the Netherlands and the USA, respectively.

3.2 Migrant entrepreneurs in the Netherlands

The Netherlands has a migrant population of over 2,800,000 or 17.4 percent of the total population). Of these, 51.9 percent is composed of first-generation migrants, while 40 percent of the migrants live in the four largest cities (Tillie and Slijper 2006). The influx of migrants and

the selective outflow of natives have induced fast changes in ethnic composition of the four largest Dutch cities, where Surinamese, Antilleans, Turks and Moroccans are the largest migrant minority groups.

The socio-economic characteristics of migrants living in the Netherlands can be summarized as follows: migrants are younger than natives, the proportion of males is higher in the migrant population, migrants are concentrated in four large cities (Rotterdam, Amsterdam, The Hague and Utrecht), the skill levels of migrants is below that of the native population, and their occupational status is below that of natives with comparable skill levels. Finally, migrants have higher rates of unemployment (Brücker et al. 2002).

In 2004, after years of economic recession, the labour market participation among immigrants was only 48 percent, while the unemployment rate among immigrants was 16 percent, three times higher compared to the native Dutch population (Zorlu and Traag 2005). This has prompted an increasing number of immigrants to become self-employed. Since the late 1980s the number of migrant entrepreneurs has increasingly risen in the Netherlands. The number of non-Western entrepreneurs increased from 34,100 in 1999 to 46,900 in 2004, with an average annual increase of 3.8 percent. It is noteworthy that among Western immigrants the number of entrepreneurs increased from 72,700 to 74,500 (0.2 percent annually), whereas among native Dutch the number of entrepreneurs decreased from 819,000 in 1999 to 818,300 in 2004. Thus, there is an increasing trend to become entrepreneur among non-Western immigrants, while there is a decreasing trend to becoming an entrepreneur among Western immigrants and native Dutch. In absolute numbers, the Turks and Surinamese are the largest group of migrant entrepreneurs in the Netherlands (Table 1). However, in the period 1999-2004 the sharpest increase was among Moroccan entrepreneurs, namely 64 percent.

There are considerable differences in the self-employment rates among the different ethnic groups in the Netherlands. Although the hotel and catering sector is still most popular among the older immigrants (first generation), the percentage has declined considerably. Instead, the new generation chooses more often to become active in the business (or producer) services sector which includes finance, insurance, real estate and business related professional services, such as accounting, consulting, marketing, engineering, or design, most of which employ a high share of technical, professional and managerial jobs. The younger group of immigrants (second generation) is predominantly represented in the producer services sector. In 2002, one quarter of this group started its business in this sector. As a result, the sectoral distribution of the younger generation of migrant entrepreneurs has become more similar to the composition of the native Dutch entrepreneurs. According to the study of Dagevos and Gesthuizen (2005), Surinamese and Antillean entrepreneurs are more often active in the producer services than other ethnic groups

(Table 2). Among Turkish entrepreneurs there is a more than average increase of entrepreneurs in the producer services as well.

Table 1. Number of entrepreneurs (x1,000), 1999-2004 (CBS, 2007)

Year	Turks	Moroccans	Netherlands/ Antilles	Surinamese
1999	7.9	2.8	1.5	6.4
2000	9.2	3.3	1.8	7.1
2001	11.0	4.0	2.0	7.8
2002	11.5	4.3	2.1	7.9
2003	11.9	4.4	2.2	8.0
2004	11.8	4.6	2.1	7.7

Table 2. Sectoral distribution among non-Western immigrant entrepreneurs, 2004 (in percentages) (Dagevos and Gesthuizen, 2005)

	Turks	Moroccans	Surinamese	Antilleans
Agriculture / fishing	4	2	0	1
Industry	5	2	3	3
Building industry	7	6	6	12
Trade and reparation business	6	6	3	2
Wholesale	9	7	11	10
Retail trade	19	26	15	11
Hotel and catering industry	20	17	9	6
Transportation, storage and communication	6	8	6	3
Financial institutions	1	0	2	1
Real estate	1	1	3	1
Producer services / business to business	16	14	24	30
Other services	6	11	18	19

3.3 Migrant entrepreneurs in the United States

Self-employment in the US increased annually by 3.7 percent, from 9,926,000 in 2002 to 10,295,000 in 2003 (Richtmyer 2002). Small- and medium-sized entrepreneurial businesses are vital to the US economy, as they employ more than half of the private sector workforce. Recent decades have experienced a large growth in entrepreneurship among migrants in the US. They have shown higher rates of entrepreneurship compared with the US born population (Torre 1997, Light 1984). In 1997, there were 615,200 minority-owned businesses in the US that, generated 87.4 percent of the total minority-owned business revenue of \$591.3 billion. There were 1,199,900 Hispanic-owned businesses; 823,500 Black-owned businesses; 913,000 Asian-owned businesses; and 197,300 Native American-owned businesses in 1997. In the State of Virginia, self-employment increased by 12.4 percent, from 186,884 in 2002 to 210,013 in 2003. In 1997, there were 14,300 minority-owned businesses, and they generated 87.4 percent of the total minority-owned business revenue of \$10.2 billion in Virginia. There were 13,700 Hispanic-

owned businesses; 33,500 Black-owned businesses; 22,400 Asian-owned businesses; and 3,300 Native American-owned businesses (Richtmyer 2002). In short, this data suggests the disproportionately large participation in business development on the part of minority and ethnic groups of which a significant part are immigrants.

Table 3 shows that migrants own about 15 percent of total firms in the US, with Hispanics, Asians, Blacks, and American Natives owning 6 percent or less of the firms (Richtmyer 2002).

Table 3. Firms by race and ethnic origin

	Number of firms	Percentage of firms
Total US firms	20,821,934	100
Non-minority firms	17,782,901	85.40
All Minority firms	3,039,033	14.60
Black-owned	823,499	3.96
Hispanic-owned	1,199,896	5.76
American Native-owned	197,300	0.94
Asian-owned	912,959	4.38

Note: The percentages may not sum to 100, because Hispanics may be of any race and may therefore be double counted

Source: Table derived from Richtmyer (2002), US Department of Commerce, Bureau of the Census, SMBO, 1997.

Table 4 shows the percentage of minority-owned businesses by major industry. The Asian-owned firms are strongly represented in the services and retail industries. Hispanic-owned firms are concentrated in construction, retail, services, and unclassified. Blacked-owned firms are very similar to all firms, while native American-owned businesses are strongly represented in the unclassified, services and construction industries.

Table 5 shows the number of firms for the period 1982 - 1997. During this period minority-owned firms grew at a rate of 55 percent compared to nonminority-owned firms' rate of 11 percent; in 1987-1992, minority-owned firms showed a 68 percent growth rate compared to a growth rate of non-minority-owned firms of 22 percent; and in 1992-1997, minority-owned firms continued to grow at a rate of 30 percent compared to nonminority-owned firms' rate of four percent. In sum, minority-owned firms grew at much higher rates than majority-owned firms.

There are great variations in the self-employment rates of different immigrant and ethnic groups in the USA. Research does not support a consensus in arguments for this variation, with some proposing that immigrant communities are themselves differential sources of entrepreneurial energy and others suggesting that it is the result of the human and/or financial capital of individual immigrants. Ethnic differences among entrepreneurs' motivations can vary from one location to another, and depend on social class differences, opportunity structures, and ethnic group relations in a particular location. Statistical analyses conducted by Yuengert (1995)

suggest that 62 percent of the varying immigrant self-employment business participation rates in the US may be explained by two rather more sophisticated features of immigrant communities. Immigrants from countries with high self-employment rates have higher than average self-employment rates in the U.S., perhaps because they are more likely to be experienced business people. Also, immigrants tend to concentrate in states with progressive tax and regulatory codes, which may act as incentives to pursue self-employment, with its greater opportunities for tax avoidance (Aronson 1997).

Table 4. Percentage of minority-owned firms by industry, 1997

Major industry	Total (%)	Black (%)	Hispanic (%)	American native (%)	Asian (%)
All		3.95	5.76	0.95	4.38
Agriculture	2.38	1.51	3.34	4.53	1.42
Mining	0.61	0.03	0.16	0.48	0.07
Construction	11.21	6.86	12.72	13.91	3.04
Manufacturing	3.31	1.27	2.13	3.40	2.55
Transportation	4.42	8.69	7.05	3.19	4.11
Wholesale	3.83	0.99	2.62	2.21	5.52
Retail	13.87	10.63	12.92	7.49	21.43
Finance	10.75	4.61	4.72	2.34	7.53
Services	42.70	53.14	41.71	17.31	44.47
Unclassified	7.11	12.28	12.66	45.23	9.91

Note: A large number of unclassified businesses within the Native American group may be gambling businesses (Minorities in Business, 2001).

Source: Table derived from Richtmyer (2002)

Table 5. Growth in numbers of minority-owned firms (1982-1997)

	Number of firms				Growth rates (%)		
	1982	1987	1992	1997	'82-'87	'87-'92	'92-97
All US firms	12,059,950	13,695,480	17,253,143	18,431,456	14	26	7
Nonminority firms	11,234,999	12,419,170	15,103,959	15,645,358	11	22	4
All Minority firms	824,951	1,343,910	2,149,184	2,786,098	55	68	30
Black-owned	308,260	424,165	620,912	780,770	38	46	26
Hispanic-owned	284,01	489,973	862,605	1,121,433	73	76	30
American Native-owned	17,100	24,931	102,271	187,921	46	310	84
Asian-owned	240,806	414,340	603,426	785,480	72	46	30

Source: Table derived from Richtmyer (2002) U.S. Small Business Administration, Office of Advocacy, based on data from the U.S. Department of Commerce, Bureau of the Census, Survey of Minority-Owned Business Enterprises, Company Statistics Series 1982, 1987, 1992, and 1997.

Several scholars claim that migrants are more likely to express a desire and to try starting a business than natives, but are also more likely to fail (Kollinger and Minniti 2006). Studies in the US show that migrant entrepreneurs tend to have less personal funds available at start-up and are

less likely to seek funding from formal sources than non-minority entrepreneurs. Studies on migrant entrepreneurship in the US rank the groups by the percent age of owners, by estimated employees, or by ethnic traits (Koreans, Asians, Indians, Japanese, Cuban, Chinese, Vietnamese, Filipino, Mexican, Puerto Rican, African Americans and Hawaiian; see Light and Gold 2000). According to Portes and Zhou (1992) and Light and Roach (1996), self-employed Cuban, Chinese, and Japanese and Korean entrepreneurs received higher incomes than their salaried co-ethnics in the general market. According to Bates (1994a), the high level of success of Koreans in the US vis-à-vis others is due to their educational levels and personal wealth or access to resources.

Asians are the most educated racial group in the US (Robb and Fairlie 2007). Related to family business background of the owner, marriage is associated with business success. Spouses may provide financial assistance, paid or unpaid labour for the business, health insurance coverage, and other types of assistance useful for running a business (Robb and Fairlie 2007). Financial and human capital contribute to the relative success of Asian businesses (Robb and Fairlie 2007). According to Robb and Fairlie (2007), Asian-owned businesses are more successful than white-owned businesses for two main reasons; Asian owners have high levels of human capital and their businesses have substantial start up capital. Bates (1994a) argues that Vietnamese business owners rely on co-ethnic customers and employees, but Asian business owners in general rely less on their co-ethnic group.

In the United States, migrants from India tend to dominate in the low-budget hotel business, Koreans specialize in retail businesses and Chinese run restaurants. Often, migrant entrepreneurs take over businesses that natives are leaving. In the United States an increasing number of farms are owned by Hispanic and Asian migrants, at a time when many older, native-born farmers are leaving farming altogether (Aronson 1997).

Bates' (1994a) comparative studies of Korean immigrant-owned businesses with African American and non-minority owned businesses suggest that human and financial capital – and not social capital alone – are the key determinants of business activity. Korean entrepreneurs are more likely to have college degrees and more likely to have invested substantial personal assets in their businesses; their financial returns, however, tend to be significantly below those of African-American entrepreneurs, suggesting that the Koreans turned to self-employment because they faced barriers entering the labor market (Aronson 1997). Access to capital, networking, training, and support services are challenges that immigrant entrepreneurs often face. Immigrants need literacy, and job-training programs. All immigrant entrepreneurs with limited English proficiency bring home lower earnings than those with greater proficiency.

As a final caveat, it might to be recognized that the Netherlands and the USA have a different migration history, but in both countries migrant entrepreneurship is showing strong

growth. We will describe the methodology for our empirical research and the empirical data base used to identify the importance of social and human capital factors in the next part of the paper.

4. Methodology and Data Base

4.1 Research Approach

Our study aims primarily to investigate the similarities and differences between ethnic entrepreneurs in the Greater Amsterdam Area (the Netherlands) and in Fairfax County (Virginia, USA), in terms human and social capital described above. Figure 1 shows an analysis framework for empirical research that maps out how the social and human capital elements are related to entrepreneurship.

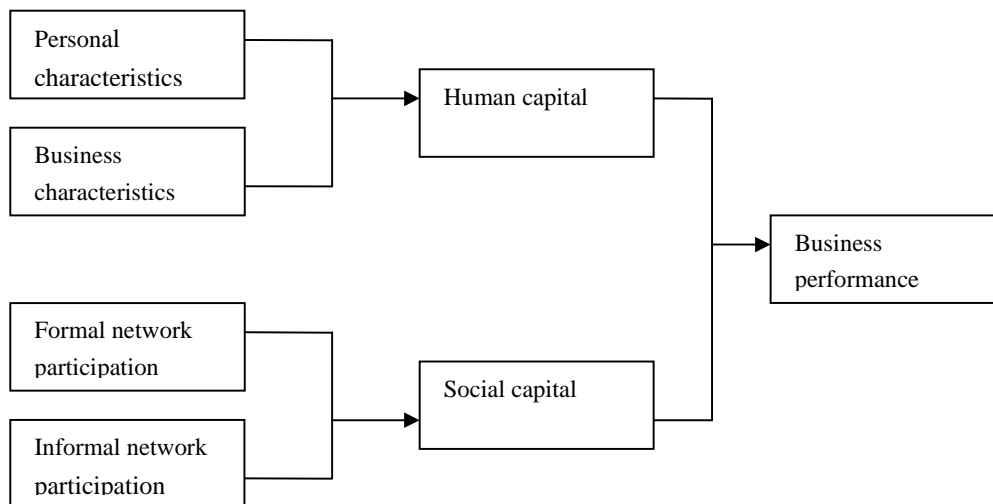


Figure 1. Entrepreneurial performance as a result of human and social capital

We will now empirically test the explanatory profile composed of three main constructs: social capital (e.g. network participation, other relatives as entrepreneur), human capital (personal and business characteristics), and business performance. To that end, we conducted a questionnaire for ethnic entrepreneurs in both Amsterdam and Fairfax. The questionnaires contain personal information questions (e.g., demographic and socio-economic data), but also questions pertaining to –motivation, business performance, socio-cultural network participation, financial and market and evaluation questions. From the full set of questions, we have selected those which may be interpreted as indicators for the input factors of the production system of each migrant entrepreneur, as well as questions which may be seen as typical for the

performance of the firm concerned (see also Sahin et al. 2007). The following input and output indicators were selected (see Table 6).

Table 6. Input and output indicators of migrant entrepreneurs

INDICATORS							
Input					Output		
PC	SE	IS	ES	LS	MS	GT	PT
Need for achievement	Number of full-time employees	Commitment	Applicable products and services	Negotiation skills	M	G	P
		Culture of enterprise		Communication skills	A	R	R
Locus of control	Number of part-time employees	Administration	Availability of finance	Managerial skills	R	O	O
		Reliability		Customer relationships	K	W	F
		Market knowledge	Expectations of market	Financial knowledge	E	T	I
		Customer service		Market orientation	T	H	T
		Personnel			S	I	
Risk-taking propensity		Quality			H	N	
					A		
					R	T	
					E	U	
						R	
						N	
						O	
						V	
						E	
						R	
Input factors				Output factors			
PC = Personal characteristics (motivation factor)				MS = Market share			
SE = Size of enterprise				GT = Growth in turnover			
IS = Internal success				PT = Profit			
ES = External success							
LS = Learned skills							

The independent variable *personal characteristics*, is constructed from items concerning the need for achievement, locus of control, and risk-taking propensity. This variable consists of 15 items taken primarily from the E-Scan of Driessen and Zwart (NA). The E-Scan is a test for potential entrepreneurs to see if they have the appropriate characteristics to be an entrepreneur. These are used in this study because they are the most frequently investigated and cited characteristics of the entrepreneur found in the literature, and they show a significant relationship with entrepreneurship across several studies (Carland and Carland 1993, Hansemark 1998, Johnson 1990). The independent variable *business characteristic* is constructed from 11 items about business experience, plant experience, innovation, total number of people working in the

enterprise, funding, and items about business strategy. The two clusters of items above are altogether recomputed to one variable using principal components analysis each using the Statistical Package for the Social Sciences (SPSS). During the creation of the main constructs, we performed a reliability analysis to investigate if we could use the constructs for further analysis. We measured these items with Cronbach's alpha and used a critical value of 0.6 or higher (Velde et al. 2000). The values for Cronbach's alpha for both items were sufficient to use in further research on the influence of migrant entrepreneurs on business performance.

In the literature *business performance* is often divided into objective and subjective components of business performance. In our study, business performance refers to the objective criteria: market share, turnover, and profitability (e.g. net and gross profit). Besides these variables, we also included *internal and external success factors*, or attributes, such as productivity, costs, stability, growth, business culture, reliability, market knowledge, employees, quality, price, innovation, products etc. in order to measure the business performance of migrant entrepreneurs. Each attribute is linked to five questions, whereby the respondent answered on a 5-point Likert scale: 'strongly disagree', 'disagree', 'neither agree or disagree', 'agree', 'strongly agree'. Based on their answers, the respondent can score points varying between 5, 4, 3, 2, and 1. Some statements are reverse-scored to minimize response-set bias and the halo-effect. It is noteworthy that some researchers have reported a high internal reliability for these measures (Ho and Koh 1992). For each of the three traits, once all scale scores have been reflected to ensure appropriate alignment for the analysis, a higher score indicates a greater need for achievement, more locus of control, and higher risk-taking propensity. Clearly, 5 points is the highest score per answer, while 1 point is the lowest score per question. The average of the scores is used for each of the variables and constructs. The averages are used in the statistical analyses to investigate differences between migrant groups (see Table 7).

Table 7: Group statistics of characteristics of migrant entrepreneurs in Amsterdam and Fairfax

N= 83	PC* (3.35)			BC* (2.79)			NP* (1.59)			BP* (4.00)		
	TR	MR	SR	TR	MR	SR	TR	MR	SR	TR	MR	SR
N	35	25	23	35	25	23	35	25	23	35	25	23
Mean	3.44	3.39	3.17	2.93	2.69	2.69	1.63	1.48	1.65	4.12	3.95	3.88
Sd	.49	.42	.39	.47	.58	.49	.49	.51	.49	.55	.45	.41
N=42	PC* (3.86)			BC* (3.36)			NP* (1.54)			BP* (1.44)		
	KR	VT	OTR	KR	VT	OTR	KR	VT	OTR	KR	VT	OTR
N	14	5	23	14	5	23	14	5	23	14	5	23
Mean	4.02	3.71	3.79	3.39	3.61	3.29	1.43	1.60	1.59	1.26	1.00	1.64
Sd	0.36	0.27	0.41	0.23	0.49	0.38	0.39	0.42	0.25	0.60	0.00	0.59
PC*: Personal Characteristics							NP*: Network Participation					
BC*: Business Characteristics							BP*: Business Performance					

The sampling was restricted to those enterprises that are owned by migrant entrepreneurs of different ethnic origin in the service sector (e.g. consultancy, accountancy, and tax offices), and the retail sector (e.g. restaurants, beauty salons, etc.). The total sample included 83 respondents of Turkish, Moroccan, and Surinamese origin in the service sector in Amsterdam, and 42 respondents of Korean, Vietnamese and other origin in the service and retail sector in Fairfax. The population was confined to three migrant groups of people in the Netherlands who are originally from Turkey, Morocco and Surinam, and to those migrant groups in the US who are originally from Korea, Vietnam and other countries, because of their size and numbers in the selected sectors.

Our research used survey questionnaires handed out to the respondents. The research questionnaire included open-ended and closed questions to collect the necessary information. The respondents are segmented in our research according to their ethnic origin, viz. Turkish, Moroccan, and Surinamese, Korean, Vietnamese, or different origin. Their ethnic origin is confirmed by the country of birth of the parents, as well as by the individual respondent. The approach was based on personally-supervised assistance in obtaining the various questions and, hence, once an entrepreneur had agreed to participate in this exercise, he/she was normally willing to complete the questionnaire.

4.2 Database on ethnic entrepreneurs in the service sector in the Amsterdam area

Tables 8 and 9 show personal and entrepreneurial characteristics of the relevant group in Amsterdam. In Table 8 we present an overview of the profile of the 83 respondents in the service

sector in Amsterdam and the Pearson Chi-Square (p-value) of the statistical difference among the groups.

Most of the entrepreneurs were between the age of 26-30 (29%) (Table 8). However, this was different for each migrant group. Most entrepreneurs of Turkish origin were between the age of 30-35 (11%), while most of the entrepreneurs of Moroccan origin were between the age of 25-30 (16%), and most of the Surinamese entrepreneurs were between the age of 35-39 (8%). We find a statistical outcome of 0.04 for the Pearson Chi-Square value (see Table 10), so that we may conclude that the entrepreneurs from the three ethnic groups considered do differ significantly from each other regarding their age. From this table, we can also derive that the entrepreneurs from different ethnic origin are mostly male (82%). The Pearson Chi-Square rate in this case amounts to 0.956 (see Table 8), which indicates that there is no significant difference between the three groups investigated. Furthermore, we find that 37% of the respondents (of the total sample) have a high vocational education level. At the university level, 31% of the approached migrant entrepreneurs have a university level diploma. This means that altogether most respondents have a high education level of schooling. When comparing the level of education for the three groups, in particular, we find that in all groups most of the respondents have a high level of vocational education. For example, among the Turkish entrepreneurs 13.3% of the respondents have a high vocational education level, while these figures are 15% for the Moroccan entrepreneurs and 8% for the Surinamese entrepreneurs. However, if we only examine the university education level, we find that most of the respondents of Surinamese origin went to the University and have the highest level of education. The Pearson Chi-Square rate in this case appears to be 0.122 (see Table 10). We may thus conclude that overall the migrant entrepreneurs do not differ significantly from each other in regard to their education level.

26 entrepreneurs of Turkish origin were born in Turkey, 13 of the entrepreneurs of Moroccan origin, were born in Morocco and for the Surinamese entrepreneurs, 12 persons were born in Surinam. The Pearson Chi-Square statistic, in this case is 0.0001 (see Table 10), which indicates that there is a significant difference between the groups in terms of their birth place. Furthermore, a comparison was made between the sample groups regarding their marital status and children. From Table 8, we can conclude that most respondents were married and have one child. Most of the Moroccan and Surinamese entrepreneurs were unmarried, viz. 16% and 18%, respectively. The Pearson Chi-Square rate in this case amounts 0.024 (see Table 10), which indicates that there is a significant difference between the groups regarding their marital status. Most of the Turkish entrepreneurs have 2 children, while most Moroccan and Surinamese entrepreneurs do not have children. The Pearson Chi-Square rate in this case is 0.038 (see Table 10), which indicates that there is a significant difference between the groups.

Table 8. Personal characteristics of migrant entrepreneurs (Amsterdam)

	Number of entrepreneurs	Share in total (%)
Ethnic origin		
Moroccan	25	30
Surinamese	23	28
Turkish	35	42
Age		
20 – 25	11	13
26 – 30	24	29
31 – 35	20	24
36 – 40	15	18
41-	13	16
Gender		
Female	15	18
Male	68	82
Education level		
Secondary school level	11	13
Middle vocational training	12	14
Higher vocational training	30	37
University	26	31
Other	4	5
Marital status		
Unmarried	36	43
Married	39	47
Divorced	7	9
Unknown	1	1
Family status		
With children	42	51
Without children	41	49
Total	83	100

Table 9 shows entrepreneurs in the family by ethnic group. We can see that 58 respondents of different ethnic origin do not have an entrepreneur in the family (70%). This is 22 (26%) among Turkish entrepreneurs, while 21 (25%) among Moroccan entrepreneurs, and 15 (18%) for Surinamese entrepreneurs, respectively. Only 25 (30%) entrepreneurs of different ethnic origin do have an entrepreneur in the family. This is 13 (Turkish entrepreneurs), 4 (Moroccan entrepreneurs), and 8 (Surinamese entrepreneurs), respectively. The Pearson Chi-Square rate amounts to 0.18 (see Table 10), which indicates that there is no significant difference between the groups.

Finally, we investigated the participation level in formal business networks (see Table 9). Most of the Turkish and Surinamese entrepreneurs did not participate in such networks. On the

other hand, 13 of the 25 Moroccan entrepreneurs do participate in such networks. The Pearson Chi-Square rate amounts to 0.4 (see Table10), which indicates that there is no significant difference between the groups in case of formal business network participation.

Table 9. Entrepreneurial characteristics of migrant entrepreneurs (Amsterdam)

	Number of entrepreneurs		Share in total (%)	
	<i>Yes</i>	<i>No</i>	<i>Yes</i>	<i>No</i>
Entrepreneurs in family				
Total sample	25	58	30	70
Entrepreneurs in family by ethnic group				
Moroccans	4	21	16	84
Surinamese	8	15	35	65
Turkish	13	22	37	63
Network participation				
Total sample	31	52	37	63
Network participation of migrant entrepreneurs by ethnic group				
Moroccans	13	12	52	48
Surinamese	7	16	30	70
Turkish	11	24	31	69
Total	83		100	

Trust in migrant networks is a subject worth examining further. For example: why is the participation rate for migrant entrepreneurs relatively low with regard to formal networks such as franchise organizations? Whereas such organizations play an important role for native entrepreneurs, migrant entrepreneurs usually do not participate in this. It can be that ‘trust’ plays a role in this issue, but this is for the time being speculative. We can nevertheless explain the migrant dependency by trust. Clients from the own migrant group play a major role for migrant entrepreneurs. It is possible to reverse this notion and ask ourselves the question: ‘Why do migrant customers prefer a service from the migrant entrepreneur?’ The cause may be in the fact that both share the same language, culture and religion and therefore communicate better. This brings a closer bonding to each other, through which the aspect of ‘trust’ can be understood. Hereby also the migrant entrepreneur can satisfy special needs of these types of customers, since they have a better knowledge than their native peers about specific products, which are appreciated by migrant customers.

Table 10 presents an overview of the profile of the respondents and the Pearson Chi-Square (p-value) of the statistical difference. The Pearson Chi-Square is used here in order to find

out whether there is a statistically significant difference between the selected migrant groups. We will use a reliability level of 95%, which indicates that there is a significant difference when the outcome is below a p-value of 0.05. The groups differ only significantly from each other in terms of their age, birthplace, marital status and children. The corresponding p-values of these variables are contained in Table 10.

Table 10. Pearson Chi-Square values of sample of Dutch migrant entrepreneurs

Variables	Pearson Chi-Square
Age	0.04*
Gender	0.956
Birthplace	0.0001*
Education	1.22
Marital status	0.024*
Children	0.038*
Entrepreneur in family	0.18
Network participation	0.4

*: significant

4.3 Database on ethnic entrepreneurs in the service and retail sector in Fairfax County

Next, we present the profile of ethnic entrepreneurs in Fairfax County. Fairfax County is a county in Northern Virginia, in the US. The estimated population is 1,177,000. A county is a local level of government smaller than a state, that often either contains a city or town and in some cases is an element of a large metropolitan region. In many states, counties are subdivided into townships or towns and may contain other independent municipalities. Fairfax County is home to a wide diverse population from different ethnic origin with a significant number of Korean-Americans, Vietnamese-Americans, Indian-Americans, Jewish-Americans, and Pakistani-Americans and persons of Hispanic origin. According to the census of 2000, there were 73 percent Whites, 9 percent African Americans, 0.5 percent Native Americans, 13 percent Asians, 11 percent Hispanics or Latinos, and 10 percent of other races.

Table 11 shows that most entrepreneurs in Fairfax county are male and between the age of 41-50 (57 percent) and that 57 percent of the respondents have a university education; 57 percent were born in Korea, 24 percent in Vietnam, and 19 percent in other countries. Further, a comparison was made between the sample groups regarding their marital status and children. From Table 11, we can conclude that most respondents were married and have children. The corresponding Pearson Chi-Square rates in Table 13, indicate that there is a significant difference between the groups in terms of their birthplace, education, marital stats, and children. The Pearson Chi-Square outcomes are below a p-value of 0.05.

Table 11. Personal characteristics of migrant entrepreneurs (Fairfax)

	Number of entrepreneurs	Share in total (%)
Ethnic origin		
Korean	14	33
Vietnamese	5	12
Other	23	55
Age		
21 – 30	5	12
31 – 40	12	29
41 – 50	9	45
> 51	6	14
Gender		
Female	20	48
Male	22	52
Education level		
Secondary	4	10
Vocational training	12	28
University	26	62
Marital status		
Unmarried	7	17
Married	33	78
Divorced	2	5
Family status		
With children	33	79
Without children	9	21
Total	42	100

Table 12 shows entrepreneurs in the family by ethnic group in Fairfax; 69 percent of the respondents have an entrepreneur in the family: 58 percent Korean, 80 percent Vietnamese, and 50 percent other, respectively. Most of the entrepreneurs in Fairfax appear to participate in formal business networks. The Pearson Chi-Square rate, in this case amounts to 0.4 (see Table 13), which indicates that there is no significant difference between the groups in case of formal business network participation.

Table 12. Entrepreneurial characteristics of migrant entrepreneurs in Fairfax County

	Number of entrepreneurs		Share in total (%)	
	<i>Yes</i>	<i>No</i>	<i>Yes</i>	<i>No</i>
Entrepreneurs in family				
Total sample	29	13	69	31
Entrepreneurs in family by ethnic group				
Korean	9	5	64	36
Vietnamese	4	1	80	20
Other	16	7	70	30
Network participation				
Total sample	26	16	64	36
Network participation of migrant entrepreneurs by ethnic group				
Korean	11	3	79	21
Vietnamese	3	2	60	40
Other	12	11	52	48
Total	42		100	

The corresponding p-values of the above mentioned variables are contained in Table 13. We used a reliability level of 95%, which indicates that there is a significant difference when the outcome is below a p-value of 0.05.

Table 13. Pearson Chi-Square values of sample of migrant entrepreneurs in Fairfax

Variables	Pearson Chi-Square
Age	0.08
Gender	0.758
Birthplace	0.003*
Education	0.0001*
Marital status	0.0001*
Children	0.0001*
Entrepreneur in family	0.123
Network participation	0.14

*: significant

5. Data Envelopment Analysis of the Performance of Migrant Entrepreneurs

We will now analyze the economic performance of our samples of migrant entrepreneurs. In our empirical assessment we use Data Envelopment Analysis (DEA) to judge the efficiency or performance level of the firms in our sample, for both Amsterdam and Fairfax. DEA has become an established quantitative research tool in efficiency analysis in corporate and other

organizations (see Charnes et al. 1978, Nijkamp et al. 2008). DEA offers a measure of the relative efficiency of each agent considered, using the highest performing agent as a benchmark.

The DEA approach was conducted for each of the two samples: 83 migrant entrepreneurs in Amsterdam and 42 migrant entrepreneurs in Fairfax (the results are given in Figures 2 and 3).

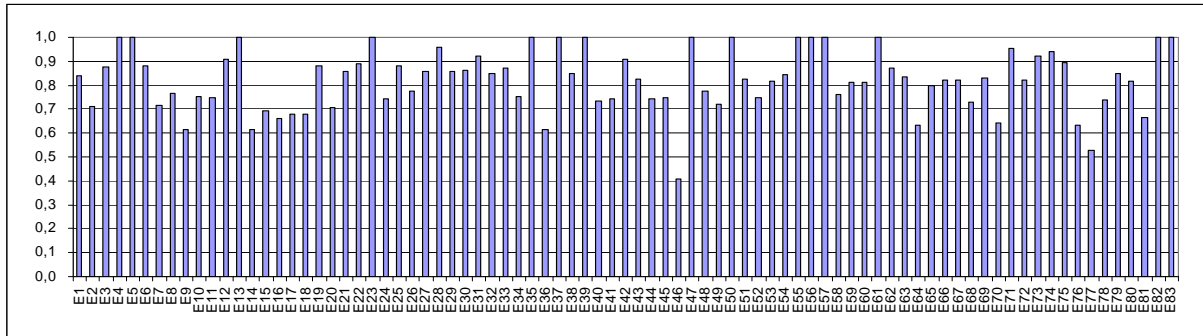


Figure 2. Efficiency score of individual migrant entrepreneurs in Amsterdam

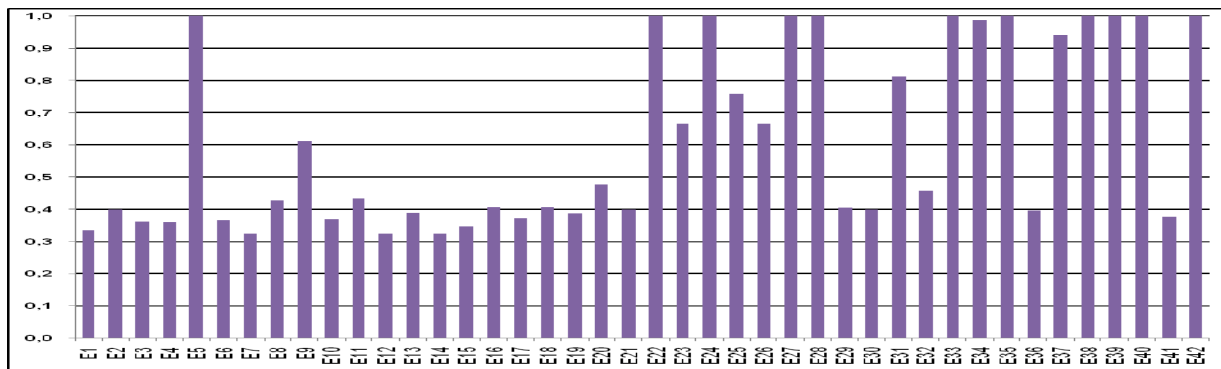


Figure 3. Efficiency score of individual migrant entrepreneurs in Fairfax

Figure 2 shows that 15 of the 83 entrepreneurs in the Amsterdam sample are efficient (they have relative efficiency scores of 1.00, which is maximum possible score). Next, a subdivision of the three migrant categories was carried out, and a DEA analysis was applied to each of the three migrant categories separately in our sample, viz. Turks, Moroccans, and Surinamese. The results are contained in Figure 4, which shows the efficiency scores of the entrepreneurs categorized by ethnic origin. 7 entrepreneurs of Turkish origin, 12 entrepreneurs of Moroccan origin and 5 entrepreneurs of Surinamese origin are efficient in their own group. Furthermore, it is interesting to see that in particular the number of efficient entrepreneurs of Moroccan origin has doubled in this second efficiency analysis categorized by ethnic origin, compared with the first analysis of the 83 entrepreneurs. In their own circle, Moroccan enterprises, according to the DEA analysis, perform well, but if we take the three groups together, the Moroccans perform less well compared to the broader reference group of all companies. Figure 3 shows that 12 of the 42

entrepreneurs in the Fairfax sample are efficient (they have relative efficiency scores of 1.00, which is maximum possible score).

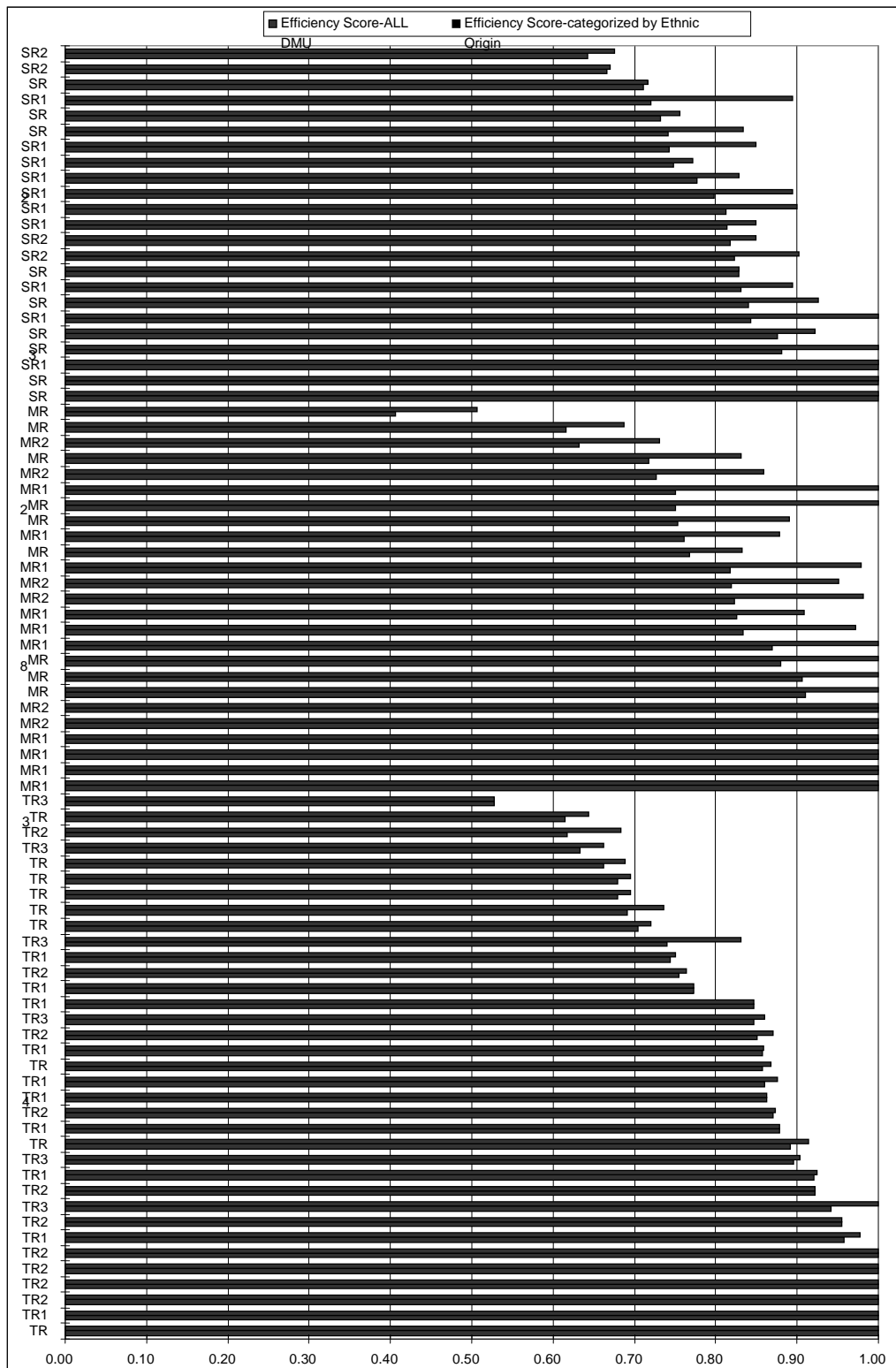


Figure 4. Efficiency score of entrepreneurs categorized by ethnic origin (Amsterdam)

Note: SR = Surinamese, MR = Moroccan, TR = Turkish

The results of the subdivision of the three migrant categories and the DEA analysis in the Fairfax sample are contained in Figure 5. This figure shows the efficiency scores of the entrepreneurs categorized by ethnic origin. 10 entrepreneurs of other origin than Korean and Vietnamese, and one Korean entrepreneur are efficient in their own group.

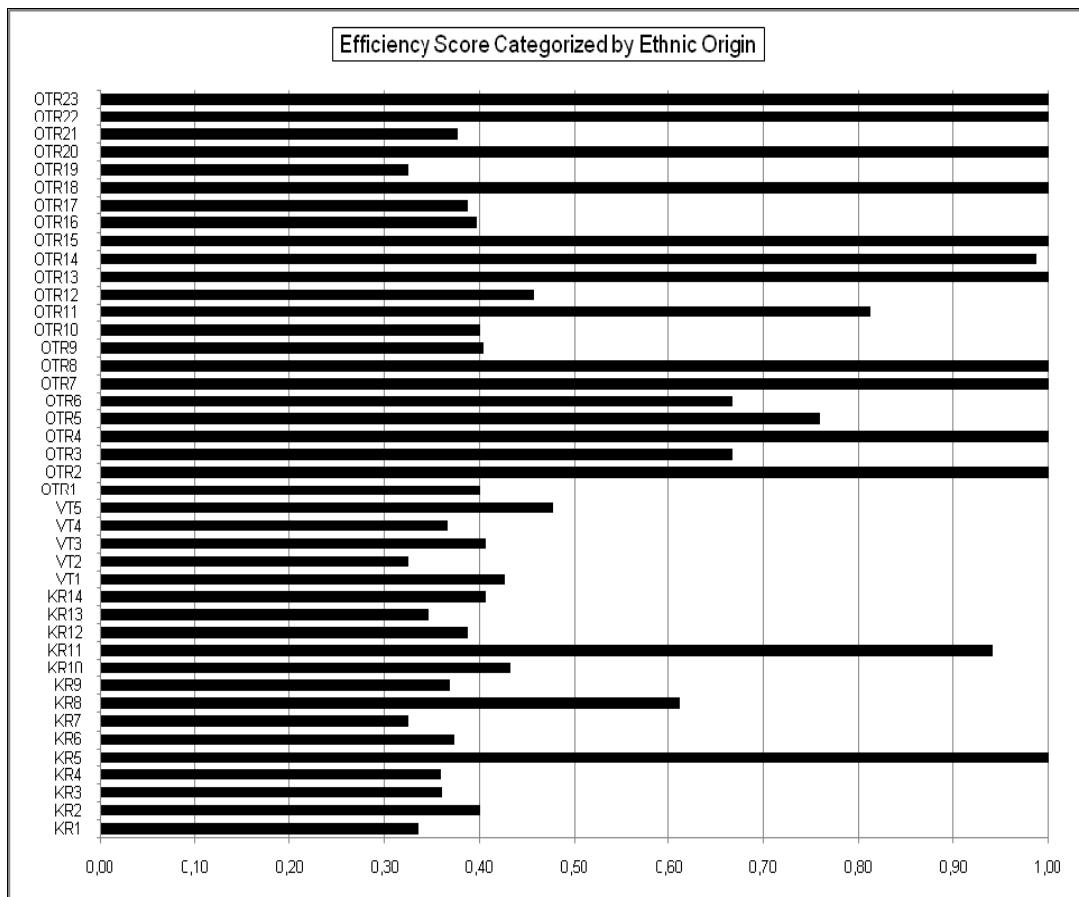


Figure 5. Efficiency score of entrepreneurs categorized by ethnic origin (Fairfax)

Note: OTR = Other origin, VT = Vietnamese, KR = Korean

6. Conclusions

It is noteworthy that the past decades have shown remarkable growth in entrepreneurship among migrants. Recent studies on ethnic entrepreneurship have observed an increasing share of migrants in urban small- and medium-sized entrepreneurial businesses.

The phenomenon of migrant entrepreneurship deserves more in-depth scientific investigation, on the basis of, inter alia, comparative studies in terms of incubator conditions and critical success factors (CSFs) for a promising and efficient business performance. Given the

growing importance of entrepreneurship, there is practical value in being able to identify CSFs. Due insight into entrepreneurial behaviour and the relative performance of migrants is needed in developing an effective business policy in which migrants are seen as a source of new socio-economic opportunities, for both the migrant groups and the city concerned. Strategic information will also be necessary for the development of fine-tuned policy strategies for enhancing the participation of traditionally less-privileged groups and for improving their business performance potential.

The results of our analysis, based on DEA analysis, show that the performance of migrant entrepreneurs may differ based on their efficiency rate. The above findings are certainly provisional and call for more solid research on a large sample of migrant entrepreneurs. For further research it will be interesting to examine possible reasons for differences in performance and efficiency rates between migrant entrepreneurs. Possible reasons for low, or differences in, efficiency rates amongst migrant entrepreneurs may be caused by the limited potential for growth of their market niches, because several of these entrepreneurs appear to operate in limited markets. Other reasons for their low efficiency rate may be less labour (-market) experience and lack of entrepreneurial experience.

For further research it will be also interesting to compute the proportion of space filled by the bars of the graphs in Figure 4 and 5 to the total space and to create a ratio of group-specific efficiency. Alternatively, it is possible to create a slope measure that is computed across the bars of each sub-graph. The steeper the slope the more efficient the group. Such measures could be used to compare relative group efficiencies. Such follow-up research could often a new contribution to the literature on the DEA methodology and comparative efficiency analysis too.

Finally, we need some more analysis in order to make some conclusions. First, by using a group measure of efficiency as described above it is possible to create a new measure for group efficiency and to identify the importance of this for making inter-group comparisons. Secondly, running a regression analysis with as the dependent variable the efficiency score and as independent variables business inputs (both aggregate and for Amsterdam and Fairfax separately, and for the specific groups of entrepreneurs) to determine which independent variables are more important and how much consistency there is across groups is a relevant item for further research.

References

- Acs, Z.J., and Armington C., eds. (2006). *Entrepreneurship, geography, and American economic growth* Cambridge University Press, Cambridge
- Acs, Z.J., and Audretsch D.B., eds. (1993). *Small Firms and Entrepreneurship; An East-West Perspective*, Cambridge University Press, Cambridge.

- Adler, P. S., and Kwon S.W. (2002). Social Capital: Prospects for a New Concept, *Academy of Management Review*, vol. 27, no. 1, pp. 17-40.
- Aldrich, H.E. and Zimmer C. (1986). Entrepreneurship through Social Networks, in: D.L. Sexton and R.W. Wilson (eds.), *The Art and Science of Entrepreneurship*, Ballinger, Mass, pp. 154-167.
- Aronson, D. (1997). Research Perspectives on Migration, *A joint project of the International Migration Policy Program of the Carnegie Endowment for International Peace and the Urban Institute*, vol. 1, no. 2
- Audretsch, D.B. and Thurik, A.R. (2001). What's New about the New Economy? Sources of Growth in the Managed and Entrepreneurial Economies, *Industrial and Corporate Change*, vol. 1, no. 10, pp. 267-315.
- Basu, A. (1998). An Exploration of Entrepreneurial Activity among Asian Small Businesses in Britain. *Small Business Economics*, vol. 10, pp. 313-326.
- Bates, T. (1994a). An Analysis of Korean-Immigrant-Owned-Small-Business Start-Ups With Comparisons to African-American- And Nonminority-Owned Firms, *Urban Affairs Quarterly*, vol. 30, no. 2.
- Bates, T. (1994b). Social Resources Generated by Group Support Networks May Not be Beneficial to Asian Immigrant-owned Small Businesses, *Social Forces*, vol. 72, no. 3, pp. 671-689.
- Bates, T. (1999). Race, Self-Employment, and Upward Mobility: An Illusive American Dream; Response to John Sibley Butler's Review Essay, *Small Business Economics*, Springer, vol. 12, no. pp. 189-190
- Baum, R.J., Locke E.A. and Smith K.G. (2001). A Multidimensional Model of Venture Growth, *Academy of Management Journal*, vol. 44, no. 2, pp. 292-303.
- Baycan-Levent, T., Masurel, E. and Nijkamp, P. (2003). Diversity in Entrepreneurship: Ethnic and Female Roles in Urban Economic Life. *International Journal of Social Economics*, vol. 30, no. 11, pp. 1131-1161.
- Becker, Gary S. (1975). Human Capital – A Theoretical and Empirical analysis with Special Reference to Education, The Press of Chicago University, Chicago.
- Birley, S., and Ghaie S. (1992). *Networking by the Indian Community in Northern Ireland, Working Paper*. Imperial College, London
- Bonacich, E., Light, I. and Wong, C. (1976). Small business among Koreans in Los Angeles, in: Gee, E. (ed.), *Counterpoint: Perspectives on Asian America*, Asian American Studies Center, Los Angeles
- Borjas G. (1990). *Friends or strangers: The impact of immigrants on the U.S. Economy*, Basic Books, NewYork.
- Boubakri, H. (1999). Les Entrepreneurs Migrants d'Europe, *Paris: Culture & Conflits, Sociologie Politique de l'International*, Printemps-Été, Paris.
- Bourdieu, P. (1986). The forms of capital, in: J.G. Richardson (ed.), *Handbook for Theory and Research for the Sociology of Education*, Greenwood, New York, pp. 241-258.
- Brown, T.C., and Hanlon D. (2004). Validation of Key Behaviours for Effective Entrepreneurship, Paper presented at the BKERC , Glasgow June 3-5.
- Brücker, H., Epstein, G.S., McCormick, B., Saint-Paul, G., Venturini, A., Zimmermann, K.F. (2002). Managing migration in the European welfare state. in: Boeri, T., Hanson, G. and McCormick, B. (eds.), *Immigration Policy and the Welfare System*, Oxford University Press, Oxford, pp. 1-168.

- Butler, J.S. and Greene P.G. (1997). Ethnic Entrepreneurship: the continuous rebirth of American Entrepreneurship, in: Sexton D.L. and Smilor R.W. (eds.), *Entrepreneurship 2000*, Upstart Publishing, Chicago, pp. 267-289.
- Carland, J. and Carland J.C. (1993). The Role of Personality in New Venture Creation, *Entrepreneurship, Innovation and Change*. vol. 2, no. 2, pp. 129-140.
- CEEDR (2000). *Young Entrepreneurs, Women Entrepreneurs, Ethnic Minority Entrepreneurs and Co-Entrepreneurs in the European Union and Central and Eastern Europe*. Final Report to the European Commission, DG Enterprise, Centre for Enterprise and Economic Development Research (CEEDR) Middlesex University Business School, UK.
- Charnes, A., Cooper W.W., Rhodes E. (1978). Measuring the Efficiency of Decision Making Units, *European Journal of Operational Research*, vol. 2, pp. 429-444.
- Choenni, A. (1997). *Veelsoortig Assortiment*, Het Spinhuis, Amsterdam.
- Chou, Y. K., (2006). Three simple models of social capital and economic growth, *Journal of Socio-Economics*, vol.35, no. 5, pp. 889-912.
- Cooper, A., Gimeno-Gascon J. and Woo C. (1994). Initial Human and Financial Capital as Predictors of New Ventures Performance, *Journal of Business Venturing*, vol. 9, pp. 371-395.
- Dagevos, J., and Gesthuizen M. (2005). *Niet-westerse allochtonen met een stabiele arbeidsmarktpositie: aantallen en ontwikkelingen*, Sociaal en Cultureel Planbureau, Den Haag.
- Dasgupta, P. and Serageldin, I. (eds) (1999). *Social Capital. A Multifaceted perspective*, The World Bank, Washington D.C.
- De Carolis, D. and Saporito, P. (2006). Social capital, cognition and entrepreneurial opportunities: A theoretical framework, *Entrepreneurship Theory and Practice*, vol. 30, no. 1, pp. 41-56
- Deakins, D., M. Majunder, A. Paddison (1997). Developing Success Strategies for Ethnic Minorities in Business: Evidence from Scotland. *New Community* **23**: 325-342.
- Delft, H. van, Gorter, C. and Nijkamp, P. (2000). In Search of Ethnic Entrepreneurship in the City. *Environment & Planning C* 18: pp. 429-451.
- Dhaliwal, S. (1998). Silent Contributors: Asian Female Entrepreneurs and Women in Business, *Women's Studies International Forum*, vol. 21, no. 5, pp. 463-474.
- Driessen, M.P. and Zwart, P.S. (NA) "The Role of the Entrepreneur in Small Business Success: the Entrepreneurship Scan", <http://www.unternehmerscan.de/files/ICSBv5.pdf>; visited on October 13, 2008).
- Dyer, L.M. and Ross C.A. (2000). Ethnic Enterprises and their Clientele, *Journal of Small Business Management*, vol. 38, no. 2, pp. 48-66.
- Evans, M.D.R. (1989). Immigrant entrepreneurship: Effects of ethnic market size and isolated labor pool, *American Sociological Review*, vol. 54, pp. 950-962
- Florin, J., Lubatkin M. and Schulze W. (2003). A Social Capital Model of High-Growth Ventures, *Academy of Management Journal*, vol. 46, no. 3, pp. 374-384.
- Fukuyama, F. (1995). *Trust: Social Virtues and the Creation of Prosperity*, Free Press, New York
- Glaeser, E. L. Laibson, D.K., Scheinkman, J.A., and Soutter, C.L. (2000). Measuring Trust, *Quarterly Journal of Economics*, vol. 115., no. 3, pp. 811-46.
- Greenwood, M.J. (1994). Potential Channels of Immigrants Influence on the Economy of the Receiving Country. *Papers in Regional Science* 73: 211-240.

- Hammarstedt, M. (2001). Immigrant Self-employment in Sweden – Its variation and some possible determinants, *Entrepreneurship & Regional Development*, vol. 13, pp. 147-161.
- Hansemark, O. (1998). The Effects of an Entrepreneurship Programme on Need for Achievement and Locus of Control of Reinforcement, *International Journal of Entrepreneurial Behaviour and Research*, vol. 4, no. 1, pp. 28-50.
- Hébert, R.F. and Link, A.N. (1989). In Search of the Meaning of Entrepreneurship, *Small Business Economics*, Vol. 1, pp. 39-49.
- Ho, T.S. and Koh H.C. (1992). Differences in Psychological Characteristics between Entrepreneurially Inclined and Non-entrepreneurially Inclined Accounting Graduates in Singapore, *Entrepreneurship, Innovation and Change: An International Journal*, vol. 1, pp. 243-254.
- Iyer, G. R., and Shapiro J. M. (1999). Ethnic Entrepreneurial and Marketing Systems: Implications for the Global Economy, *Journal of International Marketing*, vol. 7, no. 4, pp. 83-110.
- Jacobs, J. (1961). *The Life and Death of Great American Cities*, Random House, New York
- Johnson, B.R. (1990). Toward a Multidimensional Model of Entrepreneurship: The Case of Achievement Motivation and the Entrepreneur, *Entrepreneurship Theory and Practice*, pp. 39-54.
- Kakati, M. (2003) Success Criteria in High-tech New Firms, *Technovation*, vol. 23, pp. 447-457.
- Kalantardis, C., and Bika Z. (2006). In-migrant entrepreneurship in rural England: beyond local embeddedness, *Entrepreneurship & Regional Development*, vol. 18, pp. 109-131.
- Keeble, D. (1989). High Technology Industry and Regional Development in Britain: The case of the Cambridge Phenomenon, *Government and Policy*, vol. 7, pp. 152-172.
- Keeble, D., and Tyler P. (1995). Enterprising Behaviour and the Urban-Rural Shift, *Urban Studies*, vol. 32, no. 6, pp. 975-997.
- Kim, Ph. H., Aldrich H.E., Keister L.A. (2003). Access (Not) Denied: The Impact of Financial, Human and Cultural Capital on Entrepreneurial Entry in the United States, *Small Business Economics* vol. 27, no. 1, p. 5-22.
- Köllinger, P., and Minniti, M. (2006). Not for a lack of. trying: American entrepreneurship in black and white, *Small Business Economics*, vol. 27, pp. 59-79.
- Lee, H.S. and Chang S. (2005). Environmental Jolts, Internal Buffers, and Failures Versus Survivals of High-technology Based Ventures, Paper presented at BKERC, Boston, June 8-11.
- Lee, J. and Lee S. (2004) Failure Factors of New Technology-Based Ventures According to the Growth Stages, *Frontiers of Entrepreneurship Research*, Babson College, Wellesley MA, pp.1-14.
- Levie, J. (2007). Immigration, in-migration, ethnicity and entrepreneurship: insights from the GEM UK database. *Small Business Economics* vol. 28, no. 2, pp. 143-169.
- Levie, J. and Smallbone D. (2006). Entrepreneurship, ethnicity and migration: current trends and future directions. In: Minniti, M. (ed.), *Perspectives on Entrepreneurship* (Volume 1), Praeger, Westport CT, pp. 157-180.
- Light, I., (1984). Immigrant and Ethnic Enterprise in North America, *Ethnic and Racial Studies*, vol. 7, pp. 195-216.
- Light, I and Gold, S. J. (2000). *Ethnic Economies*, Academic Press , San Diego.
- Light, I., and Roach E. (1996). Self-Employment: Mobility Ladder or Economic Lifeboat. In R. Waldinger, and M.

- Bozorgmehr (Eds.), *Ethnic Los Angeles* (pp. 193-213). New York: Russell Sage Foundation.
- Light, I. and Rosenstein C. (1995). *Race, Ethnicity and Entrepreneurship in Urban America*, Aidine de Gruyter, New York.
- Lumpkin, G.T. and Dess, G.G. (1996). Clarifying the Entrepreneurial Orientation and Linking it to Performance, *Academy of Management Review*, vol. 21, pp. 135-152.
- Marger, M. (1989). Business Strategies Among East-Indian Entrepreneurs in Toronto: The Role of Group Resources and Opportunity Structure, *Ethnic and Racial Studies*, vol. 12, pp. 539-563.
- Masurel, E., Nijkamp, P., Tastan, M. and Vindigni, G. (2002). Motivations and Performance Conditions for Ethnic Entrepreneurship. *Growth & Change* 33(2): 238-260.
- Menzies, T. V., Brenner G.A., and Filion L.J. (2003). Social Capital, Networks and Ethnic Minority Entrepreneurs: Transnational Entrepreneurship and Bootstrap Capitalism, in: Etemad H. and Wright R.W. (eds.), *Globalization and Entrepreneurship: Policy and Strategy Perspectives*, Edward Elgar, Northampton MA, pp. 125-151.
- Menzies, T. V., Doichon, M., Gasse, Y., and Elgie, S. (2006). A longitudinal study of the characteristic, business creation process and outcome differences of Canadian female vs. male nascent entrepreneurs, *International Entrepreneurship and Management Journal*, vol. 2, pp. 441-453.
- Mesch, G.S., and Czamanski, D. (1997). Occupational closure and immigrant entrepreneurship: Russian Jews in Israel. *Journal of Socio-Economics*, vol. 26, pp. 597- 610.
- Min, P.G. (1987). Factors Contributing to Ethnic Business: A Comprehensive Synthesis, *International Journal of Comparative Sociology*, vol. 28, nos. 3/ 4, pp. 173-193.
- Mueller, P. (2005). *Exploring the Knowledge Filter - How Entrepreneurship and University-Industry Relations Drive Economic Growth*, ERSA conference papers ersa05p610, European Regional Science Association.
- Nahapiet, J. and Ghoshal, S. (1998). Social capital, intellectual capital, and the organizational advantage, *Academy of Management Review*, vol. 23, no. 2., pp. 242-266.
- Nijkamp, P. (2003). Entrepreneurship in a Modern Network Economy. *Regional Studies* 37(4): 395-405.
- Nijkamp, P., Sahin M. and Suzuki S. (2008). Migrant Entrepreneurs and the Struggle for Survival, A Comparative Study on the Efficiency Performance of Migrant Entrepreneurs in Amsterdam by Means of Data Envelopment Analysis, *Regional Studies* (forthcoming).
- Oort, F.J. van, and Atzema, O.A.L.C. (2004). On the Conceptualization of Agglomeration Economics: The Case of New Firm Formation in the Dutch ICT Sector, *Annals of Regional Science*, vol. 38, pp. 263-290.
- Peterson, M.F., and Roquebert J. (1993). Success patterns of Cuban-American enterprises: Implications for entrepreneurial communities, *Human Relations*, vol. 46, pp. 921-935.
- Phizaklea, A., and Ram M. (1996). Being Your Own Boss: Ethnic Minority Entrepreneurs in Comparative Perspective, *Work, Employment and Society*, vol. 10, no. 2, 1996.
- Portes, A., and Zhou M. (1996). Self-Employment and the Earnings of Immigrants, *American Sociological Review*, Vol. 61, No. 2, pp.219-230.
- Prashantham, S. (2006), Foreign Network Relationships and the Internationalization of Small Knowledge-Intensive Firms, *International Journal of Entrepreneurship and Innovation Management*, vol. 6, no. 6, pp. 542-553.

- Putnam, R. (2000). *Bowling alone: The collapse and Revival of American Community*, Simon & Schuster, New York
- Ram, M. (1994), *Managing to Survive: Working Lives in Small Firms*, Blackwell, Oxford.
- Richtmyer, R. (2002). KEMET building ties with Japan, US Dept of Commerce, Bureau of the Census
- Robb, A., and Fairlie R. (2007). Access to financial capital among U.S. businesses: The case of African American firms. *The Annals of the American Academy of Political and Social Science*, no. 613, pp. 4-72.
- Sahin, M., Nijkamp P. and Baycan-Levent T. (2006). Is Migrant Entrepreneurship from the Perspective of Cultural Diversity, in: L. P. Dana (ed.), *Migrant Entrepreneurship*, Edward Elgar, Aldershot, pp. 99-113.
- Sahin, M., Nijkamp P. and Baycan-Levent T (2007), Migrant Entrepreneurship from the Perspective of Cultural Diversity, in: Aktan C.C. (ed.), *Advances in Business and Management*, Cesme, Izmir, pp. 103-121.
- Sanders, J. and Nee, V. (1996). Immigrant Self Employment: The Family as Social Capital and the Value of Human Capital, *American Sociological Review*, vol. 61, pp. 231-249.
- Shepherd, D.A., Douglas E.J. and Shanley M. (2000). New Venture Survival: Ignorance, External Shocks, and Risk Reduction Strategies, *Journal of Business Venturing* vol. 15, pp. 393-410.
- Shin, E., and Han S. (1990). Korean Immigrant Small Businesses in Chicago: An Analysis of the Resource Mobilization Process, *Amerasia Journal*, vol. 16, no. 1, pp. 39-60.
- Sobel., J. (2002). Can we Trust Social Capital? *Journal of Economic Literature*, vol. XL, pp. 139-154.
- Tanaka, S., and Krishnan A. (2006). Migration – Migrant entrepreneurship; Cities, Magnets of Hope, Habitat Debate, World Habitat Day, 2 October, 2006.
- Teder, J., and Golik, M. (2006). Ethnic Minorities and Entrepreneurship in Estonia, paper presented at the 14th Nordic Conference on Small Business Research, Stockholm: [http://www.ncsb2006.se/download_title.htm].
- Teixeira, C. (1998). Cultural Resources and Ethnic Entrepreneurship: A Case Study of the Portuguese Real Estate Industry in Toronto, *The Canadian Geographer*, vol. 42, no. 3, pp. 267-281.
- Tillie, J. and Slijper, B. (2006). Immigrant Political Integration and Ethnic Civic Communities in Amsterdam. In: S. Benhabib and I. Shapiro (eds.), *Identities, Allegiances and Affiliations*, Cambridge University Press, Cambridge.
- Torres, D. L. (1988). Success and the Mexican-American Businessperson, *Research in the Sociology of Organizations*, vol. 6, pp. 313-334.
- Velde, M.E.G. van, Jansen, P.G.W. en Telting, I.A. 2000. “*Bedrijfswetenschappelijk onderzoek: van probleemstelling tot presentatie*”. Baarn: Nelissen.
- Waldinger, R. (1988). The Ethnic Division of Labour Transformed: Native Minorities and New Immigrants in Post-Industrial New York, *New Community*, vol. 14, no. 3.
- Waldinger, R. Aldrich, H. and Ward, R. (eds) (1990). *Ethnic Entrepreneurs*. Sage Publishers. Newbury Park, Ca.
- Walton-Roberts, M., and Hiebert D. (1997). Immigration, Entrepreneurship and the Family: Indo-Canadian Enterprise in the Construction Industry of Greater Vancouver, *Canadian Journal of Regional Science*, vol. 20, nos. 1-2, pp. 119-140.

- Ward, R. and Jenkins R. (eds) (1984). *Ethnic Communities in Business*, Cambridge University Press. Cambridge
- Wennekers, S. and Thurik A.R. (1999). Linking entrepreneurship and economic growth, *Small Business Economics*, vol. 13, no. 1, pp. 27-55.
- Werbner, P. (1999). What Colour 'Success'? Distorting Value in Studies of Ethnic Entrepreneurship, *The Sociological Review*, vol. 47, no. 3, pp. 548-579.
- Westlund, H. and Bolton R. (2003). Local Social Capital and Entrepreneurship. *Small Business Economics*, vol. 21, pp. 77-113.
- Westlund, H. and Nilsson E. (2005). Measuring Enterprises: Investments in Social Capital, *Regional Studies*, vol. 39(8), pp. 1079-1094.
- Yu, J., and Stough R.R. (2006). The determinants of entrepreneurship and development in China, *International Journal of Management and Entrepreneurship Development*, vol. 3, nos. 1 /2, pp. 30-52.
- Yuengert, A. M. (1995). Testing Hypotheses of Immigrant Self-Employment, *The Journal of Human Resources*, vol. XXX, no. 1.
- Zorlu, A., and Traag, T. (2005). Opleidingsniveau en taalvaardigheid [Educational level and language proficiency], *Jaarrapport Integratie 2005*, SCP/WODC/CBS, The Hague.