

University of Groningen

Short-wavelength out-of-band EUV emission from Sn laser-produced plasma

Torretti, F.; Schupp, R.; Kurilovich, D.; Bayerle, A.; Scheers, J.; Ubachs, W.; Hoekstra, Romke; Versolato, O. O.

Published in:
Journal of physics b-Atomic molecular and optical physics

DOI:
[10.1088/1361-6455/aaa593](https://doi.org/10.1088/1361-6455/aaa593)

IMPORTANT NOTE: You are advised to consult the publisher's version (publisher's PDF) if you wish to cite from it. Please check the document version below.

Document Version
Publisher's PDF, also known as Version of record

Publication date:
2018

[Link to publication in University of Groningen/UMCG research database](#)

Citation for published version (APA):

Torretti, F., Schupp, R., Kurilovich, D., Bayerle, A., Scheers, J., Ubachs, W., ... Versolato, O. O. (2018). Short-wavelength out-of-band EUV emission from Sn laser-produced plasma. *Journal of physics b-Atomic molecular and optical physics*, 51(4), [045005]. DOI: 10.1088/1361-6455/aaa593

Copyright

Other than for strictly personal use, it is not permitted to download or to forward/distribute the text or part of it without the consent of the author(s) and/or copyright holder(s), unless the work is under an open content license (like Creative Commons).

Take-down policy

If you believe that this document breaches copyright please contact us providing details, and we will remove access to the work immediately and investigate your claim.

Downloaded from the University of Groningen/UMCG research database (Pure): <http://www.rug.nl/research/portal>. For technical reasons the number of authors shown on this cover page is limited to 10 maximum.

PAPER • OPEN ACCESS

Short-wavelength out-of-band EUV emission from Sn laser-produced plasma

To cite this article: F Torretti *et al* 2018 *J. Phys. B: At. Mol. Opt. Phys.* **51** 045005

View the [article online](#) for updates and enhancements.

Short-wavelength out-of-band EUV emission from Sn laser-produced plasma

F Torretti^{1,2} , R Schupp¹ , D Kurilovich^{1,2} , A Bayerle¹ , J Scheers^{1,2} ,
W Ubachs^{1,2} , R Hoekstra^{1,3}  and O O Versolato¹ 

¹ Advanced Research Center for Nanolithography, Science Park 110, 1098 XG Amsterdam, The Netherlands

² Department of Physics and Astronomy, and LaserLaB, Vrije Universiteit, De Boelelaan 1081, 1081 HV Amsterdam, The Netherlands

³ Zernike Institute for Advanced Materials, University of Groningen, Nijenborgh 4, 9747 AG Groningen, The Netherlands

E-mail: f.torretti@arcnl.nl

Received 8 September 2017, revised 11 December 2017

Accepted for publication 5 January 2018

Published 25 January 2018



CrossMark

Abstract

We present the results of spectroscopic measurements in the extreme ultraviolet regime (7–17 nm) of molten tin microdroplets illuminated by a high-intensity 3 J, 60 ns Nd:YAG laser pulse. The strong 13.5 nm emission from this laser-produced plasma (LPP) is of relevance for next-generation nanolithography machines. Here, we focus on the shorter wavelength features between 7 and 12 nm which have so far remained poorly investigated despite their diagnostic relevance. Using flexible atomic code calculations and local thermodynamic equilibrium arguments, we show that the line features in this region of the spectrum can be explained by transitions from high-lying configurations within the Sn^{8+} – Sn^{15+} ions. The dominant transitions for all ions but Sn^{8+} are found to be electric-dipole transitions towards the $n = 4$ ground state from the core-excited configuration in which a $4p$ electron is promoted to the $5s$ subshell. Our results resolve some long-standing spectroscopic issues and provide reliable charge state identification for Sn LPP, which could be employed as a useful tool for diagnostic purposes.

Keywords: EUV spectroscopy, highly charged ions, laser-produced plasma


(Some figures may appear in colour only in the online journal)

1. Introduction

Sn and its highly charged ions are of undoubtable technological importance, as these are the emitters of extreme ultraviolet (EUV) radiation around 13.5 nm used in nanolithographic applications [1, 2]. In such state-of-the-art lithography machines, EUV light is generated using pulsed, droplet-based, laser-produced plasma (LPP) [3, 4]. Molten Sn microdroplets are illuminated by high-intensity (10^9 – 10^{12} W cm⁻²) laser pulses, generating typically high-density (10^{19} – 10^{21} electrons cm⁻³) plasma. In this plasma, laser light is converted efficiently into

photons with wavelengths close to 13.5 nm. Technologically this is advantageous as it corresponds to the peak reflectivity of the mirrors composing the projection optics in nanolithography machines. These molybdenum–silicon multi-layer mirrors [5, 6] are characterised by an ‘in-band’, 2% reflectivity bandwidth centred around 13.5 nm, which conveniently overlaps with the strong EUV emission of Sn LPP. The relatively high conversion efficiency of laser into EUV light in this wavelength region is mainly due to the atomic structure of the highly charged Sn ions found in this LPP.

The atomic transitions responsible for these EUV photons are $4p^6 4d^m - 4p^6 4d^{m-1} 4f + 4p^6 4d^{m-1} 5p + 4p^5 4d^{m+1}$, with $m = 6-0$ for Sn^{8+} – Sn^{14+} [7]. These transitions are clustered in so-called unresolved-transition arrays (UTAs) [8] as the close-lying large number of possible transitions arising from the complex open- $4d$ -subshell electronic structure

 Original content from this work may be used under the terms of the [Creative Commons Attribution 3.0 licence](https://creativecommons.org/licenses/by/3.0/). Any further distribution of this work must maintain attribution to the author(s) and the title of the work, journal citation and DOI.

renders them unresolvable in practical applications. Configuration-interaction between the excited states $4p^6 4d^{m-1} 4f$ and $4p^5 4d^{m+1}$ causes a significant redistribution of oscillator strength towards the high-energy side of the transition arrays, which is referred to as ‘spectral narrowing’ [9]. A serendipitous level crossing involving the EUV-contributing excited configurations [10] furthermore fixes the average excitation energies of the excited states to the same value across a number of charge states.

The nature of the convoluted structure of these highly charged ions has been addressed in several theoretical and experimental investigations both directly in the EUV regime and in the optical regime where charge state-resolved spectroscopy enables complementary investigations that challenge the direct EUV measurements [11–22].

In view of the application perspective, most of the work has so far been focused on the configurations responsible for emission around 13.5 nm. However, in dense and hot plasmas, a significant amount of energy can be radiated at shorter wavelengths arising from configurations that remain poorly investigated with, to the best of our knowledge, but a single study [12] dedicated to the corresponding transition arrays. This short-wavelength, ‘out-of-band’ radiation could very well negatively affect the optics lifetime [6, 23], whilst obviously hindering the conversion efficiency from laser energy to 13.5 nm photons.

In our experiments EUV spectra are obtained from plasma created by irradiating micrometre-sized molten Sn droplets with a pulsed Nd:YAG laser. We focus on the short-wavelength, high-energy features in the 7–12 nm region and provide a detailed study of their origins using the flexible atomic code (FAC) [24]. Applying a simple local thermodynamic equilibrium (LTE) scaling argument, we show that the line features in the experimental spectrum can be well explained by electric-dipole ($E1$) transitions from high-lying configurations within the same tin charge states responsible for 13.5 nm radiation in EUV sources. We find that the dominant contribution in the short wavelength region actually comes from the core-excited configuration $4p^5 4d^m 5s$ where a $4p$ core electron is promoted to the $5s$ subshell. Our calculations excellently reproduce the line emission features observed experimentally, furthering the understanding of these emission features, and enabling the identification of individual contributions from various charge states Sn^{8+} – Sn^{15+} which remain unresolvable in the 13.5 nm UTAs. Furthermore, using the Bauche–Arnoult UTA formalism [8, 9, 25] as well as Gaussian fits to our results, we provide simplified outcome of our calculations which can be used to straightforwardly interpret Sn LPP spectra.

2. Experiment

The experimental setup to generate droplets has been described in a previous publication [26], and only the details relevant to this article are presented in the following. Droplets of molten tin of 99.995% purity are dispensed from a droplet generator operating at a 10.2 kHz repetition rate inside a

vacuum vessel filled with a continuous flow of Ar buffer gas ($\sim 10^{-2}$ mbar). The droplets have a diameter of approximately 45 μm . An injection-seeded, 10 Hz repetition rate, 3 J, 60 ns pulse length Nd:YAG laser operating at its fundamental wavelength $\lambda = 1064$ nm is imaged to a circular flat-top beam spot (200 μm at $1/e^2$ encircled energy) at the droplet position, producing an averaged intensity of $1.6 \times 10^{11} \text{ W cm}^{-2}$, close to industrially relevant conditions for obtaining high conversion efficiency [27–29]. Using polarising optics the laser energy can be set without modifying the beam spot. The linearly-polarised laser pulse is timed to hit the droplet, thus creating an EUV-emitting plasma. This emitted EUV radiation is coupled into a grazing-incidence spectrometer positioned at a 120° angle with respect to the laser light propagation direction (directly facing the laser-droplet interaction zone). Optical light and debris from the LPP are blocked by a 200 nm thick zirconium filter. In the spectrometer the EUV light is diffracted by a gold-coated concave grating (1.5 m radius of curvature, 1200 lines-per-mm) at an angle of incidence of 86° with respect to the grating normal. The 100 μm entrance slit and the detector, a Greateyes back-illuminated charge coupled device (GE 2048 512 BI UV1) cooled to 0°C , are positioned on the circle determined by the radius of curvature of the grating, in a standard Rowland circle geometry. Wavelength calibration is performed after the measurements using an aluminium solid target positioned at the same location as the droplets and ablated by the Nd:YAG laser. Well-known Al^{3+} and Al^{4+} lines in the 10–16 nm range from the NIST atomic database [30] are used, obtaining a calibration function with a systematic one-standard-deviation uncertainty of 0.003 nm. The typical full-width at half-maximum of the features observed is approximately 0.06 nm at 13 nm wavelength.

During acquisition, the camera is exposed to about ten droplets irradiated by the Nd:YAG laser. This exposure is repeated multiple times to improve the statistics of the measurement, resulting in an averaged spectrum. The obtained spectrum is corrected for geometrical aberrations causing the spectra to move across the vertical, non-dispersive axis of the camera, as is known from the Al calibration spectra. Background counts are dominated by readout-noise and are subtracted before averaging over the non-dispersive axis. The contribution of second-order diffraction is obtained from the line emission in the Al calibration spectra, enabling the related correction. Further corrections are subsequently applied for the sensor quantum efficiency, as obtained from the manufacturer datasheets, and the Zr-filter transmission curve [31]. No correction curves could be obtained for the gold-coated grating. However, the behaviour in the 7–12 nm region can reasonably be expected to be rather constant [31].

Figure 1 shows a thus obtained spectrum. The strongest feature is found near 13.5 nm wavelength as expected. The left shoulder of this UTA feature, starting its steep rise upward from about 13 nm with well-known contributions from Sn^{10+} – Sn^{14+} [13, 15, 16] continuing to a peak at exactly 13.5 nm after which the feature decays more slowly as it moves over the contributions of the lower tin charge states [13, 14] whilst also suffering opacity-related broadening [32].

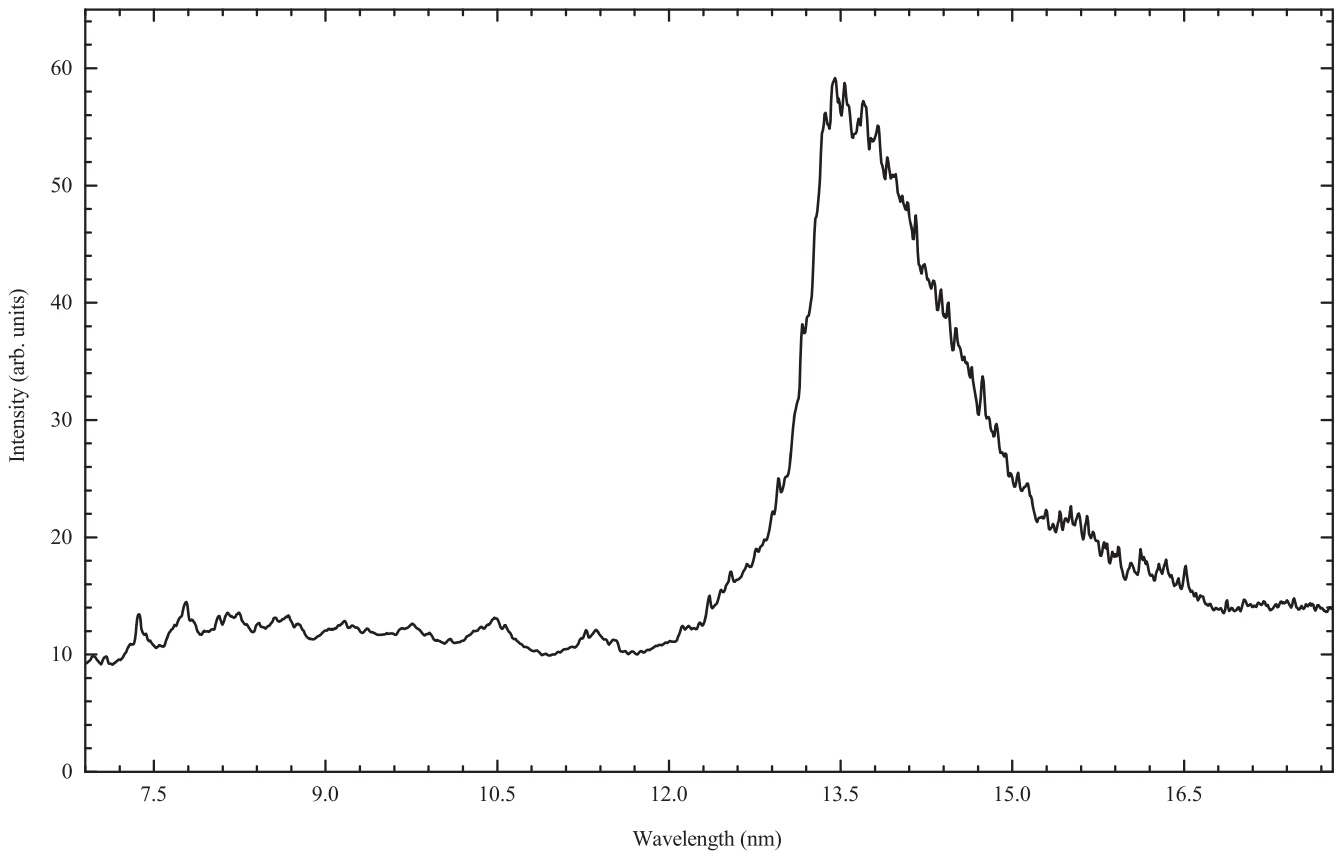


Figure 1. Experimental spectrum emitted by the plasma generated from a 45 μm diameter Sn droplet irradiated by a 60 ns Nd:YAG laser pulse, circular flat-top beam spot of 200 μm ($1/e^2$ encircled energy). This spectrum is obtained at an average laser intensity of $1.6 \times 10^{11} \text{ W cm}^{-2}$.

This main feature appears to lie on top of an apparent continuum which extends over the full observed wavelength range. At the typical plasma conditions of this LPP, such continuum radiation is usually attributed to recombination processes [33]. Continuing our investigations to line features with wavelengths below 12 nm first requires new calculations since, as pointed out in the introduction, pertinent experimental data and calculations are sparsely available.

3. Calculations

3.1. Atomic structure

For the interpretation of the short-wavelength side of the obtained experimental spectrum, we employ the FAC [24]. Specifically, we use it to investigate short-wavelength transitions in the 7–12 nm region in Sn^{8+} – Sn^{15+} . FAC performs relativistic atomic structure calculations including configuration-interaction. The atomic wavefunctions are calculated as linear combination of configuration state functions, which are determined from a local central potential obtained by solving self-consistently the Dirac equations. Relativistic effects are taken into account by the Dirac–Coulomb Hamiltonian. Radiative transition rates are calculated from the obtained wavefunctions in the single-multipole approximation. For more details, we refer to [24].

Calculations are performed including the following configurations for the open-4*d*-shell ions Sn^{8+} – Sn^{13+} : the ground state $[\text{Kr}]4d^m$, $[\text{Kr}]4d^{m-1} 4f$, $[\text{Kr}]4d^{m-1} 5pf$, $[\text{Kr}]4d^{m-1} 6pf$, $[\text{Ar}]3d^{10} 4s^2 4p^5 4d^{m+1}$, $[\text{Ar}]3d^{10} 4s^2 4p^5 4d^m 5sd$, $[\text{Ar}]3d^{10} 4s^2 4p^5 4d^m 6sd$ ($m = 6-1$). This somewhat limited set of configurations is used since, in the chosen benchmark case of Sn^{8+} , they give good agreement with both *ab initio* multi-configuration Dirac–Fock calculations performed by Svendsen and O’Sullivan [12] as well as with the current experimental observations. For the open-4*p*-shell ions Sn^{14+} and Sn^{15+} , the configuration sets used are $[\text{Ar}]3d^{10} 4s^2 4p^q$, $[\text{Ar}]3d^{10} 4s^2 4p^q 4df$, $[\text{Ar}]3d^{10} 4s^2 4p^q 5spd$, $[\text{Ar}]3d^{10} 4s^2 4p^q 6spd$ ($q = 4, 5$), which are found to give good agreement with measured features. Weighted transition rates $g_i A_{ij}$ (statistical weight g_i of upper level i times the transition probability A_{ij} from i to j) are calculated for transitions from each excited state towards the ground state for all ions involved.

3.2. Emission properties

Our FAC calculations indicate that in the 7–12 nm (or approximately 110–180 eV) region the main transitions of interest (i.e. the strongest contributions to the radiative decay) are the following: $4d^m-4d^{m-1} 5f$ (from here on denoted as $4d-5f$), $4d^m-4d^{m-1} 6p$ ($4d-6p$), $4d^m-4d^{m-1} 6f$ ($4d-6f$), $4p^6 4d^m-4p^5 4d^m 5s$ ($4p-5s$), $4p^5 4d^m-4p^5 4d^m 5d$ ($4p-5d$), $4p^6 4d^m-4p^5 4d^m 6s$ ($4p-6s$), $4p^6 4d^m-4p^5 4d^m 6d$ ($4p-6d$).

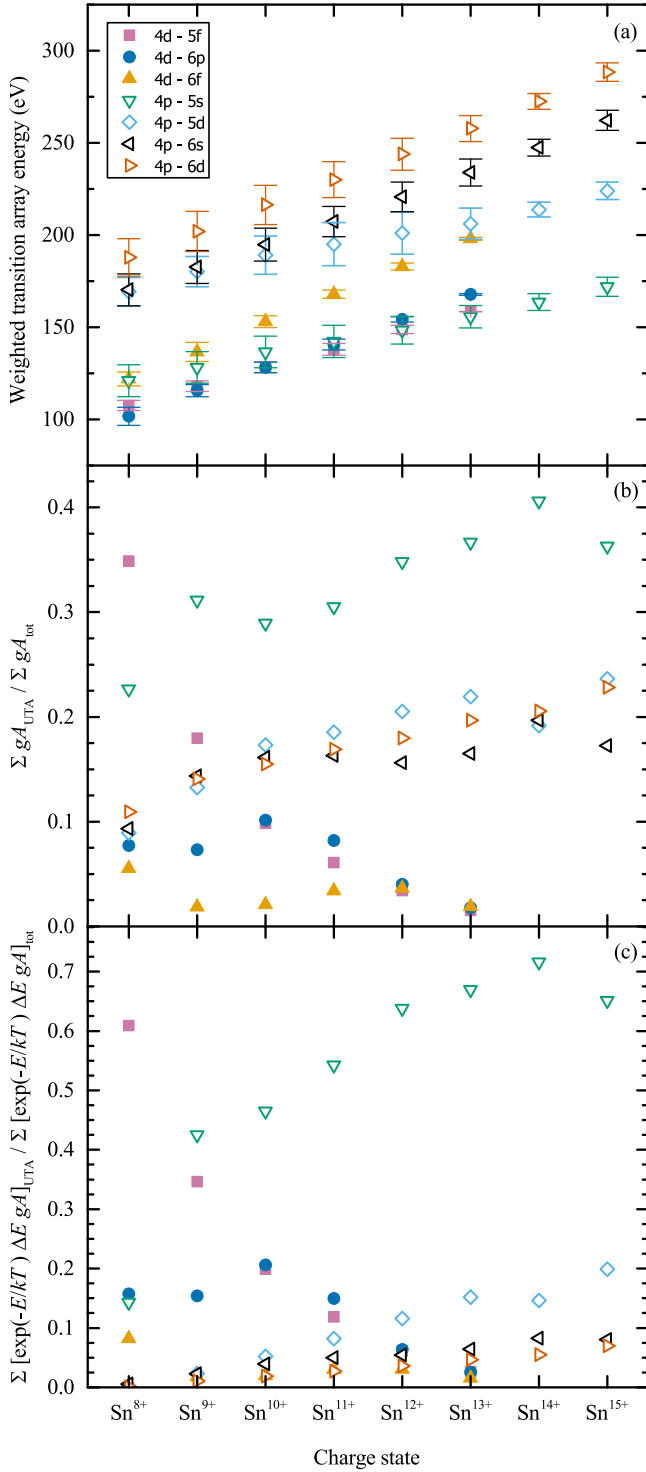


Figure 2. Scaling of the properties of the investigated transition arrays along the isonuclear sequence of the Sn ions observed in the experimental spectrum. The legend denotes the transition arrays according to the nomenclature used in the main text. (a) Weighted transition array energies μ_1 (see section 5) with the error bars indicating the width of the arrays, expressed as the Gaussian standard deviation σ . (b) Relative contributions of transition arrays for each ion in terms of weighted transition rates gA . (c) Relative array intensities for each ion calculated assuming the excited states relative populations to be in accordance with local thermodynamic equilibrium scaling (see main text).

These are all $E1$ single-electron excitations. In figure 2 the properties of these transition arrays are presented for the isonuclear sequence Sn⁸⁺–Sn¹⁵⁺. The weighted mean energies in figure 2(a) are calculated using as weights the transition rates (this is in accordance with the UTA formalism, see section 5 for a more thorough description). They are seen to scale quite regularly along the isonuclear sequence, increasing for higher ionic charge. There is no level crossing apparent, making these transition arrays a potential diagnostic tool to identify the contributions of different charge states in the spectra of Sn LPPs.

The weighted mean energies of the transition arrays towards the $n = 4$ ground state stemming from configurations with principal quantum number $n = 6$ are observed to scale more strongly with charge state Z compared to configurations having $n = 5$. This can be explained similarly to hydrogenic scaling of binding energy for different n orbitals. In these systems, the binding energy scales with $Z^2 n^{-2}$. The transition energy, i.e. the difference between the ground state and the excited state binding energies, will therefore have a stronger dependence on ionic charge for higher n . Naturally, this exact scaling does not perfectly describe the one observed, as hydrogenic approximations are far too limited to be able to interpret complicated ionic systems with multiple valence electrons such as the highly charged Sn ions here considered.

For each ion figure 2(b) shows the relative contributions of the arrays using the sum of their UTA transition rates ΣgA_{UTA} relative to the total ΣgA_{tot} for all the UTAs here investigated of that charge state. The transition array with the highest relative contribution is the $4p-5s$ array with the sole exception of Sn⁸⁺, for which the largest contribution comes from the $4d-5f$ array. Relatively large weighted transition rates are seen also for the other core-excited transitions $4p-5d$, $4p-6s$, and $4p-6d$. In previous work [12] only the arrays $4d-5f$ and $4p-6d$ were taken into account to explain their experimental result. These configurations, according to our FAC calculations, are of significance primarily for the ions Sn⁸⁺–Sn¹¹⁺ but cannot be expected to sufficiently explain the features even for these charge states. For all the ions investigated, using the weighted transition rates we show that the core-excited, open- $4p$ -shell configurations play a significant role in interpreting the high-energy out-of-band EUV emission of these Sn ions. We note that the energies of the associated configurations scale steeply with ionic charge. This means that we have to take into account the fact that the transition energies quickly move over the wavelength band studied in this work, as well as that the relative populations of the excited states need to be considered carefully.

3.3. LTE considerations

To obtain the actual expected emission characteristics in a plasma, weighted transition rates of the relevant UTAs alone are not sufficient, and the relative population of the excited states needs to be considered. A straightforward approach is provided by the LTE assumption, the conditions for which are

expected to be well met in the extremely high-density plasma created by the Nd:YAG laser pulse [34] where collisional processes outpace the relevant atomic decay rates by orders of magnitude. In this case, the population of the excited states can be approximated by the related Maxwell–Boltzmann statistics. The intensity I_{ij} of a single transition between atomic states i and j can subsequently be expressed as [9]

$$I_{ij} = n_i \Delta E_{ij} A_{ij} \propto \exp(-E_i/kT) \Delta E_{ij} g_i A_{ij}, \quad (1)$$

where n_i is the population of the excited state, ΔE_{ij} is the transition energy, E_i is the energy of the excited state and kT is the temperature associated with the emitter. From a preliminary comparison between calculations and the experimental spectrum, it becomes apparent that the wide wavelength range of the line emission is characterised by a very broad charge state distribution: in the spectrum, features belonging to Sn^{8+} through Sn^{15+} are tentatively observed. This broad distribution hints to the fact that the spectrum cannot be modelled by a single temperature, and that the different charge states exist in regions of the plasma where the temperature and density allow them to exist in the first place. Thus, in the following, the temperature kT in equation (1) is assumed to be the temperature at which the average charge state in the plasma is equal to the ion under consideration. The required relation between average charge state \bar{Z} and temperature kT is determined from thermodynamic considerations of the equation of state of Sn in [35], obtaining the following relationship:

$$kT(\text{eV}) = 0.56 \cdot \bar{Z}^{5/3}. \quad (2)$$

As is shown in figure 2(c), once this scaling is applied, the $4p$ – $5s$ re-enforces its position as dominant contribution to the ions' emitted radiation. The arrays $4d$ – $5f$ and $4d$ – $6p$ are relatively bright for the lower charge states Sn^{8+} – Sn^{11+} , whilst the core-excited transitions become more relevant for the higher charge states.

4. Comparison

Figure 3 shows the comparison between resulting LTE-weighted FAC calculations and the experimental spectrum. The former contribution is broken down into its individual charge state constituents for which we show drop-line plots of the three largest contributing configurations in each case. Only the top 95% of the transition rates is shown for improved visibility. The envelopes shown, again per charge state, are the results of convolving the quantities $\Delta E_{ij} \exp(-E_i/kT) g_i A_{ij}$ for all contributing configurations, with a Gaussian function having width equal to the instrument resolution. The sum of all the normalised envelopes without any further weighting factors is shown as the solid trace (dark-orange) below the experimental spectrum. This trace is only arbitrarily scaled with a common, unity multiplication factor and shifted upwards using a constant offset for improved visibility without the use of any free fit-parameters.

Nearly all sub-structures visible within the experimental spectrum can be linked to their theoretical counterparts. We note that this treatment does not include opacity effects. This is justified by previous experimental and theoretical studies of tin plasmas [21, 32], where it was shown that opacity does not play a significant role in the 7–12 nm region, quite unlike the case of the 12–15 nm region spanned by the UTAs relevant for the in-band emission. The agreement of our calculations with the experiment supports this statement.

Remarkably, our equivalent summation of the various normalised contributions reproduces the experimental spectrum quite well. This observation hints at a broad and relatively flat charge state distribution, which in part may be due to the time- and space-integrating nature of our measurement, thus averaging over large temperature and density gradients that are characteristic for these LPPs [36]. The detailed explanation of this observed feature is left for future work, as enabled by the here presented line identification. Minor wavelength shifts between calculated features and measurement are apparent, with an average absolute difference of 0.04 nm. Such a difference on the parts-per-thousand level is excellent considering the limited number of configurations used in our calculations, and surpasses the absolute accuracy obtained with FAC in complex ions where configuration interaction is prominent [37]. We conclude that the line features in our final synthetic spectrum are in excellent agreement with the experimental spectrum, strongly supporting our identifications of both charge states and electronic configurations.

5. UTA formalism

Having obtained an excellent replication of the experiment using our calculations, we will next employ the Bauche–Arnoult UTA formalism [8, 9, 25] to interpret our calculation results. The transition arrays presented in the previous sections are here characterised using the moments of their distribution [8, 9]. The n th-order moment μ_n of the energy distribution of $E1$ transitions between configurations A and B is expressed as

$$\mu_n(A \rightarrow B) = \frac{\sum_{i,j} |\langle i|\mathbf{D}|j\rangle|^2 [\langle i|\mathbf{H}|i\rangle - \langle j|\mathbf{H}|j\rangle]^n}{\sum_{i,j} |\langle i|\mathbf{D}|j\rangle|^2}, \quad (3)$$

where \mathbf{D} is the electric-dipole operator, \mathbf{H} the Hamiltonian matrix, i and j denotes the atomic states belonging to configurations A and B , respectively. The moment μ_n can also be conveniently expressed in terms of transition energies and weighted transition rates [38]:

$$\mu_n(A \rightarrow B) = \frac{\sum_k (\Delta E_k)^n g A_k}{\sum_k g A_k}, \quad (4)$$

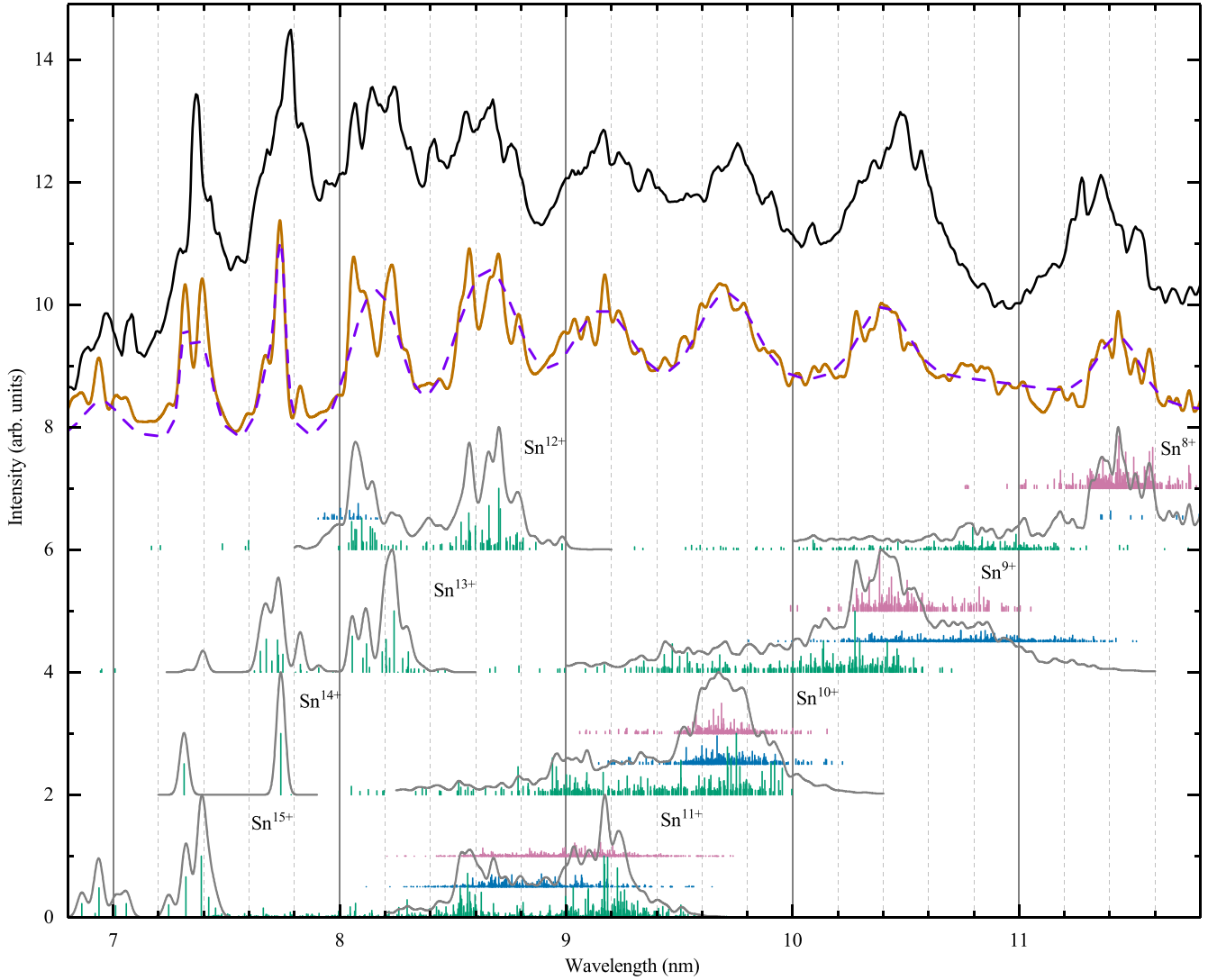


Figure 3. The topmost black line shows the short wavelength features from the experimental spectrum in figure 1 in the 7–12 nm range. The bar plots show the LTE-weighted transition rates for the three strongest transition arrays of each ion (see main text and figure 2): top, in pink, $4p^6 4d^m - 4p^6 4d^{m-1} 5f$; middle, in blue, $4p^6 4d^m - 4p^6 4d^{m-1} 6p$; bottom, in green, $4p^6 4d^m - 4p^5 4d^m 5s$. For clarity, only the top 95% of the transition rates is shown. Solid grey lines represent the envelopes for each charge state, determined by the convolution of all the transition arrays (see main text) with Gaussian curves. The sum of all the normalised envelopes, scaled with a single multiplication factor and shifted upwards with an offset for improved visibility, is shown by the dark-orange line below the experimental data. The purple dashed line is the result of using the spectral shape parameters (table 2) introduced in section 6.

with ΔE_k the energy of the k th $E1$ transition (between atomic states i and j), g the statistical weight of the transition upper level and A_k the Einstein’s coefficient.

The first moment of the distribution, μ_1 , is the $E1$ -strength-weighted average energy of the transition array. The width of the transition array is represented by the standard deviation of the distribution, i.e. the square root of the variance:

$$\sigma = \sqrt{V} = \sqrt{\mu_2 - (\mu_1)^2}. \quad (5)$$

Finally, the asymmetry of the distribution is described by the skewness α_3 [25]:

$$\alpha_3 = \frac{\mu_3 - 3\mu_1 V - (\mu_1)^3}{V^{3/2}}. \quad (6)$$

These quantities are helpful in the statistical representation of the transition array using a single skewed Gaussian curve [25]:

$$f(E) = \left\{ 1 - \frac{\alpha_3}{2} \left(\frac{E - \mu_1}{\sigma} - \frac{(E - \mu_1)^3}{3\sigma^3} \right) \right\} \exp \left[-\frac{(E - \mu_1)^2}{2\sigma^2} \right]. \quad (7)$$

An example of the application of this representation is given in figure 4 for the three main transition arrays here studied of Sn^{10+} . It illustrates well the huge simplification that is still able to capture the emission characteristics using but three parameters, which are listed for all studied transition arrays and for all investigated Sn ions in table 1. The suitability of this approach in replicating the total ion emission, as shown in

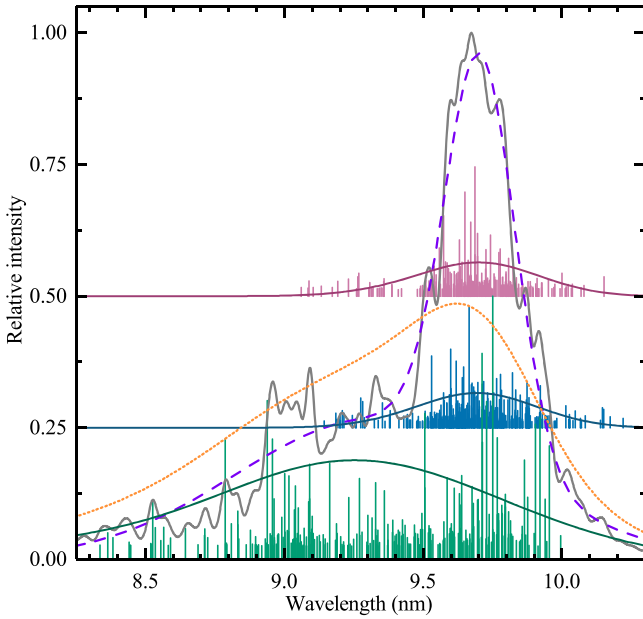


Figure 4. Details of the emission of Sn¹⁰⁺ in the 8.2–10.4 nm region. The Gaussian envelope of the emission (solid grey line, from figure 3) is mainly determined by the LTE-weighted transition rates of the three strongest transition arrays, here shown as the bar plots: in pink (top) $4p^64d^4-4p^64d^35f$, in blue (middle) $4p^64d^4-4p^64d^36p$, and in green (bottom) $4p^64d^4-4p^54d^4 5s$. Only the top 95% of the transition rates is shown. Each transition array is also represented using their respective skewed Gaussian from equation (7) with the relevant parameters from table 1, scaled accordingly to their relative gA contribution. Also shown is the total sum of the skewed Gaussians (dotted orange curve). The double Gaussian fit (purple dashed line) is determined by the spectral shape parameters in table 2. All the curves have been scaled to conserve the integral emission of the transition arrays.

figure 4 by the solid grey and dotted orange curves, is discussed in the following section.

6. Spectral shape parameters

The statistical quantities in the UTA formalism are useful to present in a concise manner the result of our FAC calculations, thus providing information about the atomic physics aspects behind the emission of these Sn ions. Whilst these values could be used to interpret experimental data, it is necessary to take into account the relevant configuration arrays by scaling their relative contributions accordingly to our LTE arguments (see figure 2(c)). Even doing so, the UTA formalism would provide limited detail in the comparison with experimentally measured emission intensities as is illustrated in figure 4. We instead provide a more straightforward and more apt comparison which can be used to identify the individual contributions of the Sn⁸⁺–Sn¹⁵⁺ charge states. We use the LTE-weighted emission intensities obtained convolving all the investigated transition arrays, i.e. the Gaussian envelopes shown in figure 3. These envelopes can be conveniently described by fitting two Gaussian curves, obtaining the very good qualitative agreement shown in figure 4. The

equation for these Gaussian fits reads

$$f(\lambda) = \sum_i A_i \exp \left[-\frac{(\lambda - \lambda_{c,i})^2}{2w_i^2} \right], \quad (8)$$

with λ being the wavelength, and $i = 1, 2$. The list of coefficients A_i , $\lambda_{c,i}$, w_i is given in table 2. No simple scaling of these parameters with temperature is obtainable. Therefore, to extend this approach to arbitrary kT values, our calculations need to be re-evaluated starting from equation (1).

Despite their artificial meaning, these parameters can be very useful to easily diagnose the emission of Sn LPPs in this wavelength region. Whilst the substructure of the emission is lost the major features and characteristics are preserved, with much more detail and accuracy than in the skewed Gaussian representation using the UTA formalism. Figure 4 shows this aspect, with the skewed Gaussian curve overestimating the contribution in the short wavelength region, thus shifting the centre of mass of the emission to shorter wavelength. The data as provided is self-consistent, in the sense that the relative amplitudes of the Gaussian fits agree with the relative contribution to the spectrum of the different ions. Potentially, combining this tool with absolutely calibrated spectral measurement could yield valuable information regarding the relative charge state populations in the plasma, and the magnitude and nature of the radiation continuum underlying the atomic line emission. These aspects are topics of future investigations.

7. Conclusions

We present the results of spectroscopic measurements in the EUV regime of the emission of the plasma created from molten Sn droplets when irradiated by a high-energy pulse from a Nd:YAG laser at its fundamental wavelength. Using the FAC, electric-dipole transition from excited configurations towards the ground states in the ions Sn⁸⁺–Sn¹⁵⁺ were investigated. Including a simple LTE scaling for the relative populations of these excited states, we have shown that the most intense contribution to the radiation in the 7–12 nm region can be attributed to the radiative decay of the core-excited configuration $[Ar]3d^{10} 4s^24p^54d^m 5s$ towards the ground state in the ions here studied. Moreover, the transition energies and rates from FAC calculations, scaled with LTE population, reproduce very well the UTAs measured experimentally. The unresolved-transition-array formalism is subsequently used to present in a concise manner the result of our atomic structure calculations. Furthermore, spectral shape parameters of double Gaussian fits to the LTE-weighted emission spectra of each Sn ion are provided, enabling straightforward interpretation of our results. These parameters also provide simplified spectral information to interpret emission from industrial plasma EUV light sources which may facilitate their optimisation. Our findings thus further the understanding of the atomic structure of Sn ions and their emissions in the context of LPP and EUV sources.

Table 1. UTA properties for all the $E1$ -contributing transition arrays investigated with the flexible atomic code for the ions Sn^{8+} to Sn^{15+} . Weighted mean energy μ_1 , standard deviation σ , skewness α_3 and total number of lines N are here presented in accordance with the UTA formalism [8] (see section 5).

UTA	Sn^{8+}				Sn^{9+}				Sn^{10+}			
	μ_1 (eV)	σ (eV)	α_3	N	μ_1 (eV)	σ (eV)	α_3	N	μ_1 (eV)	σ (eV)	α_3	N
4d–5f	107.6	2.7	–0.520	5034	118.0	2.9	–0.214	5313	128.3	3.0	0.323	3247
4d–6p	101.7	4.9	–0.576	3226	115.7	3.3	0.090	3366	128.2	2.9	0.209	2275
4d–6f	122.0	3.7	0.310	5614	136.6	5.2	0.091	5423	153.0	3.3	–1.077	2672
4p–5s	121.0	8.6	0.779	4752	128.2	8.6	0.869	6304	136.6	8.6	0.746	3897
4p–5d	169.3	7.7	–0.541	20806	180.2	8.2	–0.530	28983	189.1	10.4	–0.487	21257
4p–6s	170.3	8.7	0.741	6192	182.7	8.9	0.797	8288	194.8	8.9	1.018	5664
4p–6d	187.9	10.2	0.418	21424	202.0	10.9	0.449	29012	216.4	10.6	0.584	21331
UTA	Sn^{11+}				Sn^{12+}				Sn^{13+}			
	μ_1 (eV)	σ (eV)	α_3	N	μ_1 (eV)	σ (eV)	α_3	N	μ_1 (eV)	σ (eV)	α_3	N
4d–5f	138.0	3.1	0.314	870	148.8	2.2	–1.061	96	158.4	0.1	10.042	3
4d–6p	140.6	2.9	–0.539	644	154.3	1.5	–1.369	64	167.8	0.5	2.351	3
4d–6f	167.9	2.2	–0.606	679	182.9	1.9	–0.770	89	198.0	0.7	0.715	5
4p–5s	142.3	8.8	0.953	1620	148.4	7.5	1.371	377	155.7	6.0	1.315	37
4p–5d	195.0	11.7	–0.025	8098	201.0	11.4	0.486	1546	206.2	8.5	1.373	132
4p–6s	207.3	8.3	1.170	2112	220.8	8.0	1.283	403	233.9	7.3	1.471	38
4p–6d	230.1	9.7	0.947	8126	243.8	8.7	1.299	1564	257.8	7.1	1.628	132
UTA	Sn^{14+}				Sn^{15+}							
	μ_1 (eV)	σ (eV)	α_3	N	μ_1 (eV)	σ (eV)	α_3	N				
4p–5s	163.6	4.5	0.541	3	172.0	5.2	0.678	14				
4p–5d	213.8	4.0	1.037	7	224.0	4.7	0.790	39				
4p–6s	247.5	4.6	0.715	3	262.2	5.4	0.744	14				
4p–6d	272.5	4.3	0.932	7	288.4	5.1	0.750	40				

Table 2. Coefficients of the Gaussian fits to the envelopes of the LTE-weighted intensities for all ions investigated (see figure 3 and section 4) evaluated at the temperature kT determined from equation (2). The amplitudes A_i are scaled to agree with the relative contribution to the spectrum of each ion.

Ion	kT (eV)	A_1	$\lambda_{c,1}$ (nm)	w_1 (nm)	A_2	$\lambda_{c,2}$ (nm)	w_2 (nm)
Sn^{8+}	17.8	0.115	11.438	0.748	0.247	11.438	0.094
Sn^{9+}	21.7	0.346	10.400	0.105	0.244	10.400	0.560
Sn^{10+}	25.9	0.267	9.321	0.496	0.763	9.705	0.127
Sn^{11+}	30.3	1.000	9.155	0.136	0.641	8.647	0.158
Sn^{12+}	35.1	0.700	8.100	0.086	0.775	8.650	0.127
Sn^{13+}	40.1	0.408	7.709	0.052	0.426	8.210	0.085
Sn^{14+}	45.3	0.123	7.313	0.019	0.244	7.740	0.019
Sn^{15+}	50.9	0.234	6.950	0.078	0.628	7.380	0.055

Acknowledgements

This work has been carried out at the Advanced Research Center for Nanolithography (ARCNL), a public–private partnership of the University of Amsterdam (UvA), the Vrije Universiteit Amsterdam (VU), the Netherlands Organisation for Scientific Research (NWO) and the semiconductor equipment manufacturer ASML.

We would like to thank J C Berengut (University of New South Wales, Sydney) for the fruitful conversation during the early stages of the manuscript. We would also like

to thank T A Cohen Stuart, R Jaarsma, the AMOLF mechanical and design workshop, the software and electronics departments for technical support.



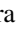

ORCID iDs

F Torretti  <https://orcid.org/0000-0001-8333-7618>

R Schupp  <https://orcid.org/0000-0002-6363-2350>

D Kurilovich  <https://orcid.org/0000-0001-7373-3318>

A Bayerle  <https://orcid.org/0000-0002-1534-7731>

J Scheers  <https://orcid.org/0000-0002-3627-8755>
 W Ubachs  <https://orcid.org/0000-0001-7840-3756>
 R Hoekstra  <https://orcid.org/0000-0001-8632-3334>
 O O Versolato  <https://orcid.org/0000-0003-3852-5227>

References

- [1] Benschop J, Banine V, Lok S and Loopstra E 2008 *J. Vac. Sci. Technol. B* **26** 2204
- [2] Banine V Y, Koshelev K N and Swinkels G H P M 2011 *J. Phys. D: Appl. Phys.* **44** 253001
- [3] Fomenkov I et al 2017 *Adv. Opt. Technol.* **6** 173
- [4] Kawasuji Y et al 2017 *SPIE Advanced Lithography* vol 10143 (International Society for Optics and Photonics) p 101432G
- [5] Bajt S, Alameda J B, Barbee T W Jr, Clift W M, Folta J A, Kaufmann B and Spiller E A 2002 *Opt. Eng.* **41** 1797
- [6] Huang Q, Medvedev V, van de Kruijs R, Yakshin A, Louis E and Bijkerk F 2017 *Appl. Phys. Rev.* **4** 011104
- [7] O'Sullivan G et al 2015 *J. Phys. B: At. Mol. Opt. Phys.* **48** 144025
- [8] Bauche J, Bauche-Arnoult C and Klapisch M 1988 *Adv. Atom. Mol. Phys.* **23** 131
- [9] Bauche J, Bauche-Arnoult C and Peyrusse O 2015 *Atomic Properties in Hot Plasmas* (Berlin: Springer)
- [10] Windberger A et al 2015 *Phys. Rev. Lett.* **114** 150801
- [11] Azarov V I and Joshi Y N 1993 *J. Phys. B: At. Mol. Opt. Phys.* **26** 3495
- [12] Svendsen W and O'Sullivan G 1994 *Phys. Rev. A* **50** 3710
- [13] Churilov S S and Ryabtsev A N 2006 *Phys. Scr.* **73** 614
- [14] Churilov S S and Ryabtsev A N 2006 *Opt. Spectrosc.* **100** 660
- [15] Churilov S S and Ryabtsev A N 2006 *Opt. Spectrosc.* **101** 169
- [16] Ryabtsev A N, Kononov É Y and Churilov S S 2008 *Opt. Spectrosc.* **105** 844
- [17] Tolstikhina I Y, Churilov S S, Ryabtsev A N and Koshelev K N 2006 *EUV Sources for Lithography* ed V Bakshi (Bellingham, WA: SPIE Press) ch 4 pp 113–48
- [18] D'Arcy R et al 2009 *Phys. Rev. A* **79** 042509
- [19] Ohashi H, Suda S, Tanuma H, Fujioka S, Nishimura H, Sasaki A and Nishihara K 2010 *J. Phys. B: At. Mol. Opt. Phys.* **43** 065204
- [20] Windberger A et al 2016 *Phys. Rev. A* **94** 012506
- [21] Colgan J, Kilcrease D, Abdallah J, Sherrill M, Fontes C, Hakel P and Armstrong G 2017 *High Energy Density Phys.* **23** 133
- [22] Torretti F et al 2017 *Phys. Rev. A* **95** 042503
- [23] Mertens B et al 2004 *Microelectron. Eng.* **73** 16
- [24] Gu M F 2008 *Can. J. Phys.* **86** 675
- [25] Bauche-Arnoult C, Bauche J and Klapisch M 1984 *Phys. Rev. A* **30** 3026
- [26] Kurilovich D, Klein A L, Torretti F, Lassise A, Hoekstra R, Ubachs W, Gelderblom H and Versolato O O 2016 *Phys. Rev. Appl.* **6** 014018
- [27] George S A, Silfvast W T, Takenoshita K, Bernath R T, Koay C-S, Shimkaveg G and Richardson M C 2007 *Opt. Lett.* **32** 997
- [28] Tanaka H, Matsumoto A, Akinaga K, Takahashi A and Okada T 2005 *Appl. Phys. Lett.* **87** 041503
- [29] Basko M 2016 *Phys. Plasmas* **23** 083114
- [30] Kramida A, Ralchenko Y, Reader J and NIST ASD Team 2015 *NIST Atomic Spectra Database (ver. 5.3)* (Gaithersburg, MD: National Institute of Standards and Technology) <http://physics.nist.gov/asd> (2 February 2016)
- [31] Henke B, Gullikson E and Davis J 1993 *At. Data. Nucl. Data Tables* **54** 181
- [32] Fujioka S et al 2005 *Phys. Rev. Lett.* **95** 235004
- [33] O'Sullivan G, Cummings A, Dong C, Dunne P, Hayden P, Morris O, Sokell E, O'Reilly F, Su M and White J 2009 *J. Phys.: Conf. Ser.* **163** 012003
- [34] Colombant D and Tonon G 1973 *J. Appl. Phys.* **44** 3524
- [35] Basko M M, Novikov V G and Grushin A S 2015 *Phys. Plasmas* **22** 053111
- [36] Su M, Min Q, Cao S, Sun D, Hayden P, O'Sullivan G and Dong C 2017 *Sci. Rep.* **7** 45212
- [37] Kilbane D and O'Sullivan G 2010 *Phys. Rev. A* **82** 062504
- [38] White J, Hayden P, Dunne P, Cummings A, Murphy N, Sheridan P and O'Sullivan G 2005 *J. Appl. Phys.* **98** 113301