

University of Groningen

Sleep disturbances in phenylketonuria

Bruinenberg, Vibeke M.; Gordijn, Margaretha; MacDonald, Anita; van Spronsen, FrancJan J.; van der Zee, Eelke

Published in:
Frontiers in Neurology

DOI:
[10.3389/fneur.2017.00167](https://doi.org/10.3389/fneur.2017.00167)

IMPORTANT NOTE: You are advised to consult the publisher's version (publisher's PDF) if you wish to cite from it. Please check the document version below.

Document Version
Publisher's PDF, also known as Version of record

Publication date:
2017

[Link to publication in University of Groningen/UMCG research database](#)

Citation for published version (APA):

Bruinenberg, V. M., Gordijn, M. C. M., MacDonald, A., van Spronsen, F. J., & Van der Zee, E. A. (2017). Sleep disturbances in phenylketonuria: An explorative study in men and mice. *Frontiers in Neurology*, 8, [167]. DOI: 10.3389/fneur.2017.00167

Copyright

Other than for strictly personal use, it is not permitted to download or to forward/distribute the text or part of it without the consent of the author(s) and/or copyright holder(s), unless the work is under an open content license (like Creative Commons).

Take-down policy

If you believe that this document breaches copyright please contact us providing details, and we will remove access to the work immediately and investigate your claim.

Downloaded from the University of Groningen/UMCG research database (Pure): <http://www.rug.nl/research/portal>. For technical reasons the number of authors shown on this cover page is limited to 10 maximum.



Sleep Disturbances in Phenylketonuria: An Explorative Study in Men and Mice

Vibeke M. Bruinenberg¹, Marijke C. M. Gordijn^{2,3}, Anita MacDonald⁴, Francjan J. van Spronsen⁵ and Eddy A. Van der Zee^{1*}

¹Molecular Neurobiology, Groningen Institute for Evolutionary Life Sciences (GELIFES), University of Groningen, Groningen, Netherlands, ²Chrono@work B.V., Groningen, Netherlands, ³Chronobiology, Groningen Institute for Evolutionary Life Sciences (GELIFES), University of Groningen, Groningen, Netherlands, ⁴Birmingham Children's Hospital, Birmingham, UK, ⁵Beatrix Children's Hospital, University Medical Center Groningen, Groningen, Netherlands

Sleep problems have not been directly reported in phenylketonuria (PKU). In PKU, the metabolic pathway of phenylalanine is disrupted, which, among others, causes deficits in the neurotransmitters and sleep modulators dopamine, norepinephrine, and serotonin. Understanding sleep problems in PKU patients may help explain the pathophysiology of brain dysfunction in PKU patients. In this explorative study, we investigated possible sleep problems in adult treated PKU patients and untreated PKU mice. In the PKU patients, sleep characteristics were compared to healthy first degree relatives by assessment of sleep disturbances, sleep-wake patterns, and sleepiness with the help of four questionnaires: Holland sleep disorder questionnaire, Pittsburgh sleep quality index, Epworth sleepiness scale, and Munich Chronotype Questionnaire. The results obtained with the questionnaires show that PKU individuals suffer more from sleep disorders, a reduced sleep quality, and an increased latency to fall asleep and experience more sleepiness during the day. In the PKU mice, activity patterns were recorded with passive infrared recorders. PKU mice switched more often between active and non-active behavior and shifted a part of their resting behavior into the active period, confirming that sleep quality is affected as a consequence of PKU. Together, these results give the first indication that sleep problems are present in PKU. More detailed future research will give a better understanding of these problems, which could ultimately result in the improvement of treatment strategies by including sleep quality as an additional treatment target.

Keywords: inherited metabolic disorder, *Pah^{enu2}* mice, phenylketonuria patients, phenylketonuria mice, neurotransmitters, sleep disorders

OPEN ACCESS

Edited by:

Birendra N. Mallick,
Jawaharlal Nehru University, India

Reviewed by:

Liborio Parrino,
University of Parma, Italy
Axel Steiger,
Max Planck Institute of
Psychiatry, Germany

*Correspondence:

Eddy A. Van der Zee
e.a.van.der.zee@rug.nl

Specialty section:

This article was submitted to Sleep and Chronobiology, a section of the journal Frontiers in Neurology

Received: 10 February 2017

Accepted: 07 April 2017

Published: 26 April 2017

Citation:

Bruinenberg VM, Gordijn MCM, MacDonald A, van Spronsen FJ and Van der Zee EA (2017) Sleep Disturbances in Phenylketonuria: An Explorative Study in Men and Mice. *Front. Neurol.* 8:167. doi: 10.3389/fneur.2017.00167

INTRODUCTION

In 2014, Gadoth and Oksenberg reviewed the incidence of sleep and sleep disorders in patients with inherited metabolic disease (IMD). Although their review focused on sleep-related breathing disorders among severely affected subjects with IMD, the general title suggested that sleep problems could be missed or underestimated in these conditions. A metabolic disease in which brain modulators of sleep are severely affected but attention for sleep research is very limited is phenylketonuria

(PKU). PKU is caused by an inborn error in the metabolic pathway of phenylalanine (Phe) that disrupts the conversion of Phe to tyrosine. As a result, Phe concentrations build up in blood and brain and the ability to intrinsically produce the dopamine precursor tyrosine is lost. These changes do not solely affect the metabolism of dopamine. Also, reduced concentrations of noradrenaline and serotonin are found in PKU patients (1, 2) and in the PKU mouse model (3). These neurotransmitters are known to be important regulators of sleep, wakefulness, and switches between these states (4, 5). Nevertheless, these abnormalities in neurotransmitter availability are not specifically linked to possible sleep problems in PKU research. In PKU research, a few studies have indirectly investigated sleep regulators or sleep. First, in treated and untreated PKU patients, sleep-EEG measurements indicate differences in the number of sleep spindles despite similar REM and non-REM distribution compared to healthy controls (6). Second, in early-treated PKU infants (4–18 weeks old), EEG measurements show differences in the development of sleep compared to healthy controls (7). Finally, in the PKU mouse model, high levels of orexin A (hypocretin 1) were reported, a neuropeptide that is associated with wakefulness (8, 9). This made the authors suggest hyperactivity in PKU, however, the exact consequence of these increased levels are not clear while hyperactivity is not consistently described in PKU mice (10).

Currently, PKU treatment remains suboptimal in which disturbances in executive functions, mood, social cognition, and in internalizing problems, such as depression and anxiety, are described in early-treated PKU patients (11, 12). As it is well established that altered sleep negatively influences cognitive performance, most notably in the domains of executive functioning (13–15), and mood by impacting feelings of depression, anxiety, and stress (16, 17), sleep-related issues could very well serve as an explanation of the PKU brain dysfunction despite diet and drug treatment.

Understanding the presence and severity of sleep problems in PKU patients and its pathophysiology could ultimately result in the improvement of treatment strategies by including sleep quality as an additional treatment target. Therefore, the aim of this explorative study was to investigate the presence of sleep disturbances in PKU patients with questionnaires together with analyses of rest/wake patterns in PKU mice, indirectly reflecting sleep characteristics which could confirm the PKU-specific nature of putative sleep issues in PKU patients. As sleep is influenced by, among others, genetic factors (18–21), first-degree relatives (FDR) of PKU patients and wild-type (WT) littermates of each genetic strain of the PKU mouse model were used as controls.

MATERIALS AND METHODS

PKU Patients

Subjects

In the summer of 2016, participants for this study were recruited by distributing a link to an electronic survey to subjects associated with the Dutch PKU patient organization. PKU patients and FDR, who did not do shift work in the past 3 months, were asked to fill out four questionnaires with 10 additional questions (date

of birth, zip code, gender, height, bodyweight, PKU or control, treatment of PKU, other health issues, smoking, and the use of sleep-promoting drugs). All participants were informed about the scientific purpose of the study and agreed to participate. They completed the questionnaires completely anonymous. To ensure that the questionnaires were not completed by the same individuals more than once, the submissions were checked for uniqueness, focusing on date of birth and IP address. In total, 47 subjects, 25 PKU patients and 23 controls, participated.

Sleep Questionnaires

Four validated questionnaires were included in the survey: (1) Holland Sleep Disorders Questionnaire (HSDQ) (22); 40 items, (2) Pittsburgh Sleep Quality Index (PSQI) (23); 19 items, (3) Epworth Sleepiness Questionnaire (ESS) (24); 8 items, and (4) Munich Chronotype Questionnaire (MCTQ) (25); 16 items. First, the HSDQ gives a general score to identify the possible occurrence of a sleep disorder and can differentiate between six main categories of sleep disorders [insomnia, parasomnia, circadian rhythm sleep disorders (CRSD), hypersomnia, sleep-related movement disorders, such as for instance restless legs syndrome, and sleep-related breathing disorder] (22). Second, for the PSQI, seven component scores can be derived (subjective sleep quality, sleep latency, sleep duration, habitual sleep efficiency, sleep disturbances, use of sleep medication, and daytime dysfunction) and computed to a global score (23). Third, the ESS is used to examine sleepiness during the day (for instance during reading) (24). Finally, the MCTQ was used to identify chronotype (the preferred timing of sleep) calculated by taking the mid-point of sleep on free days corrected for the sleep debt acquired during working days (26).

PKU Mouse Study

To investigate the rest/wake pattern in PKU mice, the home-cage activity of adult (4–7 months) WT and PKU mice of BTBR and C57Bl/6 (B6) background was monitored. Both genetic strains of the PKU mouse model have a point mutation in the gene encoding for phenylalanine hydroxylase causing Phe to rise in blood and brain (10). The PKU model was originally described for the BTBR background but the model was latter crossed back on to the C57Bl/6J background. Currently, both genetic strains are used in PKU research. In-house heterozygous mating pairs were used to breed the following groups of mice: BTBT WT, BTBR PKU, B6 WT, and B6 PKU. These mice were weaned on postnatal day 28, and genotype was established with quantitative PCR (10). The experiment consisted of a habituation phase and a data-acquiring phase. After a 7-day habituation phase, the activity of individual housed mice (cage: 33 cm × 15 cm × 14 cm with nesting material and paper role) were monitored for 7 days with passive infrared detectors (PIR). During the whole experiment, animals were on a 12/12 light/dark cycle and had *ad libitum* access to water and normal chow (RMH-B 2181, ABdiets, Phe: 8.7 g/kg). Data were analyzed with ACTOVIEW [made in-house, described in Ref. (27)]. This program calculated the average daily activity, diurnality [(Sum activity light phase – sum activity dark phase)/total activity], and fragmentation (28) from the files produced by the circadian activity monitor system (CAMS) collected from the PIR.

Statistics

The statistical analysis was executed with the statistical software IBM SPSS Statistics for Windows, Version 22.0 (Armonk, NY, USA: IBM Corp.). Within this program, the Shapiro–Wilk was used to test normality of the data. The activity of the mice was normally distributed, and a multi-variate ANOVA was used to test the factors group and gender of overall activity, fragmentation, and diurnality. Differences in group characteristics in the patient study were not normally distributed and, therefore, tested with the non-parametric Mann–Whitney *U* test. The chronotype score of the MCTQ, normally distributed, was tested with a univariate ANOVA for group. Age and gender were included as cofactors. The ordinal nature of the HSDQ, PSQI, and ESS scores, made it not possible to test confounding factors parametrically. Therefore, gender and age were explored with generalized linear models, using an ordinal model. Differences in the frequency of occurrence of sleep disorders were also tested with a generalized linear model, using a binary model. Non-parametric Levene's test was used to test the homogeneity of the data.

RESULTS

PKU Patients

Subjects

This study is a pilot study serving as a proof-of-concept for sleep-related issues due to PKU. For this reason, individuals were included when they correctly filled out at least one of the questionnaires. Not all questionnaires were correctly filled out by all subjects, which resulted in different group characteristics for each questionnaire (Table 1). For all questionnaire responses, the FDR controls were significantly older than the PKU subjects [HSDQ: $p < 0.05$, PSQI: $p < 0.05$, Epworth Sleepiness Questionnaire (ESS): $p < 0.05$, MCTQ: $p < 0.05$] but no differences were found in BMI (HSDQ: $p = 0.68$, PSQI: $p = 0.92$, ESS: $p = 0.99$, MCTQ: $p = 0.90$). Furthermore, no significant differences were found in gender distribution of the groups [HSDQ: $t(44) = -0.603$, $p = 0.55$, PSQI: $t(35) = 0.172$, $p = 0.87$, ESS: $t(37) = 0.143$, $p = 0.89$, MCTQ: $t(39) = -0.260$, $p = 0.80$]. One FDR control was excluded because she used several sleep-promoting drugs (Trazodon and zolpidem tartrate).

Frequency of Sleep Disorders

The global score of the HSDQ is used to identify the presence of a sleep disorder with an overall accuracy of 88% ($\kappa: 0.75$) (22). In PKU patients, 48% had a global score above the cutoff of 2.02, indicative of a sleep disorder, compared to 19% of FDR controls [Figure 1A; $b = 1.367$, Wald $\chi^2(1, N = 46) = 3.983$, $p < 0.05$]. Especially, among the six main sleep disorder categories, PKU patients had a higher score for both insomnia and CRSD [Figure 1B: $b = -1.527$, Wald $\chi^2(1, N = 46) = 7.626$, $p < 0.05$, Figure 1C: $b = -1.593$, Wald $\chi^2(1, N = 46) = 8.115$, $p < 0.05$, respectively], but not for the other four categories [parasomnia; $b = -0.985$, Wald $\chi^2(1, N = 46) = 2.941$, $p = 0.086$, hypersomnia; $b = -0.985$, Wald $\chi^2(1, N = 46) = 3.287$, $p = 0.070$, restless legs syndrome; $b = -0.696$, Wald $\chi^2(1, N = 46) = 1.757$, $p = 0.185$, and sleep-related breathing disorder; $b = -0.693$, Wald $\chi^2(1, N = 46) = 1.688$, $p = 0.194$]. Age and gender did not significantly contribute to these models. These results reveal a higher frequency of sleep disorders, more specifically insomnia and CRSD, in PKU patients.

Sleep Quality

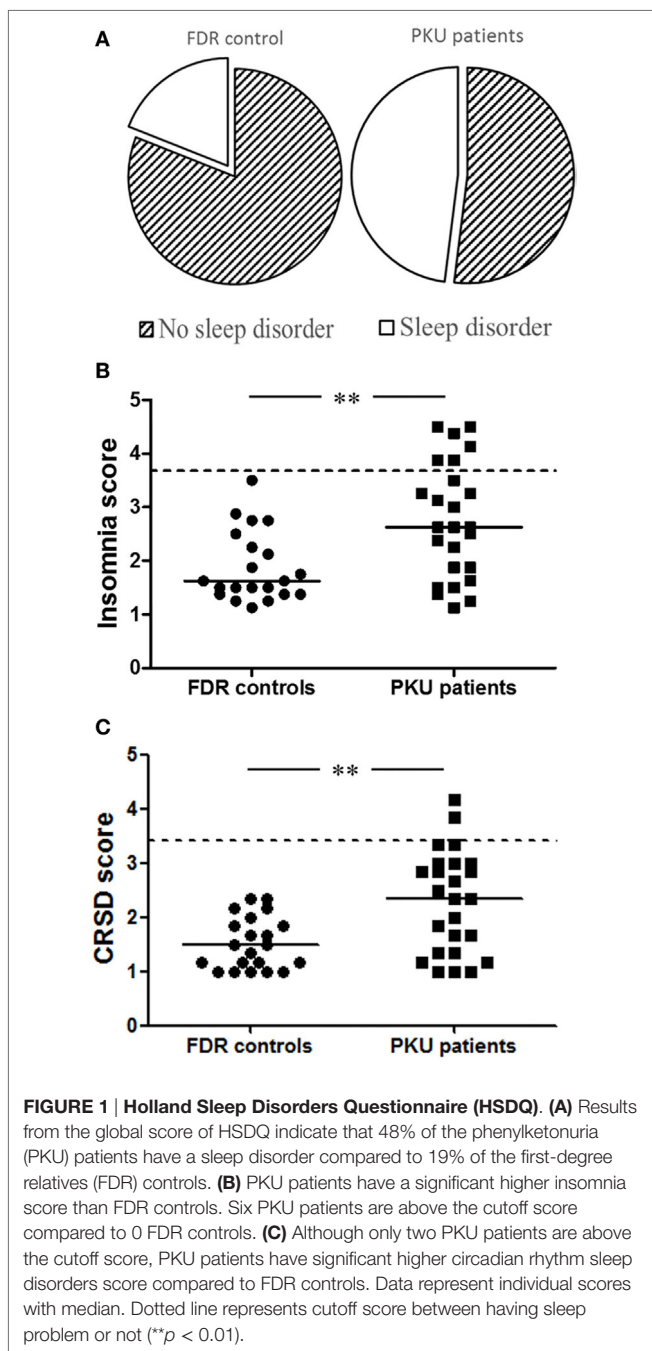
The global PSQI, comprised seven sleep-related components, is used to classify poor (>5) and good sleepers (≤ 5). This global score was significantly higher in the PKU patients of which more people were classified as poor sleepers (57%) compared to the FDR controls of which 25% were classified as poor sleepers [Figure 2A: $b = -1.674$, Wald $\chi^2(1, N = 37) = 7.102$, $p < 0.05$]. Within the global score, two component scores differed between PKU patients and FDR controls. The first was the component score for latency to fall asleep which was significantly increased in PKU patients [FDR: 0.44 ± 0.63 , PKU: 1.43 ± 0.98 , $b = -2.306$, Wald $\chi^2(1, N = 37) = 9.733$, $p < 0.05$]. The second one was the component score for subjective sleep quality. This score was computed from the question in which subjects could indicate their quality of sleep during the past month on a scale of very good (score 0) to very bad (score 3). This score was significantly higher in PKU patients than in the FDR controls [FDR: 0.69 ± 0.60 , PKU: 1.38 ± 0.92 , $b = -1.655$, Wald $\chi^2(1, N = 37) = 5.516$, $p < 0.05$]. Age and gender did not significantly contribute to

TABLE 1 | Subject characteristics.

	HSDQ		PSQI		ESS		MCTQ	
	PKU	FDR-control	PKU	FDR-control	PKU	FDR-control	PKU	FDR-control
Number	25	21	21	15	22	17	24	17
Age	29.2 ± 8.8	44.2 ± 10.1	30.1 ± 9.0	46.6 ± 10	29.6 ± 9.1	45.9 ± 10.1	29.0 ± 8.9	45.9 ± 10.1
BMI	24.1 ± 4.3	25.0 ± 5.1	24.5 ± 4.3	24.8 ± 5.6	24.6 ± 4.2	24.6 ± 4.2	24.4 ± 4.1	24.6 ± 4.2
Gender (F/M)	17/8	16/5	15/6	11/4	16/6	12/5	16/8	12/5
Smoking	4	1	4	1	4	1	4	1
Health issues	5	0	4	0	4	0	5	0
Sleep-promoting drugs	5	0	5	0	5	0	5	0
Kuvan®	3		2		2		3	
Kuvan® + protein restricted	4		3		3		3	
Protein restricted	22		16		17		18	

Data are presented as mean ± SD.

F, female; M, male; HSDQ, Holland Sleep Disorders Questionnaire; PSQI, Pittsburgh Sleep Quality Index; ESS, Epworth Sleepiness Questionnaire; MCTQ, Munich Chronotype Questionnaire; PKU, phenylketonuria; FDR-control, first-degree relatives-control.



these models. These results suggest that sleep quality is reduced in PKU patients compared to FDR controls.

Sleepiness during the Day

In the ESS, the participant subjectively rate the chance of dozing off during eight situations from “none” (score 0) to “high” (score 3). This score is significantly higher in PKU patients than FDR controls [Figure 2B; $b = -1.608$, Wald $\chi^2(1, N = 39) = 6.597$, $p < 0.05$]. A main effect of age and gender did not contribute significantly to the model. These results suggest that PKU patients experience more sleepiness during daytime.

Chronotype

In the MCTQ, the sleep schedules of the participants on working and non-working days were asked. From these data, we could calculate chronotype, defined as the mid-sleep on free days corrected for the potential sleep debt acquired during the working days (26). Chronotype is dependent on age and gender (26), therefore, statistical analysis included age and gender as a cofactor. No significant differences were found between chronotype scores in PKU patients and FDR controls or for any of the cofactors in the complete model [group: $F(1,37) = 1.287$, $p = 0.26$, gender: $F(1,37) = 0.954$, $p = 0.34$, age: $F(1,37) = 1.941$, $p = 0.17$].

PKU Mice

Rest/Wake Patterns

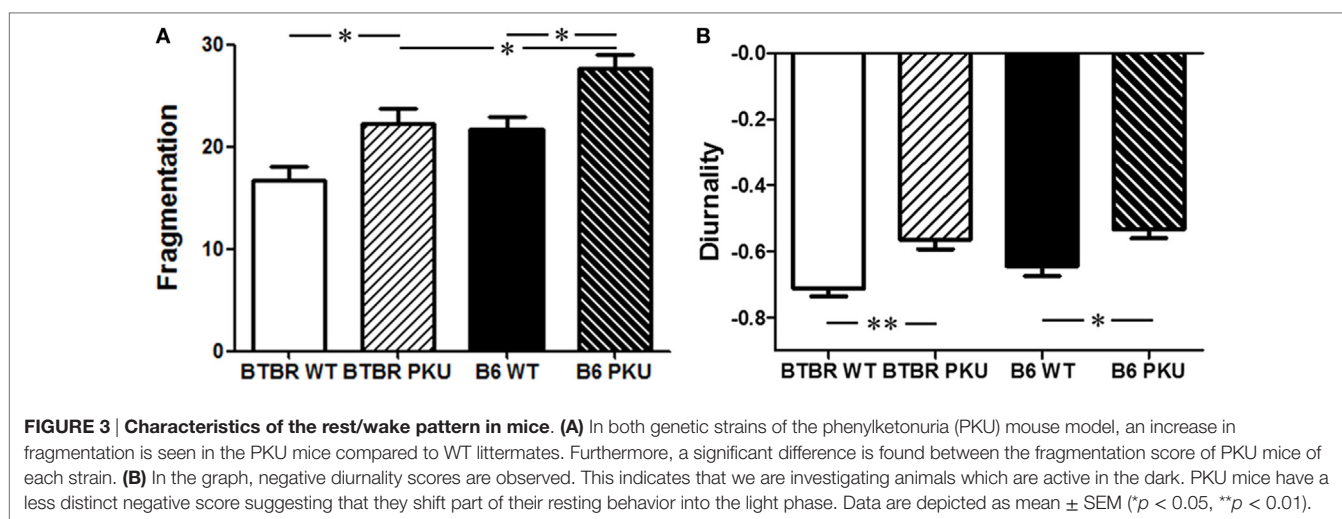
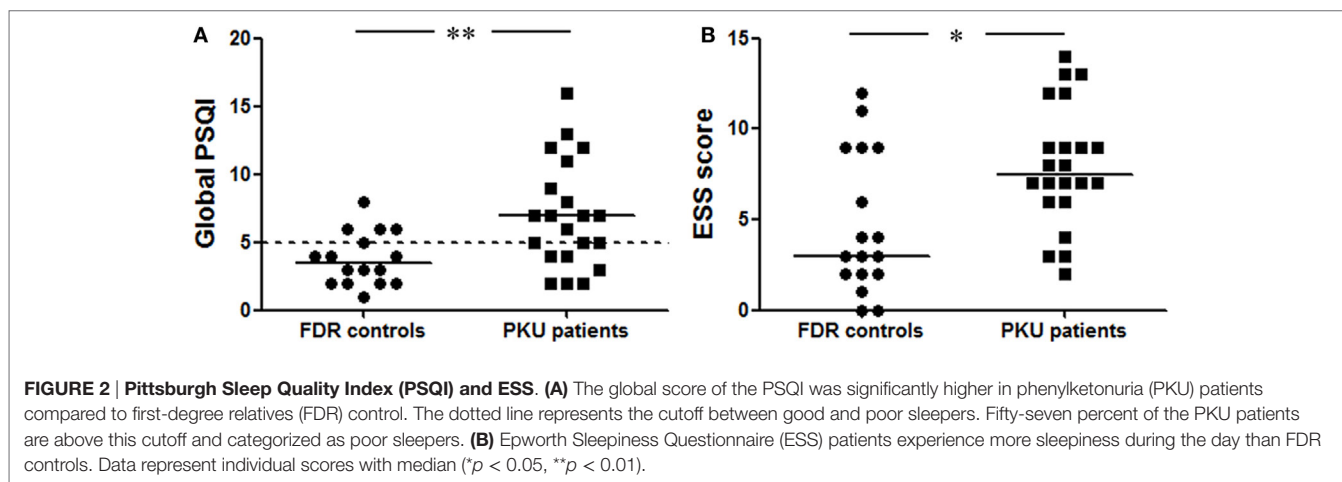
No main or interaction effects were observed for sex in all parameters, therefore, data of males and females were grouped. The fragmentation score is indicative of the frequency that active behavior is switched to non-active behavior and *vice versa*. In PKU mice, in both strains, the fragmentation score was increased compared to WT [Figure 3A; $F(3,56) = 10.803$, $p < 0.05$, BTBR $p < 0.05$, $p < 0.05$]. Although differences were found in overall activity between the WT's of each strain [BTBR WT: $3,162.46 \pm 1,239.24$, B6 WT: $2,193.69 \pm 785.91$ (mean \pm SD) $F(3,56) = 3.858$, $p < 0.05$, BTBR WT vs. B6 WT $p = 0.019$], the increase in fragmentation score found in PKU mice did not coincide with a change in overall activity (BTBR PKU: $2,655.42 \pm 605.23$, B6 PKU: $2,306.90 \pm 860.06$, BTBR $p = 0.67$, B6 $p = 1.000$). However, a shift did occur in the timing of the rest/active behavior. The negative diurnality score, reflecting night activity in animals, became less negative in PKU mice [Figure 3B; $F(3,56) = 8.235$, $p < 0.001$, BTBR $p < 0.05$, B6 $p < 0.05$]. These results reveal that PKU mice have increased fragmentation and a shift in diurnality (more inactive in active phase).

DISCUSSION

In this explorative study, we investigated sleep characteristics in PKU patients with questionnaires and analyzed the rest/wake patterns in PKU mice. In the PKU patients study, we showed that PKU patients compared to FDR controls have more sleep disorders, a reduced sleep quality, an increased latency to fall asleep, and experience more sleepiness during the day. In the PKU mice, we found an increase in fragmentation and a shift in diurnality. The increase in fragmentation indicated that the PKU mice switch more often between active and non-active behavior. This score did not coincide with changes in overall activity. In addition, PKU mice shift a part from their resting behavior into the active phase (a shift in diurnality). Both experiments strongly support the hypothesis that sleep is affected in PKU. This seems to be directly related to the disorders as the deficits were found in both PKU mouse strains despite their genetic differences and cognitive sensitivity to the PKU condition (10).

Study Limitations

Sleep is influenced by, among others, genetic factors, age, and gender (18–21). For this reason, this study recruited FDR of PKU patients as control group. No differences were found in gender



distributions between the groups, but differences were found in age between FDR controls and PKU patients. Although we recognize these limitations, we believe that it does not hamper our results obtained in the first three questionnaires (HSDQ, PSQI, ESS) for the following reason. Literature shows either no effect or a deterioration of sleep with aging. For example, the PSQI is not affected by age (29). The ESS score is influenced by an age \times gender interaction, wherein females tend to have higher scores between 0 and 39 age group compared to males (30). Around the ages 40–49, the ESS score of males deteriorates reaching the same ESS score as females. Therefore, the ESS score is either higher or stays constant with increasing age (30). This implies that the higher scores found in the younger PKU patients compared to the older FDR controls are contrary to what would be expected and likely reflect a real indication of sleep problems in PKU patients. Moreover, no significant effect of age was found in our study.

Sleep Characteristics Are Altered in PKU

The different measurements of sleep used in this study reveal a variety of sleep problems and show some specifically affected characteristics of sleep. In the HSDQ, PKU patients show a higher

incidence in sleep disorders, but only in the main categories insomnia and CRSD scores were higher in PKU patients than in FDR controls. CRSD were changed to circadian rhythm sleep–wake disorders (CRSWD) in the third edition of the International classification of sleep disorders (31). CRSWD are sleep disorders grouped under dyssomnias, a group of sleep disorders, which show insomnia, excessive sleepiness, or difficulty initiating or maintaining sleep (31). In the current study, we found an increased score for insomnia and an increased sleepiness during the day in the ESS in PKU patients, supporting the idea that PKU patients experience problems specific for this cluster of sleep disorders. CRSWD are disorders related to the timing of sleep (31). Some are a consequence of external circumstances, e.g., shift work or jet lag, others have potentially a more internal, neurological basis, e.g., delayed sleep phase syndrome (DSPS). In DSPS, the latency to fall asleep opposed to the desired time to fall asleep is delayed. DSPS patients experience difficulties to shift their sleep/wake pattern to an earlier time point in response to environmental time cues, for example traveling from Europe to Asia, and do not experience sleepiness when they are able to sleep at their desired time, as is possible for instance during a holiday or vacation period. In this

study, we showed that PKU patients report an increased latency to fall asleep in the PSQI. However, we did not see a difference in the mid-sleep on non-working days when age was a cofactor. This could be because mid-sleep is strongly influenced by age and the age was not distributed evenly over the full width of both groups (26). Therefore, an important future direction is to compare age-matched controls to PKU patients. Further research in PKU should focus on (1) more objective measurements of sleep, such as polysomnography or sleep-wake rhythm analysis with (2) phase shift experiments in PKU mice to identify problems in shifting sleep/wake patterns (and neurological substrates), (3) monitoring sleepiness during the day specifically during holidays and (4) core body temperature and dim-light melatonin rhythm monitoring to investigate if PKU patients experience a blunted or delayed internal rhythm of physiological markers.

The Switch between Sleep and Wakefulness Is Defective in PKU

The HSDQ identifies sleep disorders and attribute certain scores to six symptom clusters. These clusters may be due to different sleep disorders, possibly with different pathophysiological mechanism. For instance, the comorbidity of insomnia with other sleep disorders is very high (22). The PKU mouse study did identify a more specific aspect of sleep, namely increased fragmentation. In general, an increased fragmentation score indicates an increase in switching behavior. Switching between sleep and wakefulness is thought to be regulated by a flip-flop switch that results from mutual inhibition of sleep-promoting pathways and wake-promoting pathways (32). Several cholinergic and monoaminergic projections are important in these pathways, such as serotonin, norepinephrine, and dopamine (32). As these latter neurotransmitters are affected in PKU mice (and in untreated PKU patients), it could be that the increased fragmentation score is a consequence of disruptions in this switch. In early-treated patients on diet, neurotransmitter deficiencies in dopamine and serotonin are still present (2). These deficiencies could possibly affect the switch between sleep and wakefulness and cause fragmentation of the sleep/wake rhythm in PKU patients, more difficulty falling asleep and as a consequence daytime sleepiness.

REFERENCES

- McKean CM. The effects of high phenylalanine concentrations on serotonin and catecholamine metabolism in the human brain. *Brain Res* (1972) 47:469–76. doi:10.1016/0006-8993(72)90653-1
- Burlina AB, Bonafé L, Ferrari V, Suppiej A, Zucchello F, Burlina AP. Measurement of neurotransmitter metabolites in the cerebrospinal fluid of phenylketonuric patients under dietary treatment. *J Inher Metab Dis* (2000) 23:313–6. doi:10.1023/A:1005694122277
- van Vliet D, Bruinenberg VM, Mazzola PN, van Faassen MH, de Blaauw P, Pascucci T, et al. Therapeutic brain modulation with targeted large neutral amino acid supplements in the Pah-enu2 phenylketonuria mouse model. *Am J Clin Nutr* (2016) 104:1292–300. doi:10.3945/ajcn.116.135996
- Holst SC, Valomon A, Landolt H-P. Sleep pharmacogenetics: personalized sleep-wake therapy. *Annu Rev Pharmacol Toxicol* (2016) 56:577–603. doi:10.1146/annurev-pharmtox-010715-103801

Conclusion

This explorative study is the first to investigate sleep disturbances both in PKU patients and PKU mice. In PKU patients, we demonstrate more sleep disorders, a reduced sleep quality, an increased latency to fall asleep, and more sleepiness during the day. We show in PKU mice an increased fragmentation and a shift in diurnality. These results produce the first evidence to suggest that sleep problems occur in PKU. The resulting complaints associated with altered sleep are comparable to the cognitive symptoms described for early and continuously treated PKU patients. More detailed future research will give a better understanding and further identify sleep problems in PKU, which could ultimately result in the improvement of treatment strategies by including sleep quality as an additional treatment target.

ETHICS STATEMENT

The Medical Ethics Review Committee of the University of Groningen concluded that the Medical Research Involving Subjects Act did not apply to this study. All proceedings concerning the mouse study were carried out in accordance to the Guide for the Care and Use of Laboratory Animals of the National Institutes of Health (The ARRIVE Guidelines Checklist) approved by the Institutional Animal Care and Use Committee of the University of Groningen.

AUTHOR CONTRIBUTIONS

For the patient study, all authors designed the study. MG made the electronic survey. Data analysis was performed by MG and VB. For the mouse study, EZ and VB designed the study. VB performed the study and the analysis of the data. All authors contributed substantially to the interpretation of the data and drafting the manuscript.

ACKNOWLEDGMENTS

The authors would like to thank Dr. Marina C. Giménez for her help with the electronic survey.

- Eban-Rothschild A, Rothschild G, Giardino WJ, Jones JR, de Lecea L. VTA dopaminergic neurons regulate ethologically relevant sleep-wake behaviors. *Nat Neurosci* (2016) 19:1356–66. doi:10.1038/nn.4377
- Schulte FJ, Kaiser HJ, Engelbart S, Bell EF, Castell R, Lenard HG. Sleep patterns in hyperphenylalaninemia: a lesson on serotonin to be learned from phenylketonuria. *Pediatr Res* (1973) 7:588–99. doi:10.1203/00006450-197306000-00007
- De Giorgis GF, Nonnis E, Crocioni F, Gregori P, Rosini MP, Leuzzi V, et al. Evolution of daytime quiet sleep components in early treated phenylketonuric infants. *Brain Dev* (1996) 18:201–6. doi:10.1016/0387-7604(96)00005-8
- Surendran S, Rady PL, Szucs S, Michals-Matalon K, Tying SK, Matalon R. High level of orexin A observed in the phenylketonuria mouse brain is due to the abnormal expression of prepro-orexin. *Biochem Biophys Res Commun* (2004) 317:522–6. doi:10.1016/j.bbrc.2004.03.079
- Surendran S, Campbell GA, Tying SK, Matalon K, McDonald JD, Matalon R. High levels of orexin A in the brain of the mouse model for phenylketonuria:

- possible role of orexin A in hyperactivity seen in children with PKU. *Neurochem Res* (2003) 28:1891–4. doi:10.1023/A:1026184127689
10. Bruinenberg VM, van der Goot E, van Vliet D, de Groot MJ, Mazzola PN, Heiner-Fokkema MR, et al. The behavioral consequence of phenylketonuria in mice depends on the genetic background. *Front Behav Neurosci* (2016) 10:233. doi:10.3389/fnbeh.2016.00233
 11. Jahja R, van Spronsen FJ, de Sonnevile LMJ, van der Meere JJ, Bosch AM, Hollak CEM, et al. Social-cognitive functioning and social skills in patients with early treated phenylketonuria: a PKU-COBESO study. *J Inherit Metab Dis* (2016) 39:355–62. doi:10.1007/s10545-016-9918-0
 12. Waisbren SE, Noel K, Fahrback K, Cella C, Frame D, Dorenbaum A, et al. Phenylalanine blood levels and clinical outcomes in phenylketonuria: a systematic literature review and meta-analysis. *Mol Genet Metab* (2007) 92:63–70. doi:10.1016/j.ymgme.2007.05.006
 13. Banks S, Dinges DF. Behavioral and physiological consequences of sleep restriction. *J Clin Sleep Med* (2007) 3:519–28.
 14. Couyoumdjian A, Sdoia S, Tempesta D, Curcio G, Rastellini E, DE Gennaro L, et al. The effects of sleep and sleep deprivation on task-switching performance. *J Sleep Res* (2010) 19:64–70. doi:10.1111/j.1365-2869.2009.00774.x
 15. Goel N, Rao H, Durmer JS, Dinges DF. Neurocognitive consequences of sleep deprivation. *Semin Neurol* (2009) 29:320–39. doi:10.1055/s-0029-1237117
 16. Short MA, Louca M. Sleep deprivation leads to mood deficits in healthy adolescents. *Sleep Med* (2015) 16:987–93. doi:10.1016/j.sleep.2015.03.007
 17. Meerlo P, Havekes R, Steiger A. Chronically restricted or disrupted sleep as a causal factor in the development of depression. *Curr Top Behav Neurosci* (2015) 25:459–81. doi:10.1007/7854_2015_367
 18. Lind MJ, Aggen SH, Kirkpatrick RM, Kendler KS, Amstadter AB. A longitudinal twin study of insomnia symptoms in adults. *Sleep* (2015) 38:1423–30. doi:10.5665/sleep.4982
 19. Barclay NL, Gregory AM. Quantitative genetic research on sleep: a review of normal sleep, sleep disturbances and associated emotional, behavioural, and health-related difficulties. *Sleep Med Rev* (2013) 17:29–40. doi:10.1016/j.smr.2012.01.008
 20. Gottlieb DJ, O'Connor GT, Wilk JB. Genome-wide association of sleep and circadian phenotypes. *BMC Med Genet* (2007) 8:S9. doi:10.1186/1471-2350-8-S1-S9
 21. Paine S-J, Gander PH, Harris R, Reid P. Who reports insomnia? Relationships with age, sex, ethnicity, and socioeconomic deprivation. *Sleep* (2004) 27:1163–9.
 22. Kerkhof GA, Geuke MEH, Brouwer A, Rijsman RM, Schimsheimer RJ, Van Kasteel V. Holland sleep disorders questionnaire: a new sleep disorders questionnaire based on the international classification of sleep disorders-2. *J Sleep Res* (2013) 22:104–7. doi:10.1111/j.1365-2869.2012.01041.x
 23. Buysse DJ, Reynolds CE, Monk TH, Berman SR, Kupfer DJ. The Pittsburgh sleep quality index: a new instrument for psychiatric practice and research. *Psychiatry Res* (1989) 28:193–213. doi:10.1016/0165-1781(89)90047-4
 24. Johns MW. Reliability and factor analysis of the Epworth Sleepiness Scale. *Sleep* (1992) 15:376–81.
 25. Roenneberg T, Kuehnle T, Juda M, Kantermann T, Allebrandt K, Gordijn M, et al. Epidemiology of the human circadian clock. *Sleep Med Rev* (2007) 11:429–38. doi:10.1016/j.smr.2007.07.005
 26. Roenneberg T, Kuehnle T, Pramstaller PP, Ricken J, Havel M, Guth A, et al. A marker for the end of adolescence. *Curr Biol* (2004) 14:R1038–9. doi:10.1016/j.cub.2004.11.039
 27. Mulder C, Van Der Zee EA, Hut RA, Gerkema MP. Time-place learning and memory persist in mice lacking functional Per1 and Per2 clock genes. *J Biol Rhythms* (2013) 28:367–79. doi:10.1177/0748730413512958
 28. van Someren EJ, Hagebeuk EE, Lijzenga C, Scheltens P, de Rooij SE, Jonker C, et al. Circadian rest-activity rhythm disturbances in Alzheimer's disease. *Biol Psychiatry* (1996) 40:259–70. doi:10.1016/0006-3223(95)00370-3
 29. Grandner MA, Kripke DF, Yoon I-Y, Youngstedt SD. Criterion validity of the Pittsburgh Sleep Quality Index: investigation in a non-clinical sample. *Sleep Biol Rhythms* (2006) 4:129–39. doi:10.1111/j.1479-8425.2006.00207.x
 30. Boyes J, Drakatos P, Jarrold I, Smith J, Steier J. The use of an online Epworth Sleepiness Scale to assess excessive daytime sleepiness. *Sleep Breath* (2016):1–8. doi:10.1007/s11325-016-1417-x
 31. American Academy of Sleep Medicine. *International Classification of Sleep Disorders-Third Edition (ICSD-3)*. Chicago, IL: American Academy of Sleep Medicine (2014).
 32. Saper CB, Fuller PM, Pedersen NP, Lu J, Scammell TE. Sleep state switching. *Neuron* (2010) 68:1023–42. doi:10.1016/j.neuron.2010.11.032
- Conflict of Interest Statement:** VB has received grant funding from Nutricia MG is CEO of Chrono@work. A company specialized in sleep research. In addition, this author has received research funding from Philips. AM has received research funding and honoraria from Nutricia, Vitaflo International, Merck Serono, chaired/chairs the European Nutrition Expert Panel (Merck Serono international and later Biomarin), was/is a member of the Sapropterin Advisory Board (Merck Serono international, Biomarin), and is a member of the Advisory Boards Element (Danone-Nutricia) and Arla Foods International. FS is a member of various Scientific Advisory Boards of (in past Merck Serono,) Biomarin, Applied Pharma Research, ARLA Food, and Danone and has received grants for research purpose of both Merck Serono, Biomarin, Sobi and Nutricia. Furthermore, he has received consultation fees and speaker relation fees from Merck Serono, Biomarin, Nutricia, and Vitaflo. He has assisted in the design of clinical studies using products manufactured by Biomarin. He chairs the Scientific Advisory Board of the Dutch and the European PKU society and is the chairman of the group developing guidelines on PKU in Europe. EZ has received grant funding from Nutricia and awards from NPKUA All authors confirm independence from the sponsors; the content of the article has not been influenced by the sponsors. The remaining authors declare that the research was conducted in the absence of any commercial or financial relationships that could be construed as a potential conflict of interest.

Copyright © 2017 Bruinenberg, Gordijn, MacDonald, van Spronsen and Van der Zee. This is an open-access article distributed under the terms of the Creative Commons Attribution License (CC BY). The use, distribution or reproduction in other forums is permitted, provided the original author(s) or licensor are credited and that the original publication in this journal is cited, in accordance with accepted academic practice. No use, distribution or reproduction is permitted which does not comply with these terms.