

University of Groningen

On the move

Kos, Claire

IMPORTANT NOTE: You are advised to consult the publisher's version (publisher's PDF) if you wish to cite from it. Please check the document version below.

Document Version

Publisher's PDF, also known as Version of record

Publication date:

2017

[Link to publication in University of Groningen/UMCG research database](#)

Citation for published version (APA):

Kos, C. (2017). On the move: Towards understanding the neural basis of apathy [Groningen]: Rijksuniversiteit Groningen

Copyright

Other than for strictly personal use, it is not permitted to download or to forward/distribute the text or part of it without the consent of the author(s) and/or copyright holder(s), unless the work is under an open content license (like Creative Commons).

Take-down policy

If you believe that this document breaches copyright please contact us providing details, and we will remove access to the work immediately and investigate your claim.

Downloaded from the University of Groningen/UMCG research database (Pure): <http://www.rug.nl/research/portal>. For technical reasons the number of authors shown on this cover page is limited to 10 maximum.

University of Groningen

ON THE MOVE

TOWARDS UNDERSTANDING
THE NEURAL BASIS OF APATHY

Claire Kos

ISBN printed version
ISBN digital version

978-90-367-9716-0
978-90-367-9715-3

© C. Kos, Groningen 2017

Cover design and lay-out
Printed by

Ellen Beck, www.ellenbeck.nl
Netzodruk, www.netzodruk.nl, 100% recycled paper

Paranymphs
Nicky Klaasen
Michelle Servaas



university of
 groningen



umcg





rijksuniversiteit
 groningen

On the move

Towards understanding the neural basis of apathy

Proefschrift

ter verkrijging van de graad van doctor aan de
Rijksuniversiteit Groningen
op gezag van de
rector magnificus prof. dr. E. Sterken
en volgens besluit van het College voor Promoties.

De openbare verdediging zal plaatsvinden op

woensdag 21 juni 2017 om 14.30 uur

door

Claire Kos

geboren op 25 maart 1987
te Naarden

Promotor

Prof. dr. A. Aleman

Copromotores

Dr. H. Knegtering

Dr. M. J. van Tol

Beoordelingscommissie

Prof. dr. S. Dollfus

Prof. dr. E.J.A. Scherder

Prof. dr. G.H.M. Pijnenborg

TABLE OF CONTENT



Chapter 1 • Page 7

GENERAL
INTRODUCTION



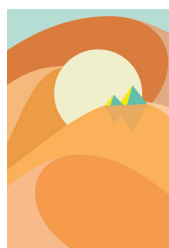
Chapter 2 • Page 19

NEURAL CORRELATES OF
APATHY IN PATIENTS WITH
NEURODEGENERATIVE
DISORDERS, ACQUIRED
BRAIN INJURY, AND
PSYCHIATRIC DISORDERS



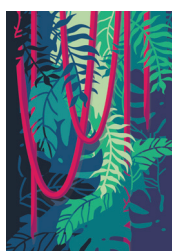
Chapter 3 • Page 51

NEURAL BASIS OF SELF-
INITIATIVE IN RELATION
TO APATHY IN A NON-
CLINICAL POPULATION



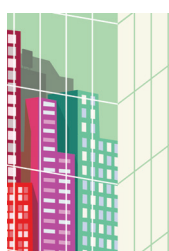
Chapter 4 • Page 73

APATHY IS RELATED TO
REDUCED ACTIVATION IN
COGNITIVE CONTROL REGIONS
DURING SET-SHIFTING



Chapter 5 • Page 91

CAN ACTIGRAPHY YIELD
VALUABLE INFORMATION
ON APATHY IN PATIENTS
WITH SCHIZOPHRENIA?
ASSOCIATIONS WITH
CLINICAL MEASURES
AND NEUROIMAGING OF
ACTION INITIATION



Chapter 6 • Page 115

PREDICTING RESPONSE TO rTMS
TREATMENT IN PATIENTS
WITH SCHIZOPHRENIA FROM
BRAIN MORPHOLOGY



Chapter 7 • Page 131

SUMMARY AND
GENERAL DISCUSSION

LIST OF ABBREVIATIONS	Page 144
REFERENCES	Page 146
NEDERLANDSE SAMENVATTING	Page 161 (DUTCH SUMMARY)
CURRICULUM VITAE	Page 170
PUBLICATION LIST	Page 171
DANKWOORD	Page 172 (ACKNOWLEDGEMENTS)

