

University of Groningen

Carbohydrate Binding Module 74 is a novel starch binding domain associated with large and multi-domain α -amylase enzymes

Valk, Vincent; Lammerts van Bueren, Alicia; van der Kaaij, Rachel M; Dijkhuizen, Lubbert

Published in:
 Febs Journal

DOI:
[10.1111/febs.13745](https://doi.org/10.1111/febs.13745)

IMPORTANT NOTE: You are advised to consult the publisher's version (publisher's PDF) if you wish to cite from it. Please check the document version below.

Document Version
 Publisher's PDF, also known as Version of record

Publication date:
 2016

[Link to publication in University of Groningen/UMCG research database](#)

Citation for published version (APA):

Valk, V., Lammerts van Bueren, A., van der Kaaij, R. M., & Dijkhuizen, L. (2016). Carbohydrate Binding Module 74 is a novel starch binding domain associated with large and multi-domain α -amylase enzymes. *Febs Journal*, 283(12), 2354-2368. [13745]. <https://doi.org/10.1111/febs.13745>

Copyright

Other than for strictly personal use, it is not permitted to download or to forward/distribute the text or part of it without the consent of the author(s) and/or copyright holder(s), unless the work is under an open content license (like Creative Commons).

Take-down policy

If you believe that this document breaches copyright please contact us providing details, and we will remove access to the work immediately and investigate your claim.

Downloaded from the University of Groningen/UMCG research database (Pure): <http://www.rug.nl/research/portal>. For technical reasons the number of authors shown on this cover page is limited to 10 maximum.

Carbohydrate-binding module 74 is a novel starch-binding domain associated with large and multidomain α -amylase enzymes

Vincent Valk, Alicia Lammerts van Bueren, Rachel M. van der Kaaij and Lubbert Dijkhuizen

Microbial Physiology, Groningen Biomolecular Sciences and Biotechnology Institute (GBB), The Netherlands

Keywords

CBM74; granular starch; resistant starch; starch-binding domain; α -amylase

Correspondence

L. Dijkhuizen, Microbial Physiology,
Groningen Biomolecular Sciences and
Biotechnology Institute (GBB), Nijenborgh 7,
9747 AG Groningen, The Netherlands
Fax +31 050 363 2154
Tel. +31 050 363 2153
E-mail: l.dijkhuizen@rug.nl
Website: [http://www.rug.nl/research/
microbial-physiology/](http://www.rug.nl/research/microbial-physiology/)

(Received 3 December 2015, revised 1
March 2016, accepted 20 April 2016)

doi:10.1111/febs.13745

Microbacterium aurum B8.A is a bacterium that originates from a potato starch-processing plant and employs a GH13 α -amylase (MaAmyA) enzyme that forms pores in potato starch granules. MaAmyA is a large and multi-modular protein that contains a novel domain at its C terminus (Domain 2). Deletion of Domain 2 from MaAmyA did not affect its ability to degrade starch granules but resulted in a strong reduction in granular pore size. Here, we separately expressed and purified this Domain 2 in *Escherichia coli* and determined its likely function in starch pore formation. Domain 2 independently binds amylose, amylopectin, and granular starch but does not have any detectable catalytic (hydrolytic or oxidizing) activity on α -glucan substrates. Therefore, we propose that this novel starch-binding domain is a new carbohydrate-binding module (CBM), the first representative of family CBM74 that assists MaAmyA in efficient pore formation in starch granules. Protein sequence-based BLAST searches revealed that CBM74 occurs widespread, but in bacteria only, and is often associated with large and multi-domain α -amylases containing family CBM25 or CBM26 domains. CBM74 may specifically function in binding to granular starches to enhance the capability of α -amylase enzymes to degrade resistant starches (RSs). Interestingly, the majority of family CBM74 representatives are found in α -amylases originating from human gut-associated Bifidobacteria, where they may assist in resistant starch degradation. The CBM74 domain thus may have a strong impact on the efficiency of RS digestion in the mammalian gastrointestinal tract.

Introduction

Starch is an abundantly available carbohydrate, present as storage material in plants [1]. It forms an important part of food and feed for humans and animals, respectively. Depending on the preparation of our food, native plant starch granules may still be present in the form of resistant starch (RS); after heating, mostly solubilized starch remains [2]. In addition, due to their high crystallinity, starch granules are relatively

resistant against enzymatic degradation. Nevertheless, a diversity of bacteria is able to degrade granular starch, employing highly efficient α -amylase enzymes (www.cazy.org) [3]. α -Amylases acting on starch granules generally contain one or more carbohydrate-binding modules (CBMs). Such auxiliary domains may serve to position the enzyme active site into close and prolonged vicinity of starch granules, allowing

Abbreviations

AA, auxiliary activity; CAZy, carbohydrate-active enzymes database; CBM, carbohydrate-binding module; FNIII, fibronectin type III domain; GH, glycoside hydrolase; GIT, gastrointestinal tract; LPMO, lytic polysaccharide mono-oxygenase; RS, resistant starch; SBD, starch-binding domain.

hydrolysis of the insoluble substrate [4–6]. More recently, lytic polysaccharide mono-oxygenases (LPMOs) have been shown to oxidatively degrade insoluble polysaccharides, including cellulose, chitin, and RSs. Starch LPMOs belong to family AA13 and thus far are only found in fungal species [7,8].

In previous work, we have isolated the Gram-positive bacterium *Microbacterium aurum* strain B8.A from the sludge of a potato starch-processing factory on the basis of its ability to use granular starch as carbon and energy source for growth. Extracellular enzymes hydrolyzing granular starch were detected in the growth medium of *M. aurum* B8.A [9]. Recently, we reported the characterization of the raw starch-degrading α -amylase MaAmyA enzyme of *M. aurum* B8.A [10]. This very large α -amylase enzyme (1417 aa) carries multiple CBMs (two CBM25) and fibronectin domains (four FNIII) and initiates granular starch degradation by introducing pores (Fig. 1). At its C terminus, MaAmyA carries a novel protein domain of 300 aa (Domain 2). A truncated MaAmyA variant in which Domain 2 was removed (MaAmyA7) remained fully active in starch granule degradation but introduced pores approximately three times smaller in size than full length MaAmyA (Fig. 1). Further deletions from the C-terminal end including the 2 CBM25 domains resulted in the loss of granular starch degradation ability [10].

Carbohydrate-binding modules are noncatalytic protein modules associated with carbohydrate-active enzymes that bind to carbohydrate substrates and stimulate the catalytic efficiency of the enzyme [11]. CBMs are found in approximately 10% of all known glycoside hydrolase (GH) proteins recorded in the CAZy database [3,12], currently with a total of 71 CBM families. Starch-binding domains (SBDs), constituting a CBM subgroup, are able to bind to starch. Currently, SBDs have been found in CBM families 20,

21, 25, 26, 34, 41, 45, 48, 53, 58, 68, and 69 [13]. SBDs are usually 100–130 aa long [13–15] and mainly present in GH13 α -amylases, GH15 glucoamylases, GH77 amylomaltases, and GH14 β -amylases [3,12]. The best-studied SBDs are found in the CBM20 family. Next to binding, some SBD also play a role in the disruption of the starch structure [6], thereby making the polymer better accessible for hydrolysis by the catalytic domain [16,17]. Some α -amylases contain multiple binding domains, from the same or different CBM families, which generally results in an increase in starch-binding capability of the enzyme [18,19].

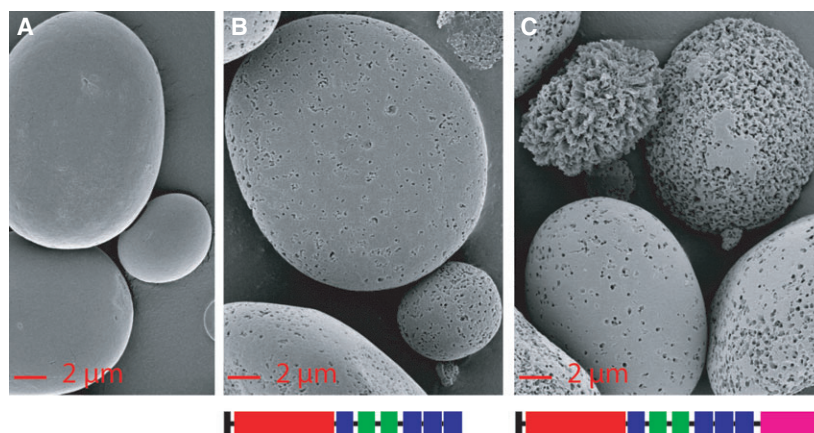
In this study, we expressed and purified Domain 2 from the MaAmyA enzyme in *Escherichia coli* and show that this novel C-terminal domain does not exhibit any detectable hydrolytic or oxidase activity but independently interacts with soluble and granular starches. This novel SBD constitutes a new CBM family that assists large and multi-modular α -amylases in forming pores in starch granules. Based on amino acid sequence similarity searches, we identified that this novel domain is most often associated with large (> 1000 aa) and multi-modular GH13 α -amylases that contain additional starch-binding CBMs (CBM25 and CBM26) and several FNIII domains. Interestingly, Domain 2 most often occurs in Bifidobacteria species that are associated with the human gastrointestinal tract; therefore, it is most likely important in facilitating RS degradation by bacteria in the mammalian gut.

Results

Identification of a novel protein domain in MaAmyA

Recently, we reported the characterization of MaAmyA, a large and multi-domain α -amylase from *M. aurum* B8.A (1417 aa) which is able to form pores in

Fig. 1. The SEM images of wheat starch granules. (A) Incubated for 48 h with negative control sample (empty vector sample), (B) Incubated for 72 h with MaAmyA7, (C) Incubated for 72 h with MaAmyA. The domain organization of the enzyme used for incubation of the granules is shown below the images, using the following colors to indicate the different domains; ■: signal sequence; ■: GH13 catalytic domain; ■: FNIII domain; ■: CBM25 domain; ■: Domain 2. For more details see [10].



starch granules. MaAmyA carries two CBM25 domains and four FNIII domains, plus a novel protein domain at its C terminus that is approximately 300 aa (Domain 2) [10]. Deletion of this Domain 2 did not affect the ability of MaAmyA7 to hydrolyze granular starch, but the average pore sizes in starch granules were reduced three-fold (Fig. 1). This strongly suggests that Domain 2 has a specific functional role, which is investigated here both experimentally and with various bioinformatics tools.

The 300 aa C-terminal tail encoding the predicted Domain 2 of MaAmyA (GenBank [AKG25402.1](#), aa 1116–1415) was successfully cloned and expressed in *E. coli*. Most of the Domain 2 protein accumulated in inclusion bodies. After denaturing and refolding, soluble Domain 2 protein was obtained. SDS/PAGE analysis revealed a protein of 37.5 kDa, matching the predicted size of Domain 2, with > 85% purity (based on SDS/PAGE analysis) (data not shown).

Domain 2 of MaAmyA binds to soluble and insoluble starches

The Domain 2 protein (7 μM) was able to bind to wheat, potato, and waxy corn starch granules present in a 5% m/v suspension. The effects of various carbohydrates on this binding of Domain 2 (7 μM) to the granules were studied. After Domain 2 binding, starch granules were washed and elution was attempted with 5% (m/v) solutions of maltose, glucose, dextrose, isomaltose, or mannan. None of these carbohydrates elicited the release of a detectable amount of Domain 2 from the granules (using SDS/PAGE or western blot analysis with anti-His-tag). In a second elution step, SDS sample buffer efficiently released bound Domain 2 from the starch granules. SDS/PAGE analysis of the samples obtained showed protein bands corresponding to the expected mass of Domain 2 protein at 37.5 kDa. Additionally, western blot analysis with anti-His-tag antibodies showed a single band at 37.5 kDa. An empty vector negative control sample did not show any bands (data not shown).

To examine the possible interactions of Domain 2 with nongranular carbohydrates, a macroarray containing starches from several sources, as well as various other polysaccharides, was prepared. Purified His-tagged Domain 2 protein was allowed to bind to the nitrocellulose-bound starches, and its binding was visualized using anti-His-tag antibodies (Fig. 2). Domain 2 was shown to bind to all tested starches, plus amylose and amylopectin. No relevant signals were detected in the empty vector negative control sample. No binding of Domain 2 to any of the nonstarch polysaccharides was observed. Positive controls included on each macroarray

yielded expected results. Domain 2 of MaAmyA thus represents a novel CBM, an SBD that is able to bind to amylose, amylopectin, and starch granules.

To determine the affinity of Domain 2 for starch binding, 7 μM Domain 2 protein was incubated with increasing percentages of different types of starch granules (Fig. 3). Microgranular cellulose (2.5% m/v) was included as a negative control and did not show any interaction with Domain 2 (data not shown). At low concentrations of starch granules, a clear relation was observed between the amount of Domain 2 bound and the concentration of starch granules. At higher granule concentrations, the amount of bound Domain 2 leveled off, indicating that all Domain 2 that was able to bind (45–75% of total) after the denaturation/renaturation isolation procedure from inclusion bodies had bound to the starch granules. Potato starch showed a different pattern compared to wheat and corn starch. Potato starch saturation was reached at a

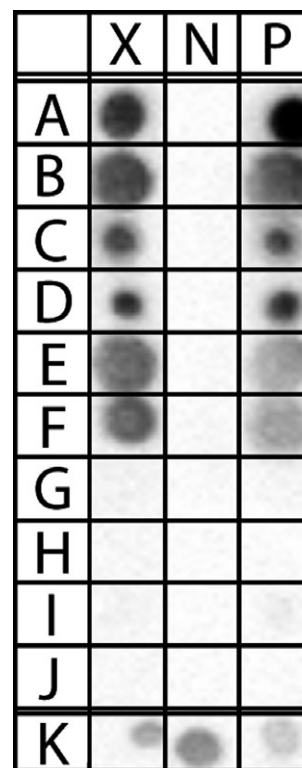


Fig. 2. Polysaccharide-binding macroarray with detection of bound His-tagged CBM74 and CBM41 proteins. Polysaccharide substrates (rows): (A) soluble potato starch; (B) boiled granular potato starch; (C) boiled granular wheat starch; (D) boiled granular waxy corn starch; (E) amylose; (F) amylopectin; (G) pullulan; (H) dextran; (I) glycogen; (J) cyclodextrin; (K) N- and C-terminally His-tagged MaAmyA7 protein (method positive control). Protein samples (columns): X = CBM74; N, negative control (empty vector sample); P, positive control (His-tagged CBM41 sample) [22].

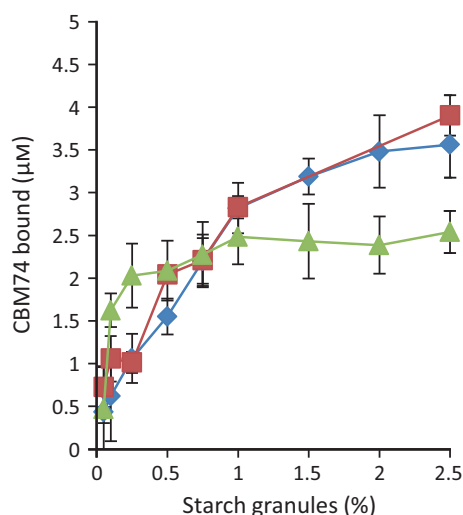


Fig. 3. Binding of CBM74 protein (7 μM) to increasing amounts of different starch granules (0–2.5%, m/v). The unbound CBM74 concentration after incubation with starch granules was determined in triplicate through UV measurements at 280 nm, using the calculated molar extinction coefficient of CBM74. The concentration of bound CBM74 was then calculated by subtracting the value after binding from an included total protein value (without starch granules). CBM74 did not bind to 2.5% m/v microgranular cellulose, while BSA did not show binding to any of the granules tested (data not shown). Values are means \pm SD. \blacklozenge : wheat starch granules; \blacksquare : waxy corn starch granules; \blacktriangle : potato starch granules.

lower concentration of starch granules and the total amount of Domain 2 that bound was significantly lower than with wheat and waxy corn starch (Fig. 3). The Scatchard plots [20] in which the concentration of bound Domain 2 divided by unbound Domain 2 was plotted against the concentration of bound Domain 2 were linear for all three starch types which suggests a single mode of binding for Domain 2 (no cooperativity). When it is assumed that Domain 2 has a single mode of binding, the estimated K_a values are: $0.15 \pm 0.02 \text{ mg}\cdot\text{mL}^{-1}$ for wheat starch granules; $0.14 \pm 0.02 \text{ mg}\cdot\text{mL}^{-1}$ for waxy corn starch granules; and $1.4 \pm 0.5 \text{ mg}\cdot\text{mL}^{-1}$ for potato starch granules. These affinities are in the same range as reported for other SBD such as CBM20 and CBM41 [21,22]. An empty vector negative control series did not show any protein binding with any of the granules. In addition, no unspecific protein binding to the granules was observed with bovine serum albumin (BSA).

Domain 2 does not show hydrolytic or LPMO enzymatic activity

Domain 2 was tested for enzyme catalytic activity on soluble potato starch. As a eukaryotic

starch-degrading lytic polysaccharide mono-oxygenase (LPMO) was recently discovered that needed a cofactor (cysteine) and β -amylase to visualize its activity [7,8], we performed similar co incubations with Domain 2 protein. Even after incubation of 30 μg of Domain 2 for 24 h, no products were detected using TLC and MALDI-TOF MS analysis. Under the conditions tested, we thus were unable to detect any starch acting hydrolytic or LPMO activity for Domain 2.

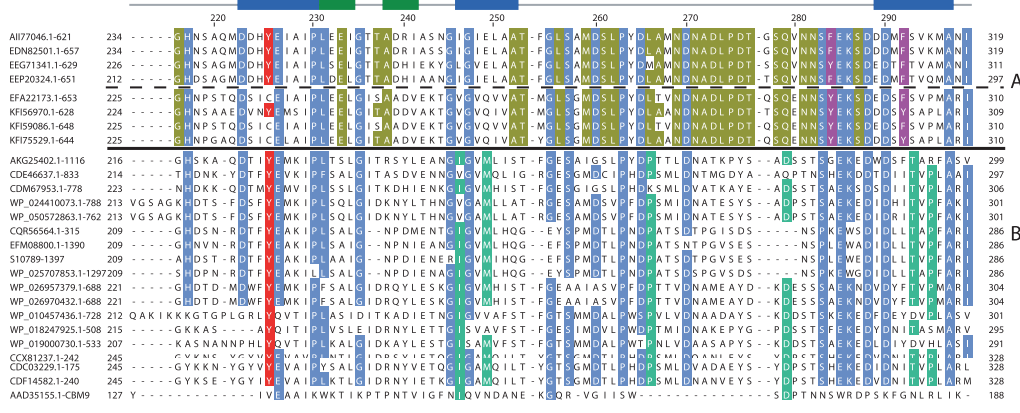
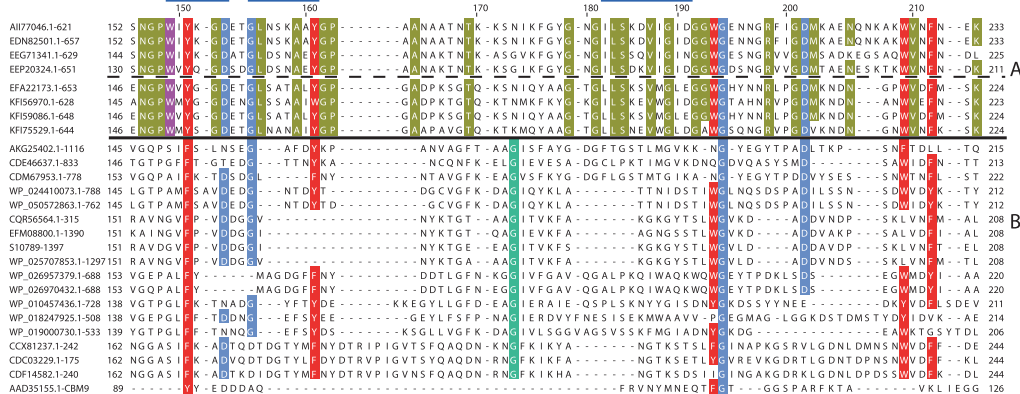
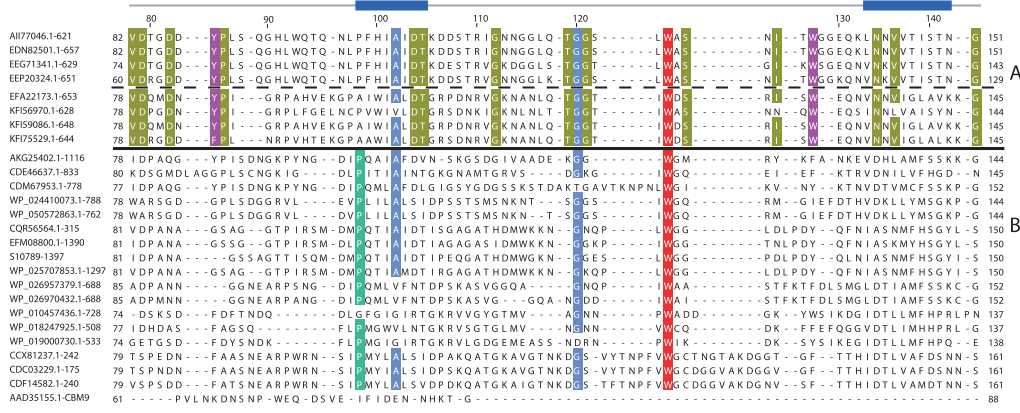
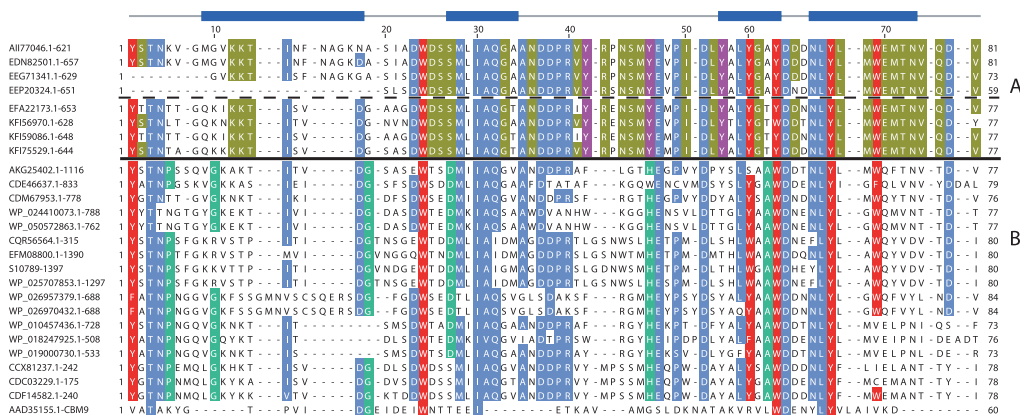
Occurrence of Domain 2 in bacterial genomes

A BLAST search with the Domain 2 amino acid sequence returned 77 hits (November 2015) for a 286–328 aa long fragment ($E > 4 \cdot 10^{-25}$), all from bacterial origin. Three additional significant hits were ignored as these sequences were incomplete; in all cases, the partial domain was located adjacent to a gap in the genome sequence. Domain 2 thus is not unique for MaAmyA and occurs more widespread in bacterial proteins. In view of its starch-binding activity, absence of enzymatic activity, stimulatory effect on pore formation by the MaAmyA enzyme, and more abundant distribution in bacteria, we conclude that Domain 2 proteins constitute a novel CBM family, designated family CBM74.

For secondary and tertiary structure prediction, the amino acid sequence of the CBM74 domain of MaAmyA was submitted to the Phyre2 server [23]. The predicted structure revealed no similarity to any known structures. Only a fragment (aa 14–110) showed resemblance to the structure of CBM9 in Xylanase A of *Thermotoga maritima* MSB8 (PDB: 1I8A) (78% confidence), although the amino acid identity is low (24%) [24]. CBM9 has only been found in association with xylanases [25]. The predicted structure for this part of CBM74 showed five β -sheets with high confidence scores, similar to CBM9. The remaining aa 111–300 fragment did not show significant structural similarity with other known proteins. The predicted structure for this part of CBM74 showed seven additional β -sheets with high confidence scores (Fig. 4).

Alignment of CBM74 of MaAmyA and its 76 homologs

A sequence alignment was made with all CBM74 homologs (Fig. 4). MaAmyA CBM74 has 34–60% identity and 48–73% similarity with its 76 homologs. Several conserved aromatic residues were identified, which may be of special interest as these are often involved in carbohydrate interaction and binding [26–28]. The overall similarity is lower in the middle



part of the CBM74 domain (aa 113–201), although some aromatic residues are conserved here as well. Based on the alignment, two clusters were defined: cluster A with 50 sequences (45–67% identity, 61–78% similarity) and cluster B (35–60% identity, 48–73% similarity) with 27 sequences, including CBM74 from MaAmyA (see also the phylogenetic tree in Fig. 5). The homologs in cluster A contain an additional 86 conserved residues, including eight aromatic residues, compared to the homologs in cluster B.

CBM74 is a single domain protein

The results of the Phyre2 prediction showed structural similarity between aa 14–110 of CBM74 and CBM9. When CBM9 of Xylanase A from *T. maritima* MSB8 (GenBank AAD35155.1) was included in the alignment, the first tryptophan (aa 72) of CBM9, which is known to be involved in ligand binding [24], aligned with the conserved tryptophan at aa 70 in cluster B (Fig. 4). Within cluster A, this tryptophan is mostly substituted by a tyrosine. The second tryptophan (aa 176) involved in ligand binding in CBM9 is not conserved in CBM74. CBM74 is much larger than CBM9 and has multiple other conserved aromatic residues that may be involved in further interactions with starch.

The similarity between CBM9 and only the first part of CBM74 may indicate that CBM74 is in fact a combination of two domains. To investigate whether CBM74 represents one or two domains, the aa sequence of the CBM74 domain of MaAmyA was submitted to three domain prediction servers (SBASE, DOBO, and DOMpro) [29–32], which all predicted that it represents a single domain. Additionally, in view of the observation that all 77 CBM74 homologous domains in the databases have a similar length (286–328 aa), we conclude that CBM74 represents a single domain protein.

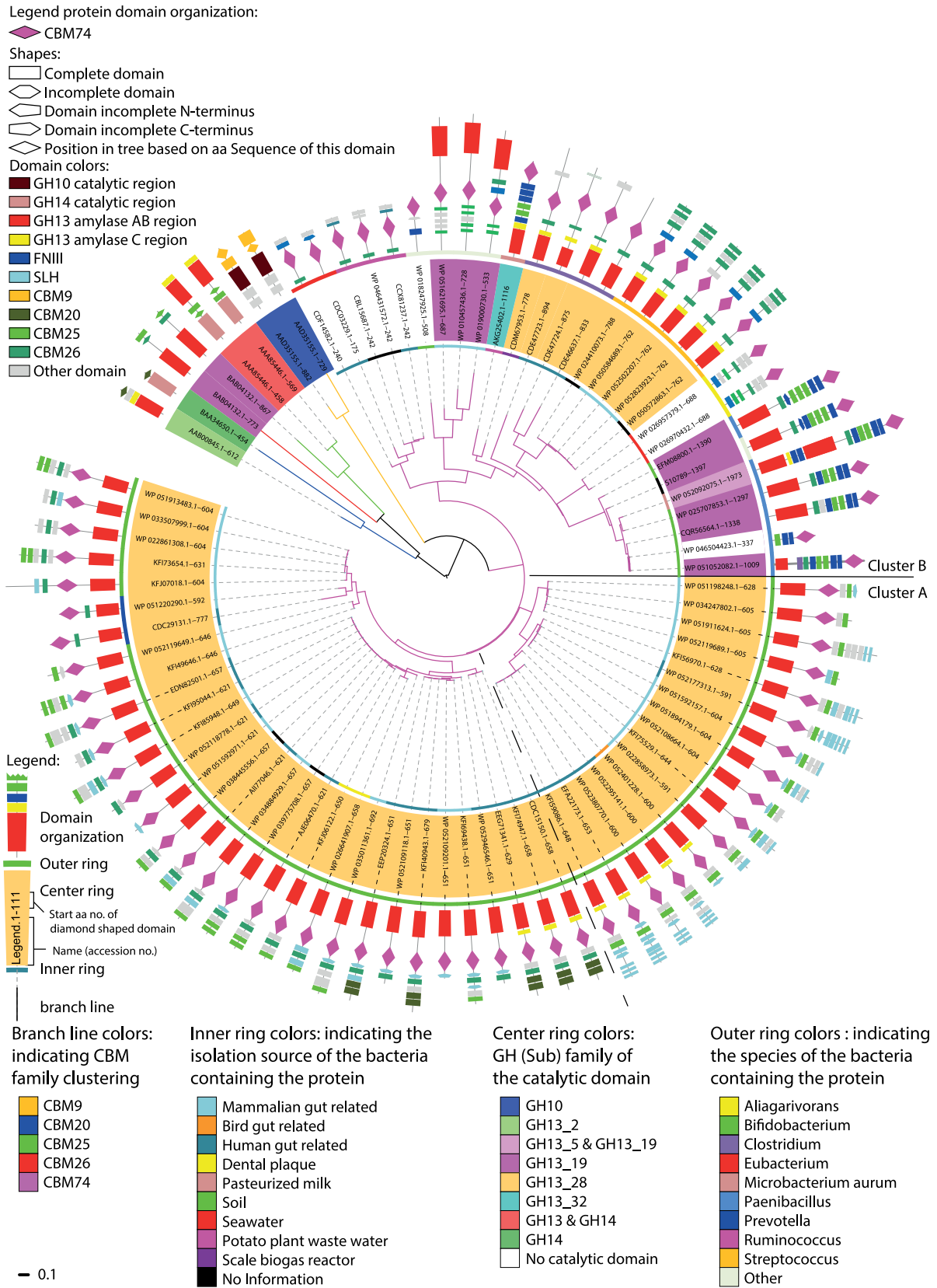
Phylogenetic analysis of all family CBM74 members

A phylogenetic tree based on the alignment of all family CBM74 homologs and a selection of known

CBM sequences from CAZy is shown in Fig. 5, along with the domain organization of the proteins they belong to. The phylogenetic tree shows that all CBM74 homologs cluster together as a new group, separate from previously described CBMs. The CBM74 homologs are most closely related to CBM9, also reflecting the structural homology described above. Family CBM74 shows clustering that in general matches with the host species that harbors the CBM74-containing protein (Fig. 5). Clusters A and B, as identified in the sequence alignment (Fig. 4), are clearly visible in the tree as well. Cluster A is the largest CBM74 cluster, containing all the CBM74 members that are part of proteins from mainly *Bifidobacterium* species, while cluster B consists of all the others (Figs 4 and 5). CQR56564 is most likely linked to the α -amylase that is preceding it in the genome (CQR56565.1). Therefore, CQR56564.1 was linked to this α -amylase to reveal the full organization of the protein. For comparison, both are shown in the phylogenetic tree (Fig. 5).

Of the 77 unique (and restored) CBM74 proteins, 69 CBM74 domains are part of glycoside hydrolase family 13 (GH13) α -amylases. They all have the ABC-domains typical for α -amylases [33], even though this is not always shown in the domain organization (Fig. 5). This is due to the fact that a number of these proteins possess C-domains with a primary sequence that has a low identity with C-domains currently in databases. However, structural analysis using Phyre2 [23] revealed that despite this low sequence identity, all proteins shown have a predicted fold that is similar to that of GH13 C-domains, including all β -sheet fold and typical Greek key motif [33]. Of all 77 CBM74-containing proteins, only MaAmyA of *M. aurum* B8.A has been characterized experimentally, namely as a granular starch-degrading α -amylase [10]. Most of the 69 CBM74-containing α -amylases have catalytic domains that belong to the GH13_28 subfamily (59 sequences) or GH13_19 (9 sequences). Only MaAmyA from *M. aurum* belongs to the GH13_32 sub family [10]. The CBM74

Fig. 4. Sequence alignment of all 77 known CBM74 homologs (November 2015), including MaAmyA CBM74. CBM9 (aa 729–843) of Xylanase A of *Thermotoga maritima* MSB8 was included as reference [24]. For visibility, only a limited number of the CBM74 sequences (8 of 50 of cluster A and 17 of 27 of cluster B) are shown representing the maximal amount of variation visible between the sequences. The aa numbers are based on MaAmyA CBM74. The solid black line indicates the separation between clusters A and B. The dashed black line indicates the two subgroups in cluster A. The gray line shows the secondary structure of CBM74 from MaAmyA (aa 1116–1416 of AKG25402.1) as predicted by Phyre2, with blue boxes representing β -sheets and green boxes representing α -helices. Color code used for amino acids: Red: aromatic residues conserved in all sequences; Pink: aromatic residues only conserved in cluster A; Blue: other conserved residues in all sequences; Yellow: only conserved in cluster A; Green: only conserved in cluster B. GenBank accession numbers are used as names followed by the aa number were the similarity with MaAmyA CBM74 protein starts.



domain is generally present in the middle (64 sequences) of the protein, but never directly adjacent to the catalytic domain (Fig. 5). It is also found at the C terminus of these proteins (13 sequences), but never at the N terminus. MaAmyA has a C-terminal CBM74 which is preceded by three FNIII domains [10]. FNIII domains are only found in eight other CBM74-containing proteins; these proteins mostly contain a GH13_19 catalytic domain, one or more CBM25 domains, and a C-terminal CBM74 (Fig. 5). Of the CBM74 proteins, eight are not linked to a catalytic domain. In most cases, however, α -amylase catalytic domains are encoded by immediately adjacent genes in their respective genomes.

CBM25 and the structurally related CBM26 domain [34] are commonly present in the CBM74-containing α -amylases (Fig. 5). At least one CBM25 (in 25 sequences) or CBM26 (in 43 sequences) domain is present about 150 aa after or about 200 aa (300 aa only in case of MaAmyA) before CBM74 in these α -amylases. In five of the eight CBM74-containing proteins without a catalytic domain, CBM26 is present about 200 aa before the CBM74 domain. The general domain organization of CBM74-containing proteins and the location of this domain in these proteins appear to be related to the identity of the bacterial host species (Fig. 5) (see next paragraph).

Bacterial species harboring proteins with CBM74 homologs

Our data show that 69 of the 77 CBM74 homologs are present in large and multi-domain putative α -amylases that are mainly encoded by bacteria isolated from the mammalian gut or gut-related environments. The 50 proteins with CBM74 homologs in cluster A mainly originate from *Bifidobacterium* species (48 proteins), while two originate from *Prevotella* species. Most of these species were isolated from mammalian gastrointestinal tract (GIT)-related environments (45 species), two were isolated from hamster dental plaque, and one

from chicken GIT, while for two the source of isolation is unknown (Fig. 5). All CBM74-containing proteins in this cluster are large and multi-domain α -amylases that belong to the GH13_28 subfamily.

CBM74-containing proteins from *Bifidobacterium* can be split into two groups; with and without CBM26. The general domain organization for the group with CBM26 is: GH13_28 catalytic domain, ~ 150 aa gap, CBM74, Big_2, CBM26, Big_2, additional binding domains (CBM13, 20, or 25). Big_2 is a bacterial domain with an Ig-like fold, commonly found in bacterial and phage surface proteins [35]. The Big_2 domain is widely distributed in carbohydrate-acting enzymes. Its function is not clear, but removal of the Big_2 domain from a termite gut bacterium GH10 xylanase greatly reduced the activity of this enzyme [36]. In a few cases, CBM26 is replaced by CBM25. The general domain organization for the group without CBM26 is: GH13_28 catalytic domain, ~ 150 aa gap, CBM74, Big_2, CBM25, 1–3 Big_2, 1–3 SLH (surface layer homology) domains. Some shorter members lack the SLH domains. The C-terminal SLH domains are associated with noncovalent anchoring to the cell surface S-layer via a conserved mechanism involving wall polysaccharide pyruvylation [37,38]. Interestingly, this group without CBM26 forms a separate subgroup within CBM74 cluster A (Fig. 5). The two proteins from *Prevotella* species are shorter and consist of a GH13_28 catalytic domain, a CBM26 domain, and a C-terminal CBM74 domain.

The 27 proteins with CBM74 homologs in cluster B have more diverse origins (Fig. 5): five *Paenibacillus* strains, all isolated from soil (five strains); five *Streptococcus* strains, mainly isolated from mammalian gut-related environments (three strains); four *Clostridium* strains, mainly isolated from mammalian gut-related environments (three strains); two *Eubacterium* strains from mammalian gut-related environments; two *Aliagarivorans* strains isolated from seawater; one *M. aurum* strain (studied in this paper) from a potato waste water treatment plant [9]; three

Fig. 5. Phylogenetic tree of all 77 known CBM74 homologs (November 2015), including MaAmyA CBM74, together with a selection of sequences from CBM9, CBM20, CBM25, and CBM26 for which the 3D structures are known (based on <http://www.CAZy.org>). The part of the full protein sequence that was used to construct the tree (the CBM74 domain) is shown as a diamond. The domain organization of the full proteins shown is based on combined CDD, DBcan, and Blast (for CBM74) data. The CBM74 domain is indicated in pink. CDD does not recognize C-domains in all α -amylases. However, manual assessment of the amino acid sequence downstream of the indicated GH13 AB-domain using Phyre2 revealed that a C-domain is present in all proteins (see text). The outer ring between the accession numbers and the protein domain organization indicates the bacterial host species, while the inner ring between the tree and the accession numbers shows the source of isolation of the host organism. Branch line colors correspond to the different CBM families. The background color of the accession numbers indicates the GH (sub)family of the catalytic α -amylase domain. The solid line shows the separation between CBM74 cluster A and B. The dashed line shows the separation between the two subgroups of cluster A. The scale bar indicates 0.1 amino acid replacement per site.

Ruminococcus strains of which one from mammalian gut-related environments; one *Ruminobacter* strain from a mammalian gut-related environment; one *Succinivibrionaceae* strain from mammalian gut-related environments; one *Succinimonas* strain from mammalian gut-related environment; and one *Orenia marismortui* strain isolated from soil. The five CBM74-containing proteins from *Paenibacillus* strains stand out as these are the only ones next to MaAmyA that contain FNIII domains, CBM25 domains, and a C-terminal CBM74 (Fig. 5). Despite this similar domain organization, the individual CBM25 and FNIII domains of MaAmyA do not show high similarity with those from the *Paenibacillus* enzymes or with the CBM25 domains from other CBM74-containing enzymes in phylogenetic trees based on either domain (data not shown).

Within the group of CBM74-containing proteins, specific GH13 α -amylase subfamilies can be linked to different bacterial species (Fig. 5). For example, CBM74-containing α -amylases that belong to GH13_28 are found in *Clostridium* (4), *Bifidobacterium* (48), *Streptococcus* (5) strains, and *Prevotella* (2), while those belonging to GH13_19 are found in *Paenibacillus* (5), *Eubacterium* (1), *Ruminobacter* (1), *Succinivibrionaceae* (1), and *Succinimonas* (1) strains. MaAmyA of *M. aurum* is the only GH13_32 protein [10].

Discussion

The large and multi-domain MaAmyA α -amylase from *M. aurum* B8.A (1417 aa) is able to degrade granular starch (Fig. 1) and contains a novel domain at its C terminus. This 300 aa Domain 2 is able to bind to raw starch granules (Fig. 3) as well as to amylose and amylopectin (Fig. 2). The length of Domain 2 is comparable to the length of the recently described starch-degrading LPMO [7,8]. As one LPMO family, now defined as Auxiliary Activity 10 (AA10), was initially characterized as a CBM (CBM33) [39], we screened Domain 2 for mono-oxygenase activity but were unable to find any. Interestingly, currently (February 2016) identified LPMOs, defined as AA families 9, 10, 11, and 13 in the CAZy.org database, do not contain any additional catalytic domains and are part of relatively small proteins (average 350 aa) that usually contain no more than two additional domains [3]. This is unlike Domain 2 which is usually part of large, multi-domain proteins containing a GH13 catalytic domain. This sets Domain 2 aside from currently known LPMOs. As Domain 2 is usually found combined with a GH13 catalytic domain, a noncatalytic function seems more likely for Domain 2. A majority of the

Domain 2-containing proteins have a predicted signal sequence and are therefore likely secreted by the host. Domain 2 could also act as a cell wall-anchoring domain. However, such domains are usually located at the protein termini [37,38,40,41], while Domain 2 is often found in the middle. It therefore seems unlikely that Domain 2 functions as a cell wall-anchoring domain.

In previous work [10], the full-length MaAmyA enzyme and a mutant with deleted Domain 2 (MaAmyA7) showed similar starch-degrading activity with both soluble and granular starch. As a major difference, the pores formed in starch granules by MaAmyA were about three times larger than those formed by MaAmyA7 [10]. These results suggest that Domain 2 plays a specific role in binding to starch granules (Figs 2 and 3), thereby assisting in their degradation (Fig. 1).

No specific enzyme activity was found associated with Domain 2 itself. This MaAmyA Domain 2 thus appears to constitute a novel SBD/CBM, and was designated CBM74. It displays highest affinity for binding to potato starch granules (Fig. 3). Although potato starch granules are larger than wheat and maize starch granules [42], this does not automatically result in a higher affinity. In a binding study of pig pancreatic amylase (PPA) binding to different starch granule types, it was shown that PPA had a lower affinity for potato starch than maize and wheat starch. In addition, when one type of starch granules was separated into two pools based on the granule sizes, PPA showed higher affinity for the smaller granules [42]. In a study with CBM20, it was found that the affinities for potato and maize starch granules were similar [43]. The differences in affinity could also be related to the crystallinity type of the starch granules, which is mainly dependent on the plant species that produced the granules [44]. As potato starch granules have a B-type crystallinity, while wheat and maize starch granules have an A-type crystallinity [44], this corresponds with the differences in affinities we found. This could indicate that CBM74 has a higher affinity for B-type crystallinity granules. However, more research is needed to fully understand the mechanism of binding of CBM74.

CBM74 is 300 aa long and therefore exceptionally large compared to other known CBMs which are generally between 50 and 200 aa long [3,45]. It is noteworthy that 90% of all identified protein domains are shorter than 200 aa [46,47]. Several domain prediction servers indicated CBM74 to be a single domain. All 77 CBM74 homologs identified in the present study have a similar length and showed similarity over the full

~ 300 aa, thus also indicating that CBM74 is a single and complete domain without internal duplications. Therefore, we conclude that CBM74 is indeed a single domain and an extraordinarily large CBM.

CBM74 clearly occurs more widespread and is commonly part of extremely large (> 1300 aa), multi-domain GH13 amylases that also contain CBM25 or CBM26 domains next to a single catalytic domain. Less than 2% of all GH13 members currently listed in the CAZy database are 1300 aa or longer [3]. On average, GH13 α -amylases are about 650 aa long with usually only up to two additional domains [3]. The α -amylase proteins with a CBM74 domain appear to be specialized in the degradation of starches that are difficult to hydrolyze enzymatically.

Most of the currently known CBM74-containing α -amylases (at least 80%) originate from bacteria isolated from the GIT (Fig. 5). This number could be slightly biased due to the relatively high number of GIT bacterial genomes that have been sequenced; about 28% of all fully sequenced bacterial genomes are part of the Human Microbiome Project [48]. Nevertheless, the high percentage of CBM74 domains found in enzymes from GIT-related bacteria may indicate that CBM74 fulfills a specific role in starch digestion in the intestinal tract. In the human GIT, most of the (soluble) starch from food is degraded by α -amylases and glucoamylases of the host organism. However, RS is harder to degrade due to its crystallinity or due to complex formation, either occurring naturally or after food processing [2,49]. Under normal conditions, RS is fermented completely by microorganisms in the colon of the host [2,49].

Resistant starch can be divided into five different types (RS1-5). With the exception of RS5, the higher the RS number, the lower the degradation rate by human α -amylases in the GIT. RS3, also known as retrograded starch, is of special interest as it is formed without any additions and resists regular food processing, or is even formed during processing [2,50]. It is well known that SBDs greatly enhance the ability of α -amylases to degrade granular starches [51]. As most CBM74 homologs are found in large α -amylases with additional SBDs, it appears likely that CBM74 plays a role in resistant (granular) starch binding.

The ability of *Bifidobacteria* to degrade RS has been demonstrated in literature. Animal studies in which rats colonized with human microflora were fed a high RS diet showed that the number of *Bifidobacteria* and *Lactobacilli* in the microflora increased 10- to 100-fold when compared to a high sucrose diet, demonstrating a link between RS fermentation and representation of these two genera [52]. As shown in Fig. 5, CBM74 is

present in α -amylases from 22 different *Bifidobacterium* strains, constituting over 45% of all sequenced *Bifidobacterium* strains listed in GenBank (November 2015). Another study showed that *Ruminococcus bromii* L2-63 and *Bifidobacterium adolescentis* L2-32 individually are able to degrade especially RS3 up to about 50%, and even up to > 90% when cocultured. In an obese test subject with a low percentage of RS fermentation, both *R. bromii* and *B. adolescentis* were absent from the microflora [53]. Addition of *B. adolescentis* L2-32 or *R. bromii* L2-63 improved RS3 fermentation with ~ 20% and ~ 45%, respectively, the latter restoring fermentation to levels similar to those of healthy volunteers. Proteins containing CBM74 homologs are present in the genomes of both these strains (WP_015523730.1 and EDN82501.1 in Fig. 5), but absent in the genomes of two other strains used in the same study which were unable to improve RS3 degradation significantly (*Eubacterium rectale* A1-86 and *Bacteroides thetaiotaomicron* 5482) [53].

The relative abundance of CBM74 in mammalian gut *Bifidobacterium* α -amylases is taken to suggest that CBM74 has a major role in degradation of RS in the mammalian GIT. The presence and proper functioning of this CBM74 domain thus may have strong effects on the efficiency of mammalian food digestion.

Thus, CBM74 may assist MaAmyA in the degradation of RS through binding to it. The binding of CBM74 to starch granules has been demonstrated experimentally (Fig. 3). In addition to binding, CBM74 may also be involved in preparation of the substrate (granule) surface for degradation, in a similar way as it is seen for CBMs in cellulase enzymes, where CBMs assist in unwinding the carbohydrate chains, making them more accessible for the action of the catalytic domain [4]. As shown, the presence of CBM74 results in formation of larger pores in starch granules (Fig. 1).

Our bioinformatics analysis revealed 77 CBM74 homologs in databases and confirmed that CBM74 constitutes a single domain. The CBM74 homologs clustered together in a phylogenetic analysis (Fig. 5) and showed low identity to other known CBMs. We therefore conclude that CBM74 represents a novel starch-binding CBM family.

Materials and methods

Bioinformatic tools

All BLAST searches were performed with NCBI BLASTP using standard settings. Conserved domains were detected using both the NCBI conserved domain finder [35] with

forced live search, without low-complexity filter, using the conserved domain database (CDD) and dbCAN [54] with standard settings. Alignments were made with Mega6.0 [55] using its built-in muscle alignment with standard settings and manually tuned. Alignments were visualized with JALVIEW 2.8.1 [56]. Phylogenetic trees were made with Mega6.0 using maximum likelihood method with gaps/missing data treatment set on partial deletion instead of full deletion. Trees were visualized with Interactive Tree Of Life v2 [57]. Information about the GH13 subfamilies was obtained from the CAZy database [3]. The domain organization shown in the tree is based on the combined dbCAN and CDD data. Signal sequences were predicted with SignalP 4.1 using 'Gram-positive bacteria' organism group and 'Sensitive' D-cutoff values [58]. Domain prediction servers SBASE, DOBO, and DOMpro [30–32] were used with standard settings. Secondary and tertiary structure prediction was done using the Phyre2 server with standard settings [23].

Cloning and expression

CBM74 (aa 1116–1415) was cloned from the *M. aurum* B8.A *amyA* gene construct [10] into pET15b using the LIC system [59,60] and the forward and reverse primers CAGG GACCCGGTGCCTCTACTCGACCAACCCGTCGTCG CAG and CGAGGAGAAGCCCGGTTACAAGAAGCC TACGCTCGGAAGCGAGC. A recombinant *E. coli* strain with an empty pET15b vector was used to produce a negative control sample.

Production and purification of CBM74 protein

CBM74 –pET15b was transformed into *E. coli* BL21* DE3 cells (Novagen, Madison, WI, USA). One liter of LB broth supplemented with ampicillin ($50 \mu\text{g}\cdot\text{mL}^{-1}$) was inoculated with a 5 mL overnight starter culture and incubated with shaking at 37 °C until an OD₆₀₀ of 1.0 was reached. Protein production was induced by the addition of 1 mM IPTG and the culture was incubated for a further 16 h at 20 °C. *E. coli* cells were harvested by centrifugation (4250 g for 20 min) and the pellet was resuspended in 25 mL of 20 mM Tris/HCl pH 8.0, 500 mM NaCl (Buffer A) containing $0.2 \text{ mg}\cdot\text{mL}^{-1}$ lysozyme, and $0.2 \text{ mg}\cdot\text{mL}^{-1}$ DNaseI and lysed by sonication. The lysed cells were subjected to centrifugation (15 000 g for 45 min). The supernatant did not contain any soluble protein, and CBM74 protein was only present in inclusion bodies in the cell pellet. The cell pellet was washed twice with Buffer A containing 0.1% Triton X-100 to remove membrane debris, then washed twice with Buffer A. The inclusion bodies were then denatured by resuspension in 200 mL Buffer A containing 8 M urea, and stirred overnight at room temperature. The following day, the solution containing denatured CBM74 protein was spun down (4250 g for 20 min) and the denatured protein was dialyzed in a stepwise manner into 2 L of Buffer A

supplemented with 5 mM CaCl₂ and 5 mM MgCl₂ and decreasing concentrations of urea (4 M, 2 M, 0 M). Each dialysis step was performed over 24 h, and the final 0 M urea dialysis step was performed twice over 48 h using snakeskin dialysis membrane with a 10 kDa MWCO pore size (Thermo Scientific). The resulting dialyzed supernatant contained soluble, refolded CBM74 protein which was > 95% pure as assessed by SDS/PAGE (not shown), and yielded > 300 mg soluble CBM74 protein per liter of *E. coli* culture. CBM74 protein was further purified by immobilized metal affinity chromatography (IMAC), taking advantage of the N-terminal His₆ tag present. The IMAC purification was carried out using established protocols [10]. Purified proteins were stored at 4 °C in 50 mM Tris/HCl buffer pH 6.8 containing 10 mM CaCl₂.

Granular starch binding

All binding studies were performed in standard binding buffer (50 mM Tris/HCl buffer pH 6.8 containing 10 mM CaCl₂). Granular wheat (Sigma-Aldrich, Zwijndrecht, the Netherlands; catalog no. S5127), waxy corn (Sigma-Aldrich, catalog number S9679), potato starch (AVEBE), and cellulose (Sigma-Aldrich catalog number C6413) were washed with standard binding buffer, and 0; 0.05; 0.1; 0.25; 0.5; 0.75; 1.0; 1.5; 2.0; 2.5; 5.0; 7.5% (m/v) suspensions of granules were prepared in the same buffer. Of each suspension, 100 μL was transferred to a clean 2 mL reaction tube and the buffer was removed through centrifugation (5000 g for 20 s). Subsequently, 100 μL His-tag purified CBM74 ($0.3 \text{ mg}\cdot\text{mL}^{-1}$), 100 μL of empty vector negative control sample, or 100 μL of BSA ($0.3 \text{ mg}\cdot\text{mL}^{-1}$) was added to each pellet (in triplicate). For cellulose and BSA, only suspensions of 2.5% (m/v) were included. The mixtures were incubated for 2 h at 4 °C on a roller bench. Unbound protein was removed by centrifugation (10 000 g for 15 sec). Pellets of the 5% (m/v) samples were kept for additional experiments. The supernatant was transferred to a microtiter plate suitable for UV measurements (Falcon), and assayed at 280 nm in a microtiter plate reader (Spectra-max Plus; Molecular Devices, Sunnyvale, CA, USA) with a path length of 0.25 cm.

Pellets of the 5% (m/v) wheat and potato starch granule suspensions were washed three times with 100 μL standard binding buffer for 30 min at 4 °C, followed by centrifugation; the supernatant of the third wash was collected. Each 100 μL suspension was then split into two 50 μL suspensions, resulting in six 50 μL suspensions for each granule type. Two elution steps for bound CBM74 were performed. In the first step, 50 μL standard binding buffer containing 5% (m/v) of the carbohydrate (buffer, maltose, glucose, dextrose, iso-maltose or mannose) to be tested for elution was added, mixed for 30 min on a roller bench at room temperature, and collected by centrifugation. In the second elution step, 50 μL 5x concentrated SDS sample buffer was

added, mixed for 5 min and granules collected through centrifugation. Of the third washing and first elution steps, supernatant fractions of 20 μL were mixed with 5 μL 5x SDS sample buffer and loaded onto SDS/PAGE. Of the second elution, 20 μL supernatant was mixed with 5 μL buffer and loaded onto SDS/PAGE; on each gel a protein marker (PageRuler Plus Prestained Protein Ladder, Fermentas, Vilnius, Lithuania) and a negative control (empty vector) sample were also included. Afterwards the gels were stained with Coomassie brilliant blue R (Bio-Rad, Laboratoires B.V., Veenendaal, the Netherlands) to visualize the protein bands, or used for semidry western blot (Bio-Rad). Additional controls were performed to exclude any effects of proteins naturally attached to starch granules (washed granules eluted with SDS sample buffer).

The amount of CBM74 bound to the starch granules was determined with the calculated molar extinction coefficient (using the ExPASy ProtParam tool [61]) of CBM74 ($49850 \text{ M}^{-1}\cdot\text{cm}^{-1}$) and the following formula:

$$\text{Bound CBM} = \frac{A_{280 \text{ total}} - A_{280 \text{ unbound}}}{\epsilon \cdot l}$$

where, Bound CBM = concentration of CBM74 that bound to the granules (M); $A_{280 \text{ total}}$ = absorbance of total CBM74 protein available for binding at zero time; $A_{280 \text{ unbound}}$ = absorbance of unbound CBM74 protein after 2 h incubation with granules; ϵ = calculated molar extinction coefficient of CBM74 ($= 49850 \text{ M}^{-1}\cdot\text{cm}^{-1}$); l = spectrophotometer path length ($= 0.25 \text{ cm}$).

Using a Scatchard plot [20,62], the concentration of bound CBM74 divided by the concentration of unbound CBM74 was plotted against the concentration of bound CBM74. All concentrations were normalized to an equal amount of starch granules.

The dissociation constants (K_d) were determined through nonlinear regression analysis with Microsoft Excel 2010 as described by Kemmer *et al.* [63], using a one-site binding model [42]:

$$\text{Bound CBM} = \frac{B_{\text{max}} \cdot [S]}{K_d + [S]}$$

where, Bound CBM = Concentration of CBM74 that bound to the granules (M); B_{max} = the maximum binding capacity; $[S]$ = starch granule concentration ($\text{mg}\cdot\text{mL}^{-1}$); K_d = dissociation constant ($\text{mg}\cdot\text{mL}^{-1}$).

The K_d values are equal to K_d^{-1} .

Western blot

Samples were transferred onto a nitrocellulose membrane (GE Healthcare Europe GmbH, Eindhoven, the Netherlands) through semidry blotting (Trans-Blot Semi-Dry SD cell, Biorad) for 15 min at 20 V, using transfer buffer

(50 mM Tris/HCl, 40 mM Glycine, 1.75 mM SDS, pH 9). After blotting, membranes were blocked for 1 h at room temperature with blocking buffer (140 mM NaCl, 10 mM phosphate buffer, and 3 mM KCl, pH 7.4) (Calbiochem, PBS tablets) (Sigma-Aldrich) containing 1% m/v BSA (Sigma-Aldrich) and 0.05% Tween 20 (Sigma-Aldrich). The membranes were then incubated for 1 h with blocking buffer containing 0.02% v/v one-step anti-His antibody (Qiagen, Venlo, the Netherlands), and washed (with block buffer) three times for 5 min. After washing, membranes were activated with fresh mixed ECL reagent (GE Healthcare Europe GmbH) and exposed in a Chemidoc (Bio-Rad) for up to 30 min.

Polysaccharide macroarray binding analysis

The macroarray method used is based on the procedure described elsewhere [22]. All carbohydrates were obtained from Sigma-Aldrich unless indicated otherwise. Soluble potato starch, granular potato starch (AVEBE, Foxhol, the Netherlands), granular wheat starch, granular waxy corn starch, amylopectin, maltodextrin, and pullulan were dissolved in Milli-Q at a concentration of $10 \text{ mg}\cdot\text{mL}^{-1}$ (m/v). Granular starches were (partially) dissolved by heating the suspension in a heating block set at $100 \text{ }^\circ\text{C}$ for 10 min. Amylose was dissolved by adding 0.1 M NaOH and subsequent addition of an equal volume of 0.1 M HCl. Macroarrays were prepared by spotting 1 μL of each dissolved carbohydrate onto a nitrocellulose (GE Healthcare Europe GmbH) membrane. A His-tagged protein (MaAmyA7 lacking domain CBM74 and containing both an N- and C-terminal His-tag [10]) was used as a positive method control for proper His-tag detection on each membrane. After spotting, membranes were dried to the air for at least 2 h. After blocking (see western blot), the membranes were probed with 300 μg His-tag purified CBM74, 100 μg of His-tag purified CBM41 (a well-characterized starch-binding domain) as a positive control [22] or an equal volume of the negative control (empty vector) sample in 10 mL blocking buffer and incubated at $4 \text{ }^\circ\text{C}$ for 1 h. Subsequently, membranes were treated as regular western blots after blocking.

CBM74 enzyme catalytic activity testing

The potential catalytic activity of CBM74 on starch was tested by incubation of 30 μg CBM74 in 1 mL standard binding buffer (50 mM Tris/HCl buffer pH 6.8 containing 10 mM CaCl_2) containing $10 \text{ mg}\cdot\text{mL}^{-1}$ soluble potato starch. To test for LPMO activity [6], the following was added: 10 mM CuCl_2 ; 5 mM L-cysteine (adjusted to pH 6.8); 5 μL (30 unit) barley β -amylase (Megazyme, Ireland, 1000-fold diluted in standard binding buffer) as well as all possible combinations of these additions. Reactions were incubated for 24 h at $37 \text{ }^\circ\text{C}$ in a heating block.

Products formed were analyzed on TLC as described previously [64] and MALDI-TOF MS (Shimadzu AXIMA Performance) using 2,5-dihydroxybenzoic acid (DHB) as matrix. All incubations and analyses were performed in duplicate.

Acknowledgements

This study was partly funded by the Top Institute of Food & Nutrition (project B1003) and by the University of Groningen. ALvB is funded by an NWO Veni Grant.

Author contributions

VV, ALvB, RMvdK, and LD planned experiments. VV and ALvB performed experiments. VV, ALvB, RMvdK, and LD analyzed data. VV, ALvB, RMvdK, and LD wrote the paper.

References

- Zobel HF (1988) Molecules to granules: a comprehensive starch review. *Starch-Stärke* **40**, 44–50.
- Raigond P, Ezekiel R & Raigond B (2015) Resistant starch in food: a review. *J Sci Food Agric* **95**, 1968–1978.
- Lombard V, Golaconda Ramulu H, Drula E, Coutinho PM & Henrissat B (2013) The carbohydrate-active enzymes database (CAZy) in 2013. *Nucleic Acids Res* **42**, D490–D495.
- Guillén D, Sánchez S & Rodríguez-Sanoja R (2010) Carbohydrate-binding domains: multiplicity of biological roles. *Appl Microbiol Biotechnol* **85**, 1241–1249.
- Rodríguez-Sanoja R, Ruiz B, Guyot JP & Sanchez S (2005) Starch-binding domain affects catalysis in two *Lactobacillus* α -amylases. *Appl Environ Microbiol* **71**, 297–302.
- Southall SM, Simpson PJ, Gilbert HJ, Williamson G & Williamson MP (1999) The starch-binding domain from glucoamylase disrupts the structure of starch. *FEBS Lett* **447**, 58–60.
- Vu VV, Beeson WT, Span EA, Farquhar ER & Marletta MA (2014) A family of starch-active polysaccharide monooxygenases. *Proc Natl Acad Sci USA* **111**, 13822–13827.
- Lo Leggio L, Simmons TJ, Poulsen JN, Frandsen KEH, Hemsworth GR, Stringer MA, vonFreiesleben P, Tovborg M, Johansen KS, De Maria L *et al.* (2015) Structure and boosting activity of a starch-degrading lytic polysaccharide monooxygenase. *Nat Commun* **6**, 1–9.
- Sarian F, van der Kaaij R, Kralj S, Wijbenga D-J, Binnema D, van der Maarel M & Dijkhuizen L (2012) Enzymatic degradation of granular potato starch by *Microbacterium aurum* strain B8.A. *Appl Microbiol Biotechnol* **93**, 645–654.
- Valk V, Eeuwema W, Sarian FD, van der Kaaij RM & Dijkhuizen L (2015) Degradation of granular starch by the bacterium *Microbacterium aurum* strain B8.A involves a modular α -amylase enzyme system with FNIII and CBM25 domains. *Appl Environ Microbiol* **81**, 6610–6620.
- Gilbert HJ, Knox JP & Boraston AB (2013) Advances in understanding the molecular basis of plant cell wall polysaccharide recognition by carbohydrate-binding modules. *Curr Opin Struct Biol* **23**, 669–677.
- Machovič M & Janeček Š (2006) The evolution of putative starch-binding domains. *FEBS Lett* **580**, 6349–6356.
- Peng H, Zheng Y, Chen M, Wang Y, Xiao Y & Gao Y (2014) A starch-binding domain identified in α -amylase (AmyP) represents a new family of carbohydrate-binding modules that contribute to enzymatic hydrolysis of soluble starch. *FEBS Lett* **588**, 1161–1167.
- Janeček Š, Svensson B & MacGregor EA (2011) Structural and evolutionary aspects of two families of non-catalytic domains present in starch and glycogen binding proteins from microbes, plants and animals. *Enzyme Microb Technol* **49**, 429–440.
- Svensson B, Jespersen H, Sierks MR & MacGregor EA (1989) Sequence homology between putative raw-starch binding domains from different starch-degrading enzymes. *Biochem J* **264**, 309–311.
- Jiang T-Y, Ci Y-P, Chou W-I, Lee Y-C, Sun Y-J, Chou W-Y, Li K-M & Chang MD (2012) Two unique ligand-binding clamps of *Rhizopus oryzae* starch binding domain for helical structure disruption of amylose. *PLoS One* **7**, e41131.
- Morris VJ, Gunning AP, Faulds CB, Williamson G & Svensson B (2005) AFM images of complexes between amylose and *Aspergillus niger* glucoamylase mutants, native, and mutant starch binding domains: a model for the action of glucoamylase. *Starch-Starke* **57**, 1–7.
- Sumitani J, Tottori T, Kawaguchi T & Arai M (2000) New type of starch-binding domain: the direct repeat motif in the C-terminal region of Bacillus sp. no. 195 α -amylase contributes to starch binding and raw starch degrading. *Biochem J* **350**, 477–484.
- Boraston AB, Healey M, Klassen J, Ficko-Blean E, Lammerts van Bueren A & Law V (2006) A structural and functional analysis of α -glucan recognition by family 25 and 26 carbohydrate-binding modules reveals a conserved mode of starch recognition. *J Biol Chem* **281**, 587–598.

- 20 Scatchard G (1949) The attractions of proteins for small molecules and ions. *Ann N Y Acad Sci* **51**, 660–672.
- 21 Christiansen C & Hachem MA (2009) The carbohydrate-binding module family 20 – diversity, structure, and function. *FEBS J* **276**, 5006–5029.
- 22 Lammerts van Bueren A, Finn R, Ausió J & Boraston AB (2004) α -glucan recognition by a new family of carbohydrate-binding modules found primarily in bacterial pathogens. *Biochemistry* **43**, 15633–15642.
- 23 Kelley LA, Mezulis S, Yates CM, Wass MN & Sternberg MJE (2015) The Phyre2 web portal for protein modeling, prediction and analysis. *Nat Protoc* **10**, 845–858.
- 24 Notenboom V, Boraston AB, Kilburn DG & Rose DR (2001) Crystal structures of the family 9 carbohydrate-binding module from *Thermotoga maritima* xylanase 10A in native and ligand-bound forms. *Biochemistry* **40**, 6248–6256.
- 25 Boraston AB, Creagh AL, Alam MM, Kormos JM, Tomme P, Haynes CA, Warren RAJ & Kilburn DG (2001) Binding specificity and thermodynamics of a family 9 carbohydrate-binding module from *Thermotoga maritima* Xylanase 10A. *Biochemistry* **40**, 6240–6247.
- 26 Boraston AB, Bolam DN, Gilbert HJ & Davies GJ (2004) Carbohydrate-binding modules: fine-tuning polysaccharide recognition. *Biochem J* **382**, 769–781.
- 27 Hudson KL, Bartlett GJ, Diehl RC, Agirre J, Gallagher T, Kiessling LL & Woolfson DN (2015) Carbohydrate-aromatic interactions in proteins. *J Am Chem Soc*, jacs.5b08424.
- 28 Penninga D, Van Der Veen BA., Knegtel RMA, Van Hijum SA, Rozeboom HJ, Kalk KH, Dijkstra BW & Dijkhuizen L (1996) The raw starch binding domain of cyclodextrin glycosyltransferase from *Bacillus circulans* strain 251. *J Biol Chem* **271**, 32777–32784.
- 29 Ezkurdia I & Tress ML (2011) Protein structural domains: definition and prediction. *Curr Protoc Protein Sci Chapter 2* (Unit2), 14.
- 30 Dhir S, Pacurar M, Franklin D, Gaspari Z, Kertesz-Farkas A, Kocsor A, Eisenhaber F & Pongor S (2010) Detecting atypical examples of known domain types by sequence similarity searching: the SBASE domain library approach. *Curr Protein Pept Sci* **11**, 538–549.
- 31 Eickholt J, Deng X & Cheng J (2011) DoBo: Protein domain boundary prediction by integrating evolutionary signals and machine learning. *BMC Bioinformatics* **12**, 43.
- 32 Cheng J, Sweredoski MJ & Baldi P (2006) DOMpro: Protein domain prediction using profiles, secondary structure, relative solvent accessibility, and recursive neural networks. *Data Min Knowl Discov* **13**, 1–10.
- 33 Machius M, Wiegand G & Huber R (1995) Crystal structure of calcium-depleted *Bacillus licheniformis* α -amylase at 2.2 Å resolution. *J Mol Biol* **246**, 545–559.
- 34 Majzlová K & Janeček Š (2014) Two structurally related starch-binding domain families CBM25 and CBM26. *Biologia (Bratisl)* **69**, 1087–1096.
- 35 Marchler-Bauer A, Lu S, Anderson JB, Chitsaz F, Derbyshire MK, DeWeese-Scott C, Fong JH, Geer LY, Geer RC, Gonzales NR *et al.* (2011) CDD: a conserved domain database for the functional annotation of proteins. *Nucleic Acids Res* **39**, D225–D229.
- 36 Han Q, Liu N, Robinson H, Cao L, Qian C, Wang Q, Xie L, Ding H, Wang Q, Huang Y *et al.* (2013) Biochemical characterization and crystal structure of a GH10 xylanase from termite gut bacteria reveal a novel structural feature and significance of its bacterial Ig-like domain. *Biotechnol Bioeng* **110**, 3093–3103.
- 37 Mesnage S, Fontaine T, Mignot T, Delepierre M, Mock M & Fouet A (2000) Bacterial SLH domain proteins are non-covalently anchored to the cell surface via a conserved mechanism involving wall polysaccharide pyruvylation. *EMBO J* **19**, 4473–4484.
- 38 Kern J, Wilton R, Zhang R, Binkowski TA, Joachimiak A & Schneewind O (2011) Structure of surface layer homology (SLH) domains from *Bacillus anthracis* surface array protein. *J Biol Chem* **286**, 26042–26049.
- 39 Vaaje-kolstad G, Westereng B, Horn SJ, Liu Z, Zhai H, Sørli M & Eijsink VGH (2010) An oxidative enzyme boosting the enzymatic conversion of recalcitrant polysaccharides. *Science (80-.)* **330**, 219–222.
- 40 Novick RP (2000) Sortase: The surface protein anchoring transpeptidase and the LPXTG motif. *Trends Microbiol* **8**, 148–151.
- 41 Roche FM, Massey R, Peacock SJ, Day NPJ, Visai L, Speziale P, Lam A, Pallen M & Foster TJ (2003) Characterization of novel LPXTG-containing proteins of *Staphylococcus aureus* identified from genome sequences. *Microbiology* **149**, 643–654.
- 42 Warren FJ, Royall PG, Gaisford S, Butterworth PJ & Ellis PR (2011) Binding interactions of α -amylase with starch granules: the influence of supramolecular structure and surface area. *Carbohydr Polym* **86**, 1038–1047.
- 43 Paldi T, Levy I & Shoseyov O (2003) Glucoamylase starch-binding domain of *Aspergillus niger* B1: molecular cloning and functional characterization. *Biochem J* **372**, 905–910.
- 44 Bogracheva TY, Wang YL, Wang TL & Hedley CL (2002) Structural studies of starches with different water contents. *Biopolymers* **64**, 268–281.
- 45 Shoseyov O, Shani Z & Levy I (2006) Carbohydrate binding modules: biochemical properties and novel applications. *Microbiol Mol Biol Rev* **70**, 283–295.

- 46 Wheelan SJ, Marchler-Bauer A & Bryant SH (2000) Domain size distributions can predict domain boundaries. *Bioinformatics* **16**, 613–618.
- 47 Islam SA, Luo J & Sternberg MJ (1995) Identification and analysis of domains in proteins. *Protein Eng* **8**, 513–525.
- 48 Nelson KE, Weinstock GM, Highlander SK, Worley KC, Creasy HH, Wortman JR, Rusch DB, Mitreva M, Sodergren E, Chinwalla AT *et al.* (2010) A catalog of reference genomes from the human microbiome. *Science (80-)* **328**, 994–999.
- 49 Englyst HN & Macfarlane GT (1986) Breakdown of resistant and readily digestible starch by human gut bacteria. *J Sci Food Agric* **37**, 699–706.
- 50 Fuentes-Zaragoza E, Sánchez-Zapata E, Sendra E, Sayas E, Navarro C, Fernández-López J, Pérez-Alvarez JA (2011) Resistant starch as prebiotic: a review. *Starch/Stärke* **63**, 406–415.
- 51 Machovič M & Janeček Š (2006) Starch-binding domains in the post-genome era. *Cell Mol Life Sci* **63**, 2710–2724.
- 52 Silvi S, Rumney CJ, Cresci A & Rowland IR (1999) Resistant starch modifies gut microflora and microbial metabolism in human flora-associated rats inoculated with faeces from Italian and UK donors. *J Appl Microbiol* **86**, 521–530.
- 53 Ze X, Duncan SH, Louis P & Flint HJ (2012) *Ruminococcus bromii* is a keystone species for the degradation of resistant starch in the human colon. *ISME J* **6**, 1535–1543.
- 54 Yin Y, Mao X, Yang J, Chen X, Mao F & Xu Y (2012) dbCAN: a web resource for automated carbohydrate-active enzyme annotation. *Nucleic Acids Res* **40**, W445–W451.
- 55 Tamura K, Stecher G, Peterson D, Filipinski A & Kumar S (2013) MEGA6: Molecular evolutionary genetics analysis version 6.0. *Mol Biol Evol* **30**, 2725–2729.
- 56 Waterhouse AM, Procter JB, Martin DM, Clamp M & Barton GJ (2009) Jalview version 2—a multiple sequence alignment editor and analysis workbench. *Bioinformatics* **25**, 1189–1191.
- 57 Letunic I & Bork P (2011) Interactive Tree Of Life v2: online annotation and display of phylogenetic trees made easy. *Nucleic Acids Res* **39**, W475–W478.
- 58 Petersen TN, Brunak S, von Heijne G & Nielsen H (2011) SignalP 4.0: discriminating signal peptides from transmembrane regions. *Nat Methods* **8**, 785–786.
- 59 Aslanidis C & de Jong PJ (1990) Ligation-independent cloning of PCR products (LIC-PCR). *Nucleic Acids Res* **18**, 6069–6074.
- 60 Haun R, Serventi I & Moss J (1992) Rapid, reliable ligation-independent cloning of PCR products using modified plasmid vectors. *Biotechniques* **13**, 515–518.
- 61 Gasteiger E, Hoogland C, Gattiker A, Duvaud S, Wilkins MR, Appel RD & Bairoch A (2005) Protein identification and analysis tools on the ExpASY Server. In *The Proteomics Protocols Handbook*, pp. 571–607.
- 62 Voet D & Voet JG (1995) *Biochemistry*, 3rd edn. John Wiley & Sons, Inc., Hoboken, NJ.
- 63 Kemmer G & Keller S (2010) Nonlinear least-squares data fitting in Excel spreadsheets. *Nat Protoc* **5**, 267–281.
- 64 Lammerts van Bueren A, Saraf A, Martens EC & Dijkhuizen L (2015) Differential metabolism of exopolysaccharides from probiotic Lactobacilli by the human gut symbiont *Bacteroides thetaiotaomicron*. *Appl Environ Microbiol* **81**, 3973–3983.