

University of Groningen

Alexithymia influences brain activation during emotion perception but not regulation

van der Velde, Jorien; Gromann, Paula M.; Swart, Marte; Wiersma, Durk; de Haan, Lieuwe; Bruggeman, Richard; Krabbendam, Lydia; Aleman, Andre

Published in:
Social Cognitive and Affective Neuroscience

DOI:
[10.1093/scan/nsu056](https://doi.org/10.1093/scan/nsu056)

IMPORTANT NOTE: You are advised to consult the publisher's version (publisher's PDF) if you wish to cite from it. Please check the document version below.

Document Version
Publisher's PDF, also known as Version of record

Publication date:
2015

[Link to publication in University of Groningen/UMCG research database](#)

Citation for published version (APA):

van der Velde, J., Gromann, P. M., Swart, M., Wiersma, D., de Haan, L., Bruggeman, R., ... Aleman, A. (2015). Alexithymia influences brain activation during emotion perception but not regulation. *Social Cognitive and Affective Neuroscience*, 10(2), 285-293. <https://doi.org/10.1093/scan/nsu056>

Copyright

Other than for strictly personal use, it is not permitted to download or to forward/distribute the text or part of it without the consent of the author(s) and/or copyright holder(s), unless the work is under an open content license (like Creative Commons).

Take-down policy

If you believe that this document breaches copyright please contact us providing details, and we will remove access to the work immediately and investigate your claim.

Downloaded from the University of Groningen/UMCG research database (Pure): <http://www.rug.nl/research/portal>. For technical reasons the number of authors shown on this cover page is limited to 10 maximum.

Alexithymia influences brain activation during emotion perception but not regulation

Jorien van der Velde,¹ Paula M. Gromann,² Marte Swart,³ Durk Wiersma,⁴ Lieuwe de Haan,⁵ Richard Bruggeman,⁴ Lydia Krabbendam,² and André Aleman^{1,6}

¹Neuroimaging Center, University of Groningen, University Medical Center Groningen, 9713 AW Groningen, The Netherlands, ²Department of Educational Neuroscience, Faculty of Psychology and Education, VU University Amsterdam, 1081 BT Amsterdam, The Netherlands, ³Lentis, Center for Mental Healthcare, 9725 AG Groningen, The Netherlands, ⁴Department of Psychiatry & Rob Giel Research Center, University Medical Center Groningen, 9713 GZ Groningen, The Netherlands, ⁵Department of Psychiatry, Academic Medical Center Amsterdam, University of Amsterdam, 1105 AZ Amsterdam, The Netherlands and ⁶Department of Experimental Psychology, University of Groningen, 9712 TS Groningen, The Netherlands

Alexithymia is a psychological construct that can be divided into a cognitive and affective dimension. The cognitive dimension is characterized by difficulties in identifying, verbalizing and analysing feelings. The affective dimension comprises reduced levels of emotional experience and imagination. Alexithymia is widely regarded to arise from an impairment of emotion regulation. This is the first functional magnetic resonance imaging (fMRI) study to critically evaluate this by investigating the neural correlates of emotion regulation as a function of alexithymia levels. The aim of the current study was to investigate the neural correlates underlying the two alexithymia dimensions during emotion perception and emotion regulation. Using fMRI, we scanned 51 healthy subjects while viewing, reappraising or suppressing negative emotional pictures. The results support the idea that cognitive alexithymia, but not affective alexithymia, is associated with lower activation in emotional attention and recognition networks during emotion perception. However, in contrast with several theories, no alexithymia-related differences were found during emotion regulation (neither reappraisal nor suppression). These findings suggest that alexithymia may result from an early emotion processing deficit rather than compromised frontal circuits subserving higher-order emotion regulation processes.

Keywords: alexithymia; emotion processing; emotion regulation; amygdala; neuroimaging

Alexithymia ('no words for feelings') is a psychological construct characterized by difficulties in identifying and describing one's feelings, and in distinguishing them from bodily sensations of arousal. Individuals with high scores on alexithymia may further show a lack of imagination and an externally oriented thinking style with a lack of introspection (Sifneos, 1973; Vorst and Bermond, 2001). Alexithymia can be divided into an affective and a cognitive dimension (Vorst and Bermond, 2001). The cognitive alexithymia dimension comprises the subscales difficulties in identifying, analysing and verbalizing feelings, while the affective dimension consists of the subscales emotionalizing (the degree to which someone is emotionally aroused by emotional stimuli) and fantasizing (the degree to which someone is inclined to imagine). Based on these dimensions, Bermond proposed to distinguish two subtypes of alexithymia [Type I and Type II; (Bermond *et al.*, 2007)]. Type I alexithymia is characterized by high scores on both dimensions (i.e. lower cognitive emotional processing capacities and lower emotional arousal). Type II is characterized by high scores on the cognitive dimension, but normal or even low scores on the affective dimension (i.e. lower cognitive emotional processing capacities, but normal or heightened emotional arousal). Recent studies have suggested that the two alexithymia dimensions might be differently related to the development of psychopathology (Moonmann *et al.*, 2008; Van der Meer *et al.*, 2009). Therefore, it is of relevance to gain insight into the neural bases underlying these two dimensions.

Individuals with high scores on alexithymia experience difficulties in emotion processing. Furthermore, alexithymia is generally regarded to be an emotion regulation impairment (Taylor *et al.*, 1997; Taylor and Bagby, 2004; Aleman, 2005; Wingbermühle *et al.*, 2012). However, as far as we know, the neural correlates of emotion regulation in alexithymia through functional neuroimaging have not yet been investigated.

Emotion processing can be seen as a three-phase process with (i) the identification of the emotional significance of a stimulus, (ii) the generation of an affective state and (iii) emotion regulation (Phillips *et al.*, 2003). Previous research has suggested that problems in emotion processing related to alexithymia may already occur during the first two phases of emotion processing. For example, individuals with high scores on alexithymia show deficits in the identification of facial expressions (Swart *et al.*, 2009; Grynberg *et al.*, 2012) and declined attention towards emotional stimuli (Mueller *et al.*, 2006). Furthermore, studies have indicated that individuals with high scores on alexithymia differ in their physiological responses to emotional stimuli (Roedema and Simons, 1999; Bermond *et al.*, 2010), which might reflect differences in the generation of affective states. Phillips and colleagues (2003) suggested that a ventral system, including the amygdala, insula, ventral striatum, ventral anterior cingulate cortex (ACC) and the ventral prefrontal cortex, is involved during the first two phases of emotion processing. Previous studies investigating alexithymia-related brain activation have reported activation differences in this system (Bermond *et al.*, 2006; van der Velde *et al.*, 2013). As far as we know, only one study examined the neural correlates of the two alexithymia dimensions separately through functional magnetic resonance imaging (fMRI) during emotion processing (Pouga *et al.*, 2010), linking the cognitive dimension to lower amygdala activation and the Emotionalizing factor of the affective dimension to higher ACC and lower premotor activation. This indicates that the cognitive and affective alexithymia dimensions may be associated with separable neural correlates during the first two phases of emotion processing.

Received 14 October 2013; Revised 21 February 2014; Accepted 16 April 2014

Advance Access publication 23 April 2014

The GROUP study is supported by a grant from ZonMw, within the Mental Health programma (project number: 10.000.1002). A.A. is supported by a VICI grant from N.W.O., grant number 435-11-004. L.K. is supported in part by a VICI grant from N.W.O., grant number: 435-11-005. We would like to thank the families who invested time and effort to make the GROUP project possible. Furthermore, we would like to acknowledge Anita Sibeijn-Kuiper, Judith Streurman, Edith Liemburg and Michelle Servaas for their assistance with fMRI scanning and Dr Remco Renken for his advice regarding fMRI statistics.

Correspondence should be addressed to Jorien van der Velde, Department of Neuroscience, Neuroimaging Center, UMCG-0&0, P.O. Box 196, 9700 AD Groningen, The Netherlands. E-mail: jorien.van.der.velde@umcg.nl

Emotion regulation, the third phase of emotion processing, is defined as the inhibition or modulation of the affective state and the emotional response (Phillips *et al.*, 2003). Gross (1998) described reappraisal and suppression, two often applied and widely studied regulation strategies. Reappraisal is a strategy used to change the initial emotional response in such a way that it decreases (e.g. making a negative stimuli less negative), while suppression focuses on inhibiting emotional expressive behavior (e.g. not showing how you feel) (Gross, 1998). Aleman (2005) proposed that alexithymia would be related to difficulties in emotion regulation. Indeed, several studies suggested that individuals with alexithymia seem to apply more suppression, a less efficient strategy, while applying less reappraisal in comparison with non-alexithymic subjects (Swart *et al.*, 2009; Kessler *et al.*, 2010; Wingenfeld *et al.*, 2011; Stasiewicz *et al.*, 2012). However, others have failed to show this association (Geenen *et al.*, 2012; Weiss *et al.*, 2012). During reappraisal, activation in the ventromedial prefrontal cortex and in a dorsal system, including the inferior frontal gyrus, the dorsal ACC and the dorsal medial frontal cortex, increases [for meta-analysis, see (Diekhof *et al.*, 2011)]. By increasing activation in these areas, amygdala activation is consequently reduced, resulting in lower negative affect. Research on suppression indicates increased activation in areas involved in inhibitory control, such as the dorsolateral prefrontal cortex (DLPFC), supplementary motor area, inferior parietal cortex and the precuneus (Goldin *et al.*, 2008; Vanderhasselt *et al.*, 2012). The increased activation in these areas probably results in the restricted facial expression during suppression (Vanderhasselt *et al.*, 2012). Alexithymia-related activation differences during emotion regulation are not yet investigated through fMRI. However, an electroencephalography (EEG) study indicated that during reappraisal, P3 amplitudes in the DLPFC, fusiform gyrus and inferior temporal gyrus decrease in a low alexithymia group, but not in a high alexithymia group (Pollatos and Gramann, 2012). Furthermore, during suppression event-related potentials are negatively correlated to alexithymia (Walker *et al.*, 2011). These findings suggest that alexithymia might be related to differential brain activation patterns during emotion regulation.

The current study is the first fMRI study on emotion regulation in alexithymia. We aimed to investigate neural correlates as a function of the cognitive and affective alexithymia dimensions during the different phases of emotion processing. To this extent, we presented 51 subjects differing in alexithymia scores with an emotion regulation task. The task consisted of an emotion perception part in which subjects viewed negative or neutral pictures, followed by an emotion regulation part where subjects were instructed to either attend to, reappraise or suppress the emotional content of the picture. We hypothesize that the two alexithymia dimensions are associated with separable neural correlates. We suggest that during the first two phases of emotion processing, the cognitive alexithymia dimension will be associated with decreased activation in brain areas involved in the identification of emotions (such as the amygdala) while the affective dimension is proposed to be associated with activation in areas involved in emotional awareness (such as the ACC). During reappraisal we expect to find lower activation in the dorsal system (e.g. DLPFC) associated with the cognitive dimension, as reappraisal can be seen as a cognitive task (Ochsner and Gross, 2005).

METHOD

Participants

Fifty-one healthy subjects were included from a multi-center (Groningen and Amsterdam) add-on study from the GROUP project [Genetic Risk & Outcome of Psychosis, (Korver *et al.*, 2012)]. This sample did not overlap with previous fMRI studies from our group

(Swart *et al.*, 2011; Liemburg *et al.*, 2012; Goerlich Dobre *et al.*, 2014). Participants reported no presence or history of any neurological or psychiatric disorder, which was confirmed with a diagnostic interview. Furthermore, there were no psychotic or mood disorders present in the first-degree relatives of the participants. Demographic variables are presented in Table 1.

Behavioral measurements

Diagnostic interviews

During the assessment of the GROUP study (max. 2 years prior to the fMRI scan), all participants were screened with a diagnostic interview. The SCAN interview [Schedules for the Clinical Assessment of Psychiatry (Wing *et al.*, 1990)] was used to assess the current psychiatric state and psychiatric history of all the participants from the Groningen sample. For the sample from Amsterdam, the CASH [Comprehensive Assessment of Symptoms and History (Andreasen *et al.*, 1992)] was applied for assessing diagnosis and psychopathology. When participants had been given a clinical diagnosis, they were excluded from the study. Prior to the fMRI session, participants were asked if there were any changes in their psychological well-being since the last GROUP assessment. If participants reported relevant changes in mood, psychotic symptoms or anxiety, they were excluded from the study.

Bermond–Vorst Alexithymia Questionnaire

The Bermond–Vorst Alexithymia Questionnaire (BVAQ) is a 40-item self-report scale used to assess alexithymia. The BVAQ consists of five subscales (eight items per scale), Identifying, Verbalizing, Analysing, Emotionalizing and Fantasizing as defined by Nemiah and Sifneos (1970). Answers were rated on a five-point Likert scale (1 = certainly does not apply to me, 5 = certainly does apply to me), with higher scores indicating more pronounced alexithymic characteristics. Previous studies have confirmed the five-factor structure of the BVAQ and have shown that the BVAQ has good psychometric properties (Zech *et al.*, 1999; Berthoz *et al.*, 2000; Vorst and Bermond, 2001).

Using the BVAQ, a second-order distinction can be made in which the subscales Emotionalizing and Fantasizing are grouped into an affective dimension, and the subscales Identifying, Verbalizing and Analysing feelings into a cognitive dimension of alexithymia. The validity of this two-factor structure has been demonstrated by factor analyses (Bailey and Henry, 2007; Bekker *et al.*, 2007; Bermond *et al.*, 2007). However, others failed to provide support for this two-factor structure (Bekker *et al.*, 2007; Bagby *et al.*, 2009). In the current sample, the existence of the cognitive dimension was supported by significant correlations between the three sub-factors of the cognitive dimension ($r = .44$ till $.65$; $P \leq .001$). However, the two sub-factors of the affective dimension were not correlated to each other ($r = .07$; $P = .62$). Therefore, the Emotionalizing and Fantasizing sub-factors were treated as separate variables, in line with the approach of previous studies (Bekker *et al.*, 2007; Goerlich-Dobre *et al.*, 2014). In 2008, Deborde and colleagues developed cut-off scores based on the BVAQ-B. The BVAQ-B is a shorter version of the BVAQ, which is calculated by summing up the scores on items 21 through 40 (Zech *et al.*, 1999). To give an indication of severity of alexithymia in our sample, BVAQ-B scores were calculated. A score of 53 or higher indicates high alexithymia, while scores of 43 or lower indicate low alexithymia (Deborde *et al.*, 2008).

Emotion Regulation Questionnaire

The use of the emotion regulation strategies, reappraisal and suppression, was assessed through the Emotion Regulation Questionnaire (ERQ) (Gross and John, 2003). The ERQ consists of 10 items of

Table 1 Mean scores of demographic data, questionnaire data and rating scores on the emotion regulation task and the associations with alexithymia

Demographic or behavioral variable	Mean (SD)	Statistics Cognitive dimension		Statistics Emotionalizing ^a		Statistics Fantasizing	
Gender (n male)	28	$t = 1.28$	$P = .21$	$U = 177$	$P = .006^*$	$t = -.98$	$P = .33$
Handedness (n right)	44	$t = -.26$	$P = .79$	$U = 133$	$P = .56$	$t = .23$	$P = .82$
Scanner site (n Groningen)	24	$t = -.86$	$P = .40$	$U = 312$	$P = .82$	$t = -.26$	$P = .80$
Age (years)	37.1 (10.3)	$r = -.16$	$P = .25$	$\rho = -.01$	$P = .95$	$r = .15$	$P = .30$
Education (years)	17.1 (0.8)	$r = -.14$	$P = .34$	$\rho = -.06$	$P = .70$	$r = -.11$	$P = .42$
ERQ							
Reappraisal	5.0 (1.0)	$r = -.16$	$P = .25$	$\rho = .18$	$P = .22$	$r = .07$	$P = .64$
Suppression	2.8 (1.2)	$r = .63$	$P < .001^{**}$	$\rho = .20$	$P = .16$	$r = -.19$	$P = .18$
PANAS							
Positive affect	32.7 (6.0)	$r = -.16$	$P = .26$	$\rho = -.07$	$P = .62$	$r = .16$	$P = .28$
Negative affect	13.1 (4.5)	$r = -.09$	$P = .53$	$\rho = -.34$	$P = .02^*$	$r = .26$	$P = .06$
Rating scores							
Attend neutral	1.1 (0.2)	$\rho = .21$	$P = .15$	$\rho = -.12$	$P = .41$	$r = -.06$	$P = .60$
Attend negative	2.6 (0.5)	$\rho = -.02$	$P = .87$	$\rho = -.28$	$P = .04^*$	$r = -.04$	$P = .80$
Reappraise	2.1 (0.6)	$\rho = .02$	$P = .90$	$\rho = -.16$	$P = .27$	$r = -.12$	$P = .62$
Suppress	2.4 (0.6)	$\rho = .06$	$P = .65$	$\rho = -.13$	$P = .37$	$r = -.08$	$P = .81$

^aNon-parametric testing due to non-normality; *significant at $P < .05$, not surviving multiple comparison correction; **significant at $P < .001$ (controlled for multiple comparisons). ERQ, Emotion regulation questionnaire; PANAS, Positive and negative symptom scale; SD, standard deviation.

which four examine suppression and six examine reappraisal. On a seven-point scale subjects had to rate to what extent a certain statement applied to them (strongly disagree till strongly agree). The ERQ has been proven to be a reliable and valid measure of emotion regulation (Gross and John, 2003). To get a clear view on the relationship between the two strategies, the total scores of both subscales were divided by the number of items per subscale.

Positive and Negative Affect Scale

The positive and negative affect scale (PANAS) (Watson *et al.*, 1988) was used to measure the current affective state. The scale consists of 10 positive affect items (reflecting the extent to which a person feels enthusiastic, active and alert) and 10 negative affect items (reflecting distress, anger, fear and guilt). Participants rated on a five-point scale to what extent they experienced certain mood states. The PANAS has been proven to be a reliable and valid measure of positive and negative affect (Crawford and Henry, 2004).

Emotion regulation task

The emotion regulation task [adapted from (Ochsner and Gross, 2005)] consisted of four conditions, Attend Neutral, Attend Negative, Reappraise and Suppress. The stimuli were 66 negative (mean valence: 2.54, mean arousal: 5.83) and 22 neutral pictures (mean valence: 5.10, mean arousal: 3.26) from the International Affective Picture System. Each trial was constructed as follows. First, a picture appeared with the instruction 'view' (View condition, 2 s). After that, the word 'view' changed in one of the following instructions: 'reappraise', 'suppress' or 'attend' (Regulation condition, 4 s). Reappraise meant that the participants had to reappraise the picture in such a way that it became less emotionally disturbing. During suppression, subjects were instructed to refrain from expressing their emotions, in a way that bystanders would not be able to read their emotions by looking at their face. During attend, participants just had to look closely at the picture and not change the way they were feeling. The 22 neutral pictures were always paired with the 'attend' instruction. Negative pictures could be paired with either reappraise (22 pictures), suppress (22 pictures) or attend (22 pictures). Following regulation, a black screen appeared (2 s). Subsequently, participants were asked to rate how negative they were feeling on a four-point scale (1 = not negative at all; 4 = extremely negative) (3 s). After

rating negative affect the word 'relax' appeared (4 s) allowing participants to relax, followed by a black screen (0.5 s) to alert participants the next trial was coming. A single trial lasted for 15.5 s. After 9 or 10 trials, a fixation cross appeared for 20 s. The trial order was randomized using a randomized block design.

Prior to the fMRI scan, a short training was given to teach the application of reappraisal and suppression strategies. During this training, participants practiced the different strategies on negative pictures by telling the researchers how they would apply the strategy.

Data acquisition

MRI data were acquired using two 3.0-Tesla whole body scanners (Philips Intera, Best, The Netherlands) located at the University Medical Center Groningen and at the Academic Medical Center in Amsterdam. Both systems were equipped with an 8-SENSE head coil and scan parameters were set identical. The functional images were acquired by a T2-weighted echo producing 37 slices 3.5 mm thick with no gap. The images were slightly tilted (30 degrees) to prevent artifacts due to nasal cavities. The functional scans were made in the axial plane [TR = 2 s; TE = 30 s; flip angle (α) = 70°; FOV = 224.0, 129.5, 224.0; in-plane resolution 64 × 62 pixels; isotropic voxels of 3.5 mm] and were scanned interleaved. The T1-weighted anatomical image (170 slices; isotropic voxels of 1 mm; TR = 9 ms; TE = 3.54 ms; α = 8°; FOV 256 mm) was acquired in the bicommissural plane, covering the whole brain.

Statistical analyses

Behavioral analyses were performed using SPSS 20 (SPSS Inc., Chicago, IL, USA). To calculate the main effect of condition on the negative affect rating scores from the emotion regulation task, a Friedman's ANOVA was applied due to non-normality of the ratings scores. Post hoc analyses were performed with a Wilcoxon signed-rank test and corrected for multiple testing using a Bonferroni correction. To examine the effect of alexithymia on the rating scores, non-parametric Spearman's correlations were performed. To examine whether the cognitive alexithymia dimension and the Fantasizing sub-factor were associated with demographic variables, ERQ scores and PANAS scores, two-sample *t*-tests and Pearson correlations were performed. The associations with the Emotionalizing sub-factor were calculated using non-parametric tests due to non-normality of this sub-factor. For all

calculated associations with alexithymia, the significance level was set at $P < .001$ to control for multiple testing (Bonferroni correction for 39 tests). Furthermore, Spearman's correlations were performed between the ERQ reappraisal and suppression scores and the negative affect rating scores of the emotion regulation task. For these analyses, the threshold was set to $P < .006$ (correcting for eight tests).

The fMRI data were analysed using Statistical Parametric Mapping (SPM 8) (www.fil.ion.ucl.ac.uk) using Matlab 7 (The MathWorks Inc., Natick, MA, USA). Before processing the data, all images were checked for artifacts. Slice timing was applied to the functional images and the functional data were spatially realigned, resliced and coregistered. The anatomical data were segmented. To enhance the accuracy of inter-subject alignment, the Diffeomorphic Anatomical Registration Through Exponentiated Lie algebra (DARTEL) approach was used to create a grey matter template based on the grey matter segmented images of all subjects. This created template was used to normalize the functional images to and affine-transform them into Montreal Neurological Institute (MNI) stereotactic space. Data were smoothed with a full-width half-maximum Gaussian kernel of 6 mm. Subject head movement greater than 3 mm in more than one direction resulted in exclusion of the data.

Sixteen task-related regressors were modelled with a boxcar function convolving a haemodynamic response function. The regressors View and Relax were divided into View/Relax neutral and View/Relax negative. The other regressors—Regulation, Linger and Rating—were subdivided into a Reappraise, Suppress, Attend Negative and Attend Neutral part. Additionally, the realignment parameters and the first derivatives thereof were entered as covariates to correct for the effects related to head motion (Friston *et al.*, 1996). Five contrasts were made for each participant: (i) View Neutral versus Baseline; (ii) View Negative versus View Neutral; (iii) Attend Negative versus Attend Neutral; (iv) Reappraise versus Attend Negative; (v) Suppress versus Attend Negative.

To examine task-related activation, one-sample *t*-tests were conducted. Sex, handedness and scanner site (Amsterdam vs Groningen) were entered as covariates of no interest. To examine the effect of the cognitive alexithymia dimension on task-related activity (positive and negative correlations), the demeaned scores of the cognitive dimension of the BVAQ were entered as a covariate of interest in a whole brain multiple regression analyses with sex, handedness, site and the sum of the Emotionalizing and Fantasizing sub-factors as nuisance variables. Additional regression models were created for the three cognitive subscales of the BVAQ separately as covariates of interest to explore whether the observed correlations with the cognitive dimension were driven by specific subscales. To examine brain activation related to the affective alexithymia dimension (positive and negative correlations), two separate multiple regression models were created for the Emotionalizing and Fantasizing sub-factors. In both models, the cognitive dimension, sex, handedness and site were included as nuisance variables.

To limit possible false positives due to multiple comparisons, effects had to meet $P < .05$ family-wise error (FWE) corrected at the cluster level to be considered statistically significant (initial height-threshold for all the analyses was set at $P < .001$). Because of specific hypotheses regarding the amygdala, a small volume correction (SVC) was applied if this region would not show in the whole-brain analyses.

RESULTS

Behavioral results

Alexithymia scores

Mean alexithymia scores, range and internal consistencies of the BVAQ are presented in Table 2. Alexithymia was not significantly related to

any of the demographic variables, including sex, handedness, age and scanner site (see Table 1 for test statistics). The Fantasizing and Emotionalizing sub-factors were not significantly correlated to the cognitive dimension ($r = -.13, P = .38; r = .08, P = .61$, respectively). Of our 51 participants, 12 participants could be classified as alexithymic and 24 as non-alexithymic as indicated by the cut-off scores of Deborde *et al.* (2008) based on the recalculated scores of the BVAQ-B (Zech *et al.*, 1999).

The cognitive dimension was positively correlated with the ERQ suppression scores, but not with ERQ reappraisal. The Fantasizing and Emotionalizing sub-factors did not correlate significantly with either reappraisal or suppression. Furthermore, no significant correlations were found between PANAS positive or negative factors and alexithymia, except from a small negative correlation between the Emotionalizing sub-factor and negative affect (not surviving multiple comparison correction) (see Table 1).

Rating scores of emotion regulation task

A significant main effect of condition (Attend Neutral, Attend Negative, Reappraise and Suppress) was observed on the ratings of the emotion regulation task [$\chi^2(3) = 106.55, P < .001$]. Post hoc tests revealed that negative stimuli were rated more negatively than neutral stimuli ($Z = 6.15, P < .001$). Furthermore, the participants were able to reduce their negative affect through reappraisal ($Z = -5.24, P < .001$) and suppression ($Z = -3.02, P = .003$) in comparison with attending negative stimuli. The cognitive dimension, Fantasizing and Emotionalizing, were not significantly associated with any of the rating scores, except for a small negative correlation between negative affect scores during attend and the Emotionalizing factor (not surviving multiple comparison correction) (see Table 1). The correlation between the ERQ reappraisal subscale and the rating scores of negative affect after reappraisal was marginally significant ($\rho = -.356; P = .01$, not reaching our threshold of $P < .006$). No other significant correlations were found between the ERQ and rating scores ($P > .1$).

NEUROIMAGING RESULTS

Main effects of emotion regulation task

The first two seconds of viewing a negative picture compared with viewing a neutral picture revealed higher activation in various emotion processing areas, such as the right fusiform gyrus, left anterior insula, left middle cingulate gyrus, the bilateral inferior and superior parietal gyrus and the right amygdala (see Figure 1A; for more specific details and a full overview of the results, see Supplementary Table S1). The left amygdala reached significance after applying a SVC ($k = 29; -16, -2, -14 [x, y, z]; Z = 4.33$). The four seconds of attending to a negative picture (after two seconds of viewing) yielded significantly higher

Table 2 Mean, standard deviation, range and Cronbach's alpha of the alexithymia scores

Variable	Mean (SD)	Range	Cronbach's alpha
Affective dimension			
Emotionalizing	20.0 (3.9)	13–27	.54
Fantasizing	21.6 (7.3)	9–40	.87
Cognitive dimension	48.0 (13.7)	26–84	.90
Identifying	13.8 (5.3)	8–29	.78
Verbalizing	18.9 (6.4)	9–35	.86
Analysing	15.3 (5.0)	8–28	.81
Recalculated BVAQ-B	44.5 (8.6)	29–62	.73

BVAQ, Bermond–Vorst alexithymia questionnaire; SD, standard deviation.

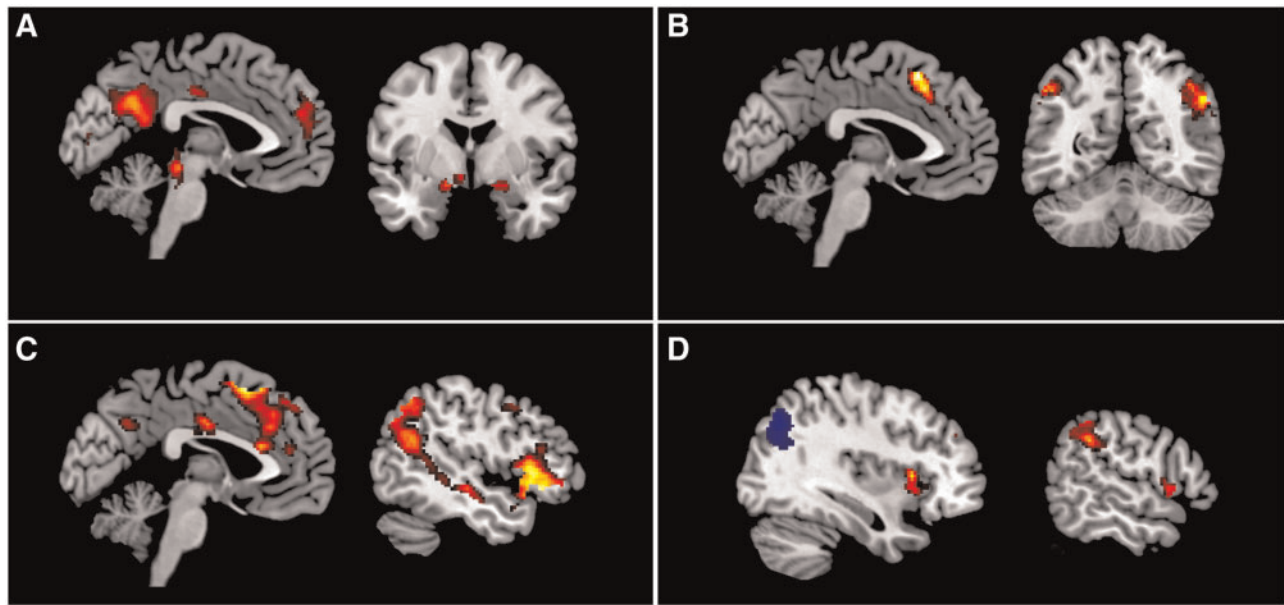


Fig. 1 Main effects of emotion processing and emotion regulation. (A) Increased activation during negative picture viewing compared with neutral picture viewing. (B) Increased activation during the 3rd till 6th second of attending a negative picture compared with a neutral picture. (C) Increased activation during the reappraisal of a negative picture compared with attending. (D) Increased (red) and decreased (blue) activation during the suppression of a negative picture compared with attending. Results are displayed at $P < .001$, with a $P < .05$ FWE correction at cluster level and overlaid on a MNI template brain.

activation in the left medial frontal gyrus, left middle and inferior frontal gyrus and the bilateral angular and inferior parietal gyrus, in comparison with attending a neutral picture (see Figure 1B and Supplementary Table S1). Reappraising negative pictures in comparison with the attending condition yielded, amongst others, higher activation in the left inferior frontal gyrus, bilateral dorsal medial prefrontal cortex and dorsal ACC (see Figure 1C and see Supplementary Table S1 for full details on all the significant findings). No activation decreases were found for any of the abovementioned contrasts. Suppressing compared with attending negative pictures, led to higher activation in the bilateral insula, supramarginal gyrus, bilateral middle cingulate gyrus, right middle frontal gyrus and the right superior frontal gyrus. Furthermore, activation was lower in the bilateral occipital cortex and the left postcentral gyrus (see Figure 1D and Supplementary Table S1).

Alexithymia-related brain activation

During the contrast 'view negative > view neutral' the cognitive dimension of alexithymia was associated with lower activation in the left inferior parietal cortex, the left fusiform gyrus and the bilateral precuneus (see Figure 2A and Table 3). This decrease in activation was driven by the sub-factor Identifying and the sub-factor Verbalizing. Verbalizing was associated with lower activation in the right precuneus, left fusiform gyrus and the right postcentral gyrus (see Figure 2B and Table 3). The Identifying sub-factor correlated negatively with various emotion processing areas, such as the bilateral inferior frontal gyrus, left parietal cortex, the right precuneus, the right supramarginal gyrus and left superior temporal cortex (see Figure 2C and Table 3). The amygdala was not found to be significantly correlated to alexithymia in the whole brain analyses. However, significant lower activation in the right amygdala in association with the Identifying subscale was reached after applying a SVC ($k = 25; 28, 0, -12 [x, y, z]; Z = 4.12$). No positive correlations were found with the cognitive dimension. Furthermore, the Fantasizing and Emotionalizing sub-factors did not correlate (positive nor negative) with brain activation during negative

emotion picture viewing. Scatterplots of all alexithymia-related brain activation differences are depicted in Supplementary Figures S1–S3. The Identifying sub-factor contained one outlier (>3 s.d.). To examine the influence of this outlier, the Cook's distance was calculated and the scatterplots were visually inspected. This procedure resulted in the exclusion of two findings (depicted in red, in Supplementary Figure S2). No significant alexithymia-related activation (positive nor negative) was found during the Attend, Reappraise or Suppress condition with either the cognitive dimension nor the Fantasizing and Emotionalizing sub-factors.

DISCUSSION

The aim of the current study was to examine neural correlates as a function of alexithymia during emotion perception and regulation. Furthermore, we wanted to investigate whether these neural correlates differed for the cognitive dimension and the sub-factors of the affective alexithymia dimension. Our results indicate that the cognitive alexithymia dimension is associated with lower activation in a widespread emotion attention and recognition network during the initial phase of emotion perception. No alexithymia-related brain activation differences were found in a later phase of emotion regulation.

Basic emotion processing

Our emotion perception task reliably activated key regions that have been shown to be involved in emotion processing, such as the amygdala, insula and medial prefrontal cortex (Phan *et al.*, 2004; Fusar-Poli *et al.*, 2009). In association with cognitive alexithymia (Identifying sub-factor), we found lower activation in a part of the ventral system as defined by Phillips and colleagues (2003), namely the right amygdala, during emotion perception. This is in concordance with previous studies that also reported negative correlations between right amygdala activation and the Identifying sub-factor (Kugel *et al.*, 2008; Pouga *et al.*, 2010; Reker *et al.*, 2010). The amygdala is an important area in directing bottom-up attention towards emotional stimuli (Vuilleumier, 2005). When presented with a relevant stimulus, the

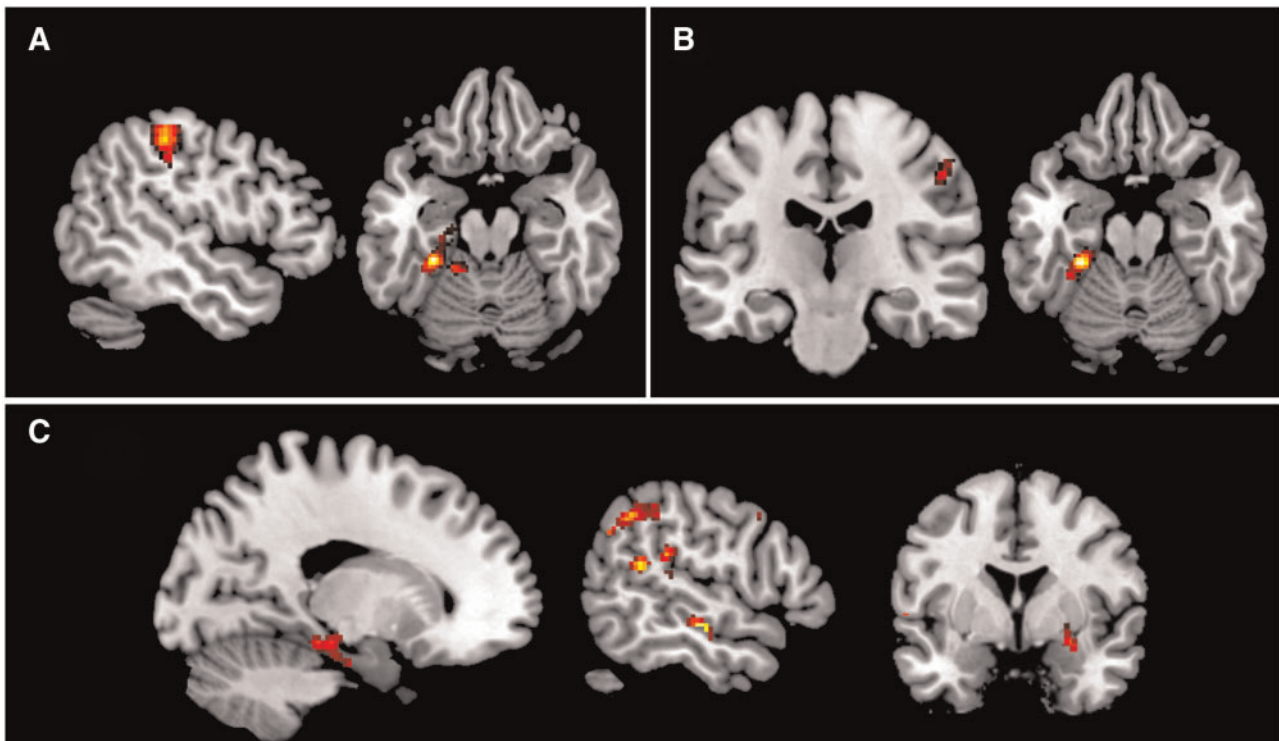


Fig. 2 Alexithymia-related brain activation differences during emotion processing and expressive suppression. (A) Decreased activation during negative picture viewing associated with the cognitive alexithymia dimension. (B) Decreased activation during negative picture viewing associated with the Verbalizing subscale. (C) Decreased activation during negative picture viewing associated with the Identifying subscale. Results are overlaid on an MNI template brain and displayed at $P < .001$, with a $P < .05$ FWE correction at cluster level, except for the amygdala (right picture under C), which displays the result of the SVC.

amygdala becomes activated and subsequently activates occipital areas directing visual attention towards the stimulus (Vuilleumier, 2005; Jacobs *et al.*, 2012). Therefore, lower activation in this area might indicate that attention is less automatically directed towards emotional stimuli in alexithymia and might explain the emotional attention deficits in alexithymia as reported by various behavioral studies (Suslow *et al.*, 2003; Mueller *et al.*, 2006).

Furthermore, we found lower activation in association with cognitive alexithymia in several other emotion processing areas, such as the inferior parietal lobe, the superior temporal cortex, the somatosensory cortex and the parahippocampal gyrus, which is in accordance with previous findings (Kano *et al.*, 2003; Duan *et al.*, 2010; Reker *et al.*, 2010). According to Adolphs (2002a,b), all of these regions are involved in emotion recognition. After the fast direction of attention involving the amygdala and occipital cortex, the superior temporal cortex and hippocampal formation become activated to retrieve conceptual knowledge about the emotion and to generate an emotional reaction (Adolphs, 2002b). Subsequently, connections to, amongst others, the motor and somatosensory areas lead to emotional awareness and recognition (Adolphs, 2002a). These results might explain the worse performance of alexithymic individuals on emotional perception and recognition tasks (Lane *et al.*, 1996; Swart *et al.*, 2009) and might account for the problems in recognizing feelings in themselves and others.

Furthermore, the DLPFC, part of the dorsal system, was less activated during emotion perception. Together with the lower activation found in the inferior parietal lobe this might suggest less functioning of the frontoparietal attention network (Corbetta, 1998; Corbetta *et al.*, 2008). When attention is not automatically directed towards emotional stimuli, visual attention can be enhanced by this top-down attention network (Ochsner *et al.*, 2009). Lower activation in this

network could suggest that individuals with higher scores on alexithymia are overall less inclined to direct their visual attention towards emotional stimuli.

In contrast to our hypotheses, we did not find any significant associations between the Fantasizing or Emotionalizing sub-factors of the affective dimension and brain activation during emotion perception, while previous studies did suggest specific neural correlates to underlie this dimension (Pouga *et al.*, 2010; Goerlich *et al.*, 2012). These findings are in accordance with the EEG study of Goerlich and colleagues (2012) in which the cognitive dimension was associated with larger early N1 potentials, while the affective dimension did not influence these early brain potentials. It is possible that the lower activation in the early emotional attention regions is specifically underlying the problems in the cognitive processing of emotion, such as identifying, and that it is less important for the guidance of physiological responses to emotions (e.g. emotion arousal). However, Goerlich and colleagues (2012) showed that the affective dimension was specifically related to a reduction of brain potentials in a later phase of emotion processing (e.g. P3), while we were unable to show activation differences related to either the cognitive or affective (Emotionalizing and Fantasizing) dimension in a later phase of emotion processing (the Attend condition). It could be that these effects were too subtle to detect in the current task. Future research combining fMRI and physiological data could give more insight into these processes. Furthermore, research applying tasks specifically designed to generate affective states or imagination (for example Aust *et al.*, 2014; Mantani *et al.*, 2005; Karlsson *et al.*, 2008) might be useful to gain more insight into the neural correlates of the Emotionalizing and Fantasizing sub-factors. Distinguishing neural correlates related to either the cognitive or affective alexithymia dimension is important to further disentangle alexithymia-related brain activation patterns.

Table 3 Summary of significant findings of neural correlates associated with alexithymia during negative emotion processing

Brain region	Hemisphere	k voxels	MNI coordinates			Z
			x	y	z	
View Negative > View Neutral						
Negative correlation with cognitive dimension						
Inferior parietal gyrus	L	146	-52	-30	46	4.67
Precuneus	R	160	8	-72	52	4.67
			10	-66	58	3.98
			8	-62	36	3.74
Fusiform gyrus	L	197	-30	-36	-20	4.60
			-16	-20	-12	3.84
			-20	-40	-20	3.83
Precuneus	L	144	-12	-46	64	3.94
			4	-50	64	3.66
			-28	-38	66	3.61
Negative correlation with identifying						
Superior temporal gyrus	L	94	-56	-6	0	5.30
Inferior parietal gyrus	L	338	-52	-28	48	4.72
			-50	-28	38	4.07
			-40	-48	56	3.71
Middle and inferior frontal gyrus	L	152	-34	36	18	4.70
			-44	34	22	3.77
			-44	32	30	3.70
Inferior frontal gyrus and precentral gyrus	R	140	42	10	34	4.45
			38	16	30	3.46
			56	10	40	3.24
Supramarginal gyrus and inferior parietal gyrus	R	231	52	-44	46	4.43
			56	-48	40	3.92
			54	-36	40	3.76
Parahippocampal gyrus and Cerebellum	L	261	-10	-24	-24	4.27
			-8	-34	-26	4.12
			-22	-20	-22	3.84
Middle temporal gyrus	R	97	56	-16	-10	4.20
			46	-10	-10	3.44
			60	-8	-4	3.17
Precuneus	R	149	2	-66	42	3.86
			4	-60	36	3.85
			10	-66	58	3.73
Negative correlation with verbalizing						
Precuneus and superior parietal gyrus	R	162	8	-72	52	4.77
			20	-68	56	3.74
			20	-60	62	3.64
Fusiform gyrus	L	135	-28	-36	-20	4.72
			-34	-42	-22	3.97
Postcentral gyrus	R	155	52	-20	44	3.77
			50	-28	52	3.64
			40	-26	48	3.49

L, left; R, right.

Emotion regulation

To our knowledge, this is the first fMRI study on emotion regulation and alexithymia. During reappraisal, participants activated a large part of the dorsal system, such as the left inferior frontal gyrus and the dorsal ACC, which is in accordance with previous fMRI studies on reappraisal (Diekhof *et al.*, 2011). We hypothesized that during reappraisal, activation in this dorsal system would be lower in individuals with high alexithymia scores. However, we were unable to find any alexithymia-related activation differences. This result is in accordance with a recent EEG study that also did not find any differences in brain potentials during reappraisal associated with alexithymia (Walker *et al.*, 2011). However, another study reported that low alexithymia was related to reduced P3 and slow wave potentials (Pollatos and Gramann, 2012). These divergent results might be explained by the fact that part of the regions in which decreased brain potentials were found (fusiform gyrus and inferior temporal gyrus) are not generally activated during reappraisal (Diekhof *et al.*, 2011). Furthermore, these

regions were not activated in the main effect of the current reappraisal paradigm, which might explain the lack of an association between alexithymia and these areas in the current study. The lack of alexithymia-related activation differences during reappraisal together with the fact that participants with high alexithymia scores were able to down-regulate their negative affect through reappraisal as indicated by the rating scores, suggests that individuals with alexithymia are able to use cognitive reappraisal, at least when they are explicitly trained and cued to do so.

The fMRI results of the main effect of suppression were in accordance with previous literature (Goldin *et al.*, 2008; Vanderhasselt *et al.*, 2012). In relation to alexithymia, no significant activation differences were found. This finding is in contrast with an EEG study in which lower P2, N2 and late positive potentials were found in association with cognitive alexithymia during suppression (Walker *et al.*, 2011). The discrepancy between the findings of the current study and the study of Walker and colleagues might be explained by the use of a different questionnaire (TAS-20). However, it is unlikely that this difference can fully explain the different findings, as the TAS-20 total score and BVAQ cognitive dimension are highly correlated (Vorst and Bermond, 2001). In line with the current fMRI results, no differences in rating scores after suppression were found. This indicates that individuals with higher alexithymia scores were capable of decreasing negative affect through suppression which was also found in the study of Walker *et al.* (2011). Therefore, these results indicate that individuals with alexithymia do not seem to be impaired in the use of suppression. Future research is necessary to see if this finding can be replicated.

Limitations and future implications

Some limitations of the current study should be addressed. First, we did not include depression or anxiety measures, despite the fact that correlations between these and alexithymia have been found (Berthoz *et al.*, 1999). We should note, however, that none of our subjects had a clinical psychiatric diagnosis of mood disorder or otherwise. Moreover, alexithymia was not related to positive or negative affect prior to scanning, as measured with the PANAS. Second, our results indicate neural correlates to differ already early in time during emotion processing in alexithymia. However, due to the low temporal resolution of fMRI, it is not possible to indicate that these differences already occurred very early. Therefore, we suggest that future studies combine EEG and fMRI to gain both good temporal and spatial resolution. Third, the regulation blocks in the current task were too short to calculate reliable connectivity patterns. We suggest that future research should apply tasks with longer regulation periods to examine functional connectivity patterns associated with alexithymia during emotion regulation. Furthermore, the rating scale of negative affect during the emotion regulation task might not have been sensitive enough to detect associations with alexithymia. Use of a larger scale may overcome this. Finally, the neural correlates were examined through a dimensional approach. Although some of the participants exceeded the cut-off score for clinical alexithymia [$N=12$; ≥ 53 (Deborde *et al.*, 2008)], participants were not specifically selected on this criterion and no high vs low alexithymia comparison could be made (due to low power). Therefore, future research is necessary to examine whether the intact functioning of emotion regulation areas also applies to clinical alexithymia.

CONCLUSIONS

The results of this study showed that the cognitive dimension, but not the sub-factors of the affective dimension of alexithymia, seems to affect emotion processing during the perception but not the regulation

phase. Activation was lower in a widespread emotional attention and emotional recognition brain network, probably underlying emotional attention and identification deficits in alexithymia. Activation of neural networks during the later phase of emotion regulation did not differ, which is at odds with views of alexithymia as an emotion regulation deficit. In sum, these results suggest that alexithymia may result from an early emotion processing deficit instead of deviant activation in networks subserving emotion regulation. Further research is necessary to investigate whether individuals with high alexithymia scores are also capable of regulating their emotions in daily life.

SUPPLEMENTARY DATA

Supplementary data are available at SCAN online.

REFERENCES

- Adolphs, R. (2002a). Neural systems for recognizing emotion. *Current Opinion in Neurobiology*, 12(2), 169–77.
- Adolphs, R. (2002b). Recognizing emotion from facial expressions: psychological and neurological mechanisms. *Behavioral and Cognitive Neuroscience Reviews*, 1(1), 21–62.
- Aleman, A. (2005). Feelings you can't imagine: towards a cognitive neuroscience of alexithymia. *Trends in Cognitive Sciences*, 9(12), 553–5.
- Andreasen, N.C., Flaum, M., Arndt, S. (1992). The Comprehensive Assessment of Symptoms and History (CASH). An instrument for assessing diagnosis and psychopathology. *Archives of General Psychiatry*, 49(8), 615–23.
- Aust, S., Alkan Härtwig, E., Koelsch, S., Heekeren, H., Heuser, I., Bajbouj, M. (2014). How emotional abilities modulate the influence of early life stress on hippocampal functioning. *Social Cognitive and Affective Neuroscience*, 9(7), 1038–45.
- Bagby, R.M., Quilty, L.C., Taylor, G.J., et al. (2009). Are there subtypes of alexithymia? *Personality and Individual Differences*, 47, 413–18.
- Bailey, P.E., Henry, J.D. (2007). Alexithymia, somatization and negative affect in a community sample. *Psychiatry Research*, 150(1), 13–20.
- Bekker, M.J., Bachrach, N., Croon, M.A. (2007). The relationship of antisocial behavior with attachment styles, autonomy-connectedness, and alexithymia. *Journal of Clinical Psychology*, 63(6), 507–27.
- Bermond, B., Clayton, K., Liberova, A., et al. (2007). A cognitive and an affective dimension of alexithymia in six languages and seven populations. *Cognition and Emotion*, 21(5), 1125–36.
- Bermond, B., Bierman, D.J., Cladder, M.A., Moormann, P.P., Vorst, H.M. (2010). The cognitive and affective alexithymia dimensions in the regulation of sympathetic responses. *International Journal of Psychophysiology*, 75(3), 227–33.
- Bermond, B., Vorst, H.C.M., Moormann, P. (2006). Cognitive neuropsychology of alexithymia: implications for personality typology. *Cognitive Neuropsychiatry*, 11(3), 332–60.
- Berthoz, S., Consoli, S., Perez Diaz, F., Jouvent, R. (1999). Alexithymia and anxiety: compounded relationships? A psychometric study. *European Psychiatry*, 14(7), 372–8.
- Berthoz, S., Ouhayoun, B., Perez-Diaz, F., Consoli, S.M., Jouvent, R. (2000). Comparison of the psychometric properties of two self-report questionnaires measuring alexithymia: Confirmatory factor analysis of the 20-item Toronto Alexithymia Scale and the Bermond-Vorst Alexithymia Questionnaire. *European Review of Applied Psychology*, 50(4), 359–68.
- Corbetta, M. (1998). Frontoparietal cortical networks for directing attention and the eye to visual locations: identical, independent, or overlapping neural systems? *Proceedings of the National Academy of Sciences of the United States of America*, 95(3), 831–8.
- Corbetta, M., Patel, G., Shulman, G. (2008). The reorienting system of the human brain: from environment to theory of mind. *Neuron*, 58(3), 306–24.
- Crawford, J., Henry, J. (2004). The positive and negative affect schedule (PANAS): construct validity, measurement properties and normative data in a large non-clinical sample. *British Journal of Clinical Psychology*, 43(3), 245–65.
- Deborde, A., Berthoz, S., Wallier, J.M., et al. (2008). The Bermond-Vorst Alexithymia Questionnaire cutoff scores: a study in eating-disordered and control subjects. *Psychopathology*, 41(1), 43–9.
- Diekhof, E., Geier, K., Falkai, P., Gruber, O. (2011). Fear is only as deep as the mind allows: a coordinate-based meta-analysis of neuroimaging studies on the regulation of negative affect. *Neuroimage*, 58(1), 275–85.
- Duan, X., Dai, Q., Gong, Q., Chen, H. (2010). Neural mechanism of unconscious perception of surprised facial expression. *Neuroimage*, 52(1), 401–7.
- Friston, K.J., Williams, S., Howard, R., Frackowiak, R.S., Turner, R. (1996). Movement-related effects in fMRI time-series. *Magnetic Resonance in Medicine*, 35(3), 346–55.
- Fusar-Poli, P., Placentino, A., Carletti, F., et al. (2009). Functional atlas of emotional faces processing: a voxel-based meta-analysis of 105 functional magnetic resonance imaging studies. *Journal of Psychiatry & Neuroscience: JPN*, 34(6), 418–32.
- Geenen, R., van Ooijen-van der Linden, L., Lumley, M., Bijlsma, J.W.J., van Middendorp, H. (2012). The match-mismatch model of emotion processing styles and emotion regulation strategies in fibromyalgia. *Journal of Psychosomatic Research*, 72(1), 45–50.
- Goerlich-Dobre, K.S., Bruce, L., Martens, S., Aleman, A., Hooker, C.I. (2014). Distinct associations of insula and cingulate volume with the cognitive and affective dimensions of alexithymia. *Neuropsychologia*, 53, 284–92.
- Goerlich-Dobre, K., Witteman, J., Schiller, N., van Heuven, V.J.P., Aleman, A., Martens, S. (2014). Blunted feelings: Alexithymia is associated with a diminished neural response to speech prosody. *Social Cognitive and Affective Neuroscience*, 9(8), 1108–17.
- Goerlich, K., Aleman, A., Martens, S. (2012). The sound of feelings: electrophysiological responses to emotional speech in alexithymia. *PLoS One*, 7(5), e36951.
- Goldin, P.R., McRae, K., Ramel, W., Gross, J.J. (2008). The neural bases of emotion regulation: reappraisal and suppression of negative emotion. *Biological Psychiatry*, 63(6), 577–86.
- Gross, J.J. (1998). Antecedent- and response-focused emotion regulation: divergent consequences for experience, expression, and physiology. *Journal of Personality and Social Psychology*, 74(1), 224–37.
- Gross, J.J., John, O.P. (2003). Individual differences in two emotion regulation processes: implications for affect, relationships, and well-being. *Journal of Personality and Social Psychology*, 85(2), 348–62.
- Grynberg, D., Chang, B., Corneille, O., et al. (2012). Alexithymia and the Processing of Emotional Facial Expressions (EFEs): Systematic review, unanswered questions and further perspectives. *PLoS One*, 7(8), e42429.
- Jacobs, R.H., Renken, R., Aleman, A., Cornelissen, F. (2012). The amygdala, top-down effects, and selective attention to features. *Neuroscience Biobehavioral Reviews*, 36(9), 2069–84.
- Kano, M., Fukudo, S., Gyoba, J., et al. (2003). Specific brain processing of facial expressions in people with alexithymia: An H2 15O-PET study. *Brain*, 126(6), 1474–84.
- Karlsson, H., Näätänen, P., Stenman, H. (2008). Cortical activation in alexithymia as a response to emotional stimuli. *British Journal of Psychiatry*, 192(1), 32–8.
- Kessler, H., Kammerer, M., Hoffmann, H., Traue, H. (2010). Regulation of emotions and alexithymia: a correlative study [in German]. *Psychotherapie Psychosomatik medizinische Psychologie*, 60(5), 169–74.
- Korver, N., Quee, P., Boos, H.B.M., Simons, C.J.P., de Haan, L. (2012). Genetic Risk and Outcome of Psychosis (GROUP), a multi-site longitudinal cohort study focused on gene-environment interaction: objectives, sample characteristics, recruitment and assessment methods. *International Journal of Methods in Psychiatric Research*, 21(3), 205–21.
- Kugel, H., Eichmann, M., Dannlowski, U., et al. (2008). Alexithymic features and automatic amygdala reactivity to facial emotion. *Neuroscience Letters*, 435(1), 40–4.
- Lane, R.D., Sechrest, L., Reidel, R., Weldon, V., Kaszniak, A., Schwartz, G.E. (1996). Impaired verbal and nonverbal emotion recognition in alexithymia. *Psychosomatic Medicine*, 58(3), 203–10.
- Liemberg, E.J., Vercammen, A., Ter Horst, G.J., Curcic-Blake, B., Knegeting, H., Aleman, A. (2012). Abnormal connectivity between attentional, language and auditory networks in schizophrenia. *Schizophrenia Research*, 135(1–3), 15–22.
- Mantani, T., Okamoto, Y., Shirao, N., Okada, G., Yamawaki, S. (2005). Reduced activation of posterior cingulate cortex during imagery in subjects with high degrees of alexithymia: a functional magnetic resonance imaging study. *Biological Psychiatry*, 57(9), 982–90.
- Moormann, P.P., Bermond, B., Vorst, H.C.M., Bloemendaal, A.F.T., Teijn, S.M., Rood, L. (2008). New avenues in alexithymia research: The creation of alexithymia types. In: Denollet, J., Vingerhoets, A.J.M., Nyklicek, T., editors. *Emotion Regulation: Conceptual and Clinical Issues*. New York, New York: Springer, pp. 27–42.
- Mueller, J., Alpers, G., Reim, N. (2006). Dissociation of rated emotional valence and Stroop interference in observer-rated alexithymia. *Journal of Psychosomatic Research*, 61(2), 261–9.
- Nemiah, J.C., Sifneos, P.E. (1970). Psychosomatic illness: a problem in communication. *Psychotherapy and Psychosomatics*, 18(1), 154–60.
- Ochsner, K.N., Gross, J.J. (2005). The cognitive control of emotion. *Trends in Cognitive Sciences*, 9(5), 242–9.
- Ochsner, K., Ray, R., Hughes, B., et al. (2009). Bottom-up and top-down processes in emotion generation: common and distinct neural mechanisms. *Psychological Science*, 20(11), 1322–1.
- Phan, K.L., Wager, T.D., Taylor, S.F., Liberzon, I. (2004). Functional neuroimaging studies of human emotions. *CNS spectrums*, 9(4), 258–66.
- Phillips, M., Drevets, W., Rauch, S., Lane, R. (2003). Neurobiology of emotion perception I: The neural basis of normal emotion perception. *Biological Psychiatry*, 54(5), 504–14.
- Pollatos, O., Gramann, K. (2012). Attenuated modulation of brain activity accompanies emotion regulation deficits in alexithymia. *Psychophysiology*, 49(5), 651–8.
- Pouga, L., Berthoz, S., de Gelder, B., Grzes, J. (2010). Individual differences in socioaffective skills influence the neural bases of fear processing: the case of alexithymia. *Human Brain Mapping*, 31(10), 1469–81.
- Reker, M., Ohrmann, P., Rauch, A., et al. (2010). Individual differences in alexithymia and brain response to masked emotion faces. *Cortex*, 46(5), 658–67.
- Roedema, T., Simons, R.F. (1999). Emotion-processing deficit in alexithymia. *Psychophysiology*, 36(3), 379–87.
- Sifneos, P.E. (1973). The prevalence of 'alexithymic' characteristics in psychosomatic patients. *Psychotherapy and Psychosomatics*, 22(2), 255–62.

- Stasiewicz, P., Bradizza, C., Gudleski, G., et al. (2012). The relationship of alexithymia to emotional dysregulation within an alcohol dependent treatment sample. *Addictive Behaviors*, 37(4), 469–76.
- Suslow, T., Kersting, A., Arolt, V. (2003). Alexithymia and incidental learning of emotional words. *Psychological Reports*, 93(3), 1003–12.
- Swart, M., Bruggeman, R., Laroi, F., et al. (2011). COMT Val158Met polymorphism, verbalizing of emotion and activation of affective brain systems. *Neuroimage*, 55(1), 338–44.
- Swart, M., Kortekaas, R., Aleman, A. (2009). Dealing with feelings: characterization of trait alexithymia on emotion regulation strategies and cognitive-emotional processing. *PLoS One*, 4(6), e5751.
- Taylor, G.J., Bagby, R.M., Parker, J.D. (1997). *Disorders of Affect Regulation: Alexithymia in Medical and Psychiatric Illness*. Cambridge: Cambridge University Press.
- Taylor, G., Bagby, R.M. (2004). New trends in alexithymia research. *Psychotherapy and Psychosomatics*, 73(2), 68–77.
- Van der Meer, L., Van't Wout, M., Aleman, A. (2009). Emotion regulation strategies in patients with schizophrenia. *Psychiatry Research*, 170(2–3), 108–13.
- van der Velde, J., Servaas, M., Goerlich, K., et al. (2013). Neural correlates of alexithymia: A meta-analysis of emotion processing studies. *Neuroscience Biobehavioral Reviews*, 37(8), 1774–85.
- Vanderhasselt, M., Kühn, S., De Raedt, R. (2012). 'Put on your poker face': neural systems supporting the anticipation for expressive suppression and cognitive reappraisal. *Social Cognitive and Affective Neuroscience*, 8(8), 903–10.
- Vorst, H.C., Bermond, B. (2001). Validity and reliability of the Bermond-Vorst Alexithymia Questionnaire. *Personality and Individual Differences*, 30, 413–34.
- Vuilleumier, P. (2005). How brains beware: neural mechanisms of emotional attention. *Trends in Cognitive Sciences*, 9(12), 585–94.
- Walker, S., O'Connor, D., Schaefer, A. (2011). Brain potentials to emotional pictures are modulated by alexithymia during emotion regulation. *Cognitive, Affective Behavioral Neuroscience*, 11(4), 463–75.
- Watson, D., Clark, L.A., Tellegen, A. (1988). Development and validation of brief measures of positive and negative affect: The PANAS scales. *Journal of Personality and Social Psychology*, 54(6), 1063–70.
- Weiss, E., Schuster, G., Freudenthaler, H.H., Hofer, E., Pichler, N., Papousek, I. (2012). Potential markers of aggressive behavior: The fear of other persons' laughter and its overlaps with mental disorders. *PLoS One*, 7(5), e38088.
- Wing, J.K., Babor, T., Brugha, T., et al. (1990). SCAN. Schedules for Clinical Assessment in Neuropsychiatry. *Archives of General Psychiatry*, 47(6), 589–93.
- Wingbermhühle, E., Theunissen, H., Verhoeven, W.M.A., Kessels, R.P.C., Egger, J.I.M. (2012). The neurocognition of alexithymia: evidence from neuropsychological and neuroimaging studies. *Acta Neuropsychiatrica*, 24(2), 67–80.
- Wingenfeld, K., Riedesel, K., Petrovic, Z., et al. (2011). Impact of childhood trauma, alexithymia, dissociation, and emotion suppression on emotional Stroop task. *Journal of Psychosomatic Research*, 70(1), 53–8.
- Zech, E., Luminet, O., Rimé, B., Wagner, H. (1999). Alexithymia and its measurement: confirmatory factor analyses of the 20-item Toronto Alexithymia Scale and the Bermond-Vorst Alexithymia Questionnaire. *European Journal of Personality*, 13(6), 511–32.