

University of Groningen

Near-Infrared Fluorescence Laparoscopy of the Cystic Duct and Artery in Pigs

Schols, Rutger M.; Lodewick, Toine M.; Bouvy, Nicole D.; van Dam, Dieuwertje A.; Meijerink, Wilhelmus J. H. J.; van Dam, Gooitzen; Dejong, Cornelis H. C.; Stassen, Laurents P. S.

Published in:
Journal of laparoendoscopic & advanced surgical techniques

DOI:
[10.1089/lap.2013.0590](https://doi.org/10.1089/lap.2013.0590)

IMPORTANT NOTE: You are advised to consult the publisher's version (publisher's PDF) if you wish to cite from it. Please check the document version below.

Document Version
Publisher's PDF, also known as Version of record

Publication date:
2014

[Link to publication in University of Groningen/UMCG research database](#)

Citation for published version (APA):

Schols, R. M., Lodewick, T. M., Bouvy, N. D., van Dam, D. A., Meijerink, W. J. H. J., van Dam, G. M., ... Stassen, L. P. S. (2014). Near-Infrared Fluorescence Laparoscopy of the Cystic Duct and Artery in Pigs: Performance of a Preclinical Dye. *Journal of laparoendoscopic & advanced surgical techniques*, 24(5), 318-322. DOI: 10.1089/lap.2013.0590

Copyright

Other than for strictly personal use, it is not permitted to download or to forward/distribute the text or part of it without the consent of the author(s) and/or copyright holder(s), unless the work is under an open content license (like Creative Commons).

Take-down policy

If you believe that this document breaches copyright please contact us providing details, and we will remove access to the work immediately and investigate your claim.

Downloaded from the University of Groningen/UMCG research database (Pure): <http://www.rug.nl/research/portal>. For technical reasons the number of authors shown on this cover page is limited to 10 maximum.

Near-Infrared Fluorescence Laparoscopy of the Cystic Duct and Artery in Pigs: Performance of a Preclinical Dye

Rutger M. Schols, MD,^{1,2,*} Toine M. Lodewick, MD,^{1-3,*} Nicole D. Bouvy, MD, PhD,^{1,2}
Dieuwertje A. van Dam, MD,⁴ Wilhelmus J.H.J. Meijerink, MD, PhD,⁴ Gooitzen M. van Dam, MD, PhD,⁵
Cornelis H.C. Dejong, MD, PhD,^{1,2} and Laurents P.S. Stassen, MD, PhD^{1,2}

Abstract

Background: Near-infrared fluorescence laparoscopy after intravenous indocyanine green (ICG) administration has been proposed as a promising surgical imaging technique for real-time visualization of the extrahepatic bile ducts and arteries in clinical laparoscopic cholecystectomies. However, optimization of this new technique with respect to the imaging system combined with the fluorophore is desirable. The performance of a preclinical near-infrared dye, CW800-CA, was compared with that of ICG for near-infrared fluorescence laparoscopy of the cystic duct and artery in pigs.

Materials and Methods: Laparoscopic cholecystectomy was performed in six pigs (average weight, 35 kg) using a commercially available laparoscopic fluorescence imaging system. The fluorophores CW800-CA and ICG (both 800 nm fluorescent dyes) were administered by intravenous injection in four and two pigs, respectively. CW800-CA was administered in three different doses (consecutively 0.25, 1, and 3 mg); ICG was intravenously injected (2.5 mg) for comparison. Intraoperative recognition of the biliary structures was recorded at set time points. The target-to-background ratio was determined to quantify the fluorescence signal of the designated tissues.

Results: A clinically proven dose of 2.5 mg of ICG resulted in a successful fluorescence delineation of both the cystic duct and artery. In the CW800-CA-injected pigs a clear visualization of the cystic duct and artery was obtained after administration of 3 mg of CW800-CA. Time from injection until fluorescence identification of the cystic duct was reduced when CW800-CA was used compared with ICG (11.5 minutes versus 21.5 minutes, respectively). CW800-CA provided clearer illumination of the cystic artery, in terms of target-to-background ratio.

Conclusions: As well as ICG, CW800-CA can be applied for fluorescence identification of the cystic artery and duct using a commercially available laparoscopic fluorescence imaging system. Fluorescence cholangiography of the cystic duct can be obtained earlier after intravenous injection of CW800-CA, compared with ICG. These findings increase the possibilities of use and of optimization of this imaging technique.

Introduction

IN PATIENTS WITH SYMPTOMATIC cholelithiasis and/or cholecystitis, laparoscopic cholecystectomy is currently the standard of care in most Western countries. Although an

incidence of only 0.7% is reported for bile duct injury during laparoscopic cholecystectomy, it constitutes a severe complication that may result in increased long-term morbidity and, as a consequence, increased costs. Furthermore, it may negatively affect the quality of life of patients.¹⁻³

¹Department of Surgery, Maastricht University Medical Center, Maastricht, The Netherlands.

²NUTRIM School for Nutrition, Toxicology, and Metabolism, Maastricht University, Maastricht, The Netherlands.

³Department of General, Visceral, and Transplant Surgery, University Hospital RWTH Aachen, Aachen, Germany.

⁴Department of Surgery, Gastro-Intestinal Surgery, and Advanced Laparoscopy, VU Medical Center, Amsterdam, The Netherlands.

⁵Department of Surgery, Division of Surgical Oncology, BioOptical Imaging Center, University of Groningen, Groningen, The Netherlands.

*The first two authors contributed equally to the manuscript.

The results of this study were presented during the 26th National Symposium for Experimental Research of Surgical Specialties, held November 22, 2013, in Maastricht, The Netherlands.

Near-infrared fluorescence imaging after intravenous indocyanine green (ICG) administration is an innovative and promising laparoscopic imaging method for intraoperative visualization of crucial anatomical structures.⁴ Several clinical pilot studies have demonstrated its usefulness and feasibility for real-time intraoperative identification of extrahepatic bile ducts and arteries to assist in safe and time-efficient gallbladder removal. However, this new technique needs optimization with respect to imaging systems and injected fluorophores.

CW800-CA is a relatively new fluorophore, which like ICG also has 800 nm fluorescent capabilities. It has not yet been cleared by the U.S. Food and Drug Administration for clinical use but has a low risk of toxicity equal to that of ICG and incorporates favorable characteristics for fluorescence imaging of vital anatomy.^{5,6} The most advantageous characteristic of CW800-CA is its increased hydrophilicity, resulting in improved secretion into bile and earlier fluorescence illumination of the bile ducts.^{5,6}

This study was conducted to assess the performance of CW800-CA versus the clinically already available ICG for near-infrared fluorescence laparoscopy of the cystic duct and cystic artery in pigs using a commercially available laparoscopic fluorescence imaging system.

Materials and Methods

This study was conducted at the central animal facilities of Maastricht University (Maastricht, The Netherlands). Animals were used in compliance with the regulations of the Dutch legislation for animal research, and the study protocol was approved by the Animal Ethics Committee of Maastricht University (project number 2012-098). A pig model was chosen because of its similarity with human anatomy. Six female Dutch Landrace pigs, weighing an average of 35 kg, were used for the current study.

Laparoscopic fluorescence imaging system

A commercially available laparoscopic fluorescence imaging system (Karl Storz GmbH & Co. KG, Tuttlingen, Germany) was used. The system includes a plasma light guide and 30° 10-mm laparoscope applicable for both white light and near-infrared fluorescence imaging. A foot pedal allows the surgeon to easily switch back and forth from conventional imaging to fluorescence imaging. Procedures were digitally recorded.

Preparation of near-infrared fluorophore

In these animal experiments, the system, which was primarily developed for ICG imaging, was now also tested for its feasibility for real-time intraoperative fluorescence visualization of biliary anatomy (cystic duct and cystic artery) after intravenous administration of the preclinical fluorescent dye CW800-CA (a carboxylate of the near-infrared fluorophore IRDye® 800CW [LI-COR Biosciences, Lincoln, NE]). CW800-CA was diluted in a sterile phosphate-buffered saline (PBS) solution.

Surgical technique

Premedication comprised intramuscular injection of azaperone (3 mg/kg), ketamine (10 mg/kg), and atropine (0.05 mg/kg). Anesthesia was induced with intravenous administration of thiopental (10–15 mg/kg), followed by intubation, and maintained with the animal under anesthesia with isoflurane (depending on effect) and oxygen (20–40 mL/kg/minute). Thereafter a laparoscopy was performed.

In each pig a laparoscopic cholecystectomy was performed, according to the Dutch Guidelines and best practice for laparoscopic cholecystectomy,⁷ which is based on the Critical View of Safety technique.

One experiment per animal was conducted. In the first two pigs, 1 mL of ICG (2.5 mg/mL of Infracyanine®; SERB, Paris, France) was injected intravenously. This dose has proven sufficient for clinical use.⁸ For the third experiment (pig number 3), 5 mg of CW800-CA was diluted in 20 mL of PBS solution (0.25 mg/mL). One milliliter of this solution (0.25 mg) was intravenously administered. For the subsequent three experiments, 5 mg of CW800-CA was diluted in 5 mL of PBS solution (1 mg/mL). Next, 1 mL (1.0 mg) of the solution was injected in pig number 4. Three milliliters (3.0 mg) of the solution was administered in pigs numbers 5 and 6.

Fluorescence imaging was obtained directly after dye injection and subsequently every 5–10 minutes. Intraoperatively the researcher systematically recorded on a form whether the localization of cystic duct or cystic artery could be identified at set time points, comparing the WL camera mode with the ICG mode. For agreement on the identification of the aforementioned structures, the attending surgeon was consulted. A structure was scored as “identified” if its localization was confirmed with great certainty by the experienced surgeon. An overview of the six experiments is presented in Table 1.

TABLE 1. OVERVIEW OF EXPERIMENTAL RESULTS

Experiment (pig number)	Injected dye	Concentration of administered dye (mg/mL)	Amount of dye injected (mL)	Visualization of cystic artery?	Visualization of cystic duct?	Time to identification of cystic duct (minutes)
1	ICG	2.5	1.0	Yes	Yes	20
2	ICG	2.5	1.0	Yes	Yes	22
3	CW800-CA	0.25	1.0	No	No	—
4	CW800-CA	1.0	1.0	No	No	—
5	CW800-CA	1.0	3.0	Yes	Yes	11
6	CW800-CA	1.0	3.0	Yes	Yes	12

ICG, indocyanine green.

Quantitative fluorescence image analysis

For objective assessment of the degree of fluorescence illumination in the extrahepatic bile ducts and artery, OsiriX version 5.5.1 imaging (open source) software was used. The fluorescence images were analyzed by determining target-to-background ratio (TBR). TBR was defined as the mean fluorescence intensity (FI) (in arbitrary units) of three point regions of interest in the target (i.e., cystic duct or cystic artery) minus the mean FI of three background regions of interest in the liver hilum, divided by the mean FI of the three background regions of interest in the liver hilum, according to the following equation:

$$\text{TBR} = (\text{FI of target} - \text{FI of background}) / \text{FI of background}$$

Results

In the first two experiments ICG fluorescence laparoscopy for identification of the cystic artery (Fig. 1B) and cystic duct (Fig. 2B) was successfully conducted. The CW800-CA dosage in experiments 3 (0.25 mg) and 4 (1.0 mg) was insufficient to obtain fluorescence delineation of these structures. Using a dose of 3 mg of CW800-CA in the last two experiments led to clear visualization of the cystic artery (Fig. 1D) and cystic duct (Fig. 2D) in both pigs. Observations of the six experiments are summarized in Table 1.

TBR

The TBR values of the cystic artery versus gallbladder and the cystic artery versus liver parenchyma in the arterial phase after ICG injection were -0.6 and 0.5 , respectively (pig 2, ± 30 seconds after dye administration [Fig. 1B]). These data confirm the inability of ICG-based imaging to identify the cystic artery when positioned directly on the liver parenchyma. After injection of CW800-CA, the TBR values of the cystic artery versus gallbladder and the cystic artery versus liver parenchyma were 1.1 and 1.7 (± 30 seconds after dye administration [Fig. 1D]). This indicates a clear recognition of the cystic artery when positioned above liver parenchyma and the gallbladder if CW800-CA is used. The TBR values of the cystic duct versus liver parenchyma were 3.2 for ICG (Fig. 2B) and 2.3 for CW800-CA (Fig. 2D).

Complications

No peri- or postoperative complications regarding the extrahepatic bile ducts occurred. None of the pigs developed any adverse reactions to the injected ICG or CW800-CA. No interference with intraoperative monitoring of the saturation of peripheral oxygen was observed.

Discussion

In the present study the feasibility of fluorescence imaging of the cystic duct and artery using CW800-CA and a commercially available laparoscopic fluorescence imaging system was investigated. To assess the performance of this preclinical contrast agent, ICG was used for comparison. CW800-CA provided comparable visualization of the course of the cystic duct and better identification of the cystic artery.

With respect to the fluorophores investigated in this study, it is important to address the following characteristics. ICG is a disulfonated heptamethine indocyanine that is Food and Drug Administration–approved for clinical use. After intravenous injection, it is rapidly cleared from the blood by the liver and transported into the bile. Consequently, intravenously injected ICG is applicable for cholangiography. CW800-CA is a carboxylate of IRDye 800CW, a tetrasulfonated heptamethine indocyanine. Emission of this dye is quite similar to that of ICG (also at 800 nm). However, after intravenous injection, it is rapidly cleared not only by the liver and excreted into bile, but also by the kidneys and excreted into the urine. As a result this dye is usable for imaging of the biliary anatomy and of the ureters.⁹

Previously Tanaka et al.⁵ tested ICG and CW800-CA for bile duct imaging in rats and pigs during open surgery. CW800-CA proved to be more selective, as ICG suffered from lack of efficient secretion into bile from the liver. In addition, CW800-CA was excreted into bile in a predominantly unmetabolized form, which increases the rapidity and signal intensity by which images can be obtained after administration.

In the present study, the CW800-CA dosage in the first experiment was based on the report by Tanaka et al.⁵ A dose of $7.5 \mu\text{g}/\text{kg}$ of body weight appeared not sufficient for laparoscopic fluorescence detection of the cystic duct and artery. With a significantly higher dose ($85 \mu\text{g}/\text{kg}$) of the injected dye, clear visualization of the course of the cystic duct and artery was obtained in this study.

Furthermore, from this study it was noted that time from injection until fluorescence identification of the cystic duct was reduced when CW800-CA was used compared with ICG (11.5 minutes versus 21.5 minutes, respectively). Based on TBR values, this study demonstrates the ability of identifying the cystic duct after injection of both fluorophores. Regarding arterial fluorescence imaging, background signal (i.e., dye uptake by the liver parenchyma) was larger when ICG was used, compared with CW800-CA. Therefore recognition of the cystic artery might be easier with CW800-CA.

Besides laparoscopic cholecystectomy, fluorescence imaging of crucial biliary structures might be beneficial in other (laparoscopic) hepatopancreatobiliary surgical procedures as well. Possible applications of this technique during hepatopancreatobiliary surgery include tumor detection in liver and pancreas resections and real-time imaging of intra- and extrahepatic bile ducts (and branches) of hepatic, cystic, pancreatic, gastroduodenal, and pancreatoduodenal arteries.^{10–12}

Moreover, fluorescence imaging could be performed to detect bile leakage during open and laparoscopic partial liver resections. This complication after hepatectomy occurs in approximately 8% of all patients undergoing partial liver resection and is associated with greater postoperative mortality and healthcare costs.¹³ Prevention of bile leakage after hepatectomy therefore deserves attention. In a randomized clinical trial that evaluated the use of ICG fluorescence cholangiography to prevent postoperative bile leakage after hepatic resections, the ability to detect leaking bile duct stumps at the cut surface of the remnant liver, which were missed by conventional bile leak tests, was demonstrated.¹⁴ Given its pharmacokinetics, CW800-CA might prove to be even more suitable for the detection of bile leakage.

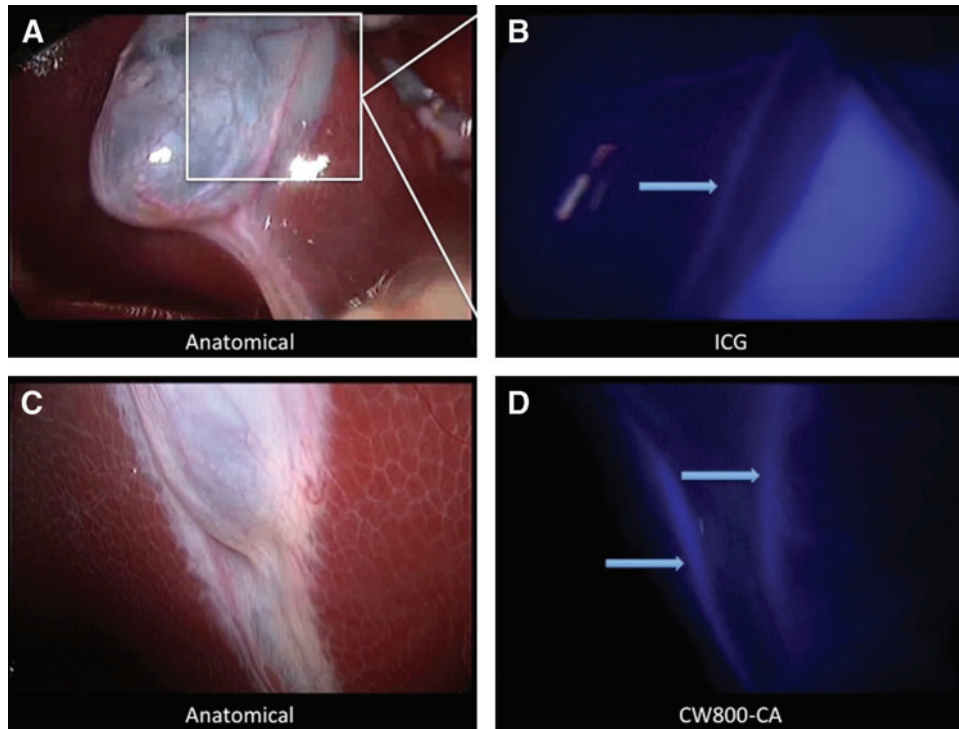


FIG. 1. Cystic artery imaging. (A and B) Snapshots taken during indocyanine green (ICG) fluorescence laparoscopy experiments in pig 1. (A) The anatomical view of the gallbladder and liver hilum. (B) The associated ICG fluorescence image of the cystic artery (the cystic artery is indicated by the arrow). The target-to-background ratio is 0.5. (C and D) Fluorescence angiography using CW800-CA in pig 5: the anatomical view and the associated fluorescence delineation, respectively, of the cystic artery (the cystic artery is indicated by the arrows). The target-to-background ratio is 1.7.

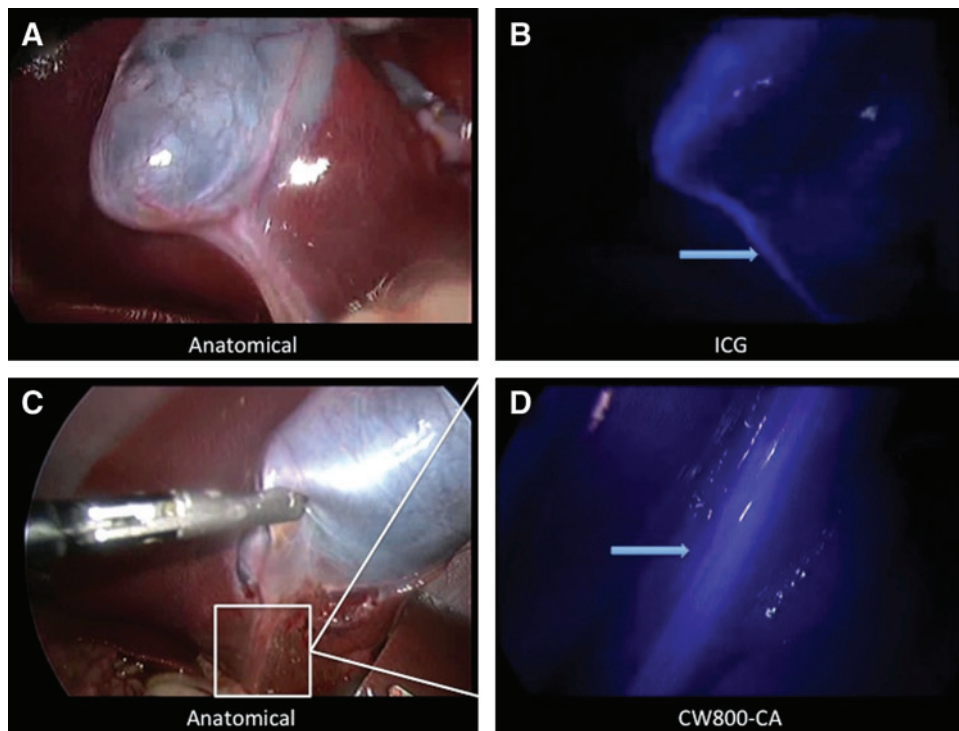


FIG. 2. Cystic duct delineation. (A and B) Snapshots taken during indocyanine green (ICG) fluorescence laparoscopy experiments in pig 1. (A) The anatomical view of the gallbladder and liver hilum. (B) The associated fluorescence cholangiogram of the gallbladder and cystic duct (the cystic duct is indicated by the arrow). The target-to-background ratio is 3.2. (C and D) Result of CW800-CA fluorescence laparoscopy in pig 5: the anatomical view and the associated fluorescence delineation, respectively, of the cystic duct (the cystic duct is indicated by the arrow). The target-to-background ratio is 2.3.

Although this report only describes a small experimental animal study and a large difference in dosage of CW800-CA, the concept of fluorescence visualization of the cystic duct and artery using CW800-CA has successfully been demonstrated using a commercially available laparoscopic fluorescence imaging system. A clinical pilot study investigating the feasibility of near-infrared fluorescence imaging using CW800-CA in laparoscopic cholecystectomy is the next step. Such a pilot study should focus on dose-finding of the administered dye, as even a lower dose than 3 mg/mL (used in experiments 5 and 6) might be sufficient.

Conclusions

As well as ICG, CW800-CA can be applied for laparoscopic fluorescence identification of the cystic artery and duct using a commercially available imaging system. Laparoscopic fluorescence cholangiography of the cystic duct can be obtained earlier after intravenous injection of CW800-CA, compared with ICG. With the availability of two instead of one fluorophore, the possibilities increase to further optimize the imaging capabilities of the presently available fluorescence systems. A dose-finding and clinical feasibility study for CW800-CA is the next step.

Acknowledgments

The authors thank Karl Storz GmbH & Co. KG (Tuttlingen, Germany) for technical services and providing the laparoscopic fluorescence imaging system for animal experiments and the staff of the animal facilities of Maastricht University for their assistance in performing the animal experiments.

Disclosure Statement

No competing financial interests exist.

References

- Landman MP, Feurer ID, Moore DE, Zaydfudim V, Pinson CW. The long-term effect of bile duct injuries on health-related quality of life: A meta-analysis. *HPB (Oxford)* 2013; 15:252–259.
- Roy PG, Soonawalla ZF, Grant HW. Medicolegal costs of bile duct injuries incurred during laparoscopic cholecystectomy. *HPB (Oxford)* 2009;11:130–134.
- Walsh RM, Henderson JM, Vogt DP, Brown N. Long-term outcome of biliary reconstruction for bile duct injuries from laparoscopic cholecystectomies. *Surgery* 2007;142:450–456; discussion 456–457.
- Schols RM, Bouvy ND, van Dam RM, Stassen LP. Advanced intraoperative imaging methods for laparoscopic anatomy navigation: An overview. *Surg Endosc* 2013;27: 1851–1859.
- Tanaka E, Choi HS, Humblet V, Ohnishi S, Laurence RG, Frangioni JV. Real-time intraoperative assessment of the extrahepatic bile ducts in rats and pigs using invisible near-infrared fluorescent light. *Surgery* 2008;144:39–48.
- Tanaka E, Ohnishi S, Laurence RG, Choi HS, Humblet V, Frangioni JV. Real-time intraoperative ureteral guidance using invisible near-infrared fluorescence. *J Urol* 2007; 178:2197–2202.
- Lange JF, Stassen LPS. Best practice in verband met de techniek van laparoscopische cholecystectomie (Critical View of Safety [CVS] in 7 stappen). Werkgroep Endoscopische Chirurgie van de Nederlandse vereniging voor Heelkunde. 2006. www.wheelkundenl/uploads/_6/re/_6reZZkgrYUAuCG6uvcN-A/richtlijn_galsteenpdf (accessed October 14, 2013).
- Schols RM, Bouvy ND, van Dam RM, Masclee AA, Dejong CH, Stassen LP. Combined vascular and biliary fluorescence imaging in laparoscopic cholecystectomy. *Surg Endosc* 2013;27:4511–4517.
- Frangioni JV, Tanaka E, Borud LJ. Intraoperative imaging methods. Patent Cooperation Treaty WO/2008/076467. <http://patentscopewipoint/search/en/WO2008076467> (accessed September 12, 2013).
- Verbeek FP, van der Vorst JR, Schaafsma BE, Hutteman M, Bonsing BA, van Leeuwen FW, Frangioni JV, van de Velde CJ, Swijnenburg RJ, Vahrmeijer AL. Image-guided hepatopancreatobiliary surgery using near-infrared fluorescent light. *J Hepatobiliary Pancreat Sci* 2012;19:626–637.
- Aoki T, Murakami M, Yasuda D, Shimizu Y, Kusano T, Matsuda K, Niiya T, Kato H, Murai N, Otsuka K, Kusano M, Kato T. Intraoperative fluorescent imaging using indocyanine green for liver mapping and cholangiography. *J Hepatobiliary Pancreat Sci* 2010;17:590–594.
- Mitsuhashi N, Kimura F, Shimizu H, Imamaki M, Yoshidome H, Ohtsuka M, Kato A, Yoshitomi H, Nozawa S, Furukawa K, Takeuchi D, Takayashiki T, Suda K, Igarashi T, Miyazaki M. Usefulness of intraoperative fluorescence imaging to evaluate local anatomy in hepatobiliary surgery. *J Hepatobiliary Pancreat Surg* 2008;15:508–514.
- Guillaud A, Pery C, Campillo B, Lourdaïs A, Sulpice L, Boudjema K. Incidence and predictive factors of clinically relevant bile leakage in the modern era of liver resections. *HPB (Oxford)* 2013;15:224–229.
- Kaibori M, Ishizaki M, Matsui K, Kwon AH. Intraoperative indocyanine green fluorescent imaging for prevention of bile leakage after hepatic resection. *Surgery* 2011;150:91–98.

Address correspondence to:
Rutger M. Schols, MD
Department of Surgery
Maastricht University Medical Center
P. Debye laan 25
6229 HX Maastricht
The Netherlands

E-mail: rutgermschols@hotmail.com