

University of Groningen

Long-term health outcomes and cost-effectiveness of a computer-tailored physical activity intervention among people aged over fifty

Peels, Denise A.; Hoogenveen, Rudolf R.; Feenstra, Talitha L; Golsteijn, Rianne H. J.; Bolman, Catherine; Mudde, Aart N.; Wendel-Vos, Gerrie C. W.; de Vries, Hein; Lechner, Lilian

Published in:
BMC Public Health

DOI:
[10.1186/1471-2458-14-1099](https://doi.org/10.1186/1471-2458-14-1099)

IMPORTANT NOTE: You are advised to consult the publisher's version (publisher's PDF) if you wish to cite from it. Please check the document version below.

Document Version
Publisher's PDF, also known as Version of record

Publication date:
2014

[Link to publication in University of Groningen/UMCG research database](#)

Citation for published version (APA):

Peels, D. A., Hoogenveen, R. R., Feenstra, T. L., Golsteijn, R. H. J., Bolman, C., Mudde, A. N., ... Lechner, L. (2014). Long-term health outcomes and cost-effectiveness of a computer-tailored physical activity intervention among people aged over fifty: modelling the results of a randomized controlled trial. *BMC Public Health*, 14, [1099]. DOI: 10.1186/1471-2458-14-1099

Copyright

Other than for strictly personal use, it is not permitted to download or to forward/distribute the text or part of it without the consent of the author(s) and/or copyright holder(s), unless the work is under an open content license (like Creative Commons).

Take-down policy

If you believe that this document breaches copyright please contact us providing details, and we will remove access to the work immediately and investigate your claim.

Downloaded from the University of Groningen/UMCG research database (Pure): <http://www.rug.nl/research/portal>. For technical reasons the number of authors shown on this cover page is limited to 10 maximum.

RESEARCH ARTICLE

Open Access

Long-term health outcomes and cost-effectiveness of a computer-tailored physical activity intervention among people aged over fifty: modelling the results of a randomized controlled trial

Denise A Peels^{1*}, Rudolf R Hoogenveen², Talitha L Feenstra^{2,5}, Rianne HJ Golsteijn¹, Catherine Bolman¹, Aart N Mudde¹, Gerrie CW Wendel-Vos², Hein de Vries^{3,4} and Lilian Lechner¹

Abstract

Background: Physical inactivity is a significant predictor of several chronic diseases, becoming more prevalent as people age. Since the aging population increases demands on healthcare budgets, effectively stimulating physical activity (PA) against acceptable costs is of major relevance. This study provides insight into long-term health outcomes and cost-effectiveness of a tailored PA intervention among adults aged over fifty.

Methods: Intervention participants ($N = 1729$) received tailored advice three times within four months, targeting the psychosocial determinants of PA. The intervention was delivered in different conditions (i.e. print-delivered versus Web-based, and with or without additional information on local PA opportunities). In a clustered RCT, the effects of the different intervention conditions were compared to each other and to a control group. Effects on weekly Metabolic Equivalents (MET)-hours of PA obtained one year after the intervention started were extrapolated to long-term outcomes (5-year, 10-year and lifetime horizons) in terms of health effects and quality-adjusted life years (QALYs) and its effect on healthcare costs, using a computer simulation model. Combining the model outcomes with intervention cost estimates, this study provides insight into the long-term cost-effectiveness of the intervention. Incremental cost-effectiveness ratios (ICERs) were calculated.

Results: For all extrapolated time horizons, the printed and the Web-based intervention resulted in decreased incidence numbers for diabetes, colon cancer, breast cancer, acute myocardial infarctions, and stroke and increased QALYs as a result of increased PA. Considering a societal Willingness-to-Pay of €20,000/QALY, on a lifetime horizon the printed (ICER = €7,500/QALY) as well as the Web-based interventions (ICER = €10,100/QALY) were cost-effective. On a 5-year time horizon, the Web-based intervention was preferred over the printed intervention. On a 10-year and lifetime horizon, the printed intervention was the preferred intervention condition, since the monetary savings of the Web-based intervention did no longer outweigh its lower effects. Adding environmental information resulted in a lower cost-effectiveness.

Conclusion: A tailored PA intervention in a printed delivery mode, without environmental information, has the most potential for being cost-effective in adults aged over 50.

Trial registration: The current study was registered at the Dutch Trial Register (NTR2297; April 26th 2010).

Keywords: Cost-effectiveness, Modelling, Quality of life, Disease incidence, Physical activity, Tailored intervention, Print-delivered, Web-based

* Correspondence: denise.peels@ou.nl

¹Department of Psychology and Educational Sciences, Open University of the Netherlands, PO Box 2960, 6401 DL Heerlen, The Netherlands
Full list of author information is available at the end of the article

Background

Physical inactivity is identified as the fourth leading risk factor for global mortality and a significant predictor of several chronic diseases [1-3]. The adverse health effects of insufficient physical activity (PA) result in high costs to society [4]. Oldridge [5] estimated that a lack of PA contributes to between 1.5% and 3.0% of direct healthcare costs in developed countries. Colman and Walker [6] estimated that in a population of 10 million people, where half of the population is too inactive to enjoy health benefits from PA, the costs of insufficient PA can be up to €910 million a year [6]. The loss of health due to insufficient PA and its economic impact on society emphasizes the importance of stimulating people to become more physically active, which can result in better public health and thereby reduce health care costs [7-9].

Older people especially face physical disabilities more often, resulting in substantial (perceived) barriers to PA. Moreover, particularly among this group physical inactivity is associated with greater risk of serious health problems [1,10]. Since the aging population places increasing demands on healthcare budgets [11,12], effectively stimulating PA with interventions against acceptable costs among older adults is of major relevance. Research has shown that even modest increases in PA produce substantial health benefits and decreased mortality [13], and that improvements in PA result in savings in health care costs, even within a year [14].

Computer-tailoring is a potentially cost-effective strategy for promoting PA behavior [14-16], as it provides the opportunity to give an individual advice to large populations with minimal costs. Several studies have shown that interventions aimed at personal characteristics of participants and interventions using behavioral change strategies (as applied in most tailoring interventions) are most effective in stimulating PA [15]. As a consequence, the theory- and evidence-based computer-tailored Active Plus intervention was developed [17,18]. Tailored advice was delivered to participants on three occasions within a four-month period [17]. The intervention was available in different versions: (1) basic print-delivered, targeting psychosocial determinants; (2) environmental print-delivered, targeting environmental determinants in addition to the basic intervention; (3) basic Web-based; and (4) environmental Web-based, with identical content as the environmental print-delivered version [18].

Since there is a high need for cost-effective interventions to reduce healthcare costs within the aging population, the main research question for the current study is: 'What are the long-term health outcomes and cost-effectiveness of the different versions of the computer-tailored physical activity Active Plus intervention among people aged over fifty?'. Whereas a previous study provided insight into the efficacy of the intervention on PA

one year after the intervention started [16], for the current study modelling analyses were performed to provide insight into the intervention's health effects, which often become more visible when follow-up time increases, mostly beyond the trial period. Using the Chronic Disease Model [19], effects on PA were extrapolated beyond the trial's time horizon, providing insight into reduction in disease incidences and consequent effects on health-related quality of life and mortality over time, as a result of increased PA. Combining the model outcomes with intervention cost estimates, this study also provides insight into long-term cost-effectiveness of the intervention expressed in costs per quality adjusted life year (QALY). The measure of costs per QALY gained (instead of only effects on PA) enables policy makers to prioritize between different interventions (e.g. comparing cost-effectiveness of a quit-smoking intervention versus a PA intervention).

To our knowledge no other studies have been performed on long-term (i.e. lifetime) cost-effectiveness of computer-tailored PA interventions among older adults. As tailored intervention have the potential to be cost-effective, and reach large populations against minimal cost, even among older adults [20], more insight in its long-term cost-effectiveness is highly needed. Proving the long-term cost-effectiveness of computer-tailored interventions to stimulate PA among older adults, might stimulate the large-scale implementation of these interventions, and thereby prevent the loss of health and lower the impact of the aging population on health care costs.

Methods

Design

Four different intervention-versions and a waiting-list control group (who did not receive the intervention until the study was ended) were studied using a clustered RCT with evaluation assessments at the start, after three, six and 12 months. Results on self-reported PA after 12 months were extrapolated to long-term outcomes (i.e. 5-year, 10-year, and lifetime horizon) using the Chronic Disease Model. The current study was registered at the Dutch Trial Register (NTR2297) and approved by the Medical Ethics Committee of Atrium-Orbis-Zuyd (MEC10-N-36).

Participants and procedures

Participants were recruited via direct mailing in communities of the Municipal Health Council (MHC) regions participating in this study (2010-2011) [21]. Communities were matched on their urbanity, percentage of people with a low SES, percentage of people with a high SES, percentage of immigrants, and the percentage of people aged over 50. Each MHC provided a random sample of eligible participants. Using a random number generator, regions were randomly assigned to one of five research arms. Participants had to be aged over 50 (no maximum age), and

needed a sufficient understanding of the Dutch language. No other in- or exclusion criteria were set.

A power calculation (effect size = 0.4, power = 80%, intracluster-correlation coefficient = 0.1) showed that at baseline 420 participants were needed per intervention condition (considering a dropout rate of 40% during the 1-year follow-up based on a previous Active Plus study) [21]. Figure 1 provides an overview of the participant numbers included at baseline and 12-months assessment. To reach an equal number of participants per intervention condition, a higher number of invitations had to be distributed in the online intervention regions. Participants provided informed consent before enrolment.

The Chronic Disease Model

The Chronic Disease Model is a population-based, Markov-type state-transition model that forecasts the development over time in demographics, prevalence of risk factors, disease incidences, and mortality [19]. Markov-type state-transition models are often used to estimate the health effects of PA behaviour [22-24]. The Chronic Disease Model describes the changes in physical (in)activity over time (e.g. the model projects a decrease in PA behavior (i.e. an increased risk of less PA) over time as a result of an increase in age) and the resulting changes of morbidity and mortality for several PA-related chronic diseases (i.e. diabetes, colon cancer, breast cancer, acute myocardial infarctions, stroke) in the Dutch population. The Chronic Disease Model has been described extensively by Hoogenveen and colleagues [19]. The model is based on data provided by national studies with regard to the risk factor distribution and transition, and on data from regional and national registries and registries in general practices with regard to disease incidence and prevalence [19].

Leisure-time PA of the Dutch population in the model's base year (2007) is described as a continuous distribution expressed in MET-hours. MET (Metabolic Equivalents) presents the energy costs of PA as a multiple of resting metabolic rate. MET-hours thereby include both duration and intensity of PA, and are assumed to have a dose-response relation to PA-related disease incidences. The dose-response regression parameters were obtained by meta-regression on several studies (see Additional file 1). Since literature only provides sufficient evidence on the relation between PA-related diseases and leisure-time PA, work-related PA was excluded from the model.

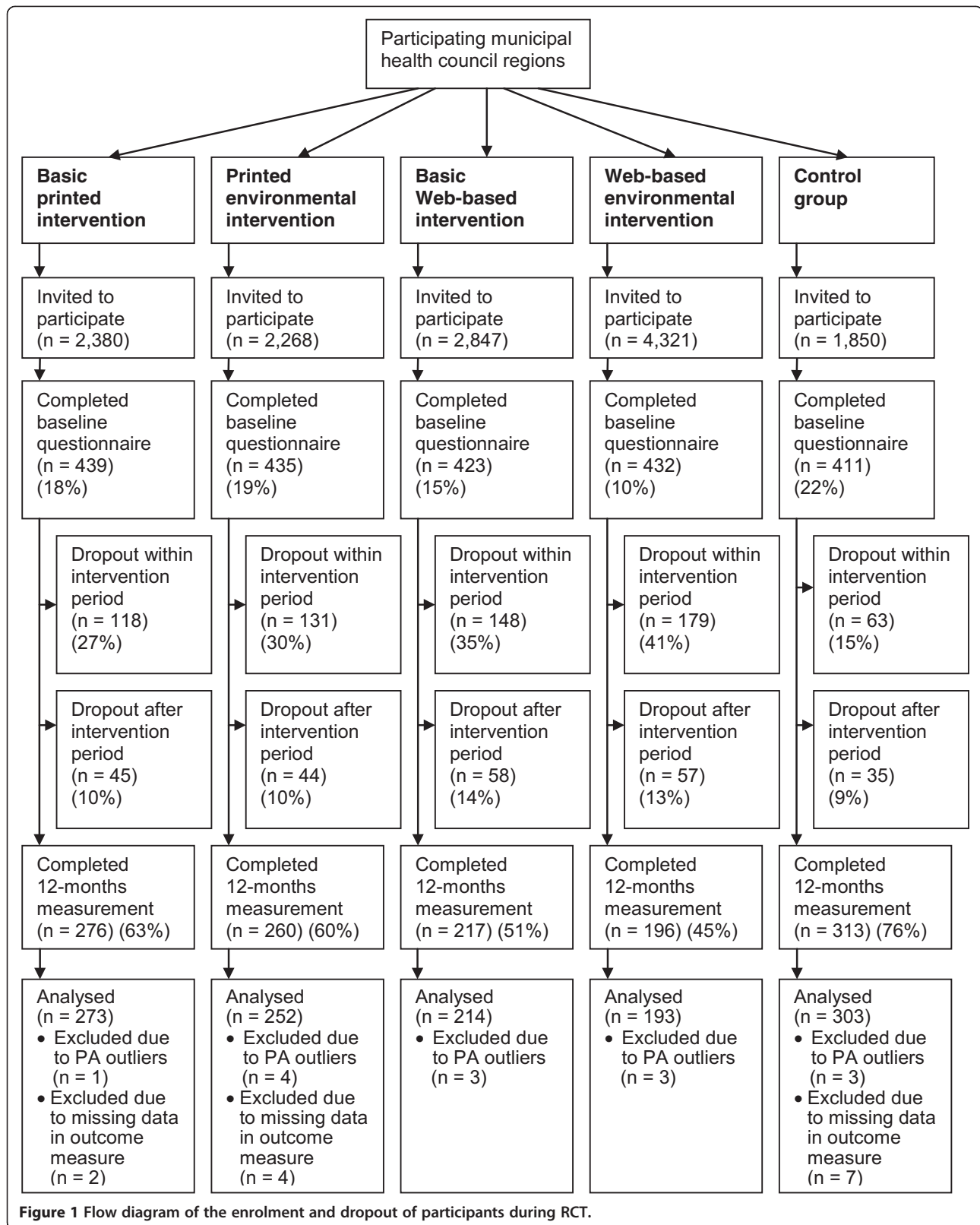
Tailored intervention

Active Plus is a computer-tailored, theory- and evidence-based intervention to stimulate or maintain PA in people aged over fifty by targeting pre-motivational constructs (i.e. awareness, knowledge), motivational constructs (i.e. attitude, self-efficacy, social influence, intrinsic motivation, and intention) and post-motivational constructs (i.e.

strategic planning, action planning and coping planning) [17]. The intervention was developed using the Intervention Mapping protocol [25], and based on several theoretical models such as the I-Change Model [26], transtheoretical model [27], the health action process approach [28], the precaution adoption model [29], the self-regulation theory [30], and the self-determination theory [31]. Whereas several models and studies have emphasized the importance the participants' perceptions of their environment in explaining PA behaviour [32-39], additional environmental information was added to the intervention.

In a previous phase of the Active Plus project (2005-2009), the printed intervention was proven to be effective in stimulating physical activity among the over-fifties until one year after the intervention started [40,41]. In a follow-up study (started in 2010), the intervention was adapted based on the results of the evaluation of the original (print-delivered) intervention, translated into a Web-based version [18], and implemented in an RCT in other regions than the previous Active Plus intervention. The intervention was thus available in a printed and in a Web-based delivery mode, with and without additional environmental information, resulting in the afore mentioned four intervention conditions. Intervention participants received three times tailored advice based on the answers given in previous assessments [17,18]: (1) after the baseline assessment; (2) two months after the baseline assessment; and (3) within four months after baseline assessment, based on a combination of the first and the second assessment. The specific content of the basic tailored advice depended on the participants' personal and psychosocial characteristics, PA behaviour, and the extent to which they were planning to change their behaviour [17]. Participants received among others a graphic that provided insight in their own PA behaviour compared to the average PA behaviour of similar others (same age and gender), model stories of similar others, information on the consequences of physical inactivity specifically for their own age group and gender, and suggestions on how to deal with their perceived barriers for physical activity. The intervention with additional environmental components contained the same information as the basic tailored intervention, with additional tailored advice on local PA possibilities and initiatives [42]. Participants received walking and cycling routes tailored to their own neighbourhood, home exercises tailored to their gender, and information on sports opportunities tailored to the opportunities in the participants own neighbourhood, the presence of a chronic physical limitation, and to the participants preferences (e.g. costs, inside or outside, being physically active with others or alone).

The content of the Web-based intervention was identical to the content of the printed intervention; however, the possibility to use interactive components was optimally used (i.e. static modelling pictures and PA exercises



were transferred into videos; the printed neighbourhood map was transferred into a Google neighbourhood map; several hyperlinks and a forum were added to the webpage). One day after receiving the online advice, participants in the Web-based intervention received an email with a copy (pdf format) of their advice, enabling them to print and save their tailored advice. The advice sent by email had the same format as the printed version. The tailored advice contained between five and 11 pages of text and illustrations, depending on (changes in) PA behaviour and determinant scores. The tailored advice texts, in the printed letter or on the website, formed the basis of the Active Plus intervention. Intervention components (mainly expressed in pictures/figures/videos or schema's) were added to the tailored advice to increase the active participation in the intervention. The specific content of the theoretical methods, practical strategies, and intervention components used in the current intervention have been described extensively elsewhere [42].

Study outcomes

Physical activity

PA was measured using the validated self-reported Dutch Short Questionnaire to Assess Health Enhancing Physical Activity (SQUASH), which has a reasonable reproducibility ($r_{\text{spearman}} = 0.58$; 95% CI = 0.36–0.74) and relative validity ($r_{\text{spearman}} = 0.45$; 95% CI = 0.17–0.66) for the general adult population [43].

Model outcomes

Model outcomes are annual QALYs, disease incidence numbers, and healthcare costs. Chronic Disease Model generates healthcare costs by multiplying disease-prevalence numbers with age and gender-specific cost-data from the Dutch Cost of Illness Study [44,45] and includes future savings in healthcare consumption due to increased PA as well as costs resulting from an increase in life years as a result of more PA [46].

Data analyses

Scenarios applied to the Chronic Disease Model

The Chronic Disease Model was implemented in R [47]. Long-term outcomes were simulated for five scenarios. The first scenario considered care-as-usual (i.e. the reference scenario, receiving no intervention) and was based on the model input data. The remaining scenarios reflected large-scale implementation of different intervention conditions, i.e. offering the intervention once to the entire Dutch population aged over 50 (i.e. 6.2 million people). To increase power and to provide the most reliable estimates of the intervention effect on self-reported PA, scenarios were not defined as single arms of the trial, but presented the printed and Web-based version (combining basic and

environmental) as well as the basic and environmental version (combining printed and Web-based).

The observed participation rates in the Active Plus RCT (i.e. 19% for the printed intervention; 12% for the Web-based intervention) [21] are assumed to increase in a real-life setting without additional questions for research purposes. A shortened questionnaire length presumably results in increased response rates for printed questionnaires with an odds ratio (OR) of 1.48 [95% CI = 1.06–2.07] [48] and for Web-based questionnaires with an OR of 1.73 [95% CI = 1.40–2.13] [49]. For the model analyses, the response rates were therefore estimated to be 28% ($1.48 \times 19\%$) for the printed intervention and 21% ($1.73 \times 12\%$) for the Web-based intervention. Finally, since the behaviour can be considered to be a habit after one year, and based on the results of another PA intervention in an older population, it was assumed that about 72% of the intervention effects on PA observed at 12 months persisted after these 12 months when the intervention is not continued [50].

Baseline differences

ANOVAs (with Tukey's post hoc-tests) and Chi-square tests were conducted to assess baseline differences in demographics and PA between the research arms. Following guidelines of the SQUASH [43], 14 respondents were excluded because of PA levels of more than 6,720 minutes per week since being physically active for 7 days per week, over 16 hours per day was considered to be unreliable.

Hierarchical logistic regression analyses were performed to study whether any of the demographic characteristics were predictors of dropout at the 12 month measurement, and whether these predictors differed between the research conditions.

Intervention effects on physical activity

To calculate the intervention effect, it is assumed that the effect on PA in non-responding participants at 12-months was equal to the control group (in similar age and gender subgroups). This assumption is more conservative than applying multiple imputations, since multiple imputations might overestimate intervention effects [51]. Differences between baseline and 12-months PA were calculated per intervention condition using a paired sample t-test in SPSS. Intervention scenarios combined two intervention groups and hence average (weighted) effects on PA were implemented in the Chronic Disease Model. To correct for baseline differences in demographics, the data on PA was implemented in the Chronic Disease Model per age subgroup (50–64 years, >64 years) and gender subgroup.

The effects of the different intervention conditions on PA were compared to the control group using a linear regression model with PA at 12 months as the dependent variable, and the dummies of the intervention conditions

(with the control group as a reference case) as independent variables, and corrected for age, gender, and baseline PA.

Since the current study relies on a clustered randomisation, it can be expected that participants can not be considered totally independently, because participants living within one cluster are more likely to be similar than participants selected at random [52]. However, previous multi-level analyses (including the individual participants and their neighbourhoods as separate levels) have shown that no cluster effects were found. For the current study, participants are therefore considered as independently.

Intervention costs

Material and time costs for recruitment and implementation were registered during the RCT. Based on these costs, intervention costs for a real-life setting (using shorter questionnaires, higher response rates and lower printing and postage costs) were estimated (Table 1). More detailed information on the intervention costs is published elsewhere [53]. Costs were divided into fixed costs, that is, costs unrelated to the number of participants (e.g. hosting costs for tailoring software) and variable costs, that is, costs related to the number of participants (e.g. postage and printing costs). Intervention scenarios combined two intervention groups and hence average costs were applied.

Calculation of cost-effectiveness

Incremental cost-effectiveness ratios (ICERs) were calculated by dividing incremental costs (euros) by the health benefits (QALYs gained) resulting from an increase in PA. Economic consequences are presented as: (1) intervention costs per QALY; and (2) total costs per QALY (including healthcare costs being saved as a result of increased PA and increased costs as a consequence of increased life expectancy). Future costs were discounted at 4% and effects on QALYs were discounted at 1.5% [54].

Although there is no official threshold in The Netherlands for the maximum Willingness-to-Pay (WTP), we used a threshold of €20,000/QALY, as this is commonly used for Dutch preventive interventions [55]. When an intervention results in higher effects and lower costs than the comparator, or higher effects and higher costs with

an ICER lower than the WTP, then the intervention is considered as cost-effective.

Uncertainty analyses

Uncertainty analyses were performed to investigate the robustness of the ICERs. Effectiveness levels on PA (and consequently the effects on QALYs and healthcare costs) were varied using the 95%CI of the RCT in Monte Carlo simulations (100 runs). Using R-package BCEA [56], the results were visualized in a cost-effectiveness plane and a cost-effectiveness acceptability curve (CEAC) representing the probability that one intervention scenario is more cost-effective than the others for a range of WTPs.

Sensitivity analyses were performed regarding the results on a lifetime horizon by applying discount rates of 4% and 0% on both costs and QALYs [54]. Also the response rates for actual implementation (and consequently the intervention costs per participant, since the fixed cost have to be divided by the number of participants) were varied in a sensitivity analysis, taking into account the uncertainty around the measured response rates and the 95% CI of the ratios used to correct the trial based estimate [48,49].

Results

Baseline characteristics

Baseline characteristics of the study population ($N = 2,140$) are shown in Table 2. Participants in the control group and the printed environmental intervention were significantly older than participants in the Web-based basic ($p = .001$; $p = .002$) and the Web-based environmental intervention ($p < .001$; $p < .001$); printed basic intervention participants were significantly older than Web-based environmental participants ($p = .001$). After 12 months, outcome measures were available for 1,235 participants (58%; Figure 1).

Dropout analyses showed that participants who received additional environmental information ($B = .398$, $p < .001$), participants in Web-based conditions ($B = .614$, $p < .001$), and younger participants ($B = -.016$, $p = .006$) were more likely to dropout from the 12 month follow-up measurement. Demographic predictors of dropout did not differ between the intervention conditions.

Intervention effects on physical activity

Effects of the intervention conditions on PA after 12 months are presented in Table 3 for the complete case analyses and the analyses using imputed values for participants who dropped out. Only the results using imputation are implemented in the Chronic Disease Model.

Analyses on the data including imputations showed that the printed basic (Δ MET-hours = 3.06; 95% CI = 0.38-5.75; $p = .025$) and printed environmental intervention (Δ MET-hours = 2.94; 95% CI = 0.26-5.62; $p = .031$) resulted in a significant increase in MET-hours. Since the control group

Table 1 Fixed and variable intervention costs in a real-life setting per intervention condition (price level 2011)

	Fixed costs (€)	Variable costs per participant (€)
Printed basic	3300	18
Printed environment	4270	21
Web-based basic	3420	8
Web-based environment	4880	8
Control group	-	-

Note: for more details see the article by Golsteijn et al. [53].

Table 2 Baseline characteristics of the participants, mean and standard deviation (SD)

	Control group (n = 411)	Printed basic (n = 439)	Printed environ. (n = 435)	Web-based basic (n = 423)	Web-based environ. (n = 432)	P
Mean age (years) (±SD)	64.2 (±9.5)	63.1 (±8.7)	64.0 (±9.4)	61.8 (±7.1)	60.8 (±7.5)	.00
Gender (% men)	49.9	45.9	45.3	52.3	51.3	.22
Education (% low)	50.3	43.5	47.3	46.1	47.8	.40
Paid job (%)	42.8	40.1	43.9	36.8	40.2	.27
MET-hours PA/week (±SD)	45.4 (±40.0)	41.6 (±37.7)	41.5 (±32.1)	42.9 (±38.9)	43.0 (±40.7)	.58

Note: bold numbers reflect a significant difference between the intervention conditions of $p < .05$.

decrease PA, the effect of the printed basic intervention ($p = .022$) and the printed environmental intervention ($p = .030$) were even more significant when compared to the control group. The increase in MET-hours of both Web-based interventions was not statistically significant.

Long-term health benefits

The printed and the Web-based intervention scenarios decreased incidences for PA-related diseases (Table 4). This indicates that although the effect of the Web-based intervention was not statistically significant, it can be clinically relevant. The effects on incidence numbers reduce at longer follow-up times. The printed scenario results in a larger disease incidence decrease than the Web-based scenario, since it was more effective and showed lower dropout rates [16]. Providing additional environmental information resulted in increased incidences compared to the basic intervention, since the effectiveness was lower and dropout was higher.

The printed scenario results in more QALYs gained (i.e. 312,000 QALYs on a lifetime horizon) than the Web-based scenario (i.e. 78,000 QALYs on a lifetime horizon). Compared to the basic intervention, the environmental intervention results in a decrease of 129,000 QALYs. These results are visualized in Figure 2, in which the lines present the QALYs gained for the printed and the Web-based intervention in contrast to care-as-usual (i.e. the zero line in the figure), and for the environmental intervention in contrast to the basic intervention (i.e. the zero line in the figure).

Cost-effectiveness

Considering a WTP of €20,000/QALY, on a 10-year and on a lifetime horizon, both the printed and Web-based scenarios were cost-effective (Table 5). On a 5-year horizon (when health-effects are not that noticeable yet), however, the Web-based scenario was only borderline cost-effective and the printed scenario was not cost-effective.

Comparing the Web-based to the printed scenario, on a 10-year and on a lifetime horizon monetary savings gained by implementing the Web-based intervention instead of the printed intervention do not outweigh its lower effects (i.e. the ICER of the Web-based intervention versus the printed intervention is lower than the WTP). Since both the cost and the effects are negative when comparing the Web-based intervention to the printed intervention, in this case the WTP can be seen as the minimum amount of money that the society would like to save by implementing a less effective intervention. Since the ICER of the Web-based intervention compared to the printed intervention is lower than €20,000, the monetary savings of implementing the Web-based intervention do not outweigh its lower effects, making the printed intervention the preferred intervention condition on a 10 year or a lifetime horizon. In contrast, on a 5-year horizon, the lower intervention costs of the Web-based intervention when compared to the printed intervention do outweigh the loss in effectiveness over this short time horizon. An ICER of €32,290/QALY indicates that for a decrease of one QALY in effect compared to the printed intervention, society would save €32,290, making the Web-based intervention the preferred intervention condition on a 5-year time horizon.

Table 3 Overview of the weekly MET-hours spent on leisure PA per intervention condition

	Baseline		12 months(complete cases)		12 months(imputed)		Δ MET-hours	
	N	MET-hours[95% CI]	N	MET-hours[95% CI]	N	MET-hours[95% CI]	MET-hours[95% CI]	P-value
Printed basic	429	41.60[38.02-45.18]	273	47.97[43.74-52.29]	427	44.87[41.08-48.66]	3.06[0.38-5.75]	.025
Printed environment	419	41.45[38.37-44.45]	252	50.00[44.91-55.10]	417	44.58[40.87-48.30]	2.94[0.26-5.62]	.031
Web-based basic	421	42.89[39.16-46.61]	214	48.57[42.96-54.19]	418	43.71[39.77-47.65]	0.73[-1.94-3.41]	.591
Web-based environment	425	42.95[39.07-46.84]	193	43.16[37.45-48.43]	425	42.74[39.07-46.40]	-0.22[-3.19-2.76]	.887
Control group	402	45.39[41.47-49.30]	303	43.49[39.54-47.44]	397	42.85[39.14-46.55]	-2.20[-5.10-.71]	.139

Note: Differences in MET-hours between both measurements were calculated using the data including imputations for participants who dropped out; bold numbers reflect a significant difference between the intervention conditions of $p < .05$.

Table 4 Relative change in incidence numbers for PA-related diseases after extrapolating the Active Plus intervention effects

	Printed intervention vs. control			Web-based intervention vs. control			Environmental vs. basic		
	5 year	10 year	Life time	5 year	10 year	Life time	5 year	10 year	Life time
Diabetes	-3.1%	-2.8%	-2.0%	-1.3%	-1.0%	-0.6%	1.2%	1.1%	0.8%
Colon cancer	-2.1%	-2.0%	-1.3%	-1.0%	-0.9%	-0.4%	0.8%	0.8%	0.5%
Breast cancer	-0.6%	-0.6%	-0.3%	-0.3%	-0.2%	-0.1%	-0.3%	-0.3%	-0.2%
AMI	-2.3%	-2.2%	-1.4%	-1.1%	-1.0%	-0.4%	1.3%	1.2%	0.8%
Stroke	-1.7%	-1.5%	-0.8%	-0.8%	-0.7%	-0.3%	0.5%	0.5%	0.3%

AMI = Acute myocardial infarction.

The environmental scenario results in higher intervention costs and lower effects than the basic scenario. However, total costs of the environmental scenario on lifetime horizon are lower than the basic scenario, because the basic scenario results in increased life years, and thereby increased healthcare costs. These monetary savings of the environmental scenario do not outweigh the loss in health gains (ICER < €20,000/QALY).

Uncertainty analyses

Figure 3 shows that on all time horizons, the outcomes of the printed and the Web-based scenarios are mainly located in the north-east quadrant of the cost-effectiveness plane implying that both scenarios are more effective and have higher costs than care-as-usual. On a 5-year horizon, the ICER is mainly located above the WTP (i.e. not cost-effective). On a 10-year and a lifetime horizon, the ICER is mainly below the WTP (i.e. cost-effective). The probability of the printed and Web-based interventions being cost-effective compared to care-as-usual is higher on a 10-year

horizon than on a 5-year horizon (Figure 4), since the effects on QALYs and health-care costs become more noticeable over time. On a life-time horizon, probability of being cost-effective slightly declines as a result of a higher life expectancy (due to increased PA), and thereby an increase in healthcare costs.

The outcomes of the environmental scenario (in contrast to the basic scenario) move from the north-west quadrant to the south-west quadrant of the cost-effectiveness plane when the time horizon increases (Figure 3), implying that incremental costs of the environmental scenario decrease with time. At a WTP of €20,000/QALY, the environmental scenario had a probability of less than 20% of being cost-effective on all time horizons (compared to the basic intervention) (Figure 4).

Analyses varying discount and participation rates mainly resulted in comparable ICERs (Table 6). A remarkable difference is observed in the ICER of the Web-based scenario with minimal participation. Since intervention costs of the Web-based intervention mainly exist of fixed costs and less costs per participant when compared to the printed intervention, a lower participation rate results in higher intervention costs per participant than the printed intervention. All other sensitivity analyses resulted in an ICER < 20,000, proving cost-effectiveness of the intervention and confirming the robustness of the results.

Discussion

The printed and Web-based intervention result in decreased disease incidences and increased QALYs and thus have an important contribution to public health. On a lifetime horizon, the printed and Web-based interventions both have acceptable costs per QALY gained when compared to care-as-usual, and are thus cost-effective. Additional effects of the printed intervention compared to the Web-based intervention are obtained at relatively low additional costs, making the printed intervention the preferred intervention condition in the longer time horizons. Although Web-based tailored interventions have the potential to be more cost-effective [57], this is not confirmed in our study. To further increase cost-effectiveness of Web-based tailored interventions, sustainability of the

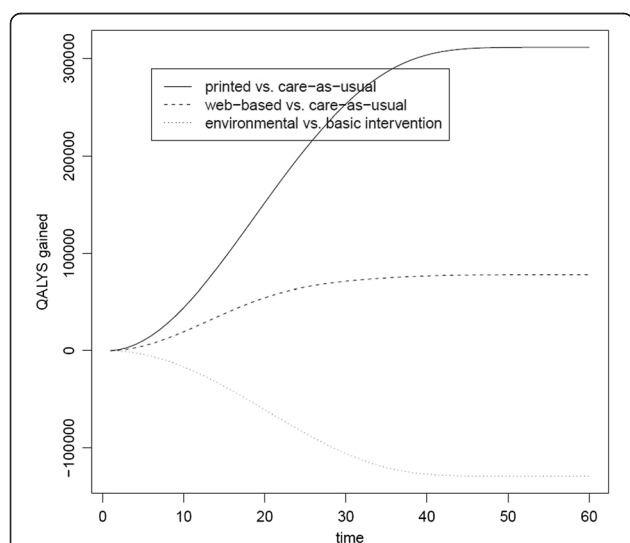


Figure 2 Delta (absolute) cumulative QALYs gained presented for the printed and the Web-based intervention in contrast to care-as-usual, and for the environmental intervention in contrast to the basic intervention.

Table 5 Long-term health effects, costs and cost-effectiveness of the different intervention scenarios

Time horizon		Web-based intervention	Printed intervention	Basic intervention	Environmental intervention	
5 years	<i>Incremental effects (versus care-as-usual)</i>					
		QALYs gained	430	1,040	–	-330
	<i>Incremental costs (versus care-as-usual)_a</i>					
		Intervention costs	10	30	20	20
		Total costs _b	10	30	–	0
	<i>Incremental intervention costs per QALY gained_c</i>					
		Versus care-as-usual	20,500	29,700	–	–
		Web-based vs. Printed/ Environment vs. Basic	–	36,180	–	-6,500
	<i>Incremental total costs per QALY gained_c</i>					
		Versus care-as-usual	20,760	27,520	–	–
	Web-based vs. Printed/ Environment vs. Basic	–	32,290	–	-8,690	
10 years	<i>Incremental effects (versus care-as-usual)</i>					
		QALYs gained	1,990	5,120	–	-1,700
	<i>Incremental costs (versus care-as-usual)_a</i>					
		Intervention costs	10	30	20	20
		Total costs _b	20	40	–	0
	<i>Incremental intervention costs per QALY gained_c</i>					
		Versus care-as-usual	4,410	6,010	–	–
		Web-based vs. Printed/ Environment vs. Basic	–	7,020	–	-1,260
	<i>Incremental total costs per QALY gained_c</i>					
		Versus care-as-usual	8,450	7,590	–	–
	Web-based vs. Printed/ Environment vs. Basic	–	7,040	–	-470	
Lifetime	<i>Incremental effects (versus care-as-usual)</i>					
		QALYs gained	9,150	44,380	–	-16,770
	<i>Incremental costs (versus care-as-usual)_a</i>					
		Intervention costs	10	30	20	20
		Total costs _b	90	330	–	-90
	<i>Incremental intervention costs per QALY gained_c</i>					
		Versus care-as-usual	960	690	–	–
		Web-based vs. Printed/ Environment vs. Basic	–	620	–	-130
	<i>Incremental total costs per QALY gained_c</i>					
		Versus care-as-usual	10,100	7,500	–	–
	Web-based vs. Printed/ Environment vs. Basic	–	6,830	–	5,290	

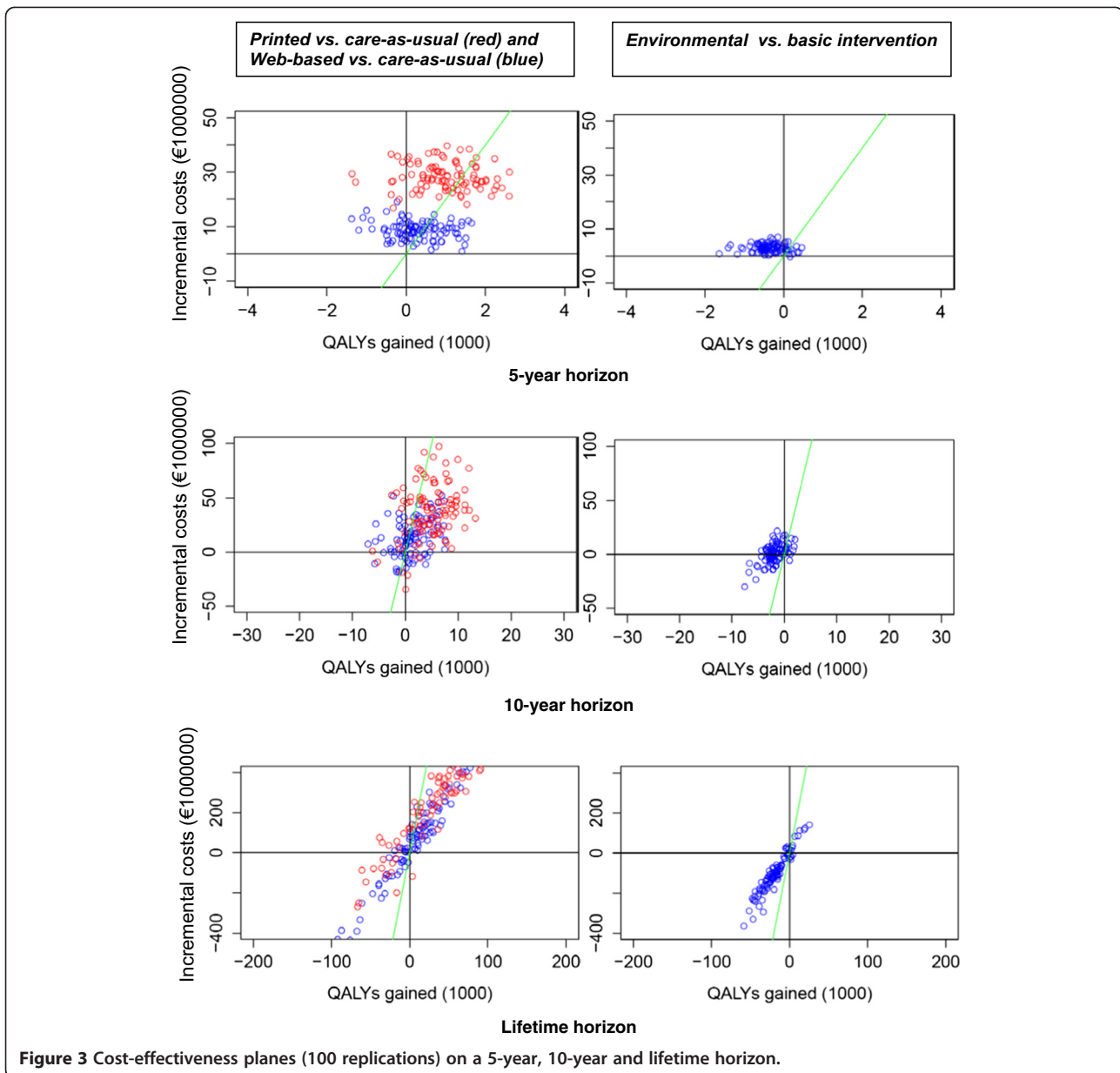
_aIn millions of euros; _bIntervention costs corrected for health-care cost; _ccalculated according to the formula ICER = (Costs₁-Costs₂)/(Effects₁-Effects₂).

effects of Web-based interventions should be improved and dropout should be prevented [16].

On a 5-year horizon, however, the cheaper, less effective Web-based intervention is the preferred intervention condition. This implies that when health-related effects are not that noticeable yet, the cheapest intervention is the preferred one. The cost-effectiveness of many prevention interventions is heavily influenced by the time horizon over which analyses are conducted, since they require upfront investments followed by long-term health benefits.

Adding environmental information to the intervention results in higher intervention costs, and did not increase effectiveness as hypothesized [18], making it less cost-effective than the basic intervention. The lack of effect of the extended intervention may be caused by an information overload, resulting in higher dropout from the intervention and decreased effectiveness [16].

To our knowledge, this is the first study on long-term (i.e. lifetime) cost-effectiveness of different delivery modes of computer-tailored PA interventions among older adults. A study by Lewis et al. [58] provided insight into costs



associated with internet and print-delivered PA interventions; however, these insights were not presented in relation to the effects of the interventions. A review on the cost-effectiveness of PA interventions showed that behavioural interventions reached recommended PA levels at a cost of 800 euros per participant over a 12-month period [59]. Another review showed that high-intensity, personalized behaviour-change programs was one of the least cost-effective strategies to promote PA, while these also had one of the largest effect sizes [60]. Unfortunately, neither review identified costs per QALY gained, decreasing its comparability with studies on other health behaviours, nor did they include cost-effectiveness over a longer time horizon.

Strengths and limitations

A main strength of this study is that cost-effectiveness of the intervention is extrapolated beyond the time horizon of the RCT using a model-based approach, resulting in summary measures of population health [19]. However, modelling unavoidably involves making assumptions, which increases the outcomes' uncertainty. One of the assumptions made was on the persistence of the intervention effect. Based on the results of another PA intervention in an older population, it was assumed that about 72% of the intervention effects on PA observed at 12 months persisted [50]. A study of McAuley et al that was performed among older adults showed a persistence of 85% of the PA behaviour from year 1 (M = 148.80) to year 5

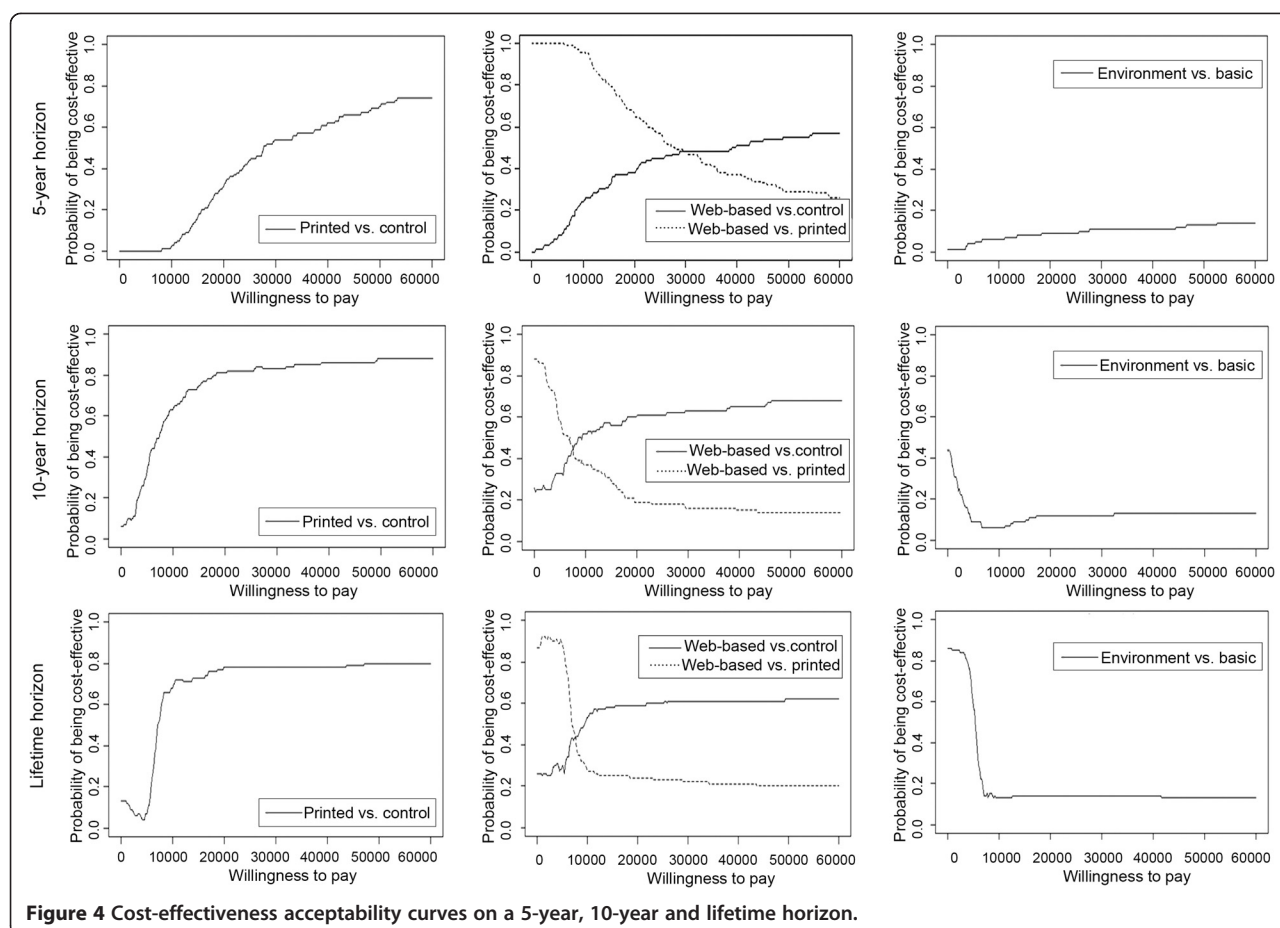


Table 6 Uncertainty analyses varying the participation rates and the discount rates of the results on a life time horizon

Analysis		Web-based intervention	Printed intervention	Environmental intervention vs. basic
Primary	Incremental costs per QALY gained _{c,d}			
	Versus care-as-usual	10,100	7,500	—
	Web-based vs. Printed/Environment vs. Basic	—	6,830	5,290
Minimal participation_a	Incremental costs per QALY gained _{c,d}			
	Versus care-as-usual	20,170	7,480	—
	Web-based vs. Printed/Environment vs. Basic	—	6,510	5,180
Maximum participation_b	Incremental costs per QALY gained _{c,d}			
	Versus care-as-usual	9,190	7,450	—
	Web-based vs. Printed/Environment vs. Basic	—	7,060	4,760
4% discount on costs and effects	Incremental costs per QALY gained _{c,d}			
	Versus care-as-usual	15,360	12,150	—
	Web-based vs. Printed/Environment vs. Basic	—	11,340	8,890
0% discount on costs and effects	Incremental costs per QALY gained _{c,d}			
	Versus care-as-usual	16,580	13,800	—
	Web-based vs. Printed/Environment vs. Basic	—	13,310	11,100

^aThe lowest boundary of the 95% CI of the OR used to calculate the response rate; ^bThe highest boundary of the 95% CI of the OR used to calculate the response rate; ^cIn millions of euros; ^dcalculated according to the formula $ICER = (Costs_1 - Costs_2) / (Effects_1 - Effects_2)$.

($M = 126.72$) after a six month intervention period [61]. A study on the Diabetes Prevention Program, showed a persistence of 76% of the PA behaviour from the end of a lifestyle intervention (where an increase 21.5 met h/week was observed) to year five (were 16.3 met h/week of the PA behaviour was maintained) [62]. Compared to both studies, and taken into account that the Chronic Disease Models additionally projects a decrease in PA behaviour over time as a result of an increase in age, our assumption on the persistence of the intervention effect is relatively conservative.

Other important assumptions made were on the population being reached by the intervention, the effect in participants who dropped-out, and on the immediate dose-response relationship between PA-levels and PA-related disease risks. In reality, a more complex relation might exist with all past PA-levels and other affecting risk behaviours (e.g. smoking). Furthermore, the reach of the intervention might differ due to the use of different recruitment strategies. However, the current approach is in line with estimates from literature, and in most cases assumptions were made as conservative as possible. Sensitivity analyses making variations in assumptions, proved the robustness of the results in this paper.

A disadvantage of the CDM is that it only keeps track of the probability of having a disease, but not includes the probability of having multiple diseases [19]. Another main aspect of the CDM is its Markov type 1 property, which means that conditional on the current demographics and risk factors, future probabilities are estimated independent of the past behaviours [19]. As it can be expected that, especially in an older population, past PA behaviours will determine ones future health states as well, outcomes might be different if past behaviours were included as well.

Another limitation of the current study is that effectiveness estimates were based on self-reported PA. Although self-reports may be less accurate than objective observations, self-administered questionnaires are valid, most commonly used, and most inexpensive method to use in large-scale studies. However, stronger validation of the effects on PA using objective measurements is recommended [63]. Furthermore, the baseline level of PA observed in the current study population was relatively high. This might be caused by the use of self-reported PA questionnaires. Increasing PA behaviour in a highly active population might not make much health differences. However, the relative risk ratios used in the Chronic Disease Model are based on a broad range of PA behaviours to prevent overestimating of the health effects in populations who were already highly active. Promoting PA in less active populations might result in higher health effects and consequently more positive cost-effectiveness ratios.

A final limitation is that the current modelling analyses were only performed from a preventive perspective (i.e.

the effects of PA on a decreased risk on diabetes, colon cancer, breast cancer, acute myocardial infarctions, stroke were calculated), ignoring other potential health related effects of increased PA, like improved mobility and independence, improved muscle strength, cognitive functioning, and mental and emotional well-being, and a decreased risk of falling among older adults [64-69]. Furthermore, by only including myocardial infarction and not including other potential heart diseases (due to a lack of valid data) the health effect of the intervention might be underestimated. If all those aspects were taken into account as well, the effect of the intervention on quality of life might have been even higher.

Conclusion

In conclusion, our study shows that a tailored PA intervention can improve health and quality of life of people aged over 50 against acceptable costs, and thereby has an important public health contribution. The printed basic intervention has the most potential for being cost-effective in adults aged over fifty.

Additional file

Additional file 1: Application of the Chronic Disease Model including the risk factor physical (in)activity as a continuous variable.

Competing interests

Hein de Vries is scientific director of Vision2Health, a company that licenses evidence-based innovative computer-tailored health communication tools. Further, the authors declare that they have no competing interests.

Authors' contributions

DP and RG gathered the data and performed the primary analyses to determine the intervention effect on physical activity. RH, GW and TF have performed the modelling analyses. DP wrote the first draft of the manuscript. The process was supervised by LL, CB, HV, and AM. Special expertise regarding cost-effectiveness analyses was provided by TF. All authors read, modified and approved the final manuscript.

Acknowledgements

This study was funded by The Netherlands Organization for Health Research and Development (ZonMw, 200110006). The design of the current study was in agreement with ZonMw, but they did not play any role in the collection, analysis and interpretation of the data nor in writing the manuscript.

Author details

¹Department of Psychology and Educational Sciences, Open University of the Netherlands, PO Box 2960, 6401 DL Heerlen, The Netherlands. ²Centre for Nutrition, Prevention and Health Services, National Institute for Public Health and the Environment (RIVM), Bilthoven, The Netherlands. ³Department of Health Promotion, Maastricht University, Maastricht, The Netherlands. ⁴Caphri School of Public Health and Primary Care, Maastricht University, Maastricht, The Netherlands. ⁵University Medical Centre Groningen, Groningen, The Netherlands.

Received: 9 July 2014 Accepted: 29 September 2014

Published: 23 October 2014

References

1. Lee IM, Shiroma EJ, Lobelo F, Puska P, Blair SN, Katzmarzyk PT: Effect of physical inactivity on major non-communicable diseases worldwide: an

- analysis of burden of disease and life expectancy. *Lancet* 2012, **380**(9838):219–229.
2. World Health Organization: *Health and Development through Physical Activity and Sport*. Geneva: WHO Document Production Services; 2003.
 3. Hallal PC, Andersen LB, Bull FC, Guthold R, Haskell W, Ekelund U: **Global physical activity levels: surveillance progress, pitfalls, and prospects**. *Lancet* 2012, **380**:247–257.
 4. WHO Europe: **Steps to health: a european framework to promote physical activity for health**. In Copenhagen: WHO Europe; 2007.
 5. Oldridge NB: **Economic burden of physical inactivity: healthcare costs associated with cardiovascular disease**. *Eur J Cardiovasc Prev Rehabil* 2008, **15**(2):130–139.
 6. Colman R, Walker S: **The cost of physical inactivity in British Columbia**. In *Genuine Progress Index for Atlantic Canada - Measuring sustainable development*. Glen Haven: Ministry of Health Planning; 2004.
 7. Hagberg L: *Cost-effectiveness of the promotion of physical activity in health care*. Umea: Umea University; 2007.
 8. Sevick MA, Dunn AL, Morrow MS, Marcus BH, Chen GJ, Blair SN: **Cost-effectiveness of lifestyle and structured exercise interventions in sedentary adults. Results from project ACTIVE**. *Am J Prev Med* 2000, **19**(1):1–8.
 9. Garrett S, Elley CR, Rose SB, O'Dea D, Lawton BA, Dowell AC: **Are physical activity interventions in primary care and the community cost-effective? A systematic review of the evidence**. *Br J Gen Pract* 2011, **61**(584):e125–133.
 10. *Global Strategy on Diet, Physical Activity and Health*. [http://www.who.int/dietphysicalactivity/pa/en/index.html#].
 11. King AC, Rejeski WJ, Buchner DM: **Physical activity interventions targeting older adults. A critical review and recommendations**. *Am J Prev Med* 1998, **15**(4):316–333.
 12. Ackermann RT, Cheadle A, Sandhu N, Madsen L, Wagner EH, LoGerfo JP: **Community exercise program use and changes in healthcare costs for older adults**. *Am J Prev Med* 2003, **25**(3):232–237.
 13. Woodcock J, Franco OH, Orsini N, Roberts I: **Non-vigorous physical activity and all-cause mortality: systematic review and meta-analysis of cohort studies**. *Int J Epidemiol* 2011, **40**(1):121–138.
 14. Noar SM, Benac CN, Harris MS: **Does tailoring matter? Meta-analytic review of tailored print health behavior change interventions**. *Psychol Bull* 2007, **133**(4):673–693.
 15. Krebs P, Prochaska JO, Rossi JS: **A meta-analysis of computer-tailored interventions for health behaviour change**. *Prev Med* 2010, **51**:214–221.
 16. Peels DA, Bolman C, Golsteijn RHJ, De Vries H, Mudde AN, Van Stralen MM, Lechner L: **Long-term efficacy of a tailored physical activity intervention among older adults**. *Int J Behav Nutr Phys Act* 2013, **10**:104.
 17. Van Stralen MM, Kok G, De Vries H, Mudde AN, Bolman C, Lechner L: **The Active Plus protocol: systematic development of two theory and evidence-based tailored physical activity interventions for the over-fifties**. *BMC Public Health* 2008, **8**:399.
 18. Peels DA, Van Stralen MM, Bolman C, Golsteijn RHJ, De Vries H, Mudde AN, Lechner L: **The Development of a Web-Based Computer Tailored Advice to Promote Physical Activity Among People Older Than 50 Years**. *J Med Internet Res* 2012, **14**(2):e39.
 19. Hoogenveen RT, van Baal PH, Boshuizen HC: **Chronic disease projections in heterogeneous ageing populations: approximating multi-state models of joint distributions by modelling marginal distributions**. *Math Med Biol* 2010, **27**(1):1–19.
 20. Ammann R, Vandelandotte C, De Vries H, Mummery K: **Can a Website-delivered computer-tailored physical activity intervention be acceptable, usable, and effective in older people?** *Health Educ & Behav* 2013, **40**(2):160–170.
 21. Peels DA, Bolman C, Golsteijn RHJ, De Vries H, Mudde AN, Van Stralen MM, Lechner L: **Differences in Reach and Attrition between Web-based or Print-delivered Tailored Interventions among Adults aged over Fifty**. *J Med Internet Res* 2012, **14**(6):e179.
 22. Roux L, Pratt M, Tengs TO, Yore MM, Yanagawa TL, Va Den Bosch J, Rutt C, Brownson RC, Powell KE, Heath G, Kohl HW 3rd, Teutsch S, Cawley J, Lee IM, West L, Buchner DM: **Cost effectiveness of community-based physical activity interventions**. *Am J Prev Med* 2008, **35**(6):578–588.
 23. Graves N, Barnett AG, Halton K, Veerman J, Winkler E, Owen N, Reeves MM, Marshall A, Eakin E: **Cost-effectiveness of a telephone-delivered intervention for physical activity and diet**. *PLoS One* 2009, **4**(9):e7135.
 24. Gulliford M, Charlton J, Bhattarai N, Rudisill C: **Social and material deprivation and the cost-effectiveness of an intervention to promote physical activity: cohort study and Markov model**. *J Public Health (Oxf)* 2014, Epub ahead of print.
 25. Bartholomew LK, Parcel GS, Kok G, Gottlieb NH, Fernandez ME: *Planning health promotion programs: an intervention mapping approach*. 3rd edition. San Francisco: Jossey-Bass; 2011.
 26. De Vries H, Mesters I, Riet JV, Willems K, Reubsat A: **Motives of Belgian Adolescents for Using Sunscreen: The Role of Action Plans**. *Cancer Epidemiol Biomarkers Prev* 2006, **15**(7):1360–1366.
 27. Prochaska JO, DiClemente CC: **Stages and processes of self-change of smoking: toward an integrative model of change**. *J Consult Clin Psychol* 1983, **51**(3):390–395.
 28. Schwarzer R: **The Health Action Approach (HAPA)**. In 2009.
 29. Weinstein ND: **The precaution adoption process**. *Health Psychol* 1988, **7**(4):355–386.
 30. Baumeister RF, Vohs KD: *Handbook of self-regulation: research, theory, and applications*. New York: The Guilford Press; 2004.
 31. Ryan R, Deci E: **Active human nature: self-determination theory and the promotion and maintenance of sport, exercise and health**. In *Intrinsic motivation and self-determination in exercise and sport*. Edited by Hagger MS, Chatzisarantis NLD. Champaign: Human Kinetics Europe Ltd; 2007:1–19.
 32. Owen N, Humpel N, Leslie E, Bauman A, Sallis JF: **Understanding environmental influences on walking: Review and research agenda**. *Am J Prev Med* 2004, **27**(1):67–76.
 33. Humpel N, Owen N, Iverson D, Leslie E, Bauman A: **Perceived environment attributes, residential location and walking for particular purposes**. *Am J Prev Med* 2004, **26**(2):119–125.
 34. Humpel N, Marshall AL, Leslie E, Bauman A, Owen N: **Changes in neighborhood walking are related to changes in perceptions of environmental attributes**. *Ann Behav Med* 2004, **27**(1):60–67.
 35. Sallis JF, King AC, Sirard JR, Albright CL: **Perceived environmental predictors of physical activity over 6 months in adults: activity counseling trial**. *Health Psychol* 2007, **26**(6):701–709.
 36. Kremers SP, De Bruijn GJ, Droomers M, Van Lenthe F, Brug J: **Moderators of environmental intervention effects on diet and activity in youth**. *Am J Prev Med* 2007, **32**(2):163–172.
 37. Harrington DW, Elliot SJ: **Weighing the importance of neighbourhood: a multilevel exploration of the determinants of overweight and obesity**. *Soc Sci Med* 2009, **68**(4):593–600.
 38. De Bourdeaudhuij I, Sallis JF, Saelens BE: **Environmental correlates of physical activity in a sample of Belgian adults**. *Am J Health Promot* 2003, **18**(1):83–92.
 39. Hobbs N, Godfrey A, Lara J, Errington L, Meyer TD, Rochester L, White M, Methers JC, Sniehotta FF: **Are behavioural interventions effective in increasing physical activity at 12 to 36 months in adults aged 55 to 70 years? A systematic review and meta-analysis**. *BMC Medicine* 2013, **11**:75.
 40. Van Stralen MM, De Vries H, Mudde AN, Bolman C, Lechner L: **The Long-Term Efficacy of Two Computer-Tailored Physical Activity Interventions for Older Adults: Main Effects and Mediators**. *Health Psychol* 2011, **30**(4):442–452.
 41. Van Stralen MM, De Vries H, Mudde AN, Bolman C, Lechner L: **Efficacy of Two Tailored Interventions Promoting Physical Activity in Older Adults**. *Am J Prev Med* 2009, **37**(5):405–417.
 42. Peels DA, De Vries H, Bolman C, Golsteijn RHJ, Van Stralen MM, Mudde AN, Lechner L: **Differences in the use and appreciation of a Web-based or printed computer tailored physical activity intervention for people aged over fifty**. *Health Educ Res* 2013, **28**(4):715–731.
 43. Wendel-Vos GCW, Schuit AJ, Saris WH, Kromhout D: **Reproducibility and relative validity of the short questionnaire to assess health-enhancing physical activity**. *J Clin Epidemiol* 2003, **56**(12):1163–1169.
 44. Van Baal PHM, Feenstra TL, Hoogenveen RT, De Wit GA: *Cost effectiveness analysis with the RIVM Chronic Disease Model*. Bilthoven: RIVM; 2005. Report No 260706002.
 45. Van Baal PHM, Polder J, De Wit GA, Hoogenveen RT, Feenstra TL, Boshuizen H, Engelfriet P, Brouwer WBF: **Lifetime medical costs of obesity: prevention no cure for increasing health expenditure**. *PLoS Med* 2008, **5**:e29.
 46. Van Baal PHM, Feenstra TL, Hoogenveen RT, De Wit GA, Brouwer WBF: **Unrelated medical care in life years gained and the cost utility of primary prevention: in search of a 'perfect' cost-utility ratio**. *Health Econ* 2007, **16**(4):421–433.
 47. R Development Core Team: *R: A language and environment for statistical computing*, vol. ISBN 3-900051-07-0. Vienna, Austria: R Foundation for Statistical Computing; 2008. URL http://www.R-project.org.

48. Sahlqvist S, Song Y, Bull F, Adams E, Preston J, Ogilvie D: **Effect of questionnaire length, personalisation and reminder type on response rate to a complex postal survey: randomised controlled trial.** *BMC Med Res Methodol* 2011, **11**:62.
49. Edwards PJ, Roberts I, Clarke MJ, DiGiuseppi C, Wentz R, Kwan I, Cooper R, Felix LM, Pratap S: **Methods to increase response to postal and electronic questionnaires (Review).** *Cochrane Database Syst Rev* 2009, **3**:MR000008.
50. Bemelmans WJE, Wendel-Vos GCW, Bogers RP, Milder IEJ, De Hollander EL, Barte JCM, Tariq L, Jacobs-van der Bruggen MAM: **Kosteneffectiviteit beweeg- en dieetadvisering bij mensen met (hoog risico op) diabetes mellitus type 2: Literatuuronderzoek en modelsimulaties rondom de beweegkuur.** In Edited by RIVM. Bilthoven: RIVM; 2008.
51. Lee KJ, Simpson JA: **Introduction to multiple imputation for dealing with missing data.** *Respirology* 2014, **19**:162–167.
52. Schulz K, Altman D, Moher D: **CONSORT 2010 Statement: updated guidelines for reporting parallel group randomised trials.** *Br Med J* 2010, **340**:c322.
53. Golsteyn RHJ, Peels DA, Evers SMAA, Bolman C, Mudde AN, De Vries H, Lechner L: **Cost-effectiveness and Cost-utility of a Web-based or Print-delivered Tailored Intervention to promote Physical Activity among Adults aged over Fifty: an economic evaluation of the Active Plus intervention.** *Int J Behav Nutr Phys Act.* 2014, **11**:122.
54. Hakkaart-van Roijen L, Tan S, Bouwmans C: *Handleiding voor kostenonderzoek: Methoden en standaard kostprijzen voor economische evaluaties in de gezondheidszorg (in Dutch).* Rotterdam: College voor Zorgverzekeringen; 2010.
55. RVZ: **Zinnige en duurzame zorg: transparante keuzen in de zorg voor een houdbaar zorgstelsel.** In Zoetermeer: Raad voor de Volksgezondheid en Zorg; 2006.
56. Baio G, Dawid A: **Probabilistic sensitivity analysis in health economics.** *Stat Methods Med Res* 2011, **10.1177/0962280211419832**.
57. Tate DF, Finkelstein EA, Khavjou O: **Cost effectiveness of internet interventions: review and recommendations.** *Ann Behav Med* 2009, **38**:40–45.
58. Lewis B, Williams D, Neighbors C, Jakicic J, Marcus B: **Cost analysis of internet vs. print interventions for physical activity promotion.** *Psychol Sport Exerc* 2010, **11**(3):246–249.
59. Muller-Riemenschneider F, Reinhold T, Willich S: **Cost-effectiveness of interventions promoting physical activity.** *Br J Sports Med* 2009, **43**:70–76.
60. Wu S, Cohen D, Shi Y, Pearson M, Sturm R: **Economic analysis of physical activity interventions.** *Am J Prev Med* 2011, **40**(2):149–158.
61. McAuley E, Morris KS, Motl RW, Hu L, Konopack JF, Elavsky S: **Long-term follow-up of physical activity behaviour in older adults.** *Health Psychol* 2007, **26**(3):375–380.
62. Orchard TJ, Temprosa M, Barrett-Conno E, Fowler SE, Goldberg RB, Mather KJ, Marcovina SM, Montez M, Ratner RE, Saudek CD, Sherif H, Watson KE: **Long-term effects of the Diabetes Prevention Program interventions on cardiovascular risk factors: a report from the DPP Outcomes Study.** *Diabet Med* 2012, **30**(1):46–55.
63. Helmerhorst HJF, Brage S, Warren J, Besson H, Ekelund U: **A systematic review of reliability and objective criterion-related validity of physical activity questionnaires.** *Int J Behav Nutr Phys Act* 2012, **9**:103.
64. Department of Health: **At least five a week: Evidence on the impact of physical activity and its relationship to health.** In London: Department of Health; 2004.
65. Nelson ME, Rejeski WJ, Blair SN, Duncan PW, Judge JO, King AC, Macera CA, Castaneda-Sceppa C: **Physical activity and public health in older adults: recommendation from the American College of Sports Medicine and the American Heart Association.** *Med Sci Sports Exerc* 2007, **39**(8):1435–1445.
66. Haskell WL, Lee IM, Pate RR, Powell KE, Blair SN, Franklin BA, Macera CA, Heath GW, Thompson PD, Bauman A: **Physical Activity and Public Health: Updated Recommendation for Adults From the American College of Sports Medicine and the American Heart Association.** *Circulation* 2007, **116**(9):1081–1093.
67. Janssen I, Jolliffe CJ: **Influence of physical activity on mortality in elderly with coronary artery disease.** *Med Sci Sports Exerc* 2006, **38**(3):418–423.
68. Kesaniemi YK, Danforth EJ, Jensen MD, Kopelman PG, Lefebvre P, Reeder B: **Dose-response issues concerning physical activity and health: an evidence-based symposium.** *Med Sci Sports Exerc* 2001, **33**(6):S351–S358.
69. TNO Kwaliteit van Leven: *Trendrapport Bewegen en Gezondheid 2004/2005.* Leiden: De Bink; 2007.

doi:10.1186/1471-2458-14-1099

Cite this article as: Peels et al.: Long-term health outcomes and cost-effectiveness of a computer-tailored physical activity intervention among people aged over fifty: modelling the results of a randomized controlled trial. *BMC Public Health* 2014 **14**:1099.

Submit your next manuscript to BioMed Central and take full advantage of:

- Convenient online submission
- Thorough peer review
- No space constraints or color figure charges
- Immediate publication on acceptance
- Inclusion in PubMed, CAS, Scopus and Google Scholar
- Research which is freely available for redistribution

Submit your manuscript at
www.biomedcentral.com/submit

