

University of Groningen

Relative and Absolute Configuration of Allohedycaryol. Enantiospecific Total Synthesis of Its Enantiomer

Zhabinskii, Vladimir N.; Minnaard, Adriaan; Wijnberg, Joannes B.P.A.; Groot, Aede de

Published in:
The Journal of Organic Chemistry

DOI:
[10.1021/jo9602534](https://doi.org/10.1021/jo9602534)

IMPORTANT NOTE: You are advised to consult the publisher's version (publisher's PDF) if you wish to cite from it. Please check the document version below.

Document Version
Publisher's PDF, also known as Version of record

Publication date:
1996

[Link to publication in University of Groningen/UMCG research database](#)

Citation for published version (APA):

Zhabinskii, V. N., Minnaard, A. J., Wijnberg, J. B. P. A., & Groot, A. D. (1996). Relative and Absolute Configuration of Allohedycaryol. Enantiospecific Total Synthesis of Its Enantiomer. *The Journal of Organic Chemistry*, 61(12). DOI: 10.1021/jo9602534

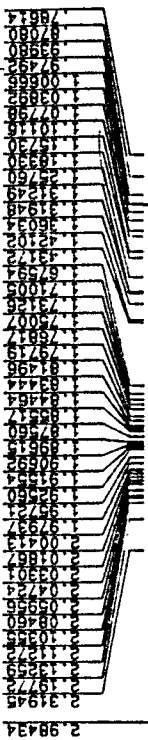
Copyright

Other than for strictly personal use, it is not permitted to download or to forward/distribute the text or part of it without the consent of the author(s) and/or copyright holder(s), unless the work is under an open content license (like Creative Commons).

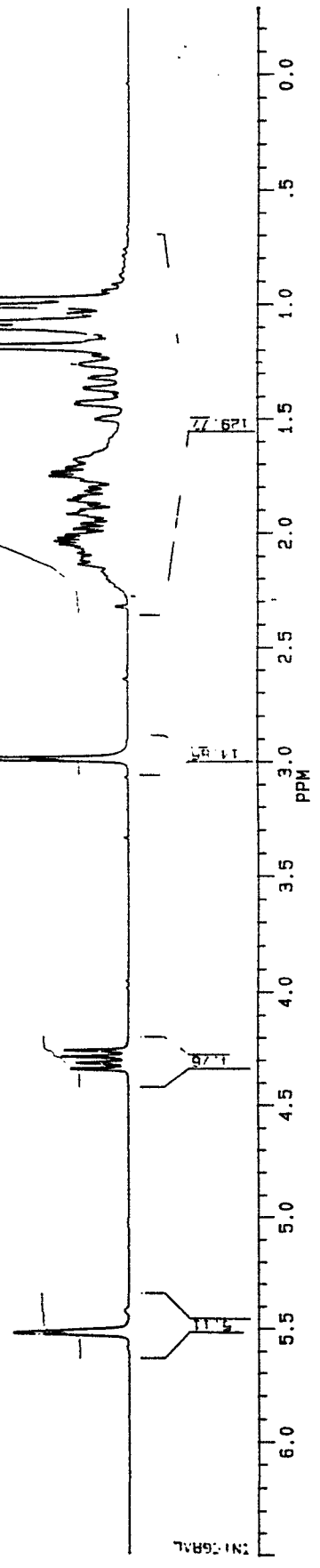
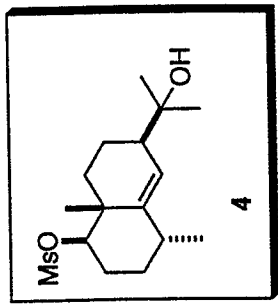
Take-down policy

If you believe that this document breaches copyright please contact us providing details, and we will remove access to the work immediately and investigate your claim.

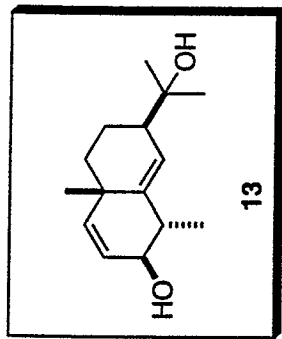
Downloaded from the University of Groningen/UMCG research database (Pure): <http://www.rug.nl/research/portal>. For technical reasons the number of authors shown on this cover page is limited to 10 maximum.



BEN95H.100
 DATE 24-8-95
 SF 200.132
 SY 80.0
 O1 3250.000
 SI 16384
 TD 16384
 SW 3496.503
 HZ/PT .427
 PW 4.0
 RD .700
 AQ 2.343
 RG 4
 NS 32
 TE 297
 FW 4400
 O2 -10000.000
 DP 63L P0
 LB -.300
 GB .200
 CX 33.00
 CY 0.0
 F1 6.501P
 F2 -.290P
 HZ/CM 41.182
 PPM/CM 41.206
 SR 2342.50



7.20391



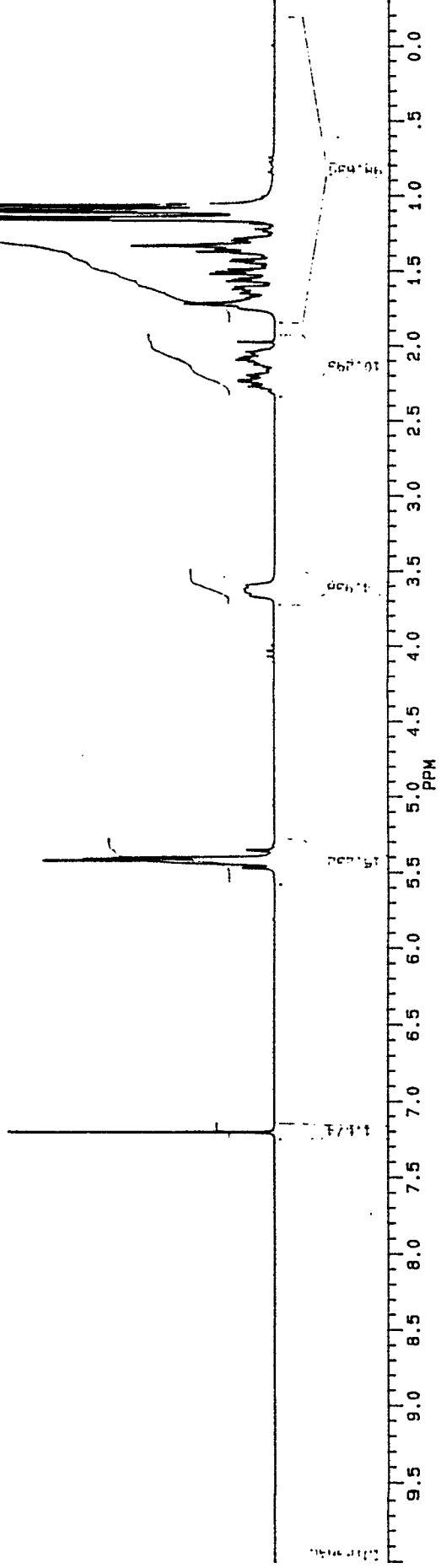
4.7303
4.6877
4.6352
4.5927
4.5502
4.5077
4.4652
4.4227
4.3802
4.3377
4.2952
4.2527
4.2102
4.1677
4.1252
4.0827
4.0402
3.9977
3.9552
3.9127
3.8702
3.8277
3.7852
3.7427
3.7002
3.6577
3.6152
3.5727
3.5302
3.4877
3.4452
3.4027
3.3602
3.3177
3.2752
3.2327
3.1902
3.1477
3.1052
3.0627
3.0202
2.9777
2.9352
2.8927
2.8502
2.8077
2.7652
2.7227
2.6802
2.6377
2.5952
2.5527
2.5102
2.4677
2.4252
2.3827
2.3402
2.2977
2.2552
2.2127
2.1702
2.1277
2.0852
2.0427
2.0002
1.9577
1.9152
1.8727
1.8302
1.7877
1.7452
1.7027
1.6602
1.6177
1.5752
1.5327
1.4902
1.4477
1.4052
1.3627
1.3202
1.2777
1.2352
1.1927
1.1502
1.1077
1.0652
1.0227
0.9802
0.9377
0.8952
0.8527
0.8102
0.7677
0.7252
0.6827
0.6402
0.5977
0.5552
0.5127
0.4702
0.4277
0.3852
0.3427
0.3002
0.2577
0.2152
0.1727
0.1302
0.0877
0.0452
0.0027

4.07004
4.03433
3.99862
3.96291
3.92720
3.89149

3.90078
3.86507
3.82936
3.79365
3.75794
3.72223

3.1002
3.06451
3.02880
2.99309
2.95738
2.92167
2.88596
2.85025
2.81454
2.77883
2.74312
2.70741
2.67170
2.63599
2.60028
2.56457
2.52886
2.49315
2.45744
2.42173
2.38602
2.35031
2.31460
2.27889
2.24318
2.20747
2.17176
2.13605
2.10034
2.06463
2.02892
1.99321
1.95750
1.92179
1.88608
1.85037
1.81466
1.77895
1.74324
1.70753
1.67182
1.63611
1.60040
1.56469
1.52898
1.49327
1.45756
1.42185
1.38614
1.35043
1.31472
1.27901
1.24330
1.20759
1.17188
1.13617
1.10046
1.06475
1.02904
0.99333
0.95762
0.92191
0.88620
0.85049
0.81478
0.77907
0.74336
0.70765
0.67194
0.63623
0.60052
0.56481
0.52910
0.49339
0.45768
0.42197
0.38626
0.35055
0.31484
0.27913
0.24342
0.20771
0.17200
0.13629
0.10058
0.06487
0.02916
0.00000

BRUKER
 JU070S.104
 4J PRO3:
 KCO.1AJ
 DATE 7-2-99
 SF 80.0
 DI 30.0
 SC 32.00
 SM 10.00
 TE 297
 PW 0
 RO 0
 AD 4
 RB 4
 NS 25
 TE 297
 FM 5100
 DZ 2250
 DP 63.70
 LB
 GB
 CX 33
 CY 20
 F1 10
 F2 CM 58
 PE MCM
 SR 2551





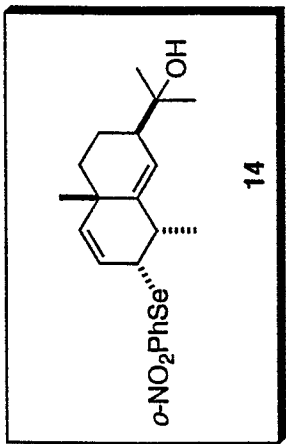
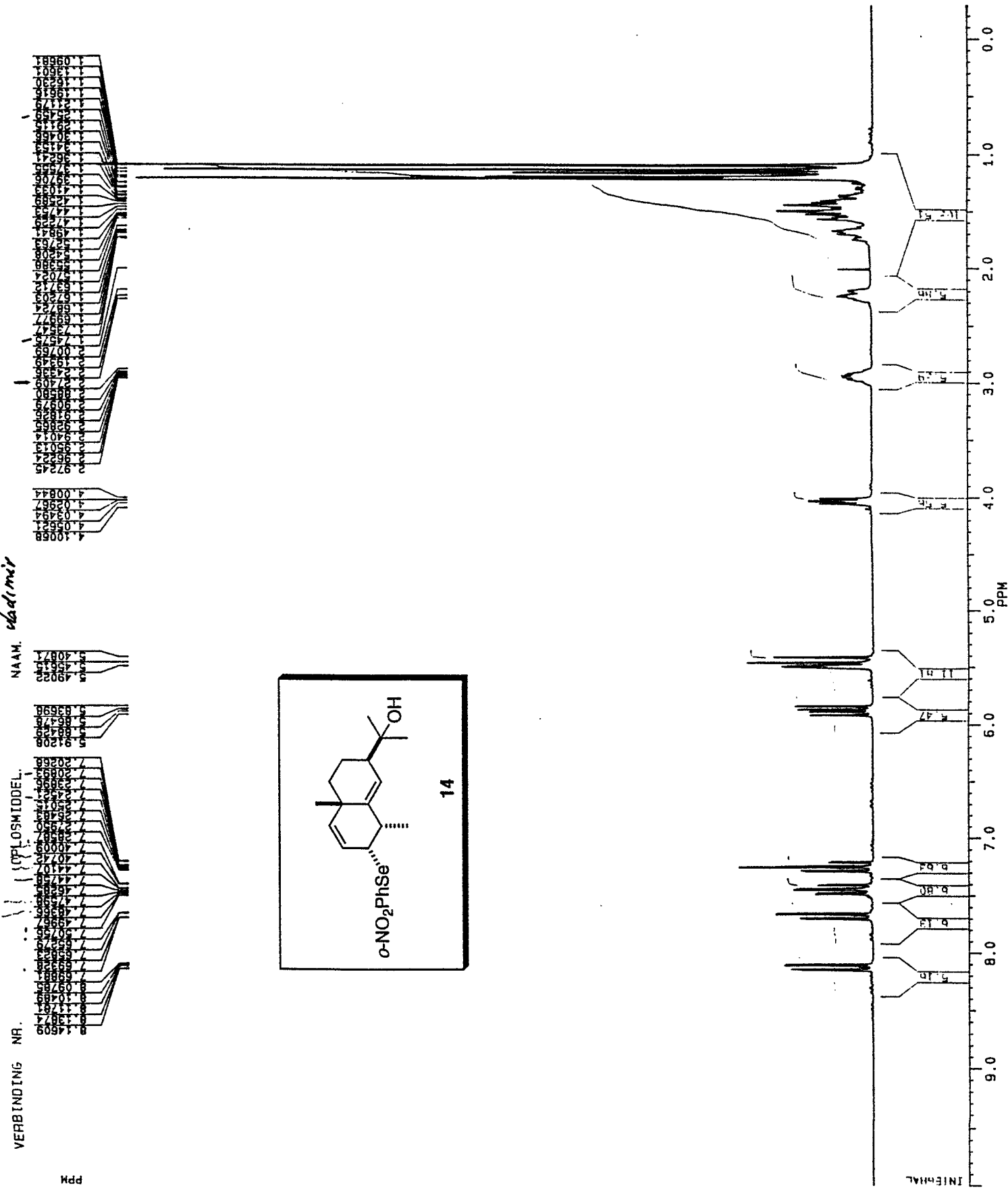
BENJ95H.102
DATE 24-8-95

SF 200.132
SY 80.0
O1 3250.000
SI 16384
TD 16384
SM 3496.503
HZ/PT .427

PM 4.0
RD .700
AQ 2.343
RG 1
NS 24
TE 297

FW 400
O2 -10000.000
DP 63L P0

LB -.300
GB .200
CX 33.00
CY 0.0
F1 10.001P
F2 -.292P
HZ/CM 62.419
PPM/CM .312
SR 2342.50



VERBINDING NR. 6057
OPLOS MIDDEL
NAAM
4.10068
4.05621
4.03494
4.02567
4.00844
9.7245
9.6624
9.6224
9.5514
9.4014
9.2504
9.1804
9.1104
9.0404
8.9704
8.9004
8.8304
8.7604
8.6904
8.6204
8.5504
8.4804
8.4104
8.3404
8.2704
8.2004
8.1304
8.0604
7.9904
7.9204
7.8504
7.7804
7.7104
7.6404
7.5704
7.5004
7.4304
7.3604
7.2904
7.2204
7.1504
7.0804
7.0104
6.9404
6.8704
6.8004
6.7304
6.6604
6.5904
6.5204
6.4504
6.3804
6.3104
6.2404
6.1704
6.1004
6.0304
5.9604
5.8904
5.8204
5.7504
5.6804
5.6104
5.5404
5.4704
5.4004
5.3304
5.2604
5.1904
5.1204
5.0504
4.9804
4.9104
4.8404
4.7704
4.7004
4.6304
4.5604
4.4904
4.4204
4.3504
4.2804
4.2104
4.1404
4.0704
4.0004
3.9304
3.8604
3.7904
3.7204
3.6504
3.5804
3.5104
3.4404
3.3704
3.3004
3.2304
3.1604
3.0904
3.0204
2.9504
2.8804
2.8104
2.7404
2.6704
2.6004
2.5304
2.4604
2.3904
2.3204
2.2504
2.1804
2.1104
2.0404
1.9704
1.9004
1.8304
1.7604
1.6904
1.6204
1.5504
1.4804
1.4104
1.3404
1.2704
1.2004
1.1304
1.0604
1.0004
0.9304
0.8604
0.7904
0.7204
0.6504
0.5804
0.5104
0.4404
0.3704
0.3004
0.2304
0.1604
0.1004
0.0304

VERBINDING NR.

OPLOSMIDDEL.

NAAM.

7009.4
6548.3
6498.3
6424.4
6416.9
6383.7
6340.7
6310.8
6290.1
6270.4
6250.7
6231.0
6211.3
6191.6
6171.9
6152.2
6132.5
6112.8
6093.1
6073.4
6053.7
6034.0
6014.3
5994.6
5974.9
5955.2
5935.5
5915.8
5896.1
5876.4
5856.7
5837.0
5817.3
5797.6
5777.9
5758.2
5738.5
5718.8
5699.1
5679.4
5659.7
5640.0
5620.3
5600.6
5580.9
5561.2
5541.5
5521.8
5502.1
5482.4
5462.7
5443.0
5423.3
5403.6
5383.9
5364.2
5344.5
5324.8
5305.1
5285.4
5265.7
5246.0
5226.3
5206.6
5186.9
5167.2
5147.5
5127.8
5108.1
5088.4
5068.7
5049.0
5029.3
5009.6
4989.9
4970.2
4950.5
4930.8
4911.1
4891.4
4871.7
4852.0
4832.3
4812.6
4792.9
4773.2
4753.5
4733.8
4714.1
4694.4
4674.7
4655.0
4635.3
4615.6
4595.9
4576.2
4556.5
4536.8
4517.1
4497.4
4477.7
4458.0
4438.3
4418.6
4398.9
4379.2
4359.5
4339.8
4320.1
4300.4
4280.7
4261.0
4241.3
4221.6
4201.9
4182.2
4162.5
4142.8
4123.1
4103.4
4083.7
4064.0
4044.3
4024.6
4004.9
3985.2
3965.5
3945.8
3926.1
3906.4
3886.7
3867.0
3847.3
3827.6
3807.9
3788.2
3768.5
3748.8
3729.1
3709.4
3689.7
3670.0
3650.3
3630.6
3610.9
3591.2
3571.5
3551.8
3532.1
3512.4
3492.7
3473.0
3453.3
3433.6
3413.9
3394.2
3374.5
3354.8
3335.1
3315.4
3295.7
3276.0
3256.3
3236.6
3216.9
3197.2
3177.5
3157.8
3138.1
3118.4
3098.7
3079.0
3059.3
3039.6
3019.9
2999.2
2979.5
2959.8
2940.1
2920.4
2900.7
2881.0
2861.3
2841.6
2821.9
2802.2
2782.5
2762.8
2743.1
2723.4
2703.7
2684.0
2664.3
2644.6
2624.9
2605.2
2585.5
2565.8
2546.1
2526.4
2506.7
2487.0
2467.3
2447.6
2427.9
2408.2
2388.5
2368.8
2349.1
2329.4
2309.7
2290.0
2270.3
2250.6
2230.9
2211.2
2191.5
2171.8
2152.1
2132.4
2112.7
2093.0
2073.3
2053.6
2033.9
2014.2
1994.5
1974.8
1955.1
1935.4
1915.7
1896.0
1876.3
1856.6
1836.9
1817.2
1797.5
1777.8
1758.1
1738.4
1718.7
1699.0
1679.3
1659.6
1639.9
1620.2
1600.5
1580.8
1561.1
1541.4
1521.7
1502.0
1482.3
1462.6
1442.9
1423.2
1403.5
1383.8
1364.1
1344.4
1324.7
1305.0
1285.3
1265.6
1245.9
1226.2
1206.5
1186.8
1167.1
1147.4
1127.7
1108.0
1088.3
1068.6
1048.9
1029.2
1009.5
989.8
970.1
950.4
930.7
911.0
891.3
871.6
851.9
832.2
812.5
792.8
773.1
753.4
733.7
714.0
694.3
674.6
654.9
635.2
615.5
595.8
576.1
556.4
536.7
517.0
497.3
477.6
457.9
438.2
418.5
398.8
379.1
359.4
339.7
320.0
300.3
280.6
260.9
241.2
221.5
201.8
182.1
162.4
142.7
123.0
103.3
83.6
63.9
44.2
24.5
4.8

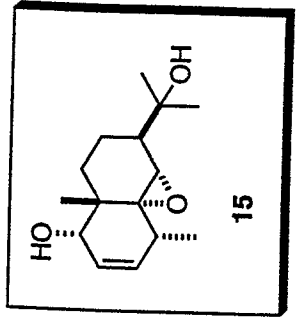
3.17518

3.54375

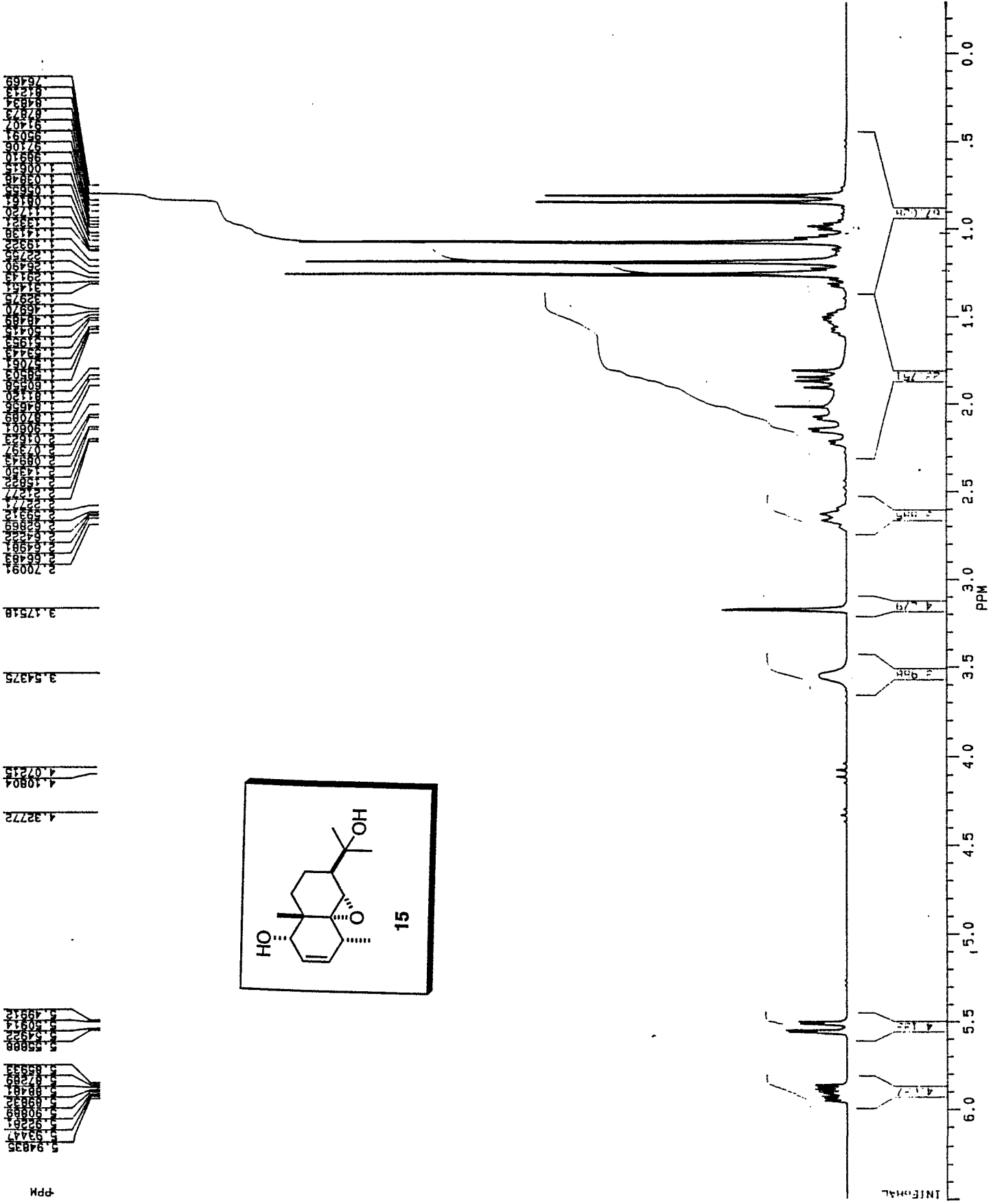
4.10804

4.32772

9483.5
9463.8
9444.1
9424.4
9404.7
9385.0
9365.3
9345.6
9325.9
9306.2
9286.5
9266.8
9247.1
9227.4
9207.7
9188.0
9168.3
9148.6
9128.9
9109.2
9089.5
9069.8
9050.1
9030.4
9010.7
8991.0
8971.3
8951.6
8931.9
8912.2
8892.5
8872.8
8853.1
8833.4
8813.7
8794.0
8774.3
8754.6
8734.9
8715.2
8695.5
8675.8
8656.1
8636.4
8616.7
8597.0
8577.3
8557.6
8537.9
8518.2
8498.5
8478.8
8459.1
8439.4
8419.7
8399.0
8379.3
8359.6
8339.9
8320.2
8300.5
8280.8
8261.1
8241.4
8221.7
8202.0
8182.3
8162.6
8142.9
8123.2
8103.5
8083.8
8064.1
8044.4
8024.7
8005.0
7985.3
7965.6
7945.9
7926.2
7906.5
7886.8
7867.1
7847.4
7827.7
7808.0
7788.3
7768.6
7748.9
7729.2
7709.5
7689.8
7670.1
7650.4
7630.7
7611.0
7591.3
7571.6
7551.9
7532.2
7512.5
7492.8
7473.1
7453.4
7433.7
7414.0
7394.3
7374.6
7354.9
7335.2
7315.5
7295.8
7276.1
7256.4
7236.7
7217.0
7197.3
7177.6
7157.9
7138.2
7118.5
7098.8
7079.1
7059.4
7039.7
7020.0
7000.3
6980.6
6960.9
6941.2
6921.5
6901.8
6882.1
6862.4
6842.7
6823.0
6803.3
6783.6
6763.9
6744.2
6724.5
6704.8
6685.1
6665.4
6645.7
6626.0
6606.3
6586.6
6566.9
6547.2
6527.5
6507.8
6488.1
6468.4
6448.7
6429.0
6409.3
6389.6
6369.9
6350.2
6330.5
6310.8
6291.1
6271.4
6251.7
6232.0
6212.3
6192.6
6172.9
6153.2
6133.5
6113.8
6094.1
6074.4
6054.7
6035.0
6015.3
5995.6
5975.9
5956.2
5936.5
5916.8
5897.1
5877.4
5857.7
5838.0
5818.3
5798.6
5778.9
5759.2
5739.5
5719.8
5699.1
5679.4
5659.7
5640.0
5620.3
5600.6
5580.9
5561.2
5541.5
5521.8
5502.1
5482.4
5462.7
5443.0
5423.3
5403.6
5383.9
5364.2
5344.5
5324.8
5305.1
5285.4
5265.7
5246.0
5226.3
5206.6
5186.9
5167.2
5147.5
5127.8
5108.1
5088.4
5068.7
5049.0
5029.3
5009.6
4989.9
4970.2
4950.5
4930.8
4911.1
4891.4
4871.7
4852.0
4832.3
4812.6
4792.9
4773.2
4753.5
4733.8
4714.1
4694.4
4674.7
4655.0
4635.3
4615.6
4595.9
4576.2
4556.5
4536.8
4517.1
4497.4
4477.7
4458.0
4438.3
4418.6
4398.9
4379.2
4359.5
4339.8
4320.1
4300.4
4280.7
4261.0
4241.3
4221.6
4201.9
4182.2
4162.5
4142.8
4123.1
4103.4
4083.7
4064.0
4044.3
4024.6
4004.9
3985.2
3965.5
3945.8
3926.1
3906.4
3886.7
3867.0
3847.3
3827.6
3807.9
3788.2
3768.5
3748.8
3729.1
3709.4
3689.7
3670.0
3650.3
3630.6
3610.9
3591.2
3571.5
3551.8
3532.1
3512.4
3492.7
3473.0
3453.3
3433.6
3413.9
3394.2
3374.5
3354.8
3335.1
3315.4
3295.7
3276.0
3256.3
3236.6
3216.9
3197.2
3177.5
3157.8
3138.1
3118.4
3098.7
3079.0
3059.3
3039.6
3019.9
2999.2
2979.5
2959.8
2940.1
2920.4
2900.7
2881.0
2861.3
2841.6
2821.9
2802.2
2782.5
2762.8
2743.1
2723.4
2703.7
2684.0
2664.3
2644.6
2624.9
2605.2
2585.5
2565.8
2546.1
2526.4
2506.7
2487.0
2467.3
2447.6
2427.9
2408.2
2388.5
2368.8
2349.1
2329.4
2309.7
2290.0
2270.3
2250.6
2230.9
2211.2
2191.5
2171.8
2152.1
2132.4
2112.7
2093.0
2073.3
2053.6
2033.9
2014.2
1994.5
1974.8
1955.1
1935.4
1915.7
1896.0
1876.3
1856.6
1836.9
1817.2
1797.5
1777.8
1758.1
1738.4
1718.7
1699.0
1679.3
1659.6
1639.9
1620.2
1600.5
1580.8
1561.1
1541.4
1521.7
1502.0
1482.3
1462.6
1442.9
1423.2
1403.5
1383.8
1364.1
1344.4
1324.7
1305.0
1285.3
1265.6
1245.9
1226.2
1206.5
1186.8
1167.1
1147.4
1127.7
1108.0
1088.3
1068.6
1048.9
1029.2
1009.5
989.8
970.1
950.4
930.7
911.0
891.3
871.6
851.9
832.2
812.5
792.8
773.1
753.4
733.7
714.0
694.3
674.6
654.9
635.2
615.5
595.8
576.1
556.4
536.7
517.0
497.3
477.6
457.9
438.2
418.5
398.8
379.1
359.4
339.7
320.0
300.3
280.6
260.9
241.2
221.5
201.8
182.1
162.4
142.7
123.0
103.3
83.6
63.9
44.2
24.5
4.8



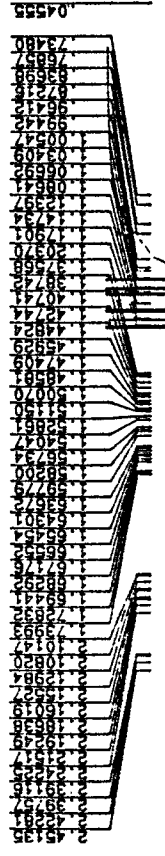
BEN95H.105
DATE 28-8-95
SF 200.132
SY 80.0
SI 3250.000
TD 16384
SM 3496.503
HZ/PT .427
PW 4.0
RD 1.700
AG 2.343
RG 4
NS 32
TE 297
FW 4400
O2 -10000.000
DP 63L P0
LB -.300
GB .200
CX 33.00
CY 0.0
F1 6.501P
F2 -.290P
HZ/CM 41.182
PPM/CM
SR 2342.50



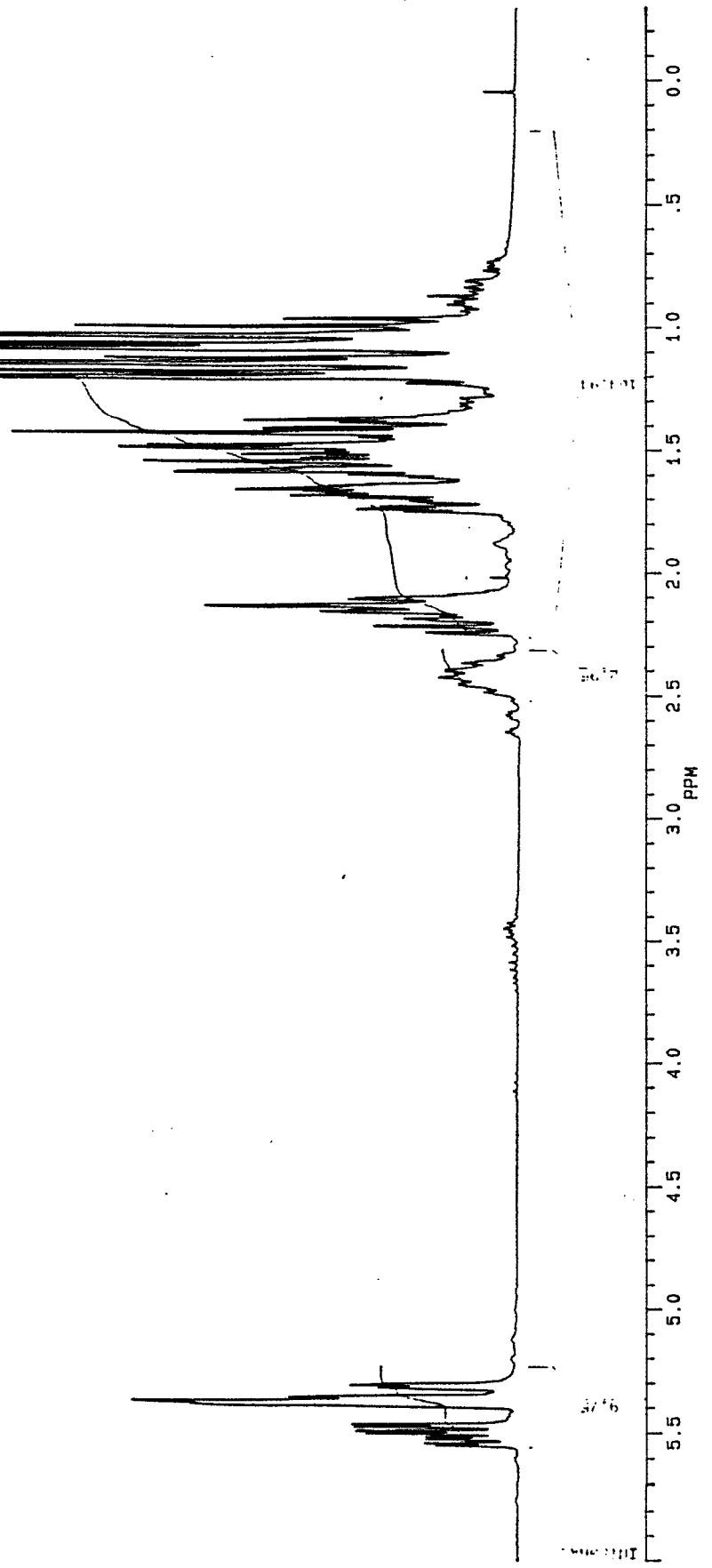
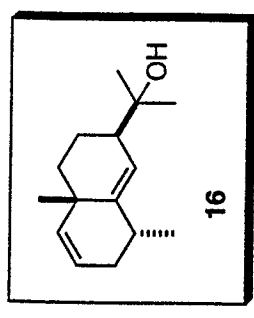
DATE

UPLOADED

VENTILATION



BEN95H.083
 DATE 21-7-95
 SF 200.132
 SY 80.0
 O1 3250.000
 SI 16384
 TD 16384
 SM 3496.503
 HZ/PT .427
 PW 4.0
 RD .700
 AG 2.343
 RG 2
 NS 32
 TE 297
 FM 4400
 O2 -10000.000
 DP 63L P0
 LB -.300
 GB .200
 CX 33.00
 CY 0.0
 F1 6.000P
 F2 -.292P
 HZ/CM 38.155
 PPM/CM .191
 SR 2342.50



2.2973
 2.2874
 2.2353
 1.9603
 1.9433
 1.9219
 1.8857
 1.8386
 1.8206
 1.8028
 1.7889
 1.7750
 1.7589
 1.7450
 1.7311
 1.7172
 1.7033
 1.6894
 1.6755
 1.6616
 1.6477
 1.6338
 1.6199
 1.6060
 1.5921
 1.5782
 1.5643
 1.5504
 1.5365
 1.5226
 1.5087
 1.4948
 1.4809
 1.4670
 1.4531
 1.4392
 1.4253
 1.4114
 1.3975
 1.3836
 1.3697
 1.3558
 1.3419
 1.3280
 1.3141
 1.3002
 1.2863
 1.2724
 1.2585
 1.2446
 1.2307
 1.2168
 1.2029
 1.1890
 1.1751
 1.1612
 1.1473
 1.1334
 1.1195
 1.1056
 1.0917
 1.0778
 1.0639
 1.0500
 1.0361
 1.0222
 1.0083
 0.9944
 0.9805
 0.9666
 0.9527
 0.9388
 0.9249
 0.9110
 0.8971
 0.8832
 0.8693
 0.8554
 0.8415
 0.8276
 0.8137
 0.7998
 0.7859
 0.7720
 0.7581
 0.7442
 0.7303
 0.7164
 0.7025
 0.6886
 0.6747
 0.6608
 0.6469
 0.6330
 0.6191
 0.6052
 0.5913
 0.5774
 0.5635
 0.5496
 0.5357
 0.5218
 0.5079
 0.4940
 0.4801
 0.4662
 0.4523
 0.4384
 0.4245
 0.4106
 0.3967
 0.3828
 0.3689
 0.3550
 0.3411
 0.3272
 0.3133
 0.2994
 0.2855
 0.2716
 0.2577
 0.2438
 0.2299
 0.2160
 0.2021
 0.1882
 0.1743
 0.1604
 0.1465
 0.1326
 0.1187
 0.1048
 0.0909
 0.0770
 0.0631
 0.0492
 0.0353
 0.0214
 0.0075

