

University of Groningen

The Native Structure and Composition of the Cruciferin Complex in *Brassica napus*

Nietzel, Thomas; Dudkina, Natalya V.; Haase, Christin; Denolf, Peter; Semchonok, Dmytro; Boekema, Egbert J.; Braun, Hans-Peter; Sunderhaus, Stephanie

Published in:
The Journal of Biological Chemistry

DOI:
[10.1074/jbc.M112.356089](https://doi.org/10.1074/jbc.M112.356089)

IMPORTANT NOTE: You are advised to consult the publisher's version (publisher's PDF) if you wish to cite from it. Please check the document version below.

Document Version
Publisher's PDF, also known as Version of record

Publication date:
2013

[Link to publication in University of Groningen/UMCG research database](#)

Citation for published version (APA):

Nietzel, T., Dudkina, N. V., Haase, C., Denolf, P., Semchonok, D. A., Boekema, E. J., ... Sunderhaus, S. (2013). The Native Structure and Composition of the Cruciferin Complex in *Brassica napus*. *The Journal of Biological Chemistry*, 288(4), 2238-2245. DOI: 10.1074/jbc.M112.356089

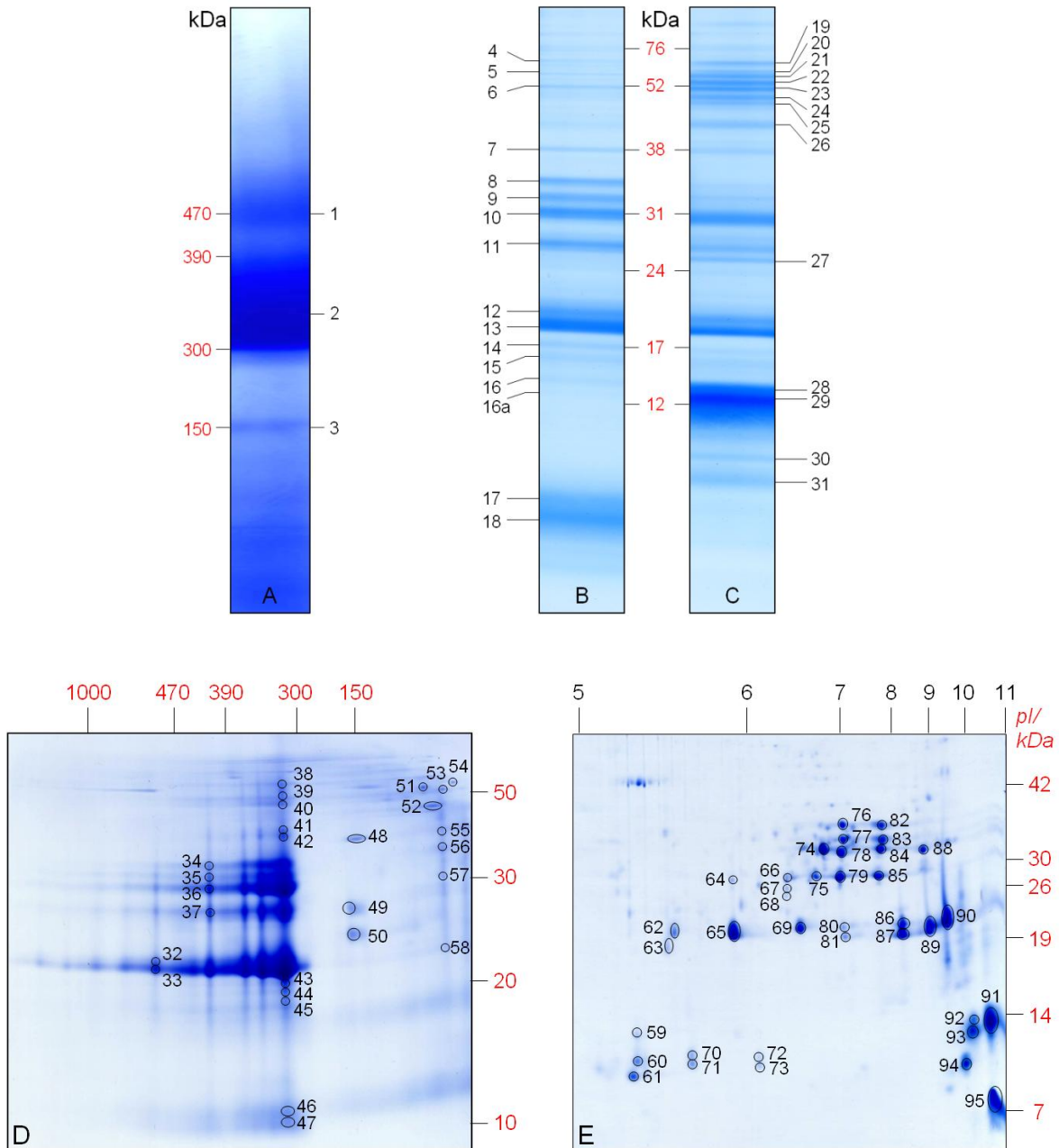
Copyright

Other than for strictly personal use, it is not permitted to download or to forward/distribute the text or part of it without the consent of the author(s) and/or copyright holder(s), unless the work is under an open content license (like Creative Commons).

Take-down policy

If you believe that this document breaches copyright please contact us providing details, and we will remove access to the work immediately and investigate your claim.

Downloaded from the University of Groningen/UMCG research database (Pure): <http://www.rug.nl/research/portal>. For technical reasons the number of authors shown on this cover page is limited to 10 maximum.



Supplementary Figure 2: Identification of Cruciferin subunits separated by 1D BN PAGE (A), 1D SDS PAGE with DTT (B), 1D SDS PAGE without DTT (C), 2D BN/SDS PAGE (D) and 2D IEF/SDS PAGE (E) via LC MS/MS. Spots and bands were picked from all gels, digested with trypsin and analyzed by mass spectrometry. The spot numbers (black) refer to those given in Supplementary Table 1. Molecular masses of standard proteins are given in kDa (red numbers). Isoelectric points are indicated above the IEF/SDS gel.

SUPPLEMENTARY TABLES

Supplementary Table 1: Identified proteins of the PSV fraction of *B. napus* mature seeds (from Supplementary Figure 2)

Spot No ^a	accession ^b	name	organism	MM (kDa) ^c	Mascot Score ^d	MP ^e	Sequence coverage (%)
1D BN PAGE							
1	P33525 (S)	Cruciferin CRU 1	<i>B. napus</i>	56.5 (470)	1056	17 (8 α 9 β)	31.8
	P33522 (S)	Cruciferin CRU 4	<i>B. napus</i>	51.6	440	8 (5 α 3 α)	20.6
	P11090 (S)	Cruciferin CRU 2/3	<i>B. napus</i>	54.0	376	6 (5 α 1 β)	13.5
	P33523 (S)	Cruciferin BnC1	<i>B. napus</i>	54.1	376	6 (5 α 1 β)	13.5
	P33524 (S)	Cruciferin BnC2	<i>B. napus</i>	54.5	340	5 (4 α 1 β)	12.9
	P01090 (S)	Napin-2	<i>B. napus</i>	20.5	162	5	23.6
	P80208 (S)	Napin-3	<i>B. napus</i>	14.5	162	5	33.0
	P09893 (S)	Napin embryo specific	<i>B. napus</i>	21.5	99	4	19.4
	P01091 (S)	Napin-1	<i>B. napus</i>	15.3	95	4	30.8
	P17333 (S)	Napin	<i>B. napus</i>	20.8	95	4	22.0
2	P33525 (S)	Cruciferin CRU 1	<i>B. napus</i>	56.5 (~390)	1079	17 (9 α 8 β)	26.5
	P11090 (S)	Cruciferin CRU 2/3	<i>B. napus</i>	54.0	414	8 (7 α 1 β)	20.5
	P33523 (S)	Cruciferin BnC1	<i>B. napus</i>	54.1	414	8 (7 α 1 β)	20.5
	P33522 (S)	Cruciferin CRU 4	<i>B. napus</i>	51.6	402	7 (4 α 3 α)	17.4
	P33524 (S)	Cruciferin BnC2	<i>B. napus</i>	54.5	225	4 (4 α)	13.5
3	P04796 (N)	Glyceraldehyde-3-phosphate dehydrogenase	<i>S. alba</i>	37.0 (~150)	633	19	72.2
	P80208 (S)	Napin-3	<i>B. napus</i>	14.5	609	6	46.4
	P17333 (S)	Napin	<i>B. napus</i>	20.8	504	5	31.7
	P09893 (S)	Napin embryo specific	<i>B. napus</i>	21.5	288	5	24.2
	P27740 (S)	Napin-B	<i>B. napus</i>	20.5	171	4	21.3
	P33525 (S)	Cruciferin CRU 1	<i>B. napus</i>	56.5	106	5 (2 α 3 β)	12.4
	At1g07920 (T)	Elongation factor 1-alpha	<i>A. thaliana</i>	49.8	75	2	4.2
	P11090 (S)	Cruciferin CRU 2/3	<i>B. napus</i>	54.0	63	2 (2 β)	7.2
	P33523 (S)	Cruciferin BnC1	<i>B. napus</i>	54.1	63	2 (2 β)	7.0
	P33524 (S)	Cruciferin BnC2	<i>B. napus</i>	54.5	63	2 (2 β)	7.0
1D SDS PAGE							
4		No result		(~65)			
5	P80208 (S)	Napin-3	<i>B. napus</i>	14.5 (~60)	45	2	20.8
	P17333 (S)	Napin	<i>B. napus</i>	20.8	45	2	14.0
6	P33525 (S)	Cruciferin CRU 1	<i>B. napus</i>	56.5 (~52)	238	2 (2 α)	4.1
	At1g07920 (T)	Elongation factor 1-alpha	<i>A. thaliana</i>	49.8	141	2	4.7
7	P33525 (S)	Cruciferin CRU 1	<i>B. napus</i>	56.5 (~38)	248	2 (2 α)	3.3

	ACS68202 (N)	glyceraldehyde-3-phosphate dehydrogenase	B. napus	37.1	105	3	10.4
8	P33525 (S)	Cruciferin CRU 1	B. napus	56.5 (~35)	1070	13 (13 α)	24.4
	P33523 (S)	Cruciferin BnC1	B. napus	54.1	139	4 (3 α 1 β)	11.8
9	P33525 (S)	Cruciferin CRU 1	B. napus	56.5 (~33)	934	14 (10 α 4 β)	26.5
	P33523 (S)	Cruciferin BnC1	B. napus	54.1	317	6 (6 α)	16.9
	P33522 (S)	Cruciferin CRU 4	B. napus	51.6	68	3 (3 α)	5.4
10	P33523 (S)	Cruciferin BnC1	B. napus	54.1 (~31)	1334	12 (12 α)	25.1
	P33524 (S)	Cruciferin BnC2	B. napus	54.5	845	8 (8 α)	16.1
	P33525 (S)	Cruciferin CRU 1	B. napus	56.5	554	9 (6 α 3 β)	22.0
	P33522 (S)	Cruciferin CRU 4	B. napus	51.6	289	5 (4 α 1 β)	14.6
11	P33522 (S)	Cruciferin CRU 4	B. napus	51.6 (~27)	861	10 (9 α 1 β)	23.9
	P33523 (S)	Cruciferin BnC1	B. napus	54.1	578	9 (8 α 1 β)	22.4
12	P33525 (S)	Cruciferin CRU 1	B. napus	56.5 (~20)	1308	16 (4 α 12 β)	38.5
	P33523 (S)	Cruciferin BnC1	B. napus	54.1	1299	13 (5 α 8 β)	31.6
	P33524 (S)	Cruciferin BnC2	B. napus	54.5	807	8 (1 α 7 β)	20.2
	P33522 (S)	Cruciferin CRU 4	B. napus	51.6	683	8 (1 α 7 β)	18.9
13	P33525 (S)	Cruciferin CRU 1	B. napus	56.5 (~19)	1558	15 (1 α 14 β)	27.5
	P33522 (S)	Cruciferin CRU 4	B. napus	51.6	1542	11 (11 β)	29.9
	P11090 (S)	Cruciferin CRU 2/3	B. napus	54.0	892	8 (2 α 6 β)	19.3
	P33523 (S)	Cruciferin BnC1	B. napus	54.1	892	8 (2 α 6 β)	19.3
	P33524 (S)	Cruciferin BnC2	B. napus	54.5	695	6 (1 α 5 β)	14.5
	P01091 (S)	Napin-1	B. napus	15.3	50	2	18.0
	P01090 (S)	Napin-2	B. napus	20.5	50	2	13.0
	P80208 (S)	Napin-3	B. napus	14.5	50	2	19.0
	P17333 (S)	Napin	B. napus	20.8	50	2	13.0
14	P33525 (S)	Cruciferin CRU 1	B. napus	56.5 (~17)	297	4 (4 α)	7.7
	P11090 (S)	Cruciferin CRU 2/3	B. napus	54.0	204	5 (4 α 1 β)	13.1
	P33523 (S)	Cruciferin BnC1	B. napus	54.1	204	5 (4 α 1 β)	13.1
	P33522 (S)	Cruciferin CRU 4	B. napus	51.6	172	4 (3 α 1 β)	13.5
	P80208 (S)	Napin-3	B. napus	14.5	140	3	32.0
	P17333 (S)	Napin	B. napus	20.8	140	3	22.0
	15	C3S7F1 (S)	Oleosin S2-2	B. napus	19.9 (~16)	338	6
P11090 (S)		Cruciferin CRU 2/3	B. napus	54.0	268	3 (3 α)	6.1
P33523 (S)		Cruciferin BnC1	B. napus	54.1	268	3 (3 α)	6.1
P33522 (S)		Cruciferin CRU 4	B. napus	51.6	231	3 (3 α)	6.2
P33525 (S)		Cruciferin CRU 1	B. napus	56.5	216	3 (3 α)	5.9
16		P33525 (S)	Cruciferin CRU 1	B. napus	56.5 (~14)	528	4 (4 α)
	P33522 (S)	Cruciferin CRU 4	B. napus	51.6	437	3 (3 α)	10.8
	P11090 (S)	Cruciferin CRU 2/3	B. napus	54.0	304	4 (4 α)	10.5

	P33523 (S) P09893 (S) P80208 (S)	Cruciferin BnC1 Napin embryo-specific Napin-3	B. napus B. napus B. napus	54.1 21.5 20.8	304 150 147	4 (4 α) 4 5	10.5 23.7 45.6
16a	P80208 (S) P17333 (S) P01090 (S) P11090 (S) P33523 (S) P09893 (S) P27740 (S) P33522 (S)	Napin-3 Napin Napin-2 Cruciferin CRU 2/3 Cruciferin BnC1 Napin embryo-specific Napin-B Cruciferin CRU 4	B. napus B. napus B. napus B. napus B. napus B. napus B. napus B. napus	14.5 (~12) 20.8 20.5 54.0 54.1 21.5 20.5 51.6	645 513 303 173 173 170 131 68	6 5 6 4 (4 α) 4 (4 α) 4 6 2 (2 α)	46.4 31.7 32.0 10.5 10.5 14.5 31.5 6.2
17	P80208 (S) P17333 (S) P09893 (S) P33525 (S)	Napin-3 Napin Napin embryo-specific Cruciferin CRU 1	B. napus B. napus B. napus B. napus	14.5 (~7) 20.8 21.5 56.5	414 414 238 45	3 3 4 2 (2 α)	32.0 22.0 17.2 5.9
18	P80208 (S) P33523 (S) P01090 (S) P27740 (S) P09893 (S) P33525 (S) P33522 (S)	Napin-3 Cruciferin BnC1 Napin-2 Napin-B Napin embryo-specific Cruciferin CRU 1 Cruciferin CRU 4	B. napus B. napus B. napus B. napus B. napus B. napus B. napus	14.5 (~5) 54.1 20.5 20.5 21.5 56.5 51.6	662 320 273 273 228 209 109	4 4 (4 α) 4 4 4 4 (4 α) 2 (2 α)	39.2 7.8 27.0 21.9 19.4 5.9 4.0
19	P33525 (S) P33523 (S) P33522 (S) P01091 (S) P01090 (S) P80208 (S) P17333 (S)	Cruciferin CRU 1 Cruciferin BnC1 Cruciferin CRU 4 Napin-1 Napin-2 Napin-3 Napin	B. napus B. napus B. napus B. napus B. napus B. napus B. napus	56.5 (~63) 54.1 51.6 15.3 20.5 14.5 20.8	1364 814 297 43 43 43 43	14 (4 α 10 β) 9 (9 α) 4 (4 α) 2 2 2 2	26.3 17.8 7.1 18.0 13.0 19.0 13.0
20	P33523 (S) P33525 (S) P33522 (S) P33524 (S)	Cruciferin BnC1 Cruciferin CRU 1 Cruciferin CRU 4 Cruciferin BnC2	B. napus B. napus B. napus B. napus	54.1 (~60) 56.5 51.6 54.5	1190 900 672 520	10 (9 α 1 β) 17 (6 α 11 β) 5 (4 α 1 β) 6 (5 α 1 β)	23.7 37.9 14.2 14.7
21	P33525 (S) P33523 (S) P33522 (S)	Cruciferin CRU 1 Cruciferin BnC1 Cruciferin CRU 4	B. napus B. napus B. napus	56.5 (~58) 54.1 51.6	1419 751 282	21 (8 α 13 β) 8 (8 α) 3 (3 α)	43.6 19.4 8.8
22	P33525 (S) P33523 (S) P33522 (S)	Cruciferin CRU 1 Cruciferin BnC1 Cruciferin CRU 4	B. napus B. napus B. napus	56.5 (~54) 54.1 51.6	2256 538 199	23 (8 α 15 β) 7 (7 α) 3 (3 α)	47.9 18.2 8.8

23	P33525 (S) P33523 (S) P33522 (S) P33524 (S)	Cruciferin CRU 1 Cruciferin BnC1 Cruciferin CRU 4 Cruciferin BnC2	B. napus B. napus B. napus B. napus	56.5 (~51) 54.1 51.6 54.5	2221 426 226 73	22 (9 α 13 β) 6 (6 α) 2 (2 α) 3 (2 α 1 β)	53.2 16.9 7.1 8.7
24	P33525 (S) P33523 (S) P33522 (S) P33524 (S)	Cruciferin CRU 1 Cruciferin BnC1 Cruciferin CRU 4 Cruciferin BnC2	B. napus B. napus B. napus B. napus	56.5 (~49) 54.1 51.6 54.5	1358 1210 686 493	18 (6 α 12 β) 15 (9 α 6 β) 8 (5 α 3 β) 8 (5 α 3 β)	40.1 37.8 20.2 20.2
25	P33522 (S) P33525 (S) P33523 (S) P33524 (S)	Cruciferin CRU 4 Cruciferin CRU 1 Cruciferin BnC1 Cruciferin BnC2	B. napus B. napus B. napus B. napus	51.6 (~48) 56.5 54.1 54.5	1161 1123 775 498	13 (7 α 6 β) 17 (8 α 9 β) 10 (8 α 2 β) 6 (3 α 3 β)	32.0 41.7 26.9 16.1
26	P33525 (S) P33523 (S) P33522 (S)	Cruciferin CRU 1 Cruciferin BnC1 Cruciferin CRU 4	B. napus B. napus B. napus	56.5 (~45) 54.1 51.6	347 100 49	11 (4 α 7 β) 5 (4 α 1 β) 2 (1 α 1 β)	21.8 12.9 5.6
27	P33522 (S) P33525 (S) P11090 (S) P33523 (S) P33524 (S) P80208 (S) P09893 (S)	Cruciferin CRU 4 Cruciferin CRU 1 Cruciferin CRU 2/3 Cruciferin BnC1 Cruciferin BnC2 Napin-3 Napin embryo-specific	B. napus B. napus B. napus B. napus B. napus B. napus B. napus	51.6 (~25) 56.5 54.0 54.1 54.5 14.5 21.5	762 505 334 334 334 238 65	9 (8 α 1 β) 10 (2 α 8 β) 5 (4 α 1 β) 5 (4 α 1 β) 5 (4 α 1 β) 3 3	23.2 19.6 11.3 11.3 11.3 45.6 14.0
28	P09893 (S) P80208 (S) P17333 (S) P27740 (S)	Napin embryo-specific Napin-3 Napin Napin-B	B. napus B. napus B. napus B. napus	21.5 (~14) 14.5 20.8 20.5	937 713 495 224	7 6 5 4	29.6 46.4 31.7 21.3
29	P80208 (S) P17333 (S) P33525 (S) P09893 (S) P27740 (S)	Napin-3 Napin Cruciferin CRU 1 Napin embryo-specific Napin-B	B. napus B. napus B. napus B. napus B. napus	14.5 (~12) 21.5 56.5 21.5 20.5	991 887 494 398 279	5 5 6 (6 α) 5 4	45.6 31.7 15.5 23.7 21.3
30	P80208 (S) P24565 (S)	Napin-3 Napin-1A	B. napus B. napus	14.5 (~9) 12.7	251 98	5 3	45.6 24.5
31	P24565 (S)	Napin-1A	B. napus	12.7 (~8)	55	2	19.1

2D BN/SDS PAGE

32	P33525 (S) P33524 (S)	Cruciferin CRU 1 Cruciferin BnC2	B. napus B. napus	56.5 (~19) 54.5	460 48	9 (2 α 7 β) 3 (1 α 2 β)	16.9 6.9
33	P33525 (S) P33522 (S)	Cruciferin CRU 1 Cruciferin CRU 4	B. napus B. napus	56.5 (~18) 51.6	1153 279	15 (2 α 13 β) 6 (1 α 5 β)	25.1 18.9

	P11090 (S) P33523 (S) P01091 (S) P01090 (S) P80208 (S) P17333 (S)	Cruciferin CRU 2/3 Cruciferin BnC1 Napin-1 Napin-2 Napin-3 Napin	B. napus B. napus B. napus B. napus B. napus B. napus	54.0 54.1 15.7 20.5 14.5 20.8	83 83 40 40 40 40	3 (2 α 1 β) 3 (2 α 1 β) 3 3 3 3	8.8 8.8 24.1 17.0 25.0 17.0
34	P33525 (S) P11090 (S) P33523 (S) P33522 (S)	Cruciferin CRU 1 Cruciferin CRU 2/3 Cruciferin BnC1 Cruciferin CRU 4	B. napus B. napus B. napus B. napus	56.5 (~35) 54.0 54.1 51.6	566 121 121 105	10 (6 α 4 β) 2 (2 α) 2 (2 α) 2 (1 α 1 β)	20.2 4.3 4.3 6.5
35	P33525 (S) P11090 (S) P33523 (S) P33522 (S)	Cruciferin CRU 1 Cruciferin CRU 2/3 Cruciferin BnC1 Cruciferin CRU 4	B. napus B. napus B. napus B. napus	56.5 (~33) 54.0 54.1 51.6	370 130 130 111	9 (6 α 3 β) 2 (2 α) 2 (2 α) 4 (3 α 1 β)	18.1 4.3 4.3 9.0
36	P33523 (S) P33525 (S) P33524 (S) P33522 (S)	Cruciferin BnC1 Cruciferin CRU 1 Cruciferin BnC2 Cruciferin CRU 4	B. napus B. napus B. napus B. napus	54.1 (~31) 56.5 54.5 51.6	653 623 516 326	12 (12 α) 9 (4 α 5 β) 8 (8 α) 6 (5 α 1 β)	21.6 18.9 17.7 15.3
37	P33522 (S) P11090 (S) P33523 (S) P33525 (S)	Cruciferin CRU 4 Cruciferin CRU 2/3 Cruciferin BnC1 Cruciferin CRU 1	B. napus B. napus B. napus B. napus	51.6 (~26) 54.0 54.1 56.5	643 336 336 223	10 (9 α 1 β) 5 (4 α 1 β) 5 (4 α 1 β) 6 (3 α 3 β)	18.3 12.1 12.1 13.9
38	P33525 (S) P33522 (S) P11090 (S) P33523 (S)	Cruciferin CRU 1 Cruciferin CRU 4 Cruciferin CRU 2/3 Cruciferin BnC1	B. napus B. napus B. napus B. napus	56.5 (~72) 51.6 54.0 54.1	441 320 264 264	8 (5 α 3 β) 5 (4 α 1 β) 9 (8 α 1 β) 9 (8 α 1 β)	18.1 11.6 16.8 16.8
39	P33525 (S) P33522 (S) P11090 (S) P33523 (S)	Cruciferin CRU 1 Cruciferin CRU 4 Cruciferin CRU 2/3 Cruciferin BnC1	B. napus B. napus B. napus B. napus	56.5 (~65) 51.6 54.0 54.1	586 399 345 345	6 (2 α 4 β) 5 (3 α 2 β) 3 (2 α 1 β) 3 (2 α 1 β)	13.8 10.8 7.8 7.8
40	P33522 (S) P33525 (S) P11090 (S) P33523 (S)	Cruciferin CRU 4 Cruciferin CRU 1 Cruciferin CRU 2/3 Cruciferin BnC1	B. napus B. napus B. napus B. napus	51.6 (~54) 56.5 54.0 54.1	548 503 342 342	4 (2 α 2 β) 9 (5 α 4 β) 6 (5 α 1 β) 6 (5 α 1 β)	9.9 20.0 10.2 10.2
41	P33525 (S) P33522 (S) P11090 (S) P33523 (S)	Cruciferin CRU 1 Cruciferin CRU 4 Cruciferin CRU 2/3 Cruciferin BnC1	B. napus B. napus B. napus B. napus	56.5 (~44) 51.6 54.0 54.1	1031 463 283 283	15 (7 α 8 β) 5 (3 α 2 β) 5 (4 α 1 β) 5 (4 α 1 β)	31.4 10.8 10.5 10.5
42	P33525 (S)	Cruciferin CRU 1	B. napus	56.5 (~40)	543	8 (4 α 4 β)	18.7

	P33522 (S)	Cruciferin CRU 4	B. napus	51.6	462	4 (2 α 2 β)	9.9
	P11090 (S)	Cruciferin CRU 2/3	B. napus	54.0	305	3 (1 α 2 β)	5.3
	P33523 (S)	Cruciferin BnC1	B. napus	54.1	305	3 (1 α 2 β)	5.3
	P33524 (S)	Cruciferin BnC2	B. napus	54.5	305	3 (1 α 2 β)	5.3
43	P33522 (S)	Cruciferin CRU 4	B. napus	51.6 (~17)	318	7 (5 α 2 β)	13.5
	P33525 (S)	Cruciferin CRU 1	B. napus	56.5	234	9 (4 α 5 β)	21.8
	P11090 (S)	Cruciferin CRU 2/3	B. napus	54.0	156	5 (3 α 2 β)	9.4
	P33523 (S)	Cruciferin BnC1	B. napus	54.1	156	5 (3 α 2 β)	9.4
	P33524 (S)	Cruciferin BnC2	B. napus	54.5	132	4 (2 α 2 β)	8.7
44	P11090 (S)	Cruciferin CRU 2/3	B. napus	54.0 (~16)	593	7 (6 α 1 β)	14.5
	P33523 (S)	Cruciferin BnC1	B. napus	54.1	593	7 (6 α 1 β)	14.5
	P33525 (S)	Cruciferin CRU 1	B. napus	56.5	527	7 (4 α 3 β)	14.5
	P33524 (S)	Cruciferin BnC2	B. napus	54.5	477	4 (3 α 1 β)	7.7
	P33522 (S)	Cruciferin CRU 4	B. napus	51.6	426	7 (5 α 2 β)	13.5
45	P11090 (S)	Cruciferin CRU 2/3	B. napus	54.0 (~15)	451	4 (3 α 1 β)	7.8
	P33523 (S)	Cruciferin BnC1	B. napus	54.1	451	4 (3 α 1 β)	7.8
	P33525 (S)	Cruciferin CRU 1	B. napus	56.5	440	7 (4 α 3 β)	14.9
	P33522 (S)	Cruciferin CRU 4	B. napus	51.6	198	6 (5 α 1 β)	11.8
46	P33525 (S)	Cruciferin CRU 1	B. napus	56.5 (~11)	415	4 (3 α 1 β)	8.8
	P33523 (S)	Cruciferin BnC1	B. napus	54.1	353	6 (6 α)	10.4
	P80208 (S)	Napin-3	B. napus	14.5	175	3	32.0
	P17333 (S)	Napin	B. napus	20.8	175	3	22.0
	P33522 (S)	Cruciferin CRU 4	B. napus	51.6	131	2 (2 α)	4.3
	P09893 (S)	Napin embryo specific	B. napus	21.5	112	2	14.5
	P27740 (S)	Napin-B	B. napus	20.6	92	3	20.2
	P01090 (S)	Napin-2	B. napus	20.5	91	3	21.9
47	P33525 (S)	Cruciferin CRU 1	B. napus	56.5 (~10)	335	4 (3 α 1 β)	8.8
	P33523 (S)	Cruciferin BnC1	B. napus	54.1	298	6 (6 α)	10.4
	P33522 (S)	Cruciferin CRU 4	B. napus	51.6	196	3 (3 α)	7.1
	P80208 (S)	Napin-3	B. napus	14.5	83	2	20.8
	P17333 (S)	Napin	B. napus	20.8	83	2	14.0
48	ACS68202 (N)	glyceraldehyde-3-phosphate dehydrogenase 1	B. napus	37.1 (~40)	796	16	38.6
49	At2g28490 (T)	Cupin family protein	A. thaliana	55.9 (~27)	287	3	7.2
50	At2g28490 (T)	Cupin family protein	A. thaliana	55.9 (~23)	478	4	6.8
51	AAC08048 (N)	Myrosinase binding protein	B. napus	99.4 (~70)	346	8	8.8
52		No result		(~54)			
53		No result		(~68)			
54	At1g21750 (T)	protein disulfide isomerase	A. thaliana	55.9 (~74)	118	4	7.2
55	AAC08049 (N)	Myrosinase binding protein	B. napus	67.3 (~44)	280	6	10.1

	ACS68202 (N)	glyceraldehyde-3-phosphate dehydrogenase 1	B. napus	37.1	110	4	12.0
	ACS68203 (N)	glyceraldehyde-3-phosphate dehydrogenase 2	B. napus	37.0	110	4	12.0
56		No result		(~39)			
57		No result		(~37)			
58	P33522 (S)	Cruciferin CRU 4	B. napus	51.6 (~21)	45	2 (1 α 1 β)	4.7

2D IEF/SDS PAGE

59	P33525 (S)	Cruciferin CRU 1	B. napus	56.5/7.6 (~13/5.4)	424	4 (4 α)	7.5
60	P33525 (S)	Cruciferin CRU 1	B. napus	56.5/7.6 (~10/5.4)	547	5 (5 α)	7.5
61	P33522 (S)	Cruciferin CRU 4	B. napus	51.6/7.7 (~9/5.3)	103	4 (4 α)	8.2
62	P11090 (S)	Cruciferin 2/3	B. napus	54.0/6.8 (~19/5.6)	858	6 (6 β)	13.7
	P33523 (S)	Cruciferin BnC1	B. napus	54.1/6.8	858	6 (6 β)	13.7
	P33524 (S)	Cruciferin BnC2	B. napus	54.5/8.7	767	4 (4 β)	11.9
63		No result		(~18/5.5)			
64	P11090 (S)	Cruciferin 2/3	B. napus	54.0/6.8 (~26/5.9)	226	4 (1 α 3 β)	14.8
	P33523 (S)	Cruciferin BnC1	B. napus	54.1/6.8	226	4 (1 α 3 β)	14.8
65	P11090 (S)	Cruciferin 2/3	B. napus	54.0/6.8 (~19/5.9)	1008	6 (6 β)	14.5
	P33523 (S)	Cruciferin BnC1	B. napus	54.1/6.8	1008	6 (6 β)	14.5
69	P11090 (S)	Cruciferin 2/3	B. napus	54.0/6.8 (~20/6.6)	1276	7 (7 β)	18.9
	P33523 (S)	Cruciferin BnC1	B. napus	54.1/6.8	1276	7 (7 β)	18.9
70	P33523 (S)	Cruciferin BnC1	B. napus	54.1/6.8 (~11/5.6)	473	7 (7 α)	11.4
	P33522 (S)	Cruciferin CRU 4	B. napus	51.6/7.7	134	2 (1 α 1 β)	7.7
71	P11090 (S)	Cruciferin 2/3	B. napus	54.0/6.8 (~10/5.6)	81	4 (4 α)	5.5
	P33523 (S)	Cruciferin BnC1	B. napus	54.1/6.8	81	4 (4 α)	5.5
72	P33523 (S)	Cruciferin BnC1	B. napus	54.1/6.8 (~11/6.2)	356	6 (6 α)	10.0
	P33524 (S)	Cruciferin BnC2	B. napus	54.5/8.7	222	4 (4 α)	6.5
73	P11090 (S)	Cruciferin 2/3	B. napus	54.0/6.8 (~10/6.2)	50	3 (3 α)	4.1
	P33523 (S)	Cruciferin BnC1	B. napus	54.1/6.8	50	3 (3 α)	4.1
74	P33523 (S)	Cruciferin BnC1	B. napus	54.1/6.8 (~32/6.8)	735	11 (11 α)	21.6
	P33525 (S)	Cruciferin CRU 1	B. napus	56.5/7.6	170	3 (3 α)	4.9
75	P33522 (S)	Cruciferin CRU 4	B. napus	51.6/7.7 (~27/6.7)	215	4 (4 α)	8.0
76	P33525 (S)	Cruciferin CRU 1	B. napus	56.5/7.6 (~36/7.1)	904	11 (11 α)	25.0
77	P33525 (S)	Cruciferin CRU 1	B. napus	56.5/7.6 (~33/7.1)	998	10 (10 α)	29.5
78	P33523 (S)	Cruciferin BnC1	B. napus	54.1/6.8 (~31/7.1)	698	10 (10 α)	21.0
	P33525 (S)	Cruciferin CRU 1	B. napus	56.5/7.6	464	8 (8 α)	18.9
	P33524 (S)	Cruciferin BnC2	B. napus	54.5/8.7	252	3 (3 α)	5.4
79	P11090 (S)	Cruciferin 2/3	B. napus	54.0/6.8 (~27/7.0)	491	2 (2 β)	8.4
	P33523 (S)	Cruciferin BnC1	B. napus	54.1/6.8	491	2 (2 β)	8.4
	P33522 (S)	Cruciferin CRU 4	B. napus	51.6/7.7	382	9 (8 α 1 β)	24.7
80	P09893 (S)	Napin embryo-specific	B. napus	21.0/7.6 (~20/7.1)	1332	14	45.7

	P33525 (S)	Cruciferin CRU 1	B. napus	56.5/7.6	747	11 (11 β)	21.2
	P33524 (S)	Cruciferin BnC2	B. napus	54.5/8.7	201	3 (3 β)	8.8
	P33522 (S)	Cruciferin CRU 4	B. napus	51.6/7.7	115	5 (5 β)	14.2
81	P27740 (S)	Napin-B	B. napus	20.1/7.7 (~19/7.1)	607	14	48.9
	P01090 (S)	Napin-2	B. napus	20.1/6.4	527	12	40.4
	P33524 (S)	Cruciferin BnC2	B. napus	54.5/8.7	329	6 (6 β)	12.7
	P01091 (S)	Napin-1	B. napus	15.3/8.3	299	10	38.3
	P17333 (S)	Napin	B. napus	20.3/6.9	299	10	28.0
	P33522 (S)	Cruciferin CRU 4	B. napus	51.6/7.7	259	7 (7 β)	17.6
	P33525 (S)	Cruciferin CRU 1	B. napus	56.5/7.6	181	5 (5 β)	11.0
	P11090 (S)	Cruciferin CRU 2/3	B. napus	54.0/6.8	151	2 (2 β)	4.3
	P33523 (S)	Cruciferin BnC1	B. napus	54.1/6.8	151	2 (2 β)	4.3
82	P33525 (S)	Cruciferin CRU 1	B. napus	56.5/7.6 (~36/7.8)	645	10 (10 α)	21.6
83	P33525 (S)	Cruciferin CRU 1	B. napus	56.5/7.6 (~33/7.8)	2014	11 (11 α)	31.4
84	P33523 (S)	Cruciferin BnC1	B. napus	54.1/6.8 (~32/7.8)	621	11 (11 α)	21.6
	P33524 (S)	Cruciferin BnC2	B. napus	54.5/8.7	236	3 (3 α)	5.4
	P33525 (S)	Cruciferin CRU 1	B. napus	56.5/7.6	211	7 (6 α 1 β)	21.4
85	P33522 (S)	Cruciferin CRU 4	B. napus	51.6/7.7 (~27/7.8)	954	7 (7 α)	21.1
	P11090 (S)	Cruciferin CRU 2/3	B. napus	54.0/6.8	287	4 (4 α)	8.8
	P33523 (S)	Cruciferin BnC1	B. napus	54.1/6.8	287	4 (4 α)	8.8
	P33525 (S)	Cruciferin CRU 1	B. napus	56.5/7.6	119	2 (2 α)	4.9
86	P33525 (S)	Cruciferin CRU 1	B. napus	56.5/7.6 (~21/8.3)	731	9 (9 β)	17.9
	P33522 (S)	Cruciferin CRU 4	B. napus	51.6/7.7	317	7 (7 β)	18.3
87	P33522 (S)	Cruciferin CRU 4	B. napus	51.6/7.7 (~19/8.3)	374	6 (6 β)	16.8
	P33525 (S)	Cruciferin CRU 1	B. napus	56.5/7.6	57	5 (5 β)	10.2
	P33524 (S)	Cruciferin BnC2	B. napus	54.5/8.7	48	2 (2 β)	4.8
88	P33524 (S)	Cruciferin BnC2	B. napus	54.5/8.7 (~32/8.8)	299	7 (7 α)	14.3
	P33523 (S)	Cruciferin BnC1	B. napus	54.1/6.8	152	7 (7 α)	5.4
89	P33525 (S)	Cruciferin CRU 1	B. napus	56.5/7.6 (~20/8.9)	1684	13 (13 β)	21.2
	P33522 (S)	Cruciferin CRU 4	B. napus	51.6/7.7	808	10 (10 β)	22.8
	P11090 (S)	Cruciferin 2/3	B. napus	54.0/6.8	86	2 (1 α 1 β)	4.5
	P33523 (S)	Cruciferin BnC1	B. napus	54.1/6.8	86	2 (1 α 1 β)	4.5
	P33524 (S)	Cruciferin BnC2	B. napus	54.5/8.7	59	2 (2 β)	4.8
90	P33525 (S)	Cruciferin CRU 1	B. napus	56.5/7.6 (~21/9.5)	2159	14 (1 α 13 β)	23.6
	P33522 (S)	Cruciferin CRU 4	B. napus	51.6/7.7	174	2 (2 β)	5.4
91	P09893 (S)	Napin embryo-specific	B. napus	21.0/7.6 (~14/10.8)	852	4	14.5
	P17333 (S)	Napin	B. napus	20.3/6.9	635	3	16.7
	P80208 (S)	Napin-3	B. napus	14.0/9.7	635	4	28.8
	P01090 (S)	Napin-2	B. napus	20.1/6.4	107	4	14.0

	P27740 (S)	Napin-B	B. napus	20.1/7.7	107	4	14.0
92	P80208 (S)	Napin-3	B. napus	14.0/9.7 (~14/10.2)	588	3	32.0
	P17333 (S)	Napin	B. napus	20.3/6.9	588	3	22.0
	P27740 (S)	Napin-B	B. napus	20.1/7.7	144	2	11.8
	P09893 (S)	Napin embryo-specific	B. napus	21.0/7.6	134	3	14.5
93	P80208 (S)	Napin-3	B. napus	14.0/9.7 (~13/10.2)	806	3	36.8
	P01090 (S)	Napin-2	B. napus	20.1/6.4	412	4	21.9
	P27740 (S)	Napin-B	B. napus	20.1/7.7	246	4	20.2
	P09893 (S)	Napin embryo-specific	B. napus	21.0/7.6	128	2	18.8
94	P24565 (S)	Napin 1A	B. napus	12.7/8.7 (~10/10.0)	790	5	42.7
	P80208 (S)	Napin-3	B. napus	14.0/9.7	201	2	24.0
	P17333 (S)	Napin	B. napus	20.3/6.9	201	2	16.0
95	P09893 (S)	Napin embryo-specific	B. napus	21.0/7.6 (~8/10.8)	227	3	14.5
	P01091 (S)	Napin-1	B. napus	15.3/8.3	146	4	21.1
	P17333 (S)	Napin	B. napus	20.3/6.9	146	4	15.0
	P27740 (S)	Napin-B	B. napus	20.1/7.7	146	4	15.0

^a Spot numbers in accordance with Supplementary Figure 2.

^b Accession numbers as given by SwissProt (S) (<http://www.uniprot.org>), NCBI (N) (<http://www.ncbi.nlm.nih.gov/protein>) and TAIR (T) (<http://www.Arabidopsis.org/>).

^c Calculated molecular masses of the identified proteins as deduced from the corresponding genes. Additional information is given in this column as follows: Section 1D BN PAGE: apparent molecular masses of the protein complexes on gels (in brackets); Section 1D SDS PAGE: apparent molecular masses of the proteins on gels (in brackets). Note: apparent molecular masses differ substantially from calculated molecular masses because the Cruciferin precursor proteins (~50 kDa) are cleaved into the Cruciferin α (~30 kDa) and β (~20 kDa) chains during protein maturation; Section 2D BN/SDS PAGE: apparent molecular masses of the proteins on gels (in brackets). Note: apparent molecular masses differ substantially from calculated molecular masses as discussed above; Section 2D IEF/SDS PAGE: calculated molecular masses and pI from databases, apparent molecular masses and pI on gels (in brackets). Note: apparent molecular masses and pIs differ substantially from calculated masses as discussed above.

^d Probability score for the protein identifications based on MS/MS analysis and MASCOT search.

^e Number of unique matching peptides and number of unique peptides matching to the α or β polypeptide chain (in brackets).