

University of Groningen

Monoclinic phase in the relaxor-based piezoelectric/ferroelectric $\text{Pb}(\text{Mg}_{1/3}\text{Nb}_{2/3})\text{O}_3\text{-PbTiO}_3$ system

Ye, Z.-G.; Noheda, Beatriz; Dong, M.; Cox, D.; Shirane, G.

Published in:
Physical Review B

DOI:
[10.1103/PhysRevB.64.184114](https://doi.org/10.1103/PhysRevB.64.184114)

IMPORTANT NOTE: You are advised to consult the publisher's version (publisher's PDF) if you wish to cite from it. Please check the document version below.

Document Version
Publisher's PDF, also known as Version of record

Publication date:
2001

[Link to publication in University of Groningen/UMCG research database](#)

Citation for published version (APA):

Ye, Z-G., Noheda, B., Dong, M., Cox, D., & Shirane, G. (2001). Monoclinic phase in the relaxor-based piezoelectric/ferroelectric $\text{Pb}(\text{Mg}_{1/3}\text{Nb}_{2/3})\text{O}_3\text{-PbTiO}_3$ system. *Physical Review B*, 64(18), [184114]. DOI: 10.1103/PhysRevB.64.184114

Copyright

Other than for strictly personal use, it is not permitted to download or to forward/distribute the text or part of it without the consent of the author(s) and/or copyright holder(s), unless the work is under an open content license (like Creative Commons).

Take-down policy

If you believe that this document breaches copyright please contact us providing details, and we will remove access to the work immediately and investigate your claim.

Downloaded from the University of Groningen/UMCG research database (Pure): <http://www.rug.nl/research/portal>. For technical reasons the number of authors shown on this cover page is limited to 10 maximum.

Monoclinic phase in the relaxor-based piezoelectric/ferroelectric $\text{Pb}(\text{Mg}_{1/3}\text{Nb}_{2/3})\text{O}_3\text{-PbTiO}_3$ system

Z.-G. Ye,¹ B. Noheda,² M. Dong,¹ D. Cox,² and G. Shirane²¹Department of Chemistry, Simon Fraser University, Burnaby, BC, Canada V5A 1S6²Physics Department, Brookhaven National Laboratory, Upton, New York 11973-500

(Received 12 June 2001; published 24 October 2001)

A ferroelectric monoclinic phase of space group Cm (M_A type) has been discovered in $0.65\text{Pb}(\text{Mg}_{1/3}\text{Nb}_{2/3})\text{O}_3\text{-}0.35\text{PbTiO}_3$ by means of high-resolution synchrotron x-ray diffraction. It appears at room temperature in a single crystal previously poled under an electric field of 43 kV/cm applied along the pseudocubic [001] direction, in the region of the phase diagram around the morphotropic phase boundary between the rhombohedral ($R3m$) and the tetragonal ($P4mm$) phases. The monoclinic phase has lattice parameters $a=5.692\text{ \AA}$, $b=5.679\text{ \AA}$, $c=4.050\text{ \AA}$, and $\beta=90.15^\circ$, with the b_m axis oriented along the pseudocubic [110] direction. It is similar to the monoclinic phase observed in $\text{PbZr}_{1-x}\text{Ti}_x\text{O}_3$, but different from that recently found in $\text{Pb}(\text{Zn}_{1/3}\text{Nb}_{2/3})\text{O}_3\text{-PbTiO}_3$, which is of space group Pm (M_C type).

DOI: 10.1103/PhysRevB.64.184114

PACS number(s): 77.84.Bw, 61.10.Nz

I. INTRODUCTION

The complex perovskite $\text{Pb}(\text{Mg}_{1/3}\text{Nb}_{2/3})\text{O}_3$ (PMN) exhibits typical relaxor-type ferroelectric properties which have been intensively studied for both fundamental and practical reasons.¹⁻³ The relaxor state is characterized by the frustration of local polarizations which prevents long-range ferroelectric order from developing completely. Although the local symmetry of the polar domains is rhombohedral, the macroscopic symmetry of PMN remains cubic below the temperature of maximum permittivity. A ferroelectric phase can be induced either by application of an electric field along $[111]_{\text{cub}}$,⁴ or by partial substitution of Ti^{4+} for the complex $(\text{Mg}_{1/3}\text{Nb}_{2/3})^{4+}$ ions.⁵ In both cases, the micropolar domains transform into macrodomains with cubic-to-rhombohedral symmetry breaking.^{4,6} With Ti substitution, a complete solid solution forms between PMN and PbTiO_3 , $(1-x)\text{PMN}-x\text{PT}$ (PMN-PT), with a morphotropic phase boundary (MPB) located at $x\approx 0.35$, which has hitherto been believed to represent the frontier between the rhombohedral (relaxor side) and tetragonal (ferroelectric side) phases,⁵ as illustrated in Fig. 1.

Single crystals of PMN-PT and other relaxor-PT solid solutions, namely, $\text{Pb}(\text{Zn}_{1/3}\text{Nb}_{2/3})\text{O}_3\text{-PT}$ (PZN-PT), with compositions near the respective MPB's, have been reported to exhibit very high piezoelectric coefficients ($d_{33} > 2500\text{ pC/N}$), extremely large piezoelectric strains ($>1.7\%$), and very high electromechanical coupling factors ($k_{33} > 92\%$).⁷⁻¹¹ Such excellent properties point to a potential revolution in electromechanical transduction for a broad range of applications. From the crystal chemistry viewpoint, the strong piezoelectric response of those materials is associated with the MPB, and very recently intensive theoretical and experimental research has been undertaken in order to understand the origin of these enhanced piezoelectric properties. The experimental breakthroughs have been achieved by the discovery of ferroelectric monoclinic and orthorhombic phases by high-resolution synchrotron x-ray diffraction. In $\text{PbZr}_{0.52}\text{Ti}_{0.48}\text{O}_3$ (PZT48), a monoclinic phase with space group Cm (of M_A type, in the Vanderbilt and Cohen

notation¹²) was found below room temperature. In such a phase, the monoclinic b axis lies along pseudocubic $[1\bar{1}0]$, and the polarization is in the $(1\bar{1}0)$ plane.^{13,14} In the PZN-PT system, an orthorhombic phase was found to exist between the rhombohedral and tetragonal phases at around 10%PT.¹⁵ Upon application of an electric field along $[001]_{\text{cub}}$, evidence of polarization rotation via a monoclinic phase has been shown for PZN-8%PT,¹⁶ which is in agreement with the theoretical considerations by first-principles calculations for the PZT case.^{17,18}

So far, several pictures of the phase states near the MPB of the PMN-PT system have been proposed. Shroud *et al.*⁵ initially suggested that the rhombohedral $R3m$ phase of smaller Ti concentration and the tetragonal $P4mm$ phase of higher Ti content, were separated by a fairly sharp phase boundary at 35%PT. The authors of Ref. 19 reported a large composition range around the MPB in which the rhombohedral and tetragonal phases coexist. Optical domain studies showed that the $R3m$ and $P4mm$ phases may coexist at room temperature, with transformation from the $R3m$ into the $P4mm$ phase taking place over a wide temperature interval.⁶ In the present paper, we report the results of a high-resolution synchrotron x-ray diffraction study of $0.65\text{Pb}(\text{Mg}_{1/3}\text{Nb}_{2/3})\text{O}_3\text{-}0.35\text{PbTiO}_3$ (PMN-35%PT) single

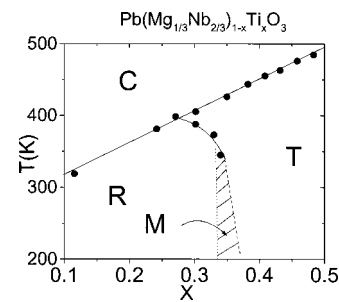


FIG. 1. Phase diagram of the PMN-PT solid solution system. Solid circles and related phase boundaries are adapted from Ref. 5. C, R, and T refer to cubic, rhombohedral, and tetragonal regions, respectively. The diagonally shaded area represents the monoclinic M phase region, updated based on the present work.

crystals, showing unambiguous evidence of a monoclinic phase, which is stable between the rhombohedral and tetragonal phases near the MPB.

II. EXPERIMENT

Single crystals of PMN-35%PT were grown from a high-temperature solution using an optimum flux composition (50 wt % PMNT+49 wt % PbO+1 wt % B₂O₃).²⁰ Two platelets, No. 1, 65 μm thick, and No. 2, 165 μm thick, were cut parallel to the reference (001)_{cub} plane, and polished with fine diamond paste (down to 1 μm). The (001)_{cub} faces were covered with Ag paste, Au wires were attached, and platelets Nos. 1 and 2 were poled under electric fields of 43 and 5 kV/cm, respectively, which were applied along [001]_{cub} at 200 °C (above T_C) and maintained while cooling down to room temperature. The samples were then short circuited for 30 min before the electrodes were removed. Synchrotron x-ray diffraction experiments were performed at the Brookhaven National Synchrotron Light Source (NSLS). The PMN-35% PT crystal No. 1 poled at 43 kV/cm was studied at beam line X22A with 30-keV x-rays from the third-order reflection of a Si(111) monochromator. The measurements were made on a Huber four-circle diffractometer equipped with a Si(111) analyzer. X-ray powder diffraction was also performed on PMN-35%PT at beam line X7A with 18-keV x-rays from a Si(111) double-crystal monochromator ($\lambda \approx 0.7 \text{ \AA}$.) PMN-PT crystal No. 2, previously poled at 5 kV/cm was crushed and sieved to produce a powder sample with large crystallites (38–44 μm) that we call a properly arranged single crystal (PASC), in order to obtain sharp powder lines free from sample-broadening effects. A 0.2-mm capillary loaded with the specimen was mounted on a Huber diffractometer equipped with a Ge(220) analyzer. The resulting instrumental resolution is about 0.005° on the 2θ scale.

III. RESULTS AND DISCUSSION

Figure 2 gives three examples of the contour maps observed in different cubic zones around the (002), (300), and (330) reflection peaks for the PMN-35%PT crystal No. 1. For these experiments, the Bragg indices $H=K=L=1$ were defined to correspond to the cubic lattice parameters $a=b=c=4.016 \text{ \AA}$ for all the cases.

To interpret the diffraction patterns observed in Fig. 2 and to illustrate the structure of the PMN-35%PT, we need to consider the possible domain configurations based on group-subgroup symmetry relationship. The high-temperature prototype phase has $Pm\bar{3}m$ space group symmetry. The phase transitions into a rhombohedral $R\bar{3}m$ phase, or a monoclinic m phase would normally result in eight or 24 (fully) ferroelectric or (partially) ferroelastic domain states, respectively.²¹ The domain structures are therefore very complicated, especially for the monoclinic phase. However, a much-simplified situation is produced by electric-field poling, which constrains the c axis to lie along the pseudocubic [001] direction, analogous to the situation previously discussed for PZN-8%PT.¹⁶ The monoclinic domain configuration now consists of two b domains related by a 90° rotation

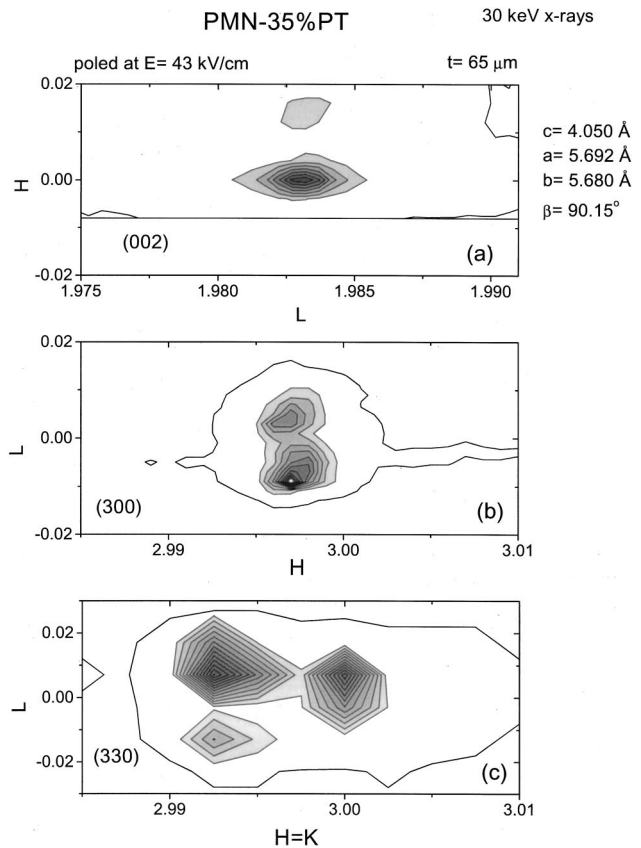


FIG. 2. Contour maps observed around (002), (300), and (330) reflection peaks in the cubic HOL (a), HOL (b), and HHL (c) zones, respectively, for a poled PMN-35%PT crystal. $H=K=L=1$ has been defined to correspond to $d=4.016 \text{ \AA}$ for all the cases.

around the c axis, each of which contains two domains.

The contour map of Fig. 2(a) shows a single d spacing in the HOL zone measured around the (002) reflection, which gives the parameter $c=4.050 \text{ \AA}$. The fact that a single d spacing was observed in this region demonstrates that the c axis is indeed fixed along the poling field direction of pseudocubic [001], and that the poled state remains stable after the field is removed. The very weak extra peaks observed in the transverse direction may correspond to slightly misaligned regions close to the surface, since they were not observed with high-energy x-rays at 67 keV. Figure 2(b) is the contour map obtained around the pseudocubic (300) peak in the HOL zone, and shows a symmetrical splitting along the transverse L direction. This splitting can be attributed to the two a domains, but it is in sharp contrast to the three peaks observed for the (200) reflection from PZN-8%PT,¹⁵ which has monoclinic symmetry of type M_C (in the Vanderbilt-Cohen notation¹²). On the other hand, the contour map around the pseudocubic (330) reflection shown in Fig. 2(c) is seen to contain three peaks, and in conjunction with Fig. 2(b) provides the signature of a monoclinic structure of M_A type with a_m and b_m directed along pseudocubic $[\bar{1}\bar{1}0]$ and $[1\bar{1}0]$. The split peak is located at $H=K=2.993$ and the single peak at $H=K=3.000$, corresponding to lattice parameters $a_m=5.692 \text{ \AA}$ and $b_m=5.679 \text{ \AA}$. The transverse separa-

PMN-35%PT

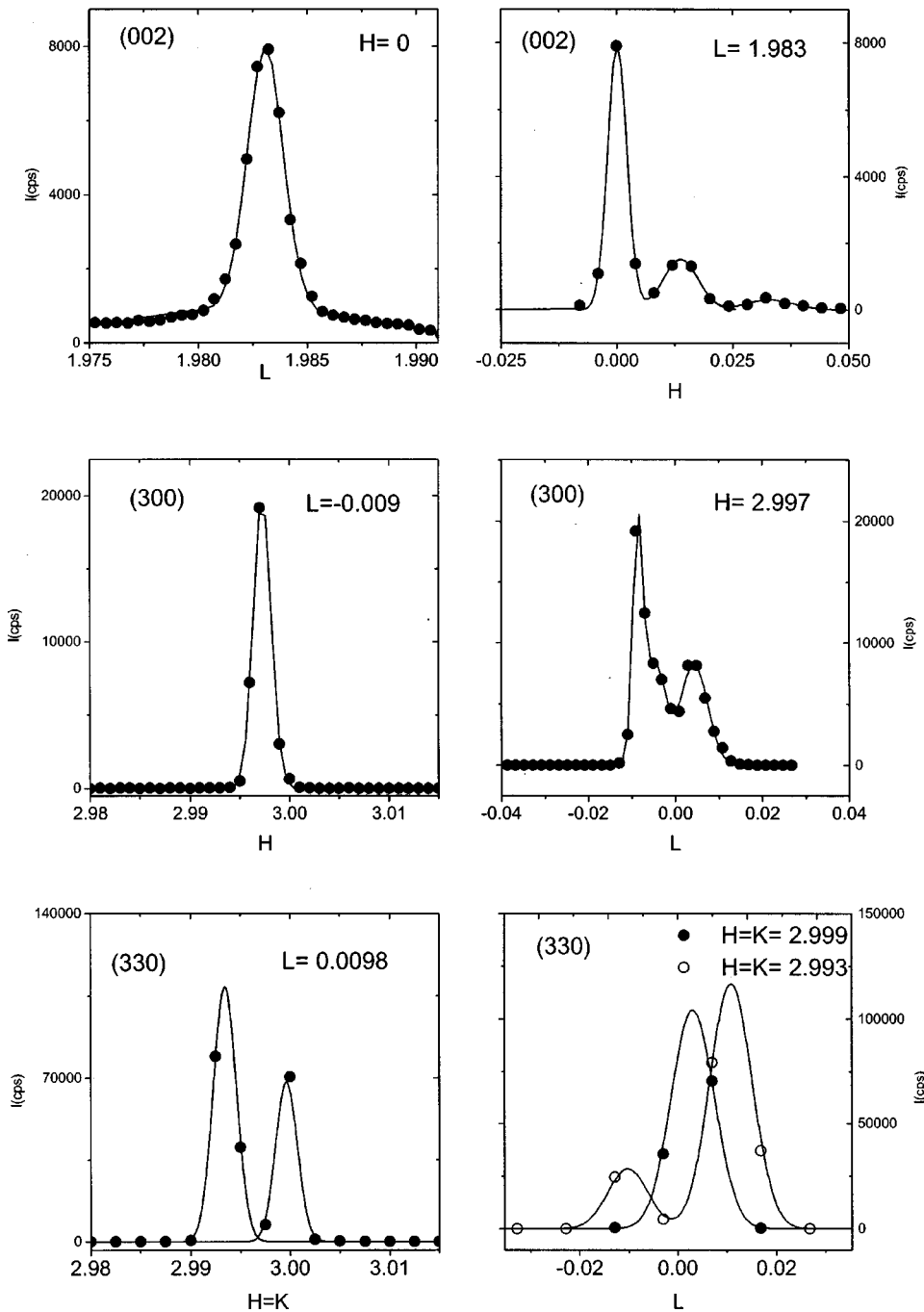


FIG. 3. Longitudinal and transverse linear scans for each of the (002), (300), and (330) reflections in Fig. 2. The lines are fits to Gaussian profiles.

tion of the split peaks is $L=0.022$, yielding a monoclinic angle $\beta=90.15^\circ$. The projection of the monoclinic angle ($\beta' \approx \beta\sqrt{2}$) can also be deduced independently from the splitting of the (300) peak in Fig. 2(b), namely, $L=0.012$, which yields a similar value of 90.16° . Finally, we note that although a rhombohedral domain structure could also give qualitatively similar features, such a structure can immediately be excluded, since the requirements of rhombohedral symmetry would impose constraints on the lattice parameters [e.g., $c_m^2 = (a_m^2 + b_m^2)/4$] which are clearly not satisfied. Thus we conclude that a monoclinic phase of M_A type has been

unambiguously shown to exist in the PMN-35%PT crystal. Figure 3 shows longitudinal and transverse linear scans for each of the (002), (300), and (330) reflections in Fig. 2. The lines are fits to Gaussian profiles. These scans confirm the monoclinic symmetry and lattice parameters deduced above.

We have also studied the weakly poled ($E < 5$ kV/cm) PMN-35%PT crystal (No. 2) in the form of crushed (PASC) powders by x-ray powder diffraction at X7A. Figure 4 shows the sharp powder lines from a PASC sample with a grain size between 38 and 44 μm . Only a single peak was observed for the $(100)_{\text{cub}}$ reflection, while both $(110)_{\text{cub}}$ and $(111)_{\text{cub}}$ re-

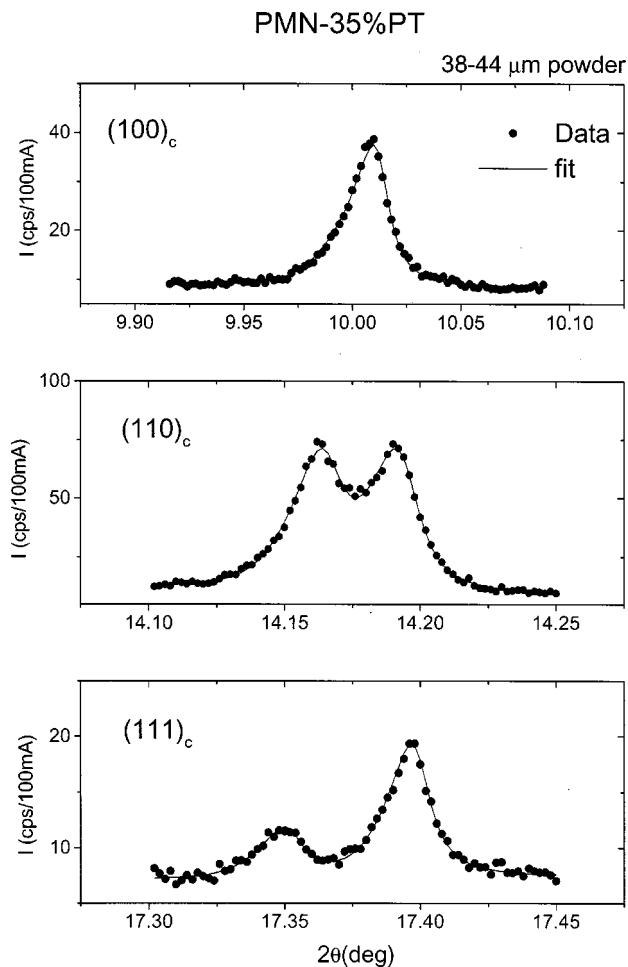


FIG. 4. $(100)_c$, $(110)_c$, and $(111)_c$ reflections obtained from powder diffraction of a properly arranged single crystal (PASC) sample made by carefully crushing a weakly poled ($E < 5$ kV/cm) PMN-35%PT crystal.

reflections showed split doublets. These patterns can be clearly indexed as a single rhombohedral R phase with $a = 4.023$ Å and $\alpha = 89.88^\circ$. Therefore, unpoled or weakly poled PMN-35%PT samples show an average rhombohedral phase, consistent with the reported MPB phase diagram.⁵

IV. CONCLUSIONS

A monoclinic phase of space group Cm (M_A type) was discovered in a PMN-35%PT crystal at room temperature by

means of high-resolution synchrotron x-ray diffraction. This M_A phase has its monoclinic a_m and b_m axes oriented along the pseudocubic $[1\bar{1}0]$ and $[110]$ directions, respectively, with the c_m axis along the pseudocubic $[001]$ direction. The unit-cell parameters are found to be $a_m (\approx a_c\sqrt{2}) = 5.692$ Å, $b_m (\approx a_c\sqrt{2}) = 5.679$ Å, $c_m (\approx a_c) = 4.050$ Å, and $\beta = 90.15^\circ$. This monoclinic phase exhibits the same crystallographic features as the one reported for $\text{PbZr}_{1-x}\text{Ti}_x\text{O}_3$ (i.e., a doubled cell rotated by 45° around the c axis with respect to the tetragonal unit cell),¹³ but is different from the M_C -type monoclinic phase (space group Pm) recently reported in PZN-8%PT, where the monoclinic b_m axis lies along $[0\bar{1}0]_{\text{cub}}$.¹⁵

The monoclinic phase appears at room temperature in a PMN-35%PT crystal previously poled under an electric field of 43 kV/cm applied along the $[001]_{\text{cub}}$ direction. On the other hand, unpoled and weakly poled PMN-35%PT samples exhibit an average rhombohedral symmetry. Although poling at high field along the $[001]_{\text{cub}}$ direction may be necessary in order to produce a long-range monoclinic phase for the composition, this point is not yet fully settled, and we hope to clarify it in future experiments. The existence of the monoclinic phase in PMN-35%PT allows us to construct an updated phase diagram for the PMN-PT solid solution system, in which a narrow monoclinic phase region exists between the rhombohedral $R3m$ and tetragonal $P4mm$ phases at low temperatures, as indicated by the dashed area in Fig. 1. More extended work is underway in order to provide a better understanding of the nature of the MPB and the origin of the outstanding piezoelectric performance of PMN-PT crystals, and will be reported elsewhere.

After the submission of this paper, two important papers have appeared: Xu *et al.*²² reported the observation of monoclinic domains by polarized light microscopy, and Lu *et al.*²³ showed the existence of an orthorhombic phase in 0.67PMN-0.33PT crystals.

ACKNOWLEDGMENTS

This work was supported by ONR Grant No. N00014-99-1-0738 and by the U.S. DOE under Contract No. DE-AC02-98CH10886. We thank John Hill, Ben Ocko, and Zhong Zhong for very useful discussions.

¹L. E. Cross, *Ferroelectrics* **76**, 241 (1987).

²L. E. Cross, *Ferroelectrics* **151**, 305 (1994).

³Z.-G. Ye, *Key Eng. Mater.* **155-156**, 81 (1998).

⁴Z.-G. Ye and H. Schmid, *Ferroelectrics* **145**, 83 (1993).

⁵T. R. Shrout, Z. P. Chang, N. Kim, and S. Markgraf, *Ferroelectr. Lett. Sect.* **12**, 63 (1990).

⁶Z.-G. Ye and M. Dong, *J. Appl. Phys.* **87**, 2312 (2000).

⁷S.-E. Park and T. R. Shrout, *J. Appl. Phys.* **82**, 1804 (1997).

⁸S.-E. Park and T. R. Shrout, *Mater. Res. Innovations* **1**, 20 (1997).

⁹K. Harada, S. Shimanuki, T. Kobayashi, S. Saitoh, and Y. Yamashita, *Key Eng. Mater.* **157-158**, 95 (1999).

¹⁰T. Kobayashi, S. Shimanuki, S. Saitoh, and Y. Yamashita, *Jpn. J. Appl. Phys.* **36**, 6035 (1997).

¹¹J. Kuwata, K. Uchino, and S. Nomura, *Jpn. J. Appl. Phys.* **21**, 1298 (1982).

¹²D. Vanderbilt and M. H. Cohen, *Phys. Rev. B* **63**, 094108 (2001).

- ¹³B. Noheda, D. E. Cox, G. Shirane, J. A. Gonzalo, L. E. Cross, and S.-E. Park, *Appl. Phys. Lett.* **74**, 2059 (1999).
- ¹⁴B. Noheda, J. A. Gonzalo, L. E. Cross, R. Guo, S.-E. Park, D. E. Cox, and G. Shirane, *Phys. Rev. B* **61**, 8687 (2000).
- ¹⁵D. E. Cox, B. Noheda, G. Shirane, Y. Uesu, K. Fujishiro, and Y. Yamada, *Appl. Phys. Lett.* **79**, 400 (2001).
- ¹⁶B. Noheda, D. E. Cox, G. Shirane, S.-E. Park, L. E. Cross, and Z. Zhong, *Phys. Rev. Lett.* **86**, 3891 (2001).
- ¹⁷L. Bellaiche, A. García, and D. Vanderbilt, *Phys. Rev. B* **64**, 060103 (2001).
- ¹⁸L. Bellaiche, A. García, and D. Vanderbilt, *Phys. Rev. Lett.* **84**, 5427 (2000).
- ¹⁹O. Noblanc, P. Gaucher, and G. Calvarin, *J. Appl. Phys.* **79**, 4291 (1996).
- ²⁰M. Dong and Z.-G. Ye, *J. Cryst. Growth* **209**, 81 (2000).
- ²¹K. Aizu, *Phys. Rev. B* **2**, 754 (1970).
- ²²G. Xu, H. Luo, H. Xu, and Z. Yin, *Phys. Rev. B* **64**, 020102 (2001).
- ²³Y. Lu, D.-Y. Jeong, Z.-Y. Cheng, and Q. M. Zhang, *Appl. Phys. Lett.* **78**, 3109 (2001).