

University of Groningen

## Lipid droplet autophagy in the yeast *Saccharomyces cerevisiae*

van Zutphen, Tim; Todde, Virginia; de Boer, Rinse; Kreim, Martin; Hofbauer, Harald F.; Wolinski, Heimo; Veenhuis, Marten; van der Klei, Ida; Kohlwein, Sepp D.

*Published in:*  
Molecular Biology of the Cell

*DOI:*  
[10.1091/mbc.E13-08-0448](https://doi.org/10.1091/mbc.E13-08-0448)

**IMPORTANT NOTE:** You are advised to consult the publisher's version (publisher's PDF) if you wish to cite from it. Please check the document version below.

*Document Version*  
Publisher's PDF, also known as Version of record

*Publication date:*  
2014

[Link to publication in University of Groningen/UMCG research database](#)

*Citation for published version (APA):*

Zutphen, T. V., Todde, V., Boer, R. D., Kreim, M., Hofbauer, H. F., Wolinski, H., ... Kohlwein, S. D. (2014). Lipid droplet autophagy in the yeast *Saccharomyces cerevisiae*. *Molecular Biology of the Cell*, 25(2), 290-301. DOI: 10.1091/mbc.E13-08-0448

**Copyright**

Other than for strictly personal use, it is not permitted to download or to forward/distribute the text or part of it without the consent of the author(s) and/or copyright holder(s), unless the work is under an open content license (like Creative Commons).

**Take-down policy**

If you believe that this document breaches copyright please contact us providing details, and we will remove access to the work immediately and investigate your claim.

*Downloaded from the University of Groningen/UMCG research database (Pure): <http://www.rug.nl/research/portal>. For technical reasons the number of authors shown on this cover page is limited to 10 maximum.*

# Supplemental Materials

*Molecular Biology of the Cell*

Zutphen et al.

## Supplementary figures

**Figure S1. LD formation does not depend on Atg8/LC-3 in yeast.** *atg15*, *atg1* and *atg8* mutant cells were grown in YPD complete media over night (16 h). Lipid droplets were labeled with BODIPY® 493/503 and analyzed by confocal laser scanning microscopy; fluorescence (top) and transmission images (bottom). Scale bar = 5  $\mu$ m.

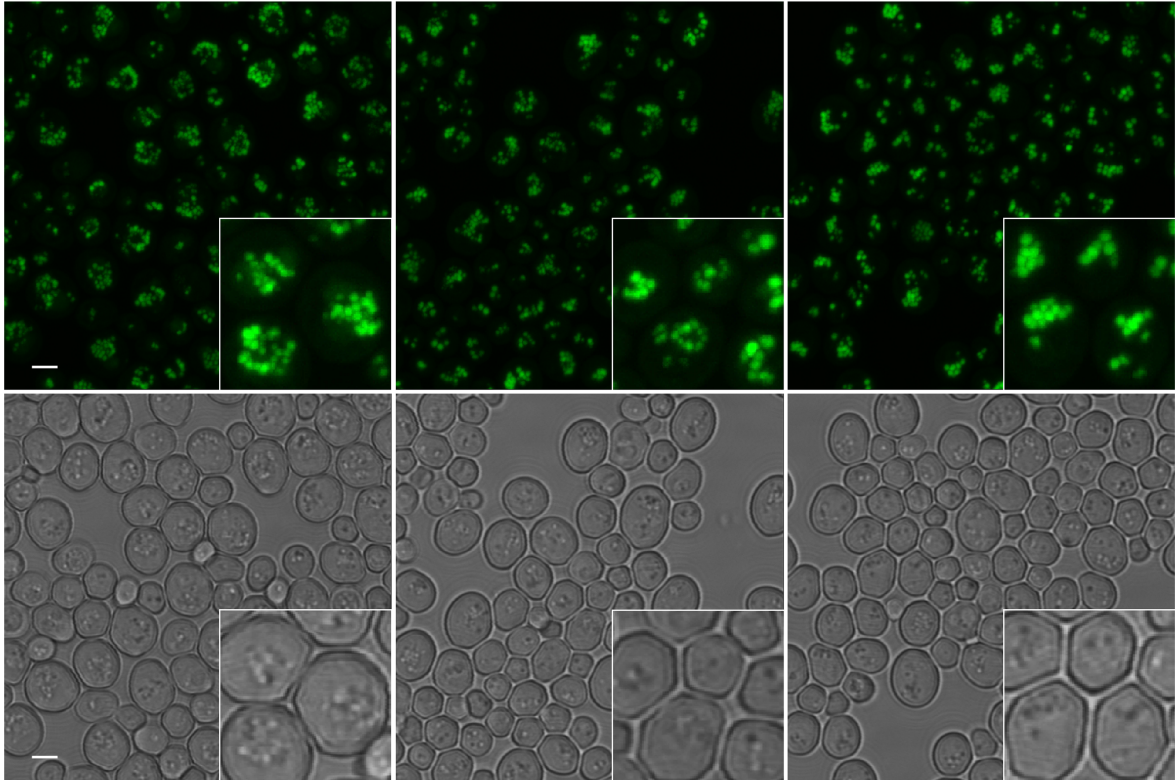
**Figure S2. Internalization of an alternative LD marker, Erg6-GFP requires an identical set of Atg proteins.** Western blots were prepared from crude extracts of the indicated mutant cells that express chromosomally encoded Erg6-GFP that were grown to the late logarithmic growth phase in rich medium and shifted to synthetic minimal medium lacking nitrogen, for 8h. Blots were decorated with anti-GFP and anti-GAPDH antibodies.

Supplementary Figure S1

*atg15*

*atg1*

*atg8*



Supplementary Figure S2

